

BA (HONS) FASHION DESIGN AND TECHNOLOGY



2021 Graduate Show



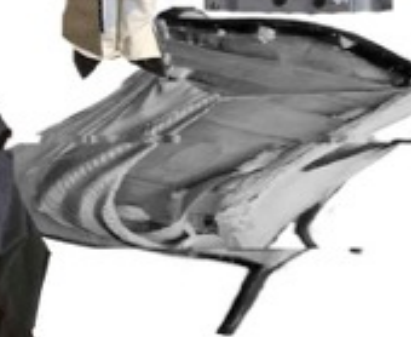
Manchester
Metropolitan
University

MANCHESTER
FASHION
INSTITUTE





sleeve creative
pattern cutting



Coat Development (creative pattern cutting +
experimental drape)



CONCEPT BOARD



MUMS
WEDDING



ITION IS IN
Elegant Mar
Also to the
Evening Dr
n-Gowne
Velvete, Pl
blue, both plain, and
will be sold at
material, consi
ful also, w
rich Milline
ed, also, w
umbrellas, N
of Trimmings, Furs, P
et Cloaks, Fur Visites, all will be
extremely low prices.

PETE
ON
MOURNING WAREHOUSE,
REGENT-STREET, LONDON.





BASQUE
DEVELOPMENT

Dear Rick,
I am two days late on
the letter but I guess you have
some slight idea as to the reason.
I have been endeavoring to have
the mail read out. My head is rather
foggy. Anyway I'm not
an expert shuffler and got it to be
done that there will be some
improvement by Sunday. I've
had a puncture already, killed the
spare tires without success and
got the batteries all over and
running on them. It is up
and running now. I had
tried to run on them as they
are not there so nothing.

FLORAL RECYCLED UPHOLSTERY
FABRIC - OLD CURTAINS

BLACK VEVLET BOWS INSPIRED BY
VICTORIAN MOURNING

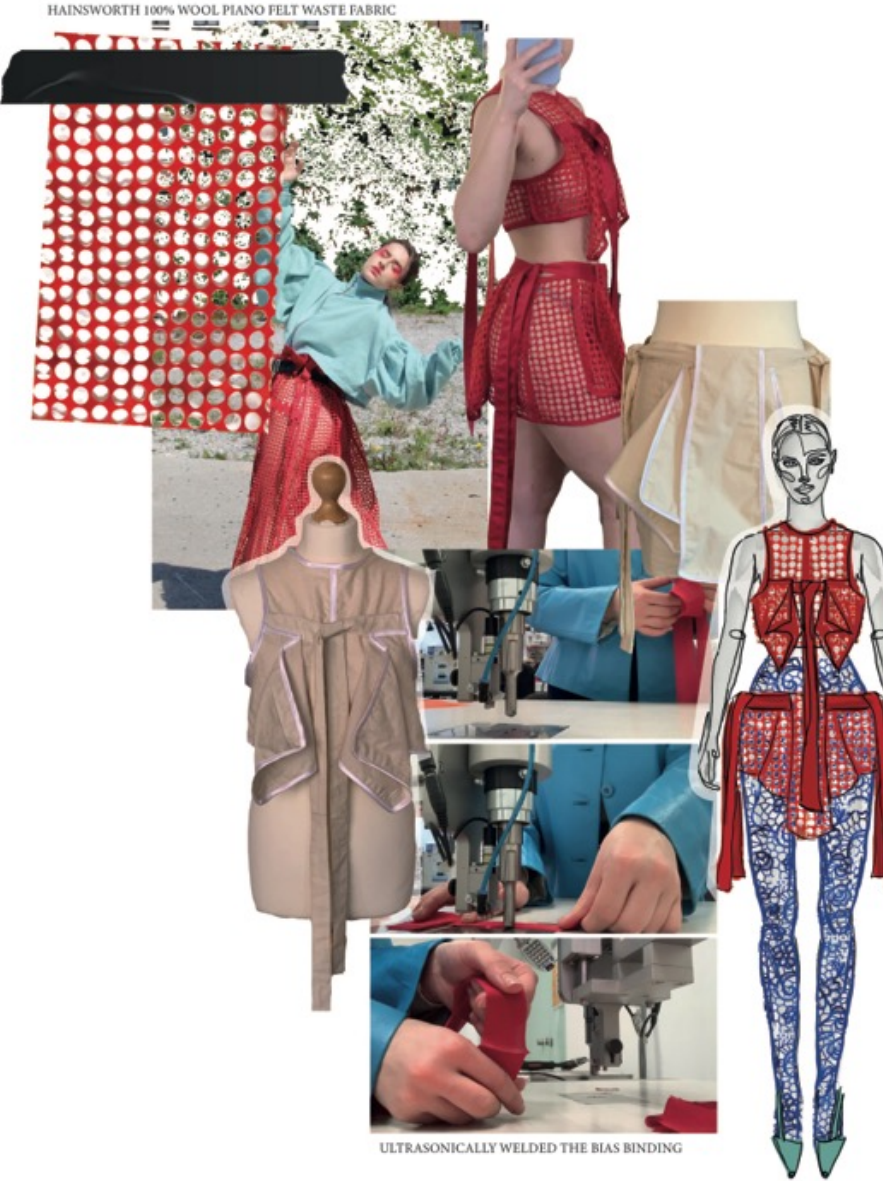








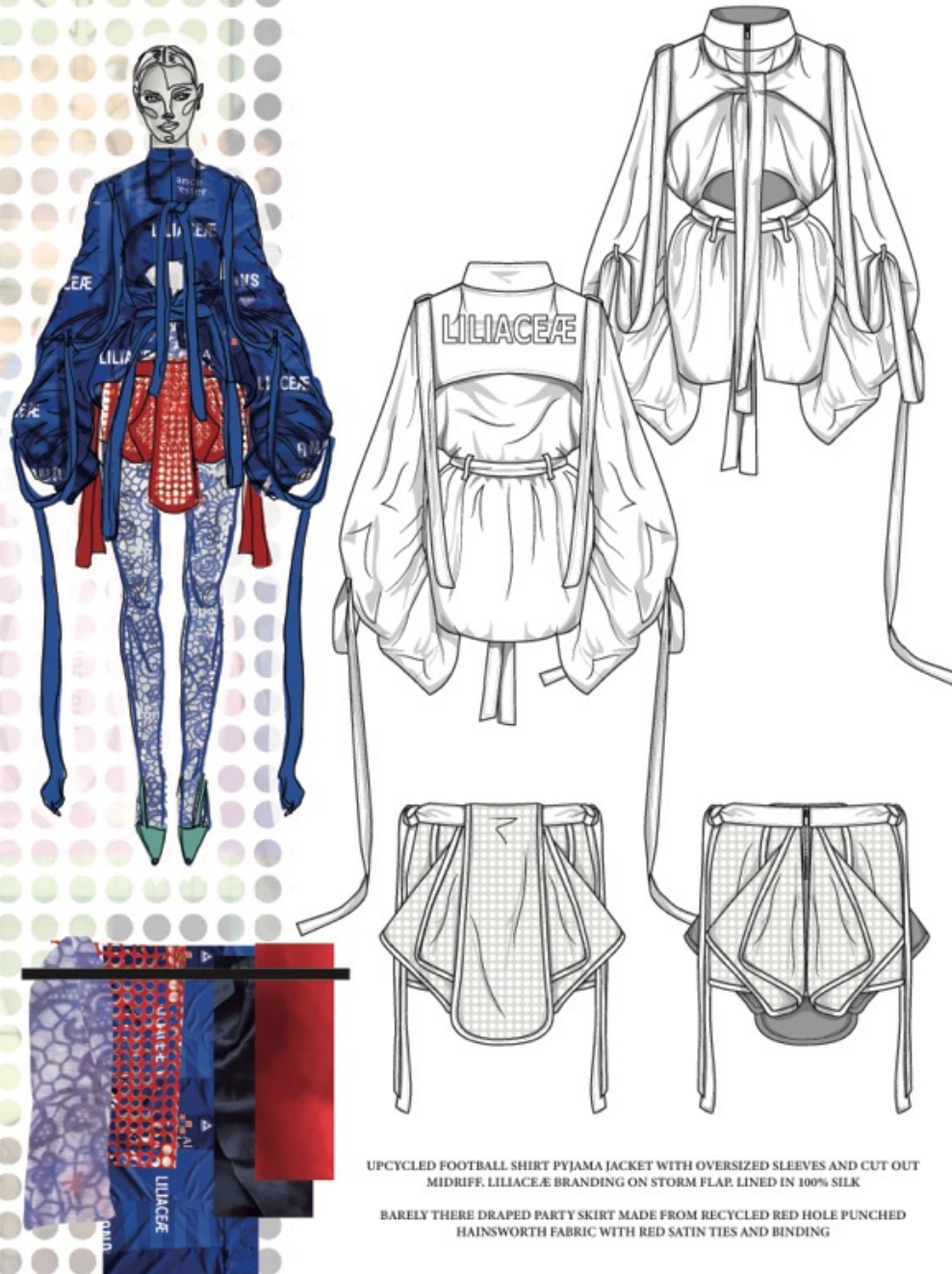
DESK COWBOYS



RECYCLED WASTE FABRIC







OUTFIT SEVEN



DJS AND MCS WOULD WEAR FOOTBALL SHIRTS TO THE RAVE

UPCYCLING FOOTBALL SHIRTS



Look 1 TAILORED
SUIT



Look 2 - oversized
ZIPPER SHIRT



Look 3 DECONSTRUCTED
JACKET



Look 4: TRENCH
JACKET, TROUSERS AND
LARGE MASK TOP



Look 5: WHITE LEO TROUSERS
LARGE VEST



Look 6 WHITE WOOL
COAT



Look 7 HOURGLASS
TAILORED COAT



TRENCH COAT AND
PATTERNING TROUSERS
(Look 8)



Look 1 tailored
SUIT



Look 2 oversized
ZIPPER SHIRT



Look 3
DECONSTRUCTED
JACKET



Look 4
TRENCH JACKET, TROUSERS
AND LARGE MASK TOP



Look 5: WHITE LEO TROUSERS
LARGE VEST



Look 6 WHITE WOOL
COAT



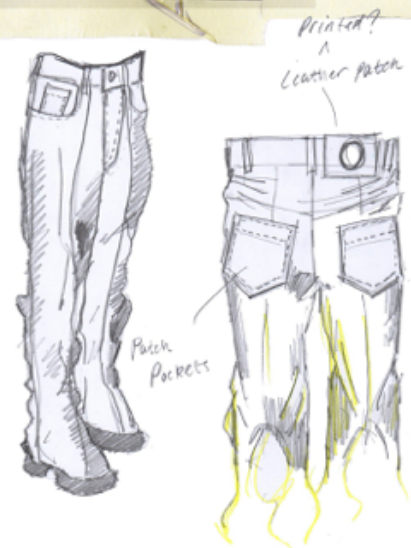
Look 7: HOURGLASS
TAILORED COAT



TRENCH COAT +
PATTERNING TROUSERS
(Look 8)

Horse trouser Development

Final fitting



JONATHAN JAMES WILLIAM
1995 - 2020
FOREVER

Sample of zip-fly front and placement of back patch pockets, leather patch, belt loops and yoke.

Left: www.subshop.com. © sub-shop.com Center: © Jonathan James William is a registered trademark of Jonathan James William. Right: "Horse", photographed by Nick Ludgate, Ludgate Photography. © www.ludgate.com

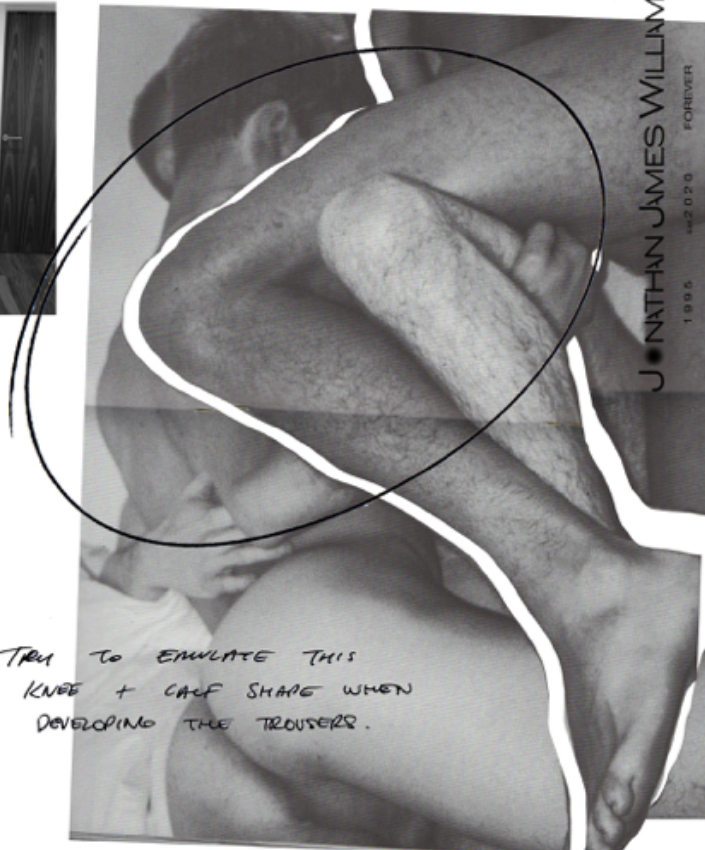
First fitting for horse leg trouser, resampled in denim and creatively cut to identify the shaping and "horse calf articulation" need to sample a traditional, tailored waistband, zip-flyfront, pockets etc. need to show an understanding of a menswear garment about to start transforming.



FOCUS ON COMBINING HUMAN BODY WITH HORSE'S LEGS.



First toile horse leg trouser for look 3, more definition and articulation needs to be applied to the knee and calf areas of the trousers as shown above.



TRY TO EMULATE THIS KNEE + CALF SHAPE WHEN DEVELOPING THE TROUSERS.

JONATHAN JAMES WILLIAM
1995 2020 FOREVER



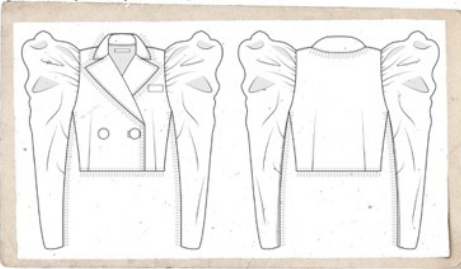
Outfit four



Final Outfit Board



Blazer with skirt detached



Lace corset top



Hidden pockets in seam front and back



Beaded trim down side seams

Beaded trim around collar and sleeve seam



Smocked ruffle hem

Let of mutton sleeve



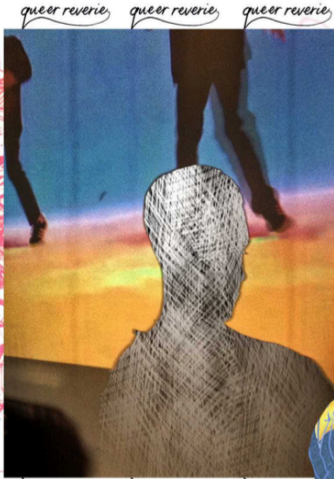
Smocked ruffled skirt







QUEER REVERIE / LIBERATION
 REVERIE, DREAMING, WHAT IF?
 FREEDOM
 EUPHORIA
 NOSTALGIA
 "SEHNACHT"
 ROMANTICISING
 ESCAPISM
 FANTASY
 'DIVINE MASCULINE'
 CAREFREE
 RAW EMOTIONS, UNDISGUISED
LIBERATION



queer reverie

QUEER REVERIE IS MY OWN
 PERSONAL JOURNEY OF
 PERCEIVING IDENTITY AND REALLY
 TRYING SEE PAST ENGRAINED
 LABELS AND STEREOTYPES I'VE
 BEEN SHOWN BY SOCIETY.

I SEE DRESSING UP OR CLOTHING
 AS A MODE TO TELL YOUR
 NARRATIVE, ESPECIALLY HOW YOU'RE
 FEELING, SO I REALLY WANTED TO
 INCORPORATE THIS IN MY DESIGN
 LANGUAGE WITH EVERYTHING I DO,
 TAKING AN HONEST YET NUANCED
 APPROACH, FEELING EVERYTHING
 AND BEING UNAPOLOGETIC ABOUT IT

MY MAIN FOCUS ISN'T A CONSUMER,
 IT'S A FEELING, GIVING CHOICE
 BACK TO THE WEARER AND TRYING
 TO STEER FOCUS AWAY FROM LABELS
 AND CATEGORISING EVERYONE.

EACH CHARACTER IS A DREAM,
 EITHER REMINISCING OF
 TIMES GONE BY OR OF THE
 MASCULINE IDENTITY!

THE SCRIBBLE 'TAKE ON ME' AND 'WAITING FOR A
 STAR TO FALL' PRINTS DEPICTED, WERE INSPIRED
 BY THEIR NAMESAKE EIGHTIES SONGS.

'SEHNSUCHT'

What does Sehnsucht mean?

A noun with a meaning which is a combination of 'longing', 'pining' or 'yearning', the idea of Sehnsucht is something which can't be summed up in one word in English. 11 Nov 2019



A character inspired by nostalgia with a nod to the 80s and reminiscing of a time that we never experienced. The star print 'waiting for a star to fall' was inspired by its namesake song and the camp, romantic ethos of the 80s which correlates with the idea of dreaminess in Queer Rework collection.



BUTTONSTAND

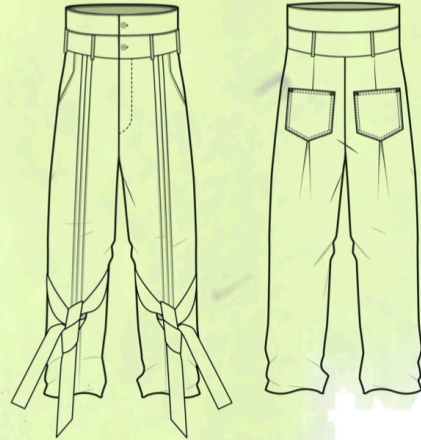
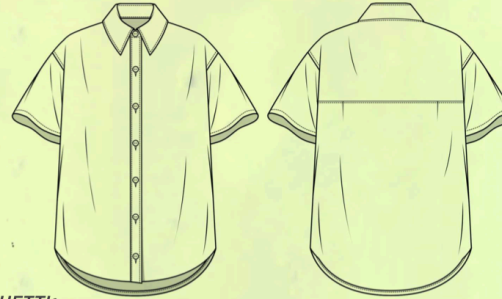
CURVEDHEM SHIRT

SHORT SLEEVED

BACK YOKE

DROPPED CROTCH

SPAGHETTI STRAP TIES



8CM PINTUCKS

DART INTO BOX PLEAT WITH DENIM STYLE PATCH POCKET WITH WIN NEEDLE STITCHING

LOOK #2 - 'SEHNSUCHT'



TROUSERS HAVE SCRIBBLE INSPIRED BY A-HA'S 'TAKE ON ME' VIDEO.
TROUSER IS NO ON WB TO MIMIC 2 BELT STYLING OF 80S





queer reverie queer reverie queer reverie queer reverie queer reverie queer reverie qu

INSTINCTIVE REVOLUTION
INSTINCTIVE REVOLUTION

FAMILY HERITAGE

MY GRANDAD 23 YEARS
AS A BARNSELY MINER

BARNSELY WOMEN
OPPOSE PIT CLOSURES
AND A NATIONAL BALLOT
UNITE AND FIGHT!

PUT IT TO THE PEOPLE

A YORKSHIRE MINERS STORY
10 YEARS UNDERGROUND

WHAT WERE THE CONDITIONS LIKE WORKING DOWN
THE PIT?

"I SPENT MOST OF MY TIME ON THE TAIL END OF THE COAL FACE. THE MAIN GATE WOULD LET FRESH AIR IN AND FUMES, THE DUST THROUGH TO THE COAL FACE WHICH WOULD THEN END UP IN THE TAIL GATE. IT WAS CERTAINLY THE DIRTIEST PLACE TO BE.

WE USED TO GET LOADS OF VISITORS WHO WOULD COME DOWN TO THE COAL FACE. THEY'D ASK US WHERE WE WASH OUR HANDS, GO TO THE TOILET OR EAT. IT MADE ME LAUGH EVERYTIME. YOU WENT DOWN WITH WHAT YOU'VE GOT AN THAT WAS THAT. THERE WAS NO CANTEN OR LUXURY ITEMS.

THE CONDITIONS WERE UNBELIEVABLY, THE HEAT AND THE DUST. YOU CAN'T BEGIN TO IMAGINE."

WHAT ARE YOUR MOST MEMORABLE STORIES FROM WORKING DOWN THE PIT?

"I'D ONLY SPENT A WEEK DOWN THE PIT AND HAD TO CARRY SOMEONE OUT, CARRYING SOMEONE ON A STRETCHER WASN'T EASY ESPECIALLY FROM DOWN THERE AT 16 YEARS OLD.

I ONCE WENT DOWN NELLINGLEY COLLIERY AND HONESTLY IT WAS THE BIGGEST MINE I'D EVER BEEN DOWN. IT WAS ABSOLUTELY UNBELIEVABLE. THE COAL WAS AS HIGH AS MY CEILING. THE COAL FACE AT BARNSELY MAIN WHERE I WORKED WAS ABOUT 4FT HIGH. YOU COULDN'T EVER WALK THROUGH IT! IT WAS ALWAYS ON MY HANDS AND KNEES.

MOST OF THE COAL FACES I WORKED ON YOU HAD TO CRAWL UP AND DOWN BUT DEPENDING ON CONDITIONS IT WOULD CONTINUOUSLY CAVE IN AND YOU WOULD HAVE TO CRAWL UP AND DOWN ON YOUR BELLY INSTEAD. ESPECIALLY WHERE I WAS ON TALE END.

WHEN I WENT TO GRIMETHORPE I WAS SENT TO WORK ON THE COAL FACE IN NEW HILL BUT BECAUSE IT HAD BEEN WORKED ON ABOVE AND BELOW IT USED TO JUST COLLAPSE ALL THE TIME. IT CAVED IN MANY A TIME WHEN I WAS THERE.

AT GRIMETHORPE THERE WERE 40 MEN A LANDING (LIKE AN ELEVATOR) THAT TOOK US UNDERGROUND AND IT TRAVELLED AT 40 FEET PER SECOND. WHEN IT SET OFF YOUR HEART WAS IN YOUR STOMACH."

HOW DID YOU FEEL WHEN THE PITS CLOSED?

"WHEN EVERYTHING CLOSED I WAS AT THOUGHTON MAIN. I PUT NEWS ON AND THEY WERE LISTING ALL THE PIT CLOSURES AND IT WAS LIKE WATCHING THE FOOTBALL SCORES. IT WAS JUST PIT AFTER PIT AFTER PIT. I WENT TO WORK THAT NIGHT AND ALL OF US ON THE COAL FACE TEAM INCLUDING THE DEPUTY JUST SAT THERE. IT WAS A VERY SAD TIME. NONE OF US WANTED TO LEAVE, WE WERE A TEAM AND THERE FOR EACH OTHER AND UNFORTUNATELY NOBODY KNEW WHAT TO SAY OR DO."

WHAT WERE YOUR THOUGHTS ON THE MINERS STRIKE?

"THE MINERS STRIKE FOR ME WAS A POLITICAL BATTLE BETWEEN THE CONSERVATIVES AND THE BIGGEST UNION AT THE TIME AND TO BE HONEST IF THE NUM WOULD'VE HANDLED IT LIKE THEY SHOULD HAVE AND GOT ALL THE MINERS OUT THEN IT WOULD HAVE BEEN A DIFFERENT RESULT TO HOW IT ENDED. IT WAS A POLITICAL BATTLE BETWEEN MAGGIE THATCHER AND ARTHUR SCARGILL."

LOOKING BACK, WHAT WOULD YOU MAKE OF YOUR EXPERIENCE OF WORKING AS A MINER?

"IT WAS SOME OF THE BEST TIMES OF MY LIFE. IT WAS A MAN'S WORLD. IT WAS GREAT CAMARADERIE AND I MADE SOME OF MY BEST MATE'S DOWN THERE. IT WAS A CRAZY TIME.

I THINK OF SOME OF THE THINGS THAT I DID WHILST WORKING DOWN THERE AND LOOKING BACK CAN'T ACTUALLY BELIEVE THAT I DID IT! YOU NATURALLY JUST DID IT. BECAUSE OF THE ENVIRONMENT AND THE TIMES YOU JUST DID IT. IT SCARES THE LIFE OUT OF ME THINKING ABOUT HAVING TO DO IT NOW.

I LOVED MY TIME DOWN PIT. I DON'T WANT TO LEAVE BUT WE HAD TO AND IT'S A PART OF MY LIFE THAT I WILL NEVER FORGET. IM SURE MANY OTHER MINERS WILL SAY THE SAME"

AN INTERVIEW WITH MY DAD
06/01/2021

TO UNITE
IS TO
HAVE
POWER

TO UNITE
IS TO
HAVE
POWER

Miners send greetings and support to Pride

WOMEN Against Pit Closures, whose members have been travelling the country in support of miners determined to keep their pits open, have sent a message of support and solidarity to lesbian and gay Pride marches tomorrow.

NS & GAY'S
THE MINERS

mined a 1992
Board's signature

FREEDOM
FOR ALL
WOMEN

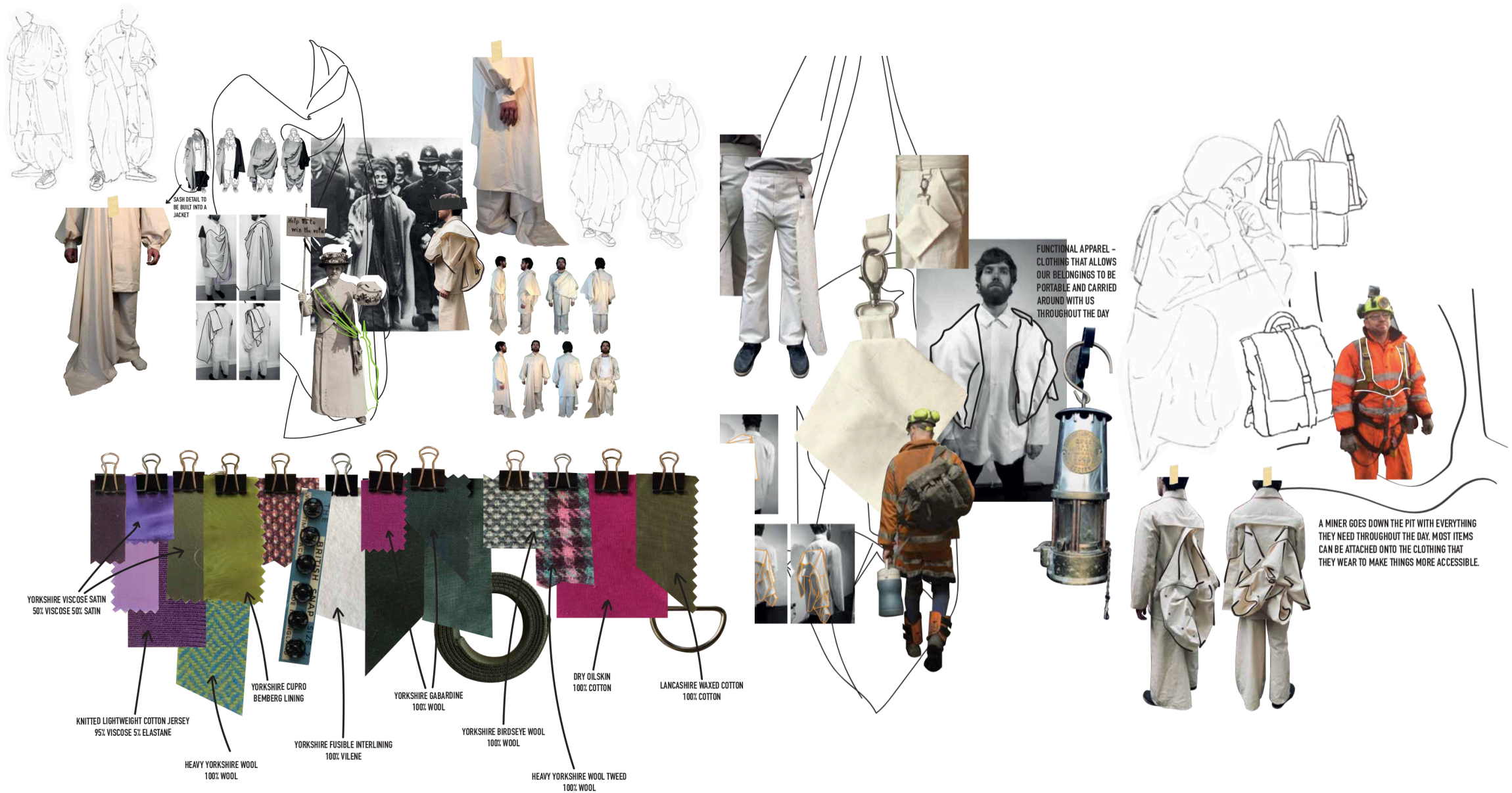
sure that a law was
allowed to follow its
programme. we
is by am
other in
not all its

#Decrim

WOMEN
STAND UP
AND BE
COUNTED
WOMEN'S LIBERATION

WOMEN AGAINST PIT CLOSURES
1984 1985

WOMEN AGAINST PIT CLOSURES / NUM
NATIONAL WOMEN'S DEMONSTRATION
AND GALA
SATURDAY 11 AUGUST IN LONDON





TIRE INNER TUBE



frankenfurter

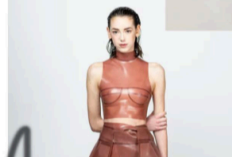


lupae



QUEER

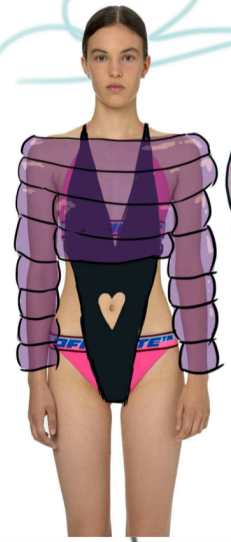
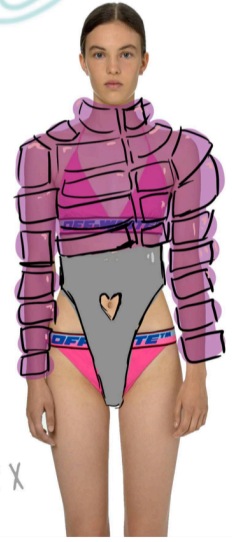
florian mathe



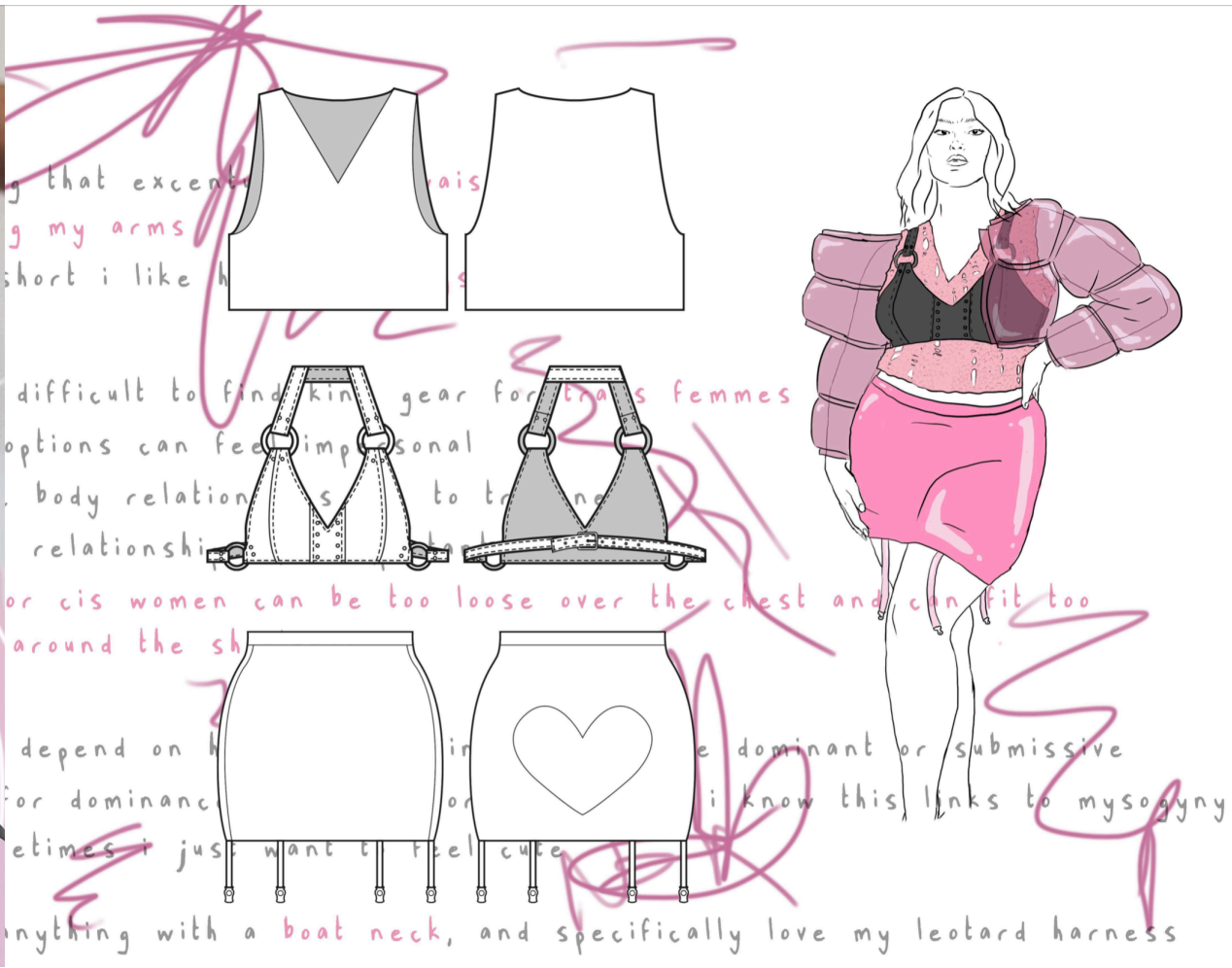
ROPE TO RUBBER



ENCASING AIR IN LATEX







g that excen
g my arms
short i like h

difficult to find kind gear for trans femmes
options can feel impersonal
body relations to trans
relationships

or cis women can be too loose over the chest and can fit too
around the sh

depend on how you're feeling dominant or submissive
for dominance or submission i know this links to misogyny
sometimes i just want to feel cute

anything with a boat neck, and specifically love my leotard harness



ALWAYS ON THE MOVE.

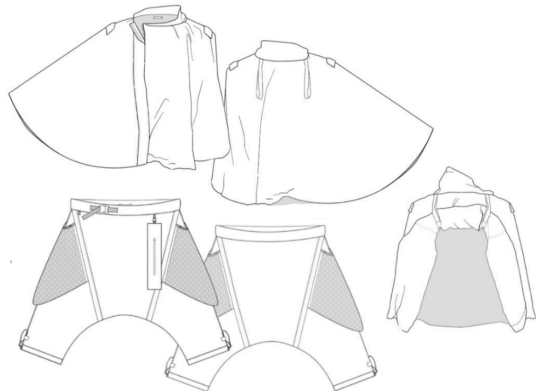


PRACTICAL / FUNCTIONAL

ts of the world, this isn't off-road





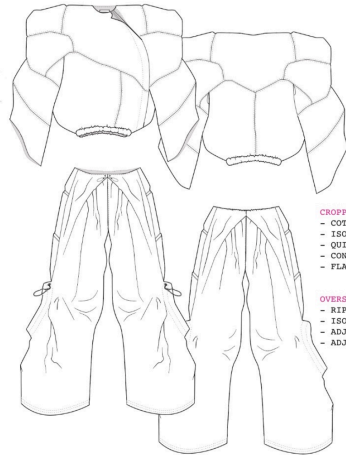


ZIP UP POUCH

- GREY RIPSTOP MAIN FABRIC
- CONTRAST ORANGE TAFFETA LINING
- INSULATED WITH LIGHT WEIGHT BATTING
- OFF CENTER TWO WAY ZIP FASTENING
- INSIDE POCKET
- ORANGE VELVET WITH MAIN VELVET TABS
- FUSIBLE ELASTIC PULL COLLAR WITH ORANGE ORG. LOGO

OVERSIZED SHAMU PANTS

- GREY RIPSTOP MAIN FABRIC
- INSULATED WITH LIGHT WEIGHT BATTING
- CONTRAST MESH FEATURES ON REMOVABLE FRONT POCKET
- ADJUSTABLE WAIST AND CUFFS
- CONTRAST TRIM
- REMOVABLE FRONT CLIP OFF POCKET



CROPPED QUILTED BUBBLE JACKET

- COTTON TWIL MAIN FABRIC
- INSULATED WITH WADDING
- QUILTED
- CONTRAST GREY TOP STITCHING
- FLARED SLEEVES

OVERSIZED DRAPE TROUSER

- RIPSTOP GREY FABRIC
- INSULATED WITH LIGHT WEIGHT BATTING
- ADJUSTABLE PULL TABS
- ADJUSTABLE WAIST



ICAPSULE! WARDBOARD A CONDENSED COLLECTION OF TIMELESS AND FUNDAMENTAL GARMENTS THAT ARE CONSIDERED ESSENTIAL FOR EVERYDAY LIFE.



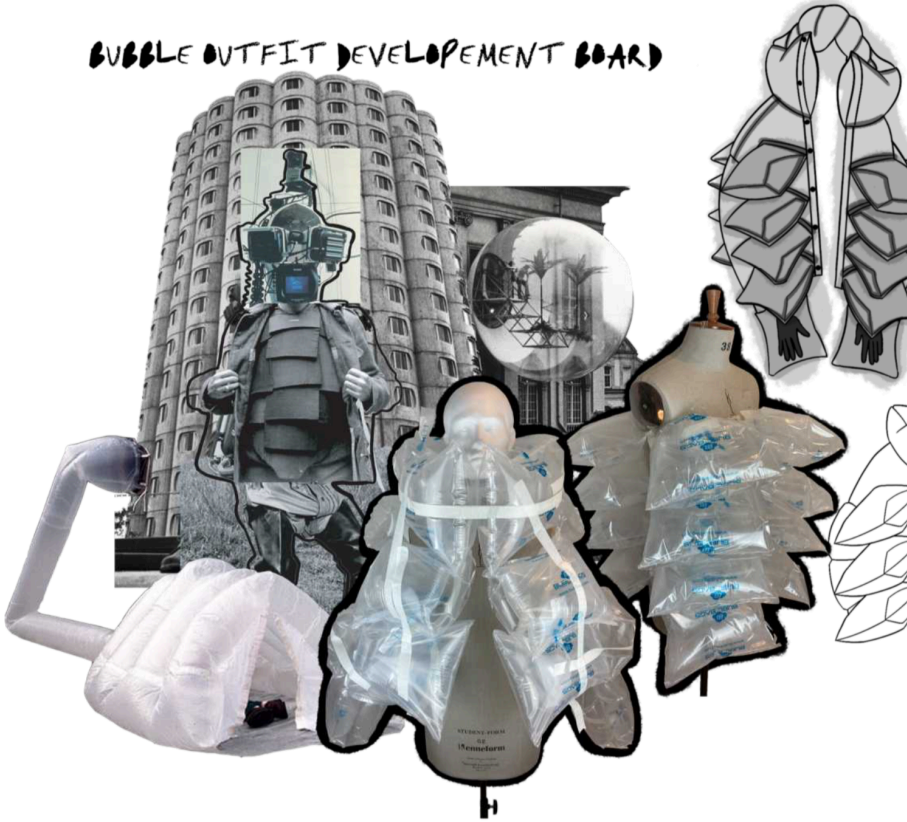
REFUGE FOR THE PARANOID.

ICAPSULE! A SMALL CASE OR CONTAINER, ESPECIALLY A ROUND OR CYLINDRICAL ONE OR A TIGHT SHEATH OR MEMBRANE.

DAZZLE OUTFIT DEVELOPEMENT



BUBBLE OUTFIT DEVELOPEMENT BOARD



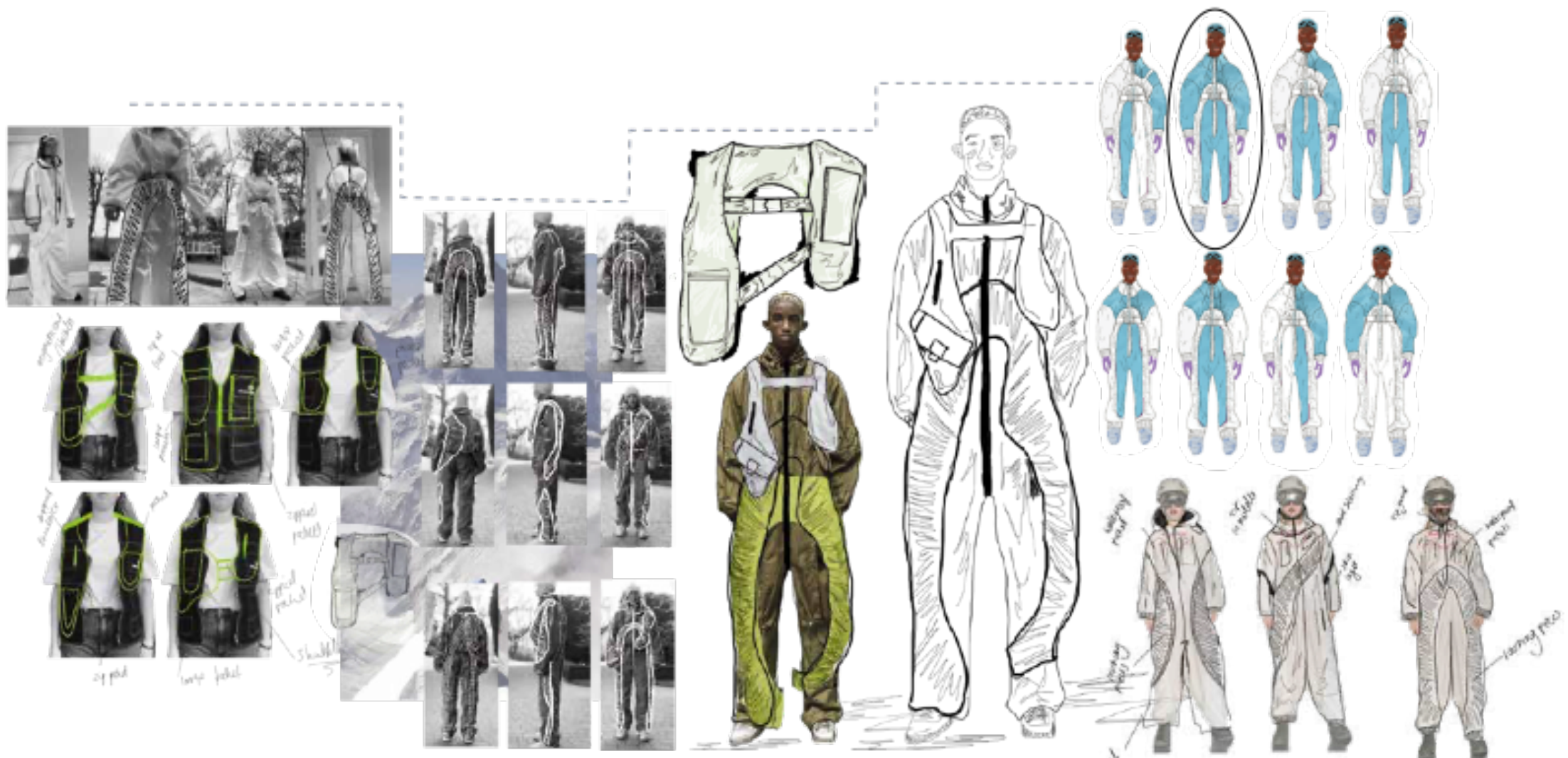
SNIPER TRENCH GOWN DEVELOPEMENT



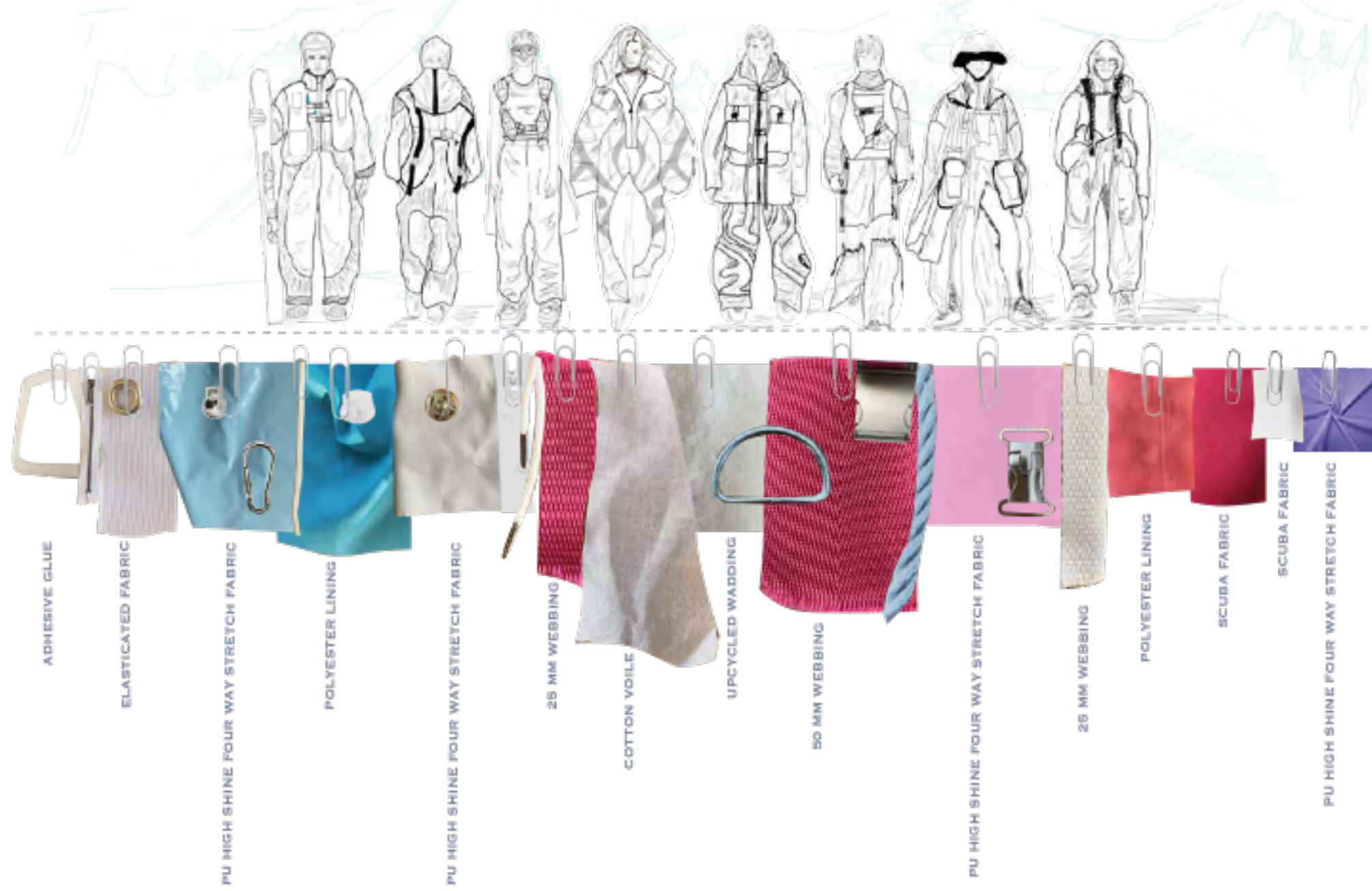
THE DESCENT

The act, process or fact of moving from a higher to a lower position.
A downward inclination or slope.

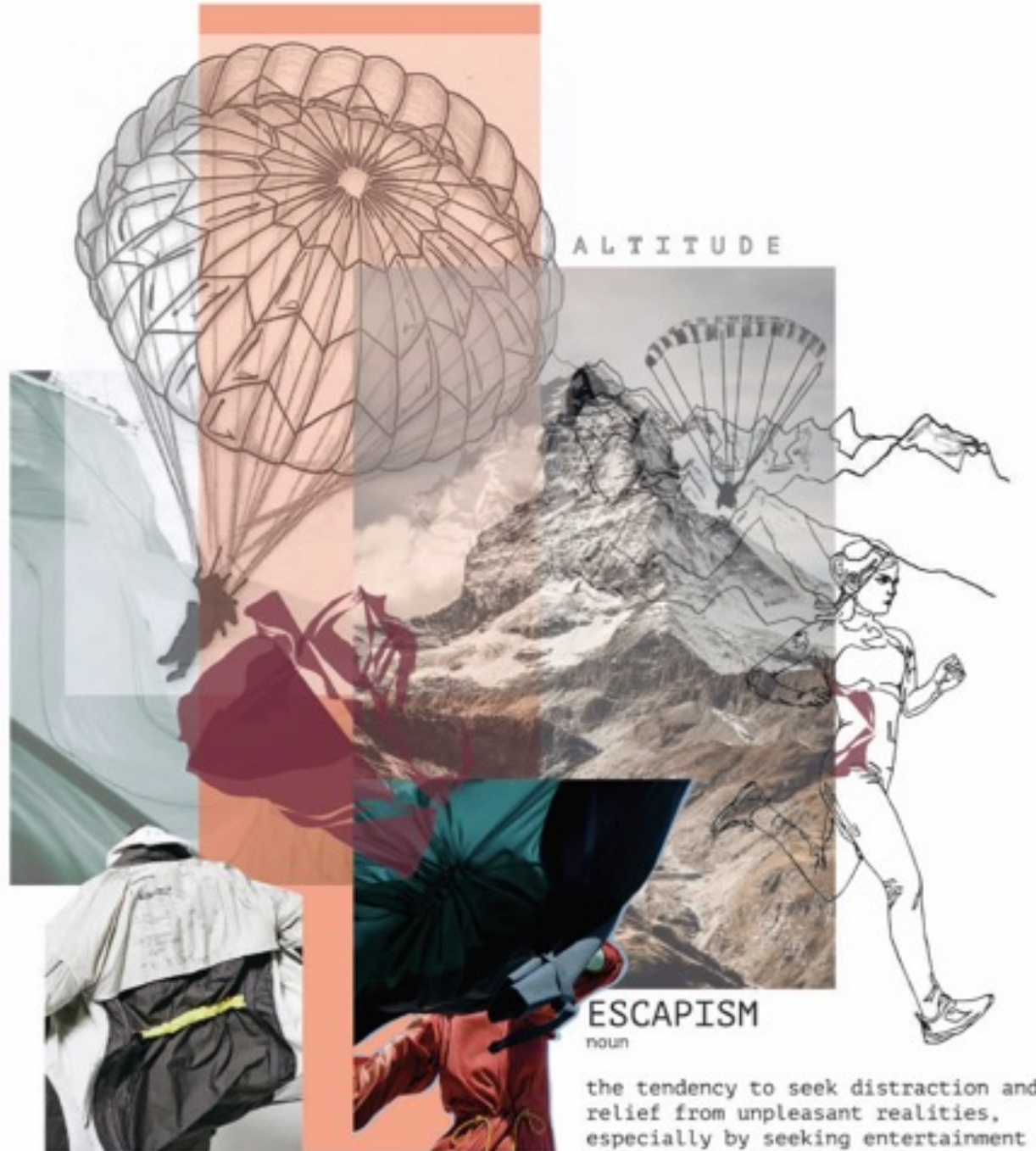




outfit 2 full development

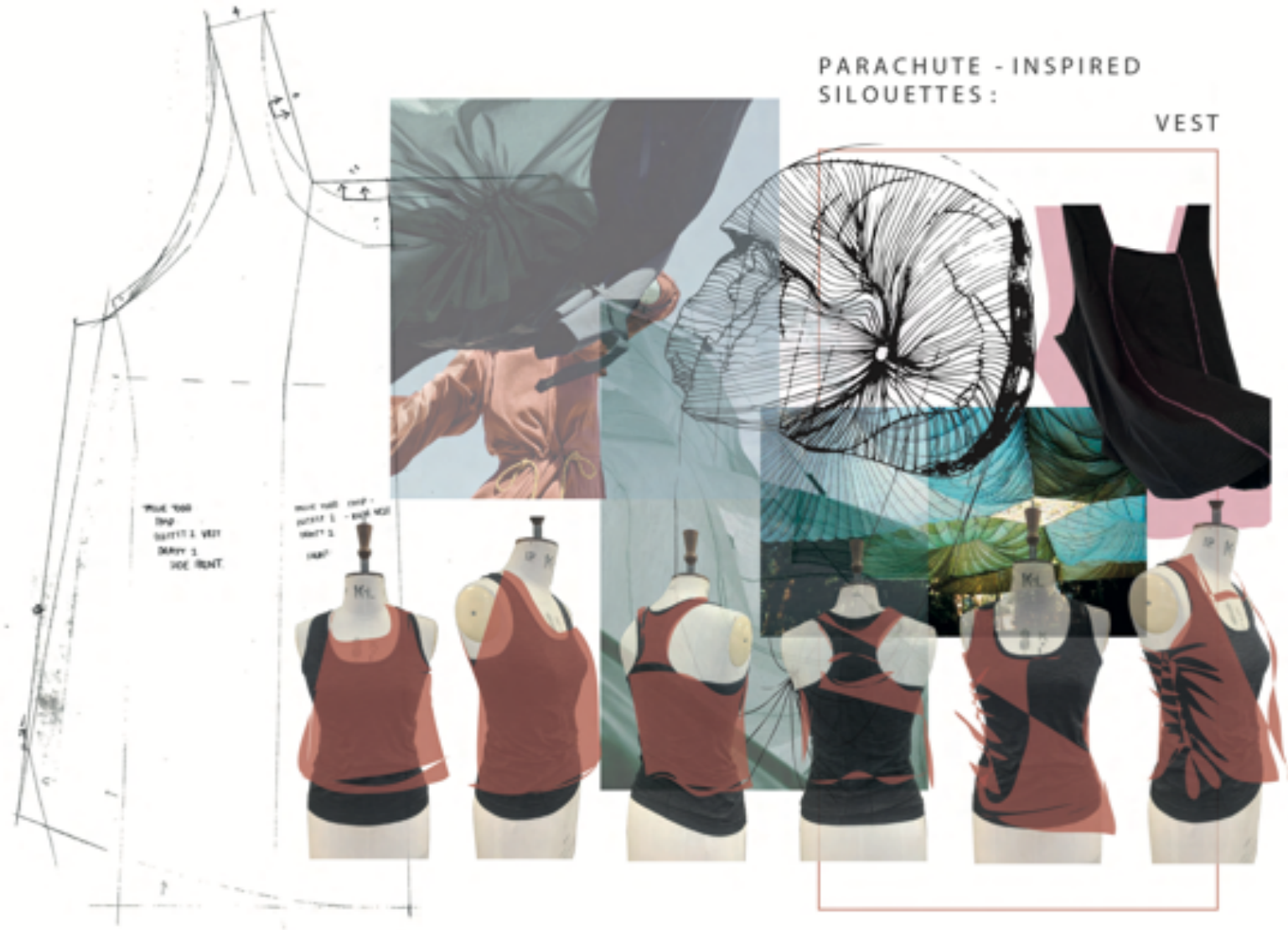


WOMEN'S "ALL WEATHER" RUNNINGWEAR





DEVELOPMENT





OUTFIT 1:

S / S 2022 (WET)

TECHNICAL RUN OUTFIT





CASUAL CLOTHING WORN BY ANITA-GORE IN
STUDIO 54 TO COMFORTABLY DANCE THE
NIGHT AWAY



★OVERSIZED CASUAL FITS★

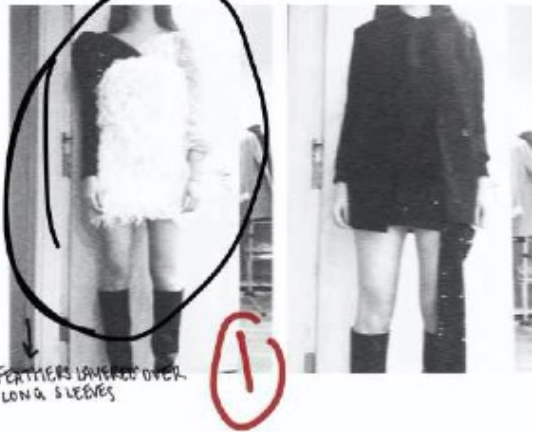
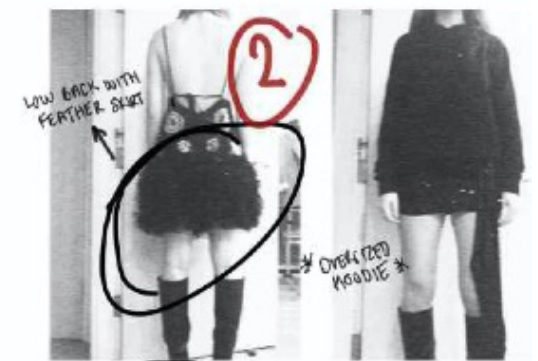
↑OVERSIZED
SHOULDERS



FEATHER TRIM - DETACHABLE??



FEATHER DRESS LAYERED
OVER MOODIE







CONCEPT

MOMENTS IN A LIFETIME
JENNIFER SHAW



USING ALL THE GARMENTS I HAD GATHERED - EACH SYMBOLISING A DIFFERENT MOMENT / MEMORY, I COLLAGED THE GARMENTS TOGETHER MIMICKING A WARDROBE APPROACH. CLASHING ALL THE MOMENTS TOGETHER TO CREATE INSPIRATION FOR SHAPE AND STYLING OPTIONS.

WHEN DESIGNING FROM THE COLLAGES I INTRODUCED THE USE OF 80'S PARSIAN SHAPES AND DETAILS.

WARDROBE DEVELOPMENT

MOMENTS IN A LIFETIME
JENNIFER SHAW



LINE UP

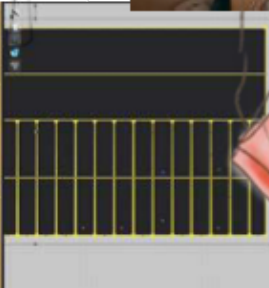


MOMENTS IN A LIFETIME
JENNIFER SHAW





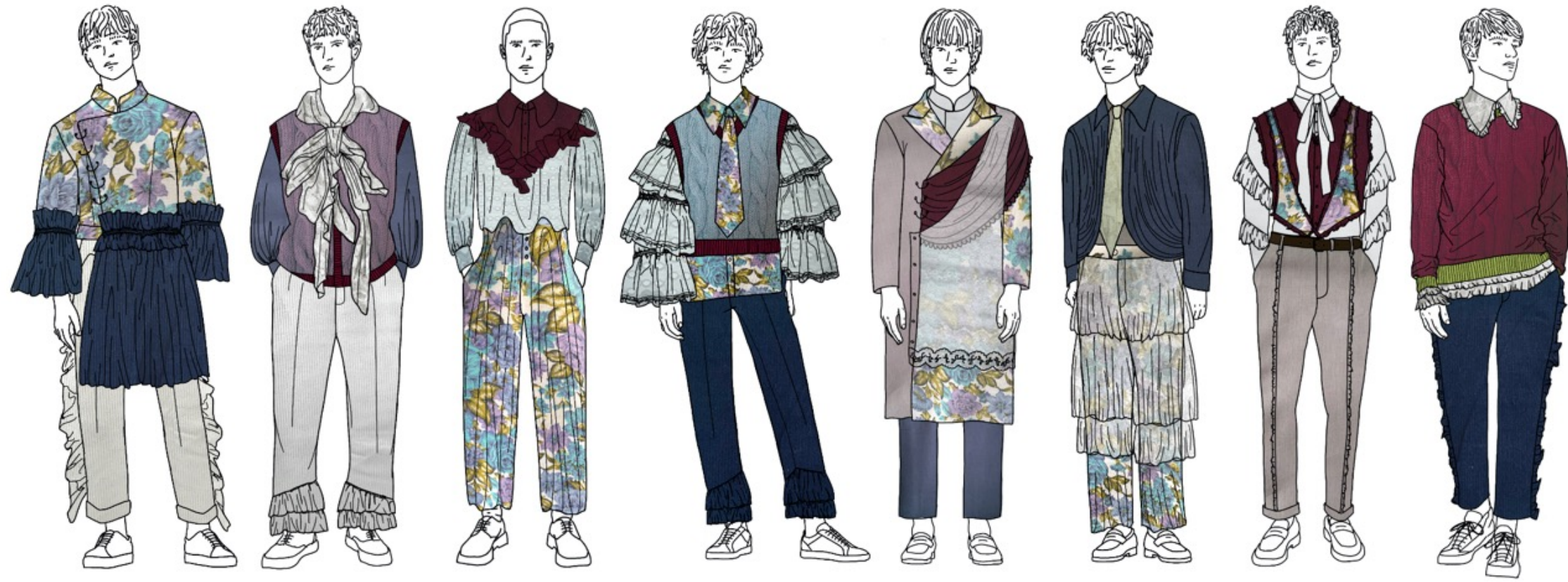
DESIGN DEVELOPMENT - OUTFIT ONE











BA (HONS) FASHION DESIGN AND TECHNOLOGY



2021 Graduate Show



Manchester
Metropolitan
University

MANCHESTER
FASHION
INSTITUTE