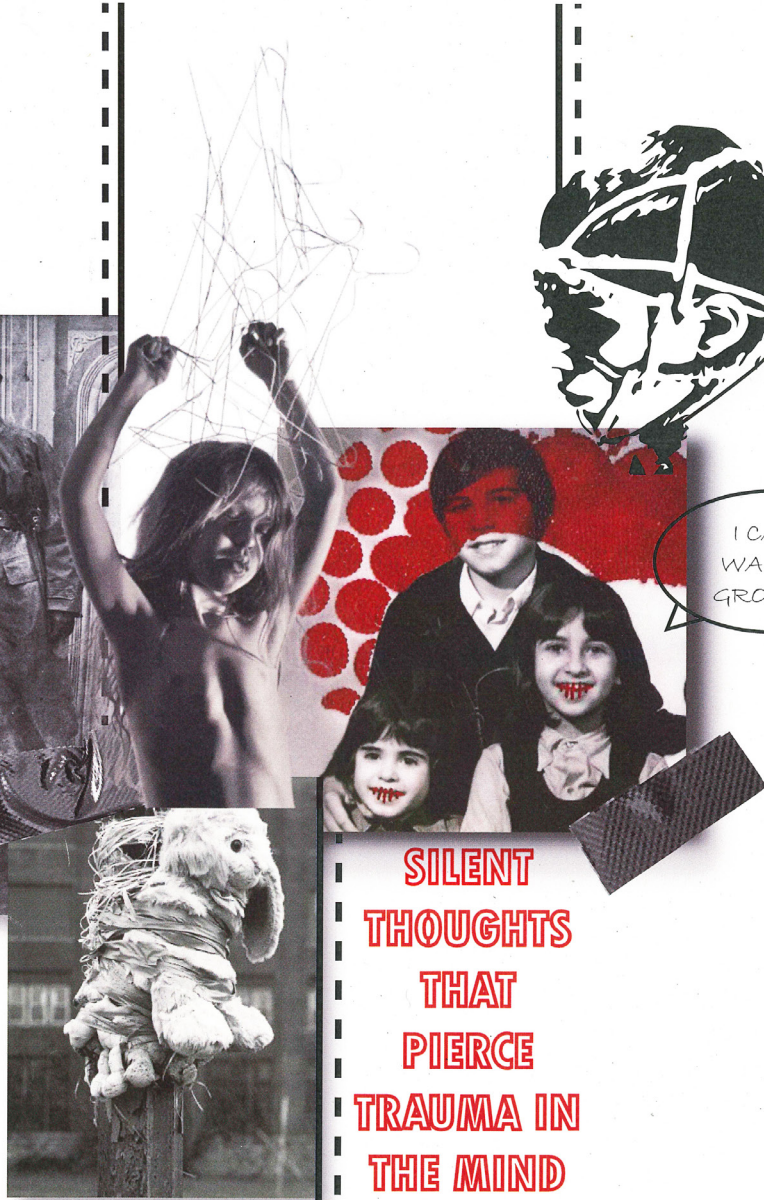


Bath Spa
Fashion



IT'S A
BIT
LOUD
INSIDE,
SORRY



I CAN'T
WAIT TO
GROW UP!

SILENT
THOUGHTS
THAT
PIERCE
TRAUMA IN
THE MIND

MOODBOARD



WHERE DO YOU FIND YOUR COMFORT?



Thinking about protection: weighted blanket Coat or Jumper?



Detachable neck piece

Detachable neck piece with silver metal rings



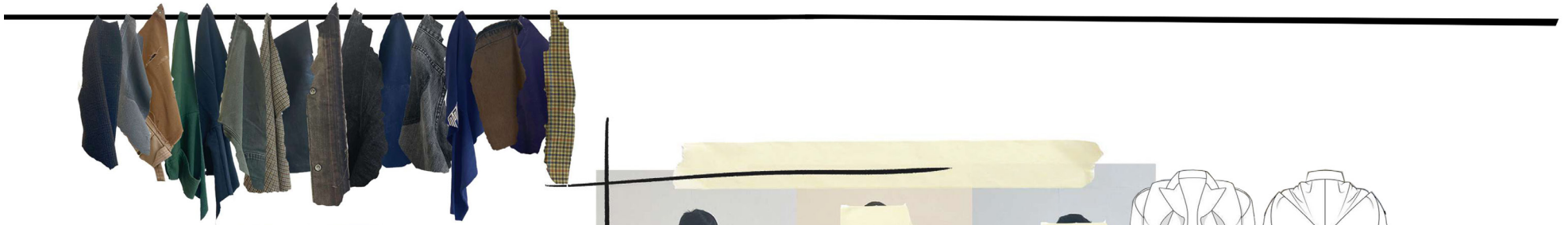
Deadstock Yarns!



"IT'S ALL IN YOUR HEAD"

A/W24

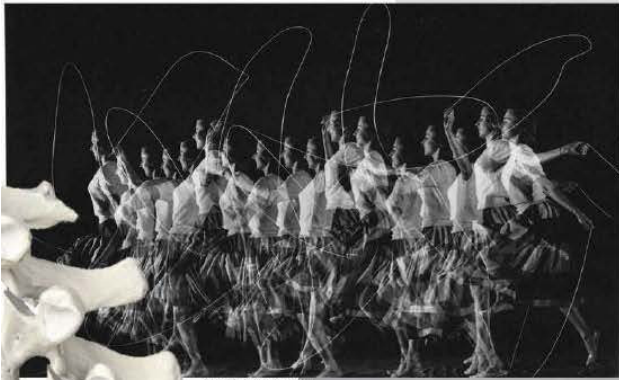






Stroboscopic mood board

[Stroh-buh-skohp-ik]



Harold Edgerton 1952



Emily Dennis 2022 Stroboscopic

anatomystandard.com



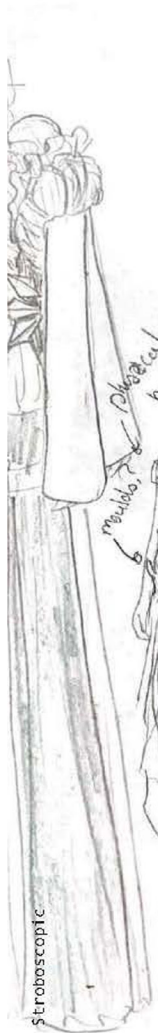
Tomasz Szkodziński

Jacques-Fabien Gaultier d'Agoty 1745

Nhu Xuan Hua 2015

National Geographic

Steve Downer - youtube



physical hands
hood structure influenced by strobe photos



draping, strips at bottom

design response



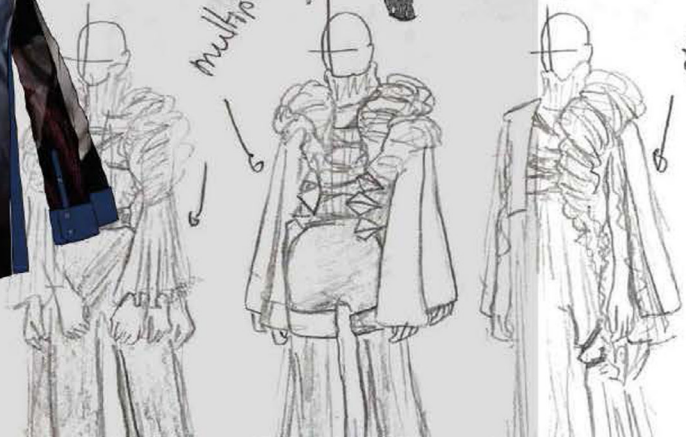
stroboscopic photography



multiple limbs



multiple arms / sleeves



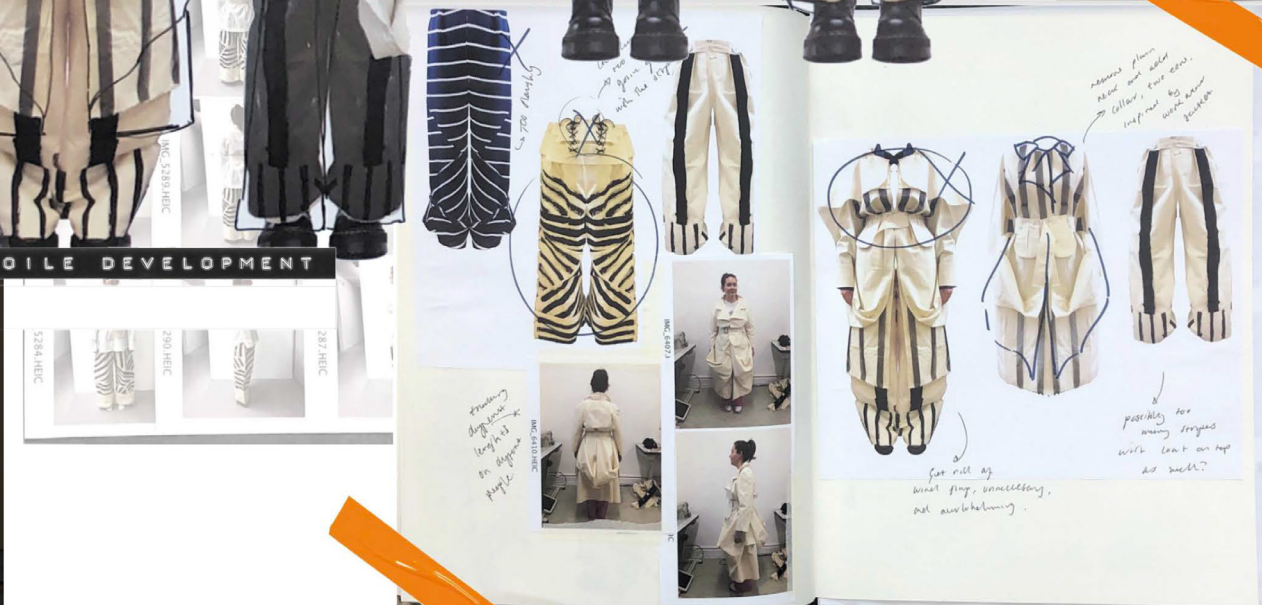
9/14/21



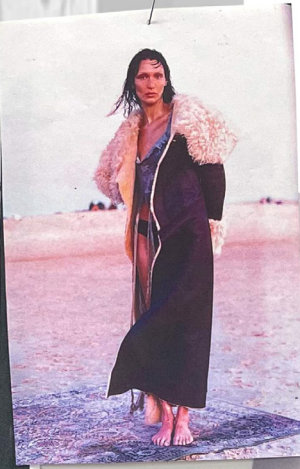


looks 2 and 4 range plan

Emily Dennis 2022 - S

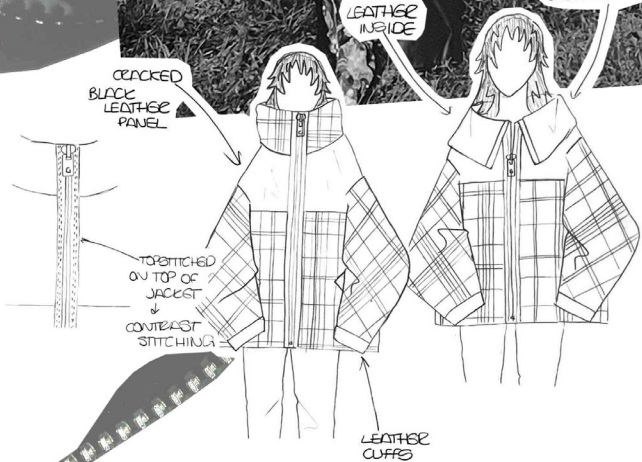
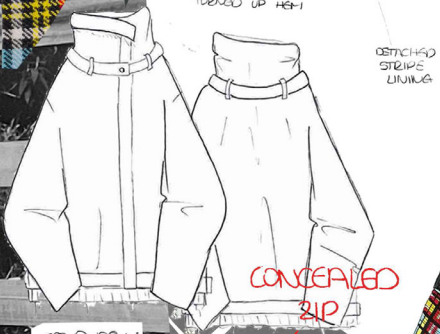


MOODBOARD



BLACKWATCH

BALLOON SLEEVE JACKET DEVELOPMENT



CRACKED BLACK LEATHER PANEL

LEATHER INSIDE

FOLD OVER COLLAR

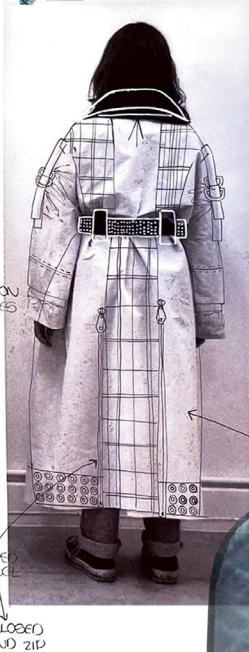
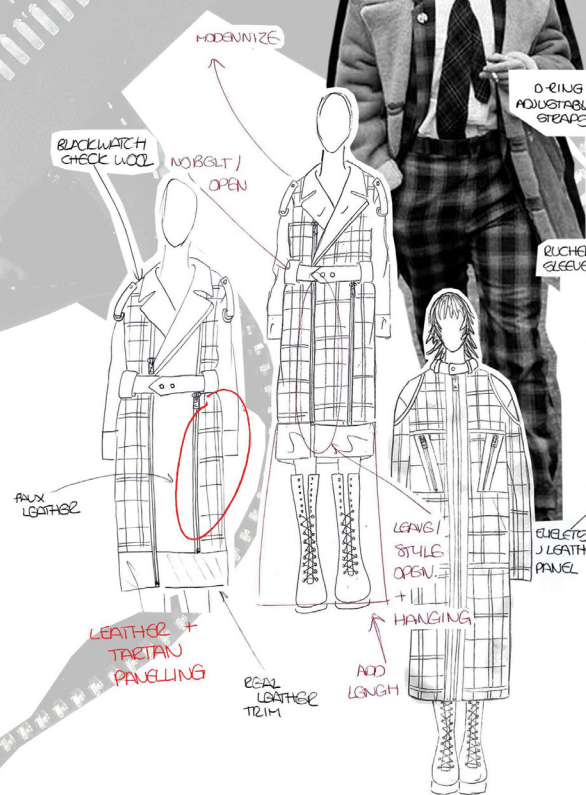
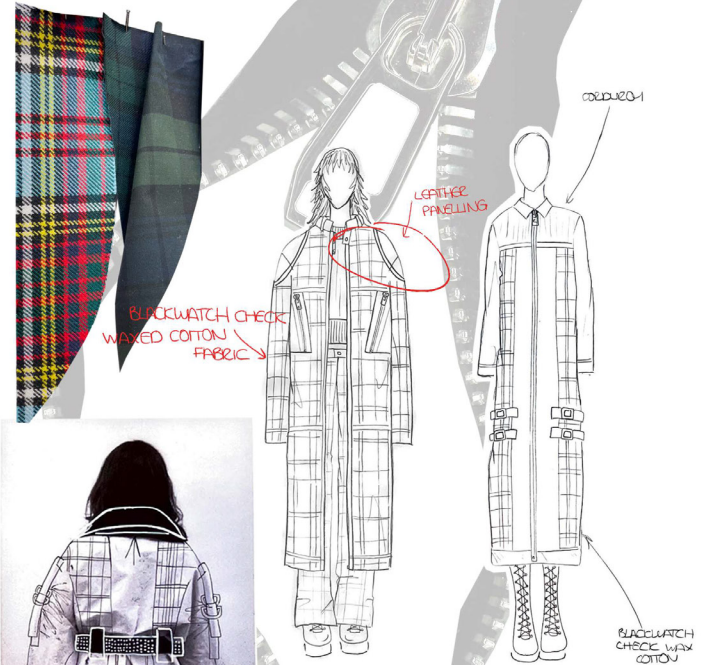
LEATHER CUFFS

BLACKWATCH

TARTAN SELECTION



TARTAN SELECTION AND DEVELOPMENT



BLACKWATCH



POWERFUL



Water as fabric...
- Translucent
- Malleable
- Reflective
- Visually lightweight,
despite its heavy
- Sticky
- Sense of effervescence





Madeline Komar

Angular, 'diamond shape' drapes like fabric on bias



Too much contrast between tortoiseshell + white buttons?
- Try clear ones instead

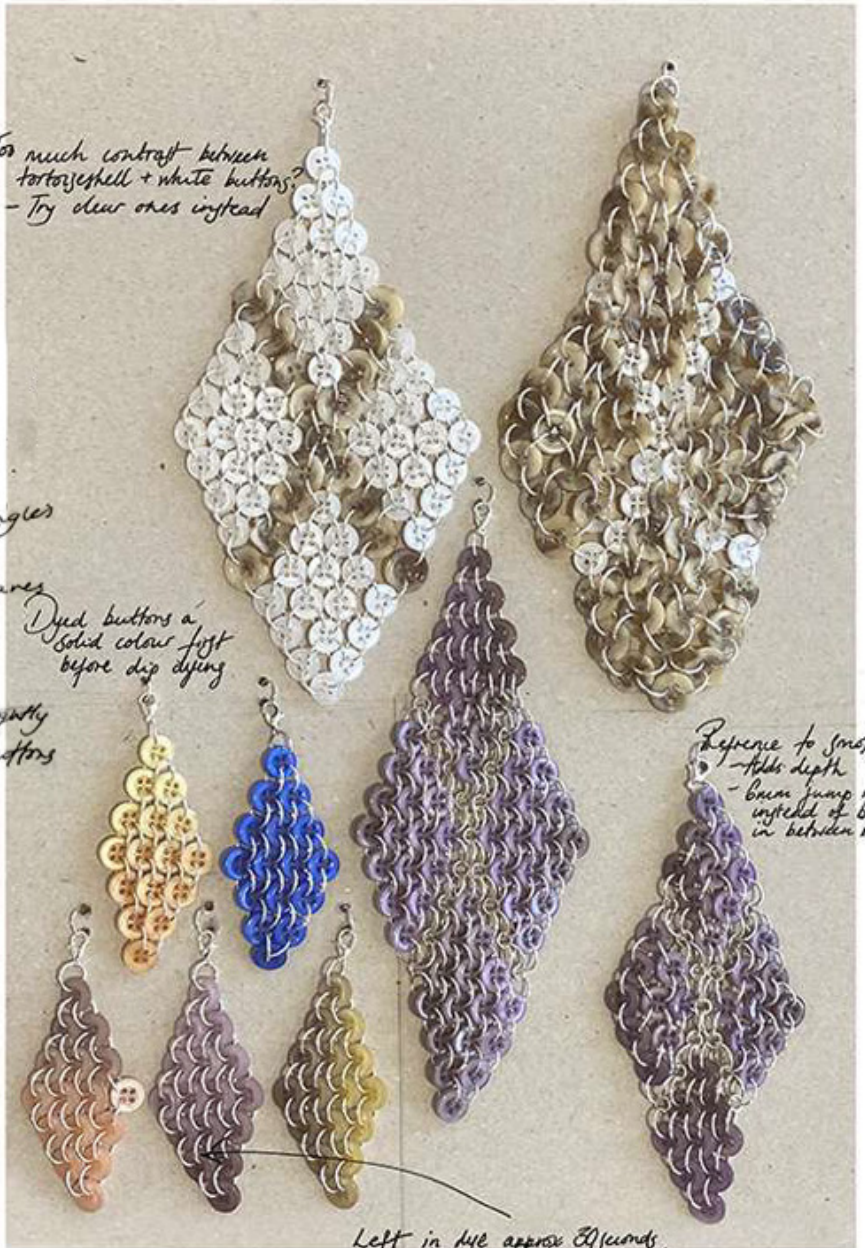


Corrected 2 rectangles to create boje on body + see how the button fabric behaves when draped

Each rectangle slightly bigger - creates a small void - add buttons to exaggerate?



Taco Rabanne



Dyed buttons a solid colour first before dip dying

Reference to smoke/fire - Adds depth - brass jump rings instead of buttons in between panels

Switching sides of strap creates a more defined void underarm detail, looks more purposeful + adds movement - Water like, heavy but liquid



Like how the buttons fall slightly the corner blends in

Left in eye approx 30 seconds too long - came out too dark. Prefer a lighter + warmer tone



spinach

paprika

Dyeing tumeric, paprika & spinach on fabric similar to Tencel

tumeric



same dress on my mum and sister (worn through generations)



Ribbon ties

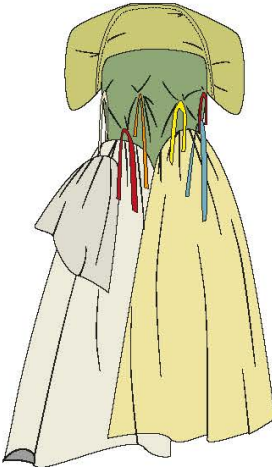
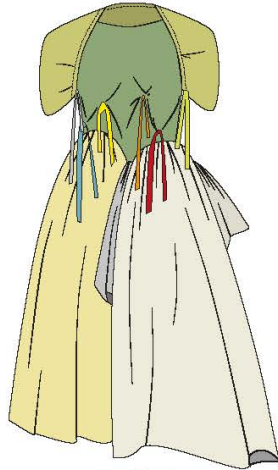
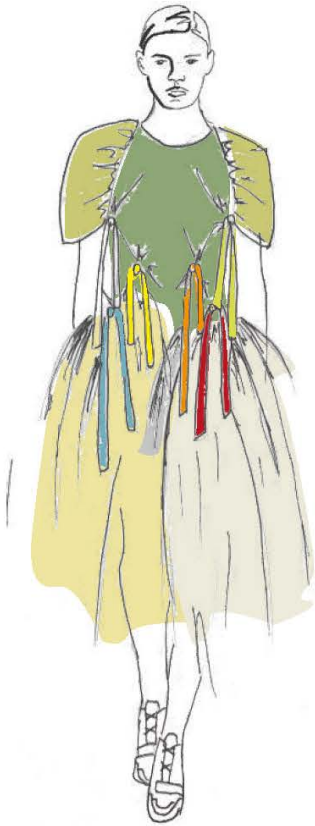
Outfit Two

Not ruched

Front

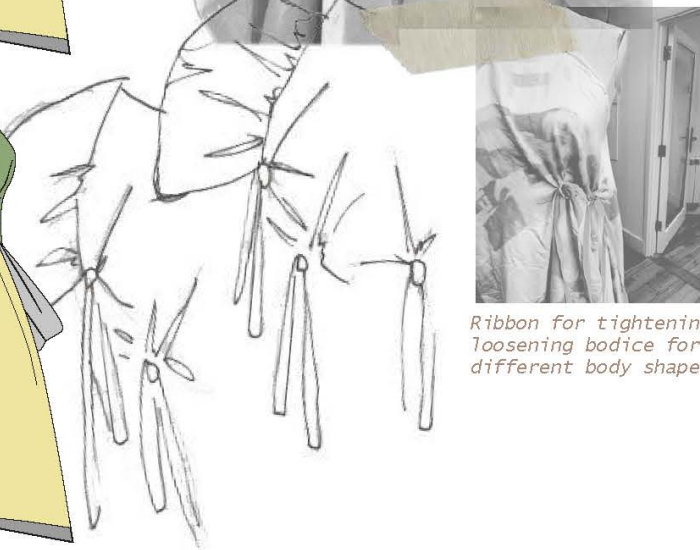
Back

Side



Drawstring threaded through sleeves and back for adjusting

Ruched



Ribbon for tightening/loosening bodice for different body shapes

Ruching along arm and along back all in one for maximum sizes



TIM WALKER



GWEN STEFANI



NIGHTMARE ON ELM STREET



PAGE 245, FROM LEFT TO RIGHT: QUINCY WEARS PANTS BY GUCCI, JACKET BY MM6, SHOES BY SAINT LAURENT BY ANTHONY VACCARELLO, SHIRT FROM HAMLET'S VINTAGE AND JEWELRY BY DAVID YURMAN. BRANDON WEARS COAT BY DOLCE & GABBANA, SHORTS BY TELFAR, SHOES BY AIR JORDAN, SOCKS AND HAT FROM THE SOCIETY ARCHIVE



→ Strap detail running to front



→ Strap running from breast to around neck under north lapel.



Buckle detail running behind lapel



Panel detail running along ribs



Zip detail on side of sleeve.

→ Fake buttonhole/zips at back of garment.

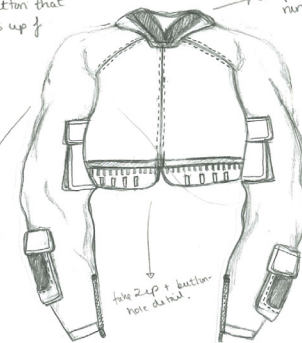
Looking at different dungeness detail that can be used in jacket design



→ 1 button that does up f

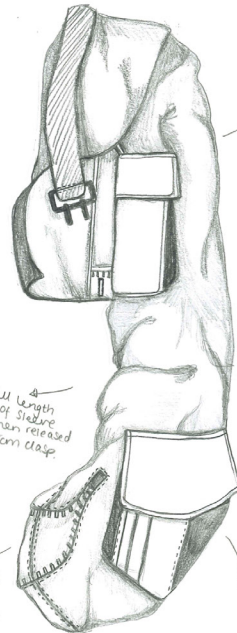
Raglan sleeve

Buckle hanging front strap (detail)



→ Straps that run to front of lapel

Side zip + button hole detail



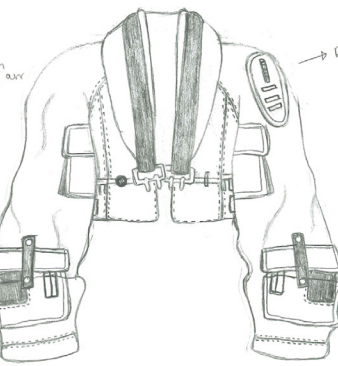
Pocket on inside of arm

Full length of sleeve when released from clasp

Zip opens to make sleeve under

Clasp detail to put sleeve up to waist

Dungeness pocket on bottom of arm



Dungeness detail with fake buttons



Carhartt hip adjuster - (Neat T-shirt Corduroy)

Fear beam

Triple Stitch on beam on Carhartt jacket.

FREDDY'S

FREDDY'S



Thank you
"somebody from"



EMBROIDERY
DEVELOPMENT



ANALYSING FLOWER
PROPORTIONS
ACROSS THE
BODY





FREDDY'S