



# **University of Brighton**

## **BA (Hons) Fashion Design with Business Studies**

### **Class of 2021**

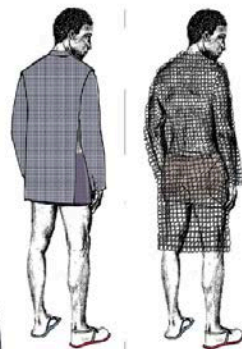
Ciara Knight – Damian Campbell – Millie Smith – Ellie Stillingfleet – Kasper Wahnström

Paige Tennyson Sharman – Raffaella Cosyns – Megan Wheeler – Millie Clark – Chloe Chenery

Leah Gibby – Alice Kirkwood – Donald Keegan Venables – Alice Loosley

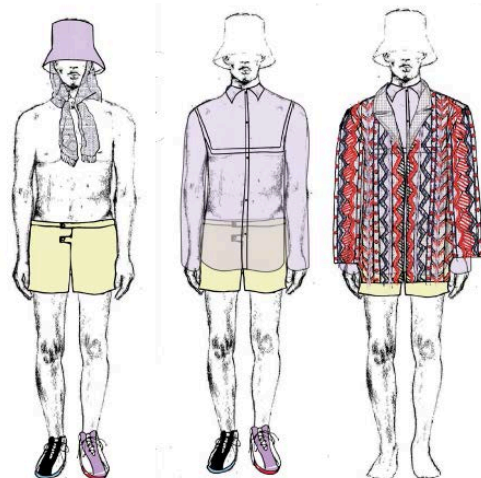
Benjamin Richardson – Lara Fank – Nina Strangwick-Rodgers – Maximilian Jennings

Theodoulos Evangelou – Bianca Avram – Samantha Reeves

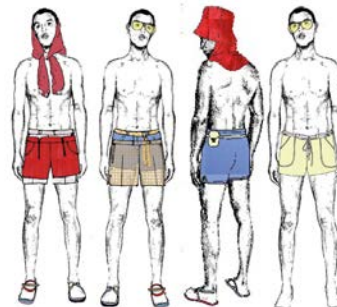
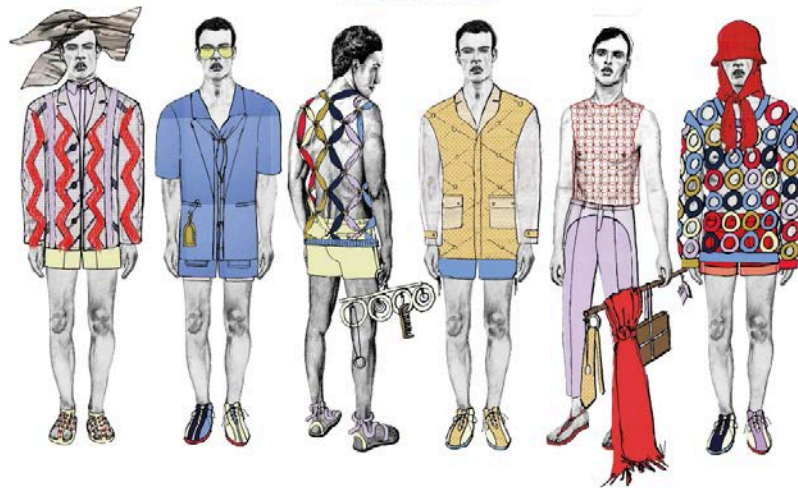


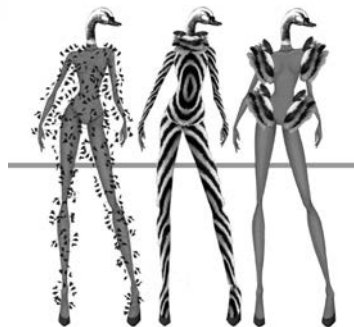
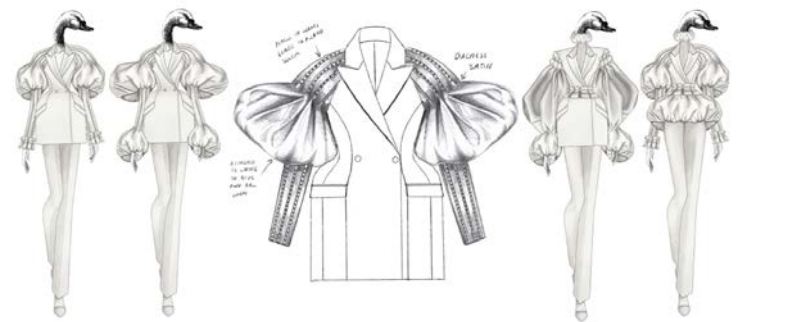
Ciara Knight

Panel yellow shorts with unique button detailing  
Organza shirt with square neck  
Wool tufted mesh coat with knitwear design



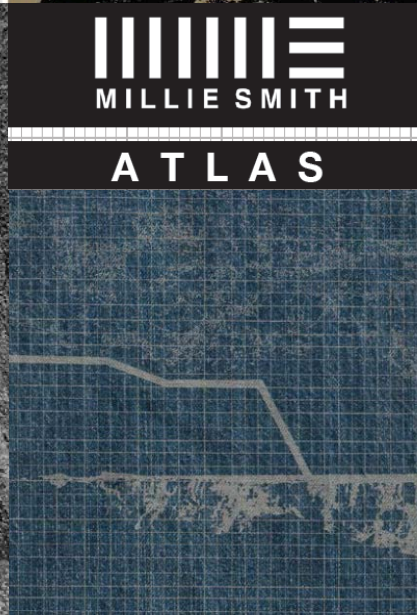
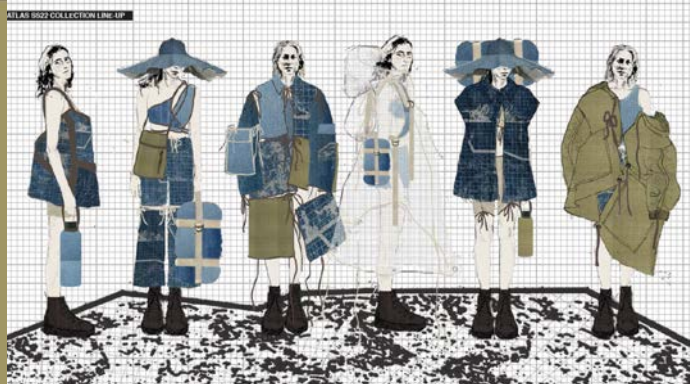
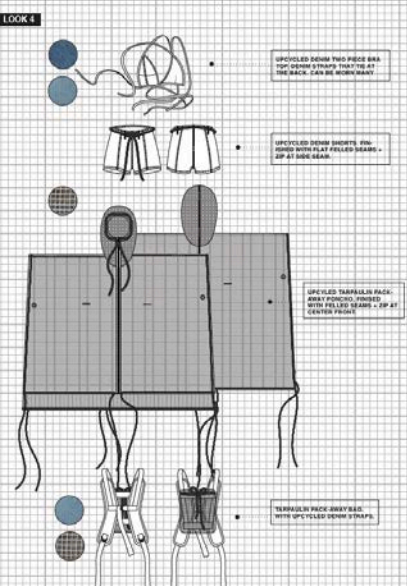
Cabinet of Curiosity  
Menswear SS22





DAMIAN CAMPBELL  
AW 21

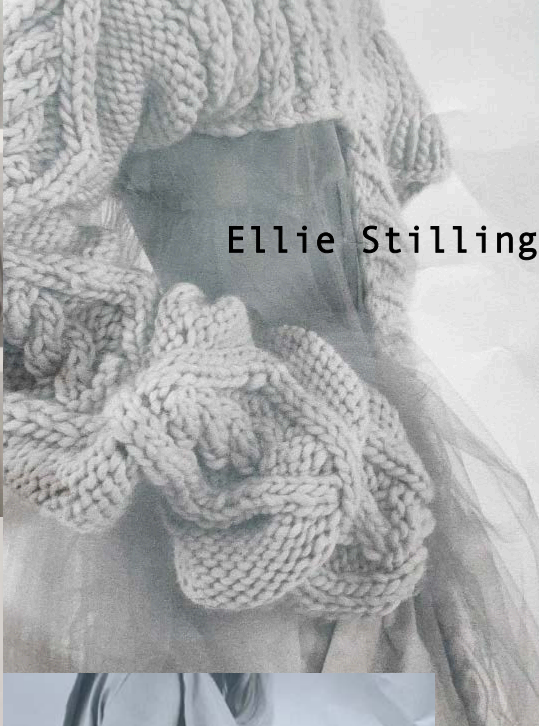








Experimenting with different weights of the

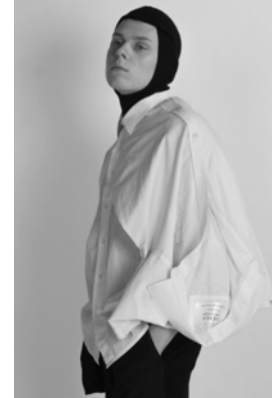


Ellie Stillingfleet





LINE UP



FOLKHEMMET  
POLITICAL METAPHOR  
ARCHITECTURAL REVOLUTION  
1940'S - 1960'S  
FUNCTIONALISM  
COMMUNALITY  
SOLIDARITY  
EQUALITY  
FUTURE



KASPER WAHNSTRÖM



**TENNYSON**  
PAIGE TENNYSON SHARMAN  
MENSWEAR  
RENNAUTO - AW21





Stillwater  
Raffaela Cosyns





# DEFUNCT

AW21 WOMENSWEAR

Megan Wheeler





MILLIE CLARK

KYANDI  
FINAL COLLECTION LINE UP



1



2



3



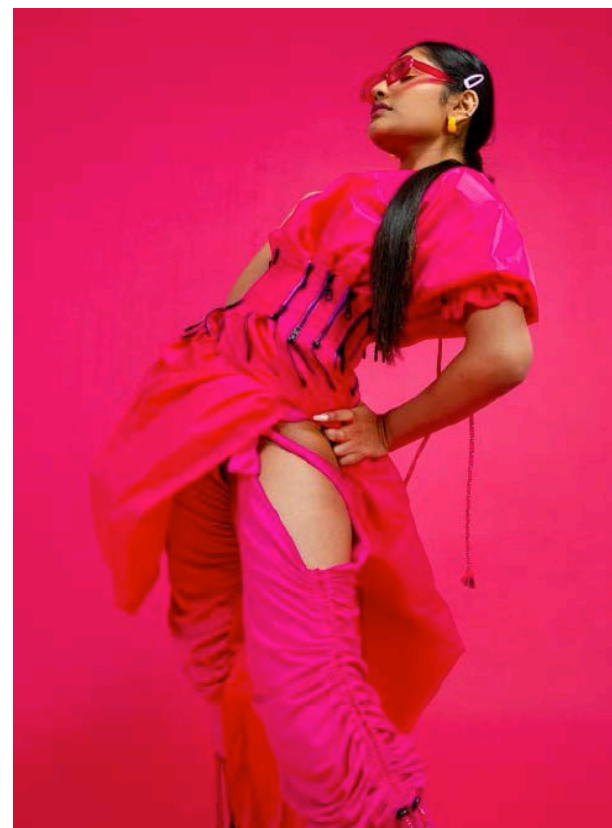
4



5



6



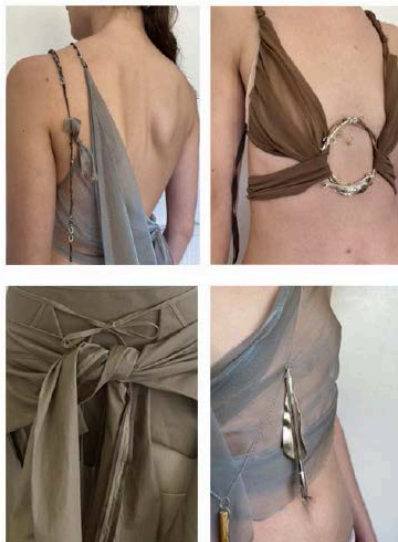


## Details

Natural and found elements casted in Silver



Photographer: OLIVIA NENE ERECHIEVA



One

Two

Three

Four

Five

Six



Chloe Chenery

An odd affinity  
Leah Gibby

Nearly sky



Fiat 500



Tan cladding



Not your front door



Pale ale



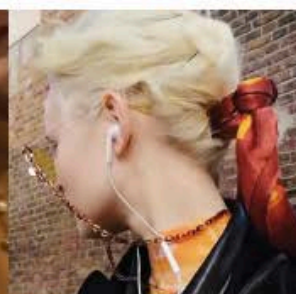
peachy



Nice mustard



Egg yolk



Look 1



Look 2



Look 3



Look 4



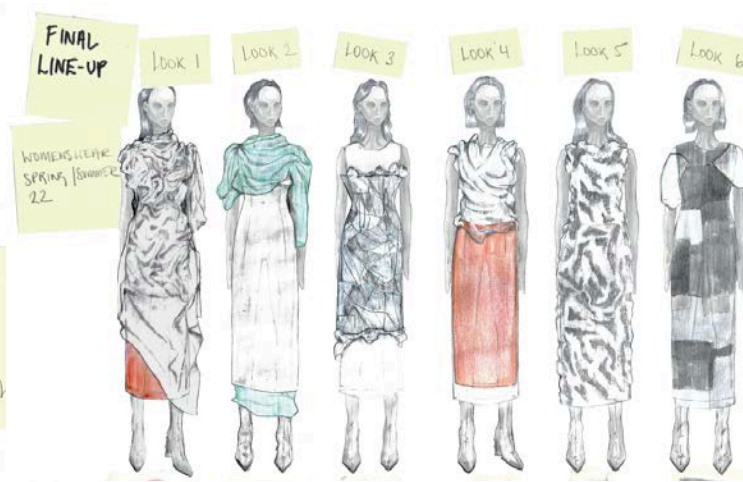
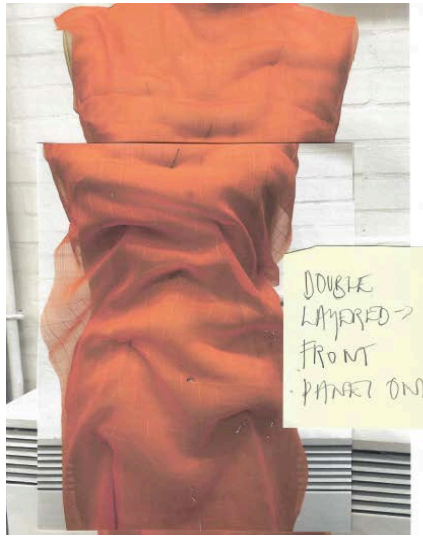
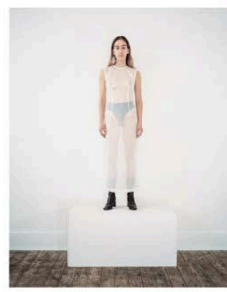
Look 5



Look 6







GRID  
FLOOR  
PATTERNING

WARPED/  
DISTORTED  
PERSPECTIVE

MOOD

DOUBLE  
LAYERED ->  
FRONT  
- PATTERN ON

FINAL  
LINE-UP

LOOK 1

LOOK 2

LOOK 3

LOOK 4

LOOK 5

LOOK 6

WOMENSWEAR  
SPRING / SUMMER  
22

ALICE  
KIRKWOOD

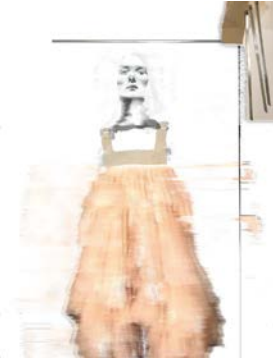


Sheep shears, Selkirk, Scotland

17.0392° S, 30.4391° E  
55.5507° N, 2.8385° W  
32.4970° S, 115.7683° E

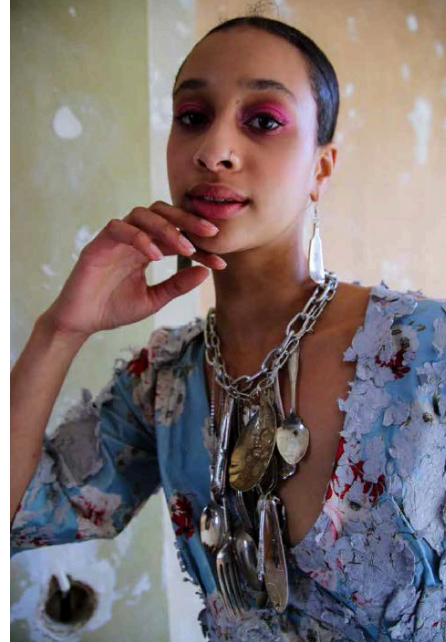
## TOWARDS THE SINKING SUN

DONALD KEEGAN VENABLES





**Ethel** wears a brown paper dress, with a curled fork belt. The dress is covered with cut out florals, applied with brown tape, resin and sticky back plastic.



**Alice Loosley**



**Beryl** wears a waxed cotton, tailored jacket, embellished with laminated florals, over a hot pink, hammered silk blouse. Alongside this, she wears a floral silk skirt partly covered with brown parcel tape, and a resined brown paper underskirt to give volume.





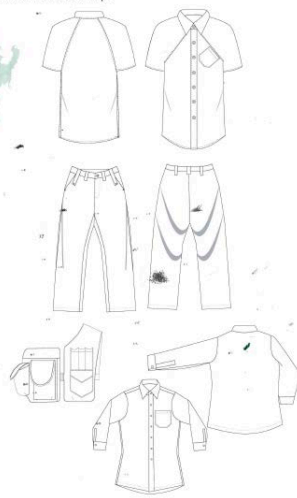


GRAPHIC TEXTURE

Benjamin  
Richardson

#### LOOK L

is comprised of an speckled denim overshirt with striped panels created by pulling out certain threads. Underneath is a short sleeved raglan shirt in cotton rip stop. The trousers are made from upholstery fabric and have an engineered drape. They feature a cord holder secured with nautical sister clips.







Lara Fank

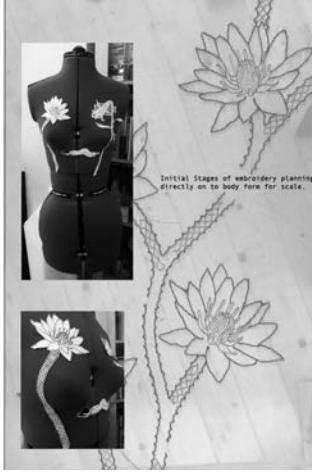




Look 2: The Lotus waters



Motifs:  
Blue/White  
Lotus Flowers  
(Overlaid on  
a white lotus  
flower)  
White Lotus  
(Floral)  
Forget Me  
Not (Floral)  
Daisy  
Figures -  
Surrounded by  
plants and  
legs bound in  
vine



## Descent In To The Maenadic

Nina Strangwick-Rodgers



Look 4 Madness:



Look 6: Endowment

Motifs: white lotus  
white lotus flowers  
sage, Rosemary  
Daisy  
Central Figure - Surrounded by plants with draped garment  
And light behind head.







## AW/22 RANGE PLAN

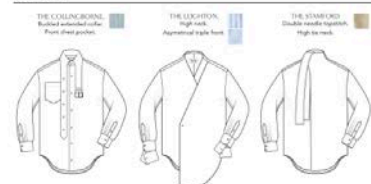
### OUTERWEAR



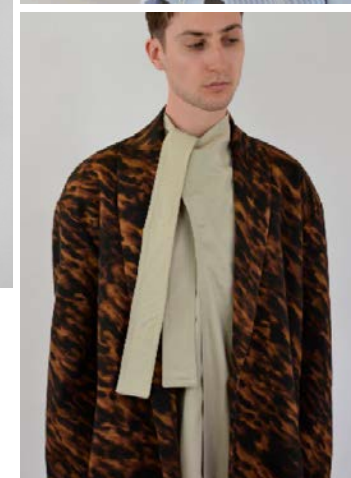
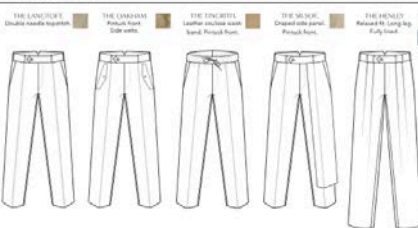
### KNITWEAR / JERSEY



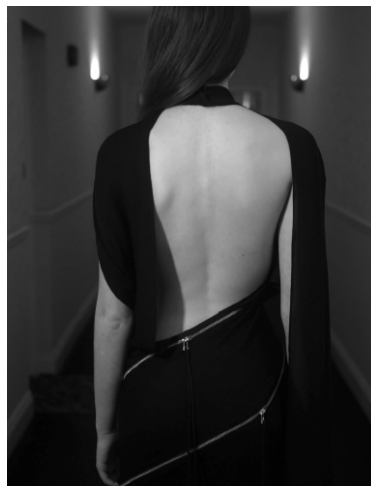
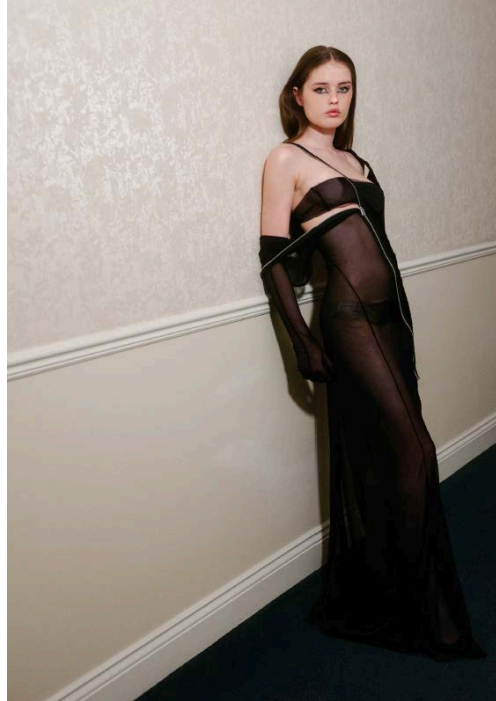
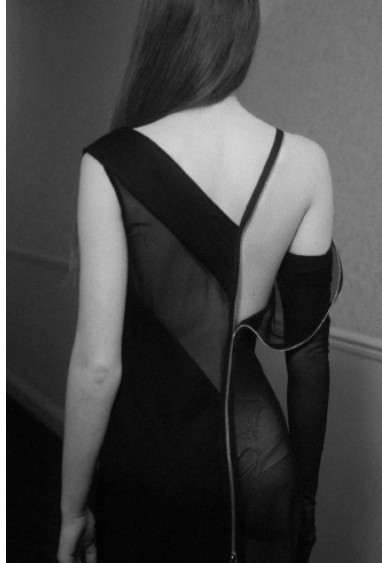
### SHIRTS



### TROUSERS



Maximilian  
Jennings



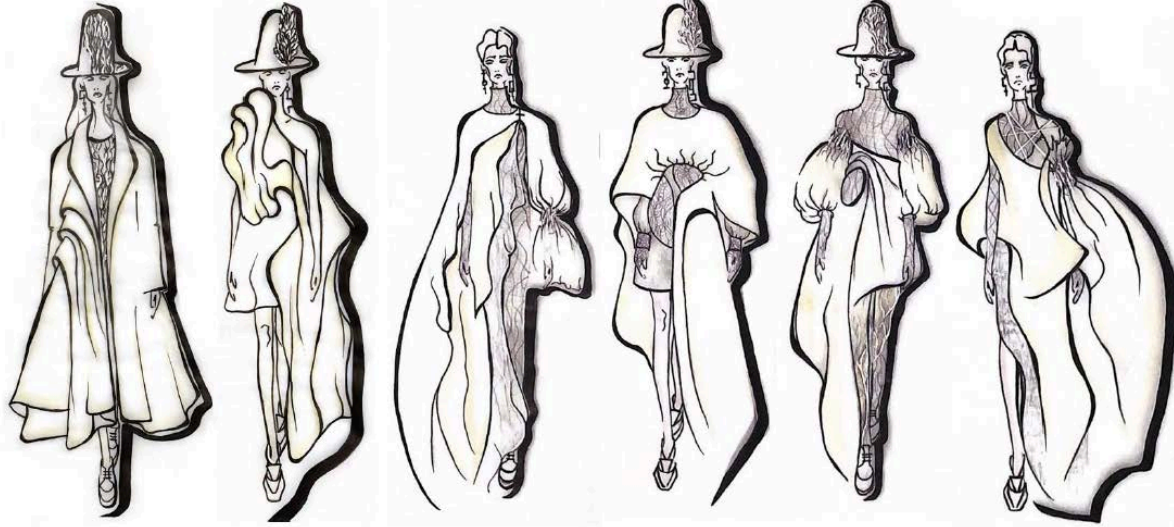
Theodoulos Evangelou



# MAIASTRA

SPRING/SUMMER 2022

*Final Collection Line-up*



Bianca Avram



displaced waistband



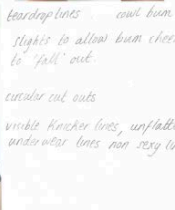
sharp shoulder front, side curved sleeve rem.  
smooth lines, unnecessary



Restrict Reveal

capped sleeves emphasise  
broad shoulders

waist coat curve with capped  
sleeve, mirrored on other side



curved reveals

boarder lines - cover bum  
slights to allow bum cheeks  
to 'fall' out

circular cut outs

visible knicker lines, unflattering  
underwear lines non sexy line



unsexy gashers  
around crotch  
draws eye and focus



young on vagina  
don't reveal very much

over gather  
would annoy  
from leg

waist dim strap  
hell suspend straps

displaced dim +  
dark line line

no showing chaps  
bum, crotch, no under  
wire, easy access  
to pressure

oval gather under  
bum cheeks, short

## Samantha Reeves

Our Bodies Bathed in Light

Our Bodies Bathed in Light brings distorted decadence to the mundane being in order to redeem their own sexuality. A women's wear collection playing with themes of modesty and uneasy reveals of skin. Sensual fabric drapes will be engulfing the body while partial body fit pieces bring structure to the inconsolable, in terms of conscience condition and floating fabrics. This collection looks to the state of undress and the unrest of an interrupted intimacy of the anonymous woman. I wish to solemnize this substance of being with sensibility and reflection of the female form, in hope to subvert and therefore undermine outdated institutional standards of the feminine.



Final Line Up

One

Two

Three

Four

Five

Six