

WSA BA FASHION DESIGN

Winchester School of Art

UNIVERSITY OF
Southampton

The BA Fashion Design Programme at Winchester School of Art is one of the top Fashion Design courses in the UK. We pride ourselves on producing highly creative, skilled and hands-on design graduates suitable for a range of positions within the Fashion & Textiles Industry.

Every year our graduates take up roles in prestigious companies internationally and in the UK. We also set up internships, competitions and other collaborations with various industry partners.

For enquires or opportunities contact:

Cecilia Langemar

Fashion Design Programme Leader

C.Langemar@soton.ac.uk

WSAbafashion.com

[@wsa.ba.fashion](https://www.instagram.com/wsa.ba.fashion)

Sophie Hicks

Location: Salisbury,UK

UNIVERSITY/COLLEGE:

Winchester School of Art

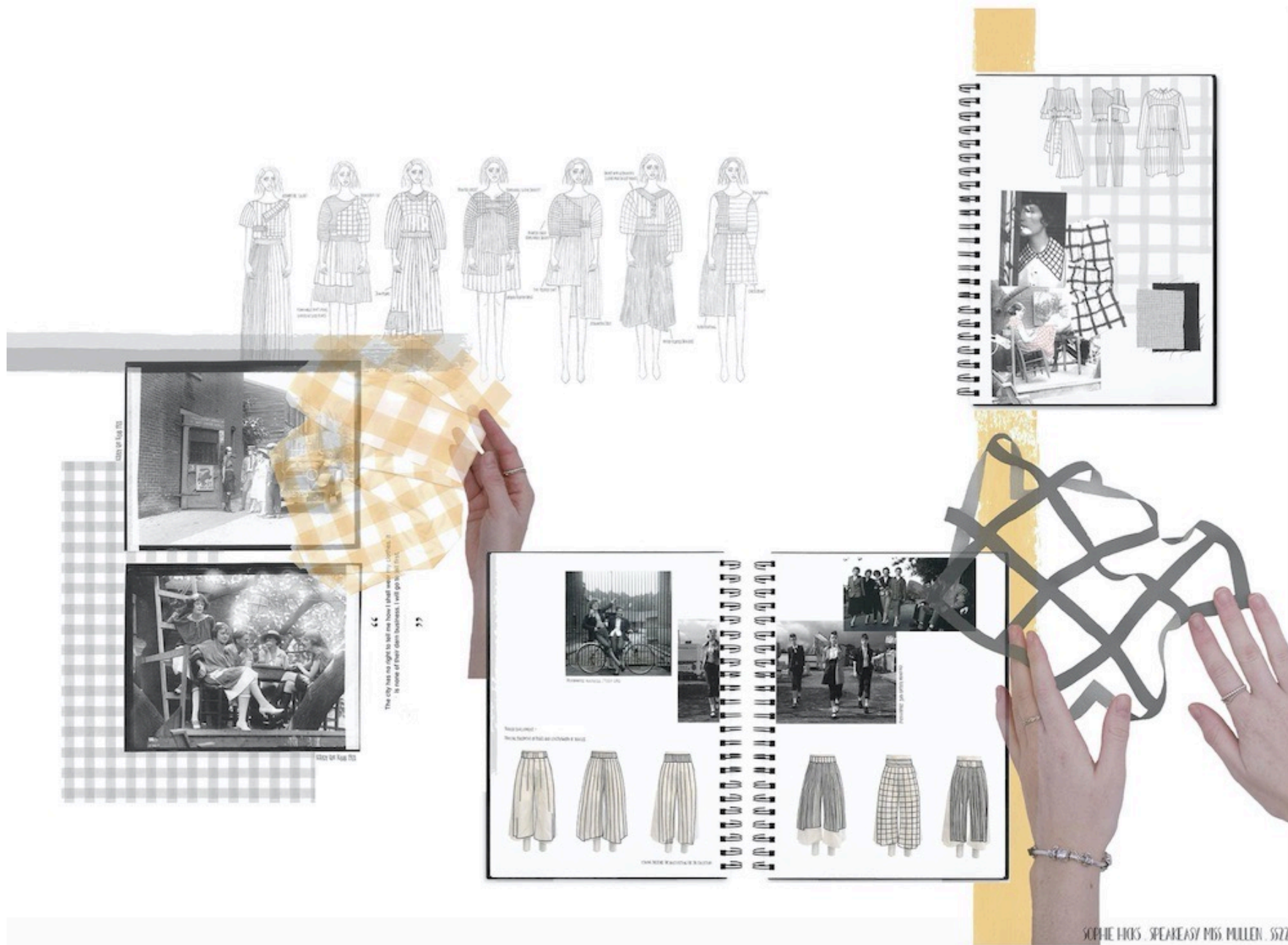
SPECIALISMS:

Womenswear

With sustainability a main focus within Sophie's work, it was important to create a collection that had the option of being interchangeable to reduce consumption. Sophie's collection consists of six modular garments and 10 interchangeable pieces that can be swapped or attached onto each base garment to create over 30 different looks. A sense of chutzpah is added through the 1920s speakeasy Krazy Kat Klub muse Katherine 'Kat' Mullen who pushed the boundaries of style.







LOOK 1

FRONT

BACK



THE ALBHA DRESS



THE KATHERINE PINK SKIRT



THE ALKE OVERLAP

LOOK 2

FRONT

BACK



THE PINK COLLAR

THE KATHERINE OVERLAP



THE KATHERINE DRESS



2020's BOY-ISH HAT?



MAKE SLEEVE LONGER TO MATCH 'JACKET' IN LOOK 6

MOVE COLLAR, SPLIT TIES ON THE SHOULDER



MAKE STRAP LONGER







Caroline Lita Streat

Location: Bournemouth, UK

UNIVERSITY/COLLEGE:

Winchester School of Art

SPECIALISMS:

Fashion Design

'Working Girl', the 80s classic film portrays power dressing at its finest. With exaggerated shoulders and bold silhouettes this is an ostentatious collection with a 'more is more' attitude. Heavily inspired by early Versace and Escada, Caroline has designed her own repeat patterns throughout her collection by using vintage horse brasses. Caroline likes to focus her attention to detail and her process incorporates customized second-hand items that she uses for styling and creating unique outcomes.

The Golden era of The Working Girl
AW22



CAROLINE LITA

The Golden era of The Working Girl

AW22



The Golden era of The Working Girl

AW22

LOOK 1 - THE PATRICIA POWER SUIT



LOOK 2 - THE CRYSTAL CO ORD



CAROLINE LITA



The Golden era of The Working Girl

AW22



The Golden era of The Working Girl

AW22

LOOK 4 - THE JENNIFER JUMPSUIT



DETAILS:
WELT POCKETS
ELASTIC WAISTBAND
FLY ZIP
TWO HOOK & BARS
FOUR BUTTONS

MADE FROM RECYCLED FABRIC
FOIL PRINTED USING MY OWN PRINT DESIGN
HORSE BRASS REPEAT PATTERN

CAROLINE LITA





Lydia Vere Gilbertson

Location: Winchester, UK

UNIVERSITY/COLLEGE:

Winchester School of Art

SPECIALISMS:

Womenswear / Styling

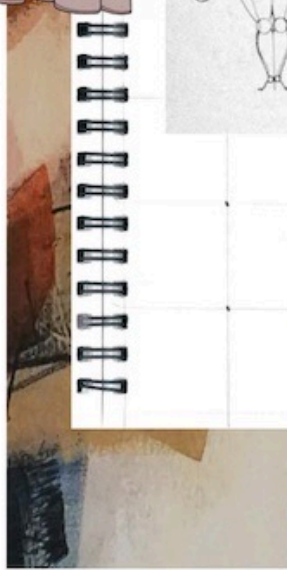
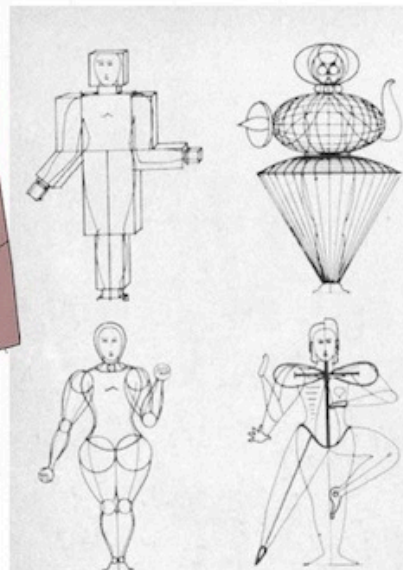
Heritage and practicality are influential themes that run through Lydia's work. The final outcomes of her process always consider wearability and sustainability. Utilizing fabrics and materials that are environmentally friendly are paramount to her process. Looking to workwear and uniforms inspires the colours and silhouettes of her garments. In final outcomes there is attention to detail in styling, with accessories being designed and created out of existing materials.

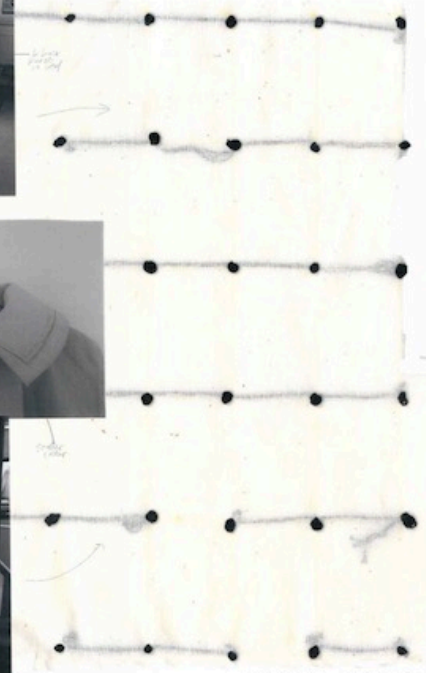
PRETTY BRUTALISM





CURVED SHAPES
AND COMFORTABLE
SILHOUETTES

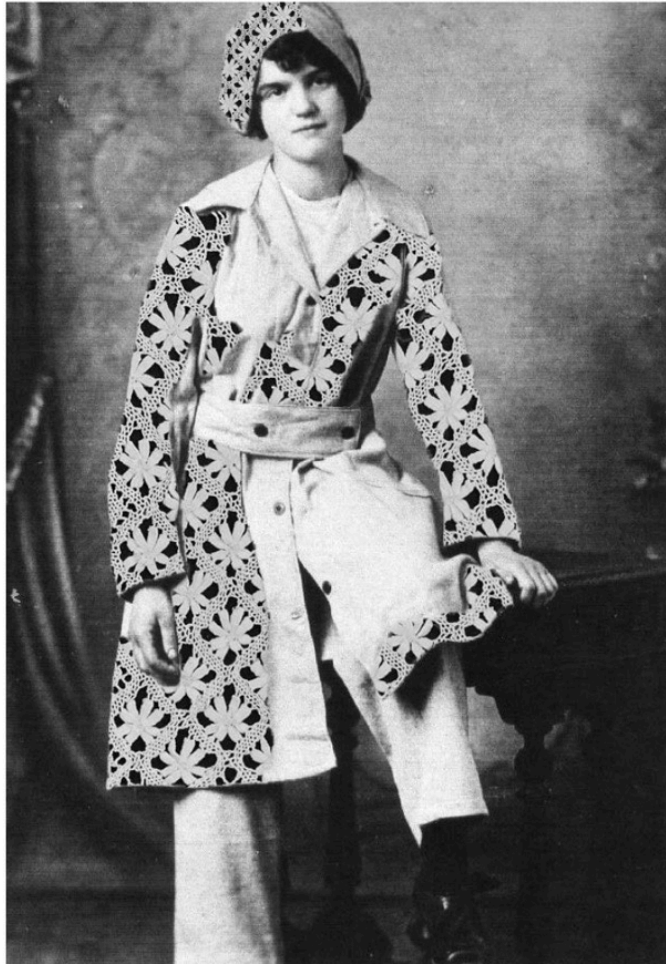




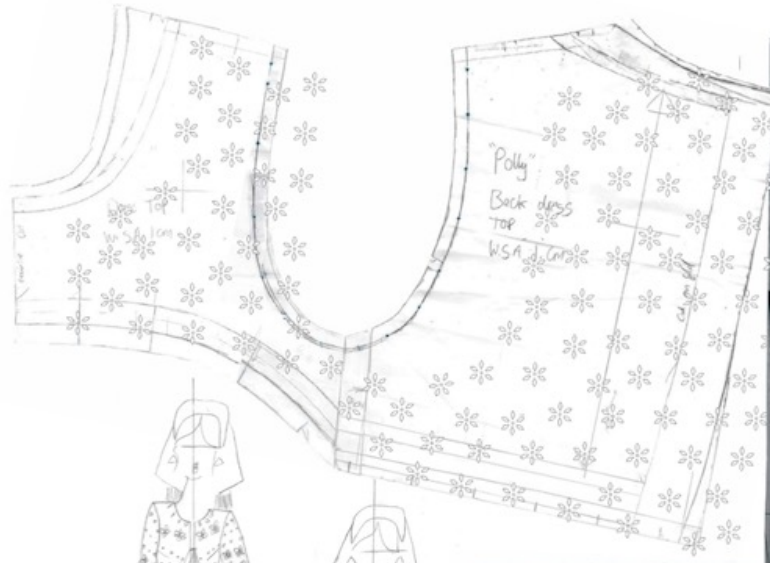
FRENCH KNOTS



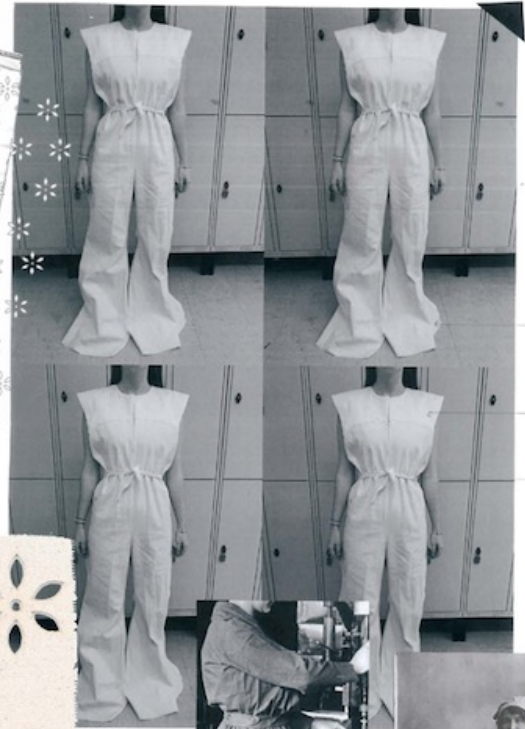
FROM THE NORTH SIDE



THE "MUNITIONETTES"



LASER CUT LACE





Mercedes Ridge

Location: South West Wales, UK

UNIVERSITY/COLLEGE:

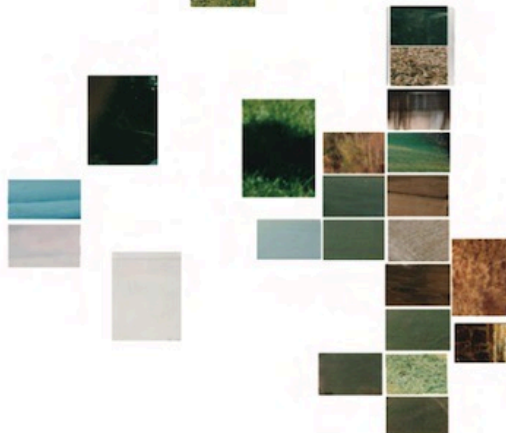

Winchester School of Art

SPECIALISMS:

Womenswear

As a Welsh designer brought up in the countryside, Mercedes has a passion for sustainability and the ethicality of materials. As such she has specifically used traceable fabrics sourced in the UK for this collection, in hues of green, reminiscent of the rolling hills of home. The printed fabric carries Mercedes own design, while the other materials in the collection remain organic and/or dead- stock, enabling her to adhere to her sustainable roots.





Welsh Tartan
Welsh
Welsh
Welsh



Shades of Green



Welsh museum archives



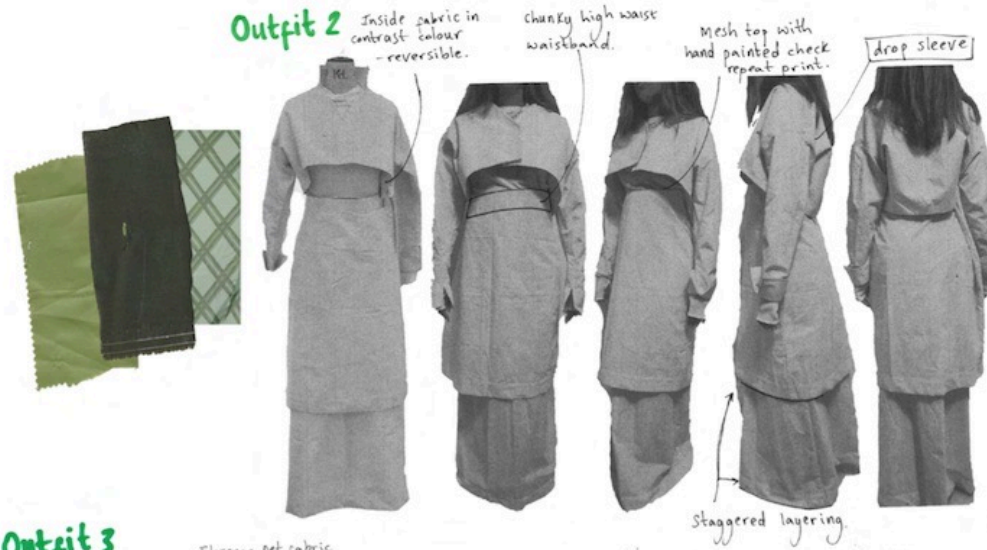
Layered silhouette



Outfit 1

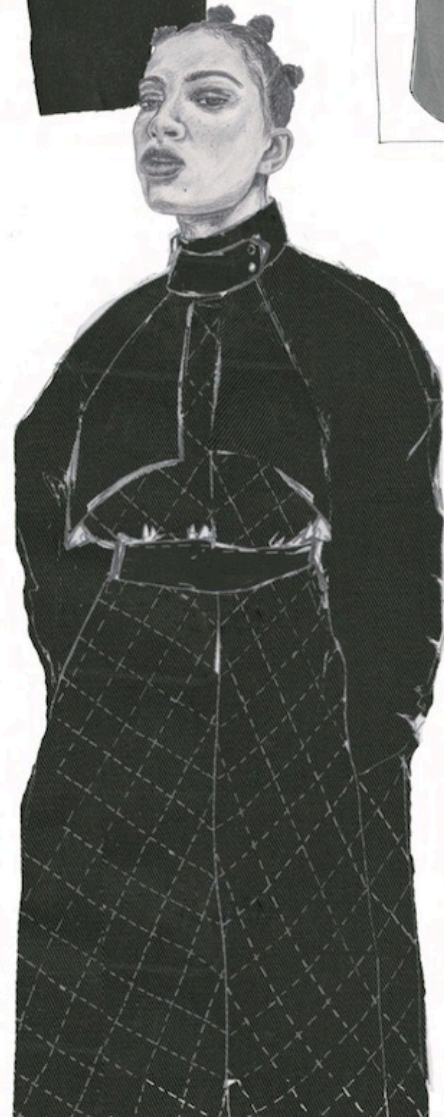
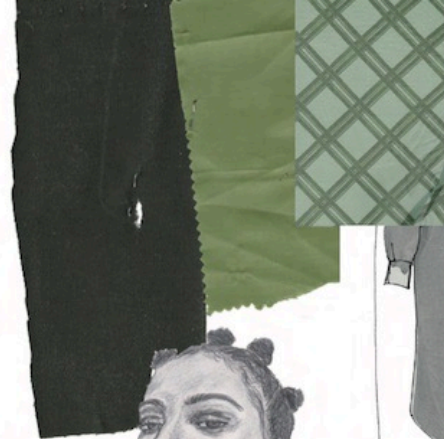


Outfit 2

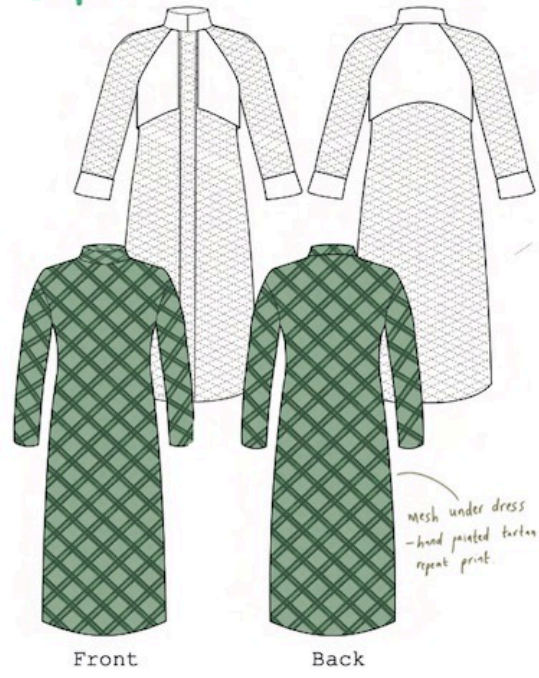


Outfit 3





Outfit 4





Hannah Vatcher

Location: Winchester, UK

UNIVERSITY/COLLEGE:

Winchester School of Art

SPECIALISMS:

Womenswear

Whilst trying macramé on Zoom, Hannah was struck by the contrast and connection of technology and craft. Further exploration uncovered the Industrial Revolution's links with the Arts and Crafts movement and the DIY styling personified by the punk era and Judy Blume on the cusp of the World Wide Web in the 80s. Circuit boards as block prints and hand dyed fabrics tells the story of how craft is embedded in human nature.



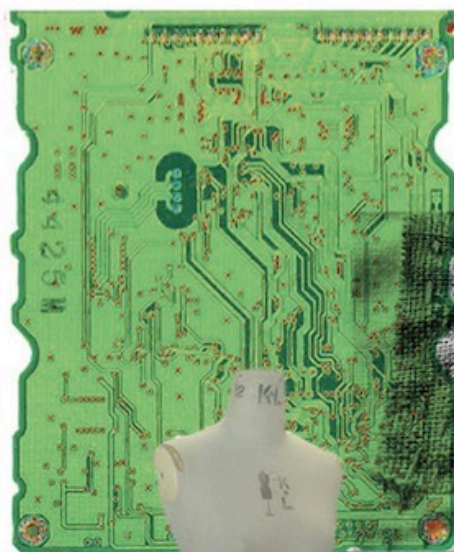
SELF DYED FABRICS

OLD SHIRT

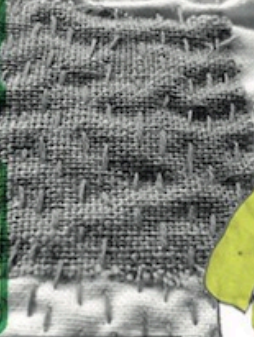
OLD SHIRT

LOGTAIL

PLEATING ON THE STAND



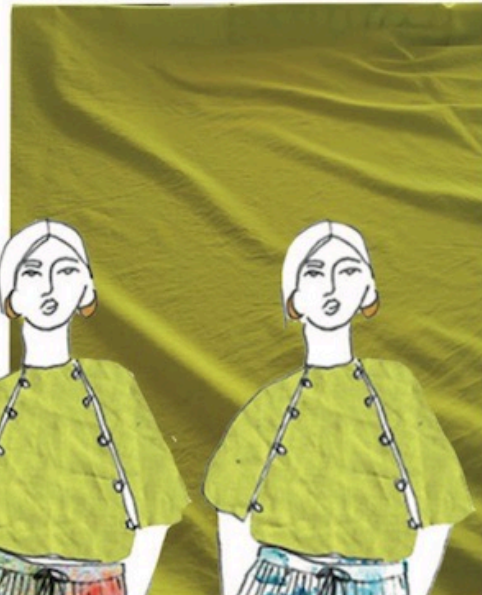
KANTHA STITCHING-ESTA KAUL



3D PLEAT
DEVELOPMENT



SELF DYED FABRIC



HAND PRINTING WITH CIRCUIT BOARDS





ANDRÁS-ANTONIO AZULLO



KIMONO INSPIRED PATTERN, USING
SPORTSWEAR INSPIRED DETAILS AND
SEAMS TO INCORPORATE UNDERARM GUSSET



DISTORTED PLEATING



BOWIE IN KOSAI YAMOTO

RE-CONNECTED
LINE UP





Yubing Luo

Location: UK, Winchester

UNIVERSITY/COLLEGE:

Winchester School of Art

SPECIALISMS:

Womenswear

Yubing Luo has loved colours and painting since childhood and has for this collection researched the 'lost children of China', their toys, clothing and art resulting in a youthful, childlike womenswear collection, drawing attention to the plight of these children. She is committed to transforming fashion by using less harmful fabrics and digital printing and hopes to have a positive impact on future fashion in China.

My project involves children. I used some information about left behind children as a starting point. I am doing this because I want to understand the current situation of left-behind children in China. They represent a group of forgotten and uncaring children, and I have donated money to these groups to help them before, which has raised my attention to this group, I wanted to know about them.





Lonely
independent
clothes
home
Parents

People outside the color

Printing

I used colors and elements that children like, such as round balls and flowers to redesign.



I studied the details of
some children's clothing, and
combined different brands of
outfit to make collage to
show the outline/silhouette.





the board on the left is a comparison between my childhood clothes and other children's clothes, you can clearly see the elements of colors and flowers

These are the prints I dripped with water colour on the paper. The colour blooming also feels like the flower is blooming.





Inspiration Board



Sketches



Designs





Cheng Qian

Location: Winchester, UK

UNIVERSITY/COLLEGE:

Winchester School of Art

SPECIALISMS:

Womenswear

Cheng Qian is a womenswear designer focusing on creating sustainable fashion and textiles. She often draws inspiration from Asian fine art, future fashion and material culture. Qian prefers to make her own unique fabrics through hand-drawn prints, natural materials and dyes. By mixing her Chinese heritage and global mind, she creates modern garments that embrace both Western and Eastern culture.



頁が枯竹の
ち果てた
第十三の書
死に処刑者
汗還頑意書古
し髪頭物
する必す
体とす
る山はわ

NEIL BOOK
する必す
体とす
る山はわ



THE PILLOW BOOK

WHAT DO PEOPLE CHOOSE TO WRITE IN THEIR DIARY?

WHY DO THEY CHOOSE TO CARVE THEIR SKIN?

WHAT IS THE RELATIONSHIP BETWEEN HUMAN SKIN AND NATURE?

昔の
つづきの
ことすもあらをいふ

COLLAGE WITH INK PAINTED STOCKING



ILLUSTRATIONS



ORIGINAL LINE UP

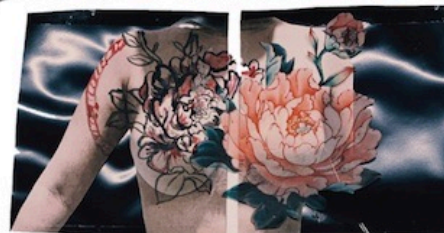


FABRIC INSPIRATION

INK DRAWING ON PHOTO THAT SIMULATE CALLIGRAPHY AND TATTOOS ON BODY



PRINT DESIGN INSPIRED BY MONSTER CALLED HANNYA IN JAPANESE FOLKLORE, OFTEN REPRESENTS WOMEN IN JEALOUSLY WHO ARE EAGER TO REVENGE, JUST LIKE NAGIKO FROM THE PILLOW BOOK.



FABRIC SAMPLES FRONT LEFT TO RIGHT:

TEA DYED COTTON ORGANDIE

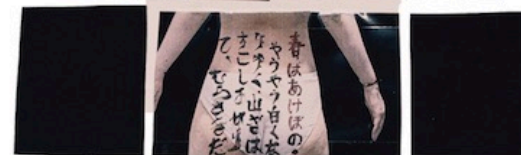
TEA DYED MUSLIN

TEA DYED PRINTED COTTON SATIN

TEA DYED PRINTED SILK SATIN

NUDE LATEX

TEA DYED SILK GEORGETTE







WSA BA TEXTILE DESIGN

Winchester School of Art

UNIVERSITY OF
Southampton

BA Textile Design is rooted in WSA's longstanding tradition of excellence in textiles. We teach the latest digital techniques as well as traditional manual processes, encouraging our students to explore old and new methods in innovative ways.

Every year our graduates take up roles in prestigious companies internationally and in the UK. We also set up internships, competitions and other collaborations with various industry partners.

For enquires or opportunities contact:

Rose Murray Langdon

Fashion Design Programme Leader

R.E.J.Murray-Langdon@soton.ac.uk

WSAbatextiles.com

[@wsa.ba.textiles](https://www.instagram.com/wsa.ba.textiles)

Katie Charlotte Greenham

Location: Winchester ,UK

UNIVERSITY/COLLEGE:

Winchester School of Art

SPECIALISMS:

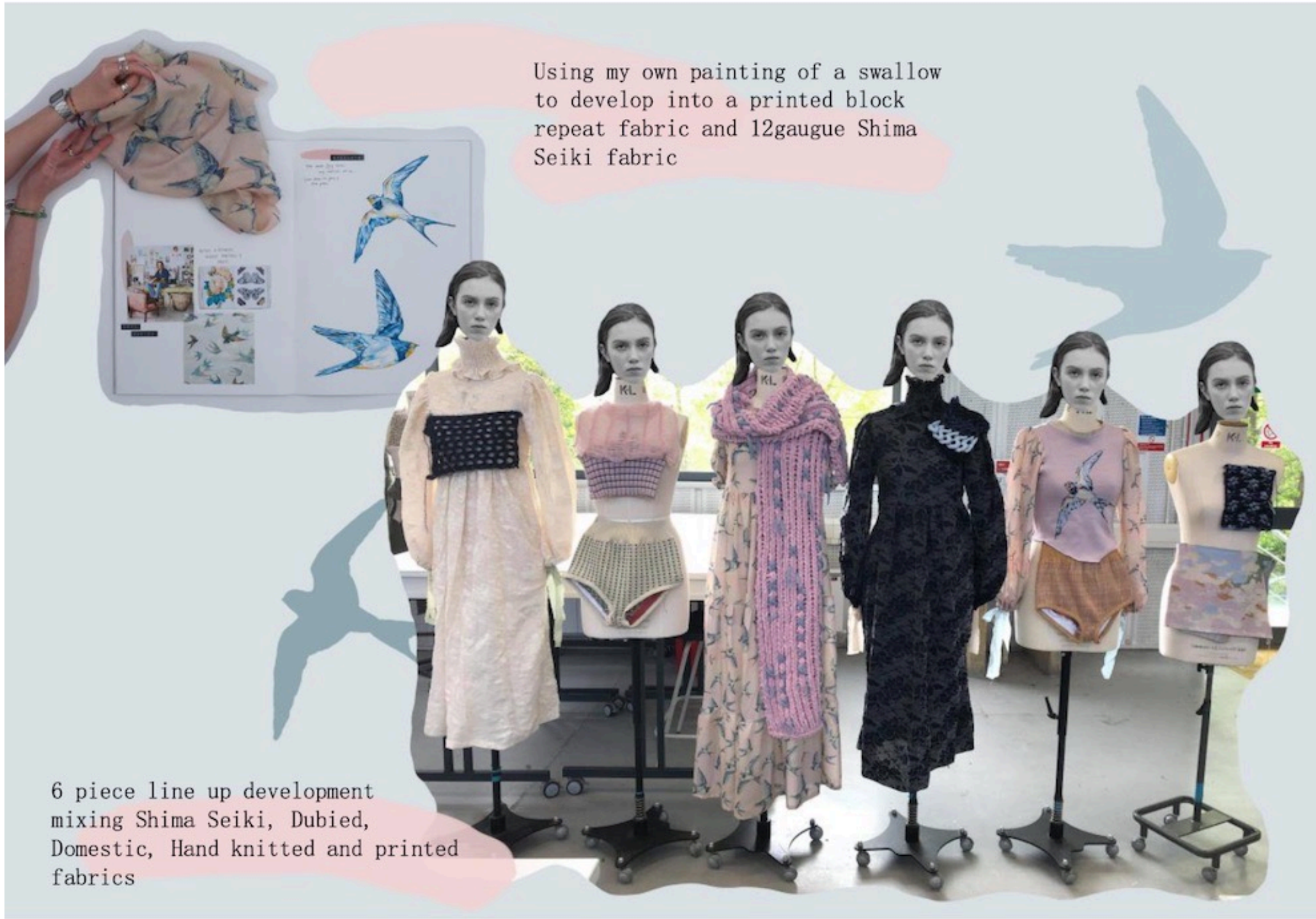
Knitwear for Fashion

Katie Greenham is a womenswear fashion knitwear designer. Through her love of art, nature and colour her fabrics encompass a sense of movement and luxury. Inspired by the way art and music capture emotion, she translates these ideas into textures. By combining fine gauge Shima Seiki fabrics and chunky hand knits, contrasting textures bring delicate excitement. Using her own paintings, Katie develops unique designs which she uses as the base for her knitted textiles alongside printed fabrics.



Using my own painting of a swallow
to develop into a printed block
repeat fabric and 12gaugue Shima
Seiki fabric

6 piece line up development
mixing Shima Seiki, Dubied,
Domestic, Hand knitted and printed
fabrics



Modern Romantics - Moodboard
S/S 2022



Frill neck piece with covered buttons and rouleau loops using 18gauge floral Shima Seiki knitted fabric

Garment development drawings



Pink mohair jumper with scalloped cuffs





18gauge Shima Seiki
knitted dresses using silk and
monofilament



Domestic machine knitted vests
using mohair, cashwool and silk

Jessica Morris

Location: Winchester, UK

UNIVERSITY/COLLEGE:

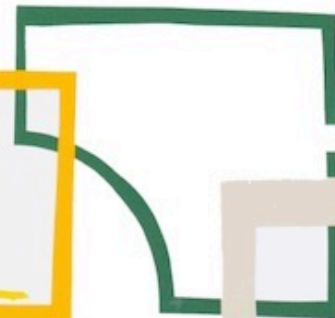
Winchester School of Art

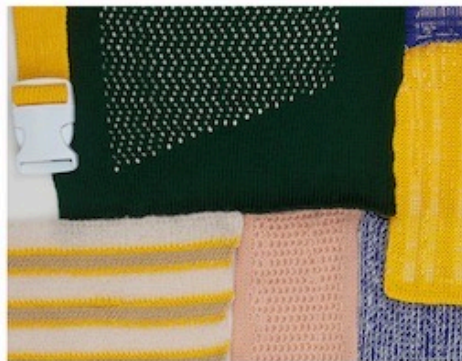
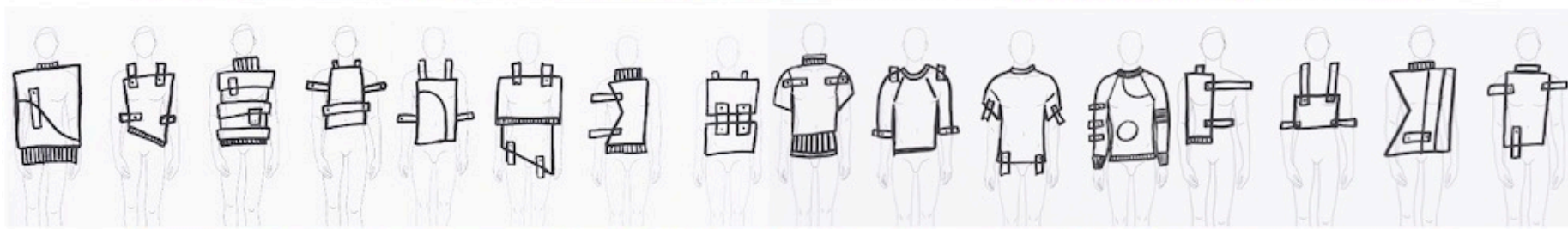
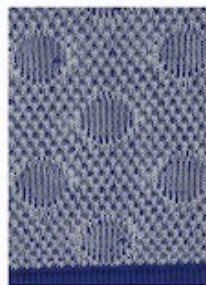
SPECIALISMS:

Knitwear for Fashion

Exploring knitwear and sportswear in menswear through to unisex fashion. Jess Morris studied at Winchester School of Art, creating the six piece final collection 'Athletic Outline'. Using abstract and performance art as the main influence, the collection focuses on modern use of knitwear through knitted mesh, strapping, reflective yarn and quilting to produce an innovative look. As a designer, Jess takes inspiration from traditional sportswear to find new, contemporary ways of using knitwear.











Hannah Steel

Location: Brighton,UK

UNIVERSITY/COLLEGE:

Winchester School of Art

SPECIALISMS:

Woven Textiles

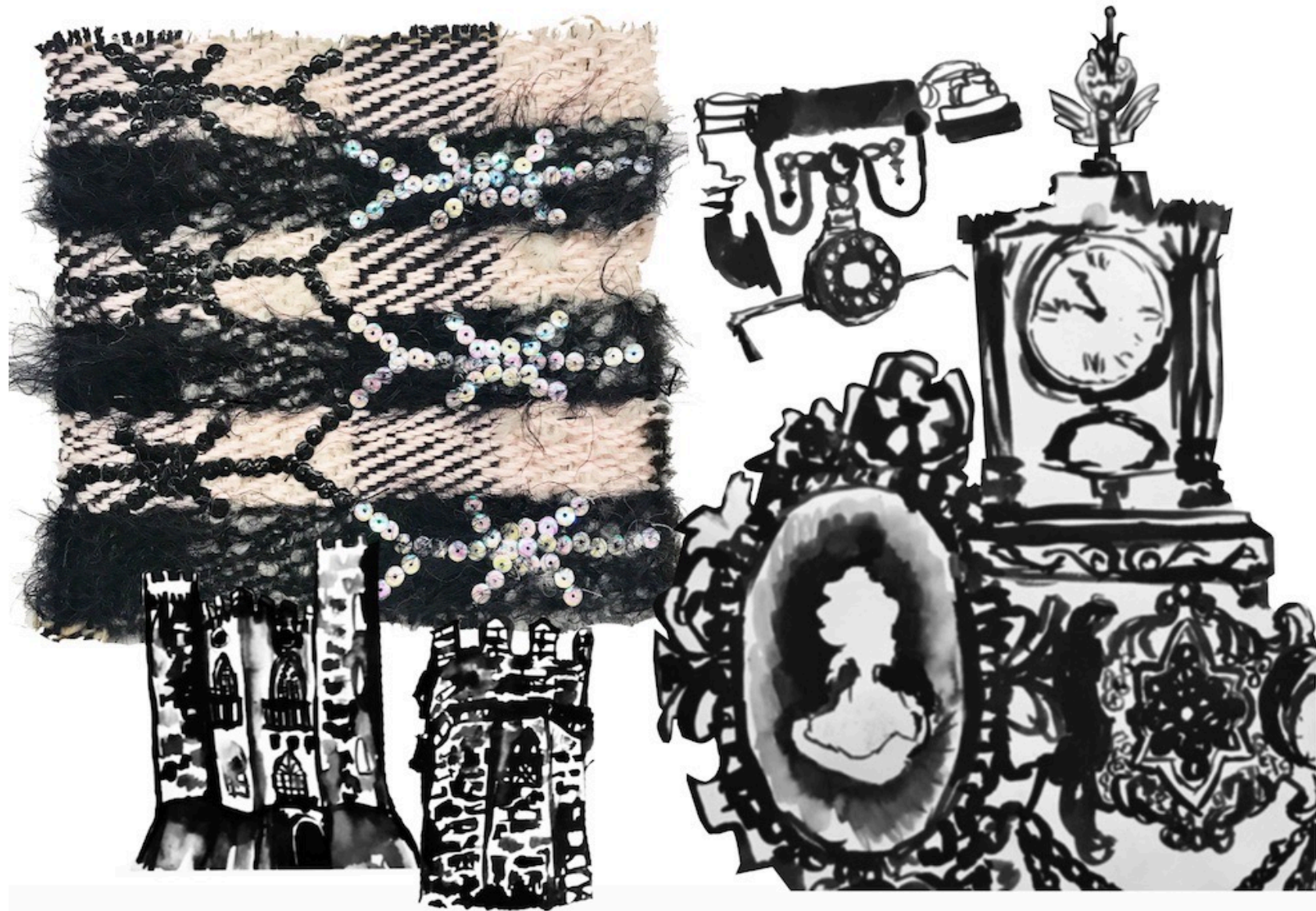
Hannah is a design fanatic specialising in woven textiles. She has a love of every part of the process from the research, drawing and concept curation, to the warp setup and weaving process. Driven by concepts and themes she enjoys pulling in thoughts and research from across a range of areas to create an outcome that is entirely new and unexpected. For Hannah the process doesn't end with the woven material but continues into a tactile three-dimensional product.











Emily Erskine

Location: Brighton & Hove, UK

UNIVERSITY/COLLEGE:

Winchester School of Art

SPECIALISMS:

Printed Textiles

Emily Erskine is a British printed textile designer for fashion & lifestyle. Living by the coast, she is inspired by colour, texture and the juxtaposition between the natural and urban environment. Her work incorporates an illustrative yet playful style, including realistic and abstract designs. Emily uses a variety of techniques including hand-rendered printing, digital skills and embellishment. As she develops as a designer, she will continue to embrace and maximise her unique style.



mummy & me live by the sea... collection

SS/23
mother-
daughter
collection



Atelier Bingo

Stella Kids S920



Fabula



Marlon Barraud



Philip's Red Books Atlas



Primary Image



Reformation

Primary Image



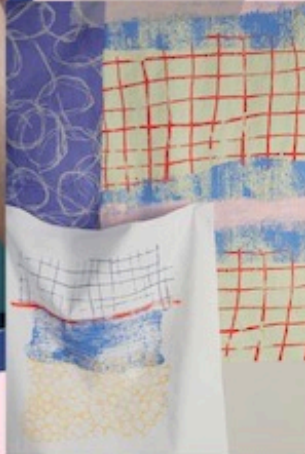
Martnako S920



Emily Erskine







Emily Erskine
final samples &
photoshoot

Georgia Alice Pescud

Location: Winchester, UK

UNIVERSITY/COLLEGE:

Winchester School of Art

SPECIALISMS:

Printed Textiles

Georgia Pescud is a Printed Textile designer who specializes in both digital and hand rendered screen printing techniques to create contemporary and unique printed fabrics for fashion. Inspired by nature and nostalgia, Georgia's work encompasses a colourful yet sophisticated energy, with abstract collage and painting at the forefront of her designs. Experiments with texture, shape and composition allow her designs to creatively adorn a multitude of modern womenswear garments and accessories.





ELIZABETH KELLY



BERNICE B

UNKNOWN

on the sixth
down to the
we all
a bit and
me went
to



GEORGIA PESCU



KUENI MATSUKA

ASHLEY MARY

SIEDE PRETS



OPHELIA PANG



CLIFF TOPS & FLIP FLOPS



ent
gain.
s for
hen daddy one
rock pooling and
of fish.



DESIGN DEVELOPMENT

LOST GARDENS OF MELIGAN



GEORGIA PESCU
CLIFF TOPS & FLIP FLOPS

CORNISH NORTH COAST



TREVOSE HEAD



DIARY - 2009

ON THE FOURTH DAY WE GOT UP
EARLY AND WE DID A BIG ARMY
WALK FROM MATHER LUNY'S BAY
TO PADSTON AND WE WALKED
NINE MILES! WHEN WE GOT
THERE WE HAD A CREAM
TEA!

OBSERVATIONAL
STUDIES
'CLIFF WALKING'

Wavy lines representing the sea.

GEORGIA PESCU

CLIFF TOPS & FLIP FLOPS



DIGITAL & SCREEN PRINTED SAMPLES



GEORGIA PESCU
CLIFF TOPS & FLIP FLOPS

WINCHESTER SCHOOL OF ART
THANK YOU

WSAbafashion.com
@wsa.ba.fashion