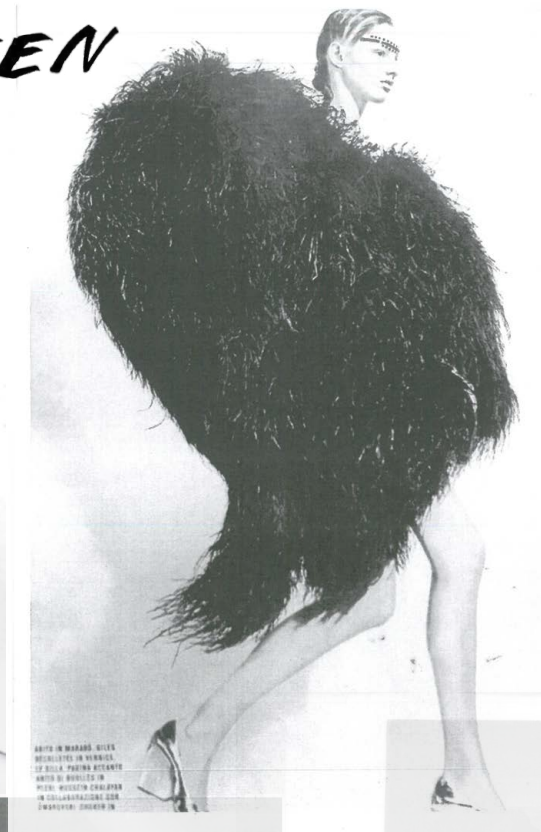
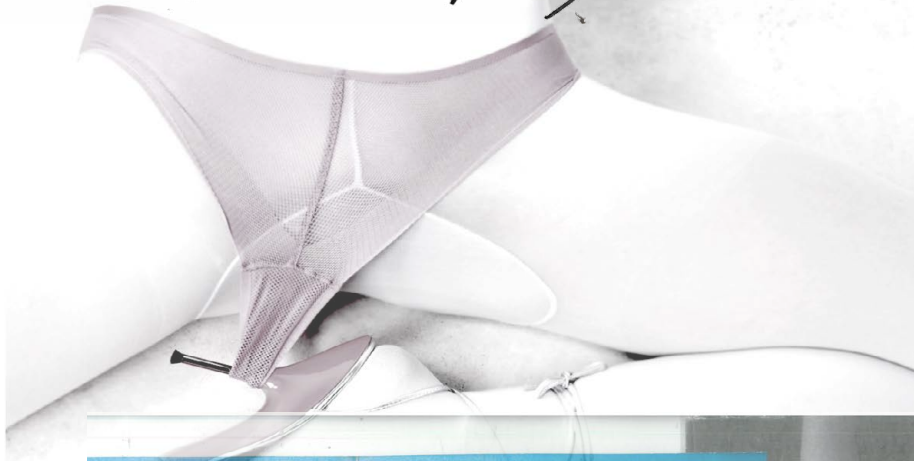


Isabella Brien

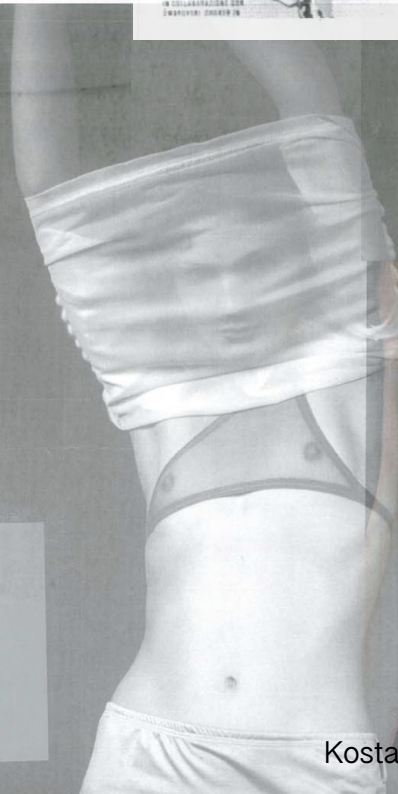


ESSENCE OF THE UNSEEN

This collection is my interpretation of modern glamour, creating a powerful contrast between the sensual and contemporary.



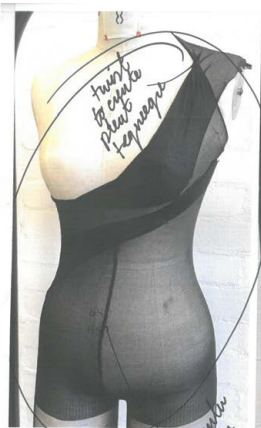
Layers of transparent fabric



sheen
lights adding
dimension to the
body



Kostas Murkudis



twist to create pleats & ruffles



play with multiple collars and transparencies



neutral tones



multiple layers (see first layer)



Elegant silhouette



spiky base inspired by (yarn?)

Deeply originality to add Volume

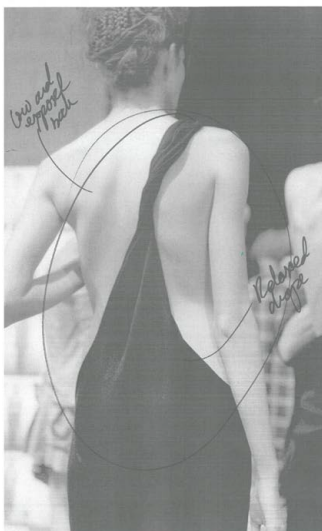


Mimic the different tones of opaqueness

Aim to layer sheer fabric, whilst still exposing elements of the body and add flesh tones.



Use skin tones + black



Use and support of flesh

Radical drapes



mixed medium



slaying the body

asymmetrical silhouette



have it go over the soles



create hood



longly

imprudent to the



use of sheer fabric as a long feature



lower strap and make the thinner



drift for

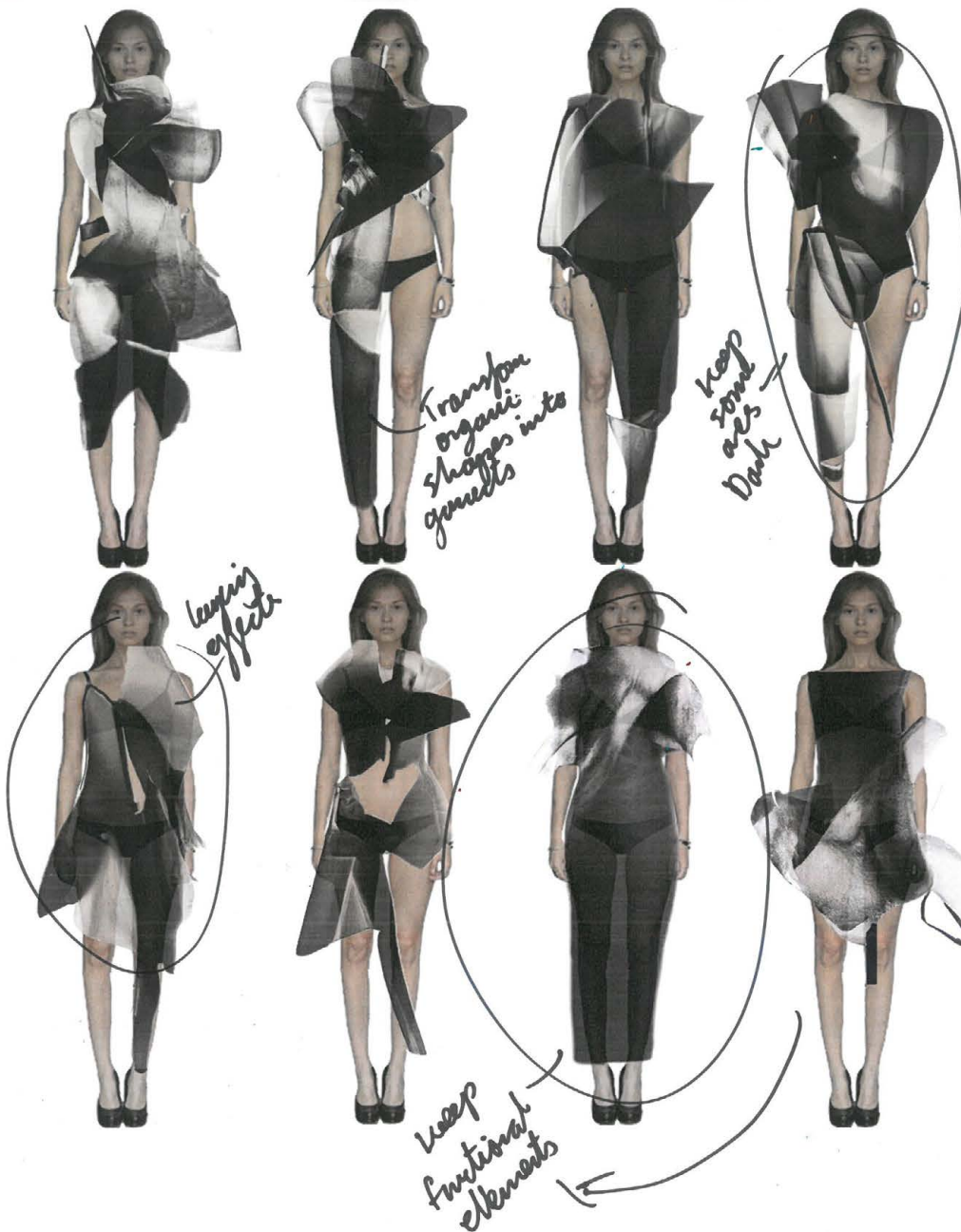
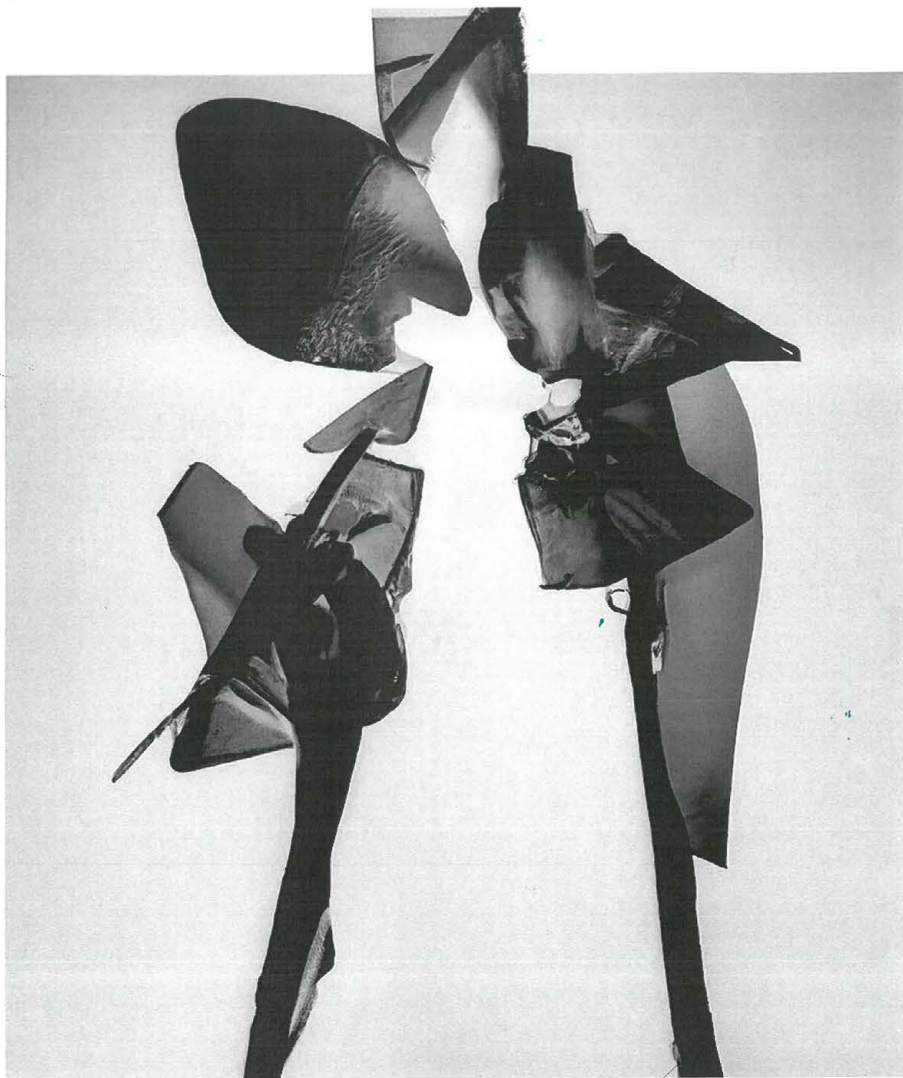
longly draped over

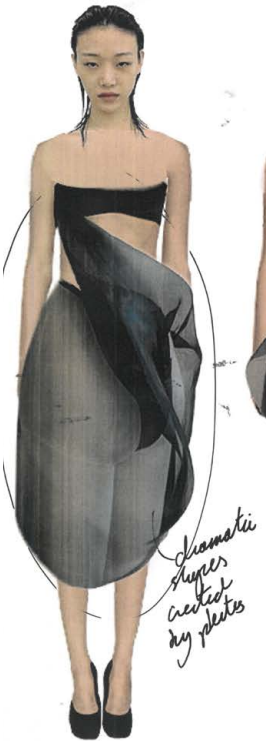
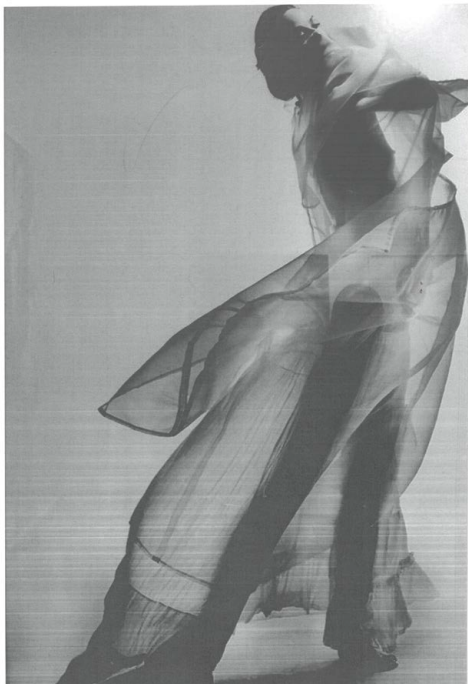


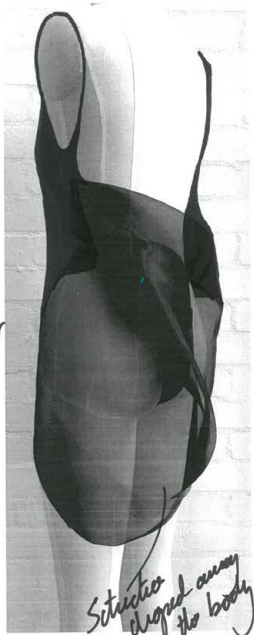
drift pink

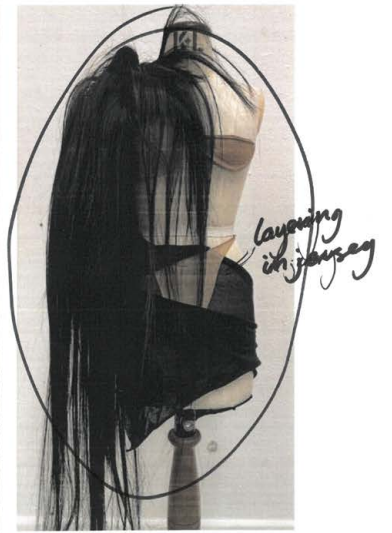
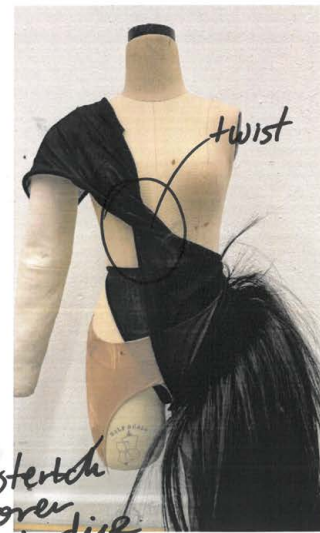
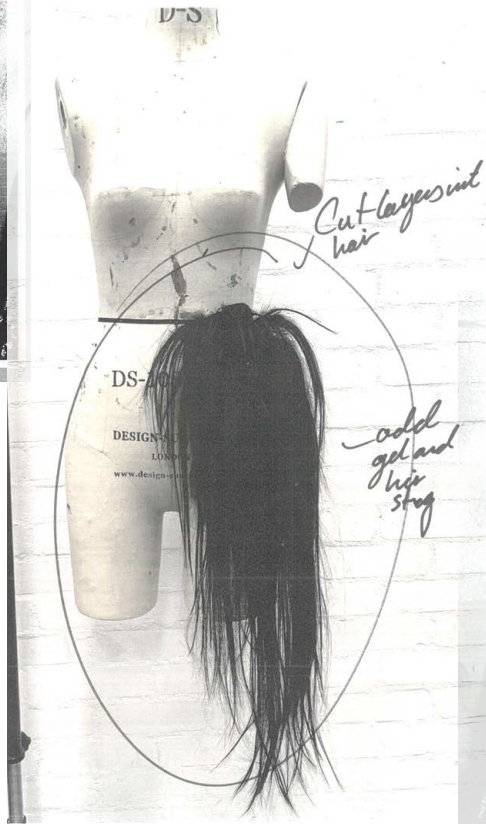
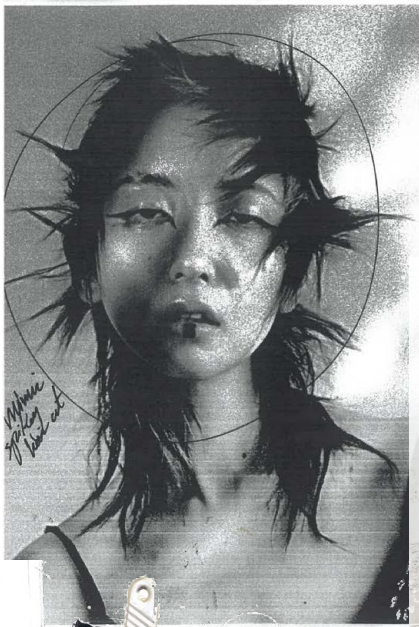


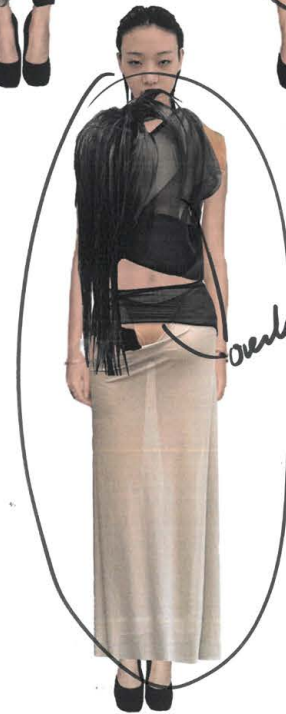
chiffon & jersey











sculpted body



LINE UP

LOOK 1



LOOK 2



LOOK 3



LOOK 4



LOOK 5



LOOK 6







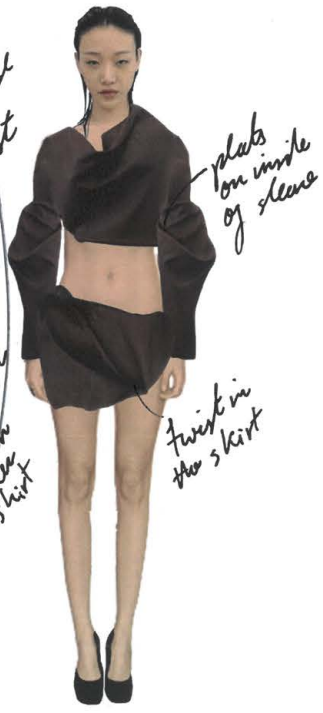
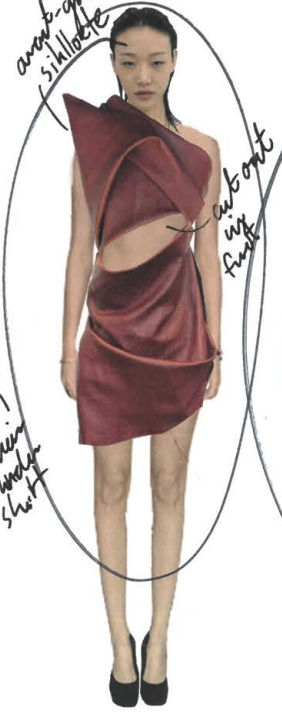


OBSCURA

Obscura carries elements of Essence of the Unseen, this bieng dramatic structures and silhouettes. This Fall/Winter collection explores sculptural design through the visual textures of leather and hair.

Christian Dior AW 2006





LINE UP

LOOK 1



LOOK 2



LOOK 3



LOOK 4



LOOK 5



LOOK 6





HERB RITTS FOR
VERSACE



PALACE DE TOKYO



MARTHA GRAHAM



ISSEY MIYAKE

WARPED

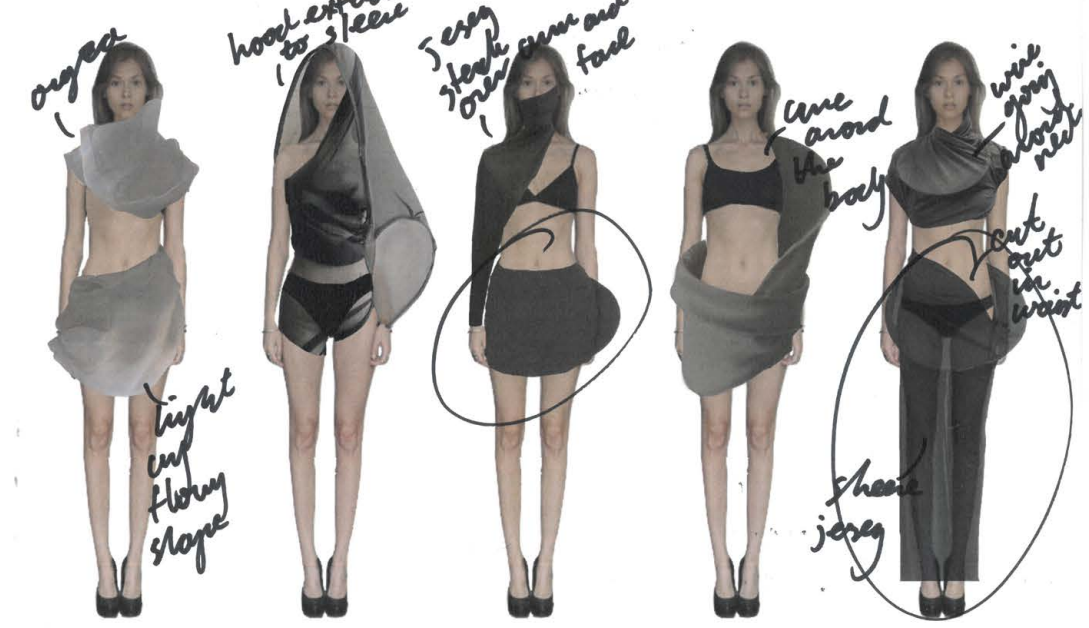
This collection explores movement and migration through my Spanish, American heritage and dance, intertwining organic shapes with structured forms. Inspired by the fluidity of movement and celebrating the beauty of transformation in both fashion and identity. Drawing from the pioneering spirit of dancer Martha Graham, the work embodies her influence in exploring the depths of human expression through movement.



TINA LECHNER







TINE UP



look 1



look 2



look 3



look 4



look 5



look 6



look 7



look 8