

DINARA ATAYEVA

MA FASHION DESIGN

Childhood Memories

GRADUATE PORTFOLIO | PRE-FALL 26

INTRODUCTION.

Fragmented Nostalgia

This collection, Fragmented Nostalgia, begins with a personal lens rooted in memories of childhood uniforms, rituals, and the rigid structures that once shaped identity. Drawing inspiration from Soviet-era schoolwear and its disciplined aesthetic, the concept explores how garments can both confine and empower.

These early visual codes—pleated skirts, structured collars, heavy fabrics—become metaphors for control, obedience, and societal expectation. Yet through a surrealist reinterpretation, they are deconstructed and transformed. Fragmented silhouettes, softened structures, and reimagined proportions allow space for fluidity, play, and reinvention.

Formae uses this dialogue between memory and modernity to reclaim the narrative of uniformity. Rather than suppressing individuality, this collection reframes the uniform as a vessel of empowerment—evoking nostalgia not as a longing for the past, but as a tool to reimagine the future.

The result is a tactile study in contrast: strict vs soft, order vs freedom, past vs possible. Formae invites the wearer to step into a story that feels both familiar and futuristic—one where the female form exists without constraint, and nostalgia becomes a source of strength.



the details



school uniform design



organic shape



CORE COLOUR STORY.




Palette research & Emotional anchors

This page was developed through an analysis of WGSN's A/W 26/27 Colour Forecast, focusing on the division between seasonal, annual, and long-term core colours. By understanding how each category functions—seasonal for short-term impact, annual for cross-season versatility, and long-term for lasting value. I was able to align my palette with both current trends and enduring relevance.

My core colours—Midnight Blue, Chalk Cream, and Charcoal Grey—are positioned as long-term tones, offering structure and sophistication that transcend seasonal shifts. Additional muted tones like **Putty Taupe**, **Steel Blue**, and **Dust Sage** reflect WGSN's emphasis on restorative pastels and off-kilter combinations, supporting the theme of “fragmented nostalgia” through a futuristic lens.

This approach ensures the collection remains commercially relevant while conceptually rich, blending emotional memory with a forward-facing aesthetic.

KEY COLOURS:

A/W 26/27		A/W 26/27		A/W 26/27	
					
@marbera_		@crosbystudios		@etudesstudio	
117-77-06	14-4112 TCX	030-37-02	18-0403 TCX	033-54-20	17-1129 TCX
115-52-06	17-4018 TCX	000-64-00	17-5104 TCX	037-61-13	16-0726 TCX
118-26-19	19-4029 TCX	115-38-04	19-4215 TCX	034-75-11	15-1217 TCX
				033-82-11	12-0304 TCX

Moody blues come to the fore for the autumn season and the dusty mid-tone of Steel Blue (115-52-06) is added to the palette as a complementary colour to Blue Aura (117-77-06) and Classic Navy (118-26-19).

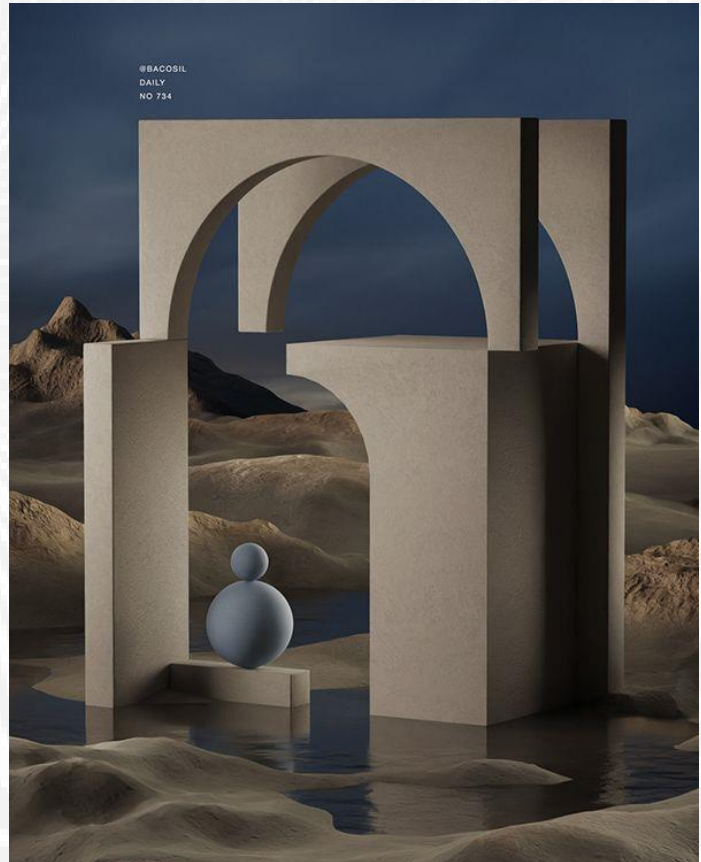
There is no change to greys this season, as the S/S 26 updates have annual and long-term appeal, showing the importance of greys with longevity and versatility.

Neutrals continue to drive transeasonality, annual shade Dusted Ochre (033-54-20) returns with long-term shades Classic Beige (034-75-11) and Chalk (034-84-05). Olive Stone (037-61-13) also repeats, emphasising the significance of sanded and utilitarian shades.

Midnight pleated texture



Surreal memory distortion



These 12 colours will drive seasonal newness for A/W 26/27. This palette includes restorative pastels, digital brights and rich, earthy tones. The seasonal key colours are Wax Paper, Fresh Purple, Cocoa Powder and Green Glow. Olive Stone and Cherry Lacquer carry over from S/S 26 into the A/W season for increased longevity.

SEASONAL COLOUR:

Cocoa Powder	Red Earth	Golden Hour	Olive Stone	Wax Paper	Green Glow
Soft Grass	Bright Emerald	Steel Blue	Light Lavender	Fresh Purple	Cherry Lacquer

ANNUAL COLOUR:

Robust Red	Love Red	Future Grey	Chocolate Sauce	Dusted Ochre	Primal Green	Transformative Teal
Tranquil Blue	Blue Aura	Classic Navy	Electric Indigo	Electric Fuchsia	Nostalgic Pink	Pink Frost

S/S 26 and A/W 26/27

These 14 annual colours will remain relevant for both S/S 26 and A/W 26/27. This selection includes three of our five Key Colours from S/S 26: Colour of the Year 2026 Transformative Teal, Electric Fuchsia and Blue Aura.

LONG TERM COLOUR:

Cherry Juice	Crimson	Sepia	Italian Clay	Ground Coffee	Robust Grey	Chalk
Saturated Grey	Optic White	Cerulean Grey	Digital Mist	Dark Olive	Sea Kelp	Black

S/S 26 and A/W 26/27

These 14 annual colours will remain relevant for both S/S 26 and A/W 26/27. This selection includes three of our five Key Colours from S/S 26: Colour of the Year 2026 Transformative Teal, Electric Fuchsia and Blue Aura.

These colour systems from WGSN A/W 26/27 informed the long-term and annual tones in Formae's palette—ensuring conceptual depth, future relevance, and luxury appeal.

Architectural symbolism

Silhouette Development.

Past Discipline, Future Emotion



ROBES A BRETE



At this stage, I began sketching to explore the relationship between past discipline and future emotion. By combining elements from Soviet school uniforms and 1960s silhouettes, I started to understand how structure, uniformity, and graphic shaping could work together. These early sketches helped me experiment with proportion, layering, and seam placement laying the foundation for a silhouette that feels both nostalgic and forward-thinking. This was a way to test visual balance before moving into more architectural refinement.

LINE UP.

Echoes of the Past.



This final line-up reflects a journey through memory from childhood discipline to futuristic reinterpretation.

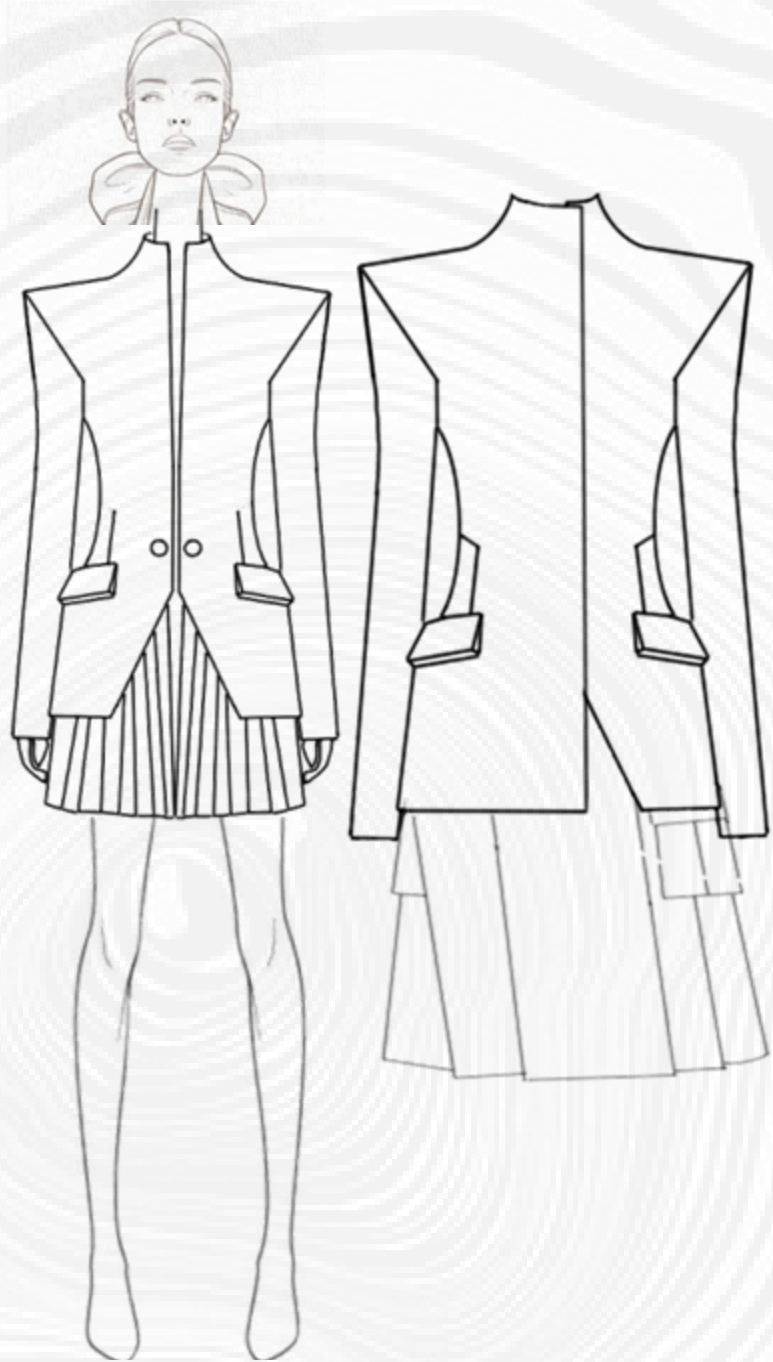
Each look carries echoes of the past: **structured silhouettes, pleats, pinafores, and tailored coats, all reworked using modern construction, digital layering, and emotionally charged detailing.**

Originally developed through cut-out collage and photocopy manipulation, the silhouettes evolved from historical references into fragmented, expressive forms grounded in personal nostalgia but elevated through futuristic fabrics and clean tailoring.

LOOK 2 - Design Evolution.



Tailoring :



Initial block silhouette

Softened shape trial

Proportion adjustment

Pre-final shape

Detail refinement



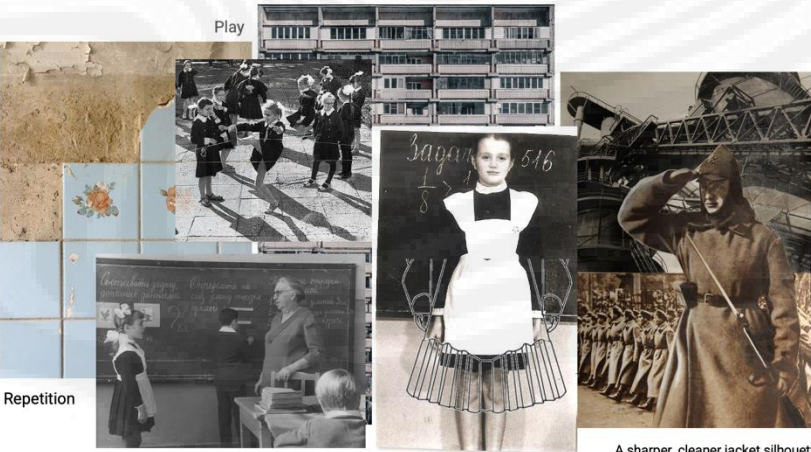
REFLECTING ON CHILDHOOD.



This collection begins with memory—where play, discipline, and routine shaped identity. These fragments form the emotional framework for Formae's silhouettes.



Inspired by school uniform tailoring — pleated skirt details and structured blazer echo institutional design with a twist of feminine innocence.



Play

Repetition

Innocence

Control

A sharper, cleaner jacket silhouette representing control and discipline.

I was initially drawn to strong, futuristic silhouettes , sharp angles, sculpted volume, and tailoring inspired by both surrealist forms and uniform codes. I explored these on the stand, letting the structure guide me.

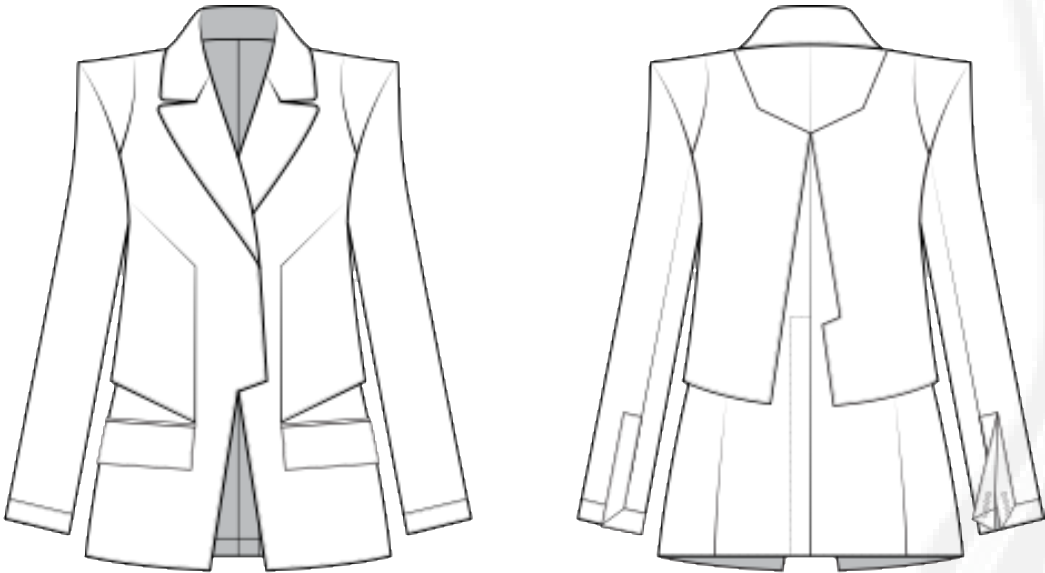
As I began working in toile and adjusting on the body, the collar became a turning point. Shifting and exaggerating it helped me move away from purely technical tailoring and toward something more personal a softer rebellion.

This was the moment Look 2 began to feel truly Formae balancing controlled construction with subtle distortion, memory, and new shape.

FINAL DESIGN.

Reimagined uniform with Architectural tailoring.

FRONT



Structured blazer design with panelled seams and oversized pockets. Inspired by Soviet uniform tailoring.

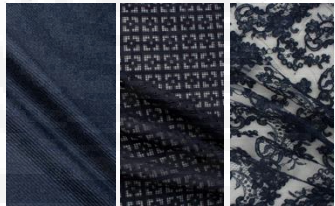
Pre-Fall 2026



This look reinterprets a school blazer with futuristic sharpness, combining nostalgic pleats with architectural tailoring.



Wool blend, pleated silk blend, and contrast lace



Navy Blue Wool & Silk Blend
Navy Blue 'Windowpane' Laser Cut Poly
Midnight Blue Heavy Corded Cotton Lace

Contrast of wool tailoring and pleated silk blend. Soft pleats and sharp edges mirror the memory vs control theme.

Laser-cut sock boots with nostalgic schoolwear references



Testing fabric manipulation and layering placement using calico. Focus on shaping the hem and apron-inspired structure.

Toile Development Process – Pleated Dress Silhouette