



SUBLIMINALS

SUBLIMINALS is a digital and accessories driven project, dedicated to exploring and unearthing the fearless style of queer women throughout history. This project was personally driven, I wanted to highlight the lesbians in my life who are not seen or appreciated for their courage in style. Bringing historical depth to the butch & masc style through my fashion film. As a feminine-presenting lesbian myself, I want more alternative queer fashion history to have the spotlight.

Starting my research in the 1800s and exploring decades' worth of style until the early 2000s, I have curated a line-up of garments that represent these eras of queer women, placing them in a digital fashion film inspired by gay clubs, which aims to be educational and inspirational. Lastly, I handcrafted leather bags to pay homage to the lesbian accessories, with the bags expressing that intimate, hidden love.

Within my wider range of research, I thoroughly explored underground lesbian-exclusive clubs, Le Monocle in 1920s-1930s Paris to 1950s London, with its Gateways club. This led me to a newfound appreciation for the 1920s (lesbian) style, as well as a political and emotional tie with queer dress-sense. This led me to the meaning behind the project's title, Subliminals, deriving from the small, hidden signals the queer community give each other through their style, an 'if you know you know'. A way to stay protected and unidentified.

LULU MUNN

"LULU" IS WOMAN DRESSED LIKE MAN ON EXTREME LEFT!

VIEW OF NEW LESBIAN BAR "MONOCLE" AT MONTIPARNASSE

38 rue de l'Orne PARIS 17
Droit de reproduction réservé
Mention obligatoire

SERVICE D'ILLUSTRATION
DE PRESSE
Copyright by
PAUL BALASSA

THE GIRL IN MANNISH ATTIRE IN CENTRE OF PHOTO IS Mlle. MUNN

PARIS - RESTAURANTS
Monocle, Le

AMERICAN WEEKLY
DEPARTMENT
STREET



GATEWAYS, LONDON



LE MONOCLE, PARIS



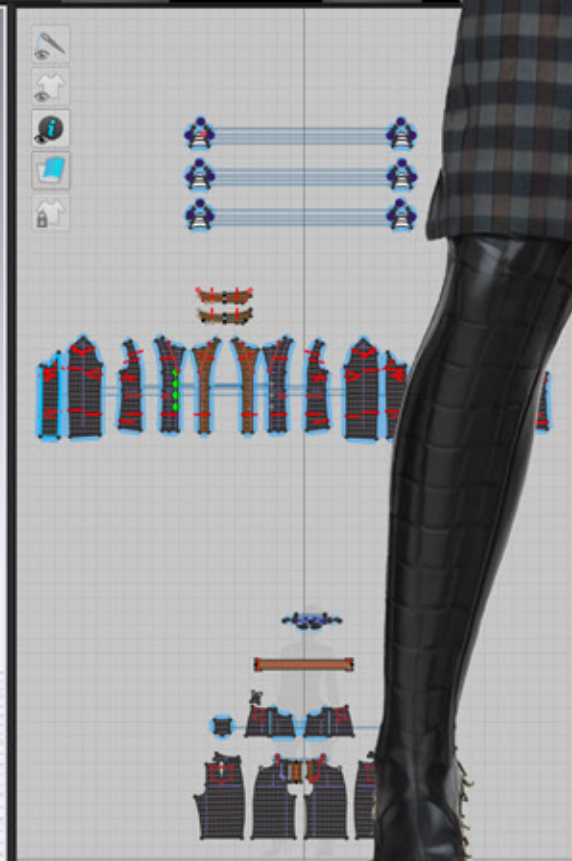
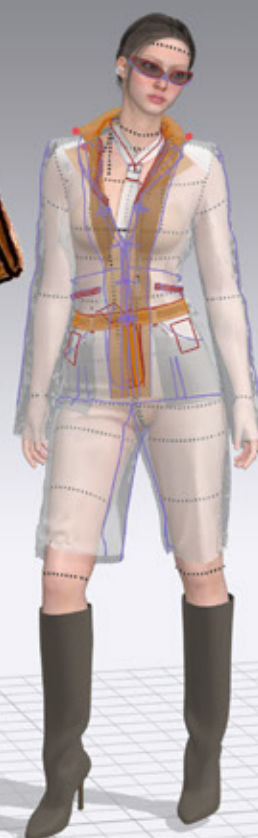
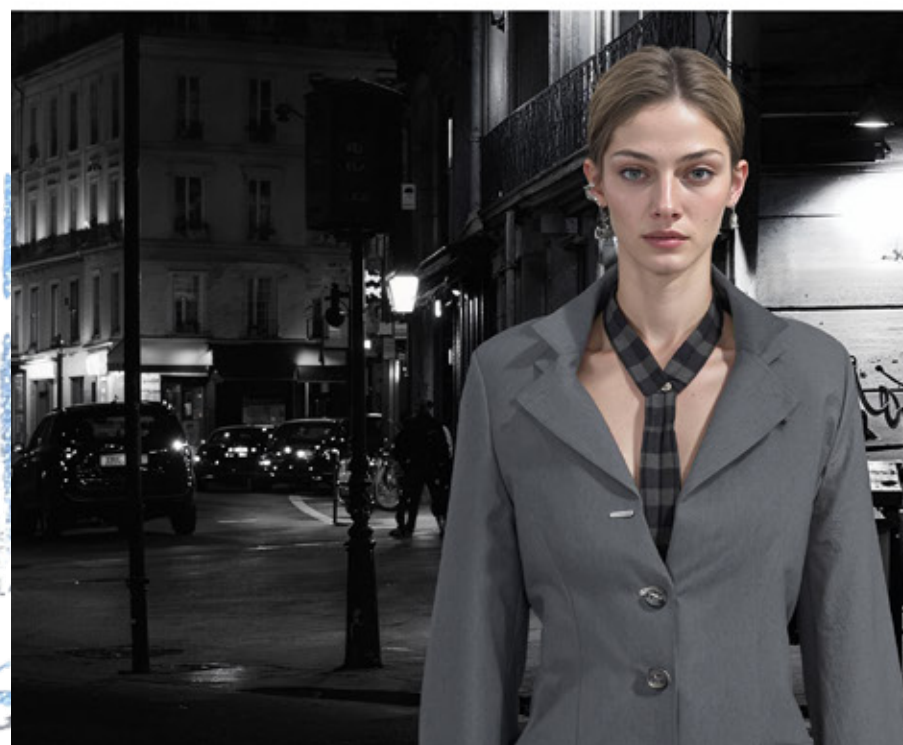
FINAL CLO3D LINEUP

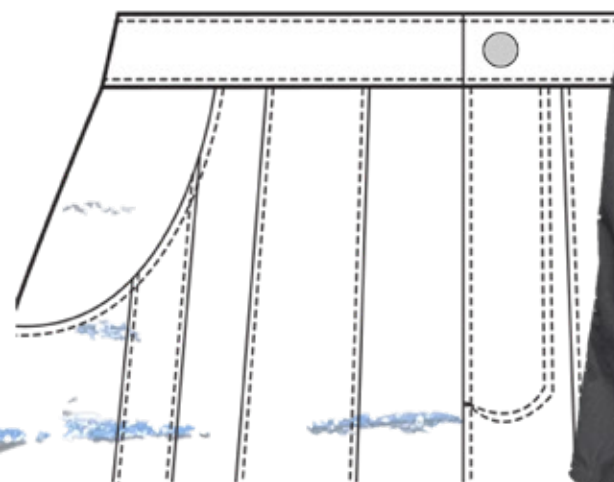
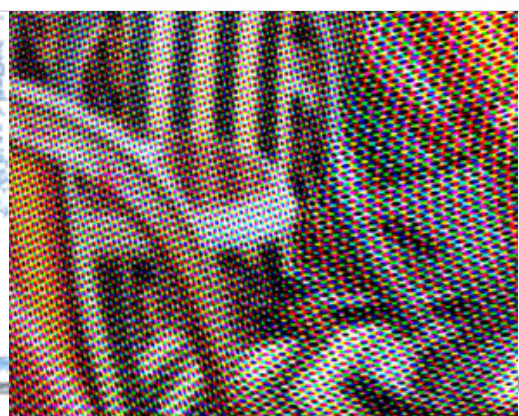
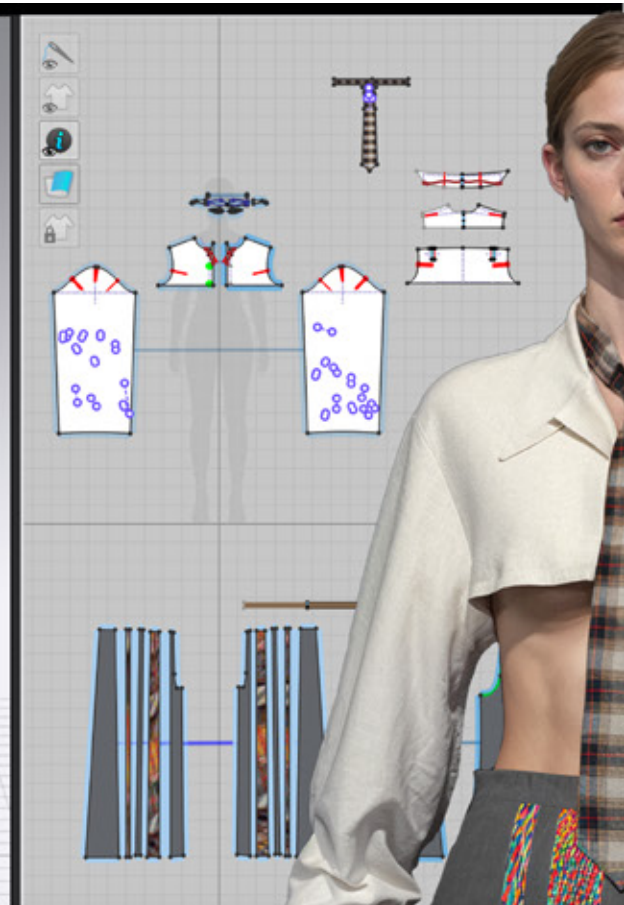
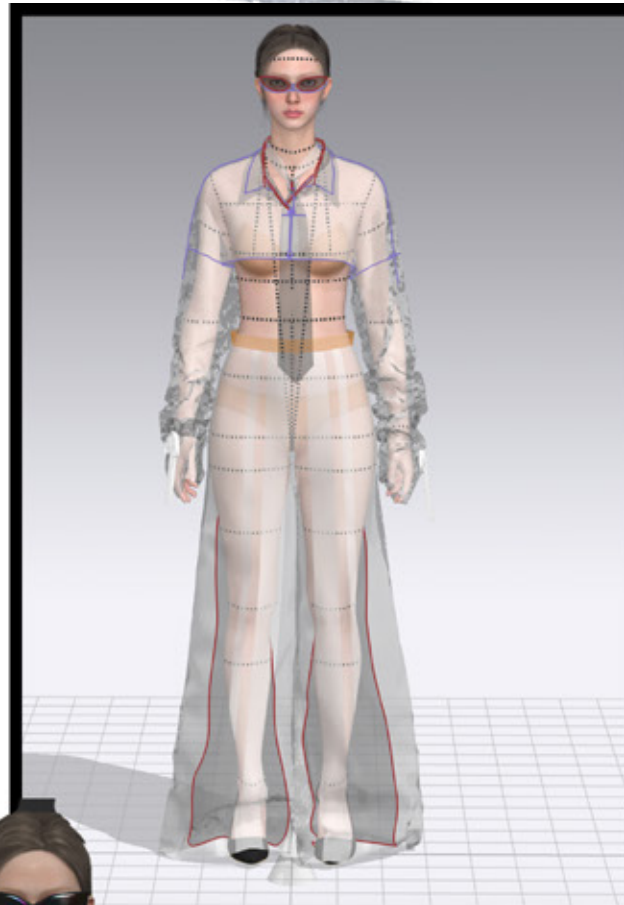
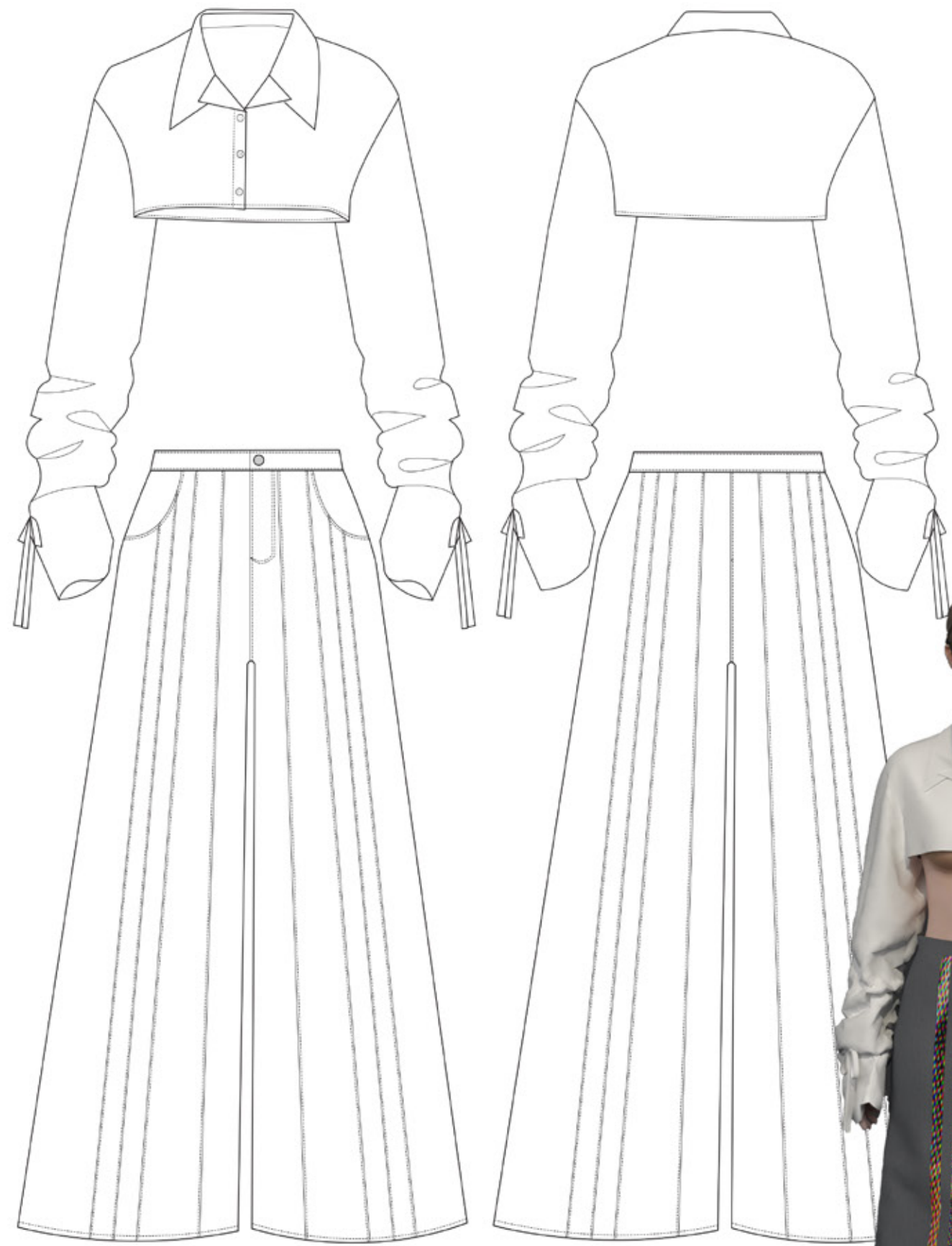


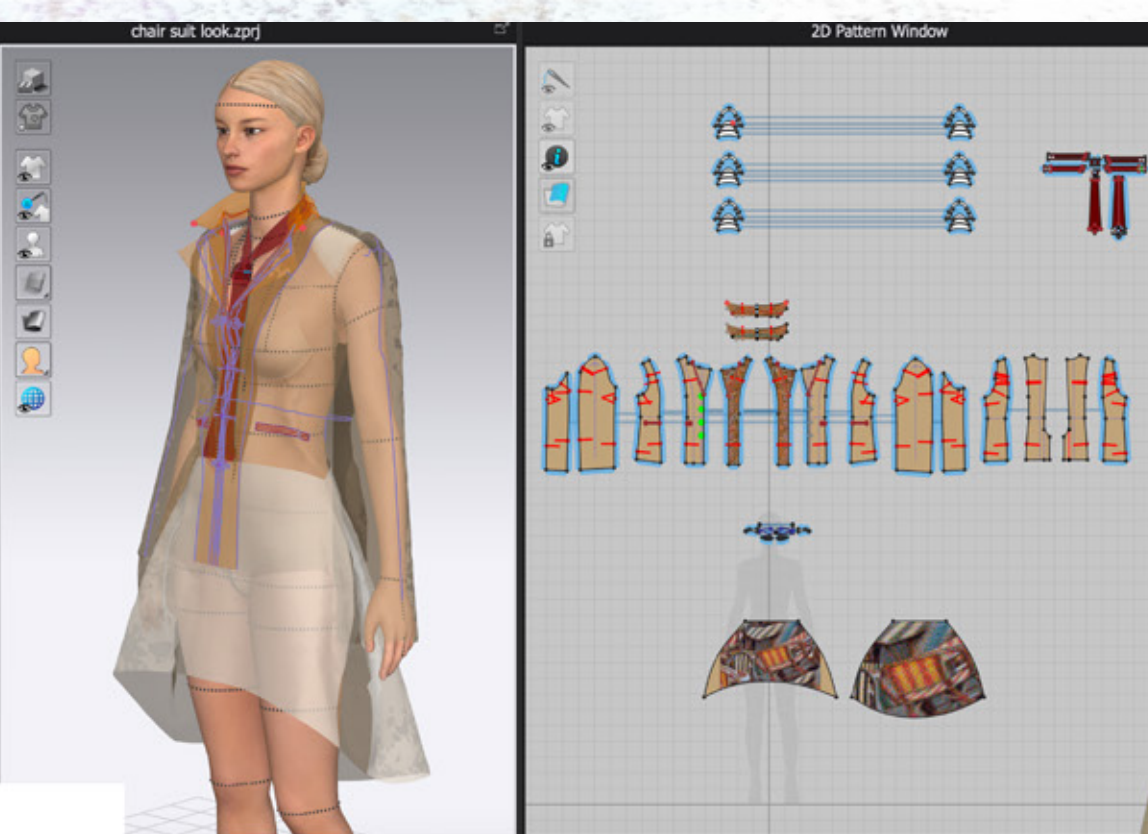
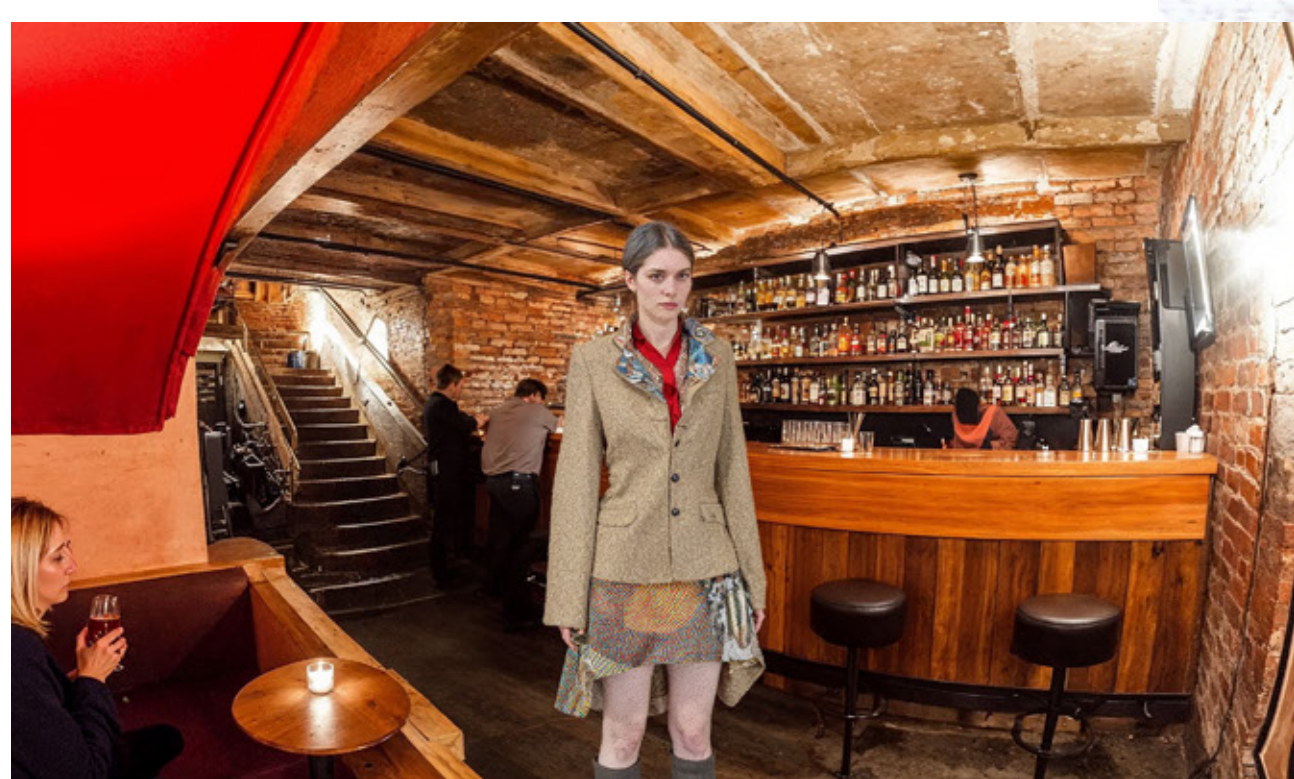


BEFORE & AFTER

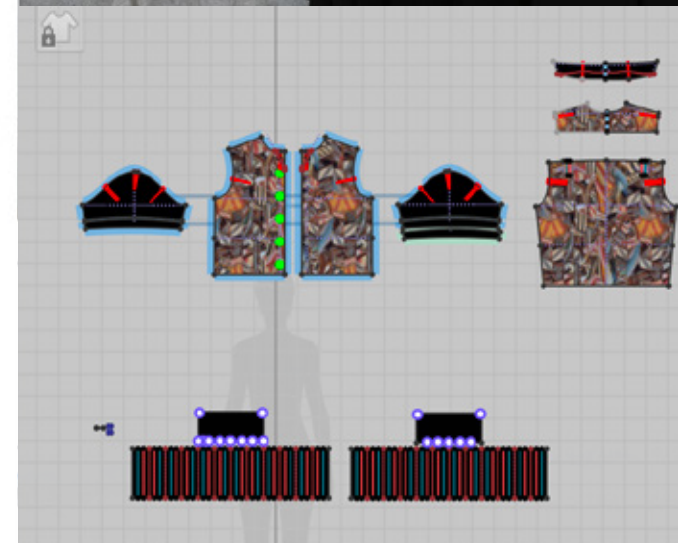
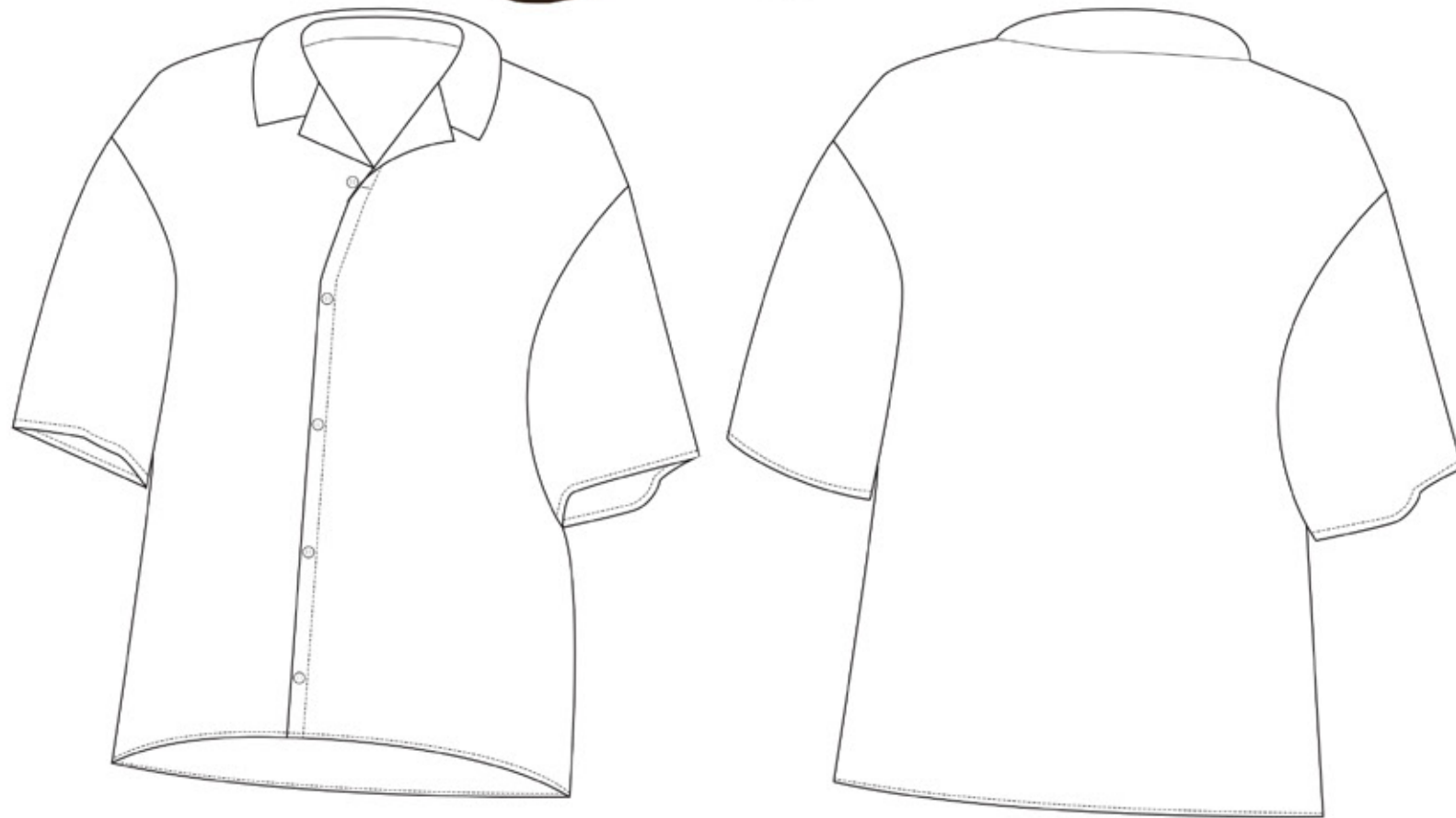
Producing my garments and accessories in CLO3D, I then render the look and take it over to Magnific to upscale my image. I use AI consciously, only to assist me in taking my own 3D work to the next level, not creating the work for me. The pose, garments, avatars, print, accessories and background is all developed on CLO3D or photoshop.



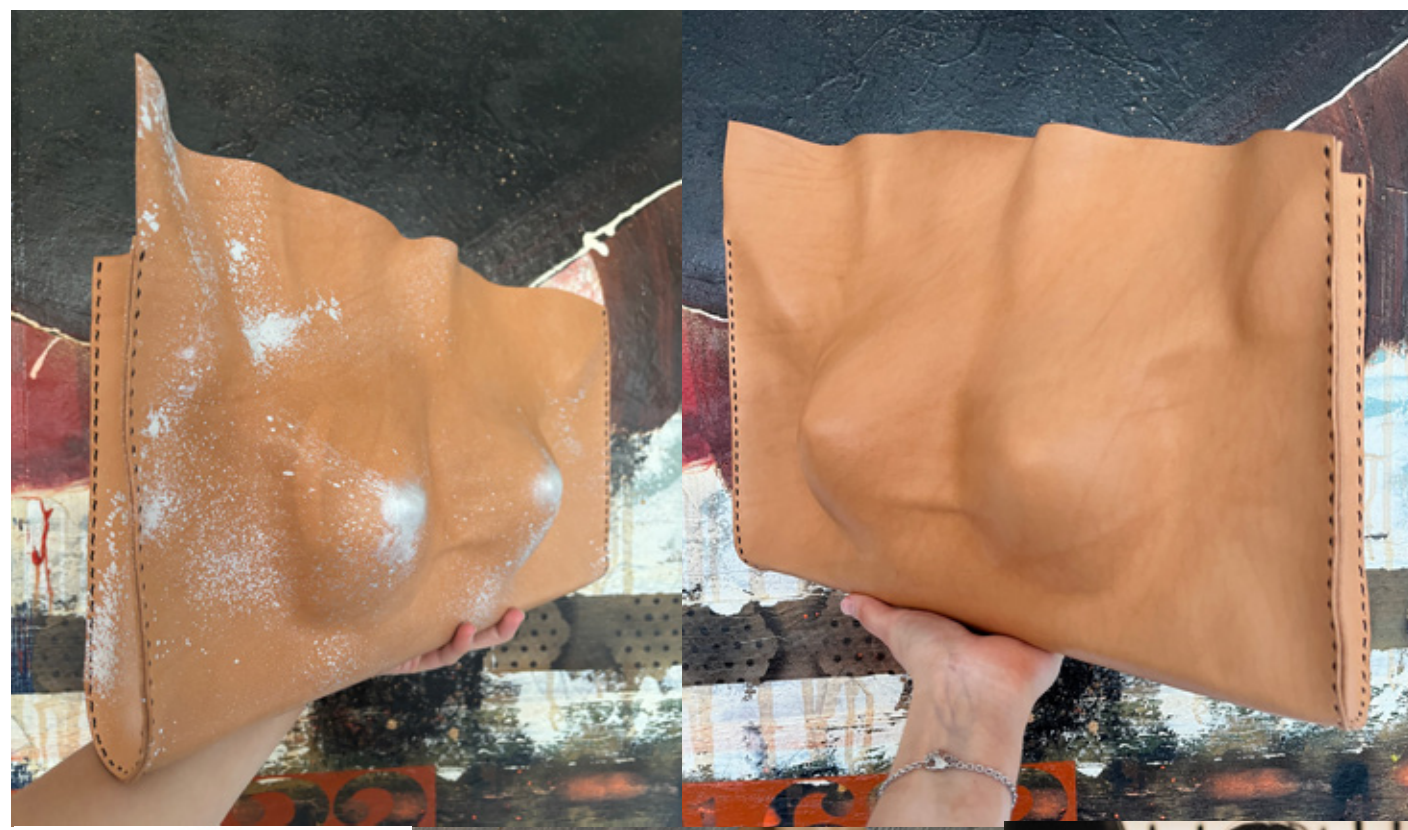




Ending my digital collection with a look inspired by modern baggy shirts with a reoccurring print in my collection. Inspired by Parisian pavement seating at cafes. This Bistro European tradition led me to thinking about what the lesbians at Le monacle might get up to in the day with each other, sitting on metal fold-out chairs and chatting while holding hands under the table.



In development with the physical accessory side of my project, I created CLO3D bags to then be made. This method really helped me get a good idea on the bag structure and shape, I also created cardboard patterns before creation. They are wet-moulded 1 mm vegetable tanned leather bags with a wax thread black stitching.



FURTHER DIGITAL DEVELOPMENT



FURTHER DIGITAL DEVELOPMENT

