



# Tamsen Mellor-Gardner

Student Number - 22020077

Fashion Design

AD604 Final Collection











Sustainable  
Confident



18-30  
Natural



Organic  
Relaxed





# Athleisure



The Hemp Temple  
\$39-\$139  
West Australia

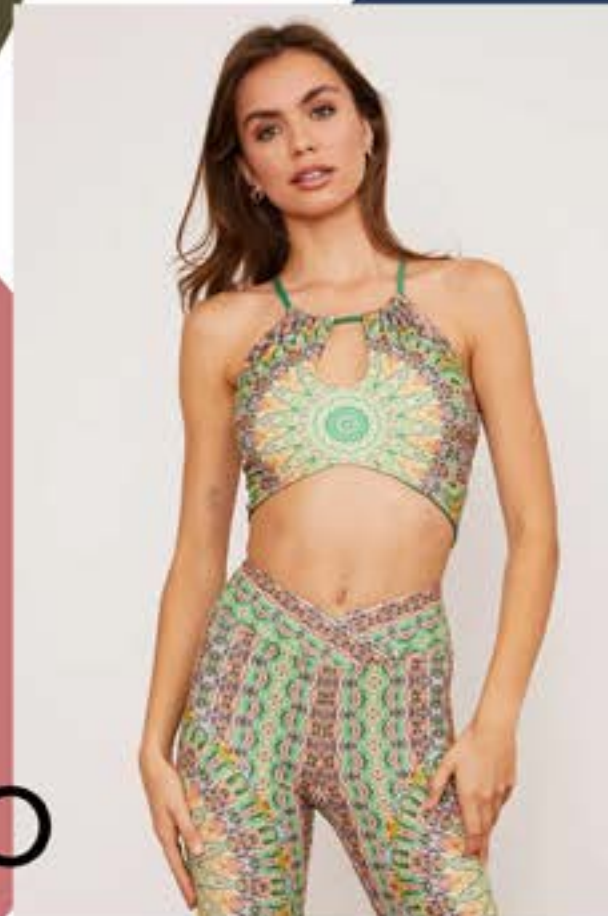


# Botanicals

Live the Process  
\$80-\$280  
New York, USA



Indigo Luna  
\$11-\$139  
Torquay, Australia



Wolven  
£33-£111  
Los Angeles, USA

# Naturally Derived Colour

# Indigo













# The Dye Garden



The Dye Garden started in October 2020, the first plant was Madder as I had bought them in root form. The next to be planted was Woad and Calendula. In Spring 2021, the next batch of seeds were planted including Indigo, Chamomile, Alkanet and Soapwort.

With the dye garden, I aim to create a rainbow of colour. The Woad and Indigo will create blue, Chamomile and Calendula create yellow, and Madder creates a range of reds and pinks.


I will then be able to alter the colours produced due to the fabric, strengths of dye and the Ph levels.











The final dyes I decided on was Indigo and Logwood. I wanted to achieve a light blue colour with the indigo so when creating the vat, I used enough Indigo, Iron and Lime for 7L of water. I doubled the amount of water to make a paler colour. I decided to use Logwood as it was able to change colour depending on the Ph. It started by creating a purple on the mordanted fabric but by adding lemon juice, an orange/yellow colour was created.





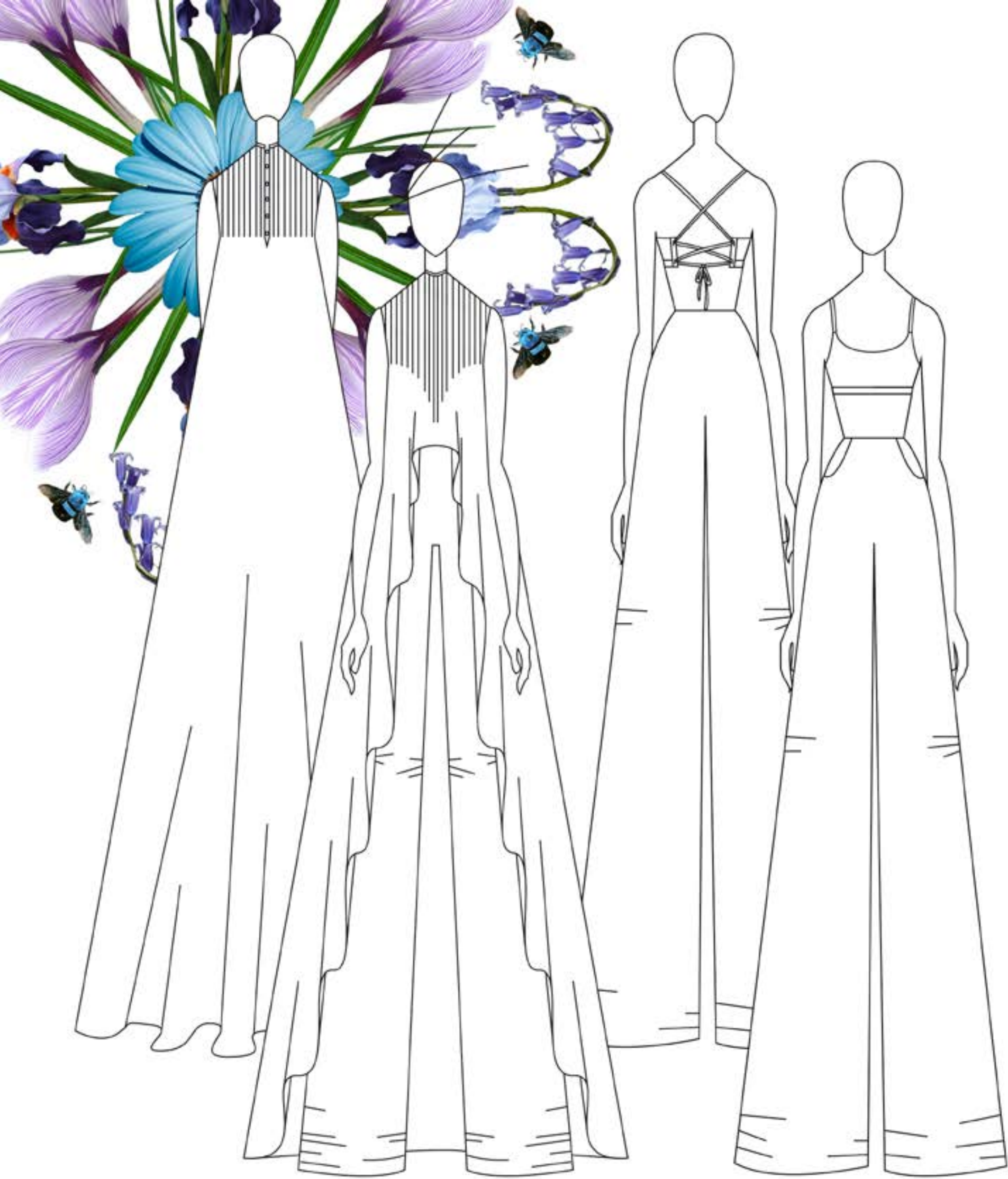


# Look 1

## Dyeing

L1.1- Long Top  
- Undyed.  
L1.2- Crop Top  
- Logwood Dyed.  
L1.3- Trousers  
- Logwood dyes then  
submerged in an acidic  
substance.

Garment	Fabric	
L1.1 - Long Top	Sateen Sheeting Percale -Organic Textile Company	
L1.2 - Crop Top	Jersey Mix, Bamboo and Organic Cotton -Organic Textile Company	
L1.3 - Trousers	Sateen Sheeting Percale -Organic Textile Company	









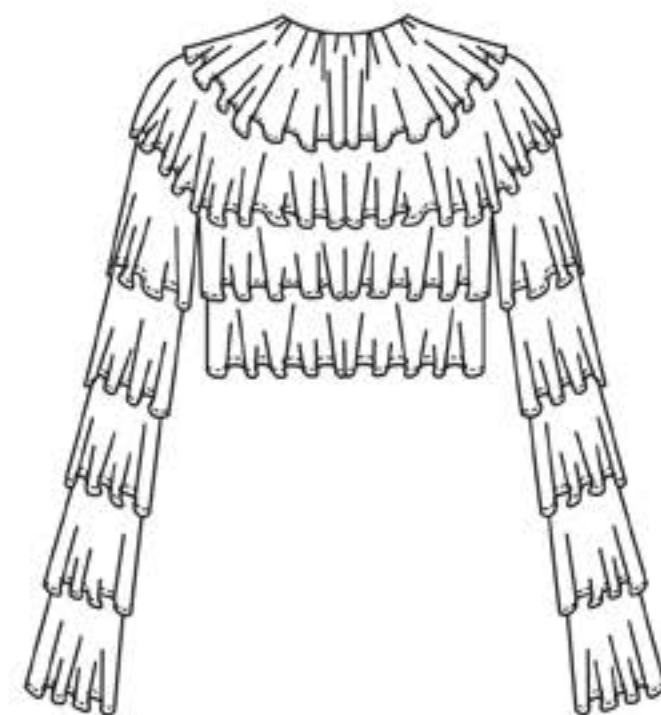
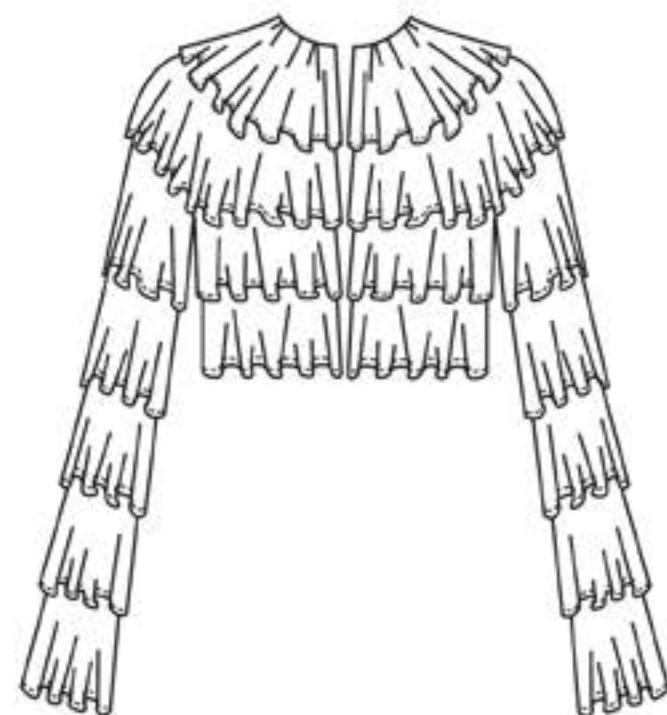
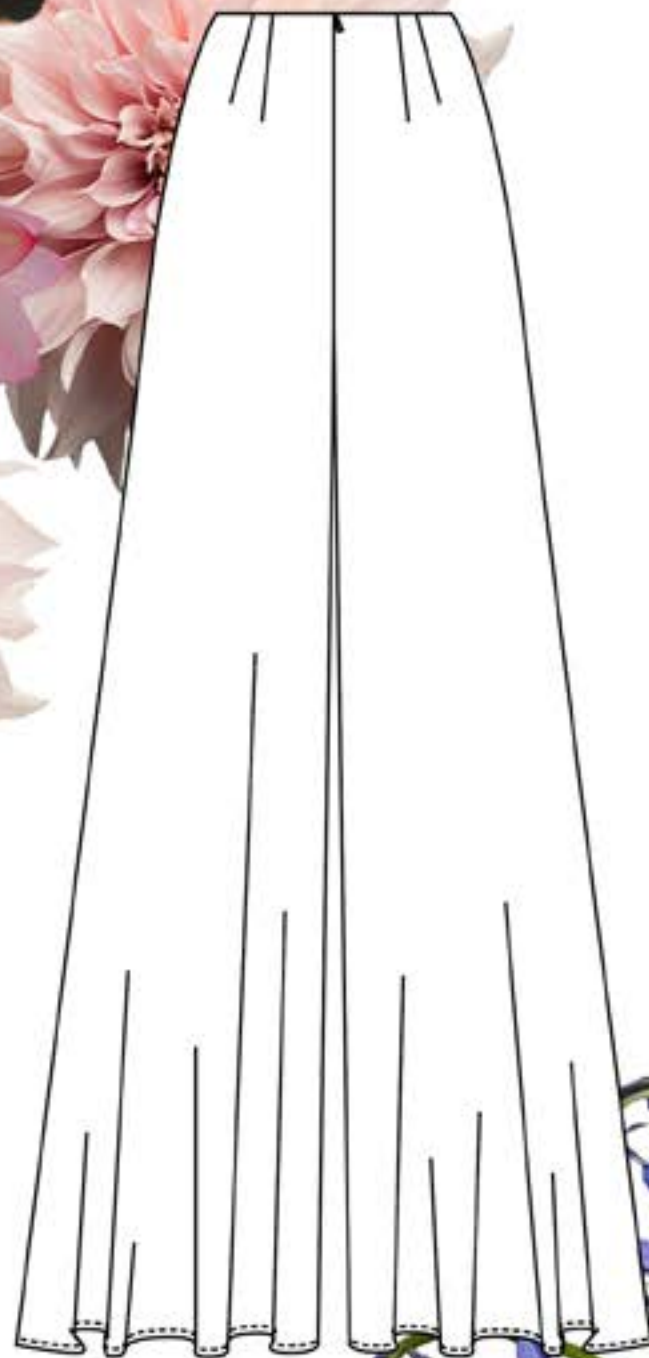
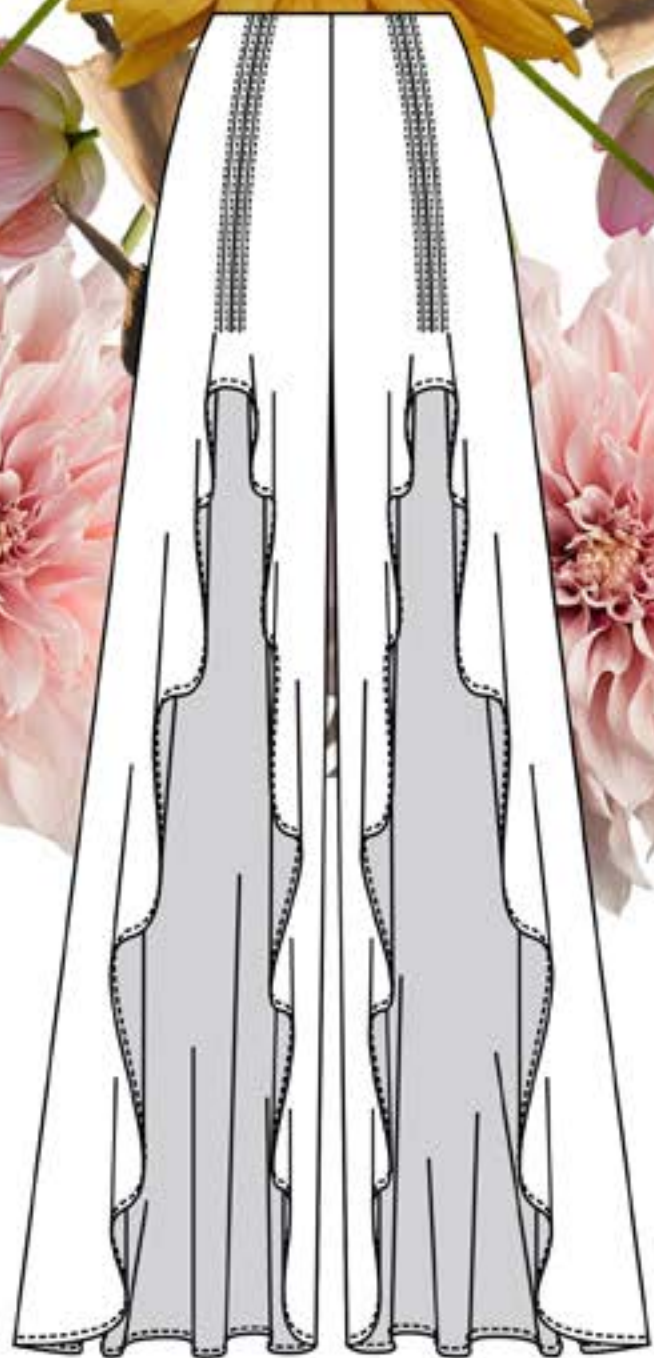
# Look 2

## Dyeing

- L2.1- Ruffle Coat
  - Outer fabric is Indigo Dyed. Lining fabric is Logwood dyed then spotted with Lemon Juice.
- L2.2- T-Shirt
  - Logwood Dyed then spotted with Lemon Juice.
- L2.3- Trousers
  - Undyed.
- L2.4- Shorts
  - Logwood Dyed then spotted with Lemon Juice.

Garment	Fabric	
L2.1 - Jacket	Sateen Sheeting Percale -Organic Textile Company	
L2.1 - Jacket Lining	Bamboo Silk -Organic Textile Company	
L2.1 - Jacket Ruffles	Voile Fine -Organic Textile Company	
L2.2 - T-Shirt	Jersey Mix, Bamboo and Organic Cotton -Organic Textile Company	
L2.3 - Trousers	Voile Fine -Organic Textile Company	
L2.4 - Shorts	Jersey Mix, Bamboo and Organic Cotton -Organic Textile Company	







# Look 3

## Dyeing

### L3.1- Jacket

- Outer fabric is Indigo Dyed. Lining fabric is Logwood dyed then spotted with Lemon Juice.

### L3.2- Top

- Logwood Dyed then spotted with Lemon Juice.

### L3.3- Trousers

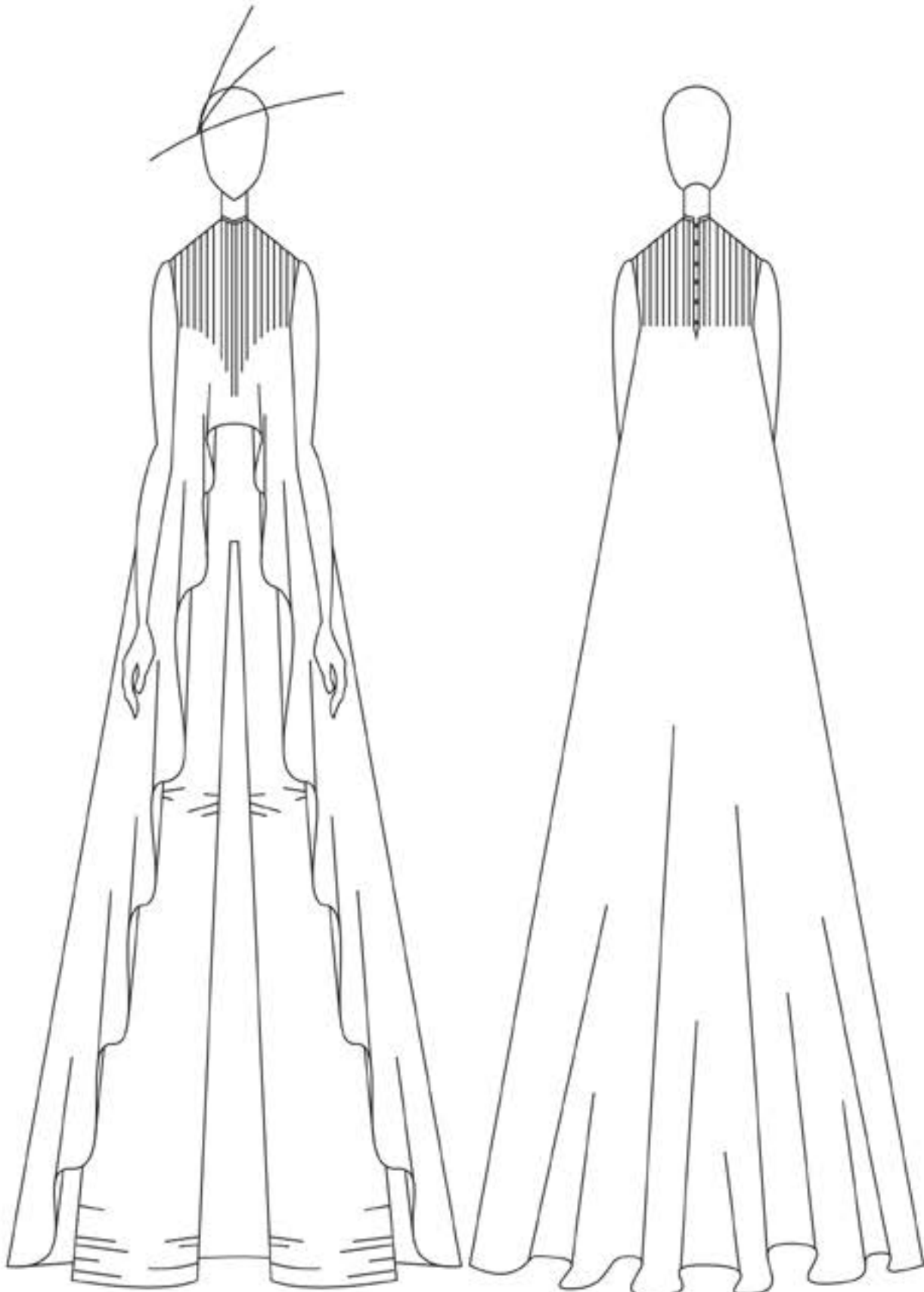
- Logwood Dyed.

Garment	Fabric	
L3.1 - Jacket	Sateen Sheeting Percale -Organic Textile Company	
L3.1 - Jacket Lining	Bamboo Silk -Organic Textile Company	
L3.2 - Top	Jersey Mix, Bamboo and Organic Cotton -Organic Textile Company	
L3.3 - Trousers	Sateen Sheeting Percale -Organic Textile Company	

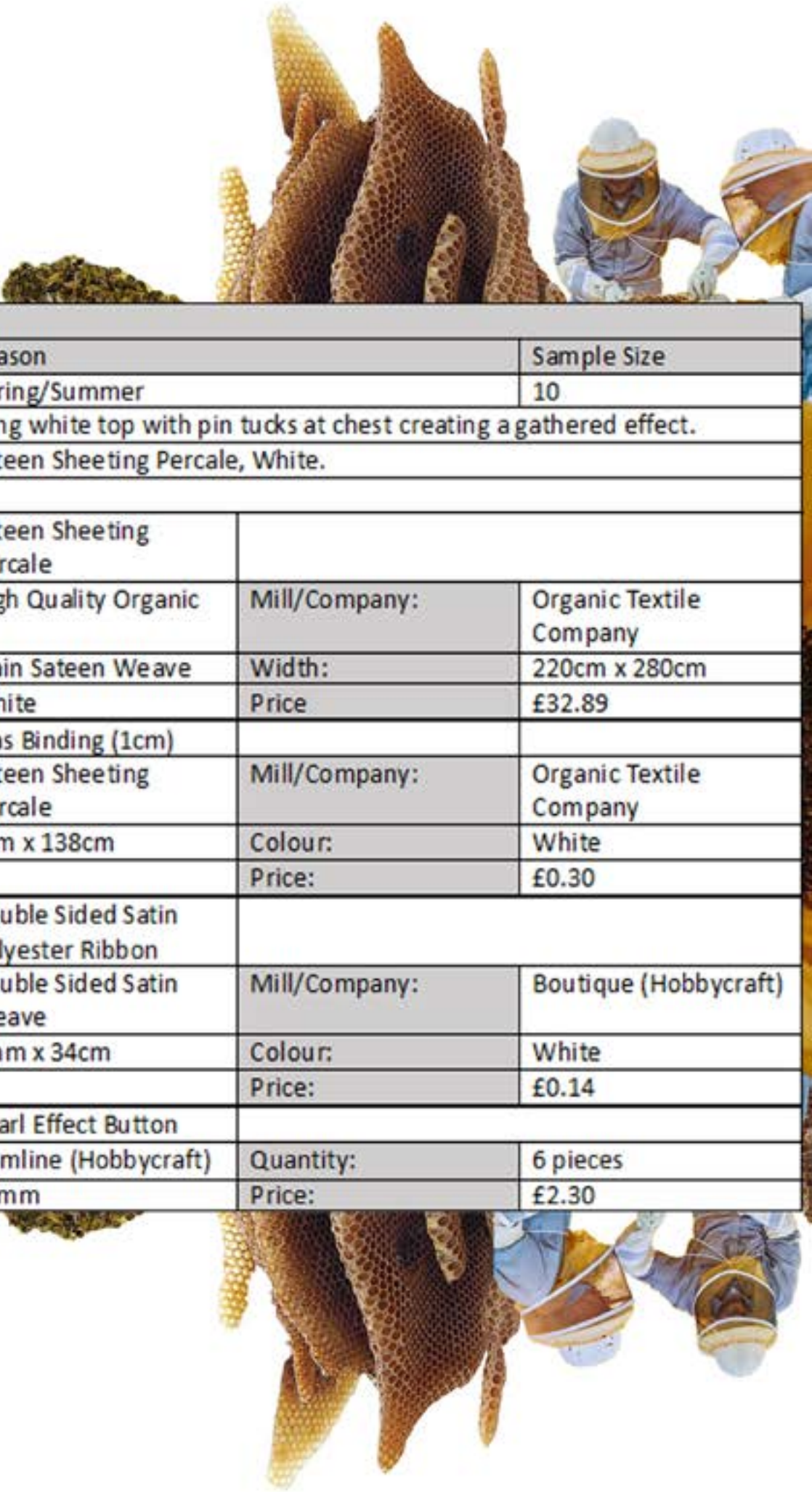






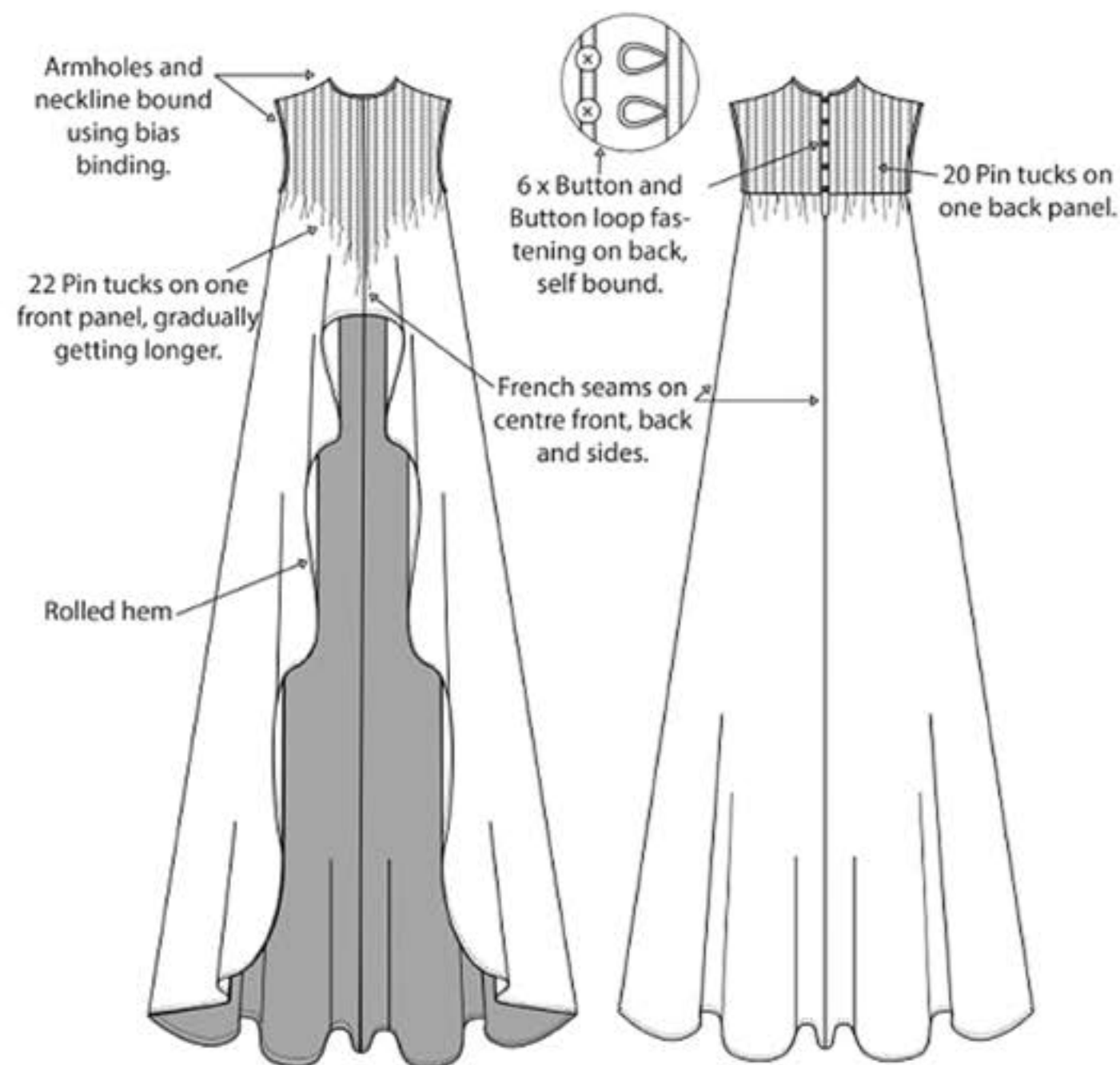
Cover Sheet			
Style	Season		Sample Size
L1.1	Spring/Summer		10
Style Description	Long white top with pin tucks at chest creating a gathered effect.		
Fabric/Colour	Sateen Sheeting Percale.		
			
Version	2		
Edit Date	06/05/21	Edited By	Tamsen Mellor-Gardner

Sourcing Information			
Style	Season		Sample Size
L1.1	Spring/Summer		10
Style Description	Long white top with pin tucks at chest creating a gathered effect.		
Fabric/Colour	Sateen Sheeting Percale, White.		
Main Self	Sateen Sheeting Percale		
Quality:	High Quality Organic	Mill/Company:	Organic Textile Company
Design:	Plain Sateen Weave	Width:	220cm x 280cm
Colour:	White	Price	£32.89
Trim 1	Bias Binding (1cm)		
Design:	Sateen Sheeting Percale	Mill/Company:	Organic Textile Company
Size:	4cm x 138cm	Colour:	White
		Price:	£0.30
Trim 2	Double Sided Satin Polyester Ribbon		
Design	Double Sided Satin Weave	Mill/Company:	Boutique (Hobbycraft)
Size:	3mm x 34cm	Colour:	White
		Price:	£0.14
Button 1	Pearl Effect Button		
Supplier:	Hemline (Hobbycraft)	Quantity:	6 pieces
Size:	10mm	Price:	£2.30





Technical Information			
Style	Season	Sample Size	
L1.1	Spring/Summer	10	
Style Description	Long white top with pin tucks at chest creating a gathered effect.		
Fabric/Colour	Sateen Sheeting Percale, White.		
Description	Date	Colour	Fabric
Long white top with pin tucks at chest creating a gathered effect.	06/05/21	White	Sateen Sheeting Percale.

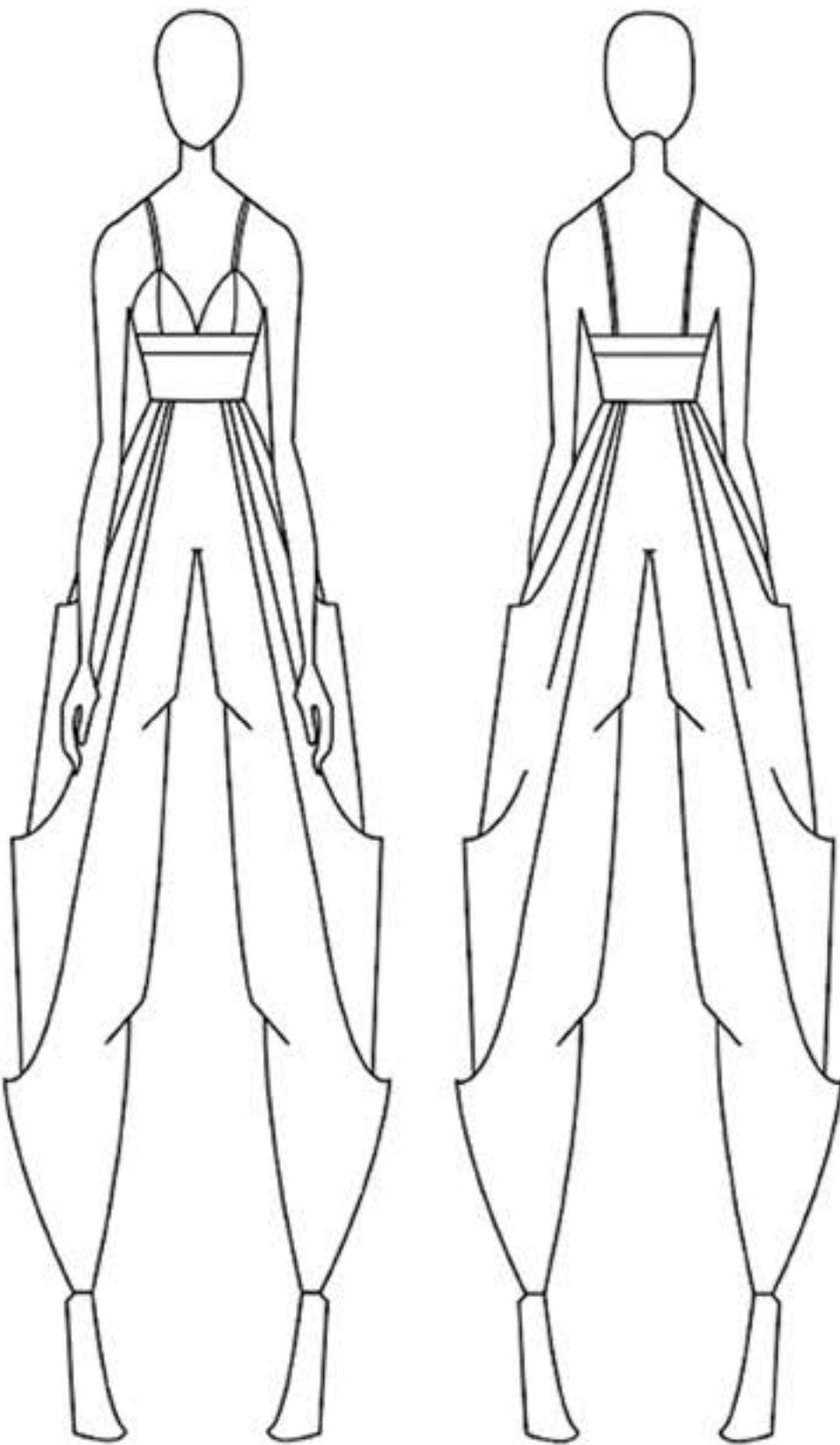


Seams	French Seams	Fastening	Button and button loops
Hem	Rolled Hem	Pin Tucks	0.5cm high
Arm Holes	Bias Bound		

Garment Tech Information		
Style	Season	Sample Size
L1.1	Spring/Summer	10
Style Description	Long white top with pin tucks at chest creating a gathered effect.	
Fabric/Colour	Sateen Sheeting Percale, White.	
Measurement Reference	Measurement Points	Length
1	CB Length from CB neck to hem	149cm
2	CF Length from CF neck to hem	51cm
3	Side Length from underarm at sidearm to hem	147cm
4	Shoulder length from side neck to top of armhole	15cm
5	Neck circumference	49cm
6	Armhole circumference	38cm
7	Fastening opening Length on CB from neck hole to bottom of opening	23cm
8	CB Length from fastening opening to hem	126cm
9	Distance between button/buttonholes	4.5cm
10	Distance between Pintucks	1cm
11	Height of Pintucks	1.5cm
12	Width of Bias Binding	1cm





Cover Sheet		
Style	Season	Sample Size
L3.3	Spring/Summer	10
Style Description	Large Pleated Trousers with Invisible zip.	
Fabric/Colour	Sateen Sheeting Percale, White, Naturally Dyed purple using Logwood.	
<div></div>		
Version	3	
Edit Date	20/05/21	<div>Edited ByTamsen Mellor-Gardner</div>

Sourcing Information			
Style	Season	Sample Size	
L3.3	Spring/Summer	10	
Style Description	Large Pleated Trousers with Invisible zip.		
Fabric/Colour	Sateen Sheeting Percale, White, Naturally Dyed purple using Logwood.		
Main Self	Sateen Sheeting Percale		
Quality:	High Quality Organic	Mill/Company:	Organic Textile Company
Design:	Plain Sateen Weave	Width:	140cm x 280cm
Colour:	White	Price	£20.93
Zip 1	YKK Concealed Zip		
Design:	Invisible Zip	Mill/Company:	YKK (Hobbycraft)
Length	20cm	Colour:	White
		Price:	£2.50
Dye 1	Logwood Extract		
Colour:	Purple	Company:	Dyeing Crafts
Quantity needed:	14.24g	Price:	£6.84





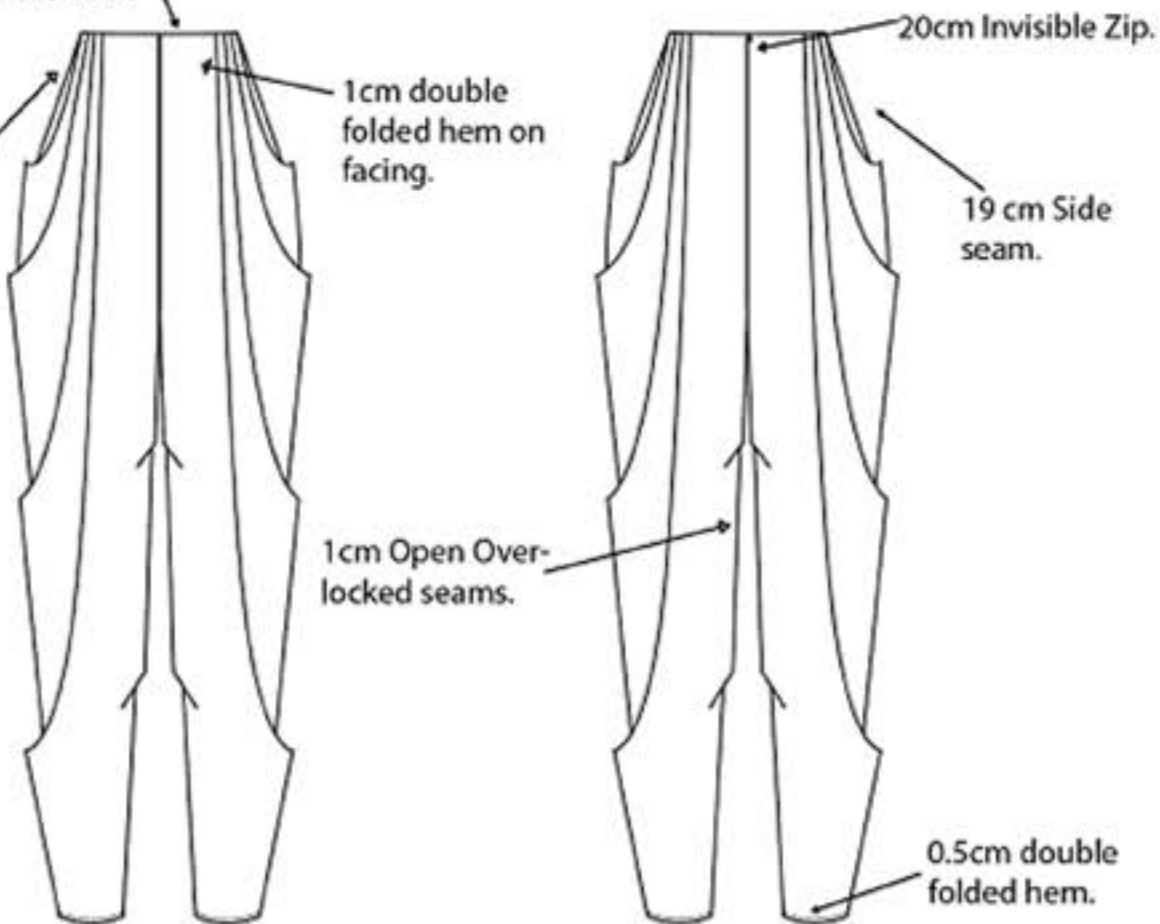


Technical Information		
Style	Season	Sample Size
L3.3	Spring/Summer	10
Style Description	Large Pleated Trousers with Invisible zip.	
Fabric/Colour	Sateen Sheeting Percale, White, Naturally Dyed purple using Logwood.	

Description	Date	Colour	Fabric
Large Pleated Trousers with Invisible zip.	20/05/21	Fabric is White but naturally dyed purple using logwood.	Sateen Sheeting Percale, White.

Trouser facing made from outer fabric with one dart on the front panels and two darts on the back panels.

Four pleats on front and back panels. Each pleat is 10cm long with 2cm inbetween each pleat.



Seams	Open Overlocked	Fastening	Invisible Zip
Hem	0.5cm	Pleats	10cm long pleats with 2cm between each pleat.

Garment Tech Information		
Style	Season	Sample Size
L3.3	Spring/Summer	10
Style Description	Large Pleated Trousers with Invisible zip.	
Fabric/Colour	Sateen Sheeting Percale, White, Naturally Dyed purple using Logwood.	

Measurement Reference	Measurement Points	Length
1	Inside Leg Length	78 cm
2	Ankle Circumference	31.8 cm
3	Waist Circumference	74.5 cm
4	CB Length from Waist to crotch	39 cm
5	CF Length from waist to crotch.	34 cm
6	Side hip seam from waist to end of seam.	19 cm
7	CF to first pleat.	13 cm
8	Distance between each pleat.	2 cm
9	Pleat length.	10 cm
10	Side seam to first pleat.	0.3 cm
11	Invisible zip opening length.	21.5 cm
12	Facing length from waist to hem.	9 cm
13	CB length to first dart. (Facing)	5.5 cm
14	CB length to second dart. (Facing)	10.5 cm
15	CF length to dart. (Facing)	8 cm
16	Inside back dart length (Closest to CB) (Facing)	8.8 cm
17	Outside back dart length (Closest to outside seam) (Facing)	7 cm
18	Front dart length. (Facing)	8 cm
19	Inside back dart width (Closest to CB) (Facing)	2 cm
20	Outside back dart width (Closest to outside seam) (Facing)	2 cm
21	Front dart width. (Facing)	2 cm

















