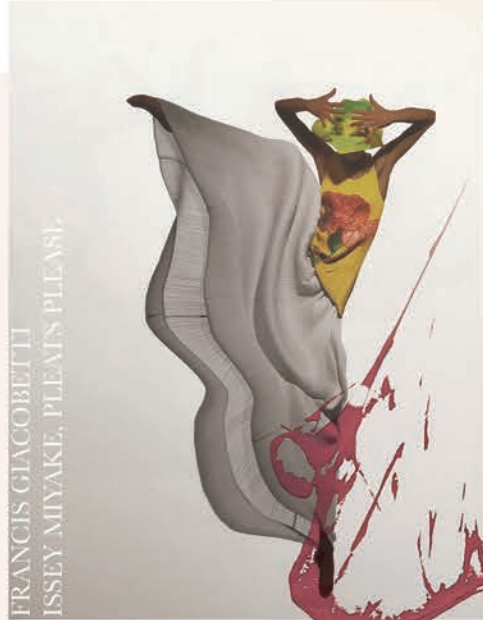
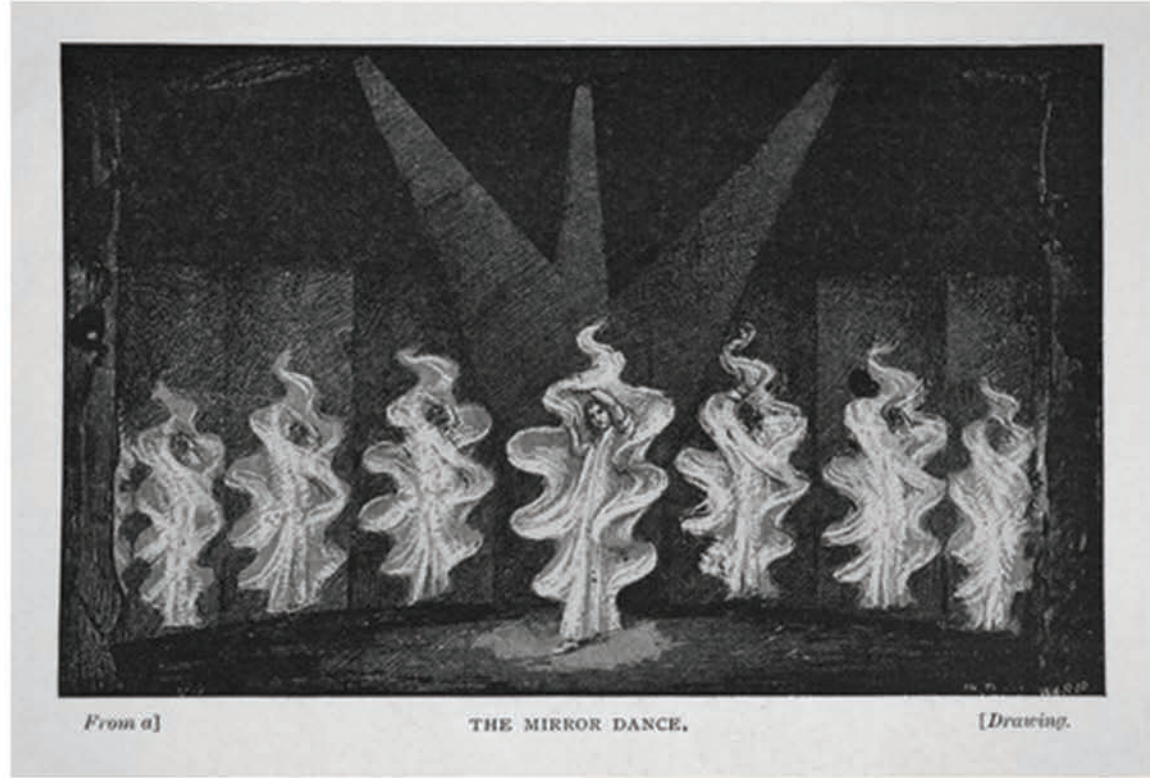


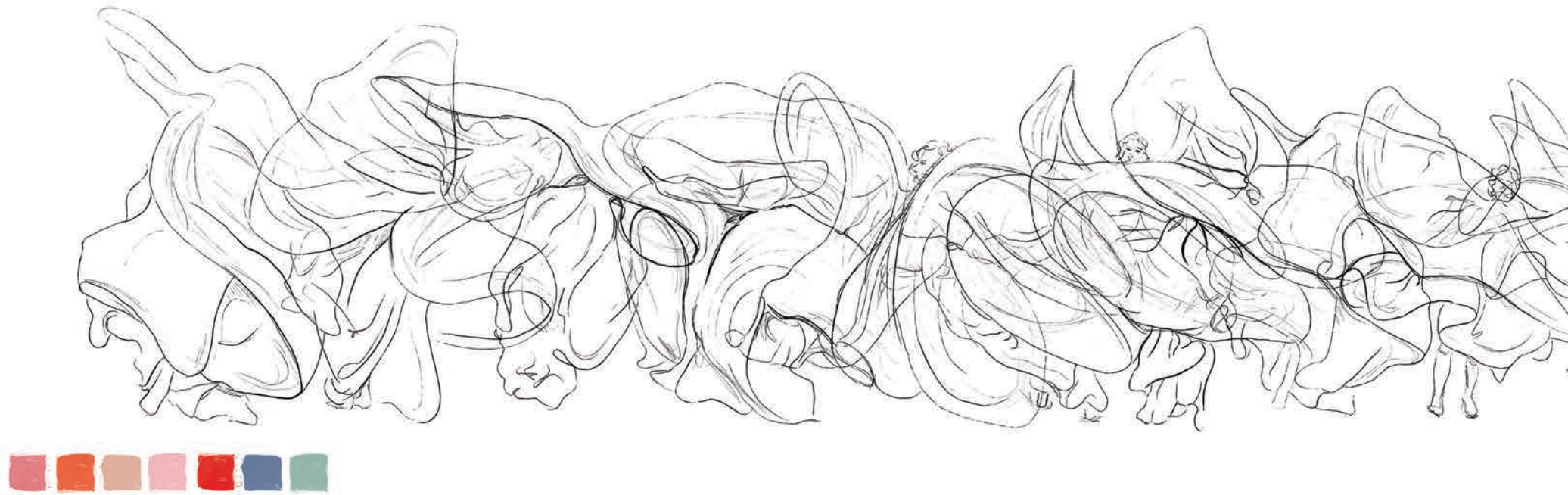
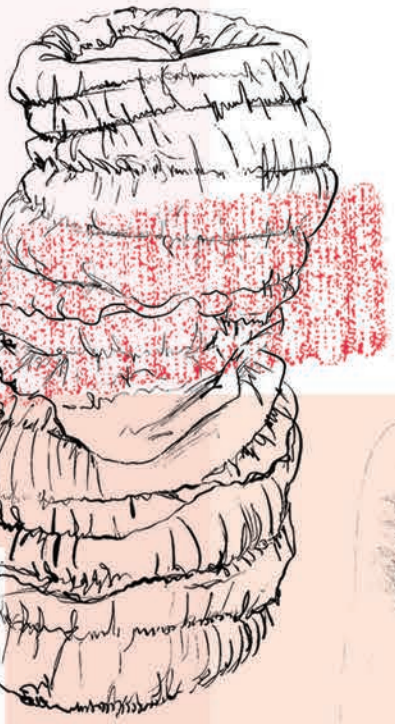
MOVING STILL  
SPRING SUMMER 2025



FRANCIS GIACOBETTI  
ISSEY MIYAKE, PLEATS PLEASE



ISSEY MIYAKE, PLEATS PLEASE



Through a balance of transparency, harmonious blends of yarn glide against each other creating a mass of density and texture. Infused in hues of orange and blush and infiltrated by stripes of vivid red.

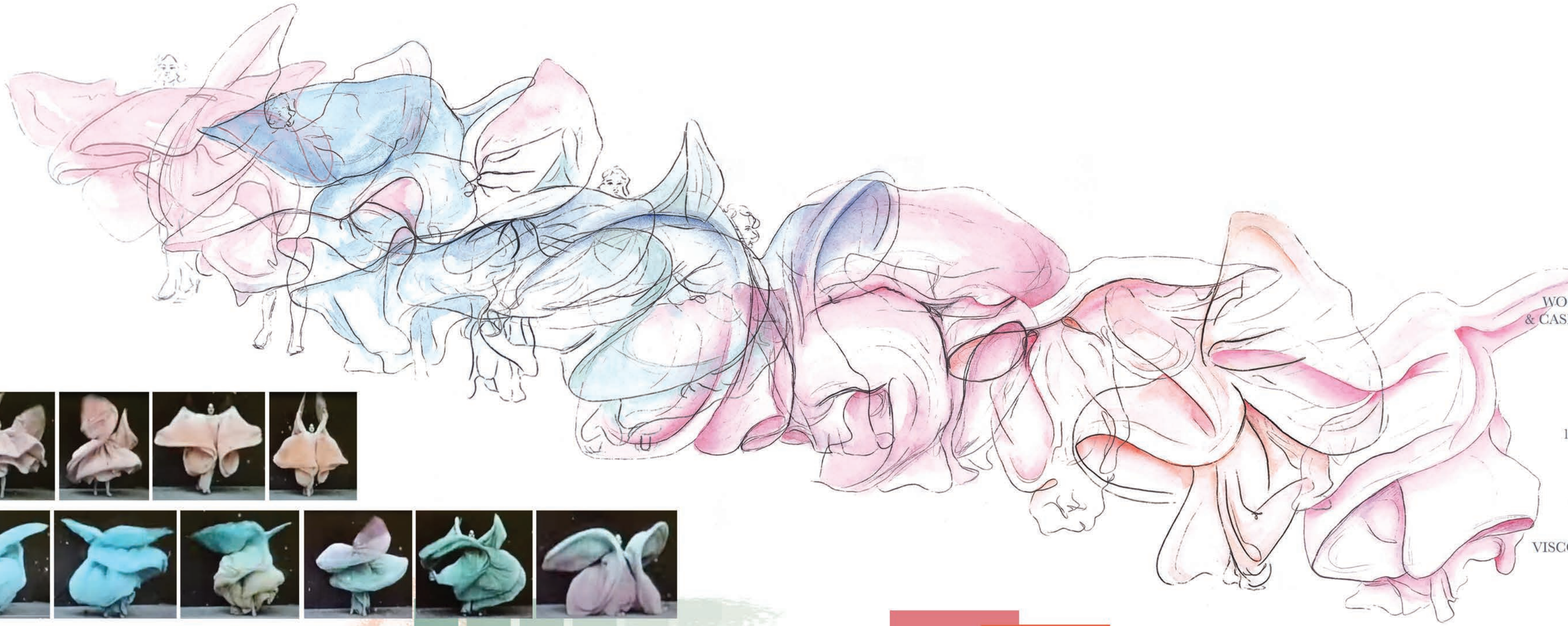
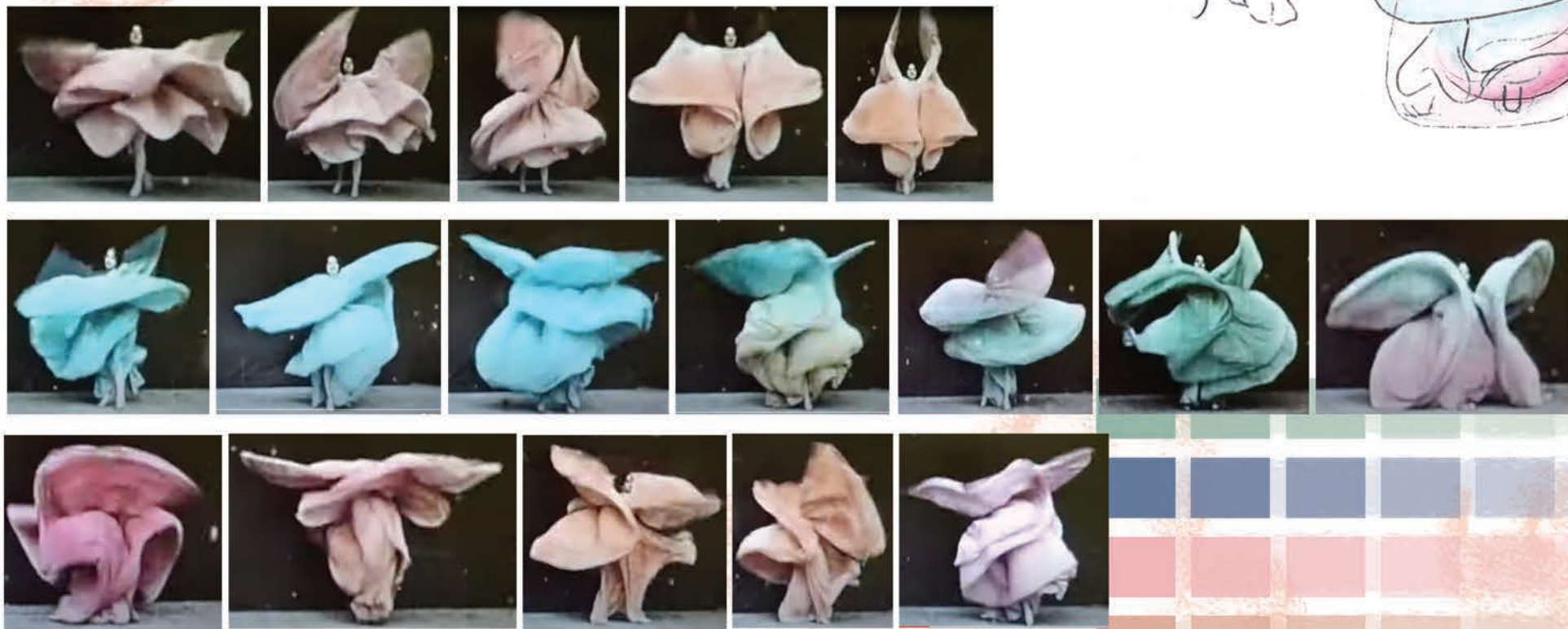
This elevated contemporary collections fluidity and movement birth living textiles, exploring the relationship knitwear has with the body to engineer an extension of the new femininity portrayed by Loie Fuller in the Serpentine Dance.



COLOUR AND YARN  
TAKEN FROM FOLIES-BERGÈRE PROMOTIONAL ARTWORK



La Loie Fuller, Folies-Bergère 1897  
Artist- Jules Cheret



WOOLS, MERINOS  
& CASHMERE BLEND.



COTTON,  
100% & BLENDS.



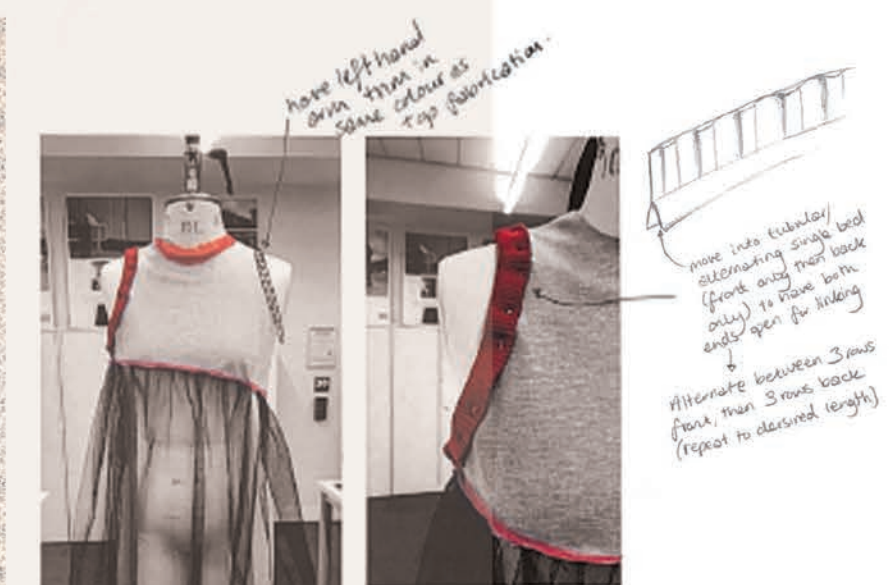
VISCOSE STRETCH.



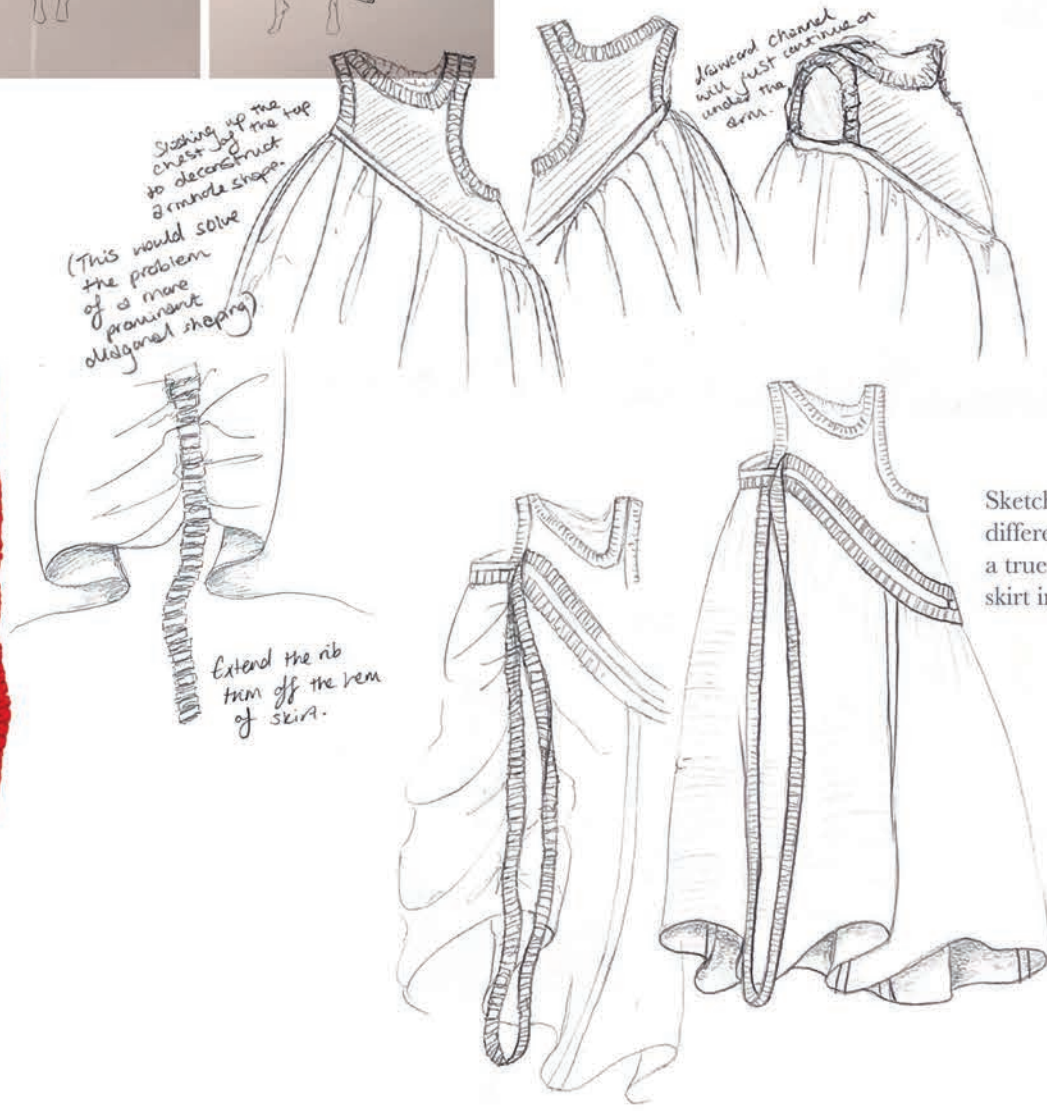
MONOFILAMENTS.







Split strap detail.



Sketches representing the difference in silhouette with a true rib and a mock rib skirt inserts.

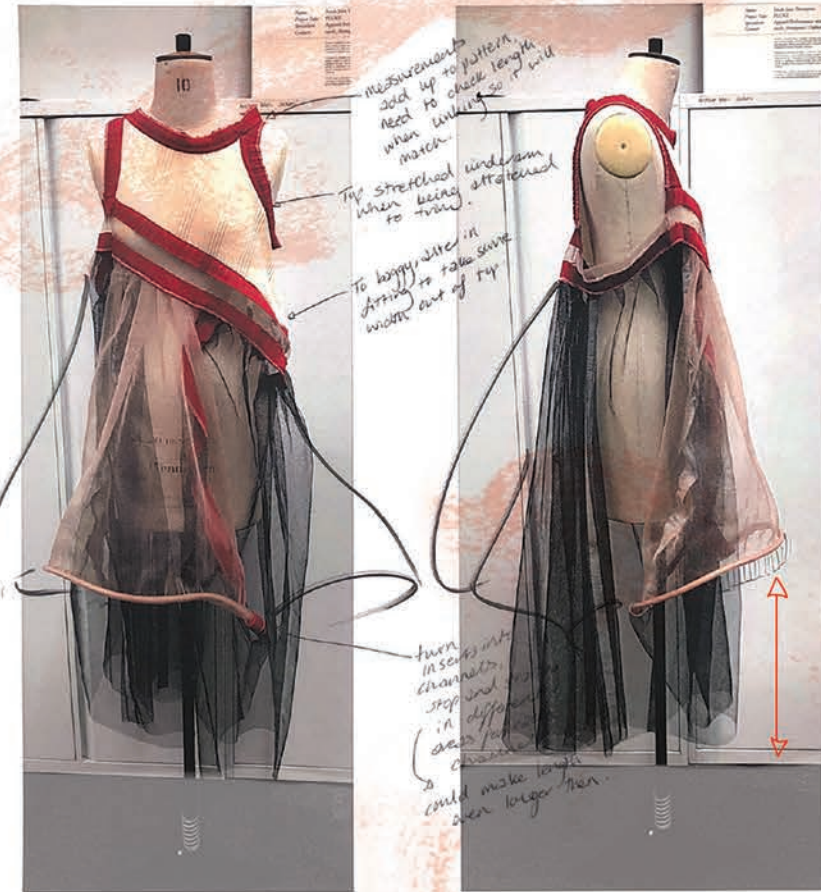


Accenting ends of knitted drawcords with pops of blue.

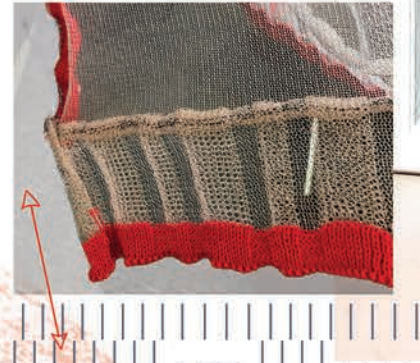
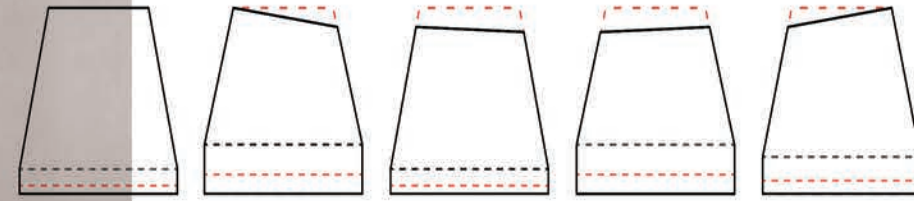
LOOK ONE  
THE BILLOWED MONOFILAMENT DRESS  
Inspired by the shaping created through the mass of cloth during the Serpentine Dance.



## LOOK ONE SKIRT PROCESS AND DEVELOPMENT



Fashioning skirt panels to achieve full volume around whole skirt circumference and having alternating height trims.

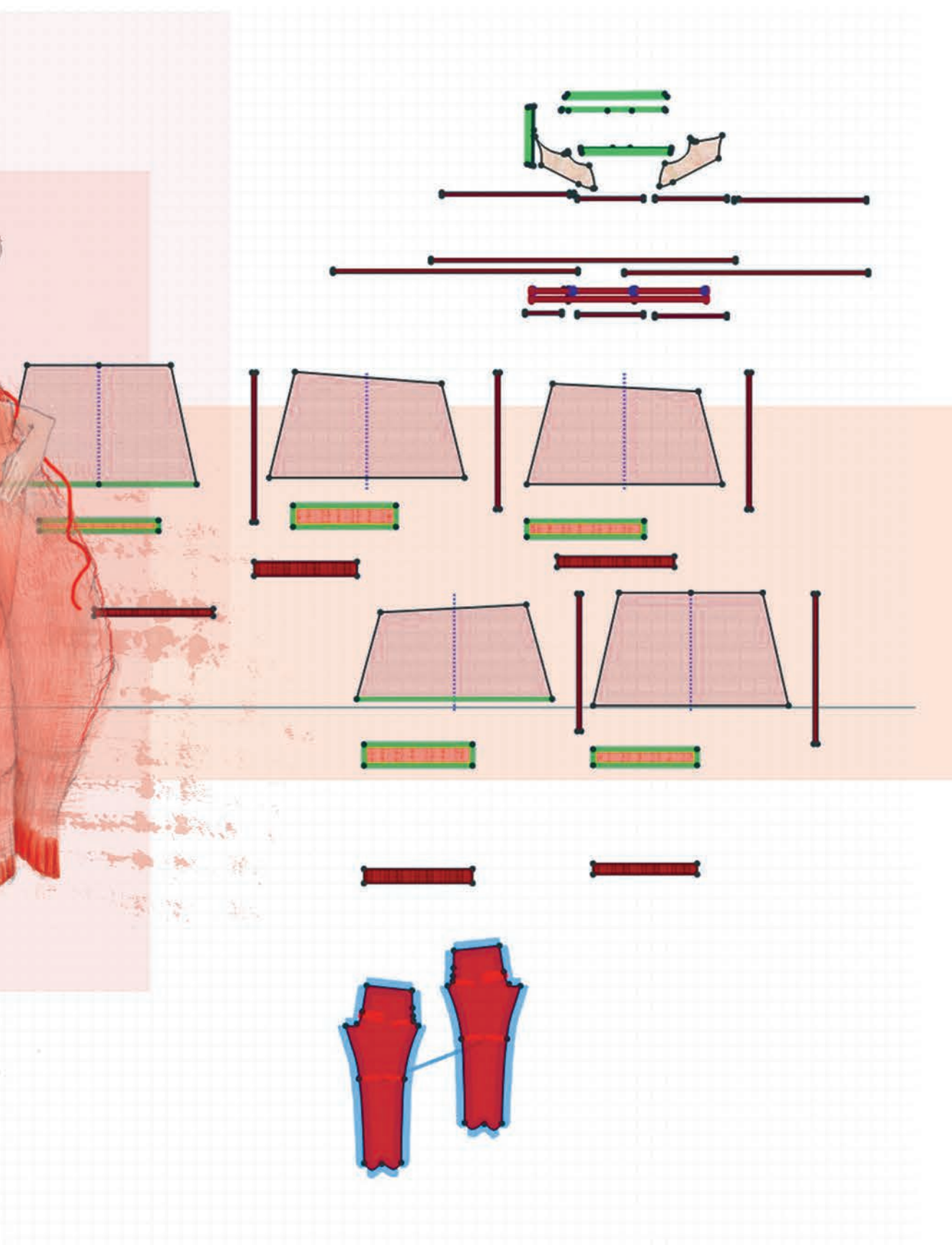
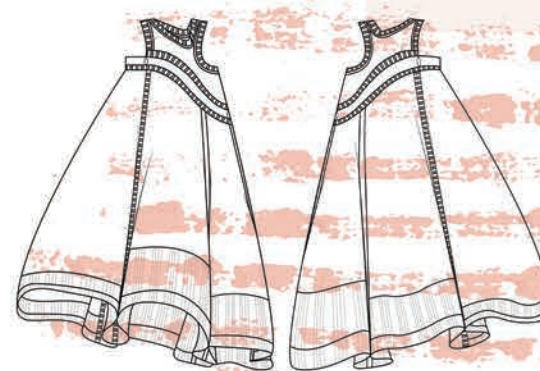


12 gauge /  
15 M per bed  
2x2 rib 150rs  
4rs all needles  
200rs tubular





CLO-3D  
THE BILLOWED MONOFILAMENT DRESS







'The Lily' Serpentine Dance



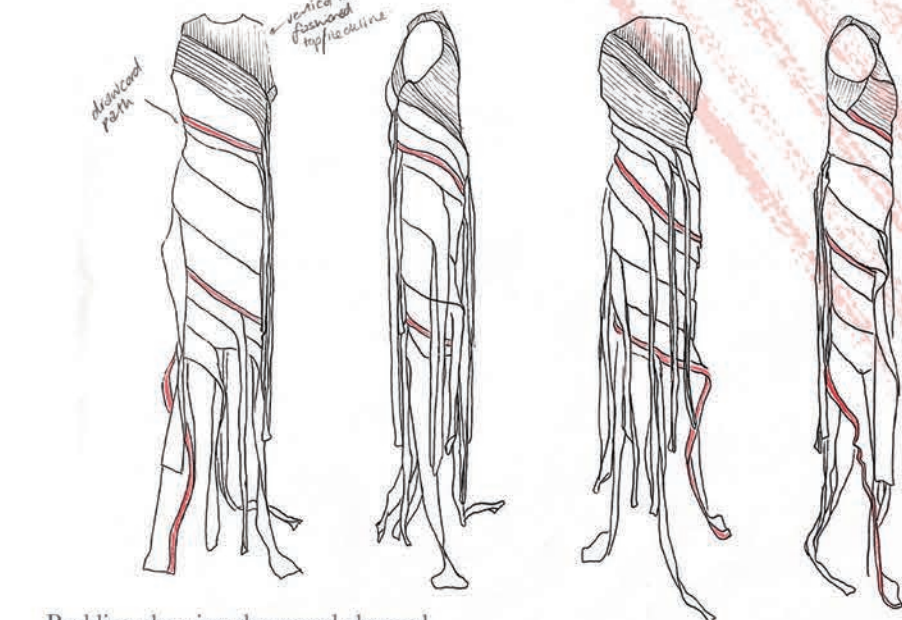
## LOOK TWO

### THE DECONSTRUCTED LILY DRESS

Deconstructing the silhouette shown in the Lily dance into an innovative wearable living textile.



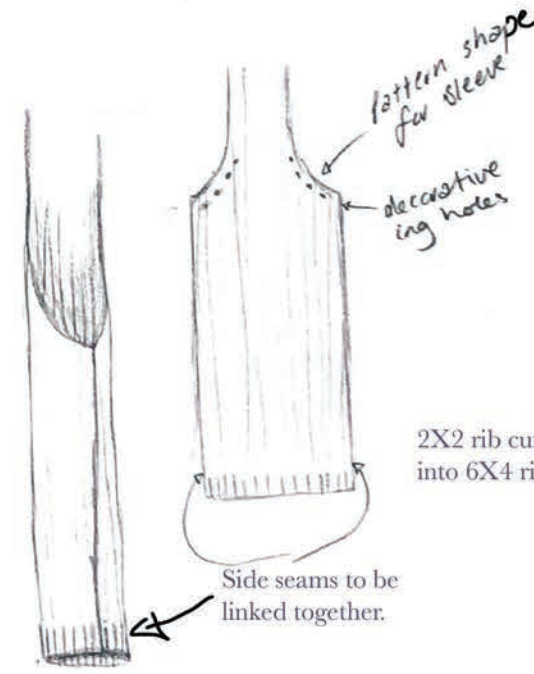
Beginning of silhouette moulage journey.



Red line showing drawcord channel that wraps the full circumference of dress from underarm to hem.



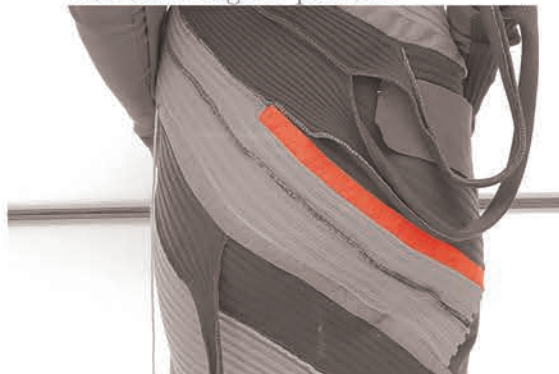
Development: turning 3 drape ends into functioning sleeves, to come out of back hip position, all from same point.



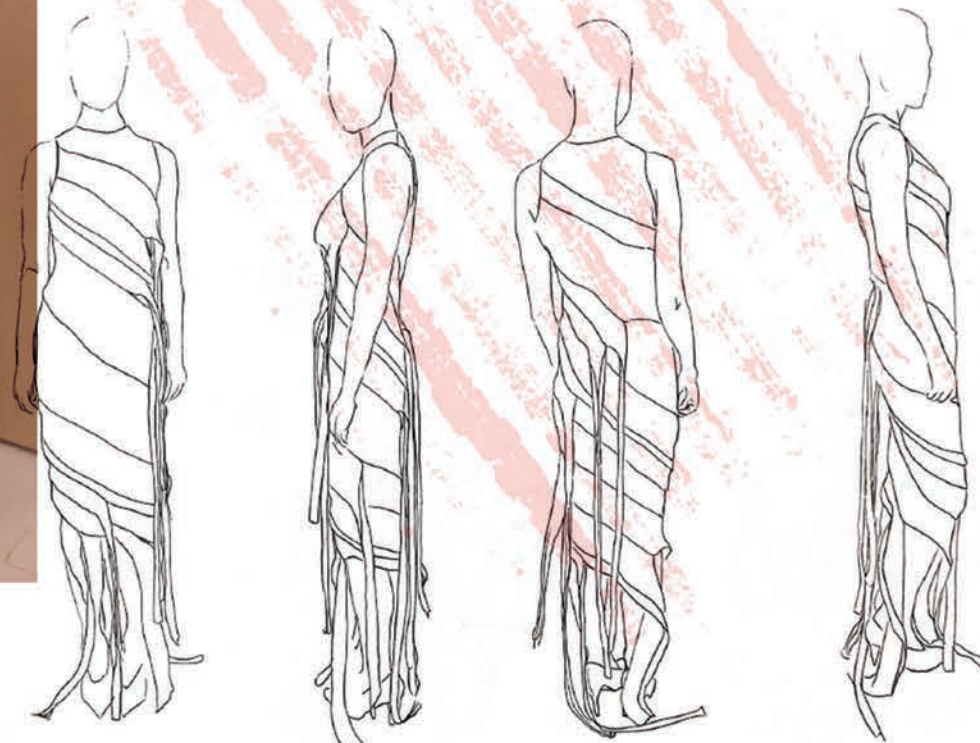
2X2 rib cuff before transfring into 6X4 rib fabric.

Side seams to be linked together.

Confident angular pannels.



Keep shorter tubular inserts in dress as unfunctioning channels, harsh angle distrupts fluity of rib and adds sharp contrast to design.







### LOOK THREE

## THE CONSTANT FRAME TOP

Through lighting and stage effects Fuller's motions appeared frozen, this top represents the contrast between structure and fluidity.



