

concept



modular pleats

Modular fashion is pivotal in the creation of the sustainable lifecycle of a garment to prevent and eliminate waste. Too often clothes are discarded once product doesn't fit the needs of the consumer. Modular fashion addresses this by providing interchangeable fashion which adapts to consumers ever changing needs and desires. My concept of statement modular fashion will focus upon combining the multifunctional aspects of a transformational modular design with an large emphasis on a contemporary fashion aesthetic. The modular element within this collection will be focused on using visible metal zips to attach the elements of the modular fashion together. This will bring out a strong hard wear feature within the metal, which will be a strong component within this design work.

The concept combines layers of beautifully pleated sections of fabric which can attach to basic silhouettes. This creates interchangeable garments which target the contemporary consumer focused on creating change in the world.

fabrication

SHIRTING



COTTON POPLIN PLAIN

STRETCH POPLIN

POLY ORGANZA

CREPE GEORGETTE

SILK MIX TRIPLE ORGANZA

ORGANZA

REGAL SILK

PLEATED ORGANZA

PLEATED CHIFFON

PLAIN CHIFFON

DOUBLE SIDED SATIN

DOUBLE SIDED SATIN

STRETCH SATIN COTTON BLEND

CHARMEUSE SATIN

STRETCH VELVET PLEATS

ANTI-STATIC LINING

COURDROY

PURE NEW WOOL SUITING UNIVERSAL

PREMIUM 100% WOOL SUITING

100% MERINO WOOL SUITING

WOOL VENETIAN

FLUFFY COATING WITH RECYCLED WOOL

GABARDINE TWILL

LIGHTWEIGHT DEVELOPMENT



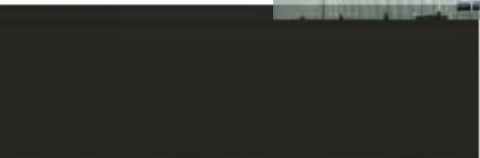
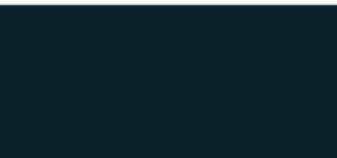
DRSS FABRIC



SUITING

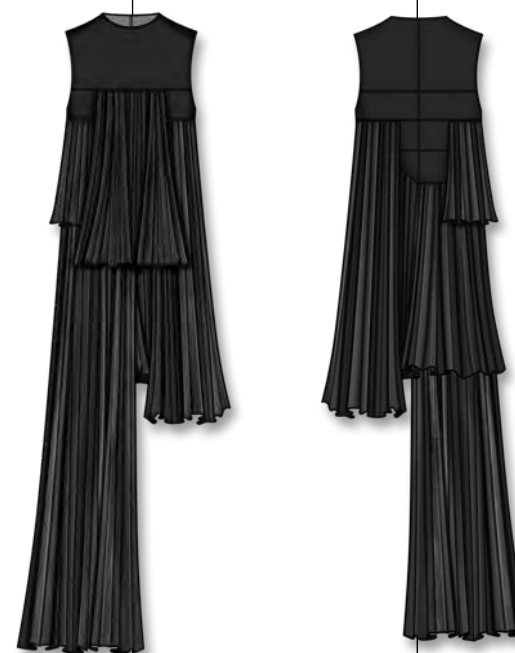


colours





outfit 01

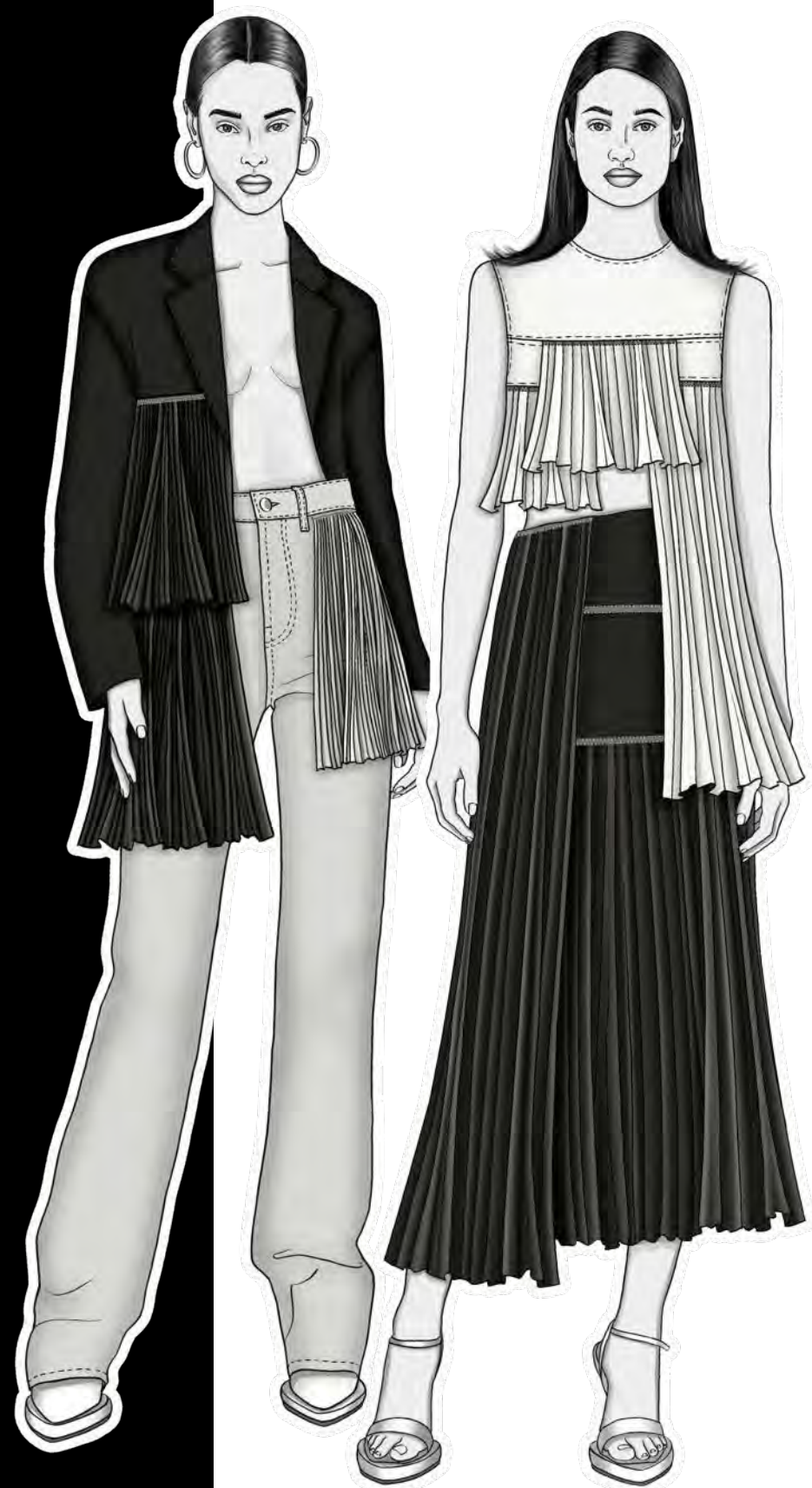


outfit 03

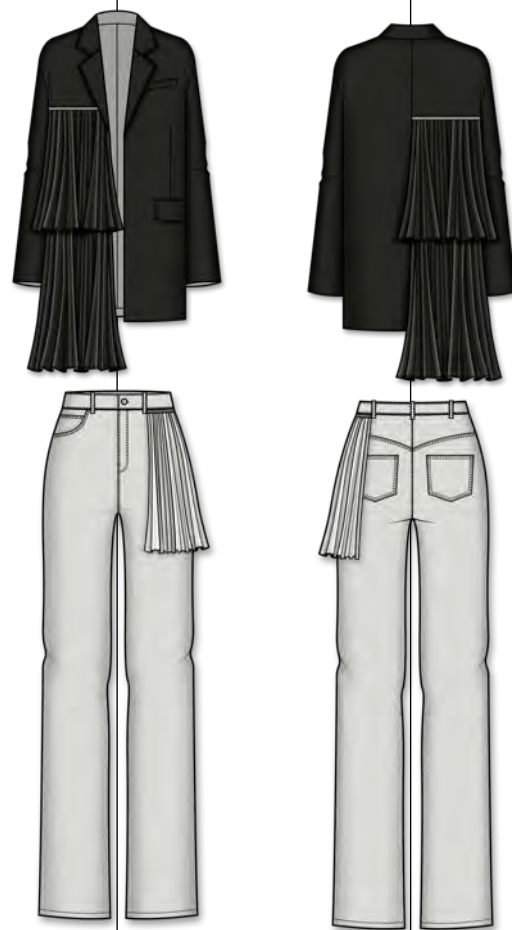


outfit 02

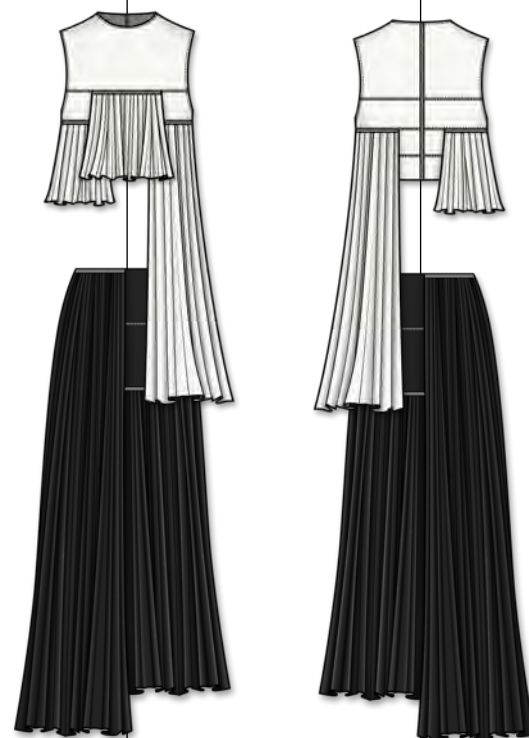




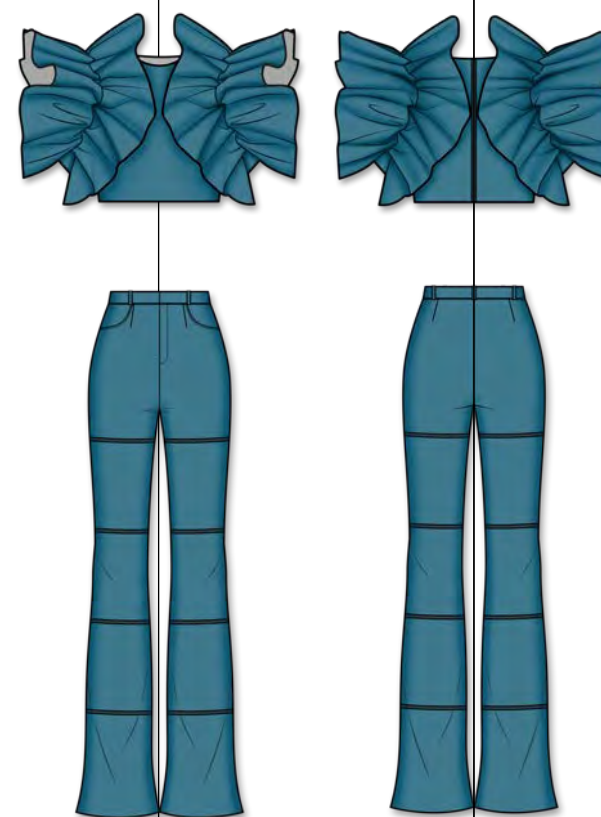
outfit 04

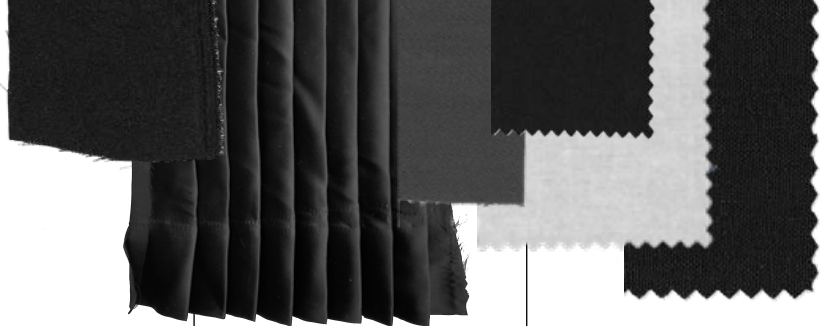


outfit 05



outfit 06





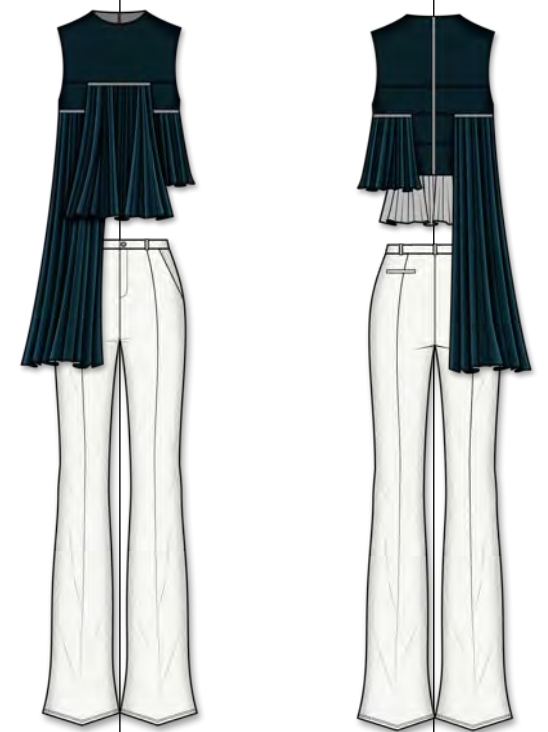
outfit 07



outfit 08



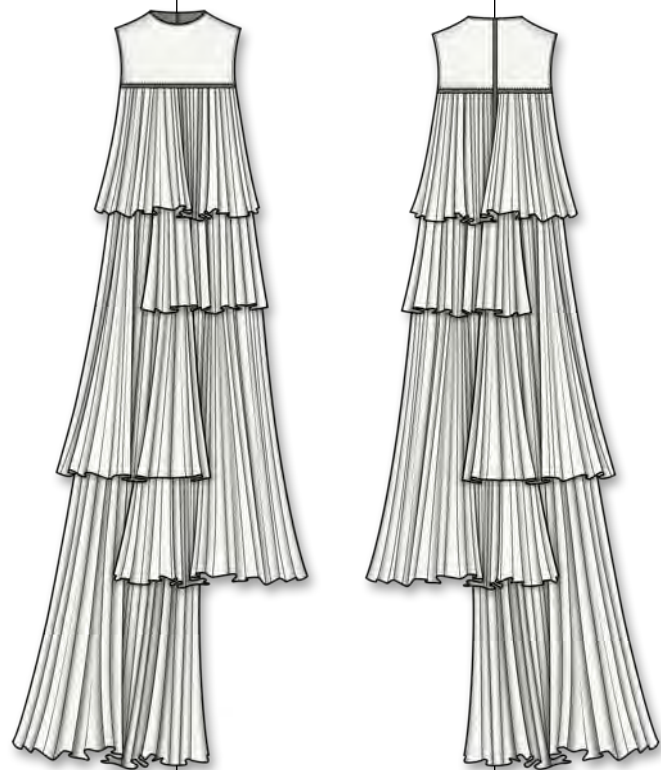
outfit 09



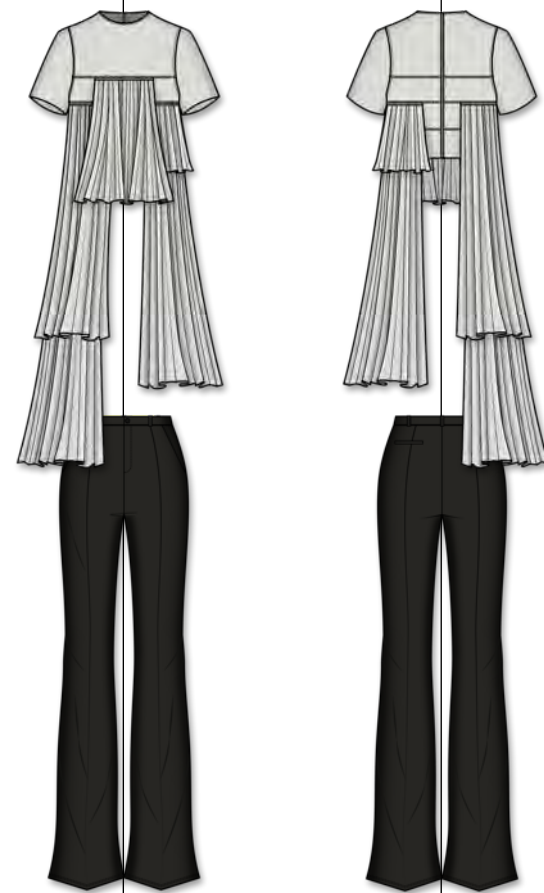
outfit 10



outfit 11



outfit 12



outfit 13





The Modular Dress //



Modular Pleats Collection Line-Up//

A vertical strip of various fabric swatches, including solid colors (green, black, yellow, white, brown, red, grey), patterns (polka dots, diamond mesh), and textures (knit, ribbed, woven).

A collage of various digital art patterns and textures. At the top center is a black binder clip. Below it, on the left, is a pink and blue wavy pattern. To the right of that is a dark blue and black pattern. Further right is a yellow and black pattern. At the bottom left is a green and black pattern. The background is a mix of these patterns and textures.



LOOK ONE



LOOK TWO





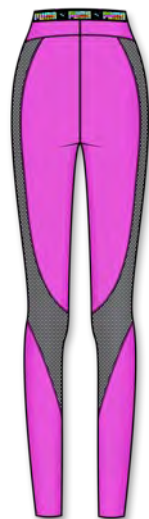
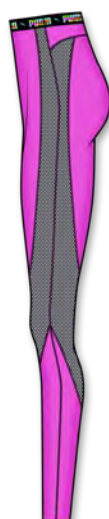
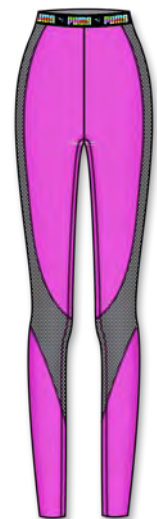
LOOK THREE



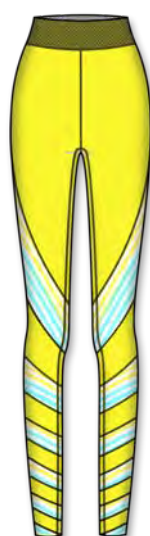
LOOK FOUR

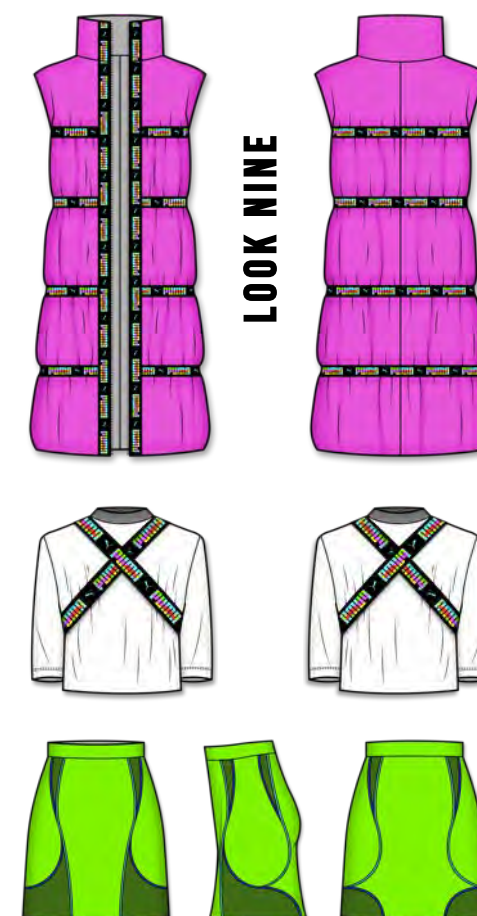


LOOK FIVE



LOOK SIX





SIAN

ABSTRACT WILDFIRE AW21
A GENDER FLUID COLLECTION

This collection takes inspiration from natural wildfire disasters and the smoke which they create. This collection takes the negativity of climate change and turns it into a powerful collection which intends to inspire education to begin to understand the capabilities of the natural world.

“ Natural disaster
Noun
Plural noun: natural disasters

A natural event such as a flood, earthquake, or hurricane that causes great damage or loss of life

FABRICATION

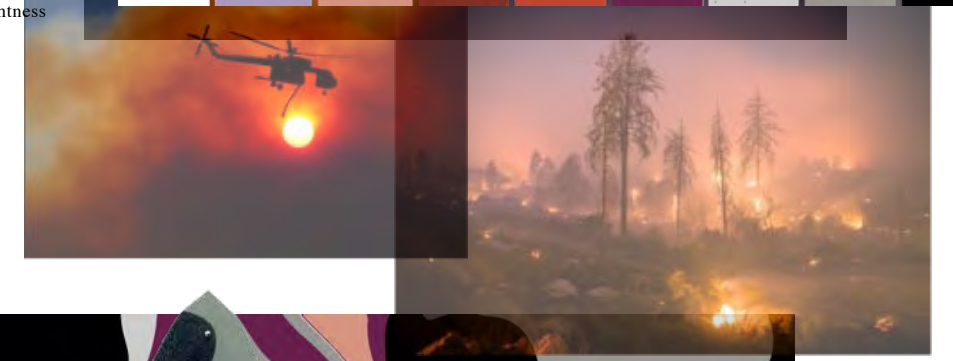


- Fabrics (from left to right):
Hainsworth wool
Leather
Polyester zibline
Pure wool stretch suiting
Fluffy coating fabric
Herringbone weave
Pleated organza
Lightweight organza
Silk chiffon
Pleated chiffon
Lightweight chiffon
Satin back crepe
Double sided satin
Satin plain
Lightweight viscose jersey
Stretch satin cotton blend
Silk georgette
Cotton poplin plain
Stretch poplin

COLOUR



The colours within this palette are taken from the smoky hues found within devastating uncontrollable wildfires. The colours are mostly muted, whilst conveying highlights of brighter hues within the palette. Designs will be focused around utilising deeper colours to imitate smoke clouds, not only through colours but through silhouette, whilst emitting flickers of brightness within hidden details and accessories.



”

PRINT DEVELOPMENT

The prints for this collection have been developed using inspiration of abstract wildfires. Primarily inspiration has been taken from the organic movement of flames and smoke, which have influenced these impactful abstract and luxurious patters. These prints were designed to carry forward the movement of wildfires, and the colours are inspired by the many undertones which are seen within these natural disasters.

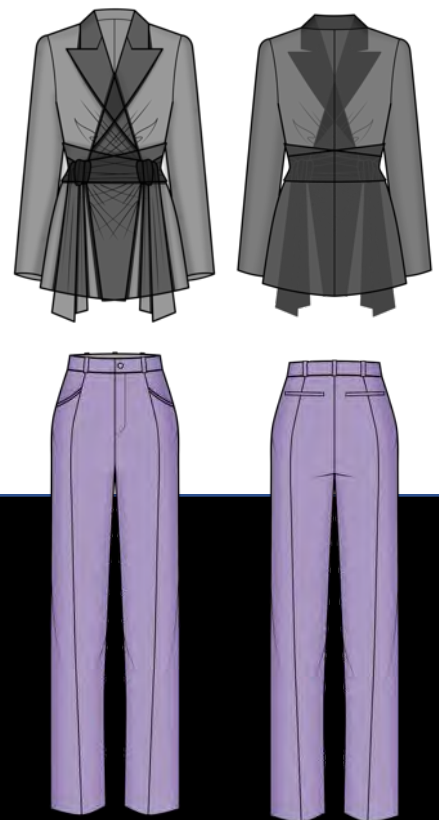




LOOK 1

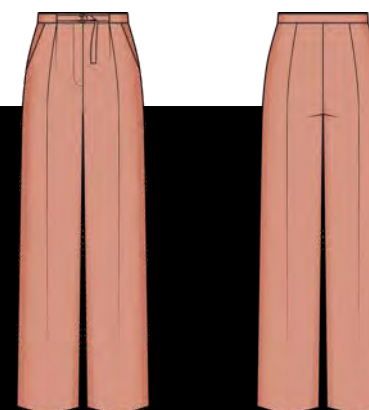
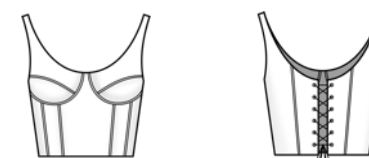
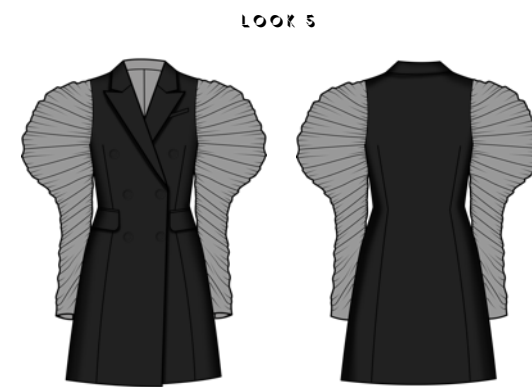
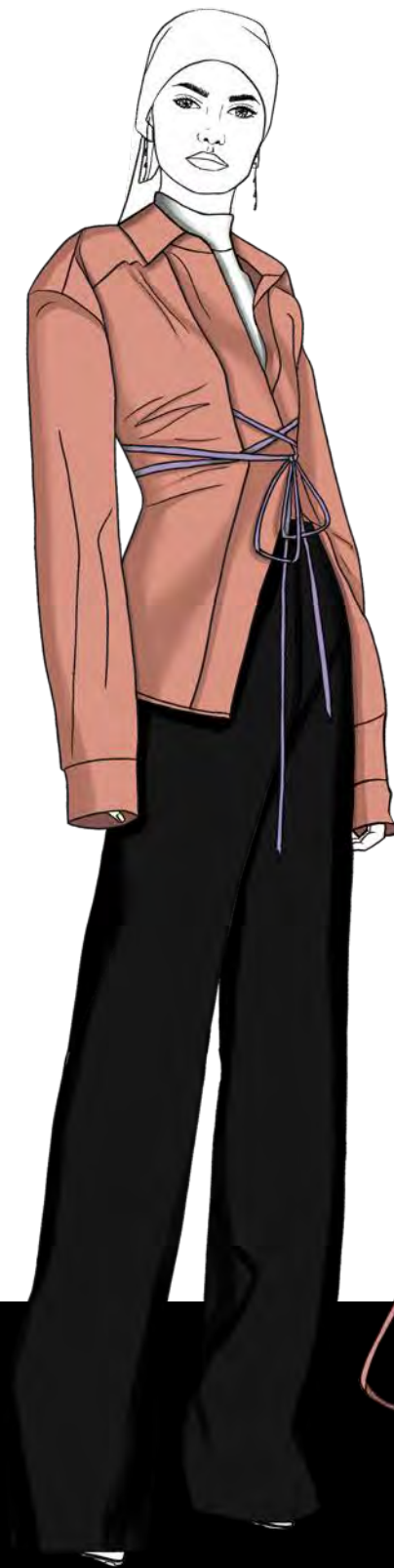
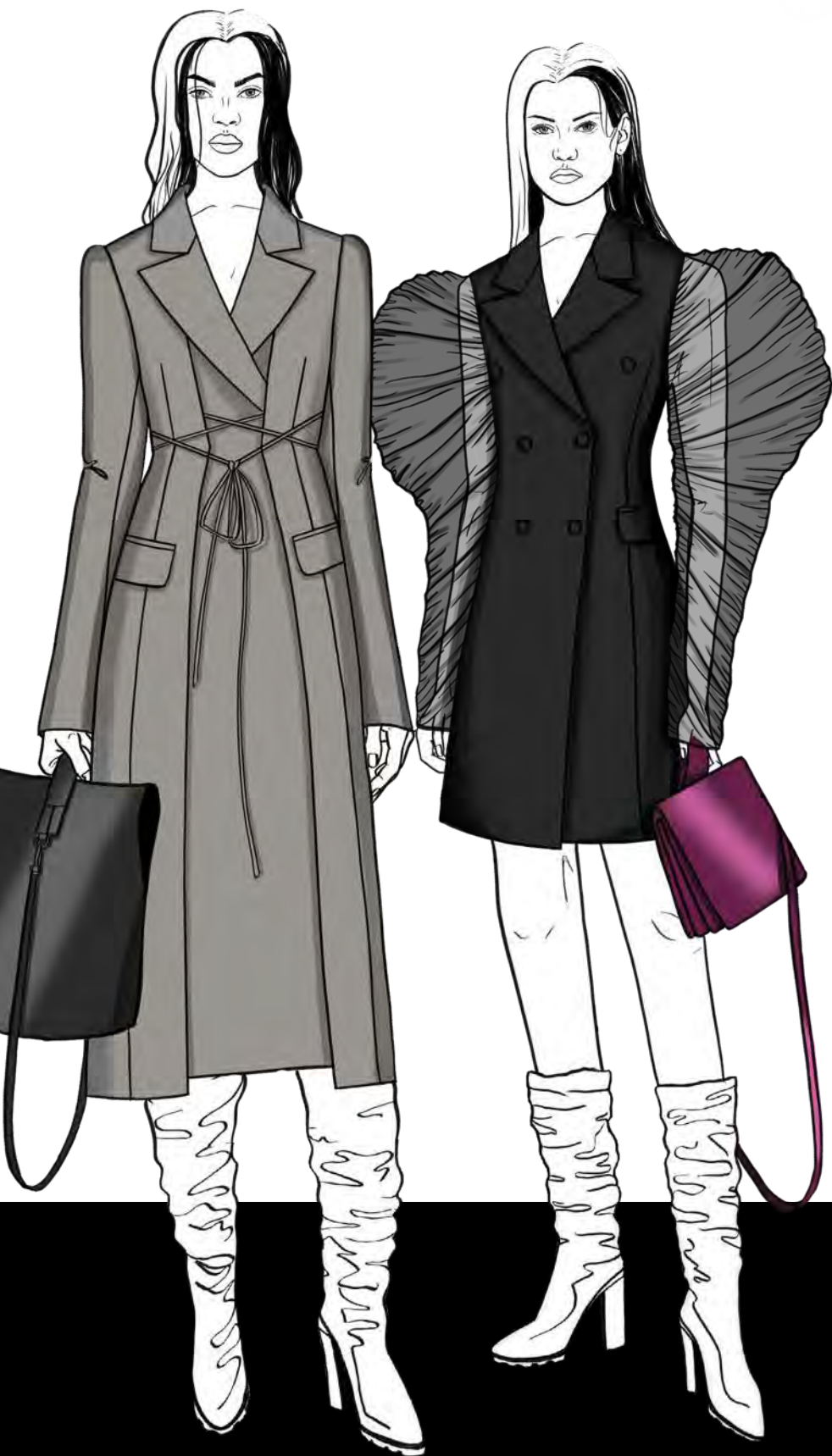


LOOK 2

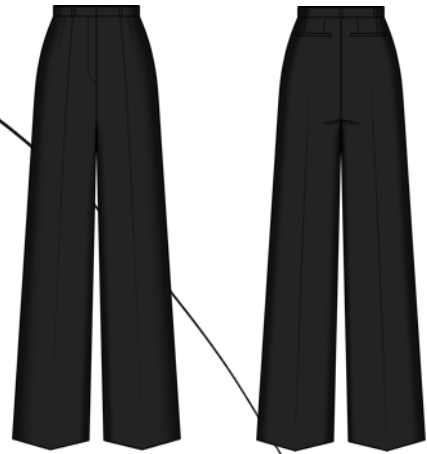


LOOK 3

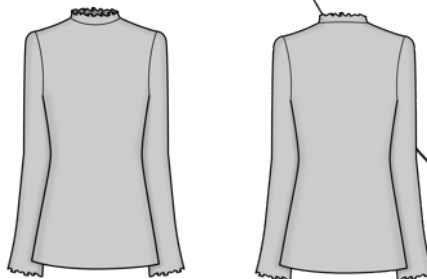




LOOK 8



LOOK 9



LOOK 10



LOOK 11





ABSTRACT WILDFIRE LINE- UP // A GENDER FLUID COLLECTION

MODERN ANATOMY //



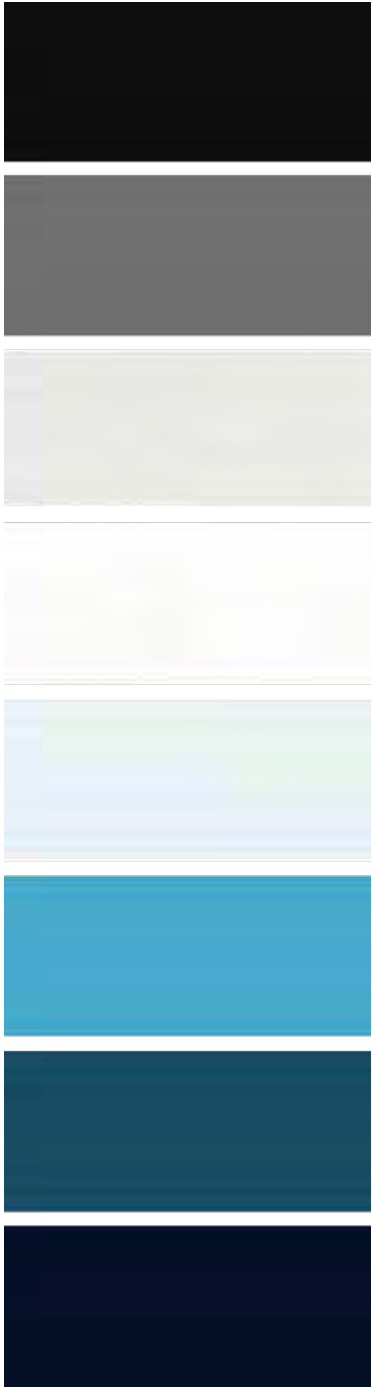
The anatomy of a human is deeply fascinating and beautiful in many ways. X-rays thoroughly examine skeletal structures and aid in the understanding of what makes up each unique bone structure. This concept derives from this basis, producing a modern collection using anatomy for detail, silhouette and colour inspiration. The emphasis is in the detail of each garment, which nods to anatomy in many ways.

FABRICATION //



- Fabric (from top to bottom):
- Pure silk taffeta
 - Double sided satin
 - Poly organza
 - Crepe georgette
 - Organza
 - Regal silk
 - Pure denim
 - Pure new wool suiting universal
 - Premium 100% wool suiting
 - 100& merino wool suiting
 - Wool venetian
 - Stretch poplin
 - Cotton poplin plain
 - Cow hide
 - Lamb nappa

COLOUR //





OUTFIT 01

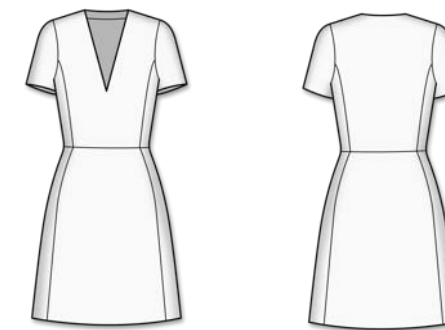


OUTFIT 02



OUTFIT 03

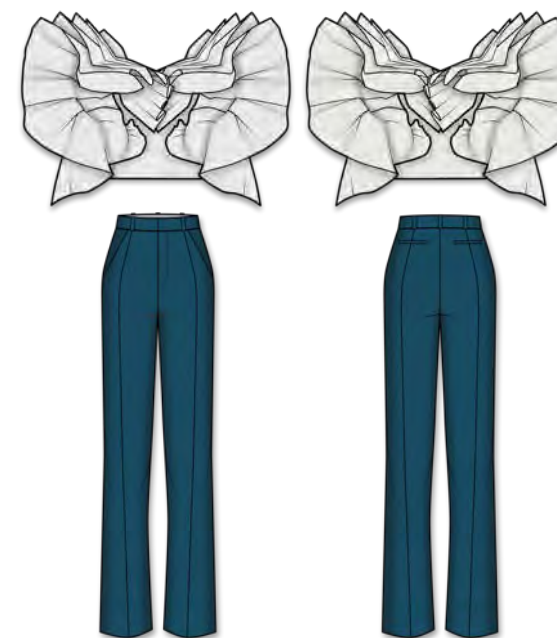
OUTFIT 01



OUTFIT 02



OUTFIT 03



FABRIC MANIPULATION



**FABRIC
MANIPULATION**



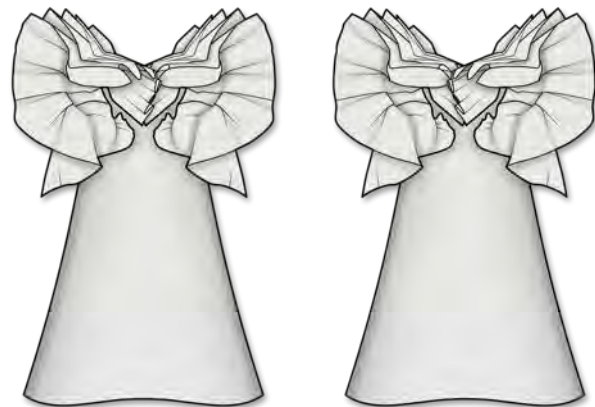
OUTFIT 04



OUTFIT 05



OUTFIT 06



OUTFIT 04



OUTFIT 05



OUTFIT 06



OUTFIT 07



OUTFIT 08

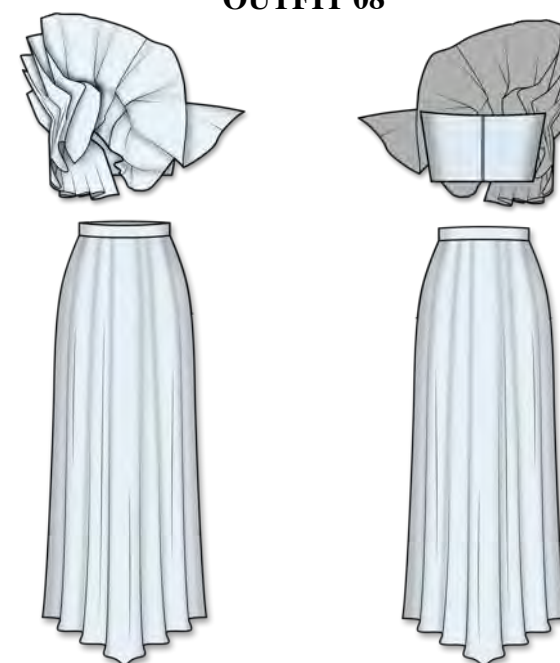


OUTFIT 09

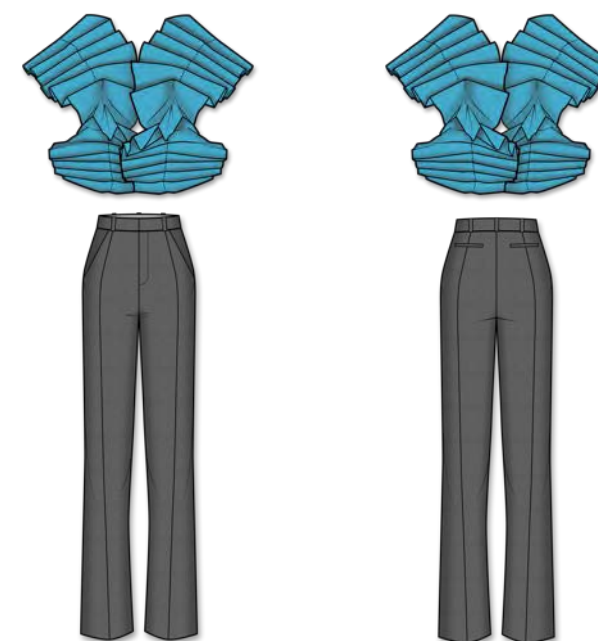
OUTFIT 07



OUTFIT 08



OUTFIT 09



FABRIC MANIPULATION

