

CHEYENNE STRATHMANN

BA(HONS) FASHION TEXTILES
UNIVERSITY OF THE WEST OF ENGLAND

SPECIALIZED IN CREATIVE PATTERN CUTTING AND UNISEX FASHION

dmc-cheyennestrathmann@gmx.de

07306166144

<https://janine2strathmann.myportfolio.com>

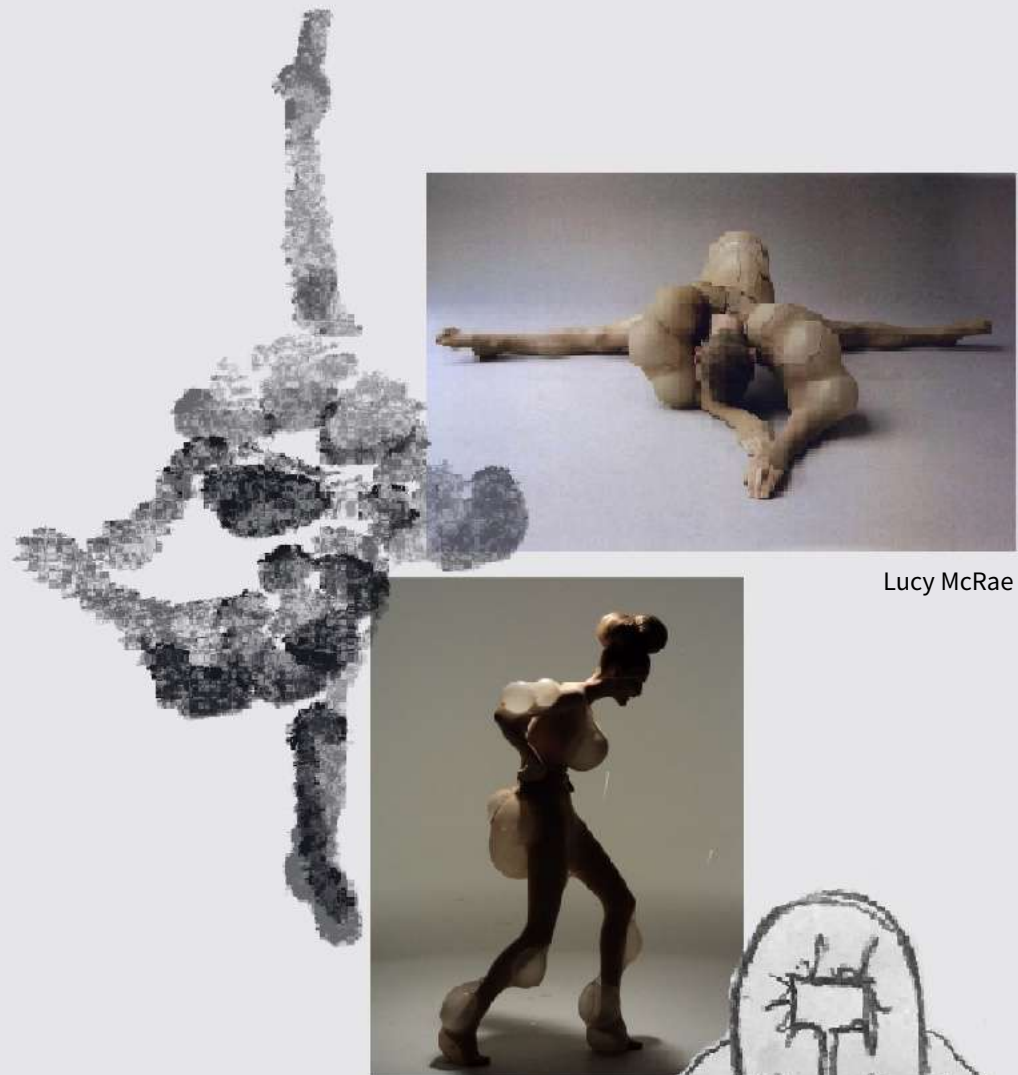
Between Isolation, Exploration and the Unknown

Prior to the start of the final major project some research about the possibilities of a life in space was undertaken. Over the past years the question of what might happen to our planet in the future and if we will be able to live in space and what will happen to our bodies if we will have to adapt to living in a new space and if we might undertake a devolution.

Moving on from this research the idea arose to take advantage of the current situation and connect the idea of living in space with a life in isolation. Starting of the new research by putting the term space into a different context and try to associate it with the actual space we are currently living in instead of outer space.

Through smaller photo series this collection explores and examines how objects and bodies react to being stuck in a confined and analyze how garments and the human bodies behave in isolation.

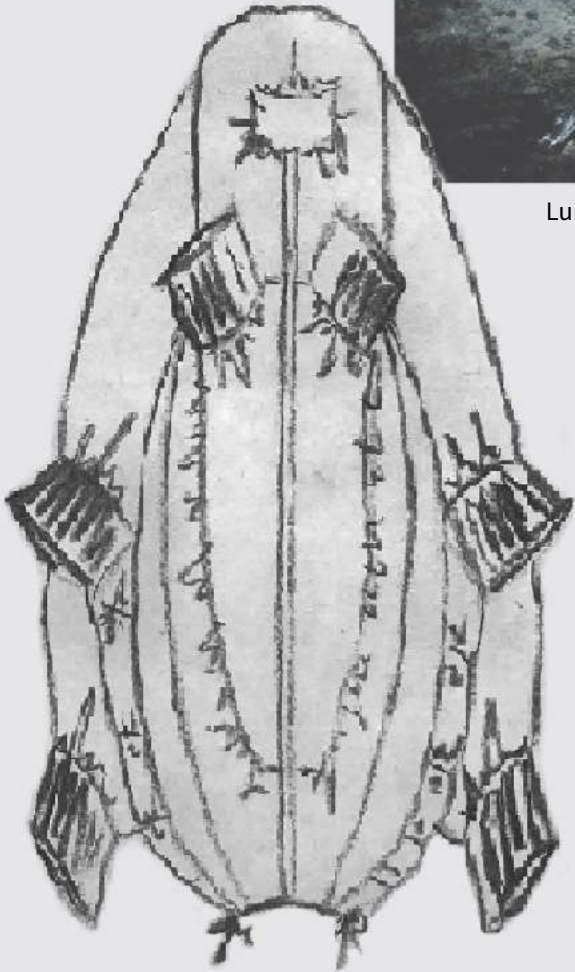
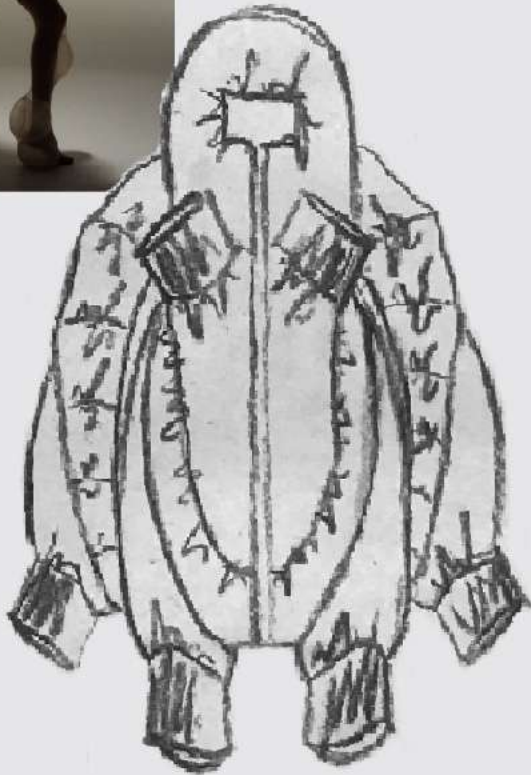
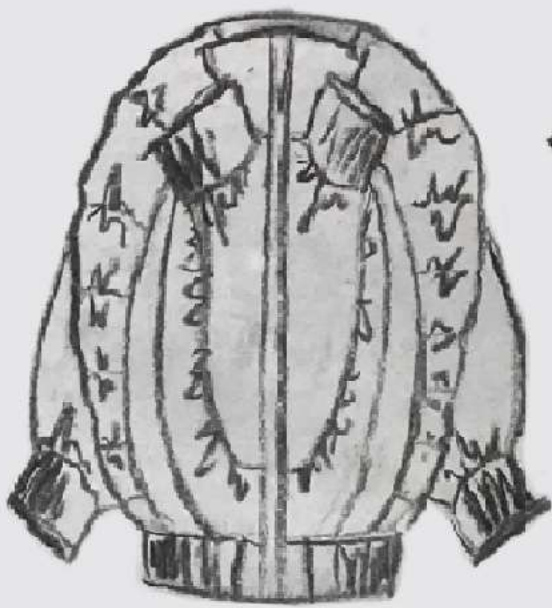
Living in times of a pandemic means being forced to live and work in the same place. It means being trapped and only having a limited access to resources. Innovation and creativity are required to master our daily life and adapt to the new circumstances but this also often means that the well-being of the body is forgotten and it's been but in unusual and uncomfortable positions.



Lucy McRae



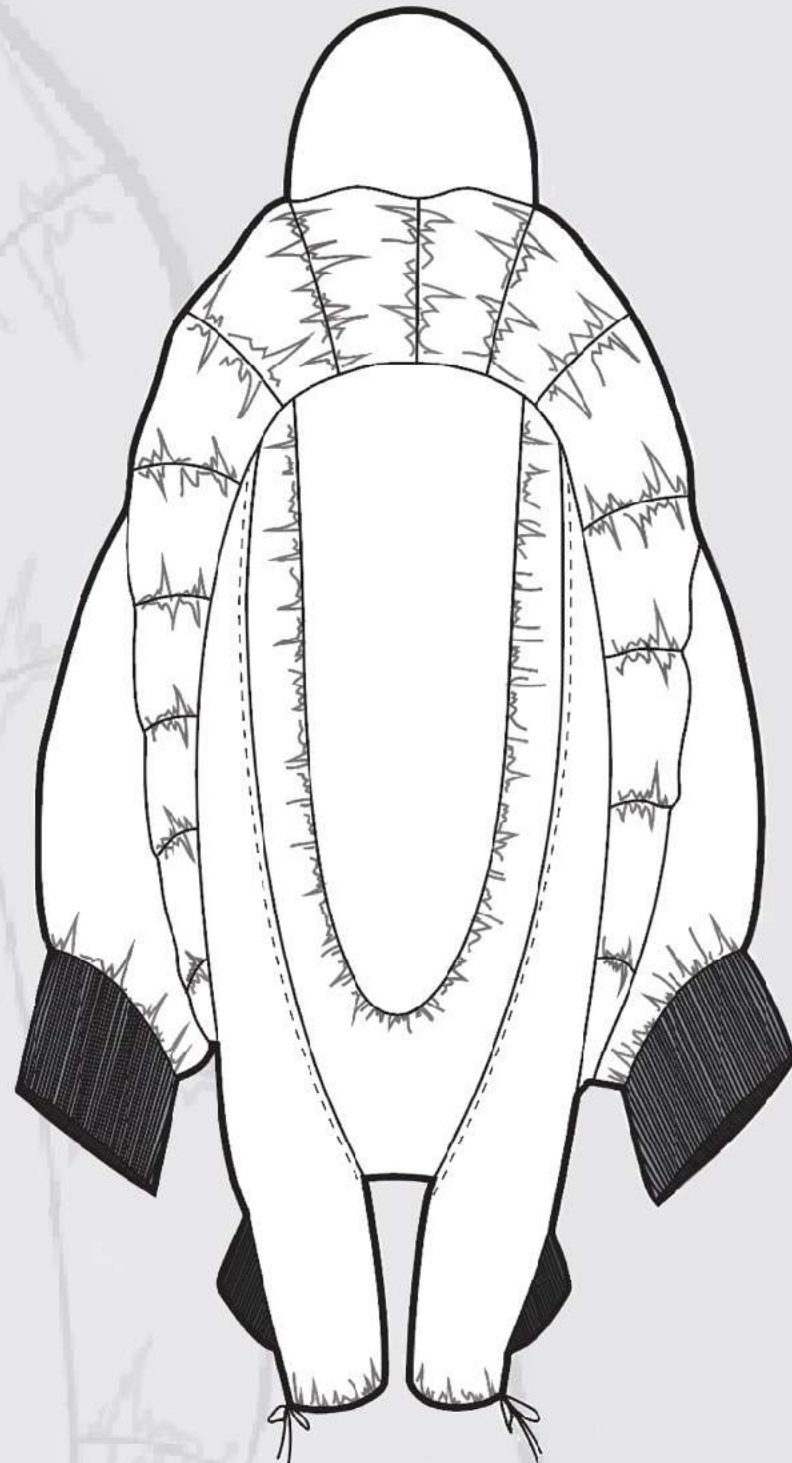
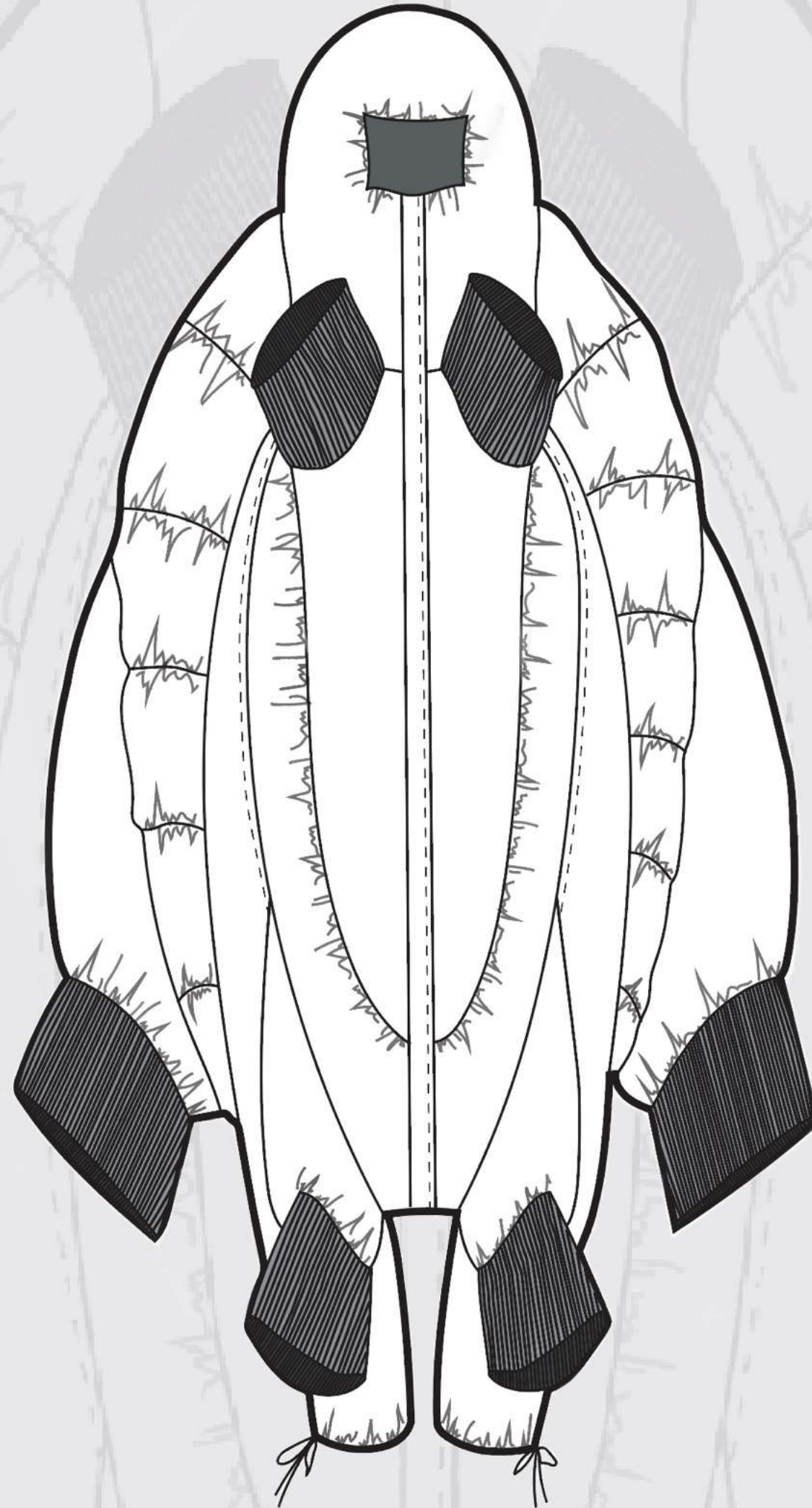
Bart Hess

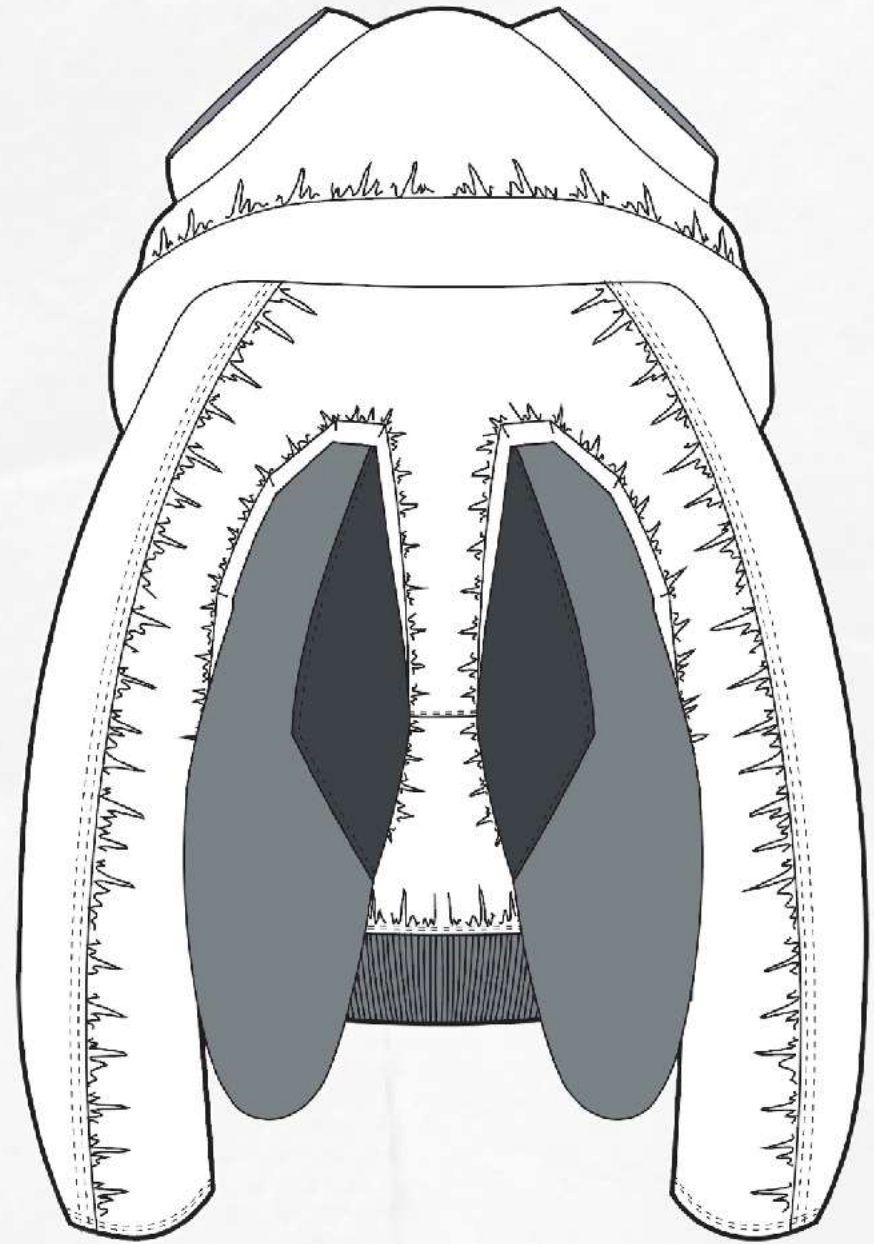
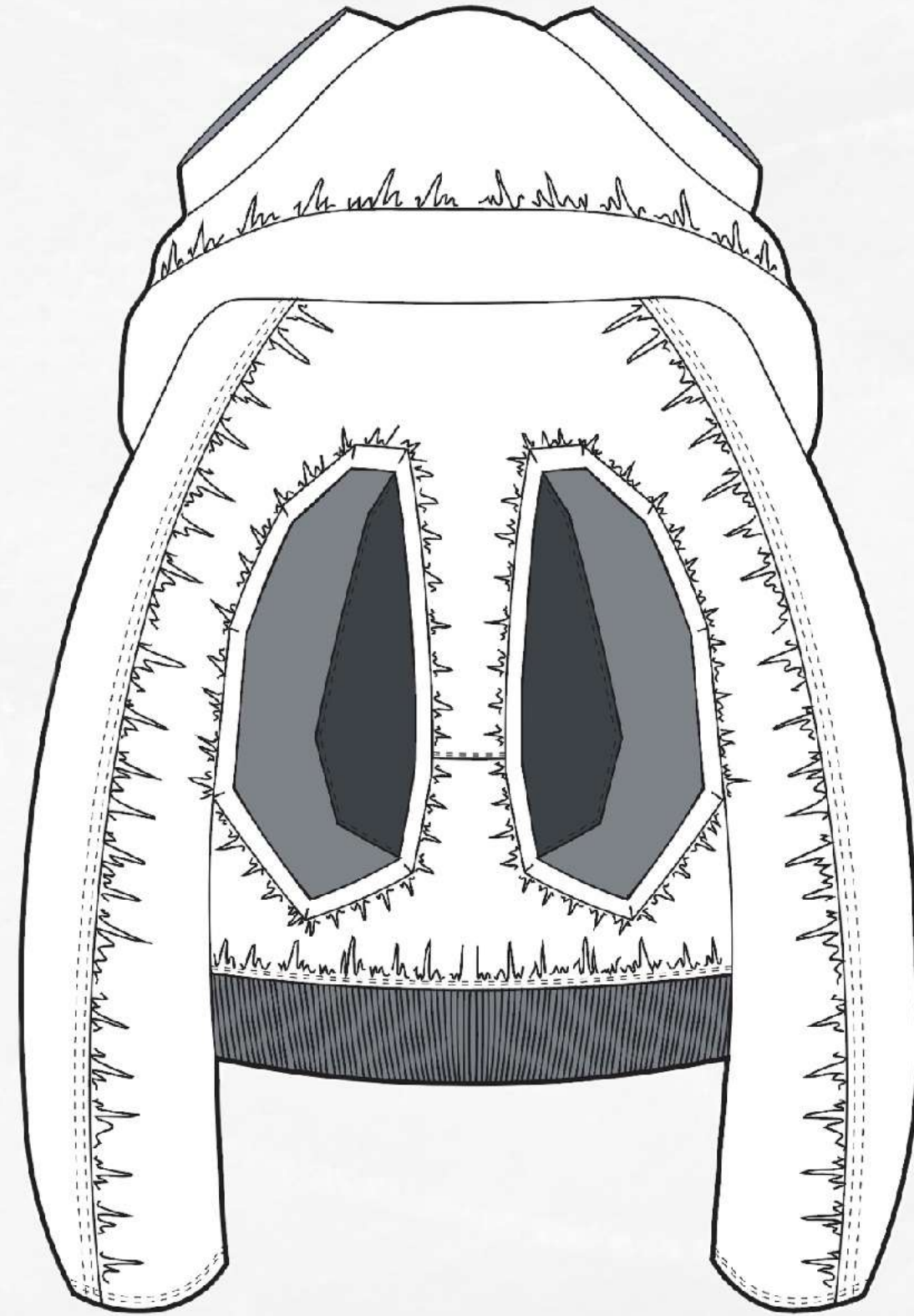


Lunar Living, Foster and Partners



The idea of a life in space became more and more relevant over the past years and especially now with the current situation of the pandemic. Not just the actual idea of a possible life in outer space but also translating the meaning of space into our current situation where most people around the world have to isolate and spent most of their time in a small space only having limited access to materials. We currently find ourselves in a situation similar to what an actual life in space would look like, especially in the beginning until we would have adapted to the new circumstances on the planet. We have to wear masks at the moment to protect ourselves and others. We also try to create space around us to keep our distance to other people in order to stay safe and at the same time use our homes as a form of protection where we can hide.





Isolation and confined spaces. When our safe spaces our homes suddenly start to feel like a cage that we're trapped in and can't escape no matter how hard we try. When spaces that have felt spacious before and provided us with comfort after a long day of work start to enclose themselves and we feel like being stuck in a confined space. Over the past year we had to face significant changes and restrictions in our lifestyles. With being forced to stay in isolation as much as possible we had to adapt to new ways of living and working. With the majority of us having to work from home we had to think about new ways to set up our work spaces in the most efficient way to be able to still meet the work requirements but also not forgetting about our personal life outside of work and letting the work control our entire day. Recourses and spaces are limited these days. While some people might be lucky to have enough space to set up proper studios and offices the majority of us finds themselves sitting hunched back in front of the computer crammed into the last free corner, complaining about back pain and aches after starting to move again after a long day of just sitting in one place. Others might as well find themselves sitting on the floor working hard on the next project running around in their confined space because the desk is not big enough to fit all the material on it. We still travel several miles per day and go on a journey but within our confined spaces. We fold and unfold ourselves and our working tools to have everything we need for this new way of living at reach while we undertake unusual seating positions.

Yoga Trevor



Arkadiusz Branicki



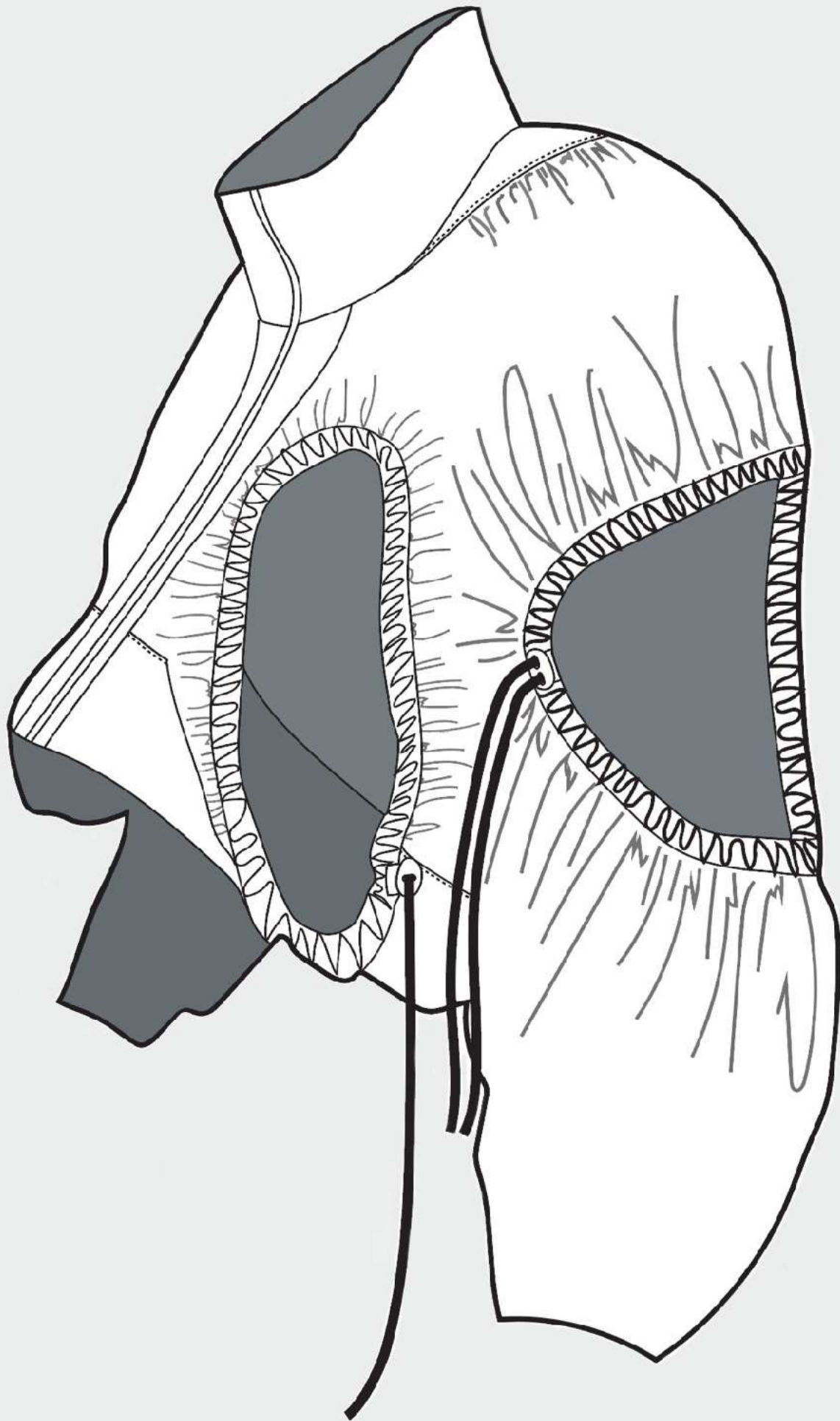
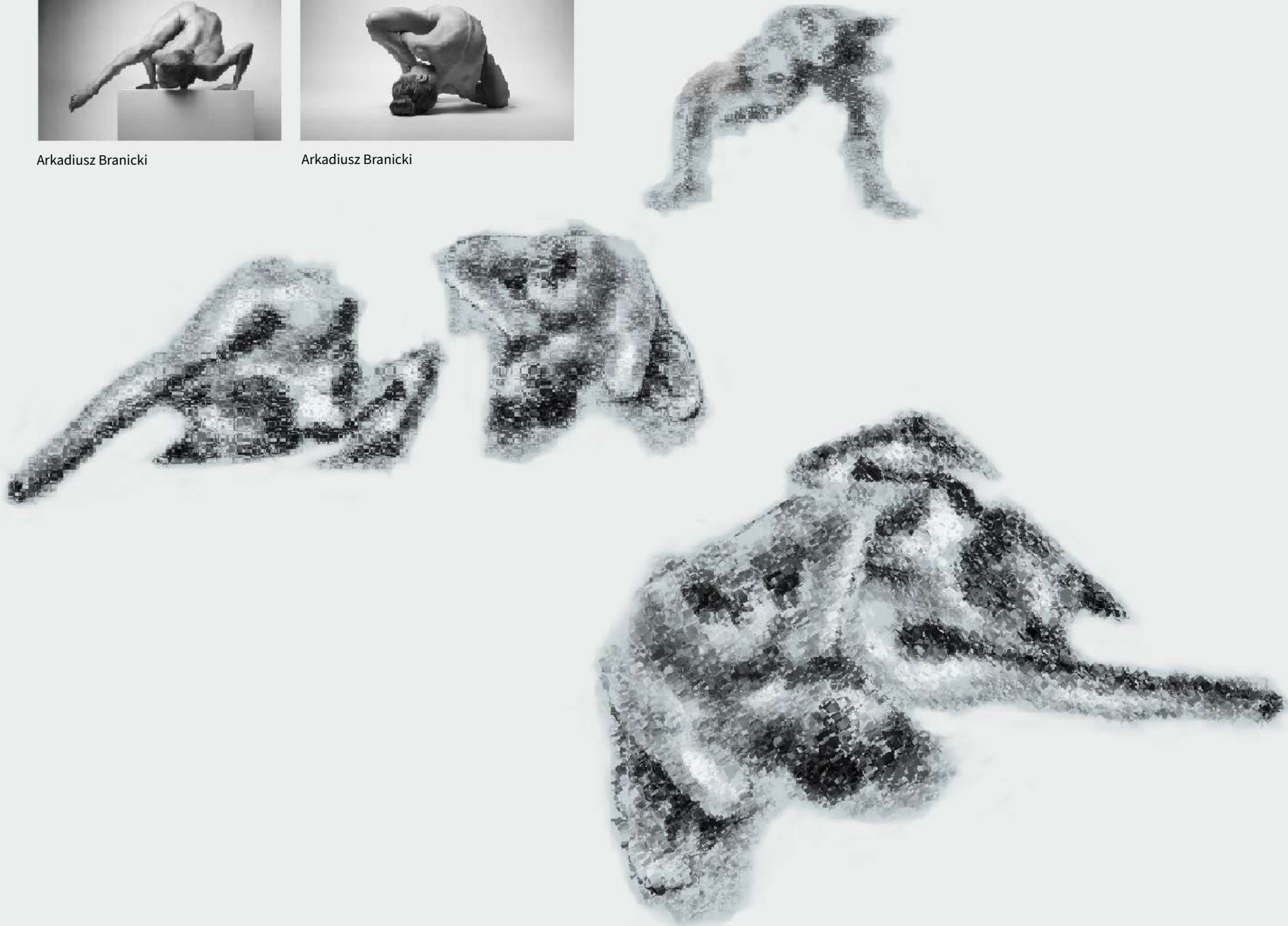
Arkadiusz Branicki



Arkadiusz Branicki



Evelyn Bencicova





Nazar Bilyk
The Borders of Space



Nazar Bilyk
The Borders of Space

- objects in isolation / confined spaces
 - putting objects that we associate with comfort during isolation e.g. duvet and pillow jacket into a confined space to see how they respond to limited space and movement
 - analyzing how their shapes are being distorted before translating this into the human body
 - taking pictures and using these images for collages on the mannequin to inform first ideas for silhouettes and placement for folds or gathering
 - working with organic lines and shapes in association of seeking for comfort during these tough times as well as imitating the round curly forms of the isolated objects





- our body goes through different throughout the day
 - we fold and unfold ourselves within our improvised work spaces
 - our upper body appears to have gained more volume due to pulling our shoulders up and kind of curling ourselves together
 - the legs appear to be shorter



Klattermusen
Hood-Fastening System



Late 1990s/ Early 2000s Final Home Garments

- looking at outerwear and analyze how zippers and drawstrings have been used to give the garment a function
 - adding multiple zippers to a garment to use them as an opening for pockets
 - ⇒ they were used to hide what's laying on the inside
- drawstrings were used to tighten the hood
 - making garments transformable and weather resistant by introducing gathering methods or elastic



- the technique used in the samples could be used to inform the shape of a pocket
 - a bag pouch could be added to the inside of the hole
 - therefore, if the drawstrings will be loosened, the bag pouch would add some extra volume to the garment or if it would be fully tightened things could be hidden inside (functionality)



- a deformed body has special needs
- it is required that the garments can adapt to these
- bendable areas such as knees, shoulders and elbows need to be taken into consideration when designing
 - these areas require extra space for movement because in a confined space they will be bound more often and over a long period of time
 - ⇒ high level of comfort is required
- in order to not make the garments impractical for our normal daily life, they need to be transformable
 - adjustable elements
 - ⇒ high level of functionality



DZHUS



DZHUS

designs with an unusual high neckline to imitate the way we often pull our shoulders up and bend forward when working in an uncomfortable position



Japanese Snowcoats



Emil Alzamora

- artists who work around the idea of a deformed body (the body in a confined space or within a limited space)
- traditional Japanese snow coats to inform silhouette and volume (garments as a shelter)

Trapped, Adapt, Resume

• the round shaped holes symbolize our daily routines (lifecycle)

→ due to the lockdowns our routines kept repeating

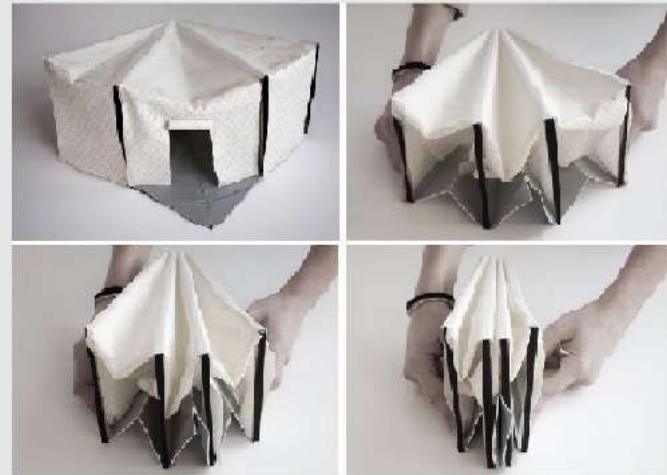
→ we had to get out of our old routines and habits and had to adapt to new circumstances and a new way of living

→ now with being in isolation we are trapped in our homes and have lost track of time

⇒ pulling the drawstrings symbolizes what being stuck inside feels like

⇒ we try to break out of this situation but the events keep happening (ongoing lockdowns)

Portable Homes



• taking inspiration from the building techniques for portable homes for homeless people

→ garments as a safe place
→ garments as a shelter
→ escapism



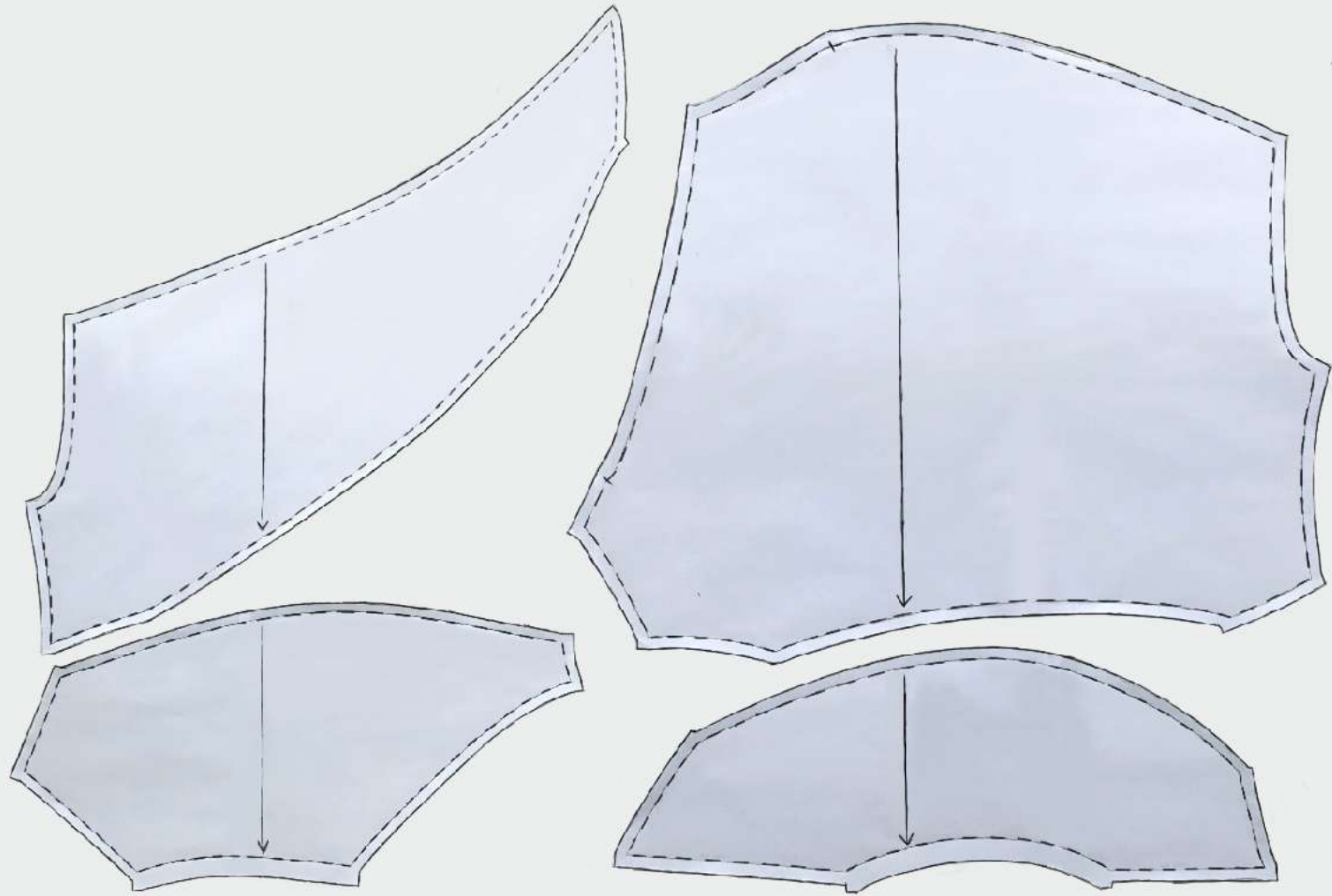
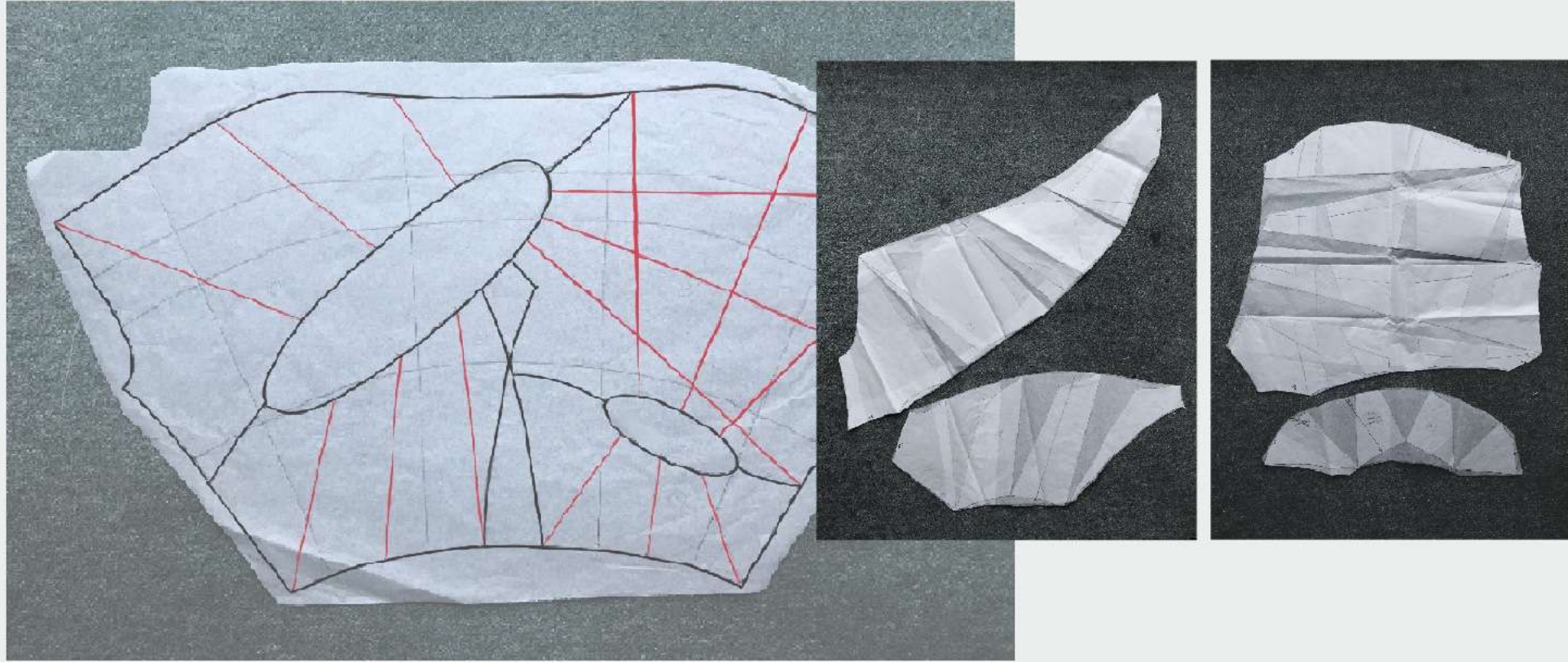
Japanese Snowcoat

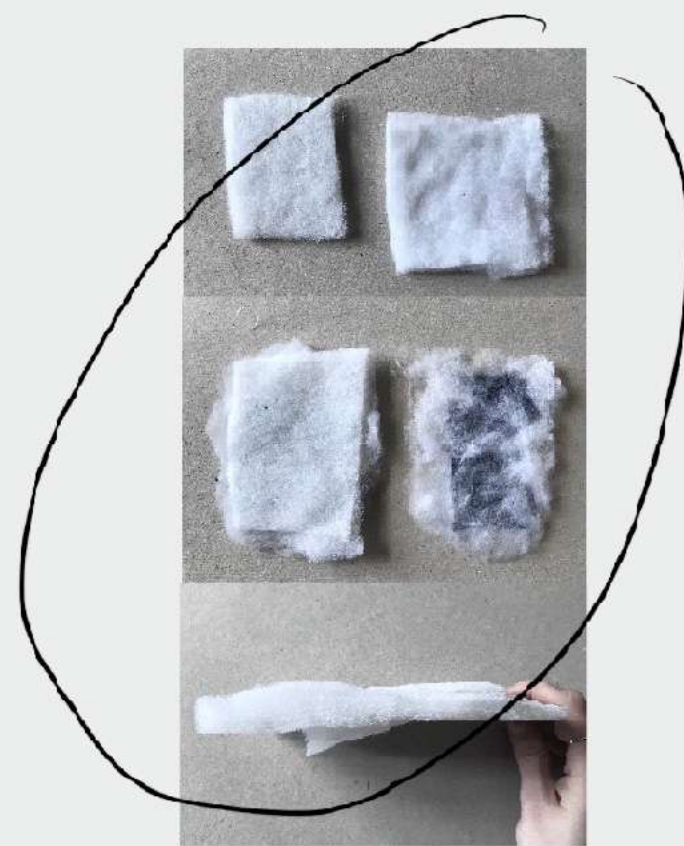


Schiaparelli AW21









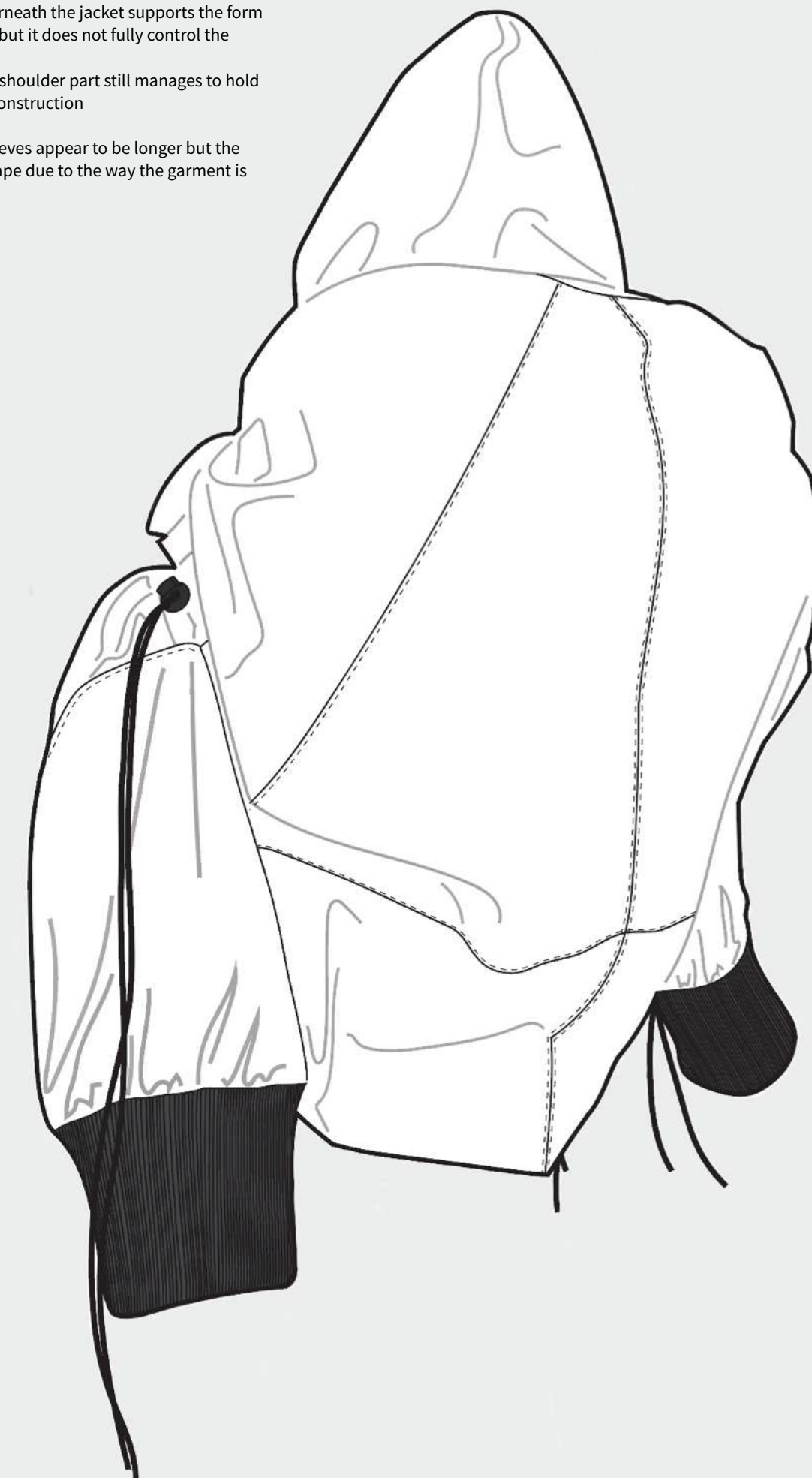
small samples / experiments
to test a method to create
the padded yoke which
will go underneath the
jacket

- layering several
pieces of wadding then
using the iron to steam
them
- they became flat
and stiff depending
on how much steam
is added
- trying out different
types of wadding to
see which creates the best
result

Referring to the primary research about construction and confined spaces

~~~~> The padded yoke i added underneath the jacket supports the form  
and holds the shoulder part up but it does not fully control the  
shape;  
As it can be seen on the left the shoulder part still manages to hold  
its shape because of the good construction

~~~~> The shoulders drop and the sleeves appear to be longer but the  
shoulder part still holds the shape due to the way the garment is
constructed



Oversized Parka with adjustable pouches

- ~~~~> The drawstrings make the parka multifunctional, they can be adjusted to achieve the desired volume and length
- ~~~~> It is a unisex parka which can be worn by many different body types due to the adjustable silhouette and volume
- ~~~~> The pouches in the slits can be kept on the inside to create the look of a pocket or pulled on the outside to enhance the silhouette and add some additional volume
- ~~~~> It acts as a shelter/ safe space when loosen the drawstrings but will still be practical for the everyday life because the silhouette can be tightened



