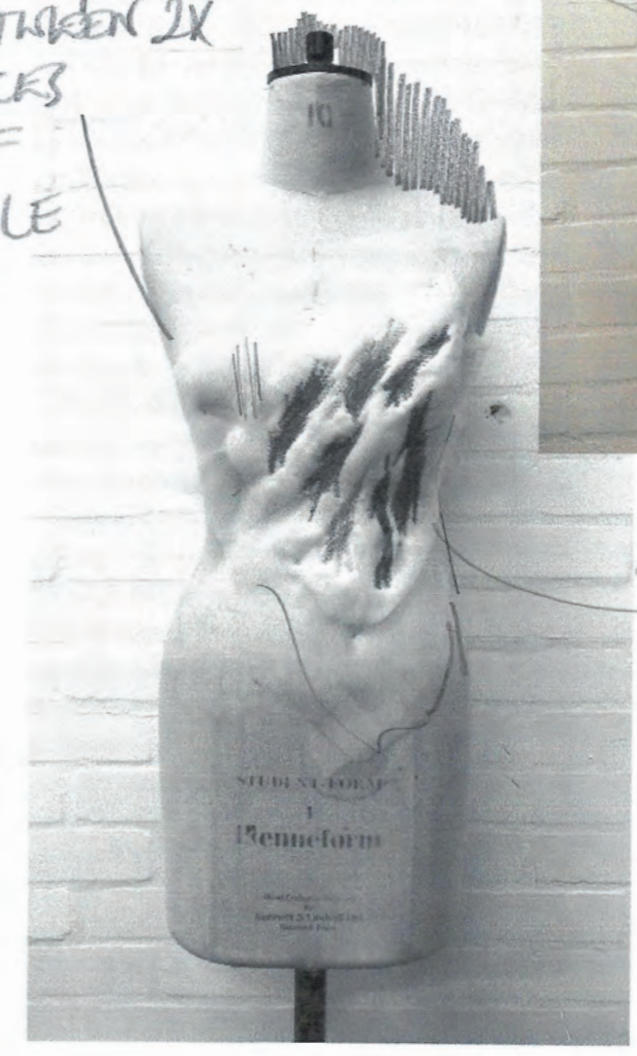


WADDING SETTED
IN TWO PIECES
OF PLASTIC +
EMBROIDERED
WITH ZIG ZAG
STITCH

WADDING EMBROIDERED ?
BETWEEN 2X
PIECES
OF
VOILE

PLACEMENT
OF PADDING

SANDWICHED
BETWEEN
2X DRESSES
LAYERED
TOGETHER

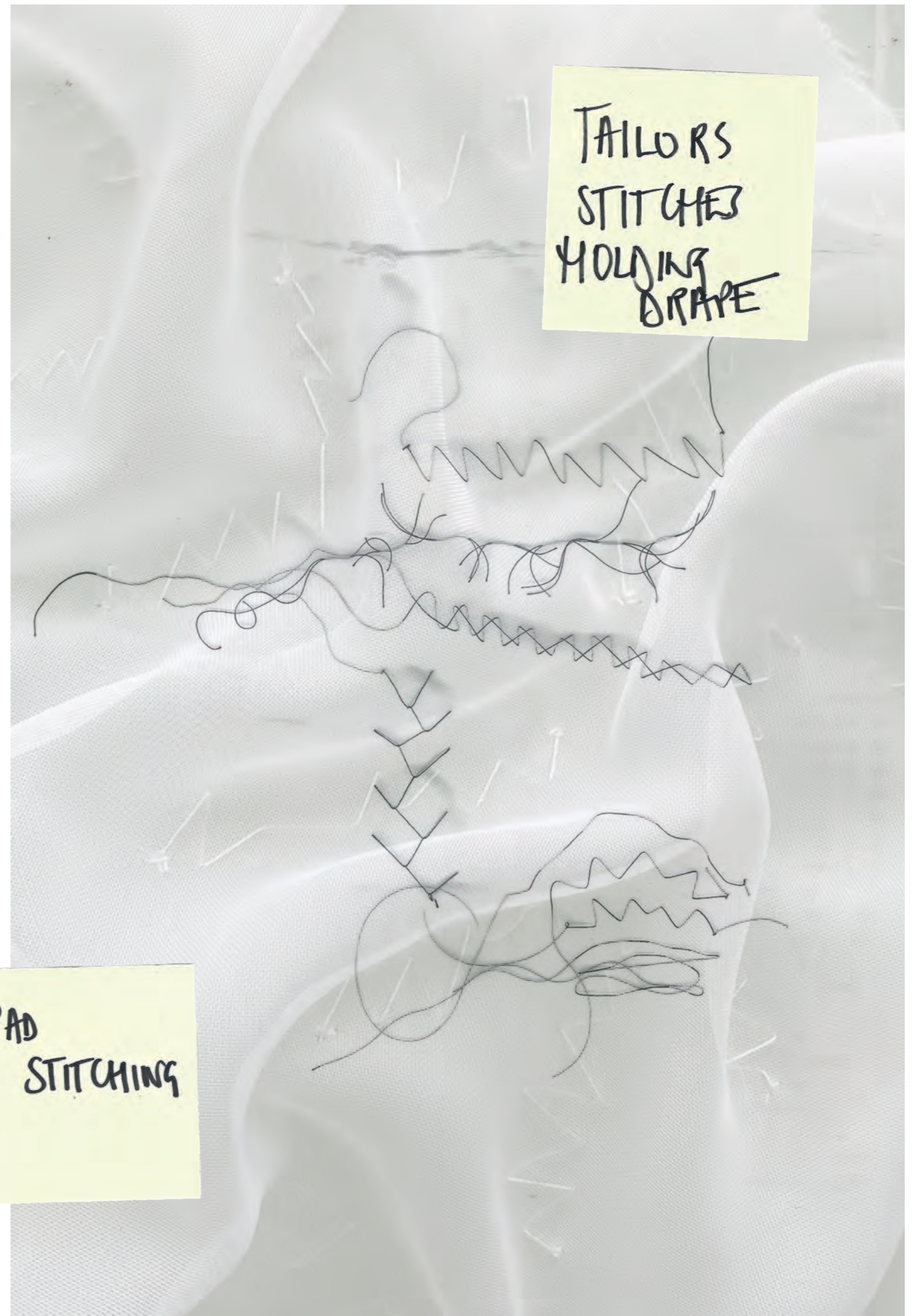


DARKER
EMBROIDERY



DOUBLE
LAYERED →
FRONT
- PANEL ONLY

PAD
STITCHING

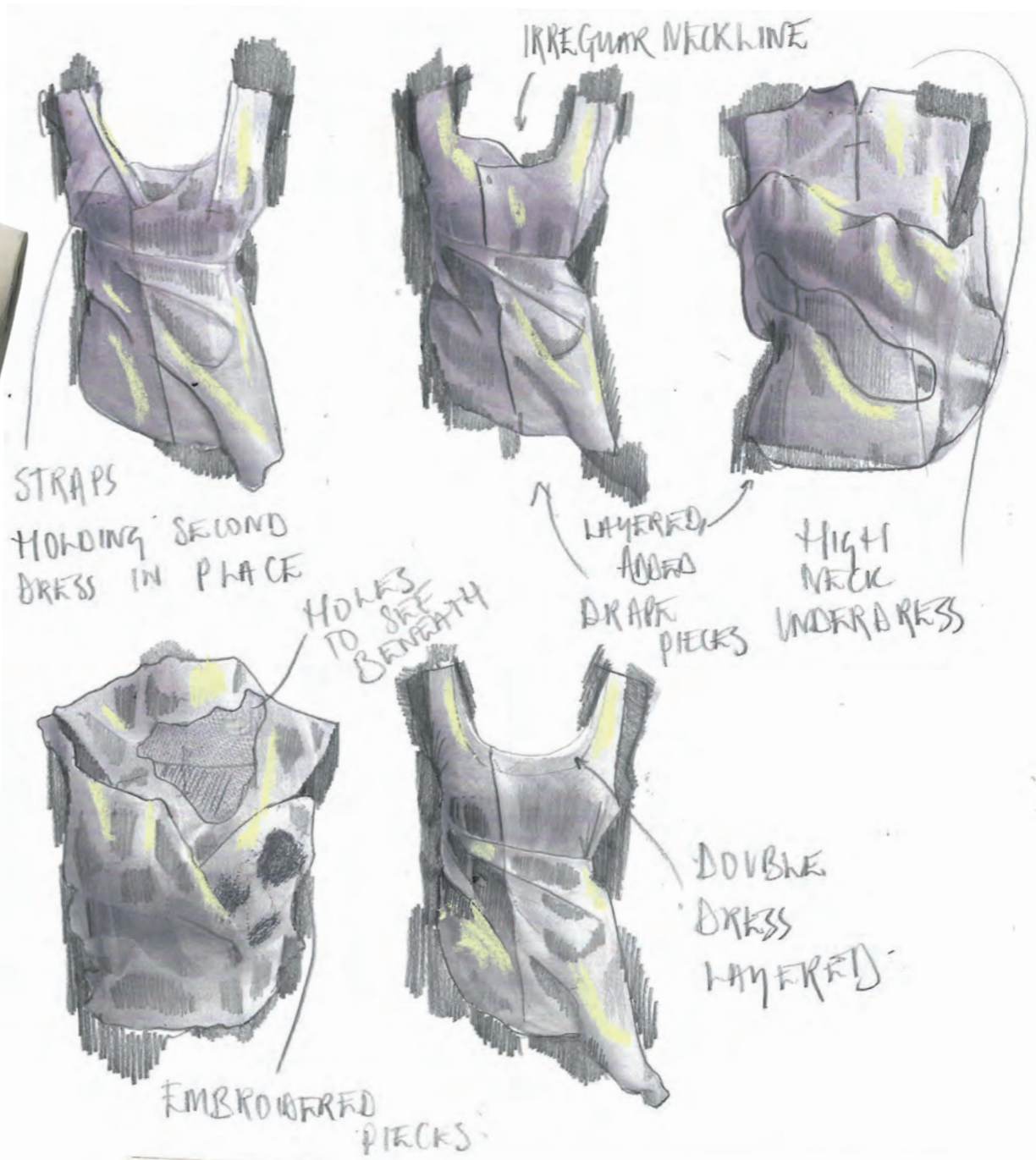


TAILORS
STITCHES
HOLDING
DRAPE

BASIC
DRESS
BLOCK



DRAPED
NYLON OVER
BASIC SHIFT
DRESS



BODICE DRAPE VARIATIONS

DESIGN
DRAWINGS
1



WATERLOOVILLE
PATTERN
VNDER

SAMPLE OF
SHARPES CHECK
ON NYLON

BROKEN
WINDOW,
WATERLOOVILLE

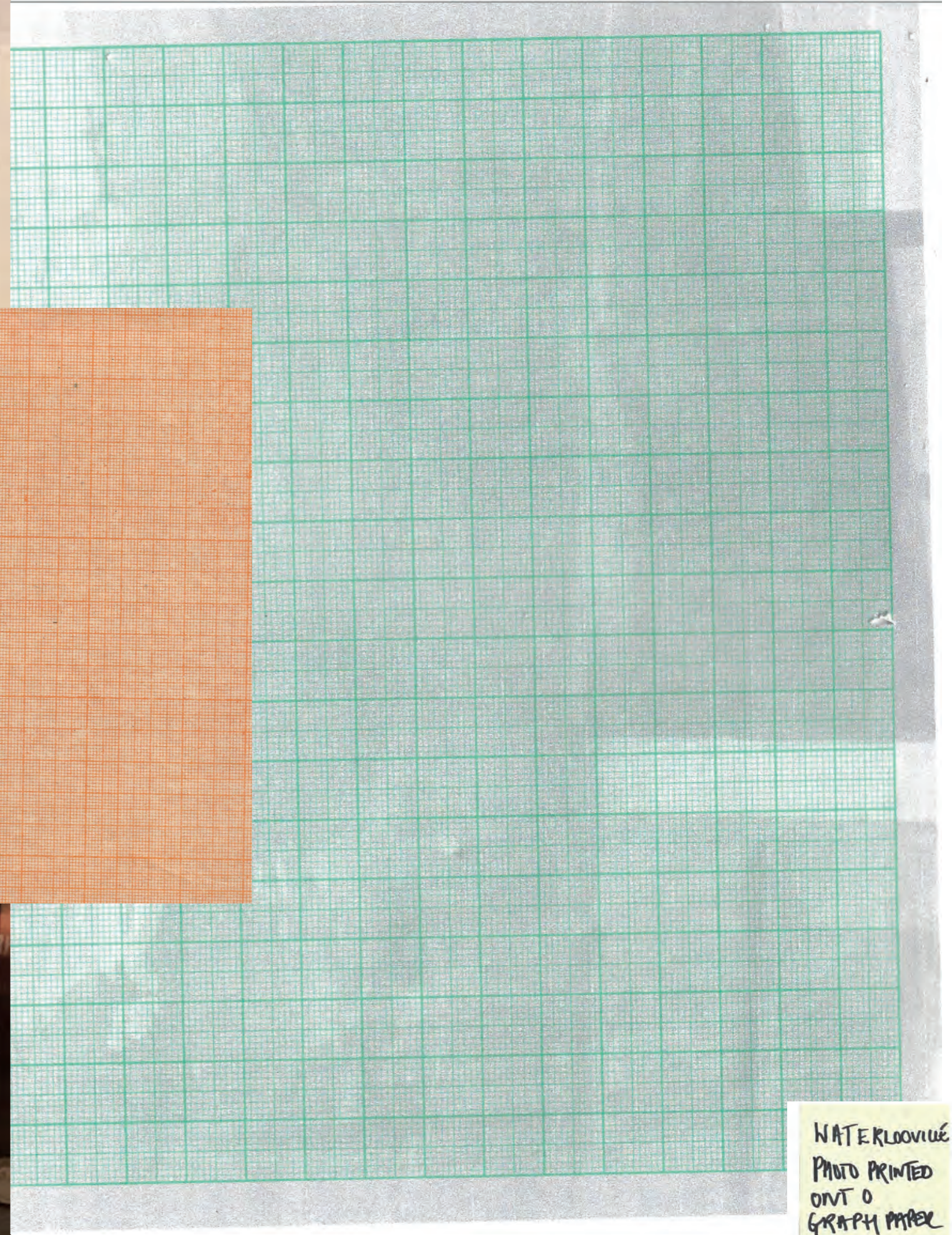
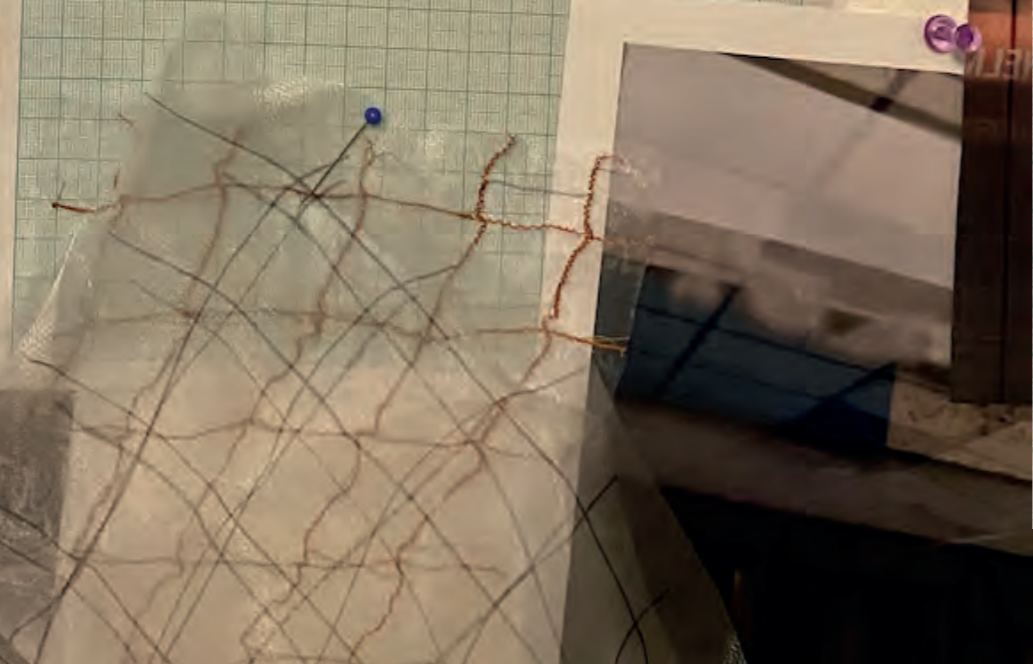
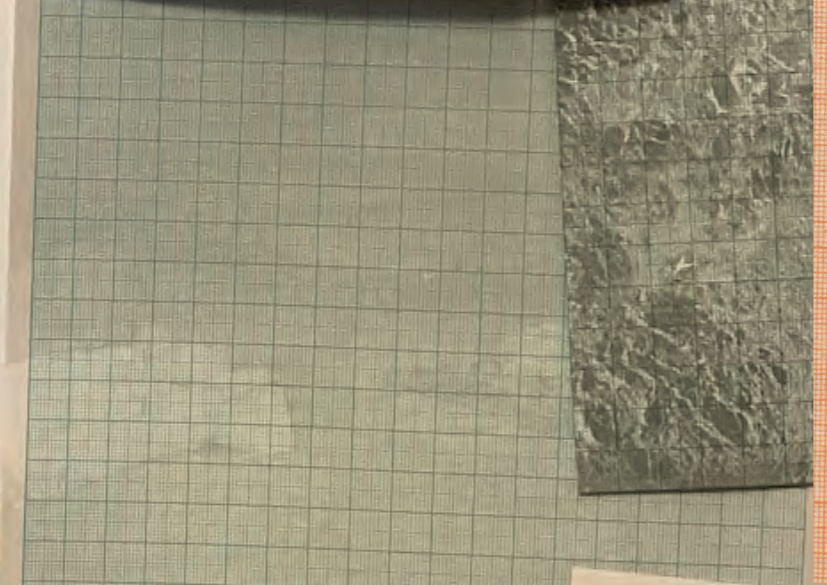
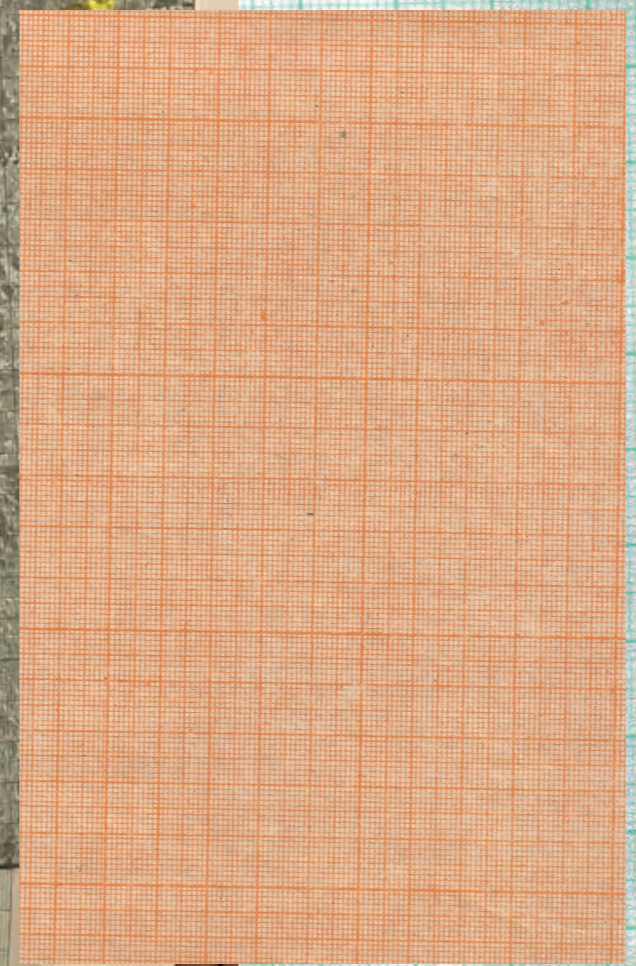
WATERLOOVILLE
PATTERN
PRINTED ONTO
GRAPH PAPER

ARCHIVES
1996-2001

KOSTAS
MURKUDIS

VINTAGE
SOVIET
GRAPH PAPER

Automne-Hiver 1992-93
Book: Martin Margiela Collections Femme 198
2009 (Palais Galliera Paris Musées)



WATERLOOVILLE
PHOTO PRINTED
ONT O
GRAPH PAPER



'PRESERVED'
CLOTHING

HENRICKJE
SCHIMMEL



SILICONE SETS
INTO DRAPE
OF FABRIC
AND TURNED
OVER TO REVEAL

SMOOTH, FLAT
SURFACE.
INK MOTES
DURING PROCESS

FINAL
LINE-UP

LOOK 1

LOOK 2

LOOK 3

LOOK 4

LOOK 5

LOOK 6

WOMENSWEAR
SPRING / SUMMER
22

