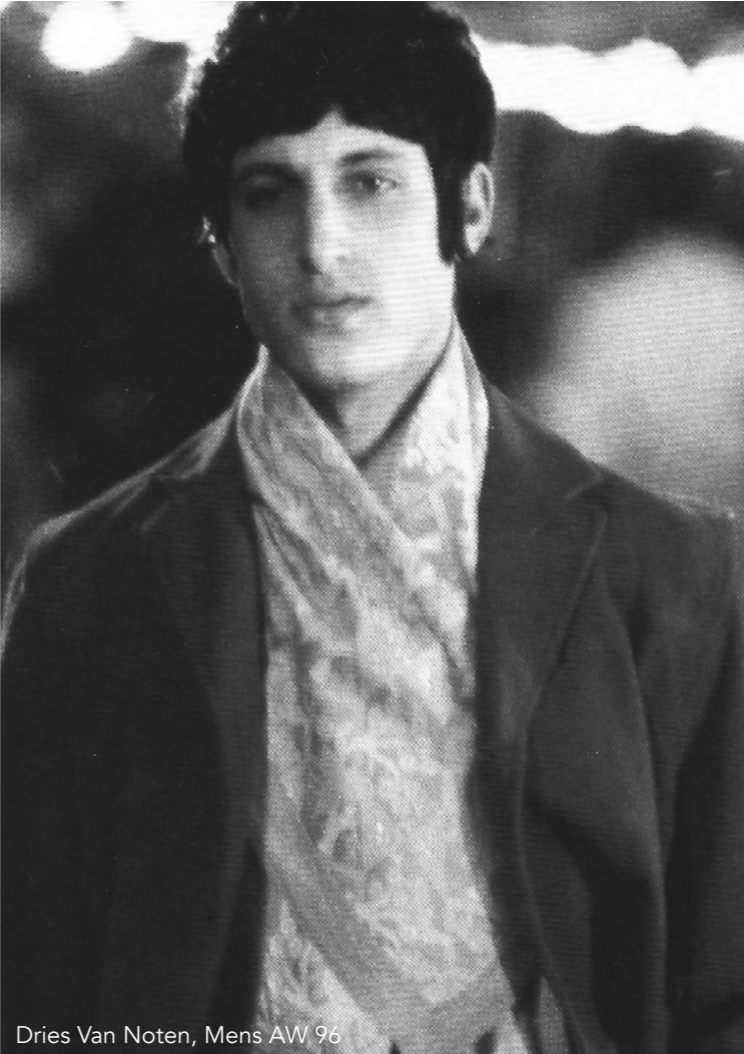


Maximilian Jennings

ARCADIA





Deborah Turbeville, 1975



Jean Muir, 1973



Sonia Rykiel 1970s





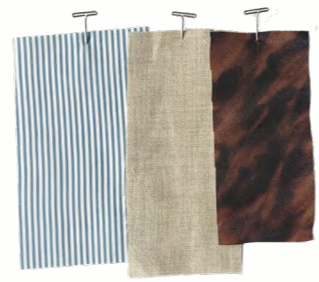
LOOK 1



LOOK 2



LOOK 3



LOOK 4



LOOK 5



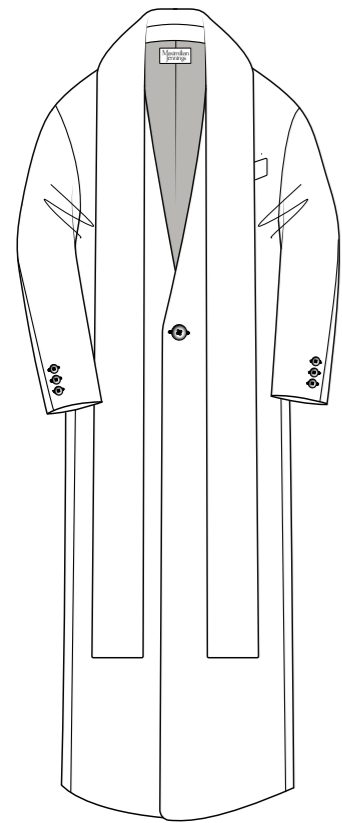
LOOK 6



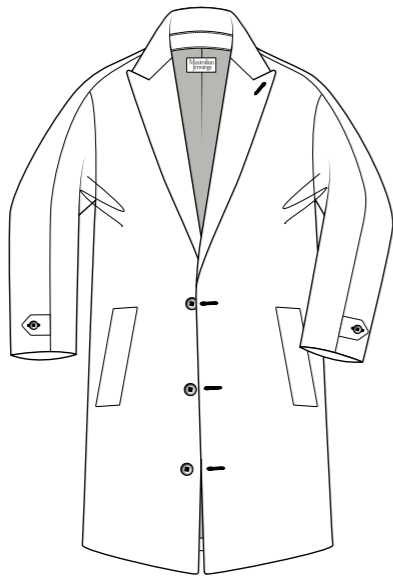
AW22 RANGE PLAN

OUTERWEAR

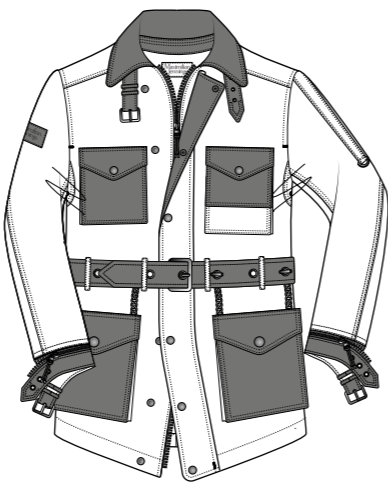
THE PENSELWOOD OVERCOAT.
Scarf lapel shawl collar.
Fully lined.



THE MARLOW OVERCOAT.
Half raglan sleeve. Peak lapel.
Fully lined.



THE ROEDEAN FIELD JACKET.
Detachable hanging bellow pockets.
Zip-off buckled cuffs. Unlined.



KNITWEAR / JERSEY

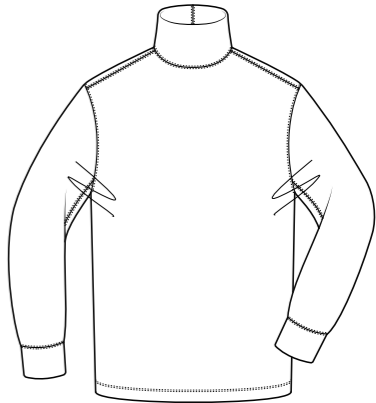
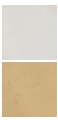
THE RECKITT.
Trompe-l'œil cable knit quilt.
Zipped funnel neck.



THE FRYER.
High neck rib collar.
Buckled v-neck collarpiece.

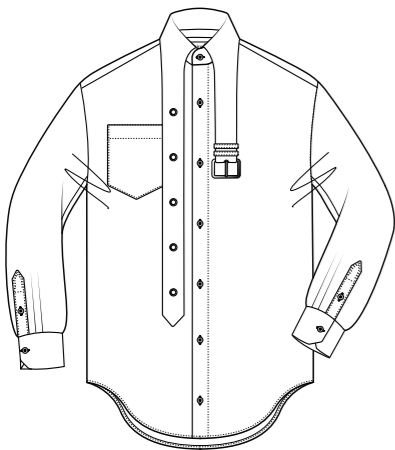


THE WINDSOR.
Fine jersey turtleneck.

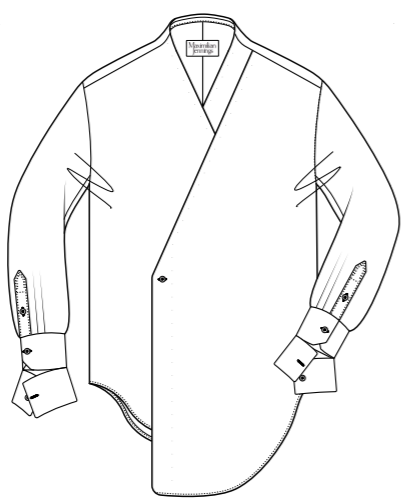


SHIRTS

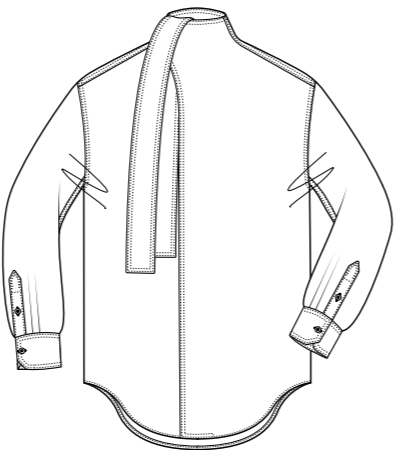
THE COLLINGBORNE.
Buckled extended collar.
Front chest pocket.



THE LEIGHTON.
High neck.
Asymmetrical triple front.

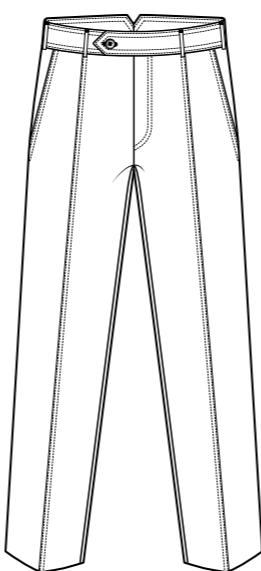


THE STAMFORD.
Double needle topstitch.
High tie neck.

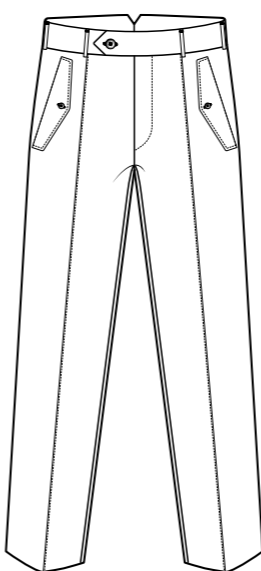


TROUSERS

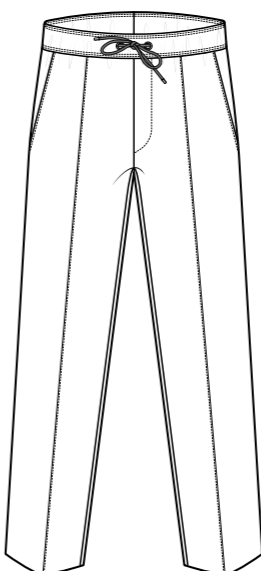
THE LANGTOFT.
Double needle topstitch.



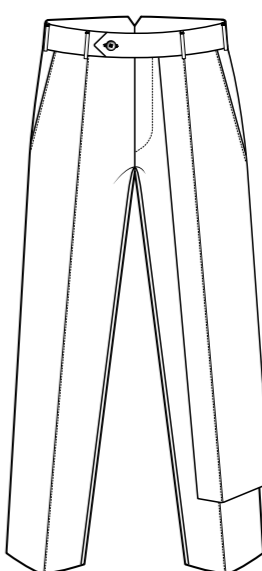
THE OAKHAM.
Pintuck front.
Side welts.



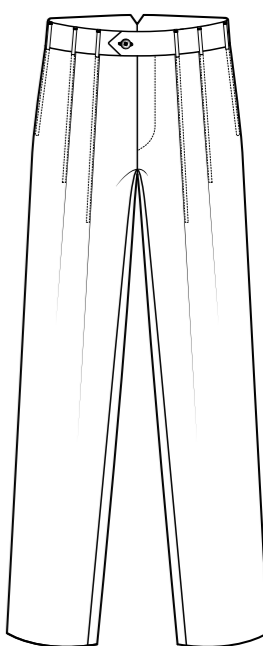
THE TINGRITH.
Leather coulisse waist-band. Pintuck front.



THE SILSOE.
Draped side panel.
Pintuck front.



THE HENLEY.
Relaxed fit. Long leg.
Fully lined.







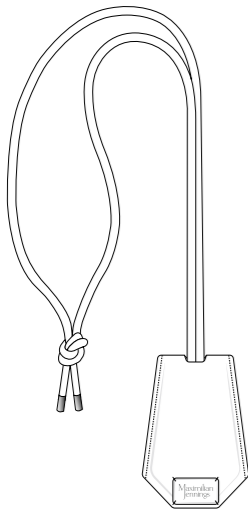


AW22 ACCESSORIES RANGE PLAN

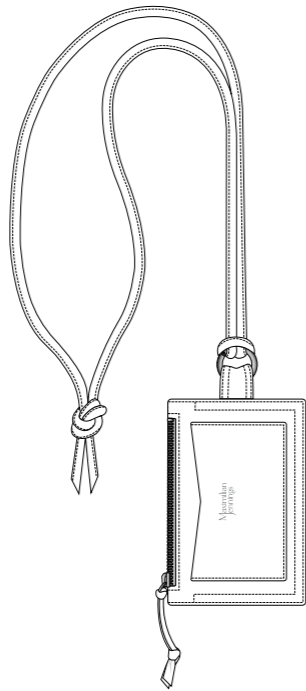
SMALL LEATHER GOODS



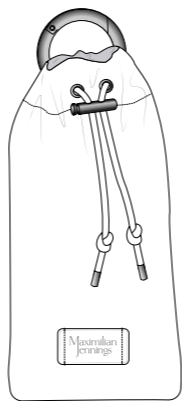
THE PANGBOURNE KEY CLOCHE.
Stitched leather cord lanyard.
Circular caribener for keys.



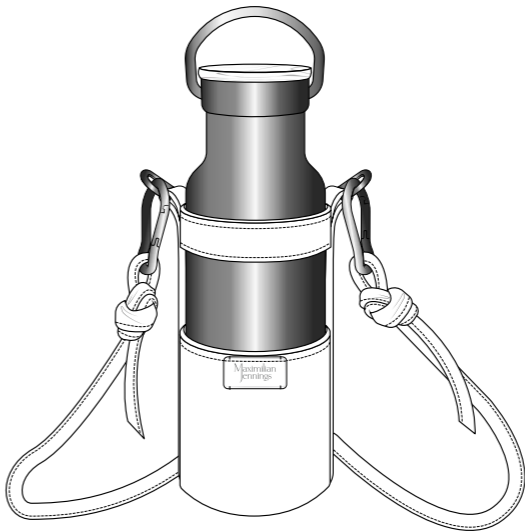
THE HAMBLEDEN CARDHOLDER ON LANYARD.
Circular caribener and leather cord lanyard.
Front card pocket for priority cards.
Zipped interior pocket.



THE SHURLOCK SUNGLASS CASE.
Drawstring pouch.
Fully lined to keep lenses polished.
Caribener clip at rear for attachment to other bags / belt loops.



THE BIX WATER BOTTLE HOLSTER AND STRAP.
Detatchable adjustable crossbody strap.
500ml capacity.



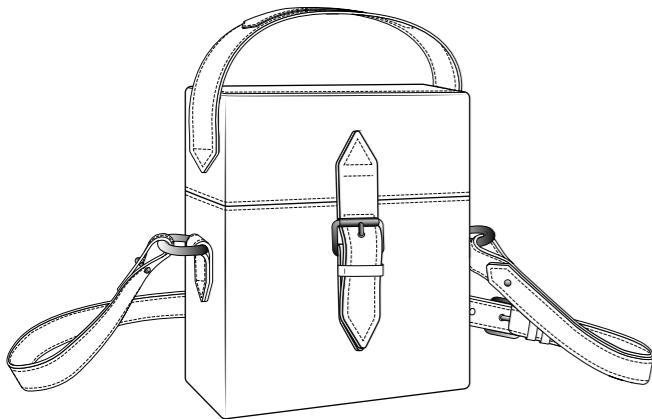
CROSSBODY BAGS

TOTE BAGS

FOOTWEAR

SCARVES

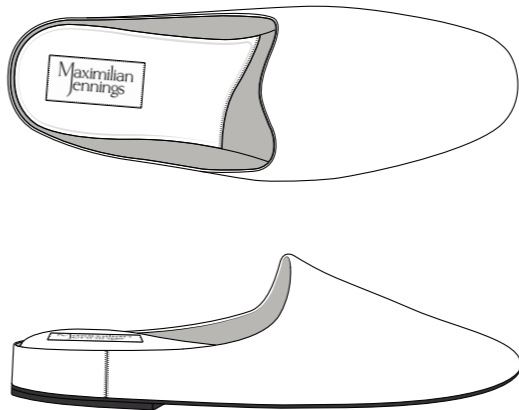
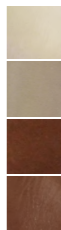
THE LUSCOMBE CROSSBODY BOX BAG.
Detatchable adjustable crossbody strap.
Top handle.
Interior card pocket.
Fully lined.



THE WALTHAM EAST WEST TOTE.
Adjustable buckled strap.
Detatchable crossbody strap.
Interior card pocket.
Fully lined.



THE SHOTTESBROOKE LOAFER.
Backless mule slip on loafer.



THE BRAY SCARF.
Knit and jersey cable knit quilted padded scarf.
Elastic strap to secure.

