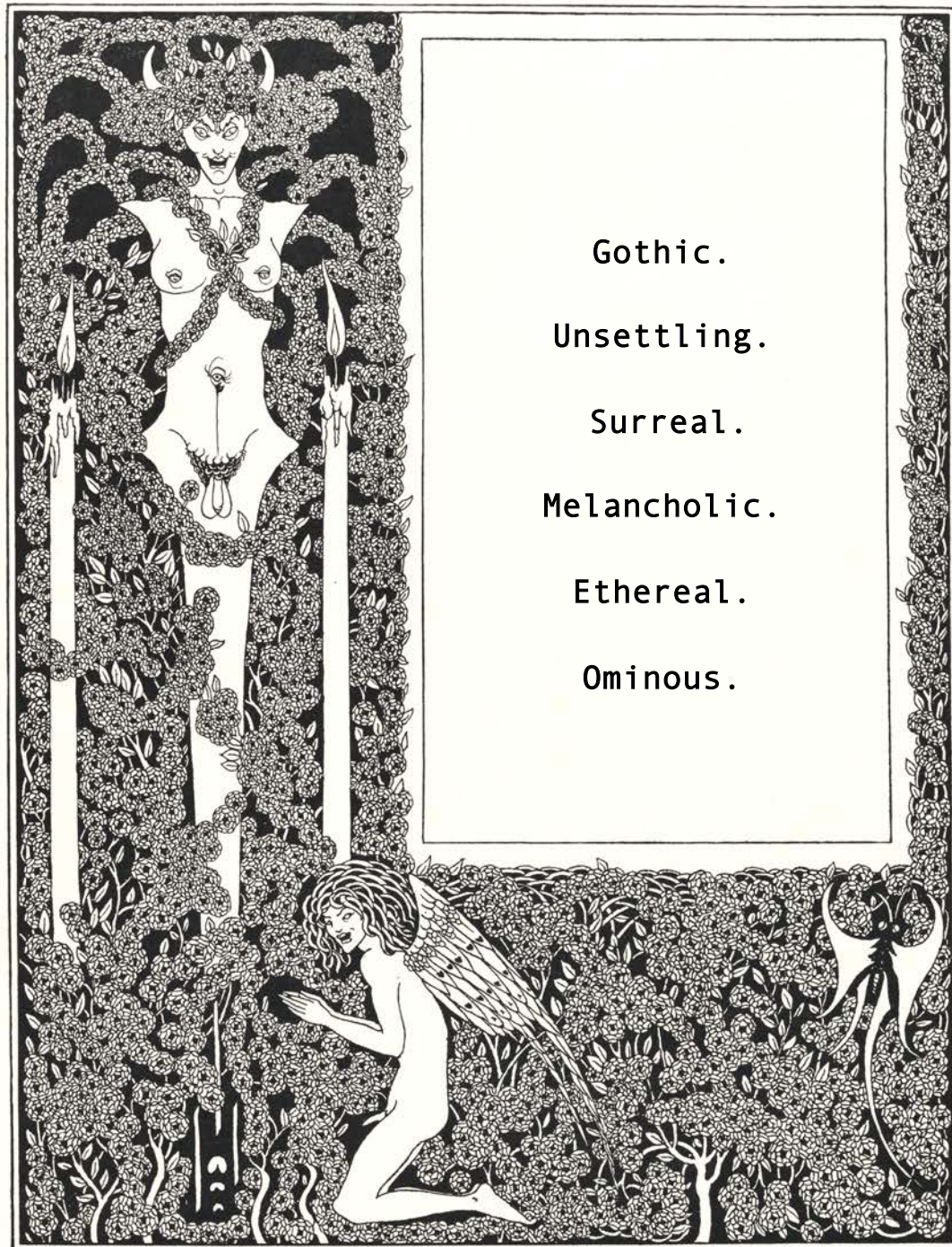


Mood.



Cover illustration for Oscar Wilde's 'Salomé' by Aubrey Beardsley, 1894.

Gothic.  
Unsettling.  
Surreal.  
Melancholic.  
Ethereal.  
Ominous.



Illustration from Arthur Machen's 'Great God Pan' by Aubrey Beardsley.



Gothic Bedchambers - By Kate Montgomery.





Gothic Horror – Traditional Style blurred with embroidered. Voluminous / Surreal Silhouettes – Headpieces.



Top: Illustration for Oscar Wilde's 'Salomé', 'Pillow of Salome', tailpiece by Aubrey Beardsley 1894.

Bottom: Scene from Crimson Peak – Directed by Guillermo Del Toro – 2015.

Furthest left: – Illustration border By Aubrey Beardsley,

Top Left: Illustration from Thomas Malory's 'Le Morte d'Arthur', by Aubrey Beardsley.

Top right: La Dame Aux Camélias – By Aubrey Beardsley, 1894.

Bottom left: Scene from Suspiria – Directed by Dario Argento – 1977.

Bottom right: Grotesque Illustration – By Aubrey Beardsley, 1910.



## Look 1: The Lotus eaters



Motifs:  
Blue/White  
Lotus flowers  
(Surreal/Out of  
Water)

White  
Lilies (Purity)

Forget Me  
Nots (Fading  
Memory)

Drowsy Figures –  
Surrounded by  
plants and legs  
bound in vine

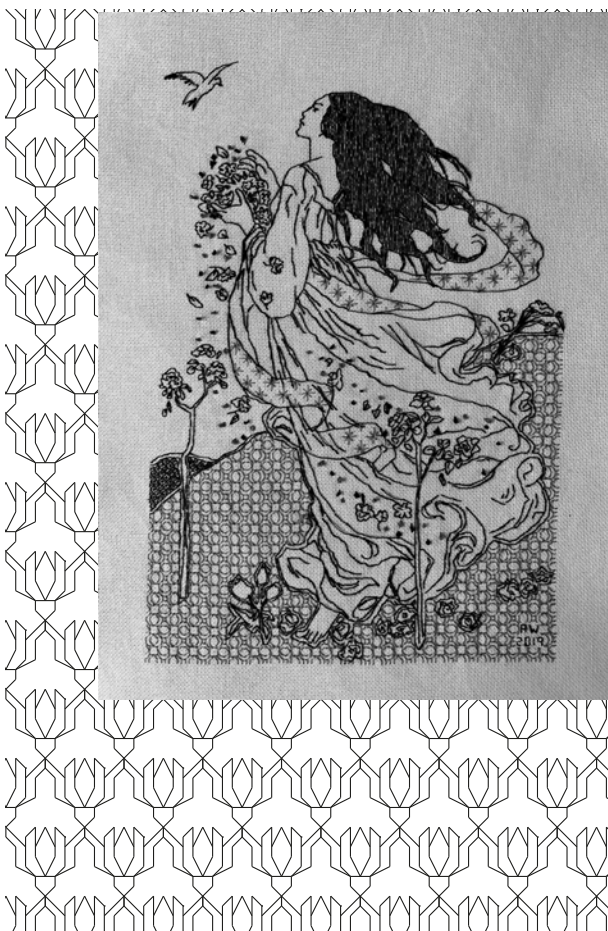
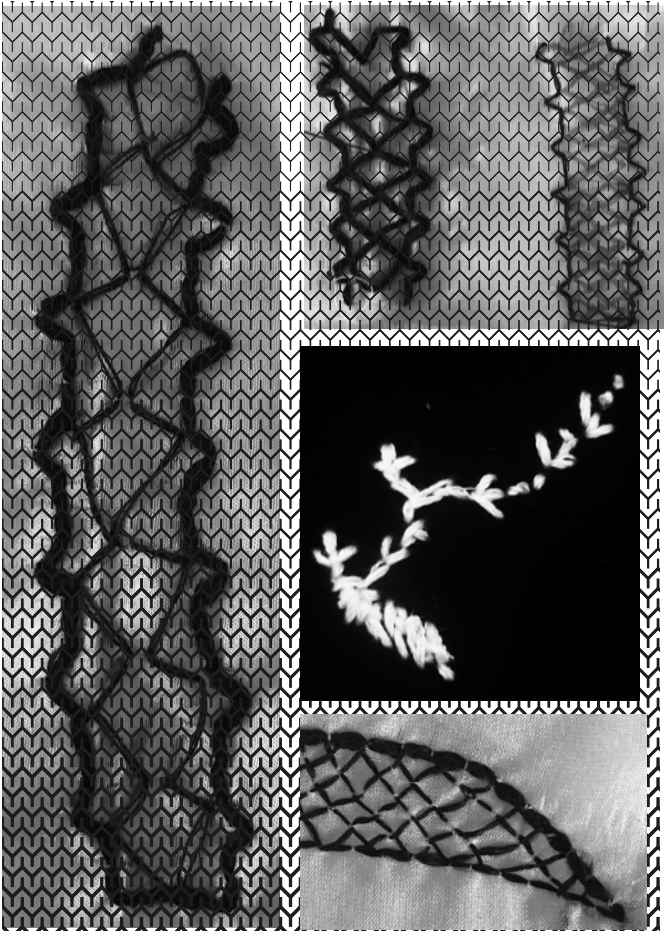
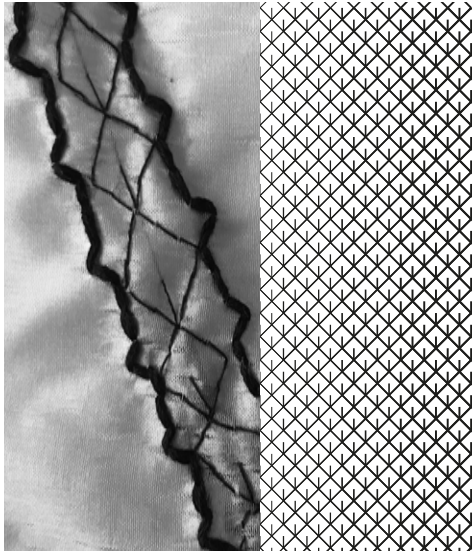
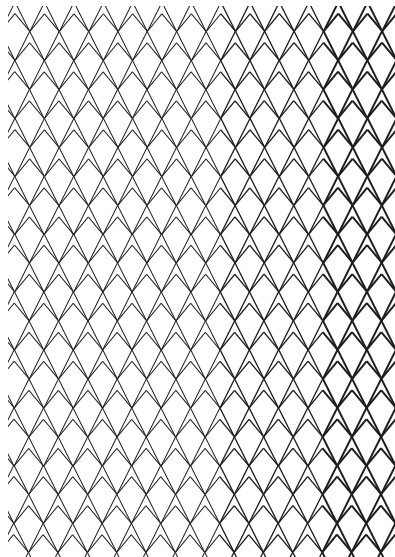
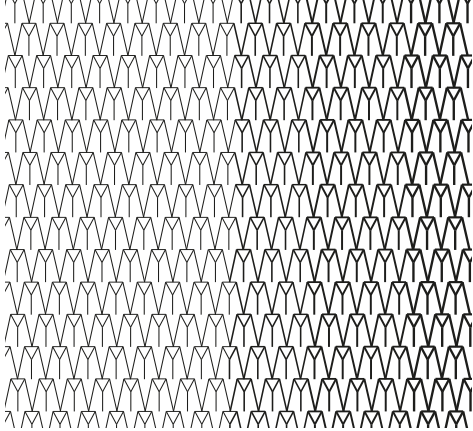
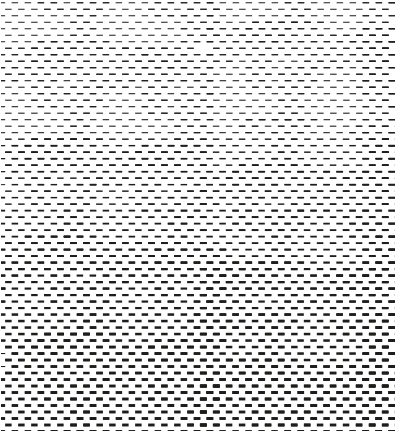


Initial Stages of embroidery planning  
directly on to body form for scale.





Blackwork Embroidery Stitches  
+ Technique Inspiration



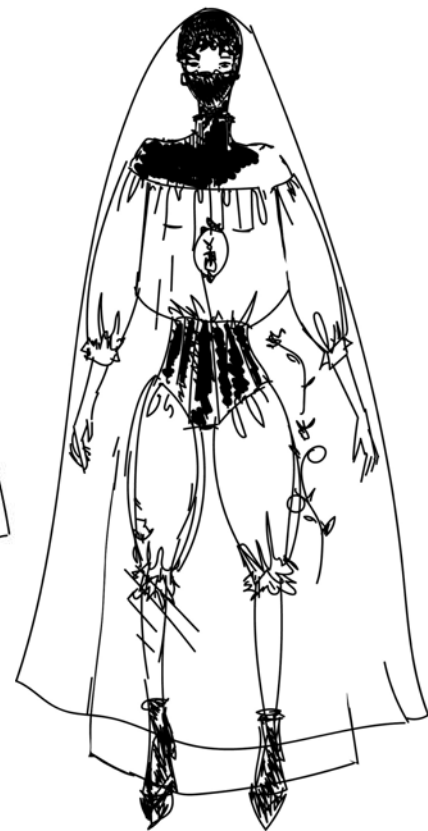
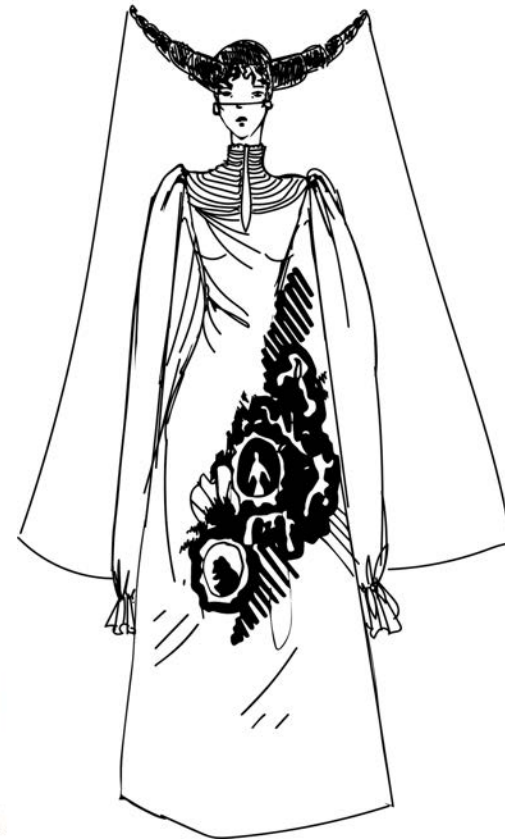


## Look 4 Madness:



Motifs:      Mandrake root  
                 Full Moon (Insanity)  
                 Poppies/ Blue Iris  
                 Dionysus symbol (Frenzy/Excess)  
                 creatures- merged with people  
                 Dead Doves

Main figure merged with creature head - eating doves/men

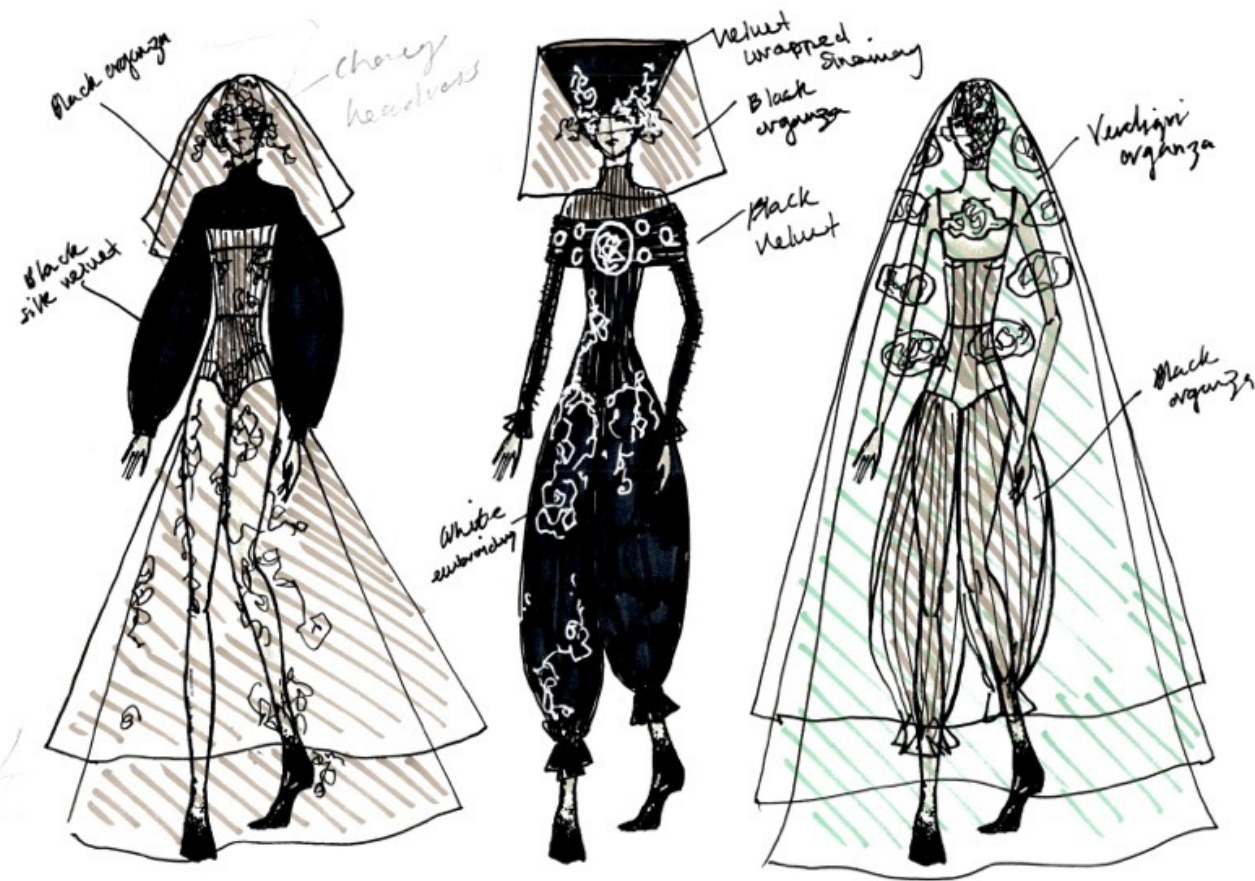








## Look 3: Fear



### Motifs:

- Spiders- Bats (Occult)
- Begonia (Beware)
- Tansy (Hostile thoughts)
- Mugwort (Protection from Evil Spirits)

Figure clutching stomach with spiders coming out of their mouth and covering the body - Surrounded by flowers.









