

## 'REVERSIBLE'

As the last work of postgraduate study, REVERSIBLE is a further development of BISTABLE. The position of the work has evolved from designing to a self-debate. I optimized my design theory and material language in the context of 'The modern quest of order;' Explored the different viewpoints from the **'Internalized consciousness of things'** to our **'Multi-stable perspective of external observation.'** The work aims to present balance between the opposite forces; the repeated transformations reflect the juxtaposition and division of our sensibility, implying a kind of integrality.

[Lamplee.net](http://Lamplee.net)

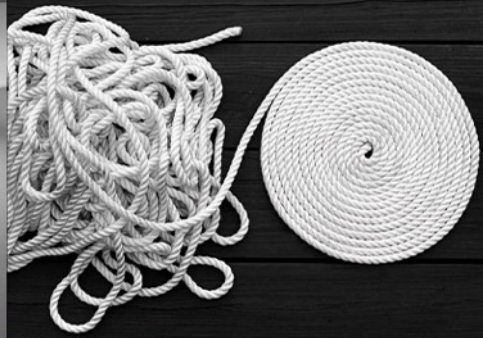




Male  
Female  
Cable



Chaos  
vs.  
order



Anti-mask vs. ~~Wear a mask~~ Pro-mask



Natural  
vs.  
Artificial

War  
vs.  
Peace



Split in  
Protest



Upward  
vs.  
Downward



Sharp  
vs.  
Sleek



Movement  
vs.  
Stillness

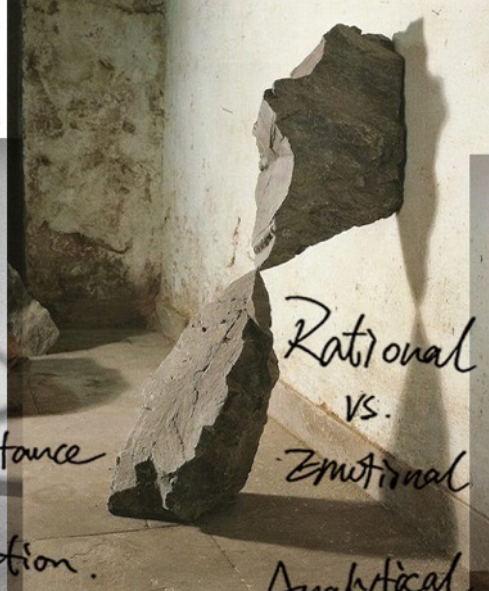


Spiritual  
vs.  
Material



Resistance  
vs.  
Attraction

Rational  
vs.  
Emotional



Analytical  
thought  
vs.  
Intuitive  
thought



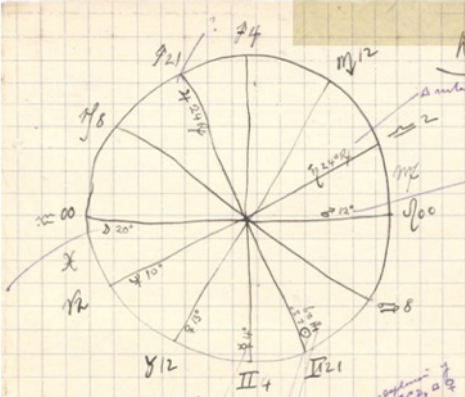
Opposing  
force



Pessoa's manuscript.

a união com Deus, a identificação abstracta e absoluta com-  
 sigo mesmo, a verdade.  
 A figura, que exprime estas especulações porventura fac-  
 ticias, é a seguinte:

I = Intellecto (Resus amens. hincitum).  
 S = Scientia  
 M = Magia  
 A = Alchemia  
 M = Magia  
 In = Imaginatio  
 A = Alchemia  
 M = Magia



W.B. Yeats

5 H (5 M. in II)
5 24
H 24
D 24
2 24
2 24
2 24
2 24
2 24
2 24
2 24
2 24
2 24

curious.

Quadrants:

1. Of personality.
- 2.
- 3.
4. Of achievement.

IV. quadrant

- X - Personal achievement
- XI - achievement by going against others.
- XII - achievement by going against others.

1. Influence of fate + circumstances on personality

2. ———— on achievement

3. ———— personality on achievement

4. ———— achievement on circumstances

9h. to 10h. hours = maximum of achievement

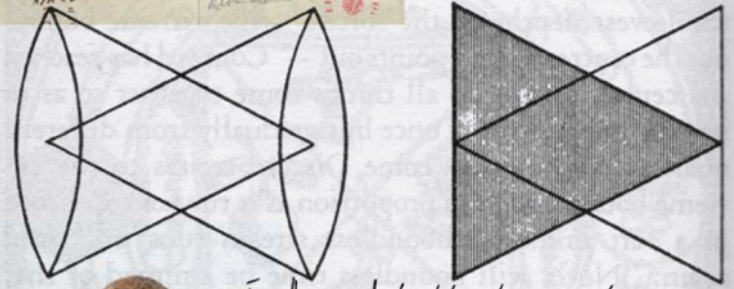
"Representative men" born planets in XI.

Creator of situations in X.

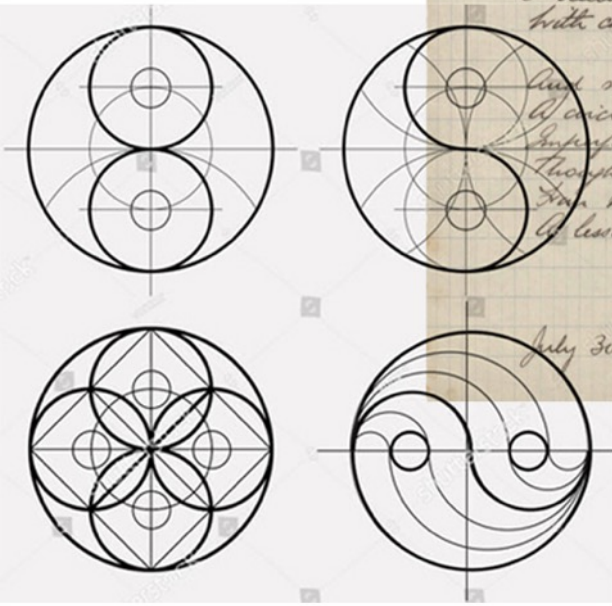
Pessoa's natal astrolological chart of W.B. Yeats.



'A Vision' W.B. Yeats



Everything which takes place in a layer is reflected and features in another. This is the fundamental principle of all Secret Science. Represented by Hermes Trismegistus.



The circle by Alexander Search.

The Circle.

I traced a circle on the ground,  
 It was a mystic figure strange  
 Wherewith I thought there would abound  
 Minute symbols eloquent of change,  
 And complex formulas of Law,  
 Which is the jaws of Change's maw.

My simple thoughts in vain had deemed  
 The current of their madness free,  
 But that my thinking is condemned  
 To symbol and analogy:  
 I deemed a circle might condense  
 With calm all mystery's violence.

Just so in cabalistic mood  
 A circle traced I curious there;  
 Imperfect the made circle stood  
 Though formed with minutest care.  
 The magi's failure deeply I  
 A lesson took to make me wiser.

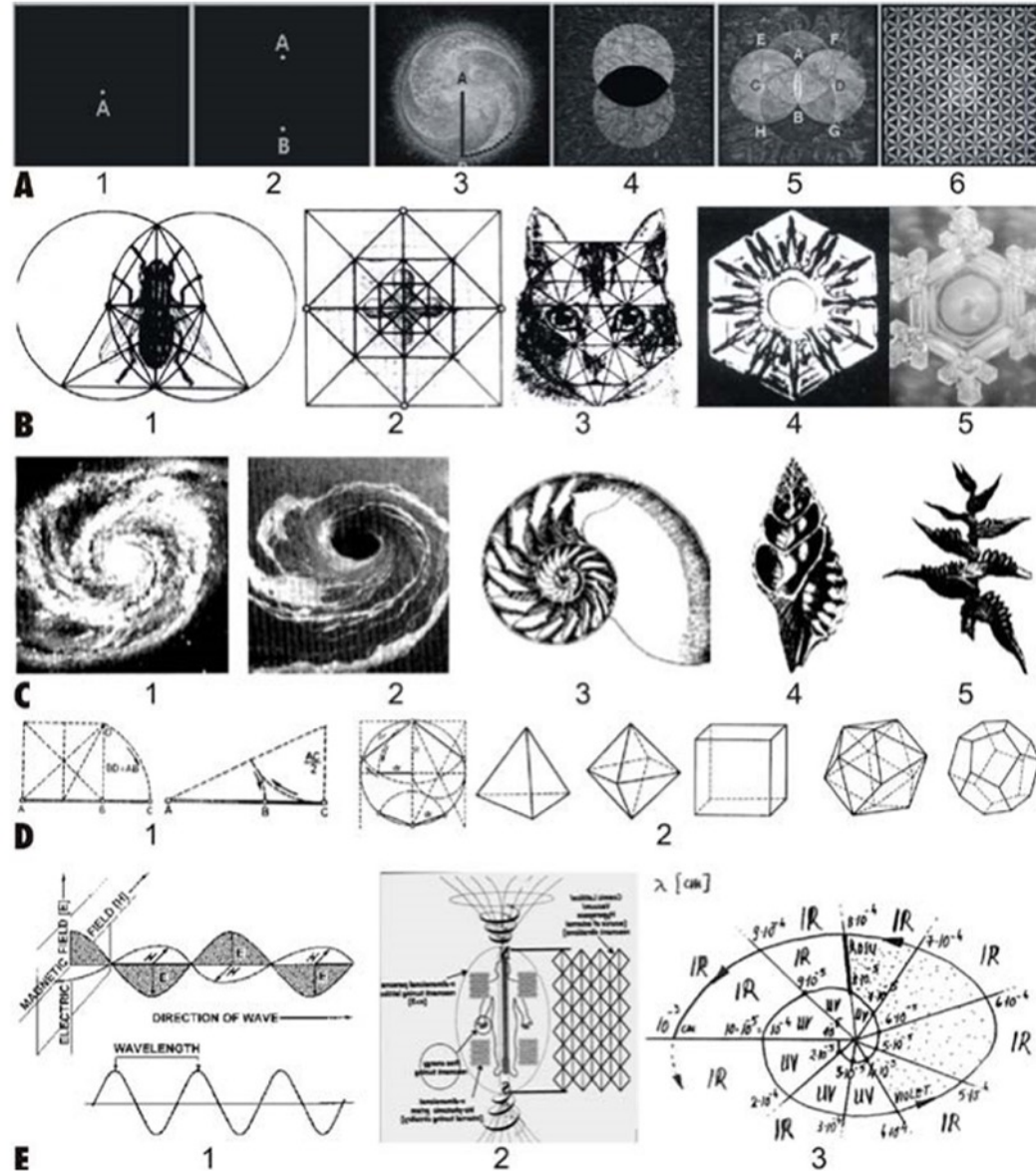
Alexander Search

July 30th. 1907.

Pessoa's manuscript.

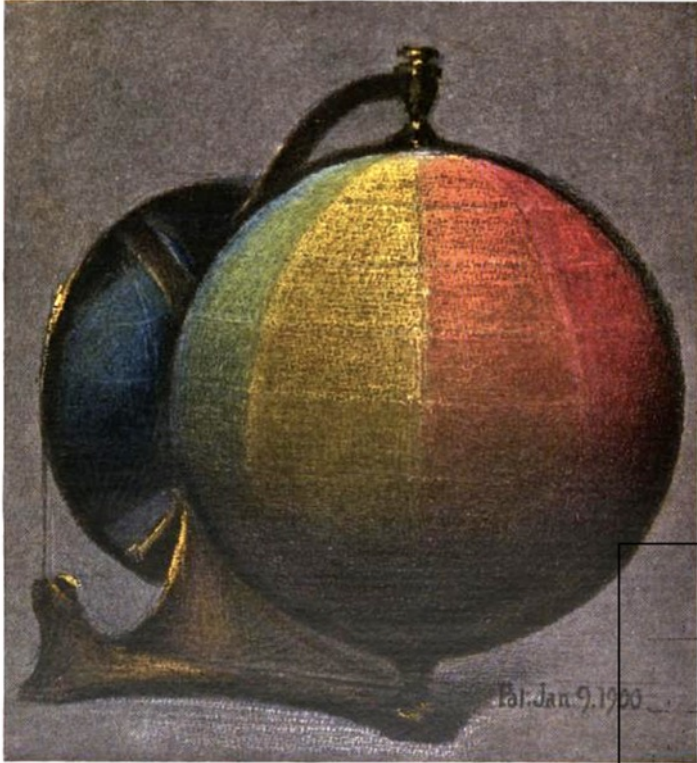


## The spiral, from physical phenomena to biological ones: The harmonisation of the human spiritual-cognitive state

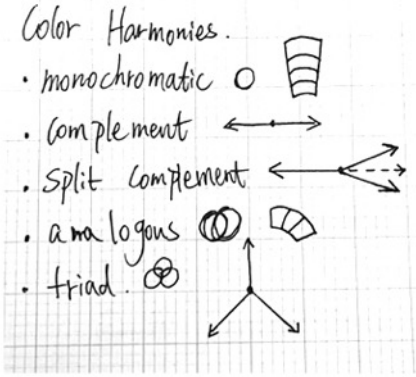
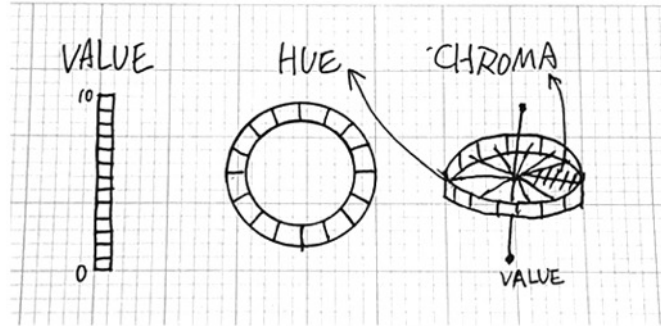


## THE MYTHICAL COLUMN: "AXIS MUNDI" HERMENEUTICAL ALTERNATIVES (Romanian-Indian variants)

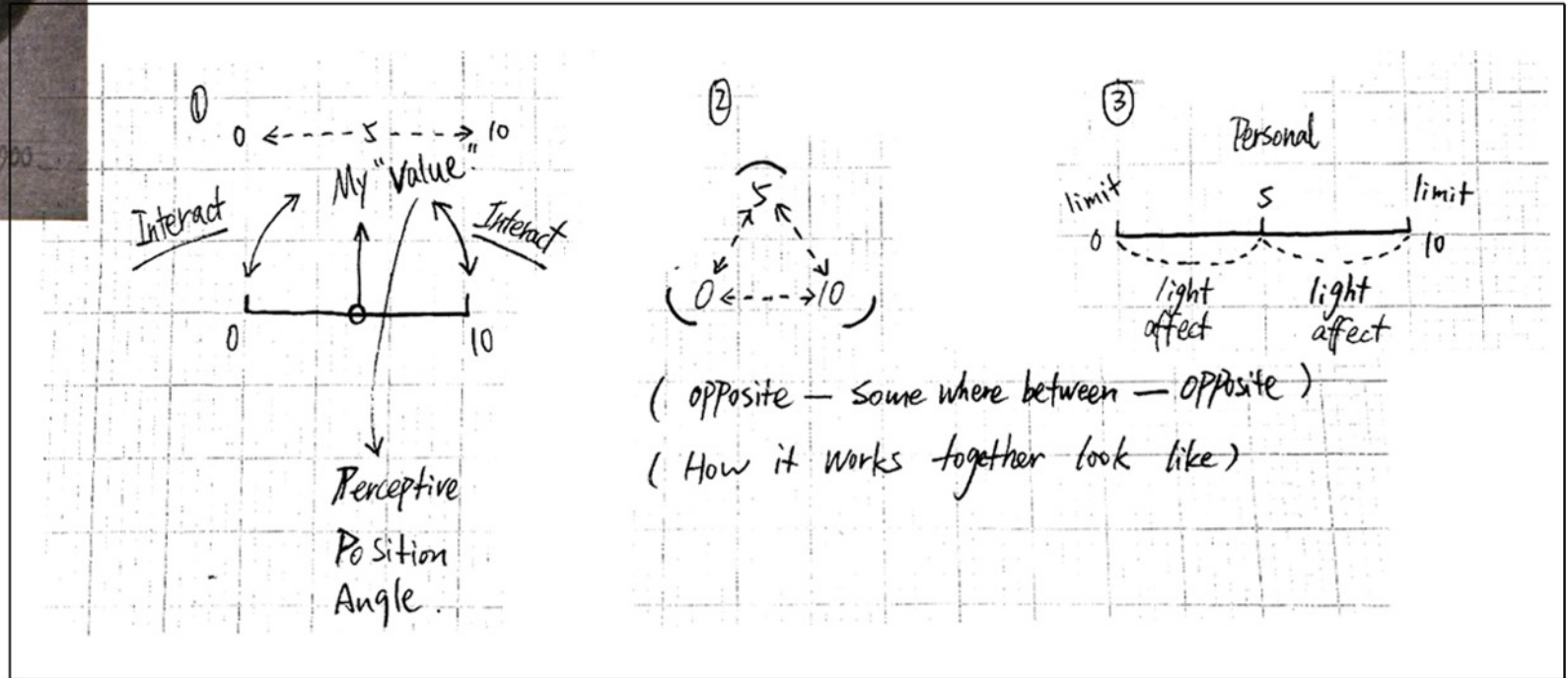
MYTHICAL SYMBOLICAL		HERMENEUTIC ALTERNATIVES	
SYMBOLIZER	SYMBOLIZED	SYMBOLIZED	
THE COSMIC TREE	Order, the cosmic and social law; the World Axis that separates the Sky from the Earth; the identity of the opposites (creating principle); the rupture of the unity through the internal desire of the unique force.	The Pre-figuration of the entropic cycle law (E1-nE-E2) of the universal becoming; the immanent and transcendent principle of the cosmic structures; the fir-tree; the apple tree; elementary symbols;	<p>Elementary symbols</p>
THE MOUNTAIN AND THE PYRAMID:	The creation of time and space-light; the axis of time and space that has unfolded its virtues; the externalization of desire, effect of the internal contradiction; the centre as the isomorphic principle of the world.	A five-dimensional space; the relativity of space and time; fundamental oppositions (dark-light, contraction-dilation, implosion-explosion); the birth of the BHQ duality; spatial amplitude; time axis; the time gate; the pyramidal hourglass of the world.	<p>Pyramidal "hour-glass" of the world</p>
THE WHEEL	The Sun-Column Association; the divergence and convergence of the light; the unique origin of the Sky and of the Earth; the active intervention of the "cosmic vortex".	The cosmic cycle of the becoming in the spiral shape; the relativist evolution of the galactic material; the delimitation of the fundamental planes (non-structured-structured); spiral track; the navel of the world; light wave; galactic ellipsoid (horizontal section)	<p>Spiral trajectory World's navel Wave of light Galactic ellipsoid (horizontal section)</p>
THE EGG	The separation of the Sky from the Earth; the determination of the time and space-light; the birth and the death of the cosmic world.	The delimitation of the ellipsoid through the "galactic crust"; the separation of the cosmic void from the full; the apparition of the cosmic formations under the action of the centrifugal-centripetal forces; the open spiral that closes.	<p>BHQ duality Galactic surface Time axis AXIS MUNDI (cosmic column) Galactic meridian BHK duality Galactic ellipsoid (vertical section)</p>
THE GOLDEN TWINS	The supreme ontological principle; the unique organising force; the potential latency of the unique layer, forerunner of the Sky and of the Earth.	Transfers between the fundamental planes; the genesis of the BHQ dualities; folded order; the holographic principle; The Infinite Column of the Universe; the ovoid hourglass the world.	<p>Infinite column of the Universe BHQ duality Gold germ</p>
THE TURTLE	Separation and ascension; the cancellation of the square-circle, finite-infinite opposition; the synthetic principle of the cosmic becoming.	The pre-figuration of the transfer and of the informational continuity law; ...E1- nE - E2 - (nE1) - E - (nE2) ...; the hourglass of the cosmic worlds; unfolded order.	<p>Ovoidal world "hour glass"</p>



A BALANCED COLOR SPHERE



"THE DELICATE BALANCE THAT GOES FROM TWO OPPOSITE SIDE TO THE MIDDLE"

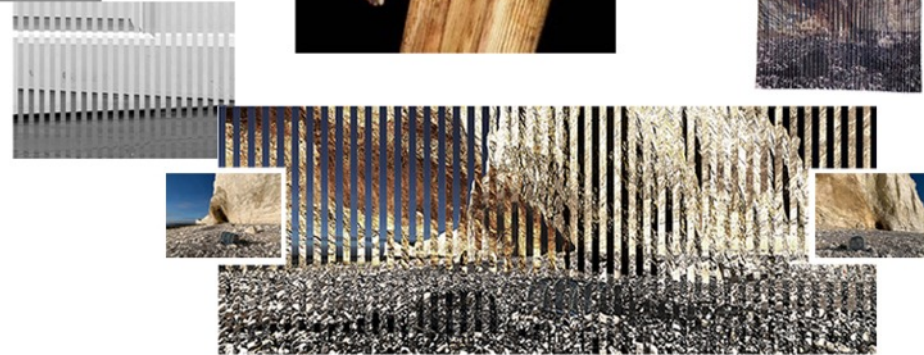
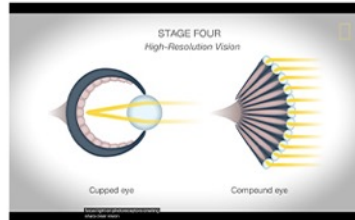
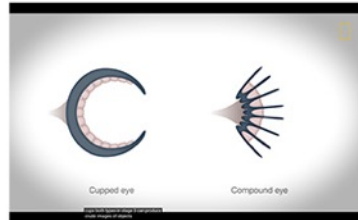
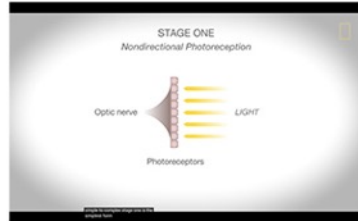
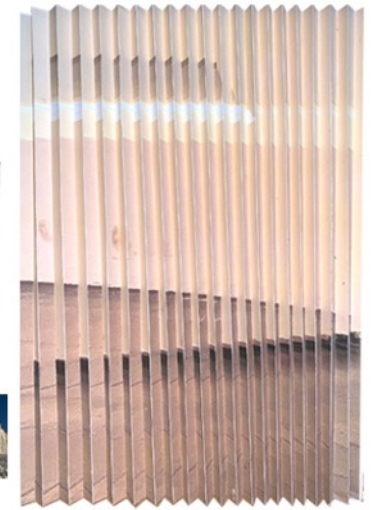
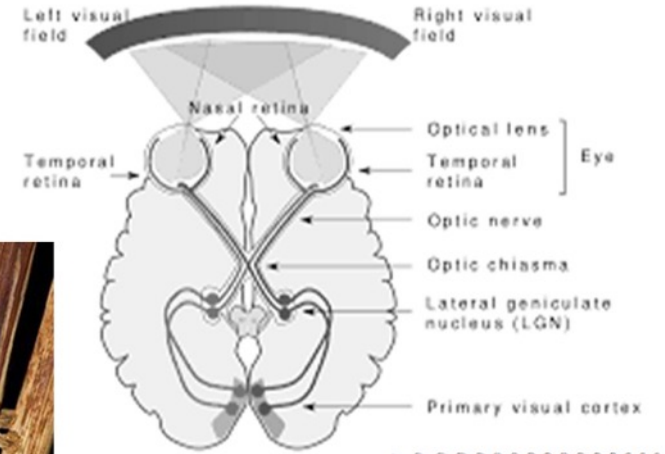
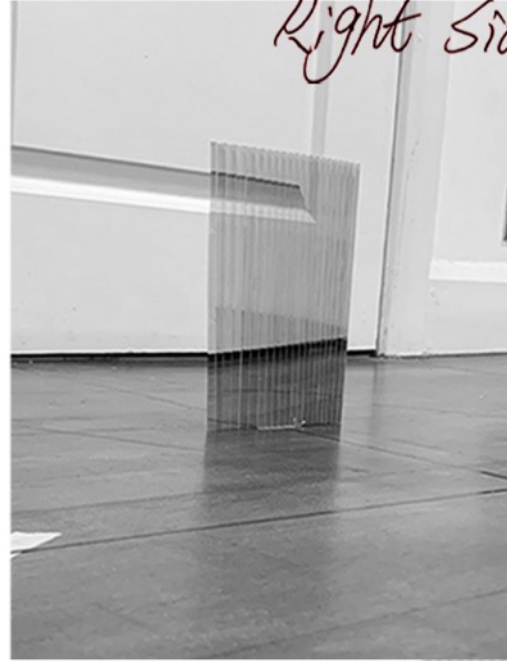




Left side.

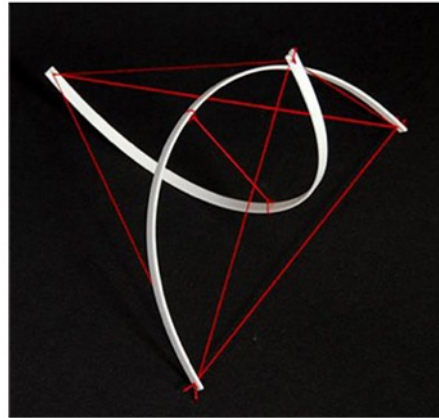
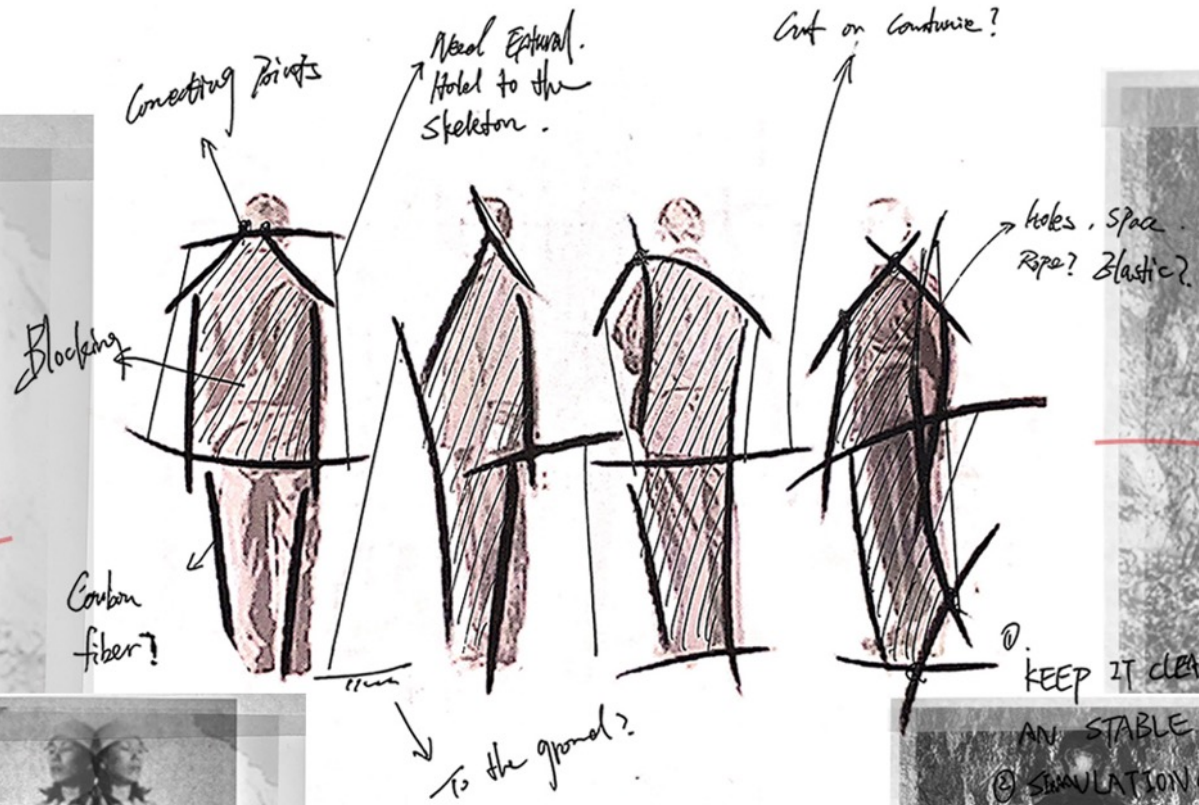


Right side.

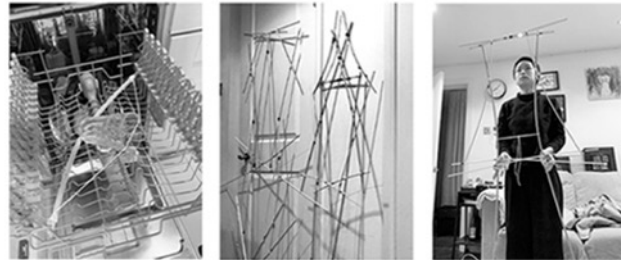
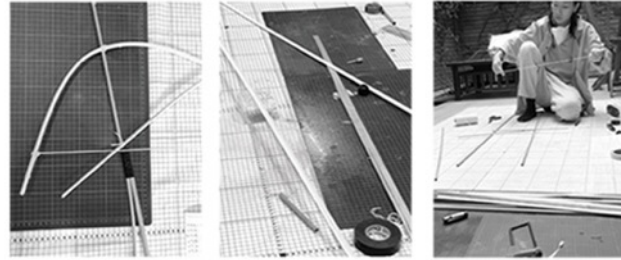
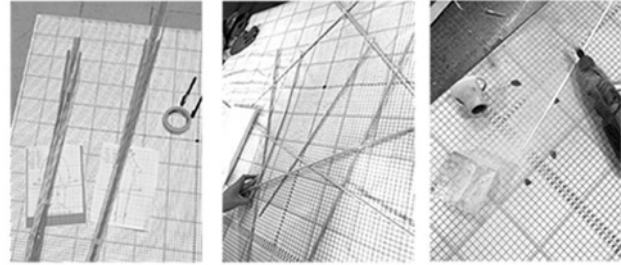
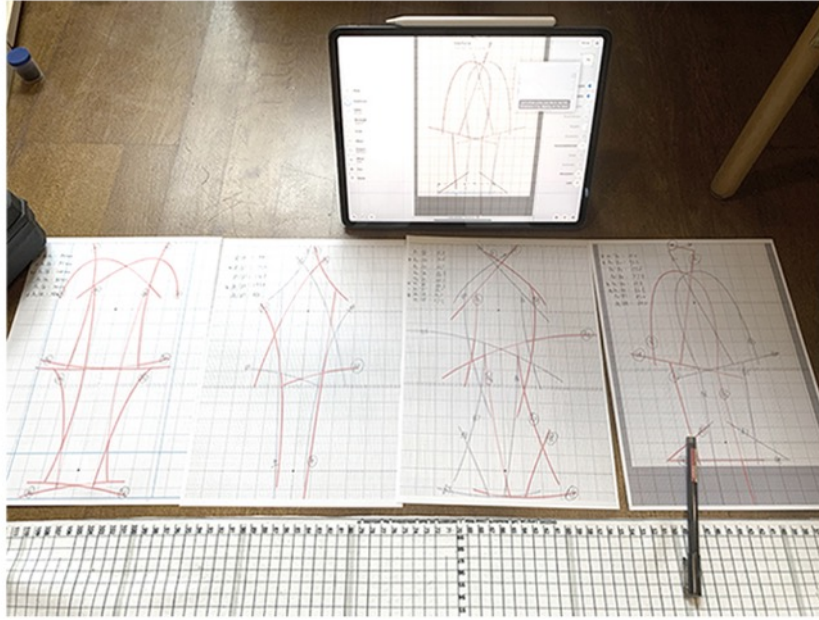


Some animal super vision like chameleon's visual system allows them to see their environment in almost 360 degrees, providing a view to the both sides and behind or toward the front.

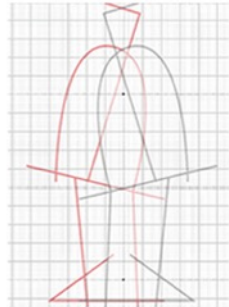






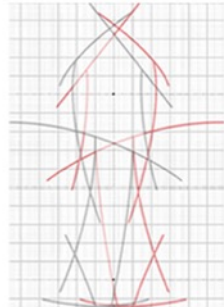


A1/B1: 200  
A2/B2: 955  
A3/B3: 1756  
A4/B4: 774  
A5/B5: 698



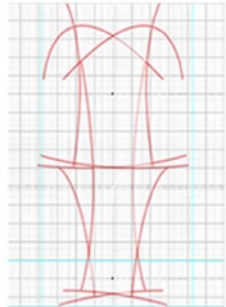
A6/B6: 868  
A7/B7: 430  
A8/B8: 640

A1/B1: 565  
A2/B2: 726  
A3/B3: 647  
A4/B4: 869  
A5/B5: 1097

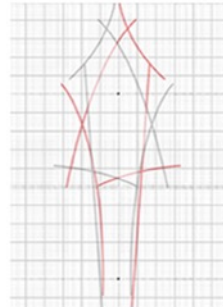


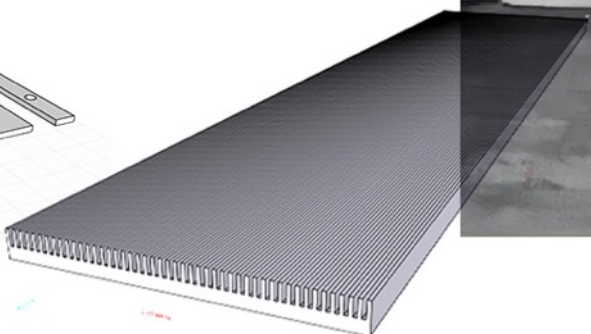
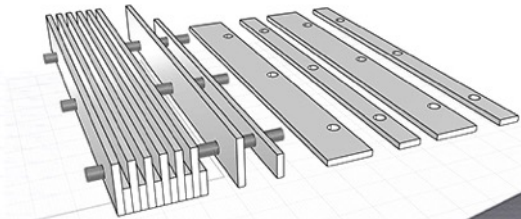
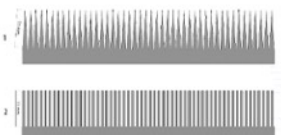
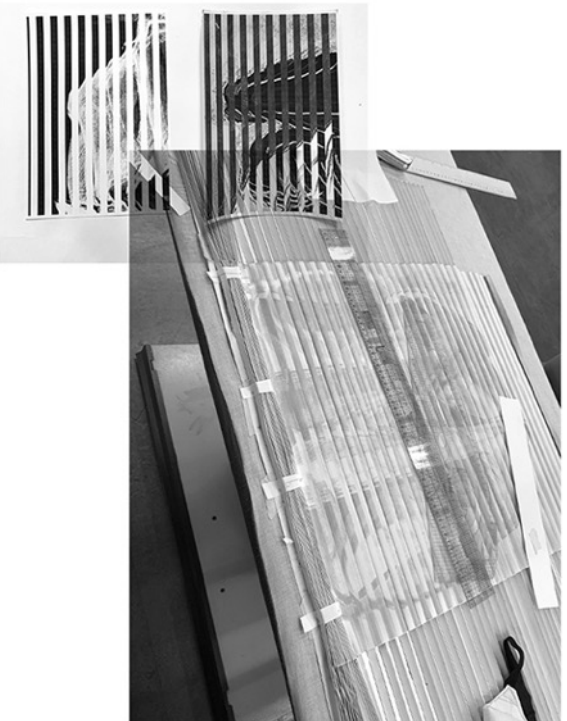
A6/B6: 843  
A7/B7: 867  
A8/B8: 417  
A9/B9: 575

A1/B1: 940  
A2/B2: 913  
A3/B3: 1260  
A4/B4: 803  
A5/B5: 742

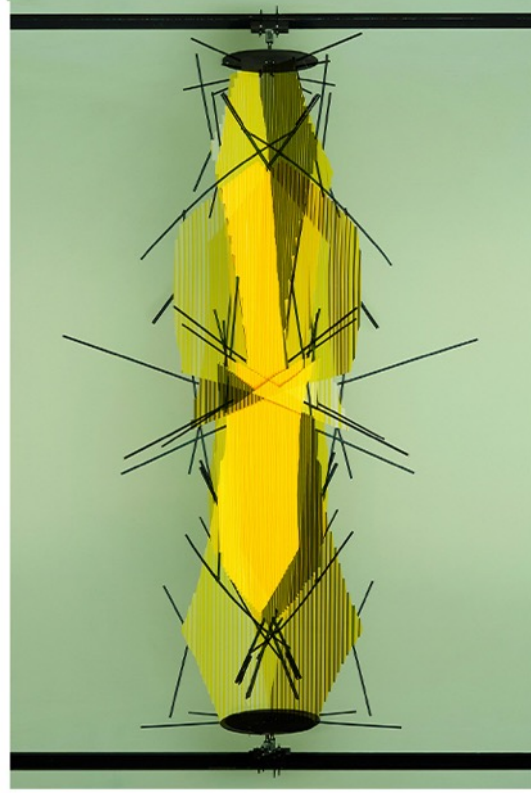
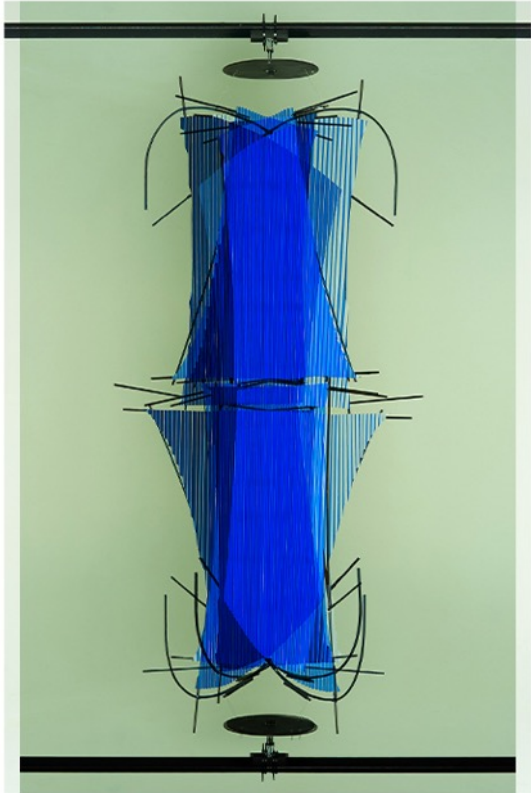
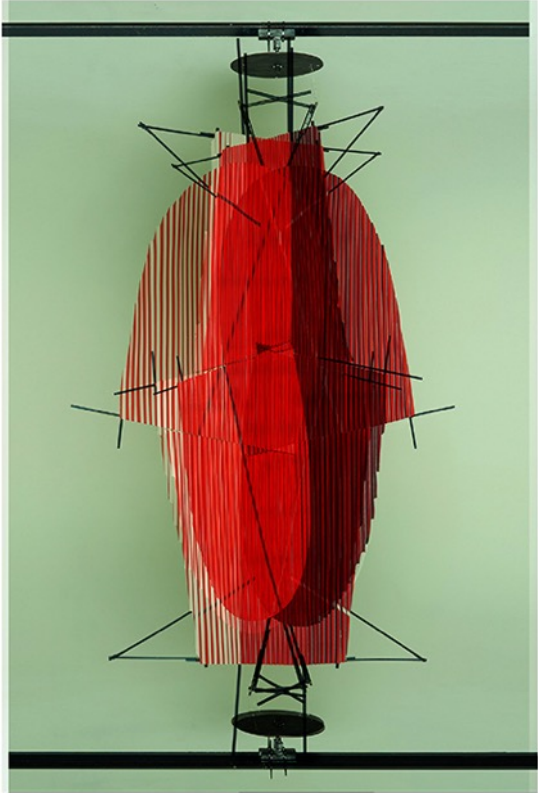


A1/B1: 506  
A2/B2: 1075  
A3/B3: 1263  
A4/B4: 1330  
A5/B5: 464

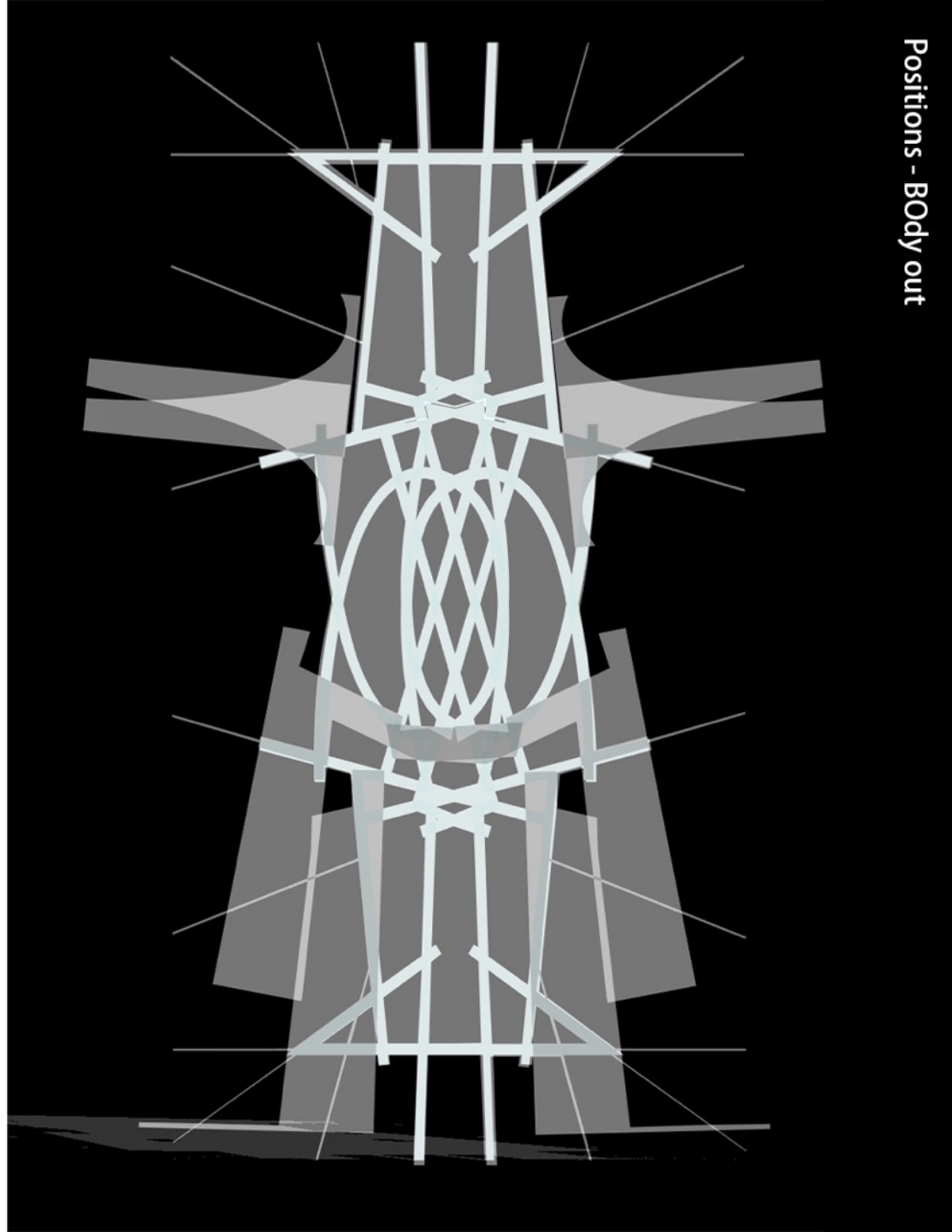
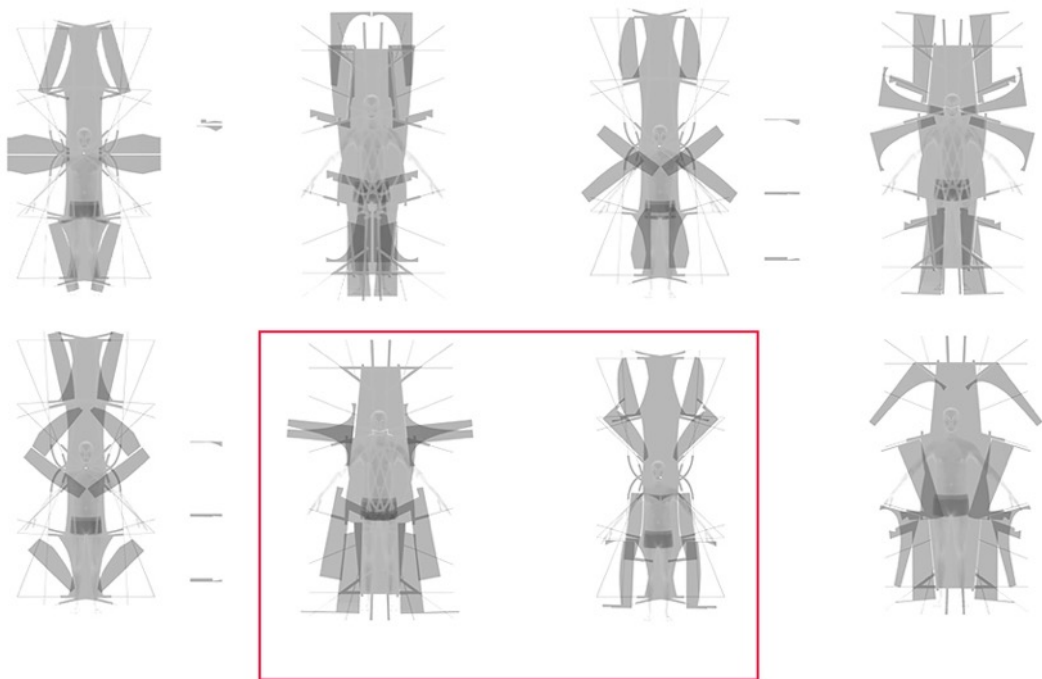
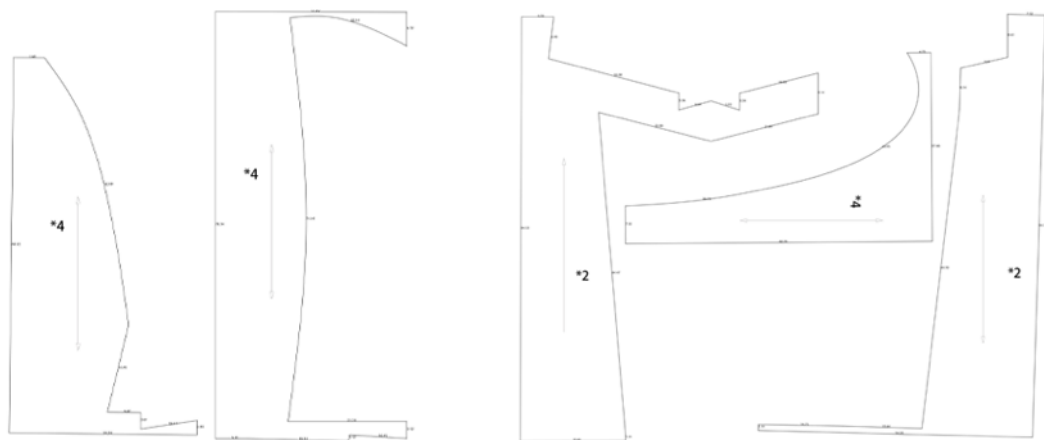






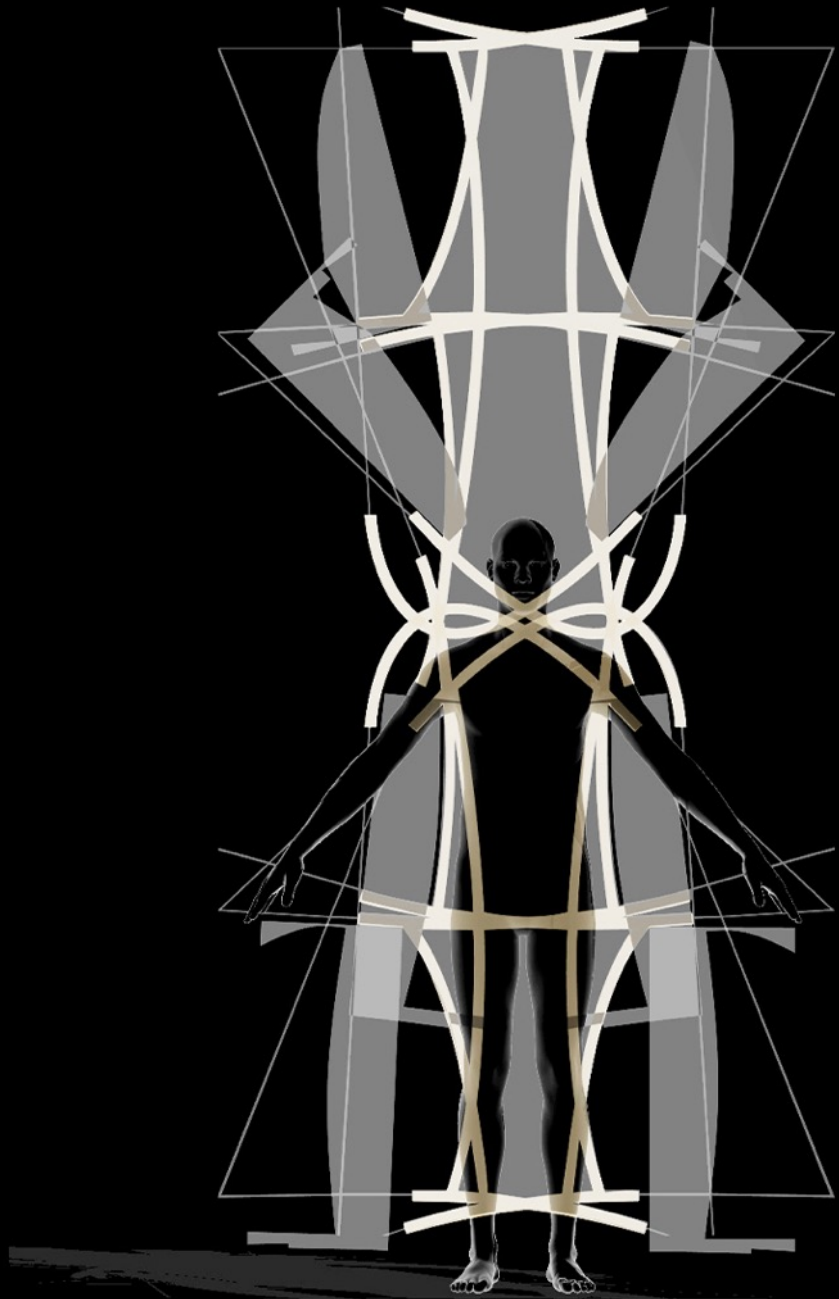
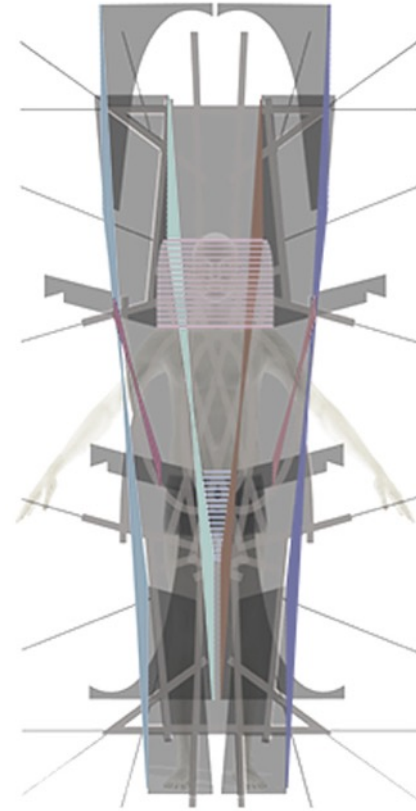


THE NEGATIVE CUT ...

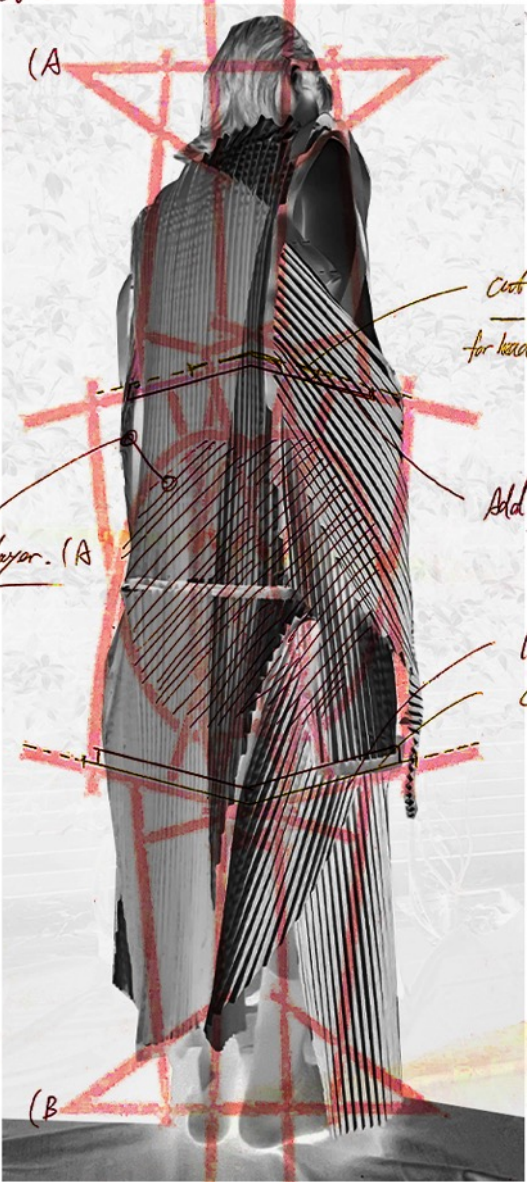




THE CONNECTION..



(A = Back  
(B = front.

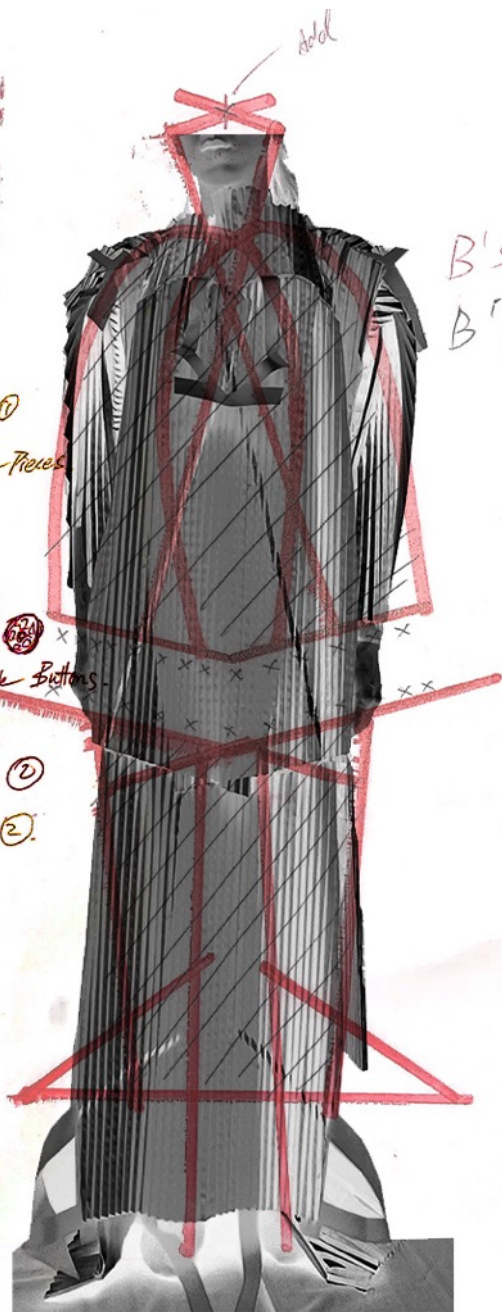


Cut off layer. (A)

Cut line ①  
for head space pieces

Add Tape ①  
Inside Buttons

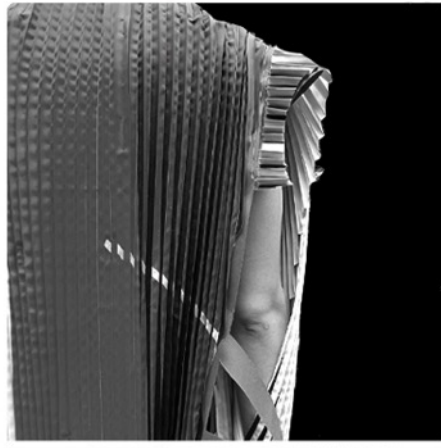
Add Tape ②  
Cut line ②



Add

B's  
B'P

B's  
B'P









Hello, Who is there?





Hello, Who is there?



Hello, Who is there?



THANK YOU

