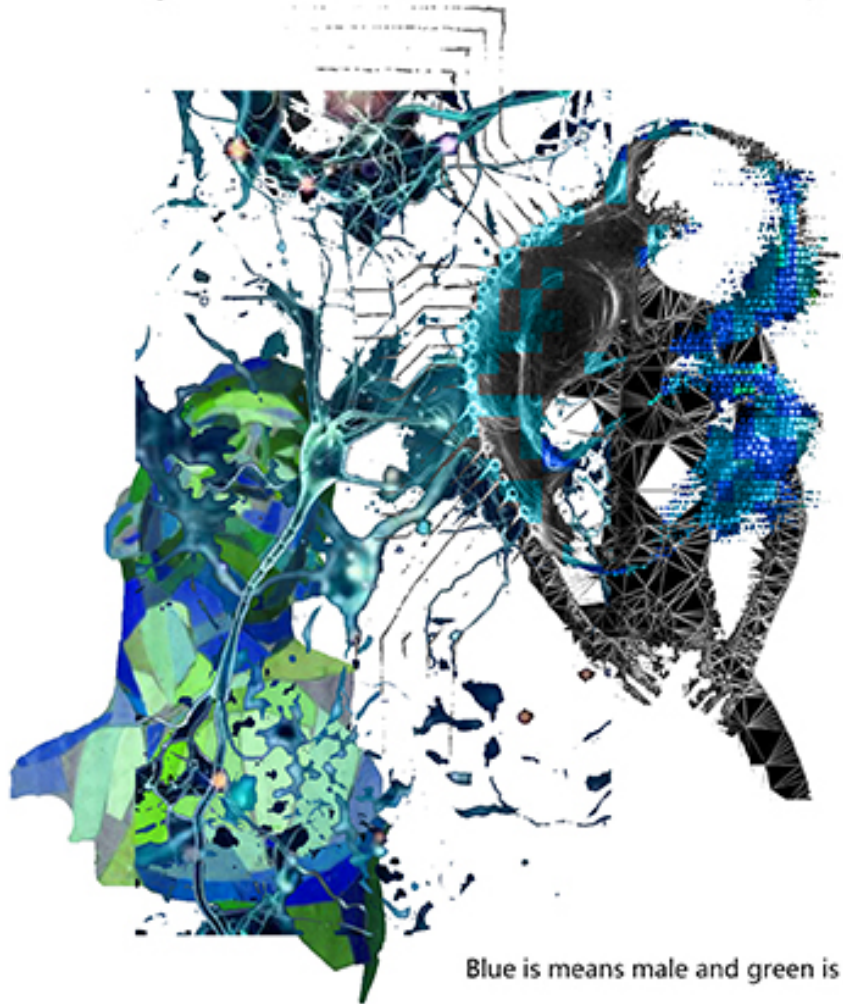


## Future Gender Scenarios for Fashion

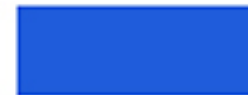
Ye Yuan

Design Research

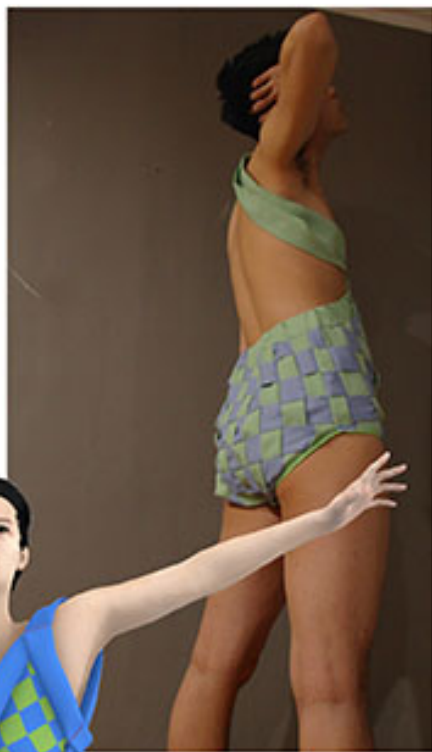


Blue is means male and green is means transfer in the gender role.

COLOR PALETTE



Design Research



Look 1

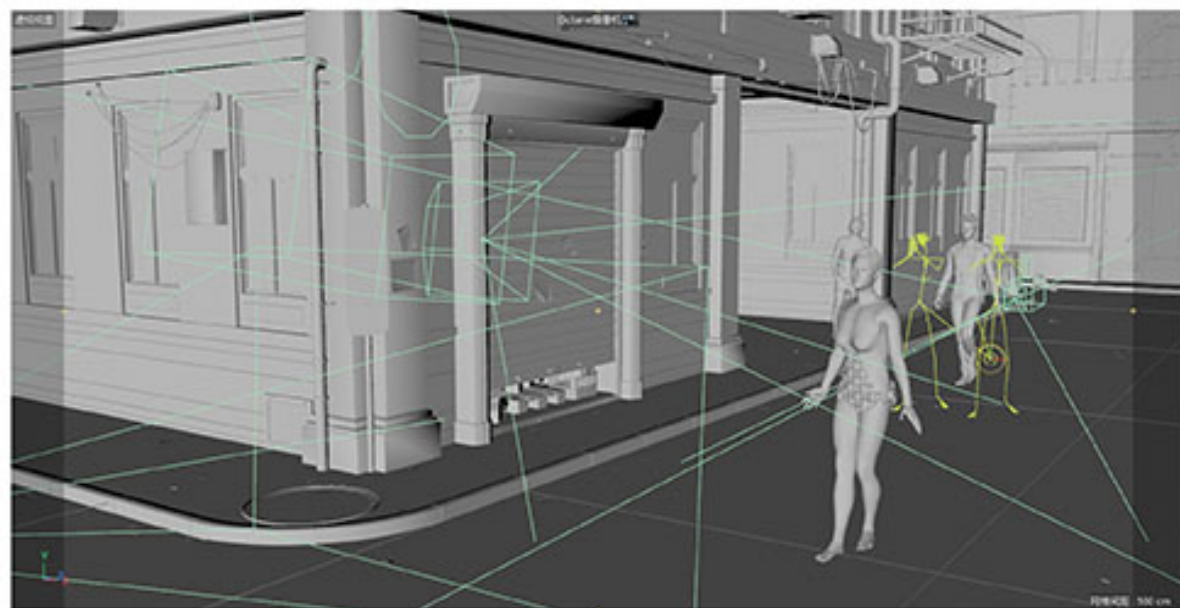
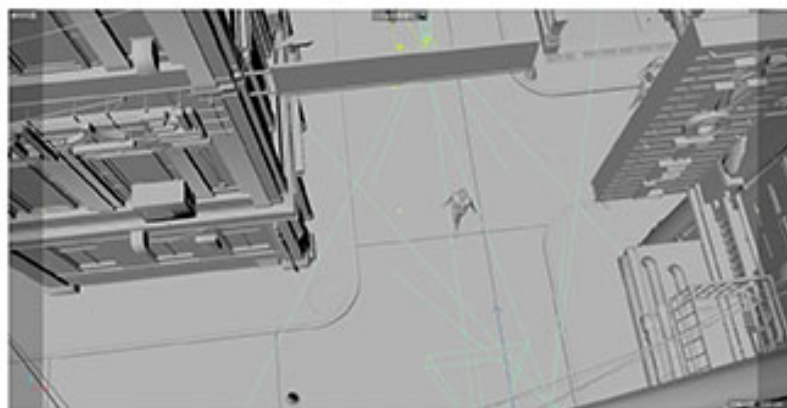


Look 2



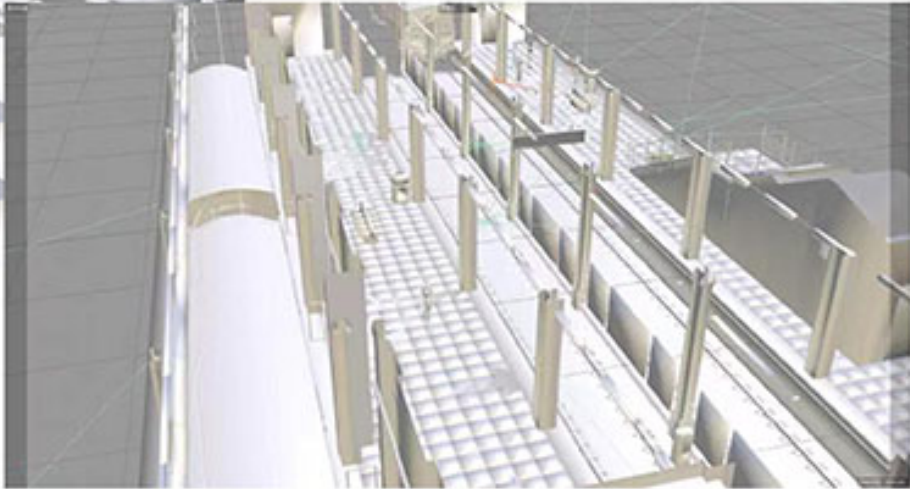
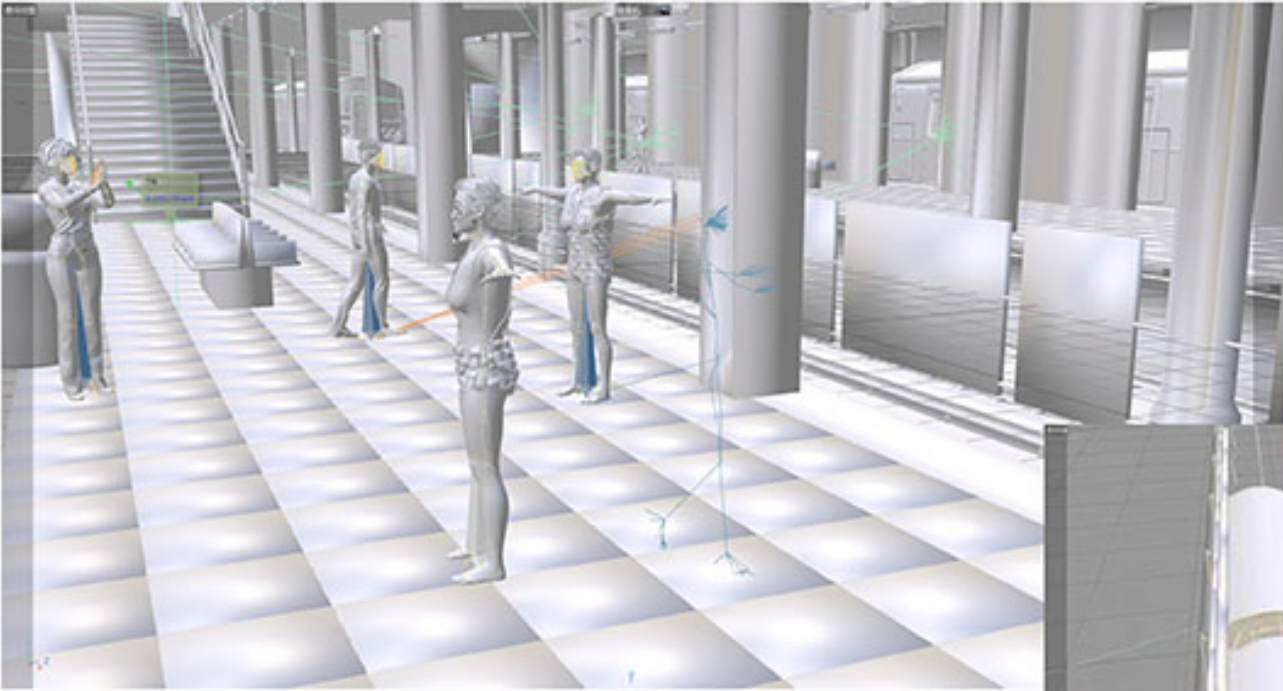
Look 2

Design Development

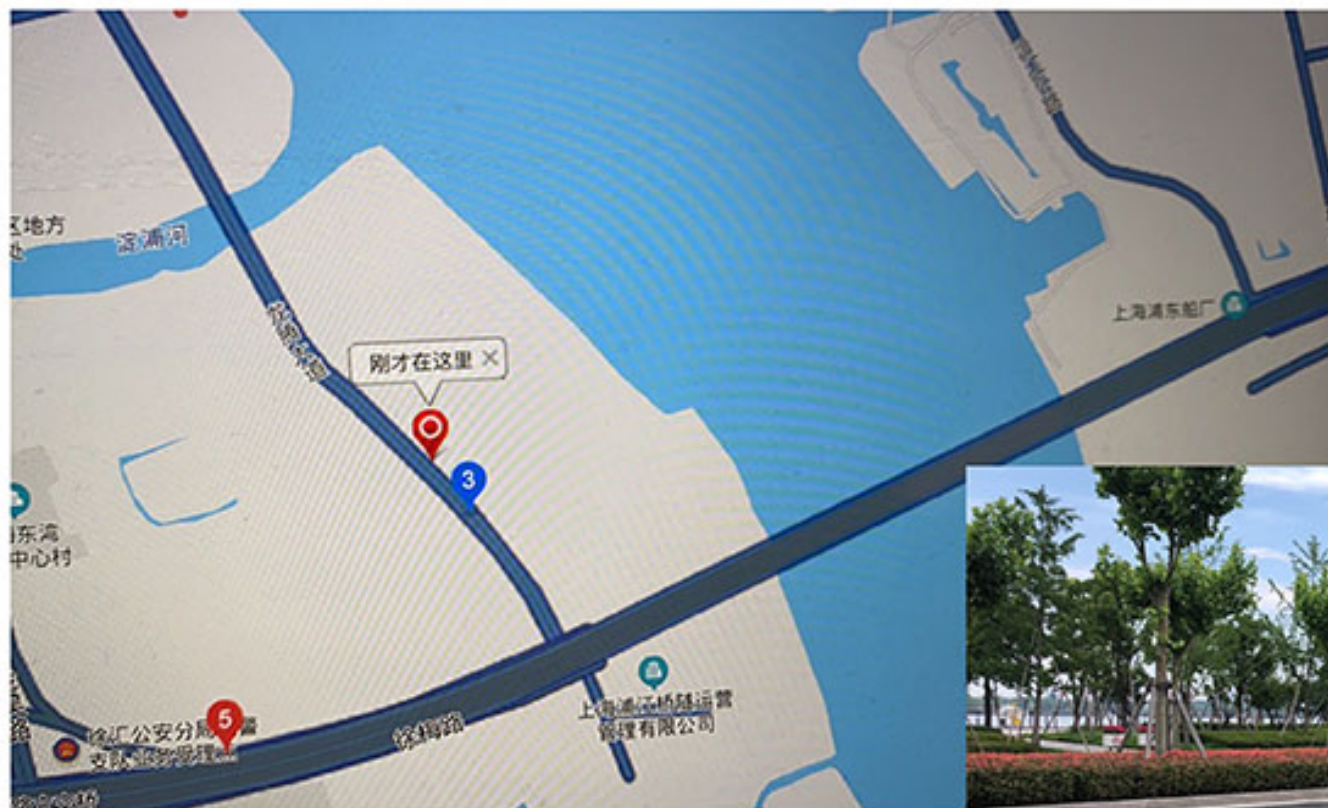




Design Development



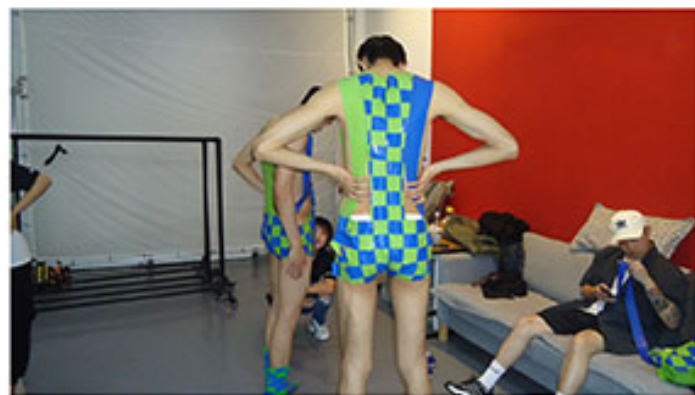
## Design Development





Design Development

BTS



## Design Development



Is prejudiced? Not allowed? The photography of my project is a big challenge in China because we are often driven out and not allowed by a security officer when the process of photography. For example, they even said 'how it looks like a tall boy who wears underwear in the street?' Fortunately, these two models have the basis of Tai Chi and dance respectively during I do not communicate with the model before, meanwhile, the weather in Shanghai suddenly turned sun in that day. Although the photography working is so hard the work of photography is happy completion.

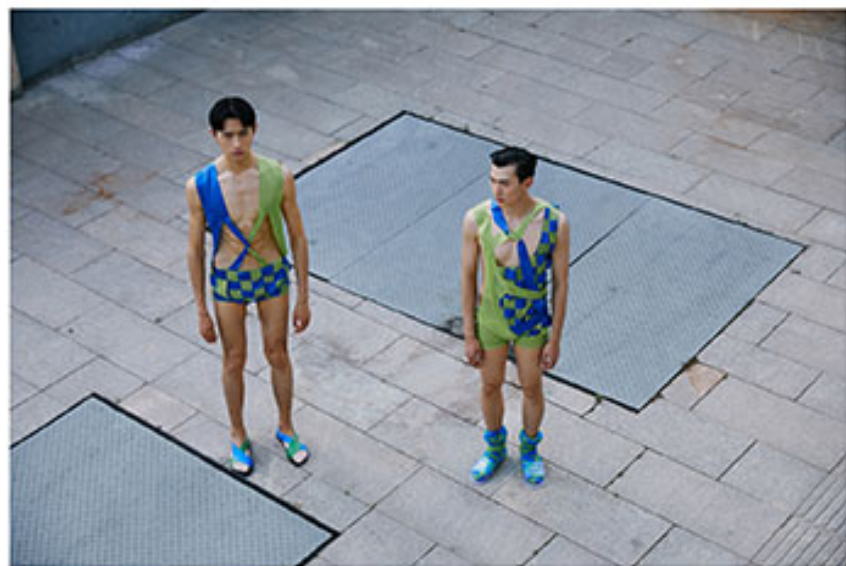


## Design Development







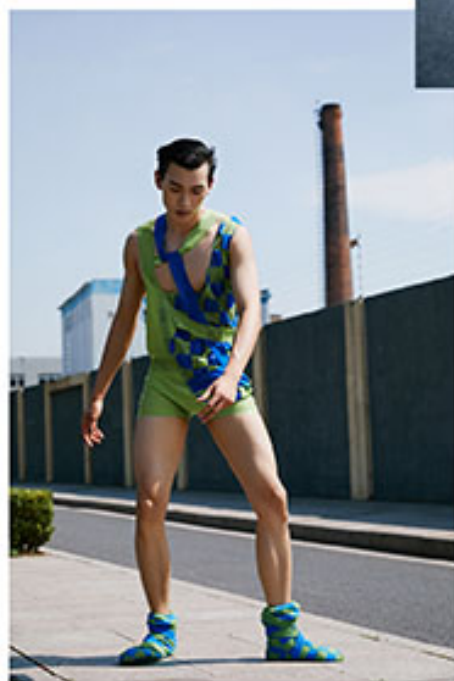
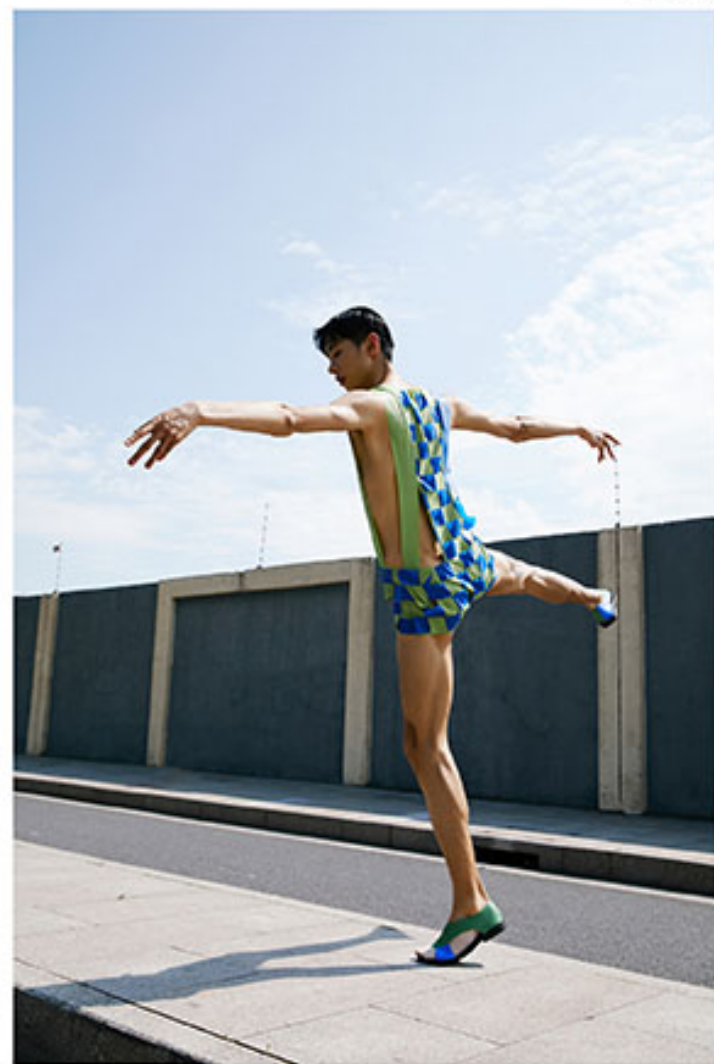
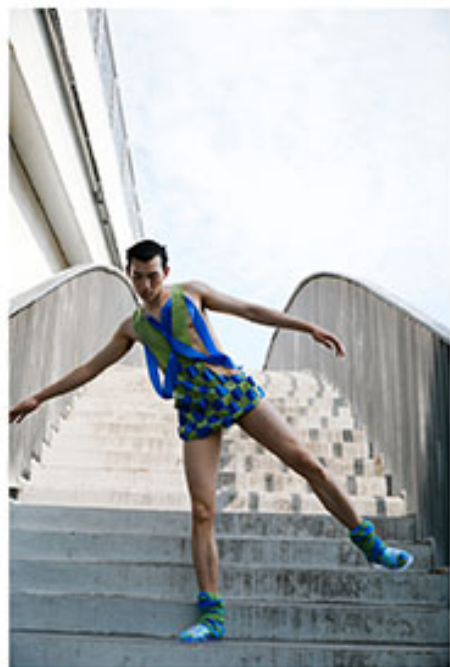






 Royal College of Art x Ye  
Postgraduate Art & Design





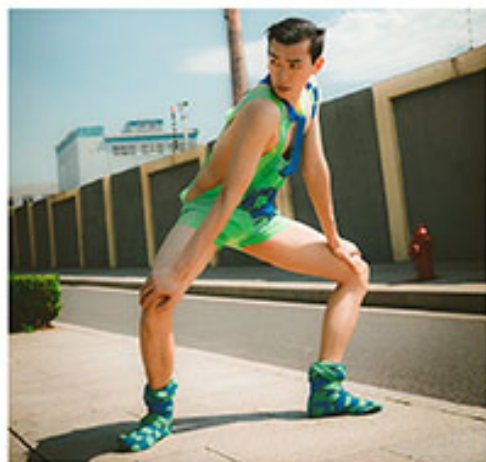




  
Royal College of Art x Ye  
Postgraduate Art & Design







 **Royal College of Art** x Ye  
Postgraduate Art & Design





 Royal College of Art x Ye  
Postgraduate Art & Design







  
Royal College of Art x Ye  
Postgraduate Art & Design



















x Ye

Royal College of Art  
Postgraduate Art & Design

