

**FREE**



**FORM**



**FAYE WONG**

**UNITED KINGDOM, LONDON**

LINKEDIN | [www.linkedin.com/in/faye-wong-94b578172](http://www.linkedin.com/in/faye-wong-94b578172)

INSTAGRAM | [@faye.wong.wy](https://www.instagram.com/faye.wong.wy)



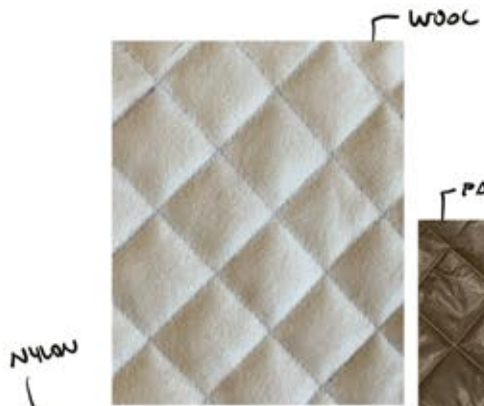
# FREEFORM

---

This collection is a visual representation of my research on how the appearance military garments is affected by functional details. In the collection, I combined hard-wearing, utilitarian military garments with delicate silks. I have drawn inspiration from various garments such as bomber jackets, flight suits and quilted liners to create my line up.

The collection primarily embodies the characteristics of a parachute from the use of lightweight nylon and silk to the seam work of the panels that make up the parachute. The inspiration of flow is also shown in the construction of garments throughout my collection through the use of silks and nylon, and the slash and spread technique to create fullness in the garment when ruched with a drawcord.

Ruching elements throughout my collection allow for the wearer to change the silhouette and fit of the garment. This possibility for adaptation within the garments reflects the idea of 'freeform' as the ability to react flexibly to the demands of a situation.



# FISHTAIL PARKA



LENGTHEN & SHAPE



POUCHES





HEAVY WEIGHT VISCOSE JERSEY  
+ SHIRTINGS.



MESH TOP SHIRTING OPTIONS.



BACK

FRONT

SLEEVES.

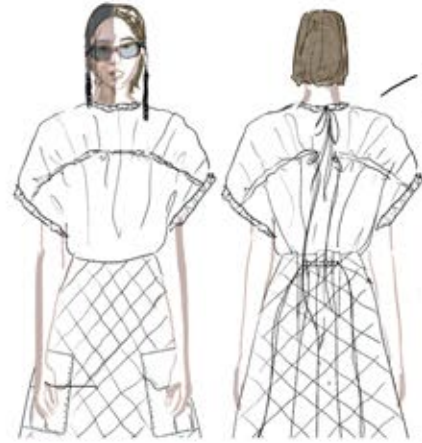
KIMONO DRAPED UPSIDE DOWN.



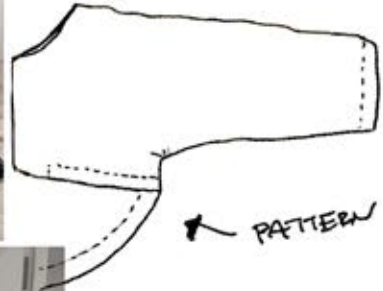
CROPPED KIMONO WITH A RUCHED WAIST.



SLOPE LINE TO THE BACK



RUCHING CHANNEL ALONG THE OVER BUST TO THE TAIL.



DEEP CURVE ON BACK (INTRO DUCES FULLNESS) WHEN RUCHED

PATTERN

ADDED GUSSETED HOOD



ADDED ELASTIC CUFF FOR FUNCTION AND ADDED VOLUME ON ENDS OF SLEEVES.



MILITARY COTTON CAPE

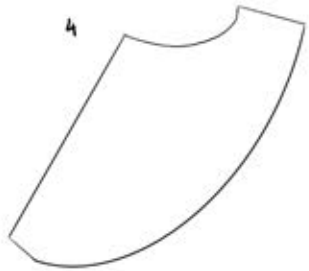
KIMONO PATTERN



CHANGE EIGHTH ANCHOR TO FURTHER DRAPE



SLASH & SPREAD



SLIGHT OVERLAY  
UNBUCKLED



ONE SINGULAR  
CHANNEL WITH PARACORD.



TWO TONED  
FISH TAIL PARKA  
SKIRT.



FISHTAIL PARKA DETAIL

ADD WELT POCKET

SLOPE MORE  
AND EXTEND BACK





FRONT



BACK



LINING



2nd TRIAC



SIDE



BACK

FRONT

WAIST LINE  
NOT FITTING WELL  
\* NEEDS MORE SHAPING  
ON SIDES & TAKEN  
IN BY 2CM ON EACH  
SIDE

RESHAPE

FOLD DOWN  
& TOPSTITCH  
LINING.

SKIRT OVERLAY  
ON FISH-TAIL  
PARCA SKIRT.

SHELL AND  
WELL POSE  
WITH LINING

APPROXIMATE  
ANIMAL  
+ COTTON TUBE



ORGANZA +  
COTTON TAPE  
RUCHING CHANNELS



KIMONO  
PATTERN



COVERED  
BOTTOM STAMP

ORGANZA  
TUBE

PELT SEAM

TAB  
RESTRICTION

WIDE  
PANEL

WIDE  
PANEL

SLIT + SPREAD  
TUBE + BACK  
EDGE  
→  
ADDED CHANNEL  
& TRUSSARDI STAMP  
TO CREATE  
GATHERS

VOLUME ADDED TO  
ENTIRE BACK PANEL  
(MORE FULLER) CAN  
WASH FROM THE FLATNESS  
OF THE WHITE BAND  
(INTERIORS)

BOTH UPPER & LOWER  
SLEEVES SLIT + SPREAD  
→ ADDED CHANNEL TO USE  
SLIT + BACK TUBE  
TOGETHER TO BE GATHERED

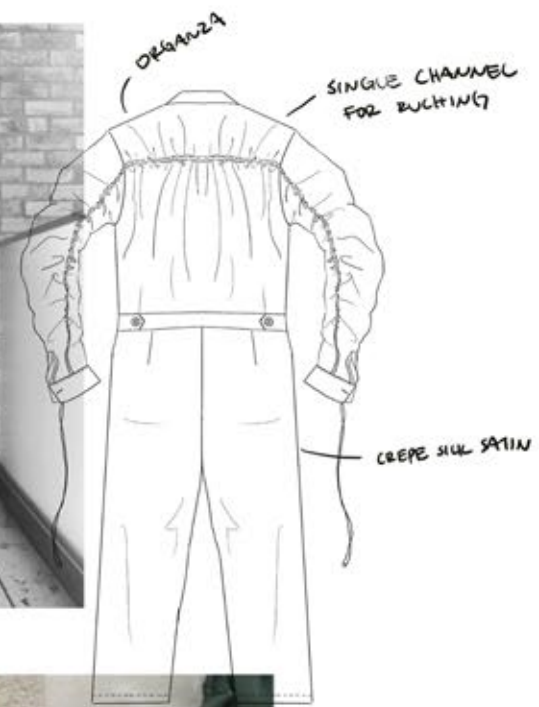
CROPPED JACKET  
WITH RUCHING  
↳ MULTIPLE CHANNELS



ORGANZA  
CROPPED SHIRT

RUCHING CHANNEL  
RUNNING FROM UNDER  
SLEEVE TO THE BODICE.





FIX TENSION IN FRENCH SEAM.



BINDING ALL FACING SEAMS



PLACKET SEWN WITH RAYON BINDING



TAB FASTENING POLY FOUR HOLE BUTTON (18mm)



CONCEALED BUTTON STAND



RUCHING CHANNEL IN THE SLEEVE SEAM



TOP STITCH ZIPPER DOWN - QUILTING STITCH ENDS ON THE CF LINE.



HERRINGBONE COTTON TAPE TO BIND EDGES



FOLD SEAM ALLOWANCE & SLIP WITH COLLAR TO NECKLINE



FACING ON HEMS OF PUFFER - STAY STITCH





COTTON TAPE  
HEM ON FRONT  
LINING.



BACK LINING + FACINGS



RICKRACK



DOUBLE FOLD ON HEM +  
TOPSTITCH



INTERNAL WELT  
POCKET



BIAS TAPE FOR  
SEAM BINDING



TOP STITCH ON RIBBING



RICKRACK CHANNEL



LINING  
HEM WITH  
COTTON TAPE



WAVE QUILT



FACING + LINING  
(BACK)



WELT POCKET



COTTON TAPE TO  
BIND EDGES



DIAMOND QUILT.







