

BFC PRESENTATION

REUBEN SHRESTHA

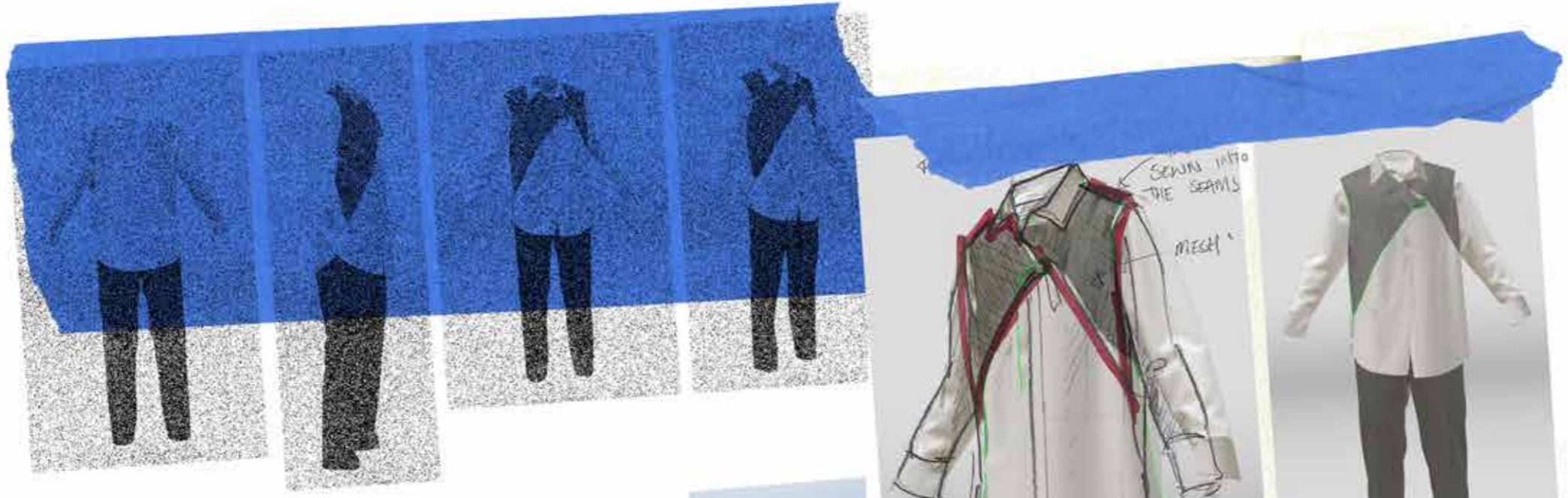


WHEN RUGBY LADS BECOME HONEY HUNTERS



FABRIC INSPO BOARD

FOR THIS COLLECTION I REALLY WANTED TO FIND A GOOD MIX BETWEEN TECHY FABRICS AND NATURAL ONES. AS MY CONCEPT ALLOW ME TO EXPLORE THIS UNUSUAL COMBINATION. SPORTY FABRICS FROM RUGBY/CLIMBING AND NATURAL FABRIC FROM THE HONEY HUNTERS



LOOK 2

- SHIRT
- TIE
- TROUSER

TRYING TO INCORPORATE THIS TIE
 DETAIL FROM THE HUNTERS INTO A
 CLASSIC OXFORD SHIRT.

CONTEXT: BEFORE AND AFTER RUGBY GAMES
 WE WEAR SHIRT AND TIES



LOOK 2

NEW TOILE

CHANGED THE FRONT OF THE ARMHOLE TO A KAGAN SLEEVE SO ITS EASIER TO ADJUST THE TUNIC GOING AROUND ALSO NOT MAKING THE FRONT RASEAN ALLOWS ME TO KEEP THE BACK YOLK



WITH SILVER DETAILING FOR THE CLIP -

IDEA FOR PRINT POTENTIAL IDEA??



CAN EITHER ADD DARTS OR MAKE IT INTO PANELS



HAVING PANEL MIGHT BE BETTER FOR CUTTING EFFICIENCY?? MAKE 10K

BACK MIGHT ADD DARTS TO MAKE IT MORE FORM FITTING.

FABRIC OPTIONS



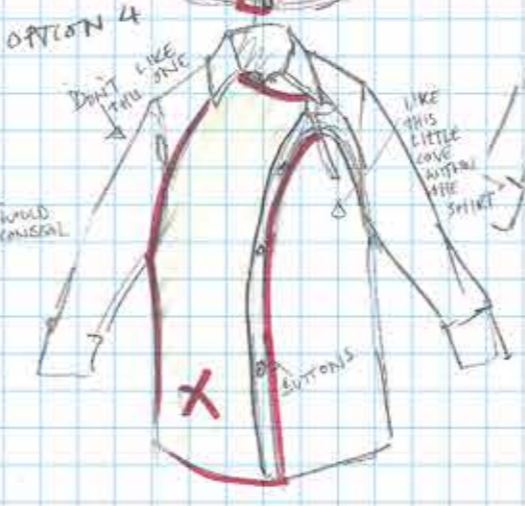
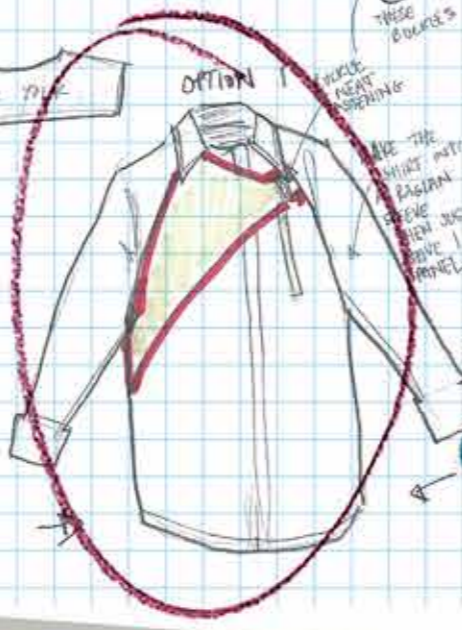
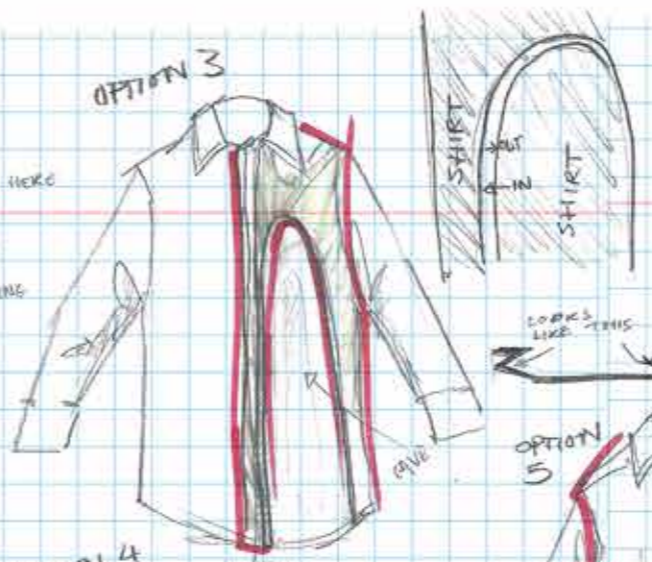
FINE BOPLIN WHITE
MADE IN JAPAN
100% COTTON

WASHED SHIRTING
CANVAS UNDYER
MADE IN JAPAN
100% COTTON

MIKKUSU COTTON
& LINEN WHITE
MADE IN JAPAN
85% COTTON 15% LINEN

MORE CLASSIC SHIRT OF A FORMAL LOOK.

MORE AGED LOOK LIKE MONEY HUNTERS





BASIC RUGBY SHORTS



ELASTIC WAISTBAND

DURABLE FABRIC

CLUB BADGE NORMALLY GOES HERE.

FRONT



HOW DO ELEVATE THESE SHORTS??

- FABRIC
- CUT
- FEATURES
- STYLING

1st LETS PLAY AROUND WITH THE CUT.



SPORTS SHORTS - WIDE TAID



WANTING HELP THEM LOOKING ATHLETIC



THIS IDEA OF HAVING A REALLY LOUD HAND PRINT SHORTS



KINDA WORKS BECAUSE SHIRT IS SIMPLE.



MORE OPTIONS FOR COLOUR BLOCKING. TOP MATERIAL IS MORE TECHNICAL



COULD BE QUITE LOUD WITH THE MESH.

COLOURS



ROWZWEAR SIM

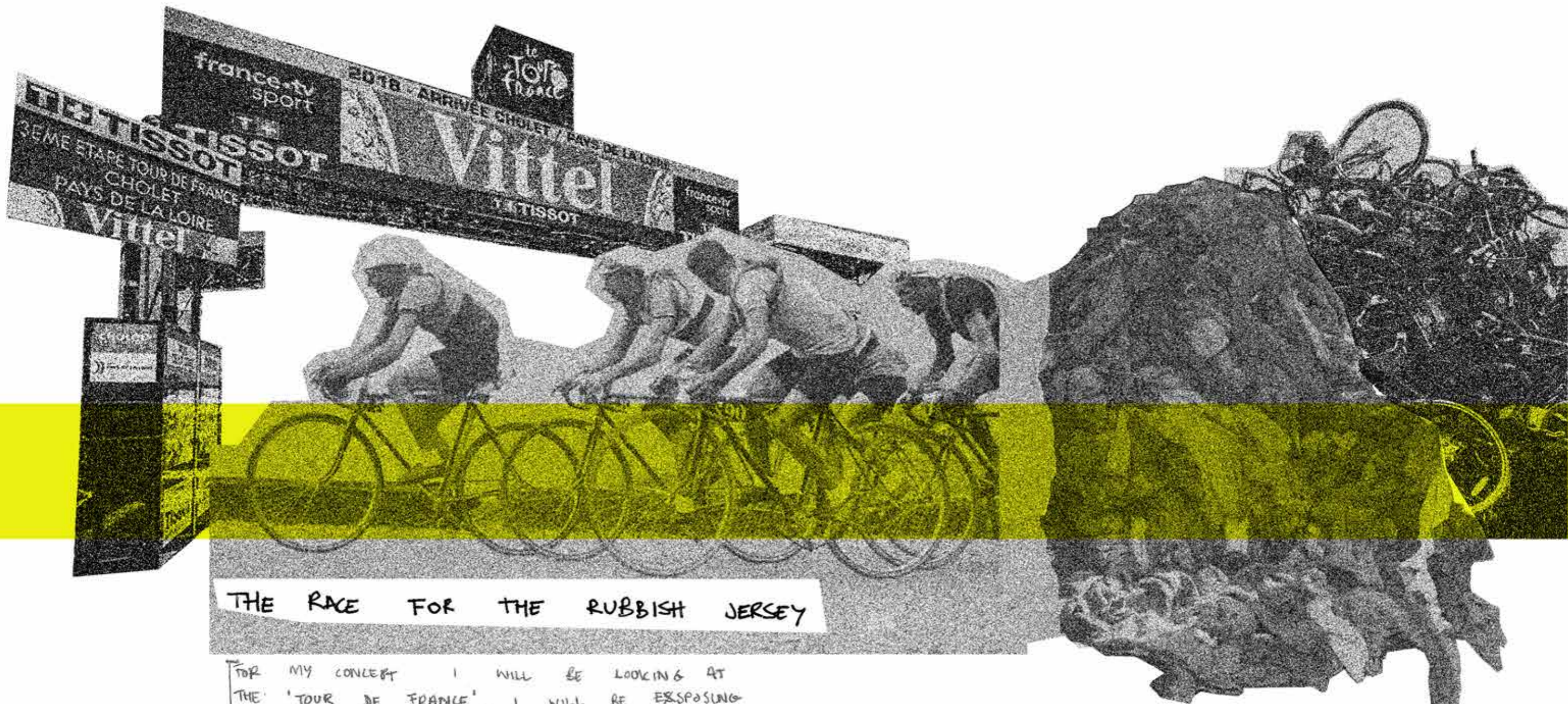
TENSION MAP

WANT THE PRINT TO BE THE MAIN THING



THESE ARE OTHER OPTIONS FOR HAND PRINT MATERIAL.





THE RACE FOR THE RUBBISH JERSEY

FOR MY CONCEPT I WILL BE LOOKING AT THE 'TOUR DE FRANCE'. I WILL BE EXPOSING THE WASTE LEFT BEHIND AND TRYING TO REPURPOSE THE WASTE MATERIAL INTO A COLLECTION.



COLOUR BOARD

FOR MY FABRIC + COLOUR BOARD IT WILL REALLY DEPEND ON WHATS AVAILABLE WITH LEFT OVER FABRIC AFTER THE TOUR. THE 'TOUR DE FRANCE' IS A VERY COLOURFUL EVENT ANYWAY, WITH LOADS OF PRIMARY COLOURS AND BLOCKING.



ALL POLYESTERS LIGHT AND STRETCHY

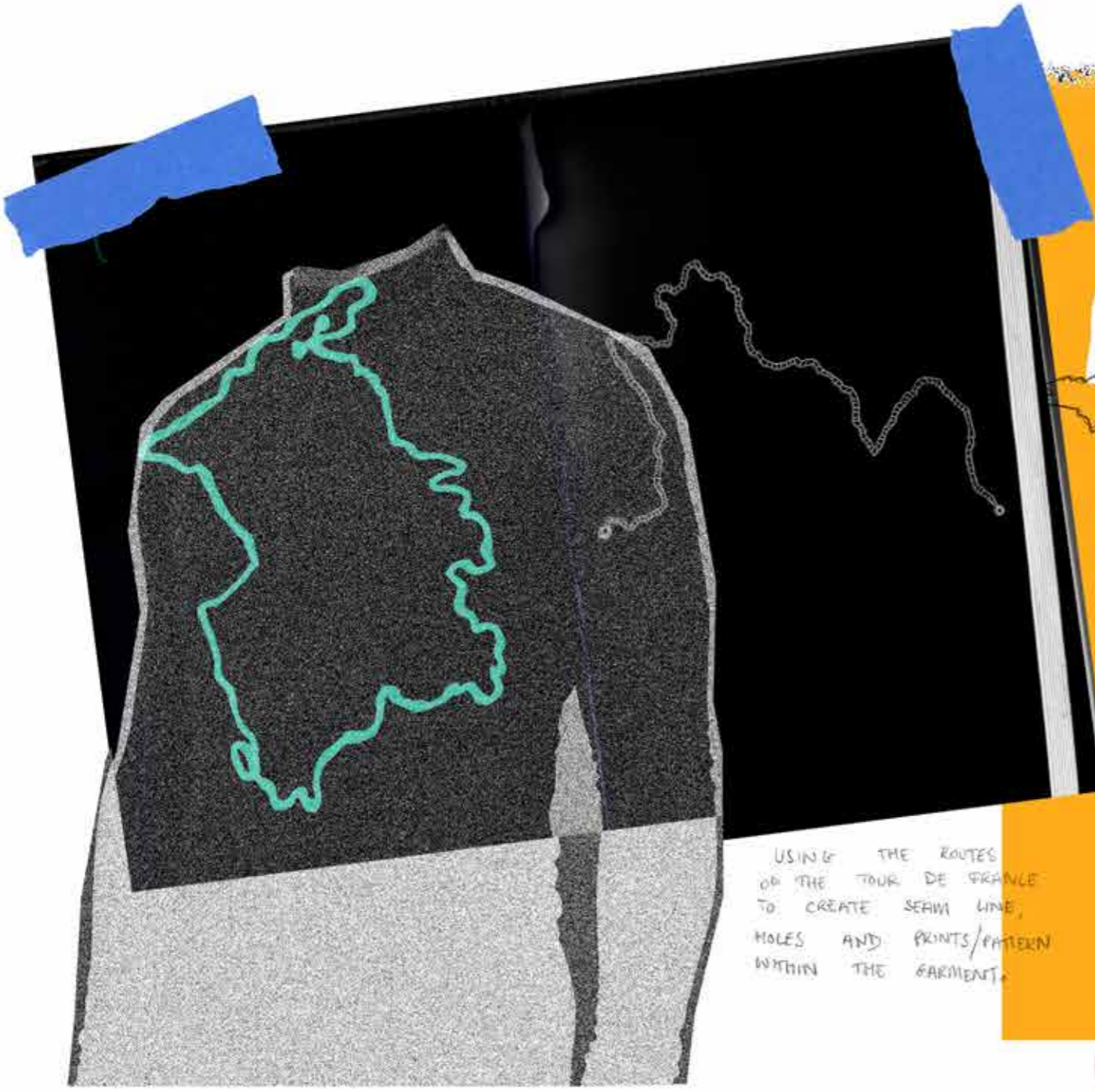
MORE WATER RESISTANT

MESH

TO STRETCH OVER MY FRAMES.

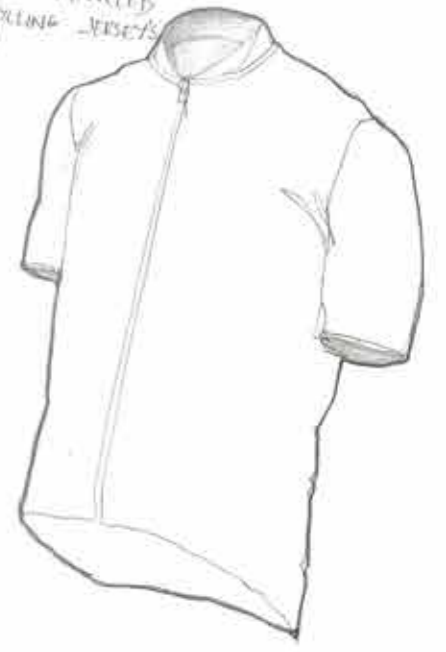
RIBBING OR COULD BE USED FOR UNDER LAYER.

| | |
|--|-----------------------------|
| | PANTONE 2736 C |
| | PANTONE P 1-1 C |
| | PANTONE P 96-4 C |
| | PANTONE 19-4205 TCX Phantom |
| | PANTONE 2286 C |
| | PANTONE P 52-8 C |
| | PANTONE P 144-16 C |
| | PANTONE Yellow C |

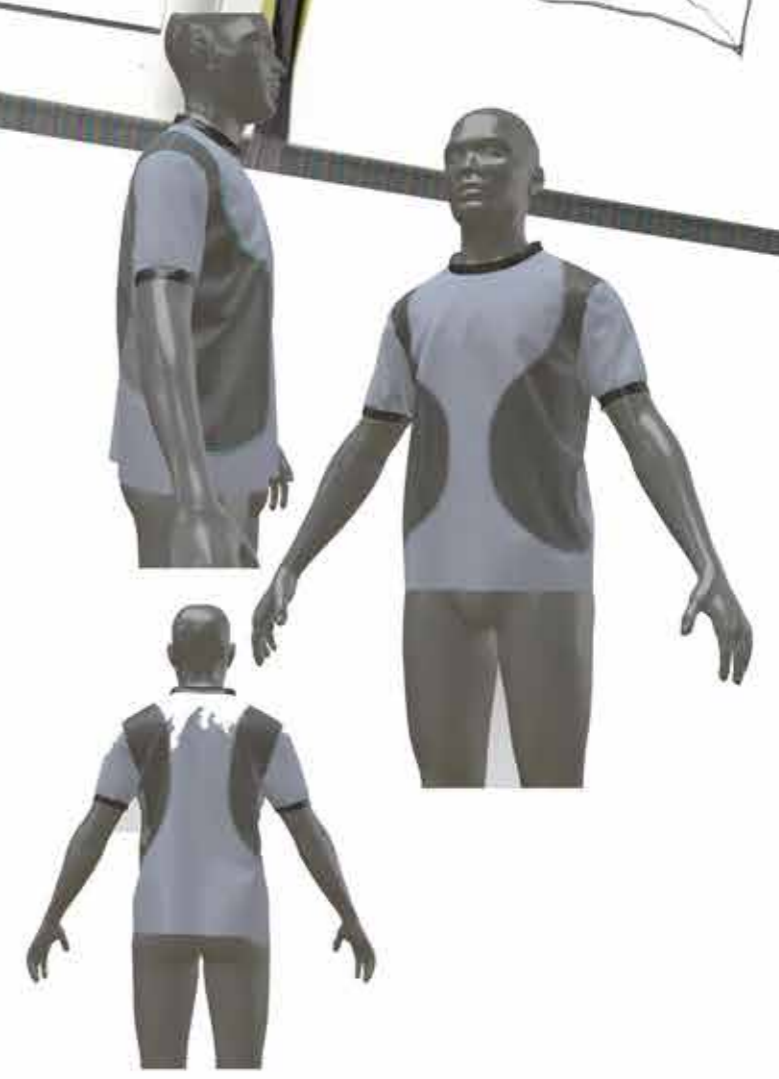


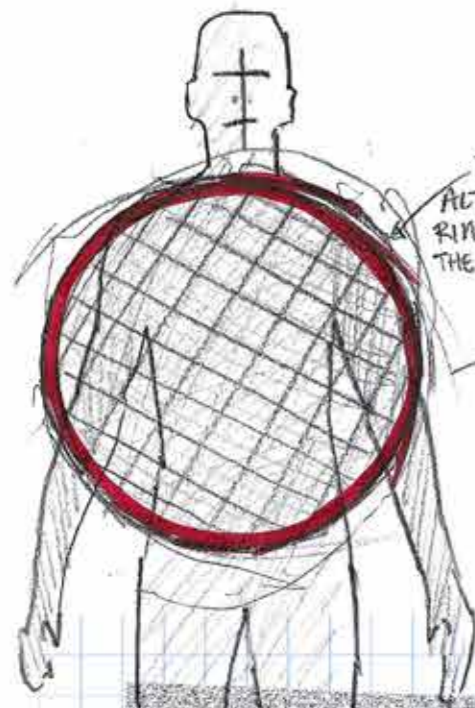
CYCLING JERSEY

100% POLYESTER
LIGHTWEIGHT ZIP
USE RECYCLED CYCLING JERSEYS

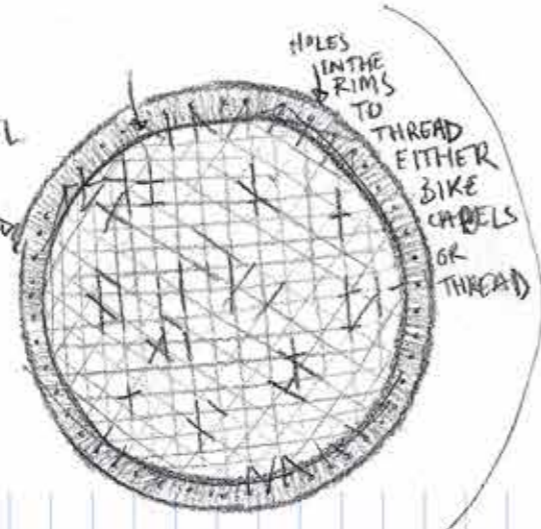


USING THE ROUTES
OF THE TOUR DE FRANCE
TO CREATE SEAM LINE,
HOLES AND PRINTS/PATTERN
WITHIN THE GARMENT.

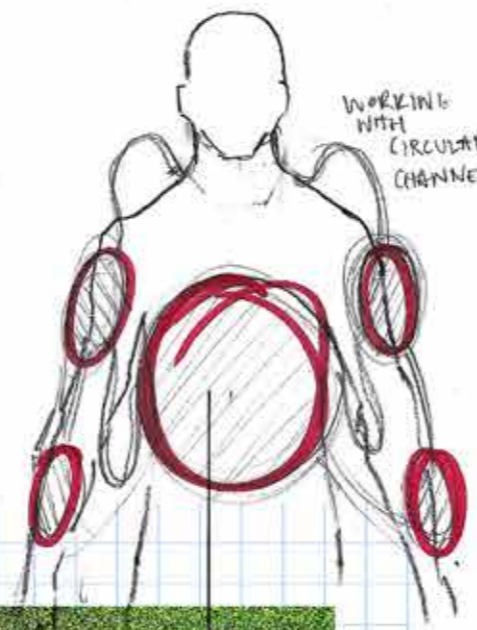




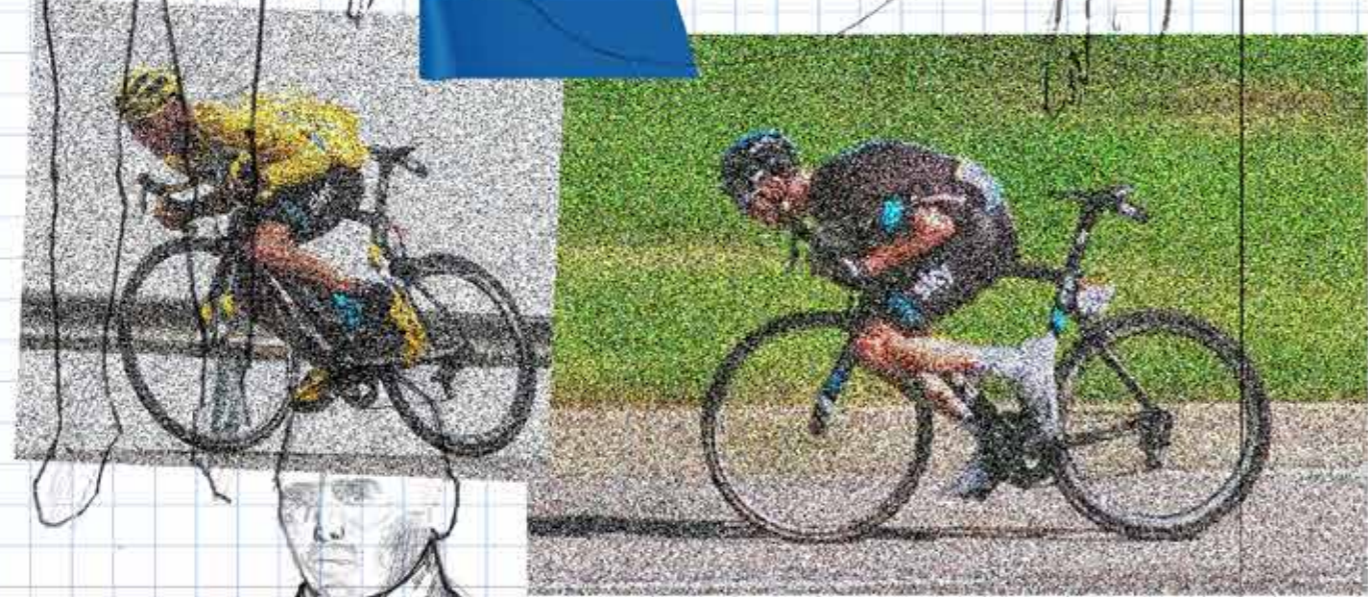
THE ACTUAL RIM OF THE WHEEL



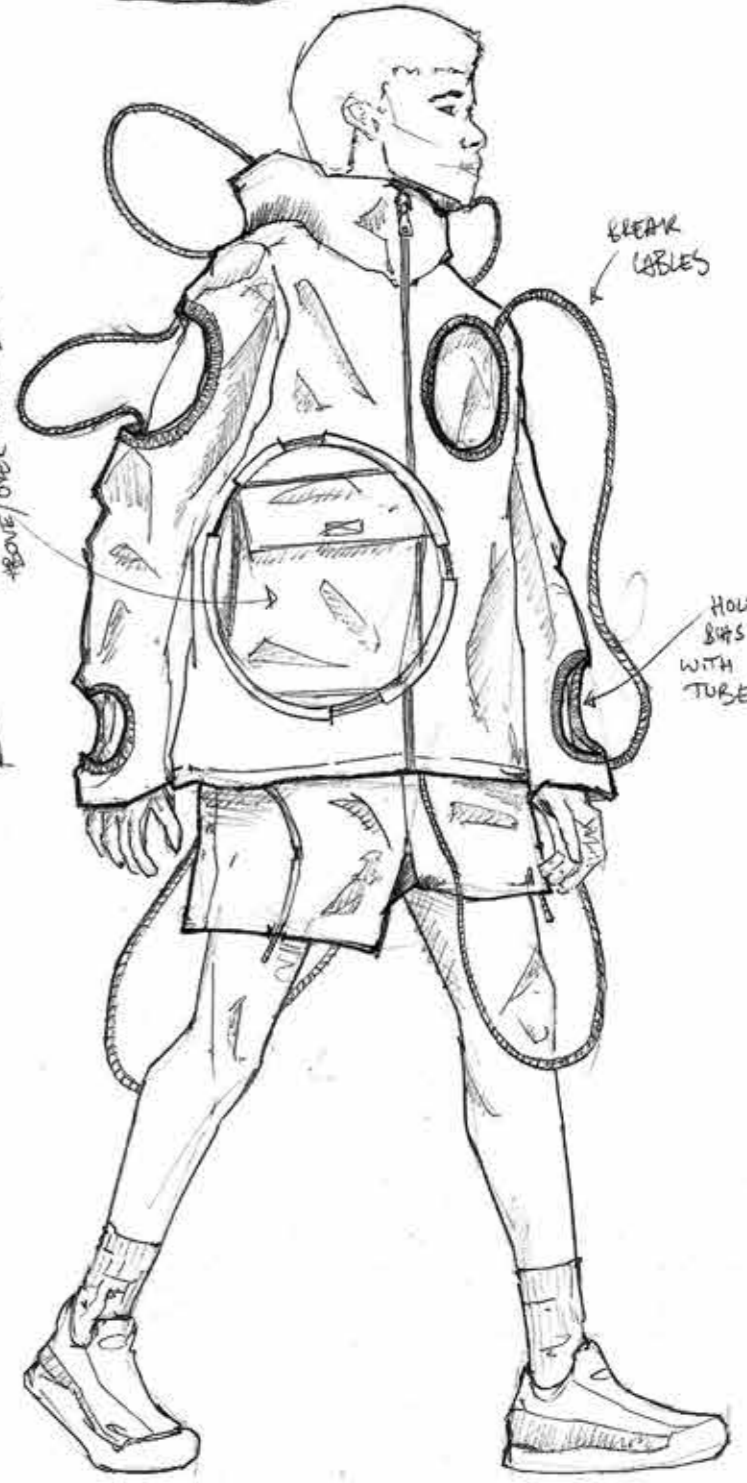
HOLES IN THE RIMS TO THREAD EITHER BIKE CABLES OR THREAD



WORKING WITH CIRCULAR CHANNELS



PATCH POCKET GOES THIS SECTION GOES ABOVE/OVER THE ZIP



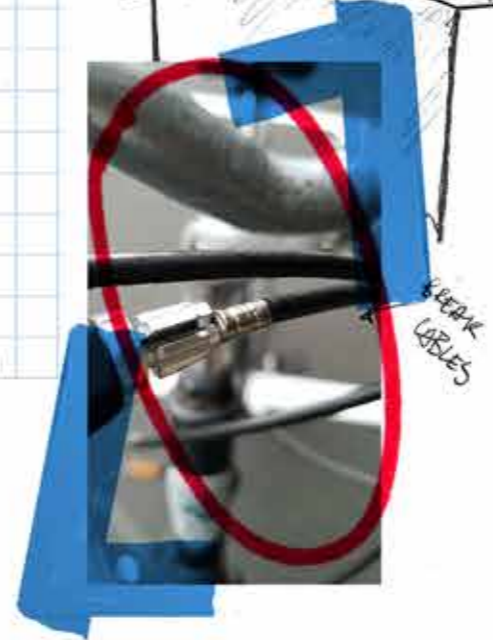
BREAK CABLES

HOLES SHAS SOUP WITH INNER TUBE

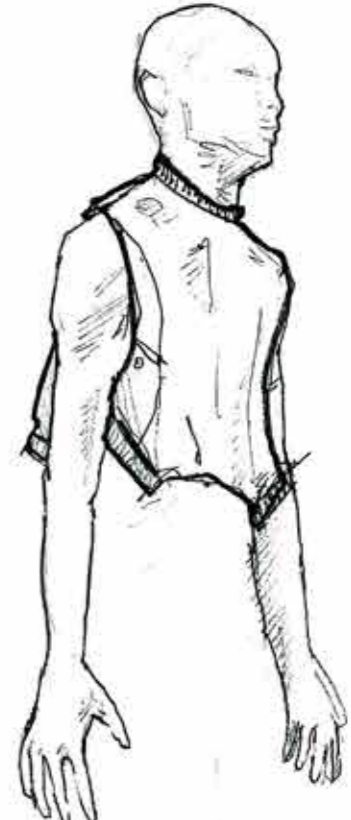
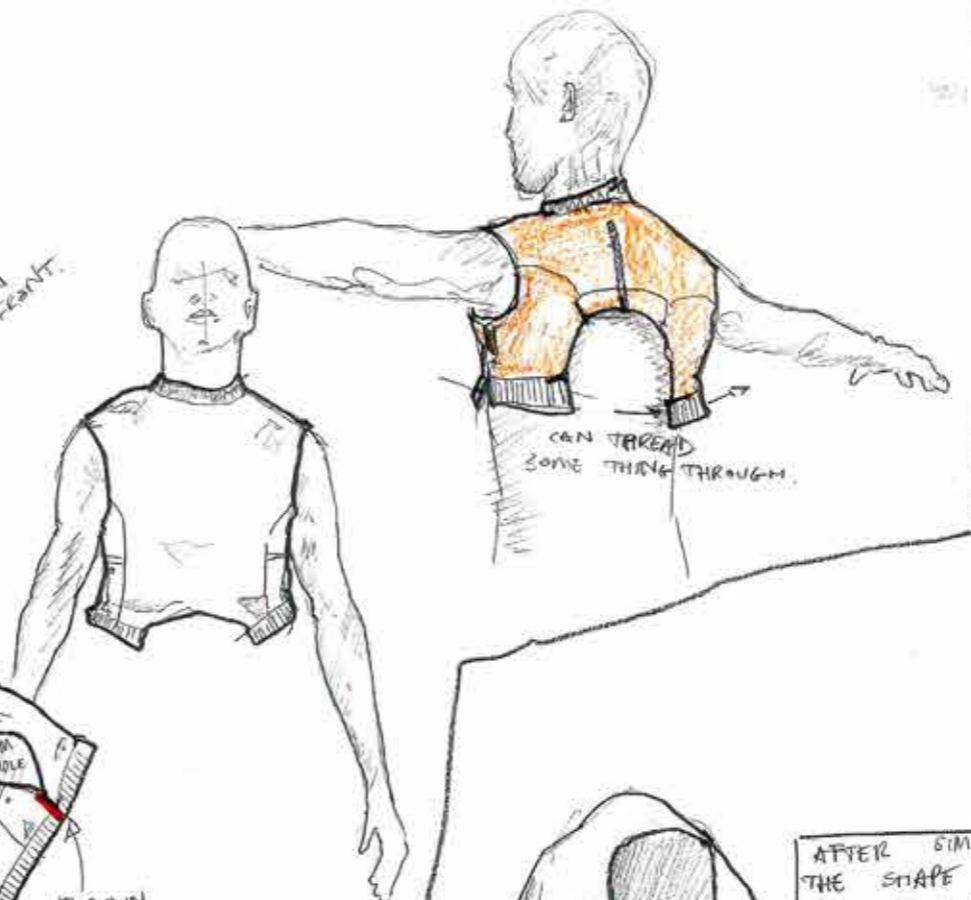
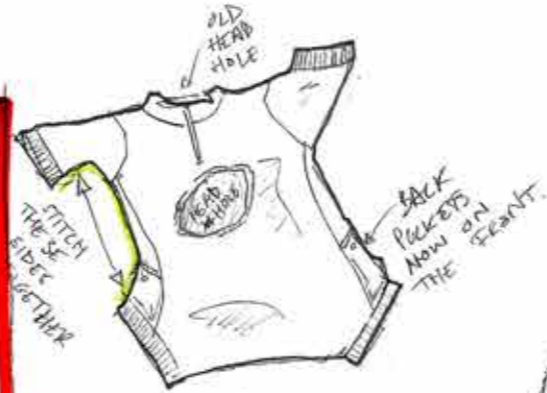
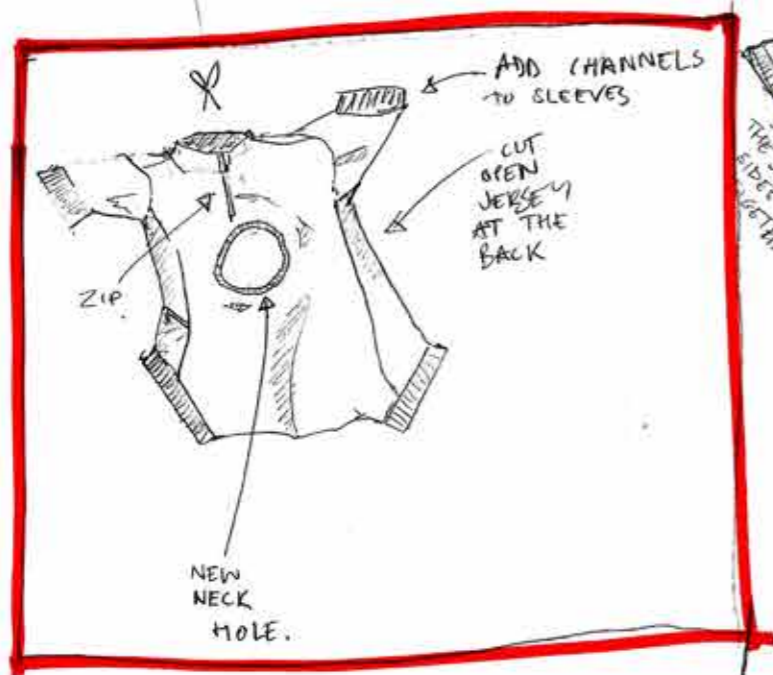


CREATE A GARMENT THAT IS PERFECT ROUND THIS FORM

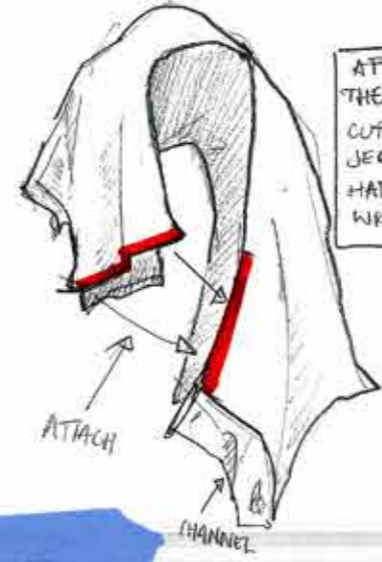
BIG CIRCULAR CHANNEL WITH BRAKE CABLE THREADED THROUGH



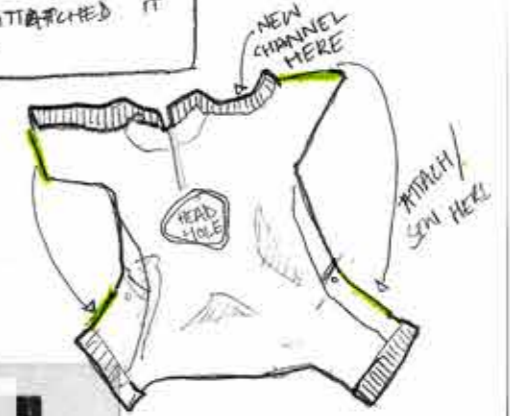
BREAK CABLES



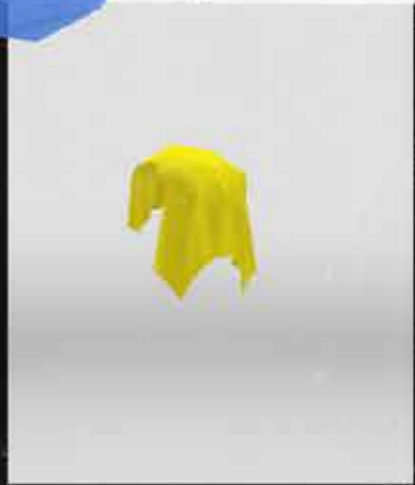
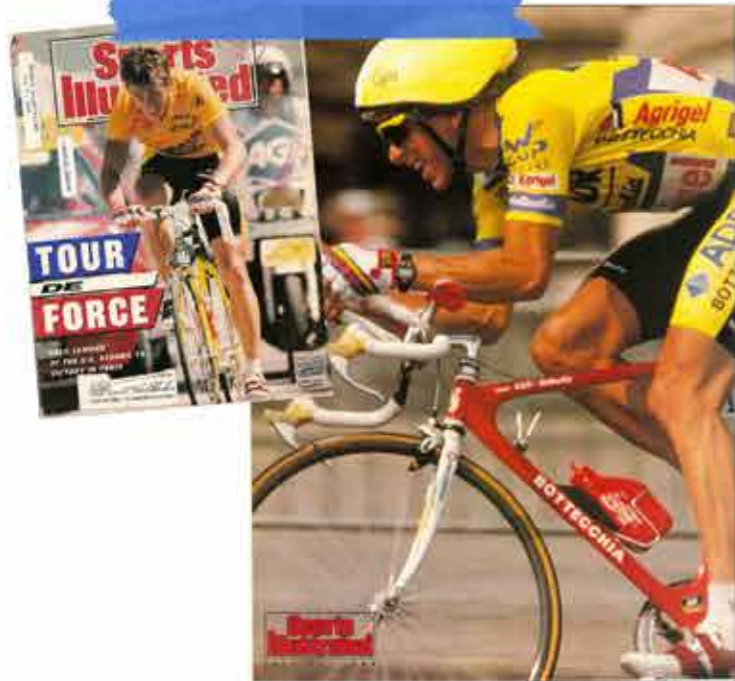
IF SEWN UP I LOSE THE CHANNEL!
UNLESS I JUST TAC IT.



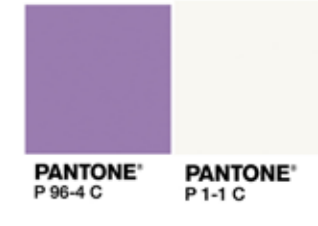
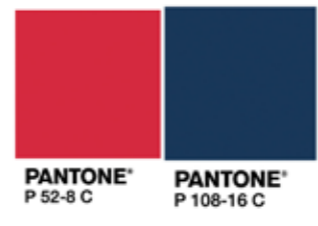
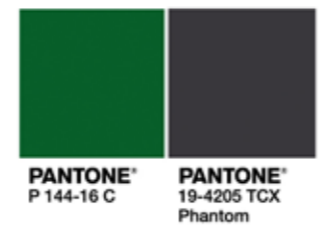
AFTER SIMULATING THE SHAPE OF THE CUT OPEN CYCLING JERSEY I REALISE I HAD ATTACHED IT WRONG



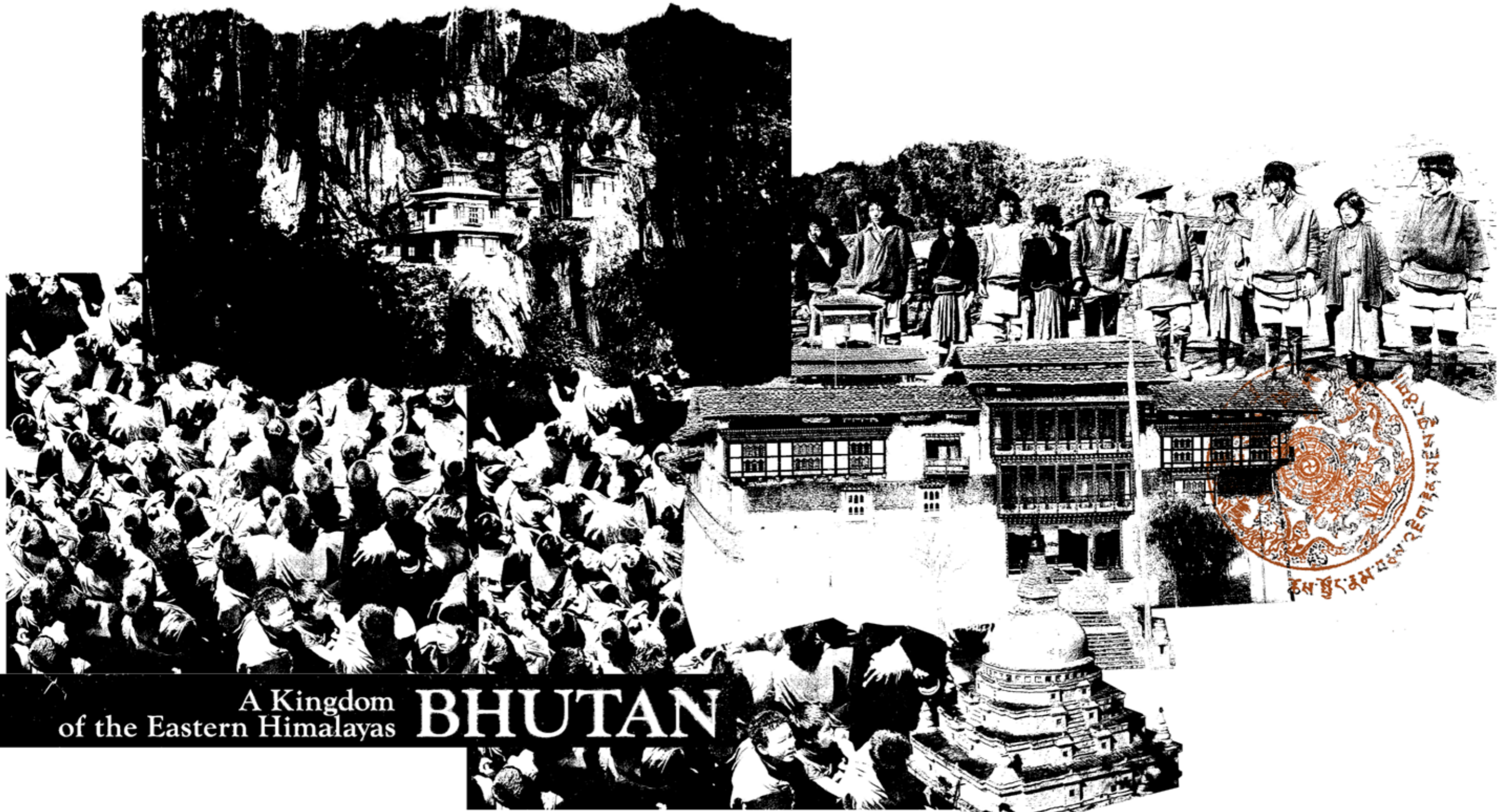
CHANNELS ARE STILL OPEN. TO THREAD STUFF THROUGH.



TECHNICALS







A Kingdom of the Eastern Himalayas **BHUTAN**

BHUTAN THE ONLY CARBON NEGATIVE COUNTRY IN THE WORLD, AS WELL AS BEING THE PROCLAIMED 'HAPPIEST PLACE ON EARTH'. I REALLY WANTED TO EXPLORE THEIR CULTURE/ WAY OF LIFE. THE BOOK 'BHUTAN A KINGDOM OF THE EASTERN HIMALAYAS' WAS A GREAT INSITE TO LIFE IN BHUTAN. KNOWN FOR THEIR STUNNING LANDSCAPES AND TEMPLES. FOR THIS PROJECT I WILL BE DRAWING FROM DIFFERENT ASPECTS OF BHUTANESE CULTURE TO CREATE A CONTEMPORARY DESIGN.





OK NOT SO BASIC BECAUSE I HAVE NO IDEA IF THERE ARE SEAMS OR ITS ONE WRAP??

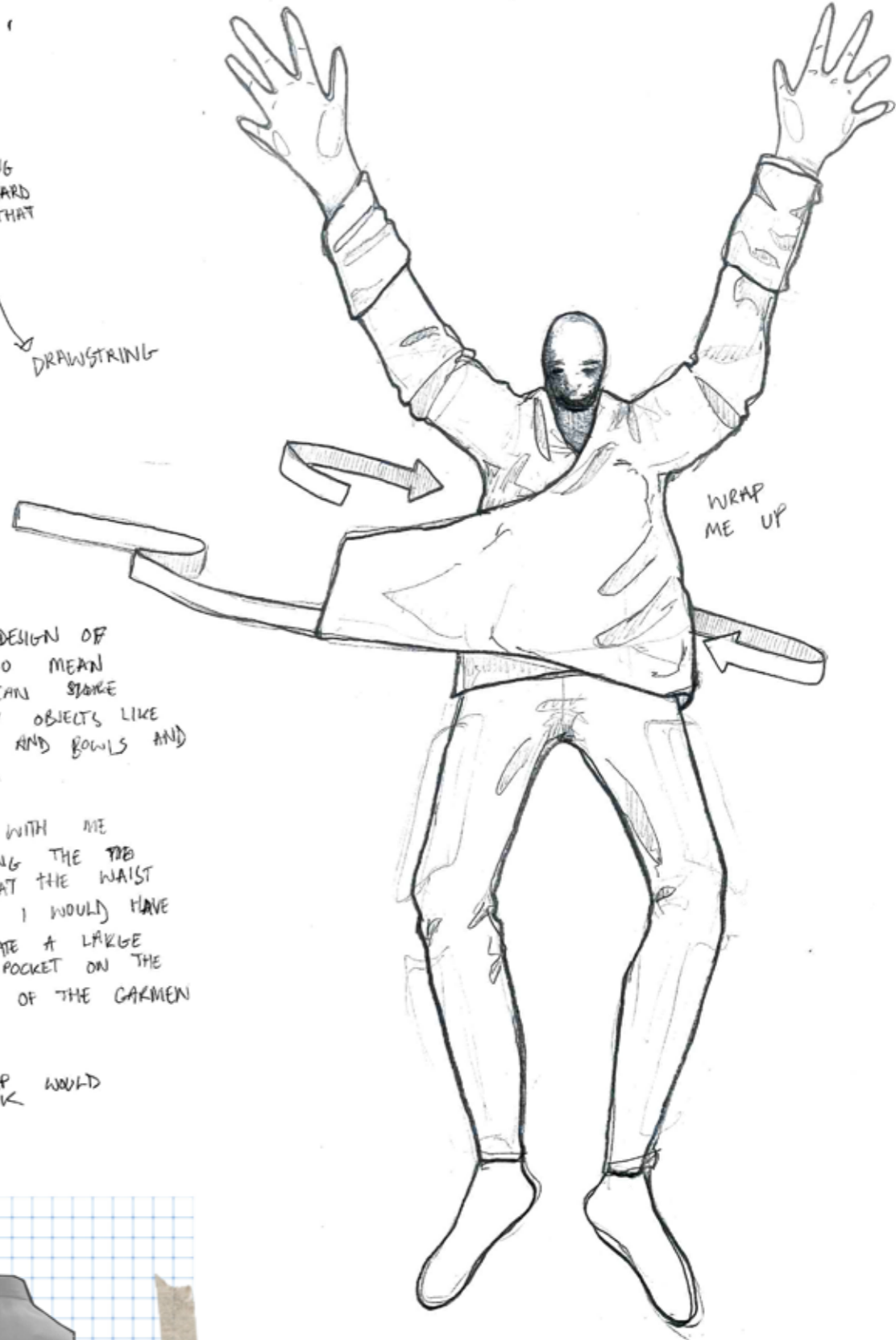


REALLY WANT TO KEEP THE SAME BOXY FIT OF THE GO BUT BY ME REMOVING THE BELT HARD TO KEEP THAT SHAPE



THE DESIGN OF THE GO MEAN THEY CAN STORE CARRY OBJECTS LIKE KNIFE AND BOWLS AND STUFF.

BUT WITH ME REMOVING THE TTB BELT AT THE WAIST MEANS I WOULD HAVE TO CREATE A LARGE CHEST POCKET ON THE INSIDE OF THE CARMEN

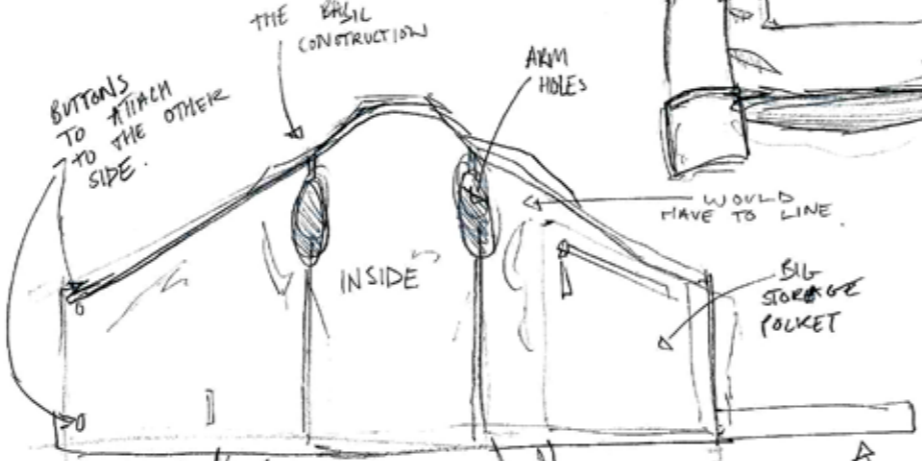


TURN UP SLEEVES

WANT IT TO FINISH MID

SKIRT NOT REALLY THING

FOR LOOK MID WOULD GOOD IS LAYER



FIRST MAKE

GUESS IT.

ON

HOW

YOU WOULD

DO IT

DONT

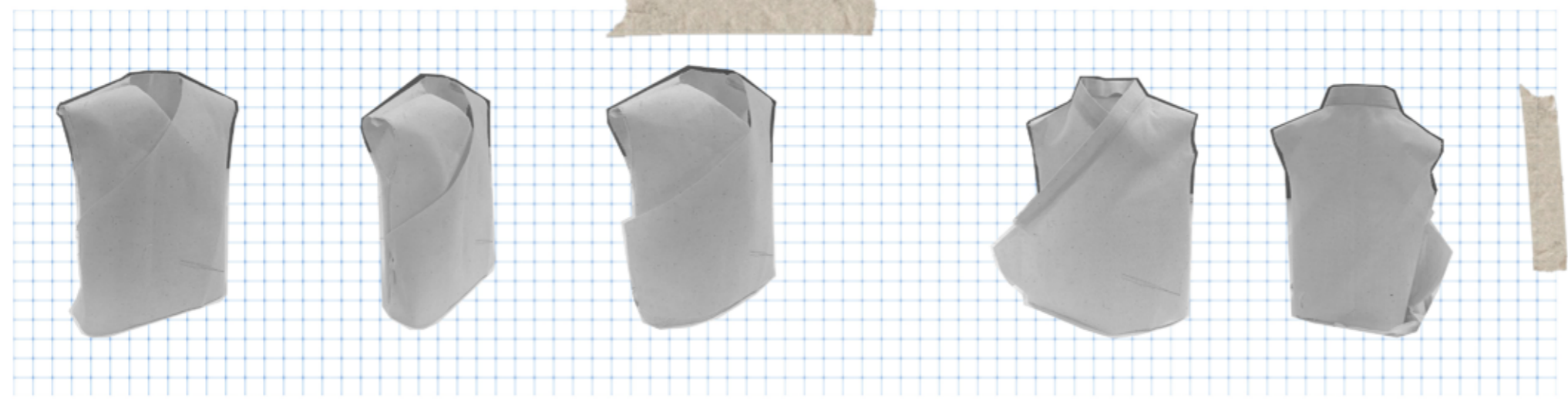
KNOW

HOW

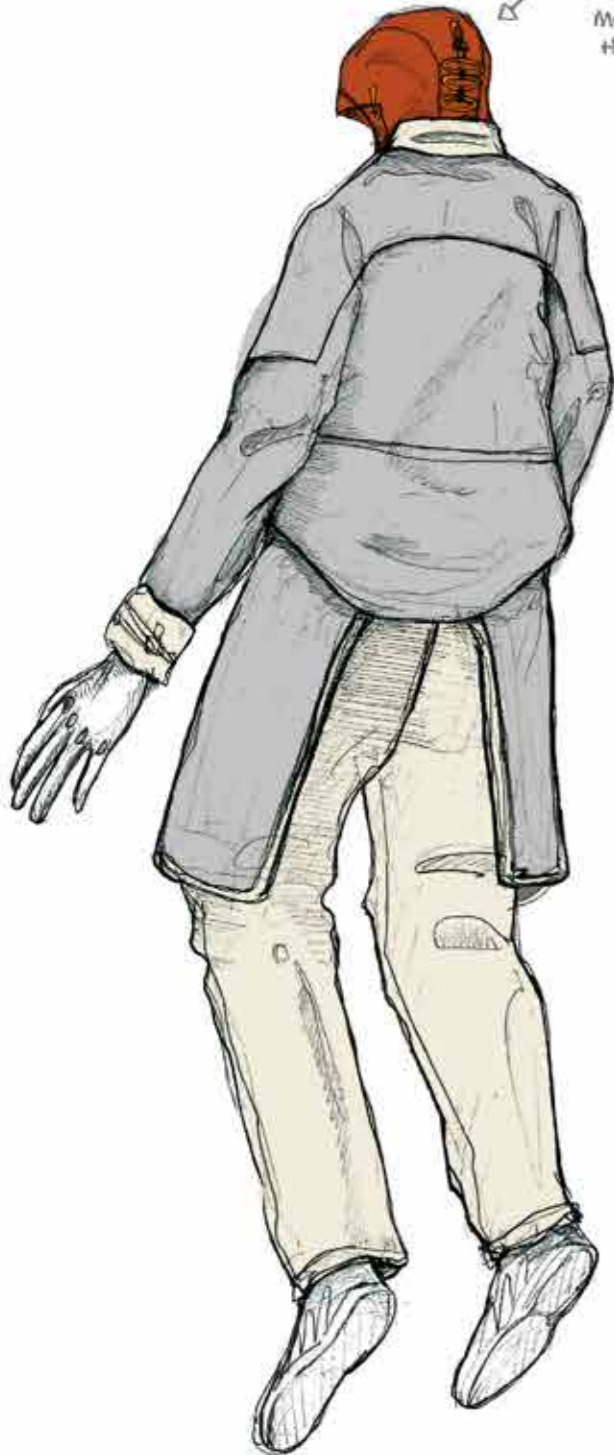
THE WRAP

WOULD

WORK



HOOD COLOUR AND SHAPE INSPIRED FROM MONKS ROBES AND HOW THEY DRAPE.



BIG ZIP POCKET INSIDE.

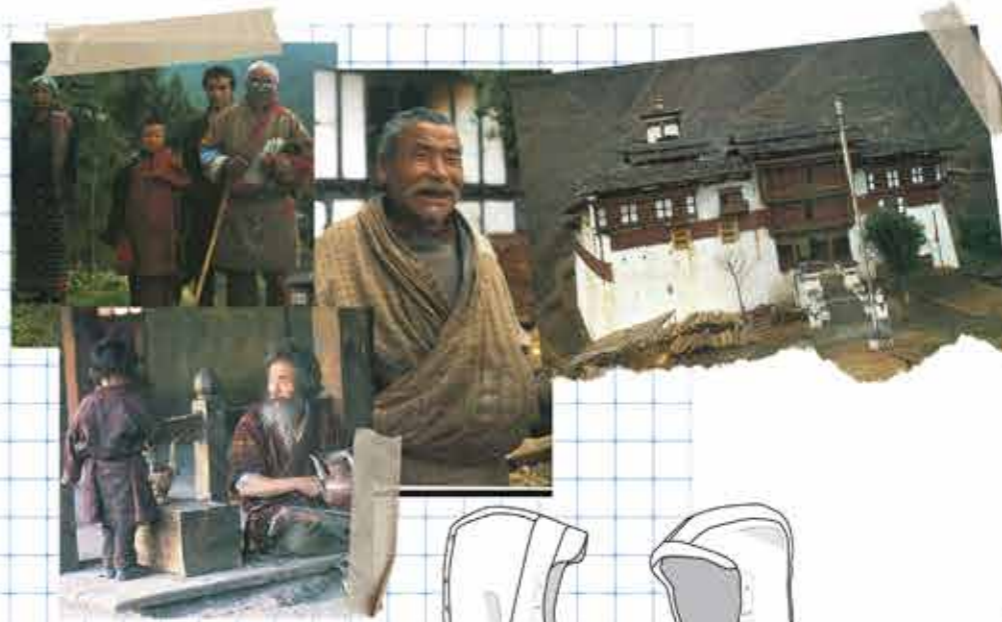


POPPERS TO ATTACH THE PIECE SO IT DOESN'T FALL DOWN

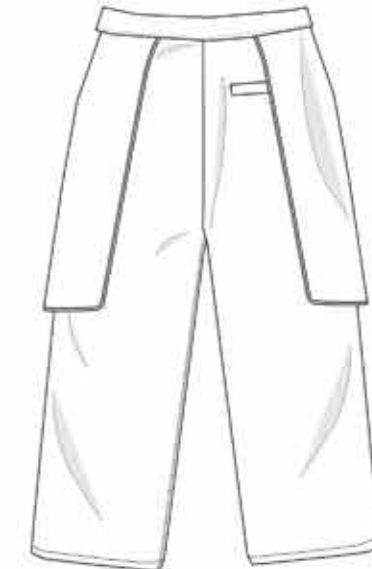
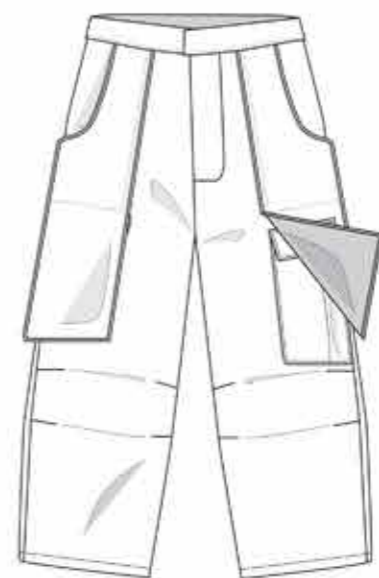


WRAP JACKET INSPIRED FROM THE GHO

ZIPS HERE SO YOU CAN DECIDE THE SILHOUETTE - EITHER HAVE IT OPEN AND BE ABLE TO ACCESS THE SIDE POCKET OR CLOSED FOR A CLEANER LOOK.



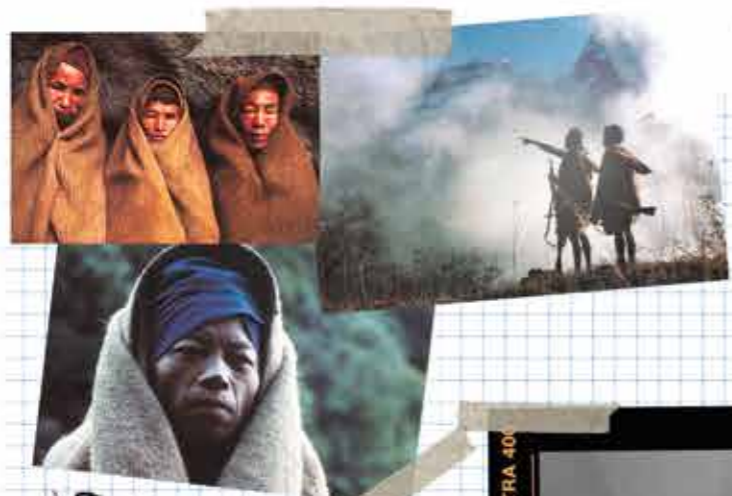
COLOUR PALETTE FROM TEMPLES



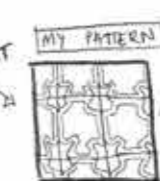


WHEN RUGBY LADS BECOME HONEY HUNTERS

PRE-COLLECTION

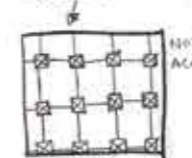


TRANSLATE IT INTO A REPEAT PRINT

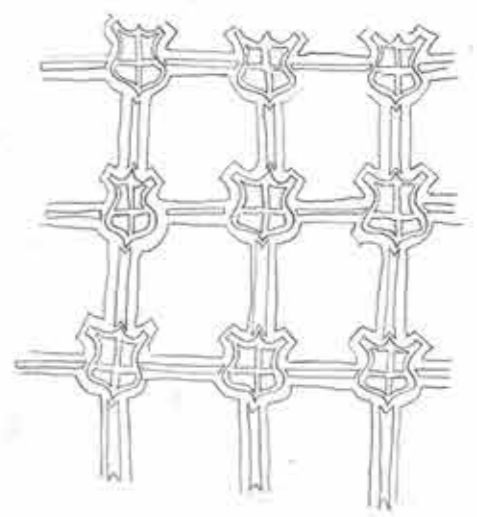


MY PATTERN
WOULD WORK AS A TIE
EMBROIDERED HILL WORK BEST
AS PRINT
LARGE SCALE

LIKE NEPALI JUDMENTS PRINT



NOT ACCURATE



REALLY LIKE THIS MORE RAW LOGO / BADGE
MANY THE LOGOS TO SOMETHING MORE RELATED TO THE PROJECT
PRINT OBJECTS/SYMBOLS RELATED

USE TALISMANS!!
TALISMAN
MY TALISMANS



WANT MY PATTERN TO BE HAND PRINTED LIKE THESE FABRICS



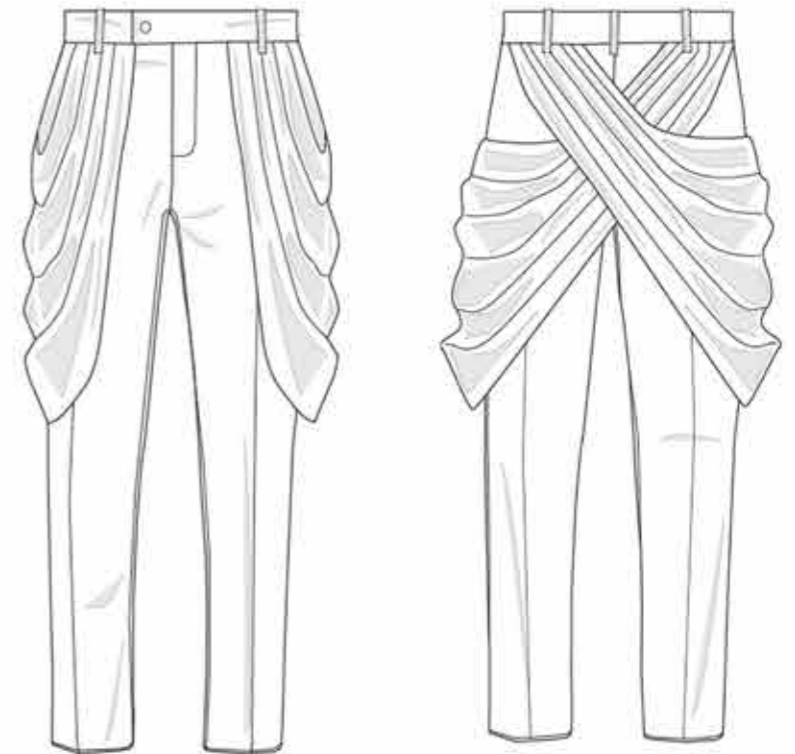
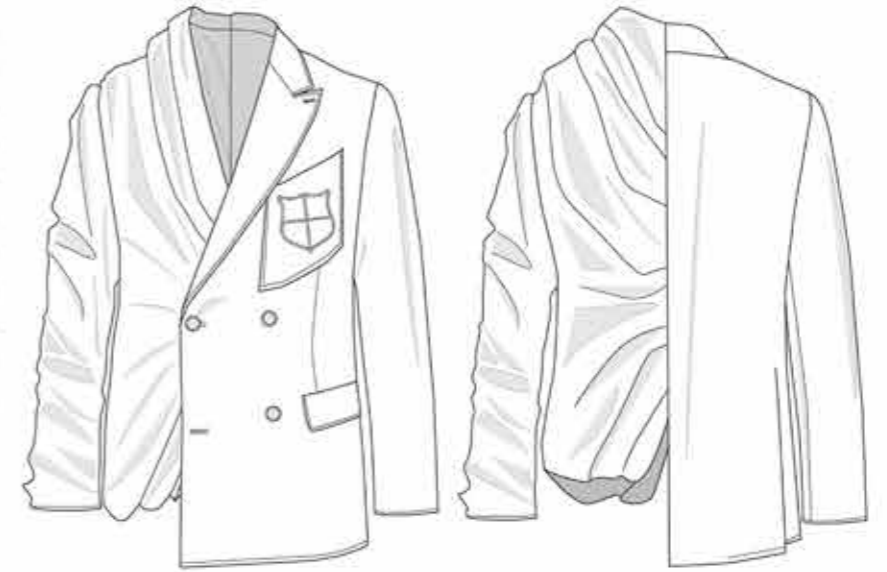


+ DOUBLE BREASTED BLAZER.
 - ONE SIDE STRUCTURED OTHER
 HALF REALLY UNSTRUCTURED
 - CREST ON FRONT POCKET
 - 2 POCKETS ON FRONT
 - WIDE LAPEL

+ TAPERED TROUSERS
 - HEAVILY DRAPPED FABRIC
 ATTACHED INTO WAISTBAND
 - PLEATED

+ FORMAL SHIRT
 - EXTRA PANELS ON BOTH
 SIDES OF THE FRONT
 TIED IN THE MIDDLE.

+ TIE





- + DOUBLE BREASTED BLAZER
- PEAK LAPEL
- NO PADDING IN SHOULDER GIVES A MORE RELAXED FIT
- 3 POCKETS ON FRONT
- TIE ON SIDE ATTACHES TO THE BACK SEAM
- DOUBLE VENT ON THE BACK



- + WIDE LEG TROUSER
- CROPPED LEG INSPIRED FROM HONEY HUNTERS ON CLIFFS
- SINGLE PLEATED
- DRAPED FABRIC ATTACHED THROUGH BELT LOOPS

- + OXFORD SHIRT
- DOUBLE PLEAT ON BACK YOLK
- FRONT PATCH POCKET
- CREST EMBROIDED ON FRONT POCKET

- + TIE



MANITONE
 433 C
 MANITONE
 15-0995 TOK
 ON OUN



+ DOUBLE BREASTED BLAZER

- WIDE LAPEL TO ECCEUTATE A MORE ATHLETIC BODY SHAPE
- PADDED SHOULDERS
- PLEAT AT THE TOP OF SLEEVE
- 3 POCKETS ON OUTSIDE
- PEAK LAPEL

+ SLIM FIT SOFT TROUSERS

- 4 POCKETS
- ADJUSTERS ON THE INSIDE OF THE WAISTBAND
- CLEAN FINISH ON WAISTBAND
- 2 DARTS ON THE BACK

+ SCARF

- PATCH POCKET
- BIAS BINDING & ROUND EDGES
- DOUBLE LINED

+ HEAD SCARF

- CREATES A DIFFERENT SILHOUTTE
- HAND PRINTED REPEAT PATTERN

