

SENT WITH LOVE- HAPPINESS IN AN ENVELOPE

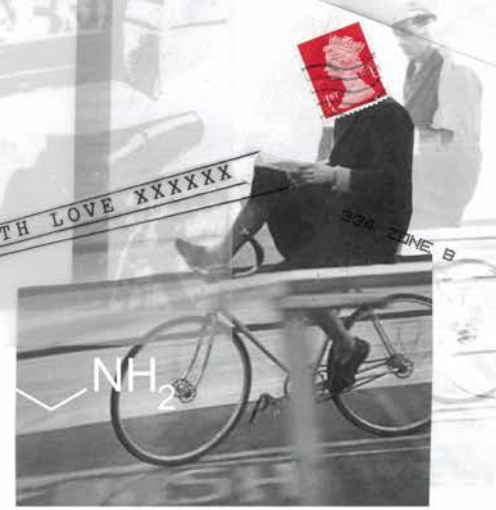
SAONA TOMLINSON

The starting idea of my collection was sparked in early 2020 whilst I was living away from home and feeling a little bit homesick; when a letter arrived in the post from my family it immediately filled me with joy and almost felt like the handwritten letters were a physical extension of home! When it has never been easier to send a message online, there was something different about receiving a physical letter as it kicked off the start of my love for the classic 'snail mail' and this is what has inspired my graduate collection - "Sent With Love - Happiness In An Envelope".

A running theme throughout my final project is connection and connecting people together. Research has taken me exploring the postal system and how they can link people together, my family connections and most importantly WHY do I feel so happy when receiving these letters?

Since the original spark of my concept over a year ago, my attitude towards my concept has evolved. Originally I feel like the idea stemmed from the sadness of being homesick whilst living overseas away from family and friends. But over time, it has turned into such a positive feeling and memory looking back as it just showed that I really do appreciate and love them. I think this has changed my attitude towards my whole collection, as it evolved into wanting to know why it makes me happy which is something I want to continue after I graduate and hopefully can pass this feeling to others by posting letters to send happiness to them.

The main form of how my concept has evolved is due to the pandemic lockdowns, many others can relate to being away from family and wanting to reconnect physically with loved ones. This is why I feel like incorporating my own family photos and feelings into this project has become more meaningful as this year many others have had these same feelings of joy when something came through the mail... even if it was just an online shopping order!!





This Swiss card celebrates 25 years of the Universal Postal Union, whose first meeting happened in Switzerland in 1874.



AM



little too large to be comfortably handled by the postmen of the day, so a second issue 43 mm high and shorter at 121 x 75 mm (4 3/4 x 3 in), which did not stick out of the postmen's bundle, replaced the original card. Large sections of the British public proved to be more different from their Austrian and German counterparts and bought the cards by the million—some 700 million, in fact, were used during the first year. There is even alleged to have been some dissatisfaction among the postmen of the day, undoubtedly weighed down during their deliveries (as they would have the public believe) by this large increase in the amount of mail to be carried.

However, not all sections of the public welcomed the postcard. Many objections were raised in connection with the open nature of the messages they carried. Those in opposition felt that having the contents of the correspondence visible by all to see made the cards liable to abusive or potentially damaging usage. Offensive messages could be conveyed straight into the Victorian household, unshielded from prying eyes, and tradesmen could claim payment for accounts that did not necessarily exist from persons too afraid of having their reputations damaged by such open requests to make a fuss. Indeed, several cases of libel did find their way into the law courts. Such isolated incidents aside, the introduction of a

an enormous variety of services, but it is also linked throughout the world, under agreements negotiated by the Universal Postal Union at Bern in Switzerland, with the Post Offices of all other countries. The Union performs the service of insulating countries, by a governmental receipt for our money, and the receipt is in effect a negotiable order for money (and therefore value) to countries that these are not prepared to accept.

First, however, it will be interesting to look at the various categories of stamps. Some of them, as will be seen, are included in their own section that, not surprisingly, very few countries adopted them. Others, such as postage stamps, are considered by many postal organizations to be outside the scope of their own postal laws.

Communications from another very large group, however people, events and anniversaries, occasionally they continue in ordinary use for a very long time, and thus no hard-and-fast dividing line is possible. Of these is a new category of historical postage stamps, which are issued in their own country of issue, but which are usually intended to raise money for some particular cause or to commemorate some event.

Postage stamps are temporary issues, often hastily prepared and usually resulting from a shortage of ordinary stamps or from a change in government, and are not usually retained for long.



EXPLORING PERSONAL CONNECTIONS TO RECEIVING MAIL



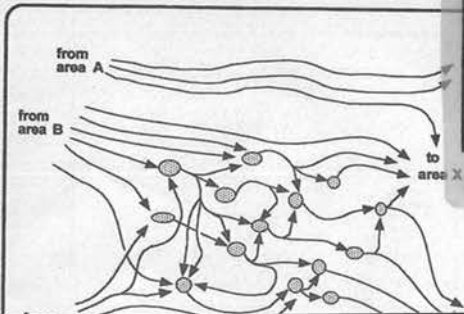
CHAPTER TWO
THE PURPOSES AND USES OF STAMPS

It is very easy to write as one writes as one, if it is wanted to be read by the recipient. It is not so easy to write as one writes as one, if it is wanted to be read by the recipient. It is not so easy to write as one writes as one, if it is wanted to be read by the recipient.

WHEN AWAY FROM HOME,
CAN RELIEVING MAIL FEEL
LIKE HUMAN CONNECTION???

140

THE EMOTIONAL BRAIN



FAMILY CONNECTIONS FAMILY CONNECTIONS
 FAMILY CONNECTIONS FAMILY
 FAMILY CONNECTIONS
 CONNECTIONS
 FAMILY CONNECTIONS
 FAMILY CONNECTIONS FAMILY
 FAMILY CONNECTIONS FAMILY CONNECTIONS
 CONNECTIONS
 CONNECTIONS
 FAMILY CONNECTIONS FAMILY CONNECTIONS
 CONNECTIONS

FIGURE 6-9
 Examples of Anterograde and Retrograde Transport
 in the Thalamo-Amygdala Pathway.

The top photograph shows anterograde labeling of terminals in the lateral amygdala after an injection of a tracer in the auditory thalamus. The bottom photograph shows cell bodies in the auditory thalamus retrogradely labeled by an injection of a tracer in the lateral amygdala. The labeled cells are the bright white structures that form a triangular region. Note the large size of the labeled cells compared to the terminals above. The two images are black-and-white photomicrographs of dark-field illuminated brain sections taken through



196... aggressive...
 ...good...
 ...office...
 ...that mediate...
 ...them. But without good...
 ...emotional networks is...
 ...Fortunately, there is...
 ...It is called fear...
 ...conditioning is and why it is so...
 ...conditioning, it has been possible...
 ...neurons and trillions of...
 ...behavior.

27/1/19
 Royal Mail
 20/01/2019
 15:04:28
 Hi Sam
 Love from G+S

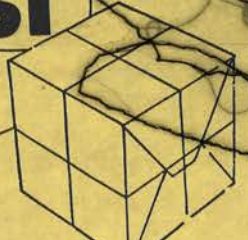
From the Ball Falls

neighbor's dog bites you, you will probably be wary of the dog by his property. His house and yard, as well as the dog itself, may become emotional stimuli for you because of the association with the unpleasant experience. This is fear conditioning. It turns meaningless stimuli into warning signs, cues for potentially dangerous situations on the basis of past experience with similar situations.

Classical fear conditioning experiments involved placing a rat in a small cage. A sound then preceded a mild electric shock to the feet. After very few pairings, the rat began to act afraid. The shock, the rat begins to act afraid. The rat stops dead in its tracks and adopts a crouching posture—crouching down and remaining motionless. Rhythmic chest movements required for breathing. In addition, the rat's fur stands on end, its blood pressure and heart rate rise, and

Post

Connections
 Connections
 Connections
 Connections
 Connections



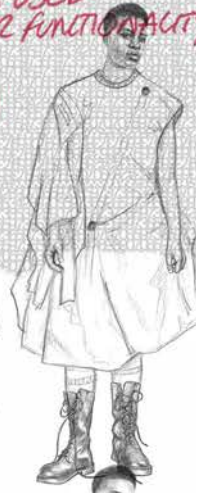


SUBTRACTION
PATTERN
CUTTING
↓

USING STAND
WORK TO FORM
SHAPES



DISKS USED
FOR FUNCTIONALITY



DISK PULLS
WITH STRING



STANDWORK
DRAPE

FORMING
SHAPES



CONSIDERING
STRING
AND DRAPE
UKMail

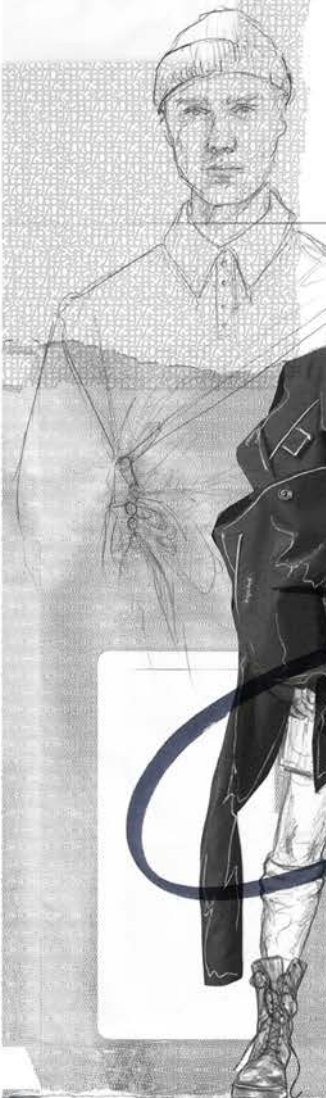


ROYAL MAIL SACK STANDWORK



Valid for items up to:
240mm Long
165mm Wide
5mm Thick
100g Weight

03457 740 740
www.royalmail.com
03456 000 606



LAYERING
SYSTEMS WITH
DRAPING

...of today's view postcards.
Cards bearing small illustrations are also
valued to have been made available
to the troops involved in the Franco-
Prussian War of 1870, and so it seems
that mainland Europe was the first area
to take this initiative in the matter of the
ornamental decoration of cards. The strict
censorship governing their use in Great
Britain and the United States played a
major part in the subsequent later devel-
opment of the card in two countries when it
was not postcard publishing.
An example of decades the
card started to establish
mainland Europe. Vigi-
lance, holiday excursions,
events proliferated, and
were on the reverse
to British cards with
... were all being produced.

... that were to appear ten to fifteen
years later, and as many were thrown
away (because the collection of them
had not yet become established as a
pastime), these early illustrations are
view in large numbers.
be difficult to find today.
Since the Great Exhibition of 1851
held at the Crystal Palace in London had
become very popular with the general
public, and suggested that the
commemorative postcard
in conjunction with the exhibition
envelopes had been used as
at the 1851 exhibition, the
similarly offered to the public
in Europe during the
Exhibition of 1882, where the official
hearing a great vogue was seen on
address side, placed centrally on the
... than

SS IN AN ENVELOPE
SS IN AN ENVELOPE

LOPE
SS IN AN ENVELOPE
SS IN AN ENVELOPE

SS IN AN ENVELOPE
E HAPPINESS IN AN
NESS IN AN ENVELOPE
S IN AN ENVELOPE
N ENVELOPE

SS IN AN ENVELOPE
APPINESS IN AN
E HAPPINESS IN AN ENV
INESS IN AN ENVELOPE
VELOPEHAPPINESS IN AN
SS IN AN
E

SS IN AN ENVELOPE
SS

NVELOPE HAPPINESS
VELOPE HAPPINESS

AN ENVELOPE HA
N AN ENVELOPE

SS IN ENVE
SS IN ENVI

LOPE P
NES



THE

We can
to post
letter l

We
its dest
the cor
begin v
contin
letters
and vil
put in
each b
train o
somev
other s
perhap
on its
more s
arrang
address
office i
in spar
boat to

The
cont
is of a
many
Nde or

U.S. PO
MILIT
POST
TON

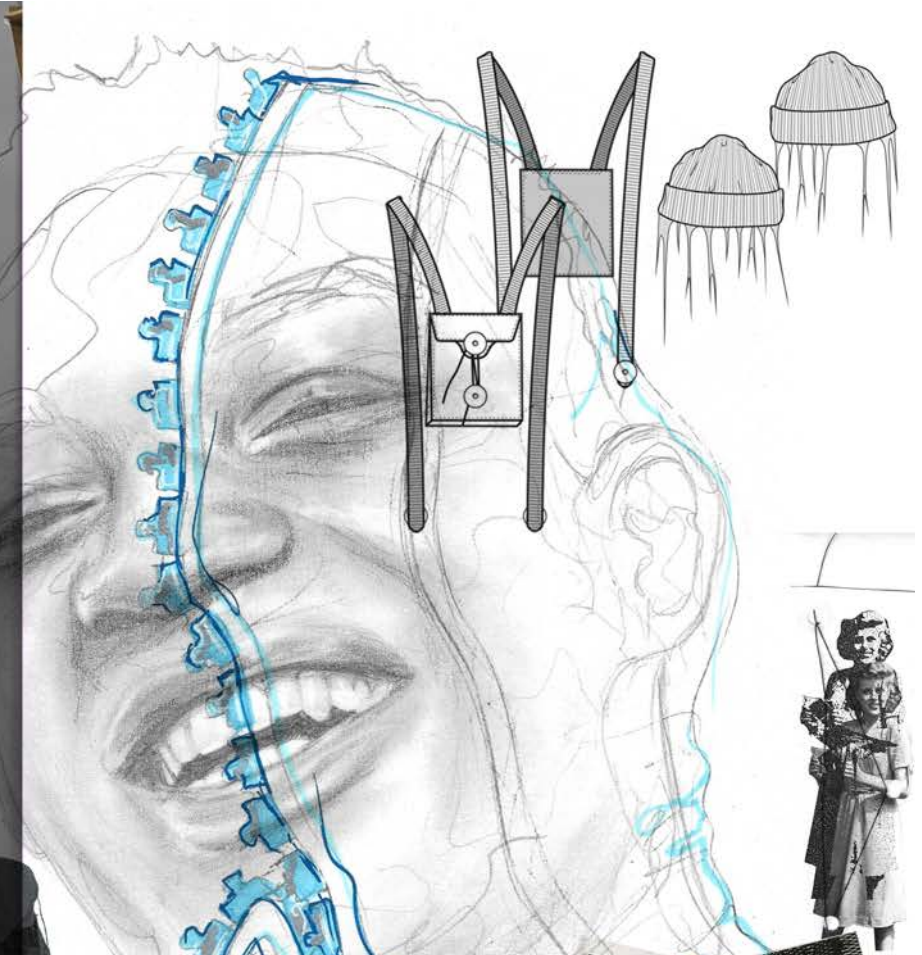


CH.
ES
AMPS



an
th
th
w
:
y of services, b
l, under agree
Union at Be
all other
mental
s serv
ed to
y be
her
(e)
mpc
s de
t
y,
t
t
have adop
amps, are in ever
fo
di

in another very large group,
honouring people, events and anniversaries; occasionally
they continue in ordinary use for a very long time,
and thus no hard-and-fast dividing line is possible. Of
recent years a new category of pictorial Thematic
amps (271, 338) has come into being. Although often
only on sale in their country of issue, their sole reason
is to satisfy (and raise money from) collectors,
who are usually interested in arranging their stamps
by themes rather than countries.
These stamps are temporary issues, often hastily
resulting from a shortage of certain stamps or
from a change in government, and are usually
issued in small quantities (423).



WHY WHY WHY WHY WHY WHY WHY WHY WHY WHY
WHY WHY WHY WHY WHY WHY WHY WHY WHY WHY
??
??
??

FORMING TEXTILE
DESIGNS FROM
GLAMMIES
CREATED

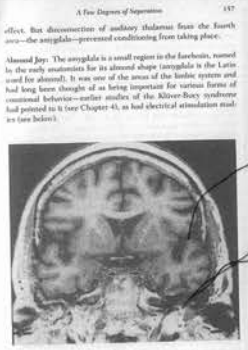
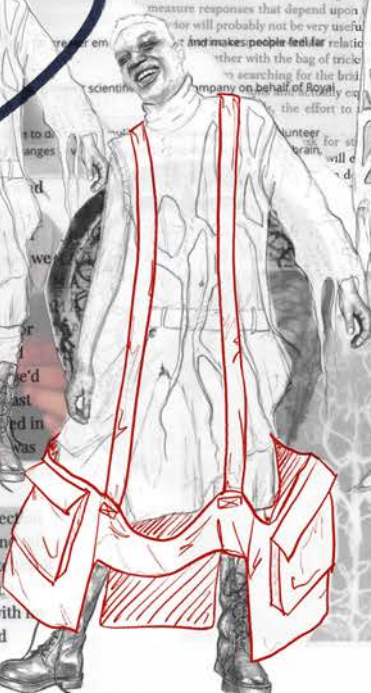


FIGURE 10
Magnetic Resonance Imaging Brain Showing the Location
of the Amygdala in the Human Brain.
The amygdala on each side of the brain is indicated by the artist. (Image pro-
vided by E. A. Phelps of Yale University.)



Games People Play The Psychology of Human Relationships by Eric Berne, M.D.

A Few Degrees of Separation



For me, letter writing has been an important part of my life. It's not just about sending a letter to a friend or forwarding a meme on a social media site. It's about the importance of sending a letter to a friend or family member. I've never received, and made sure to send to friends and family.

That tradition continued in my childhood. My friends and I would write letters to each other every holiday they made. For (yes, even I was a girl then). When my best friend and I were away in third grade, we would write letters monthly. We would date each other on what made us try, what boy we had a crush on, and what we were going on at school (using the four colors of milk and multiple doodles). I dated a guy from Michigan from high school to my senior year of high school, and letter-writing was our primary means of communication, even when we were using IM, and phone.

There's just something more personal and deep about a letter—the amount of reflection and time poured into writing a letter hits differently than a haphazard text or phone message. Instead of being put on the spot or being caught in a bad moment, you have time to think through every word and physically pen it down. Words have more meaning, and the person receiving it can feel that. I can't remember my IM conversations or texts with my best friend, but I've saved every single letter and can open them up, look back, and remember all the deep feelings we shared.

Lots of love

Lots of love

Lots of love

Lots of love

Lots of love

Lots of love

Lots of love

Lots of love

Lots of love

Lots of love

Lots of love

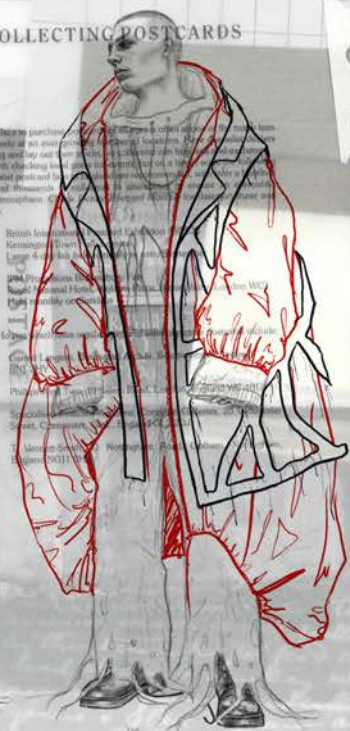
Lots of love

Lots of love

Lots of love

COLLECTING POSTCARDS

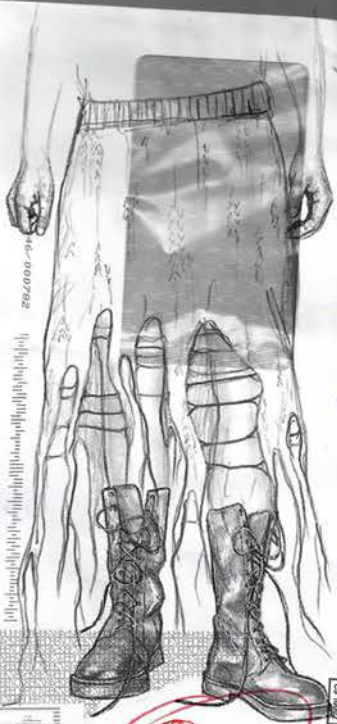
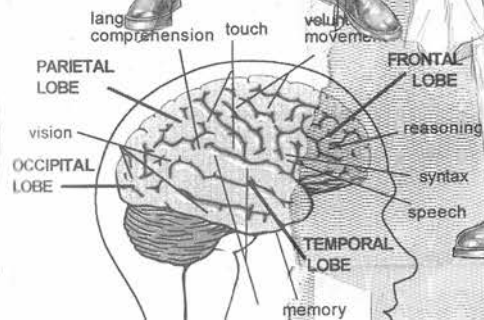
ADVERTISEMENTS AND SOUVENIRS



DISTRESSING
- STILL SHOWING
CONNECTION

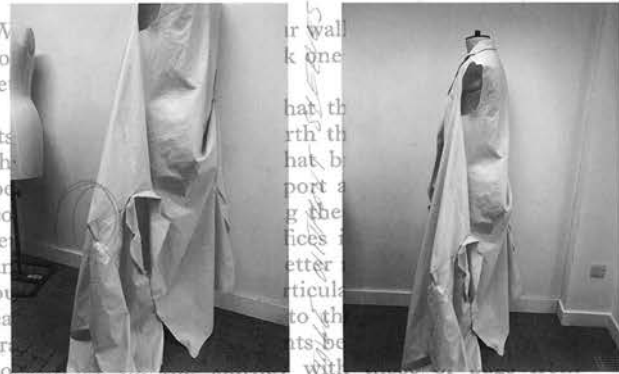
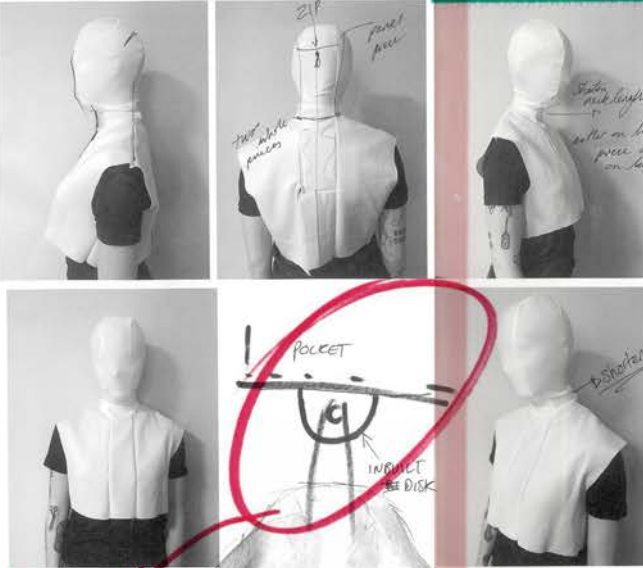
STARTING
HEAD PIECE
DESIGNS

PERAPYUS
APPLICATION



CHAPTER TWO

THE PURPOSES AND USES OF STAMPS



our wall
k one
le
hat, th
rth th
hat b
port a
g the
lices
etter
articu
to th
ats be
some
with
other sorting offices. Eventually, and after being sorted
pe
e times at different depots
s destination town. There
coming letters into carefully
they can be taken to the
o may visit each house or
three times a day, or who
s may use van or mule or
steads once a week or less.
for our stamp is our own
of this or
reality th
ize to des
etail.
ce of our
ffer

an enormous... services, but it is also linked
throughout... der agreements regulated by
the Universal Postal Union at Berne in Switzerland,
with the Post Offices of all other countries.

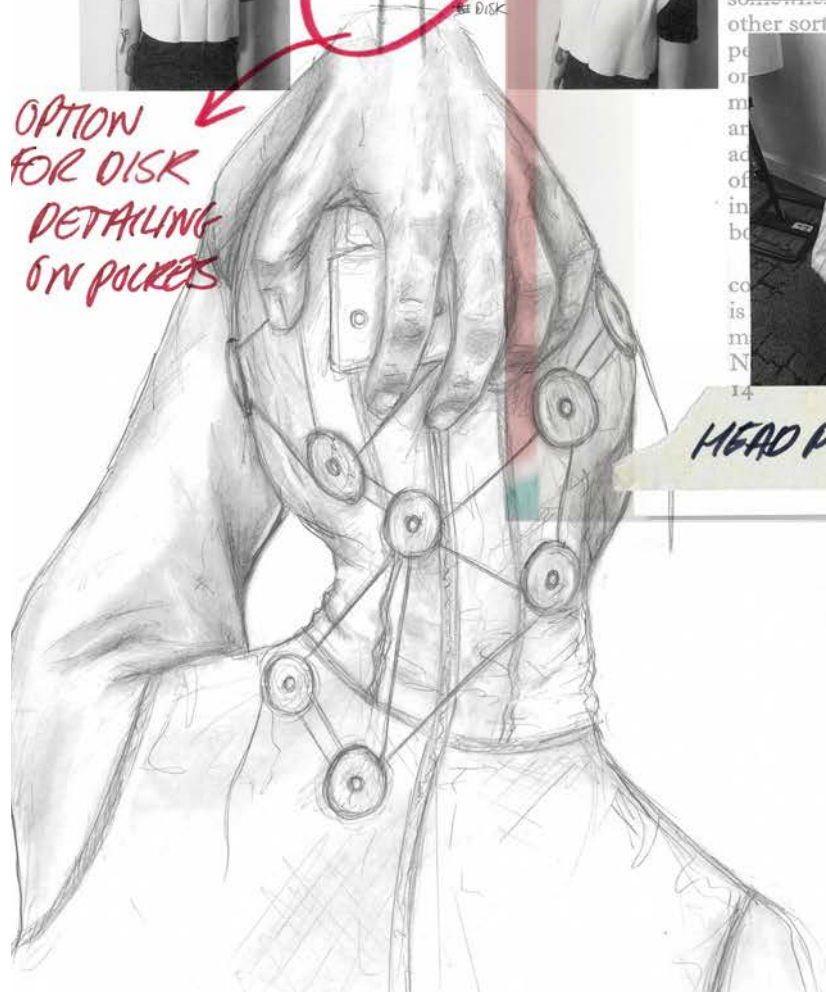
The stamp is a governmental receipt for our money,
and, when it performs its service of indicating correct
payment, it is postmarked to prevent further use.
Before cancellation it may be in effect a negotiable
token for money, and either cancelled or not it may
be of interest (and therefore value) to collectors, but
these are not its purposes. It is important to bear this
in mind when thinking about its design.

First, however, it will be interesting to look at the
various categories of stamps. Some of these, as will
be seen, are so limited in their usefulness that, not
surprisingly, very few countries have adopted them.
Others, such as postage due stamps, are in everyday
use by many postal organisations.

Stamps in common use for an indefinite period are
called permanent issues, as distinct from all those that
have a limited validity. Commemorative stamps form another very large group,
including national events and anniversaries; occasionally
they continue in ordinary use for a very long time,
but this no hard-and-fast dividing line is possible. Of
late years a new category of pictorial Thematic
stamps (271, 330) has come into being. Although often
sold only in their country of issue, their collection
is to satisfy (and raise money from) collectors
who are increasingly interested in stamps as a hobby
rather than as a means of communication.

Provisional stamps are temporary issues, often hastily
prepared and usually resulting from a shortage of cer-
tain denominations (and/or from a change in government
rates (23)).

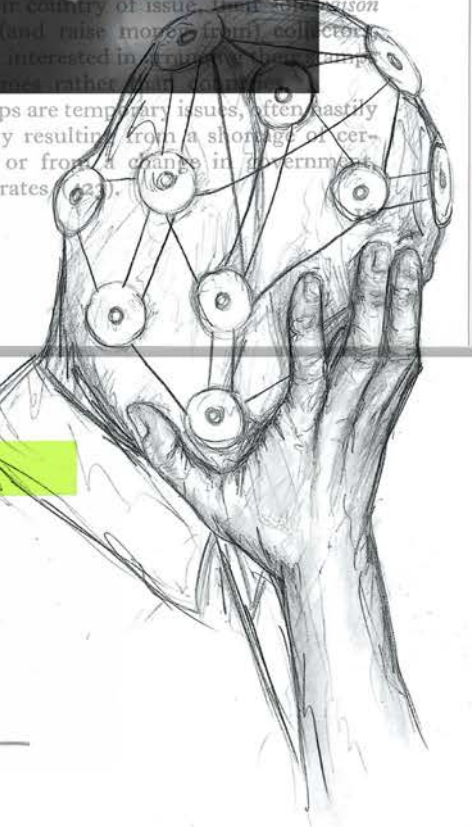
OPTION FOR DISK
DETAILING
ON POCKETS



HEAD PIECE DESIGN

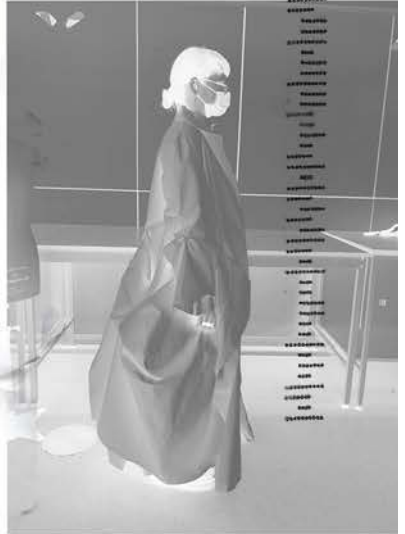
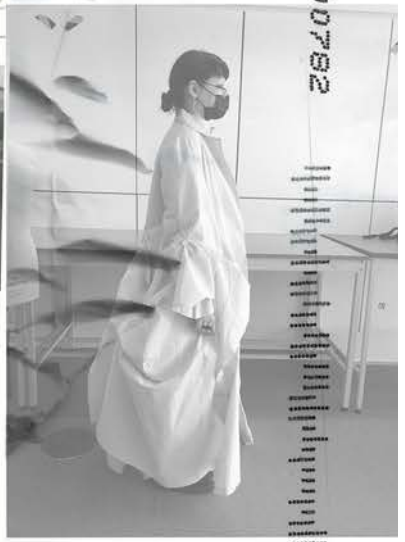
TOILE ADJUSTMENTS

Length can be adjusted
depending on post
strength



INTERACTIVE TOILE FIT PULL OUT

4 346-000792



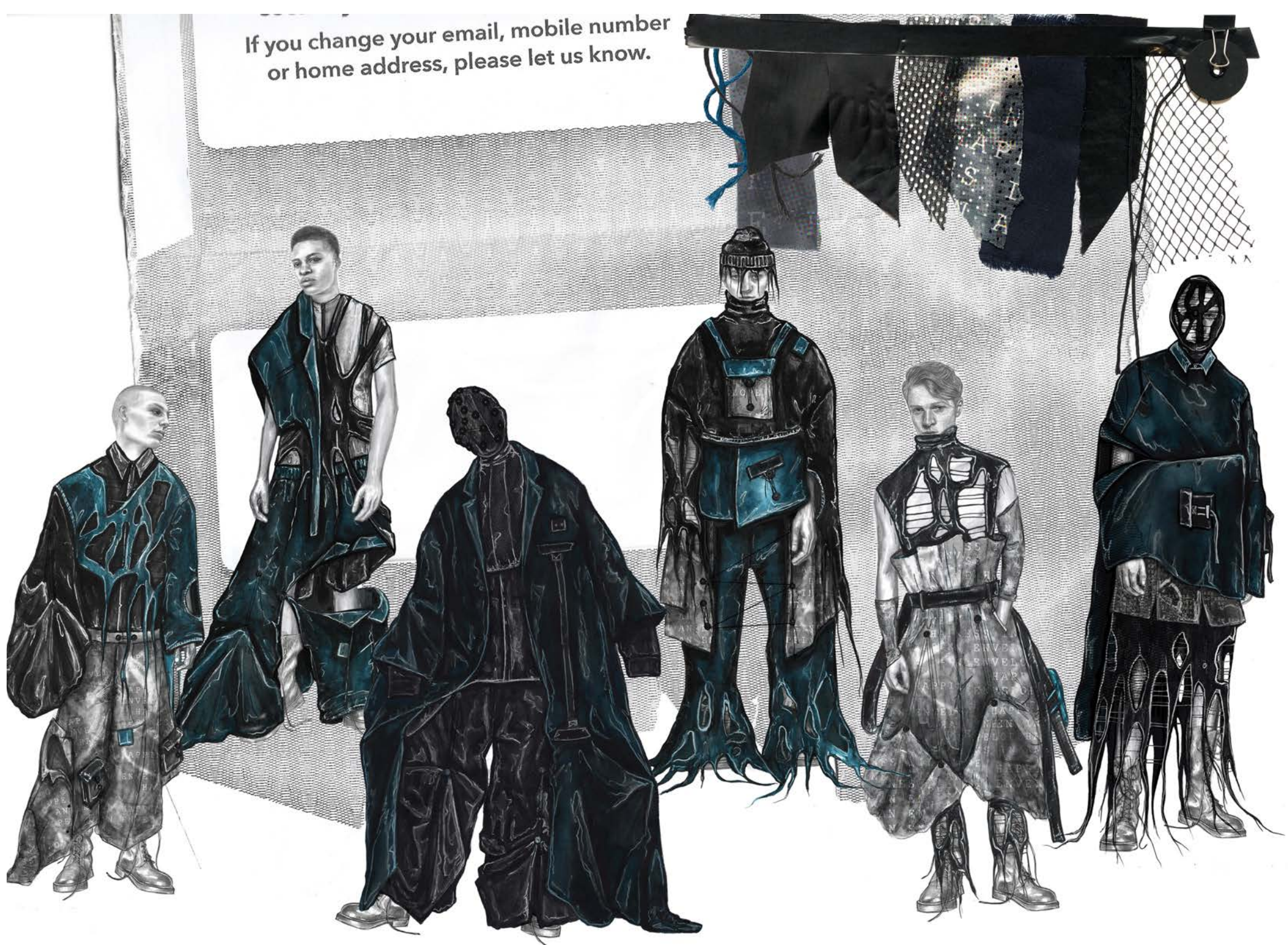
TOILE FIT TOILE FIT TOILE TOILE

DOCUMENTING ANY CHANGES TO BE MADE AT TOILE FIT

Handwritten notes on a piece of lined paper, including the words "Adjustment" and "fitting".



If you change your email, mobile number
or home address, please let us know.





BIRMINGHAM CITY
Birmingham

LOOK 1

LOOK 2



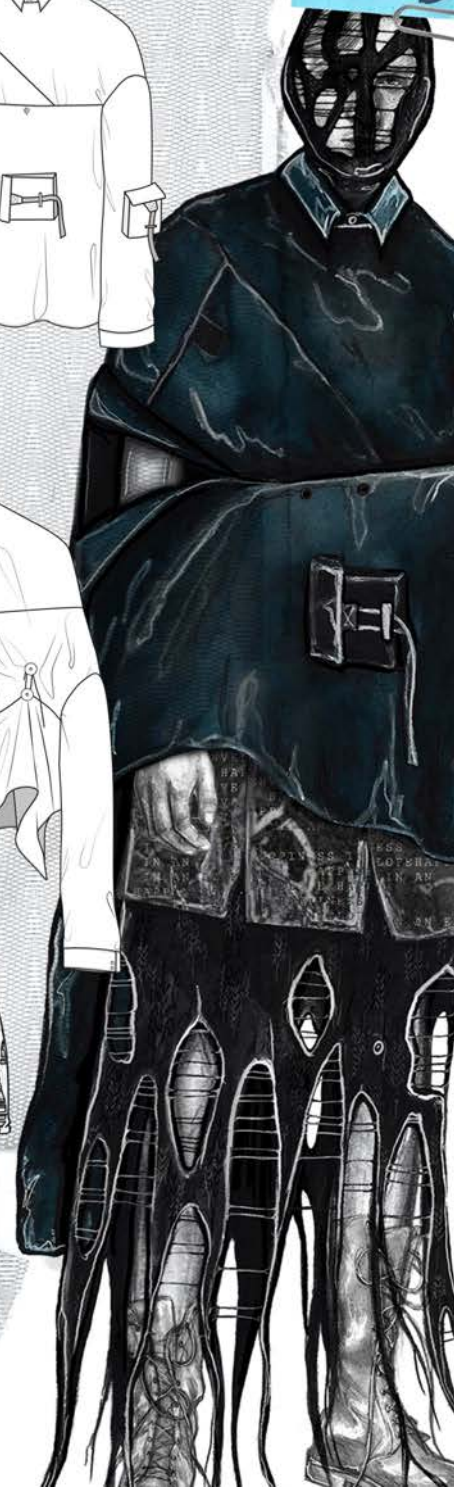
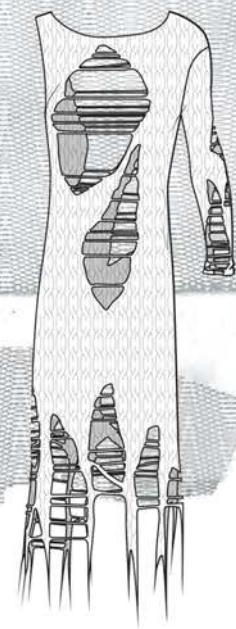
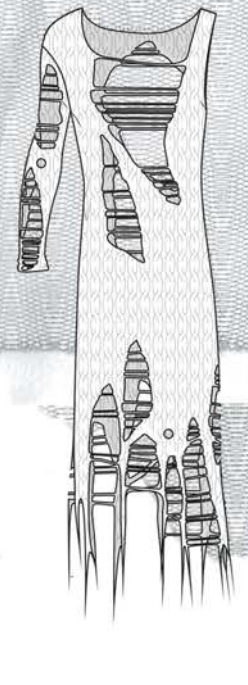
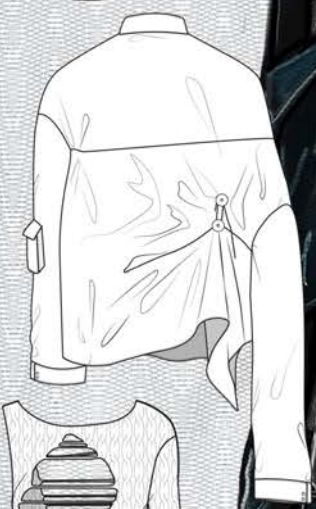
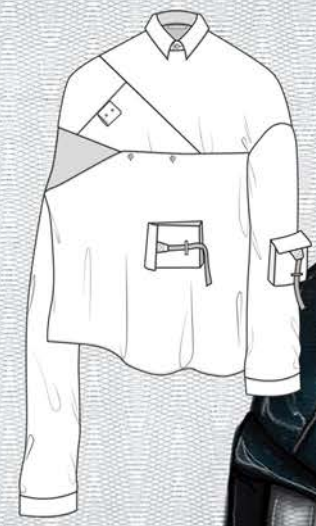
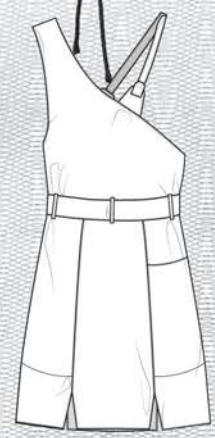
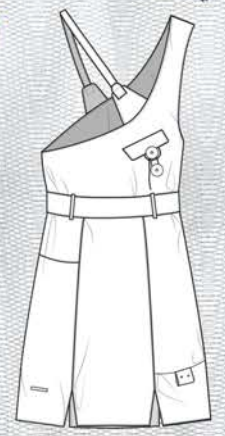
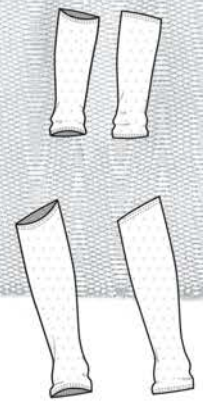
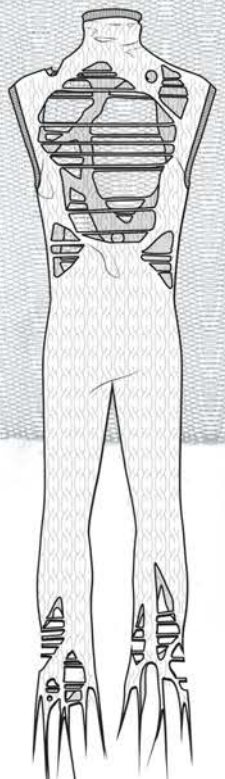
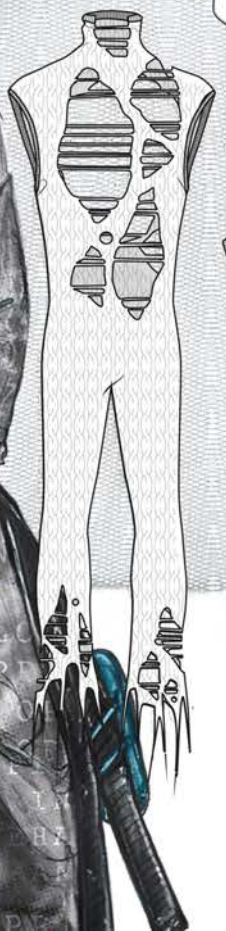
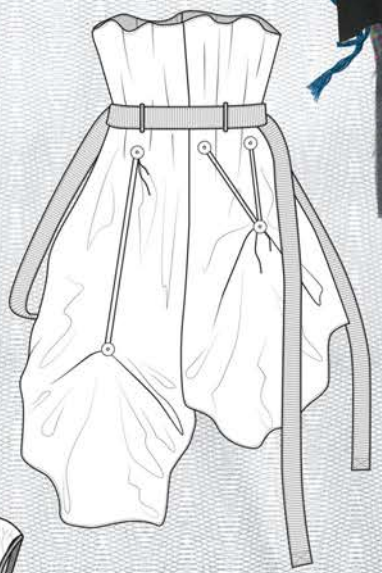
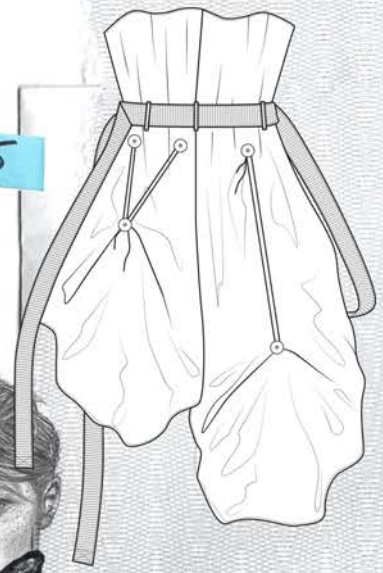
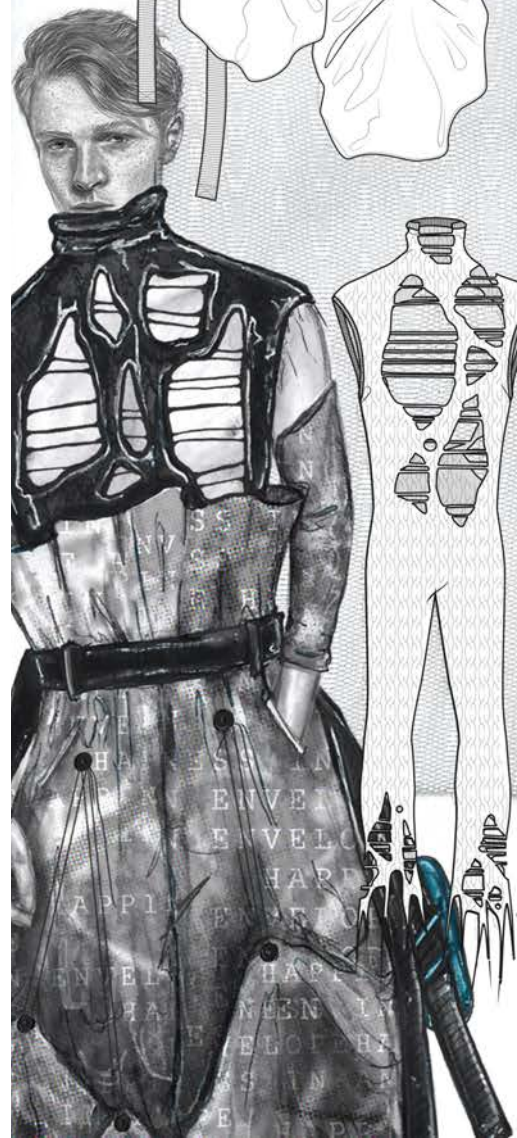
Address:
508

LOOK 3

LOOK 4

LOOK 6

LOOK 5



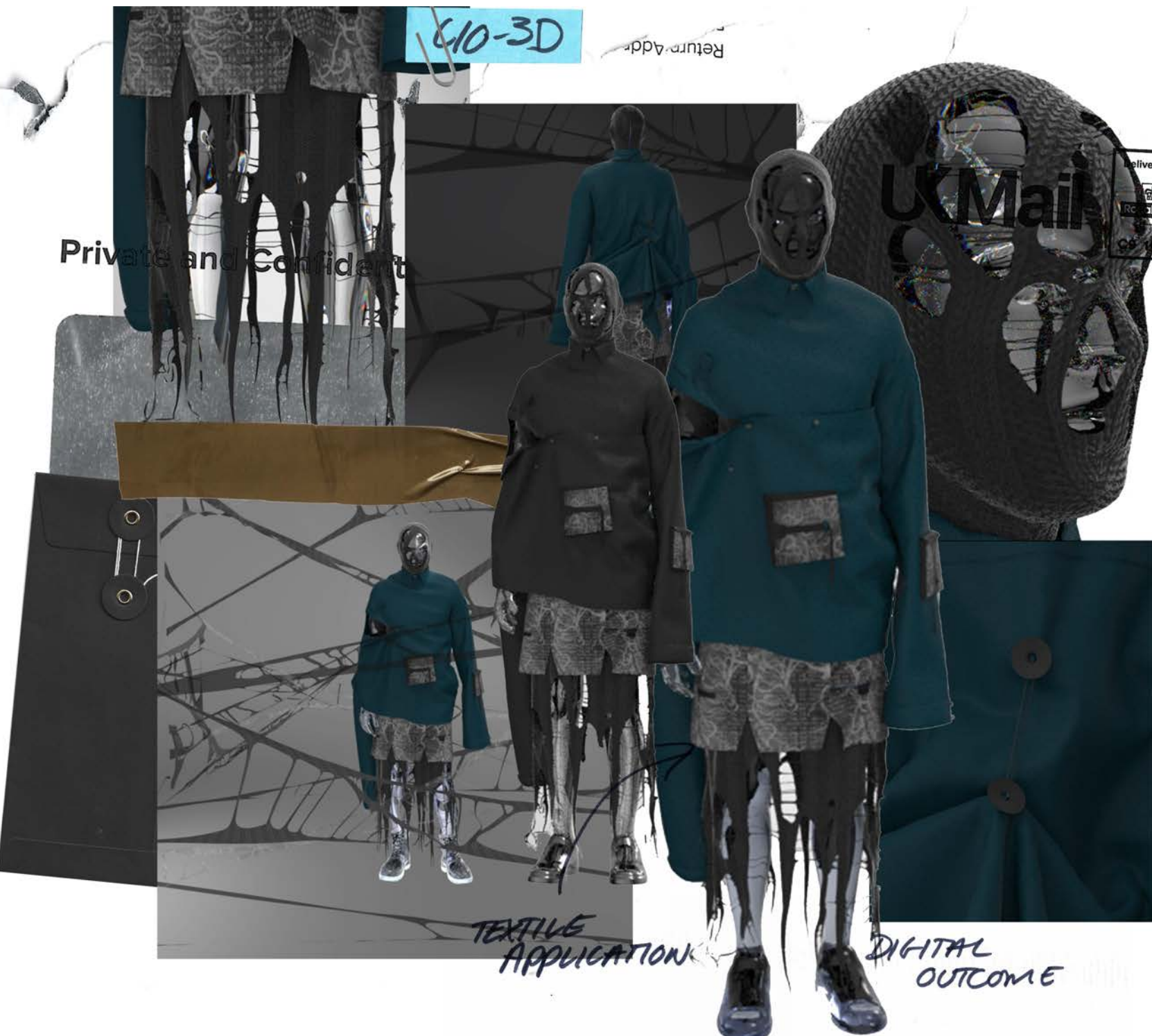
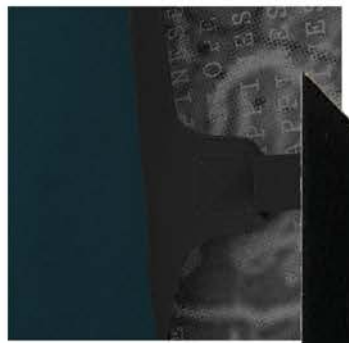
610-3D

Return Address

Private and Confidential

UK Mail

Delivered by
Royal Mail
G5 0019



TEXTILE APPLICATION

DIGITAL OUTCOME

