



Culchie is a sophisticated urban womenswear collection targeted at women age 18- 30. The inspiration for the collection was my grandad's participation and arrest during the 1967 National Farming Association protest in Ireland and culchie culture (Irish slang for people raised in rural Ireland). Taking aspects of workwear pockets and farming clothes from old family images, I created the silhouette for the garments. Using innovating pattern cutting on the digital software CLO, the garments retain the functionality of workwear pockets with abstract shapes. The collections colour palette derives from an aerial photo of the McEvelly land, with olive green, brown, burnt orange and hues of blue being the primary colours in the collection. Utilizing heavy, durable textures such as denim and waxed cotton to retain the practicality of traditional farm wear, juxtaposing with soft knitted elements. The collection uses contrasting fabrics and yarns to replicate the second hand and patchwork element of a culchie upbringing.

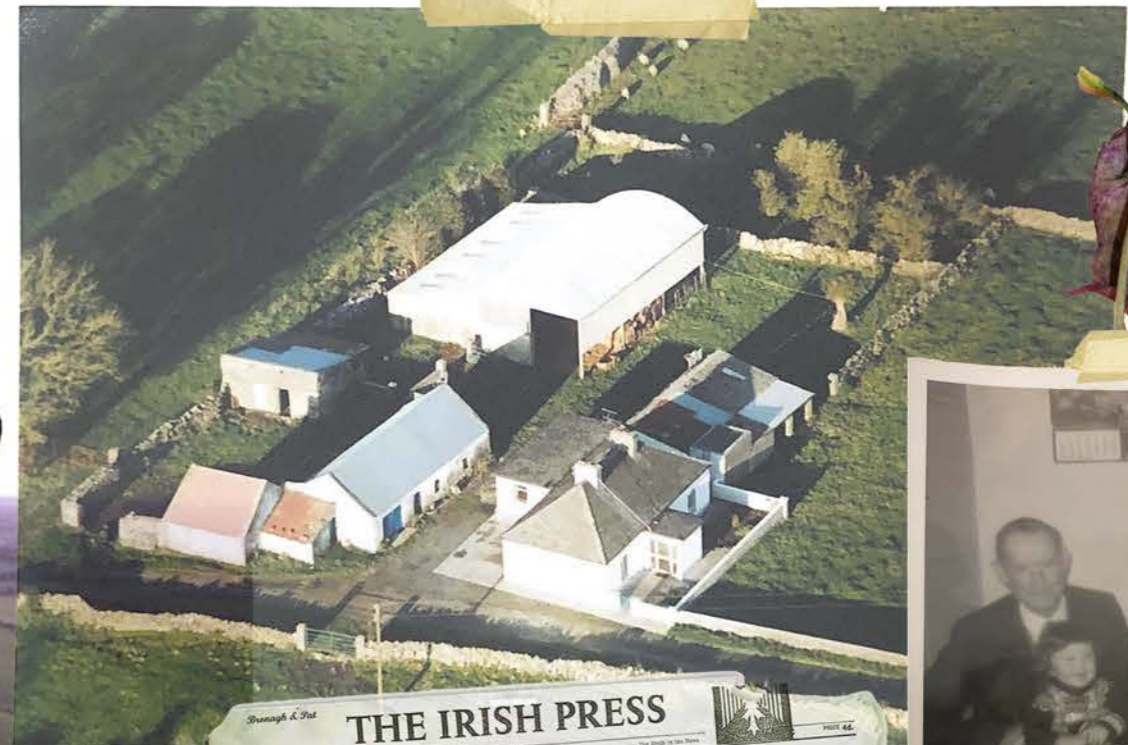


CULCHIE

IF FARMERS
GIVE IN NOW
THEY'LL NEVER
FIGHT AGAIN



BALLYCOLGAN UPPER, HEADFORD
COUNTY GALWAY



JOHNSTOWN, ATHLONE
COUNTY ROSCOMMON



What survives
if we don't?

CROSS COUNTRY MARCH

N.F.A ROAD DEMONSTRATION



Costs wiping
us out

South Roscommon

**FIVE FARMERS SENT
TO GAOL**

UNPAID FINES

GRANDAD WAVING BEING ARRESTED



"Jail is worth it"
Tom Rock of Drum is rear-



**THE BROKEN
HEARTED FARMER**

OLD FAMILY PHOTOS



Mr McEvilly, pictured at home with his wife and daughter



GARMENT INSPIRATION

WORKWEAR POCKETS

GARMENT INSPIRATION



COLOUR EXPLORATION

SEHNSTOWN, ATHLONE, COUNTY ROSCOMMON



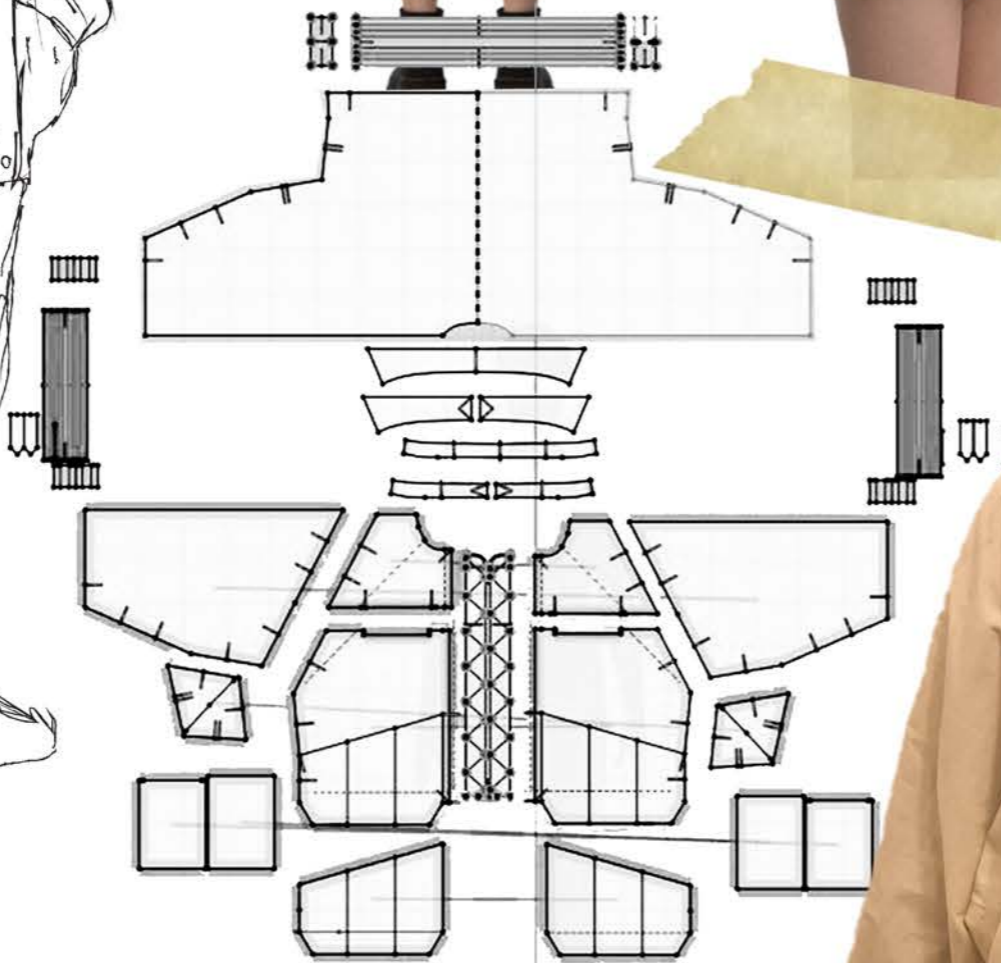
MCEVILLY FARM WHERE GRANDAD
GREW UP & BUILT HIS FAMILY
HOME





RIB SAMPLES AND FINALS
FOR FMP COLLECTION

SACKET DEVELOPMENT FARMERS TAKEN TO MOUNTJOY



1/2 MOON COLLAR STAND

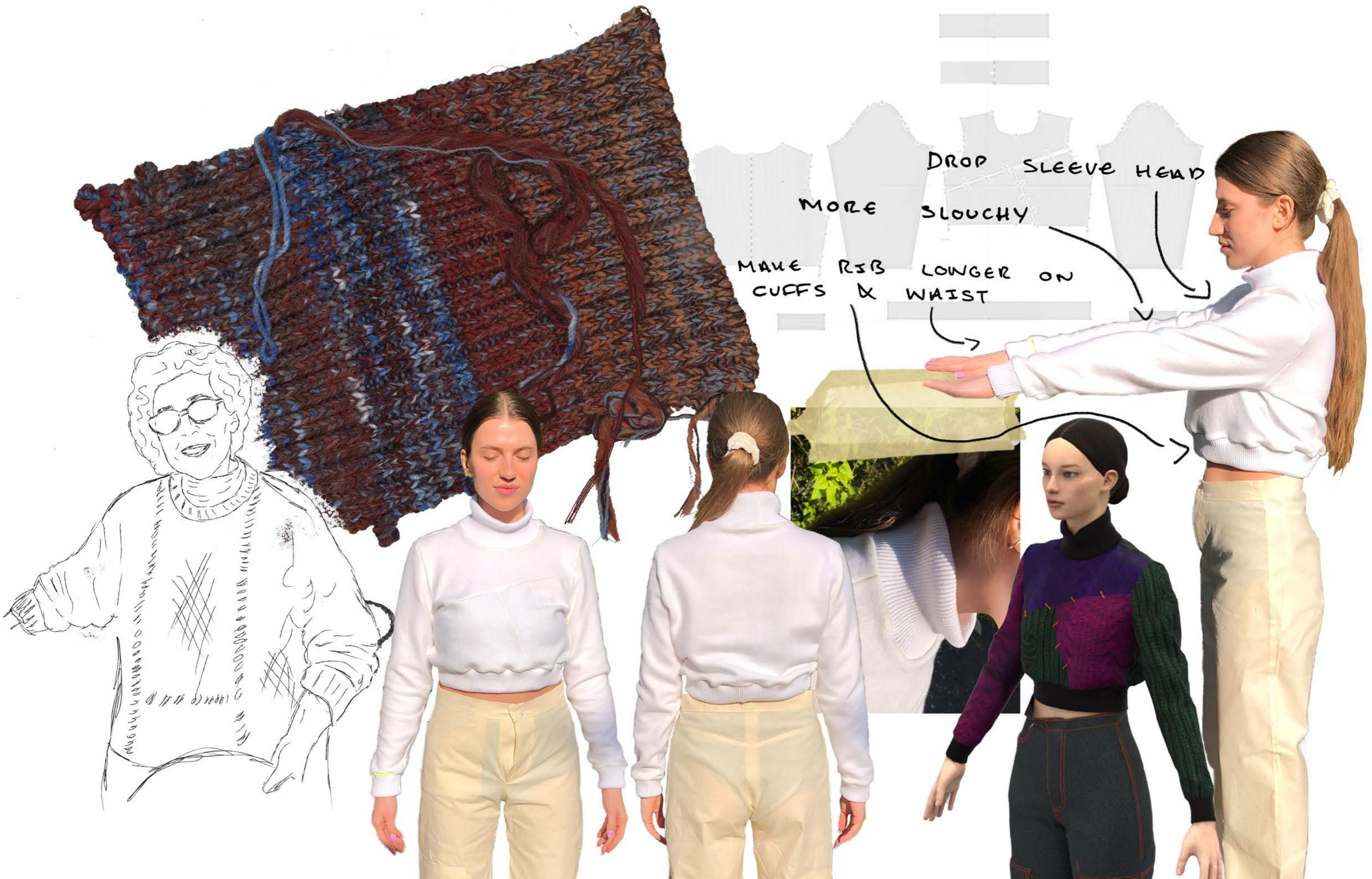


ELASTICATION ON UNDER CUFF

MORE ELASTICATION



TURTLE NECK SWEATER DEVELOPMENT



SEANS DEVELOPMENT

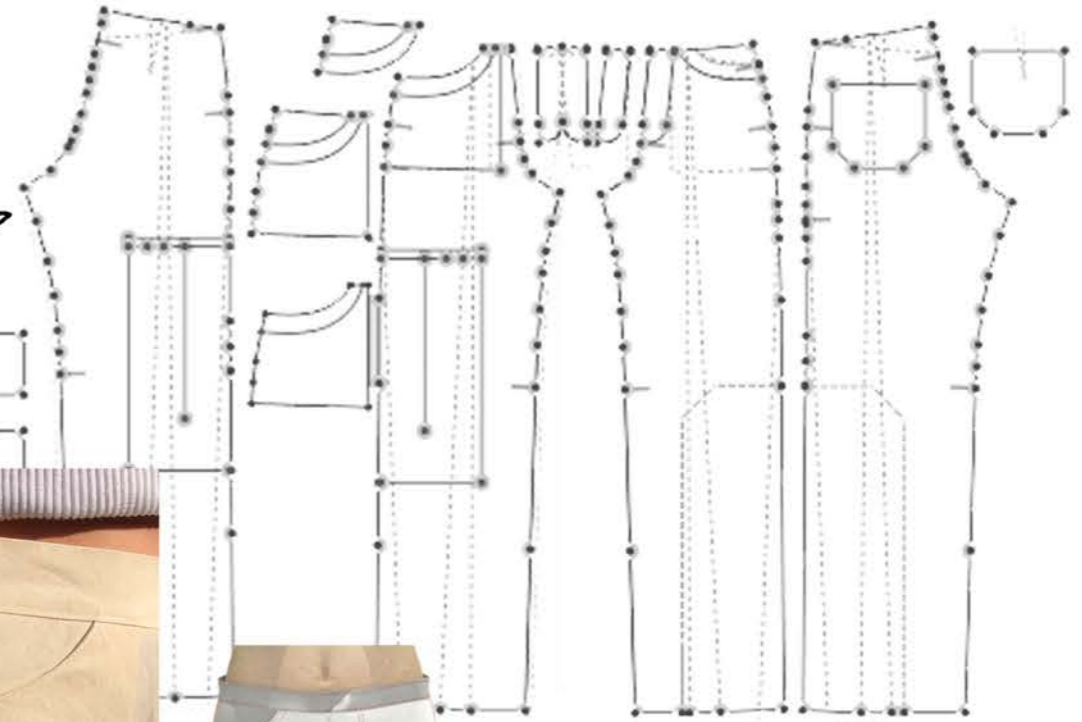
CURVED WAIST BAND

MAKE PATCH POCKET
FREE FALLING

TAKE 3cm OUT CROTCH

POCKET 4cm DEEP
12cm WIDE

MAKE LEG WIDER
(MORE SLOUCHY)

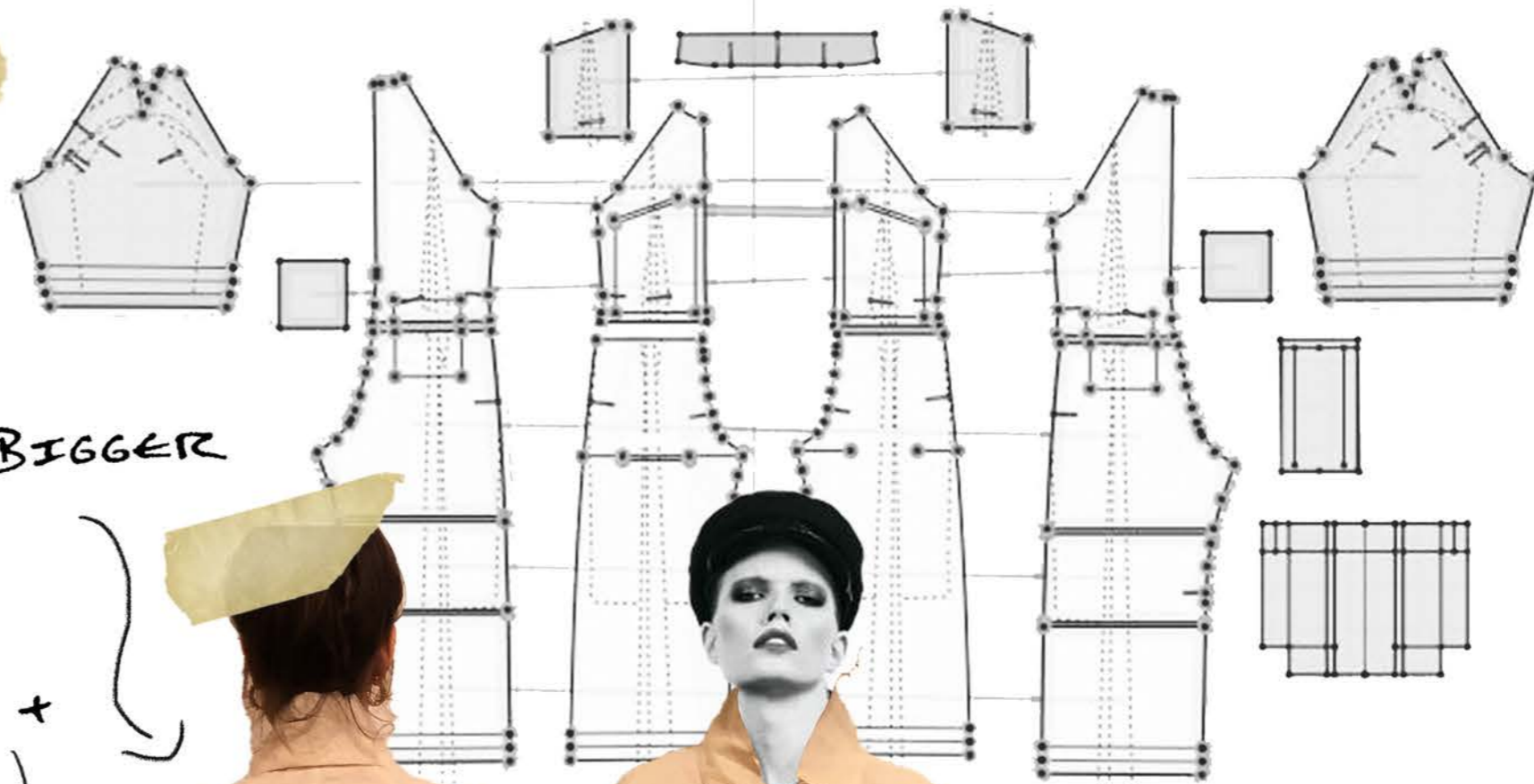


SUMPSUIT DEVELOPMENT



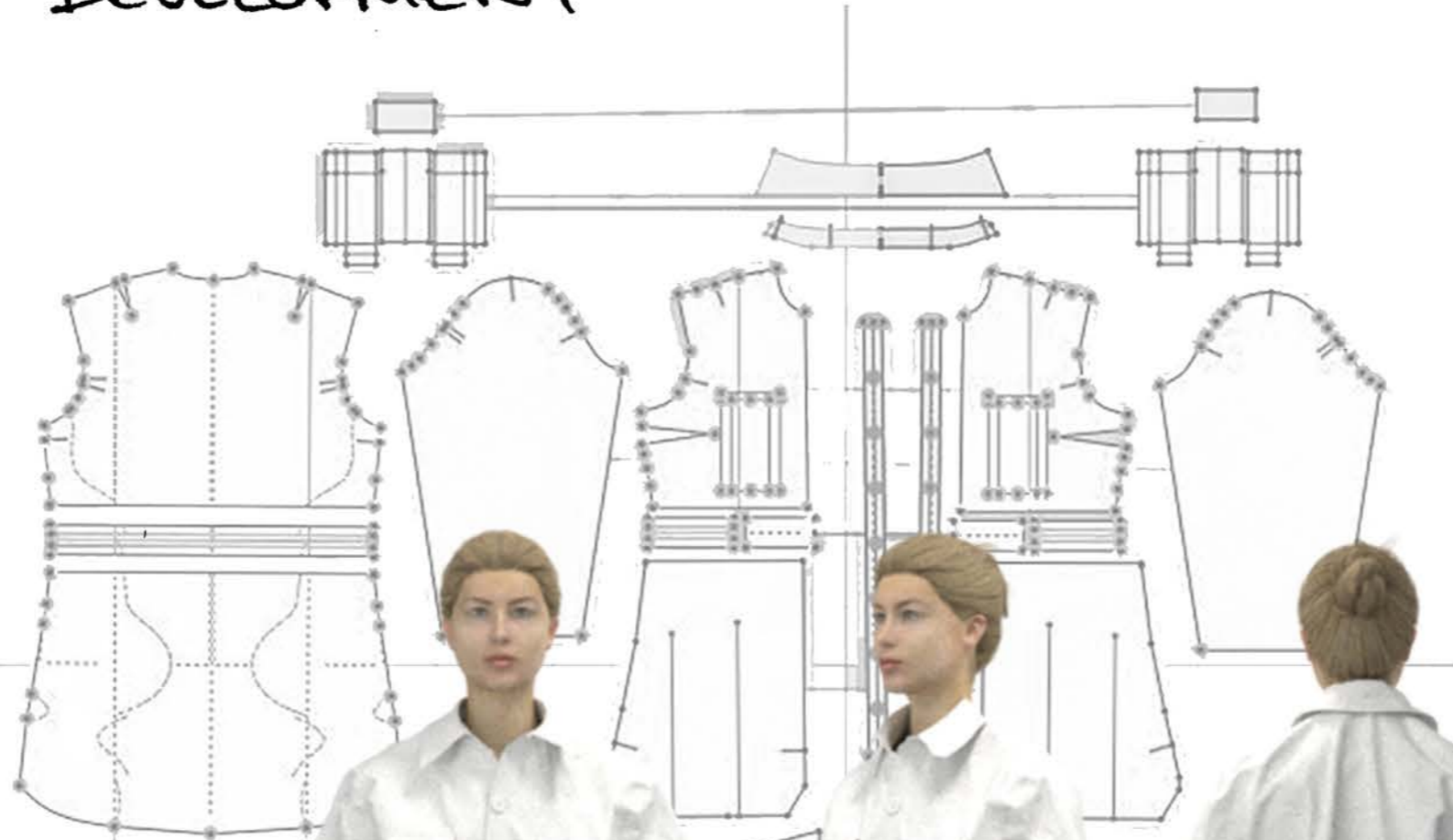
10S - 110% BIGGER

SLOUCHY / BAGGY +

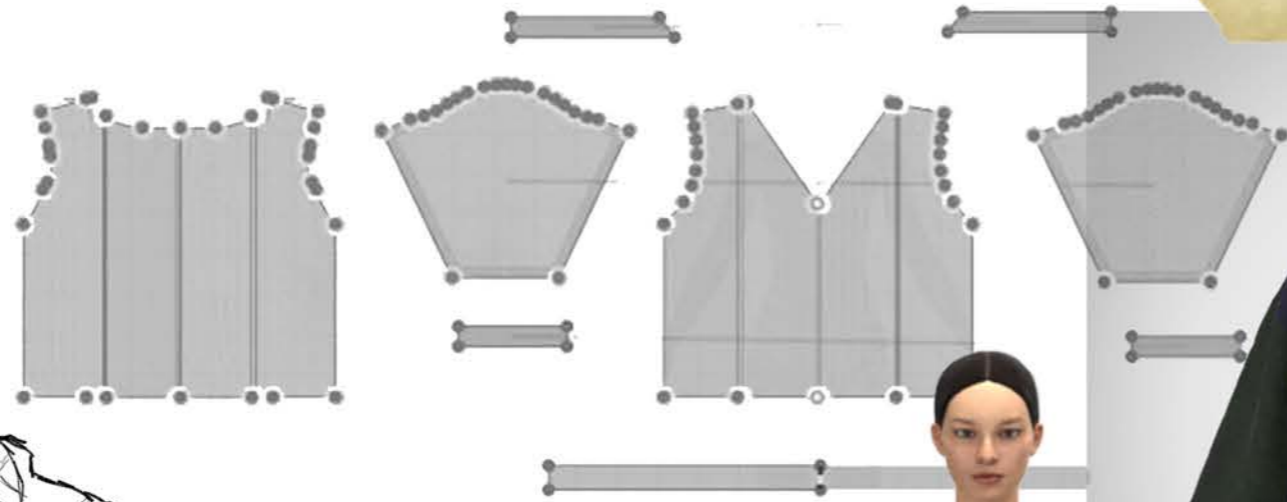


SLEEVES SHORTEN

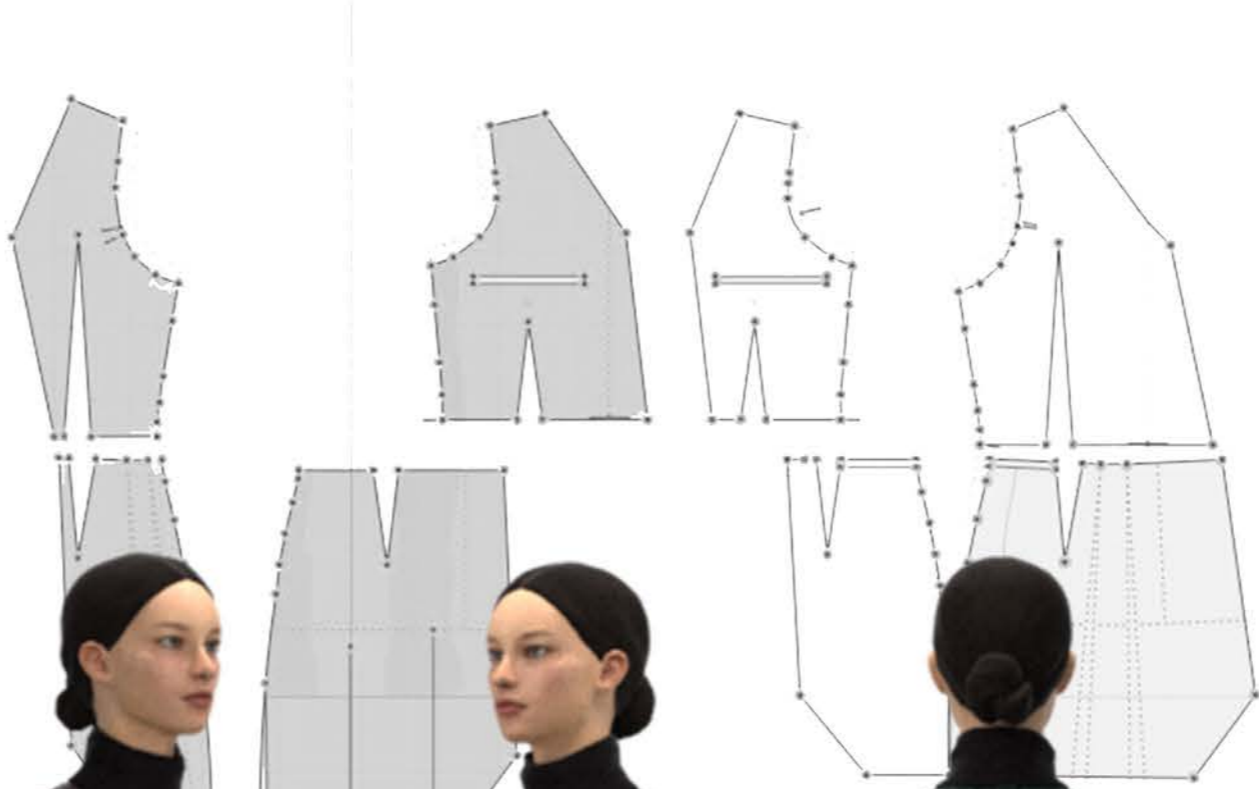
SHIRT DRESS DEVELOPMENT



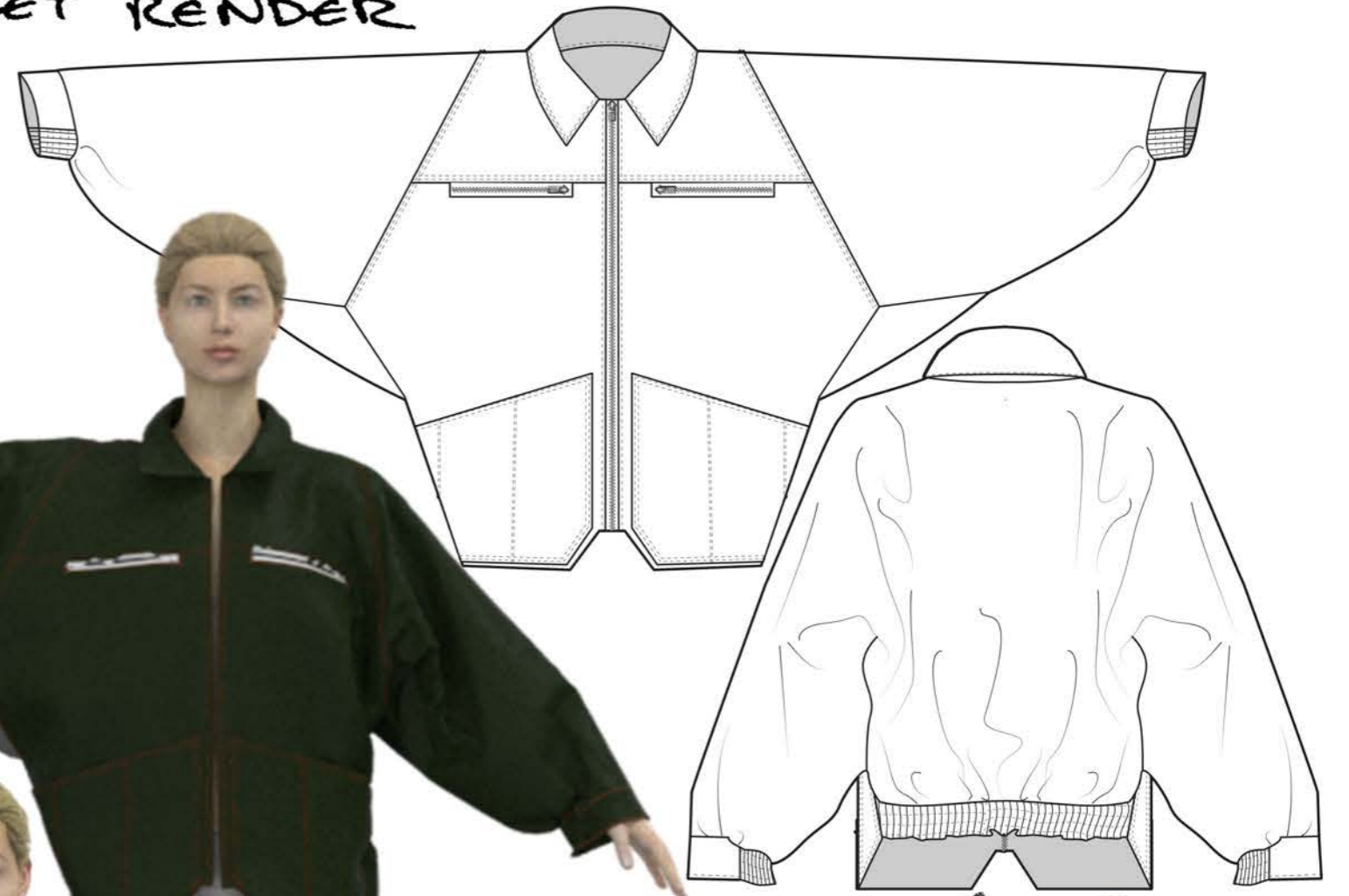
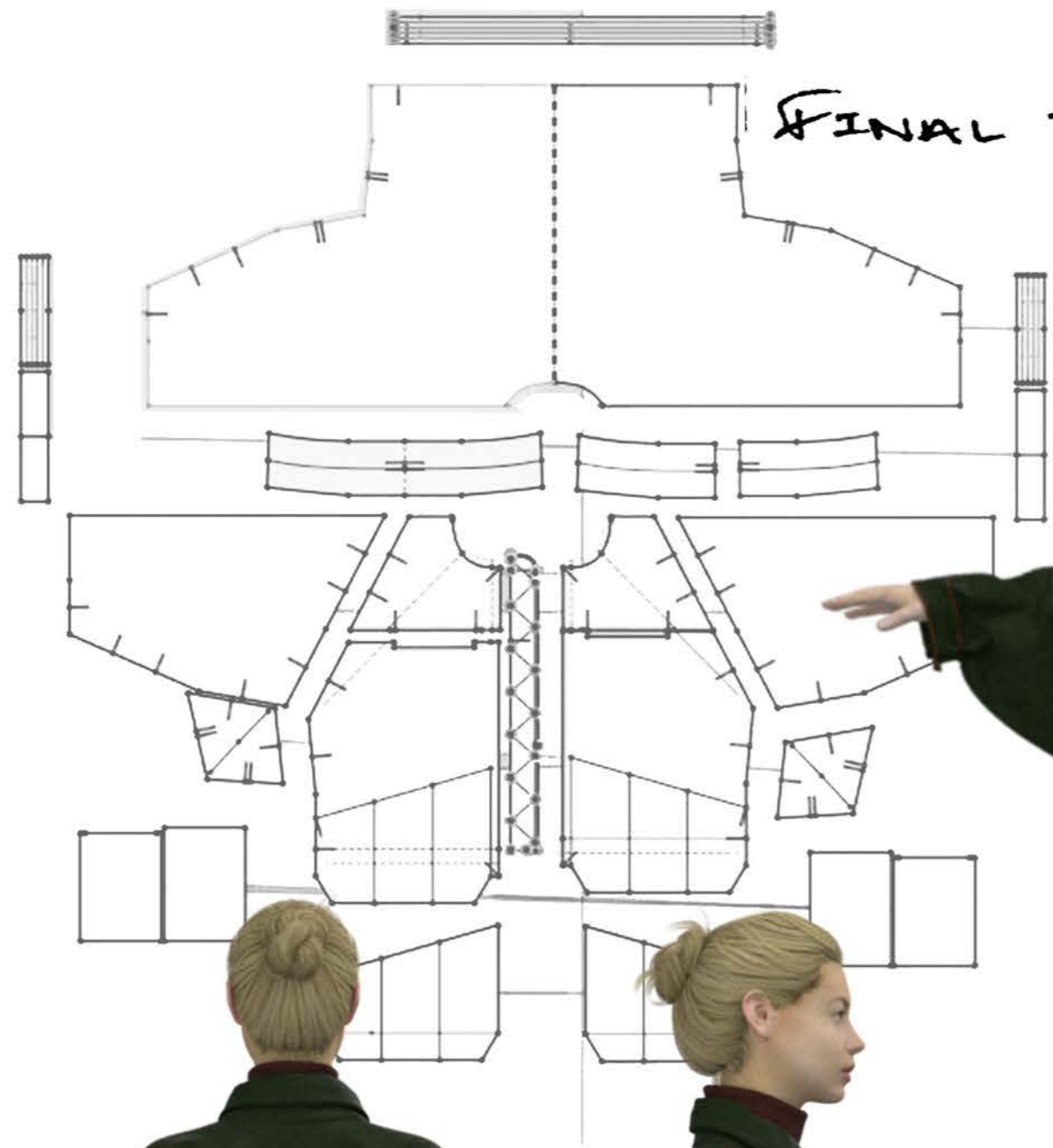
SUMPER DRESS DEVELOPMENT



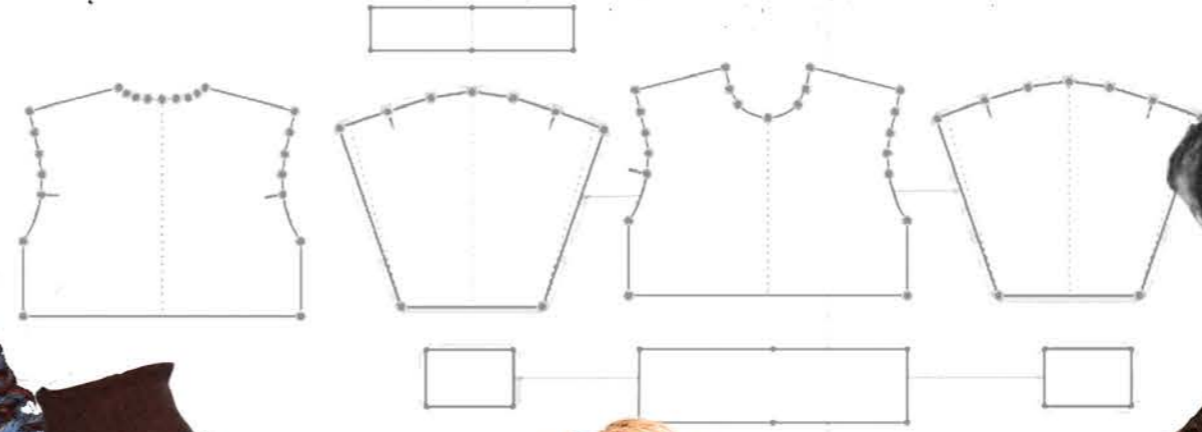
Dress Development



FINAL JACKET RENDER



FINAL SUMPER OUTCOME

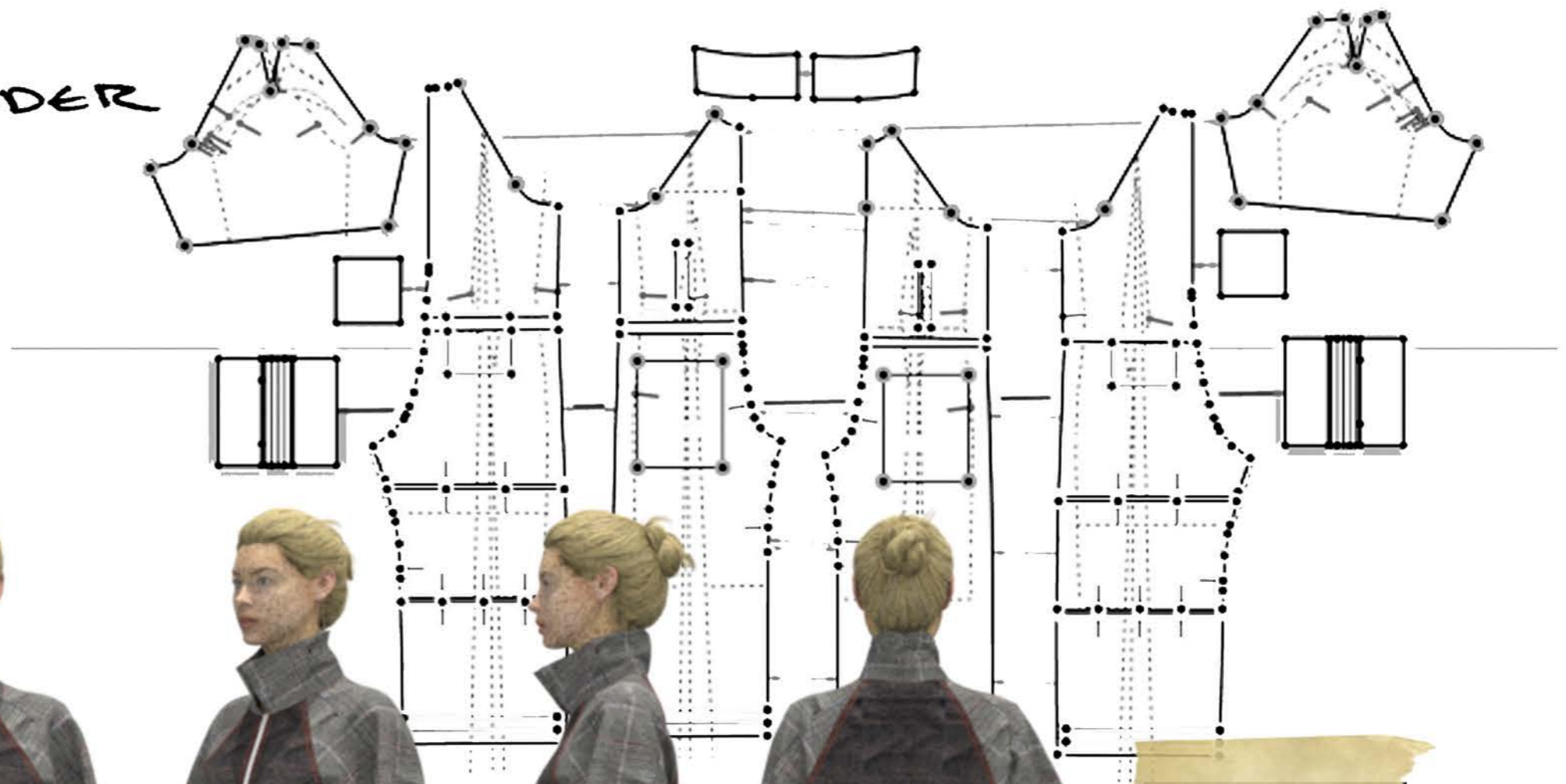
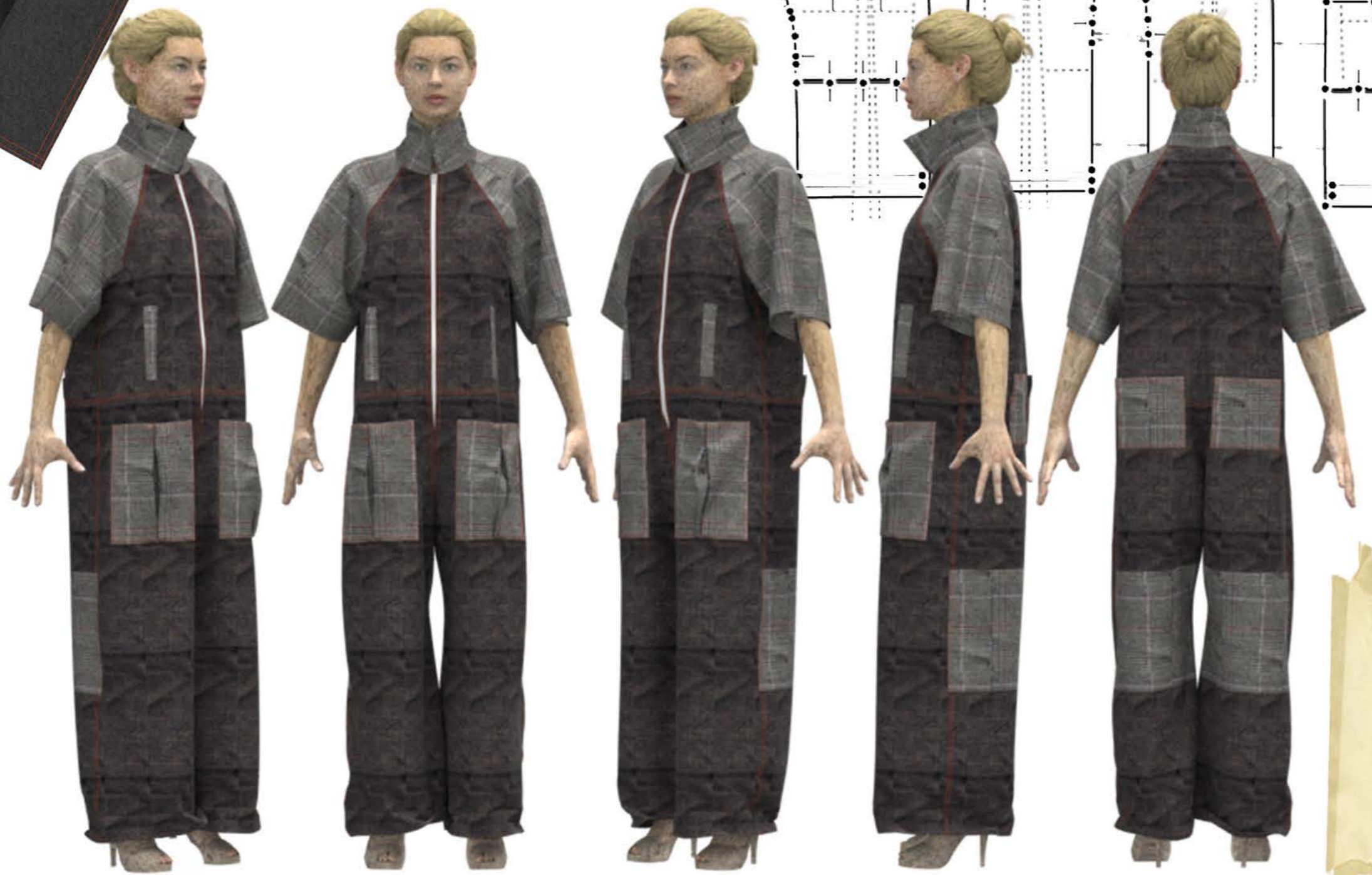


PERSONALLY CRAFTED RIB
MADE FROM BLUE, ORANGE
& BROWN YARNS TO MATCH
WOVEN FABRIC

FINAL SEANS



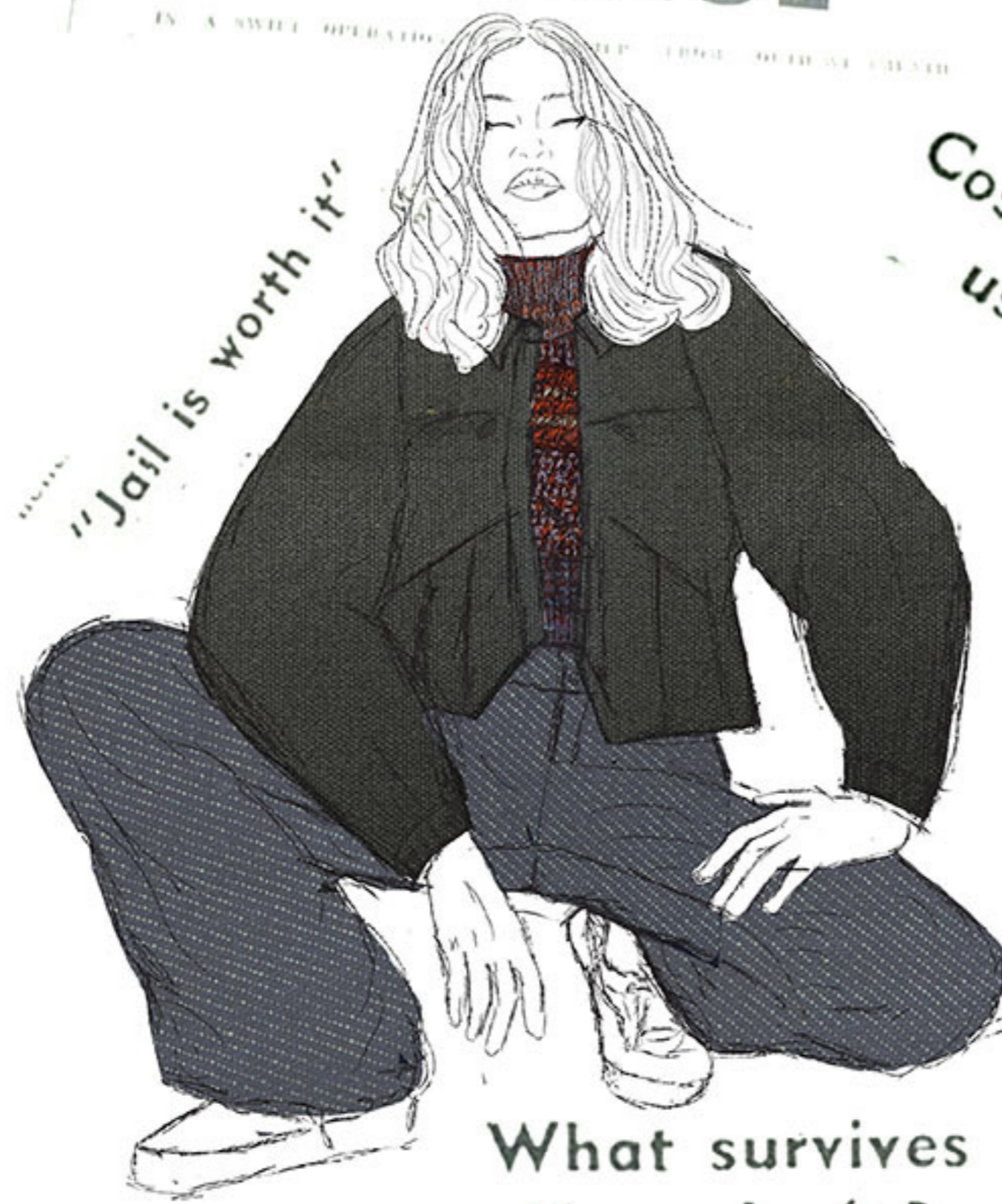
FINAL SUMPSUIT RENDER



South Roscommon
FIVE FARMERS SENT TO GAOL

IN A SWIFT OPERATION...
...THEY WERE TAKEN TO THE GAOL...

"Jail is worth it"



What survives
if we don't?

Costs wiping
us out



FARMERS TAKEN TO MOUNTJOY



VULCHIE