



**DIAGNOSIS**

Friday 29<sup>th</sup> May  
D. Day! Couldn't sleep last night, dropped off at school headed for Oxford, Daisy complained of pains in her legs (just because where about it?)  
Daisy had... and blood pressure + with all the...  
Called...  
No... lady does... about 'day...  
Dr N... he too exa...  
push her...  
with no probl...  
erry has very...  
blood test results show raised mus...  
there is some we...  
muscles. Nick Wilkinson, gave...  
(maybe too much too quickly!)  
affect lungs, heart + brain!  
very mild disease at the moment!  
Taken off...

**DIAGNOSIS**

There is some we...  
muscles. Nick Wilkinson, gave...  
(maybe too much too quickly!)  
affect lungs, heart + brain!  
very mild disease at the moment!  
Taken off...

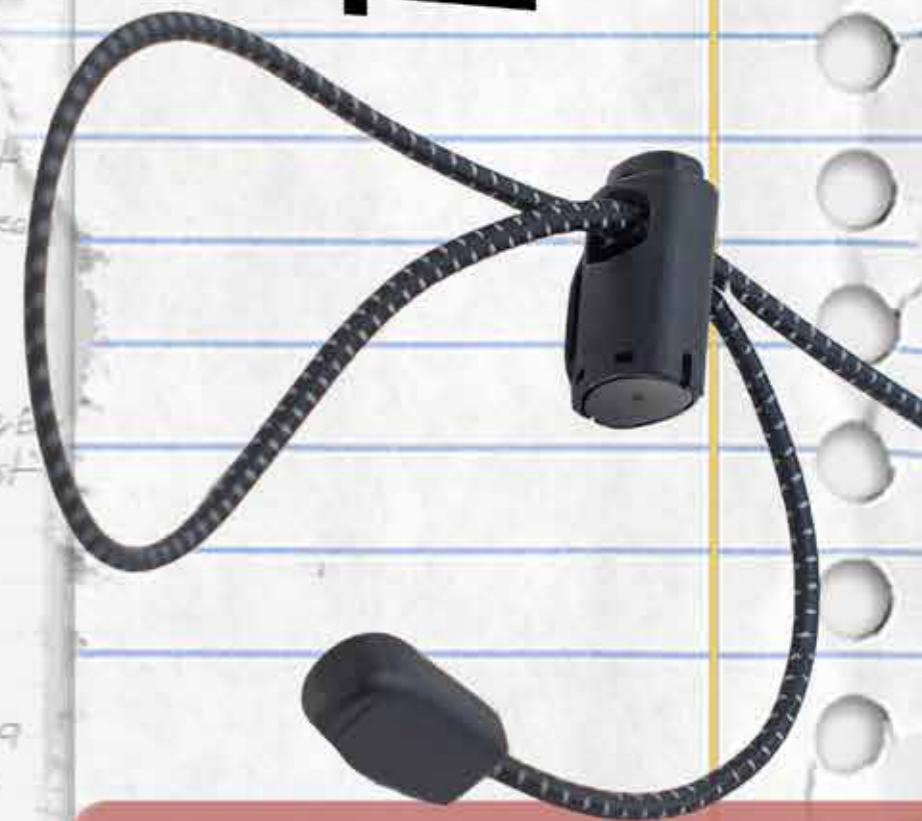


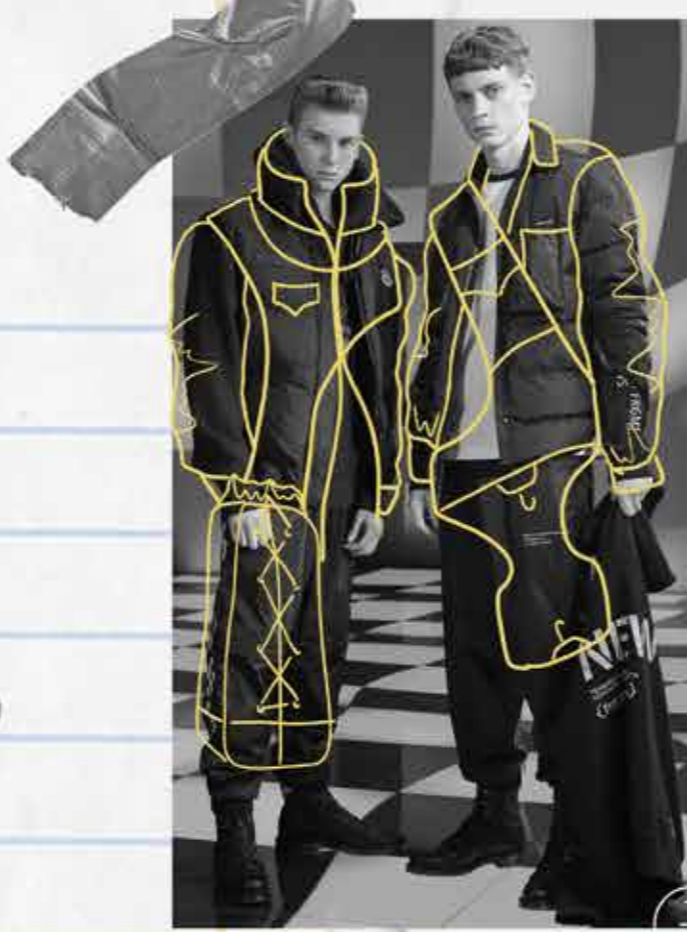
Sat 14<sup>th</sup> May.  
Daisy Slept until 10am then medication from hospital.  
Spat out first dose we thought this is going to be hard. A little brighter this week.  
Nick phoned on Sunday to see...  
Mon 16<sup>th</sup> May.  
Daisy due to start I.V. pre...  
Phone call at 2.30 from ward 7 at 3.30, more needles! Co... hand. Daisy very unhappy with 1st dose on ward 7.  
Tue 17<sup>th</sup> May  
2nd dose. Ward 11. Nurses are lovely made Daisy feel very comfortable. Very...  
Wed 18<sup>th</sup> May  
3rd dose. Ward 11.  
Daisy showing very good signs of picking up. brighter in herself, swelling down weight almost back to normal. See in 2 weeks.  
Friday 20<sup>th</sup> - U.K. to see Nick pleased with progress.  
Tue 24<sup>th</sup> May.  
Had a good week. went back to school for a couple of hours per day this week, not particularly happy to go but seemed to enjoy it when she got there.  
Thurs 26<sup>th</sup> - Started folic acid  
Friday 27<sup>th</sup> - Starting to get tired again.  
Sunday 29<sup>th</sup> Started Methotrexate.

Tues 31<sup>st</sup> May. Phoned Nick today, Daisy had a bad weekend, Swollen again, in a lot of pain. Seem to be back to...

# TRAPPED IN BAGGAGE

COLLECTION: DIAGNOSIS





**DIAGNOSIS IS A NICHE MENSWEAR COLLECTION INSPIRED BY THE IDEA OF BEING "TRAPPED IN BAGGAGE", THIS IS TAKEN FROM MY EXPERIENCE OF BEING A CHILD WITH A RARE AUTOIMMUNE DISEASE. WITH LUXURY STREET AND SPORTSWEAR AT THE FOREFRONT OF ALL INNOVATIVE DESIGNS, DIAGNOSIS IS A COLLECTION MADE UP OFF MOSTLY OUTERWEAR AND ACCESSORIES. MILITARY UNIFORM AND EQUIPMENT HAVE INFORMED MANY DESIGN DETAILS AND SILHOUETTE. COLLABORATION WITH A GRAFFITI ARTIST HAS PRODUCED A STRONG PRINT USED THROUGHOUT THE COLLECTION AND THE NARATIVE BEHIND ILLEGAL STREET ART AND ARTISTS INFLUENCED THE PATTERN CUTTING PROCESS TO GIVE ALL GARMENTS FULL FUNCTIONALITY. SPORTWEAR FABRICS SUCH AS NYLON HAVE BEEN USED THOUGHOUT TO KEEP WITH THE CLASSIC LUXURY SPORTSWEAR AESTHETIC OF THE COLLECTION.**







## ***CUSTOMER PROFILE***



**White Mountaineering**



1946

MTA  
New York City  
Subway

THE HUNDRED

Supr

GUANGXIA

GO WITH FUN



**CONCEPT  
DEVELOPMENT**



**PRINT DEVELOPMENT**



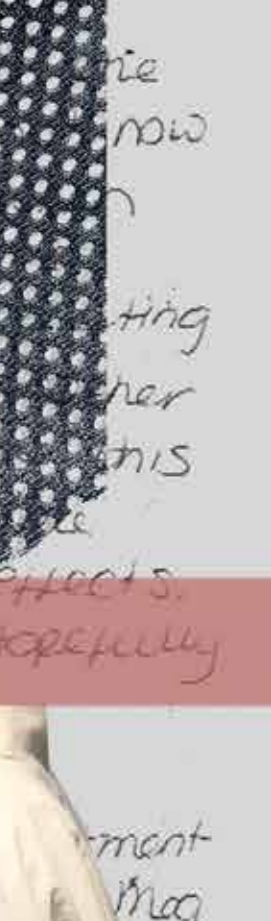
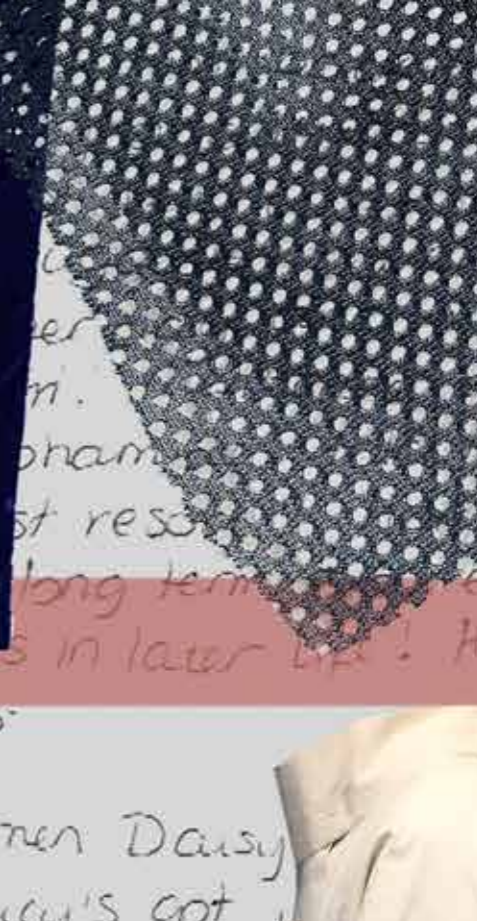
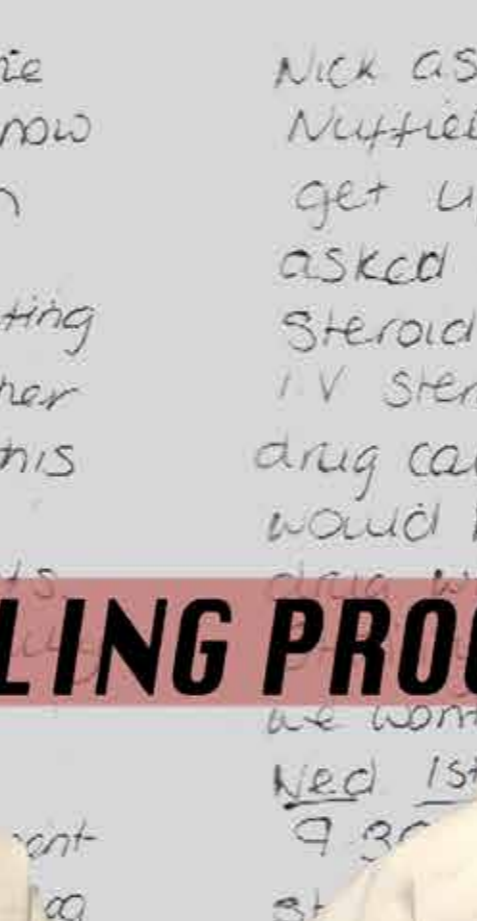




DESIGN DEVELOPMENT

Nick asks us to go and see him, back to the Nuffield. Examined again, cannot now get up off the floor very upset when asked to do so. Nick tested doubling steroid dose to 30mg/day and repeating I.V steroids. Wednesday mentioned another drug called 'Cyclosporin' told me this would be used!! Horrible drug with Sterility + Side effects. Hopefully we won't need 1st treatment and Mag has 9 30 countm! I ask- Nicky the disease is potentially up the risks of compared to the risks from the Their 2nd June we all travel to 30am. Went on ward 4C. And through all the paperwork makes us comfortable. Nick and Pauline explaining what is going to happen, will be on a very low dose 'Cyclosporin' she shouldn't suffer any or long term side effects but they have let us know about them! I brought a case study with me of a little boy





asks us to go and see him, Nick asked Daisy again cannot now get up of asked to Steroid dose IV Steroids. drug called would be used data with near long term effects. in later life! Hopefully we won't use this-

started around 10:30, Nick phoned while do Has spoken to his and wants to Ste if we can just se Nick tells me th disease under potentially life up the risks risks from th Their 2nd u we all trav ward HC. the paperwork Nick and Pauline. what is going to happ very low dose Cycloph suffer any short or but they have to let us brought a case study with

to my

ment

ag

z

the

the

see

Daisy

more

term

now about

on me of a lo

we won't use this-

Ned 1st

9:30

st

Darren Daisy

ment

ing

tn

the

we

cor

see

Daisy

more

term

now about

on me of a lo

we won't use this-

Ned 1st

9:30

st

Darren Daisy

ment

ing

tn

the

we

cor

see

Daisy

more

term

now about

on me of a lo

we won't use this-

Ned 1st

9:30

st

Darren Daisy

ment

ing

tn

the

we

cor

see

Daisy

more

term

now about

on me of a lo

we won't use this-

Ned 1st

9:30

st

Darren Daisy

ment

ing

tn

the

we

cor

see

Daisy

more

term

now about

on me of a lo

we won't use this-

Ned 1st

9:30

st

Darren Daisy

ment

ing

tn

the

we

cor

see

Daisy

more

term

now about

on me of a lo

# TOILING PROCESS

**- HOODIE STYLE  
DEVELOPMENT**

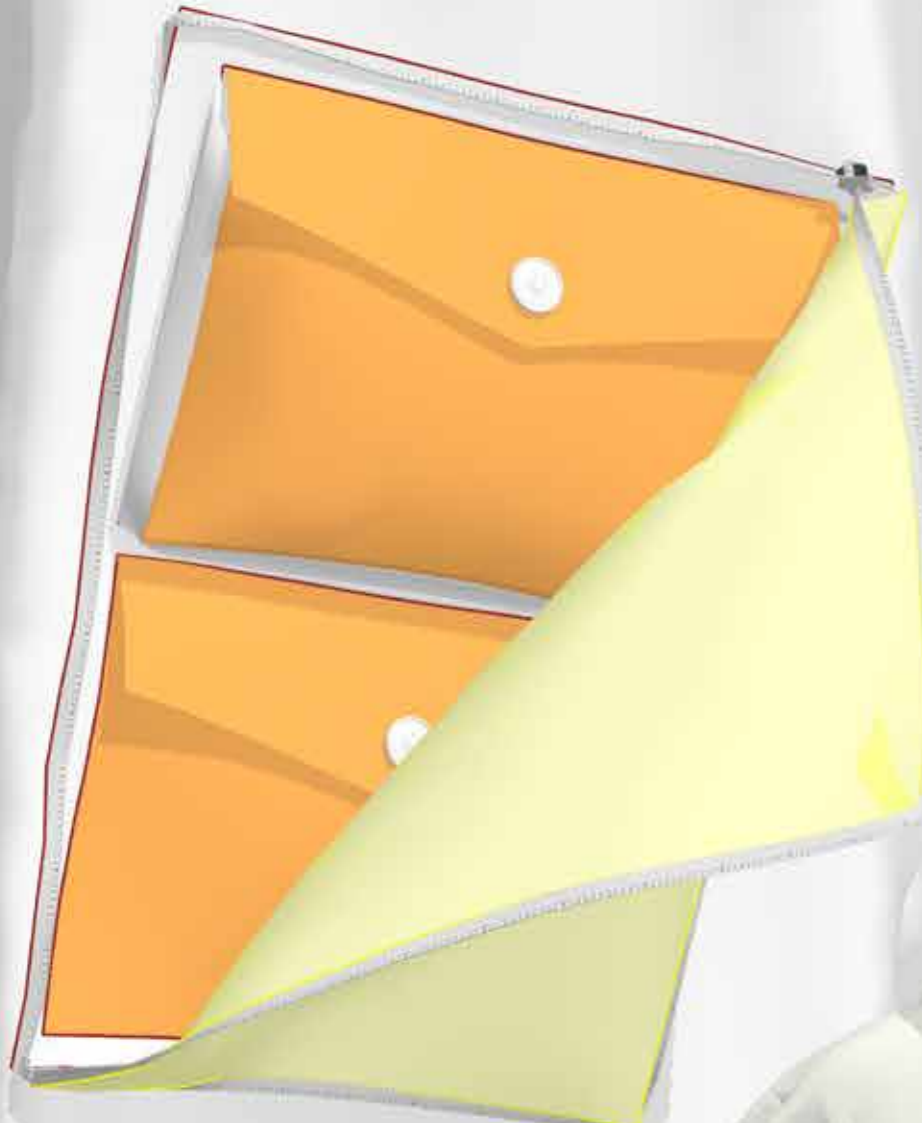




**-PRINT  
DEVELOPMENT**

**DESIGNING WITH  
MILITARY AND  
TREND RESEARCH**





**COAT 2  
DEVELOPMENT**





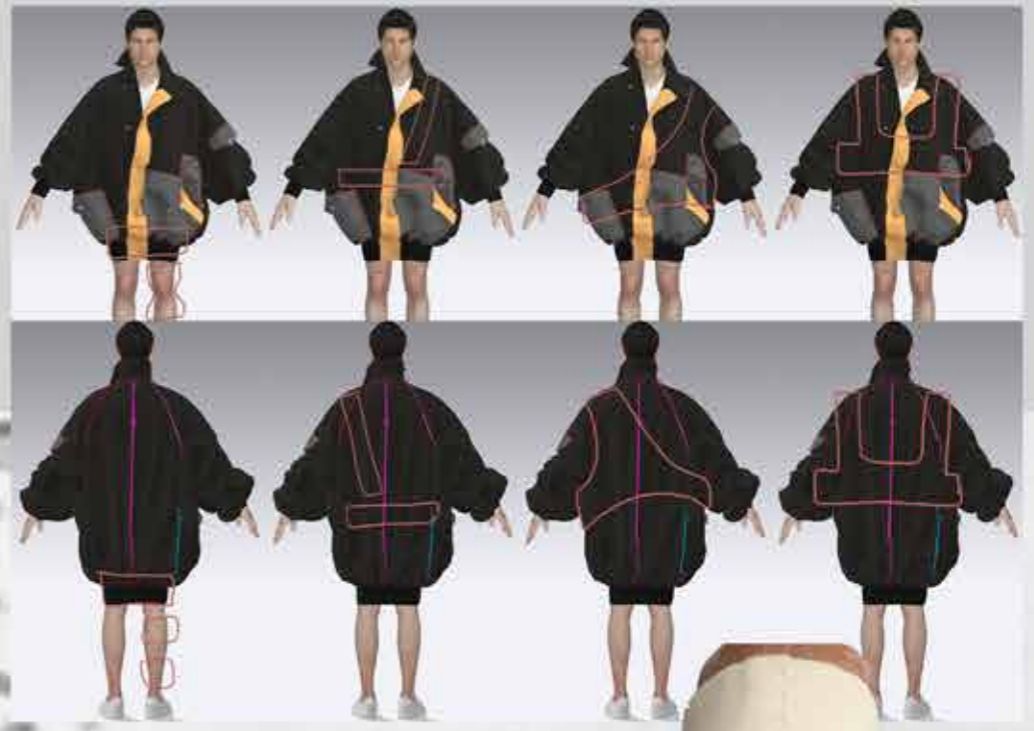
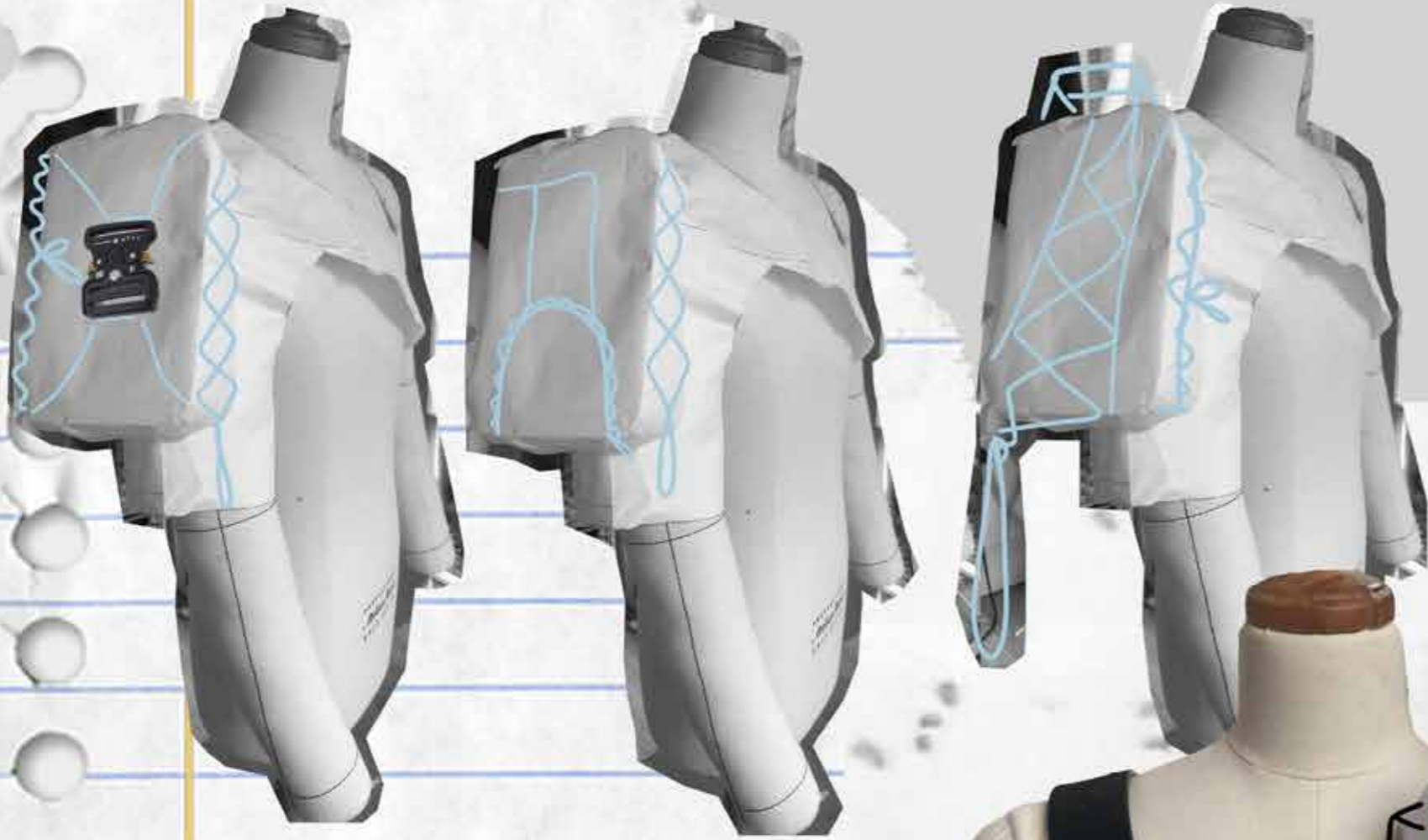
# - TOILING

- Development  
silhouette and detail



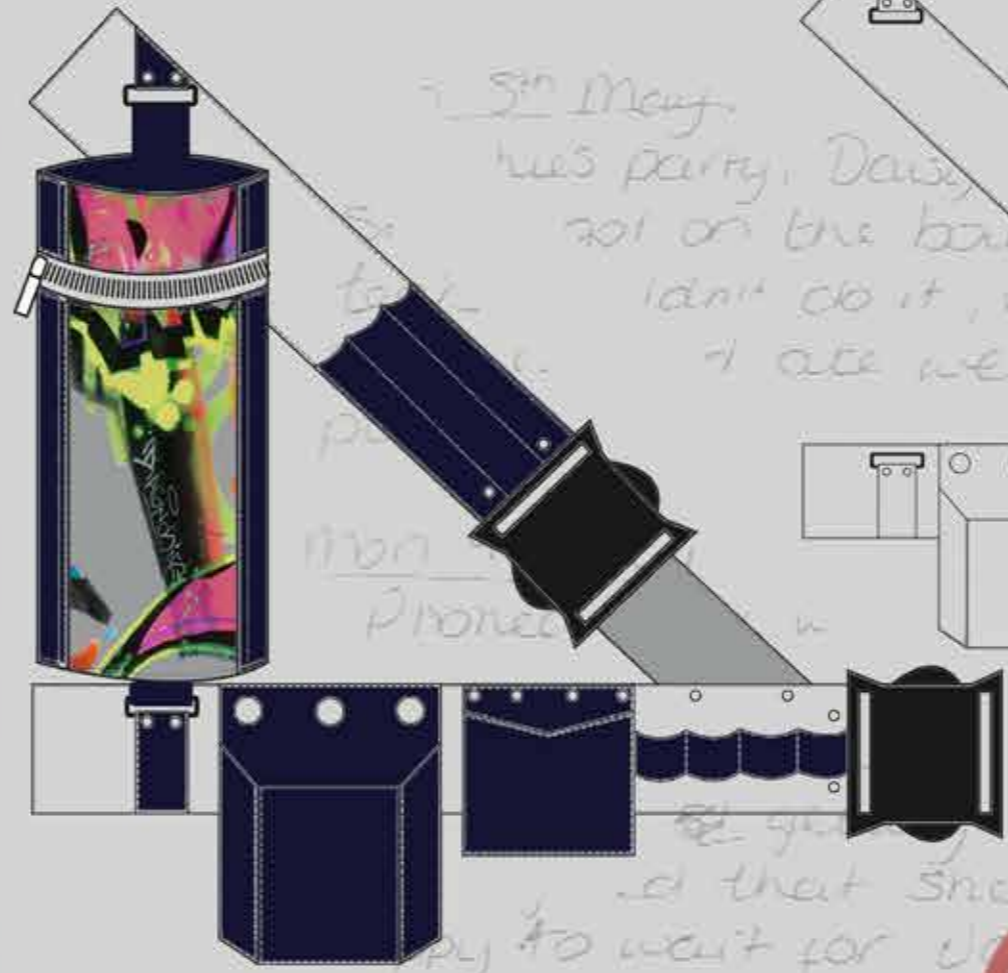
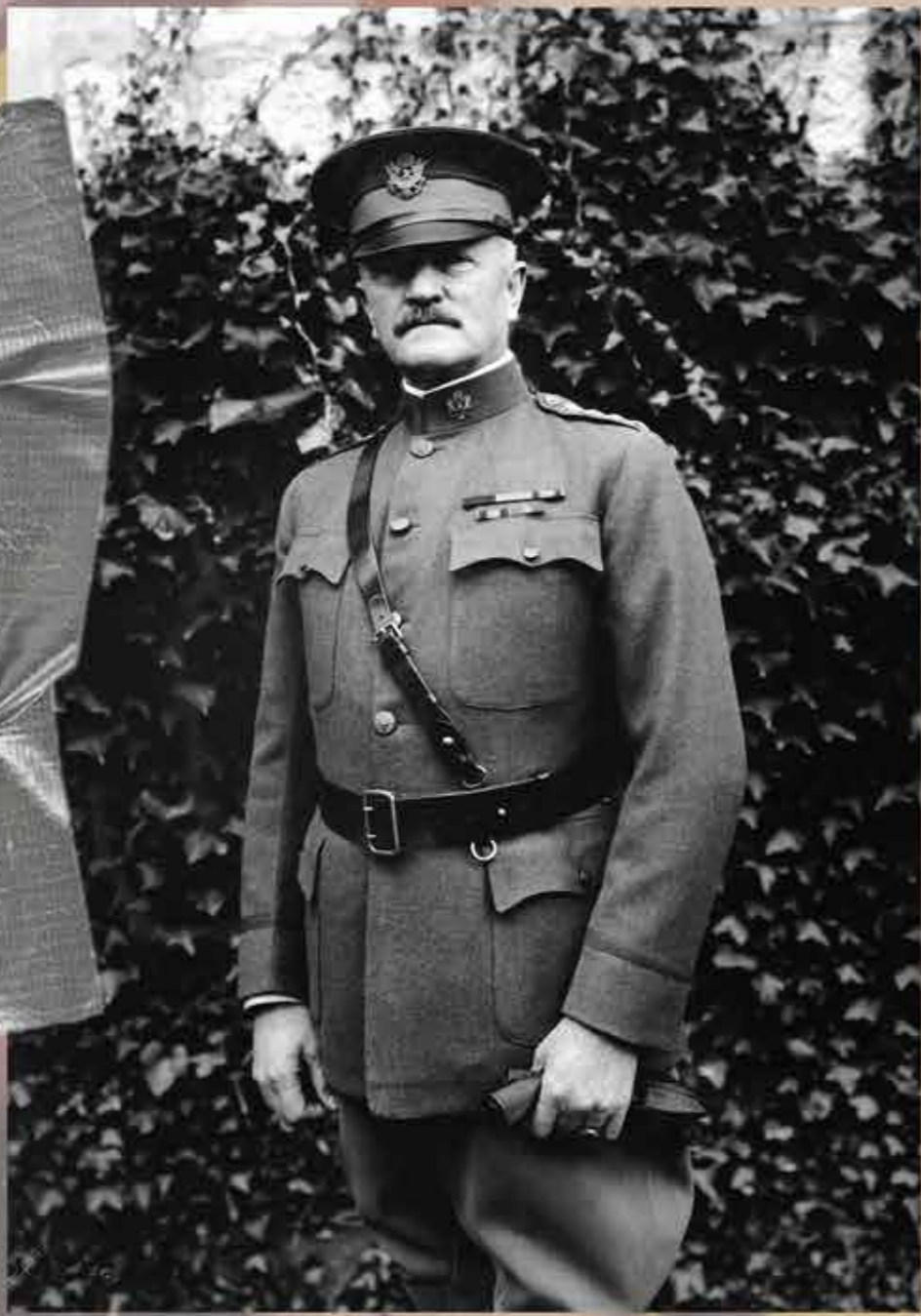


# ACCESSORY DESIGN DEVELOPMENT

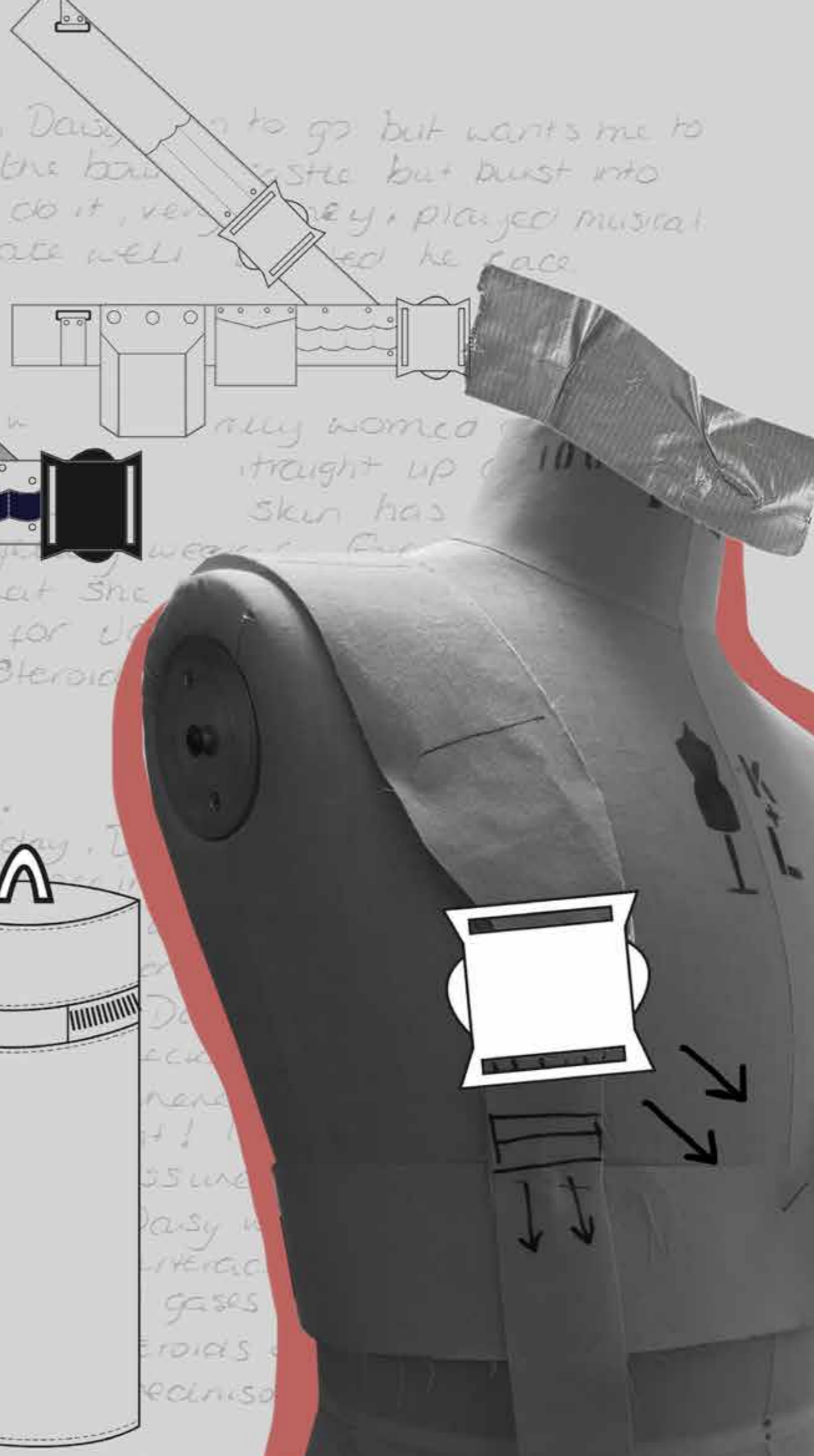
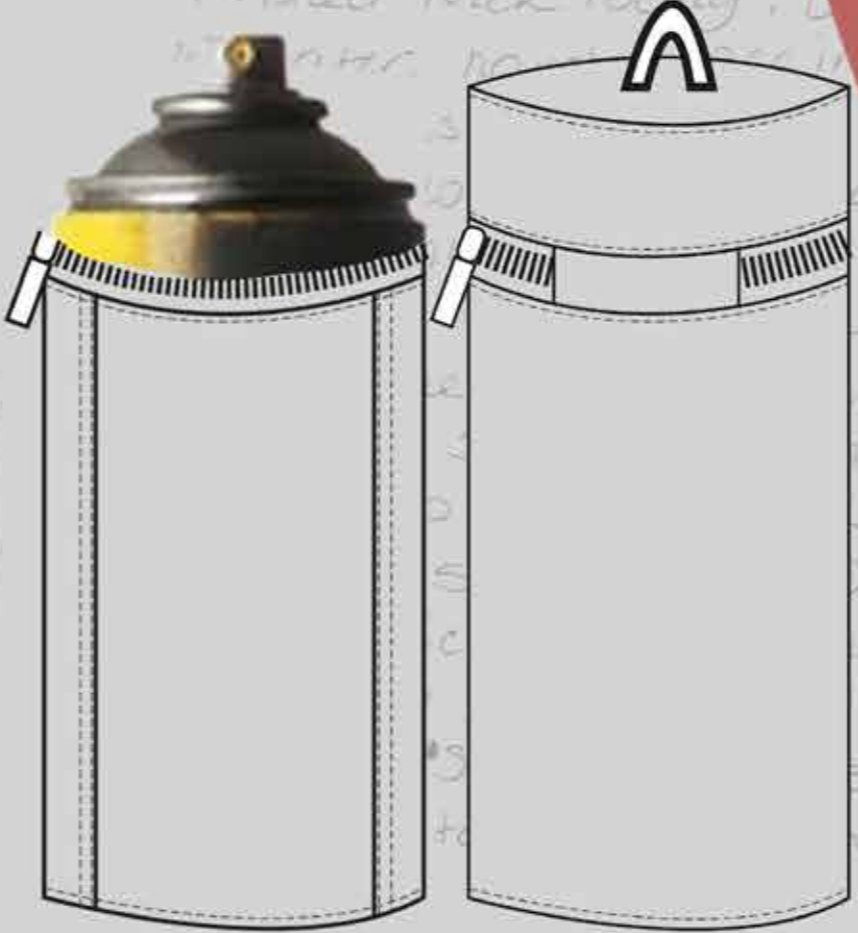


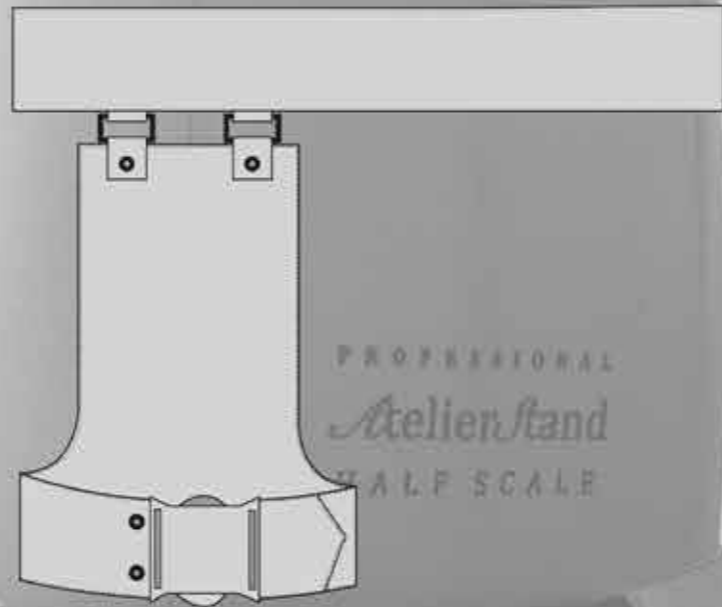
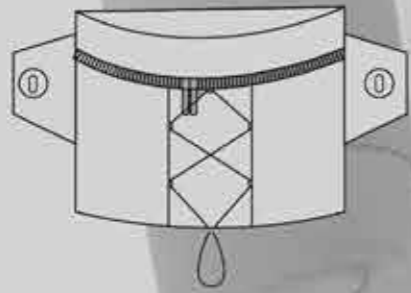
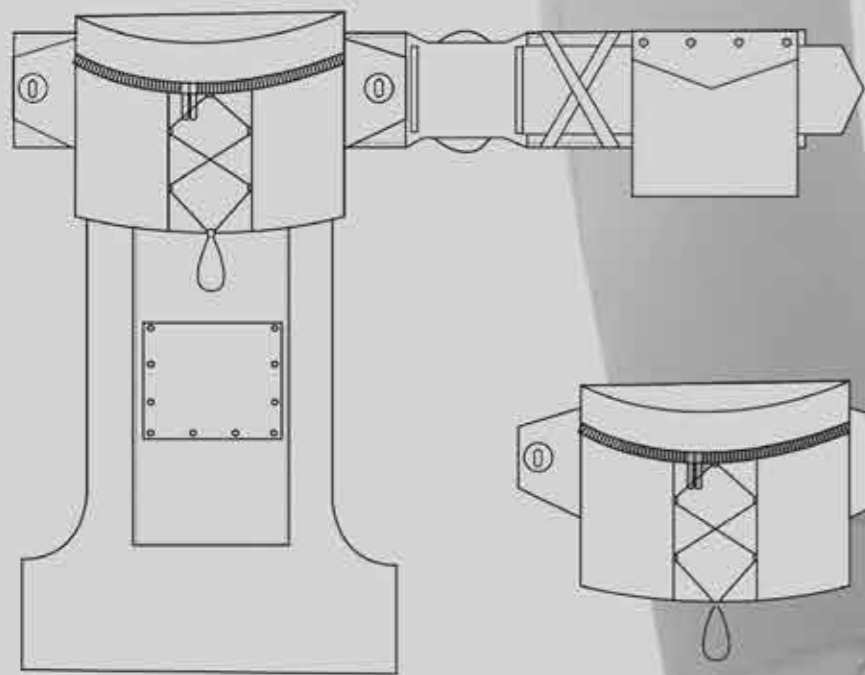
**I HAVE TAKEN  
INSPIRATION  
FROM MILITARY/  
PARATROOPER  
UNIFORM, COMBINED  
WITH ILLEGAL SPRAY  
PAINTING THEMES FOR  
MY ACCESSORY PIECES  
TO CREATE MULTI-USE  
ACCESSORIES WHICH  
CAN BE WORN IN MANY  
DIFFERENT WAYS AND  
ARE BOTH SMART AND  
FUNCTIONAL**





# HARNES DEVELOPMENT

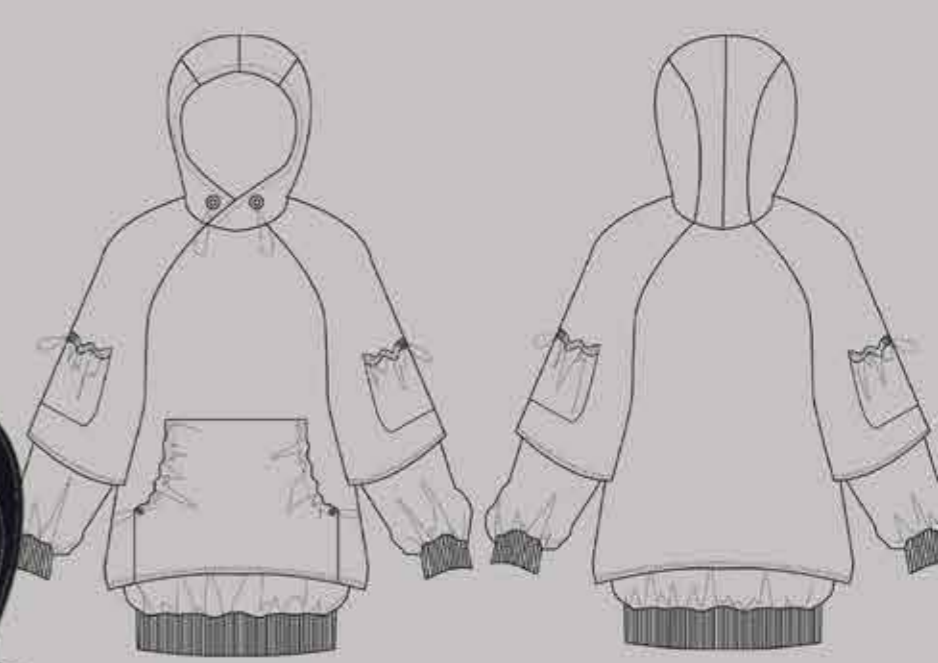
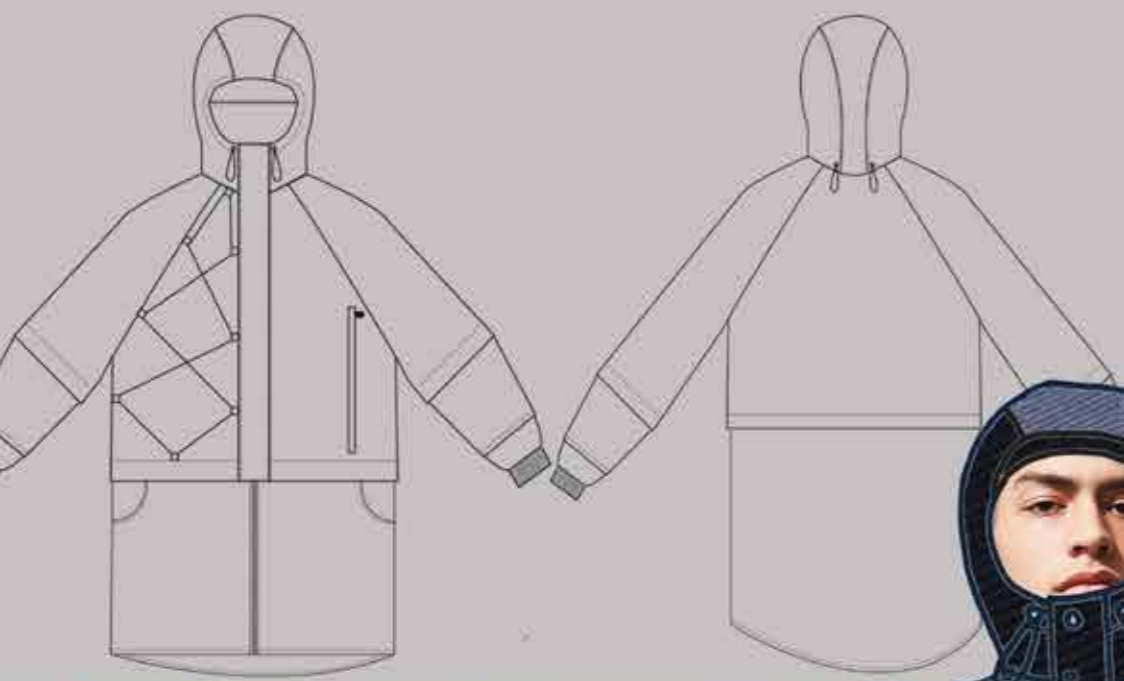




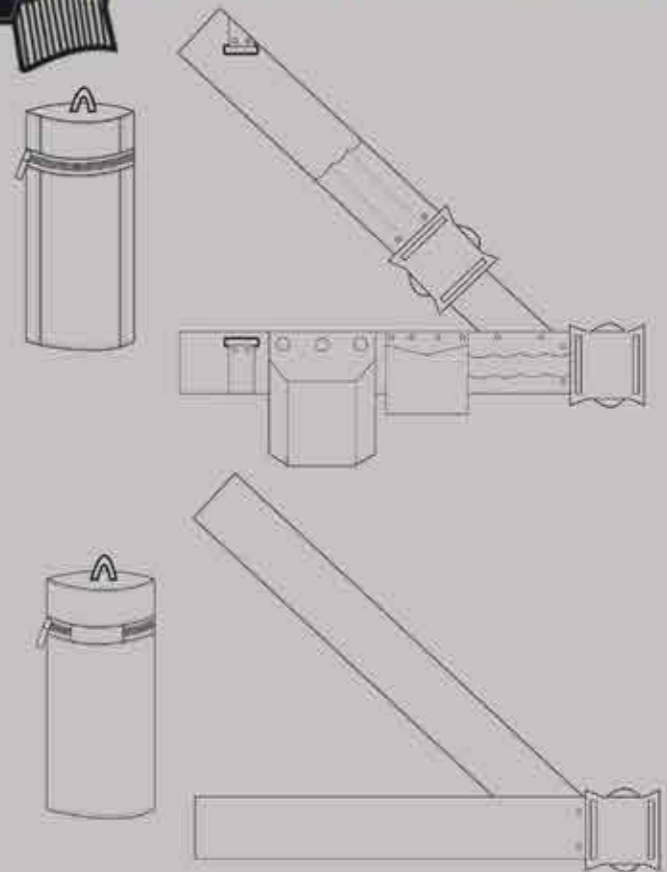
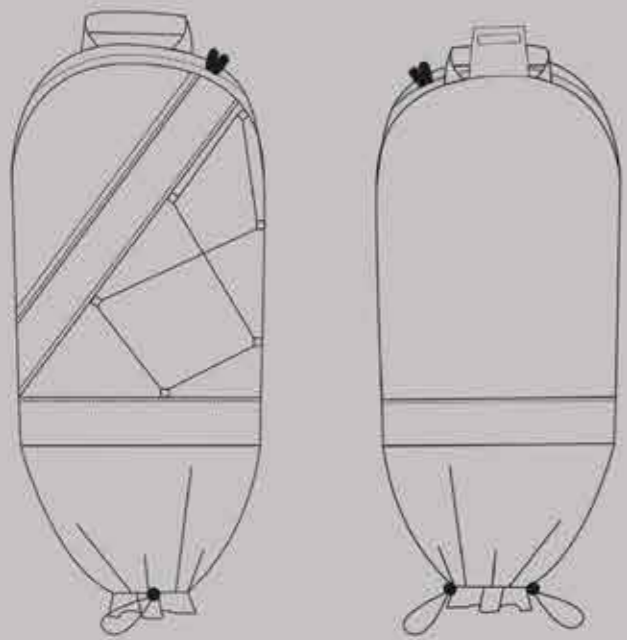
PROFESSIONAL  
*AtelierStand*  
HALF SCALE

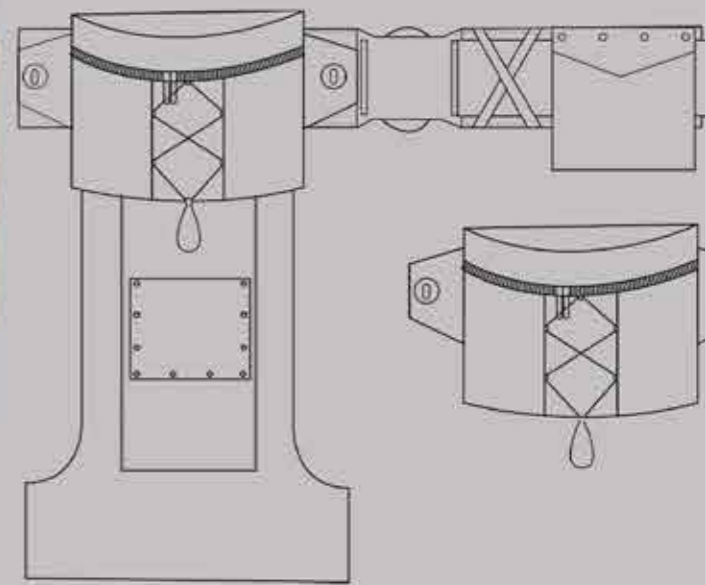
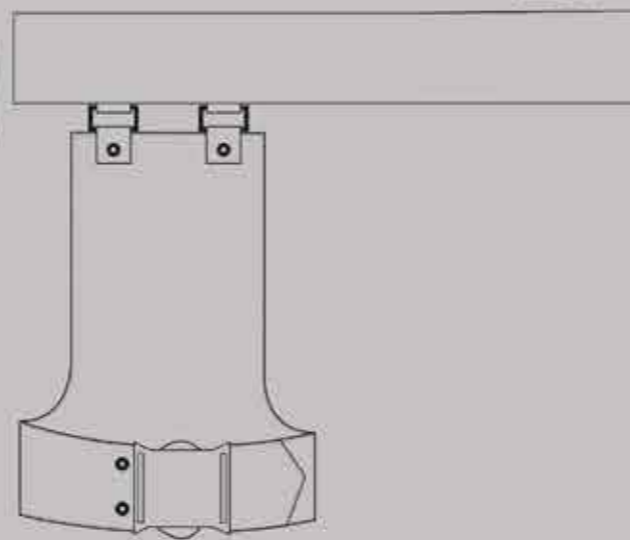
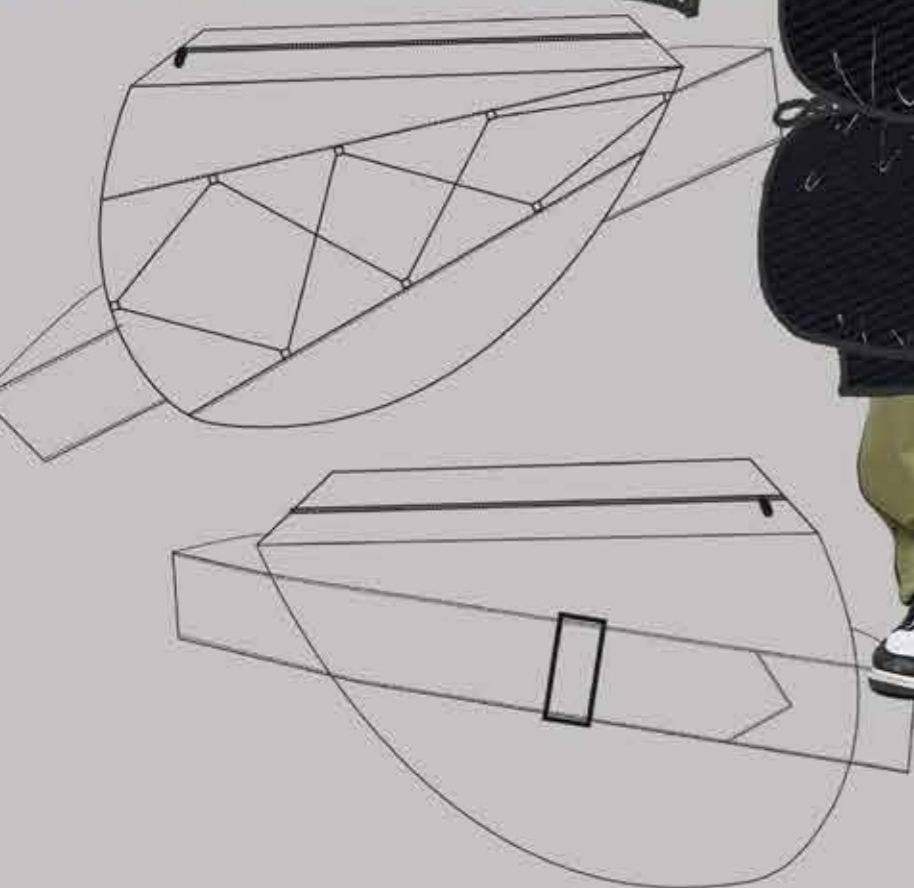
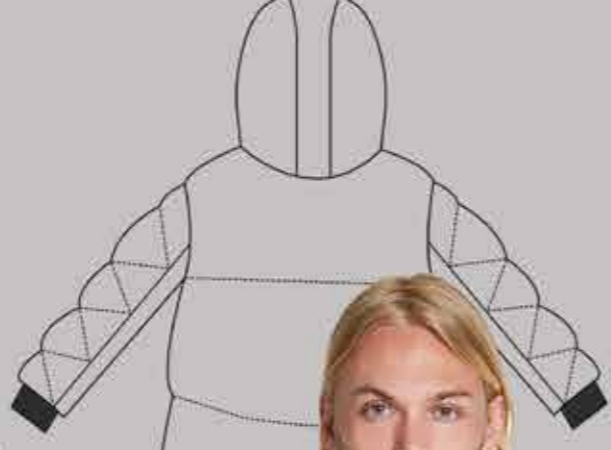


**THE TOILING AND  
DESIGNING OF DIFFERENT  
ACCESSORIES TAKING  
REFERENCE FROM  
GRAFFITI ARTISTS AND  
THEIR EQUIPMENT.**



# LINE UP









# FINAL OUTFIT

- HOODIE
- HARNES
- COAT





**2ND COAT**

**-ORIGINAL GRAFFITI POCKET DETAIL**