

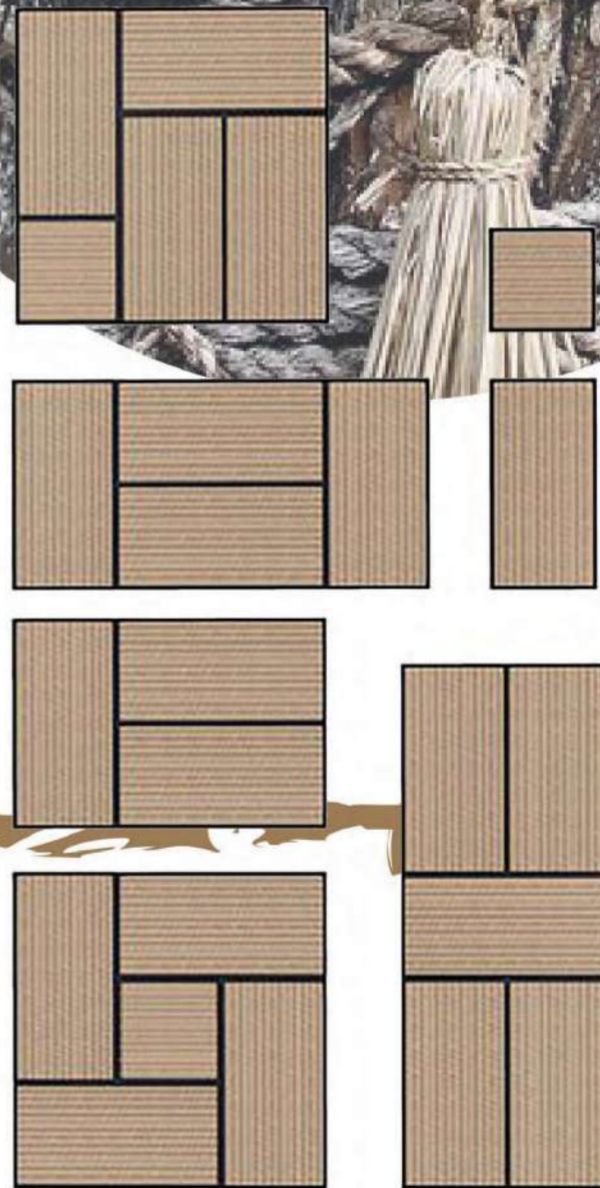
My graduate collection pays homage to my Japanese heritage - a culture of meticulous craftsmanship that has utterly captivated and shaped my perspectives and insights as a growing knitwear designer. A simple phrase that became a constant in the collection's decision-making is "maintaining *over* obtaining." My knitwear designs are a direct critical response to the ever increasing desire to 'obtain' new fashions and trends. Instead, my collection aims to celebrate the joys of continuous wear and the rituals of dressing in the same garments again and again.

Inspired by Japanese crafted Tatami flooring, which pieces together depending on the user's needs, the product I have designed is an oversized transformative piece, which can be styled as either a large coat, jacket, or tote bag. The panels correspond as both parts for a coat, and when reconfigured, work together to create a bag. The knitted sections are held together with trims that enact as tessellated loops- which can be laced together depending on the desired fit. This allows full autonomy for the wearer to decide on how they style the product. Furthermore, the intricate nature of the product being laced up reflects the Japanese crafts' tendency to favour time and meticulous effort over a rushed process. The fabric is knitted in a two colour tubular, padded jacquard. This allows the product a density and weight which is durable and timeless. It is also knitted in a brushed alpaca/ wool blend, giving the product an ultra soft and precious hand feel. The pattern of the fabric reflects the inky qualities of Japanese calligraphy and traditional ink paintings. The lines of which, I have always felt capture the Japanese' longstanding appreciation for treasuring slowness and the dedication to engaging in an intensive and ritualistically 'slow' process.

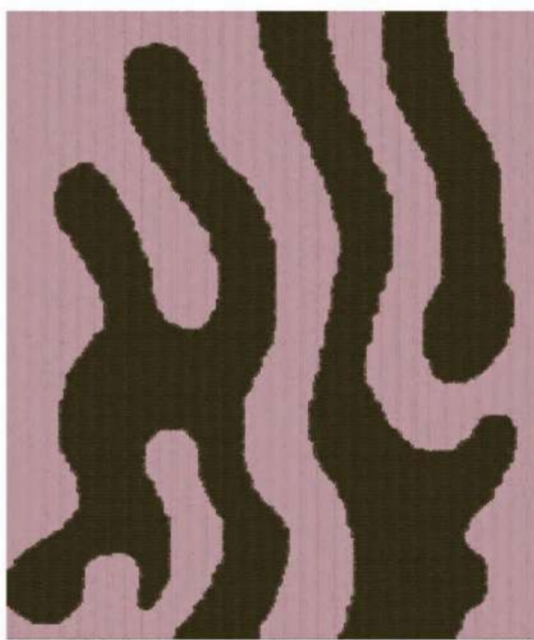
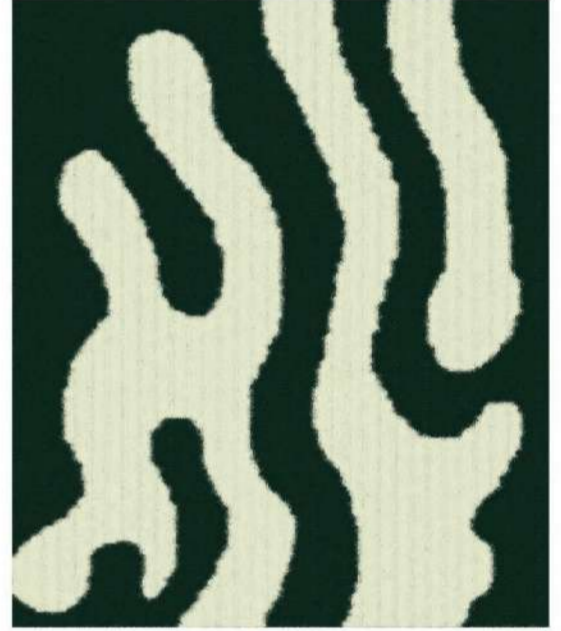
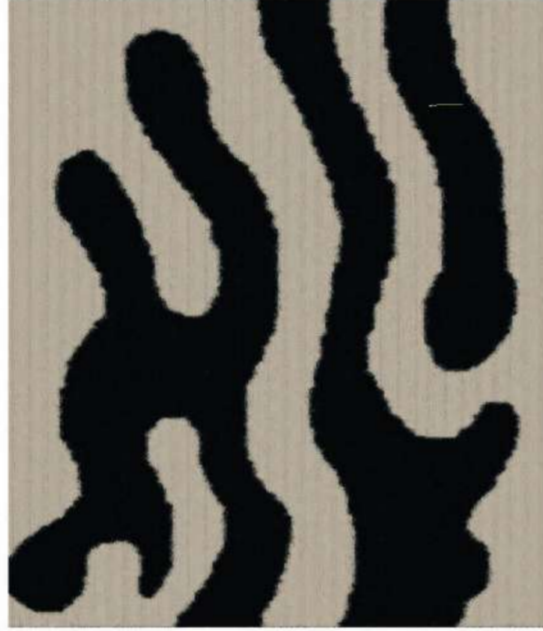
The objective of this product is to encourage the enjoyment of rewearing and styling fashion pieces; to see them as not only decorative to the body, but as an important ritual that showcases each individual's specific tastes as a wearer.

A  
W  
a  
s  
e  
r  
u

合 to join together  
わ to unite  
せ  
る



AW 21/22



A  
w  
a  
s  
e  
r  
u  
合  
わ  
せ  
る

AW 21/22

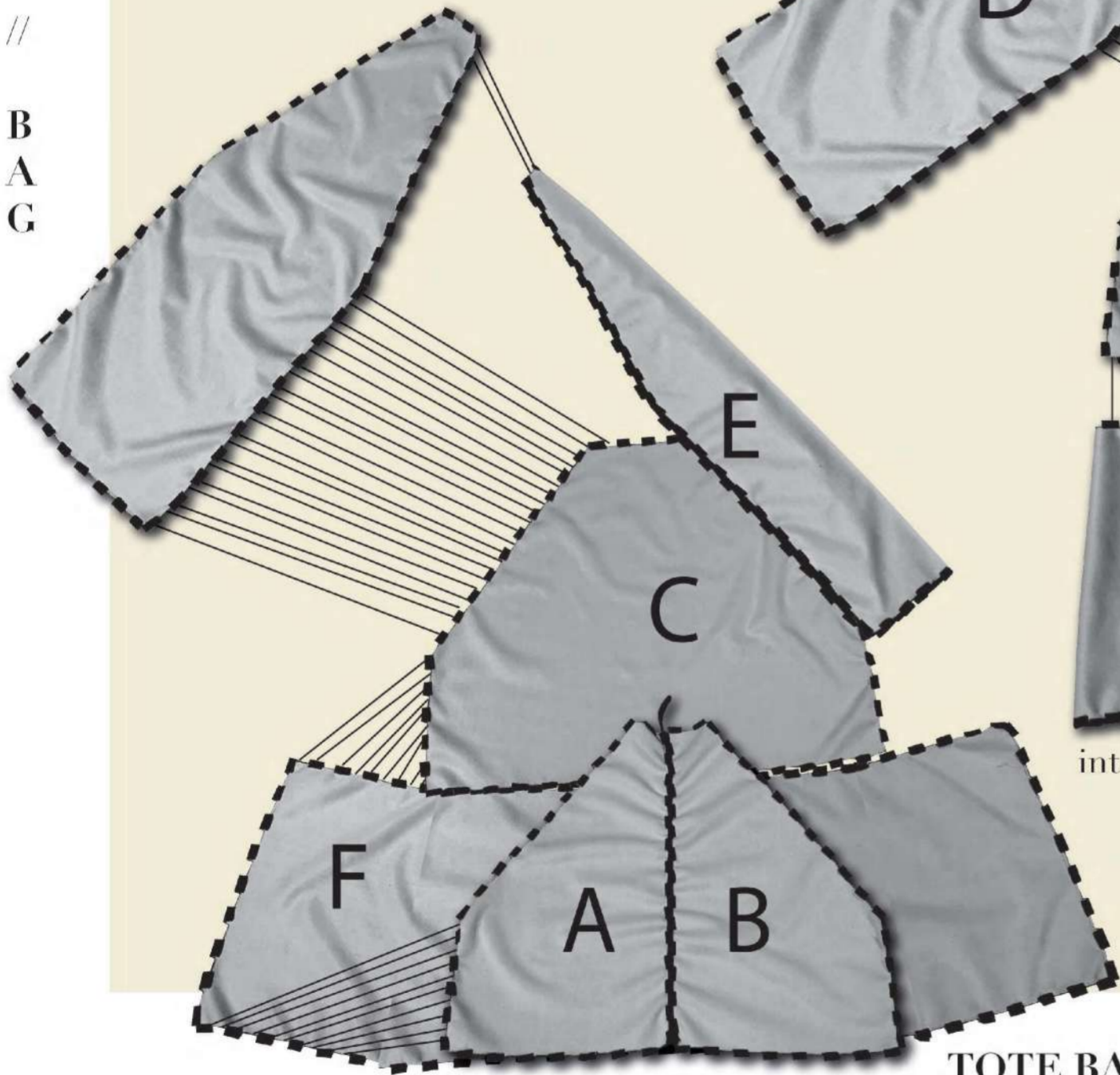
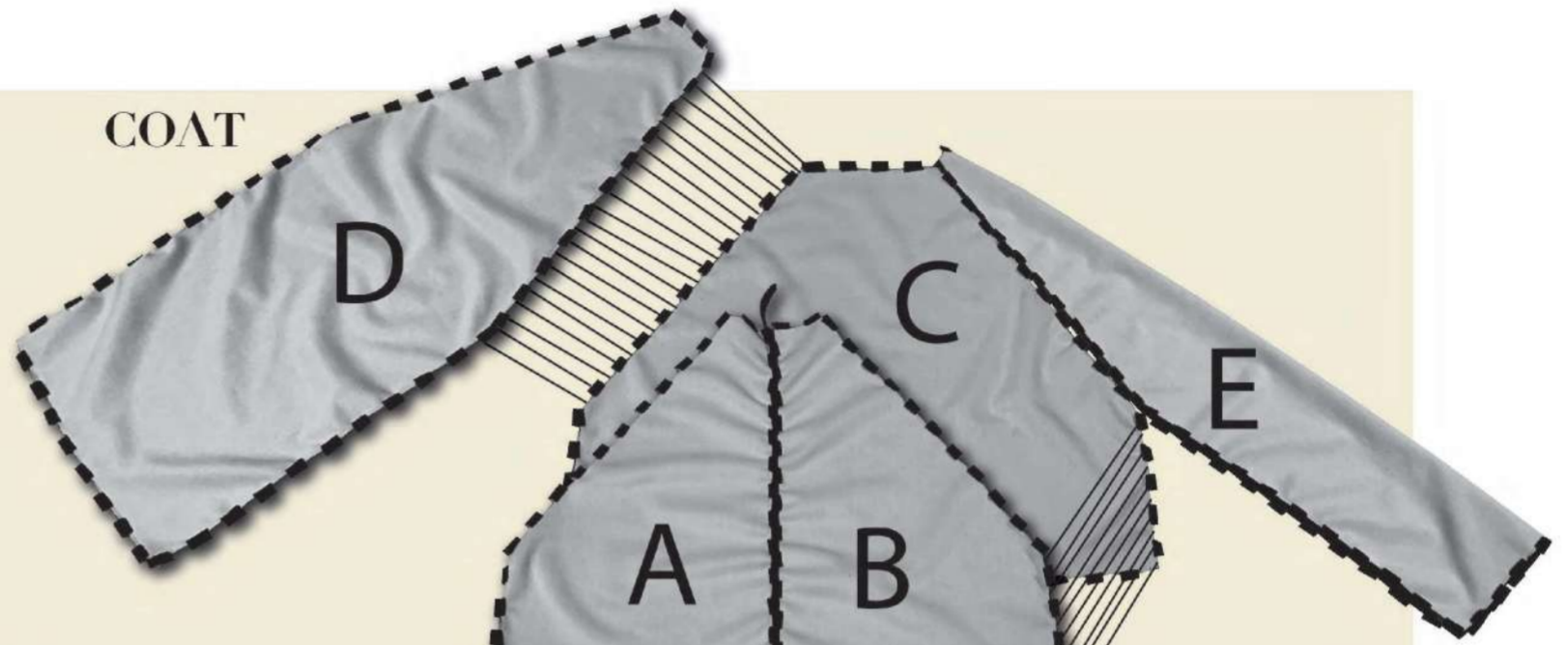


A  
w  
a  
s  
e  
r  
u  
合  
わ  
せ  
る

AW 21/22

C  
O  
A  
T  
//  
B  
A  
G

COAT



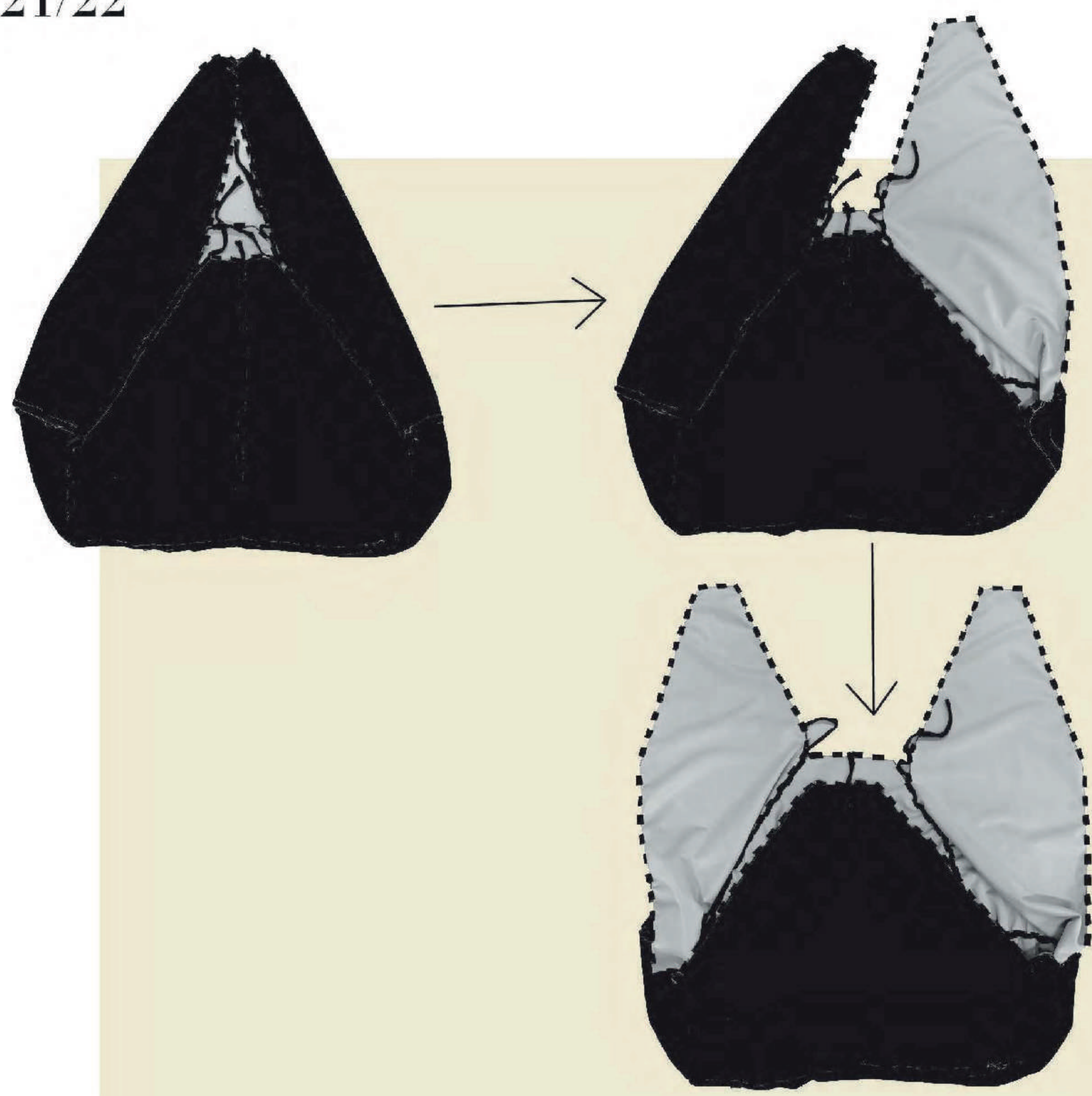
TOTE BAG



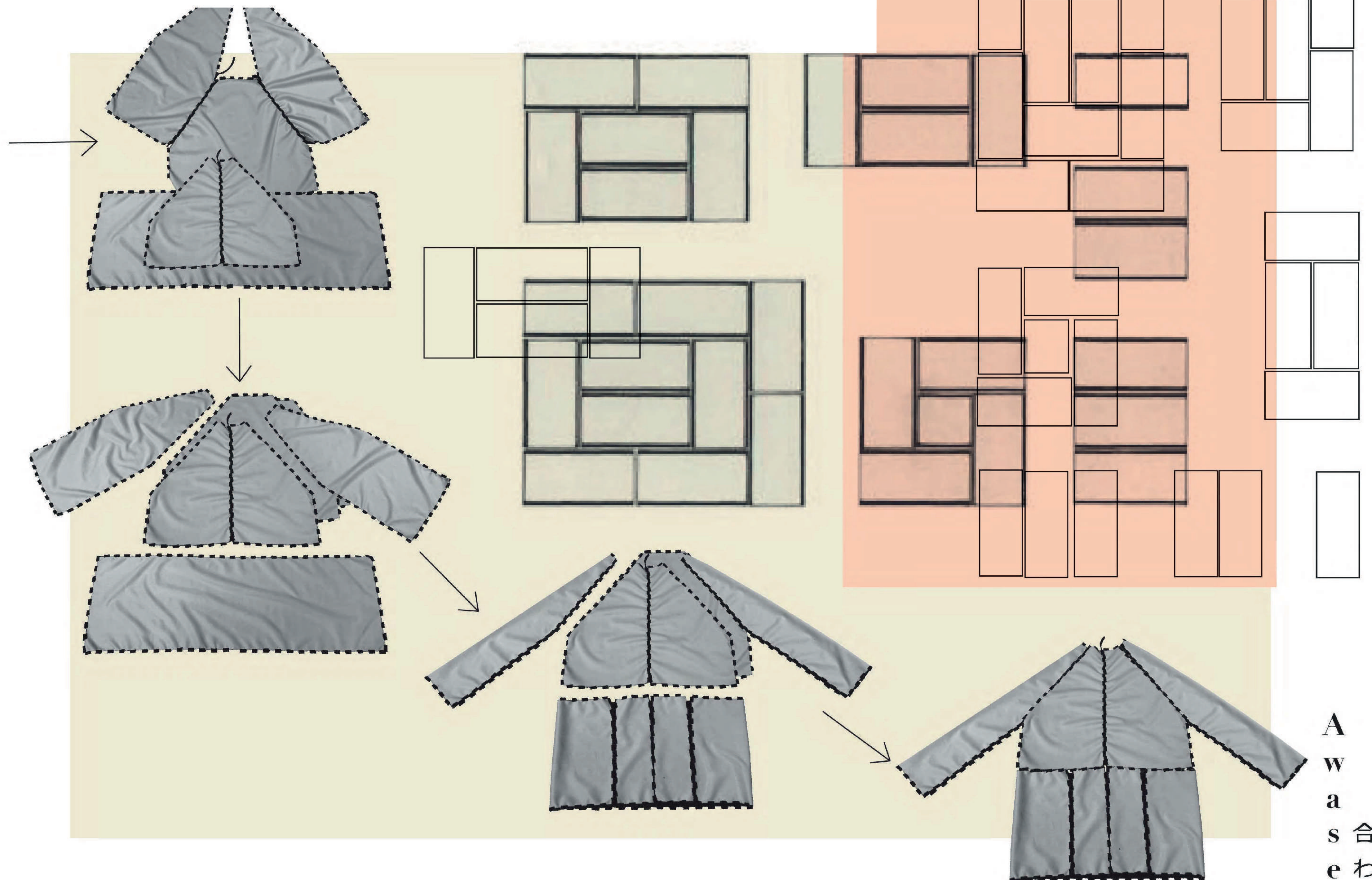
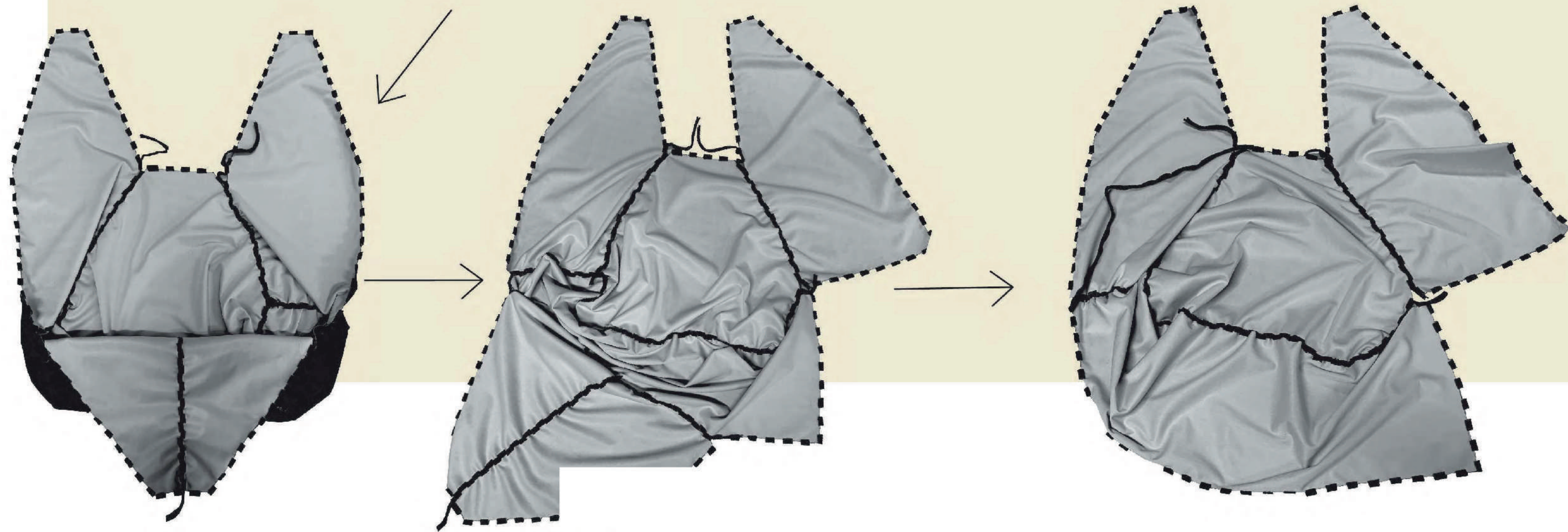
interlocking lace up trims

R  
i  
t  
u  
a  
l  
i  
s  
t  
i  
c  
D  
r  
e  
s  
s  
e  
s  
T  
r  
a  
n  
s  
f  
o  
r  
m  
a  
t  
i  
v  
e

A  
w  
a  
s  
e  
r  
u  
合  
わ  
せ  
る



© rugrabbit



A  
w  
a  
s  
e  
r  
u  
合  
わ  
せ  
る