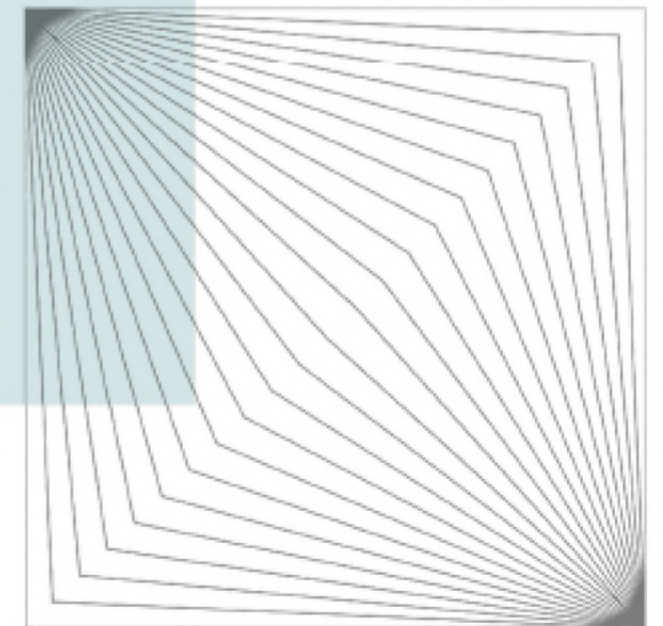


BUTTERFLY EFFECT

- It's a dynamic system that displays sensitive dependence on initial conditions, small changes can cause a series of events which leads to a big impact.
- A difference in a fraction of a fraction makes all the difference.





LEADING LINES

Travel instills creativity, many international exposures has imbibed a global thinking lens within. Going through various location transitions, it developed adaptability and flexibility to deal with dynamic situations, surroundings, cultural and language differences. Blending different cultures inspires me to create contemporary universal looks.

My project tries to remind people that we live in a blended world where people of different race and colour have to accept each other. In a year when racism has been front and center, how can we break out of our own orbits to understand the life experiences of other people, especially those of other races?

My concept Leading lines originate from the visual graph of the butterfly effect, which consists of reiteration of lines. Leading Lines inspired me to capture the different visual impact of lines and it's imagery formed due to different placement, repetition, length, texture and width.



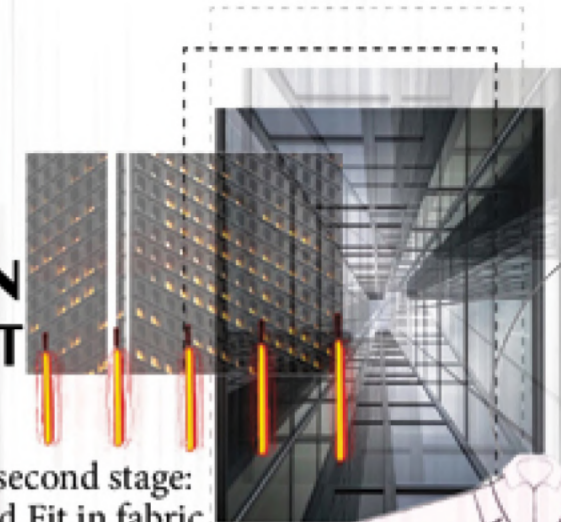
Fabric Swatches



Initial strapping ideas developed into print.



DESIGN DEVELOPMENT



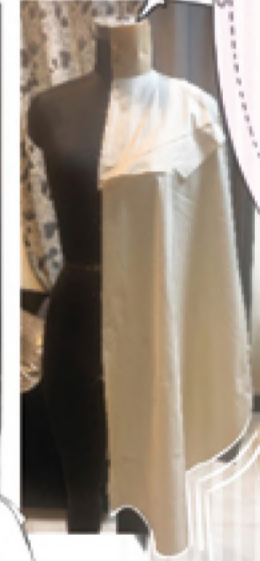
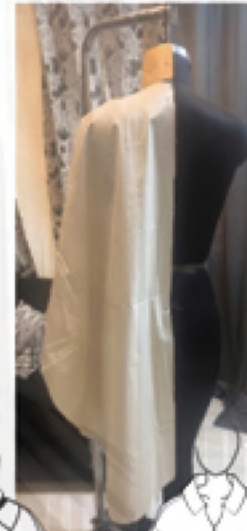
Toile-second stage: Fall and Fit in fabric

Paper Toile-First stage: dropping the shoulder.

Toile-second stage: Fall and Fit in fabric



Paper Toile-First stage: Panels to create the pattern



Pocket Detailing



Fabric Swatches



Initial designs exploration which led to the final design with a convertible collar.

Exploration of print position

STEP 4: Making the second twirl with only one strap and the rest would be print detailing on the final top. This twirl consists of a lining to ensure a clean and finished look.

STEP 2: Exploring strap detailing at the neckline which eventually became print to minimize restriction or movement of the body

STEP 1: Made paper pattern developed from the stretch top pattern block

STEP 5: Making the third twirl by adding princess style lines in the desired position to contour the body and give a perfect bodycon fit. Also adjusting the neckline and giving it a refined look.

FINAL FINISHED LOOK

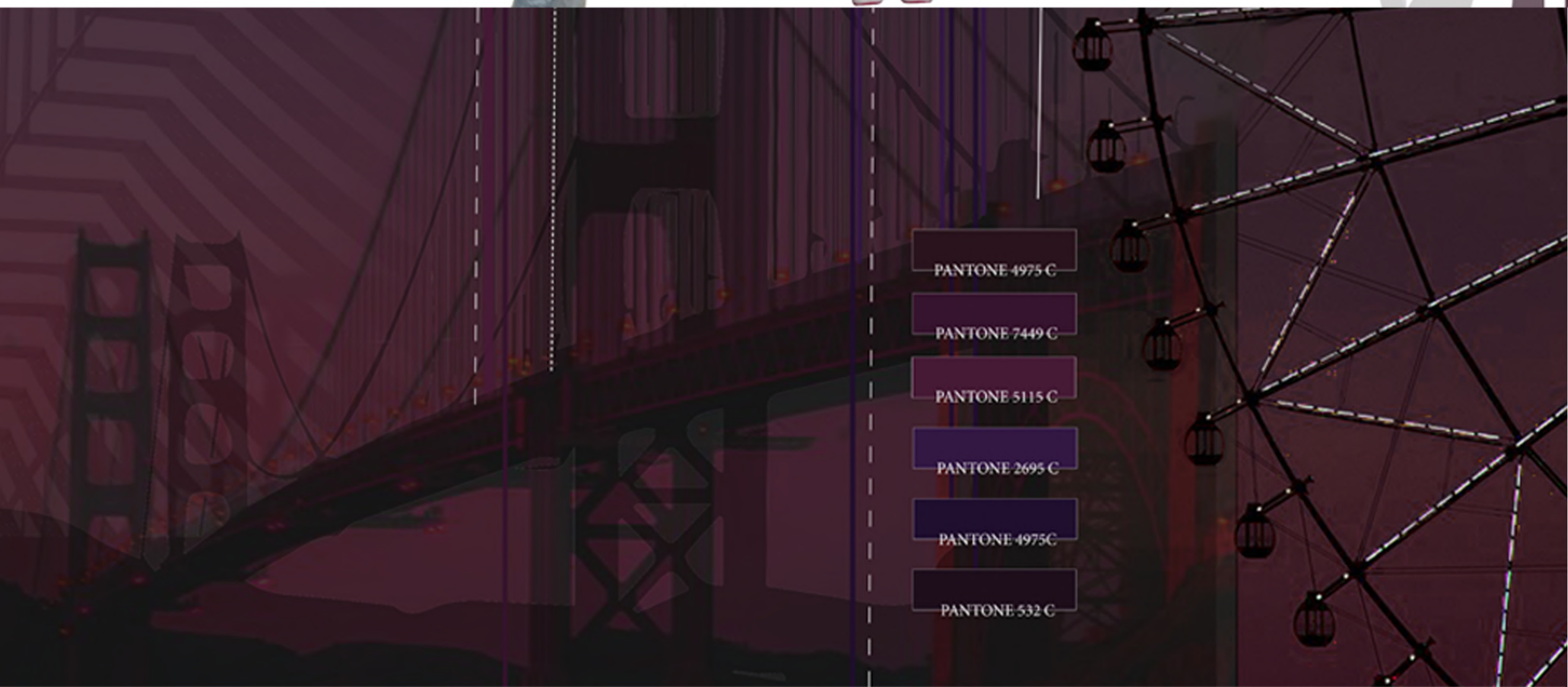
Initial pattern development by adding style lines to a simple leggings pattern

Patterns cut and sewed together on the actual fabrics with colour blocking techniques.



STEP 3: Exploring strap detailing at the neckline on the first twirl made to check the fit of the garment.

STEP 6: Creating different prints and executing it on the pattern developed.



- PANTONE 4975 C
- PANTONE 7449 C
- PANTONE 5115 C
- PANTONE 2695 C
- PANTONE 4975C
- PANTONE 532 C

FINAL LINE-UP



Shadow Spaces

Shadow Spaces, London artist Owen Gildersleeve collaborated with still life photographer Stephen Lenthall to craft a series of miniature architectural paper spaces, using "light as a map to shape each form".

The aim was to study the relationship between space, form, light and its natural counterpart, shadow. Stephen Lenthall made a series of miniature architectural paper spaces, using light as a map to shape each form. Built with simple white paper, each form is defined by the way it reflects light. "This resulted in bold, geometric forms, void of all unnecessary ornamentation" explains Owen. "The forms were then further brought to life with a layer of intense light - creating crisp, dramatic shadows. The final effect is a powerful display of capturing light and casting shadow."



