

E|EN
MERRALL



'fungi', by Sren Pilsen and
offe Perren

The structure and development
of fungi



Hyphae, or hyphae, grow out radially from the spore and form a constantly
expanding network. Most fungi are made up of hyphae which combine to form more or
less solid bodies of tissue. A number of fungi are single-celled, such as the yeast
which develops by division (see illustration)

Fungi are found in all parts of the
world, and are found in all kinds of
environments. They are found in
soil, water, and air. They are found
in all kinds of food, and some are
used in the production of food. Some
fungi are harmful, and some are
beneficial. They have beautifully
colored fruiting bodies.



Handmade lace, inspired by
fungi Mycelium

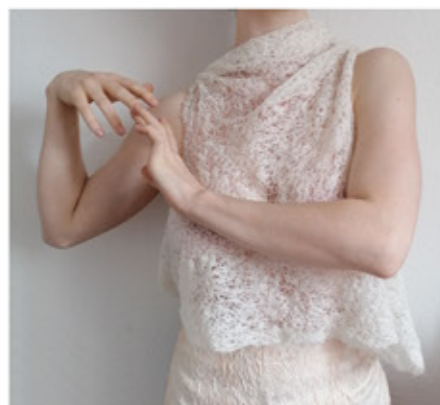
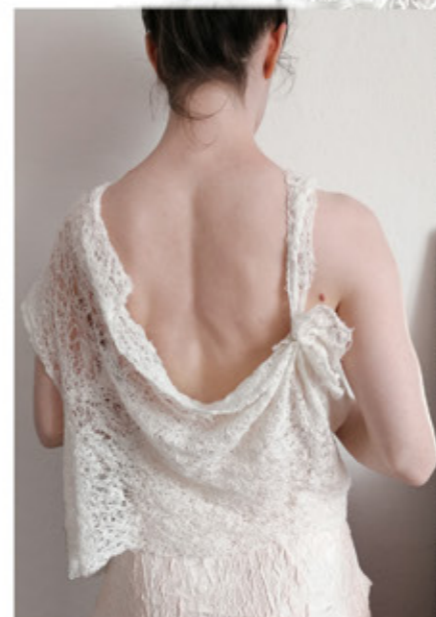
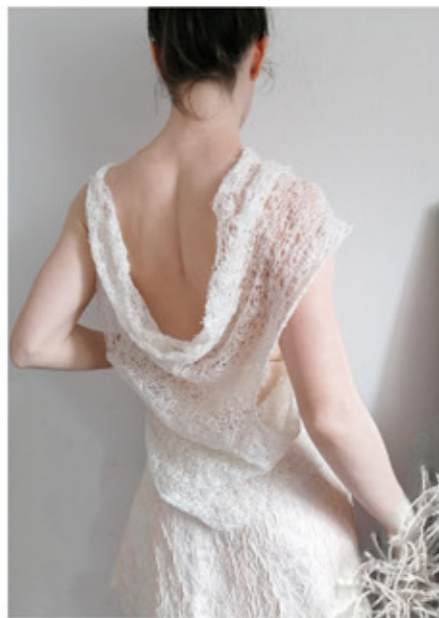
ELLEN
MERRALL



Innovative draping and 3D
work influenced by fungi imagery



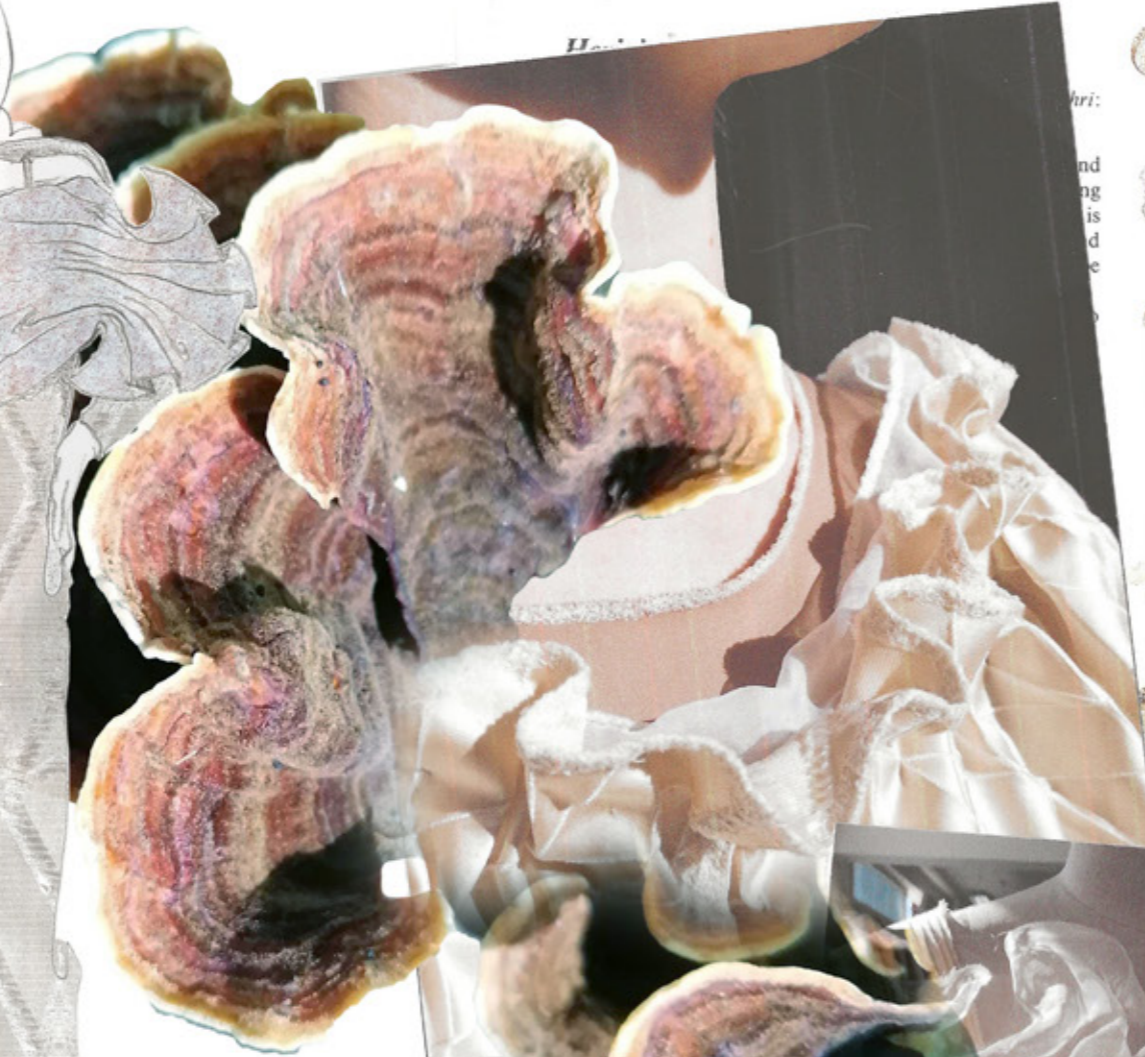
ELLEN
MERRALL



Handmade lace top: freehand embroidered

**ELLEN
MERRALL**

Turkey tail fungus inspires
folds, pleats, tucks and pinches



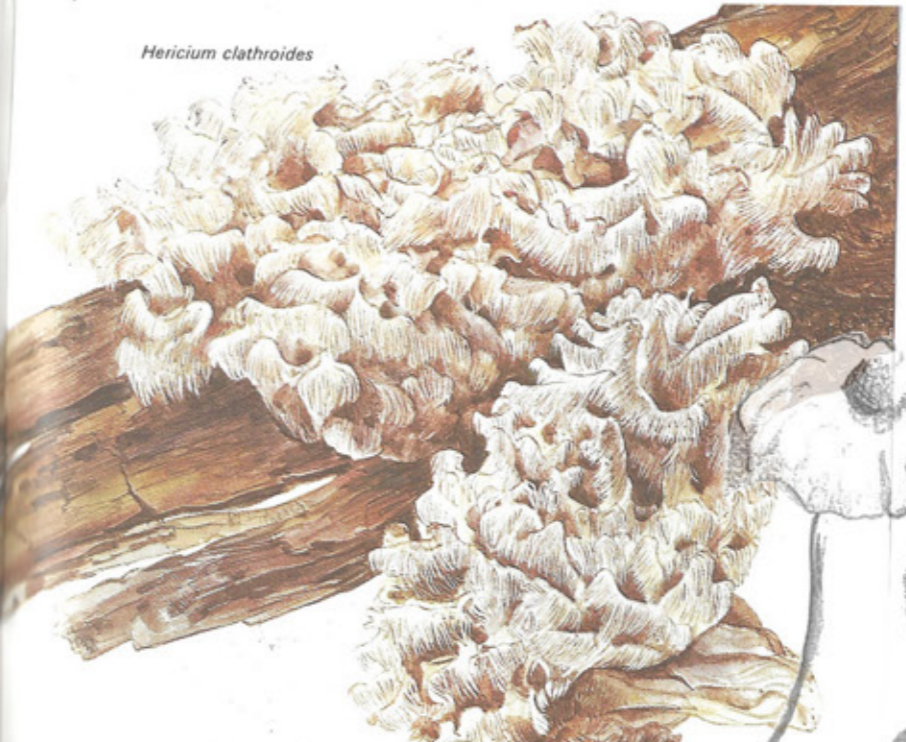
is therefore
the stem up
single occur
at times of ye
September and

78-79



Ear-pick fungus

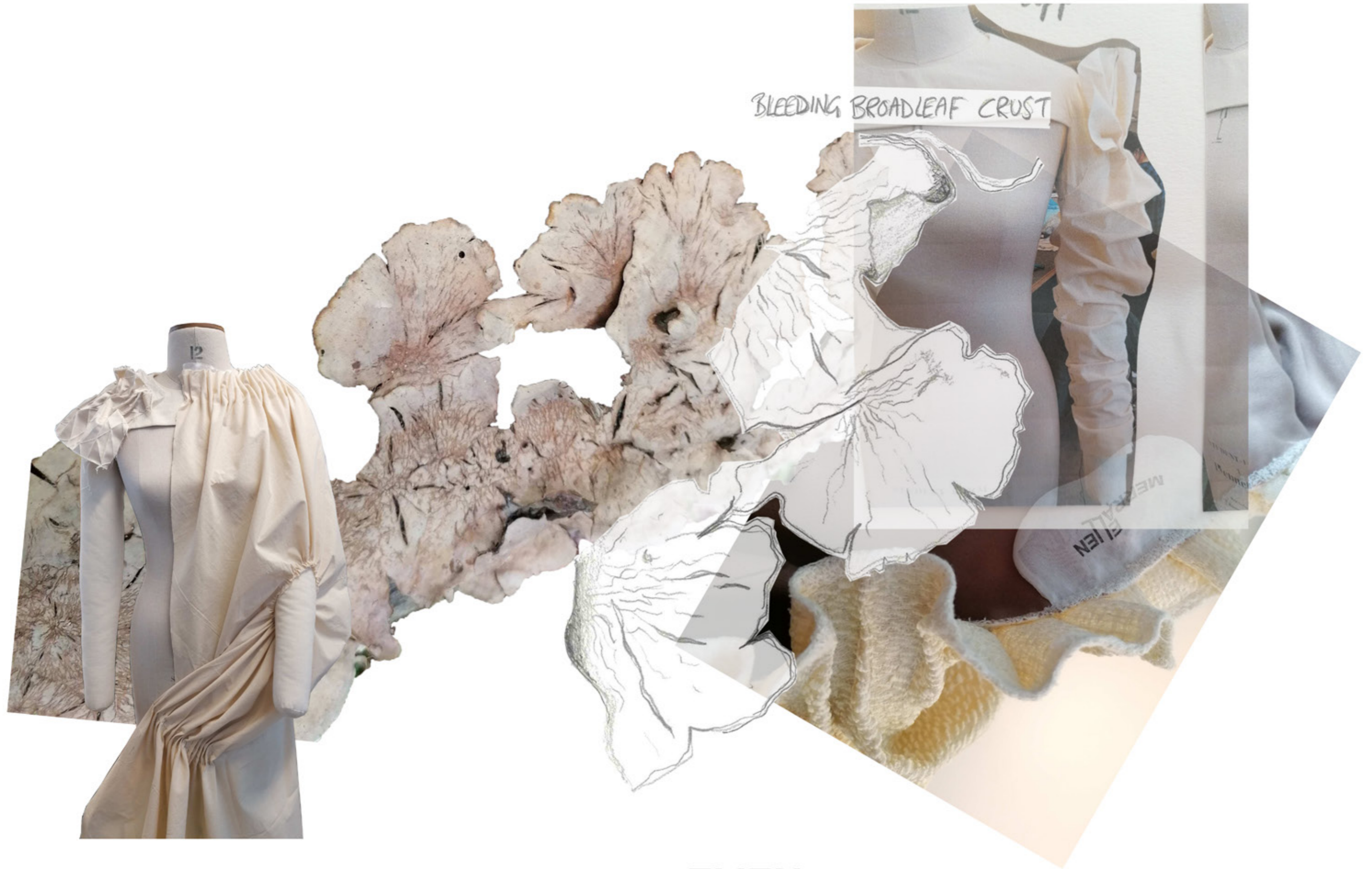
Hericium clathroides



Crepidotus cirrhatus



ELLEN
MERRALL



ELLEN
MERRALL



I took more 'out there' shapes, I find them to be a good starting point to then bring in a bit and create more designs that are a bit more wearable. The silhouette inspired by the puffball fungi is very applicable in a variety of sizes and positions which I've enjoyed exploring. Use as a whole silhouette.



Cantharellus atrorubens C. M.



Innovative draping and 31) worn influenced by fungi imagery



ELLEN
MERRALL



Lycoperdon perlatum Ⓞ

from Greek *lykos*: wolf and *perdomai*: release wind, in *perlatus*: very broad)

Kind of puffball are found among fallen leaves and trees, in pastures and meadows, and on dry heathland. They are white and glistening in the autumn months, but their spores remain through most of the year. The puffballs, the genus *Lycoperdon*, which covers about a dozen species, belong to a large group of basidiomycetes – mushrooms, or stomach fungi. The Stinkhorn also belongs to this group (see p. 48).

L. perlatum is one of the commonest. It has a thick outer wall with wart-like excrescences, and a thinner inner wall. The spores are produced in the center of the fungus. It is spherical, up to 7 cm in diameter. The excrescences have a chequered pattern. Puffballs with spores are found from September, but they are more common on wood.



having a diameter of 3 cm and 3 cm outer wall. The spores escape through a trifle of the dry outer wall.

angular through a trifle of the dry outer wall.



At first young puffballs have firm white flesh (top). Later the gleba becomes soft and yellow, then yellowish green.



The spores escape into the wind through an opening in the top of the dry outer wall.



The Dress: puffball inspired! Silhouette, shape and detail.





1
Sacket
Mushroom gills = pleats and
pinplets

**ELLEN
MERRALL**



ELLEN
MERRALL



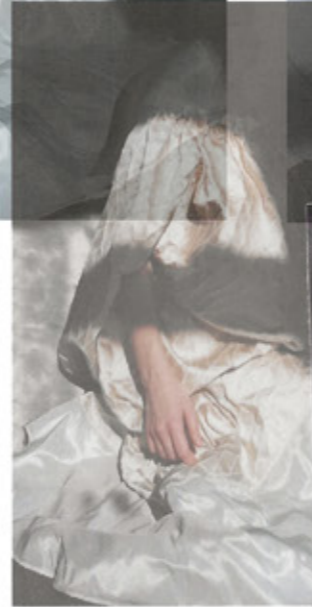
ELLEN
MERRALL



Mushroom gills = pleats and pinholes



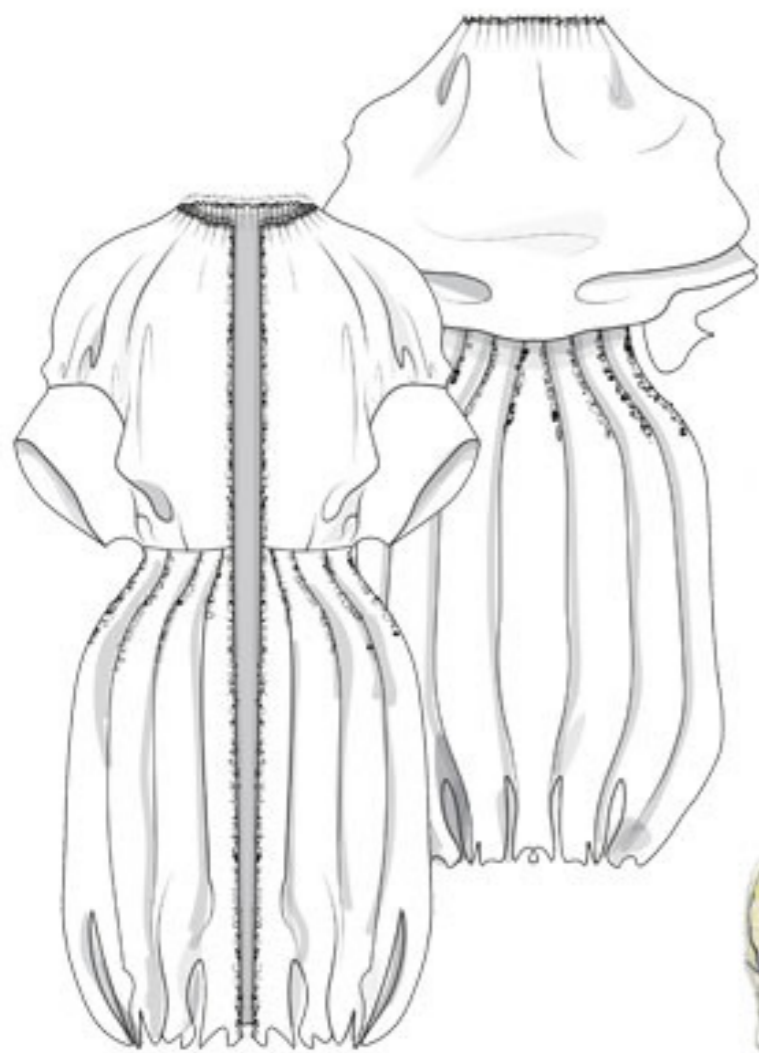
*The Dress: puffball inspired!
Silhouette, shape and detail.*



**ELLEN
MERRALL**



E|EN
MERRALL



**ELIEN
MERRALL**

