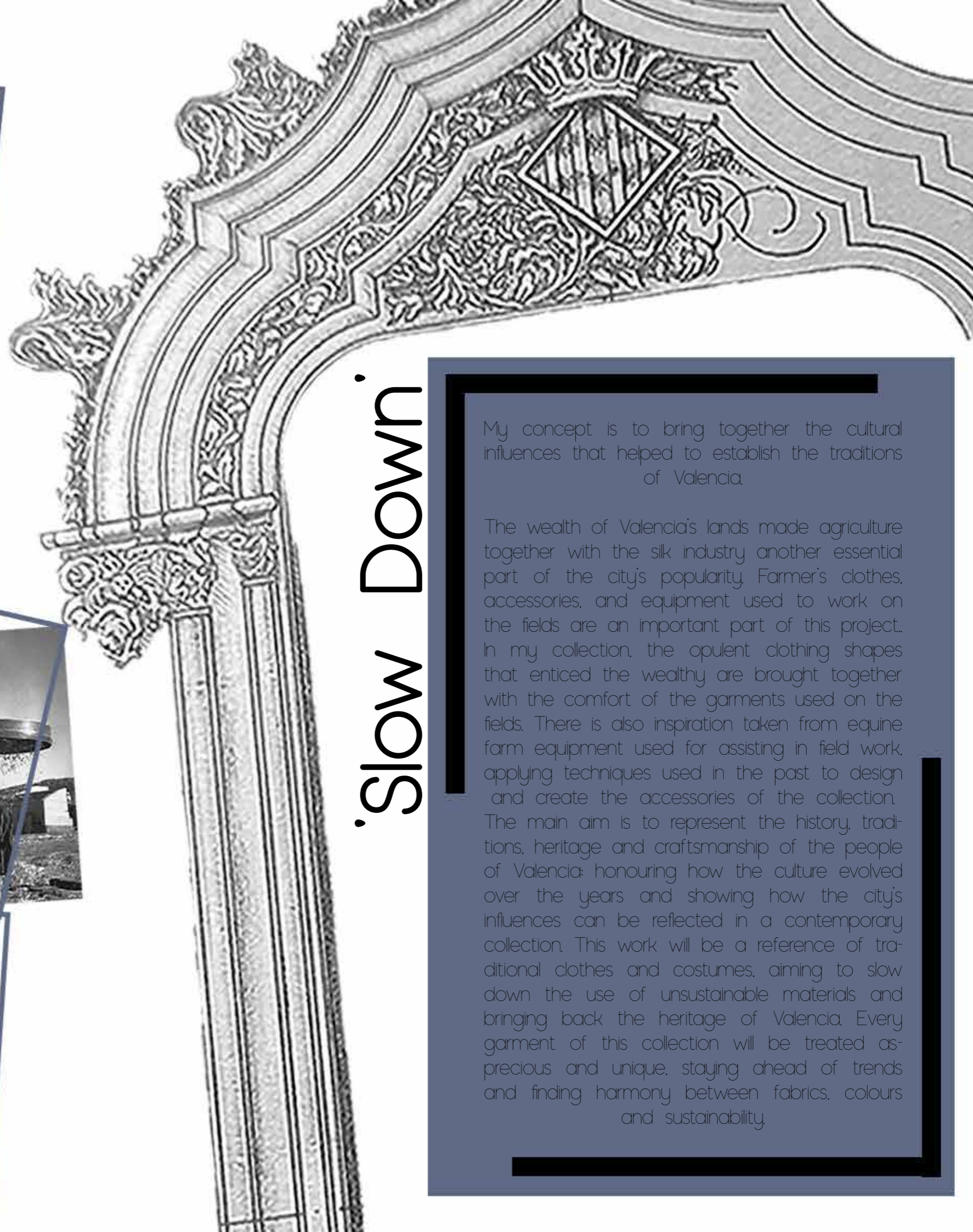


Concept

Valencian Influences



'Slow Down'

My concept is to bring together the cultural influences that helped to establish the traditions of Valencia.

The wealth of Valencia's lands made agriculture together with the silk industry another essential part of the city's popularity. Farmer's clothes, accessories, and equipment used to work on the fields are an important part of this project. In my collection, the opulent clothing shapes that enticed the wealthy are brought together with the comfort of the garments used on the fields. There is also inspiration taken from equine farm equipment used for assisting in field work, applying techniques used in the past to design and create the accessories of the collection. The main aim is to represent the history, traditions, heritage and craftsmanship of the people of Valencia: honouring how the culture evolved over the years and showing how the city's influences can be reflected in a contemporary collection. This work will be a reference of traditional clothes and costumes, aiming to slow down the use of unsustainable materials and bringing back the heritage of Valencia. Every garment of this collection will be treated as precious and unique, staying ahead of trends and finding harmony between fabrics, colours and sustainability.

Customer Profile

Diversity



The customer for this collection is a powerful woman that doesn't need to be empowered. Empowerment does not come through clothing, a mentally empowered woman eats the world. These garments are for all those empowered women, aware of the damage we cause to the environment through fashion.



Powerful women



Fearless women with strong core identities and values who champion diversity to stand against the standardization of beauty.

Fashion comes and goes, clothes get worn until they are worn out, at which point they ultimately end up in Landfills.

Sustainability

Compostable materials



Fabrics made from plants or natural fibres and dyed with non-chemical dyes make garments 100% compostable.

Once the article of clothing has reached the end of its life, all one has to do is remove any reusable buttons and throw the garment in the compost heap.



- Natural
- Organic
- Ethical
- Biodegradable

Esparto grass

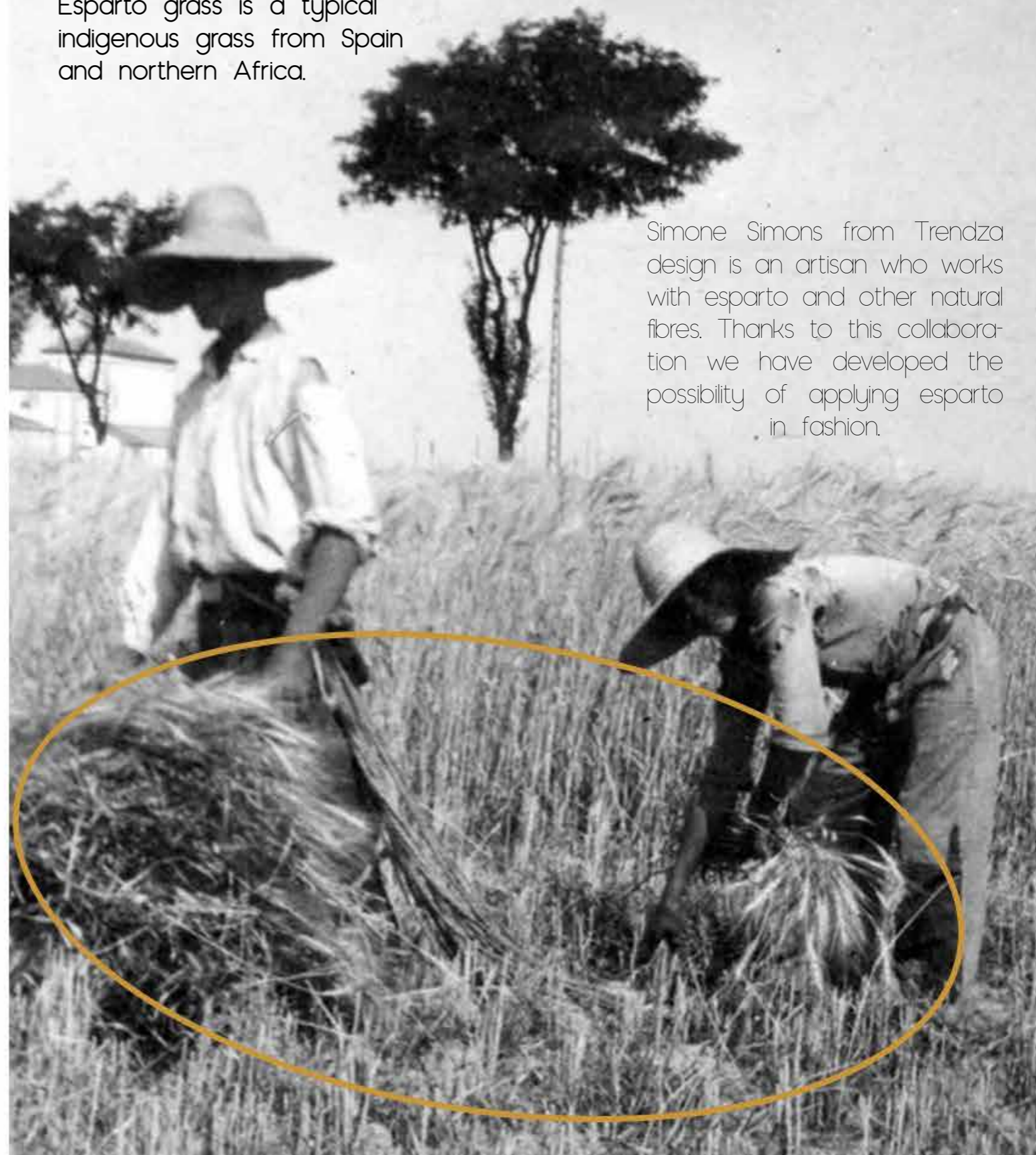
Esparto & fashion



Collaboration

Material Innovation

Esparto grass is a typical indigenous grass from Spain and northern Africa.



Simone Simons from Trendza design is an artisan who works with esparto and other natural fibres. Thanks to this collaboration we have developed the possibility of applying esparto in fashion.

Fabrics

Final fabric choices

This collection aims to be created in the most sustainable way possible. It is the result of the research of the fibres most used in Valencia during the 19th Century and the sustainable materials used today. These are the fabrics chosen together.

It has been taken into account that the chosen materials maintain the volume or, on the contrary, that the volume is contained in the use of fabrics with more drape.

Leather

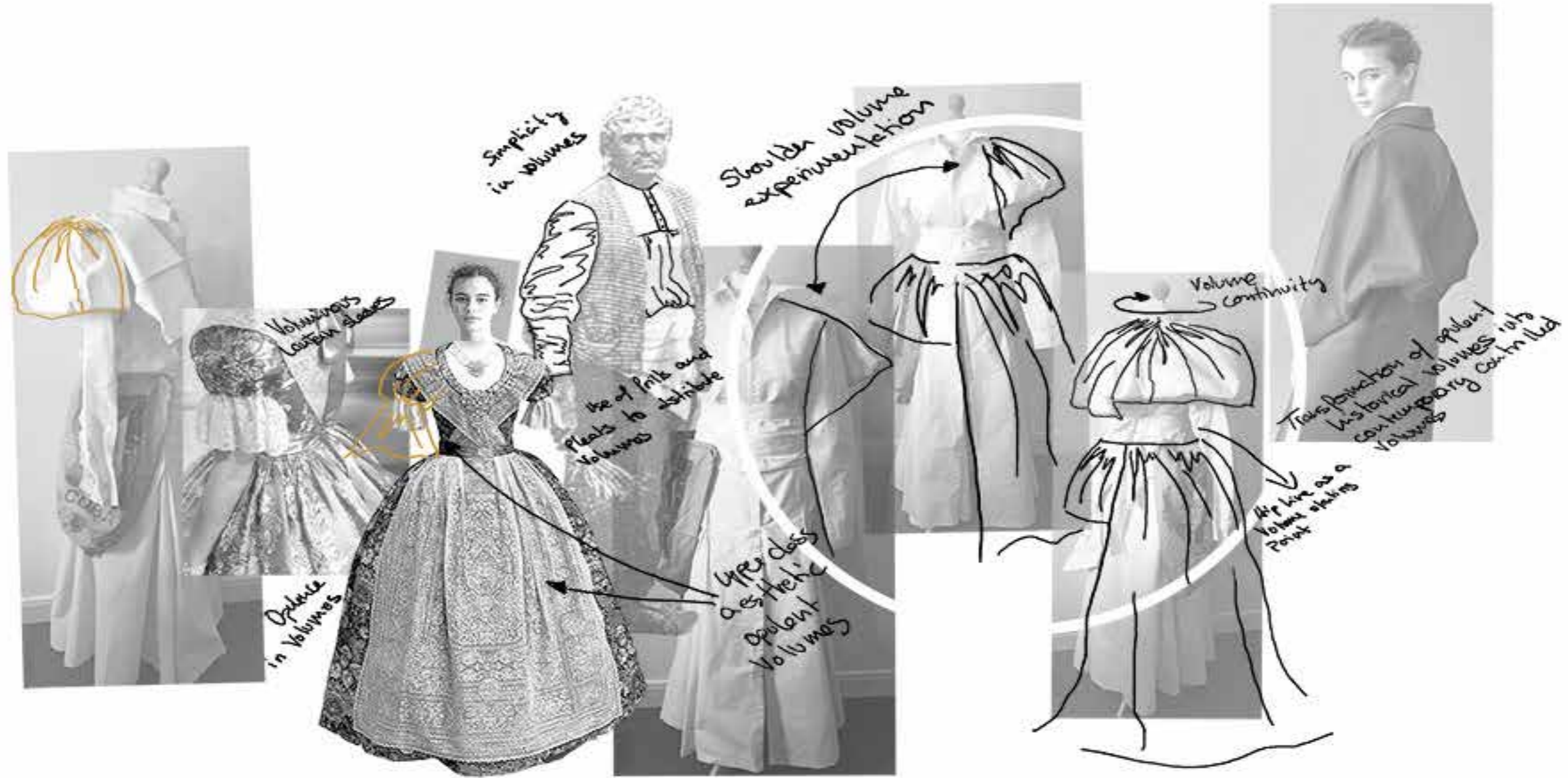
Esparto

Silk

Wool



Silhouette

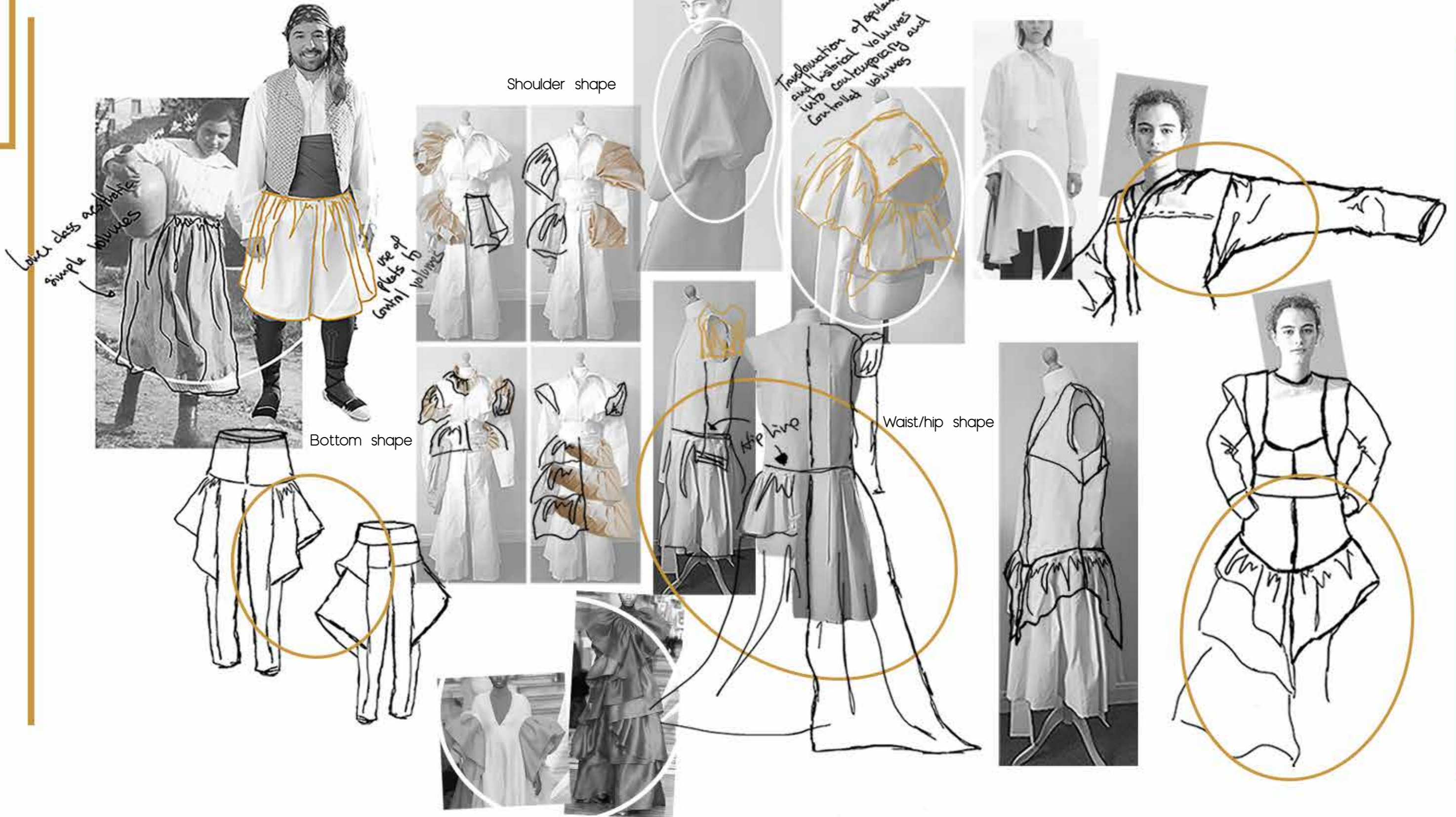


Opulence Exploration

Exploring the opulence from Valencian upper & lower class. Big shapes are mixed with the simple oversized garments used to develop fields jobs.

Shape Evolution

Transformation of opulent and exaggerated shapes into elegant and controlled shapes.



Connecting Architecture & Esparto

Fabric manipulation

Esparto fibres are manipulated creating different shapes. In this case the experimentation aims to connect with architectural design.

The architectural research of the palm tree room is connected to the esparto manipulation that is to be applied in my collection.

Weaving Esparto



Turning Historical into Contemporary

Connections

Tailoring

Historical volume and silhouettes are re-converted into a new version. The compression of opulent volume creates new silhouettes. Oversized garments are converted to become contemporary and comfortable.





Architectural esparto

Esparto manipulation

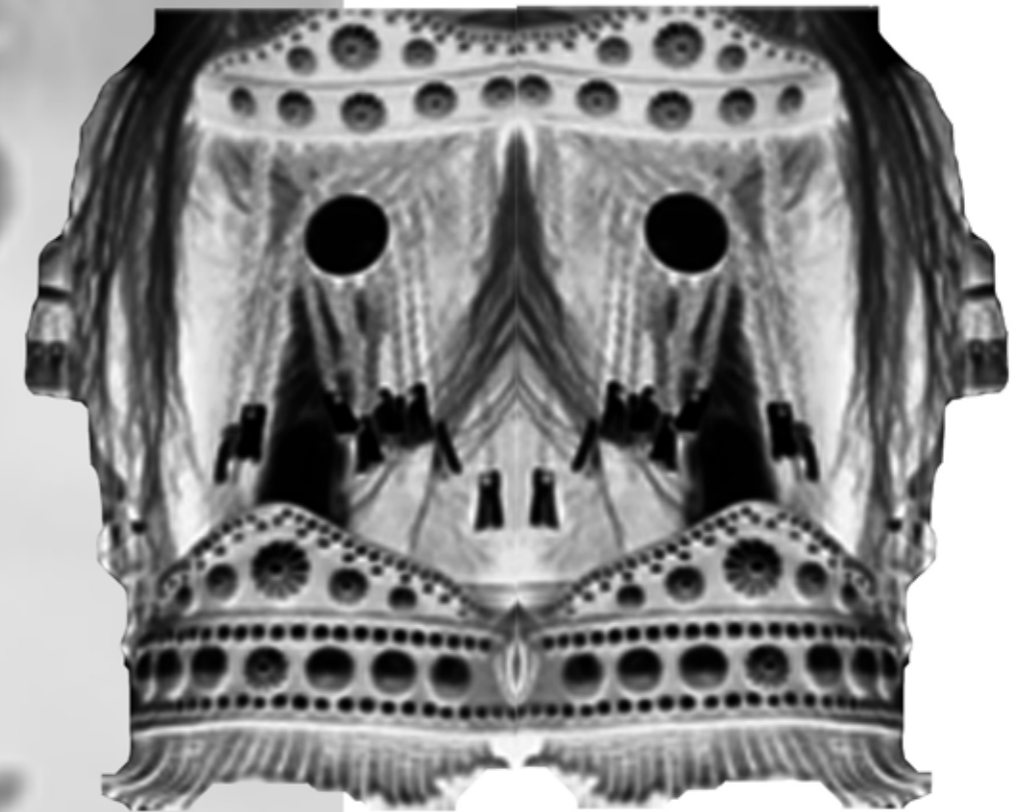
The manipulation of the esparto fibres is inspired by architecture. These flexible fibres are joined and woven into patterns. Having the palm tree shapes in mind, I developed a pleasing and consistent pattern that joined together in a repetitive way to create a mosaic view. These fibres are manipulated and braided by hand and handsewn to achieve this beautiful pattern.



Historical horses

Finishings and fastenings are inspired by historical tools used by horses to work on the fields. Top-stitched leather was used to create big and resistant straps. The use of metal buttons represents the metallic embellishments used to decorate horse's headstalls. Big and resistant esparto ropes were the only option in those days. Handmade belts symbolise those ropes.

Trims & finishings inspiration



Manufacture

Esparto application

Use of esparto fibre as a fabric

Once the esparto panels were ready, they had to be inserted into the garment. These panels are flexible but rigid at the same time. It is not easy to handsew into the garment. When I needed to join two of the esparto panels together it was even more difficult, the rigidity of these fibres makes the job more laborious and complicated.



Manufacture

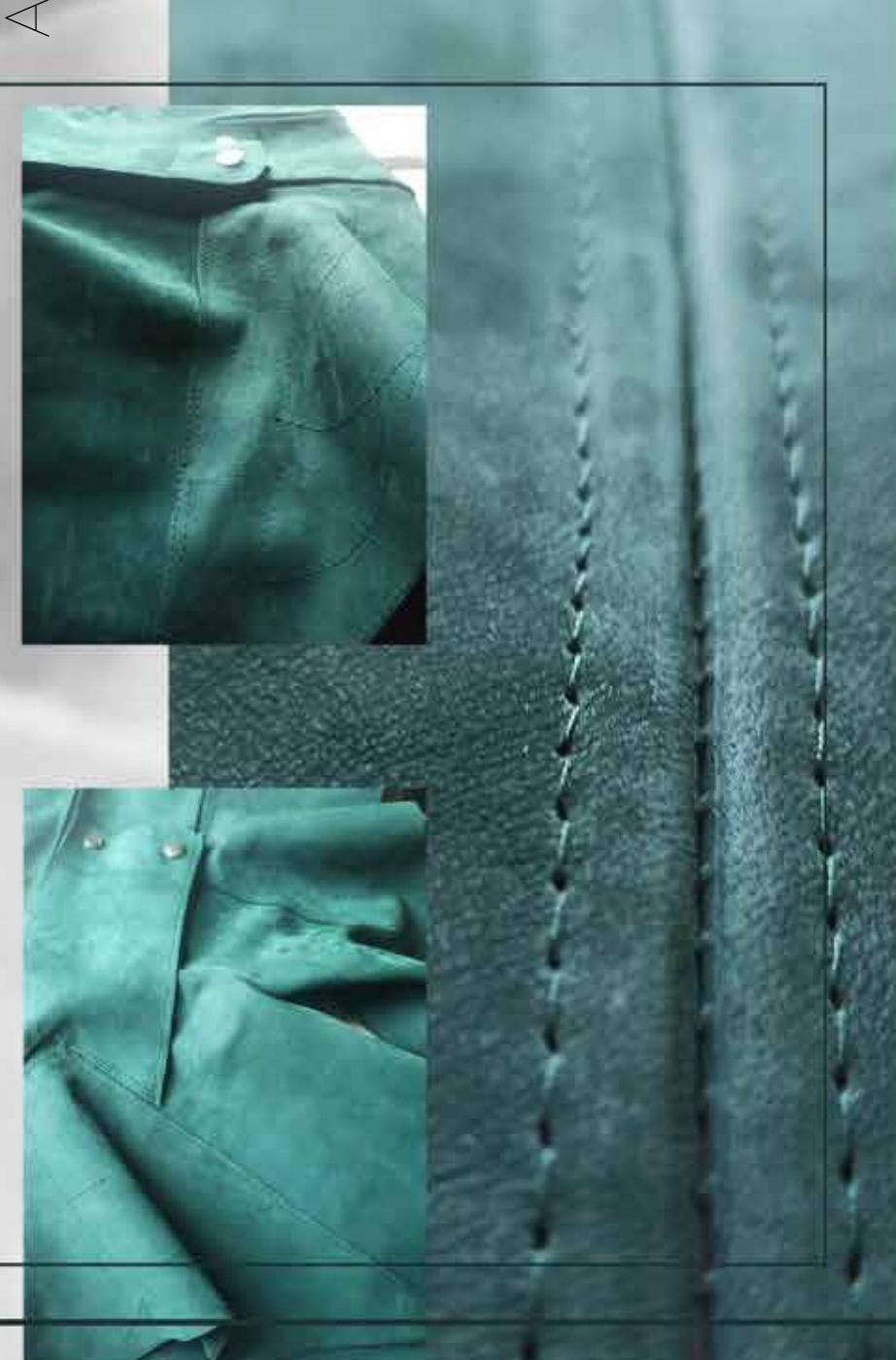
Leather

Application Rhubarb leather



To work with this leather was as laborious as normal leather. It has the same characteristics and I followed the same processes. Some of the leather panels are topstitched and I worked the wrong side of the leather to make it look and feel as polished as the right side. It has been sanded down and painted to get a good finish. The edges are also painted and topstitched to achieve high end finishings.

The use of topstitch as an embellishment creates a pattern that make the leather stand out.

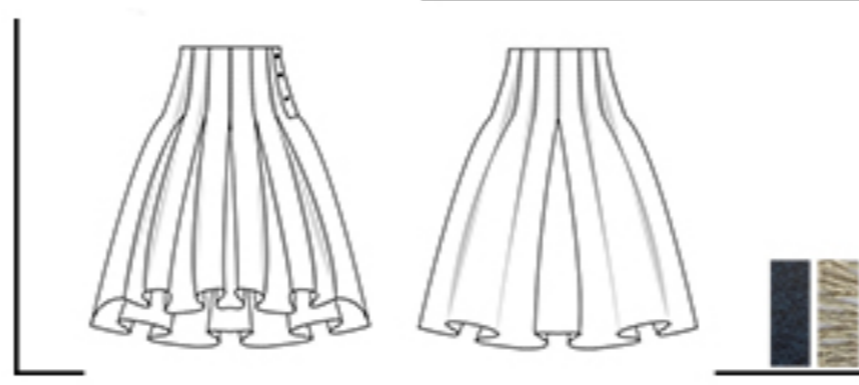
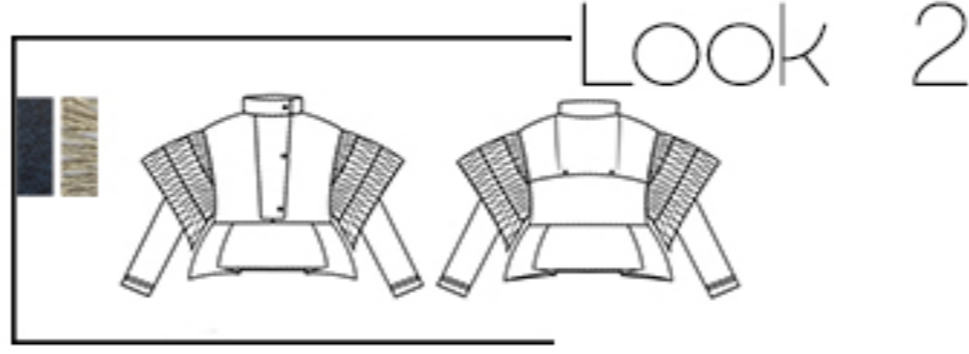
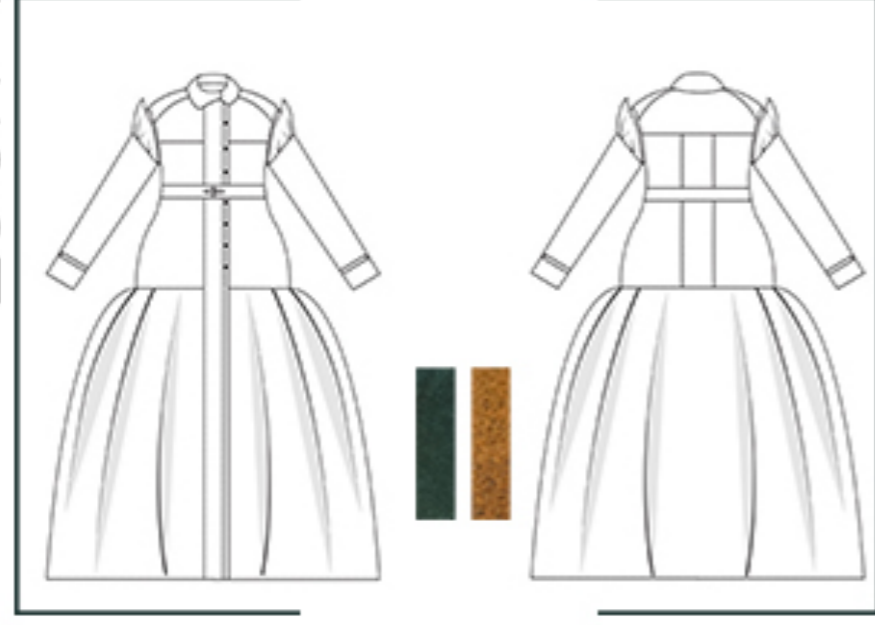


'Slow Down'

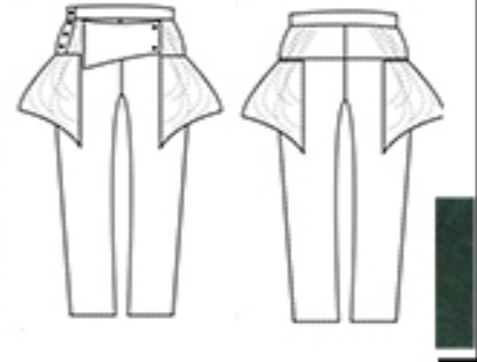
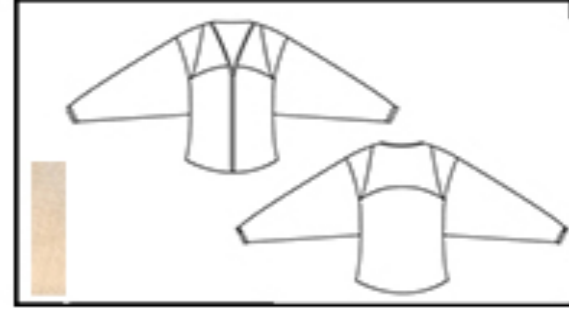


Range Plan

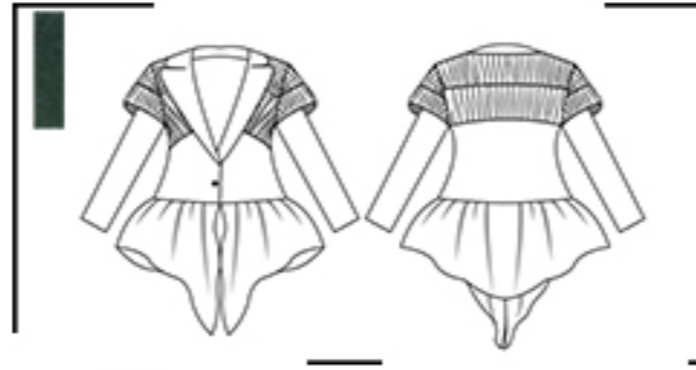
LOOK 1



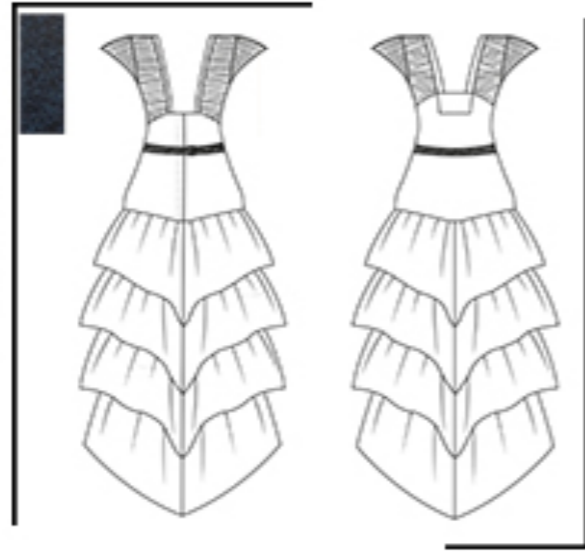
LOOK 3



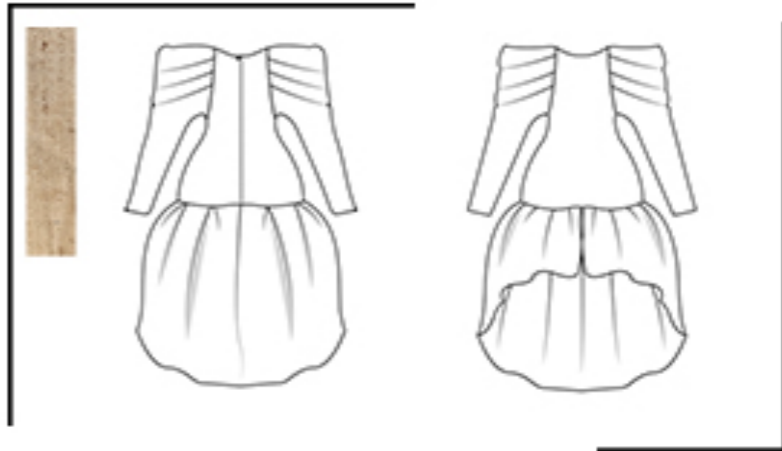
LOOK 5



LOOK 4



LOOK 6



Slow Down Collection



LOOK |



Look 2



'Slow Down' Collection



Slow Down Collection



Slow Down Collection



LOOK 4

