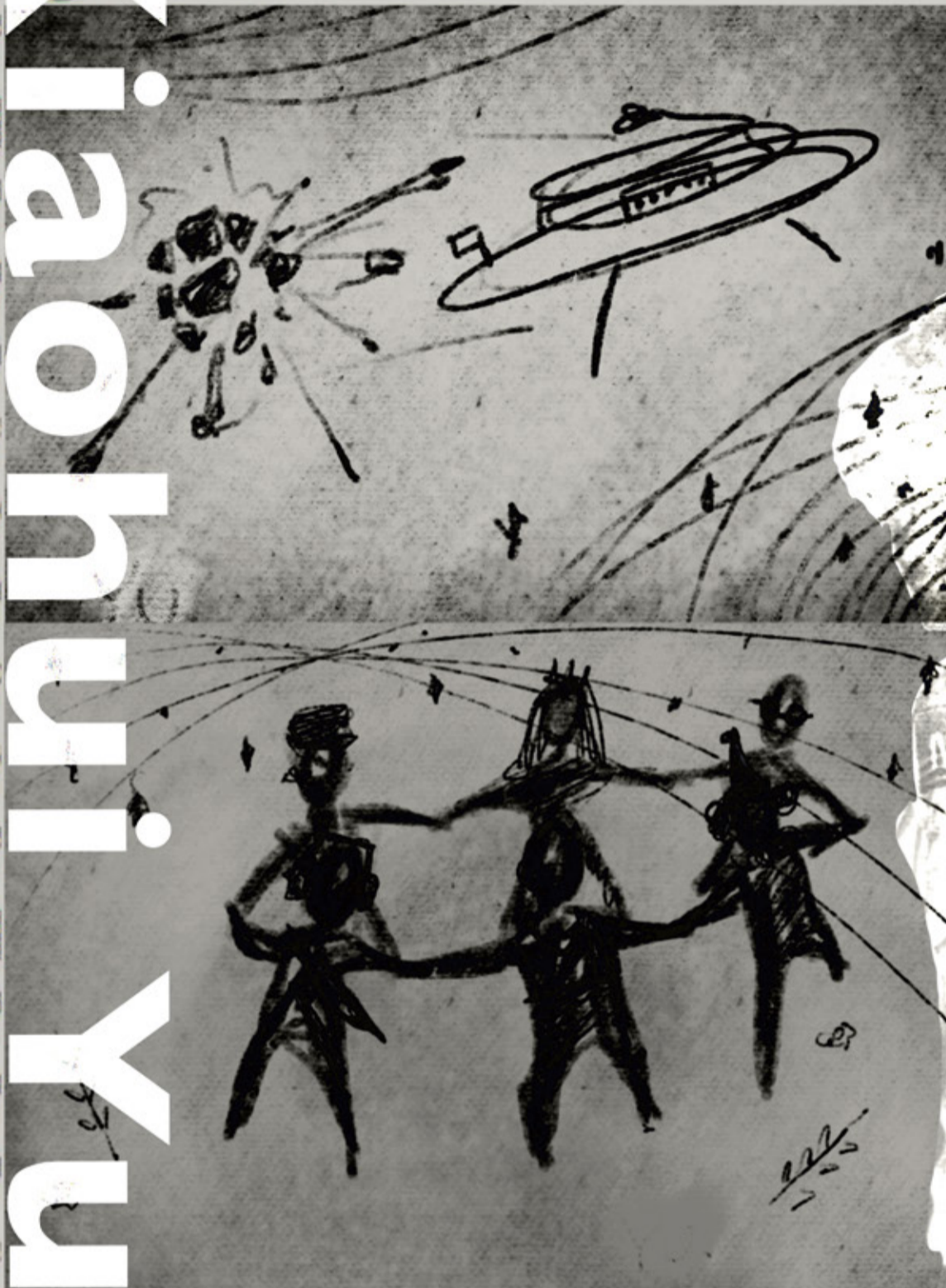


i can't go back there
i can't go back there
i can't go back there
i can't go back there
i can't go back there

ricki montgomery



i can't go back there
i can't go back there
i can't go back there
i can't go back there
i can't go back there
i can't go back there
i can't go back there
i can't go back there
i can't go back there
i can't go back there
i can't go back there
i can't go back there
i can't go back there
i can't go back there
i can't go back there
i can't go back there
i can't go back there

**HOME
SWEET
HOME**

Xiaohui Yu
"HOME SWEET HOME"
Graduate Collection
AW 2022

PROJECT I

Research Response



ICONCEPT

Statement:

i've been reading the DECAMERON during quarantine, this backstory of a group of young people fleeing an outbreak far from the city resonated with me strongly. As a SCI-FI fan, I love to see anything related to the HUMANITY CYBERPUNK and DYSTOPIAN future. I deeply inspired by films and books such as *snow piercer*, *a space odyssey*, *interstellar* and *stars wars...*

The setting of my collection is about a group of people from different social classes who are tired of their life in earth and want to get away from everything every rules there. So they escaped from the Earth in a space ship and drifting in the galaxy looking for a new destination for building a brand new home. Now they're having a party celebrating a beginning of a new era.

“Bereishit”



Wars, Pandemics,
Disparities
between rich and
poor, Unequal
rights, Waste of
resources... The
world is CHAOS.
People don't need
to waiting for a
savior, we need to
use our own
power to build a
new order.

Be your own Savior





RESEARCH

In the movie **Snow Piercer**, people were sent to different carriages because of their social status. I am inspired by this setting. Our society is full of people with **all kinds of identities**, and I wanted it to be a diverse group on this spacecraft. Instead of killing each other like in the film, together they are working on the same goal: **building a new home.**

Character identities: Who is on this ship?

Passenger list

- 01. Captain
- 02. Pilot
- 03. Artist
- 04. Debutante
- 05. Tramp
- 06. ...

Ticket To Anywhere

/RESEARCH

Lingerie & Pilot Suit

As a female, I feel that society has placed too much pressure and responsibility on women. In the past, women needed to wear corsets to maintain a slim figure, and also to wear flight suits to fight for their homeland. Women have always been brave and passionate.

LACING is an element of both the corsets and pilot suits, is a symbol of feminine power.

I will combine the constructions and elements of **LINGERIE** and **PILOT SUITS** to create new-age women's look.



Women as Soldiers
The first military uniform for women was the flight suit. The flight suit was designed to be a simple, functional garment that could be worn over a corset. The flight suit was made of a heavy, durable fabric and had a high collar and long sleeves. It was designed to provide protection and support for the pilot. The flight suit was also designed to be easy to put on and take off. The flight suit was a symbol of feminine power and bravery.





Princess Leia from Star Wars

/RESEARCH

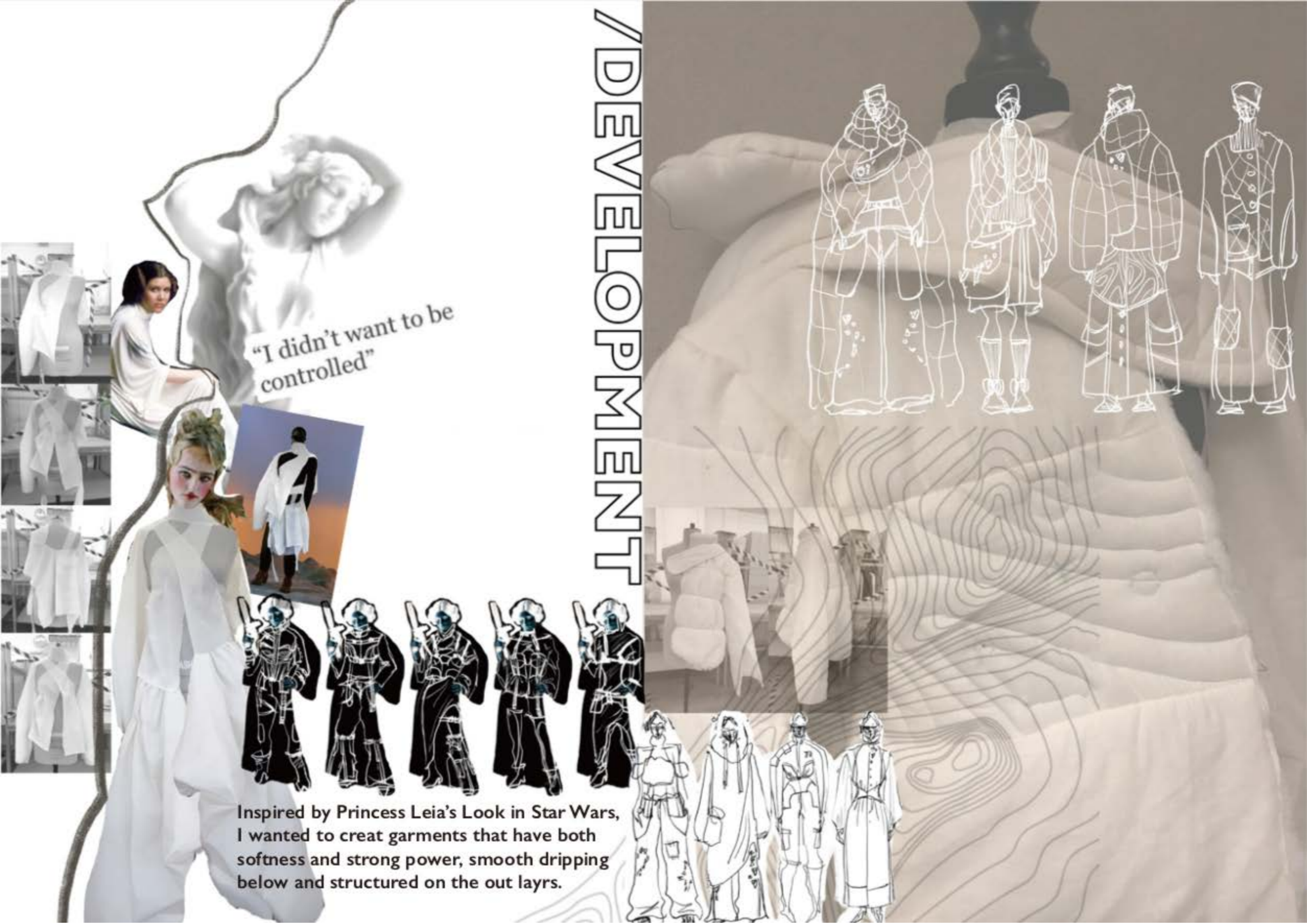
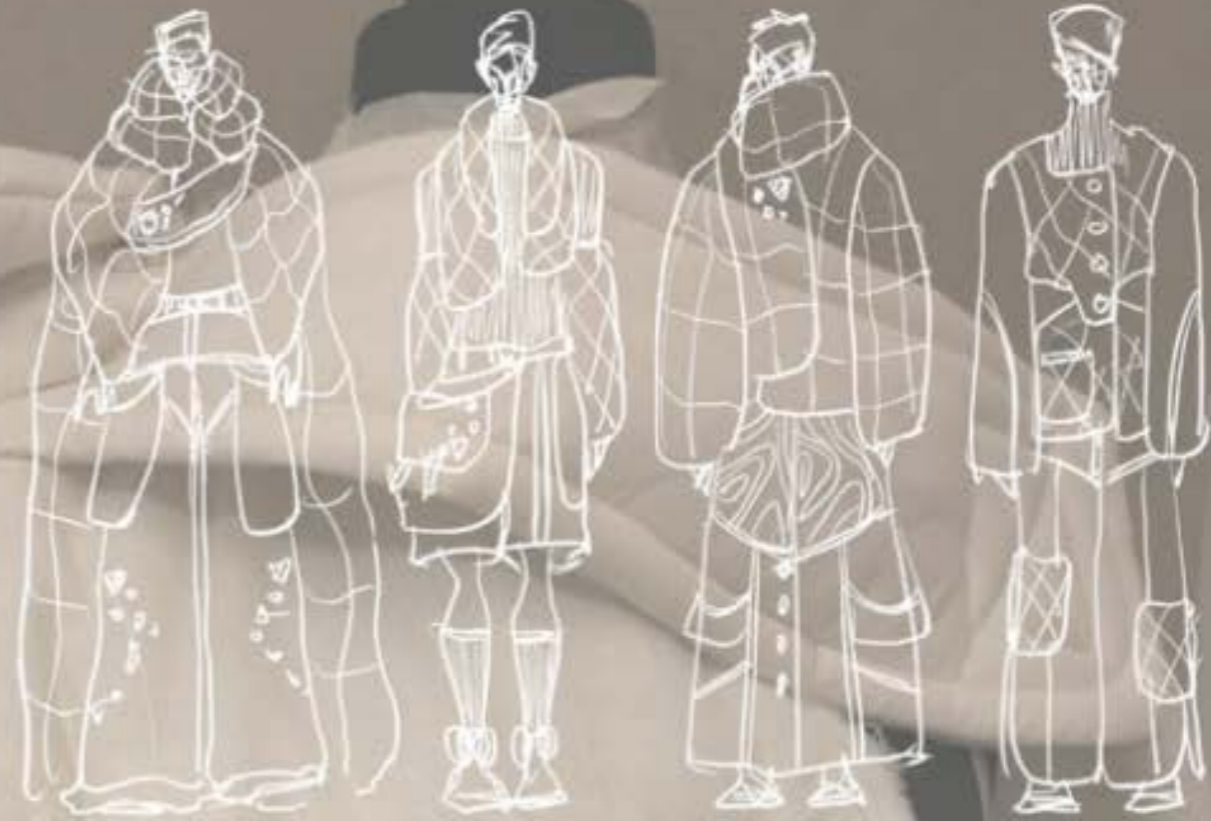
Space Suit

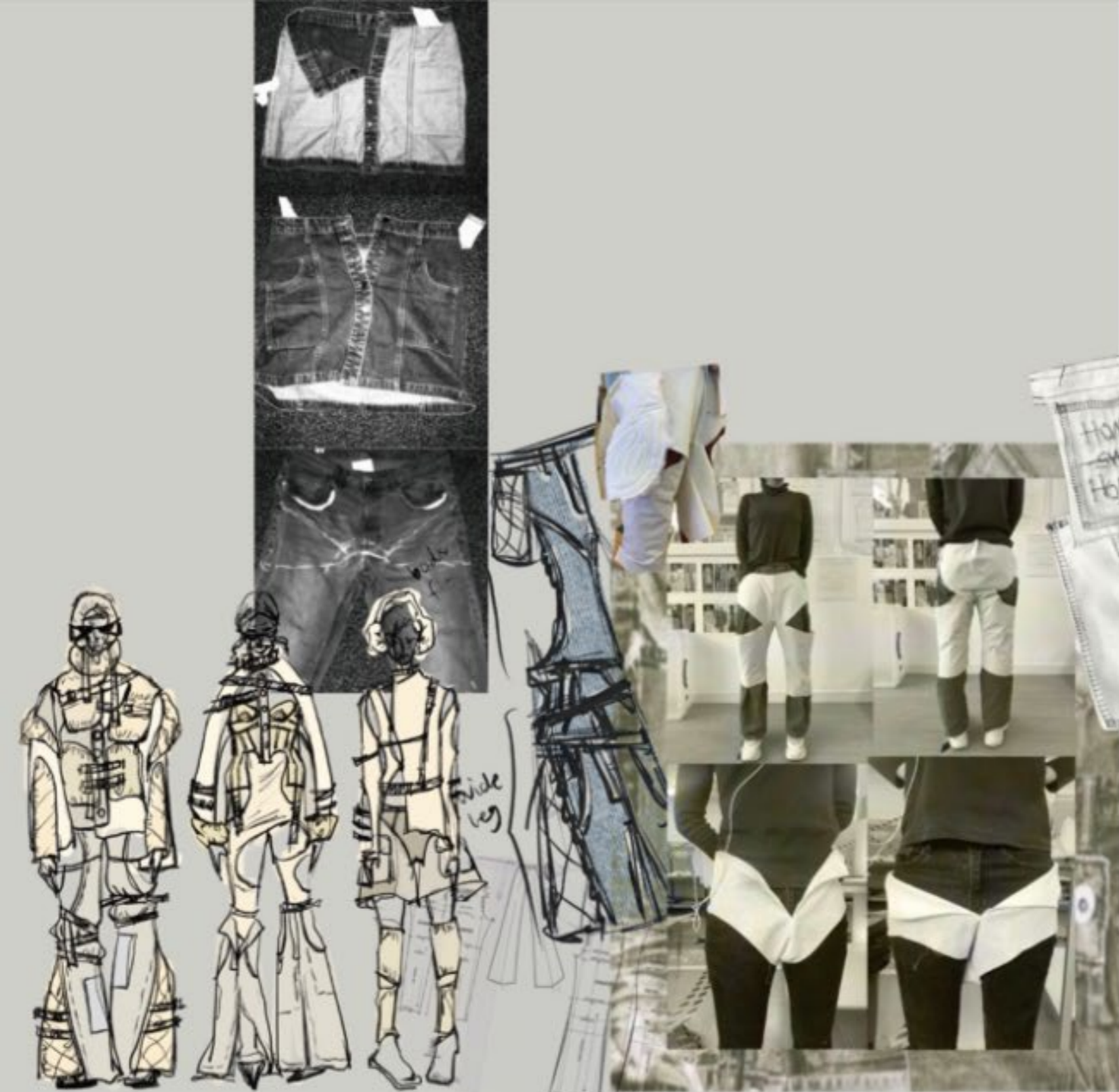
/DEVELOPMENT

"I didn't want to be controlled"



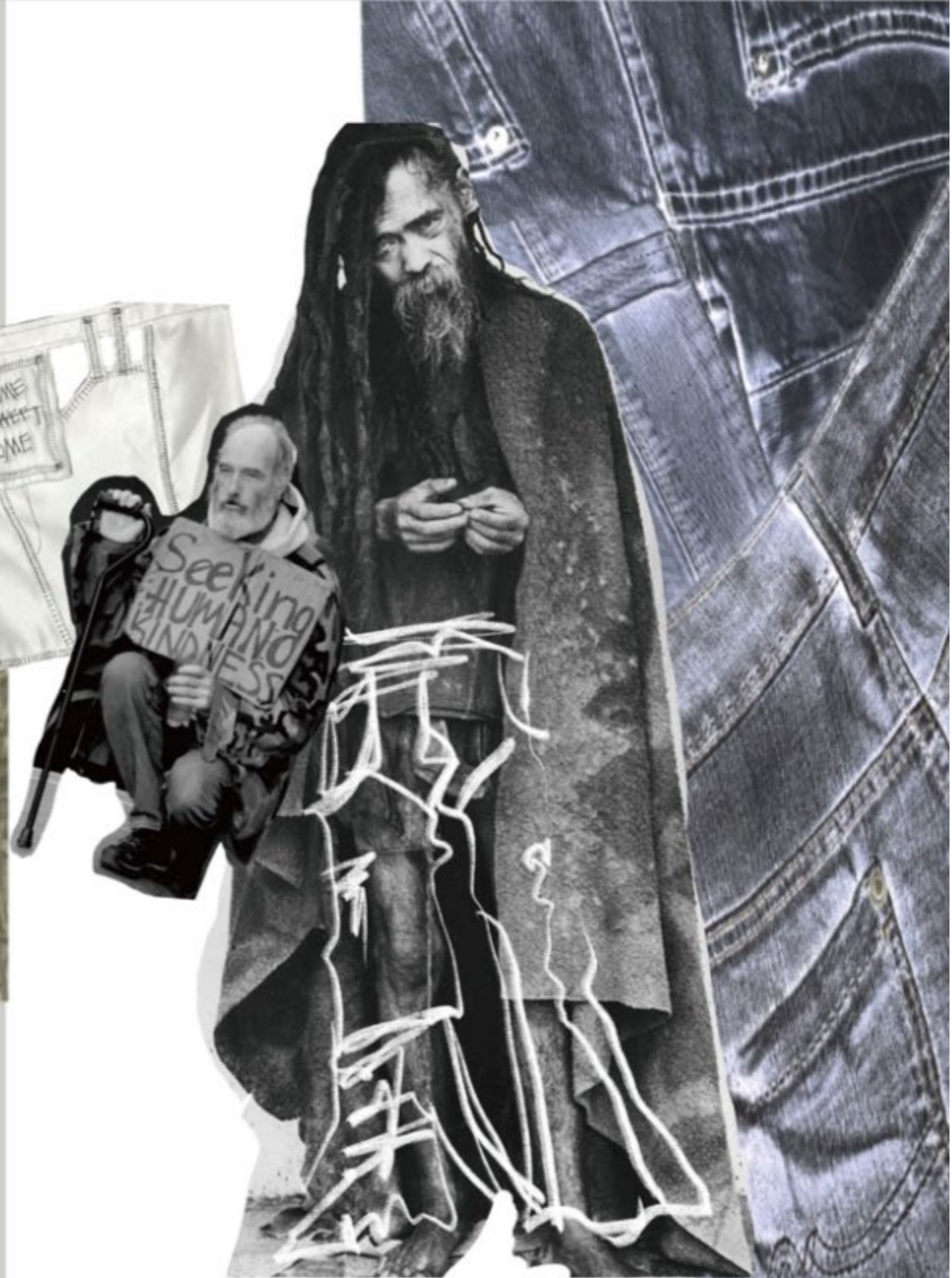
Inspired by Princess Leia's Look in Star Wars, I wanted to create garments that have both softness and strong power, smooth dripping below and structured on the out layers.





/DEVELOPMENT

For the *TRAMP* character, I got inspired from the patch works on homeless people's clothes. They put all kinds fabric together to make themselves feel protected and warm. I used deconstruction to design the tramp look and played around with the pattern. I applied jeans seam detail to on fabric to create the streetwear feeling.





PROJECT 2

Connect





Textile Development: Top Stitches on Wadding



/DEVELOPMENT

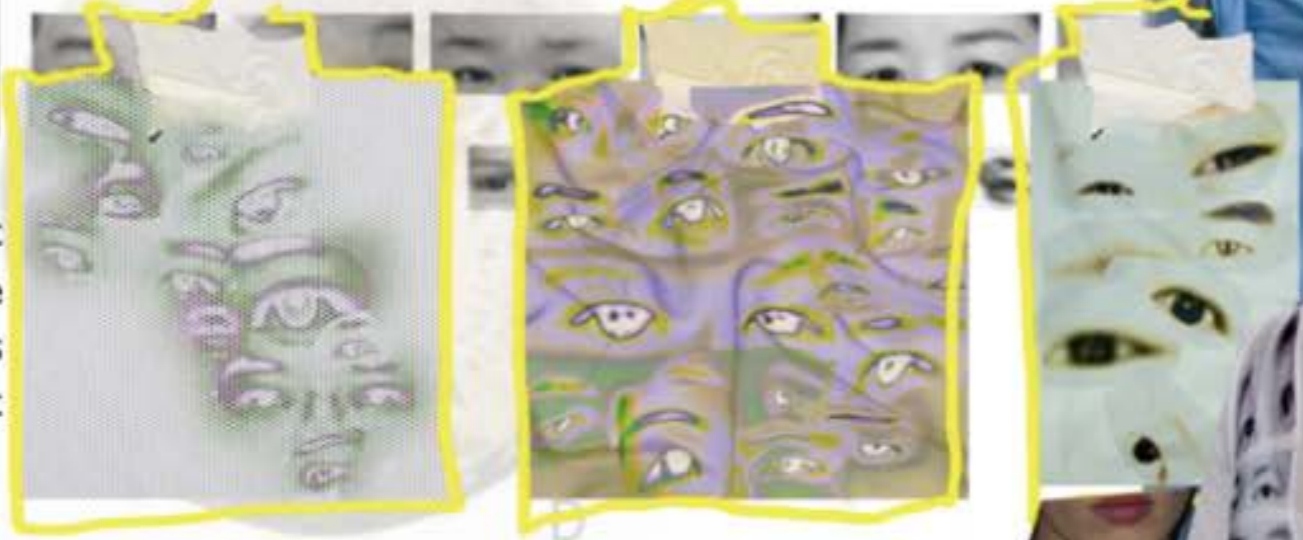
Inspired by David Bowie's ICONIC look, I sew various curved lines on the fabric to simulate the look of the geographic map.



/DEVELOPMENT



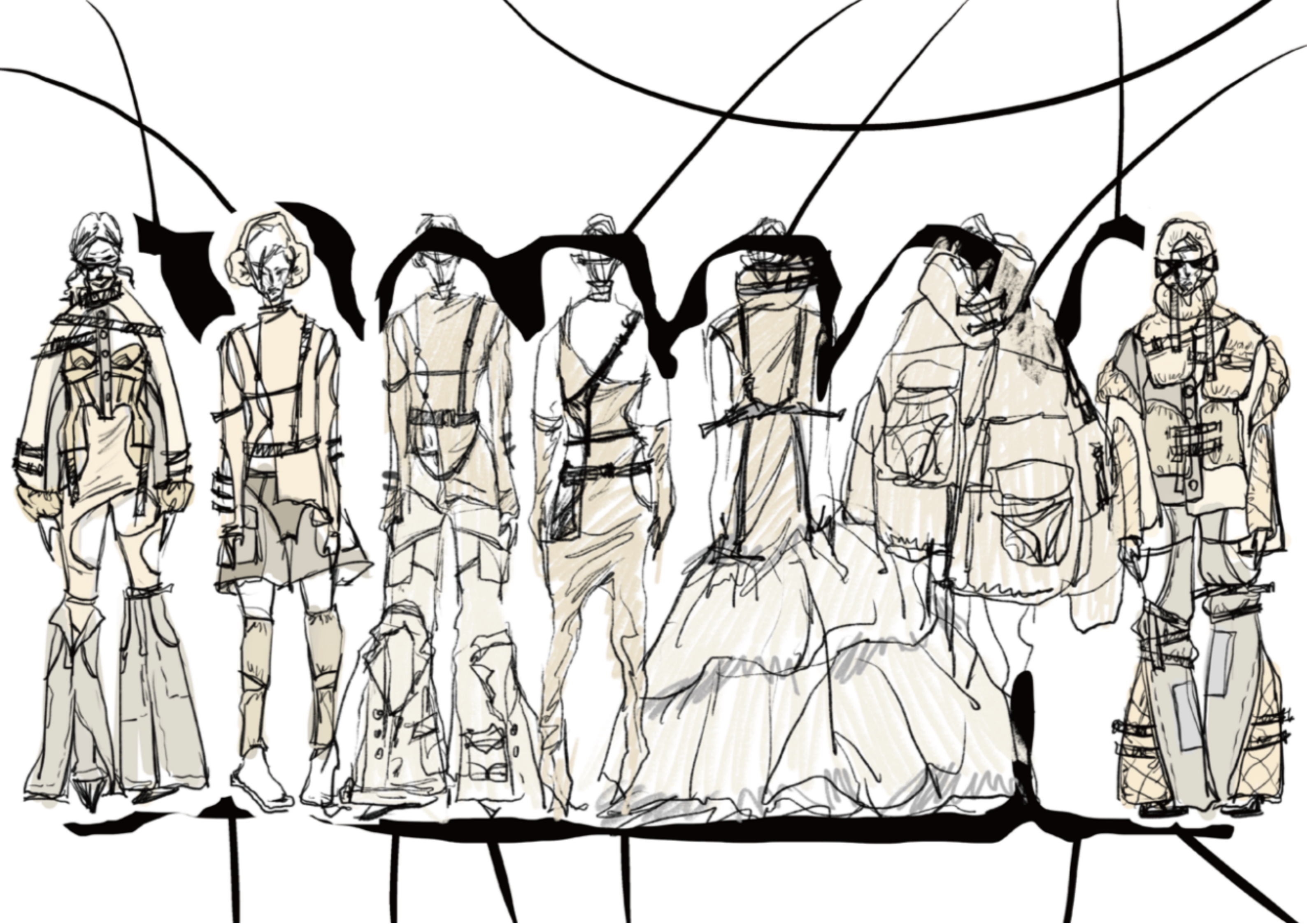
When people wear masks, their eyes become the first impression to others, we can sense the universe through our eyes. I gathered human eyes' pictures from my friends and family, they all from different ages, gender and identities.



Print Design

“In your eyes, I see the way home.”







PROJECT 3

Refine-Resolve



DEVELOPMENT



The Debutante's Dress



/DEVELOPMENT



Cord Details

Pilot Jacket



'Artist' Look Prototype

prototype -

DEVELOPMENT

When looking for a new destination, you can't lack a map. The shape of the urban river distribution on the map is like the blood vessels in the human body. I searched the map poster prints and put them in different positions on the body to deconstruct this dress.



/DEVELOPMENT

'Artist' look prototype



The overall fluent drip silhouette of the 'Artist' look was inspired by princess Leia's costume in Star War. The detail of cord technique was created to show the lines of the maps.



'Artist' look

/REFINE

The refine version added lacing details on the back and extends the bottom of the skirt to the ground made it look more fluent. I also added a sleeve on the side to balance this asymmetric dress.



The 'Pilot' Look

REFINE



Under garment





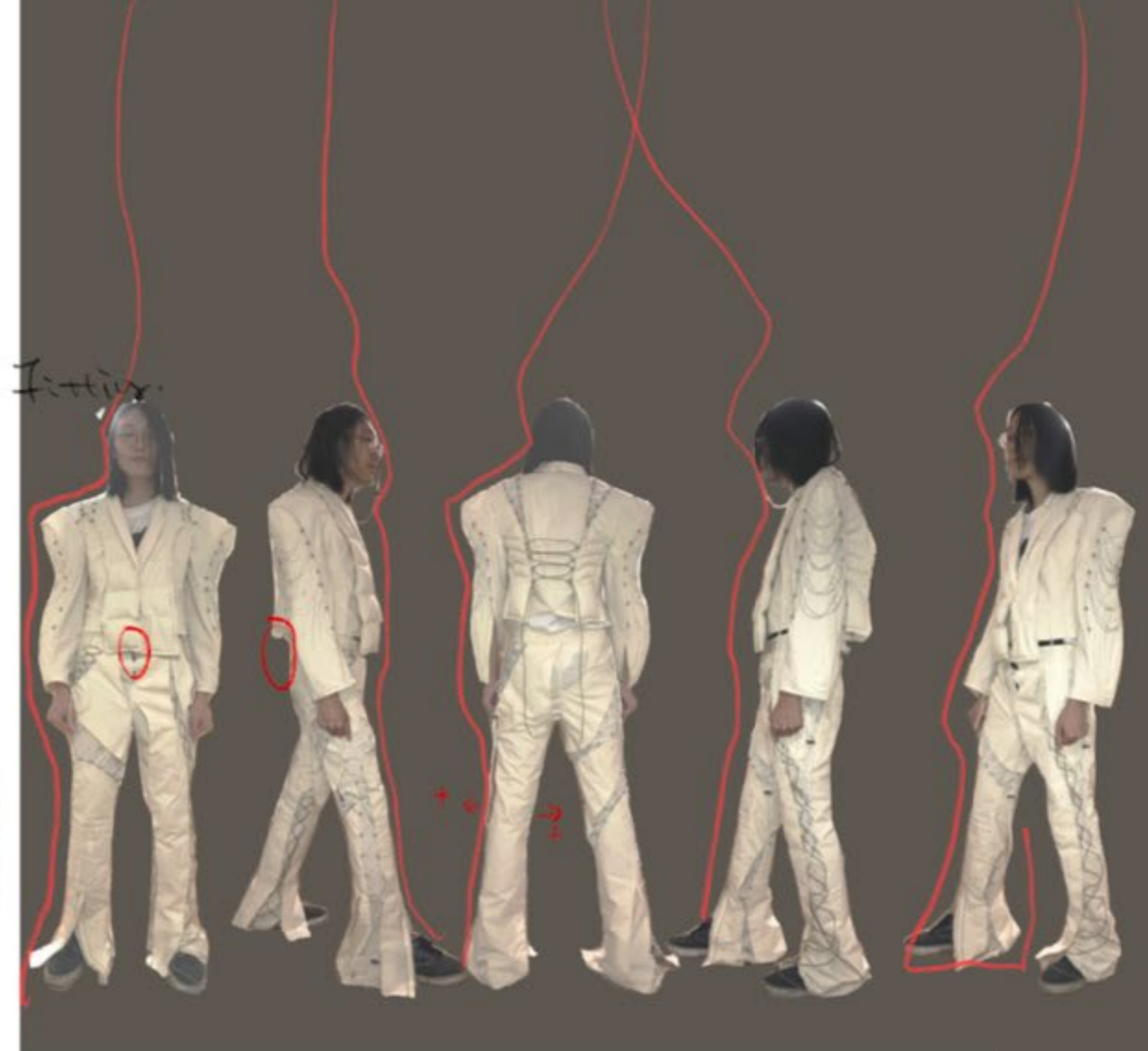
dyeing the knit fabric

/DEVELOPMENT

**The 'Pilot' Look
Undergarment**



/REFINE



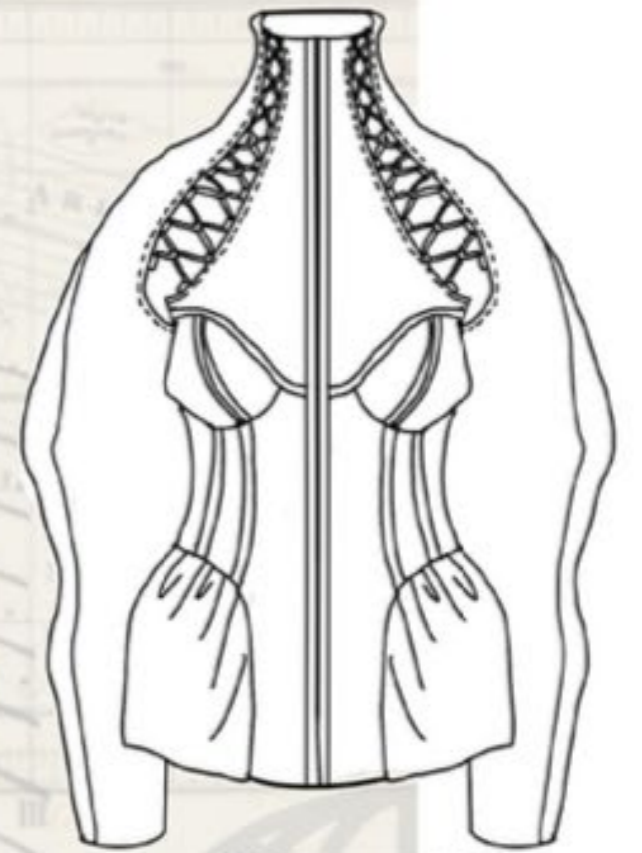
This look combined with Captian blazer and Tramp trousers, I cut the last blazer prototype short to show the lacing details of the trousers. Top stitched wadding was used on the part of body and sleeves to create volume.

LINE-UP



/RANGEE PLAN





HOME

SWEET

HOME

AW 2022
Look Book







Look One
Design: Xiaohui Yu
Makeup: Xiaohui Yu
Photography: Xiaohui Yu
Model: Isla Gavan McHarg
Assistant: Cayley Cochrane
Niamh Charlotte





Look Two
Design: Xiaohui Yu
Makeup: Cayley Cochrane
Photography: Xiaohui Yu
Model: Max Walker
Assistant: Cayley Cochrane
Niamh Charlotte





Look Three
Design: Xiaohui Yu
Photography: Xiaohui Yu
Model: Max Walker
Isla Gavan McHarg
Assistant: Cayley Cochrane
Niamh Charlotte







Look Four
Design: Xiaohui Yu
Photography: Xiaohui Yu
Model: Isla Gavan McHarg
Assistant: Cayley Cochrane
Niamh Charlotte