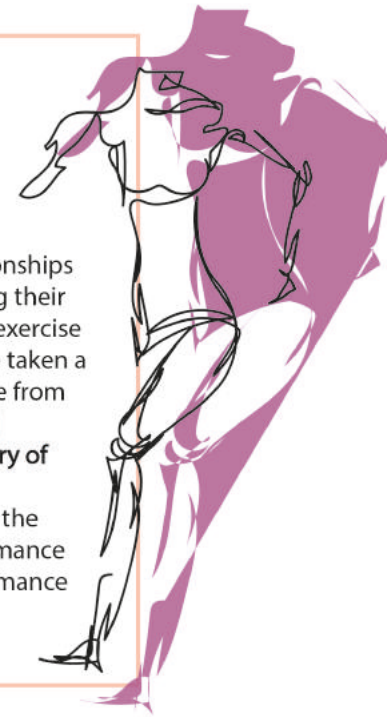


ANTALYA TODD
Manchester Fashion Institute
Manchester Metropolitan University

Due to the COVID-19 pandemic, people have lost access to places and relationships that provide an escape for them from the everyday. This has led to embracing their natural surroundings and discovering, or potentially rediscovering, forms of exercise that do not rely on public facilities, such as running. For this collection, I have taken a personal approach to the concept of escapism and using running as a release from uncontrollable events during the pandemic. **My final collection is a technical women's running wear collection that has been visually influenced by imagery of mountains and parachutes.**

My development process has been practice based, taking into consideration the capabilities of technical outerwear and stretch fabrications, as well as performance silhouettes. The garments have been designed with functionality and performance at the core, and have a 'studio to street' aesthetic for versatility.



WOMEN'S "ALL WEATHER" RUNNINGWEAR



ALTITUDE

ESCAPISM
noun

the tendency to seek distraction and relief from unpleasant realities, especially by seeking entertainment or engaging in fantasy.



6:30 AM
WAKE-UP

6:45 AM
PRE- BREAKFAST, USUALLY
SOMETHING SMALL THAT
WILL FUEL ME WITHOUT
MAKING ME FEEL FULL

7:00 AM
CATCH UP ON WORK
EMAILS, SET MYSELF TASKS
FOR THE DAY AHEAD

7:30 AM
RUN. SET OFF. I
NEVER PLAN MY ROUTE, I
DONT PLAN MY DISTANCE.
I DONT EVEN CHECK THE
WEATHER. **I JUST RUN**

I RUN UNTIL MY MIND
CLEARS OF THE CHAOS OF
THE PANDEMIC.

8:30 AM
BREAKFAST

9:00 AM
I AM READY TO CONQUER
THE DAY



technically innovative,
aesthetically beautiful.



COLOUR & FABRICATION
FABRICS FOR MULTI-SEASON RUNNING.
SOURCED FOR THEIR TECHNICAL PROPERTIES AND HIGH LEVEL OF DURABILITY

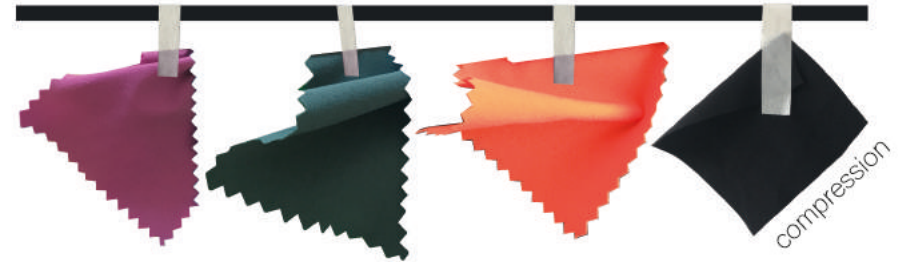
WATER-PROOF



SHOWER-PROOF



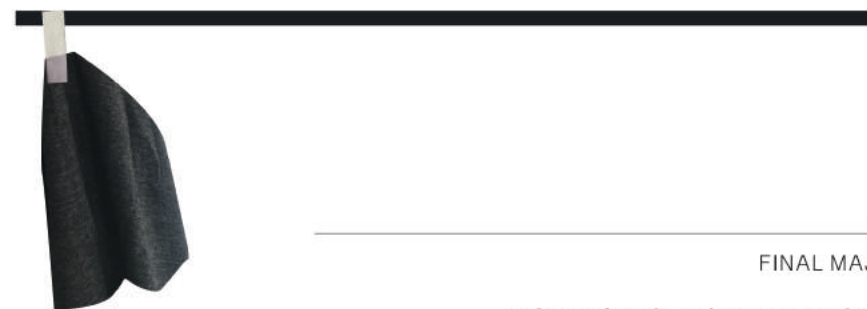
LIGHT-WEIGHT STRETCH



LIGHT-WEIGHT BREATHABLE



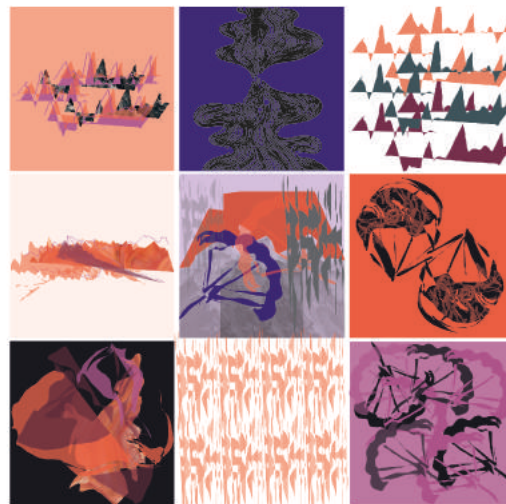
SUPERFINE MERINO WOOL (PIECE DYED AS PER INDIVIDUAL DESIGN)

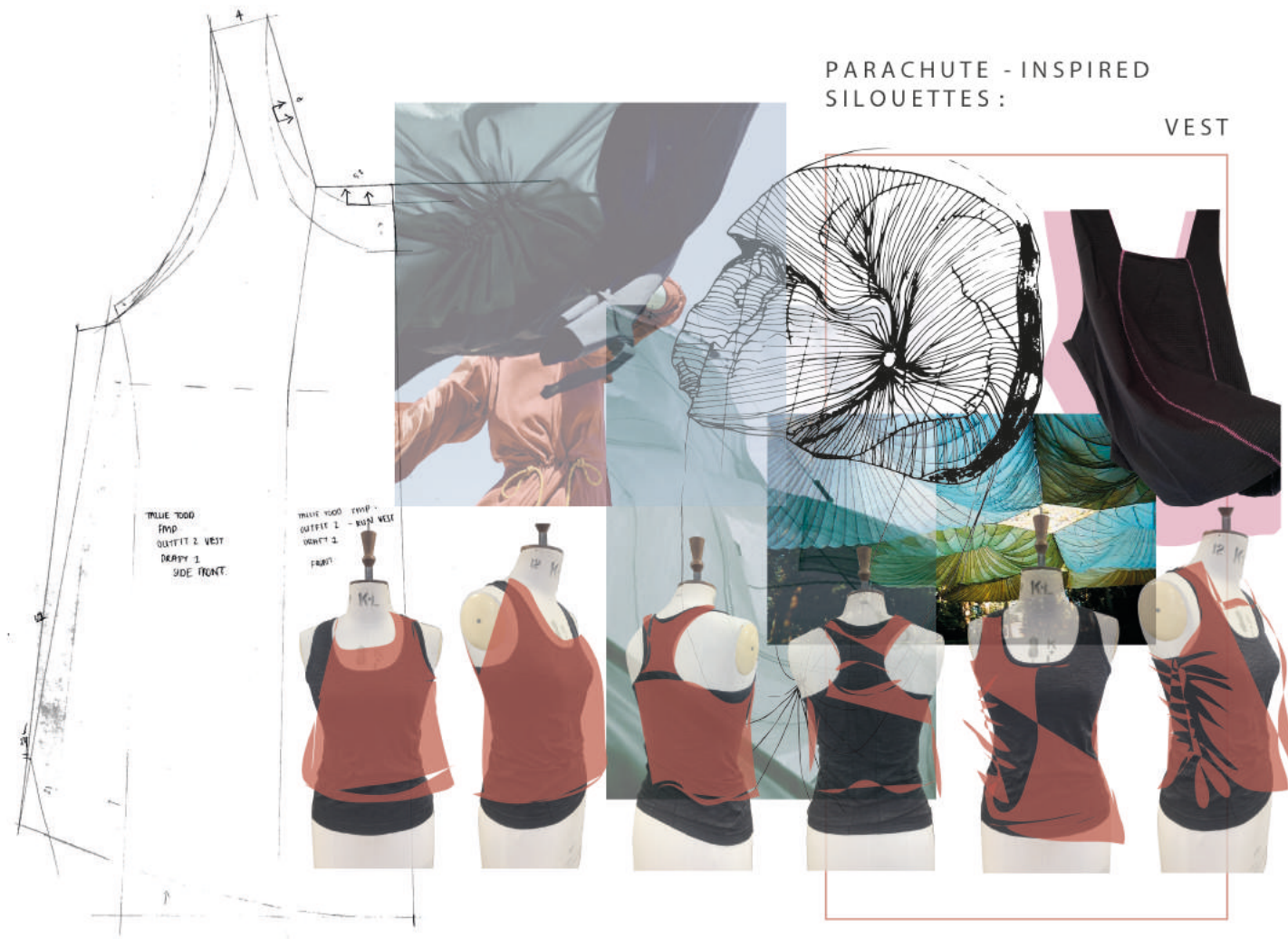


ANTALYA TODD

FINAL MAJOR PROJECT 2021.

WOMEN'S TECHNICAL RUNNINGWEAR COLLECTION,
INSPIRED BY ESCAPISM AND THE NEED FOR VERSATILITY
IN A POST-PANDEMIC WORLD





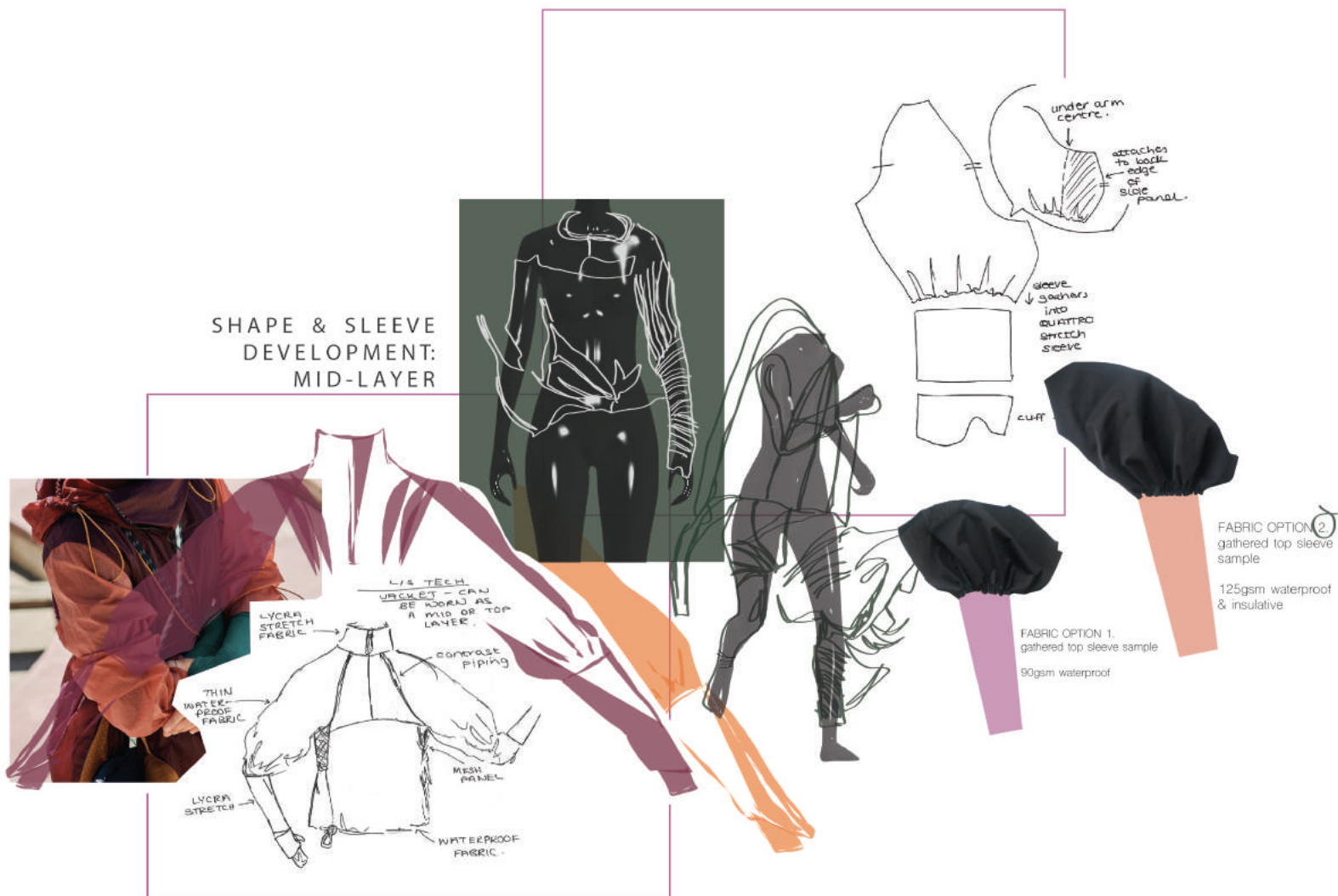
FEMALE RUNNERS - NECESSARY AREAS OF COMPRESSION:

- MUSCLES AROUND KNEES
- QUADS
- GLUTES
- CALVES

FEMALE RUNNERS-NECESSARY
AREAS OF COMPRESSION:

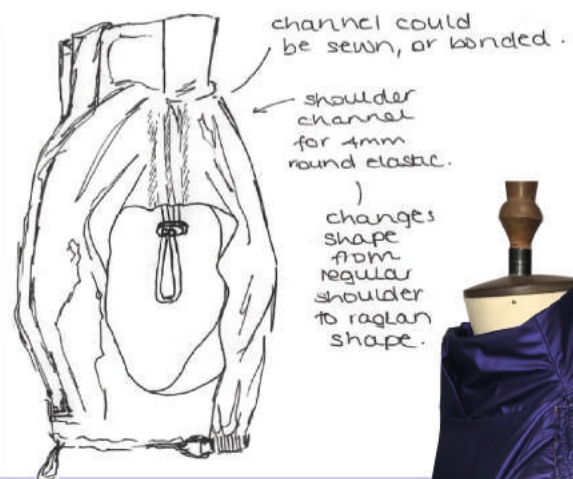
- MUSCLES AROUND KNEES
- QUADS
- GLUTES
- CALVES.

SHAPE & SLEEVE DEVELOPMENT: MID-LAYER





A collage of images showing the development of a garment, likely a corset. It includes a sketch of a corset with lacing, a photograph of a corset bodice with a lace-up closure, a photograph of a corset bodice with a lace-up closure, and a photograph of a corset bodice with a lace-up closure.



'ESCAPE' COLLECTION: WOMEN'S URBAN RUN.

2022 - ALL SEASON CAPSULE COLLECTION



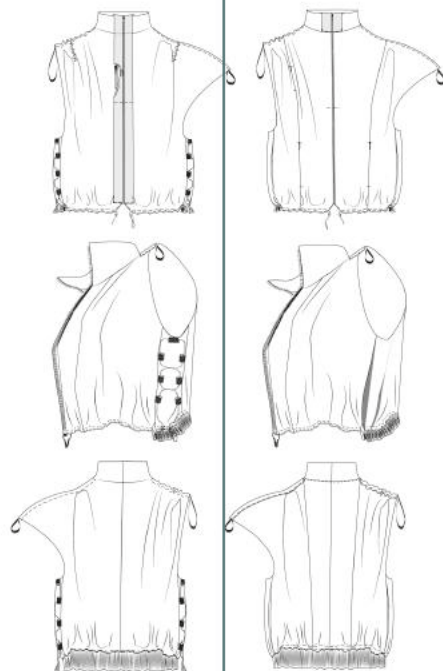
ANTALYA TODD

FINAL MAJOR PROJECT 2021.

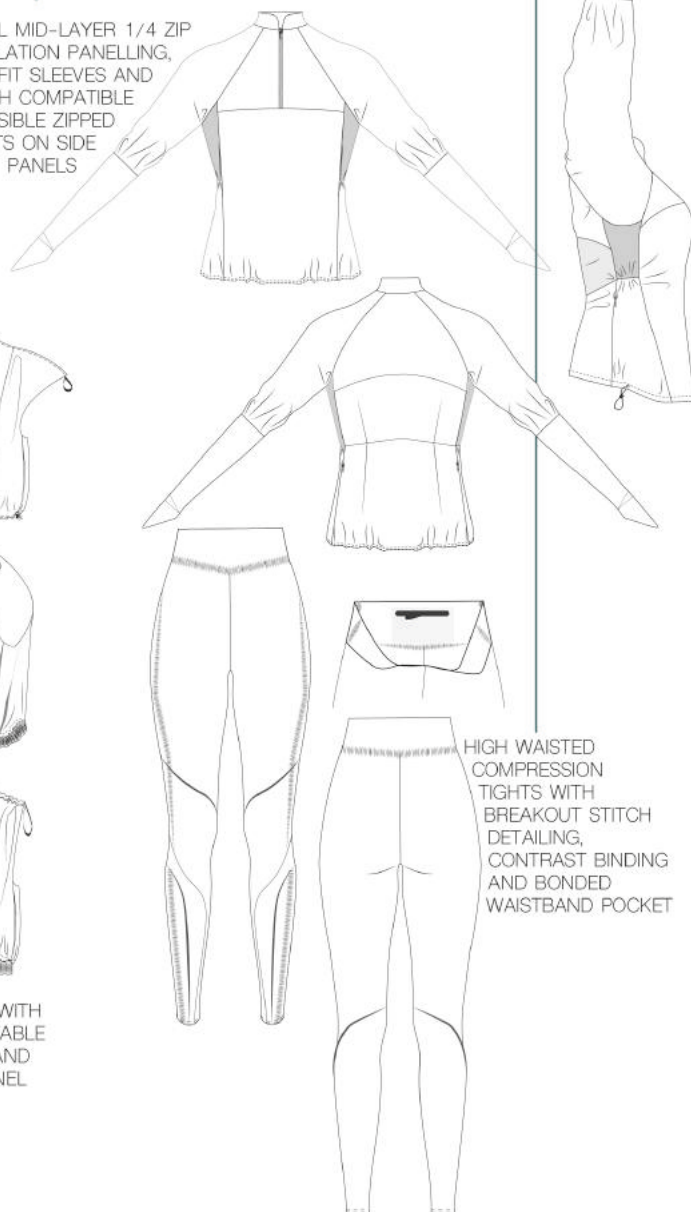
WOMEN'S TECHNICAL RUNNINGWEAR COLLECTION,
INSPIRED BY ESCAPISM AND THE NEED FOR VERSATILITY
IN A POST-PANDEMIC WORLD



TECHNICAL MID-LAYER 1/4 ZIP
WITH VENTILATION PANELLING,
RELAXED FIT SLEEVES AND
SPORTS-WATCH COMPATIBLE
CUFFS. INVISIBLE ZIPPED
POCKETS ON SIDE
PANELS



OEKO-TEX®
STANDARD 100
IRRIDECENT REVERSIBLE GILET WITH
FUNCTIONAL POCKETS, ADJUSTABLE
SHOULDERS AND WAISTBAND AND
PARACHUTE-INSPIRED SIDE PANEL
DETAILING



HIGH WAISTED
COMPRESSION
TIGHTS WITH
BREAKOUT STITCH
DETAILING,
CONTRAST BINDING
AND BONDED
WAISTBAND POCKET



