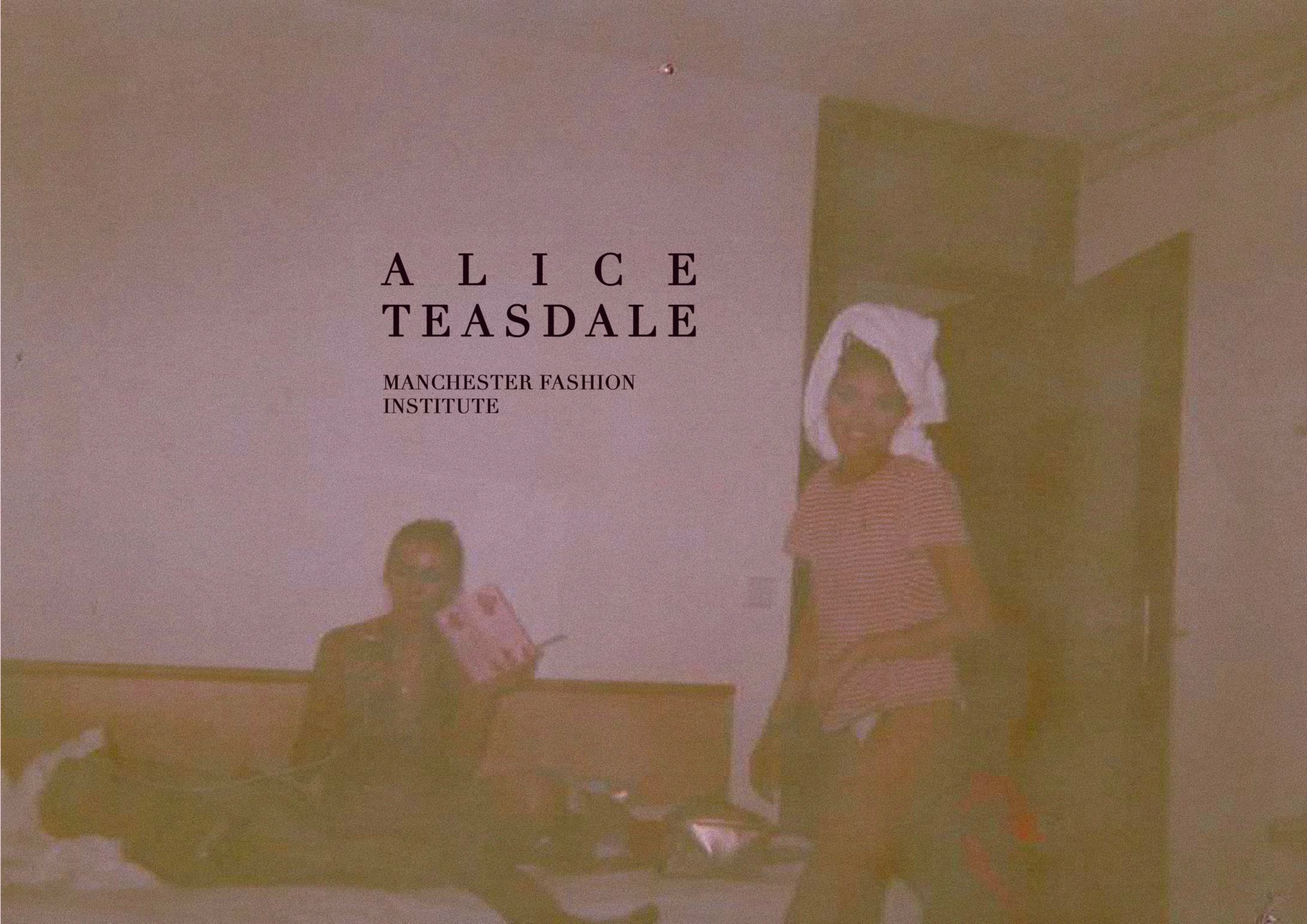
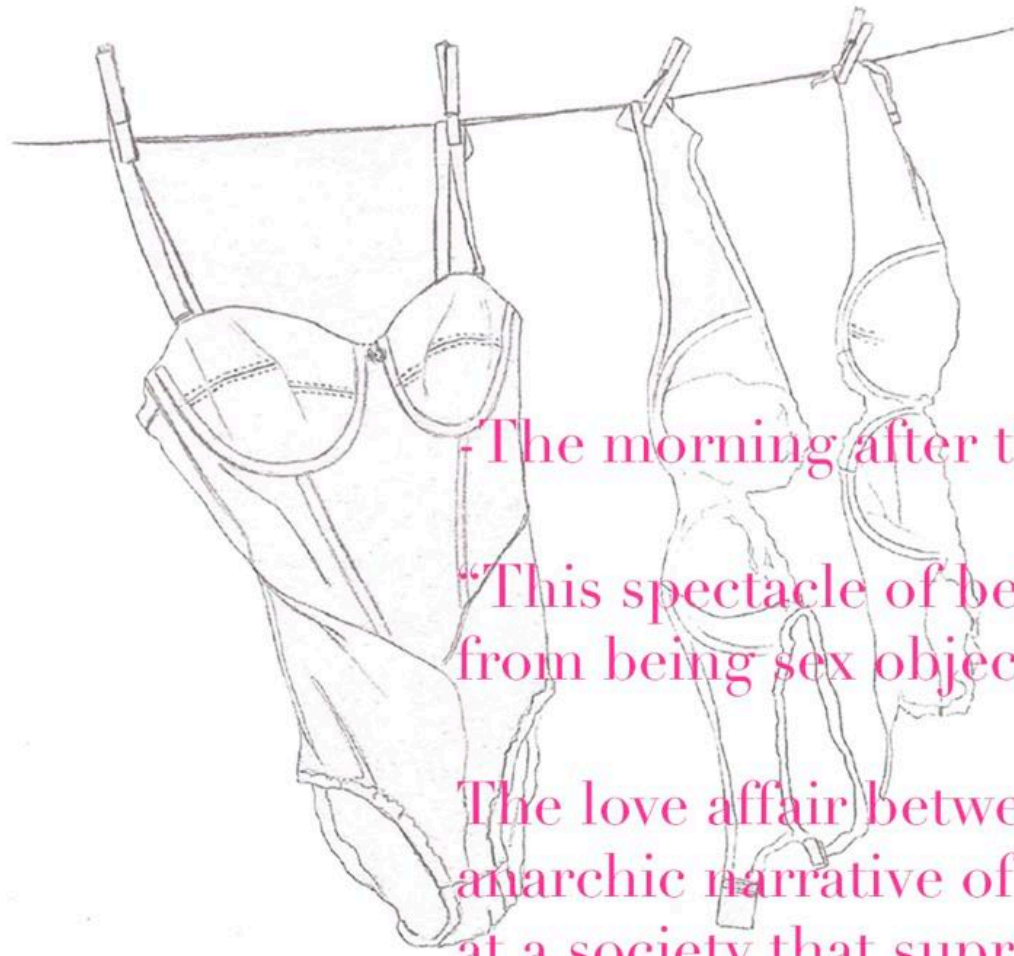


A L I C E  
T E A S D A L E

MANCHESTER FASHION  
INSTITUTE





The morning after the night before-

“This spectacle of being gorgeous is about women’s movement in visual culture from being sex objects to self-determined art objects.” - J. Willson, 2015

The love affair between female sexuality and the narrative of femininity. An anarchic narrative of female youth both iconic and transformative. Biting back at a society that suppresses the celebration of explosive womanhood, encouraging women to take pleasure in the theatricality of their own bodies, embracing the momentum of female liberation.

PLAYBOY'S BOOK OF

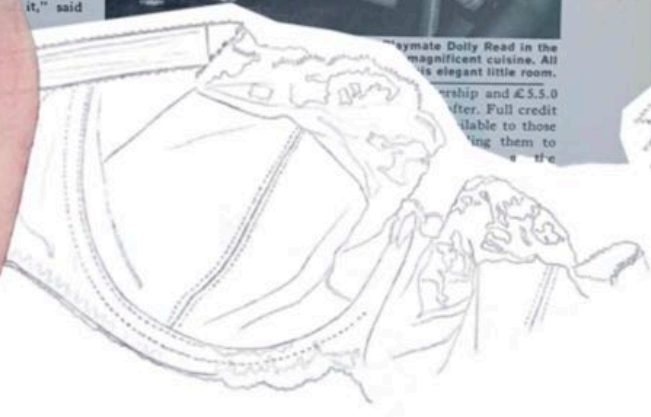
LINGERIE



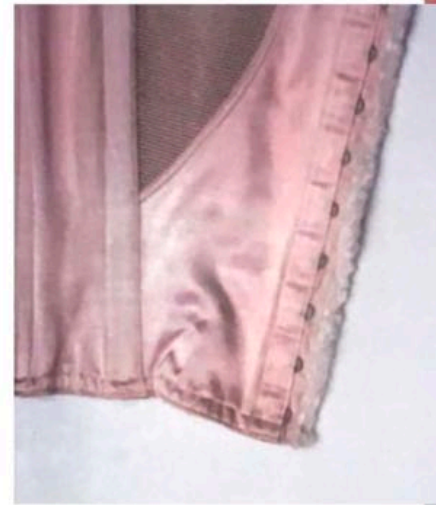
A person who is very flat-chested is very hard to be a 10



Ringlet for Holiday glamour Lovable

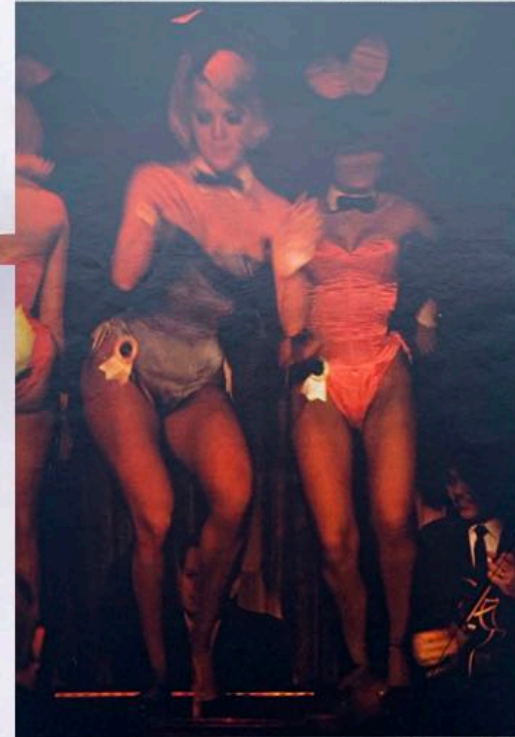


My work is an excited inquiry into the nature of femininity within a hypersexualised culture. Focusing on the scandal of female liberation, entwined with a playful narrative of female youth. Drawing on notions of glamour associated with female power and sexuality; transforming the traditionally taboo into a more sophisticated medium whereby it is valued as art.



## THE BUNNIES

*a words-and-pictures  
piece to the hutch honeys  
of the show-me state*



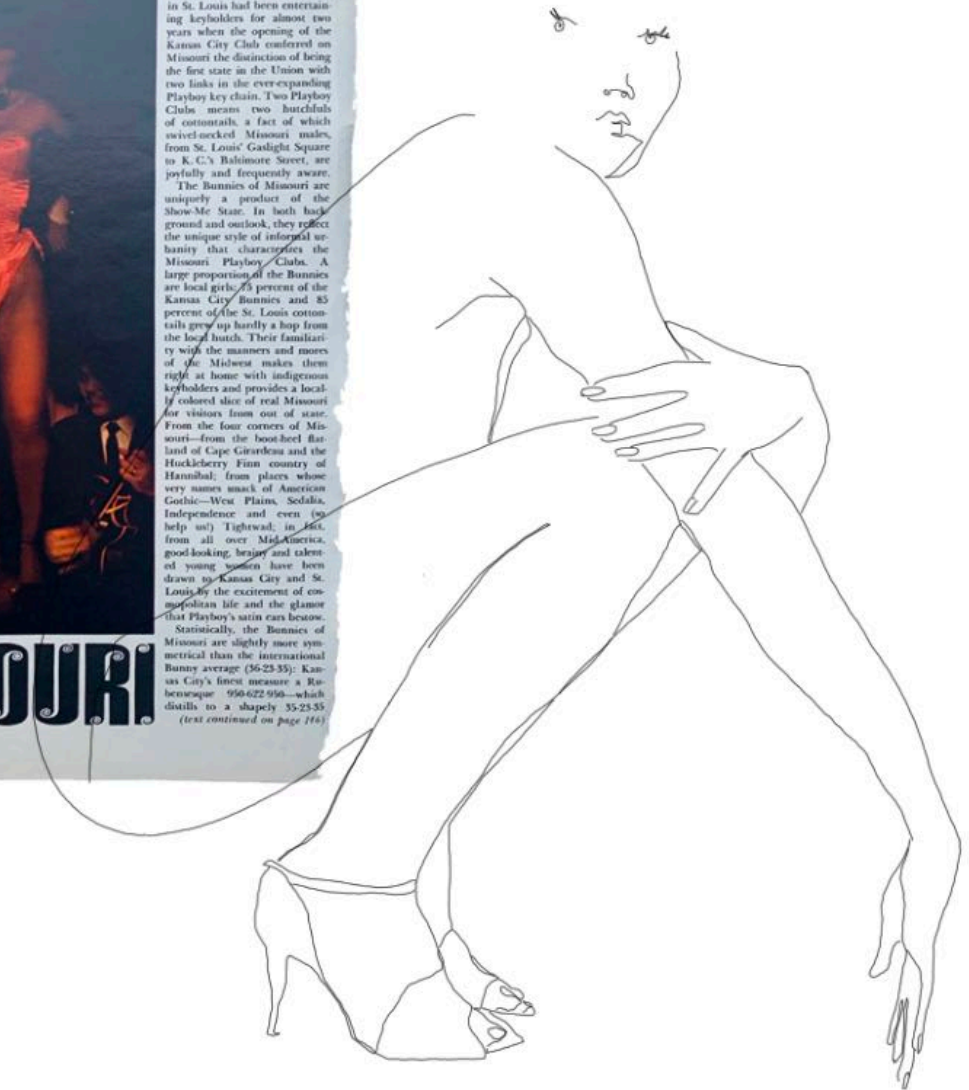
MISSOURI may evoke images of Harry Truman to the historian, Stan Musial to the baseball fan, Mark Twain to the bibliophile, Charlie Parker to the jazz buff and even the Gateway Arch to the tourist; but to connoisseurs of female pulchritude, the Show-Me State has recently shown just one thing—beautiful Bunnies. The Playboy Club in St. Louis had been entertaining keyholders for almost two years when the opening of the Kansas City Club conferred on Missouri the distinction of being the first state in the Union with two links in the ever-expanding Playboy key chain. Two Playboy Clubs means two hundreds of cottontails, a fact of which swivel-necked Missouri males, from St. Louis' Gaslight Square to K.C.'s Robinson Square, are joyfully and frequently aware.

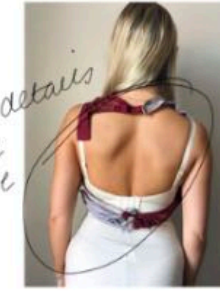
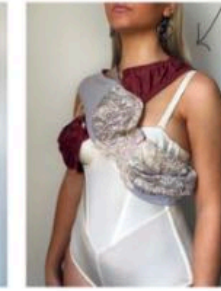
The Bunnies of Missouri are uniquely a product of the Show-Me State. In both background and outlook, they reflect the unique style of intemperate urbanity that characterizes the Missouri Playboy Clubs. A large proportion of the Bunnies are local girls, 75 percent of the Kansas City Bunnies and 85 percent of the St. Louis cottontails grew up hardly a hop from the local hutch. Their familiarity with the manners and mores of the Midwest makes them right at home with indigent keyholders and provides a locally colored slice of real Missouri for visitors from out of state.

From the four corners of Missouri—from the boot heel of the Cape Girardeau and the Huckleberry Finn country of Hannibal, from places whose very names smack of American Gothic—West Plains, Scalfia, Independence and even (to help us) Tightwad, in 1963, from all over Mid-America, good-looking, bony and adorned young women have been drawn to Kansas City and St. Louis by the excitement of cosmopolitan life and the glamor that Playboy's satin can bestow.

## OF MISSOURI

Statistically, the Bunnies of Missouri are slightly more symmetrical than the international Bunny average (36-23-33); Kansas City's finest measure a Rubensque 39-22-35—which translates to a shapely 35-23-33.  
*(text continued on page 116)*

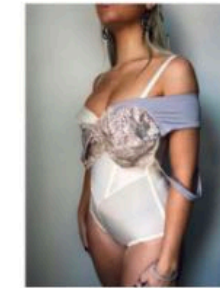




thick straps for haterneck style

tile details more drape

stretch fabric to accommodate for restrictive cut

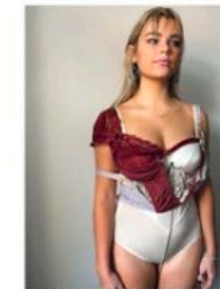
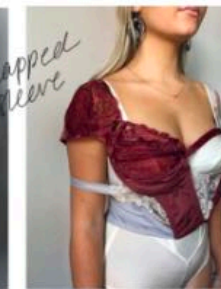


larger cup offset



multiple hook + eye foreneck

using underwire more unconventional



capped sleeve

decorative use of straps over the bust



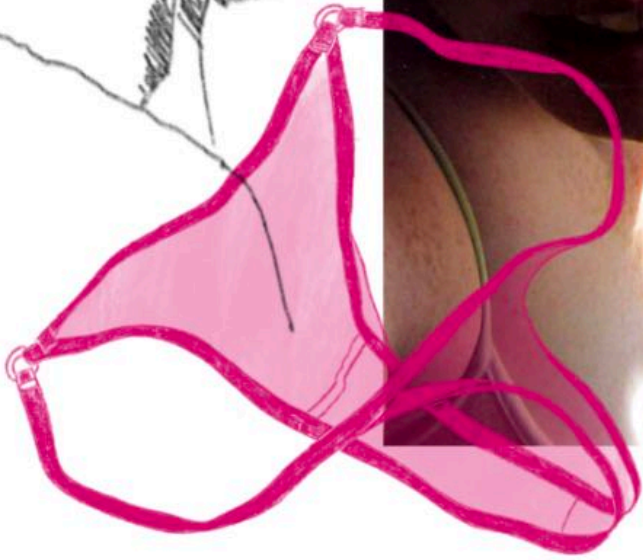
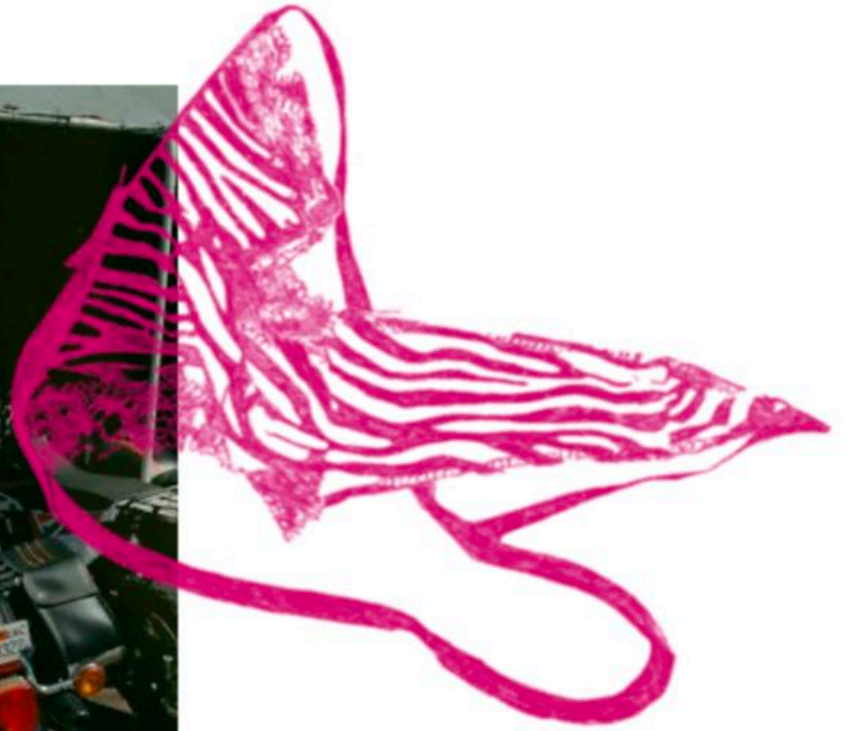
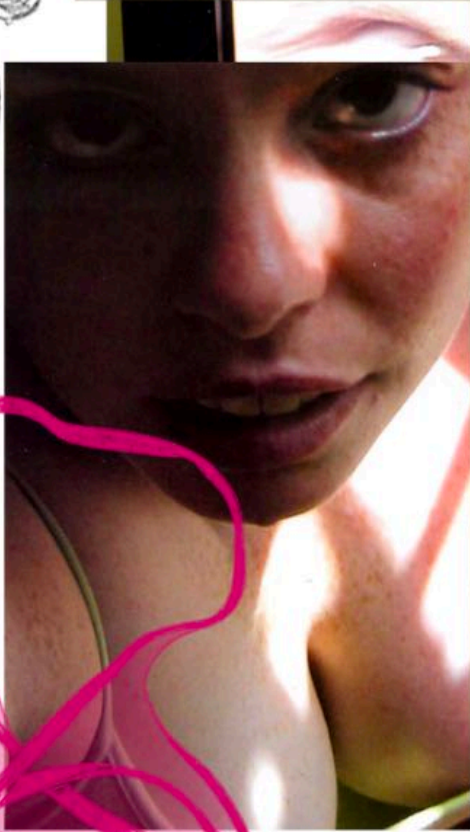
My work is sexy but not vulgar, both feminine and practical because why can't we have it all. I love the idea of creating something desirable and that's not just a pretty façade of frills. Yet still my work is unashamedly feminine but has an edge which resonates with the modern woman.

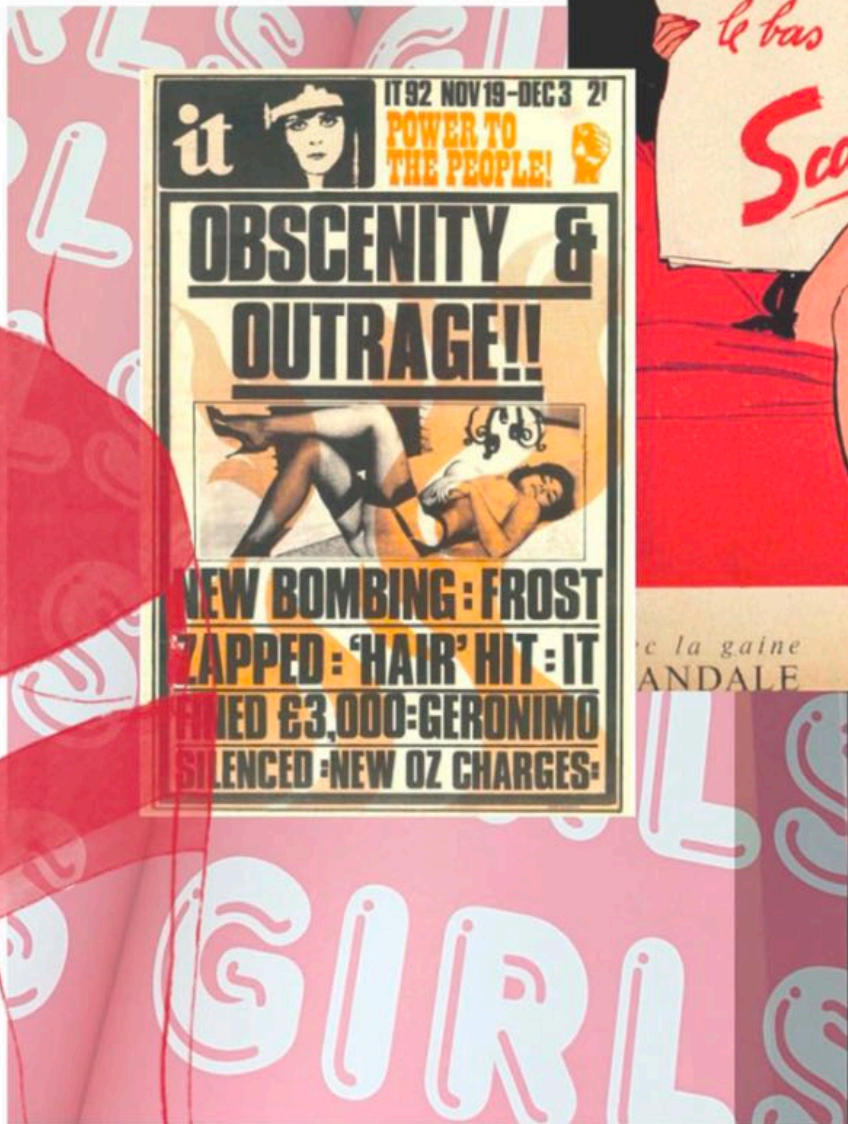
Accentuating the body through the play of revealing and concealing; combining the perverse and rebellious with delicate femininity. Lending the glamorous connotations of lingerie to the everyday, "making the super sexy work in an everyday chic kind of way" (Scott, 2003: 203).






EVERY  
THING  
IS SHIT





IT 92 NOV 19-DEC 3 21

**it**  **POWER TO THE PEOPLE!** 

**OBSCENITY & OUTRAGE!!**



**NEW BOMBING: FROST ZAPPED: 'HAIR' HIT: IT FINED £3,000: GERONIMO SILENCED: NEW OZ CHARGES:**

*le bas*

**Scandale**



*de la gaine*  
**ANDALE**

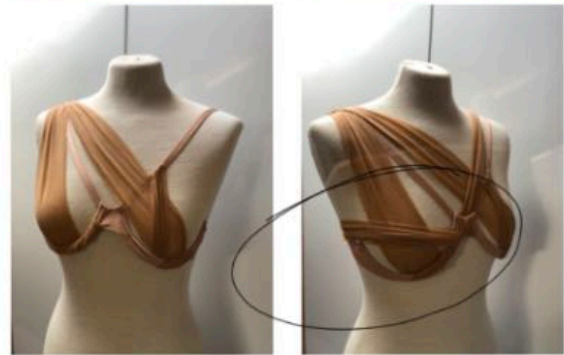
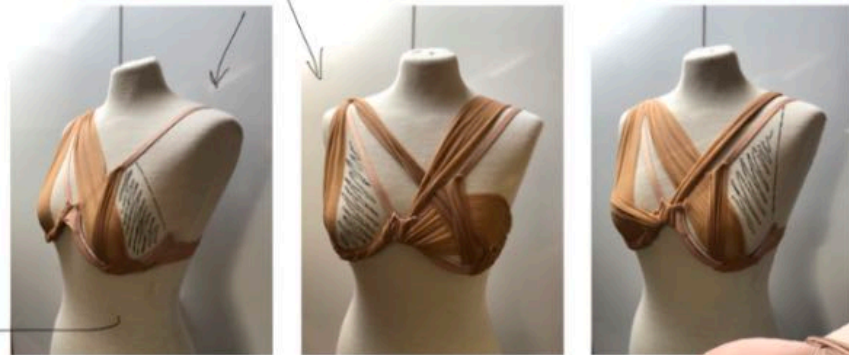
GROS : SEPO, S. /  
48, rue de Stassart, BRUXELLES - Tél. 12.721





repetition  
of elastic  
straps -

ideas for mesh  
inserts.

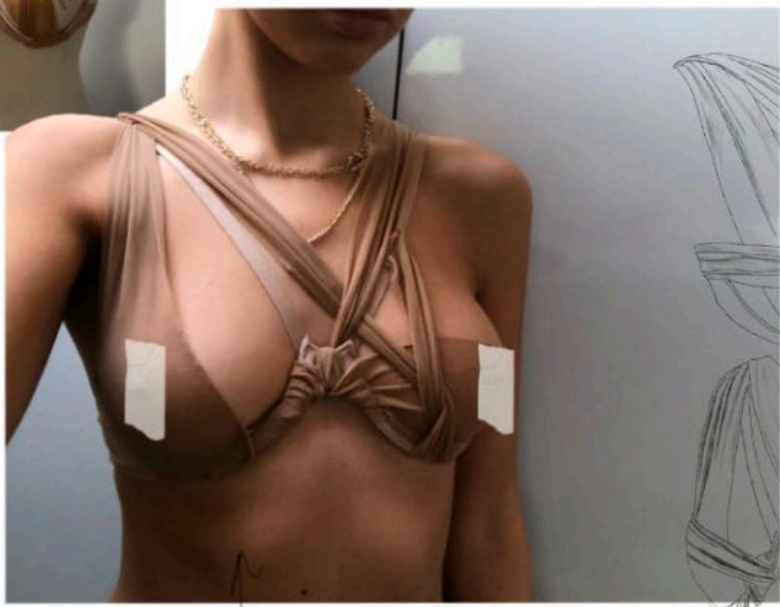


covering the nipples  
- modesty

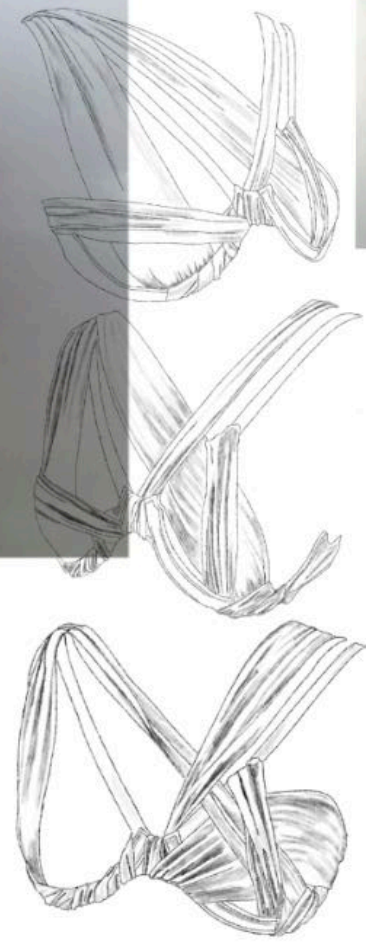
wrapping  
heights



combining different  
weights + tones of mesh



creating  
cups w/ lines  
more organic  
shape



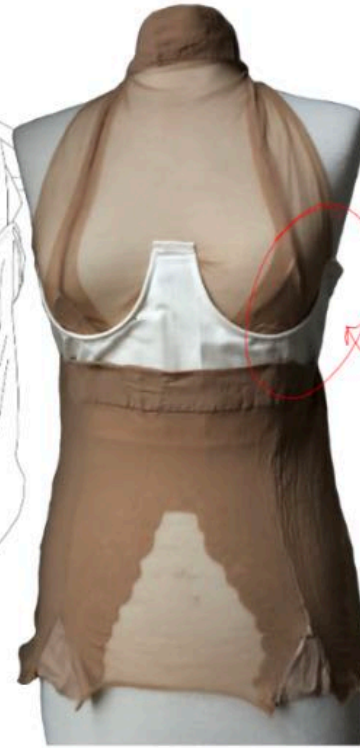


IMG\_6900.JPG

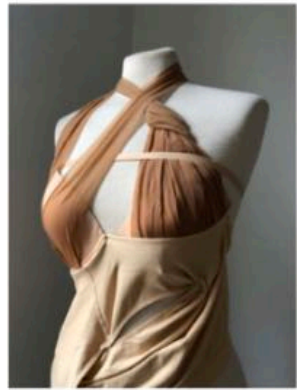


IMG\_6907.JPG

*gathered under bust*



*crotch details from tights into triangle cup*

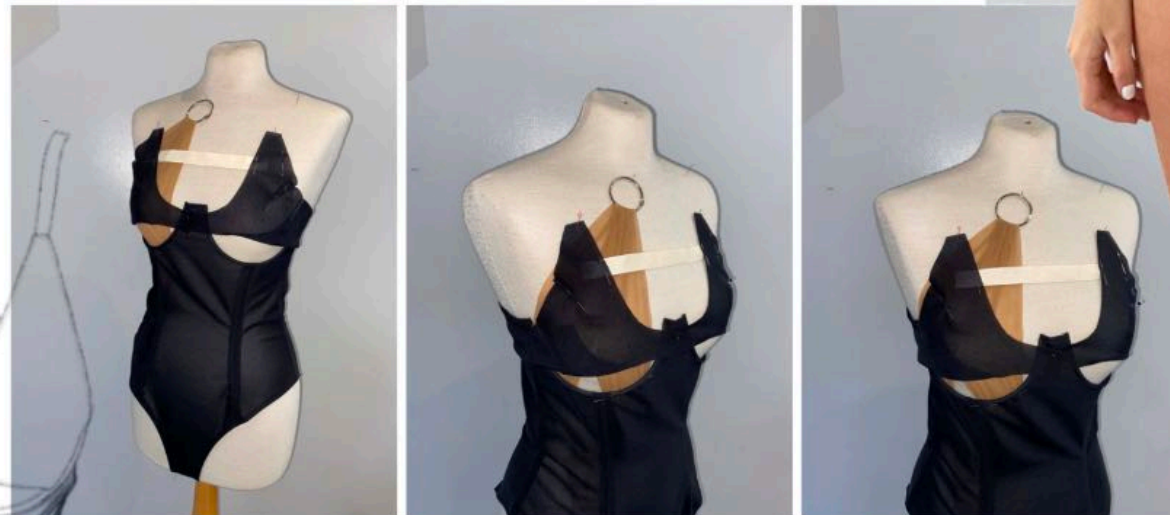
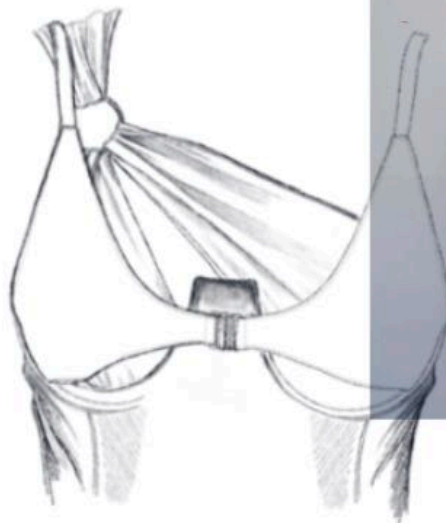
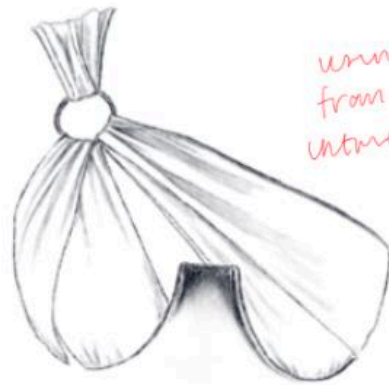


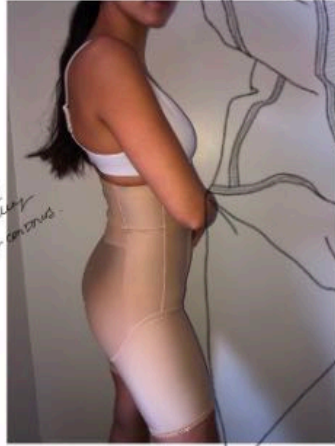
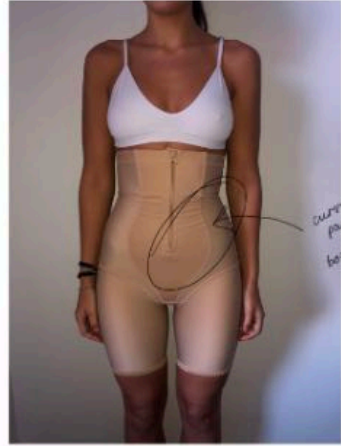
IMG\_6911.JPG



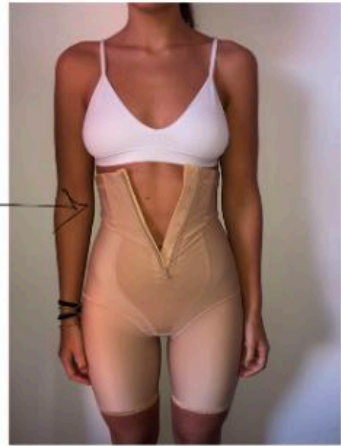
IMG\_6914.JPG

*using details from tights for uncreasy*

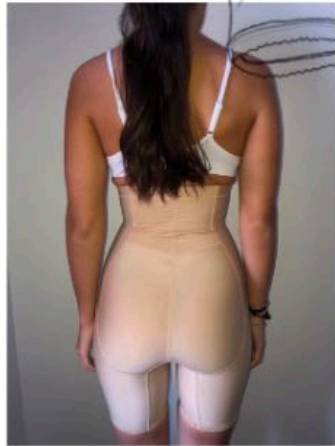




*curved padding  
body contours*



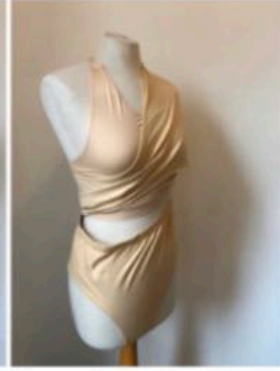
*hook and eye inner  
fastener w/ near  
zip*



IMG\_6788.JPG



IMG\_6790.JPG



IMG\_6792.JPG

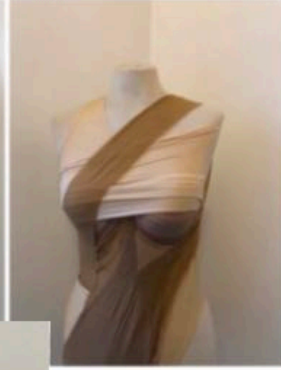


IMG\_6797.JPG

*XL  
KNICKERS*



IMG\_6808.JPG



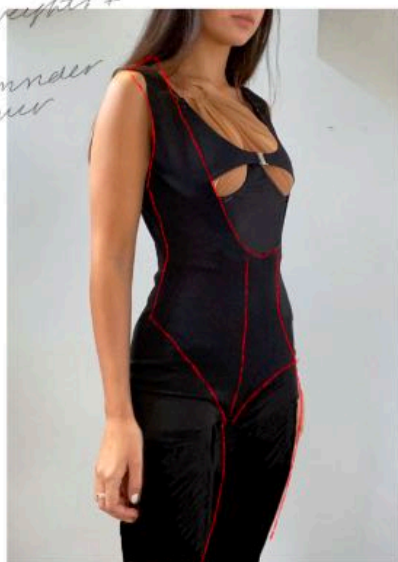
IMG\_6810.JPG



IMG\_6811.JPG



*combination of  
different weaves +  
textures  
↳ consider  
denier*



*different cut  
ideas - exposing  
elements of the body*

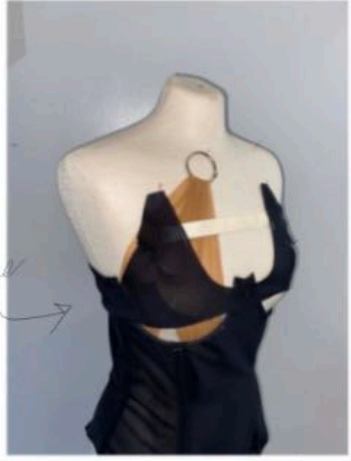




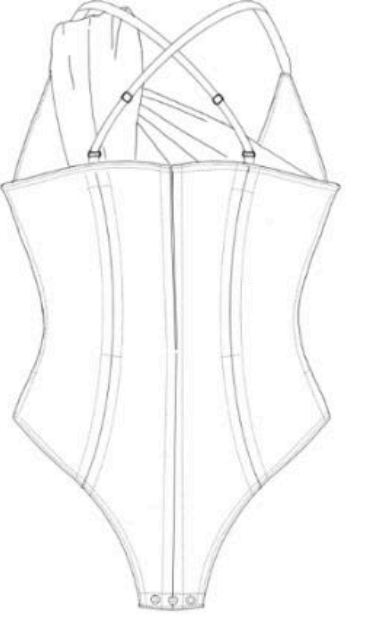
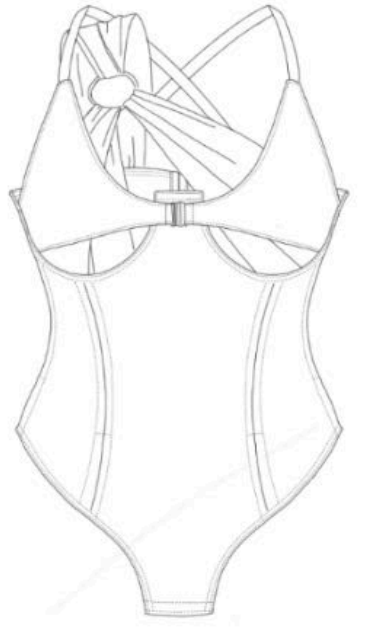
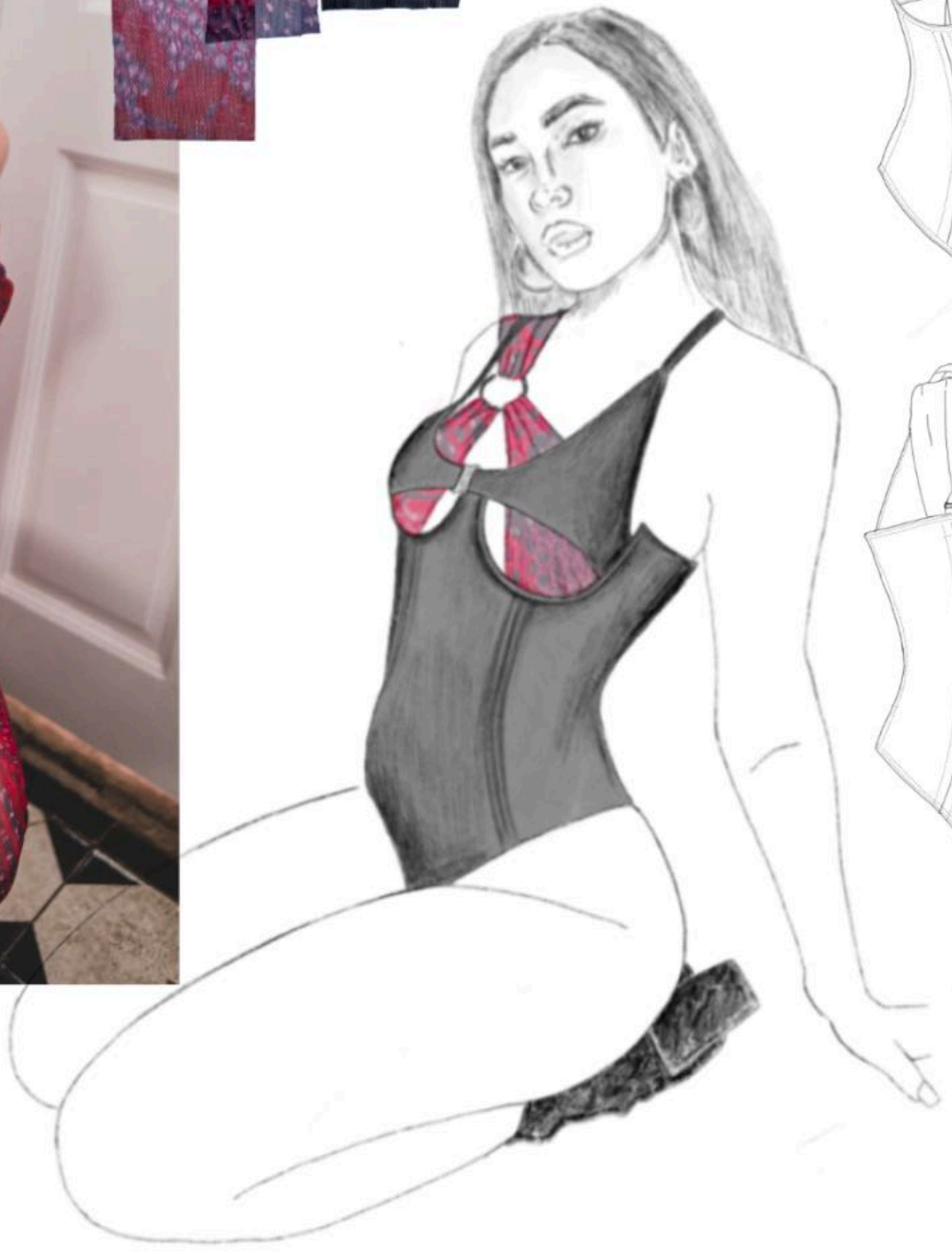
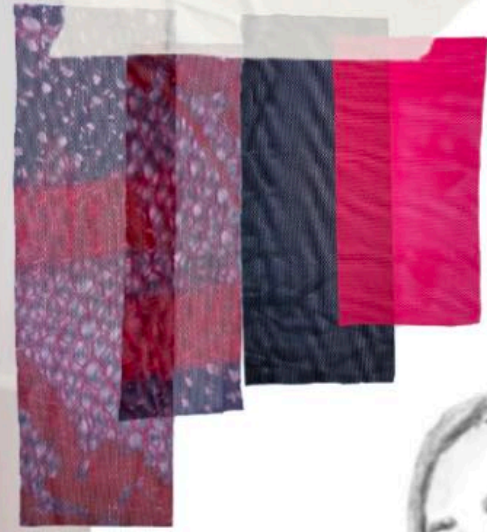
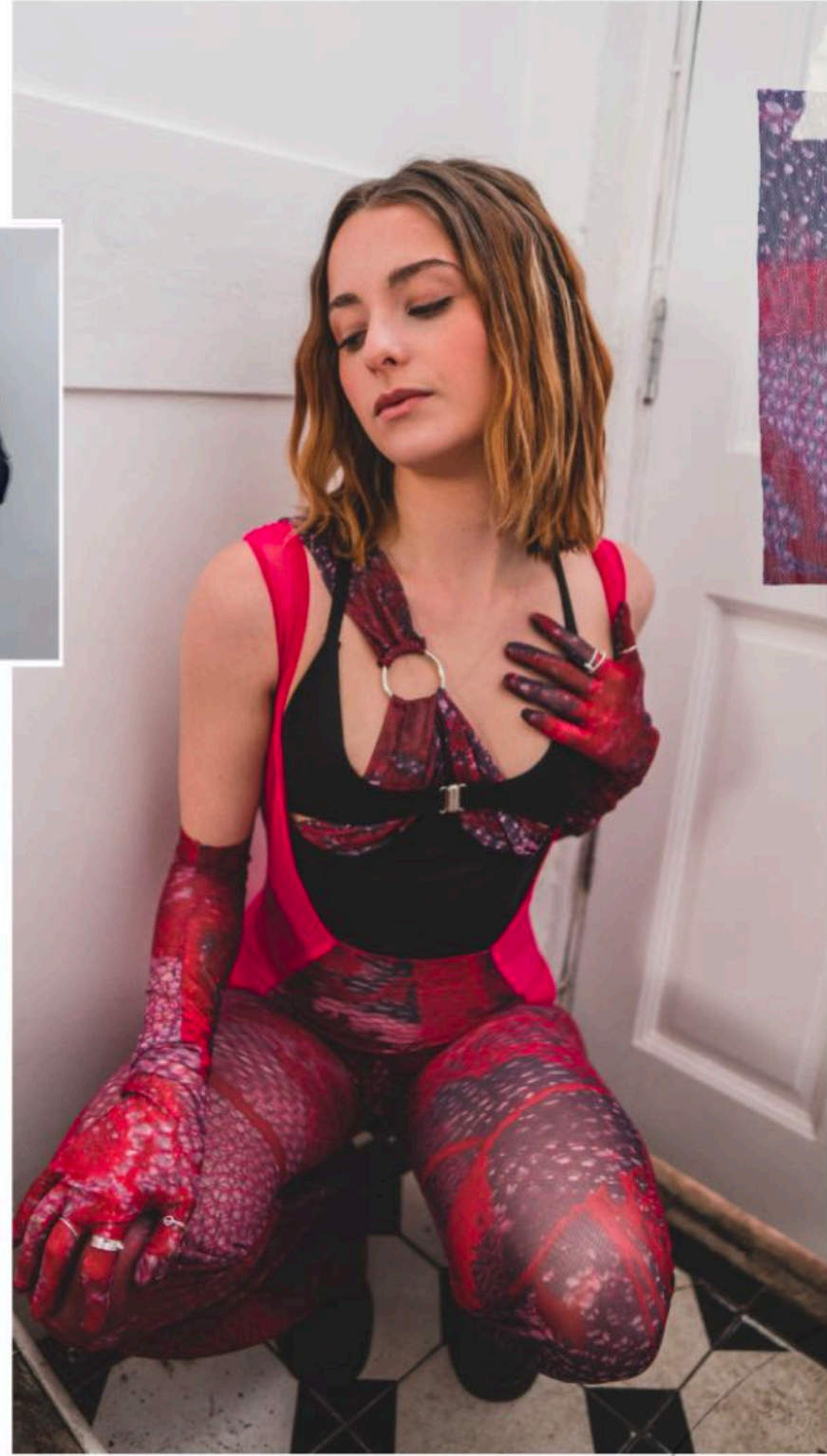
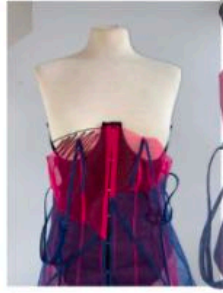
underbust  
cut away  
→ bikini  
deep front



tights  
shape



→ using layering  
to then create paneling/  
cut ideas -





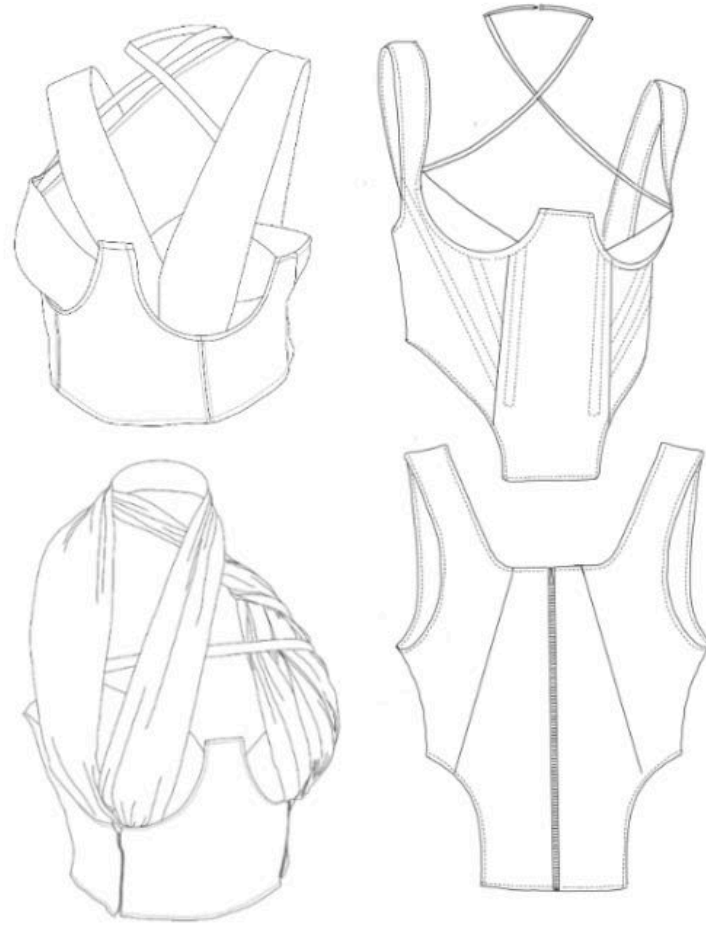
IMG\_6871.JPG

IMG\_6874.JPG

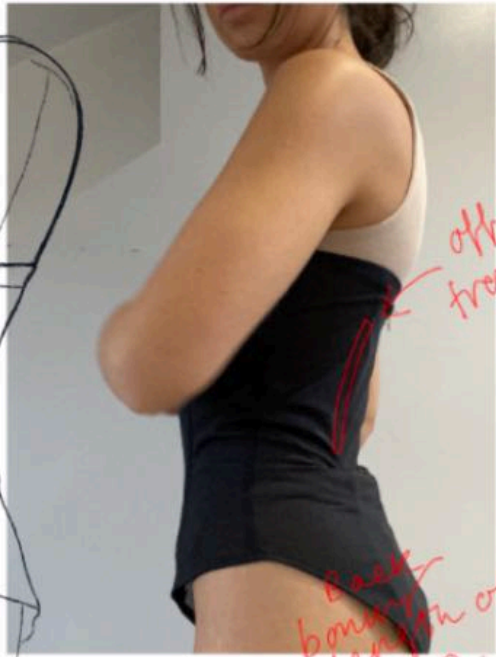
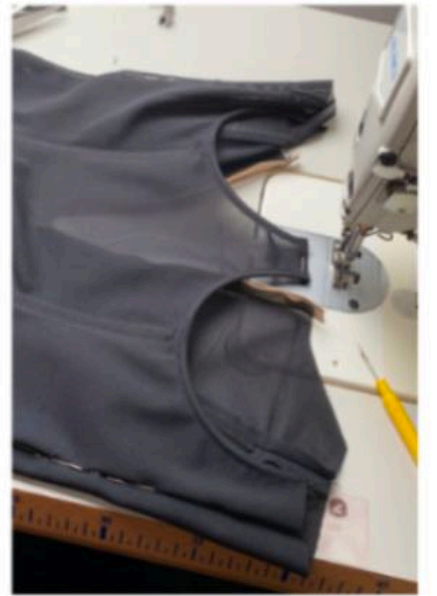


IMG\_6876.JPG

IMG\_6877.JPG



*adjusting  
the fit -  
taken in at  
side seam*



*Back  
bondage  
length of  
zip*

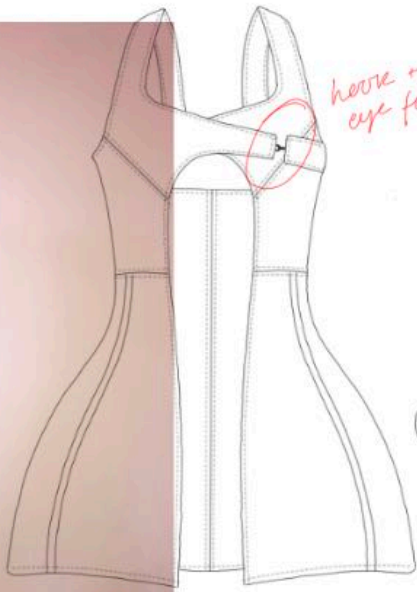
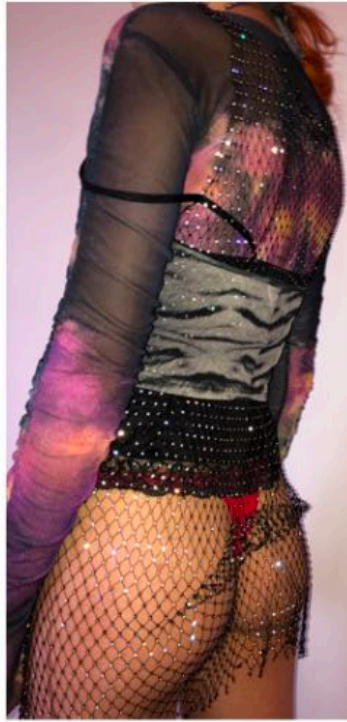
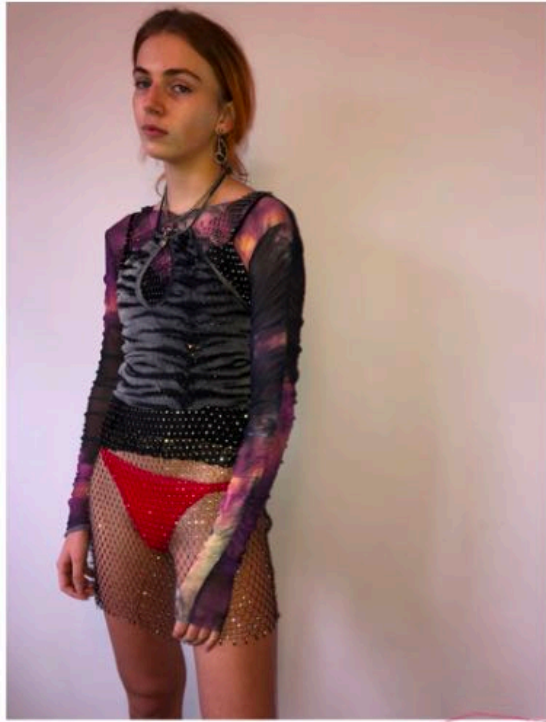


*offset  
from the  
hem*

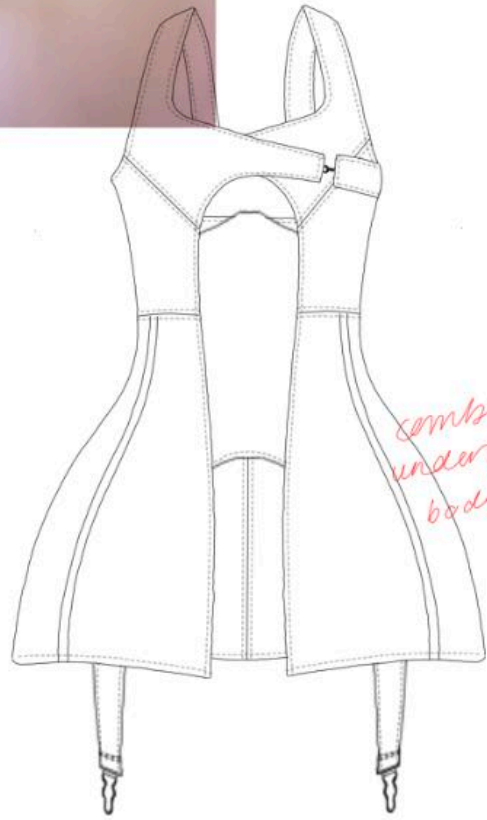
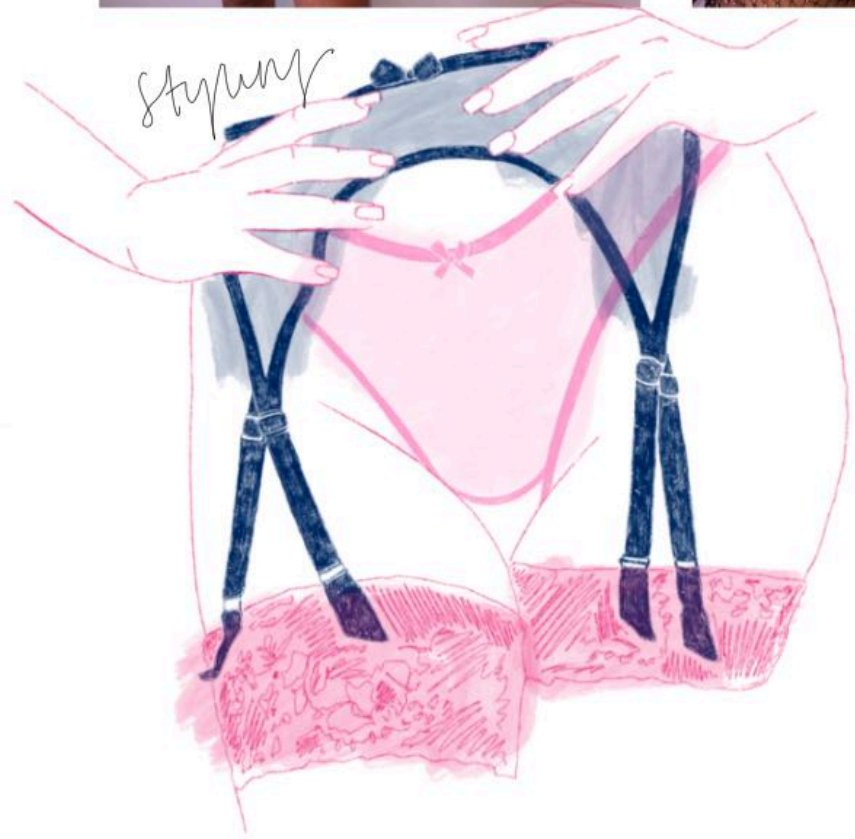


reworking  
knickers  
w/ eyelet  
detail.





hoor + eye front

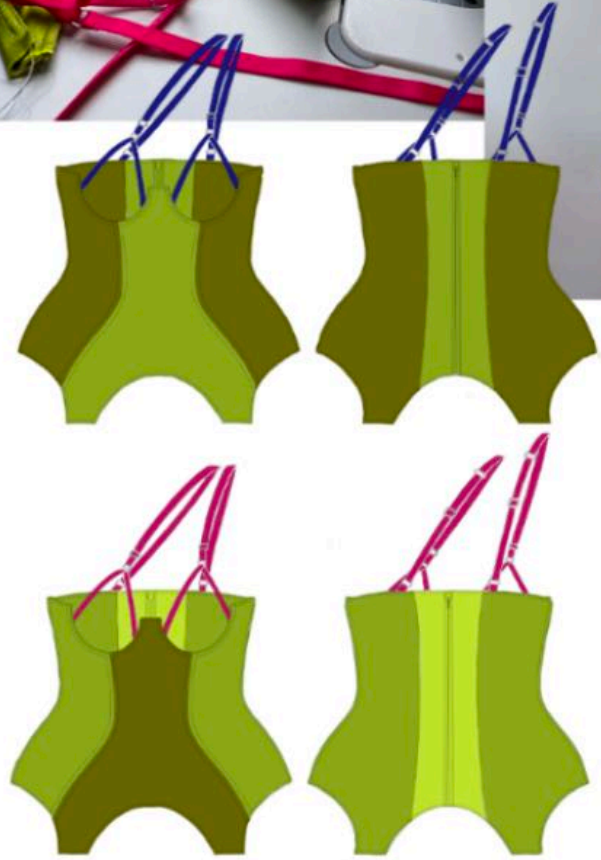
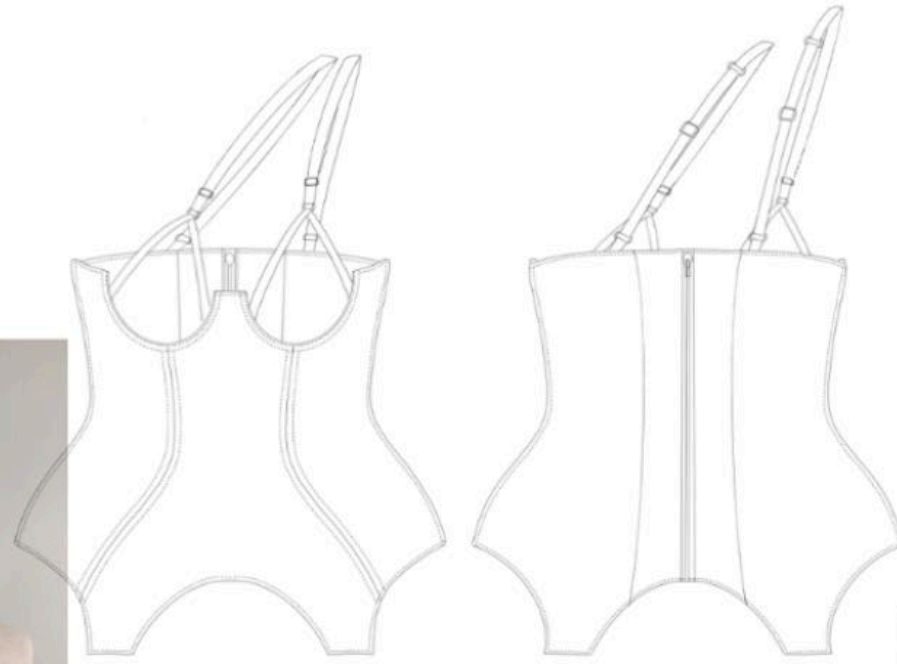
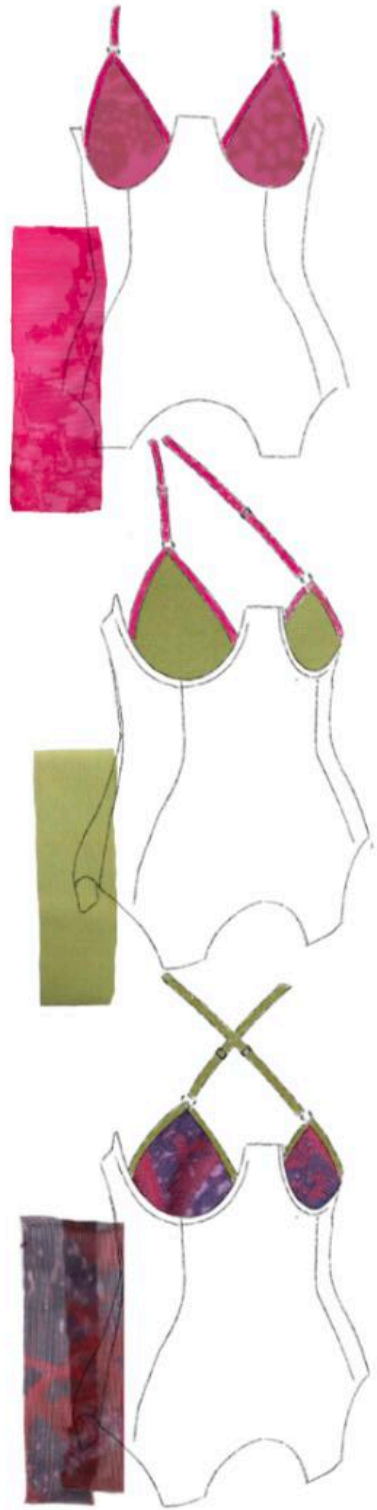


combining underbust body + waist jacket

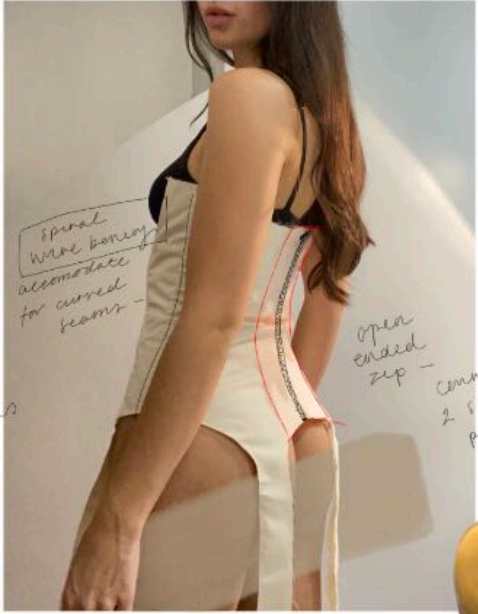




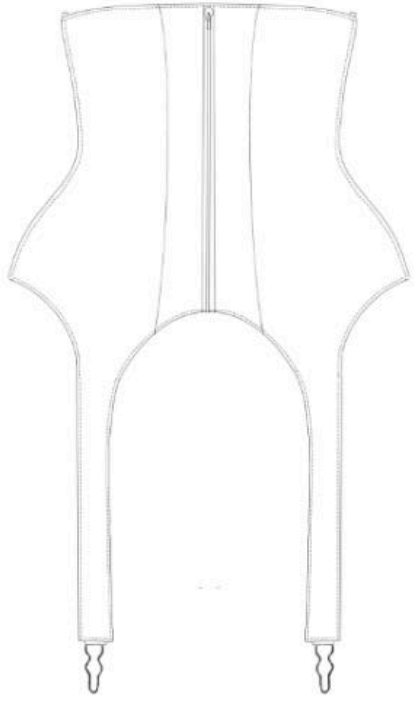
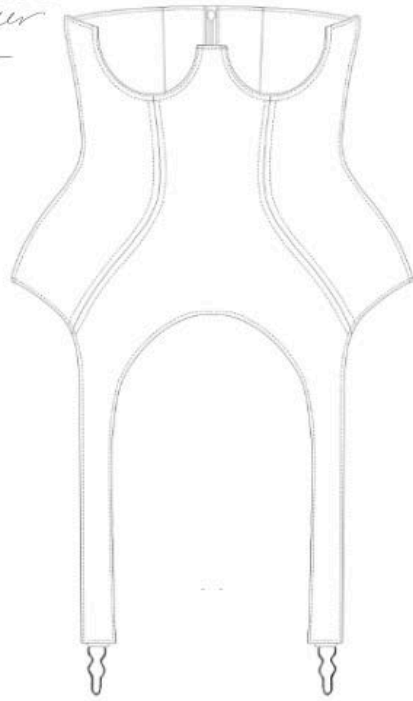








decorative suspender belts -



underwire cup -

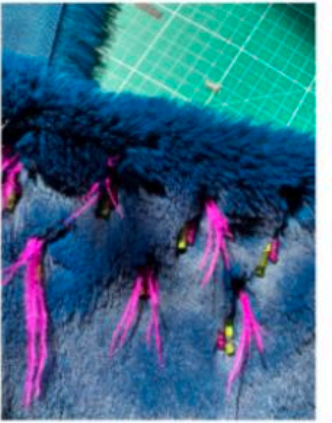
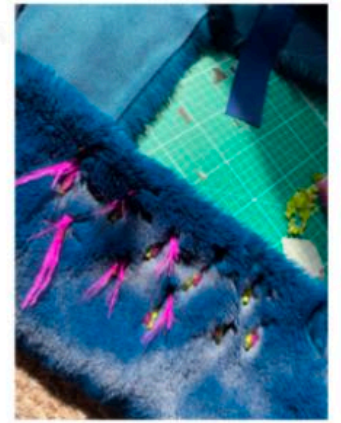
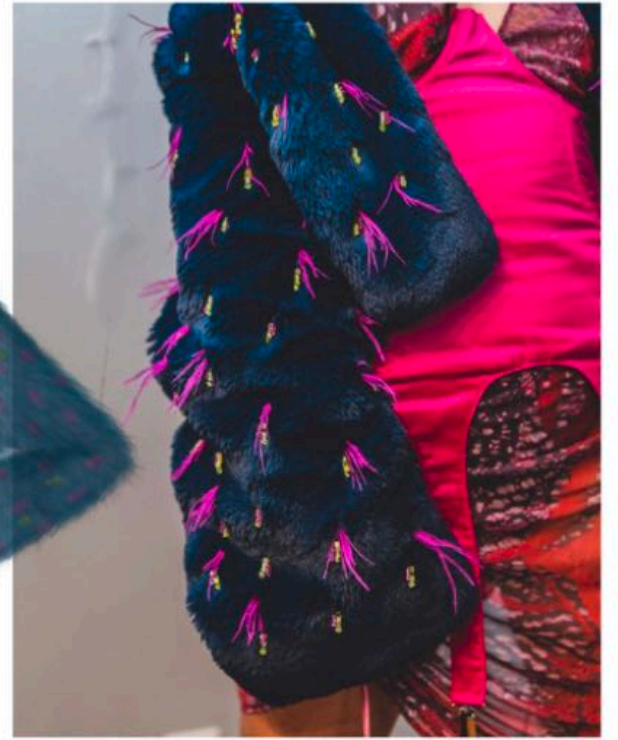
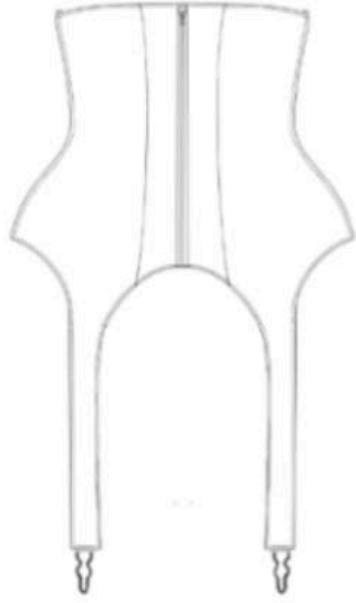
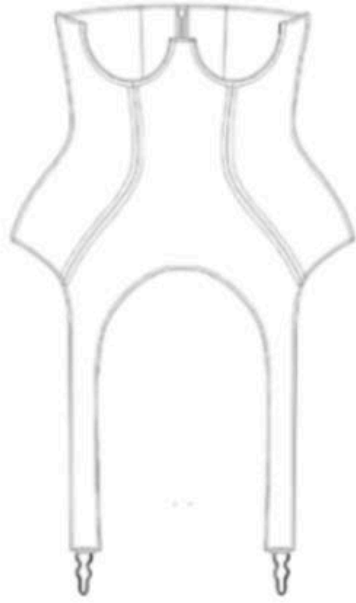
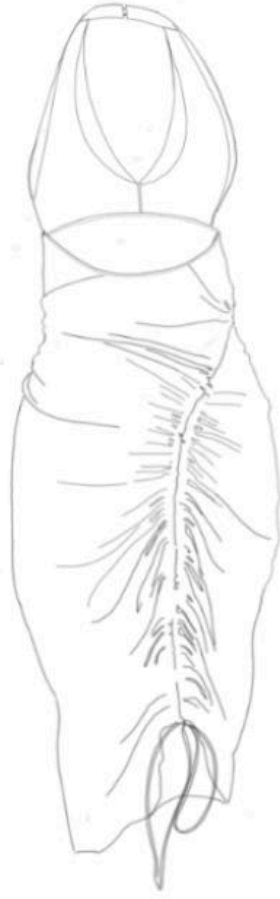
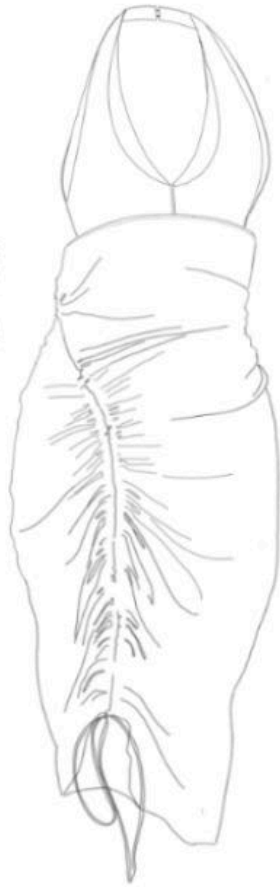
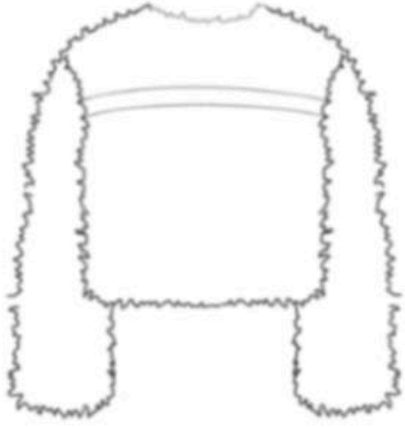
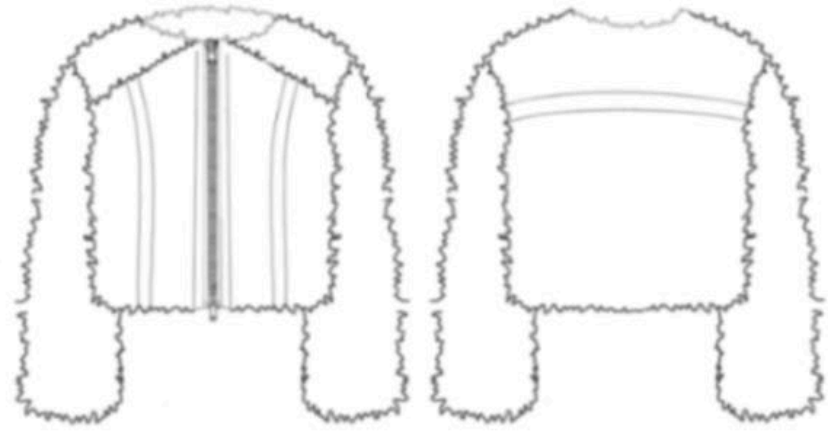
top stretch fabric

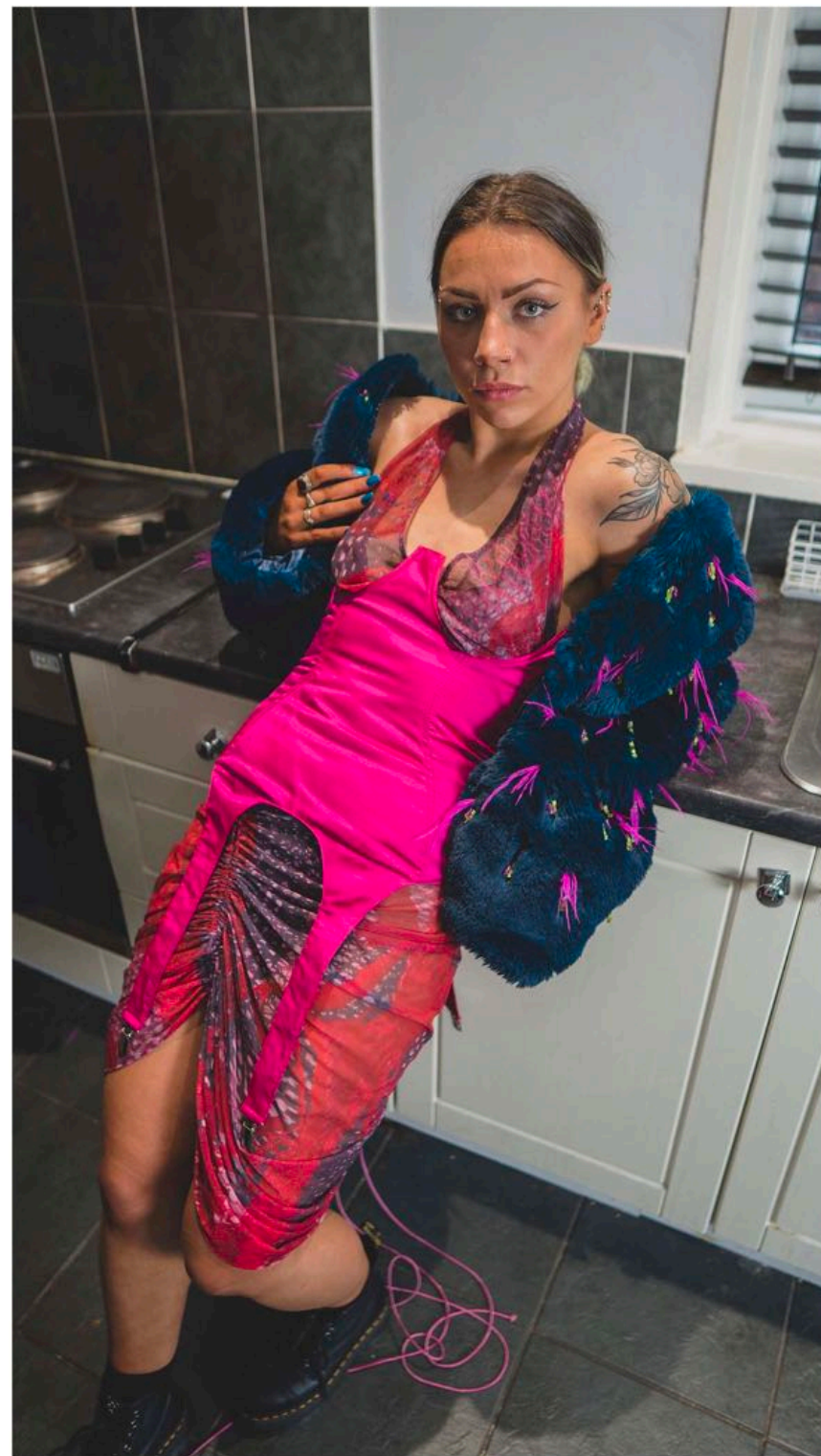
back stretch panels

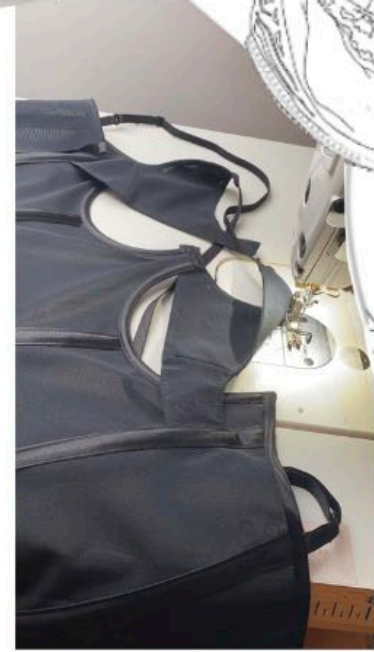
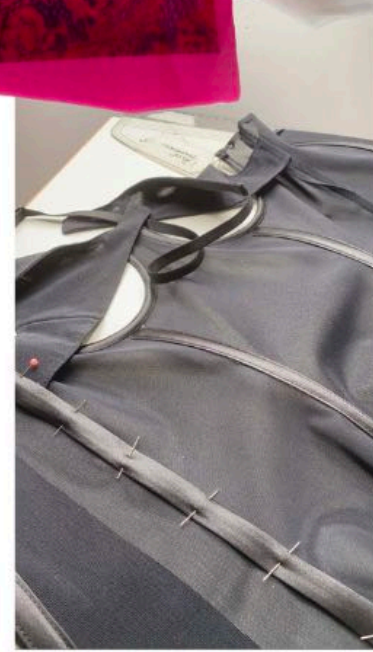
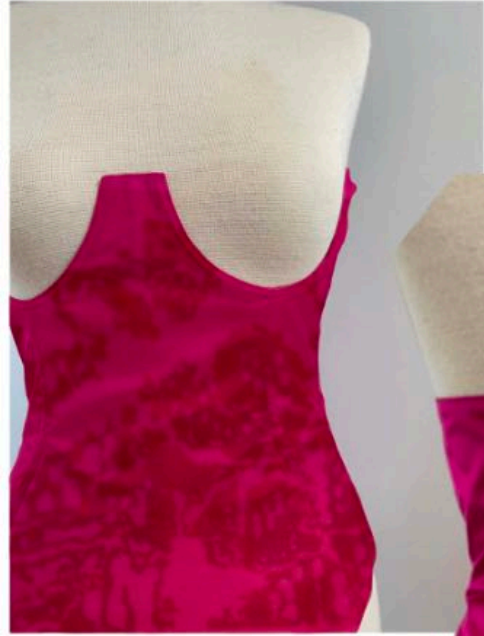
spinal wire boning accommodate for curved seams -

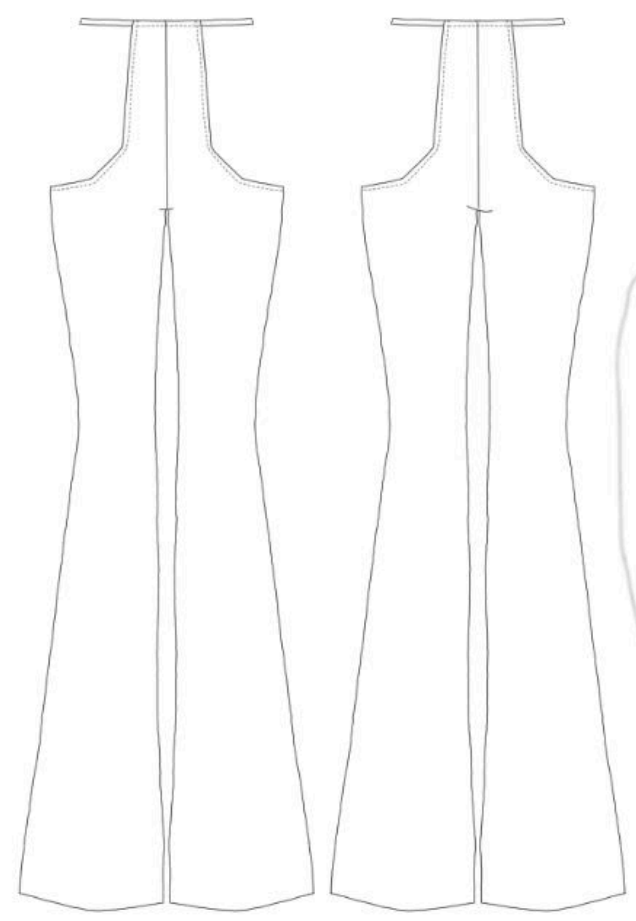
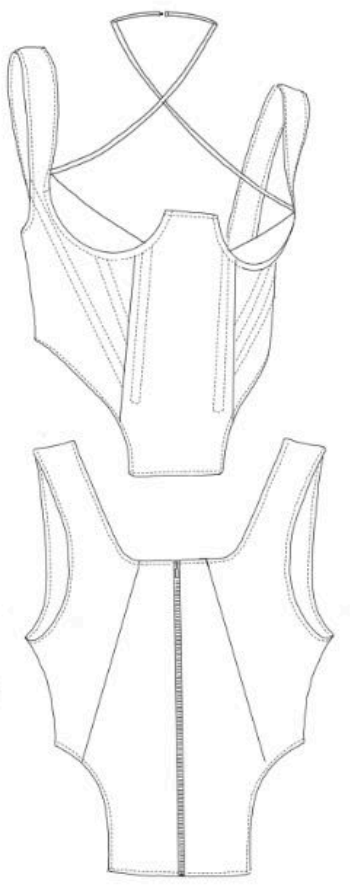
open ended zip -

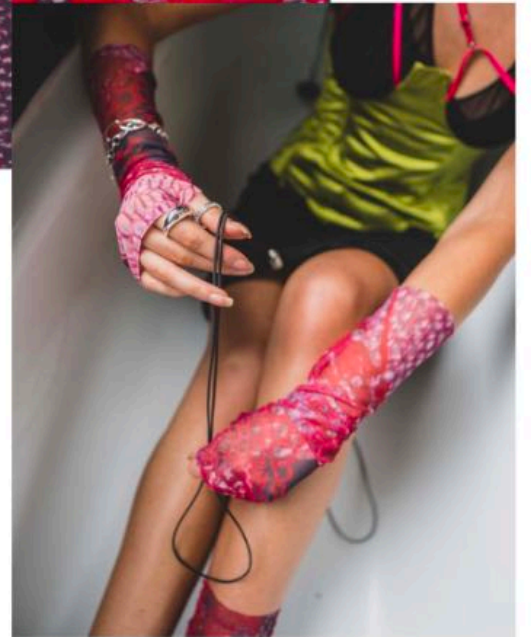
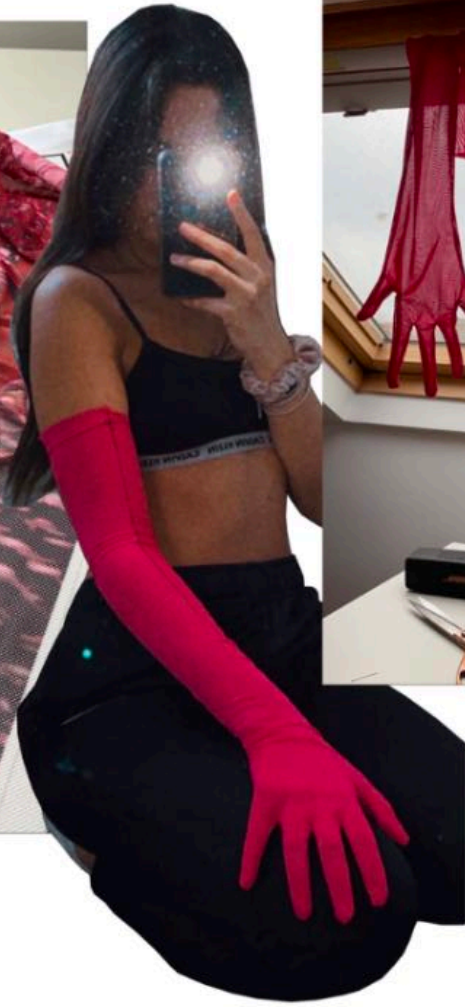
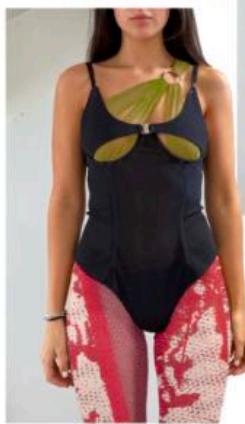
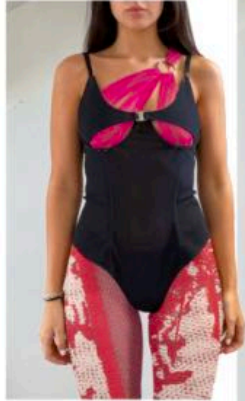
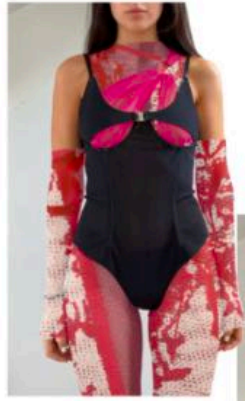
connect 2 stretch pieces



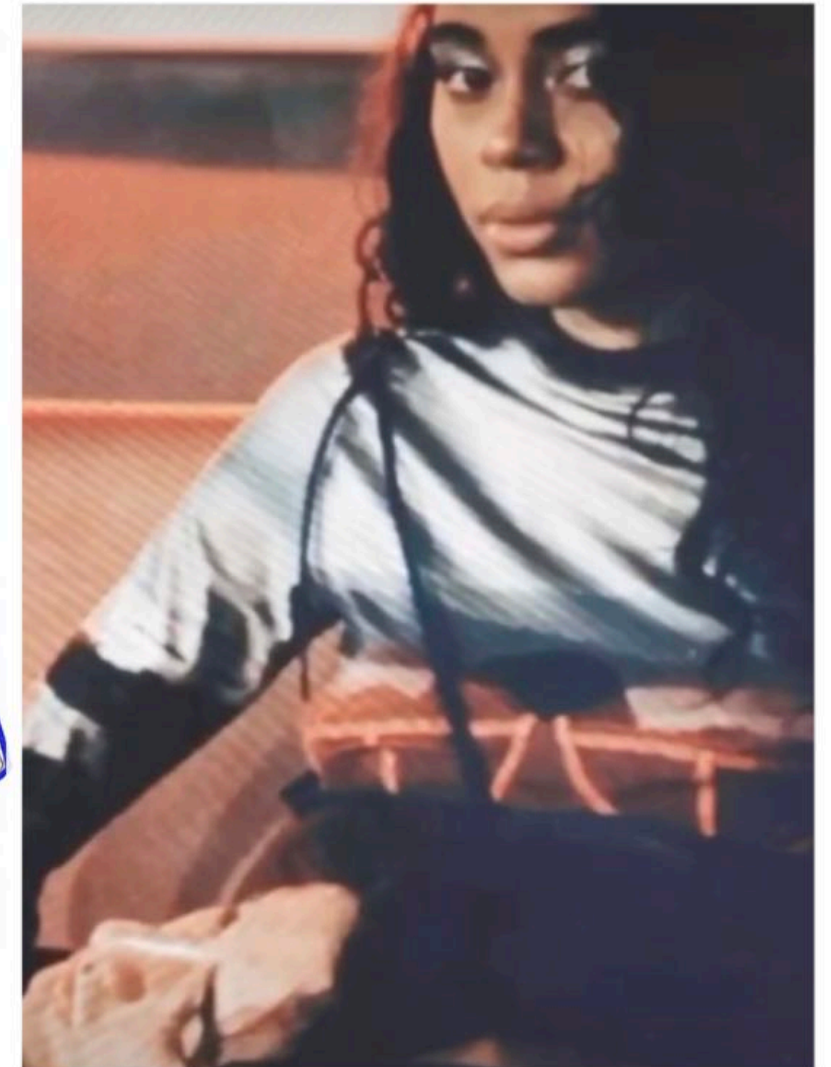










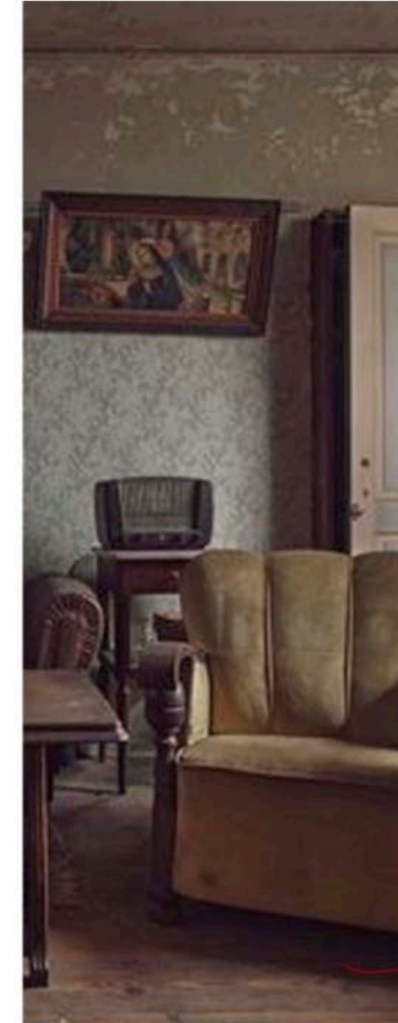
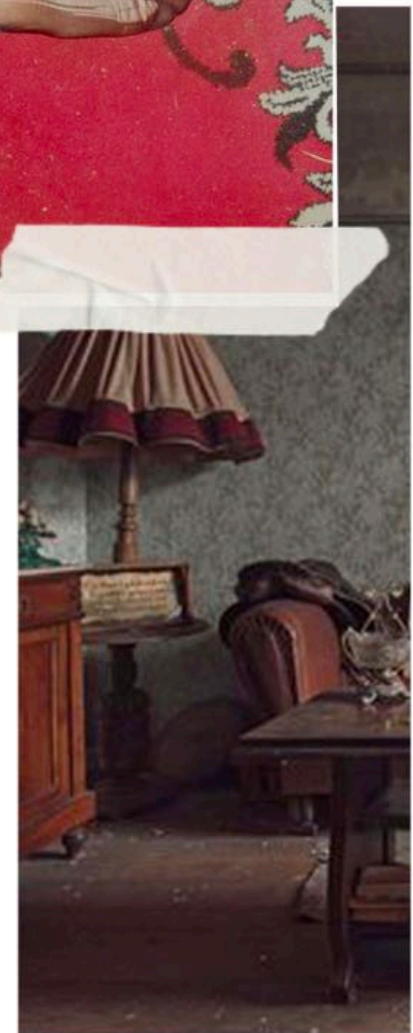
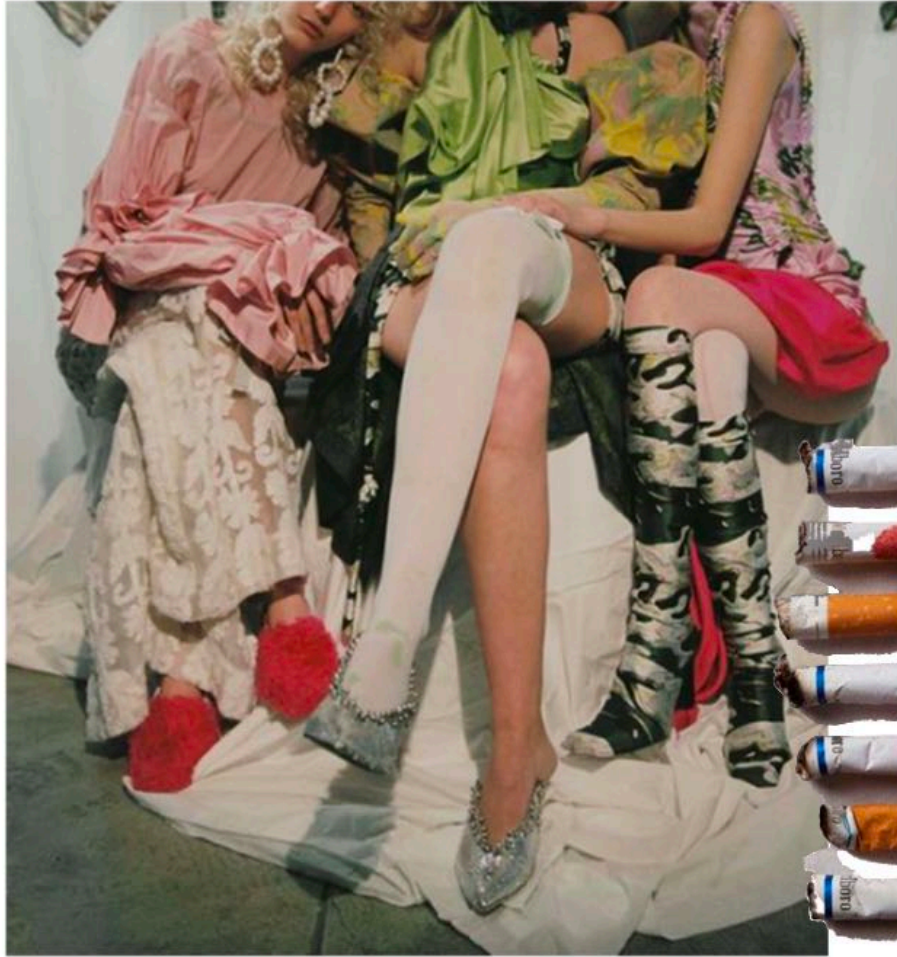








Considered Capsule Collection  
- The Frustrated Housewife-



## Polyester Yarn -

Polyester Yarn is made with used plastic bottles which are ready to be recycled, they are cut, chopped, and melted, then formed into flakes. 100% Recycled Yarn is obtained from these flakes to make recycled fabrics. JF Recycled Fabric is made from recycled polyester yarns and recycled cotton yarns.



Both puff  
sleeve shoulder/  
bow tie forming  
for volume



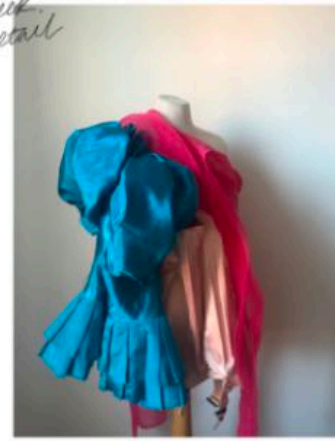
pleats on  
the asymmetrical  
cut for volume



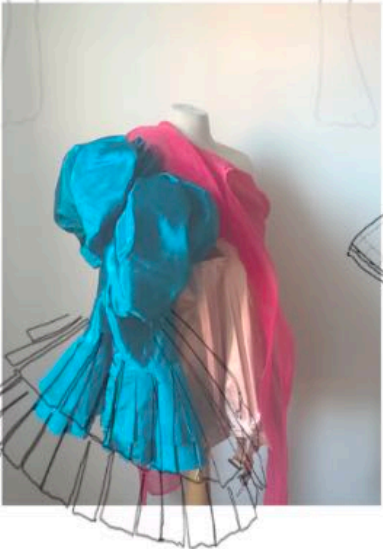
double  
puff sleeve  
full length



halter neck  
tie detail



want tie



suspender  
detail

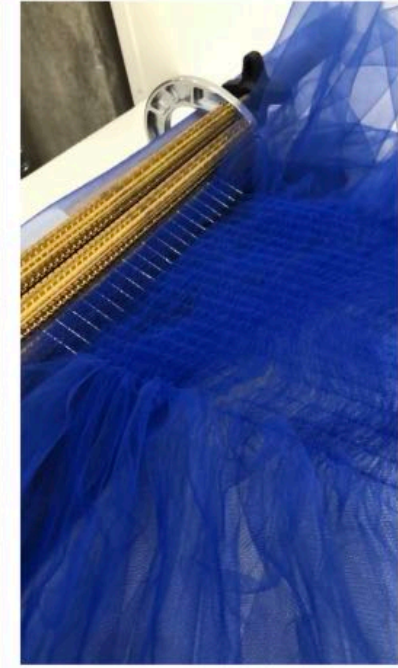
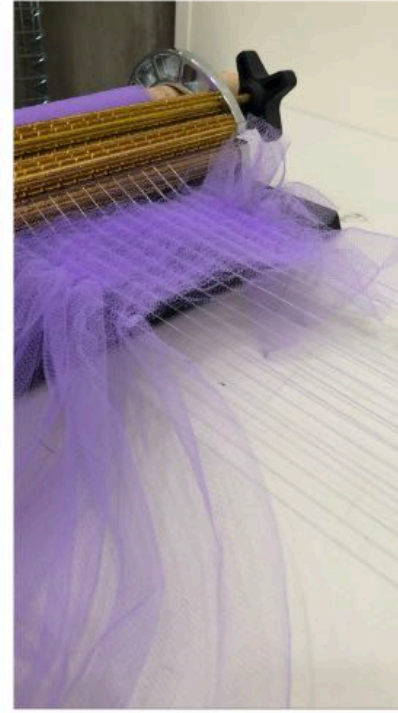




IMG\_6803.JPG



IMG\_6808.JPG



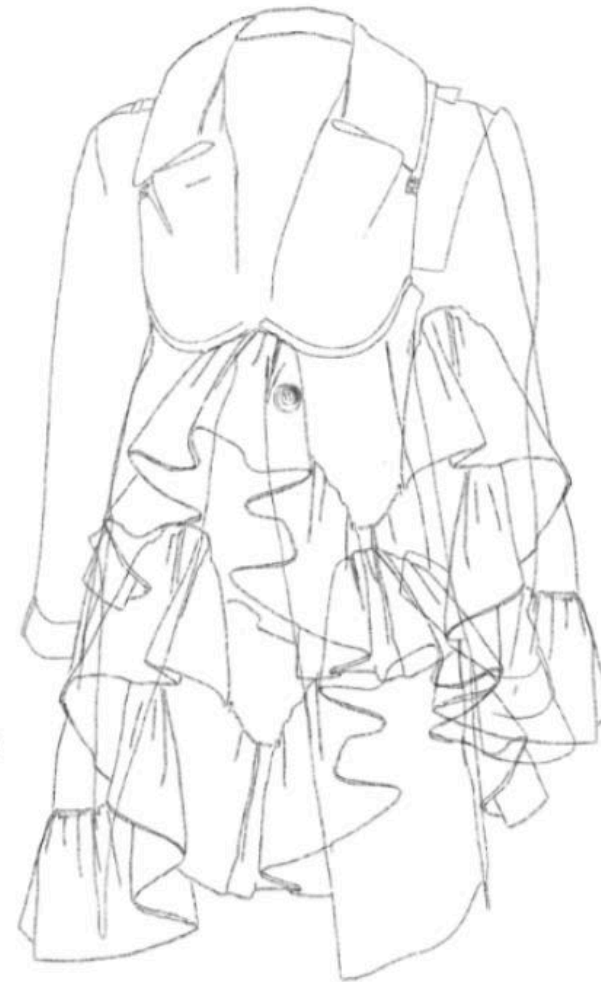
*purple  
pleats sample  
w/ tulle*



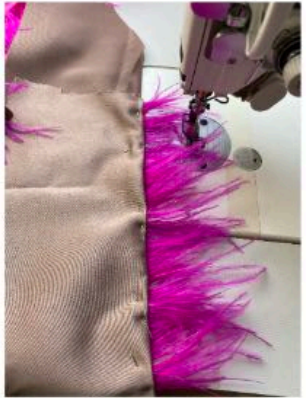
IMG\_6810.JPG



IMG\_6811.JPG



*embroid  
stitching*



*SAMPLE  
→ trap feather  
trim into capel*



*wrinkle  
zip -*

*← alternatively  
side zip  
more practical*



