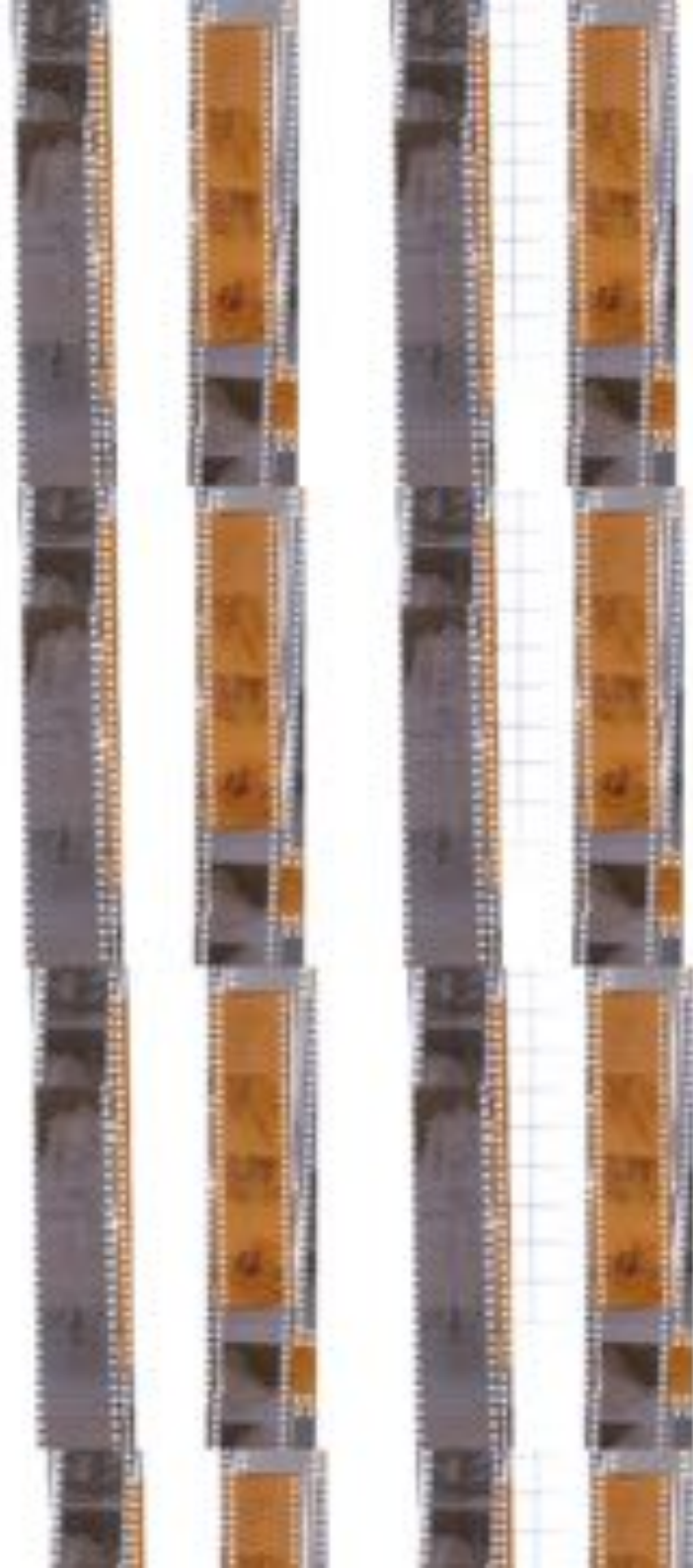


Jess Barker  
Manchester Fashion Institute  
Manchester Metropolitan University

A dystopian situation where the government, desperate for control launches Artificial Intelligence. What citizens see is monitored and controlled pushing people to the brink, encouraging a world of illegal arts. This forces creatives into escapism to remove themselves from the computer generated reality they've been forced into. The UK is already heavily surveilled but what if the government started using it against the public? How could garments be developed to protect people's identity.

My design work is heavily inspired by technical menswear focusing on the functionality of the garments. I enjoy exploring a garment and pushing it to its most functional form.





I FOUGHT THE

LET US

LET US

LET US

LET US



Sheffield Graffiti Kingdom



Brooding & Poppo Allister  
- Operation Jurassic





Marc Vallée photography



**THE KITCHEN**  
The Kitchen is a black and white photograph of a person in a kitchen. The person is wearing a hat and a jacket, and is looking down at something in their hands. The background shows a kitchen with various items on the counter.



© 2001 Marc Vallée  
All rights reserved.

Skinner Knits

Brixton, 1981



ALL COPS ARE BASTARDS

ALL COPS ARE BASTARDS

ALL COPS ARE BASTARDS

ALL COPS ARE BASTARDS





Research Garment  
Extreme weather wear



Masks of War



HAHAKISHI



Custom War  
Equipment



have  
Anti-heat  
resistance

7  
Shima War

the  
best  
way  
to  
go

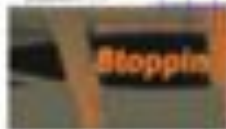


styling generic garments





# Shima Knit







add the  
black belt  
to the  
jumpsuit

add  
the  
yellow  
patch  
to the  
jumpsuit

add  
the  
black  
belt  
to  
the  
jumpsuit



add  
the  
black  
belt  
to  
the  
jumpsuit



add  
the  
black  
belt  
to  
the  
jumpsuit

add  
the  
black  
belt  
to  
the  
jumpsuit

add  
the  
black  
belt  
to  
the  
jumpsuit

add  
the  
black  
belt  
to  
the  
jumpsuit





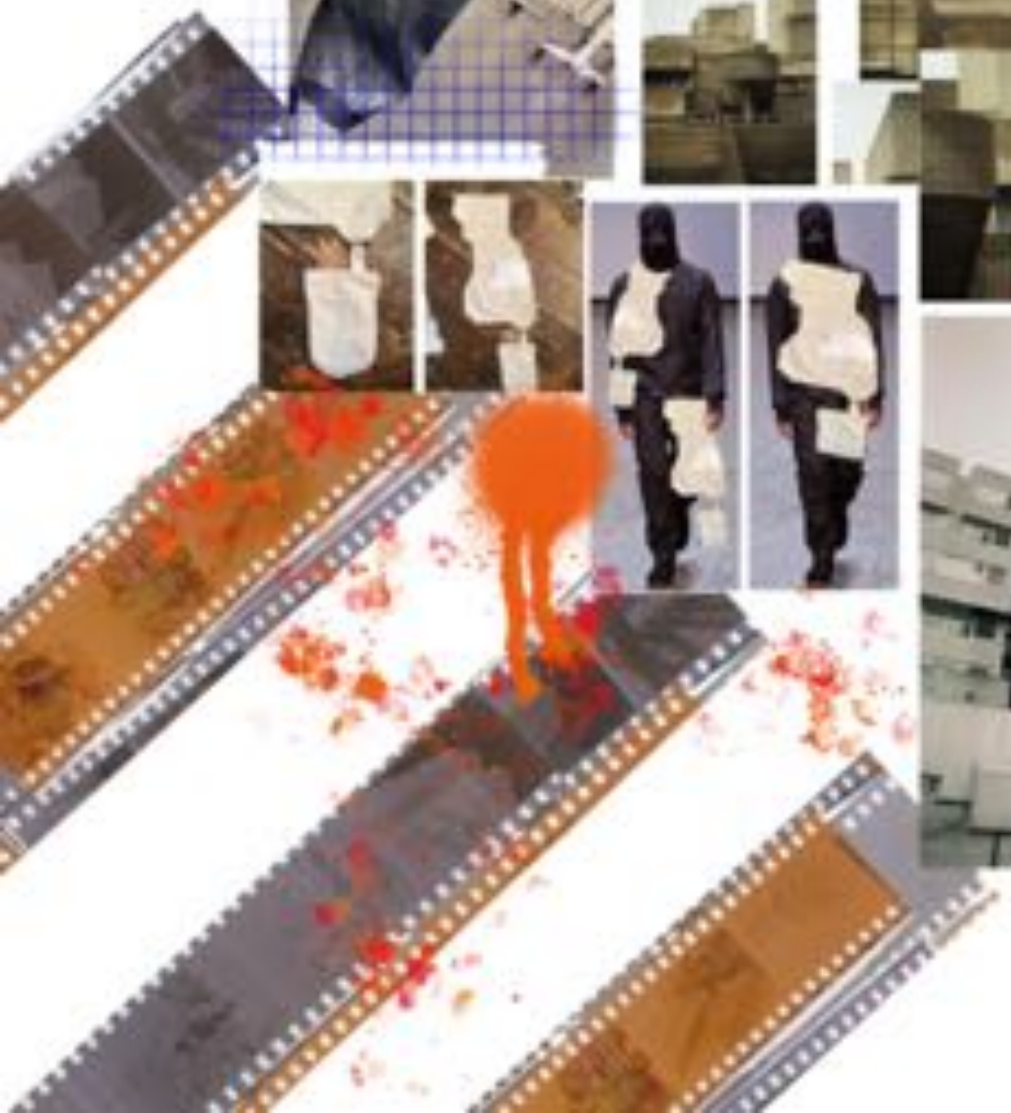
one photo of  
building  
on wall in  
jail



OUTFIT IDEA



↑ spray paint  
samples.











Outfit one



AUDIENCE IS SUICIDE





OUTFIT 1













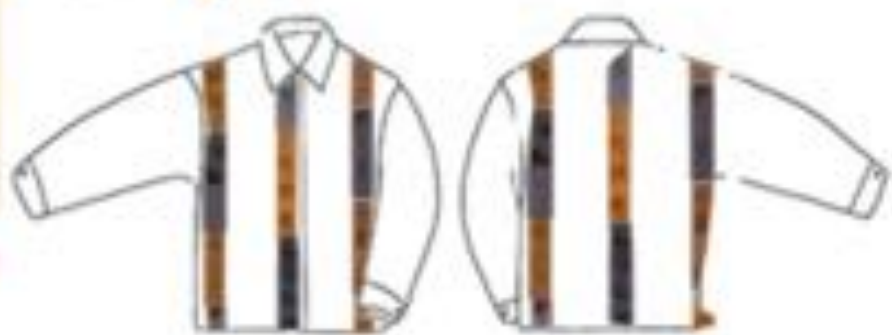
*Hood Variations.*





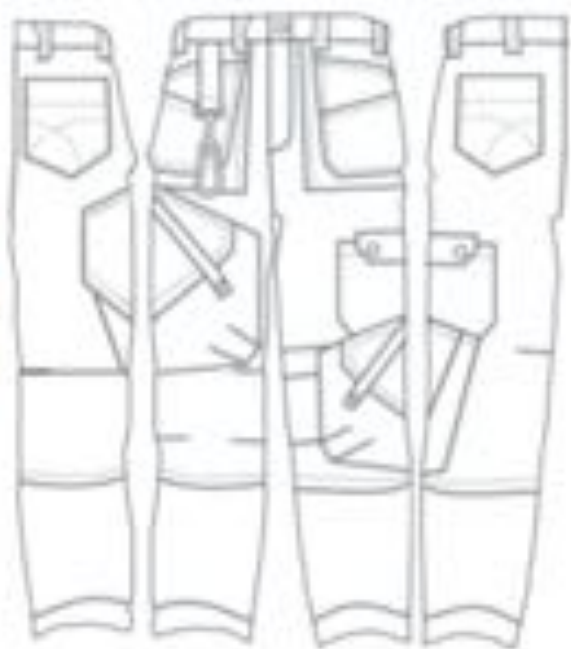




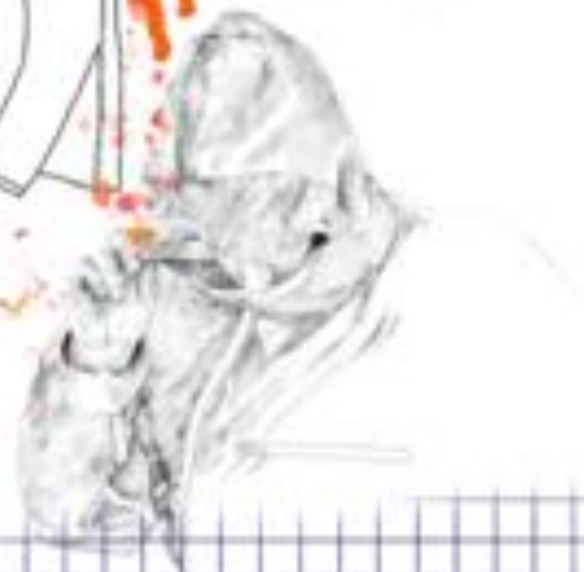




# OUTFIT 1



















1. Kapsa boczna  
4. kieszeń na 1



1. kiesz. boczna



2. kiesz. boczna z 2 kiesz. w środku



2. kiesz. boczna









