

Jessica Dodds

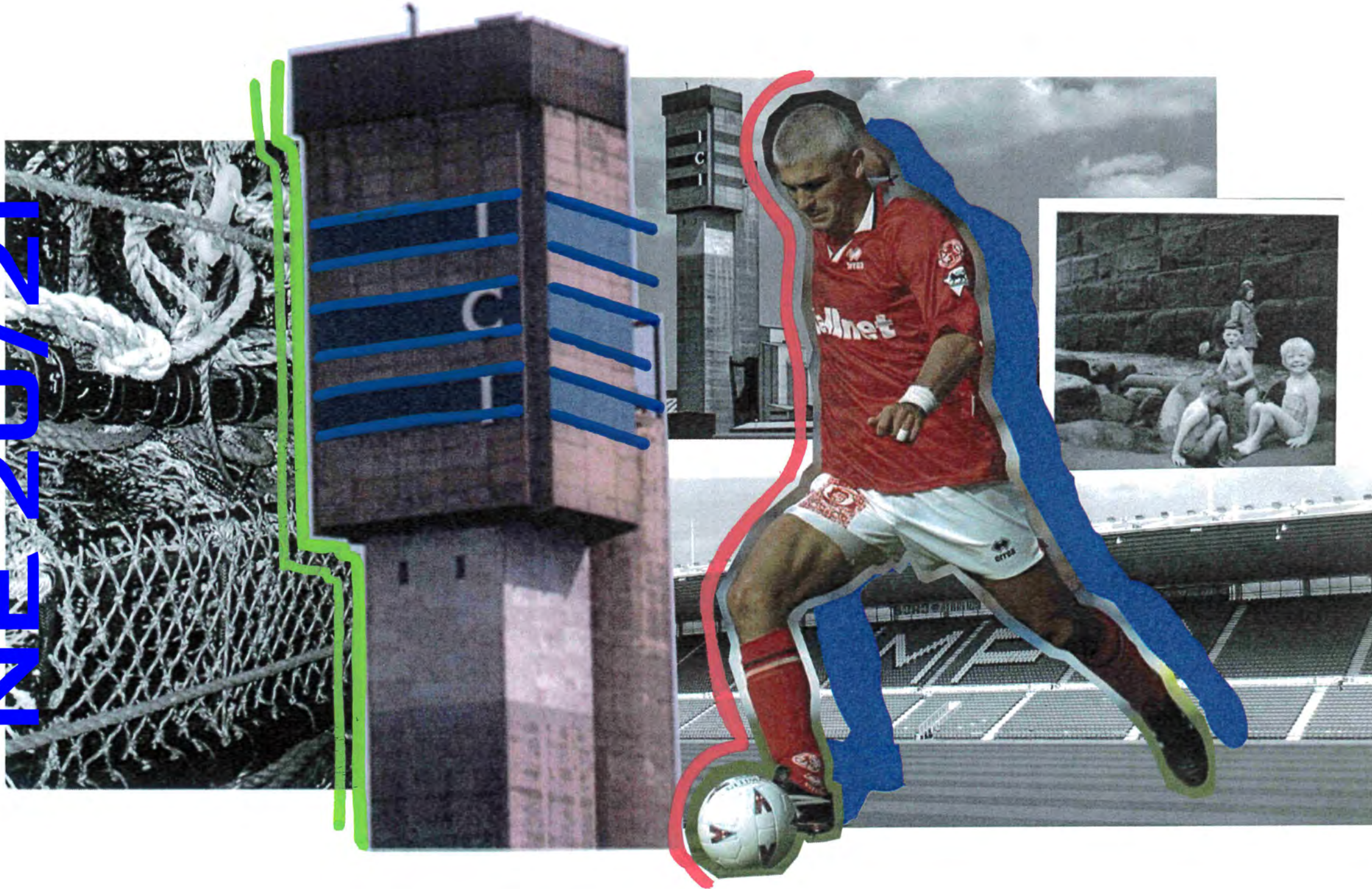
Manchester Metropolitan University

Menswear/Knitwear/Sportswear



Email - jess.dodds@btinternet.com

NE 20/21

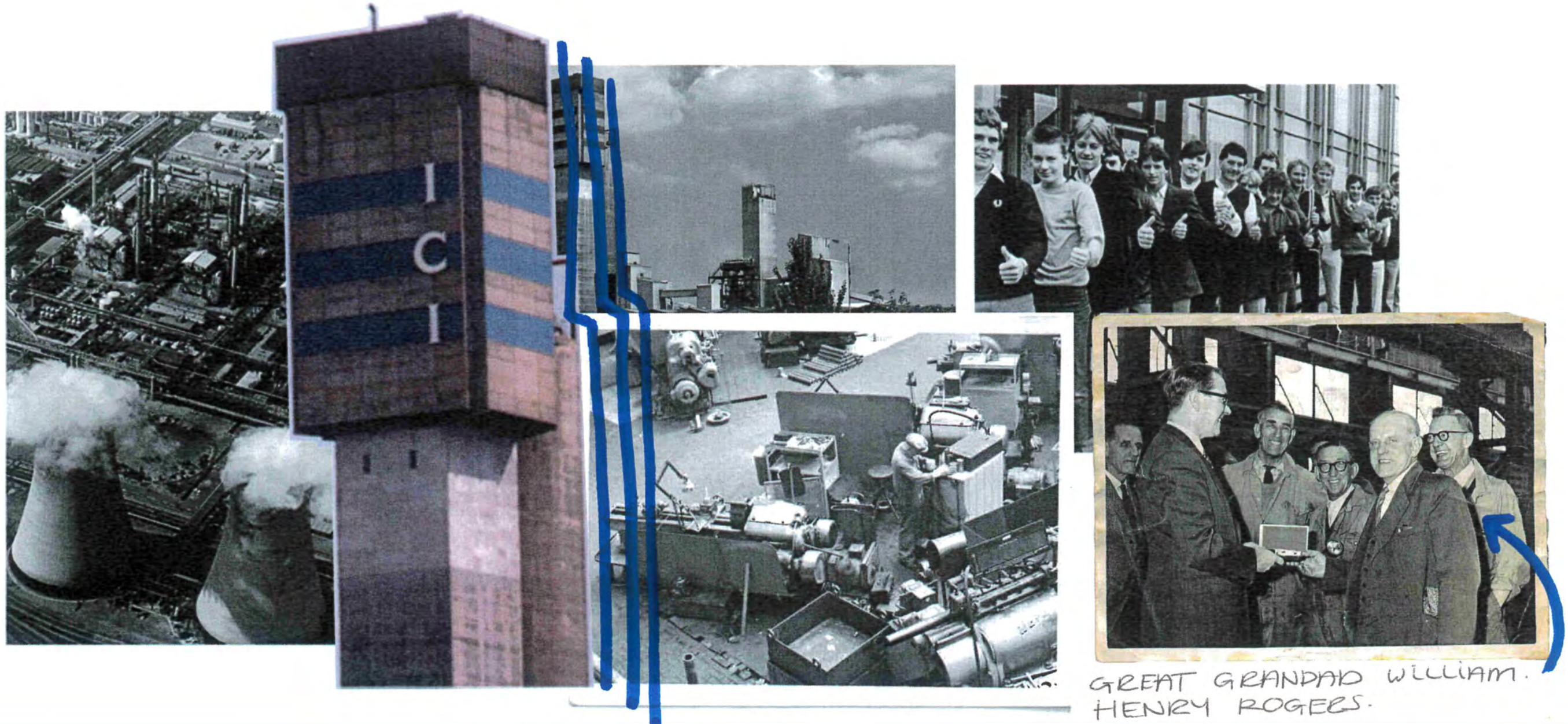


ICI BILLINGHAM.

MIDDLESBROUGH FOOTBALL CLUB.

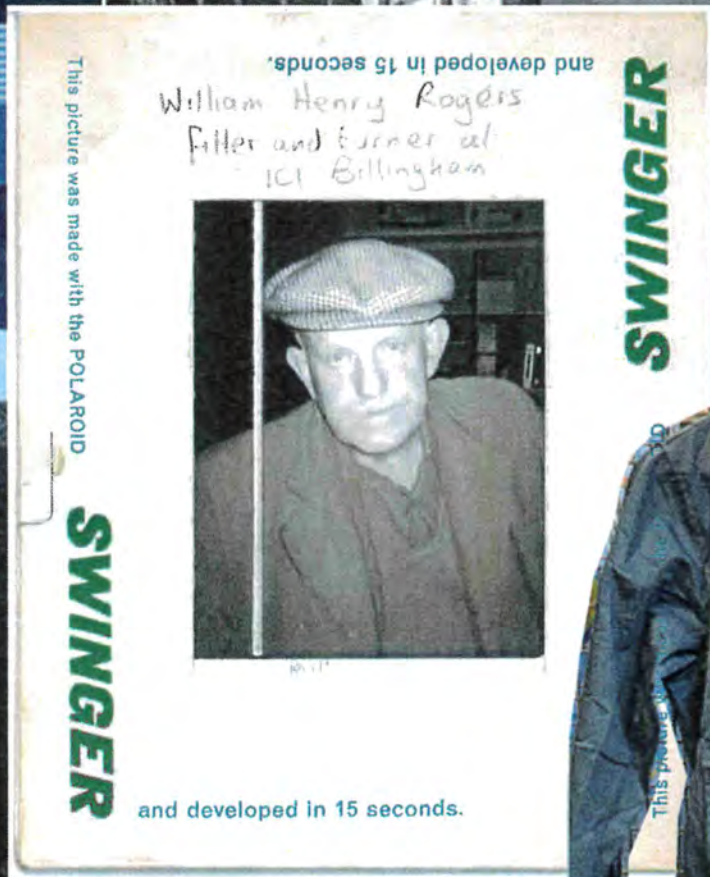
WHITBY.

THREE PLACES IN NORTH EAST ENGLAND, THAT HOLD UNKNOWN STORIES CREATED BY GENERATIONS OF MY FAMILY.

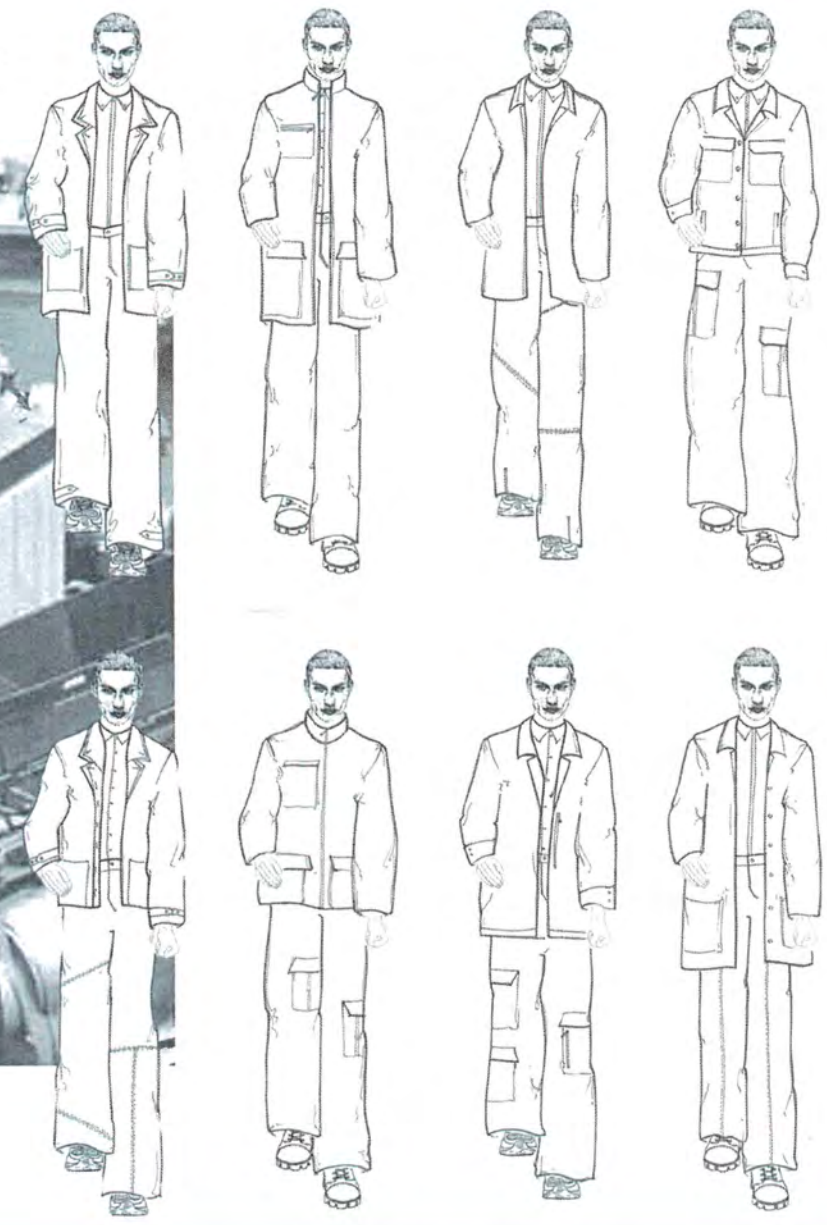
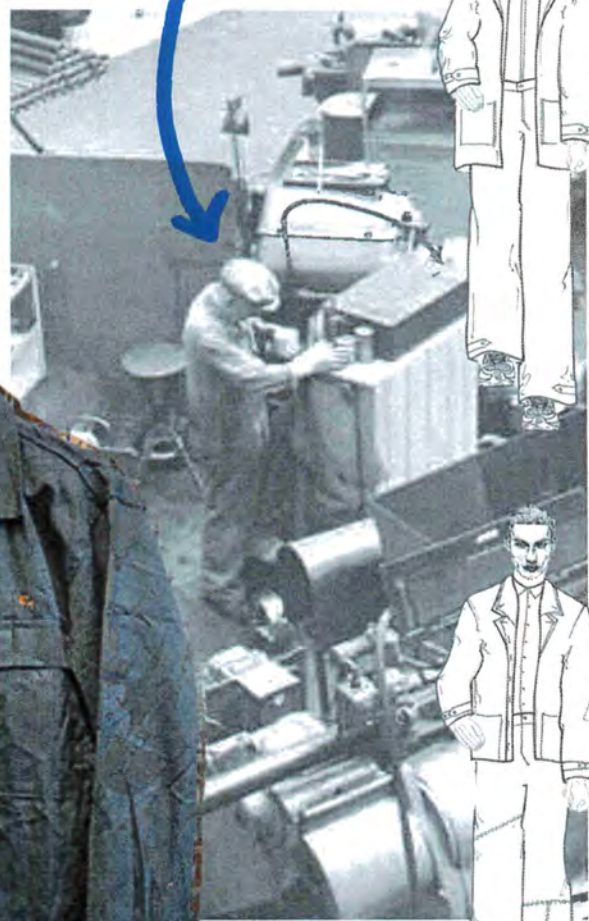


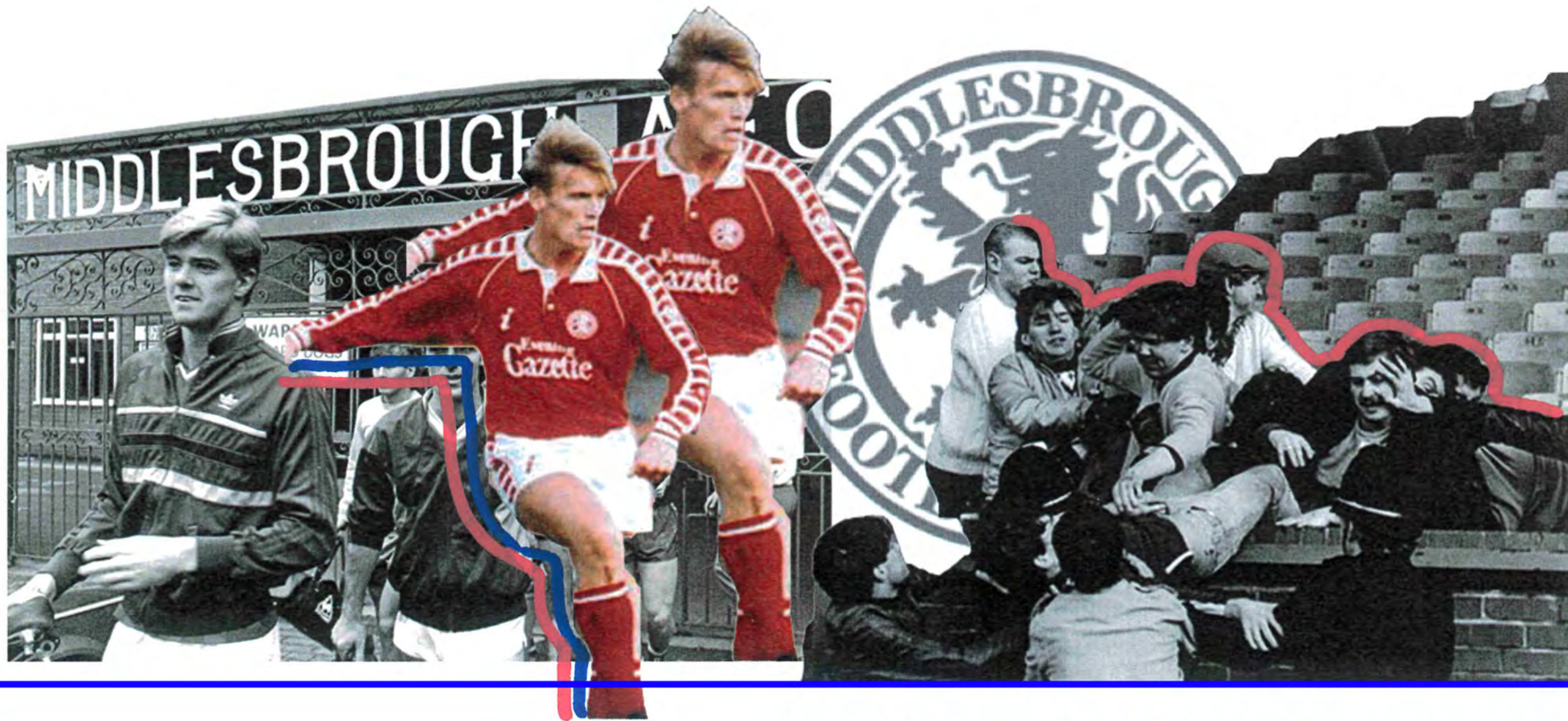
GREAT GRANDDAD WILLIAM.
HENRY ROGERS.

54.5888° N, -1.2903° W ICI Billingham

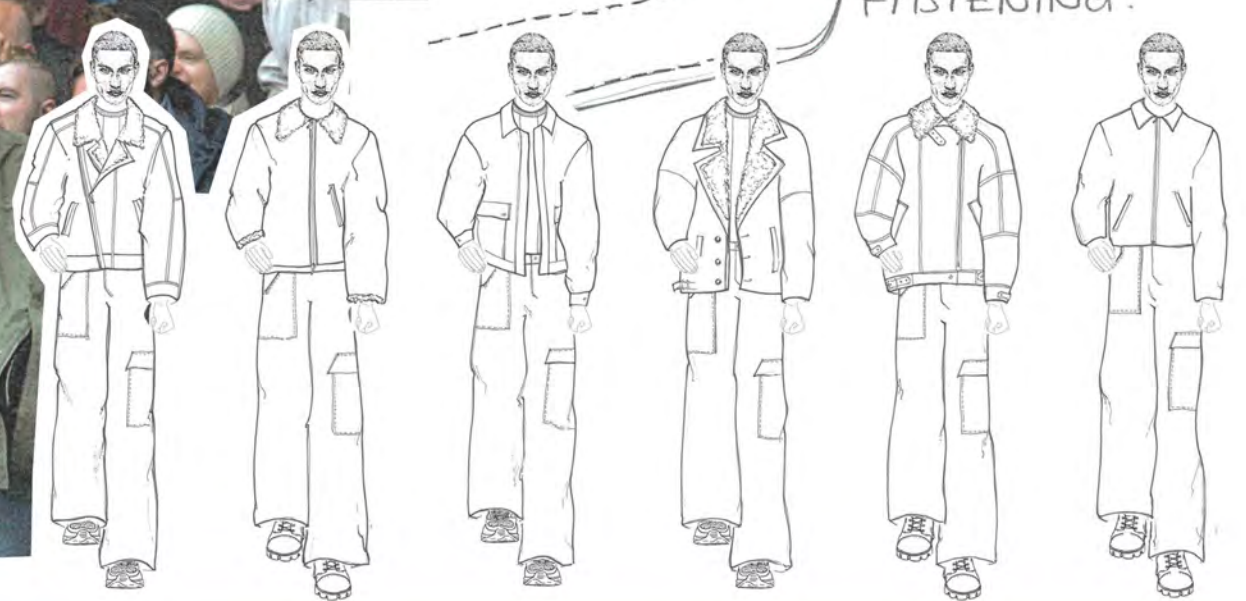
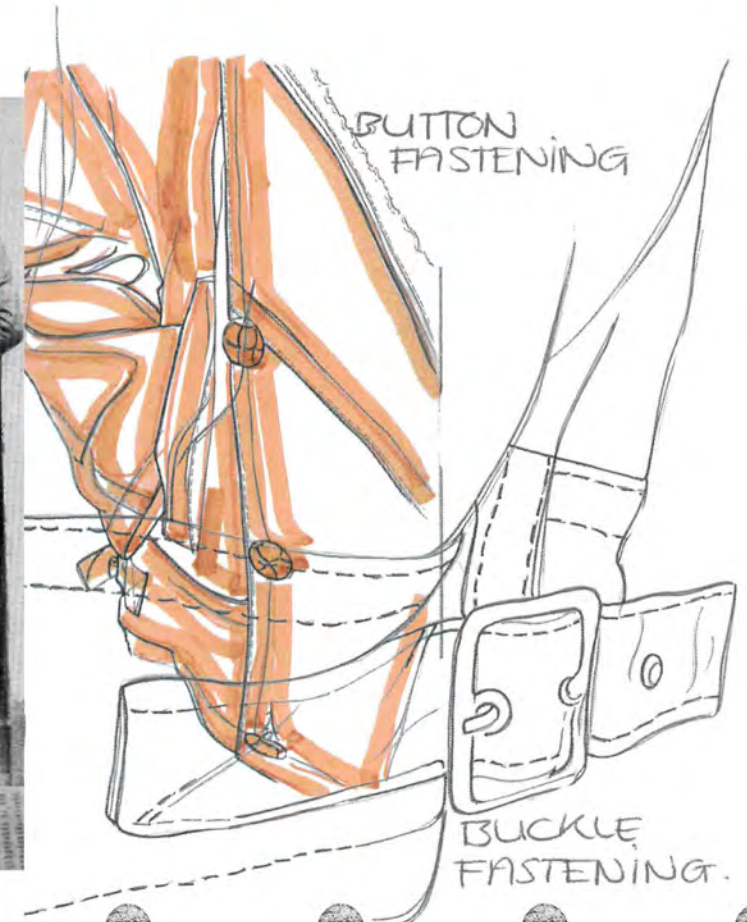


GREAT GRANDAD
BILL @ WORK.





54.5762° N, -1.2348° W Middlesbrough Football Club





WHITBY LIFE BOAT



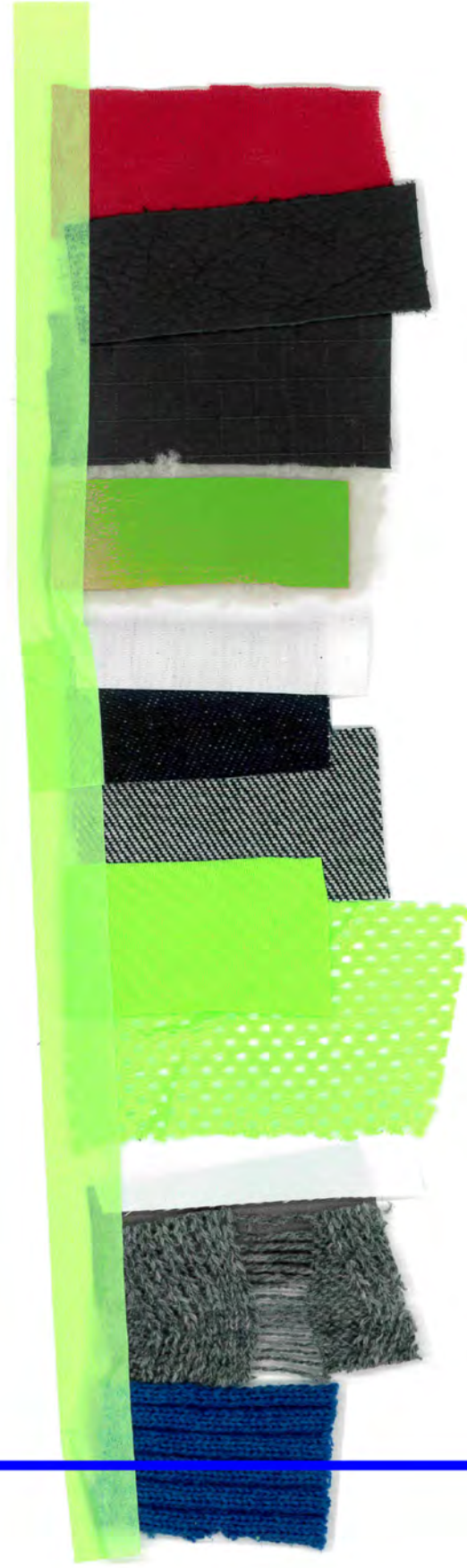
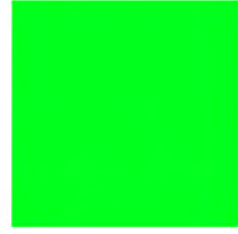
MY GREAT GRANDMA EVA,
GRANDMA & GREAT
GRANDAD BILL.



MY GREAT GRANDMA
EVA & HER FRIENDS.

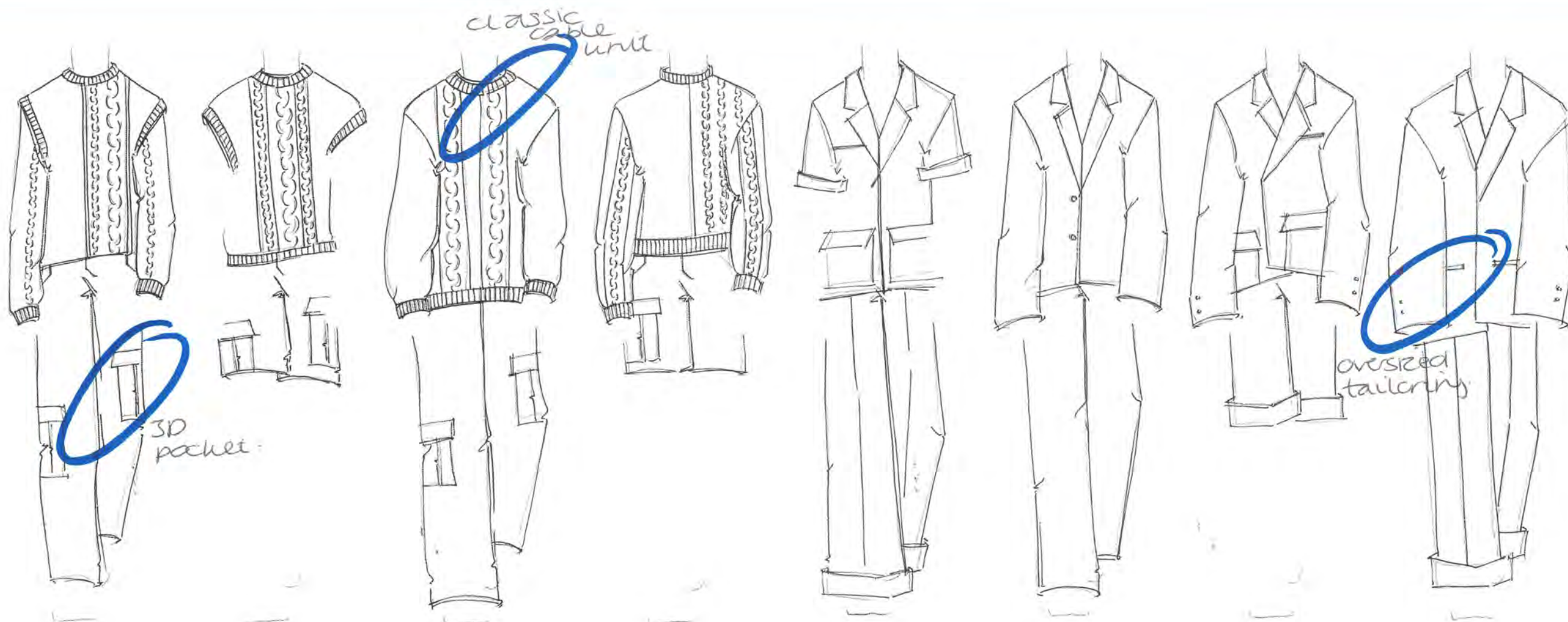
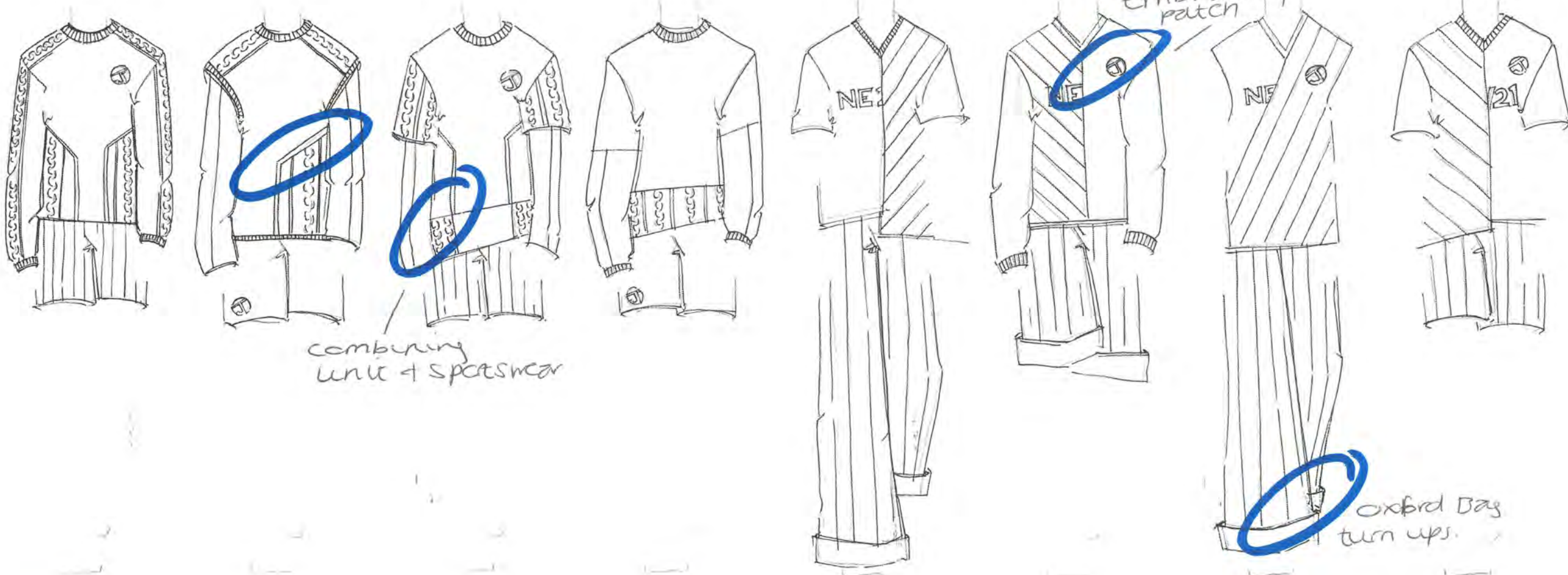






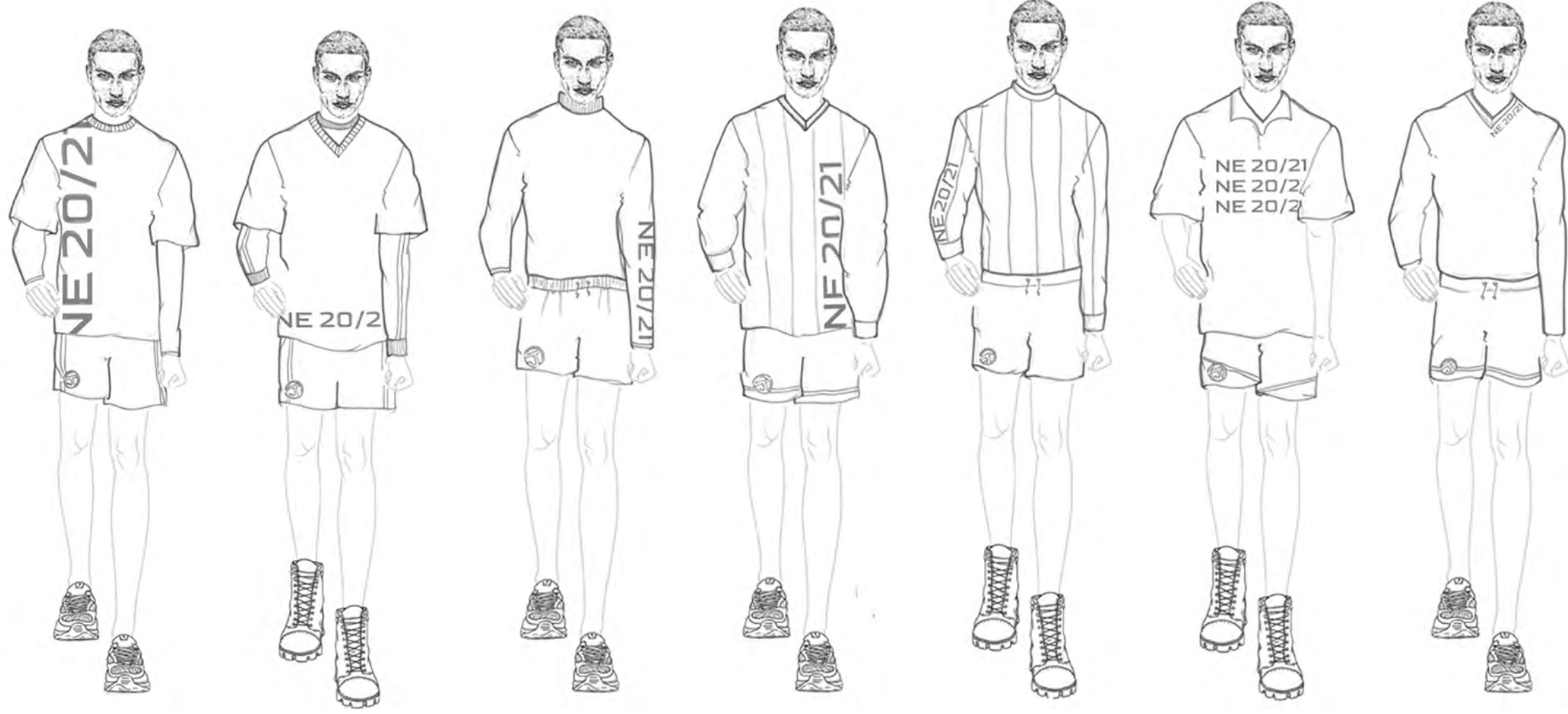


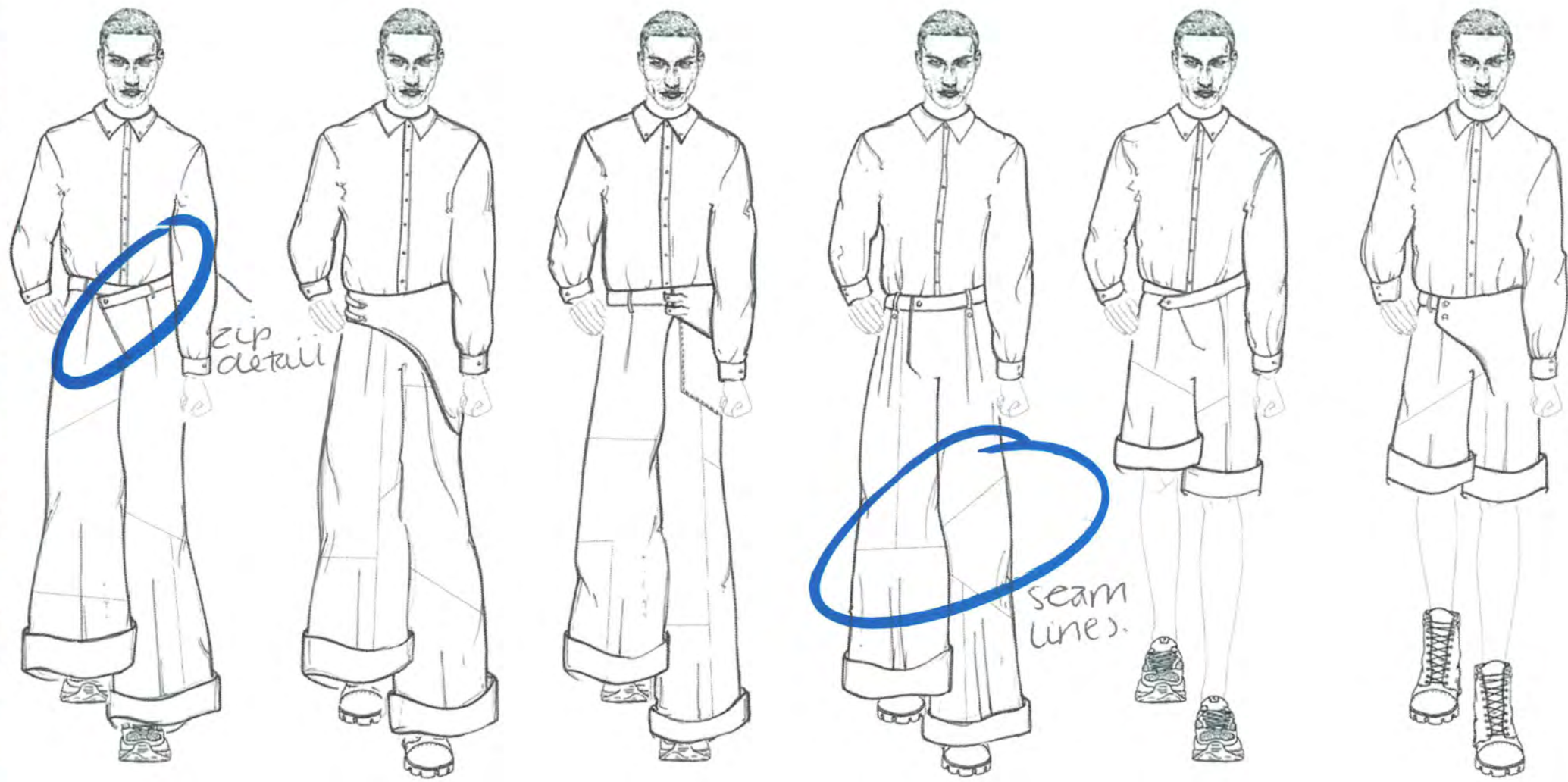
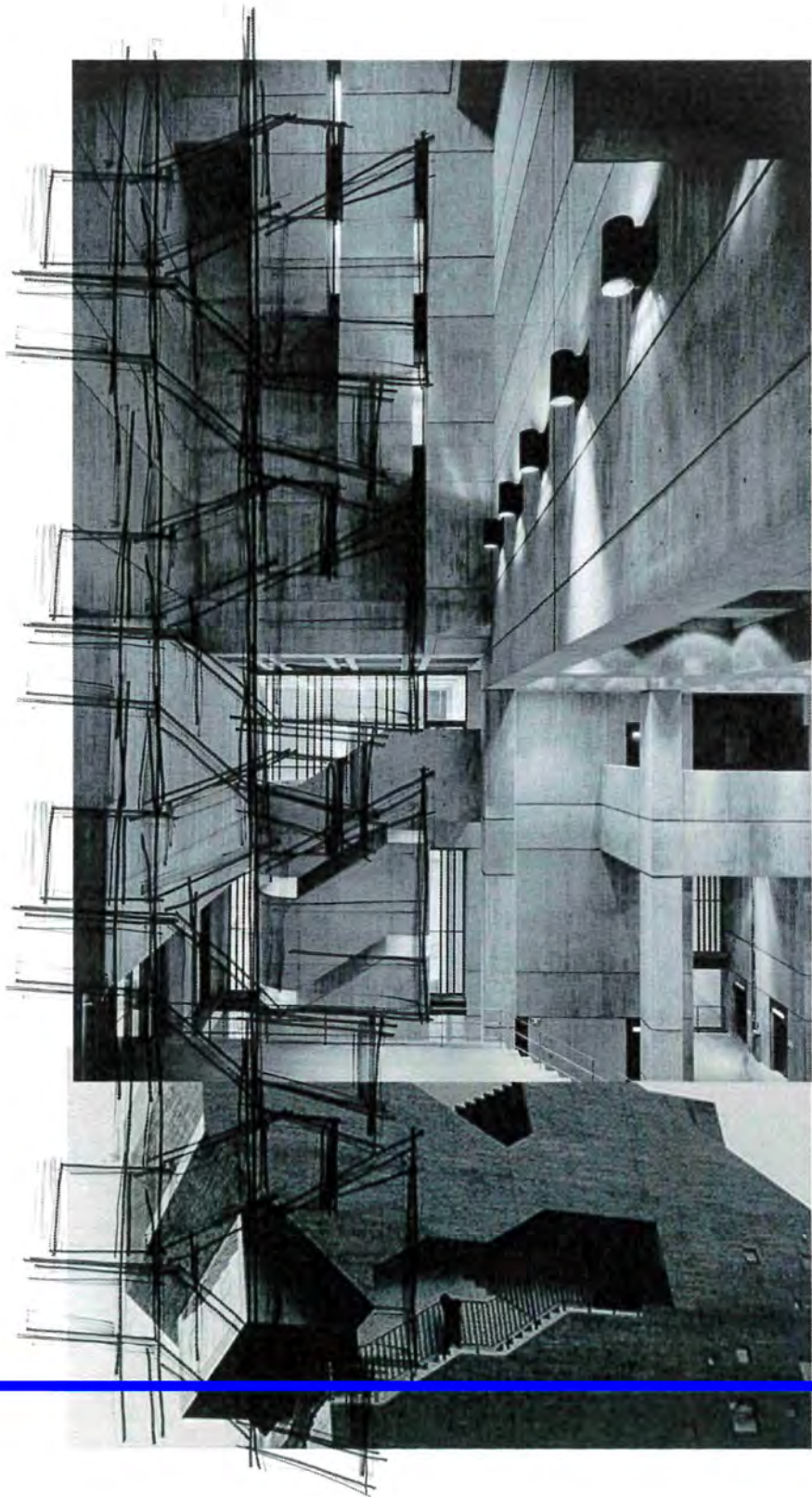
Using generic garments to create silhouettes to design from.



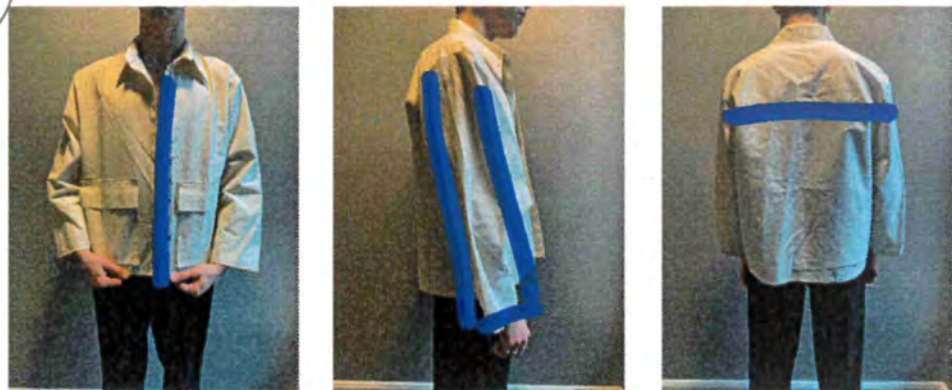
BORRO/ICI /AWHITBY

NE 20/21





1.



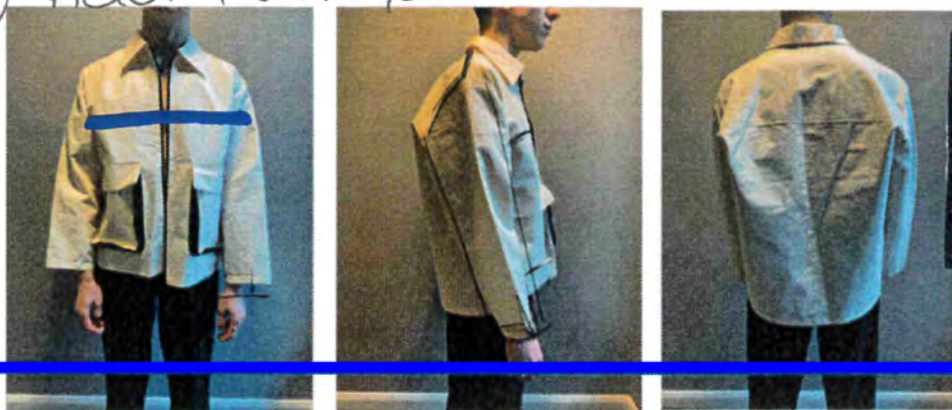
no button stand.

2.



Add 3D pocket. & back centre seam.

3.

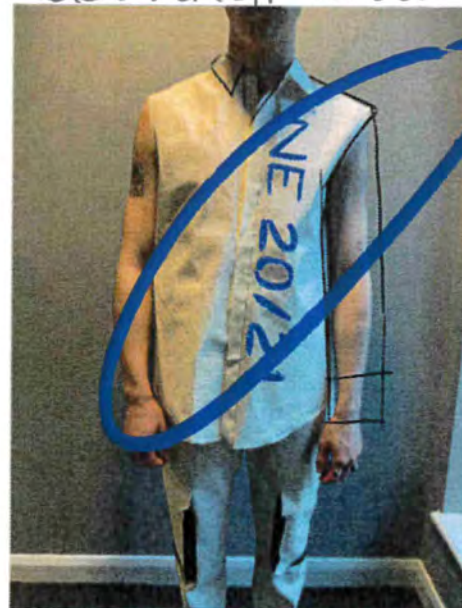


Add front yoke.





Add vinyl writing.



12/02/21





First working line up

2



1

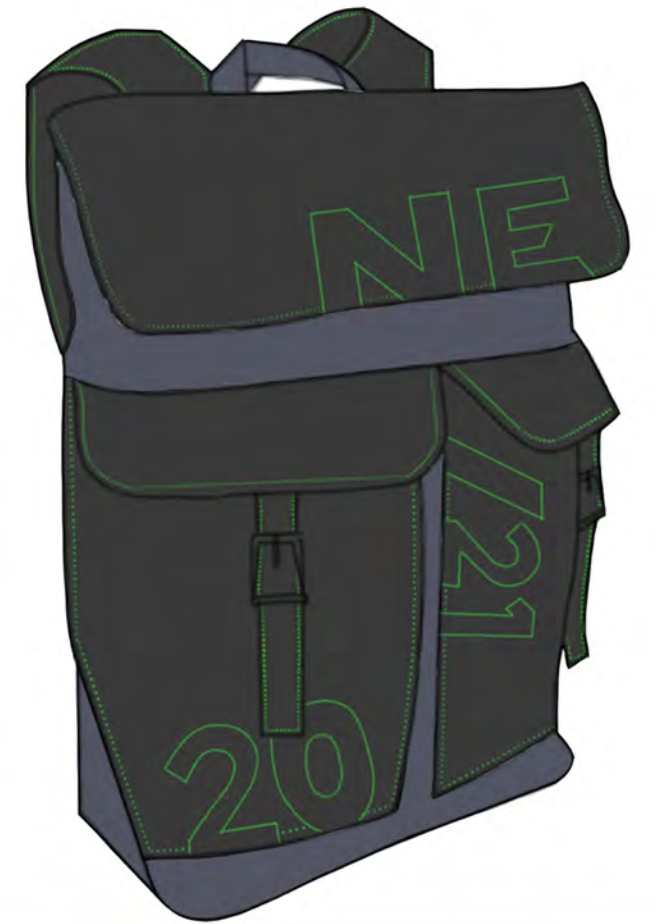
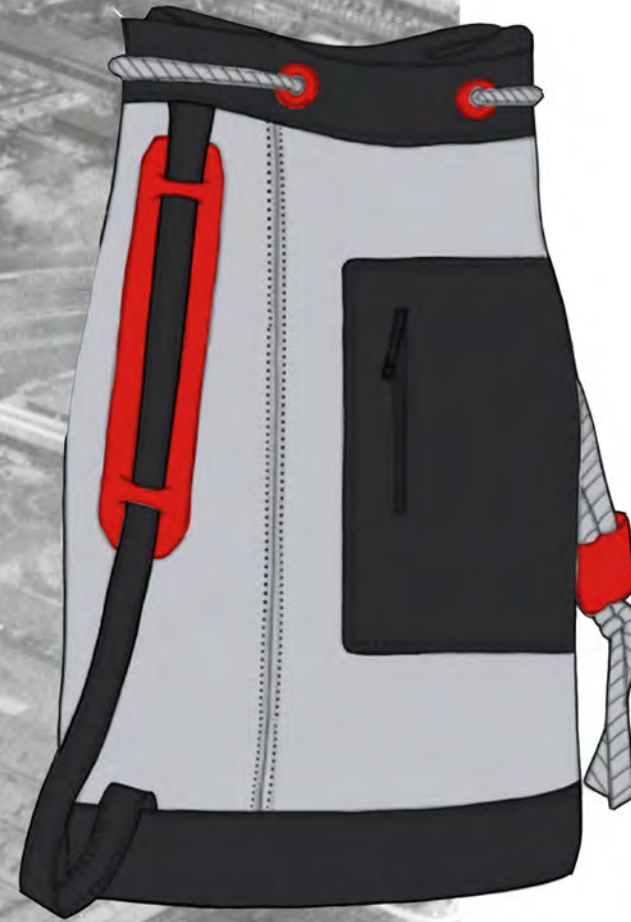
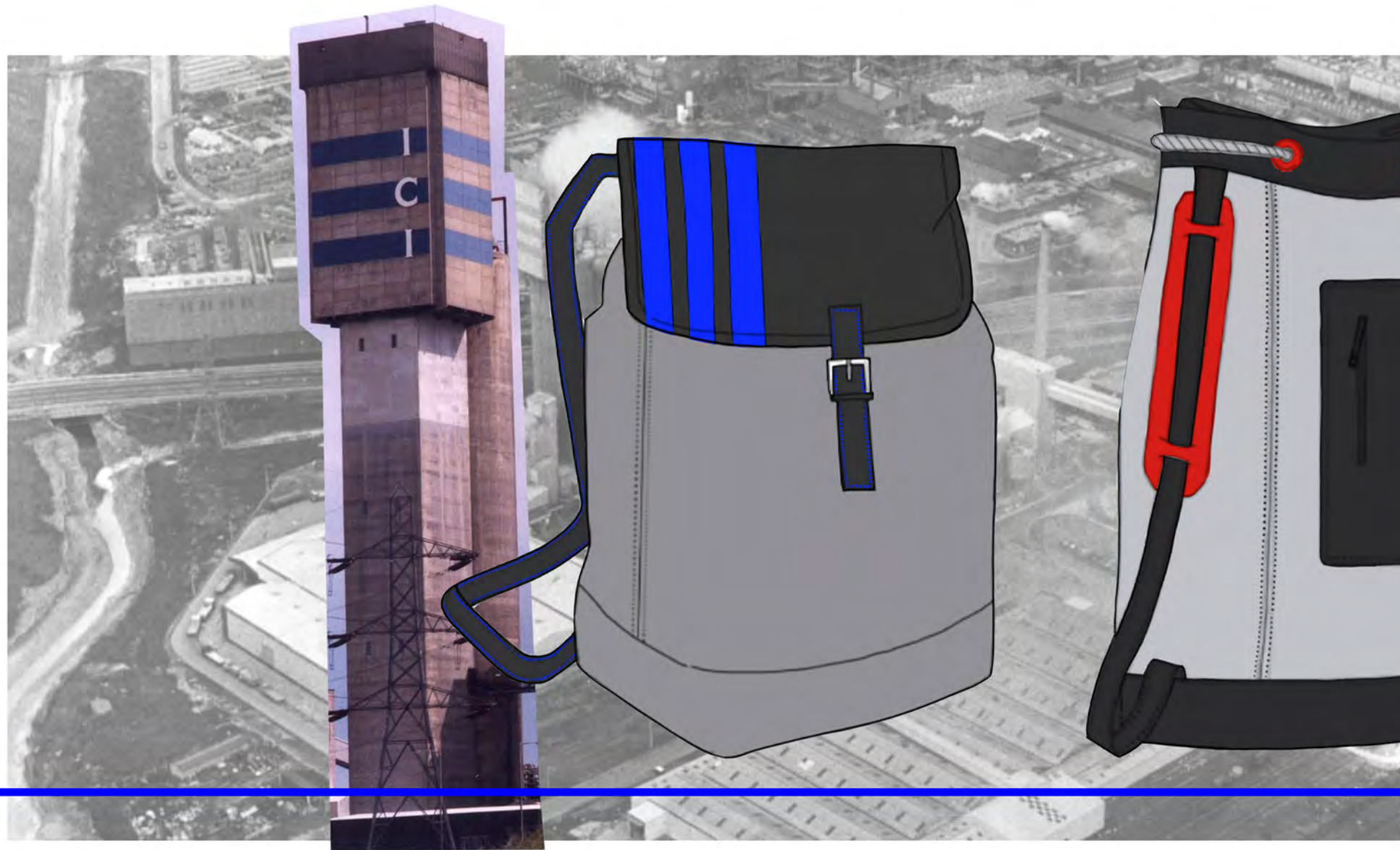


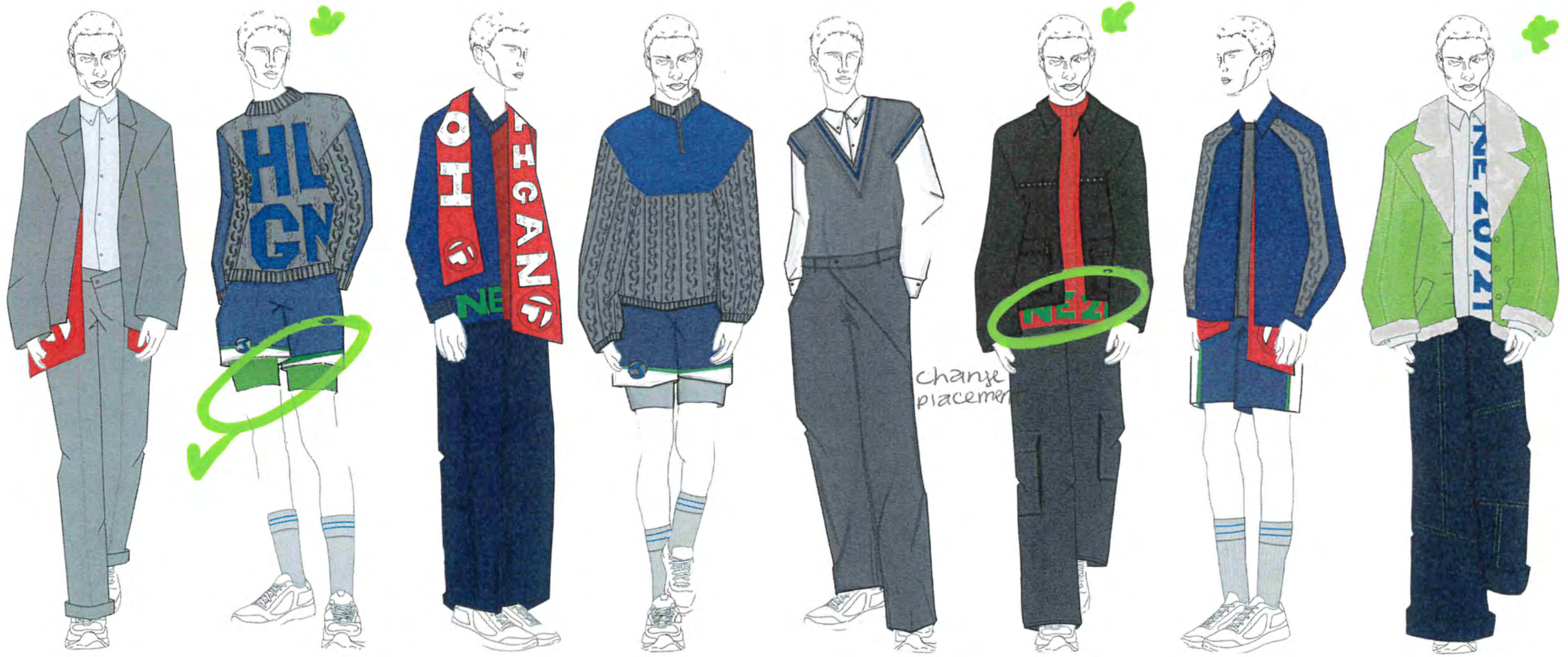
Add back pockets.



NO 21

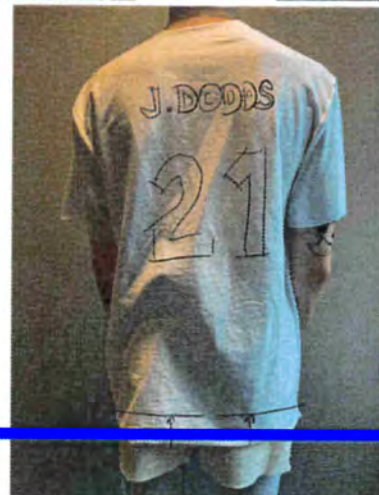
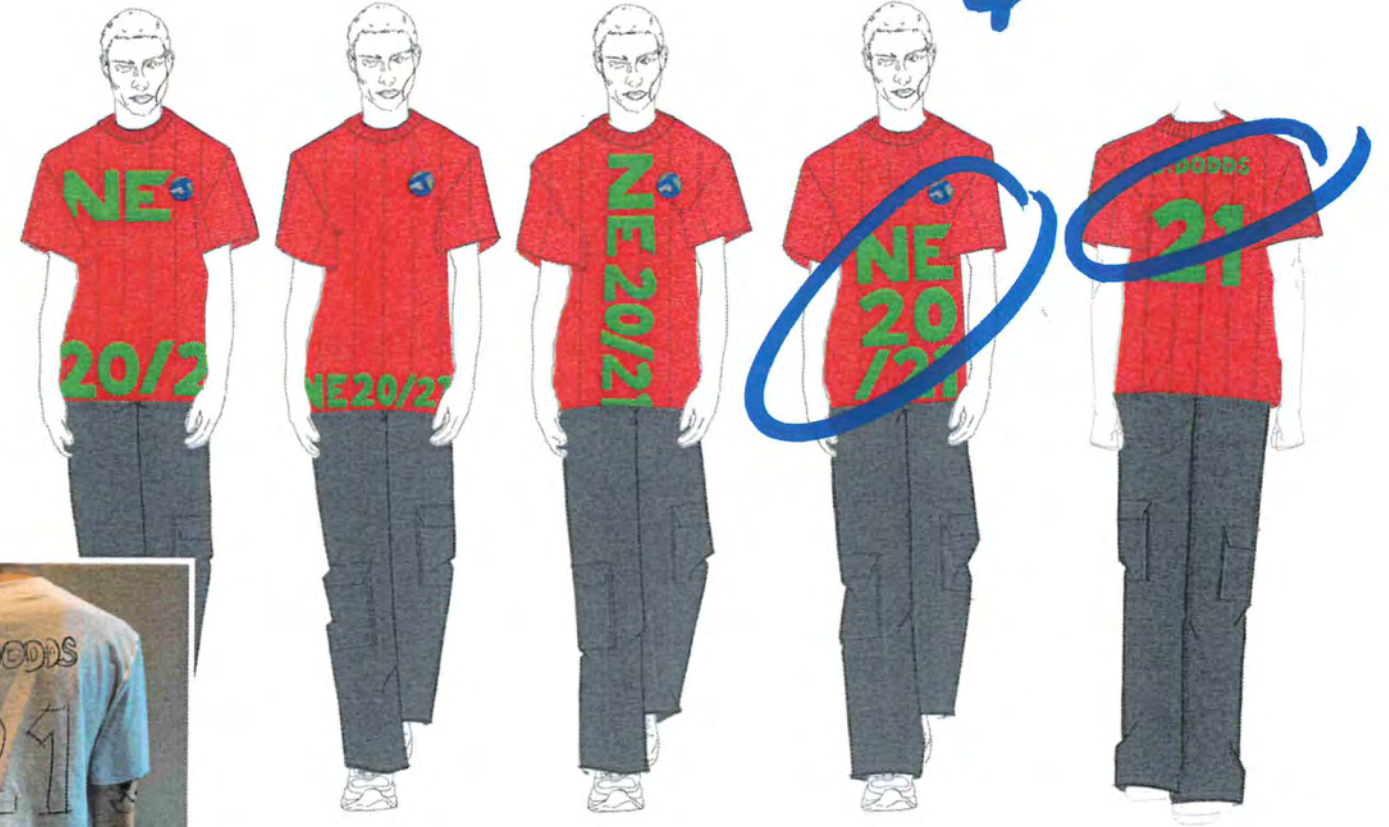




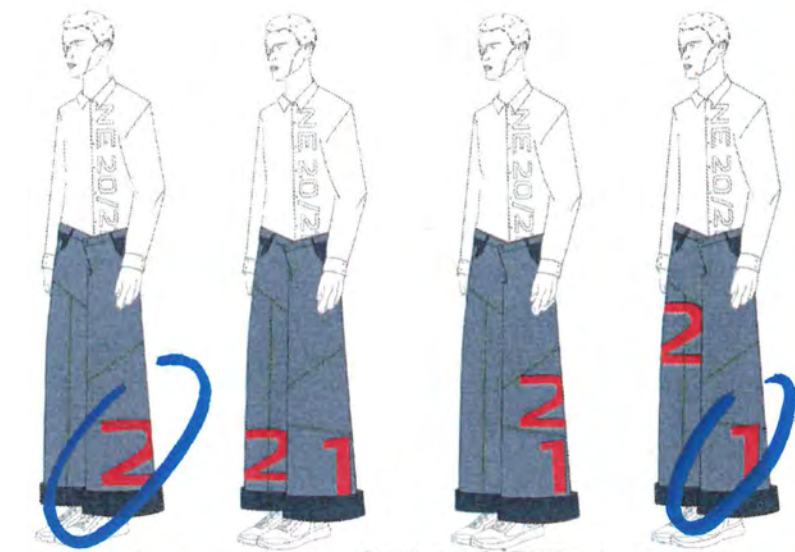


Second working line up

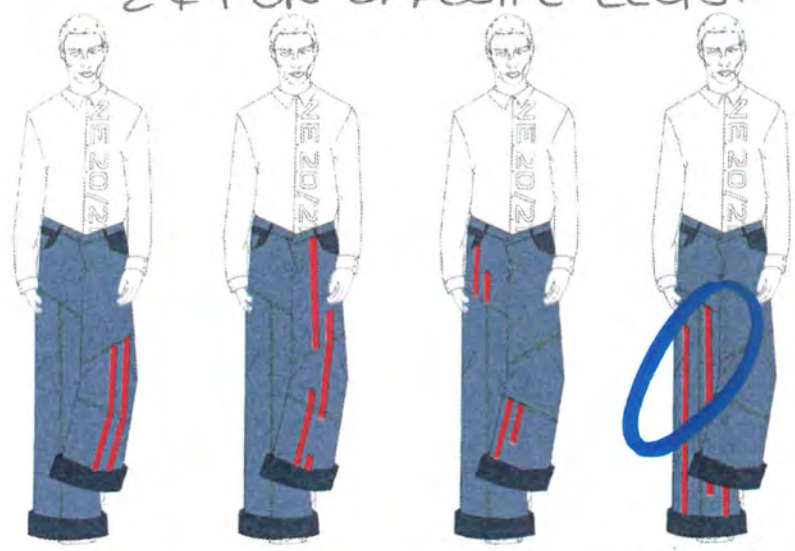
Middlesbrough Football club
uit.



change placement.

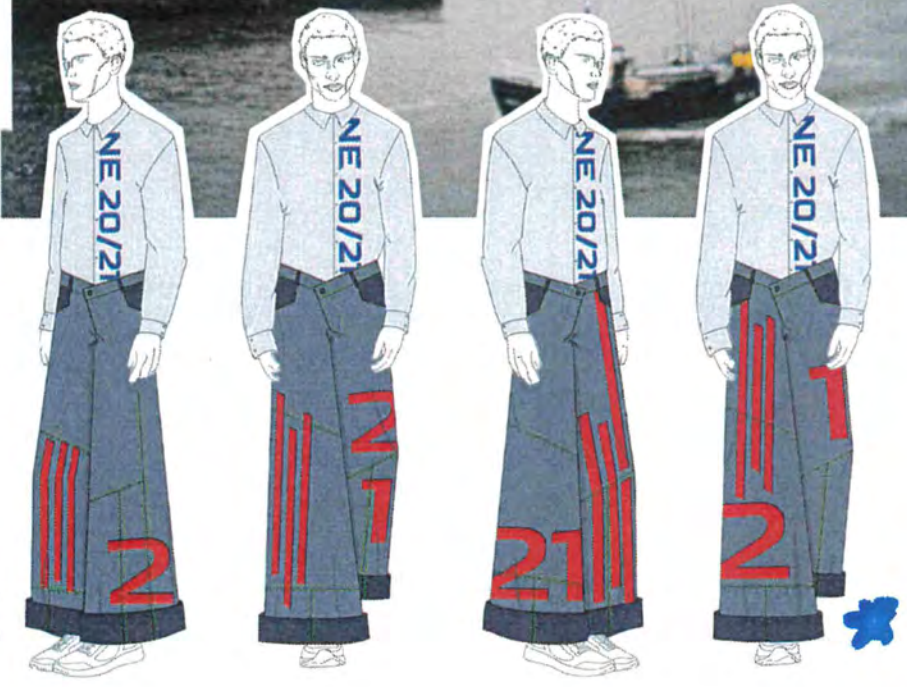
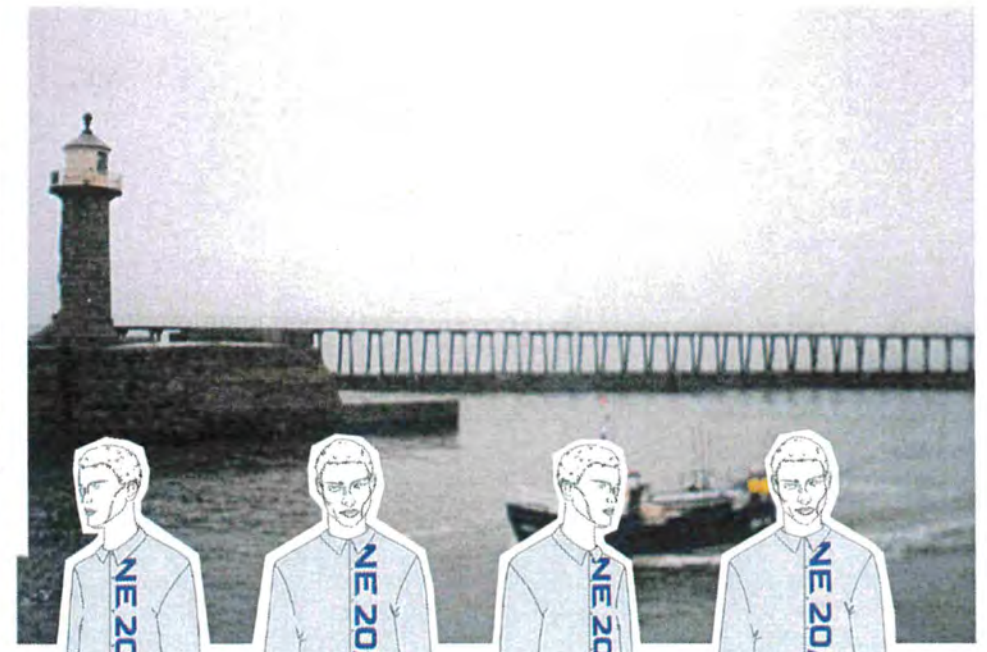


2 + 1 ON OPPOSITE LEGS.



3 STRIPES ON RIGHT LEG

MY MUM + UNCLE CARL + ANDREW.



1



in large lapel.



cover shoulder 2



sheepsuit toile 3.



seam detail.

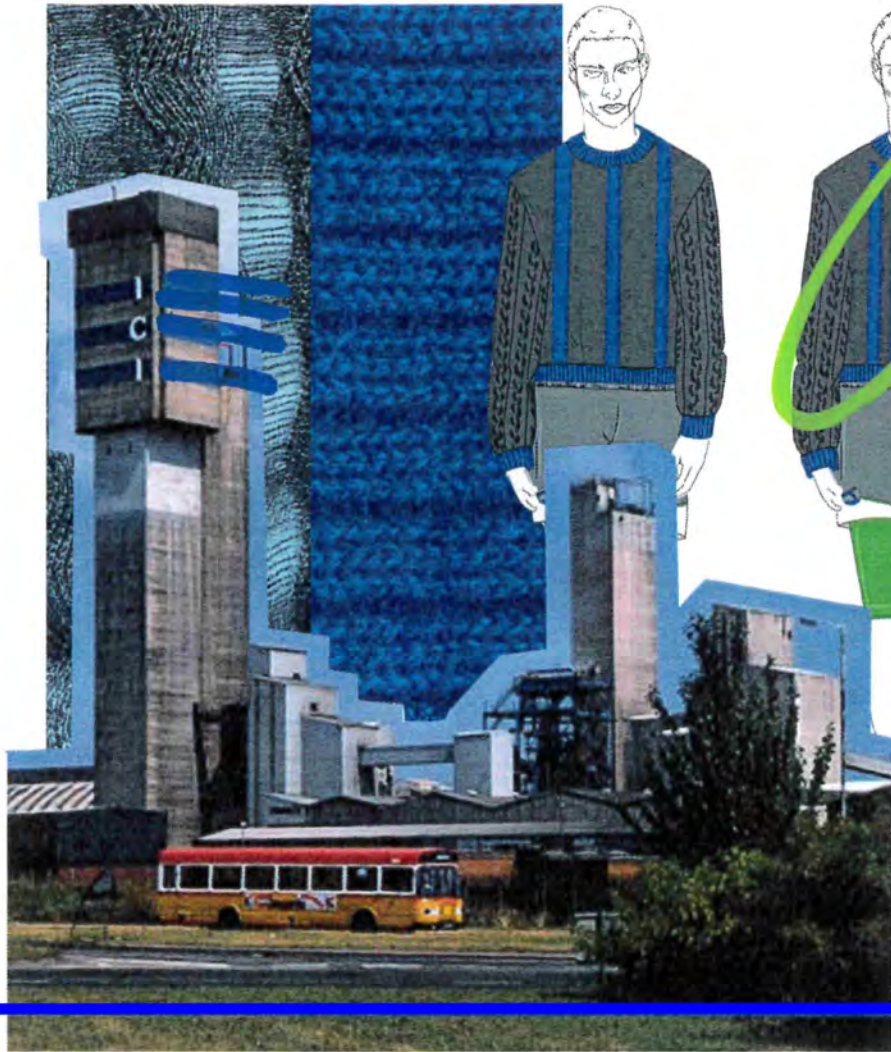


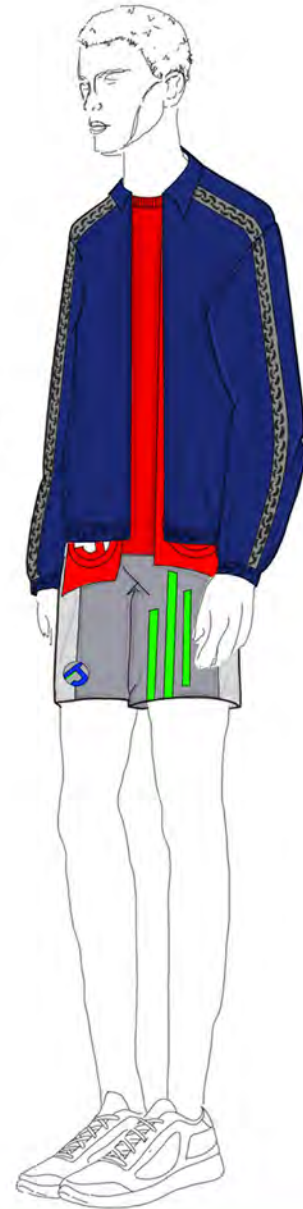
bring up hem.



increase pocket size.

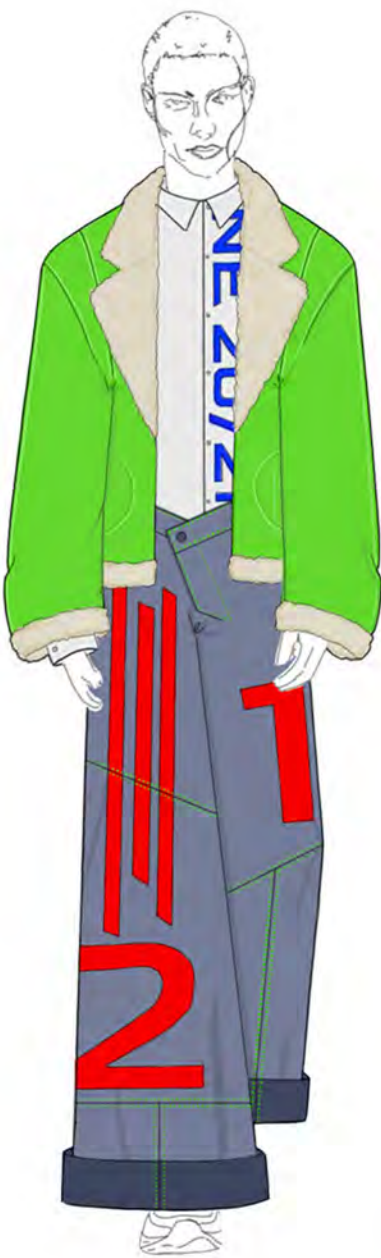
sleeve unit & rib.







Bag two design and final outcome



NE 20/21

JESSICA EVA DODDSS



NE 20/21 LOOKBOOK
PHOTOGRAPHY - JESSICA DODDSS
THREE LOOKS MADE BY JESSICA DODDSS







