



LUCY GREEN COLLECTION

A Dance with a dog



Florida State University  
 Department of Art and Design, Fall Semester 2010  
 This submission was for showing the world  
 that the love is all the center of our universe.

Love is a stranger - Melanie Manchot



My dog says



Favorite Stamp





NO  
DOGS





FRED ASTAIRE  
Dance silhouette  
Celebration  
Partnership









DAME BARBARA CARTLAND  
Constant dog under the arm



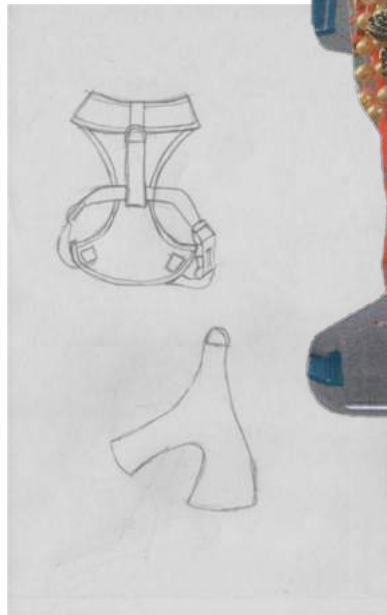




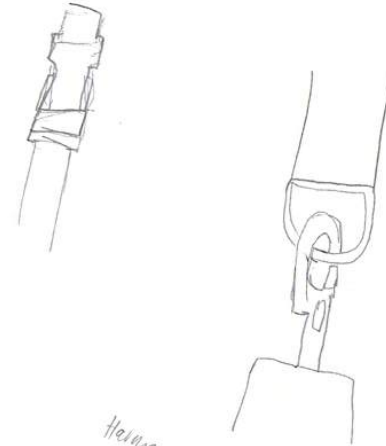








Dog harness knit



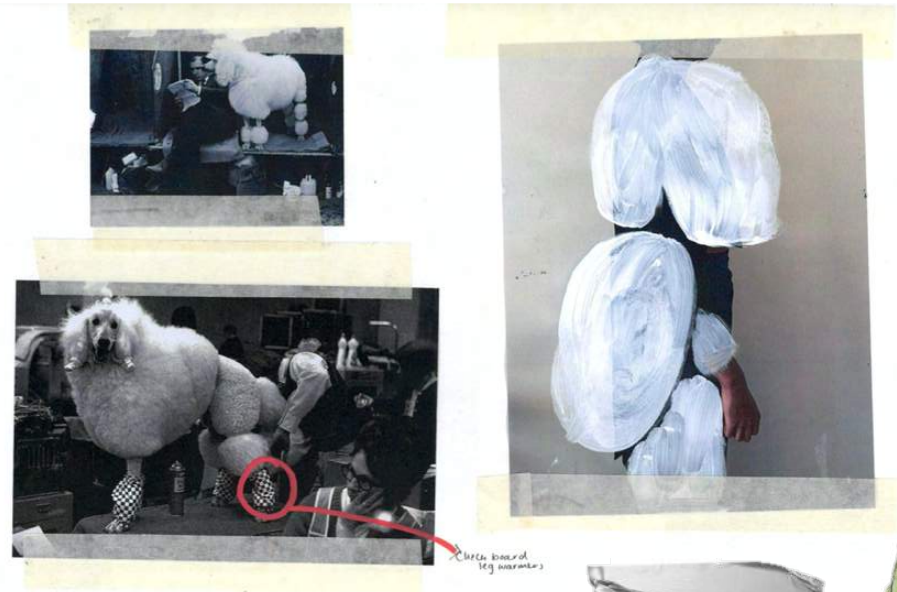
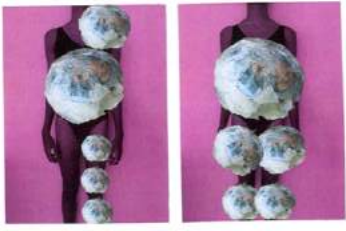
*Hemless fastening!*





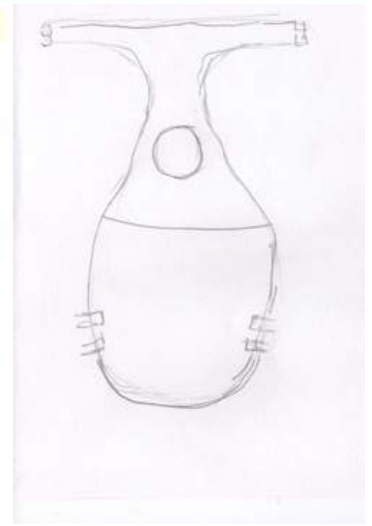


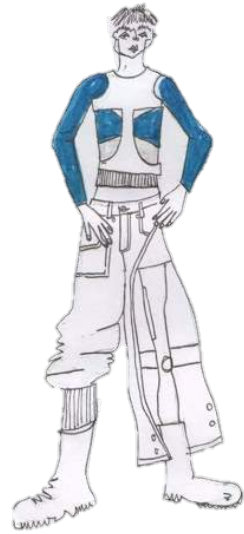
POODLE SILHOUETTE



*Poodle silhouette*  
- Disguises real silhouette of dog  
- Texture

*With board leg warmer*



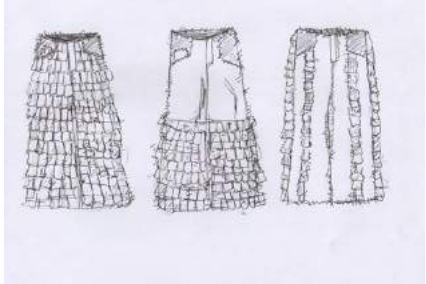


IMITATION OF POODLE- WIG





Looped + frayed denim

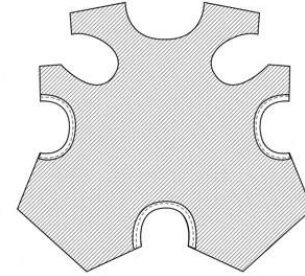
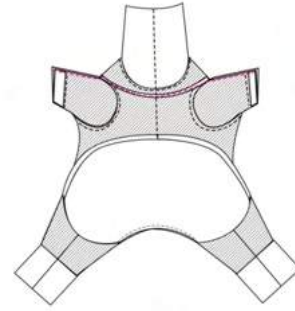
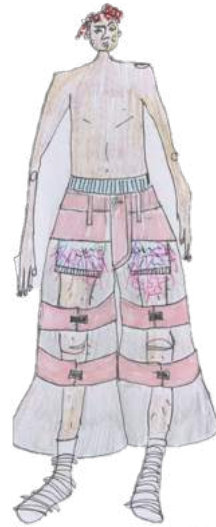


IMITATION OF POODLE- FRAYED DENIM





Dog coat trousers



USE OF DOG GARMENT ON HUMAN- GREYHOUND ONSIE







CRUFTS DOG COMPETITION





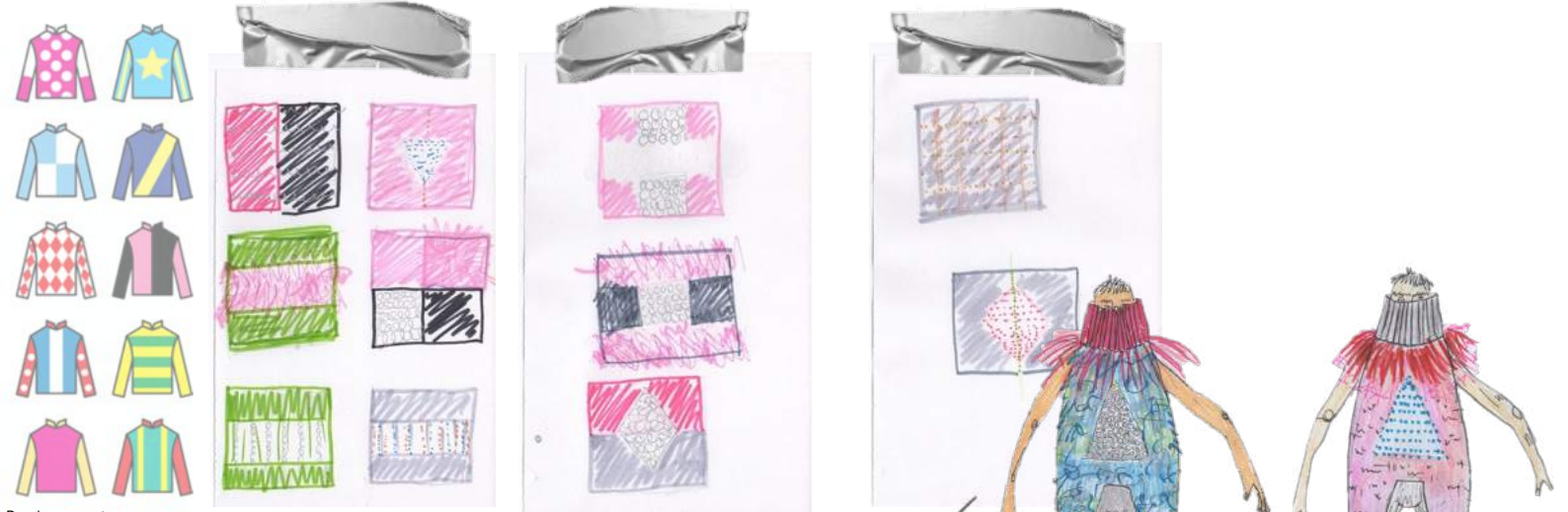








Greyhound silhouette-  
' Owners wearing dog' s jumper'



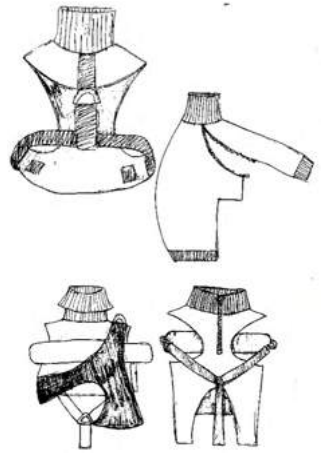
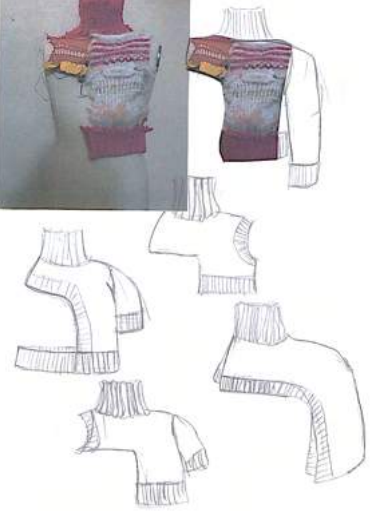
Racing vests



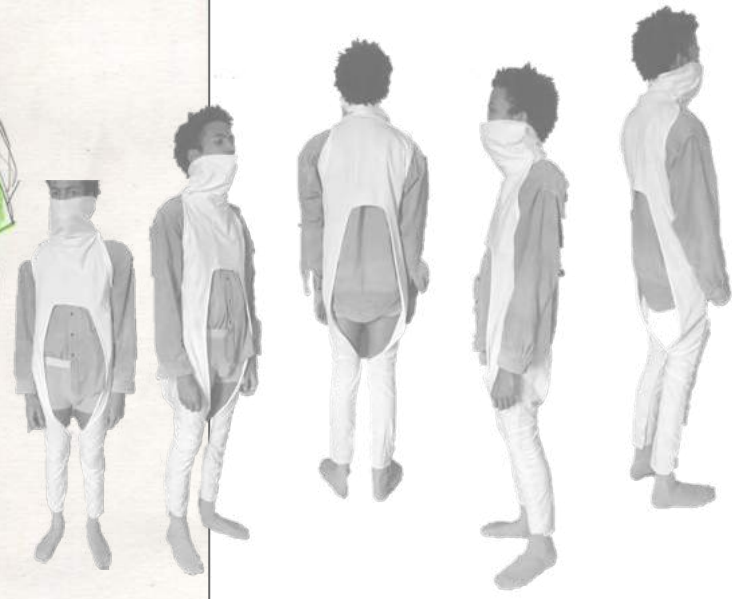
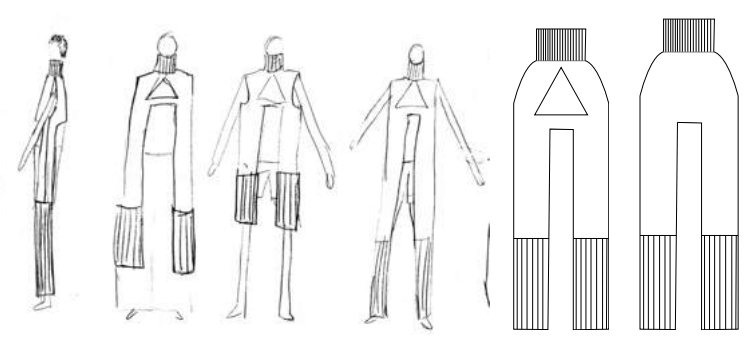
DOG JUMPOERS MADE FOR HUMANS



dog jumpers!  
- Big rib  
- 2/24 panels  
- 2/24 facing armholes  
- 2/24 at front, long at back.

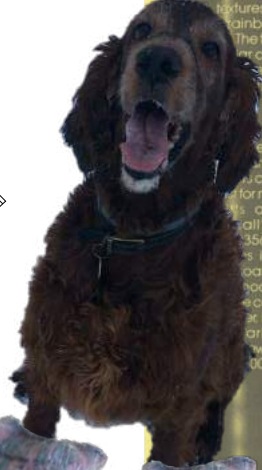
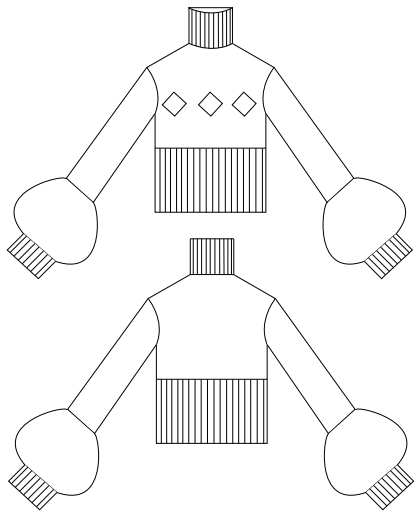












DOGUE PATTERNS

It's a dog's life! The leisure hound is certain to be the center of attention if she steps out in active wear like this from Ruff Lauren for dogwear. The classically styled designer T-shirt and sweatshirt are similar to those available for people, so you can even dress your people in a matching look for those daily outings! The T-shirt can be sewn in knit fabric, textures or not. The two button can be read fashion page sleeve alone or layered the T-shirt, as shown, variety of great looks, you can match or contrast for more impact. Both are featured in McCall's Crafts Pattern 356, which also includes instructions for a coat with a removable hood, and two decorative collars for evening. At McCall's Patterns, 1200 Park Avenue, New York, New York 10069, (212) 356-1000.



356

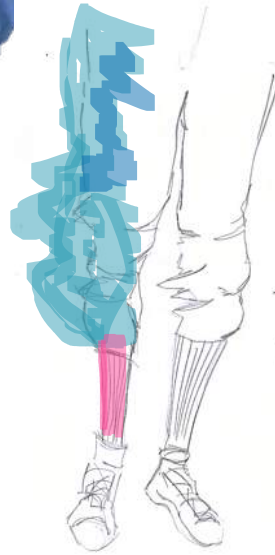








DOG WALKING LIFESTYLE







Dog coat as human coat



Dog garment becomes human garment.

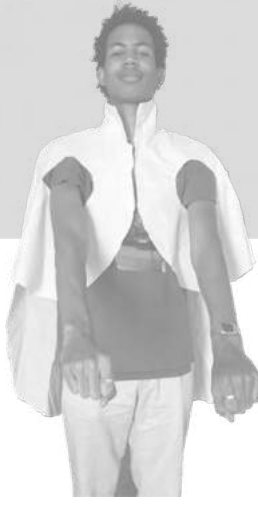


Bring arm holes to the front

Toggle to shorten



flex to allow movement











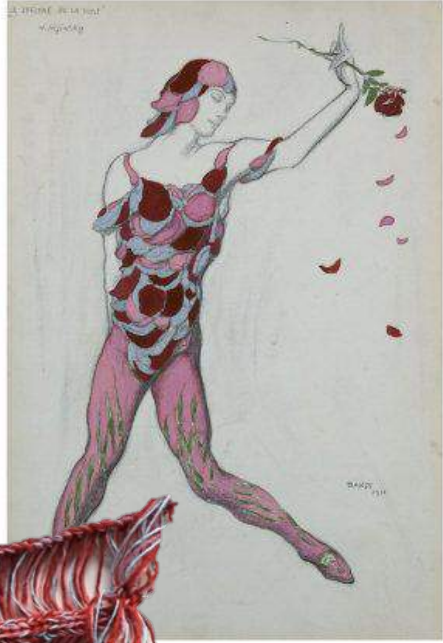




LUCY GREEN  
Considered capsule collection

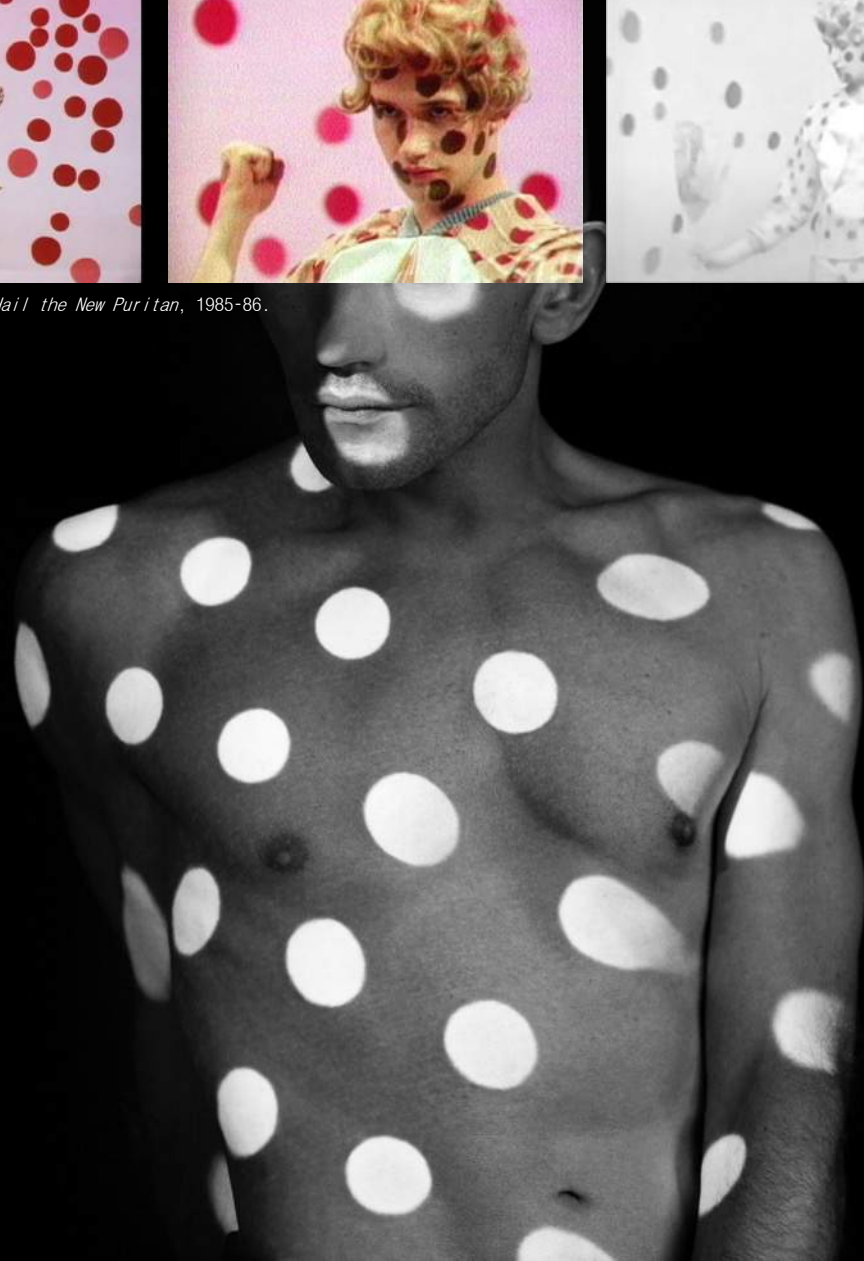
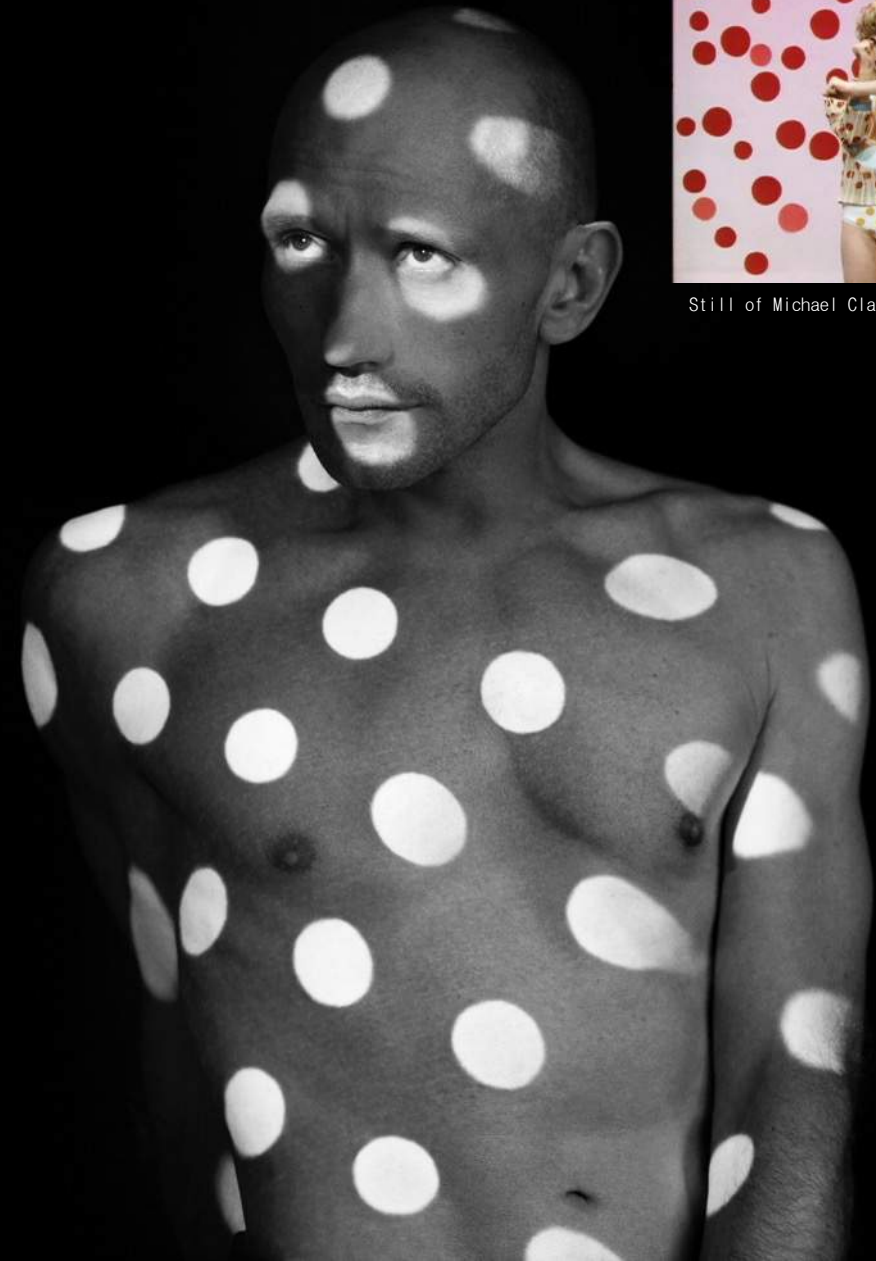
Exploring revolutionary dance movements that showcased creativity and expression at its highest with use of sustainable ways of making.



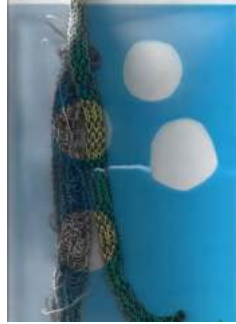
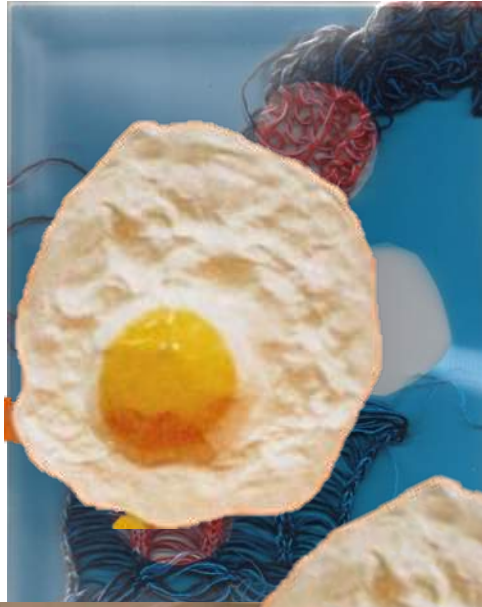




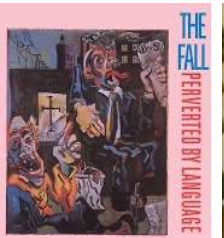
Still of Michael Clark in *Hail the New Puritan*, 1985-86.



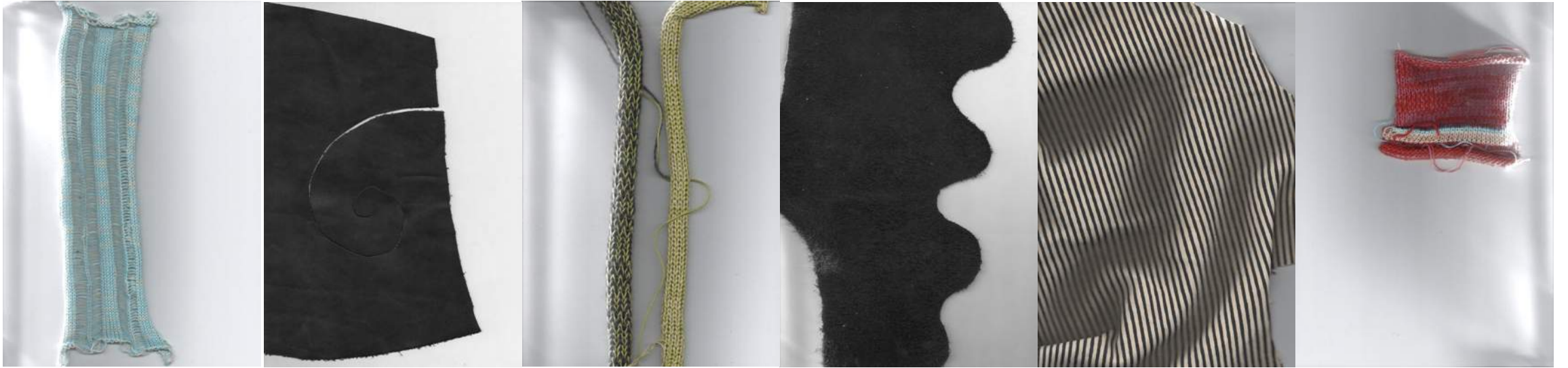




Michael Clark and the fall collaboration-1980s







SUSTAINABILITY- USE OF LEATHER OFF CUTS AND ZERO WASTE KNIT



