

Léo Portier-Tock

DIGITAL PORTFOLIO

Design Philosophy

My aesthetic is an eclectic mix of grungy with historical but with the quality of minimalism as a foundation. I like disproportions while experimenting with textile combinations and garment construction and cut. I like to experiment with traditional craft and modern manufacturing techniques.

As an observational sort of designer who analyses details of common everyday objects, I find that I continually see beauty in natural processes that inform shape, colour and textile processes; sun bleached curtains (for example), creases, dents, and collapsed structures. I am also drawn to flawed objects that have unintentional ornamentation so for instance seams in injection-moulded packaging have irregularities that I think are beautiful.

I am obsessed with moulded ornaments because they embody a humble simplicity but are also very elaborate because the plain material is stretched to emulate the underlying raised structure of another object. I am very interested in 3D object design including architecture and furniture- which I often reference. While I like to experiment with texture, my colour palettes are more muted and minimal.

I enjoy analytical and observational drawing alongside replicating form and sampling. As a personal interest, I would like to incorporate this into my practice when I leave Uni and would like to explore Accessory design or other product or packaging design in the future but with the focus on tying in traditional craft processes and modern technology.



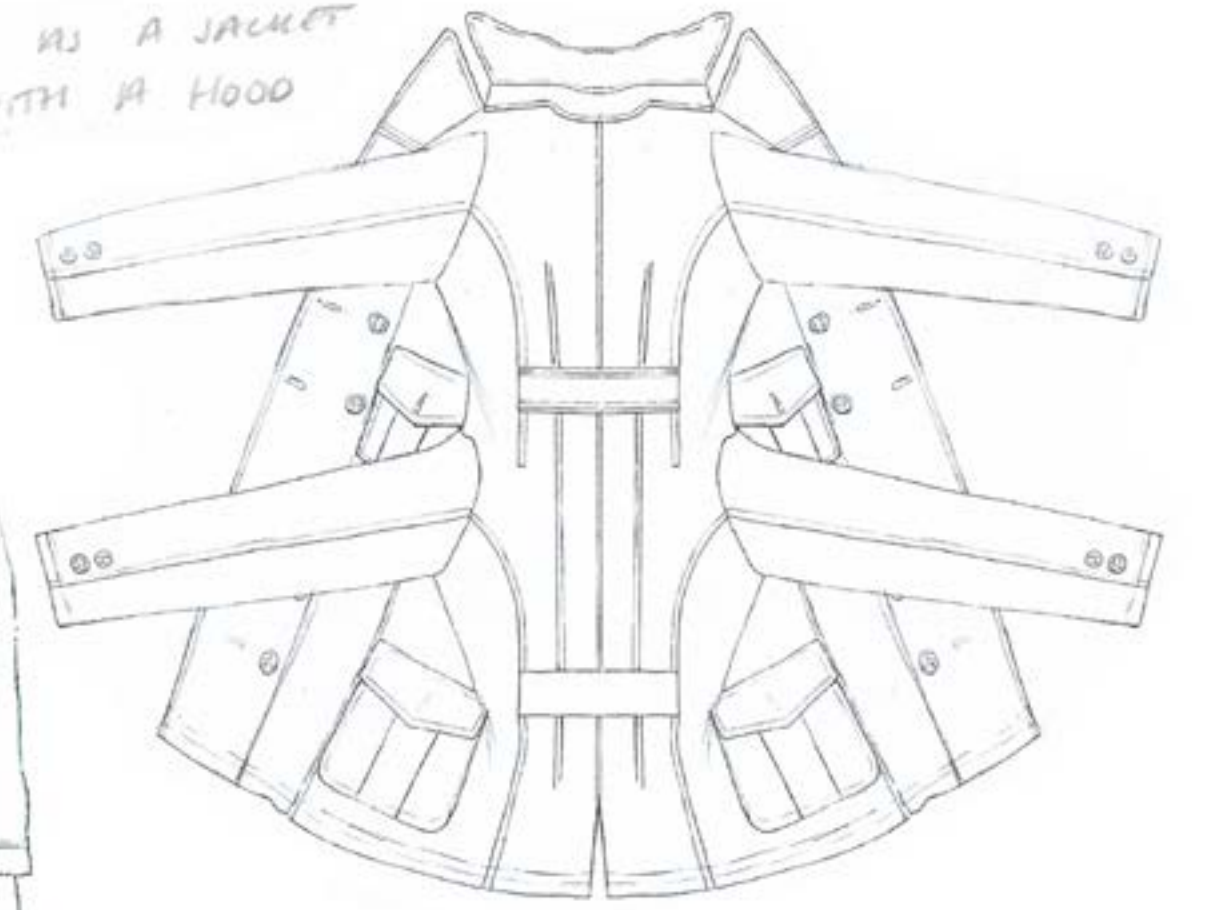
The wardrobe malfunction



Multifunctional : 2 sets of sleeves
Spille's jacket looks like it isn't
on properly either way.

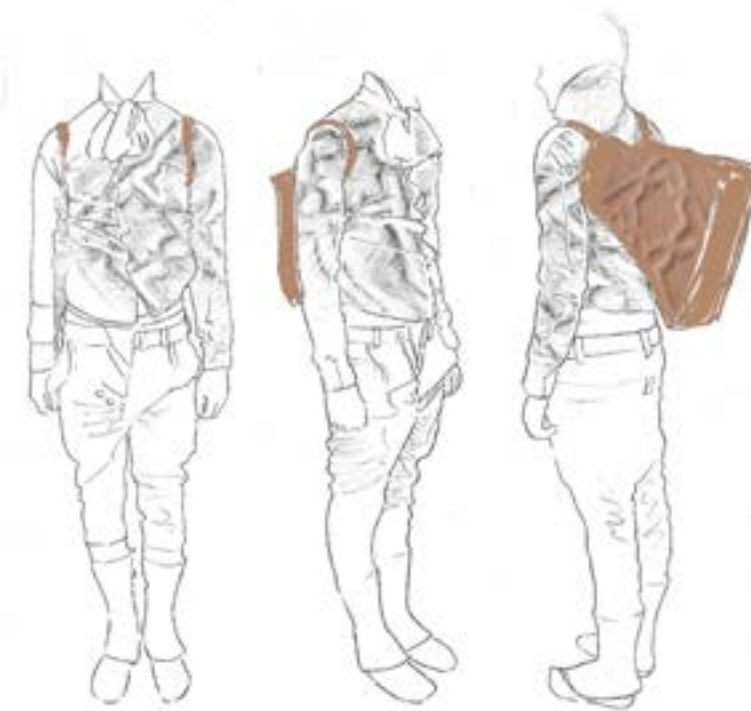


WORN AS A JACKET
WITH A HOOD





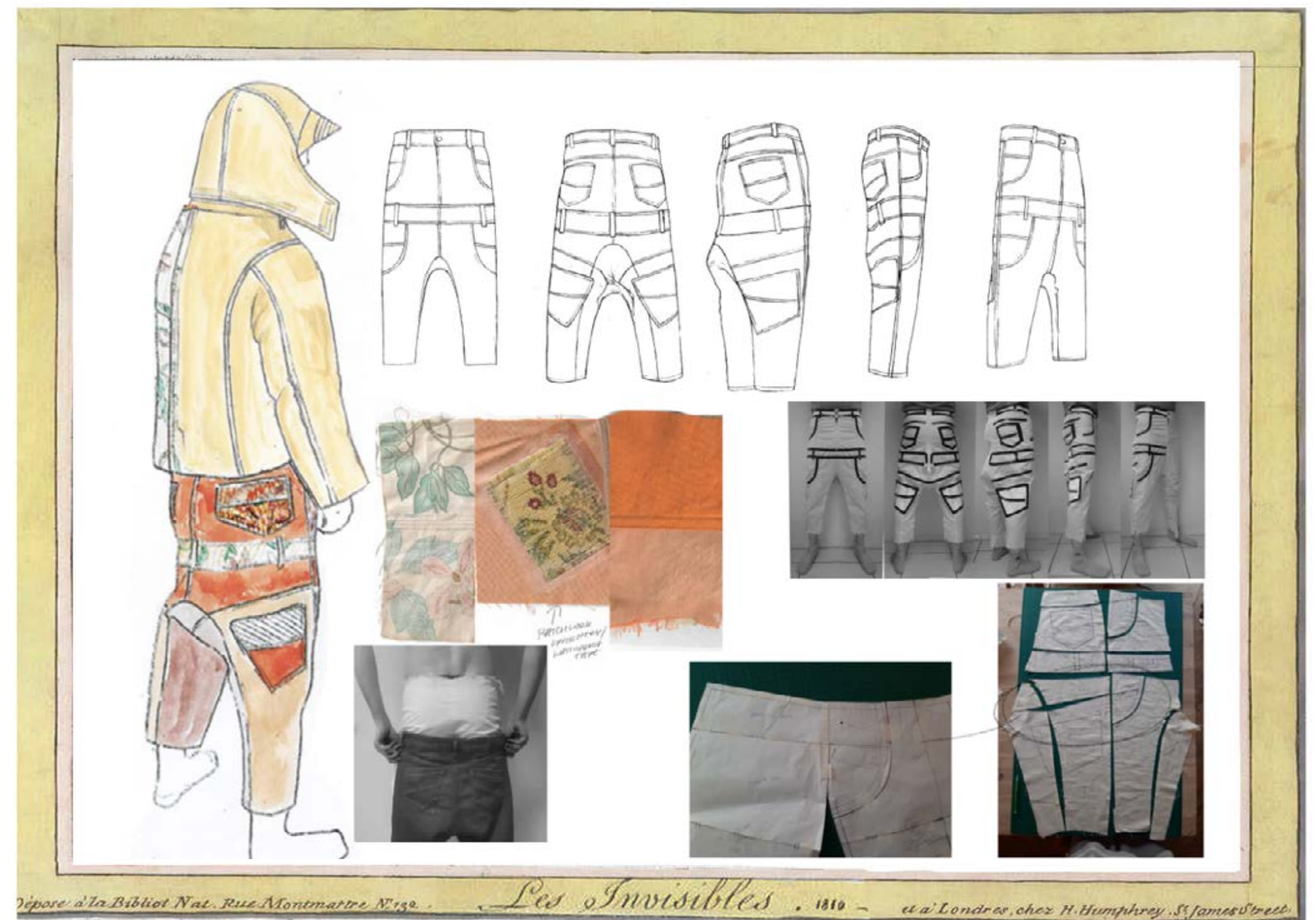
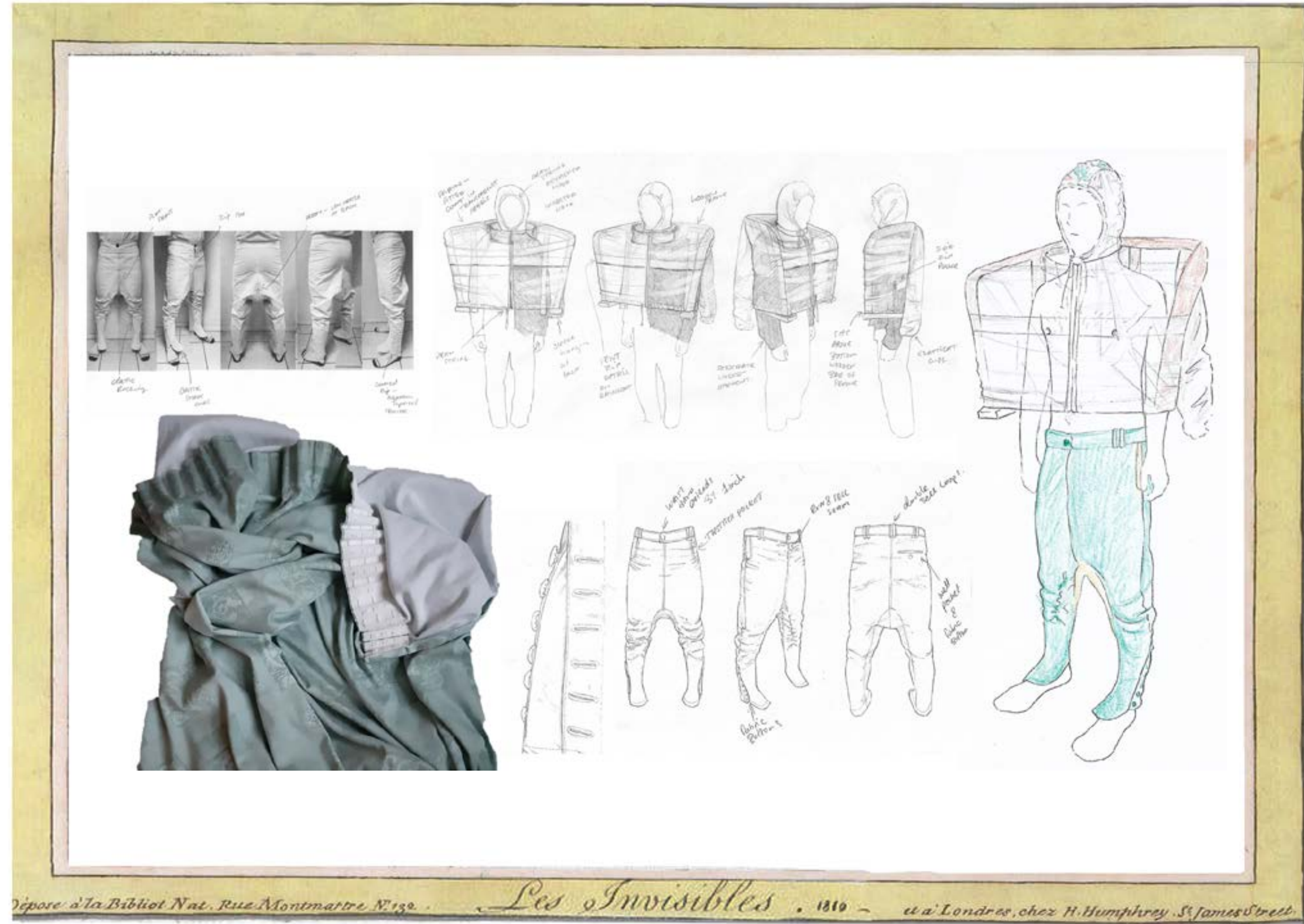
Interest in emulating the surface ornamentation

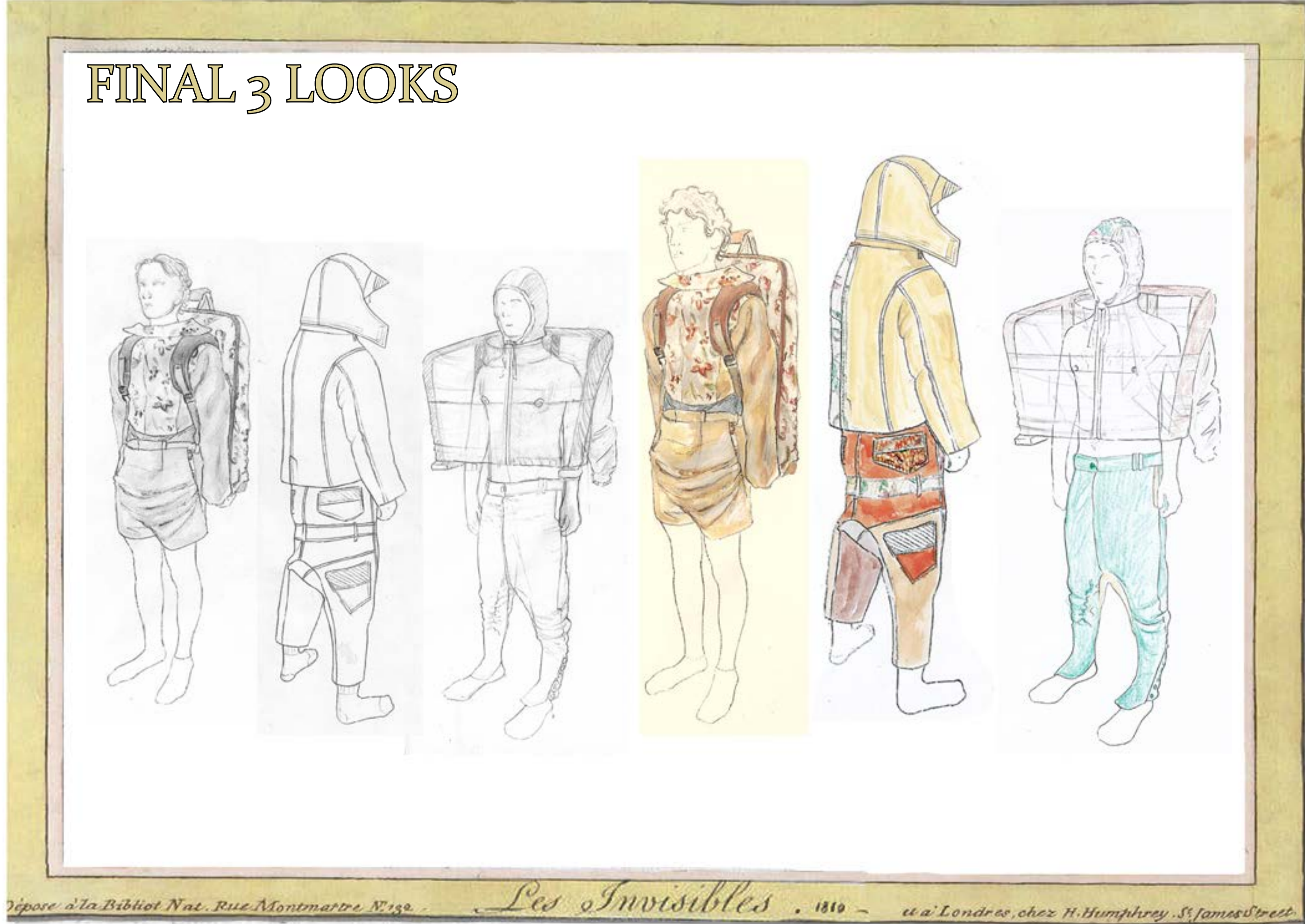












GFW ACCESSORIES COMPETITION ENTRY



GFW ACCESSORIES COMPETITION ENTRY



GFW ACCESSORIES COMPETITION ENTRY



GFW ACCESSORIES COMPETITION ENTRY

"When he makes himself into a dandy a man becomes a piece of boudoir furniture"

GFW ACCESSORIES COMPETITION ENTRY

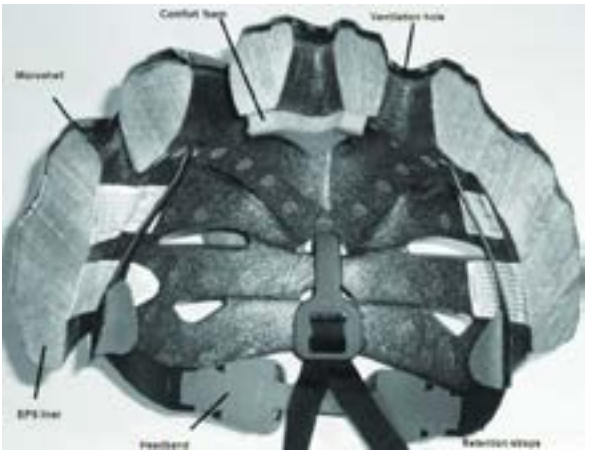
Coronavirus: UK faces cardboard shortage due to crisis



Christophe Lemaire ss14
Minimalism in surface print
but maximalist in shape.

M IN MOULDING
IN MOULDING

The innovative "in moulding" technology, joining the inner polystyrene cap to the outer polycarbonate one, ensures a better shock absorption.

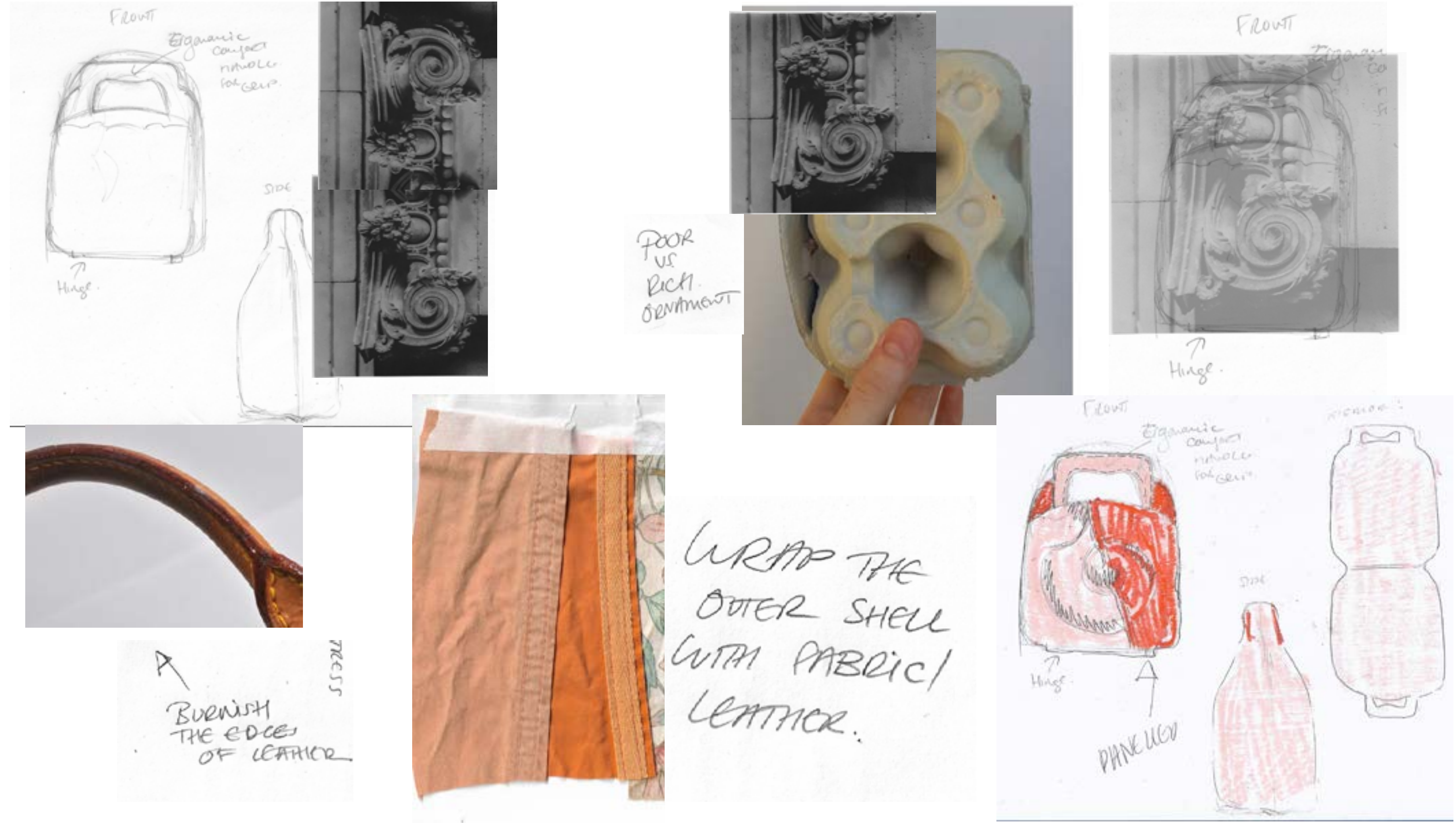


My design proposal is to make fashion accessories that are made using waste materials combining traditional and modern-industrial techniques.

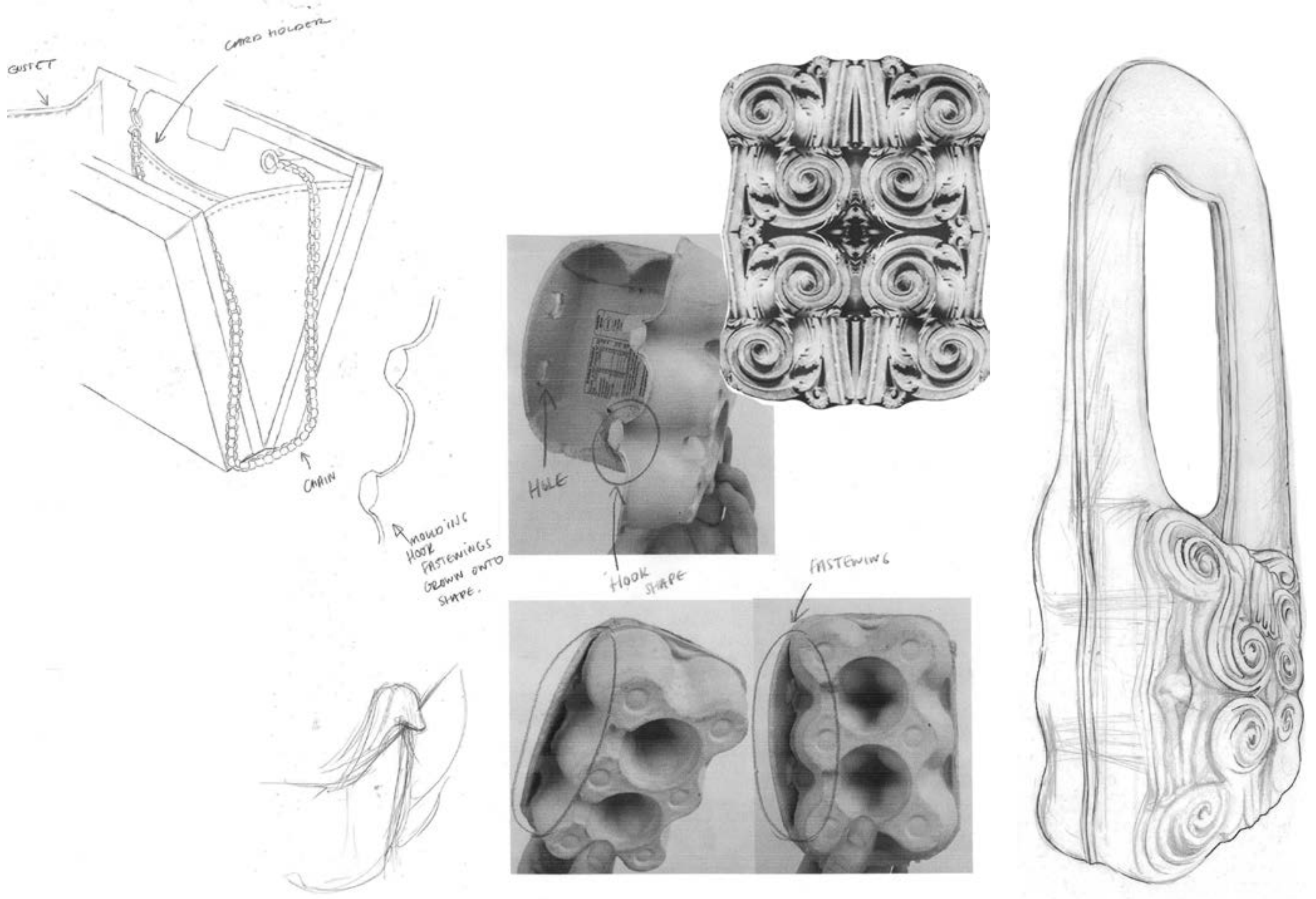
Borrowing the concept of manufacturing techniques such as those used in the packaging industries like pulp moulded containers, the shell of a handbag could be made this way to create a 3D structure without sewing: eliminating sewing and use of fabric and thread.

The shell could then be padded out (filled with EPS Foam used for making the soft shell of a biker helmet), treated with a layer of paint or wrapped with an outer layer fabric.

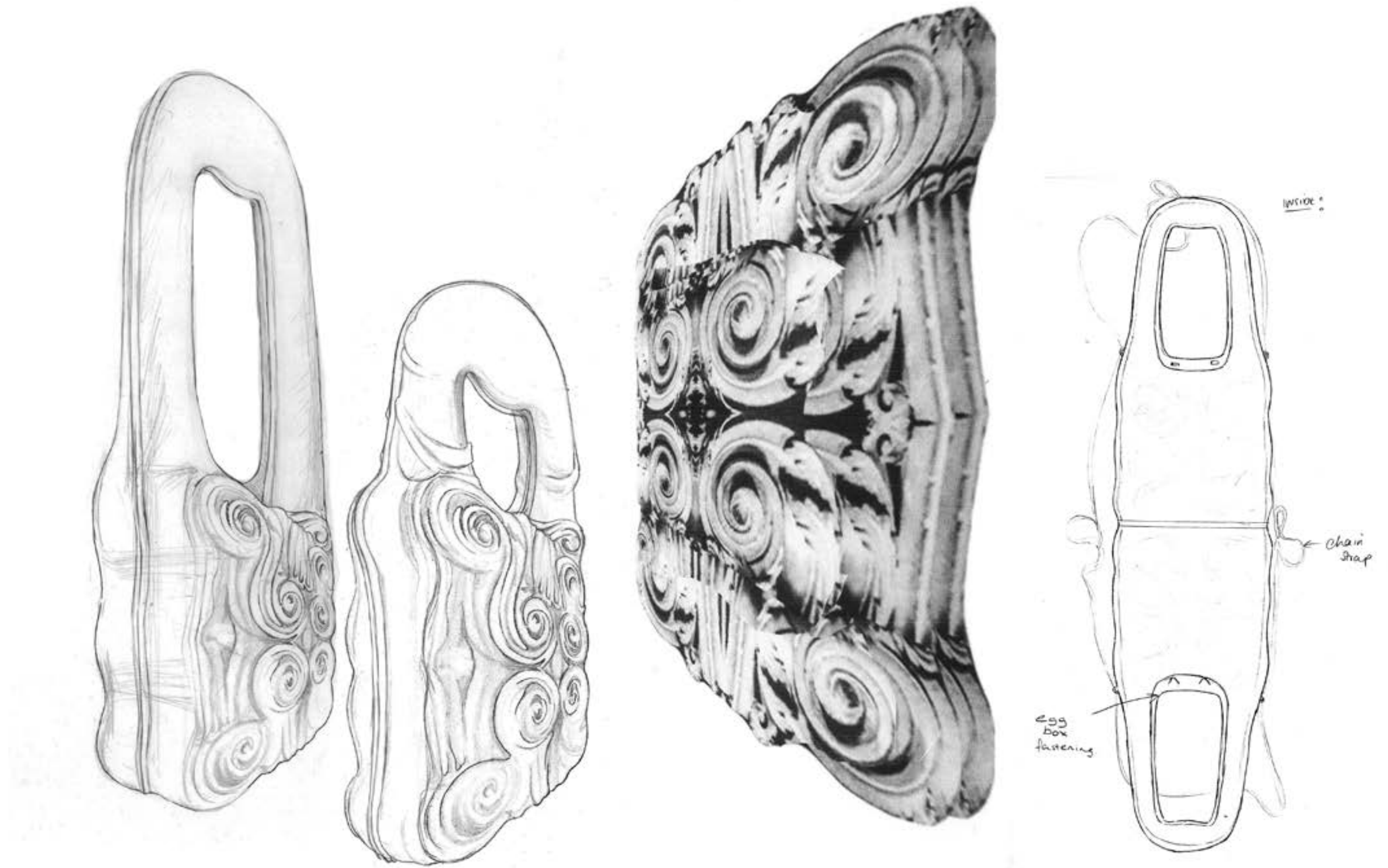
GFW ACCESSORIES COMPETITION ENTRY



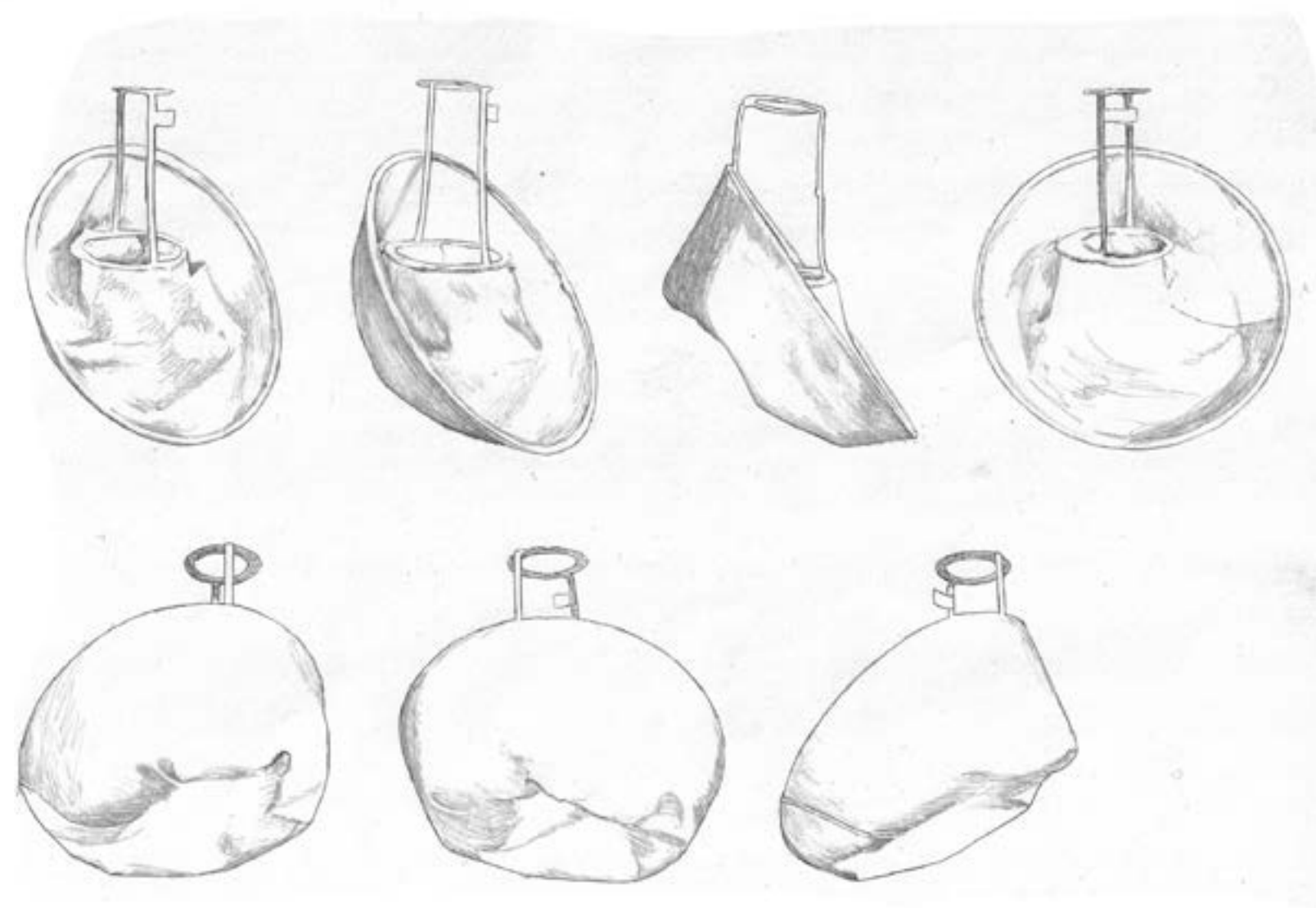
GFW ACCESSORIES COMPETITION ENTRY



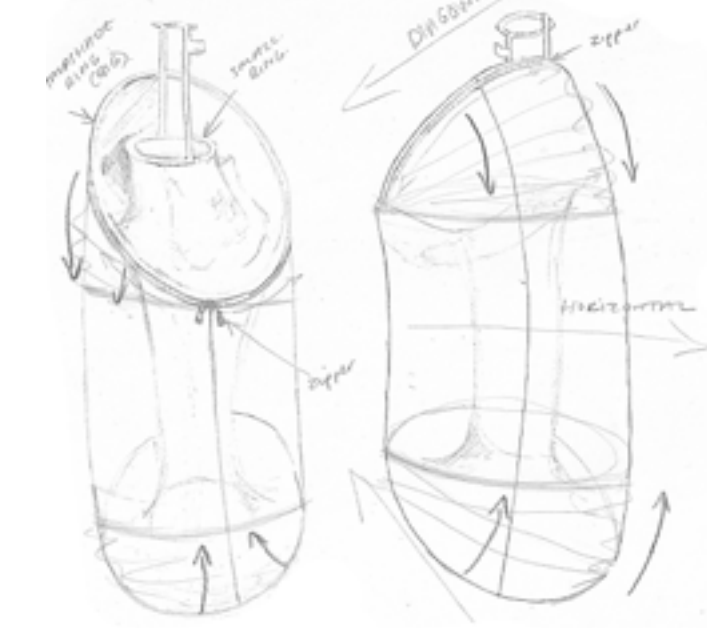
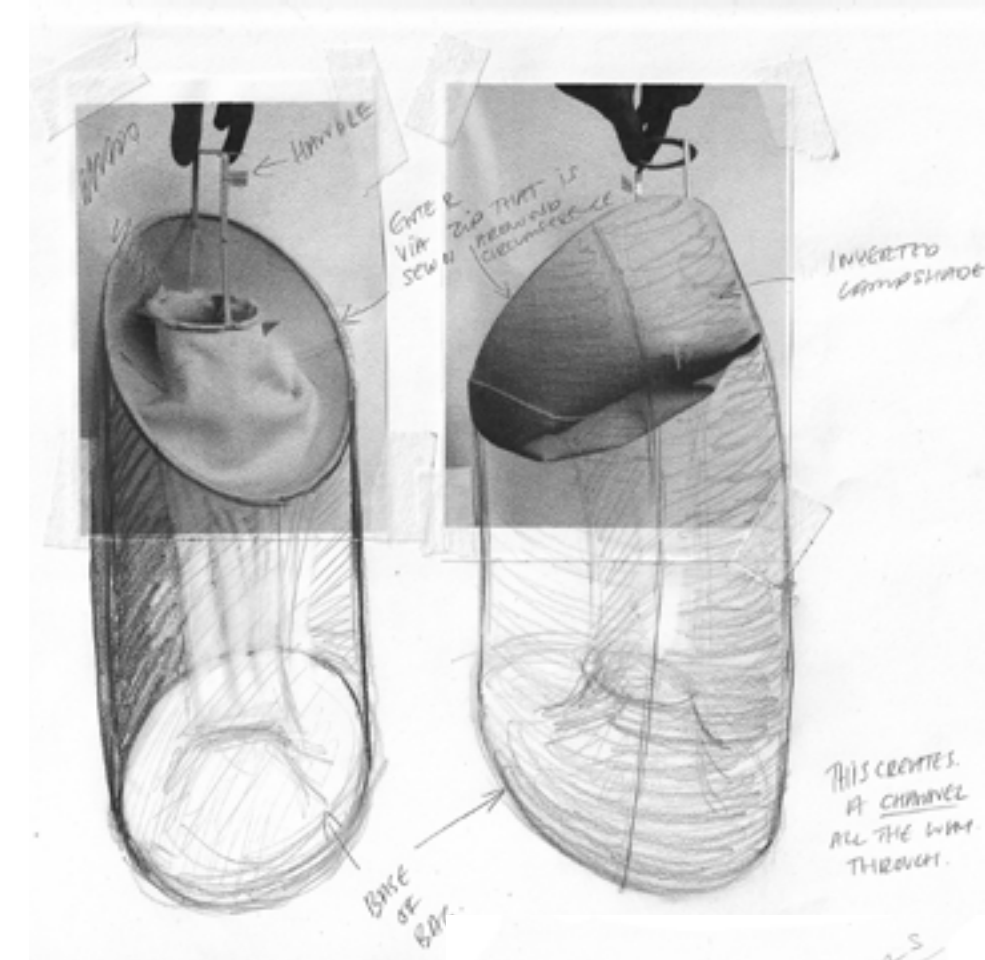
GFW ACCESSORIES COMPETITION ENTRY



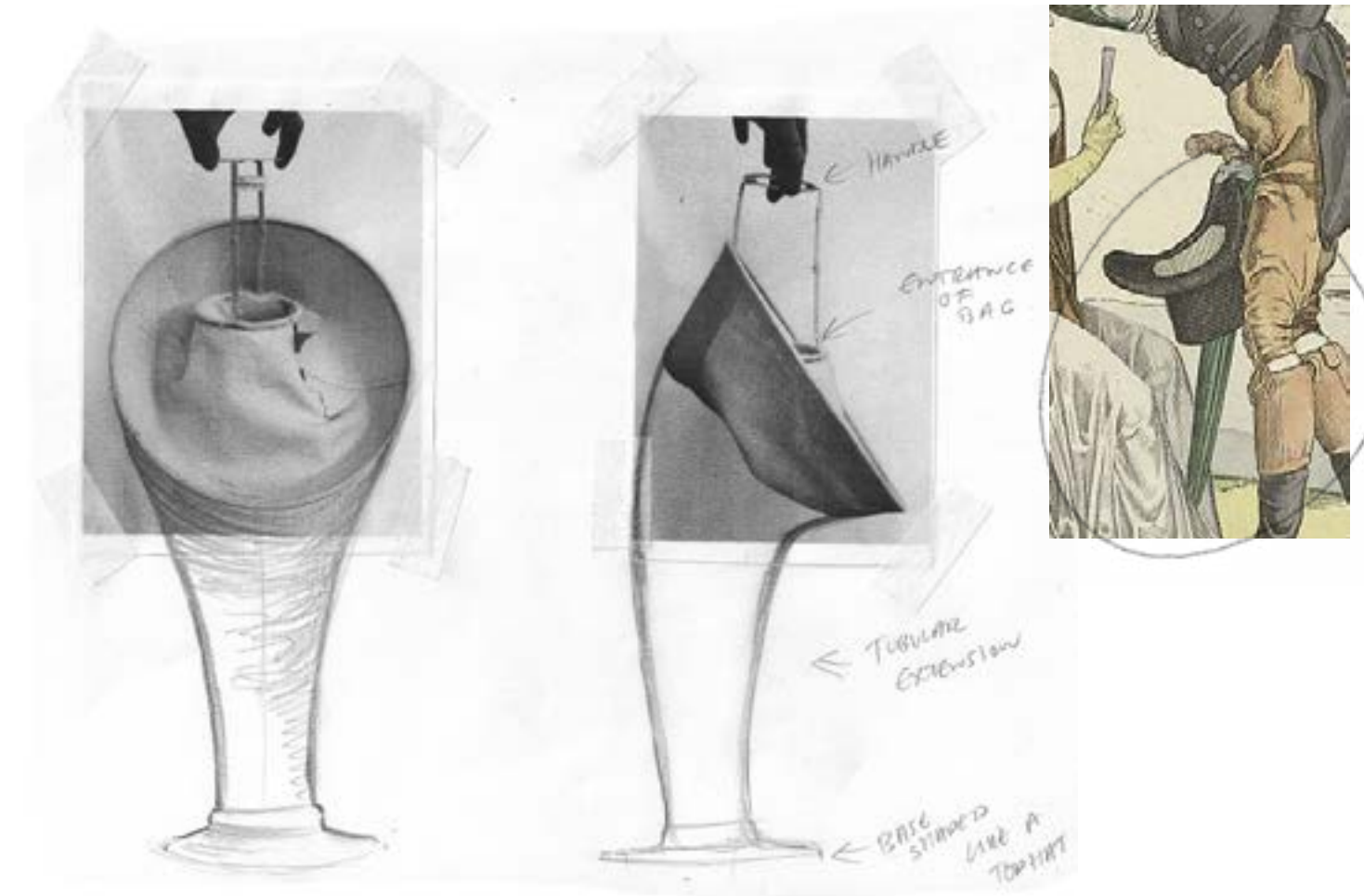
GFW ACCESSORIES COMPETITION ENTRY



GFW ACCESSORIES COMPETITION ENTRY

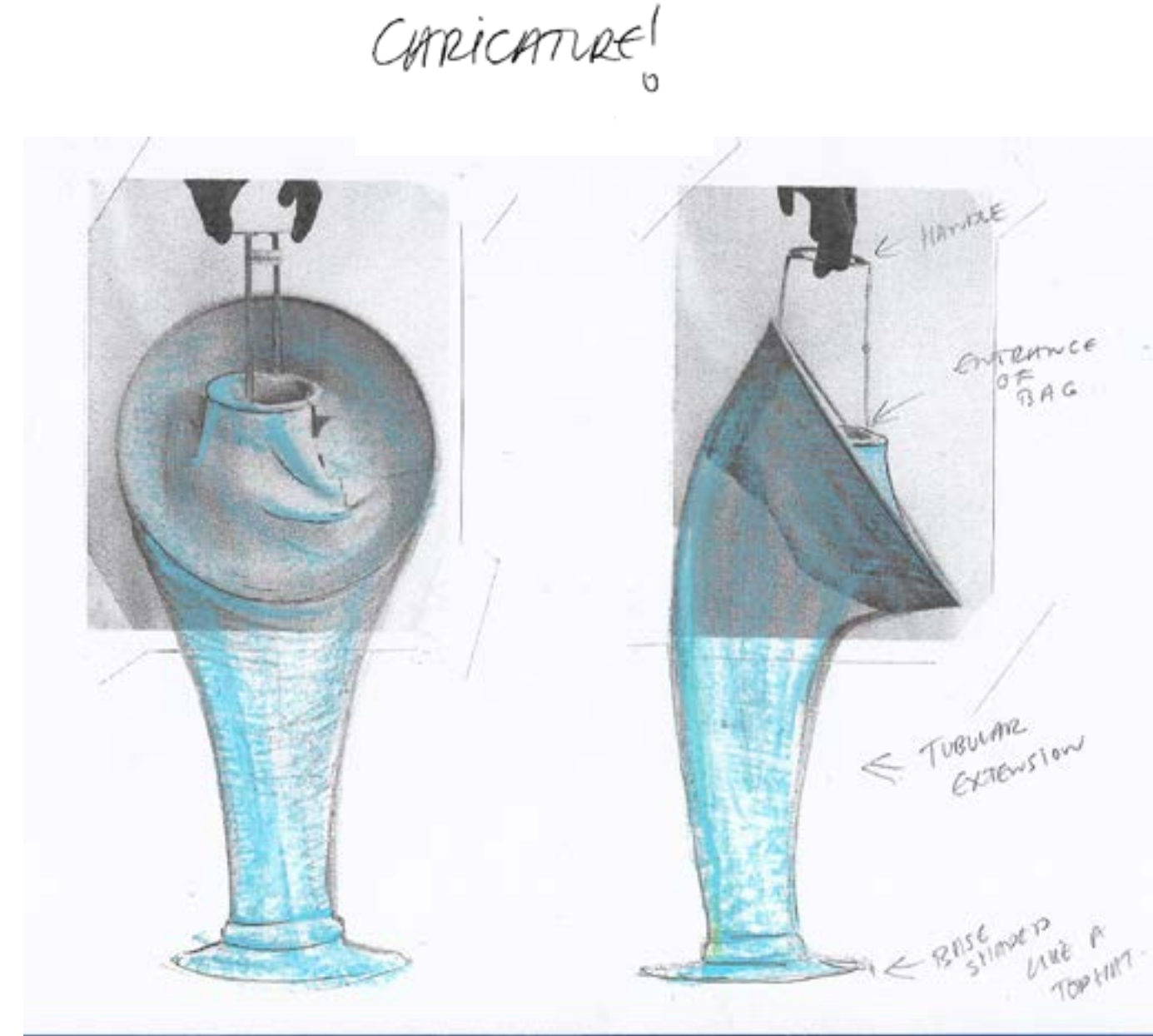


PANELING THE BAG WITH STRAIGHT, HORIZONTAL LINES. MEANS THE RING OF THE LAMP SHADE (BIS) CAN HOLD IN AND SIT ON TOP OF UPHOLSTERY



* CURTAINS
 * OLD TENT
 * OLD FASHIONED
 FABRICS STAINED
 IN TEA, COFFEE.

DISTRESSED
 PAIDED COLOURS.



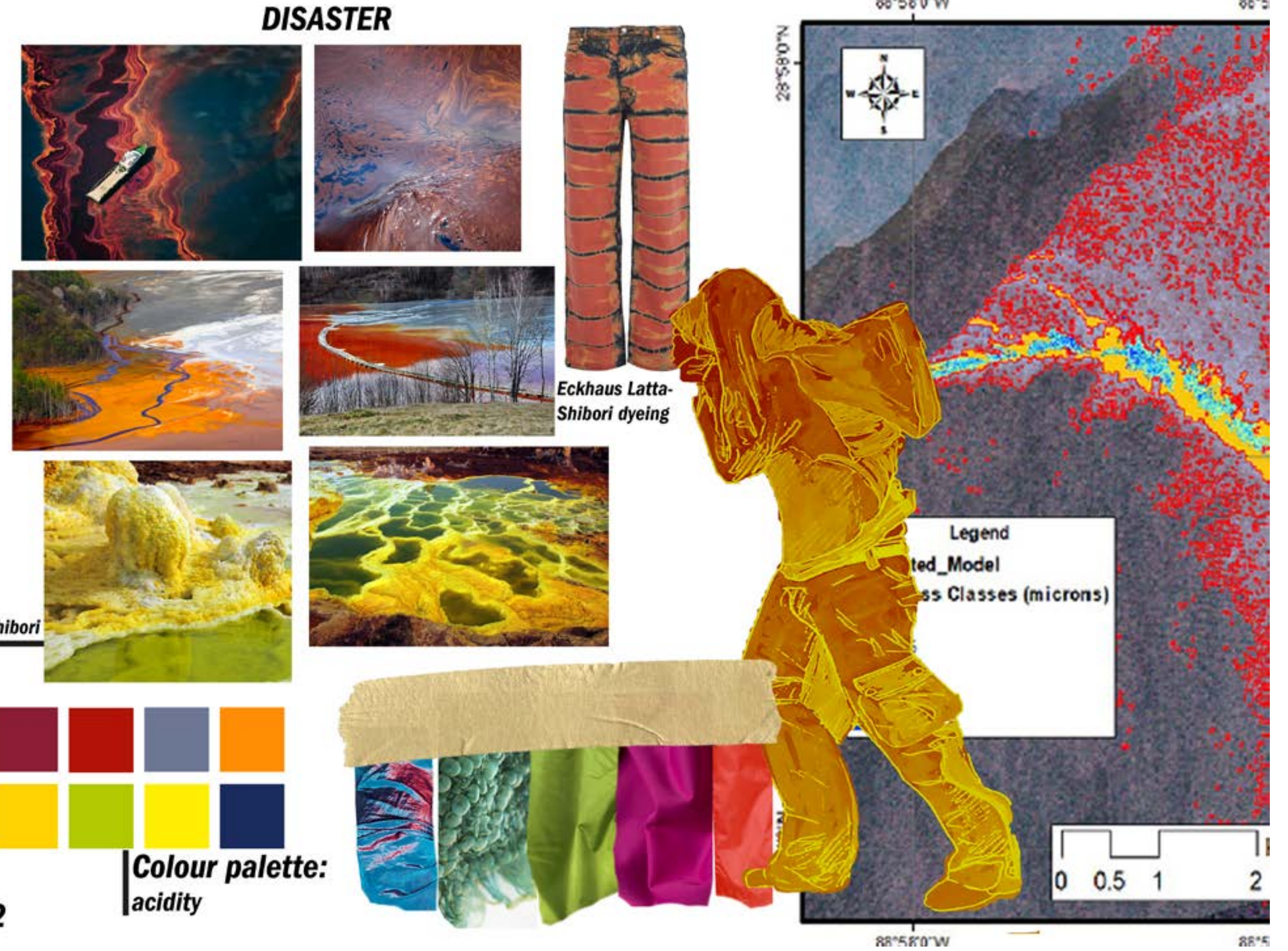


Aithor Throup: Articulated pants from "Legs" collection (engineered cut that alters the silhouette).



ALEX IN THUNDERLAND

ALEX IN THUNDERLAND



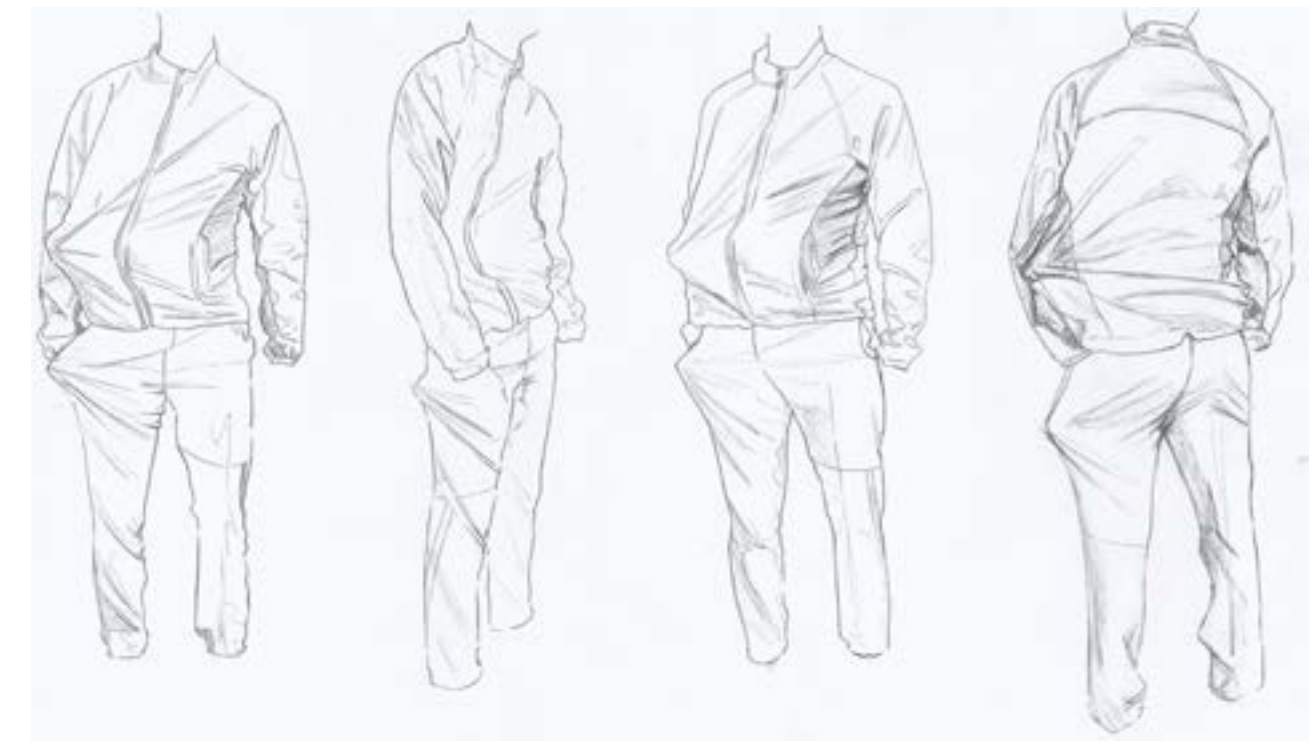


Silhouette Development

Folds and creases



Panneling placement



ALEX IN THUNDERLAND

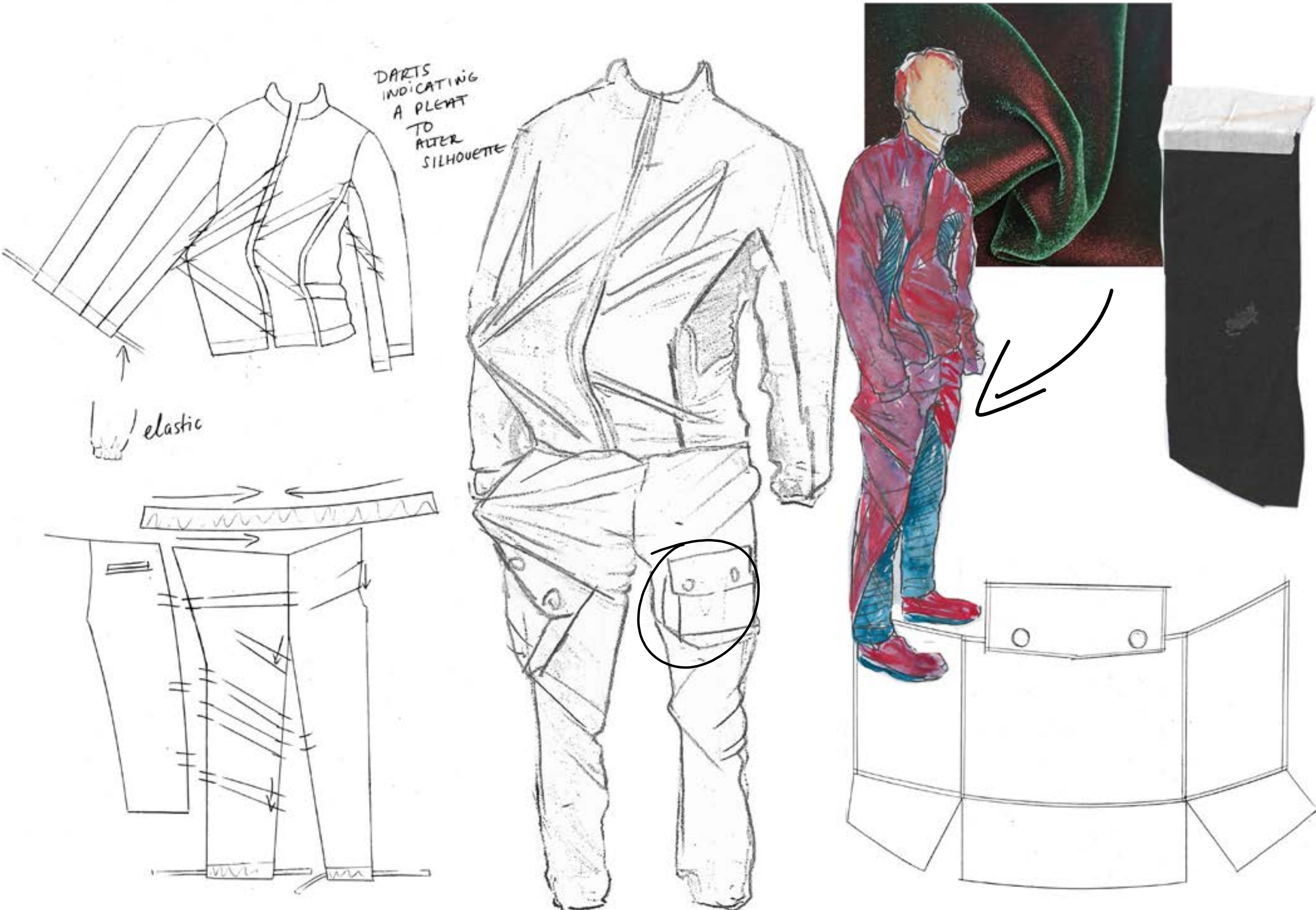
ALEX IN THUNDERLAND



UMBRE PRINT -
INSPIRED
BY OIL SPILLS



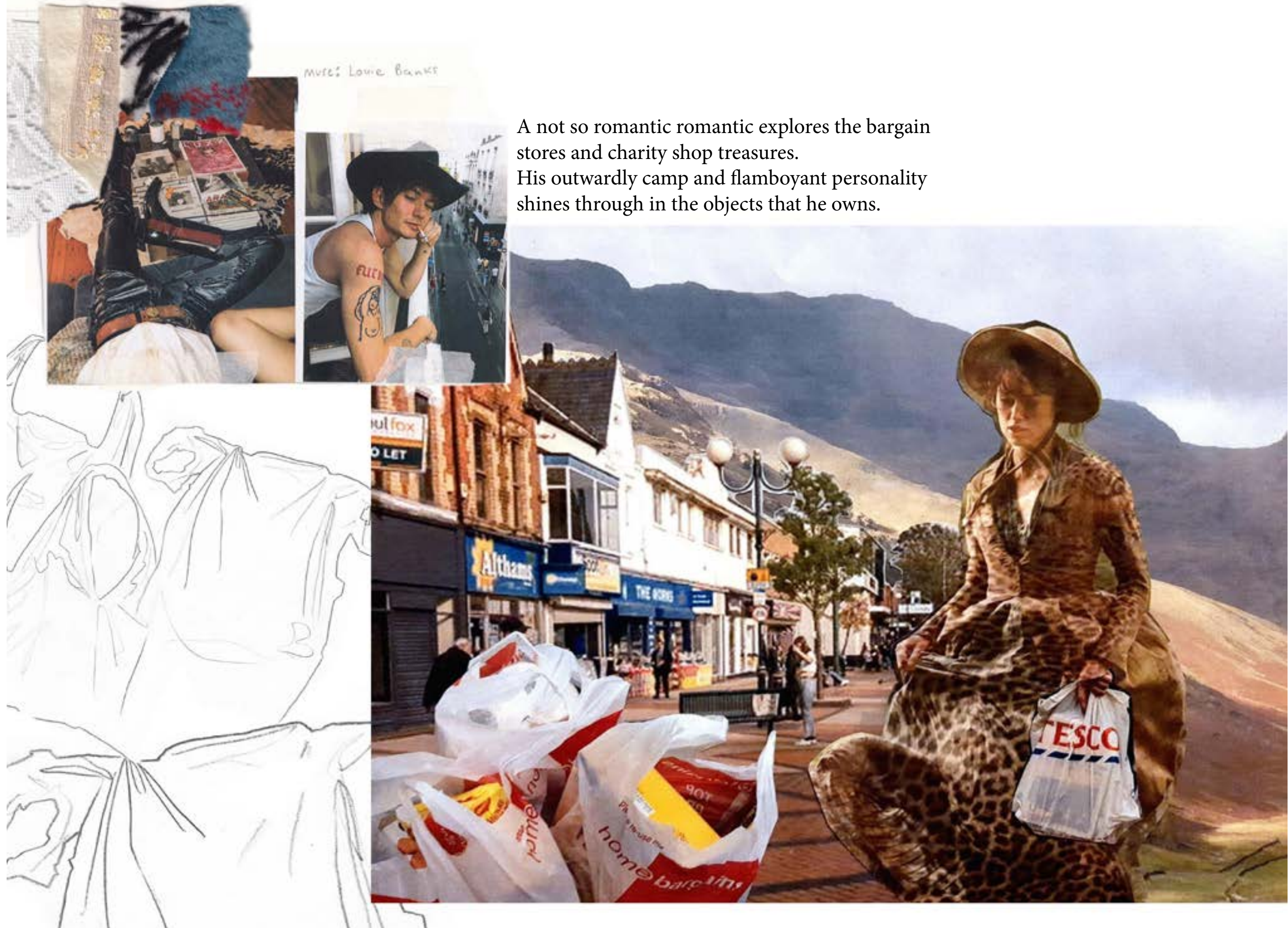
ALEX IN THUNDERLAND



ALEX IN THUNDERLAND



3-LOOK LINE-UP



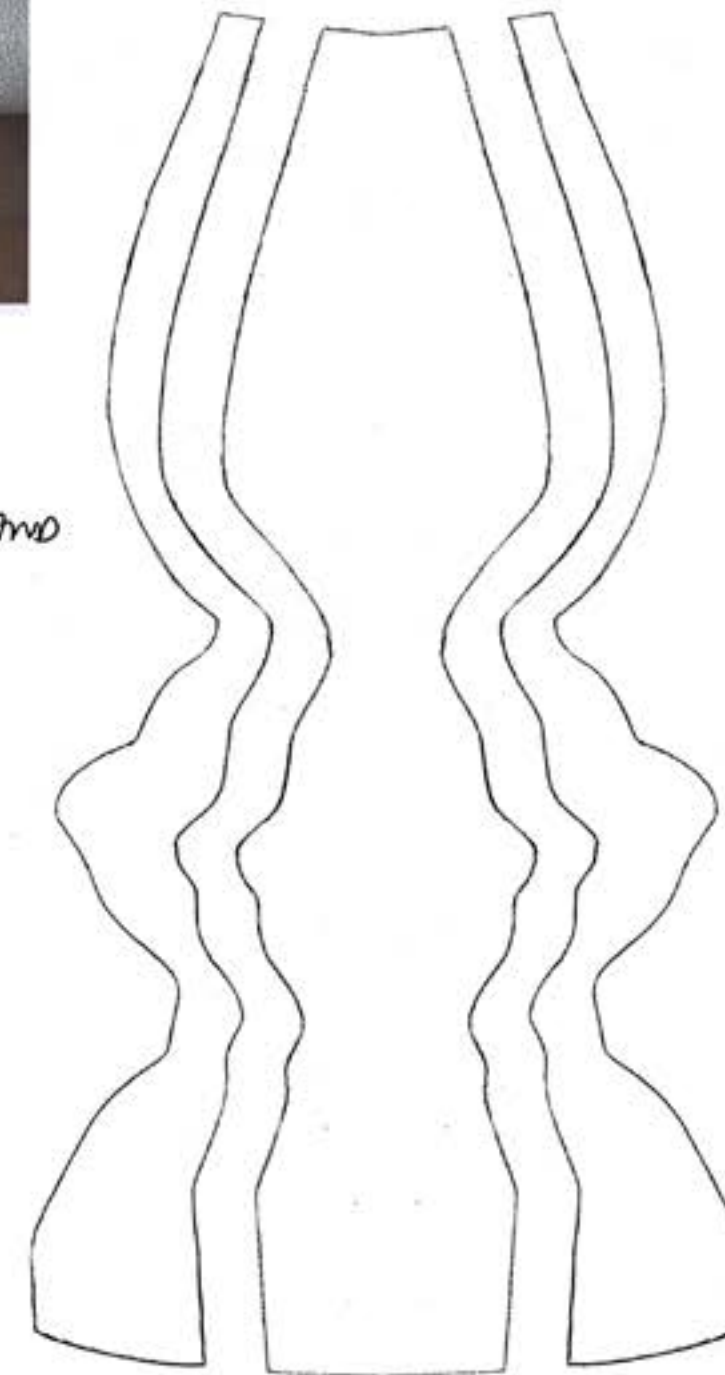
Second-year "Design philosophy brief"



Second-year "Design philosophy brief"



↑
ANTIQUE
BRASS LAMP STAND



← PANNELING

SAILOR IN AVANT-GARDE
SCULPTURAL HARRINGTON JACKET







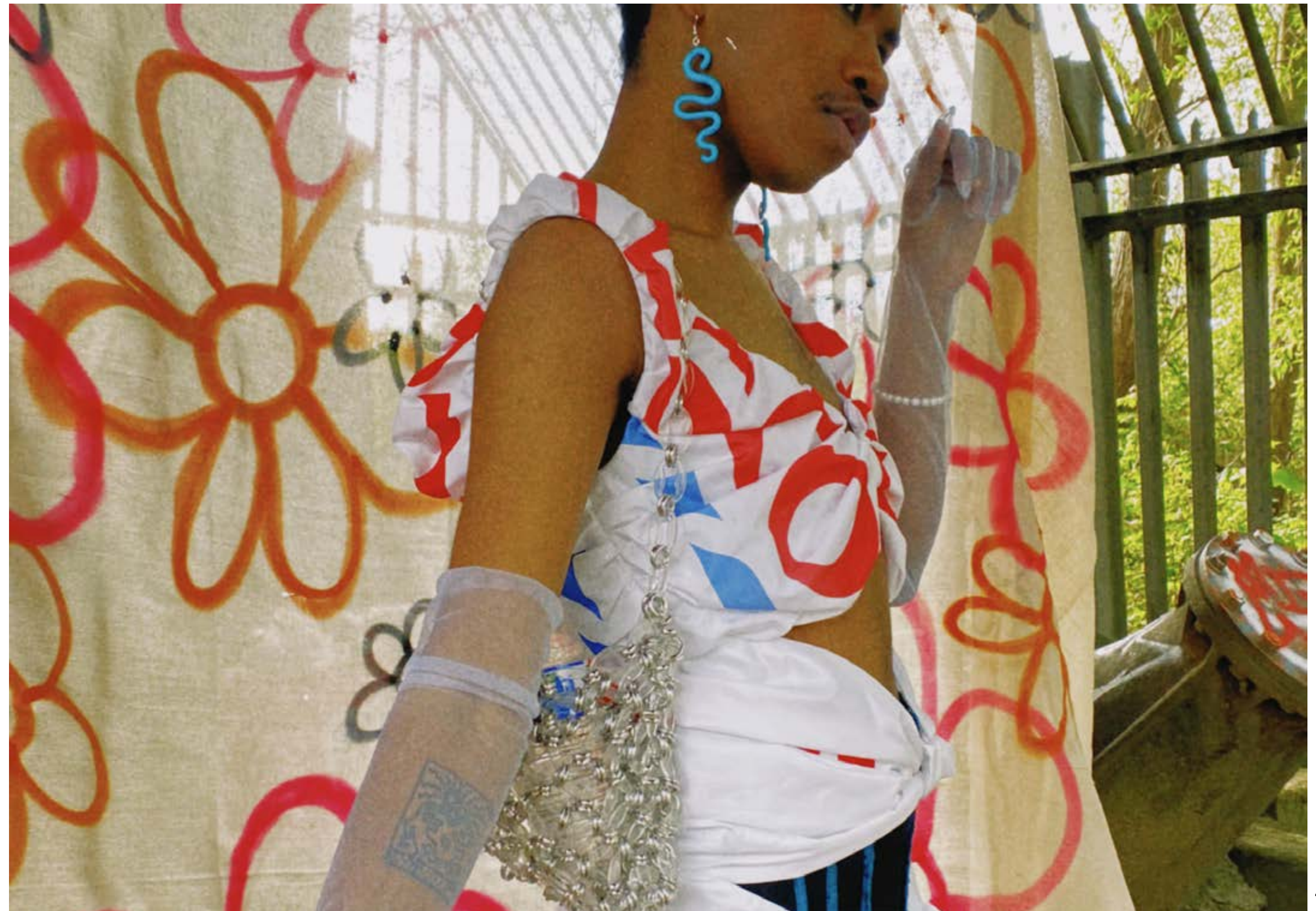
SCALLOPED
EDGE
LACE



SLASH, SPREAD,
GATHER →



Second-year "Design philosophy brief"



Second-year "Design philosophy brief"