

# Sangharsha Gurung

Manchester Metropolitan University

Menswear/Knitwear Design

Email: [gurungsangharsha@gmail.com](mailto:gurungsangharsha@gmail.com)

# A Lone Diasporic Identity

(Final Year Project)







# DESIGN PHILOSOPHY

My collection is titled 'A Lone Diasporic Identity' and was inspired by my own diasporic experience. Having moved to the UK at a young age with my family, my connection to my homeland was limited to memories and experiences through storytelling. The disconnect between my culture and my heritage generated a sense of loss and division in my life. This became the basis of my research and my initial ideas were focused on the idea of reconnecting to the past and collecting memories of a lost homeland, childhood and culture.

As my concept developed, I brought in the influences of growing up Nepali-British and the struggle of identity I faced as I progressed through life. Having attended a preppy school, I find that many of my influences today can be traced back to specific experiences that stuck with me ever after. My collection has greatly been shaped by this, such as the references to school sport like rugby, and the 'boys in the playground' attitude, playing make-believe and creating a fantasy world.

Through my collection, I wanted a stark juxtaposition between these two strands of research to accurately replicate the struggles I faced with my identity. I wanted to create tension within the garments and designs, with a humorous approach, taking generic items and skewing them slightly to form a sense of longing to be one thing, but not to stray too far from the comfortable and the usual.

**\*Diaspora:** the movement, migration, or scattering of a people away from an established or ancestral homeland









Digitally manipulated rugby shirt developments







Boy wearing Gurung dress



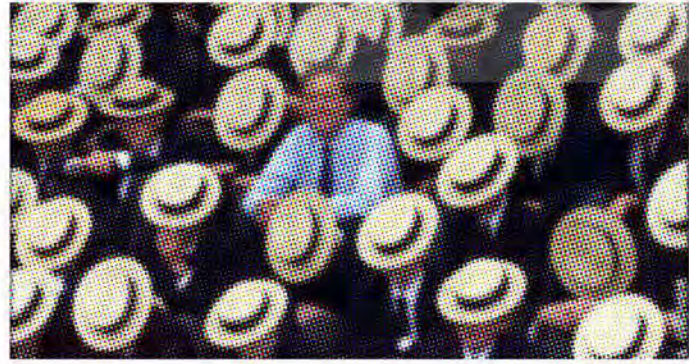
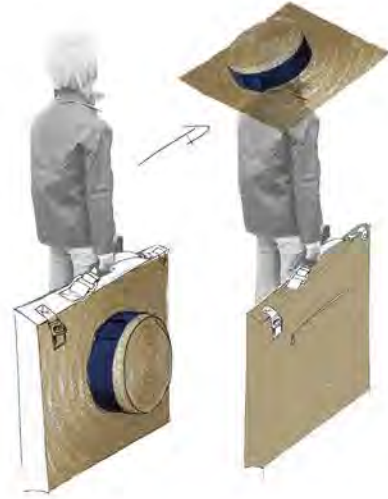
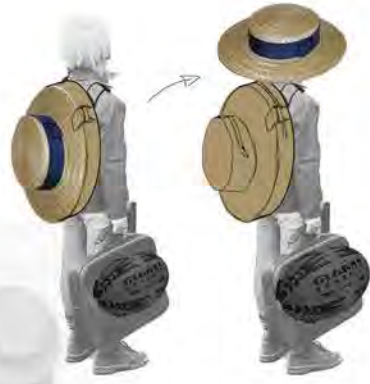
Experimenting with drawstrings and gathers to distort shapes





# Accessories

A whimsical approach to accessories inspired by boaters hats, Nepali straw weavers and rugby balls.





Line Up

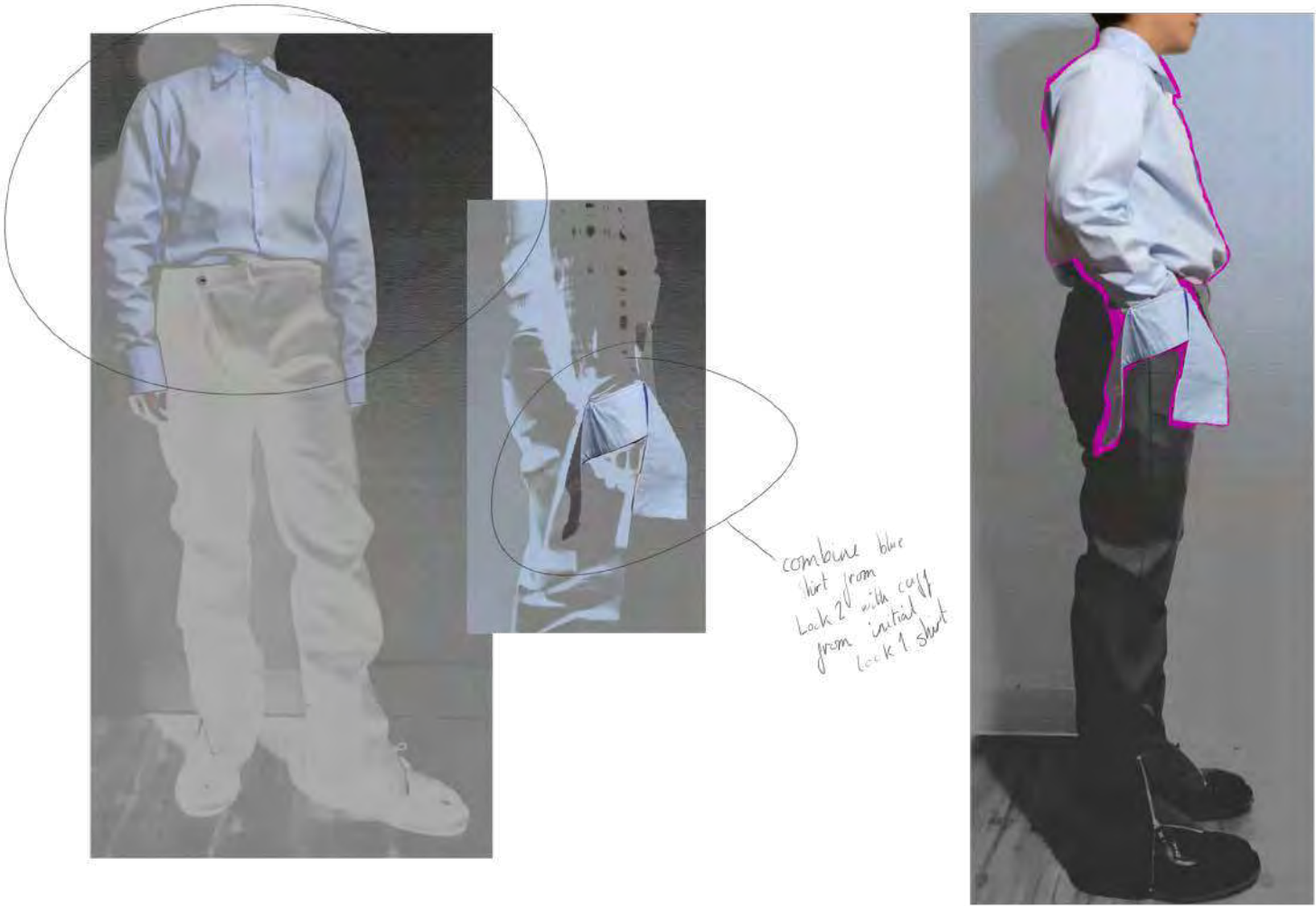




Look 1 Development



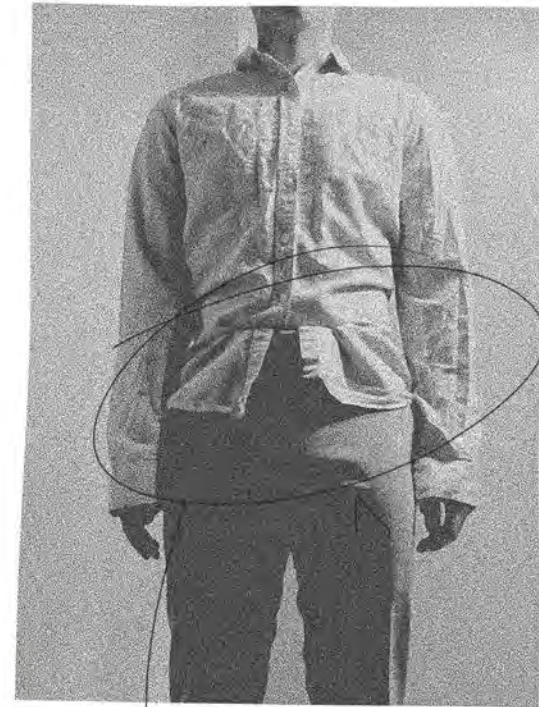
References to knitwear and silhouette



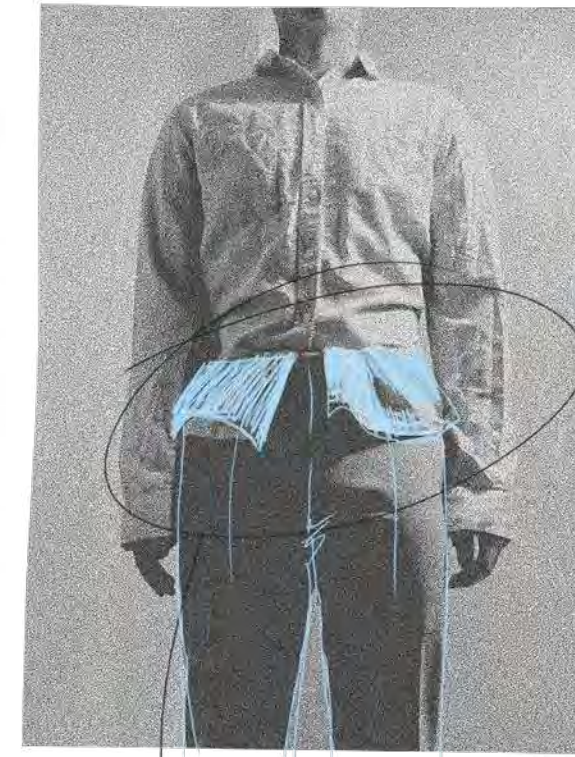
Exaggerated sleeve cuffs



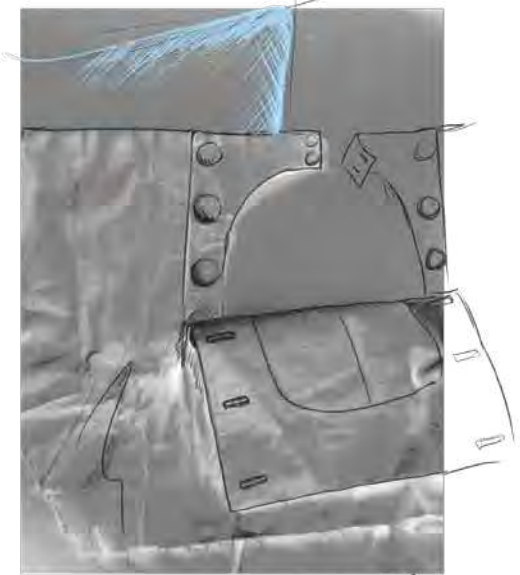
Look 1 Trouser Development



Messy 'untucked' shirt



Have as part of trouser



Lederhosen details



'Tuck your shirt in!'  
recalling memories of dress codes



Look 1 Trouser



Fastening details

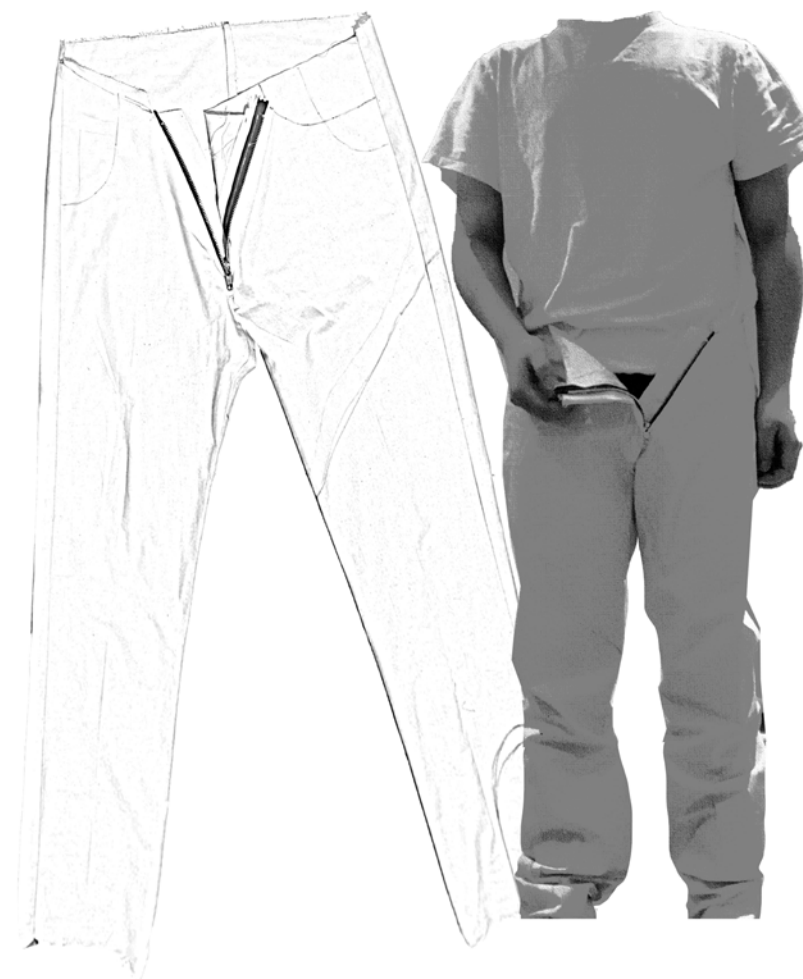
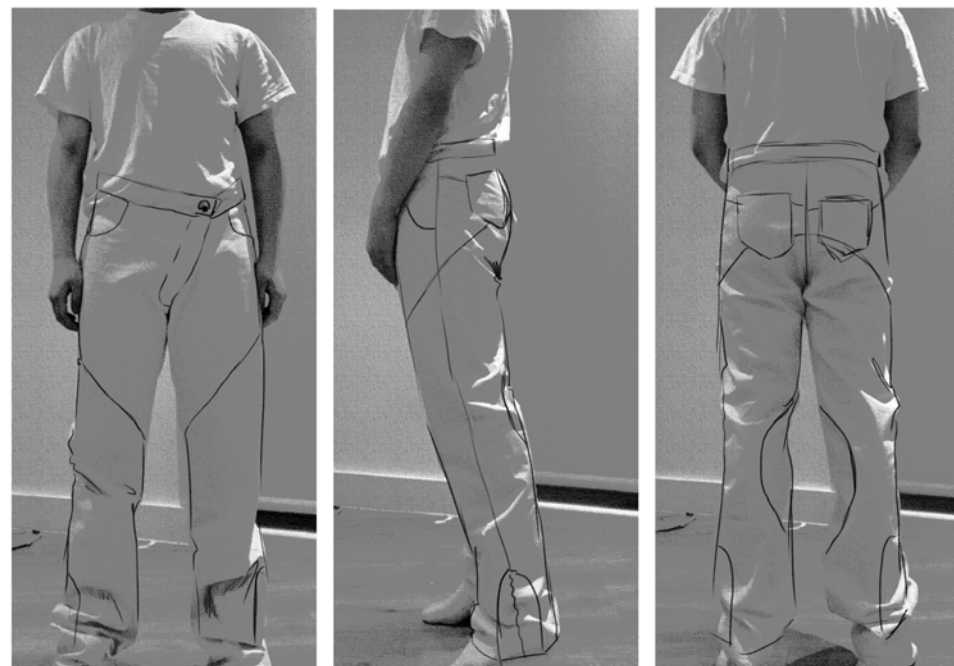


Look 2 Development  
Knitted cable sweater





Look 2 Development  
Paneled leather trousers

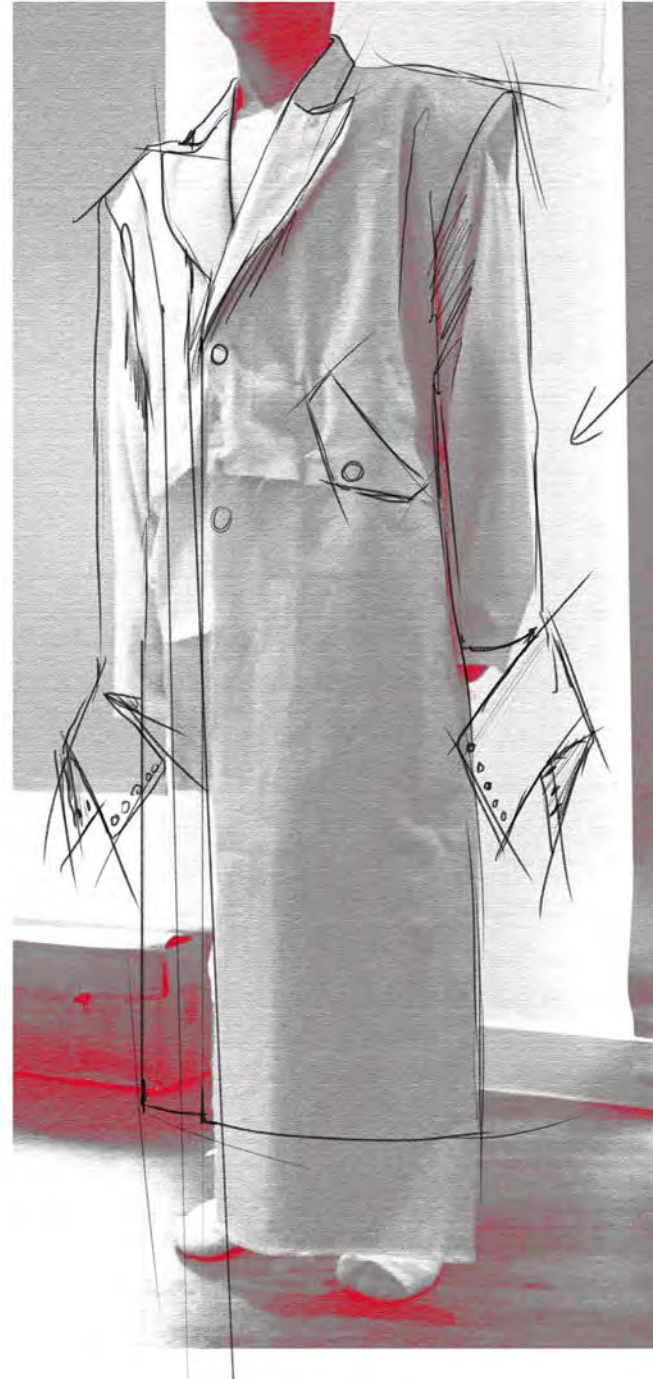




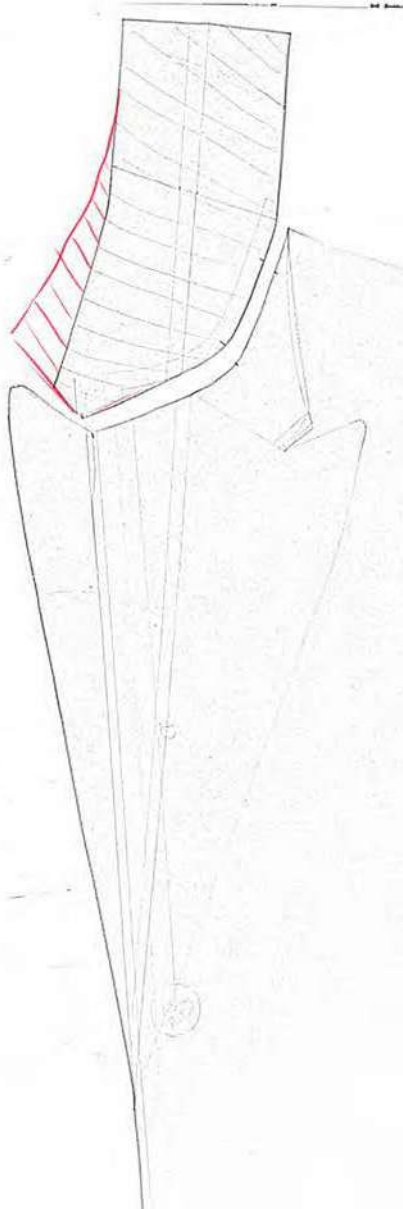
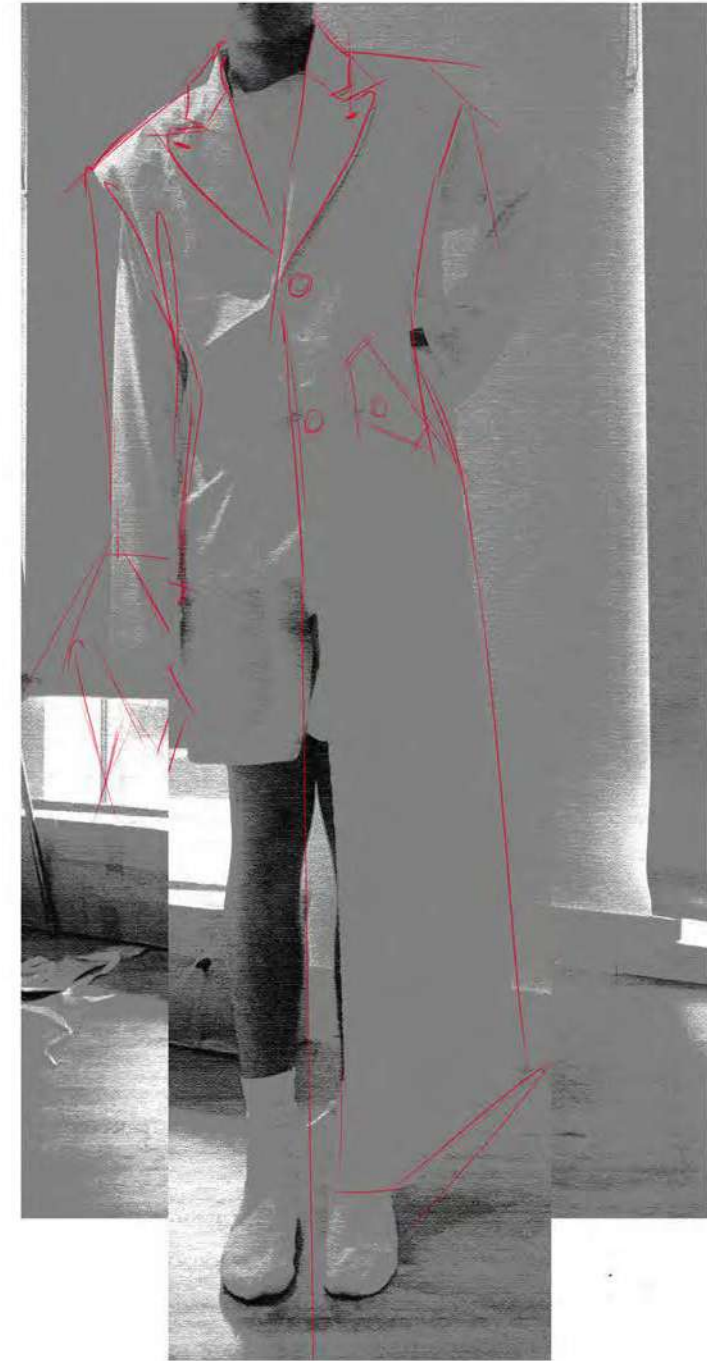




Look 2 Coat Development



slim down  
waist  
↳ tighter fit





Look 2 - Full Outfit





Look 3 - Trouser development





Look 3 - Double zipper trouser with split hem







Look 3 - Rugby Top Development



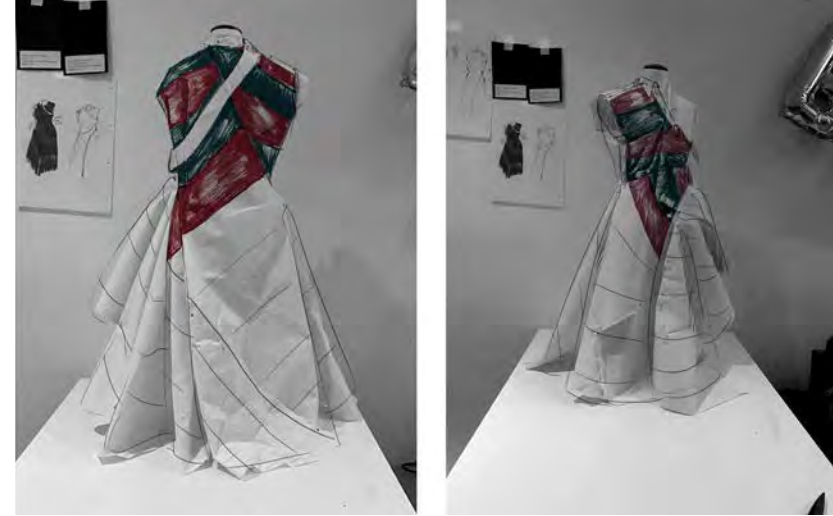
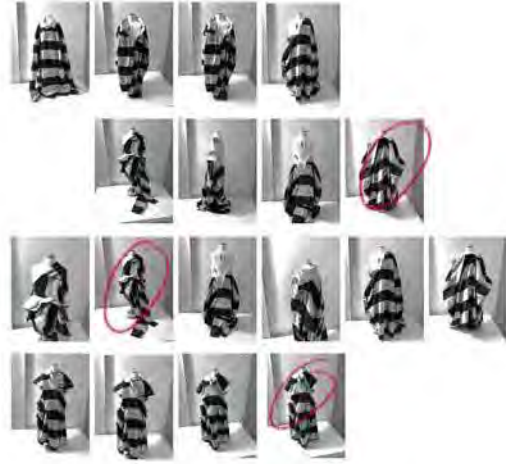


Look 3 - Full Outfit





Look 4 Development





Look 4 fittings and adjustments



add drawstring  
to gather  
+ gives Volume  
& interesting  
Silhouette

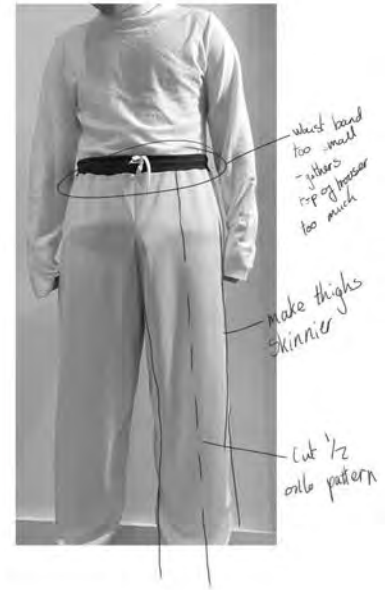


Trouser  
moved to  
look 3





Look 4 - wide fit, paneled joggers





Look 4 - Full Outfit





Make Line Up









# Considered Capsule Brief

In the case of the **Hikikomori**



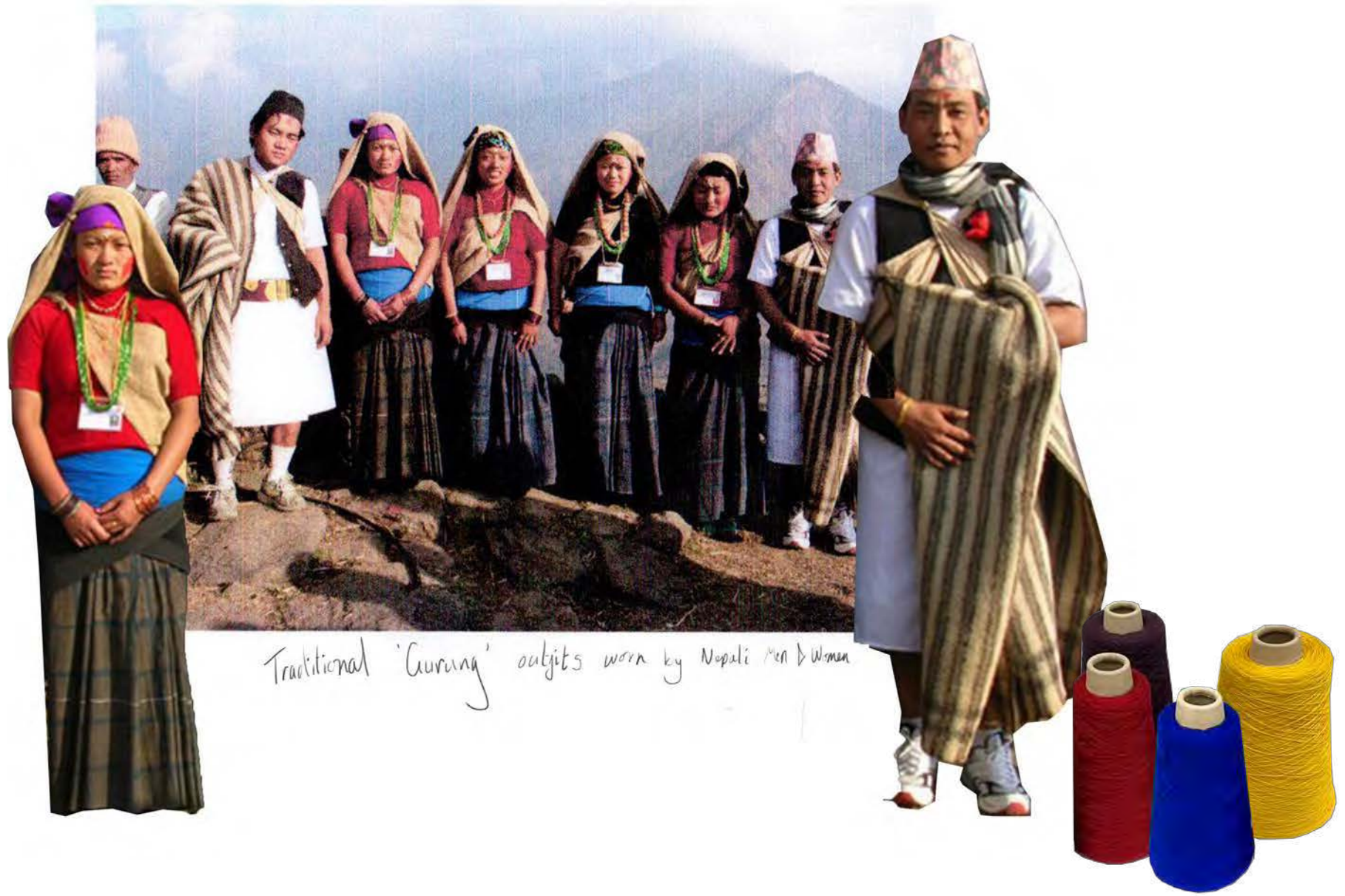
Re-joining society and leaving the comforts of home



**Hikikomori** (Japanese: ひきこもり or 引きこもり, meaning "pulling inward, being confined"), also known as "**acute social withdrawal**", is total withdrawal from society and seeking extreme degrees of social isolation and confinement. Hikikomori refers to both the phenomenon in general and the recluses themselves.







Traditional 'Gurung' outfits worn by Nepali Men & Women



Traditional Nepalese fabric collected from my parents





Yin Xiuzhen

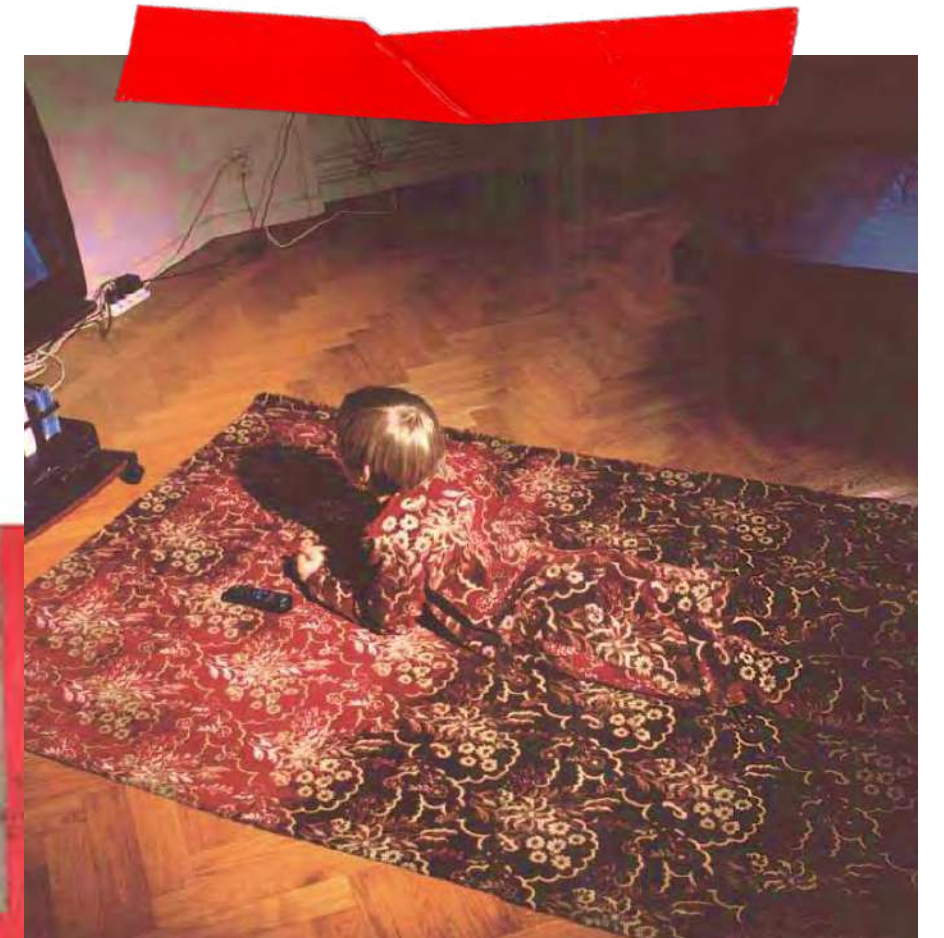


old jobs are not  
disposable commodities  
but materials that  
carry traces of their  
history & the lives of  
the former owners



Finding **security** in your secluded surroundings,  
**camouflaged** from the outside world

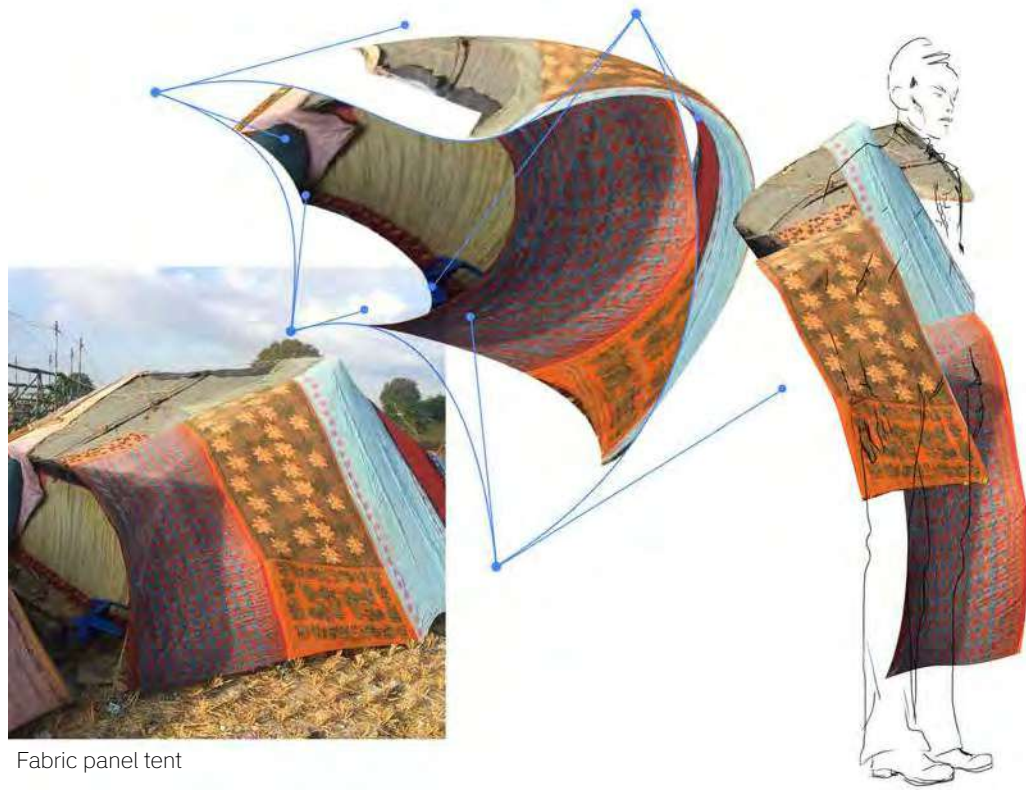




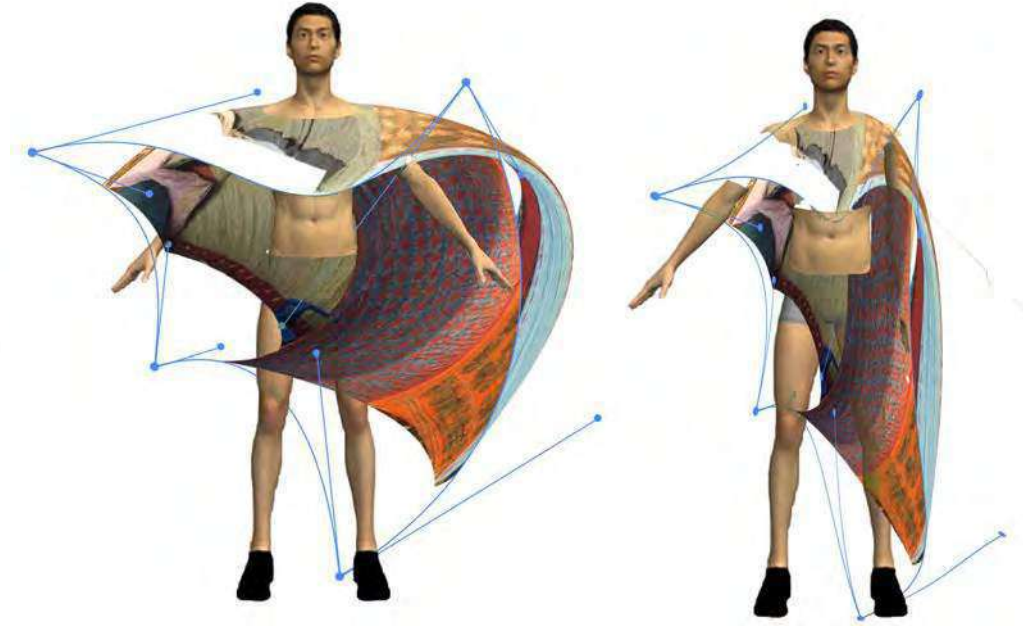
Ge Ba: Chinese textile 'paintings' created from fabrics collected from different parts of China

Anonymous by name, but rich in history and narrative





Fabric panel tent



Digital 'Draping'





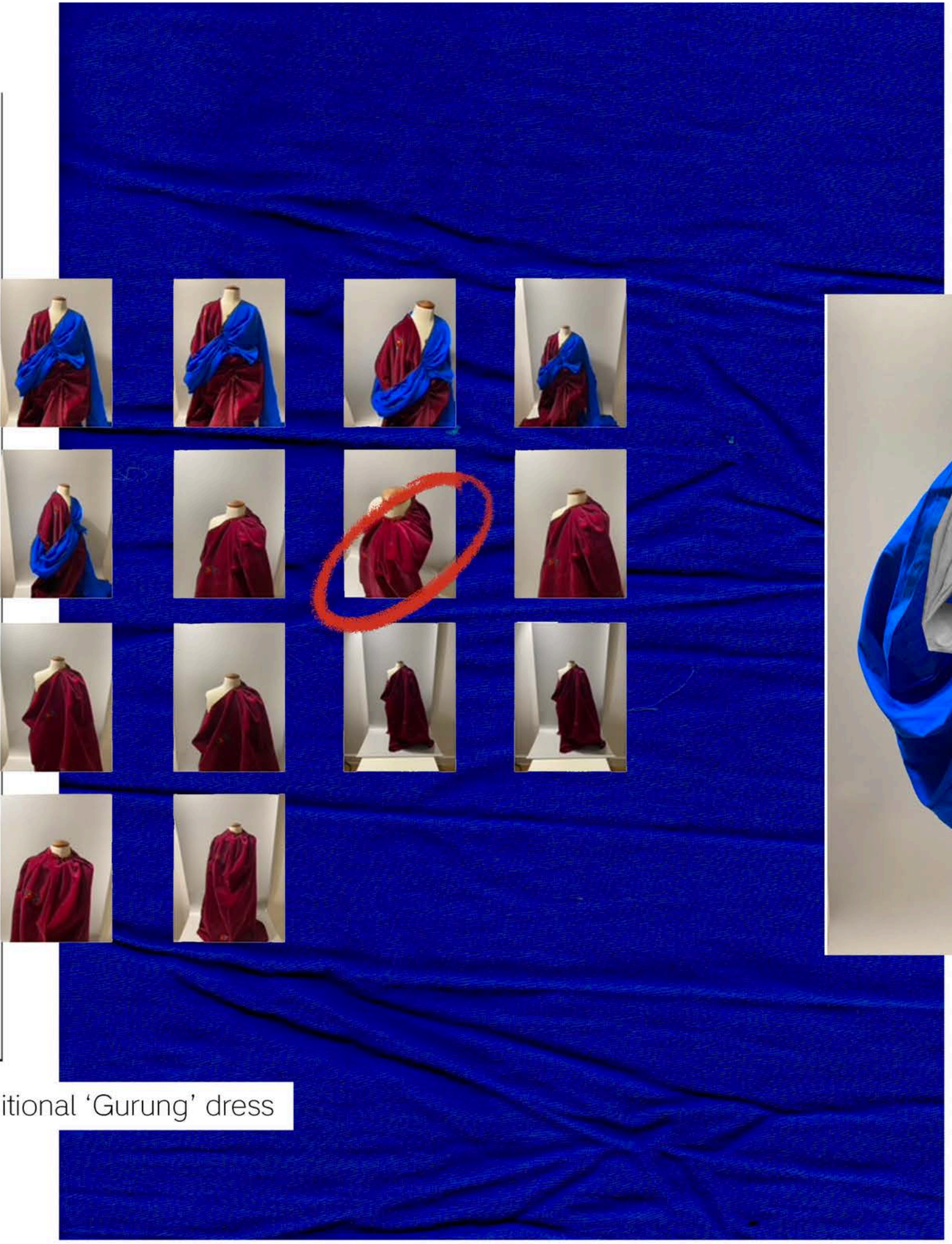
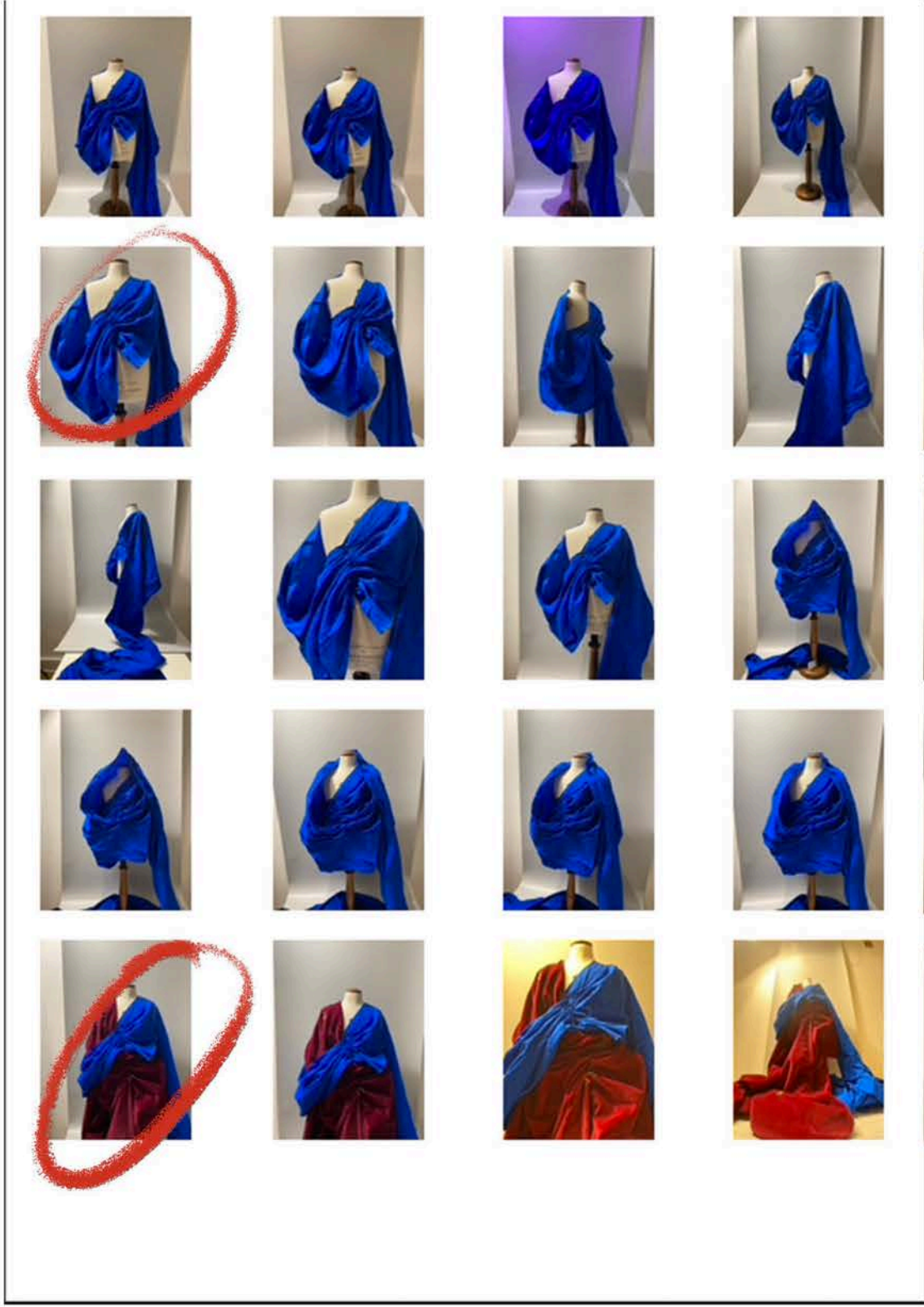


**Madame Grès** – the "queen of drapery"



**Nepalese Royal, 1890** – Photographed in Victorian inspired adaptation of Nepalese formal wear





Drape study using my mothers old traditional 'Gurung' dress







Manipulated scans of sisters hand-me-down **Cholo**, a traditional garment worn by women

