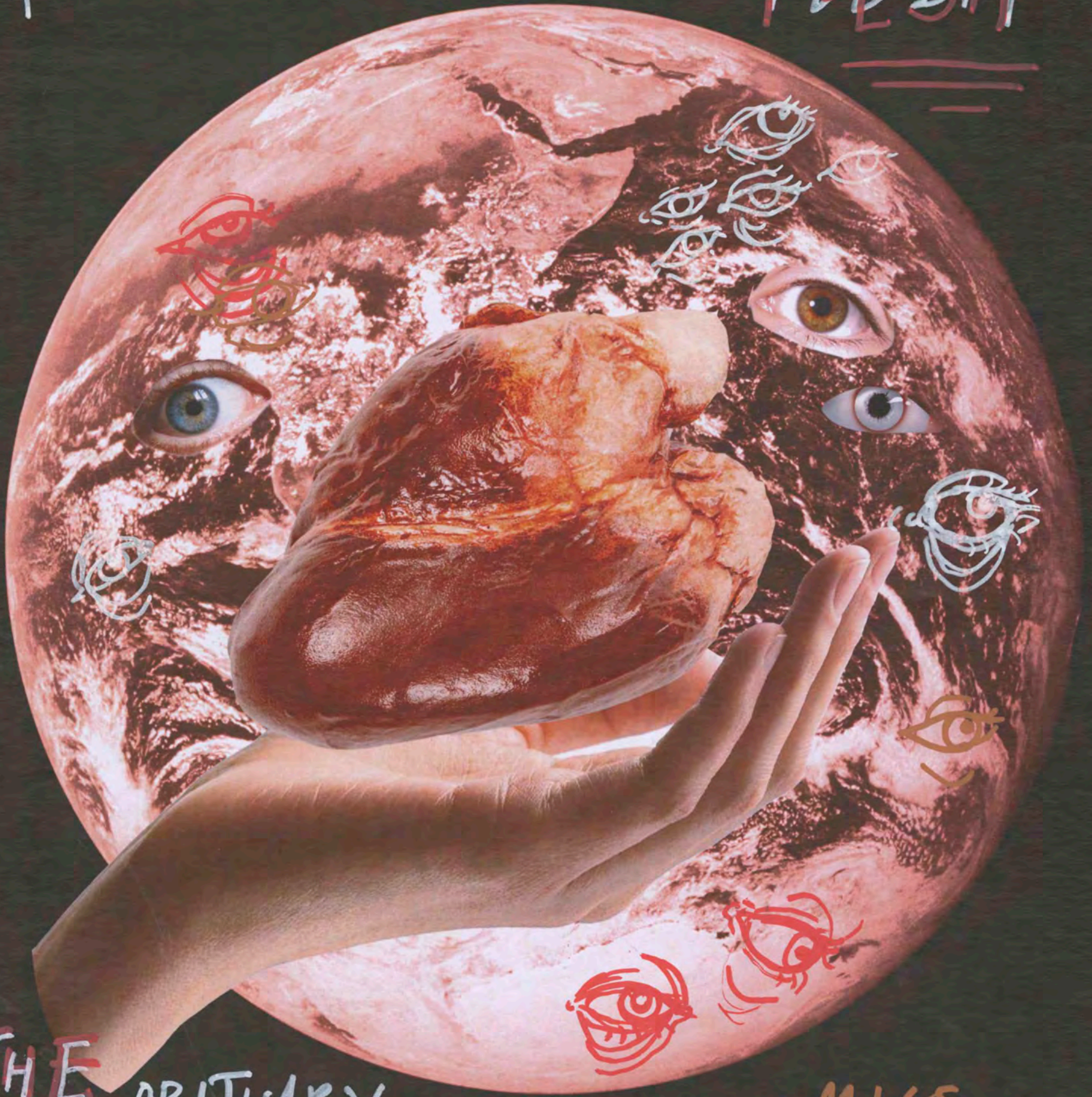


A POETICS OF FLESH



THE OBITUARY
FOR
PLANET
EARTH...

THE DYNAMICS
OF
[DISOBEDIENCE]

IT'S HORRIBLE!

THE HERO PROMETHEUS IS THE SYMBOL OF CONSTRUCTIVE DISOBEDIENCE. ONE MUST DISOBEY THE FATHERS TO OUTDO THEM. TO DISOBEY IN ORDER TO TAKE ACTION IS THE BYWORD OF CREATIVE SPIRITS. THE HISTORY OF HUMAN KIND PROGRESS AMOUNTS TO A SERIES OF PROMETHEAN ACTS. ATTAINED IN THE DAILY WORKINGS OF INDIVIDUAL LIVES, BY THE MEANS OF SMALL PROMETHEAN DISOBEDIENCES. I CAN SAY THAT THERE IS GOOD REASON TO STUDY THE DYNAMICS OF DISOBEDIENCE. THE SECRETS BEHIND ALL KNOWLEDGE.



BE A PUNK IN BONDAGE

7

BONDAGE LEATHER JEWELRY BANDS: Borrow your cat or dog's studded leather collar and wear it around your wrist, neck, ankle, wherever it fits. Black with chrome studs is ideal for the bondage look. Or, if you have an old leather watch strap, you can stud it (buy studs in bike shop) and make a chain to hang from one of your jeans' belt loops.

HANDCUFF BELT: Make a bondage belt by taking a suitable length of heavy-duty webbing or scarf, a strip of leather if you have it, and a leather belt with the buckle cut out. Sew the ends around a pair of toy handcuffs and attach a belt buckle. Looks super punk.

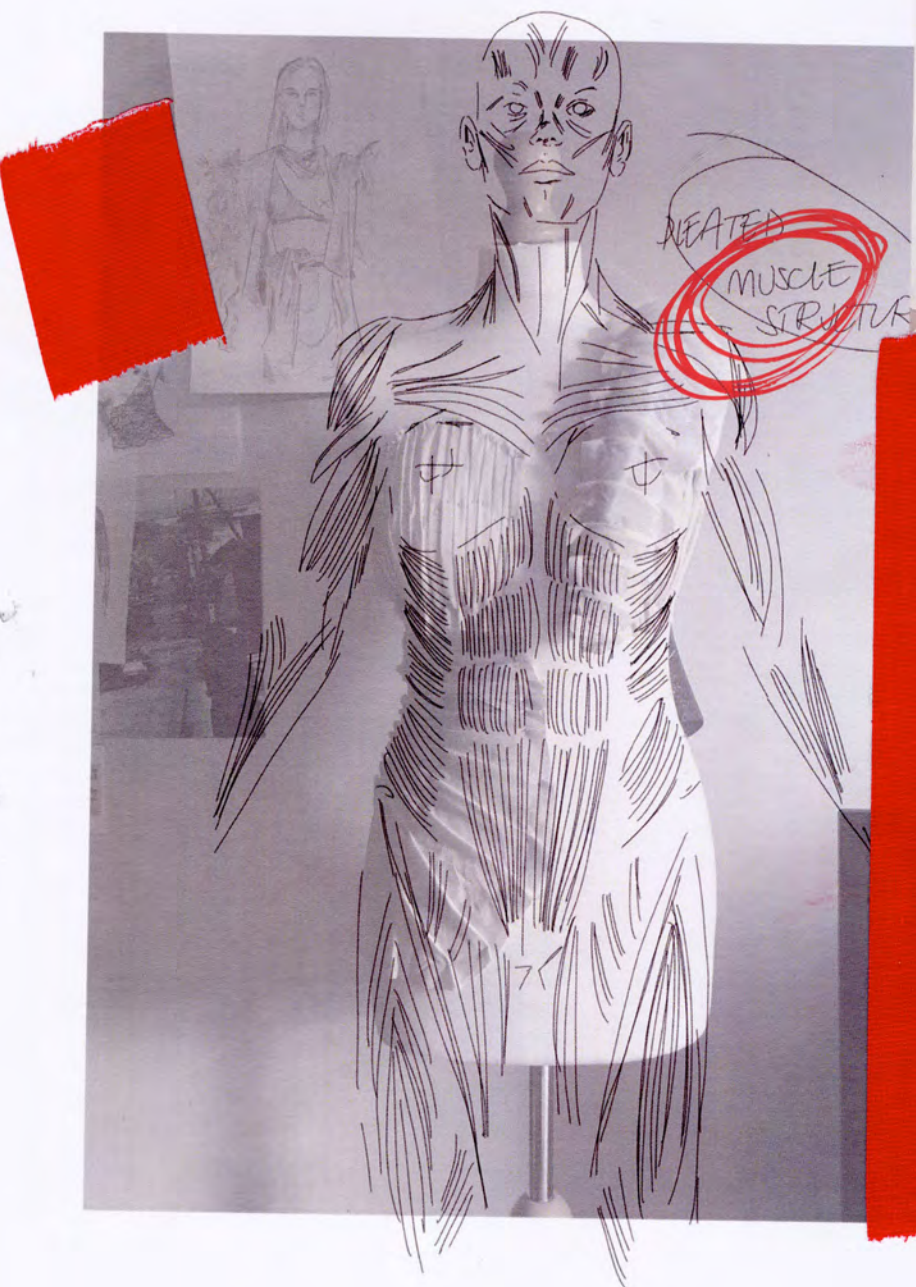
ANKLE CHAIN: As the ultimate in bondage, use any piece of heavy-duty chain that looks right for an ankle bracelet. Attach it with a safety pin, paper clip, or similar device. For fun time, wear an ankle chain and connect between with a set of handcuffs (that you drag along the ground on your trip, you punk!).

Punkers Helen Keller, Belinda and Pleasant Puss in bondage gear





USING SMART
BIOLOGICAL STRUCTURES
 TO INSPIRE DRAFTS
 AND GARMENT
 STRUCTURE



OUTFIT TWO -
 DRAPING AND
 TAILING
 CREATING
 SKELETAL STRUCTURES
 WITH UPFOAMED FOAM
 SUPPORT

FOAM STRUCTURES

BE THE
BACKBONE
 OF THE REBELLION



PROJECT DEVELOPMENT

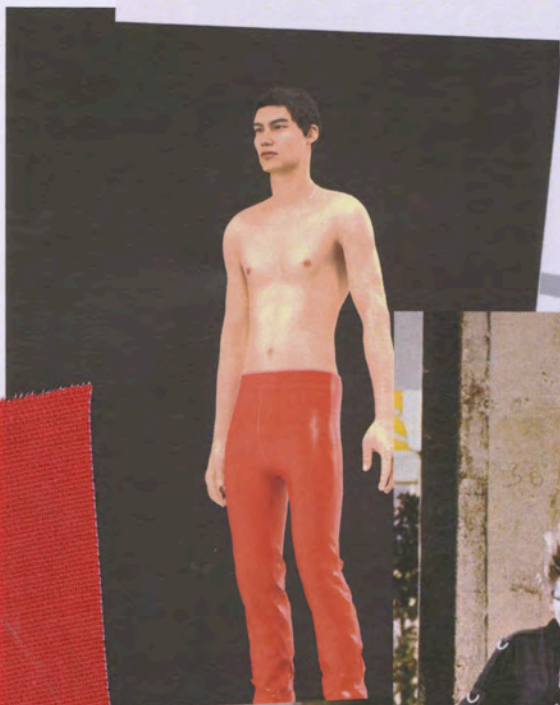
USING DIGITAL DESIGN SOFTWARE

DESIGNS BASIC UNDER STRUCTURE TO ADD AND POTENTIAL FABRICS. OF PATTERNS AS BUILDING BLOCKS TO COMPLEX DETAILING ON TOP.

PROJECT

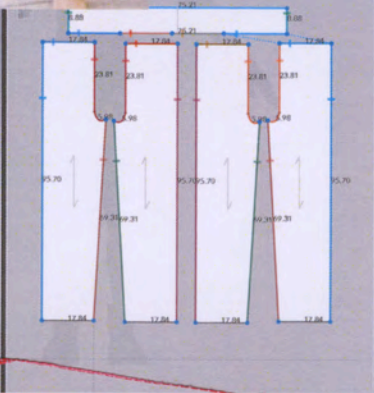
LOOKING AT LEATHER, DENIM, KNIT, HEAVY WOOL & PLASTICS.

FEATURES:
TAILORED TROUSER WITH INVISIBLE WAIST-BAND, SET BACK POCKET & CONTRAST TOP STITCHING.



INSPIRATION

LOOKING AT ANTI-FASHION PROTEST GARMENTS FROM POLITICAL MOVEMENTS + EXTINCTION



REBEL LION'S
RED REBELS



SKETCHES

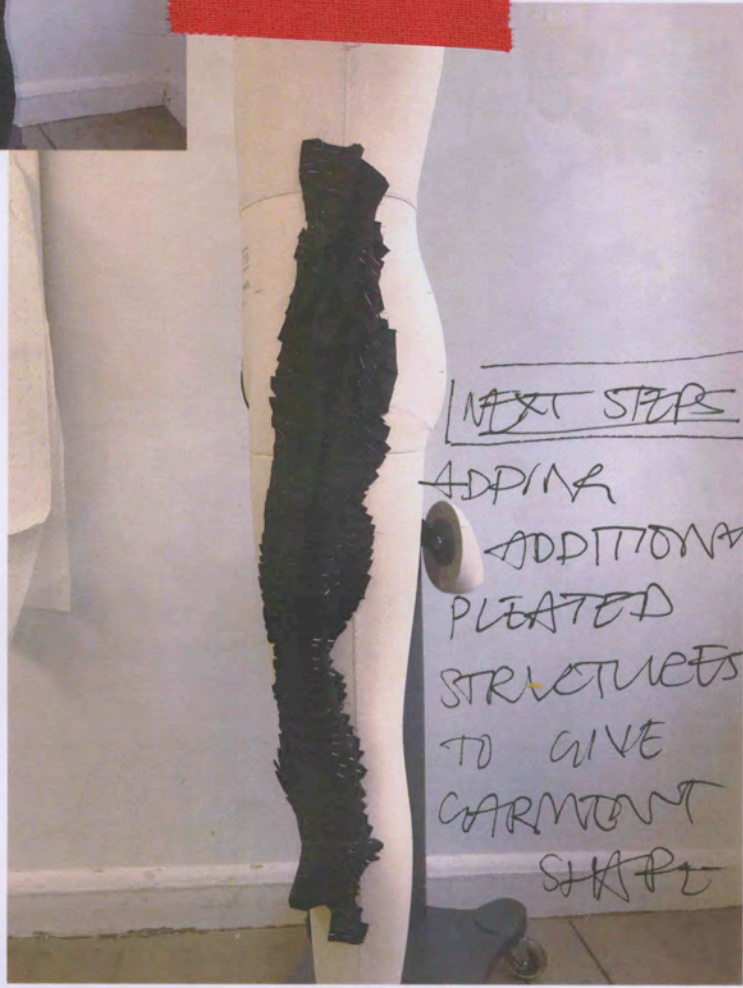


SYSTEM CHANGE NOT CLIMATE CHANGE!



TOILE DEVELOPMENT

USING INITIAL FEEDBACK FROM FIRST TOILE FITTING TO CREATE A DEVELOPED STRUCTURE THAT MORE ACCURATELY PORTRAYS BIOLOGICAL MUSCLE STRUCTURES WITH MORE COMPLEX PLEATING.



NEXT STEPS -
ADDING ADDITIONAL PLEATED STRUCTURES TO GIVE GARMENT SHAPE



CURVING & ADJUSTING TO BODY



DRAPED STRUCTURE
BY SPINNING

PLEAT DESIGN

SILHOUETTE



NEXT STEPS:

RESEARCHING PRINT IDEAS FOR
SECOND USE



TOILE
DEVELOPMENT



THE DRAPE!

HAND-PLEATED

STRUCTURED PLEATED VINYL -

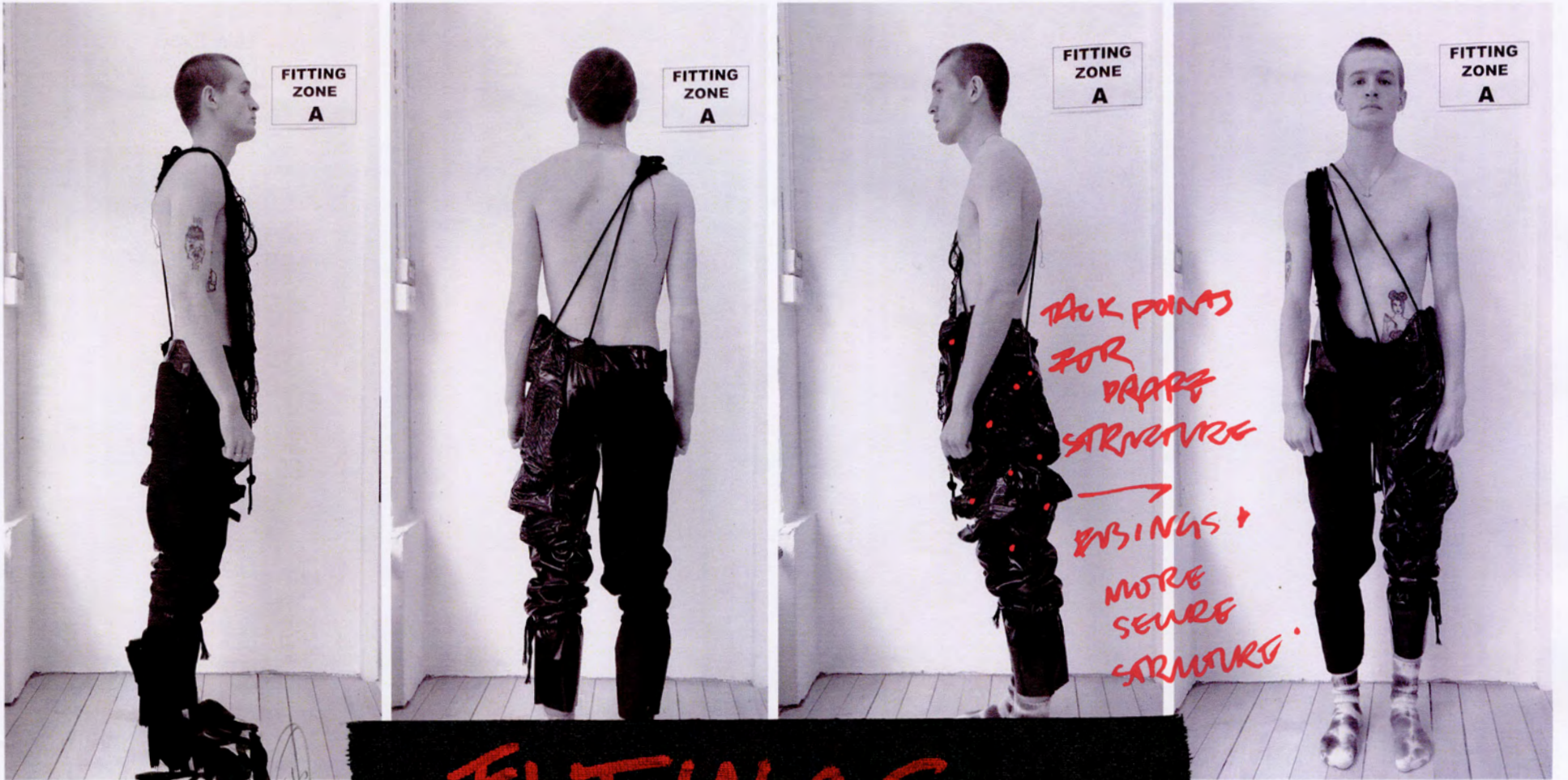
CREATING A COMPLEX

BIOLOGICAL STRUCTURE -

FLAKINESS AND

ADJUSTED USING A

CURVED 'STROP' WAISTBAND.

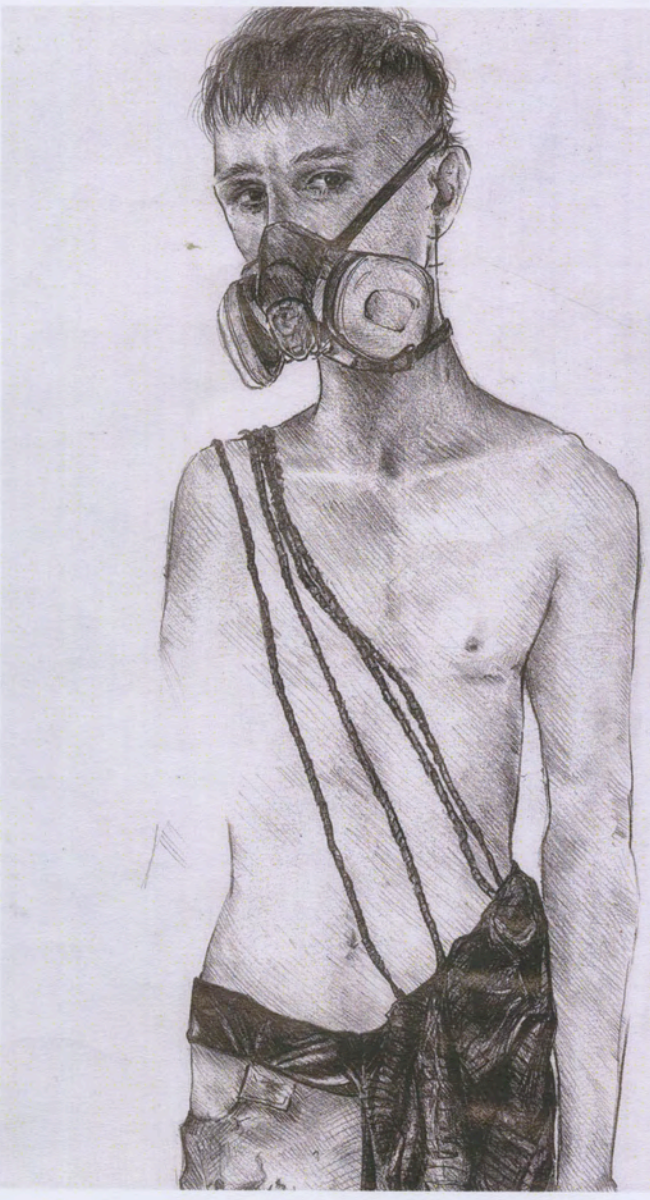
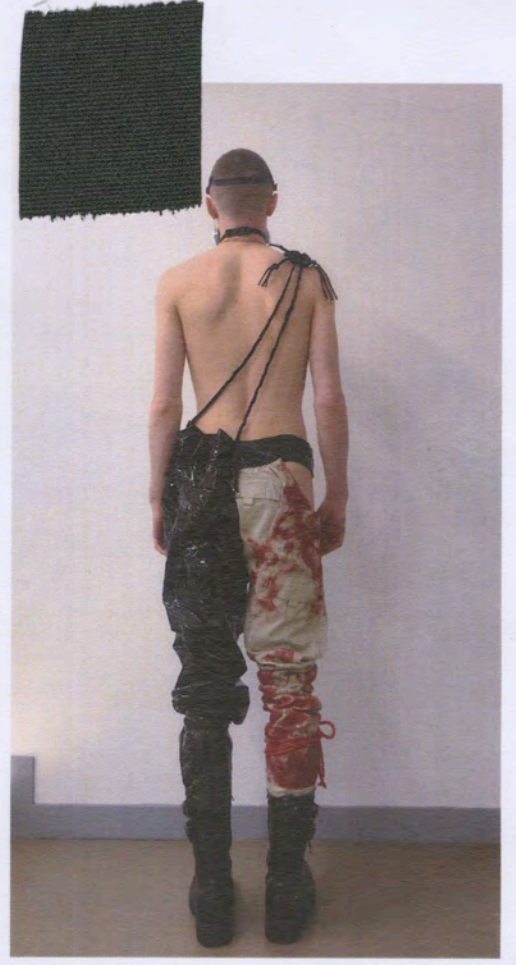
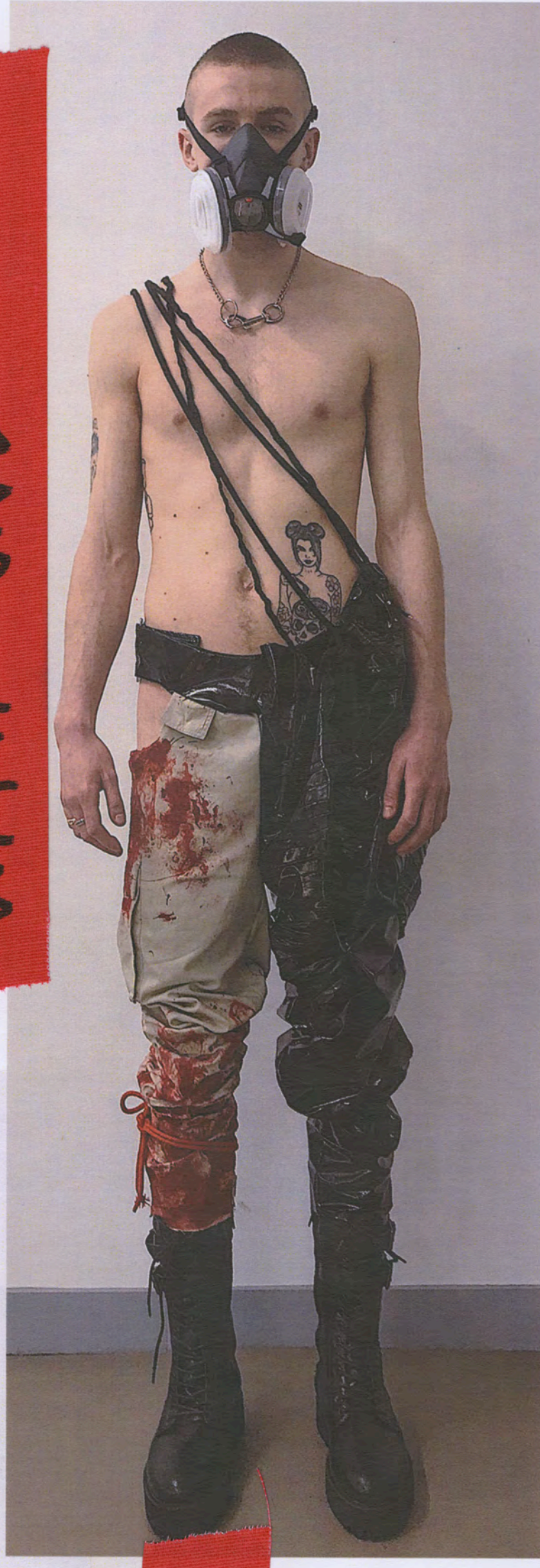


FITTING 9 S



HARNESSED TROUSER WITH
TEXTURED LEG PRINT, AND
PLEATED VINYL STRUCTURE, AND
CURVED SCOOP, WAISTBAND

OUTFIT ONE



BLOOD

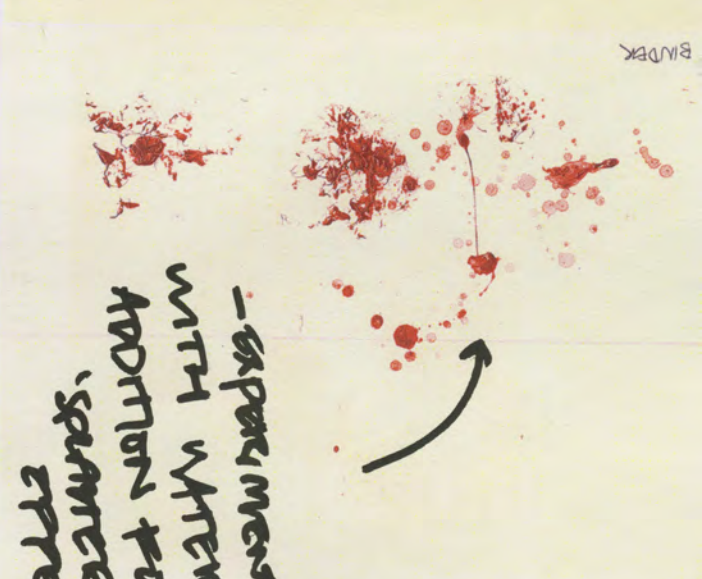
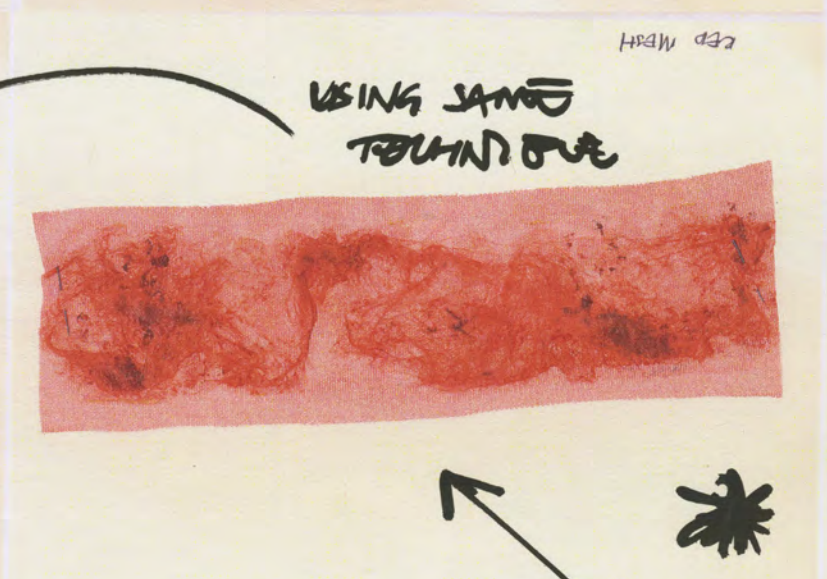
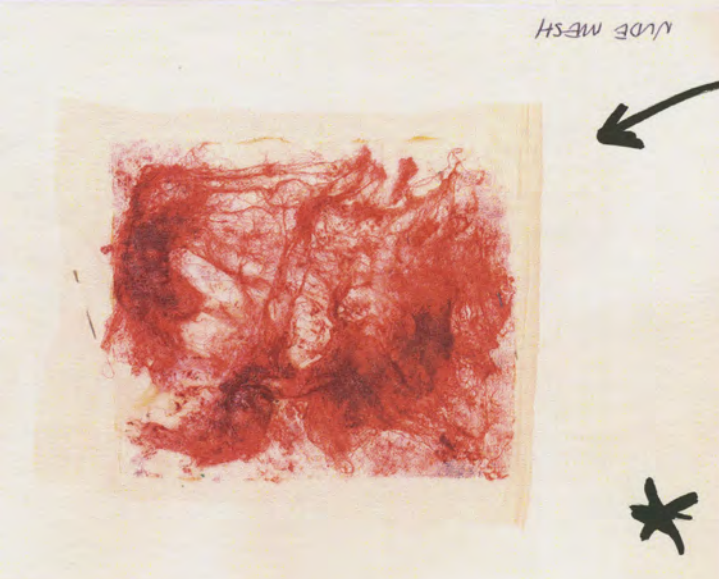
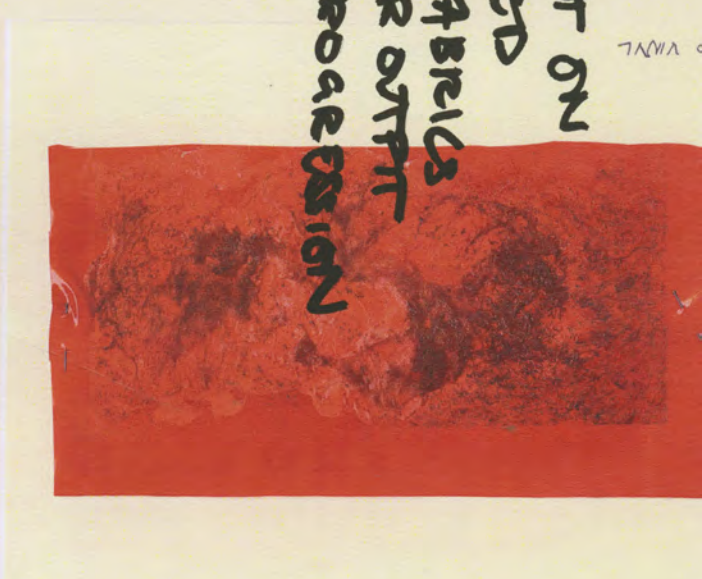
using different upcycled materials to create versions of wearable faux flesh and bloody textures

the use of blood is linked to the representation of the destruction caused by climate change through the human body; specifically blood imagery -

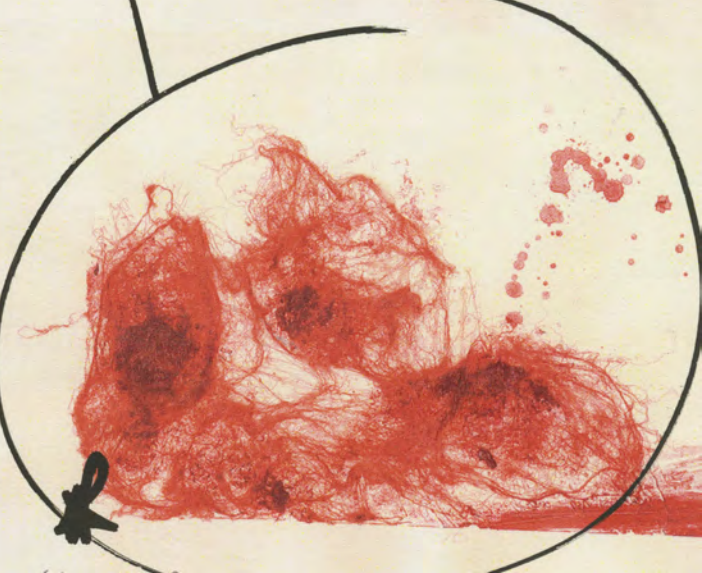
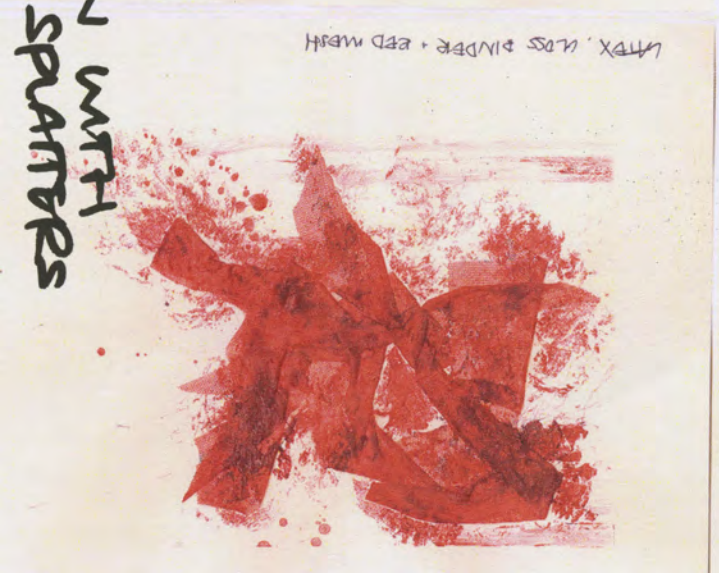
as used by the subgroup of extinction rebellion the RED REBELS

all fabrics and fibres have been either upcycled or recycled - coated with latex and coloured with gloss binder to achieve the desired effect

- TEST ON MIXED FABRICS FOR OPTIMAL PROGRESSION



- experiment with water addition for 'splat' effect



EXPERIMENTATION WITH SPATTERS & SPLATS

USING SAME TECHNIQUE

LATEX

LATEX



F

L

E

S

H

F

A

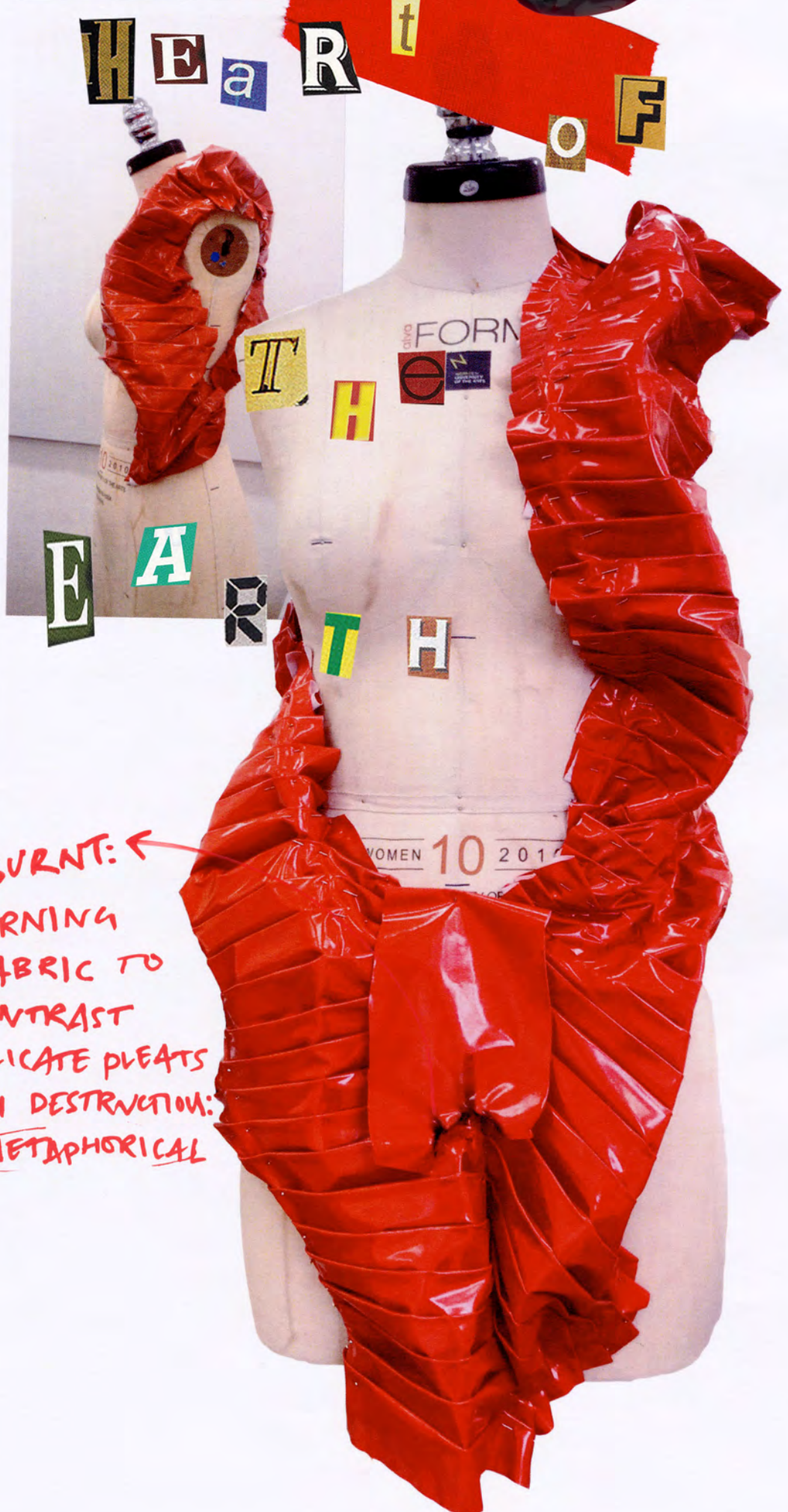
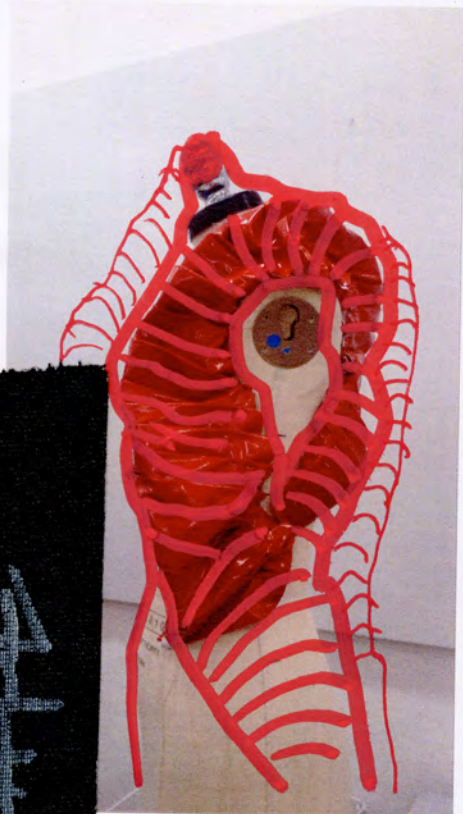
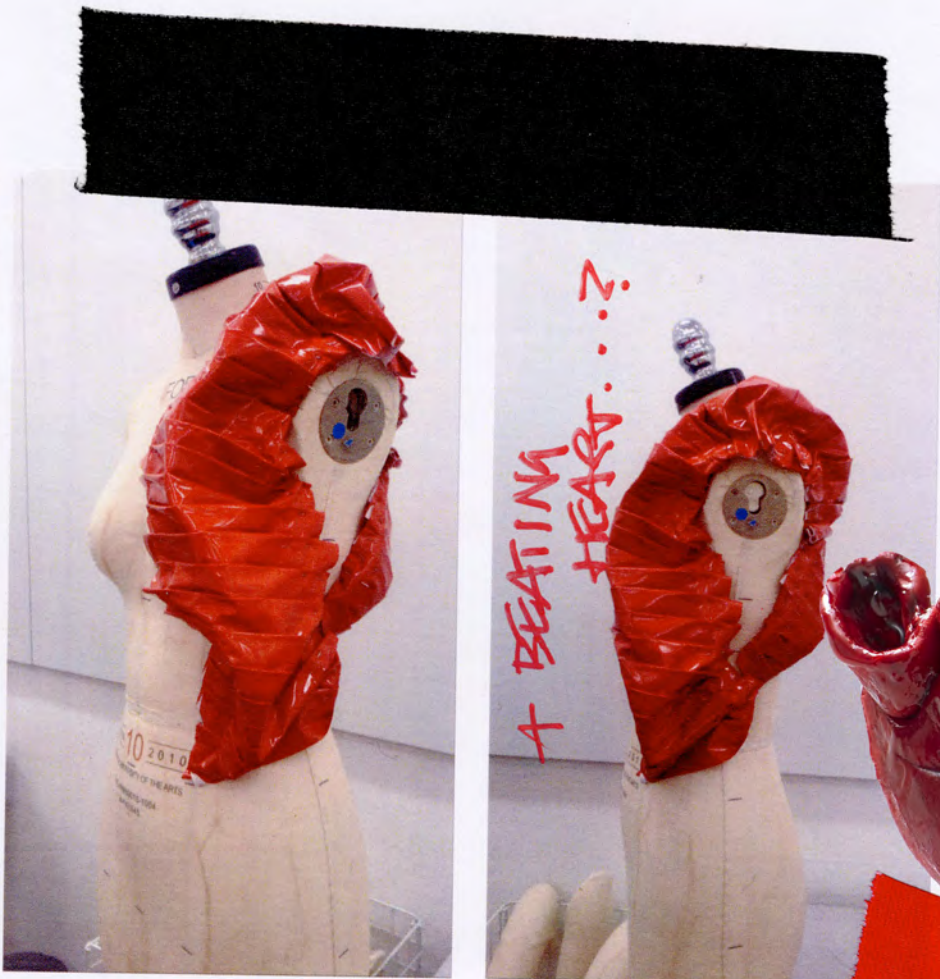
S

H

I

O

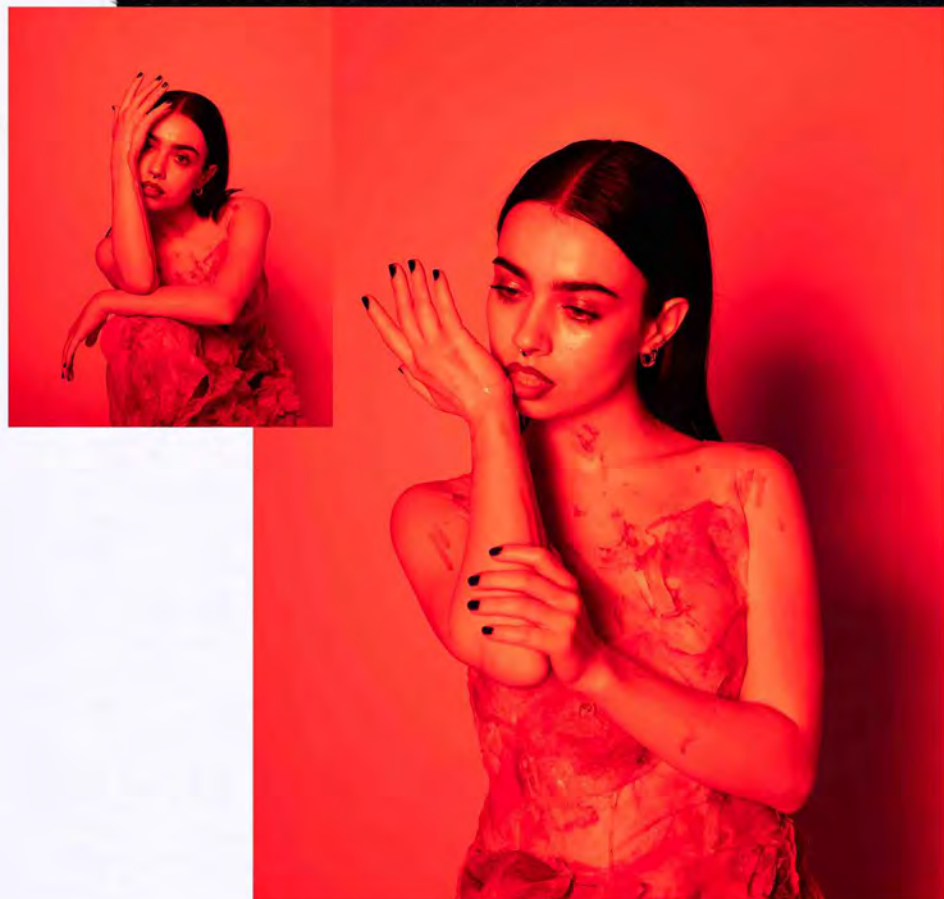
N



WTFIT 4: DRAPE

BURNT: ←
BURNING
FABRIC TO
CONTRAST
DELICATE PLEATS
WITH DESTRUCTION:
METAPHORICAL

FLESH...



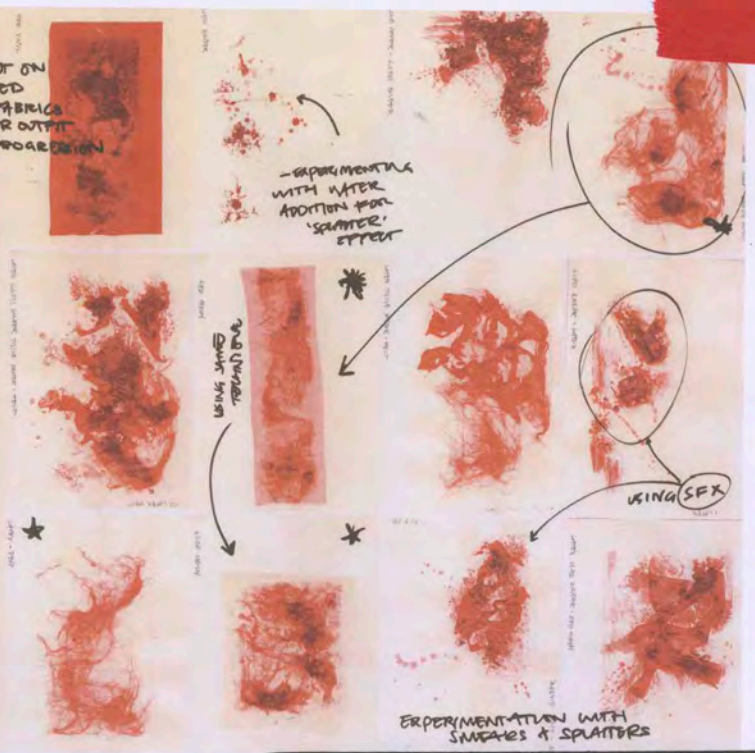


'FLESH DRESS' -
 FELTING FIBRES COATED IN
 LATEX SIMULATING
 BLOODED FLESH, SUPTO TO
 BODY



BLOOD

using different upcycled materials to create versions of wearable latex, flesh and blood textures through the use of blood is linked to the representation of the destruction caused by climate change through the human body; specifically blood imagery as used by the subgroup of extinction rebellion (RED REBELS) all fabrics and fibres have been either upcycled or recycled with latex and coloured with gloss binder to achieve the desired effect



OUTFIT TWO



HAND PAINTED
COTTON

RED
MESH
COATED
W/ FELT
&
LATEX

RECYCLED
KNITS

FABRICS

NUDE FOX
LEATHER,
MESH

SPUNNED
VINYL &
FOX
LEATHER

COTTON
+ TEXTILE
EXPERIMENTS

FELT
COATED WITH
LATEX

RED COTTON CANIS MIX
WITH FELT & LATEX









