



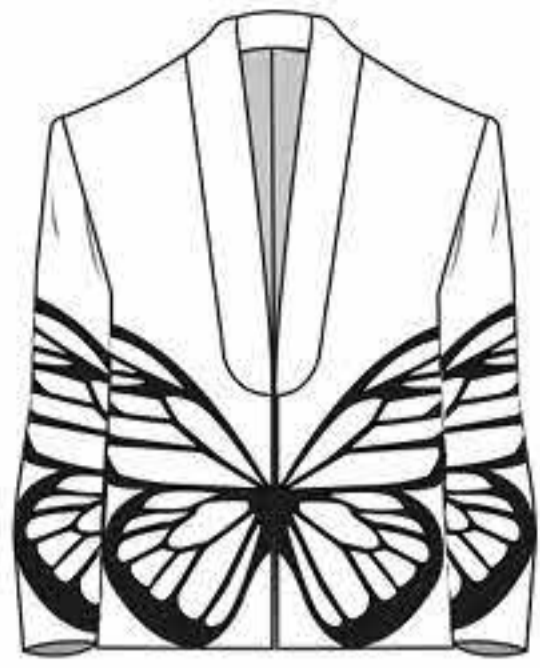
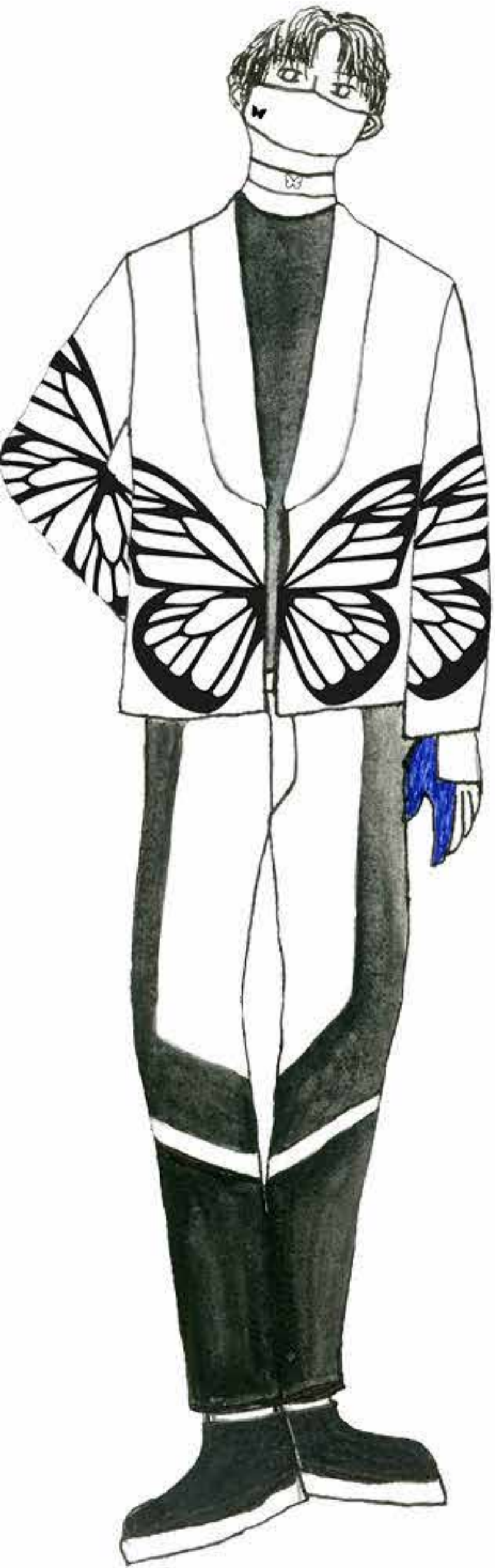
BUTTERFLY



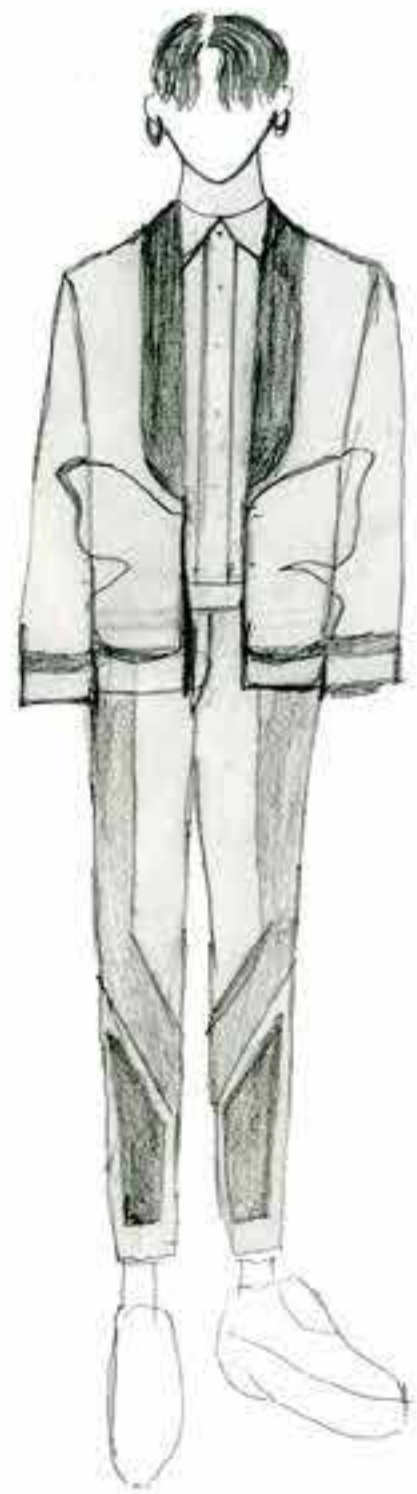




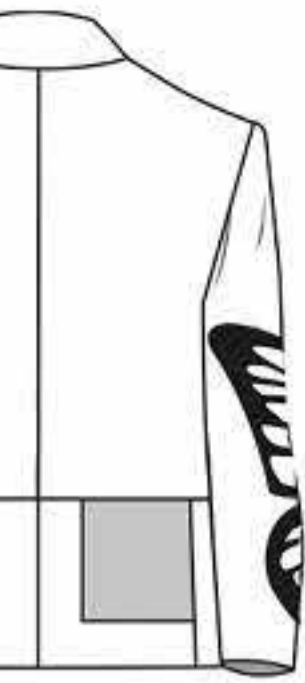




Too long and baggy,
at least 15 cm
decrease and change



Faux leather t
8cm higher an
the bottom pi
inside



Attach sleeves to show shape and heat press laser cut butterfly for position



at center point



Waist reduce to 2cm



0-2cm decrease the bottom

to go and trap piece



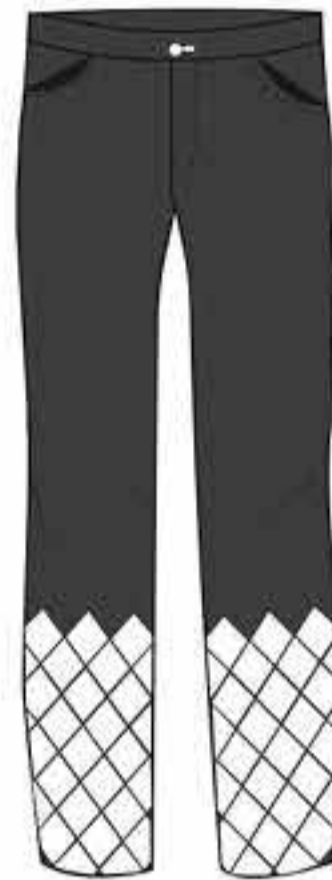


perfect length so
just add extra
hem for facing



Lower waist belt to
match butterfly crop





Laser cut faux leather flowers and then heat press



Make waist belt in cotton not faux leather



Heat press around two times over 143 c

