

CHARLES JEFFREY

LOVERBOY

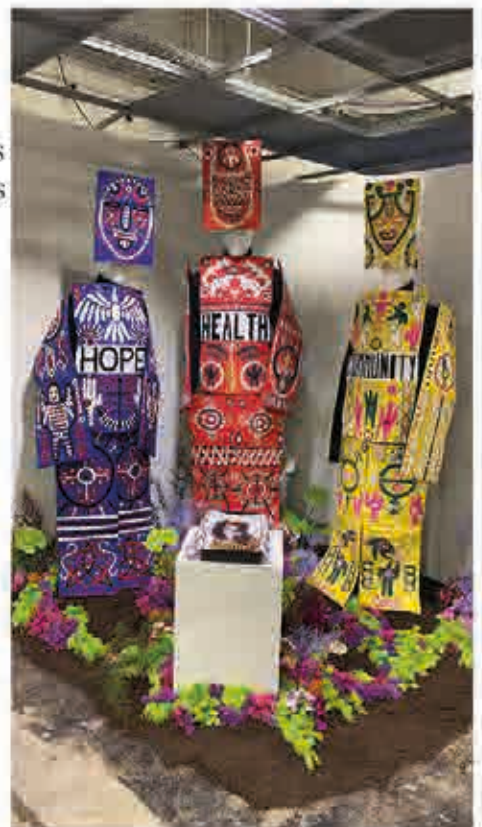
<https://www.vogue.com/fashion-shows/spring-2021-ready-to-wear/charles-jeffrey-loverboy>

“Our interns, god bless them, had started with us bright-eyed, bushy-tailed, and excited about working on the collection. I didn’t want to take that experience away from them, so we set a craft project they could work on remotely.” Community, Health, and Hope are the emblems in the Loverboy panels of protective armor, embroidered by interns in isolation.



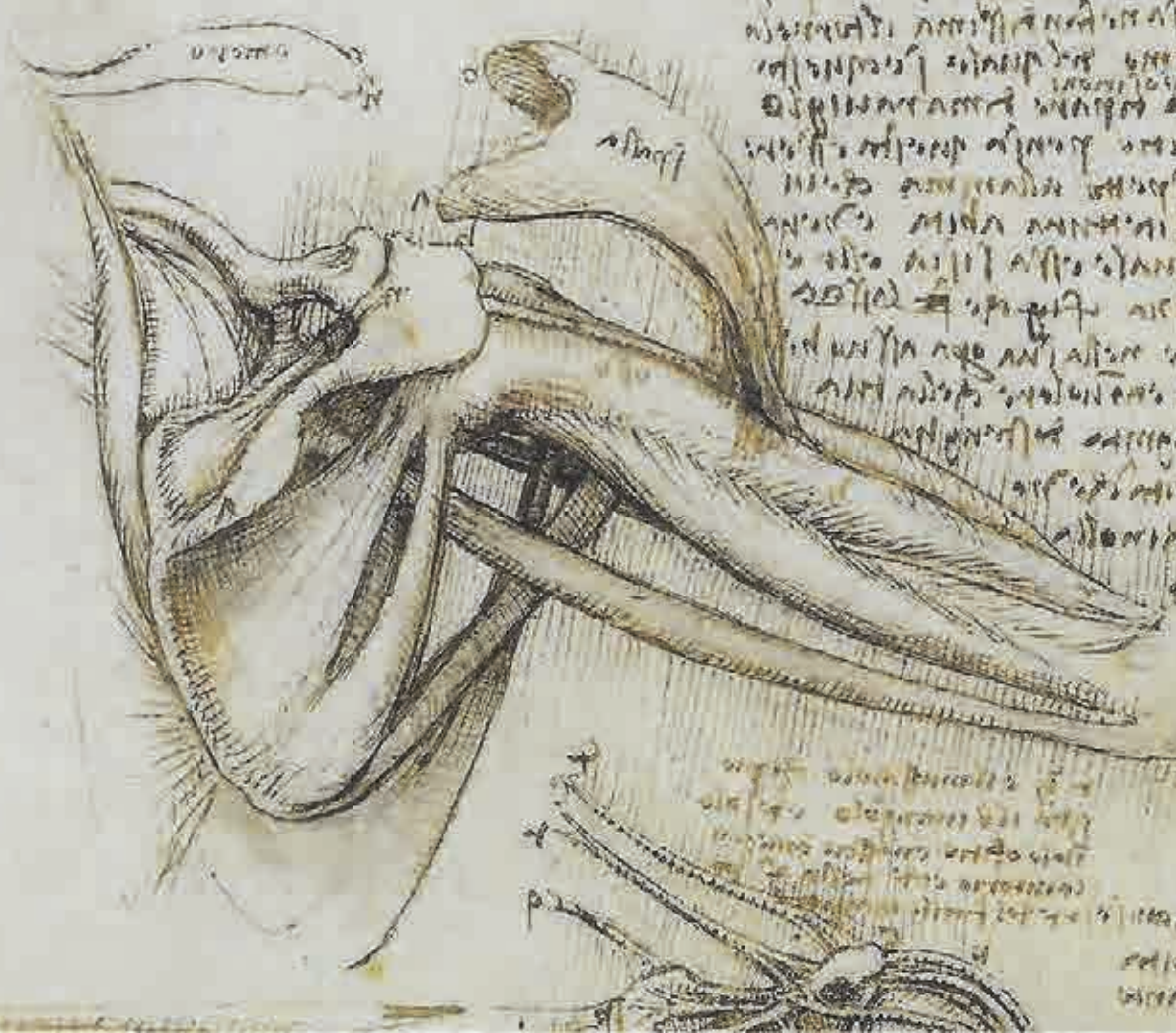
<https://www.vogue.co.uk/news/gallery/charles-jeffrey-loverboy-ss21-everything-you-need-to-know>

After lockdown forced Jeffrey to send his interns home, he came up with a new way of involving them in the making of the collection. “I was thinking about the idea of ‘localised couture’ from last season. How does that work when you’re in your living room, and how do we apply it to our interns? I drew and designed [the suits] to be posted to them with fabric and sewing needles, and they all had to embroider them over the five months.”



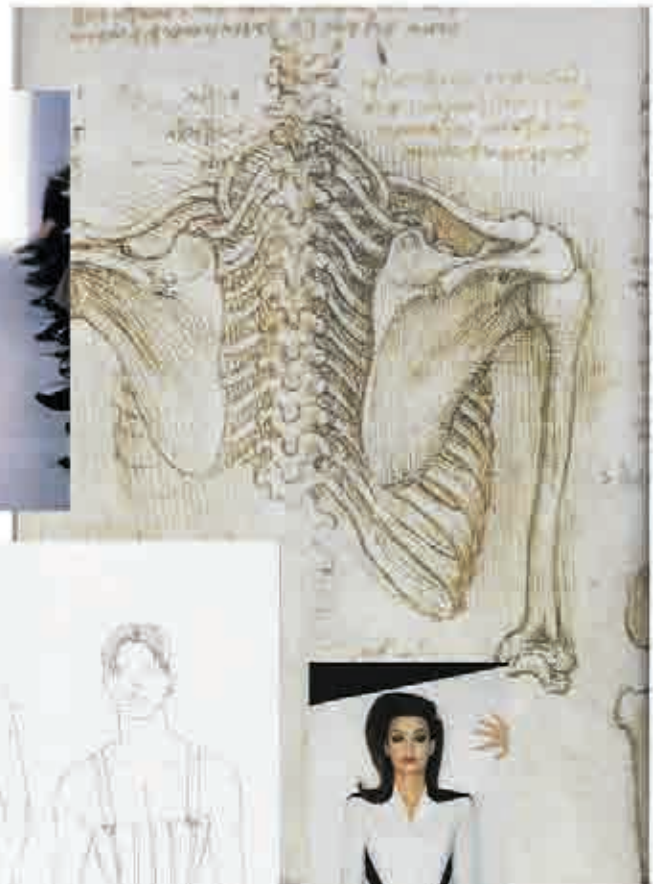
PRE-COLLECTION

Handwritten text at the top left of the page, likely a title or section header.



Main body of handwritten text on the right side of the page, providing detailed descriptions or annotations related to the anatomical drawing.

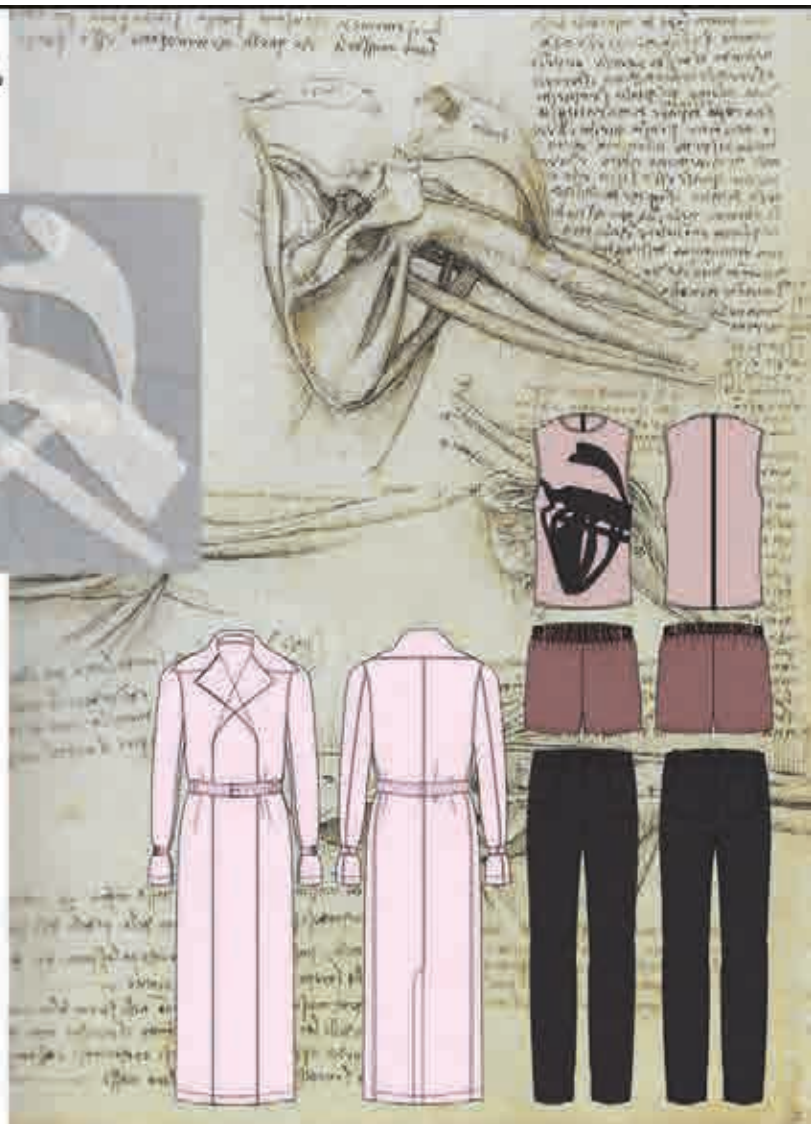








**SHOULDER
SHEER
LAYERED**









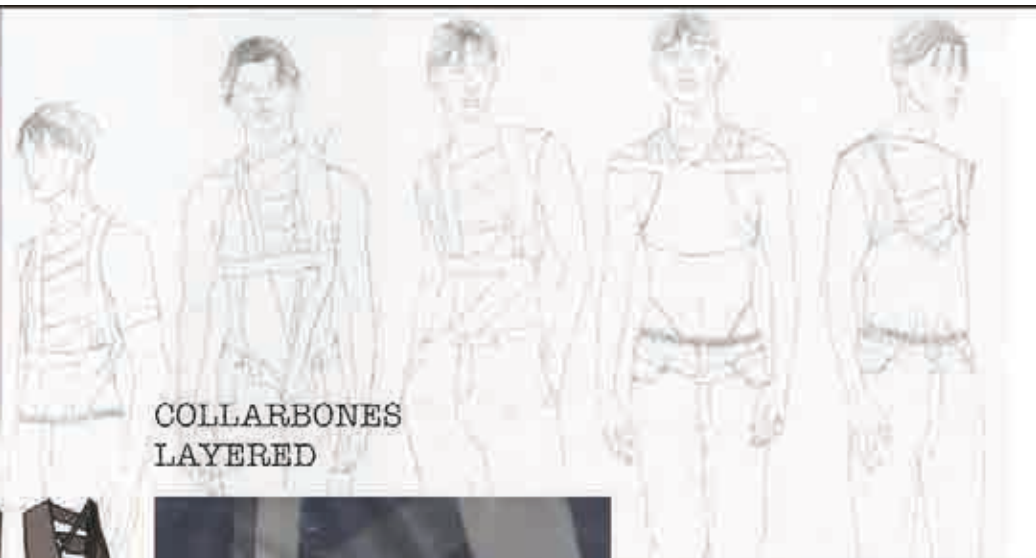
BINDING DETAIL
STRAPS
LIGAMENTS
SLIPDRESS
SHEER











COLLAR BONES
LAYERED















OUTFIT 1

- appliqued detail
- covered buttons
- elastic waistband
- metal zip
- binding raw edges
- double hem on trench

OUTFIT 2

- jet pockets
- single button
- covered buttons on sleeve
- binding used as detail
- binding raw edges
- elasticated waistband

OUTFIT 3

- facing
- jet pockets
- zip
- button
- binding raw edges of trousers

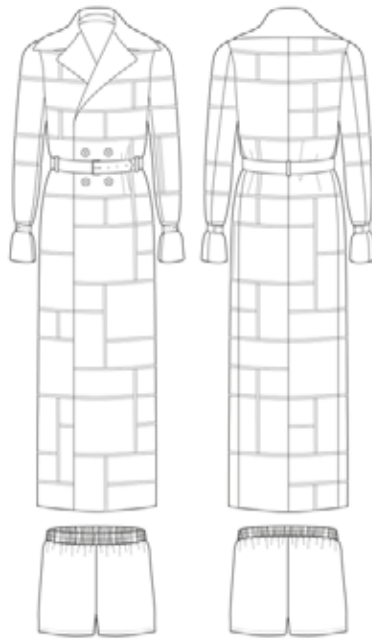
OUTFIT 4

- pin hem
- elasticated waistband
- appliqued trouser detail
- metal zip
- button
- binding raw edges of trousers



OUTFIT 5

- elasticated binding
- metal zip
- button
- stitch detail



OUTFIT 6

- binding detail
- 3 buckles
- 3 belts
- 4 buttons
- elasticated waistband



OUTFIT 7

- stitching binding together for top
- elasticated waistband
- binding for trouser detail
- zip
- button
- jet pockets
- binding raw edges of trousers



OUTFIT 8

- channels for ruching
- binding raw edges
- elasticated waistband



OUTFIT 1



OUTFIT 2



OUTFIT 3

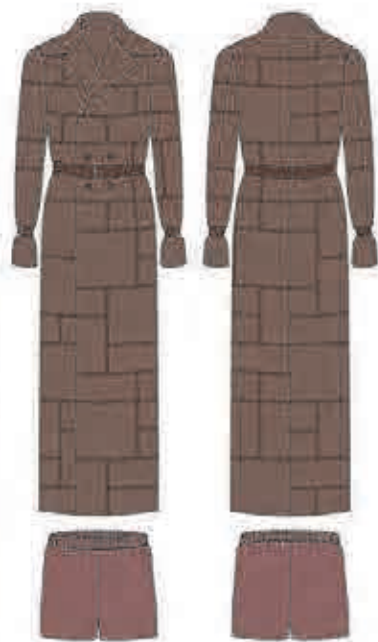


OUTFIT 4





OUTFIT 5



OUTFIT 6

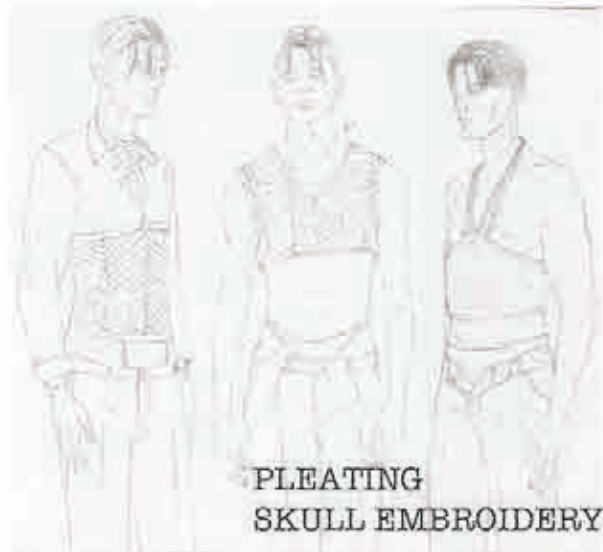


OUTFIT 7

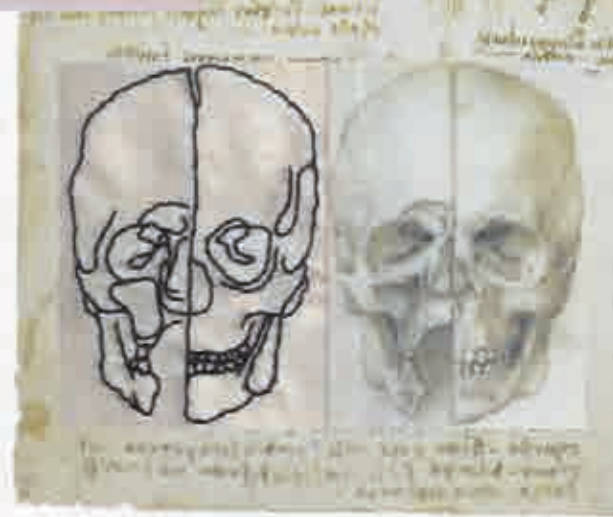
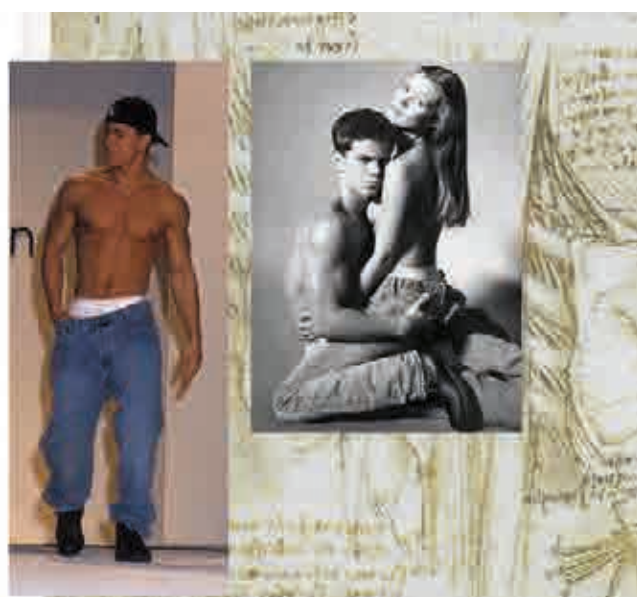


OUTFIT 8

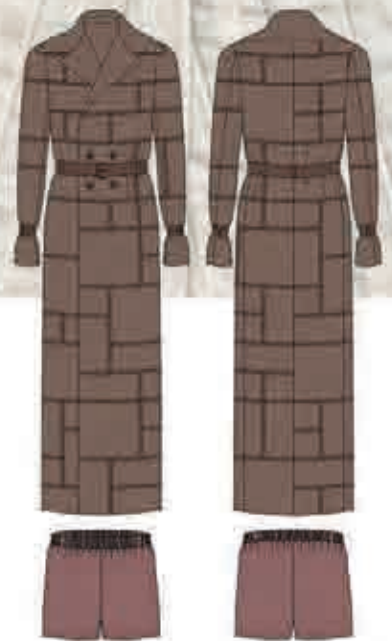
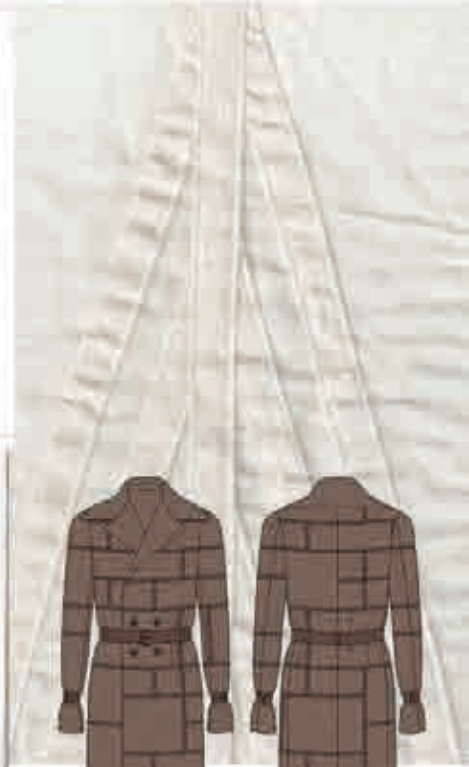




PLEATING
SKULL EMBROIDERY



BINDING DETAIL
PATCHWORK
ARTERY





BINDING DETAIL
STRAPS
LIGAMENTS





PLEATING
GATHERING
ARTERY



TAILORING PROJECT

A black and white vintage fashion advertisement. The scene is set outdoors on a paved area. In the foreground, two women are walking towards the right. The woman on the left is wearing a light-colored, short-sleeved, tiered dress with a fitted bodice and a long, flowing skirt. She is also wearing a large, wide-brimmed hat with a veil and a long necklace. She holds a dark umbrella with a light-colored, feathery top. The woman on the right is wearing a similar light-colored, short-sleeved dress with a tiered skirt and a wide-brimmed hat with a decorative band. She is also wearing a necklace and holding a small, dark, round bag. In the background, a man in a dark suit and white trousers is walking towards the left. Other people in similar attire are visible in the distance. The overall style is characteristic of the 1920s fashion era.

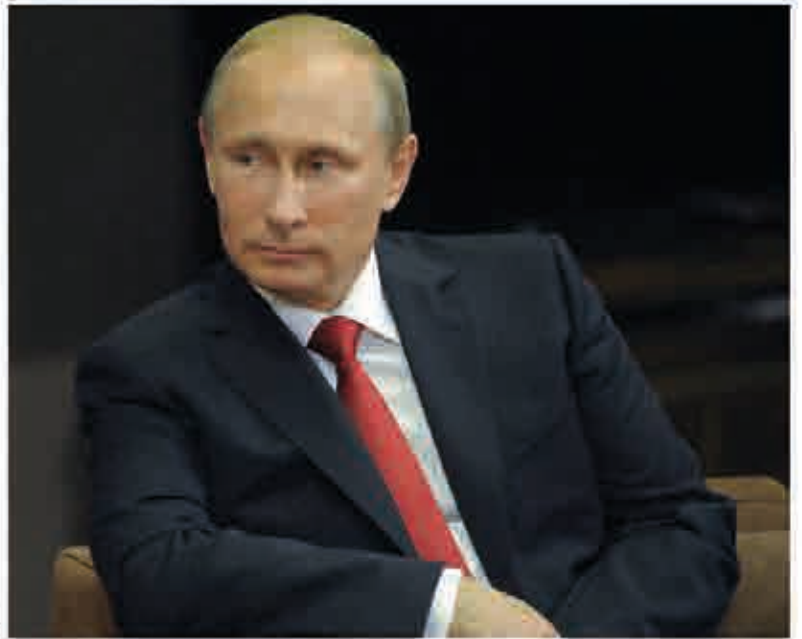
EVE'S RIBS











**"BLACK IS ASSOCIATED WITH POWER, FEAR, MYSTERY, STRENGTH, AUTHORITY, ELEGANCE, FORMALITY AND SOPHISTICATION."
- LGFG Fashion House Blog**





- REDUCED DEPTH OF THE PLEAT
- TOOK IN THE BACK
- LOWERED ANGLE OF THE LAPEL
- EXTENDED ARMHOLE



- ADDED 1CM TO THE BACK OF JACKET COLLAR
- REDUCED LENGTH OF OVERLAP ON WAISTBAND

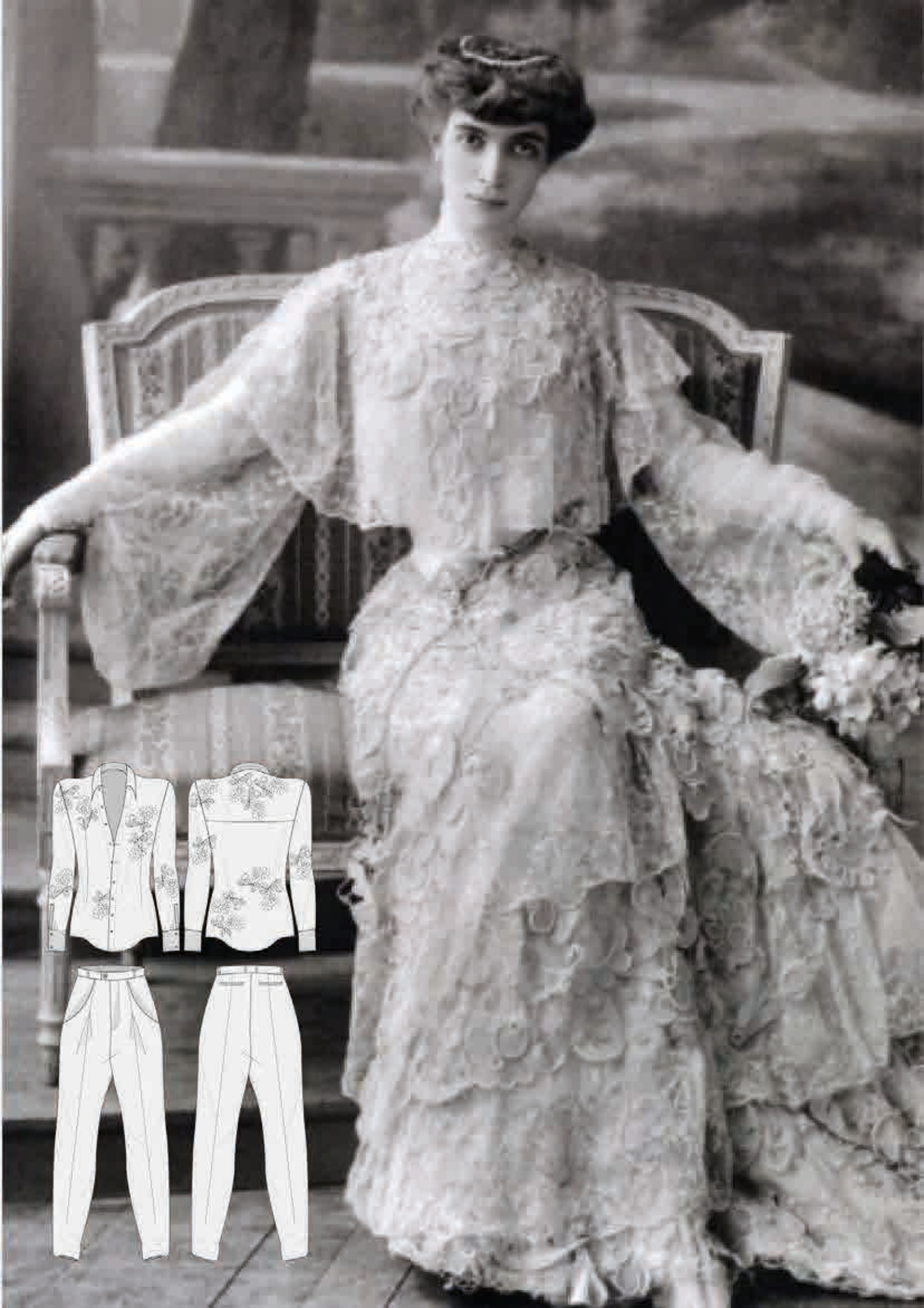






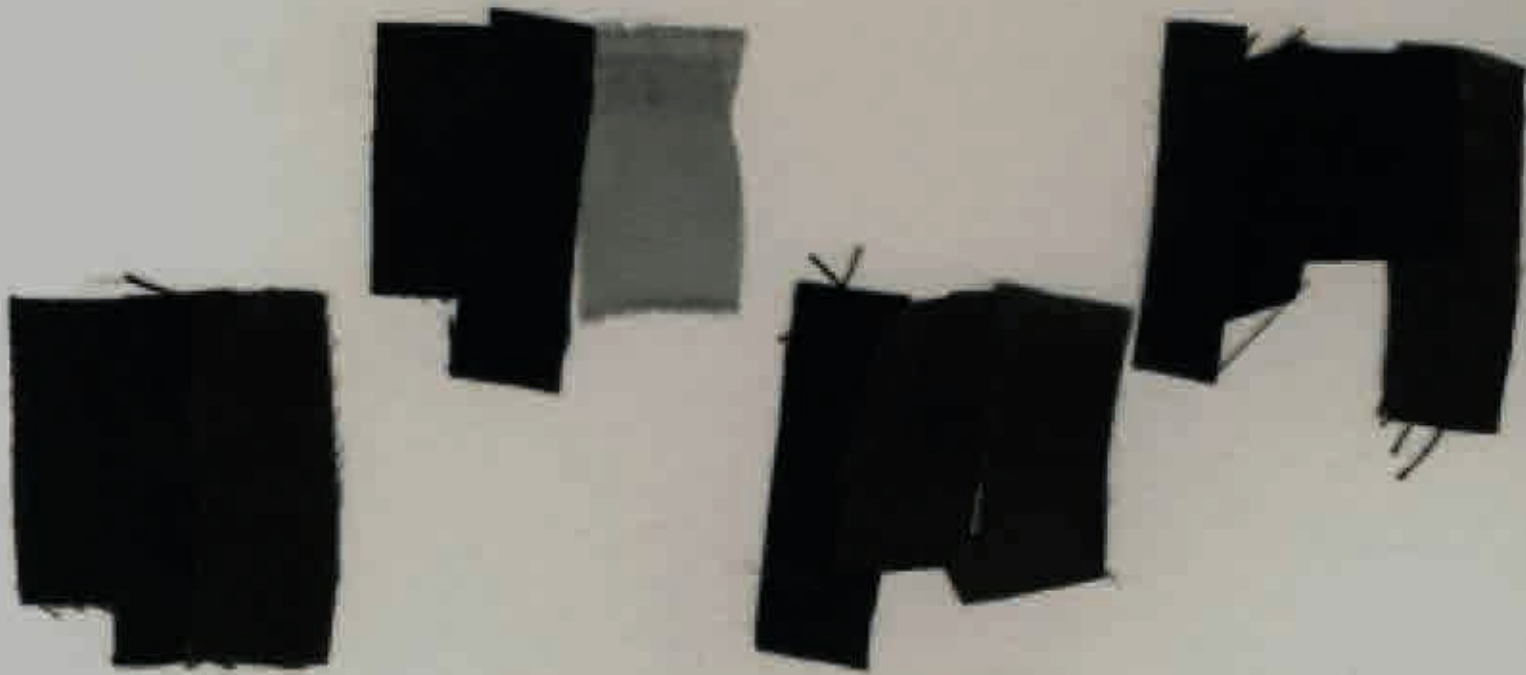










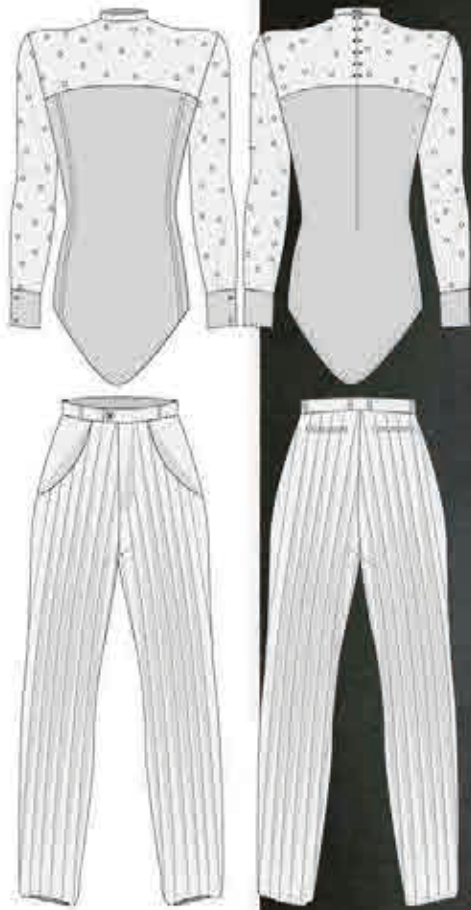




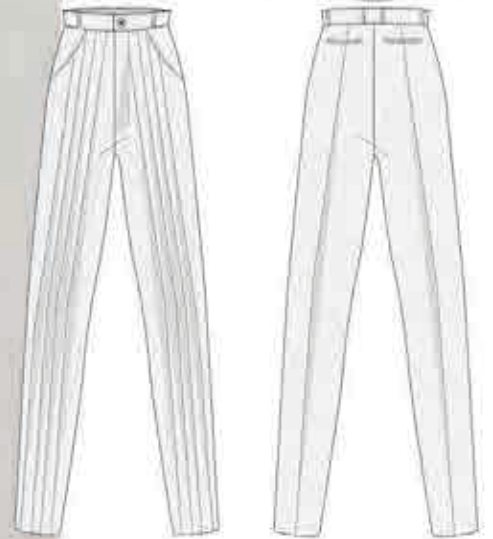




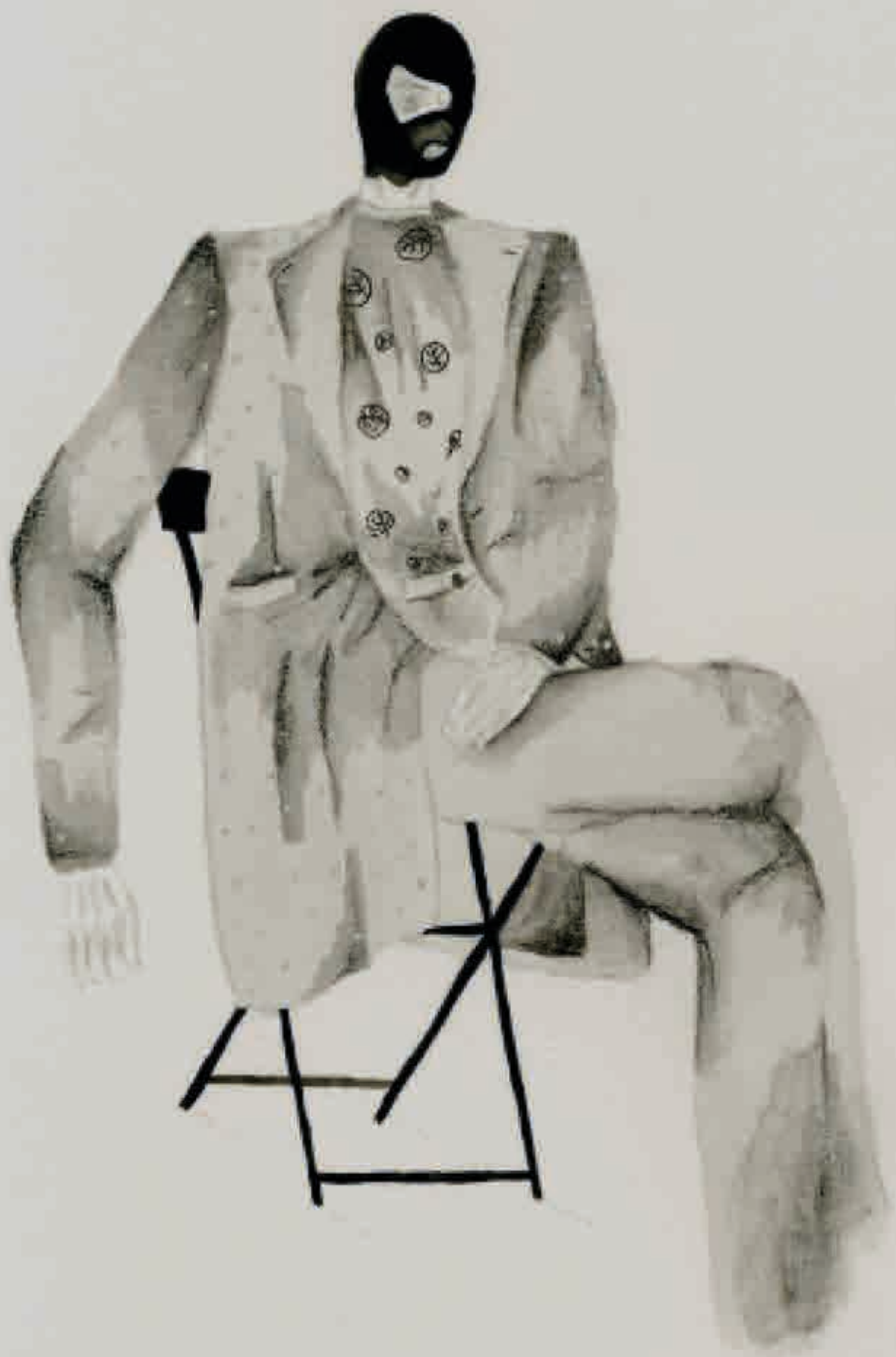




Klimbun







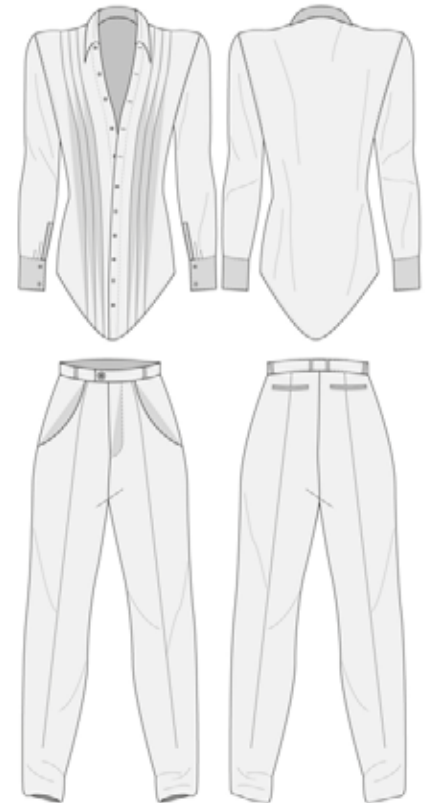
OUTFIT 1



OUTFIT 2



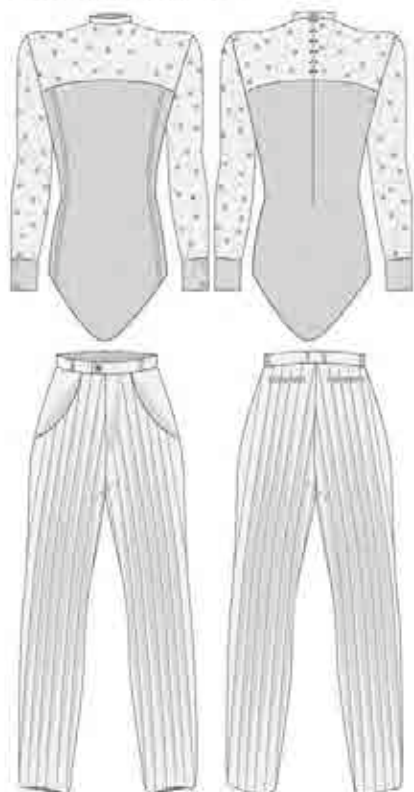
OUTFIT 3



OUTFIT 4



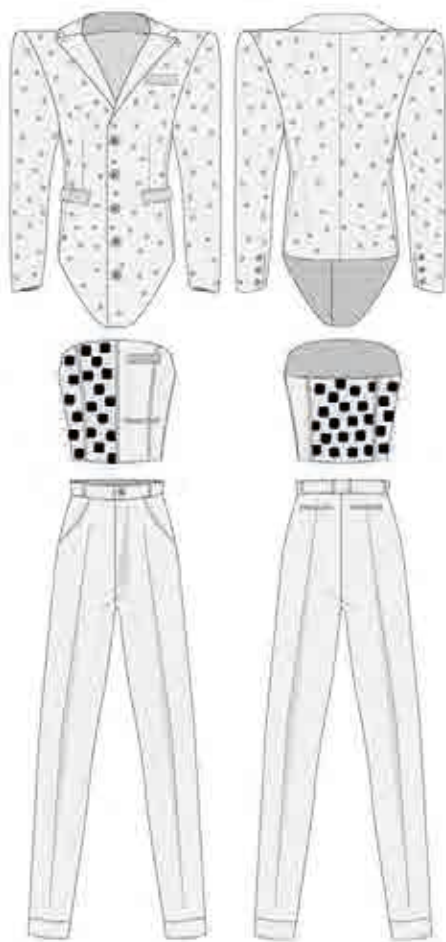
OUTFIT 6



OUTFIT 8



OUTFIT 5



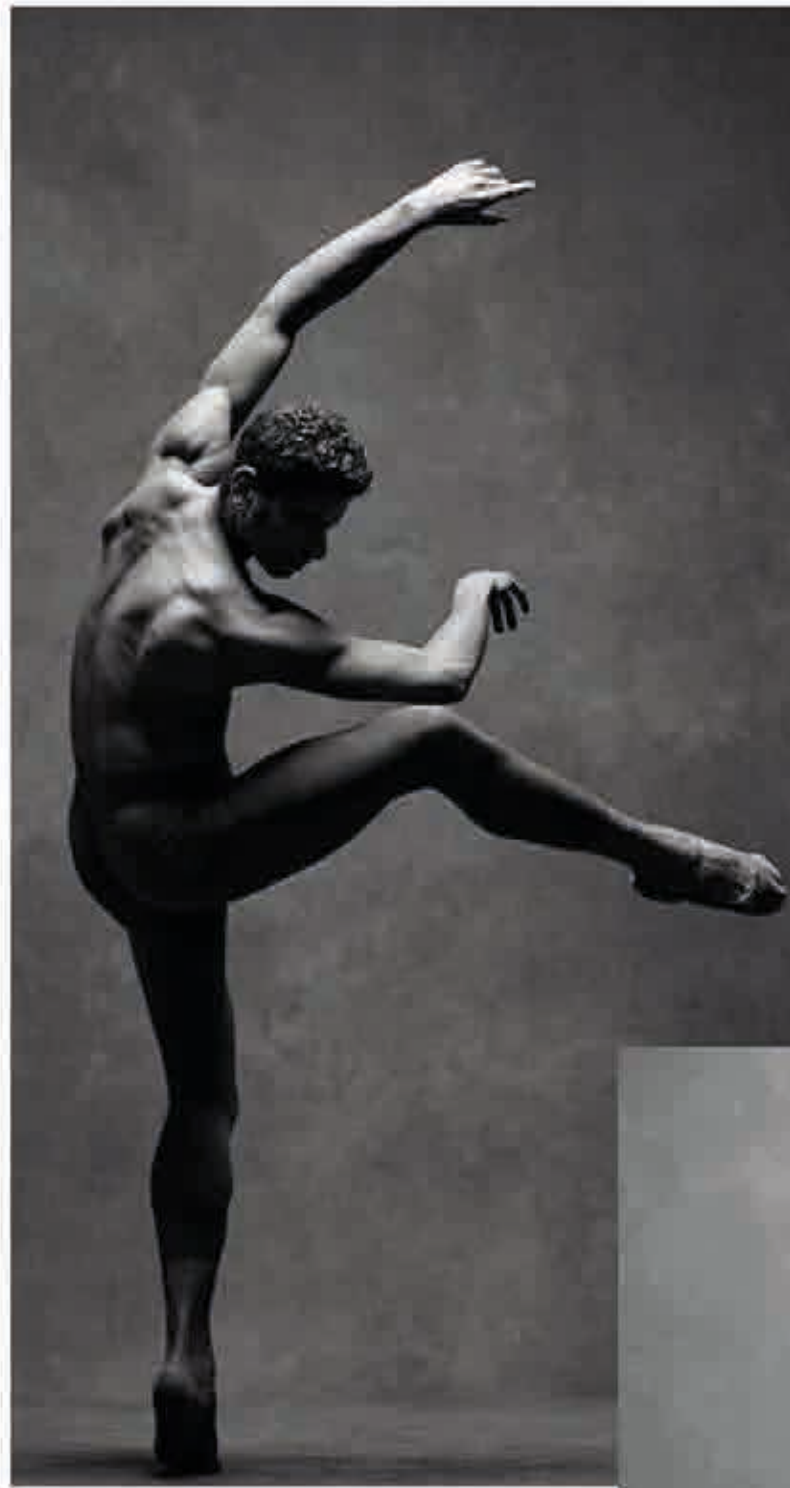
OUTFIT 7



DRAPE PROJECT

SYLPHIDE

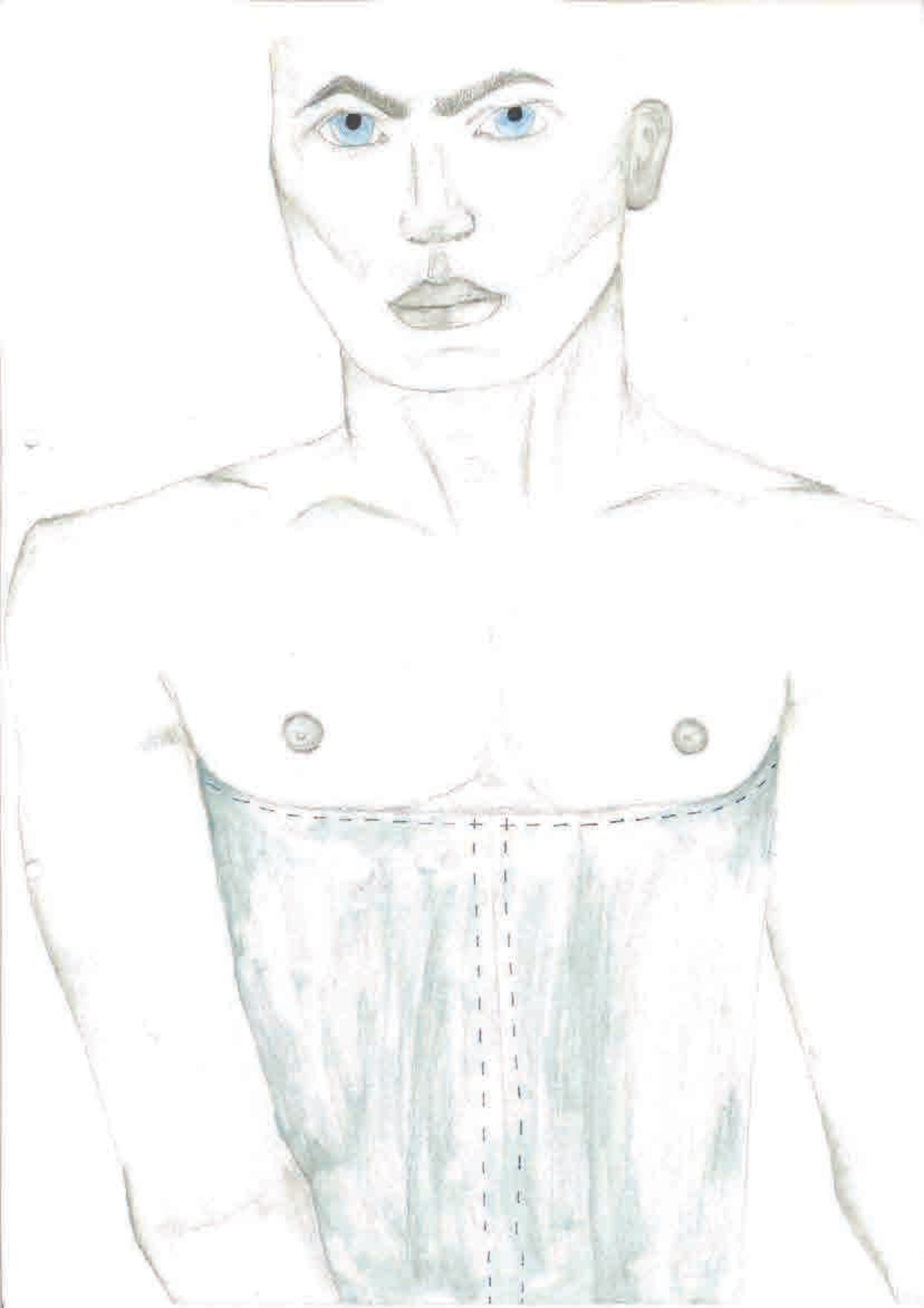


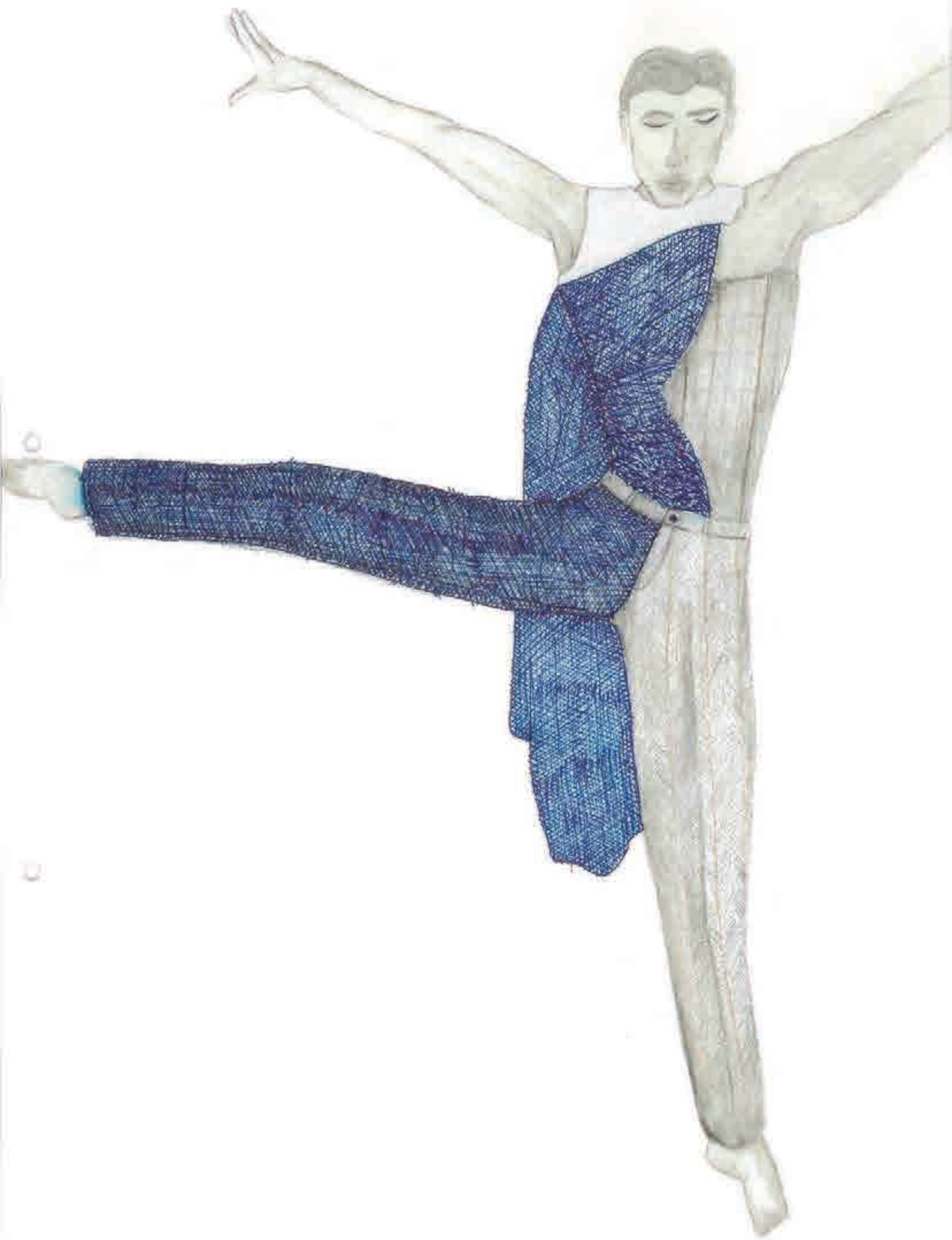








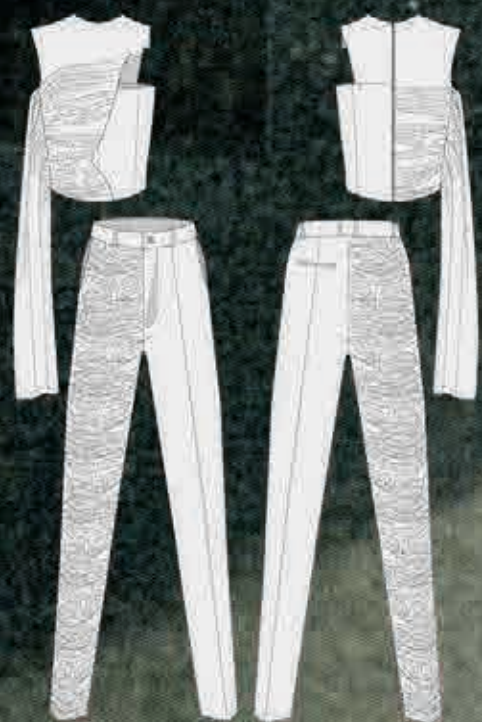






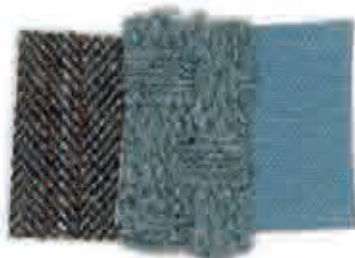
- REDUCE WAIST BY 2 INCHES
- TAKE IN CORSET TO FIT TOP





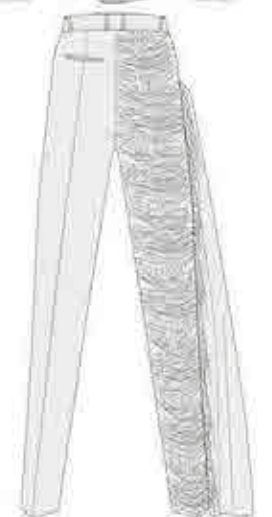
CHET
FRAN





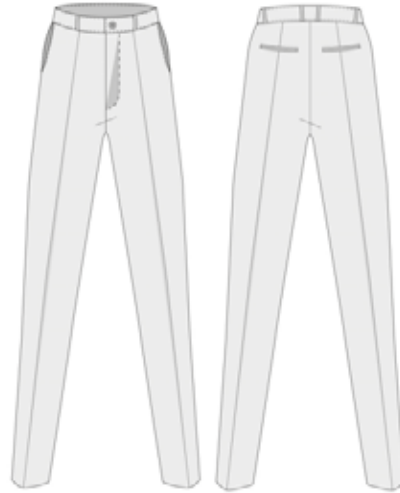
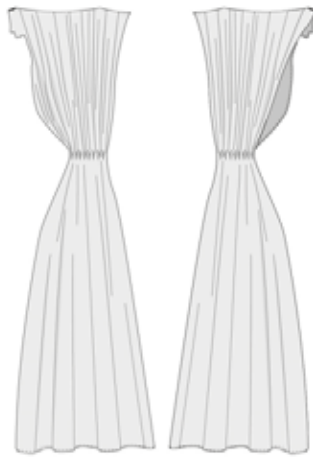


10/17

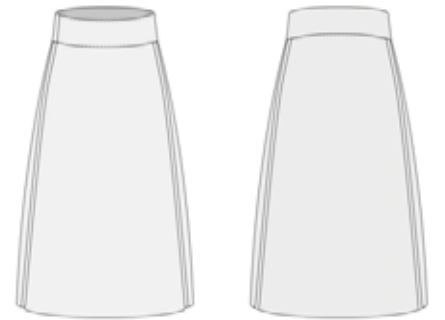




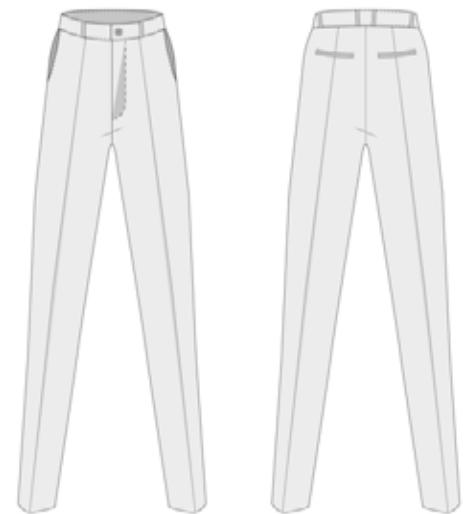
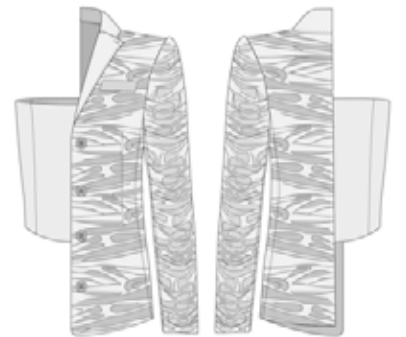
OUTFIT 2



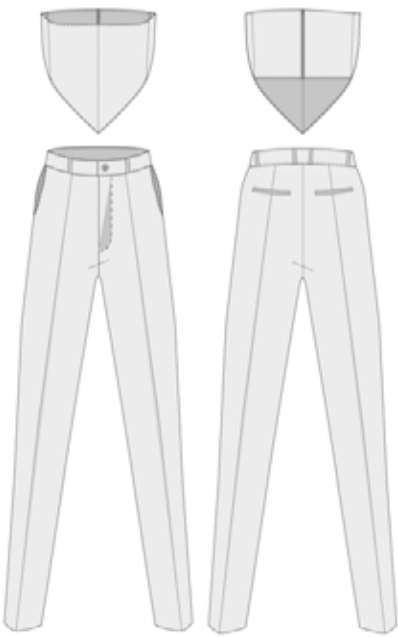
OUTFIT 4



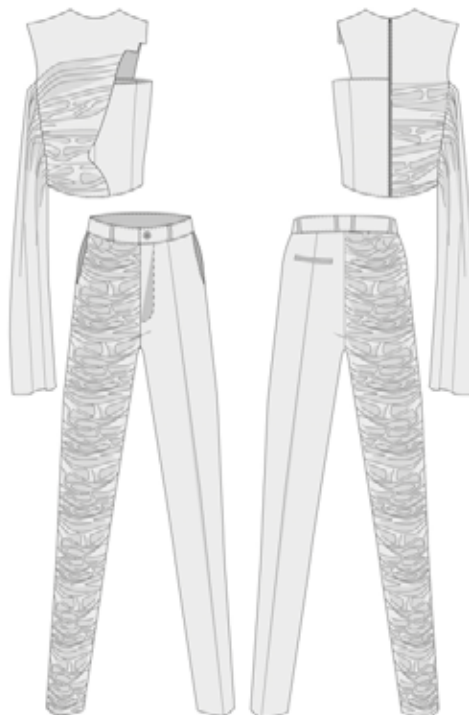
OUTFIT 5



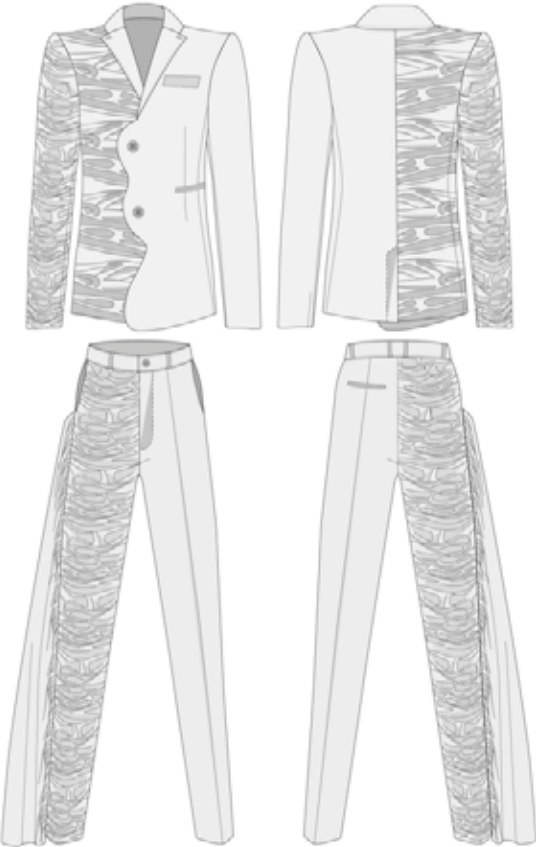
OUTFIT 1



OUTFIT 3



OUTFIT 6



OUTFIT 8



OUTFIT 7

