

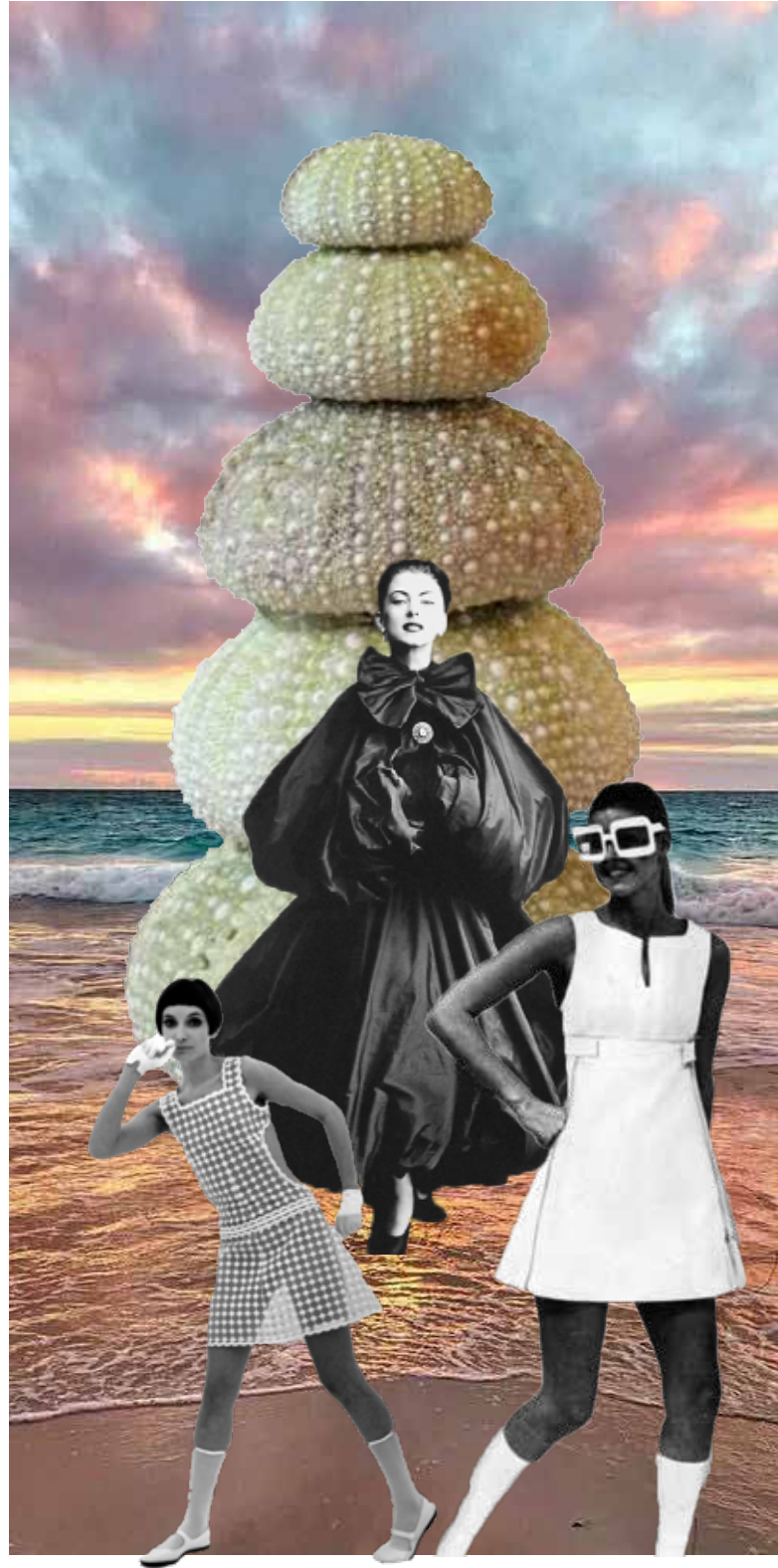
GRADUATE COLLECTION

OCEAN TREASURES

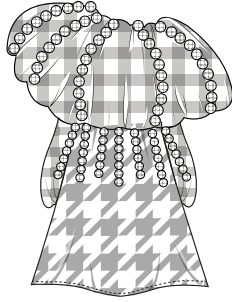
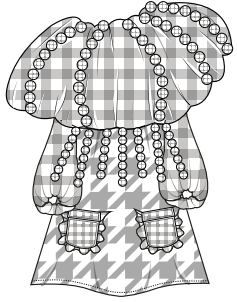
OCEAN TREASURES IS A COLLECTION INSPIRED BY THE PHRASE 'THE WORLD IS YOUR OYSTER' AND IS ALL ABOUT DREAMING OF A PARADISE AFTER LOCKDOWN, WHICH FOR ME IS A PINK SAND BEACH. DRAWING SILHOUETTE INSPIRATION FROM PEARLS, CONCH SHELLS AND SEA URCHINS AND COMBINING THAT WITH SIXTIES BEACHWEAR, CLASSIC BALENCIAGA COUTURE AND EXPLORING DETAILS FROM PLAYFUL NINETIES CHANEL LOOKS THIS COLLECTION IS ALL ABOUT HAVING A CARE FREE SUMMER IN UTOPIA.



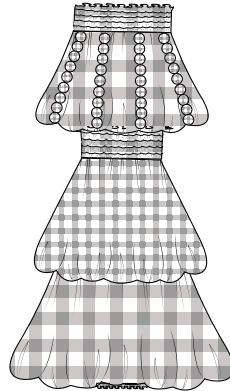
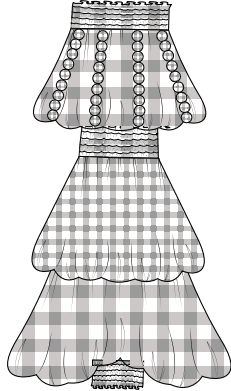




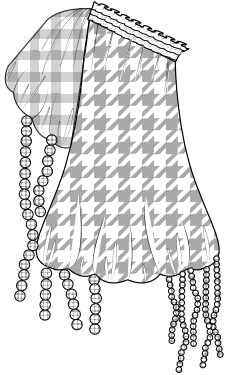
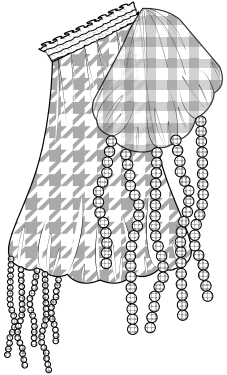




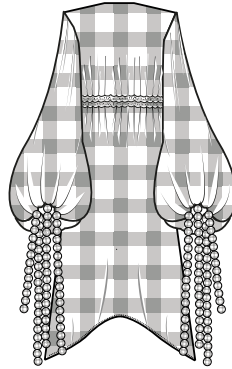
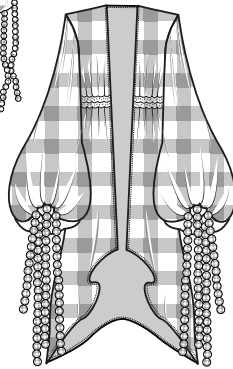
A-LINE DRESS WITH PUFFED NECKLINE:
 •PUFFBALL STYLE NECKLINE VOLUME
 •LARGE GINGHAM BEADS DRAPED OVER THE VOLUME
 •TWO PATCH POCKETS WITH FLAPS



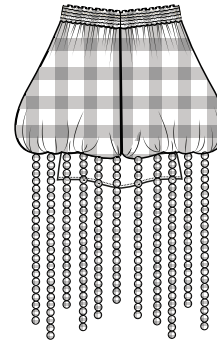
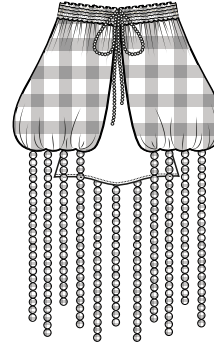
THREE TIER PUFFBALL MAXI DRESS:
 •SHIRRED BANDEAU TOP
 •SHIRRED WAIST AND ANKLE DETAIL
 •LARGE GINGHAM BEAD DETAIL ON THE TOP TIER



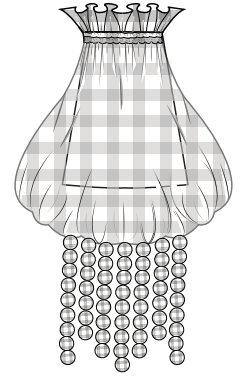
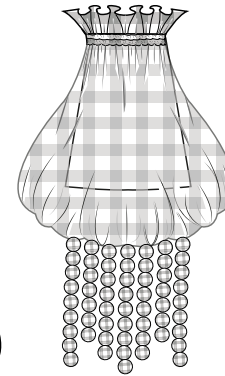
ONE SHOULDER PUFFBALL DRESS:
 •SHIRRED NECKLINE
 •PUFFBALL SLEEVE WITH GINGHAM BEADS
 •PUFFBALL MINI DRESS



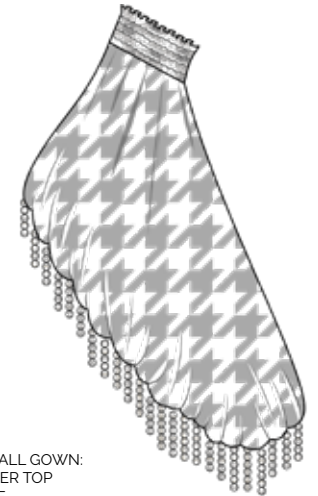
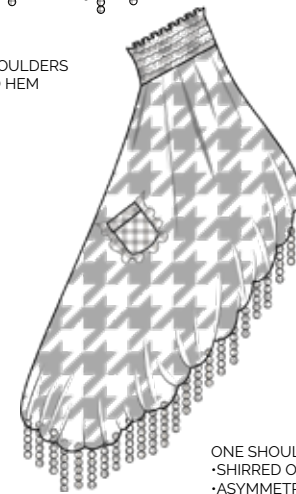
LONG BEACH COVER UP:
 •BISHOP SLEEVES WITH GINGHAM BEADING
 •SHIRRING AROUND THE WAIST
 •SHORTER HEM IN THE FRONT WHICH GROWS LONGER TOWARDS THE BACK



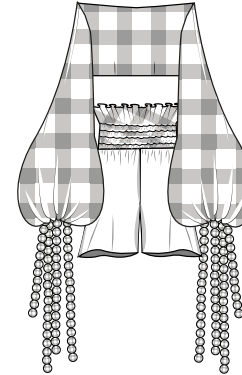
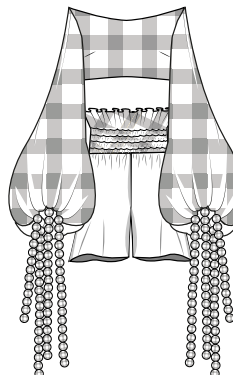
STRAPLESS CAPE WITH SLIP DRESS:
 •SHIRRED PUFFBALL CAPE SITS BELOW SHOULDERS
 •LARGE GINGHAM BEADING ATTACHED TO HEM
 •A-LINE SLIP DRESS UNDERNEATH



STRAPLESS PUFFBALL DRESS:
 •SHIRRED BUST WITH LARGE EXCESS TO THE TOP HEM
 •LARGE GINGHAM BEADING ON THE HEM



ONE SHOULDER PUFFBALL GOWN:
 •SHIRRED ONE SHOULDER TOP
 •ASYMMETRIC HEM LINE
 •LARGE GINGHAM BEADING ALONG HEM LINE
 •ONE PATCH POCKET WITH FLAP PLACED AT AN ANGLE



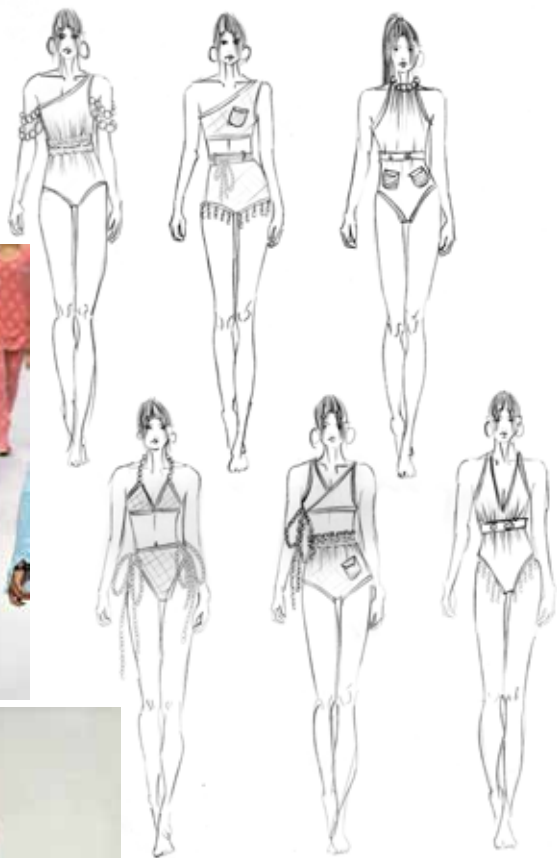
LONGSLEEVE CROP TOP & SHORTS:
 •SHIRRED WAISTED SHORTS
 •FITTED BODICE
 •BISHOP SLEEVES







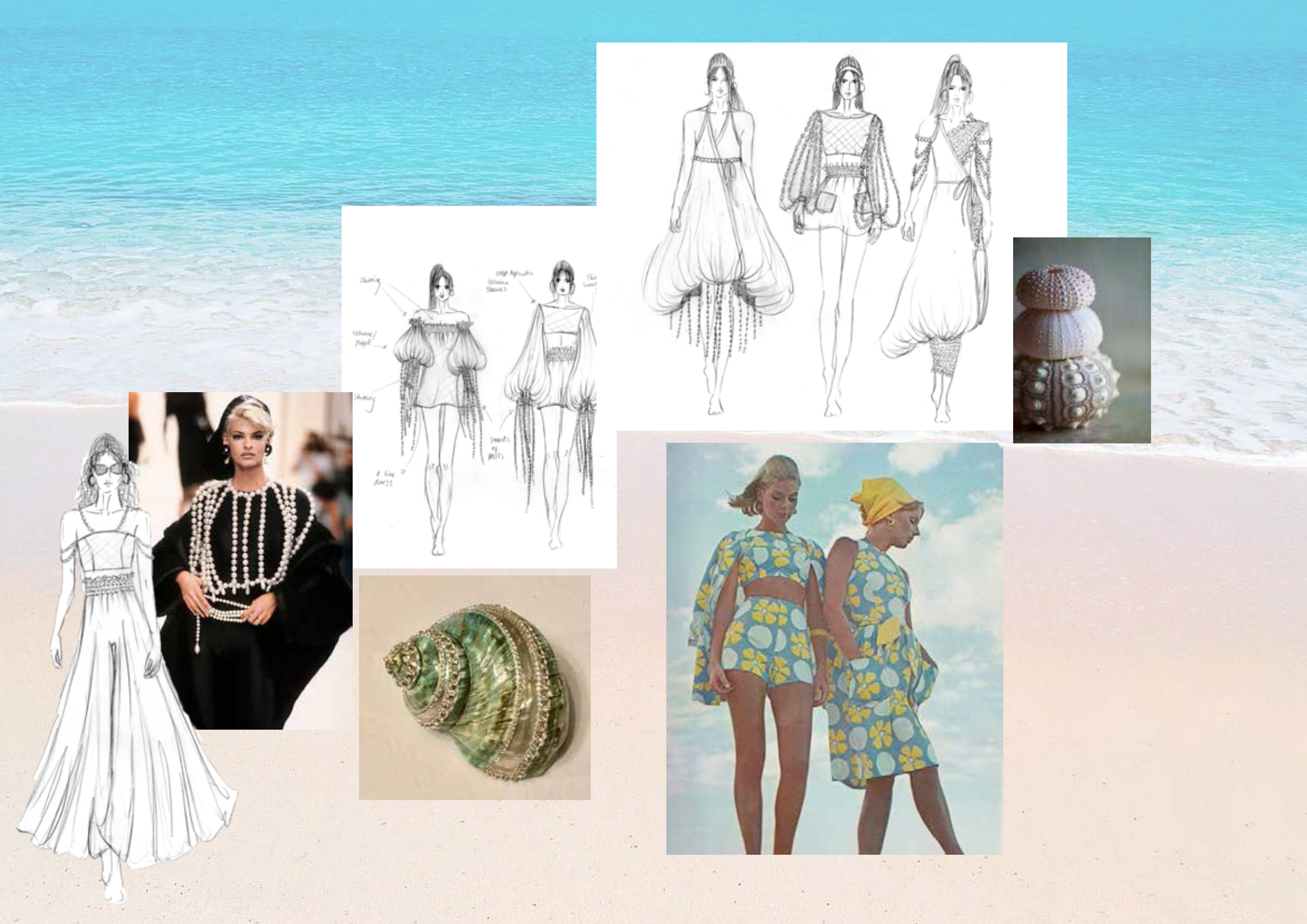




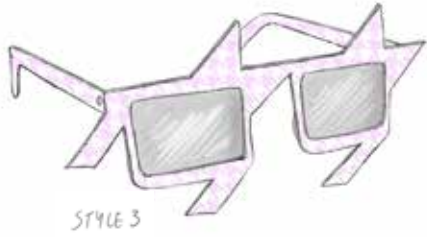




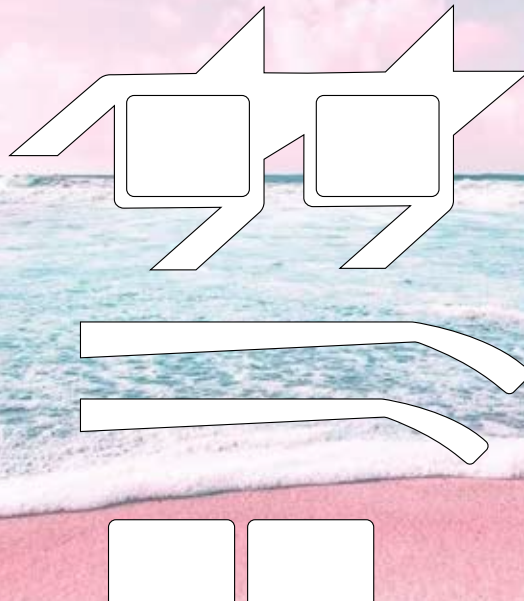
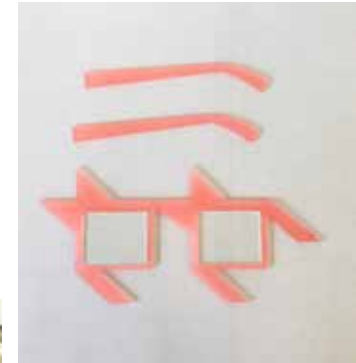




HOUNDSTOOTH SUNGLASSES:



STYLE 3 PROTOTYPE



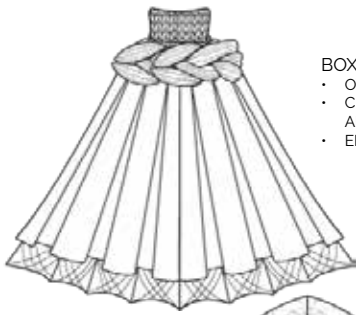
PRE-COLLECTION

NINJA APRES SKI

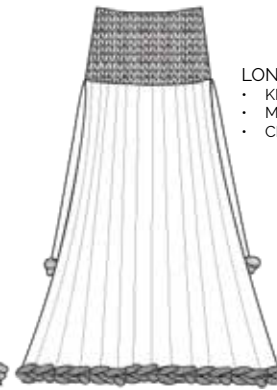
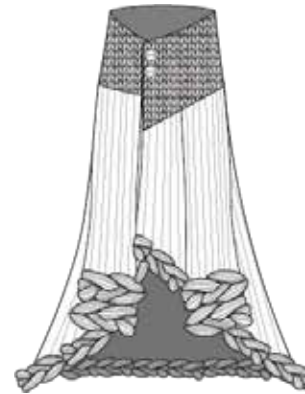


Ninja Apres Ski is a collection inspired by the 70's Japanese film Lady Snowblood. A story about a strikingly beautiful young woman who is raised from birth to be a deadly instrument of revenge against the crooks who destroyed her family. I use this dark heroine to inspire the collection to be for a female warrior to wear on a ski holiday when having a break from revenge murder. Inspirations are also drawn from vintage ski wear looking at the luxury style from the 60's and 70's involving big furs, big knits and big silhouettes. The chunky knit accessories are a symbol of comfort and protection as their attributes engulf the wearer to form a safe feeling, seeing as an assassin always has to keep one eye open.



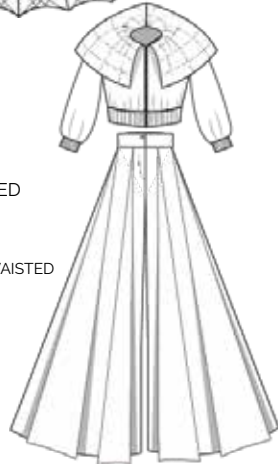


- BOX PLEATED CAPE:**
- OVERSIZED KNITTED POLO NECK
 - CHUNKY MERINO WOOL KNITTED DETAIL AROUND SHOULDERS
 - EMBROIDED DETAIL ALONG THE HEM

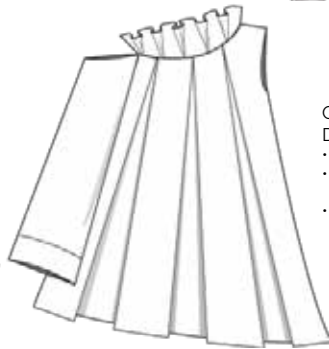
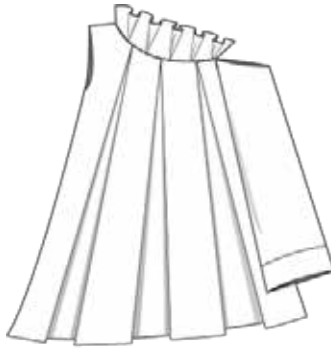
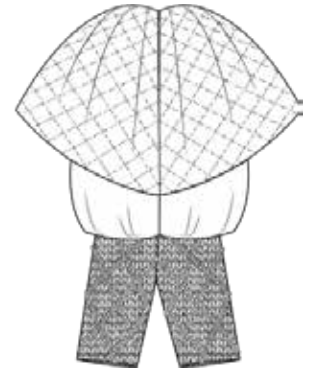
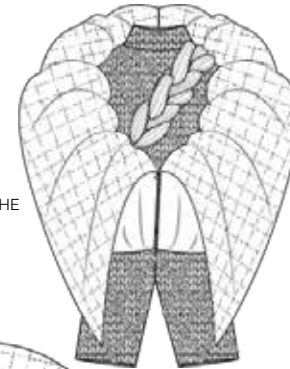


- LONGLINE COAT THAT WRAPS AROUND THE SHOULDERS:**
- KNITTED TOP HALF FASTENED WITH TWO LARGE BUTTONS
 - MAIN BODY IS PLEATED
 - CHUNKY MERINO WOOL KNITTED CUFF AND HEM DETAIL

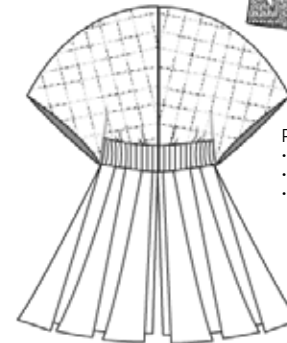
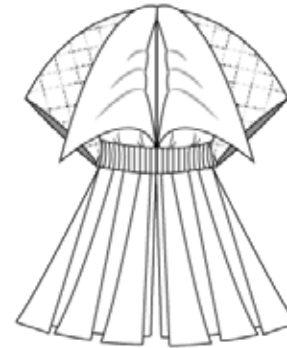
- BOMBER STYLE JACKET AND BOX PLEATED TROUSER:**
- OVERSIZED COLLAR THAT BELLOWS OVER
 - RIBBED WAIST AND CUFFS
 - TROUSERS ARE FLOOR LENGTH AND HIGHWAISTED
 - COLLAR IS QUILTED



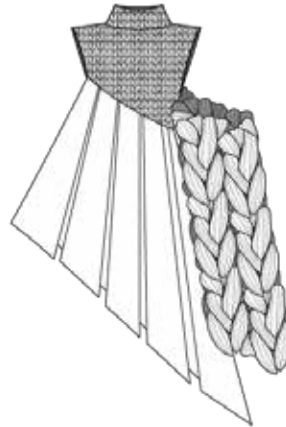
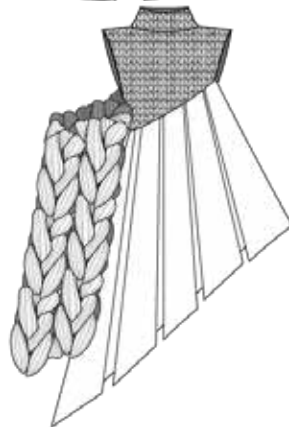
- OVERSIZED PUFFER COAT WITH KNITTED ONE-PIECE :**
- VERY OVERSIZED COLLAR
 - KNITTED BODYSUIT STOPPING AT THE KNEES AND SLEEVELESS
 - CHUNKY MERINO WOOL KNITTED DETAIL ACROSS THE BODYSUIT CHEST
 - FASTENED WITH ZIP



- ONE SHOULDER BOX PLEATED DRESS:**
- KIMONO STYLE SLEEVE
 - PLEATS POSITIONED VERTICALLY BUT FOLLOW THE NECKLINE CURVE
 - FRILL POSITIONED UPWARDS



- PLAYSUIT WITH BOX PLEAT SHORTS:**
- QUILTED TOP WITH OVERSIZED COLLAR
 - RIBBED WAIST
 - LARGE ARM HOLES

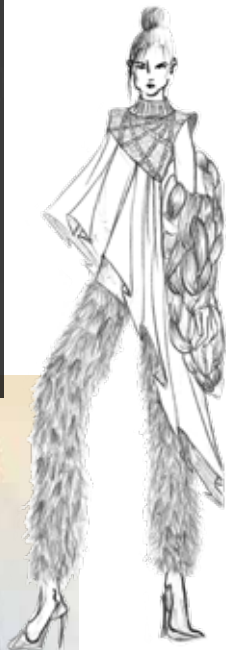










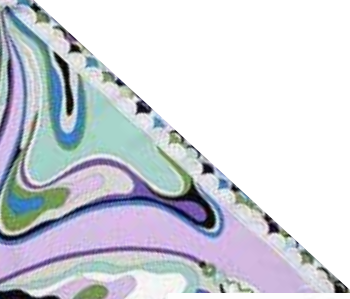


Mimes ripped open
Shoulder seam



Diana's headband
inspires the ultra chunky
knit





Box pleats start from the neckline, one shoulder dress



Darkly knit piece passes low the pleats



the frill added to the neckline incorporates the lightness of the knit





Ski style suit
with box pleat
trousers



long coat and
dress versions of the
Ski suit





OUTFIT 1 TOILE



OUTFIT 2 TOILE





Chunky knit shawl
will be an accessory
so it is removable





parasol stitching
used as a pattern
for knitwear





Quarry knit trousers
mimicking the shape
of Salopettes



Potential knitwear
based line up



full body
quilted knitwear

