

*they will carry us to  
worlds that never were*

# WORLDS THAT never were

never were

never were

PANTONE 601 C

PANTONE 172 C

PANTONE 212 C

DAISUJE YOKOTA

LALIQUE . 1900

@ARCHILLECT

AUS . 1940





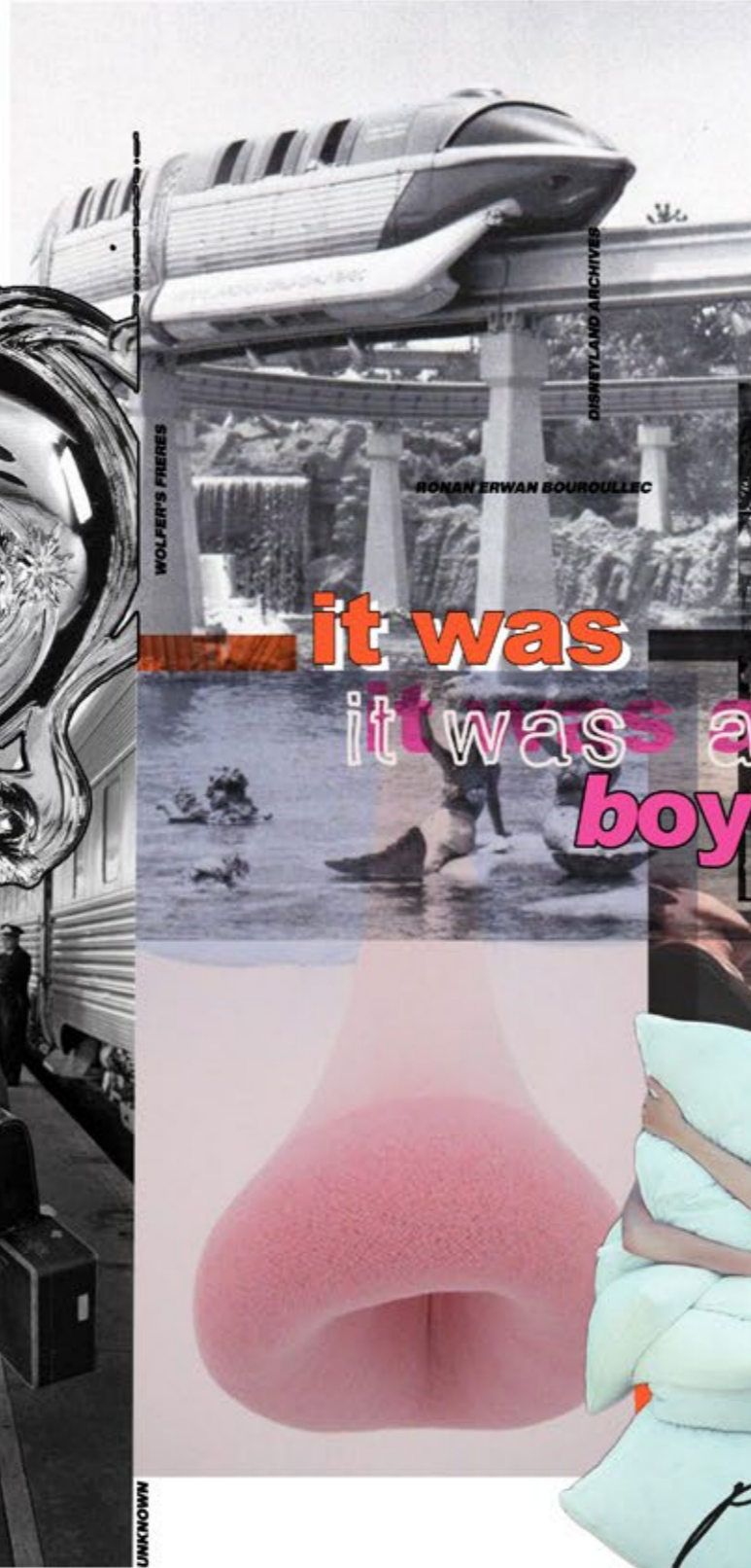
# MAINLINE

SPRING/SUMMER 22



ESTER-ONZULE

SPRING SUMMER  
2022



it was  
it was a  
boy's dream  
dream  
dream  
dream

all just



MARK BORTHWICH

*let us run away to  
places they can not see*



**WORLDS  
THAT NEVER WERE**



DAISUKE YOKOTA

so, tell me,

**where** is home,  
**where** then?



**we are here**  
**we are here**

KURDISH JEWS

**but we are not**  
**but we are not**  
**but we are not**



PANTONE 232 C

PANTONE 172 C



PANTONE 601 C





# MAINLINE

SPRING/SUMMER 22

BEN MAXFIELD

*We both drowned under the  
waves of the words  
we weren't  
saying.*



UNKNOWN

JEWISH CHILDREN



@SSENSE

**Drowning  
Drowning  
Drowning  
Drowning  
Drowning**

*Souls*

DAVIDO MORIYAMA





# WORLDS THAT NEVER WERE





# MAINLINE

SPRING/SUMER 22

ESTERE ONZULE

SPRING SUMMER  
2022



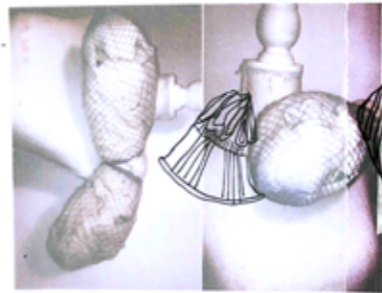
RIBBED TURTLENECK  
2 ASYMMETRICAL  
2 SLEEVES, OFFSET,  
DRAPPED CUFFS  
TOP



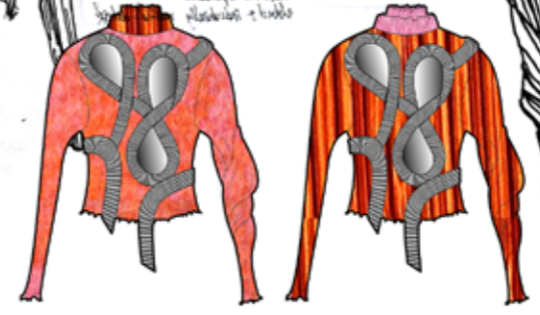
MULTI LAYERED KNIT? PLEATED COLLAR  
ASYMMETRICAL SLEEVES & RIBBED  
DETAILED TIES/HANDS & HOLES AROUND  
THE OVERLAP TOP



PLEATED  
TOP WITH RIB SLEEVES  
& HOLE DETAIL ON FRONT



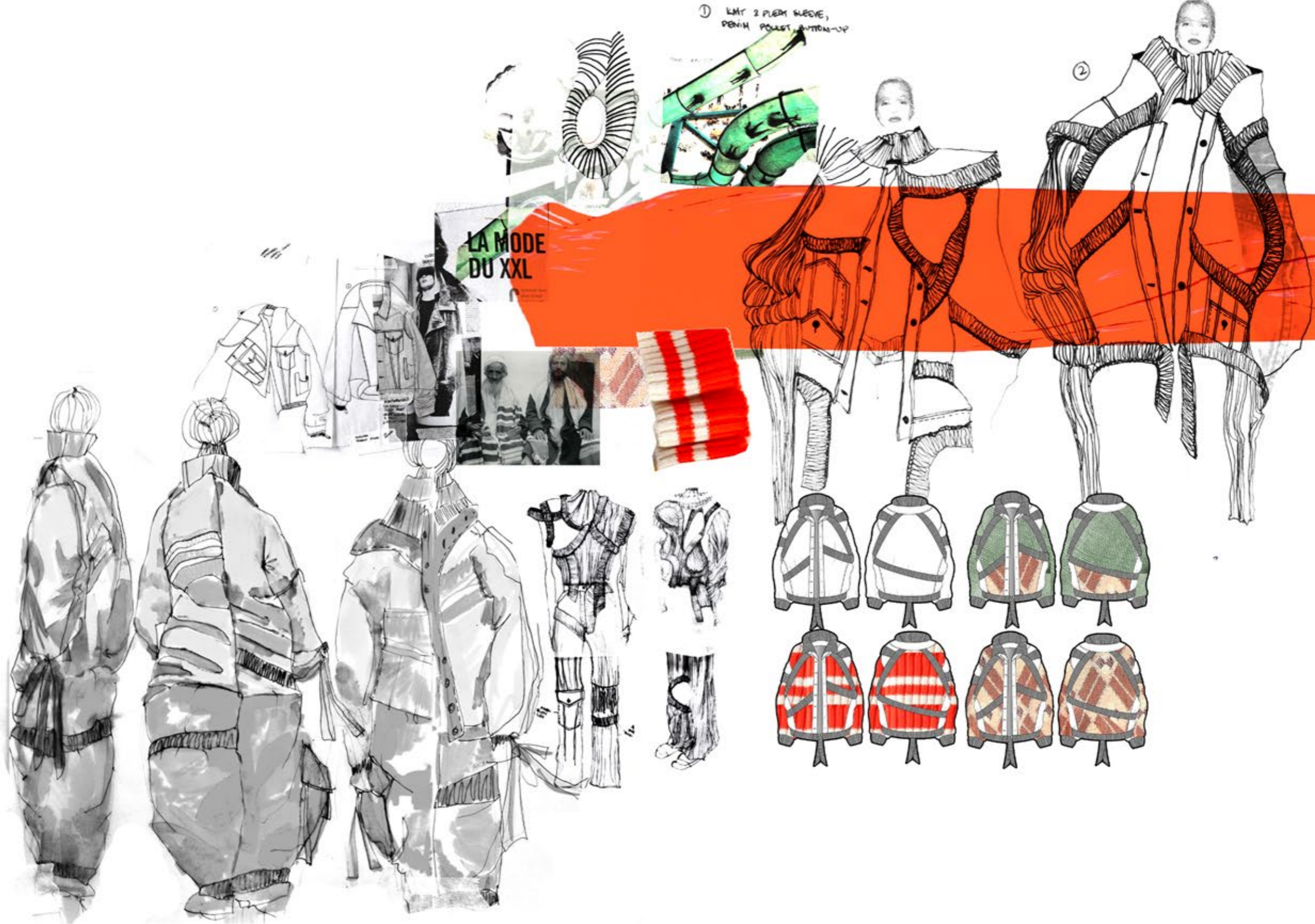
ASYMMETRICAL  
PLEATED & HOLES



MULTI LAYERED KNIT  
SWEATER / TOP  
WITH COLORED RIB  
TIE HOLES DETAIL &  
TRIMMED PLEATED COLLAR



# WORLDS THAT NEVER WERE

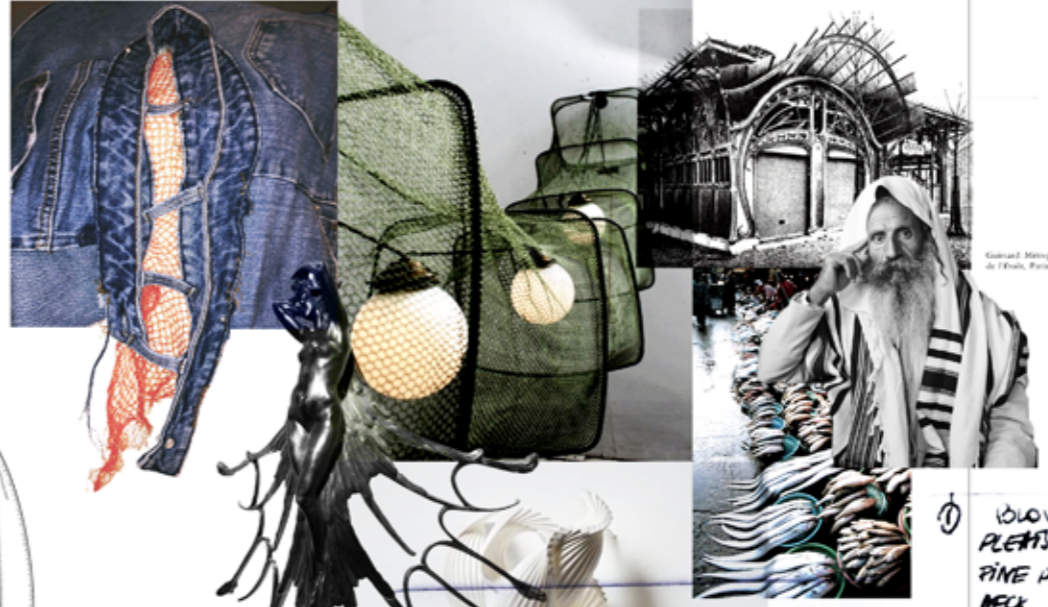




# MAINLINE

SPRING/SUMER 22

ESTERE ONZULE



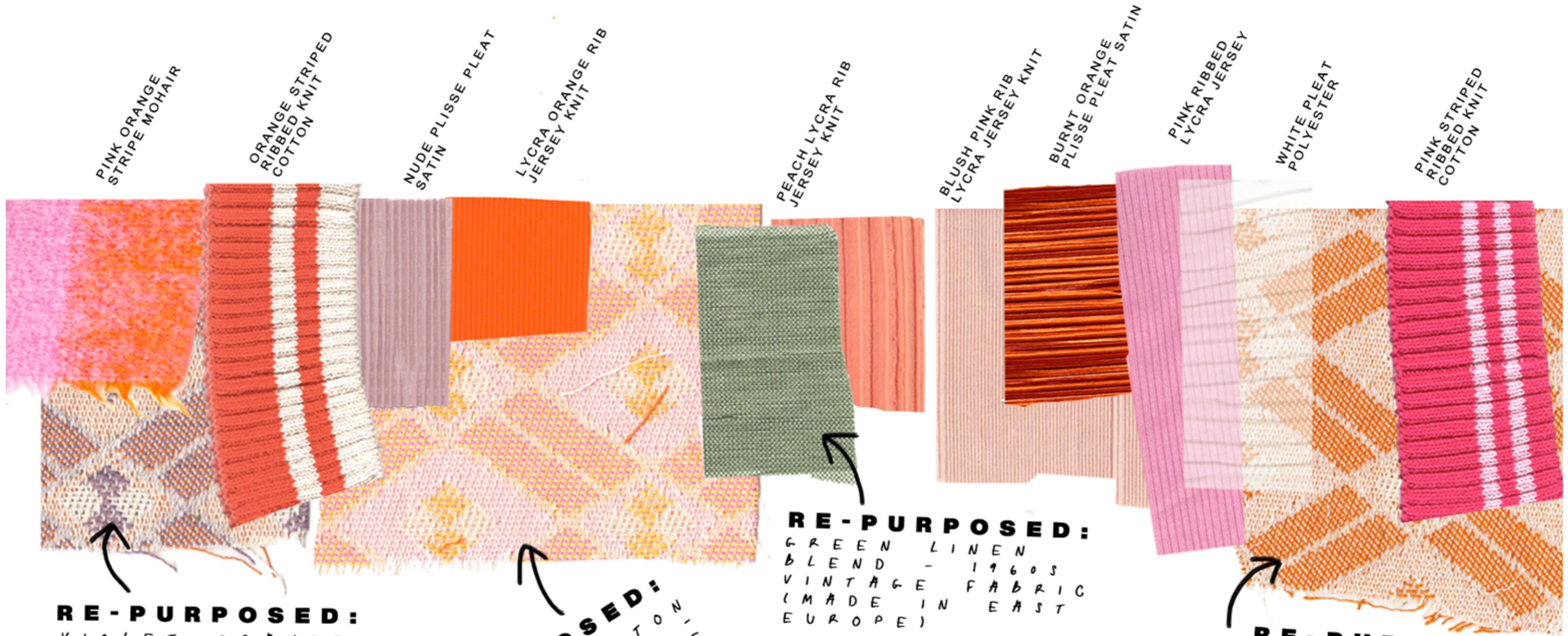
Gabriel, Mariposa, Paris, P. de France, Paris, 1990 (Lacoste)

LOUSE TOP  
PLEATS, KNT, HLK  
FINE PLEAT SLEEVES 2  
NECK, 2 RIBBED TIE  
DETAIL TOP/SWEATER

KNT + PLETTY LININ + RIB TIES







**RE-PURPOSED:**

VIOLET ORANGE  
COTTON RHOMBUS  
PATTERN -  
1960S VINTAGE  
FABRIC (MADE  
IN EAST  
EUROPE)

**RE-PURPOSED:**

PINK YELLOW  
RHOMBUS PATTERN -  
1960S VINTAGE  
FABRIC (MADE IN  
EAST EUROPE)

**RE-PURPOSED:**

GREEN LINEN  
BLEND - 1960S  
VINTAGE FABRIC  
(MADE IN EAST  
EUROPE)

**RE-PURPOSED:**

WHITE ORANGE  
RHOMBUS PATTERN -  
1960S MAKE VINTAGE  
FABRIC (MADE IN  
EAST EUROPE)







# MAINLINE

SPRING/SUMMER 22

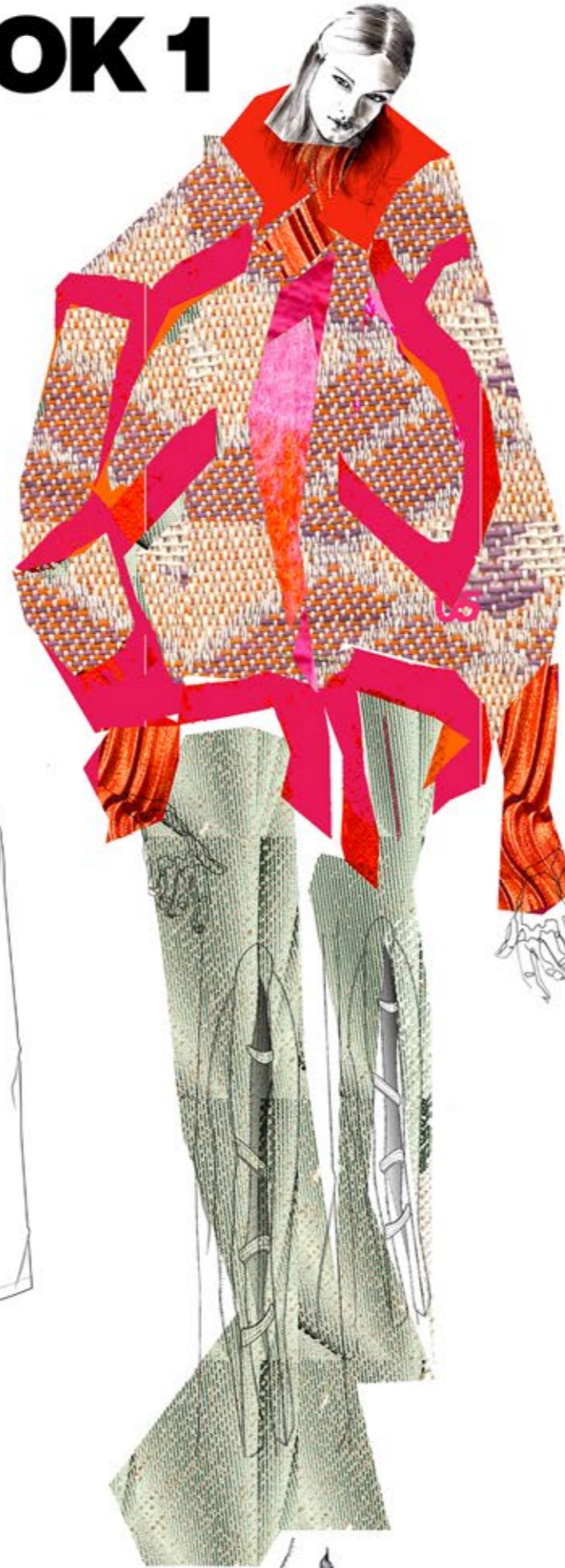
## LOOK 1

1.



3.

2.



### 1. GALLE JACKET

Oversized multi-coloured rhombus pattern cotton jacket with asymmetrical front pockets and contrasting pink stripe rib detail. Featuring golden jean button fastening and orange topstitching and button holes, ribbed collar, cuffs and hem ties.

### 2. LAUTREC TOP

Orange plisse pleat satin top with orange - pink mohair top layer and striped pink ribbing around edges crossing over the left shoulder. Body fitted cut, invisible back zip, lockstitched knits and babylocked hems and collar of base layer.

### 3. MUCHA TROUSER

Green linen high waisted trouser with cut-out detail on front legs, Denim style waistband and pockets, golden metal zip and jean button fastener, front and back pockets with matching metal rivets on edges.



# LOOK 2



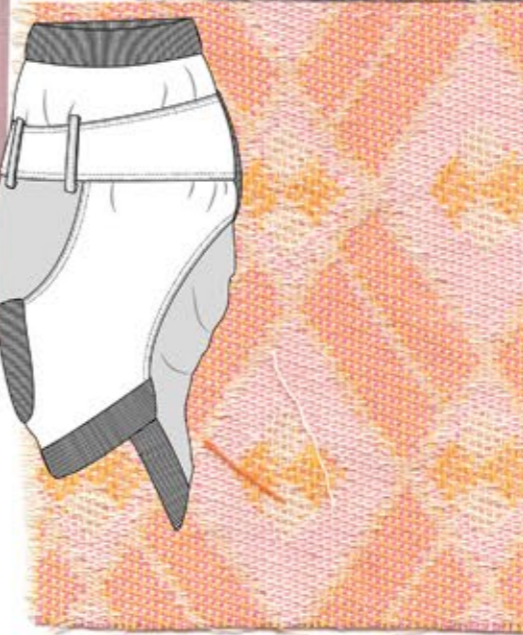
**1.**



## **1. KLIMT TOP**

*Pink & yellow rhombus pattern cotton bodice and sleeve ties with contrasting nude plisse pleat satin jersey collar and sleeves. Crossed waistband on back and wrapping around the sleeves. Cream center back invisible zip and contrasting orange thread topstitch.*

**2.**



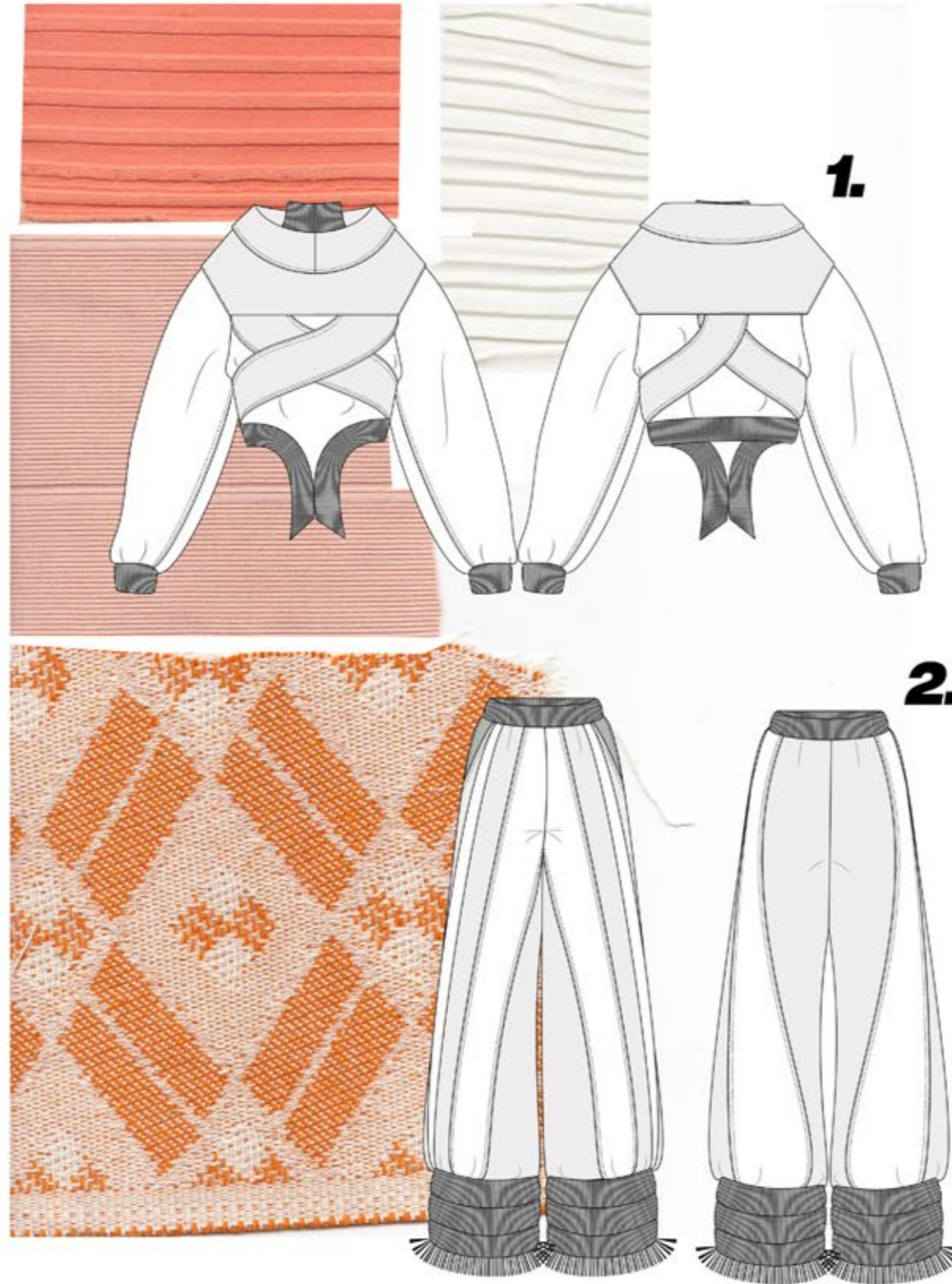
## **2. BEARDSLEY SKIRT**

*Nude plisse pleat satin and violet orange rhombus pattern cotton skirt featuring a dark online green rib trim fishtail hem and ribbing around cut-outs. Paneled skirt with band detail and beltloops around hip, a ribbed stretch waistband.*



# MAINLINE

SPRING/SUMMER 22



## LOOK 3



### 1. MACHINTOSH TOP

Oversized cross tie sweatshirt in orange - cream rhombus pattern cotton and sheer pleats. Dark olive green ribbed collar, cuffs and fishtail hem. Double layer collar, a center front golden metal zip fastener. Topstitched tie wrapping around front, waist and back.

### 2. LAUTREC TROUSER

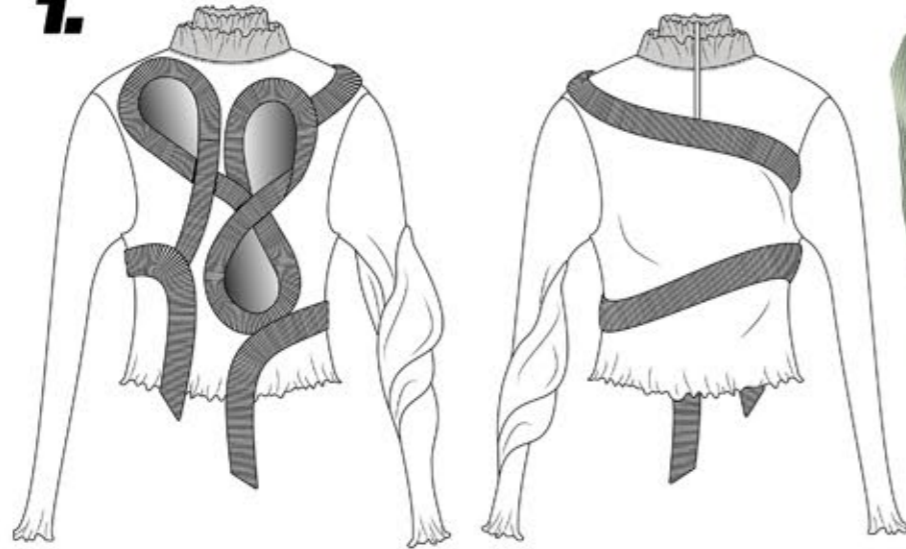
Wide leg oversized knit trouser in two toned pastels - peach and blush, with a dark olive green ribbed fringe hems. Side pockets and topstitched jersey paneling.



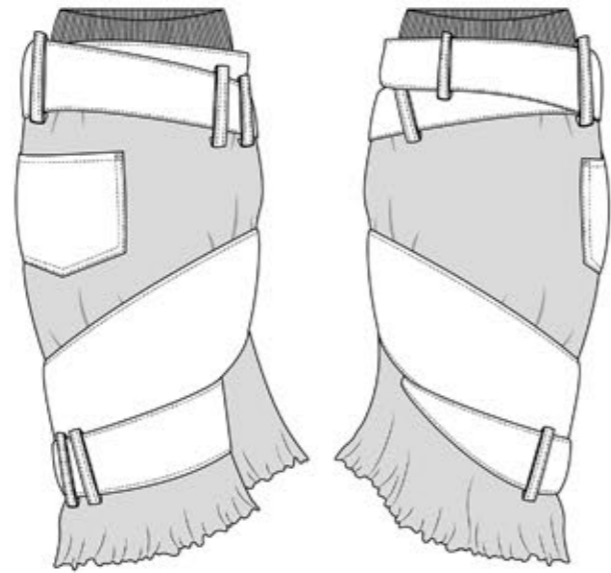
# LOOK 4



**1.**



**2.**



## **1. ZARINS TOP**

Green linen top with asymmetrical twisted left sleeve. A double orange plisse pleat satin collar, front cut-outs framed with orange stripe ribbing. Babylocked double collars with an invisible zip fastener on center back.

## **2. ROZENTAL SKIRT**

Orange plisse pleat satin skirt with yellow - pink rhombus pattern cotton waistband ties. An orange stretch rib waistband and topstitched denim style panels. In asymmetrical cut with a side pocket and large belt loops supporting band detail, babylocked hem.

