



REACTOR

NO. 4

EMILY BAKEWELL

DESCRIPTION OF COMPONENTS

INGREDIENTS:

A INITIAL KEY FOCUS ON THE INFAMOUS CHELSEA BYRLE
DISASTER AMONGST THE SOVIET RUSSIAN PERIOD, AN
NARRATIVE THAT INVOKES EMOTION AND NEW
IMAGERY EXPLORING THE EFFECTS OF THE DISASTER
AND HOW MODES OF PROTECTION HAVE INFLUENCED
THE REACTION TO COVID 19. CAREFULLY CONSIDERING
THEMES OF MUTATION IN COMBINATION WITH THE
EVOLUTION OF TRENDS IN 1980 RUSSIA.

100% ORIGINAL



REN
CRA
DINO
K4





REACTOR NO.4 AW22



REACTOR NO.4 AW22



REACTOR NO. 4 AW22

Nuclear plant accident



Signs indicate partial c



REACTOR NO. 4 AW22

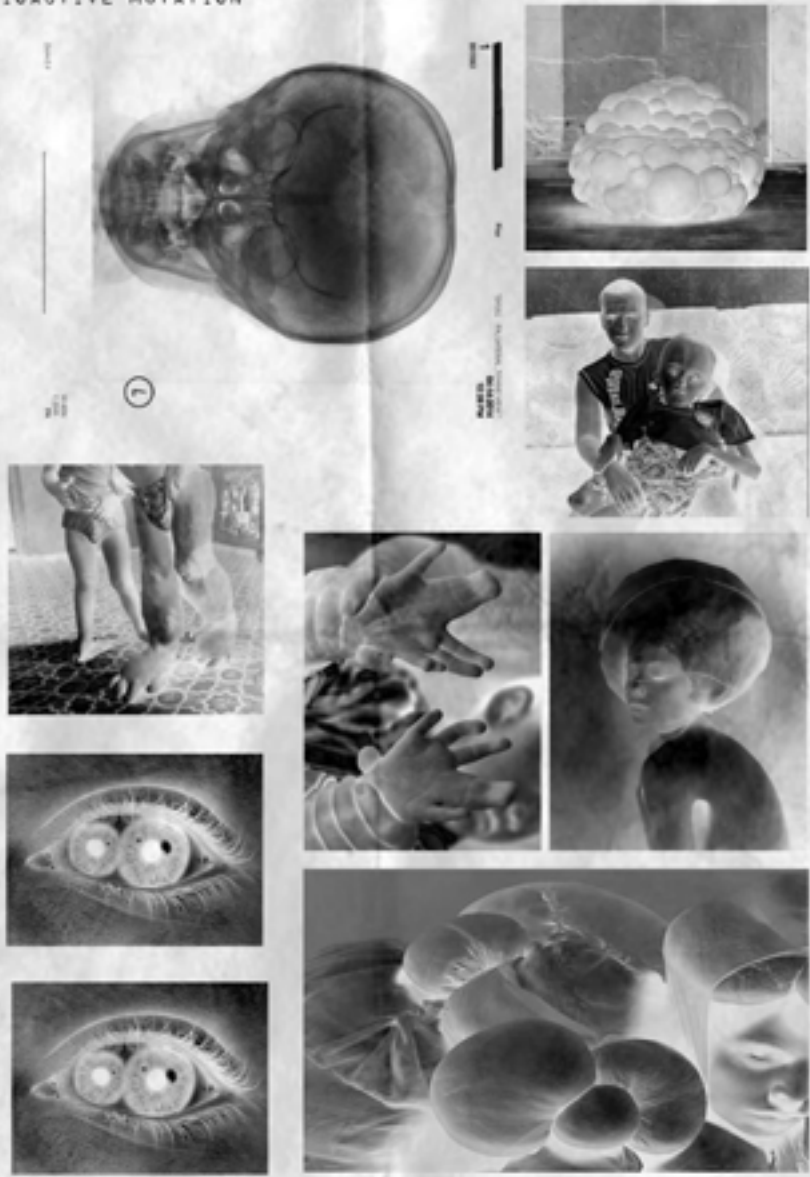






REACTOR NO. 4 AW22

RADIOACTIVE MUTATION



REACTOR NO.4 AM22



REACTOR NO.4 AM22



REACTOR NO. 4 AW22



REACTOR NO. 4 AW22

FLORAL [NOON]
A FABRIC WITH A FLORAL DESIGN.



RANGE PLANS

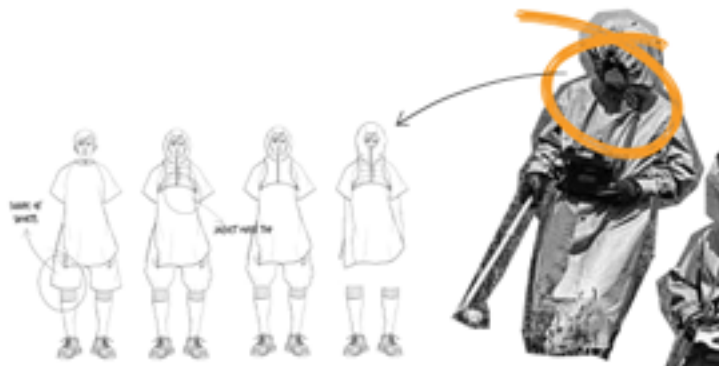


FINAL LOOK

- LOOK 1**
- LOOK 2
- LOOK 3
- LOOK 4
- LOOK 5
- LOOK 6
- LOOK 7
- LOOK 8



FINAL LOOK



- LOOK 1
- LOOK 2
- LOOK 3
- LOOK 4
- LOOK 5
- LOOK 6
- LOOK 7
- LOOK 8



RANGE PLANS

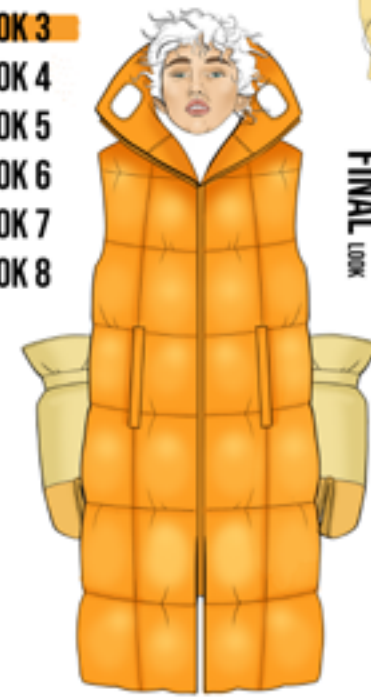
RANGE PLANS



FINAL LOOK

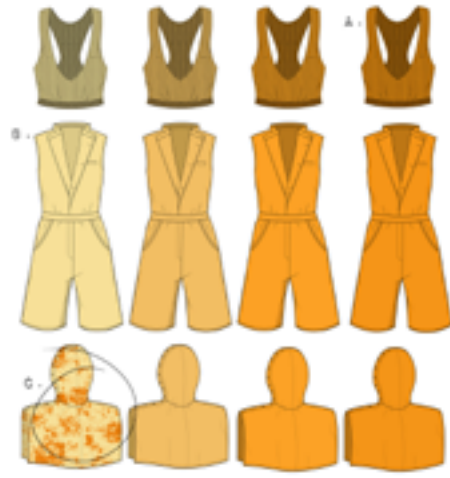


- LOOK 1
- LOOK 2
- LOOK 3
- LOOK 4
- LOOK 5
- LOOK 6
- LOOK 7
- LOOK 8



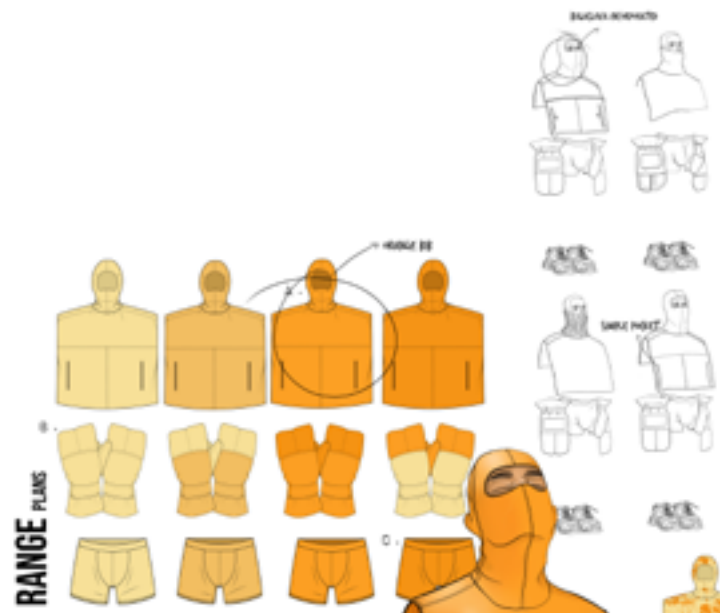
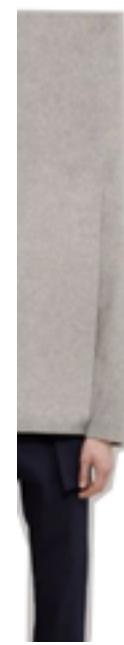


- LOOK 1
- LOOK 2
- LOOK 3
- LOOK 4**
- LOOK 5
- LOOK 6
- LOOK 7
- LOOK 8



RANGE ...

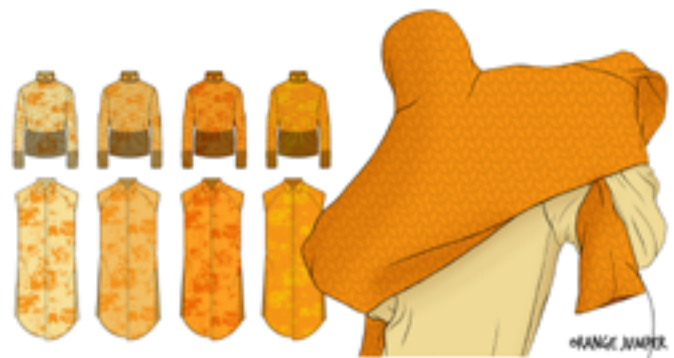
FINAL LOOK



- LOOK 1
- LOOK 2
- LOOK 3
- LOOK 4
- LOOK 5**
- LOOK 6
- LOOK 7
- LOOK 8

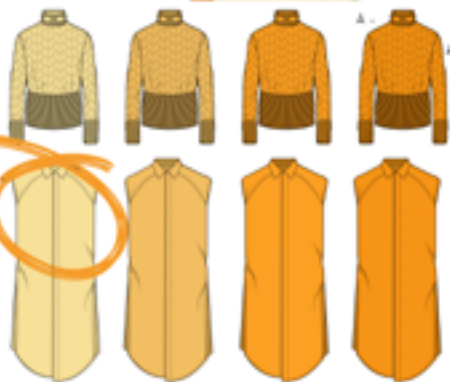
FINAL LOOK



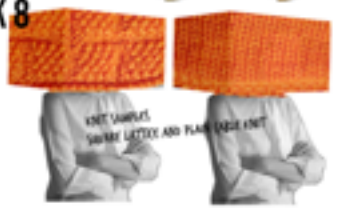


- .00K 1
- .00K 2
- .00K 3
- .00K 4
- .00K 5
- .00K 6**
- .00K 7
- .00K 8

RANGE PLANS



RANGE JUMPER

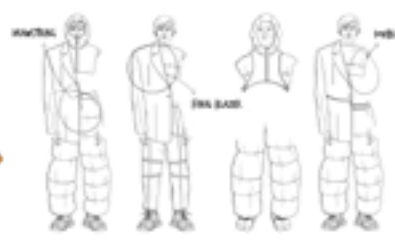


FINAL LOOK



PUFFER PANTS INSPIRATION

FINAL LOOK

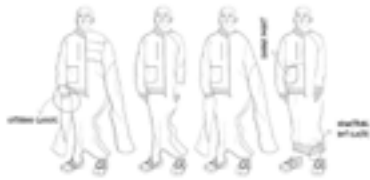


- LOOK 1
- LOOK 2
- LOOK 3
- LOOK 4
- LOOK 5
- LOOK 6
- LOOK 7**
- LOOK 8

RANGE PLANS



.00K 1
 .00K 2
 .00K 3
 .00K 4
 .00K 5
 .00K 6
 .00K 7
 .00K 8



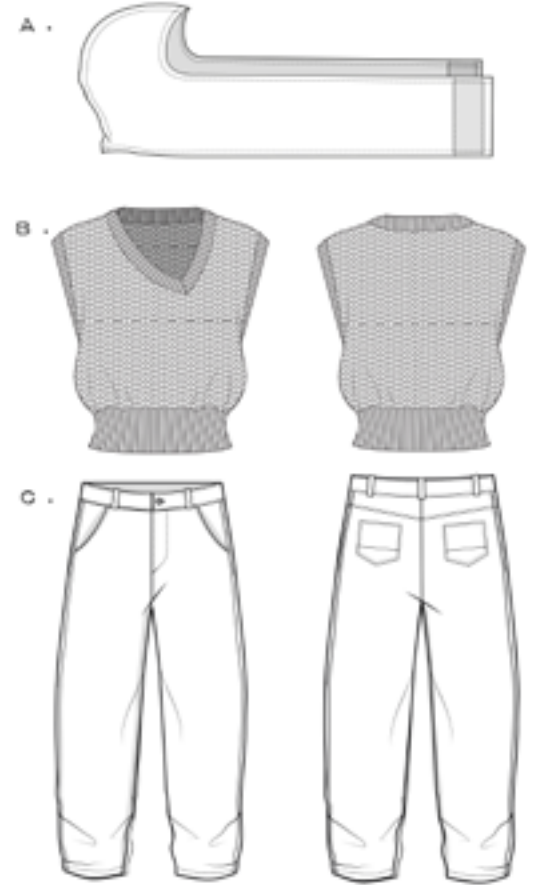
RANGE PLANS



FINAL LOOK



LOOK 1



- A - MANGO SORBET PUFFER SCARF HOOD WITH HELD-TASTENING.
- B - CARROT ORANGE SINGLE KNOT WEAVE OFF CENTRE V NECK JUMPER VEST WITH 2X2 RIB KNOT THICK HEEL.
- C - BUTTER OVERSIZED BALLOON JEANS WITH STANDARD ZIP-FLY FRONT ZIP POCKETS AND BELT LOOP WAISTBAND. CONTRAST HONEYCOMB SIDE PANEL.
- D - BUTTER LONG 2-FINGER GLOVES WITH MANGO SORBET PRINT



LOOK 2

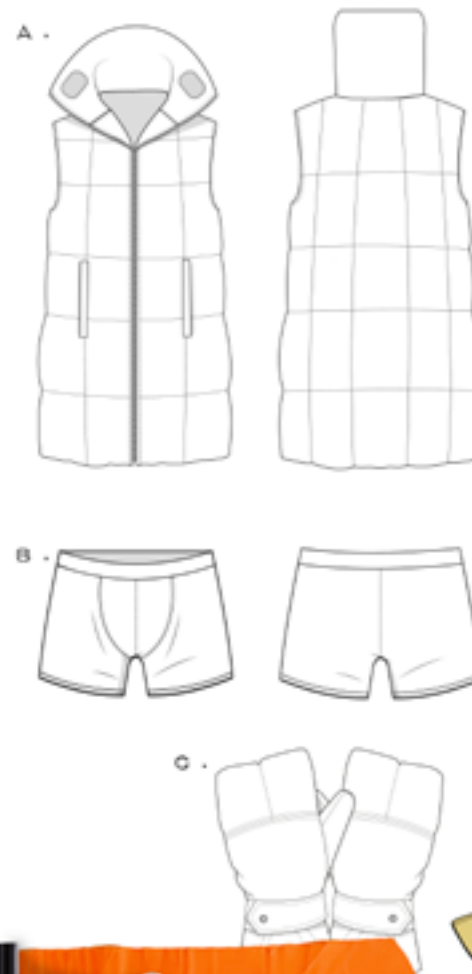


A - MANGO CORNET PUFFER FRONT PANEL HOODED CRISP SPORTS JACKET WITH HIGH RISE HOOD, ZIP FRONT AND ELASTICATED SIDES. EXPOSED ZIP KEY POCKET ON FRONT.

B - BUTTER CRIPPED MINK COLLAR SHIRT WITH SHORT SLEEVES AND PATCH POCKET.

C - BUTTER OVERSIZED LONG SLEEVE SHIRT WITH STANDARD COLLAR PLACKET AND BUTTER FRONT.

D - CARROT ORANGE LONGLINE SPORTS SHORTS WITH HAZARD STYLE CROTCH SIDE SEAM POCKETS AND FULL ZIP UP FRONT.

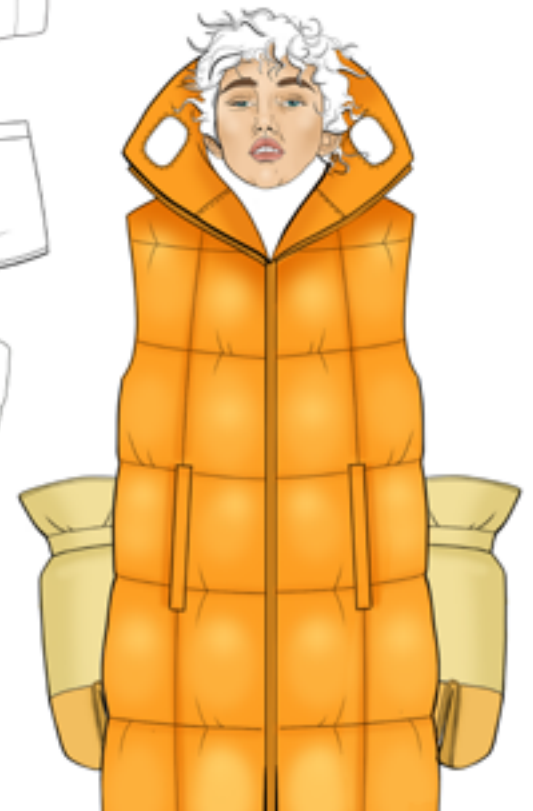


LOOK 3

A - MANGO CORNET SQUARE PANEL, LONG PUFFER QUILT WITH DRAWSTRING HEM AND ZIP FRONT, EXTRA HIGH COLLAR WITH EYE HOLES AND SLANTED WELF POCKETS.

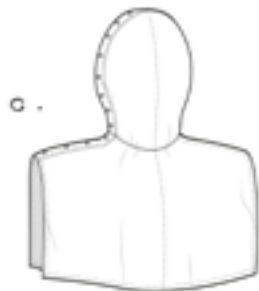
B - MANGO CORNET BODER STYLE UNDERWEAR WITH PRINT CROTCH PIECE DETAIL, AND CARROT ORANGE ELASTIC WAISTBAND.

C - BUTTER OVERSIZED 2 FINGER GLOVES WITH HONEYCOMB FINGER PANELS AND ADJUSTABLE WELCRO STRAP CONTRAST HONEYCOMB PATCH WITH MANGO CORNET PRINT.





LOOK 4



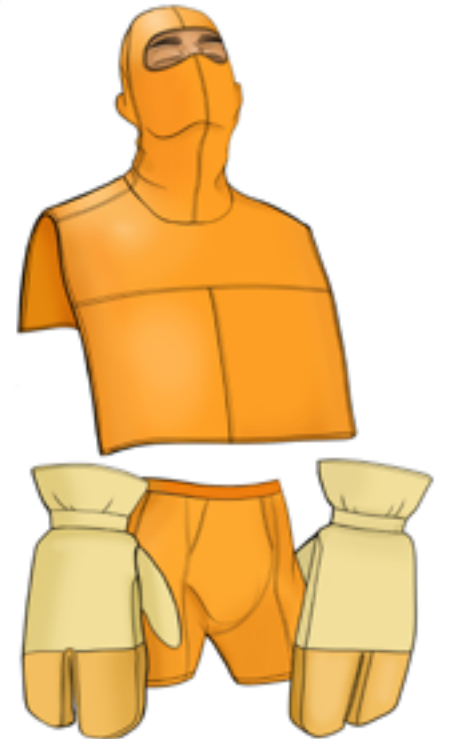
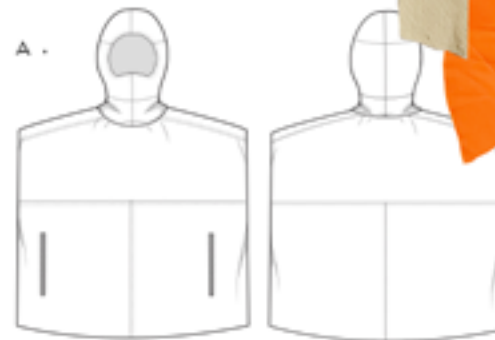
A - CARROT ORANGE SQUARE LATTICE KNT V
NECK VEST BUMPER WITH RACER BACK AND 2X2 RIB
KNT HEM

B - BUTTER BOILER SUIT WITH LONGLINE
SHORTS AND BOILING COLLAR, BLAZER STYLE
BUTTON FRONT WITH SIDE WELT POCKET, SIDE
SEAM POCKETS ON SHORTS WITH FALSE FLY FRONT

C - SHEER BUTTER CROPPED BBI WITH
COMPLETE FACE COVERING AND POPPER FASTENING
AND CONTRAST WANGO SORRETT PRINT



LOOK 5



A - WANGO SORRETT BBI WITH BALACLAVA STYLE HOOD SIDE PINKS WITH EXPOSED ZIP AT
POCKET AND SHOULDER PANELS

B - WANGO SORRETT BOXER STYLE UNDERWEAR WITH CROTCH PRICE DETAIL AND ELASTIC
WASTEBAND

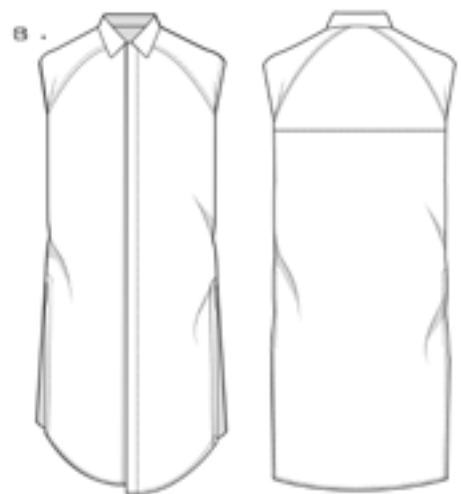
C - BUTTER OVERSIZED 2-FINGER GLOVES WITH HONEYCOMB-FINGER PANELS AND
ADJUSTABLE VELCRO STRAP CONTRAST WANGO SORRETT PATCH WITH CARROT ORANGE PRINT



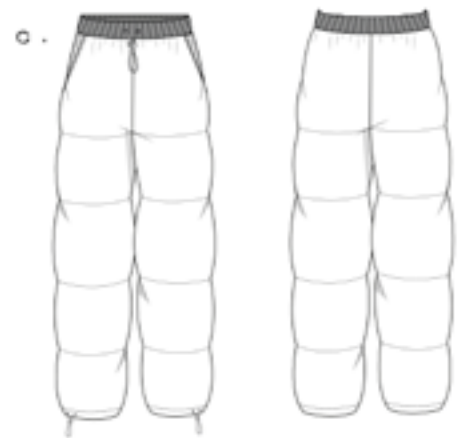


LOOK 6

- A - NANGU CORNET THICK SINGLE WEAVE KNOT ROLL NECK KUMPER BY HOLES AND EXTRA THICK 2X2 RIB KNOT COFFS, COLLAR AND HEM.
- B - BUTTER OVERSIZED FULL LENGTH SLEEVELESS SHIRT WITH CONCEALED BUTTON PLACKET, BATHING SHOULDER SEAM AND BACK YOLK, SIDE SLITS ON SIDE SEAM.



LOOK 7



- A - CONTRAST BUTTER BLAZER WITH PUFFER DETAIL, NANGU CORNET PUFFER FRONT PANELS AND EXPOSED ZIP AT POCKET.
- B - CARROT ORANGE CAP SLEEVE CROP ZIP FRONT TOP WITH OVERSIZED DRAWSTRING HOOD.
- C - CARROT ORANGE PUFFER PANEL TROUSERS WITH DRAWSTRING COFFS AND WAISTBAND, SIDE SEAM POCKETS AND TROUBLE DETAILS.



LOOK 8



A - MANGO SONNET BOMBER JACKET WITH STANDUP WELT POCKETS AND EXPOSED ZIP KIT. DOUBLE CUFFED SLEEVES WITH 2 HEMHOLES AND CONTRAST CARROT ORANGE RIBBING FOR CUFF, COLLAR AND HEM.

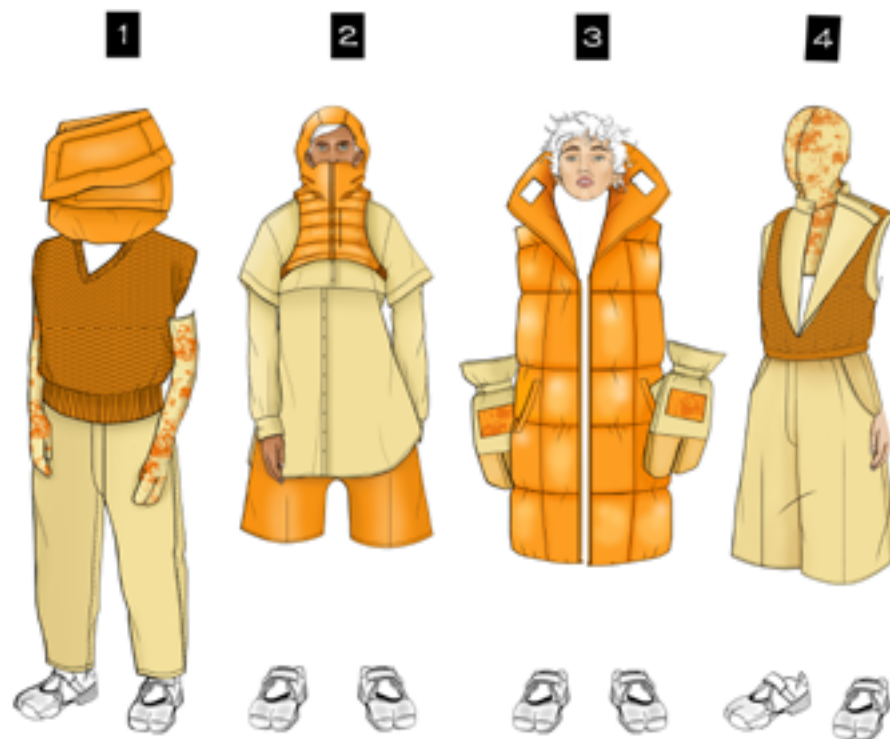
B - BUTTER OVERSIZED FULL LENGTH SWEATSHIRT WITH MANGO SONNET DRAWSTRING CUFFS AND HEM. RIBBED CREW NECK COLLAR, BATWING SLEEVE WITH PANELS.



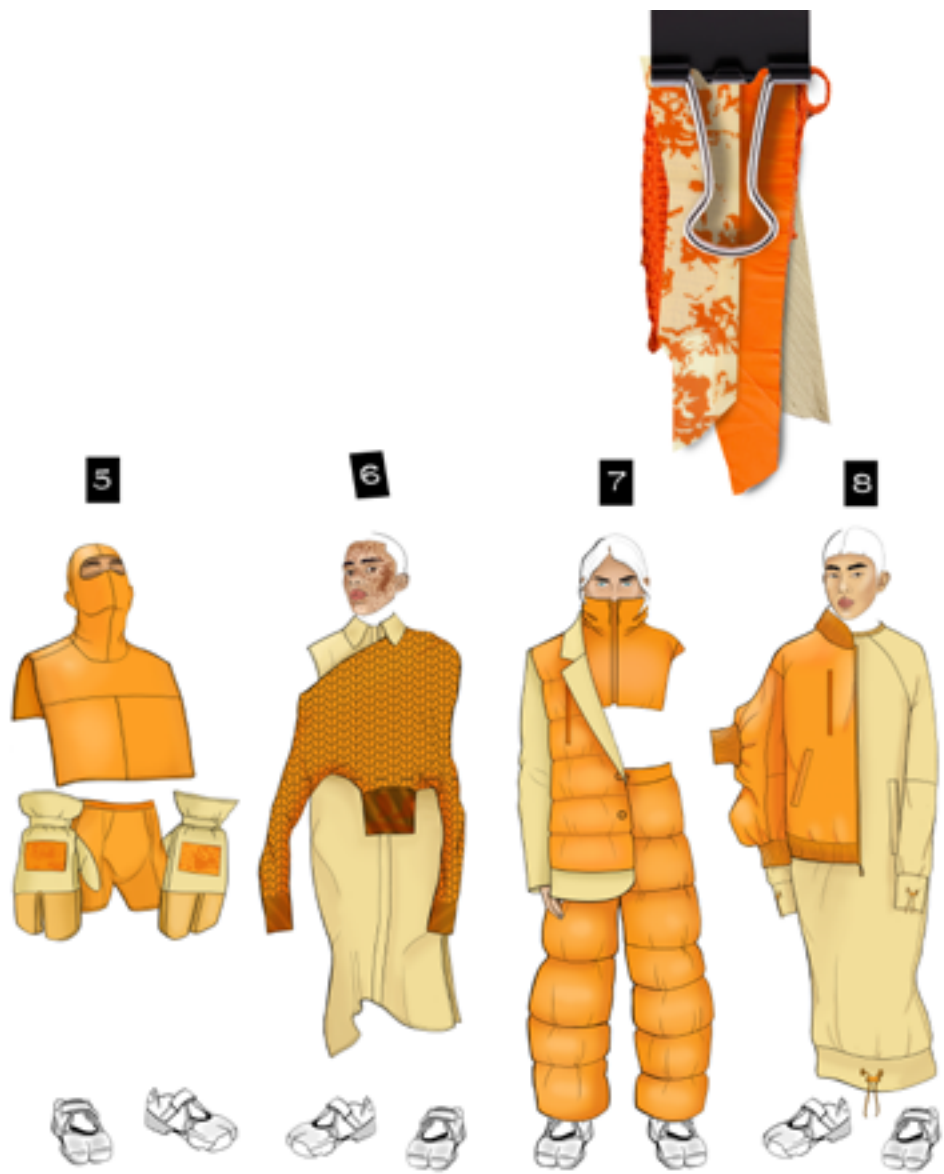
REACTOR NO.4
AW22



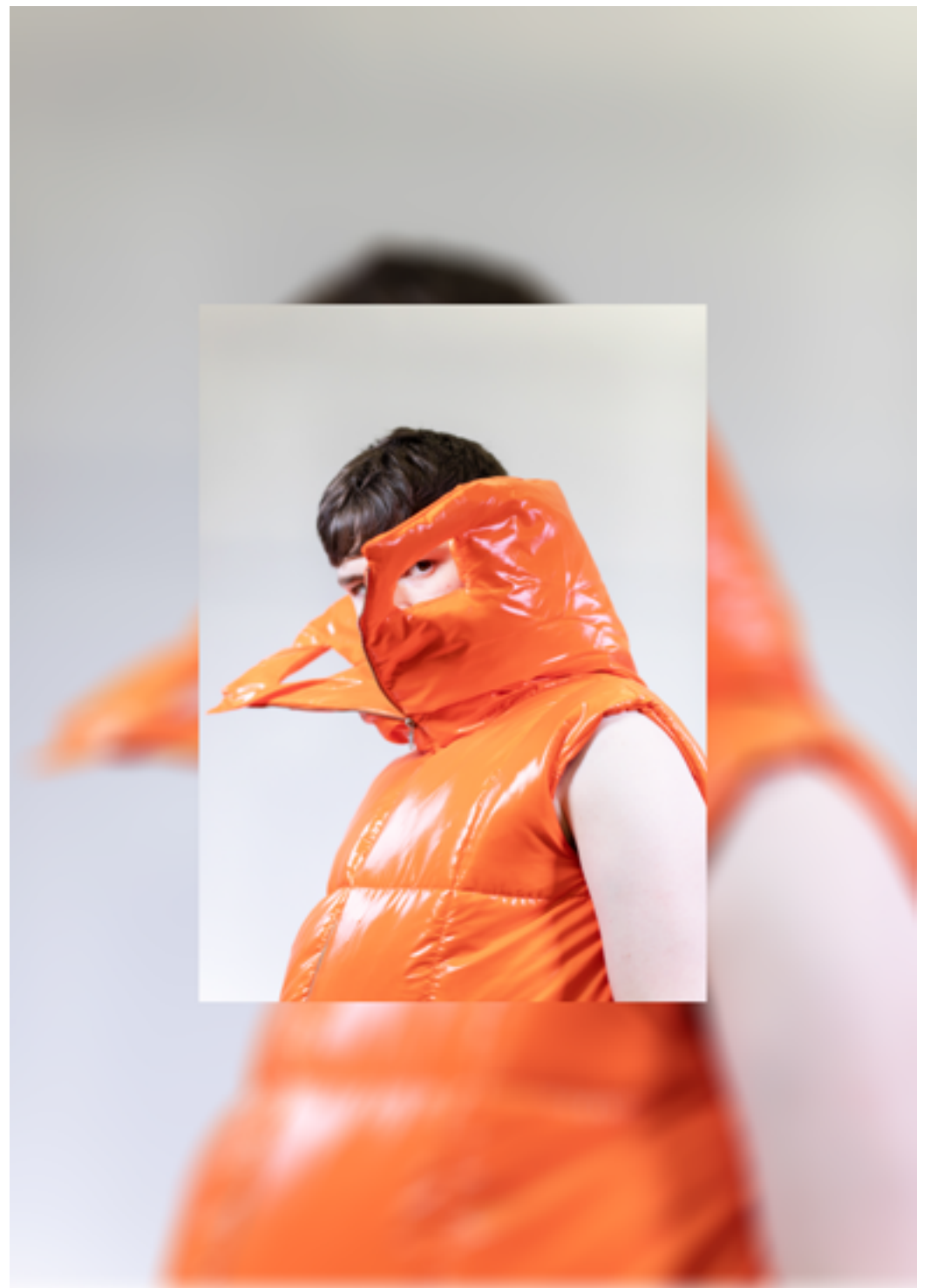
REACTOR NO.4
AW22



REACTOR NO.4
AW22



REACTOR NO.4
AW22



REACTOR NO. 4

03

06
07
08

12
20
21

25

27
28

30
31



AN INITIAL KEY FOCUS ON THE
INFAMOUS CHERNOBYL
DISASTER

AMONG THE SOVIET RUSSIAN
PERIOD.

A NARRATIVE THAT INVOKES
EMOTION AND RAW IMAGERY
EXPLORING THE EFFECTS OF THE
DISASTER AND HOW MODES OF

PROTECTION HAVE INFLUENCED
THE REACTION TO COVID-19.

CAREFULLY CONSIDERING
THEMES OF MUTATION IN
COMBINATION

WITH THE EVOLUTION OF TRENDS
IN 1980 RUSSIA

РЕАКТОР №4



ДЕПАРТАМЕНТ 1



