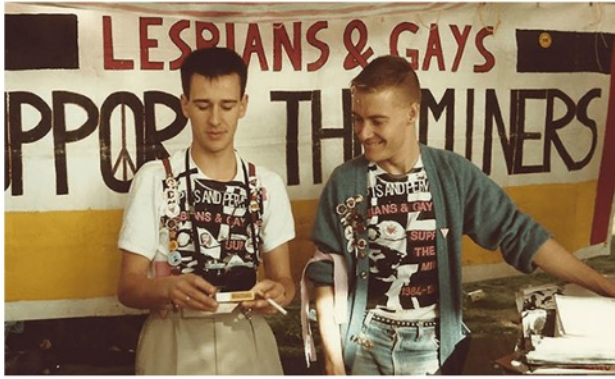


EXCLUSIVE: 2020



BACK TO 1984

SOLIDARITY



PROTESTS STILL HAPPENING AROUND THE WORLD YEARS LATER



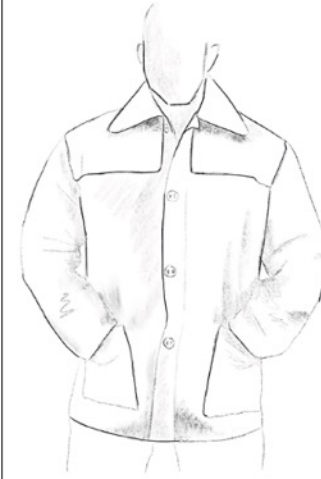
UNIFORMS:

THE POLICE, THE POLITICIAN,
AND THE PITMAN.



DONKEY JACKET

A UNIFORM FOR THE
WORKING CLASS



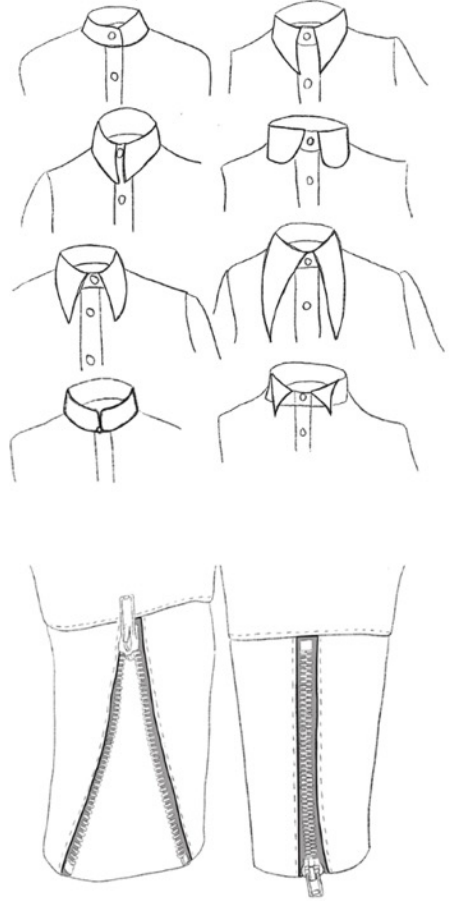
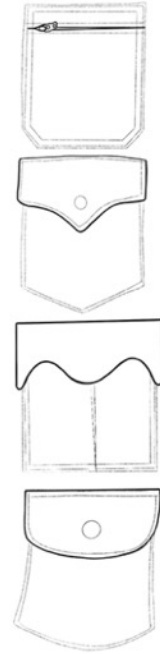
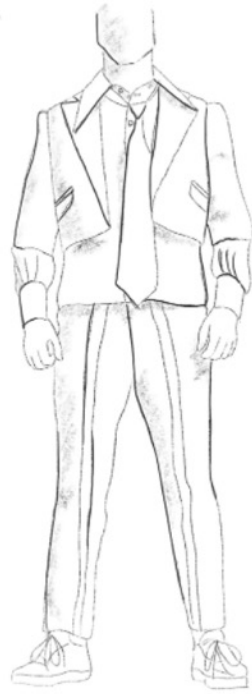
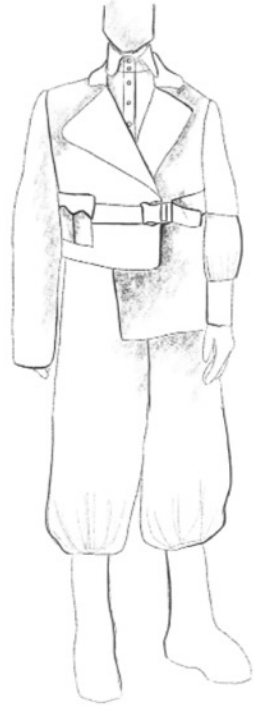
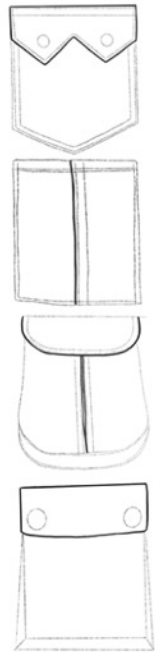
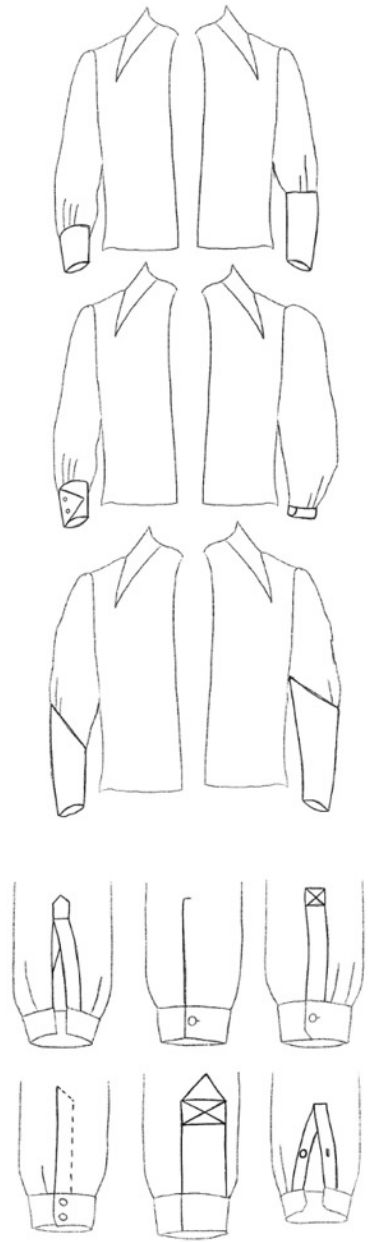
Famously worn by miners throughout different decades, the Donkey Jacket achieved its name from the laborious work undertaken by the workers who wore them but also relating to the donkey engines that were used. Specifically designed to be hardwearing to withstand the harsh weather and working conditions. Often fabricated from woolsack and dark colours such as black and navy with a contrasting material across the shoulders which was often made from PVC or leather. The jacket spiked in popularity in the skinhead culture in the 1970s.

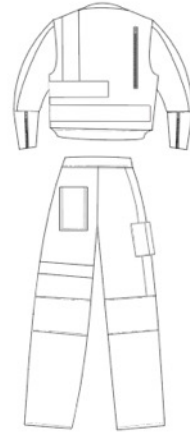
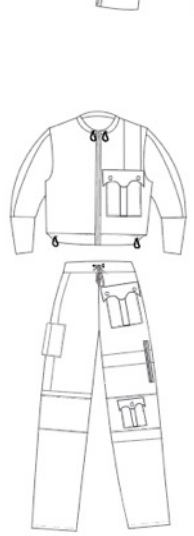
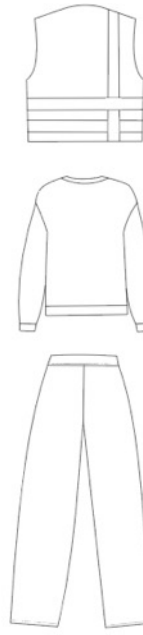
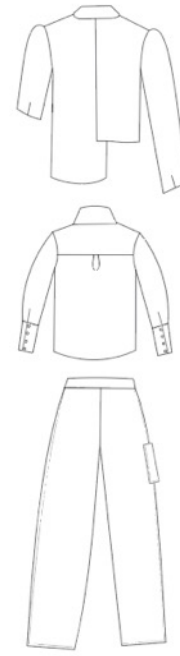
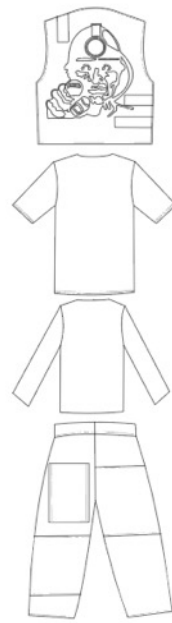
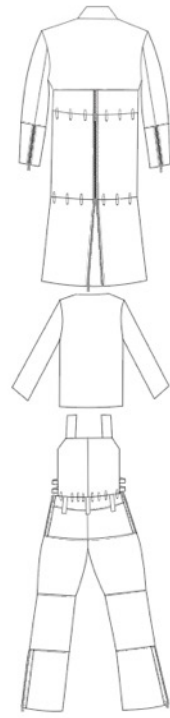


MULTIFUNCTIONAL, DETACHABLE, AND SUSTAINABLE.

Transformable garments align with aspects of ethical fashion design, this allows for consumers to purchase fewer items of clothing due to the appearances being easily altered to provide versatility. These garments can be unclipped and unpinned to change the appearance. The jacket, inspired by the Donkey Jacket, has three layers allowing it to be worn at a full, medium or cropped length. These layers are fastened together by plastic clips and safety pins. The shoulder piece can be removed and reversed to reveal different material and colour. Replacing the vents with zips allows for ease of movement when wearing at each layer. The dungarees are inspired by industrial workwear, adjustable at the shoulders and waist by plastic clips. This top half is also removable by safety pins to allow to be worn as a pair of trousers.







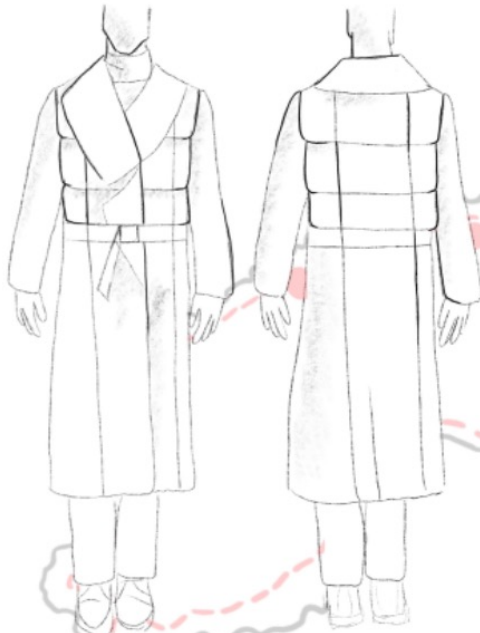


LESBIAN +
GAYS SUPPORT
VICTORY TO
THE MINERS





The final designed looked into merging different elements of safety as an illusion. The large over-sized lapel and collar lays on top of wadding that has been used to create the shape of a life jacket. Inside the seams of the jacket there is to be hi-vis tape which contrasts with the dark material. Fastened by a belt only which is made from a plastic safety clip and brings in slightly on the waist to contribute to the life jacket illusion.



- Levant Mine, Monday 20th October 1919, 31 lives lost
- Dolcath, 20th September 1893, 7 lives lost
- East Wheal Rose, July 1846, 38 lives lost
- Wheal Agar Redruth, 15th August 1883, 12 lives lost
- Newlyn, 15th November 2019, 1 life lost



Exploring hand embroidery as a tribute to those who passed away due to industrial accidents

● Indicates possible areas to place embroidery





