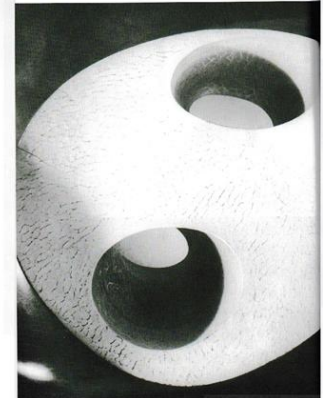


OF WITCHES
AND
DIVINER WOMEN
2021

A CONTINUATION OF

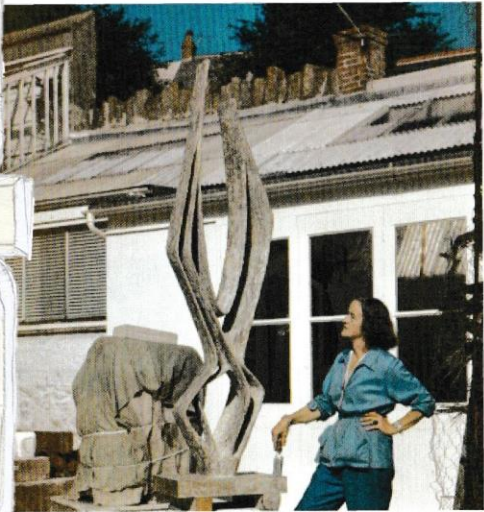


MY PRE-COLLECTION
2020

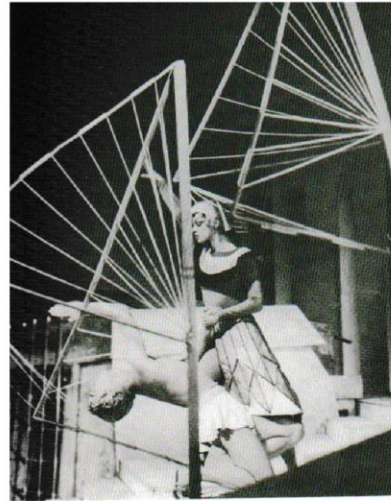
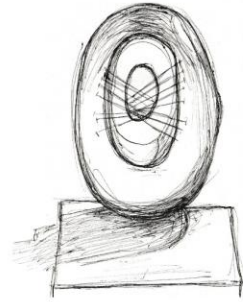


Earth Worshipping, Powerful Women





BARBARA HEPNORTH



166 'Ritual Dance' constructions for 'The Midsummer Marriage.'



167 Wicker and Wicks in the Classroom, Emma Smith



167 Wicker and Wicks in the Classroom, Emma Smith



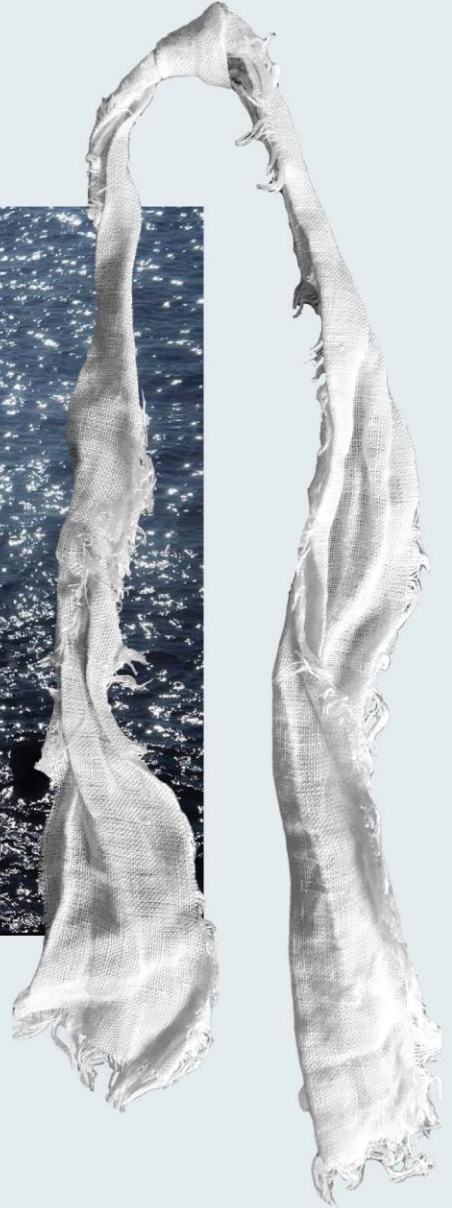
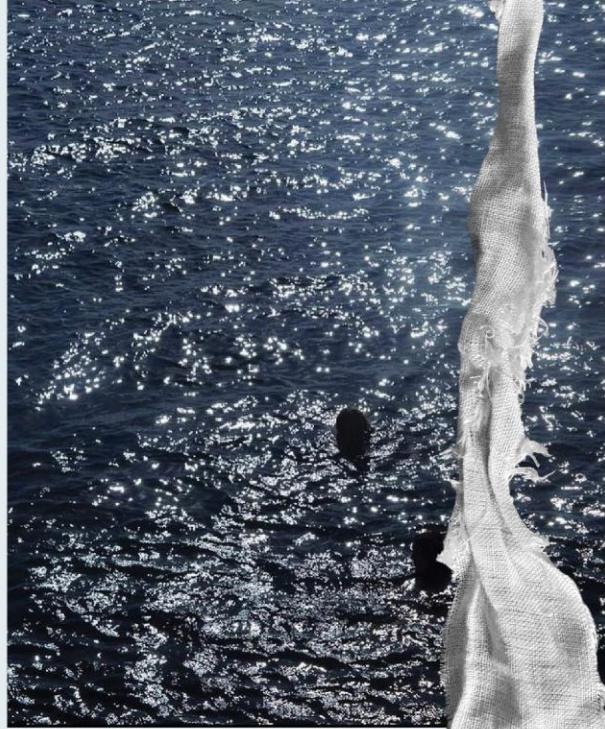
168 Pages 66 and 67 of the magazine as an article by Walter Dreyer

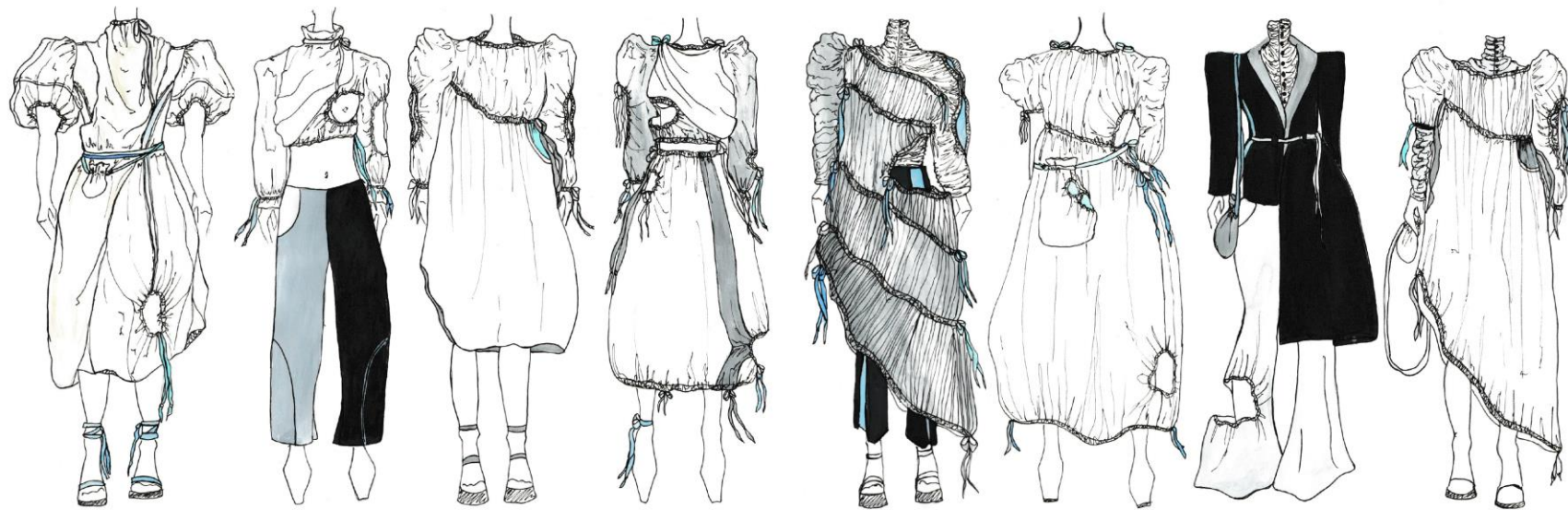


169 (bottom) (bottom) (bottom) (bottom) (bottom) (bottom) (bottom) (bottom) (bottom) (bottom)



169 The bases of Berni & Luch







RANGE PLAN

OF WITCHES AND DIVINER WOMEN - 2021

Tulle SET #1



Tulle SET #2

MORE
STRUCTURE/
POFFINESS
↓
STARCH
PRODDING?

FOR BOTH DRAPED PIECES
CHANGE MATERIAL TO A
HEAVIER JERSEY WITH LINING
INSTEAD



↑
LINE TROUSERS.

↑
REMOVE
SIDE APRON

