

**ZELTBAHN
TELA STELLA
1999**

1. 2. 3. IN 1992, MASSIMO
PRESENTS A NEW VERSION OF THE
ZELTBAHN BASED ON TELA STELLA
FEATURING REFLECTIVE BARS ON
THE CUFFS AND INCLUDING THE
CANVAS FABRIC AND JERSEY HOOD
AND COLORED WIND CHALK
EFFECT. STONE ISLAND 50 1992

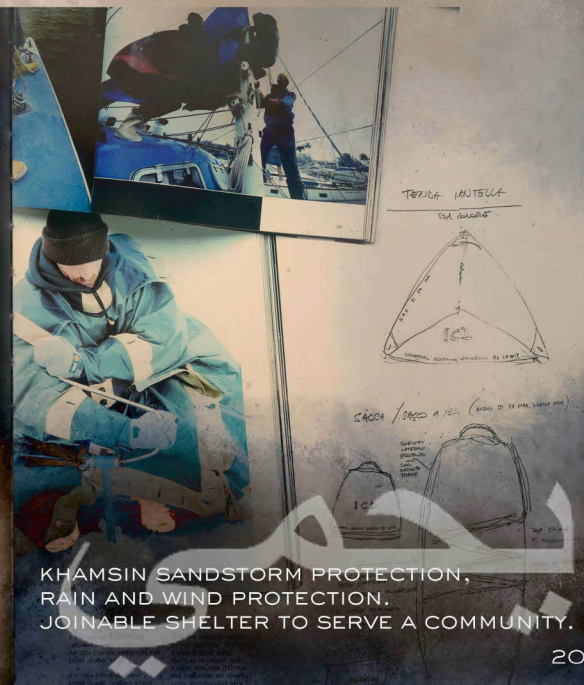


Were these procedures so beneficial?
Certainly, Massimo thought, and
understood that it meant he had
commercially to buy large quantities
of a single fabric at a lower cost,
and then process it himself, print it,
rubberize it, make it coat it, sew it,
and so on. Because this way you
could add any level of fabric,
color, some canvas, some
jersey, some corduroy, some
different fabrics. It was a
process of trial and error, through
experiments, one could obtain every
type of cotton in



**ZELTBAHN RIPSTOP CANVAS
ICE ITERATION 1990.**

DESIGNED WITH A DESERT ENVIRONMENT
IN MIND. SUSTAINABILITY, WEIGHT,
SHELTER AND SERVICE ARE KEY FACTORS
FOR THIS DESIGN.



**KHAMSIN SANDSTORM PROTECTION,
RAIN AND WIND PROTECTION.
JOINABLE SHELTER TO SERVE A COMMUNITY.**

جلابة

SEMIOTICS / ICONOGRAPHY



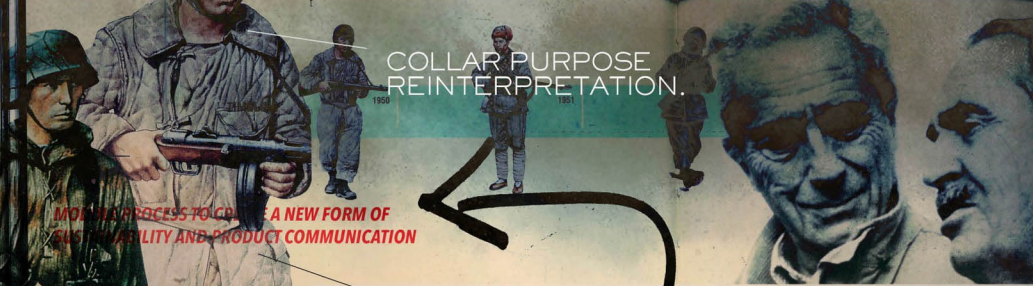
1970s
Berber people,
Middle Atlas Mountains
men's hooded robe (jellaba)
1970-1980
wool
L: 130 cm, 110 g
Lanille Stewart Es



2000-1997
Berber people,
Middle Atlas Mountains
men's hooded robe (jellaba)
early 1990s
wool
L: 130 cm, 138 cm
Gift of Mr. and Mrs. Sidney Tamm



**CULTURAL SEMIOTICS.
DJELLABA & MILITARY ZELTBAHN
JUXTAPOSITION.
USING THE ELEMENTS OF ANTITEHESIS
BETWEEN BOTH OBJECTS TO INFORM A
HARMONISED PRODUCT.**



**MORE PROCESS TO COLLECT A NEW FORM OF
ABILITY AND PRODUCT COMMUNICATION**

**COLLAR PURPOSE
REINTERPRETATION.**

QUILTING REFERENCE.



ARTICULATING THE FACE



Transformation 1: Creating a beanie with the twisted pattern. The hood can be worn as a beanie. The hood can be worn as a beanie. The hood can be worn as a beanie.

Transformation 2: Hood neck warmer. Twisted pattern. Worn as beanie hat shows. Moroccan brain detailing can be removed.

وجه مخفي



LOOK 1 MODERNISED FRENCH FOREIGN LEGION SILHOUETTE FUNCTIONAL DOUBLE BREASTED TRENCH COAT, JUMP SUIT ADJUSTABLE TROUSERS



HOOD QUILTING PROTOTYPING.



ALPENFLAGE REFERENCE.

STICKS & ROPE: DUTCH ROPE SYSTEM.

METHODS OF CONNECTIVITY BETWEEN MODULES



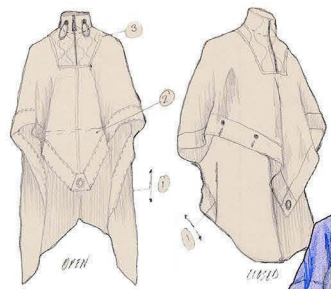
HOOD QUILTING PROTOTYPING. SEAM SEALING TAPE REVERSIBLE PRODUCT.

SEAM SEALING TAPE & NODULAR ANATOMY

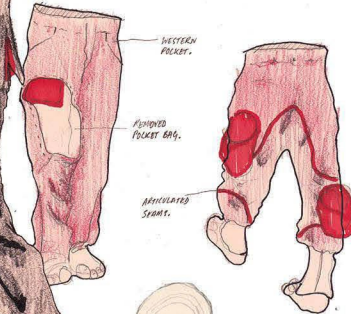
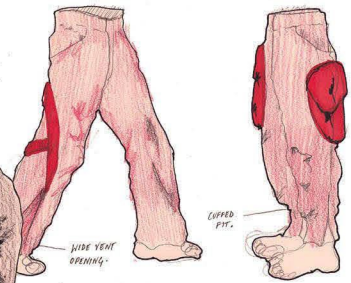
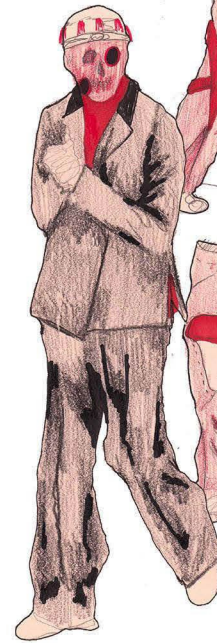
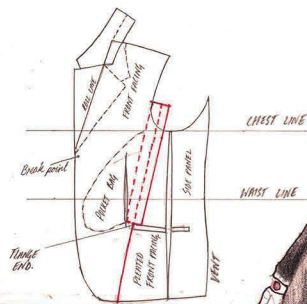
...encyclopedic of
...details which need to
...criteria of absolute efficiency,
...above all, if the job is carried out in
...extreme conditions: at the bottom of
...the ocean, on arctic icecaps or in
...the capsule of a spaceship. The suits
...of deep-sea divers, astronauts and
...pilots become a continuous source
...of inspiration for Massimo. Starting
...from their particulars, completely
...outside of fashion, he creates an
...of
...of
...of

"In the 60s, only the military took
...the functional aspect of clothing
...seriously, and right from the
...beginning, it has been the central
...focus of my work. Research is the
...thread which I follow in my career."
...Interview with
...Dante

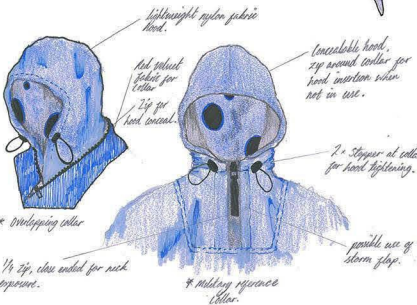




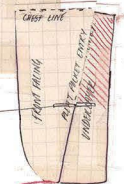
ON THE GO



- ① Conceal junction of invisible zip inserted at flange end of the side seam. When zip is pulled down, the fabric gathers like a elastic skirt. when zip is pulled up the fabric at this amount on the hemline begins to expand, like an open skirt. To be tested.
- ② To be tested: fold line at this point to raise front facing inwards and securing the fold via buttonhole. This function opens the underlayer for use.
- ③ Upper backline and collar zipper and fastener junction. Section to be quilted with the use of osanoma fabrics.



- Front facing of tailored coat:
- * Bi-Swing or front transferred from back onto the bi-Swing. Repair of front bi-Swing is for increased range of motion.
- * Front bi-Swing panel from armbolt eye down to get pocket to have a zip entry pocket bag underlayer.
- * Front panel separated into two pieces.
- * Ribbed collar
- * 15mm buttons and hand sewn buttonholes.
- * Rib lining, fabric to be tested and tested. 3 different shades of red to be tested.



zip pocket and post flange end.

