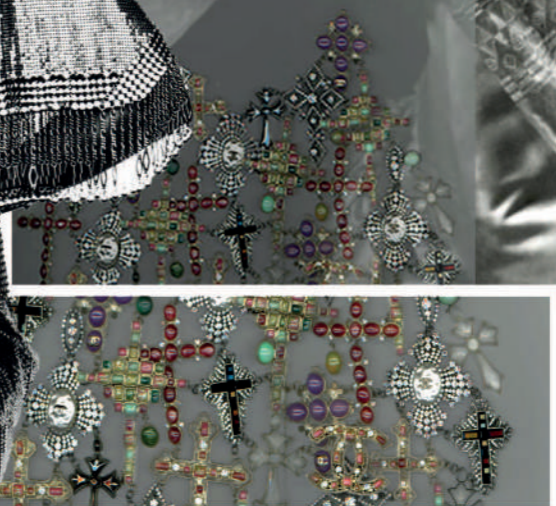
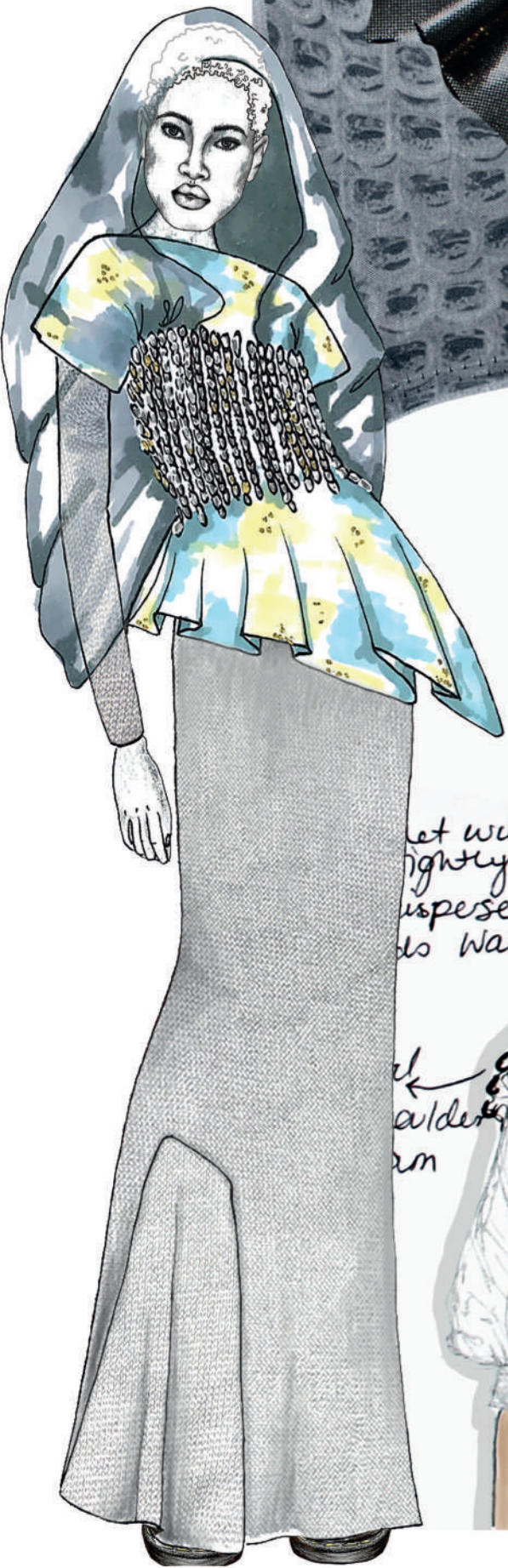


A
FLAMBOYANT RESPONSE TO THE
PATHS OF GOTHIC LITERATURE THAT SPIRALLED
FROM A TIME OF ENTRAPMENT WITHIN THE VILLA DIODATI
IN 1815. TAKING THESE DARK MOTIFS OF INTENSE
EMOTIONS INTO A FASHION FORM USING TRIANGULAR SILHOUETTES
FROM ECCLESIASTICAL DRESS AND VILLA DIODATI, ALONG WITH AN
ESSENCE OF EACH GARMENT REFLECTING PRECIOUS YET SINISTER
HEIRLOOM; VIA THE FABRICATIONS AND METALLIC EMBELLISH
MENTS. THIS COLLECTION IS RELEVANT TODAY IN EXPRESSING
PEOPLE'S NECESSITY FOR FAITH IN TIMES OF DIFFICULTY
AND A NEED FOR RELEASE FROM MODERN
ENTRAPMENT.

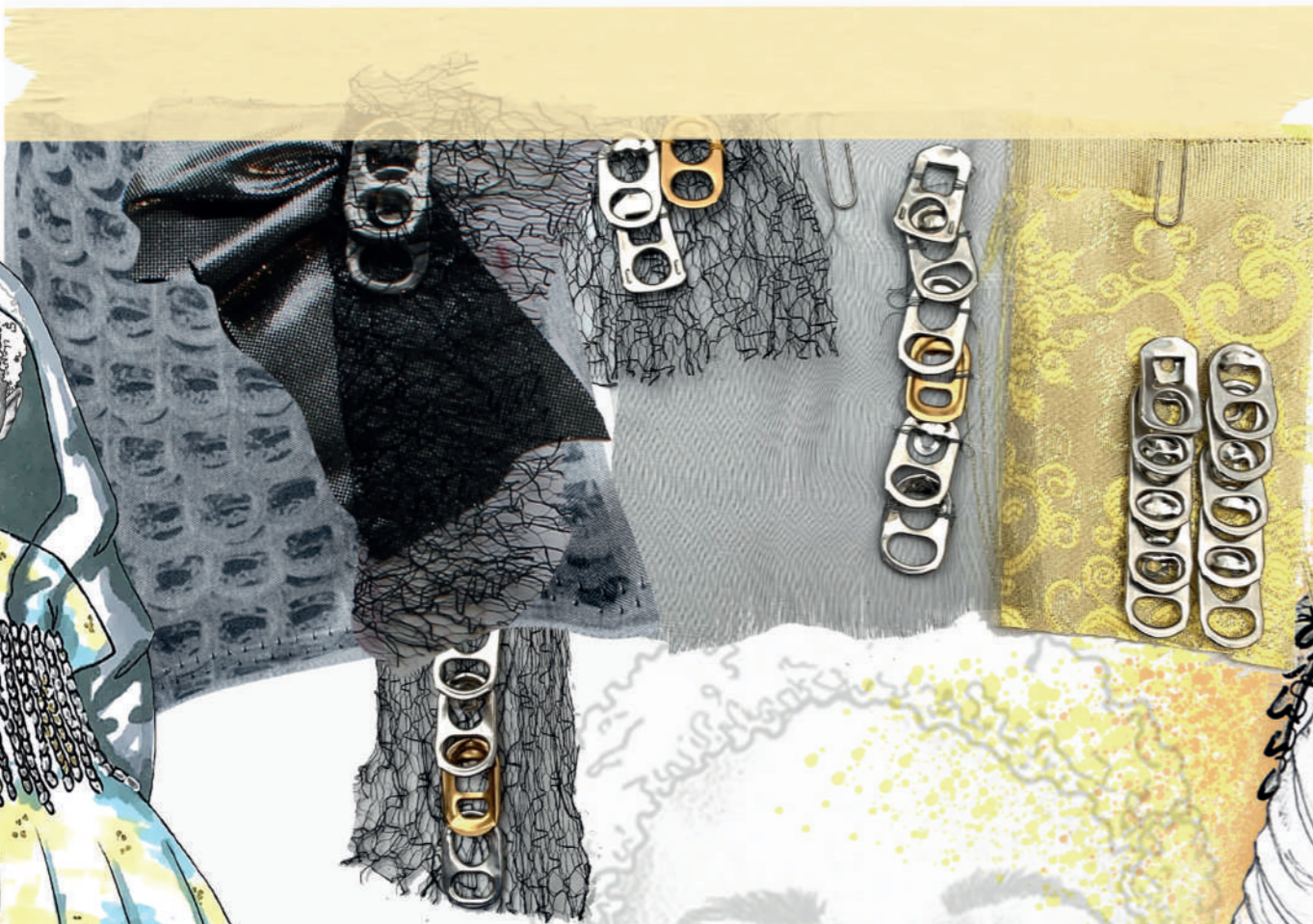
EMOTIVE
AND SOMEWHAT SINISTER WITH
AN UNDERLYING PRECIOUSNESS AND HINTS
OF DESIRE. FLAMBOYANT YET SOPHISTICATED IN
COLOUR, SILHOUETTE AND FABRICATIONS.





set with ring
tightly together
respese.
do waist

al
alden
am



coif
made of net
lace covered
entirely in pull
rings



Pull ring
in stripes

pull edge
of lace

Pull rings
around all
seams

could dispense
at edges
lace

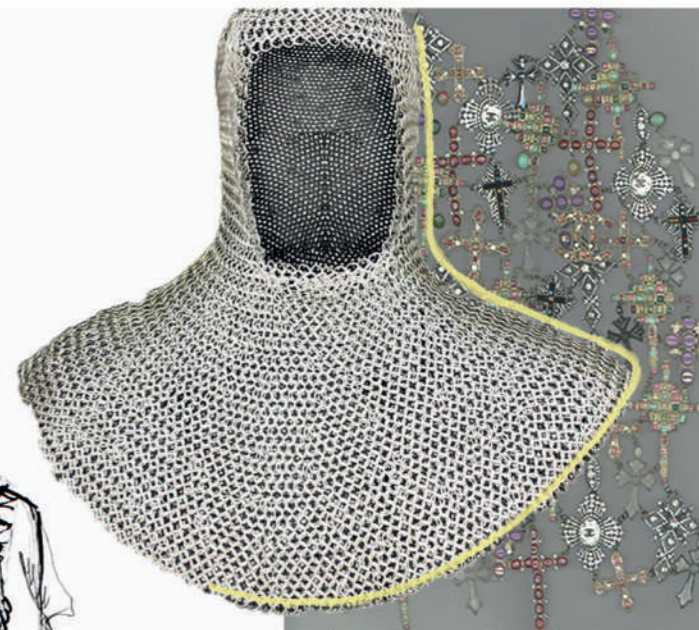


Each stripe
continues
past
the hem

Lace and
pull ring
rests to
sit over
top of
delicate
organza
pieces



pull ring tassels



AND STITCHING TO CREATE THE TRIANGULAR DEFINITION THAT IS PRESENT IN THE ECCLESIASTICAL DRESS OF NUNS IN MY RESEARCH

AN ARTERION IN BLACK NARRISONS



Blue & gold jacquard!



Gathers

Good amount of flow in calico but could be too much in organza

Battened up back.

Double layered

Box pleats instead of gathers

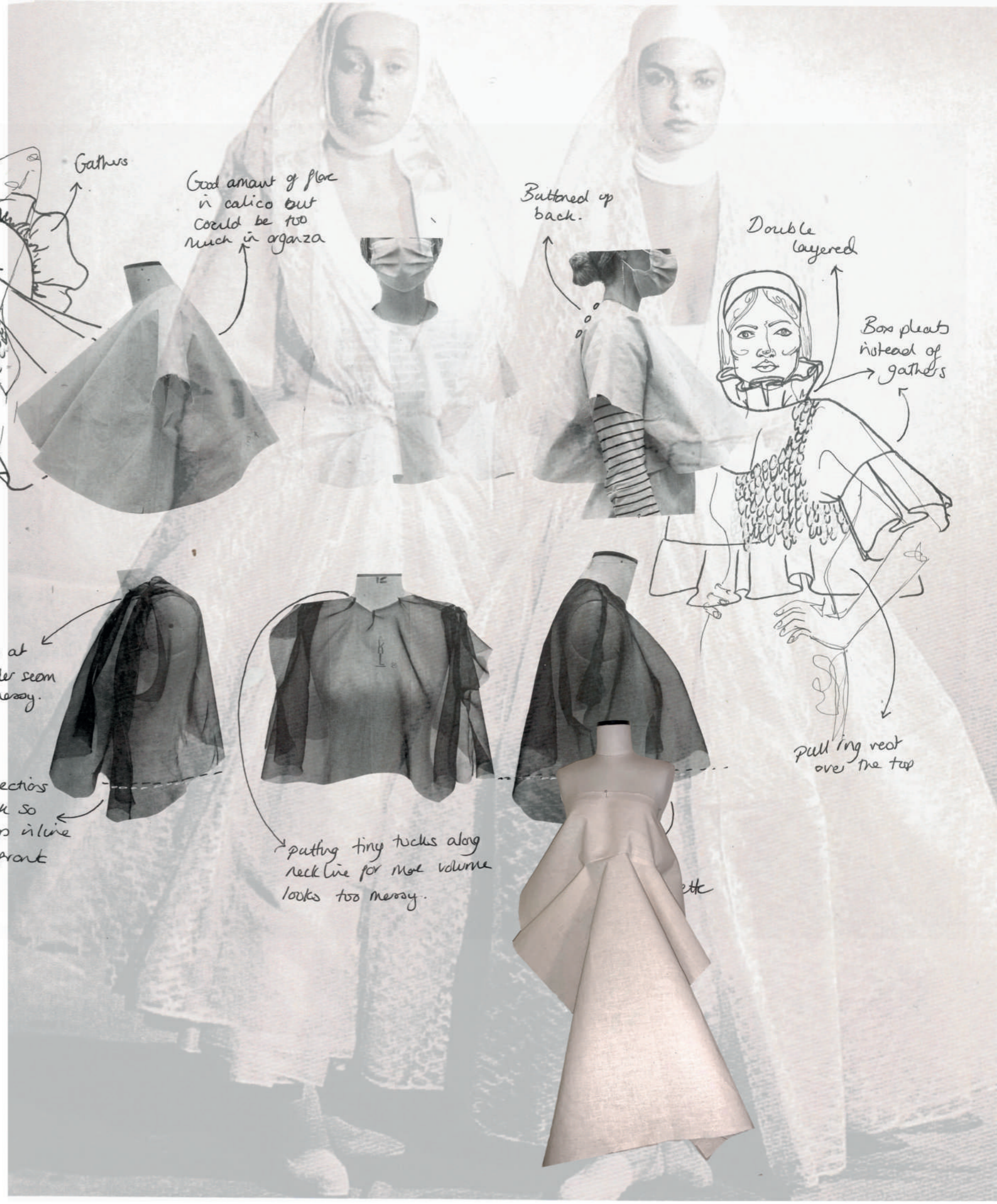
pulling vest could be made much smaller.

Tucks at shoulder seem too messy.

Remove sections from back so it hangs in line with front

putting tiny tucks along neck line for more volume looks too messy.

pulling vest over the top





Fabric combination for this outfit.

could be another outfit.

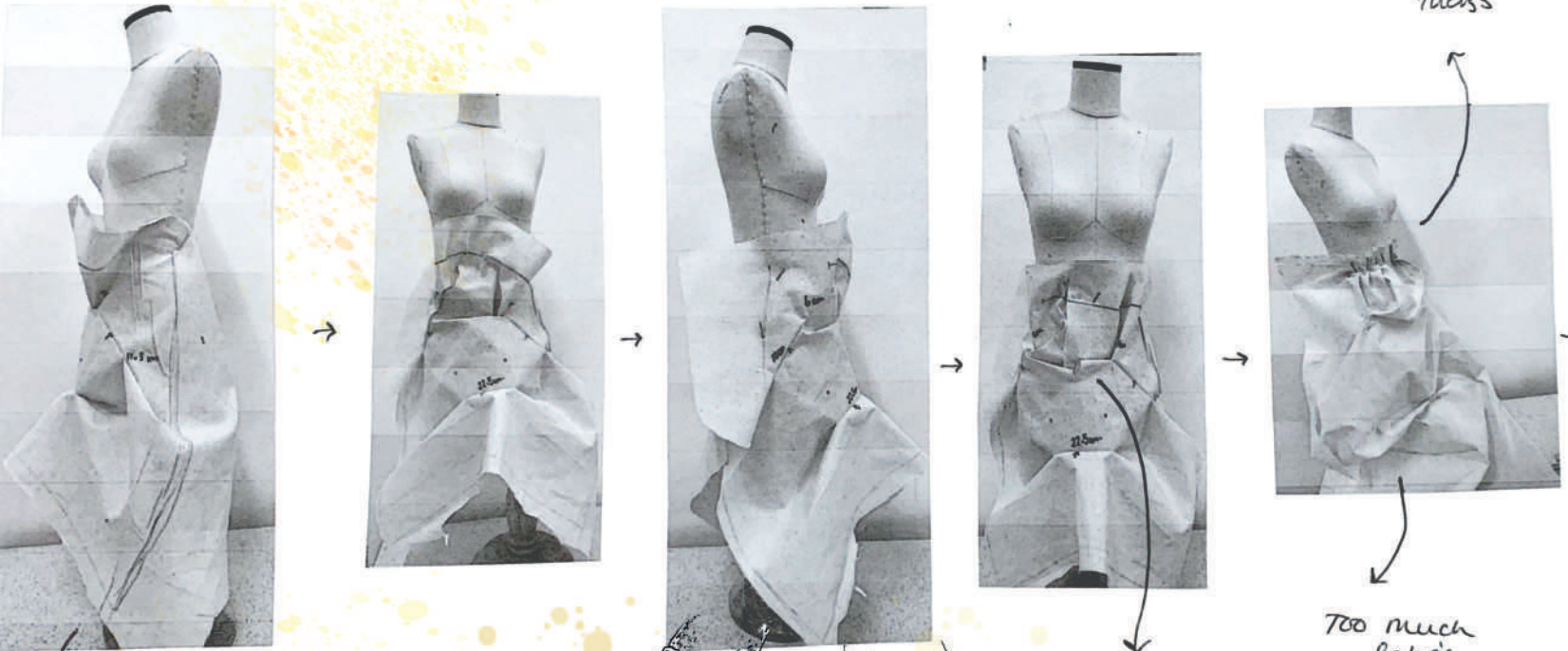
top

skirt

12

what colors?

Exploration journey of diamond manipulation into skirt - outfit 1.



Neaten and reduce tucks



Move manipulation much higher.

Too much fabric

Manipulation pulled too much so slashed along fold between

Starting with a rectangle and adding manipulations onto the band.

