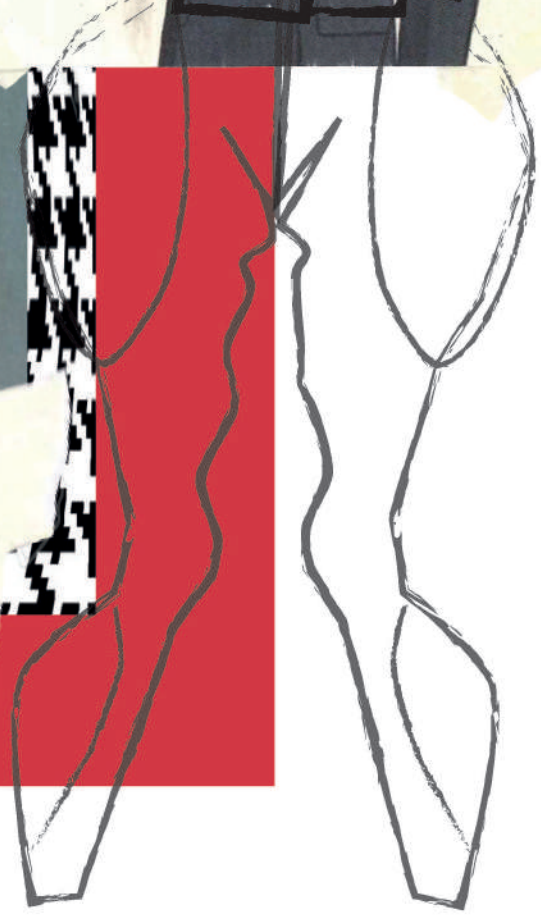
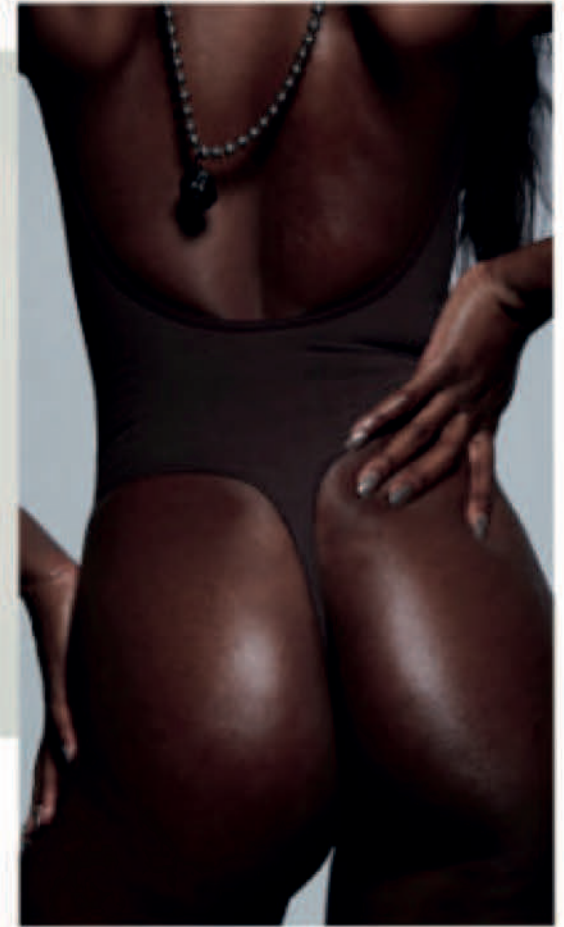
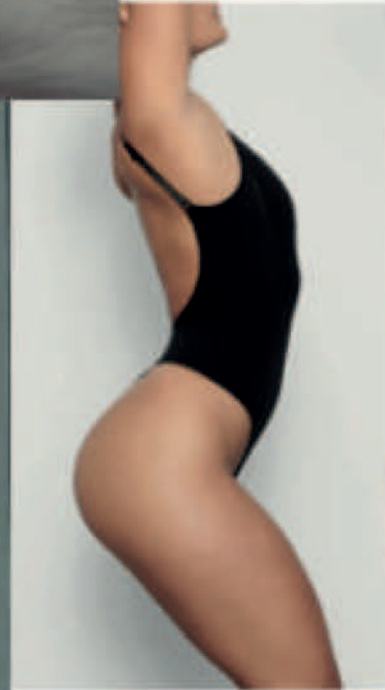


SHAPE of A
WOMAN



MID 19TH CENTURY - 2020



18TH CENTURY vs 2020 SHAPEWEAR

Corsets used traditionally (historically) to create shape within the body

→ how can this be modernised??

Tights/foundation garments with attached padding matched with slays + corsets

Men's Shapewear included hip padding + calf padding

could create a feature out of need on trousers



A Modern Venus.

or a Lady of the Present Fashion in the state of Nature, 1786.
This is the Form, if we believe the Poet
of which our Ladies are, or wish they were.

Published as directed by the Spectator, New-Street-Passage, Black-Market.

1786. A Lady of the Present Fashion in the state of nature



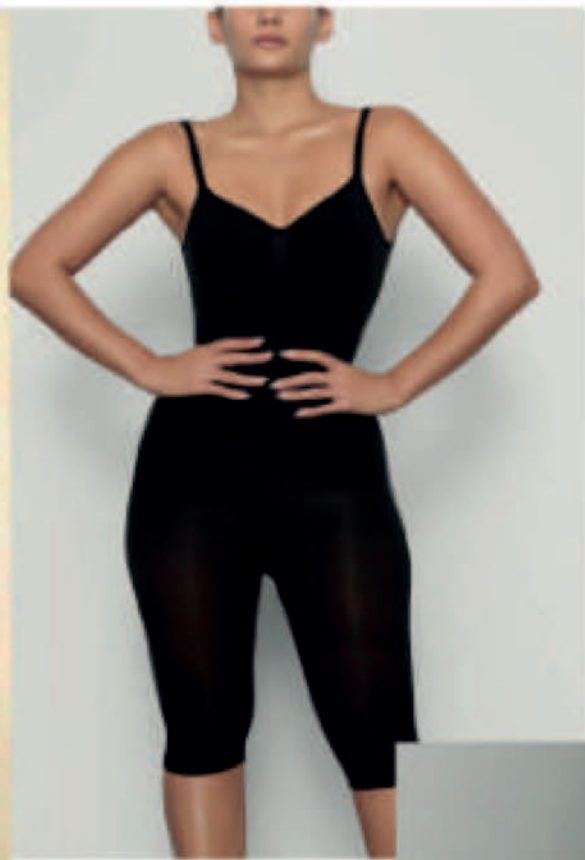
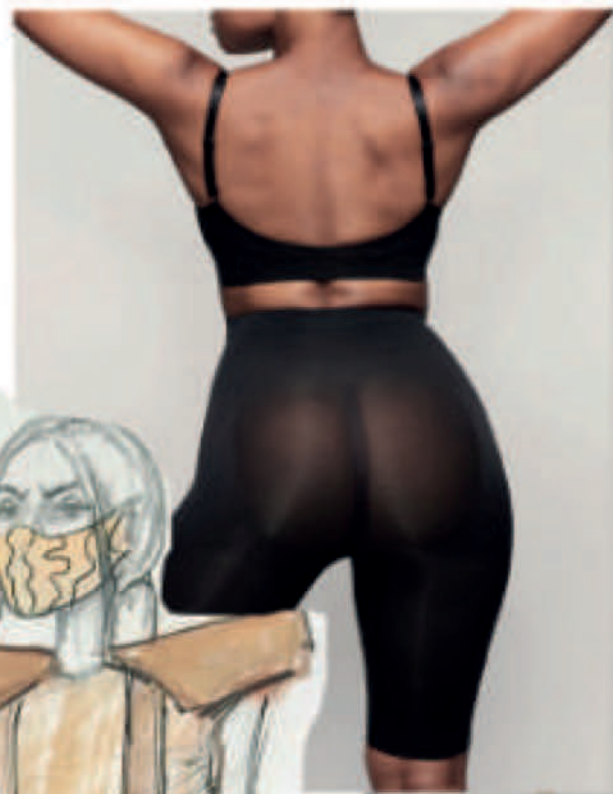
Catalogue des Grands Corsets 1901

Corsetry is a good way to create shape but look into details



CREATING SHAPE IN THE BODY THROUGH HISTORY

Thomas Tegg, 1819



Cotton Satin
print looks less
crisp than on the
twill but the scale
is better + looks
interesting next to
smaller print

Sinky lycra print
looks really good
traditionally tailoring
print on a stretchy
material fabric

Cotton Twill
fabric has a
good weight
+ structure
print is crisp
but need to
play with scale

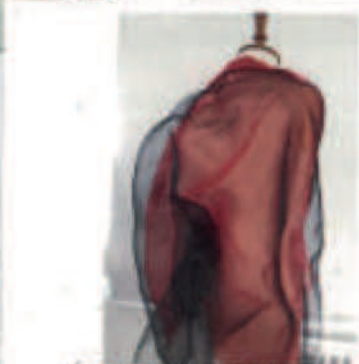


**DISTORTING MY
PRINT**

I think that the warps on my
prints are really successful + effective
→ I think I could change the brown colour
to make them more exciting
→ push the scale + experiment on the
body

SMOKING

Mae West was reported to be a chain smoker
& although it wasn't known to be as bad as now,
it speaks to her... devil may care attitude



20201027_151204.jpg



20201027_151210.jpg



20201027_151214.jpg

What if organza
acted like an overcoat
to a tailored piece??



20201027_151132.jpg



20201027_151136.jpg



20201027_151145.jpg



20201027_151150.jpg




↓
This organza draped over fabric
looks like a representative for smoke
↳ Mixing tradition with rebellion



could I use this as the basis for my silhouette?

Look @ Tight Lacing




DEPICTIONS of WOMEN
WHAT IS THE IDEAL WOMAN?

The proportions of these fictional women drawn to depict femme fatale 'perfect women' are so extreme

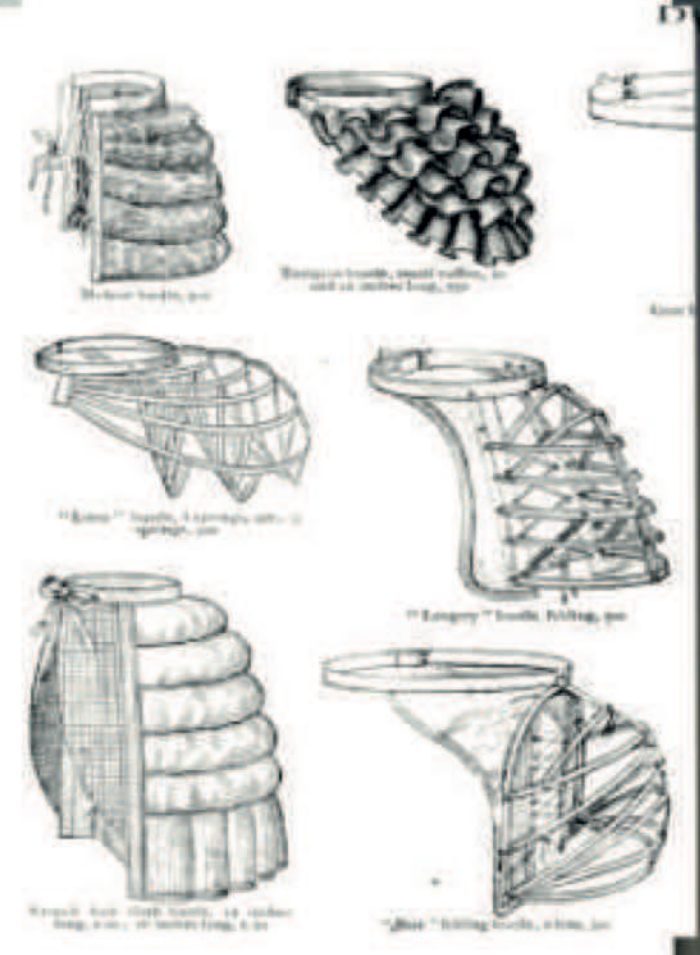
* PUSH → What is the shape of a woman?

Is this the body women strive for

Tight lacing corsetry gives these mad proportions



BUSTLES



Wadding filled pads are heavy + pulling the waist band down

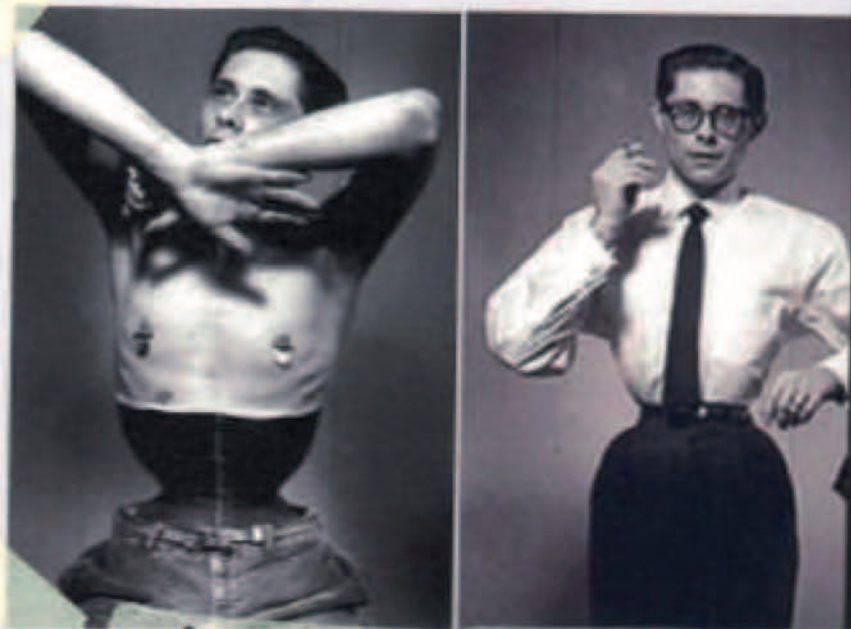
- * Need to create an inner mechanism to hold and support shape of jackets
- * Traditionally used to exaggerated posterior
 - ↳ padded bum rolls
 - ↳ layers of gathered fabric

Mixed fused calico + tulle to keep it light + this held shape well

could be used in jumpsuit top



Mr. Pearl is an accomplished corset maker and made both the garments on the left and right the combination of corsetry + shape wear is striking



SUITS AND CORSETRY

Suits are an incredible source of structure + shape on the body

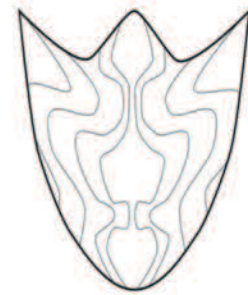
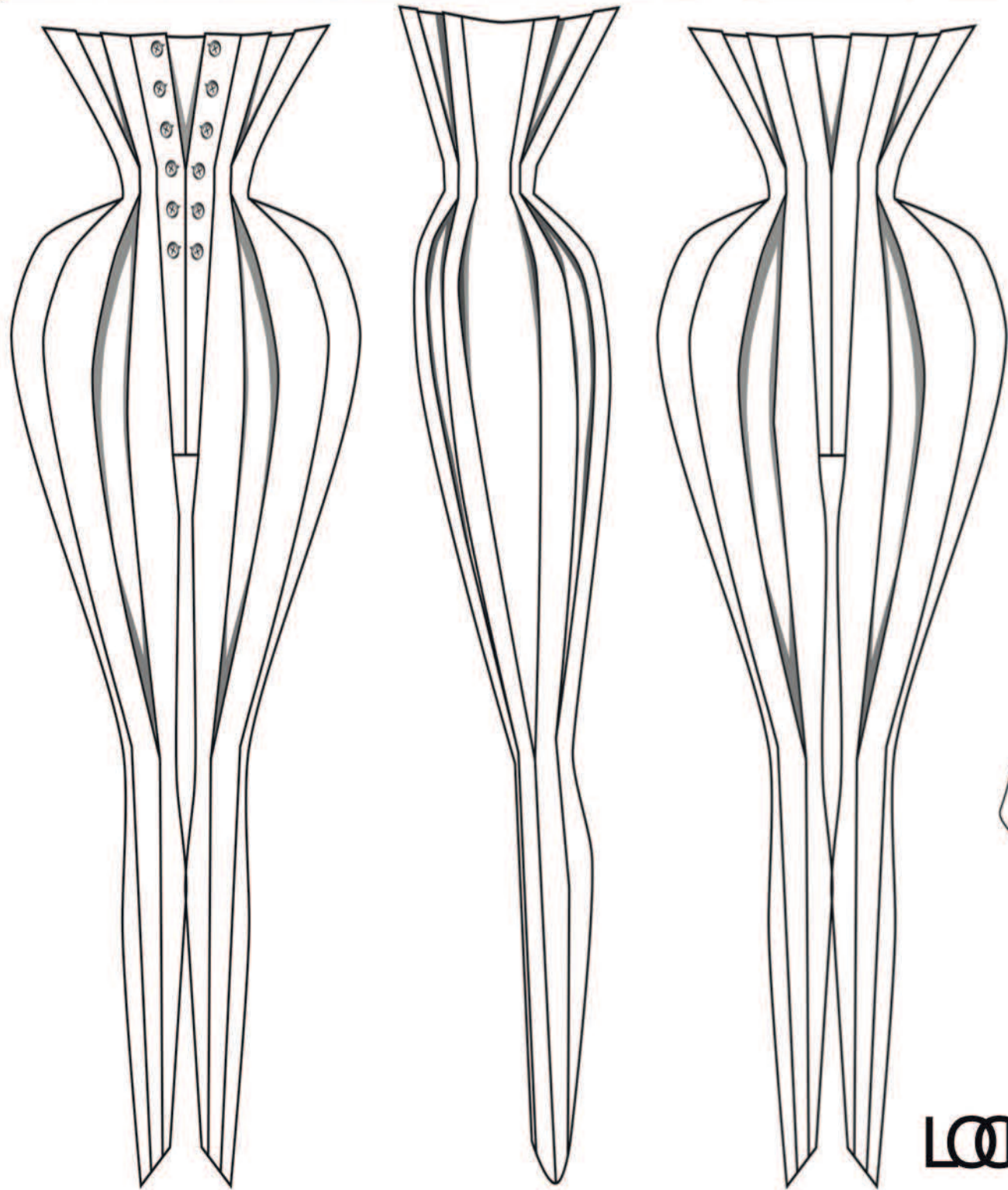
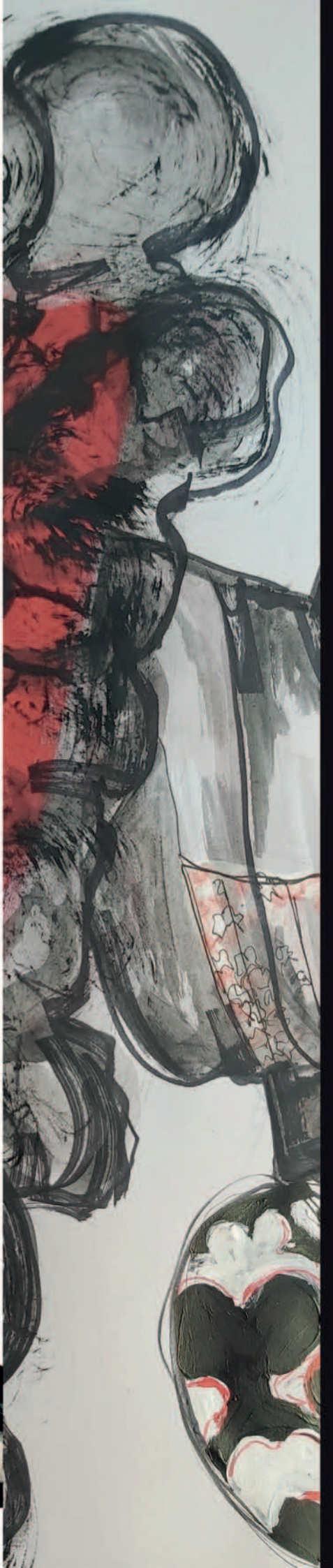
A symbol of masculinity mixed with a symbol of femininity?



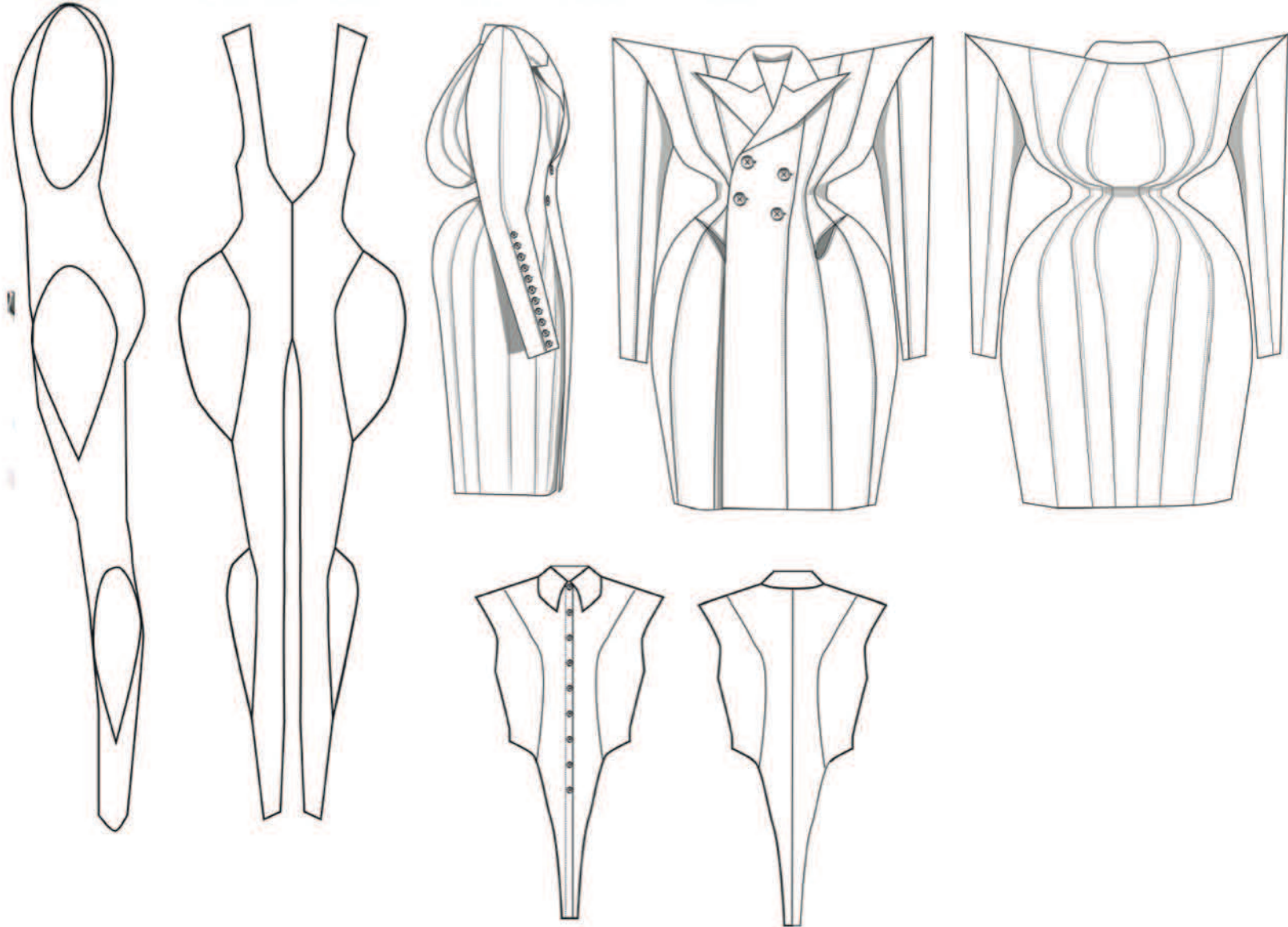
Would translate well into a corset

I found these suits from a gentlemen's gazette from the 30's + the illustrations of the exaggerated shoulders + 'V' shape is beautiful

→ double breasted suits are really beautiful ←

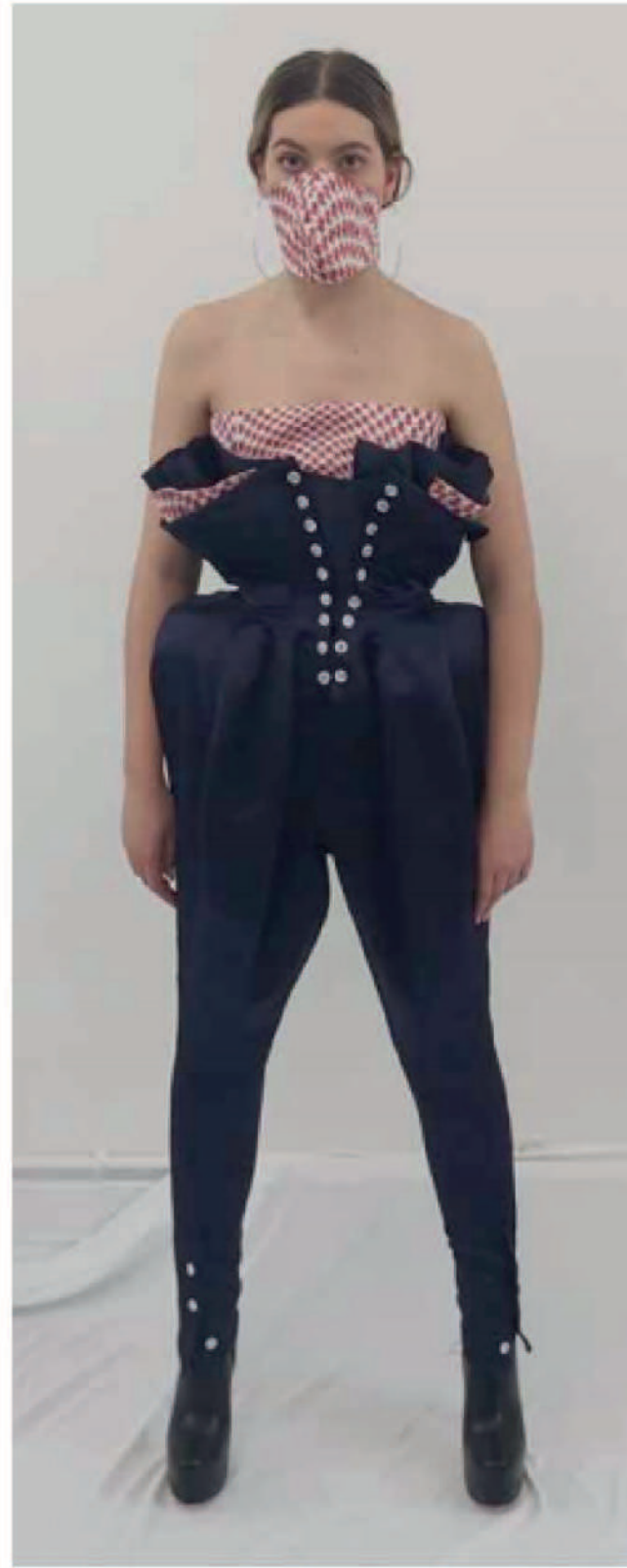
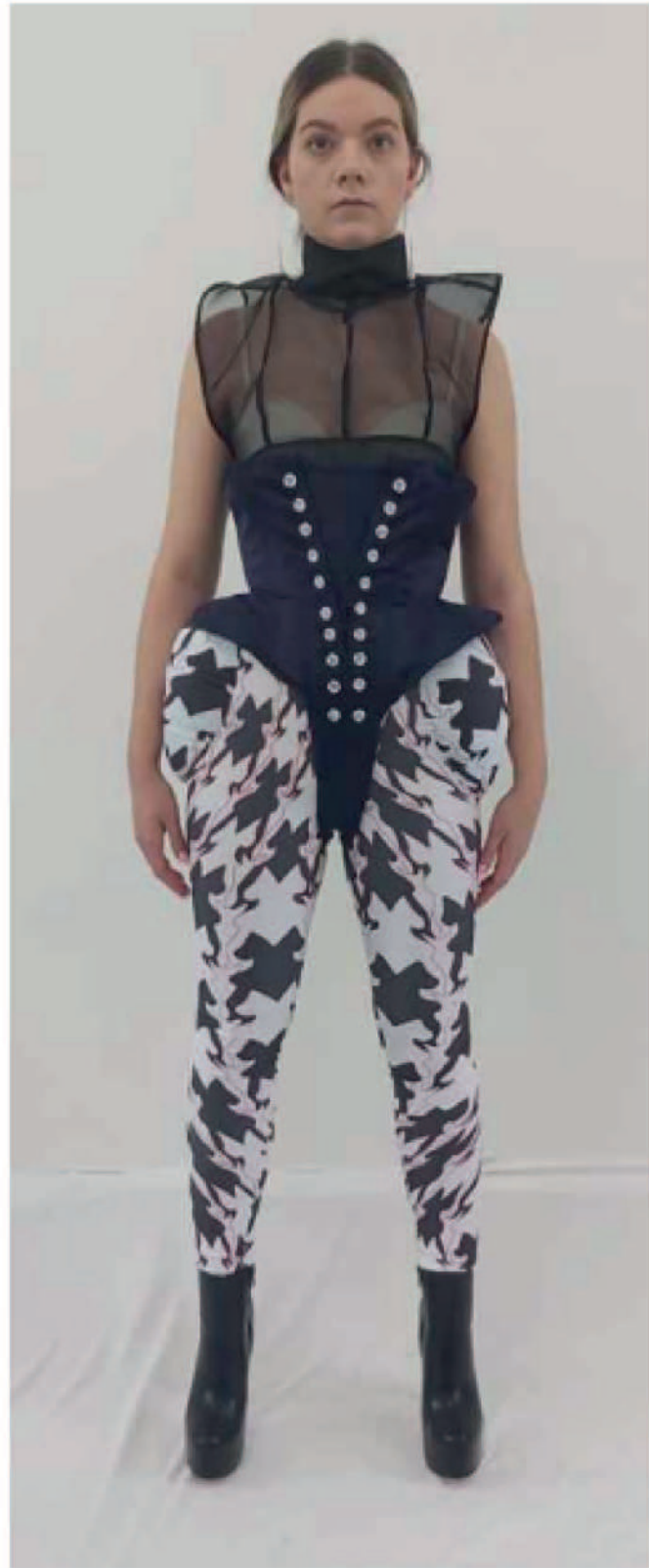


LOOK3



LOOK 1





LINE UP