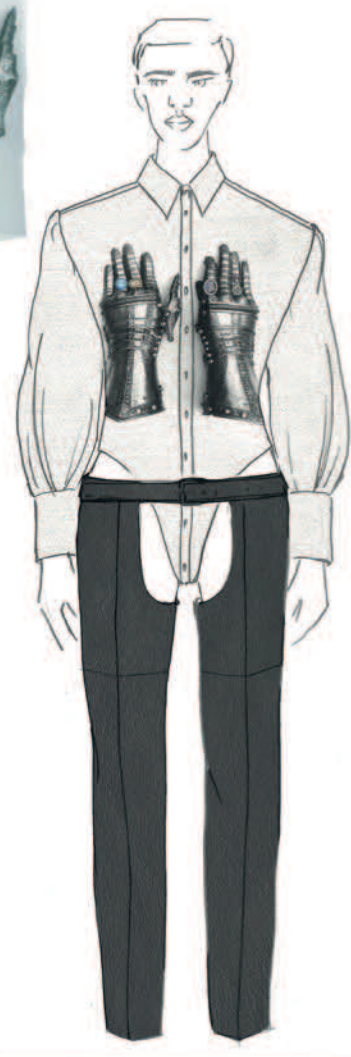
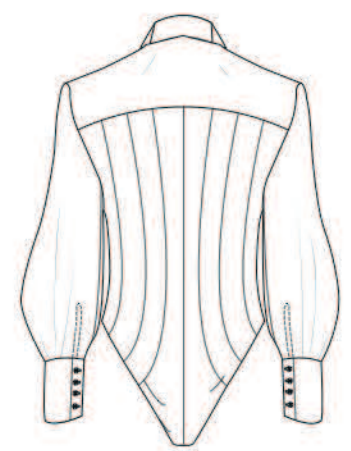
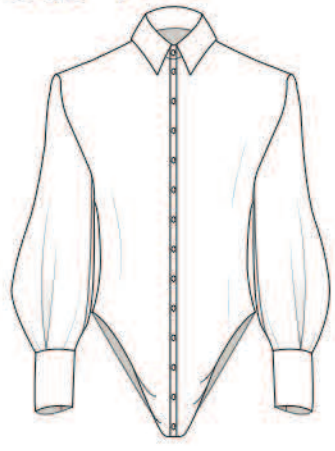
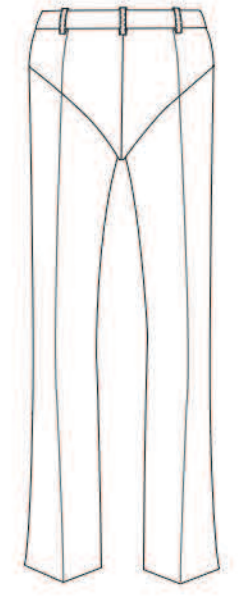
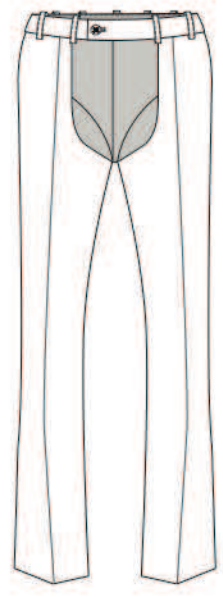


# Look 1



Black wool cod piece  
- jock strap style waist band to be worn  
- 6 panells with soft boning top stitch technique to create shape - as on red coat



White cotton, corset panelled printed shirt with black leather chap trousers and black wool cod piece



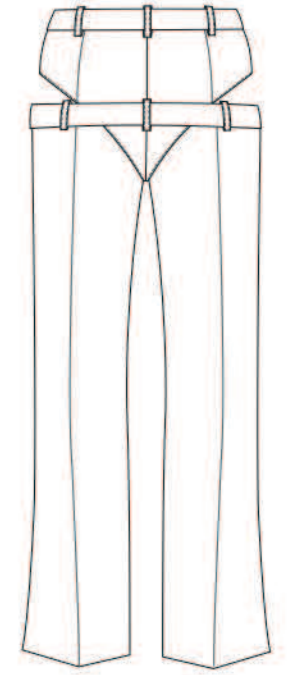
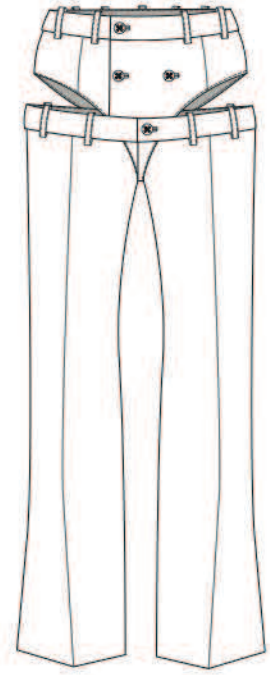
Black leather chap trousers  
- welt pockets at front  
- bluff on back of trouser  
- small 'condom pocket' at centre back seam - invisible zip opening



# Look 4



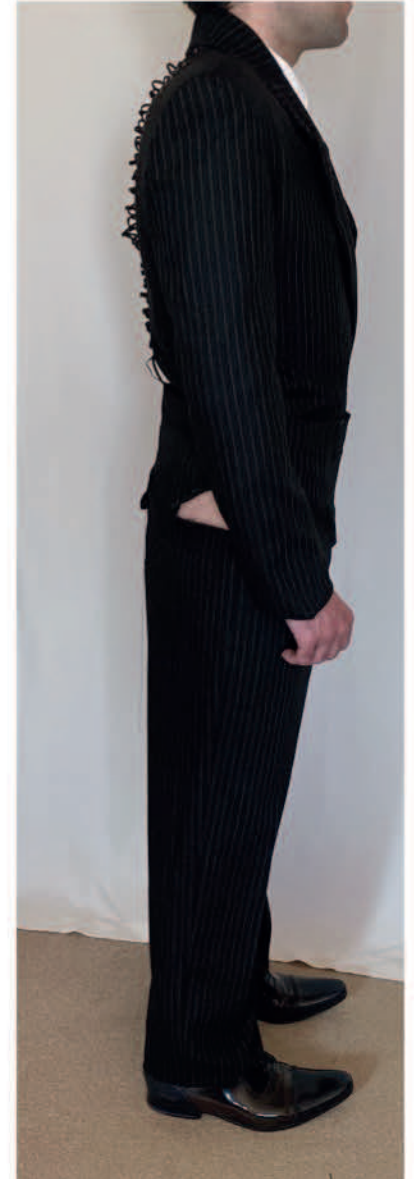
White cotton shirt includes corset style panelling at back with 3mm French seams and 1mm top stitching on right side



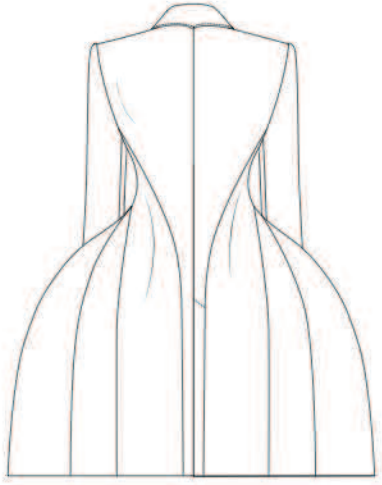
Back of pinstripe suit jacket is laced with waxed cotton cord into silver 5mm eyelets



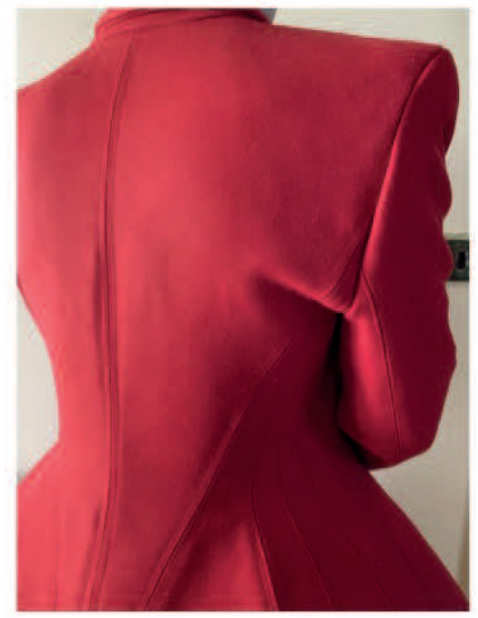
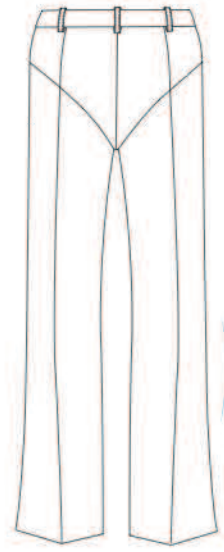
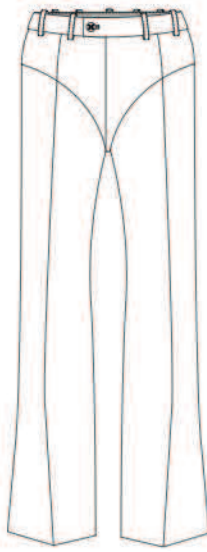
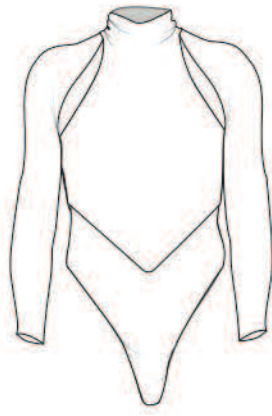
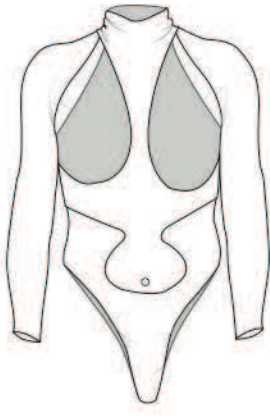
White cotton, corset panelled printed shirt with black pinstripe suit with cut out trousers



# Look 2



Black and white panelled stretch cotton polar neck with red leather trousers and red wool corset panelled coat



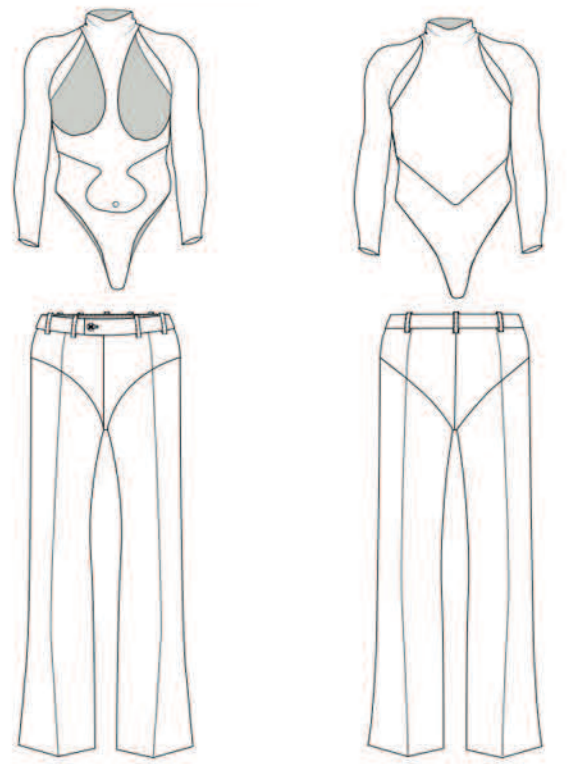
24 panelled coat to create crinoline shape  
each seam is top stitched 4 times to create technique of soft boning to add support and structure  
Sprung steel bones are inserted on 5 seams to create and hold the bell shape  
Further boning around waist ensures close and flattering fit around waist - accentuating figure



# Look 2



Look 2 view without red coat  
- Black and white stretch collar neck top body  
- red leather low rise trousers



Silver metal zips used at fly and 2 front pockets on red leather trousers - zip surrounded by 6mm jet opening  
- back pockets - circle bluff pockets with single welt opening - set inline with seam running down the centre of leg