



TIME IS ELASTIC

Ana Maria Atanaskovic
+447447877428
atanaskovicanamaria@gmail.com
instagram @ana_maria_atanaskovic
London

This collection aims to bring valuable knowledge from tradition into the contemporary mainstream.

Confucius said "Study the past if you would define the future." The starting point of this collection was to find a new approach to sustainability by studying the resourcefulness of our ancestors. How were previous generations able to create such long lasting and powerful things with so much less resources?

While studying historical Serbian garments I came to the conclusion that well-thought-out purposes and multi-functionality was the key. Influenced by historical and cultural references, my collection introduces traditional dress to modern elements. Made up of layers that work together and fabrics carefully chosen to give a refined, feminine look to the unisex silhouette, my designs were adapted to become functional, ready for action and movement.





MOVEMENT



SERBIAN ETHNIC DRESS

Sanja i Nena, Beograd 1980



time is elastic



NATURAL FABRICS

OLD/NEW RELATION

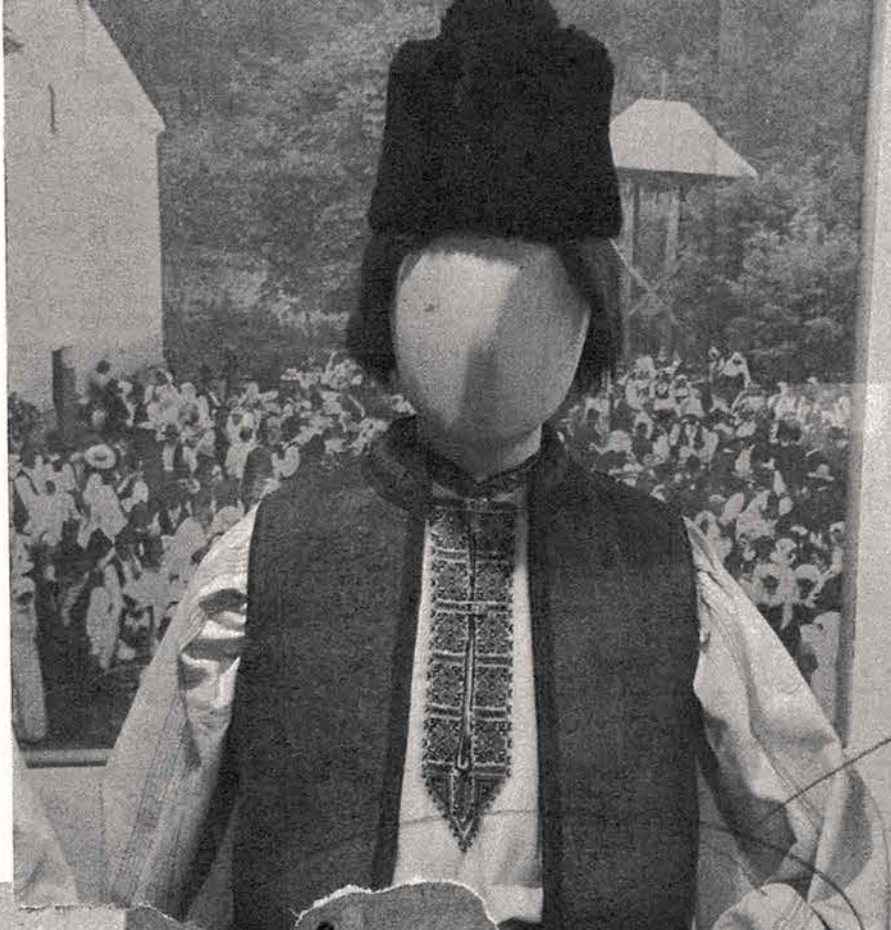
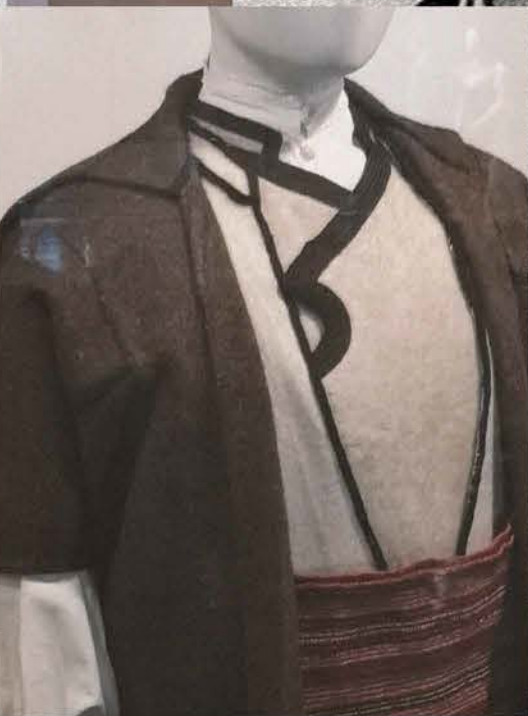
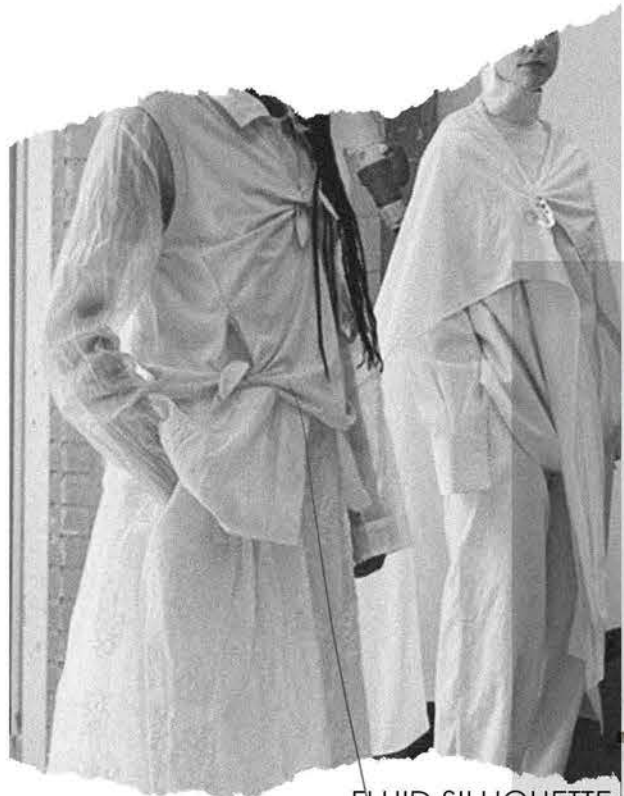
RECONSTRUCTION/
REVITALISATION

LAYERS

FLUID SILHOUETTE

time is elastic

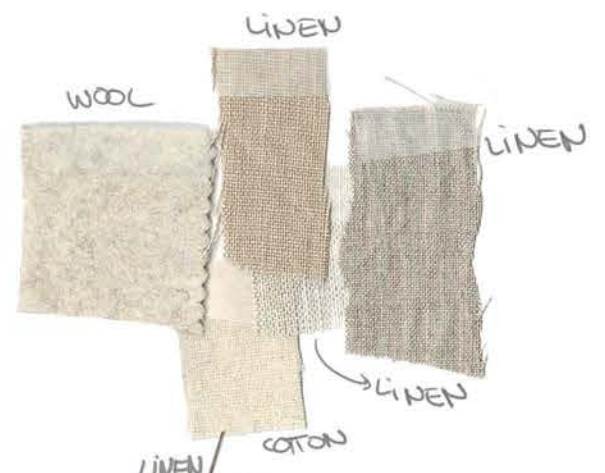
COSTUMES DE VIEILLE SERBIE



A. VAUDOR.
Paris



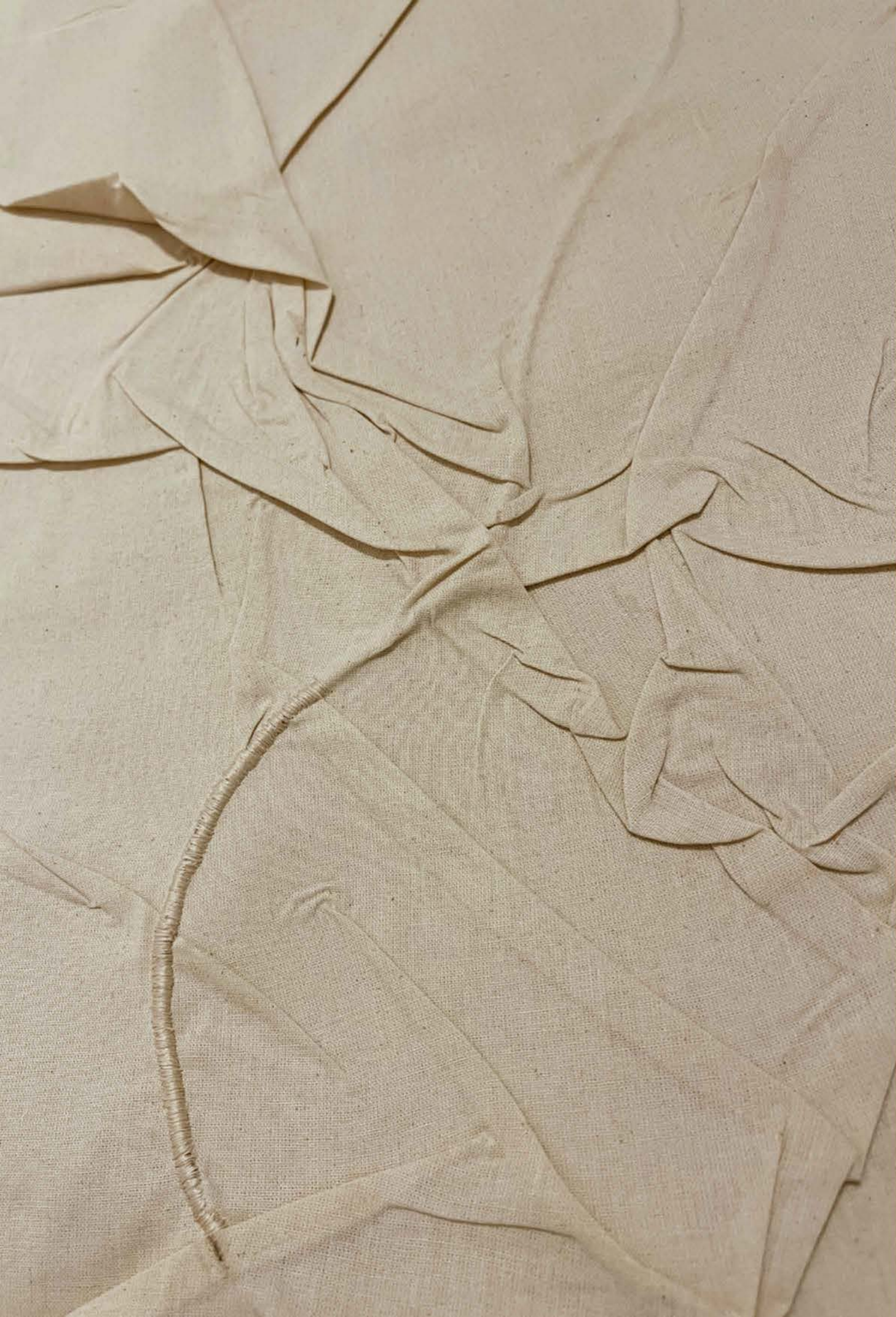
ORGANIC FABRICS



NATURAL COLOURS



time is elastic



SURFACE MANIPULATION

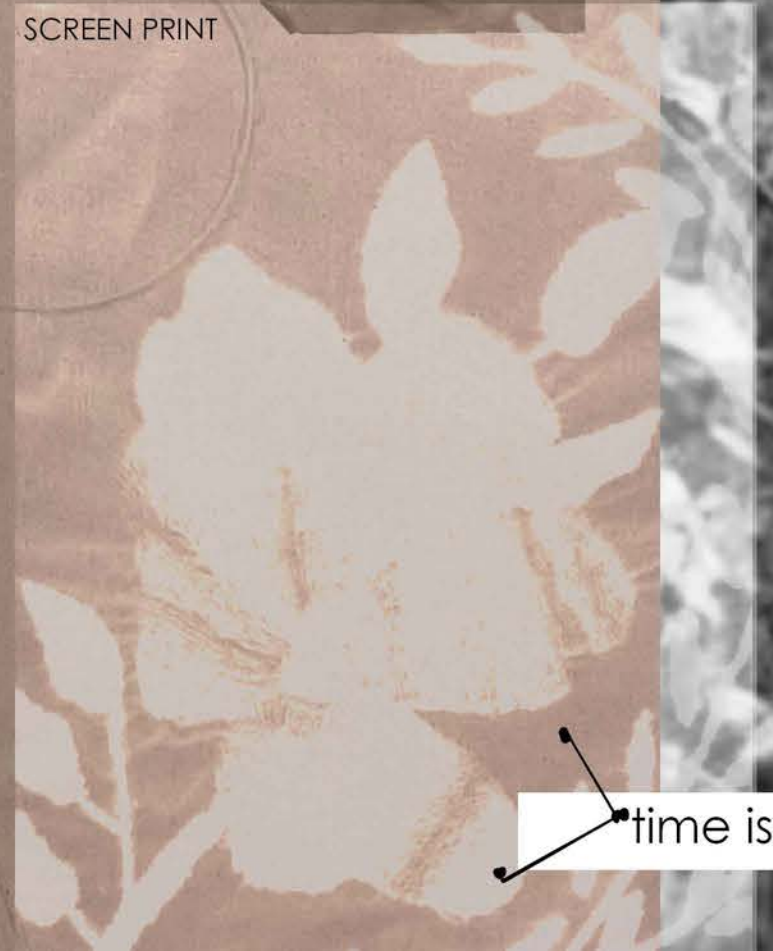
time is elastic

FLAX IMPRINT



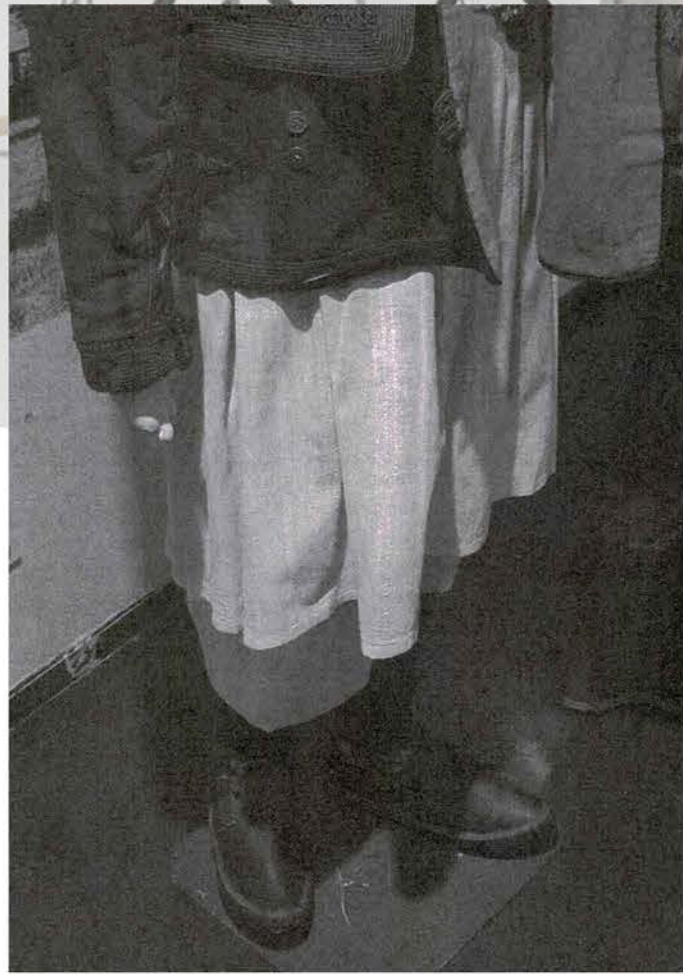
FLORALS

SCREEN PRINT



time is elastic

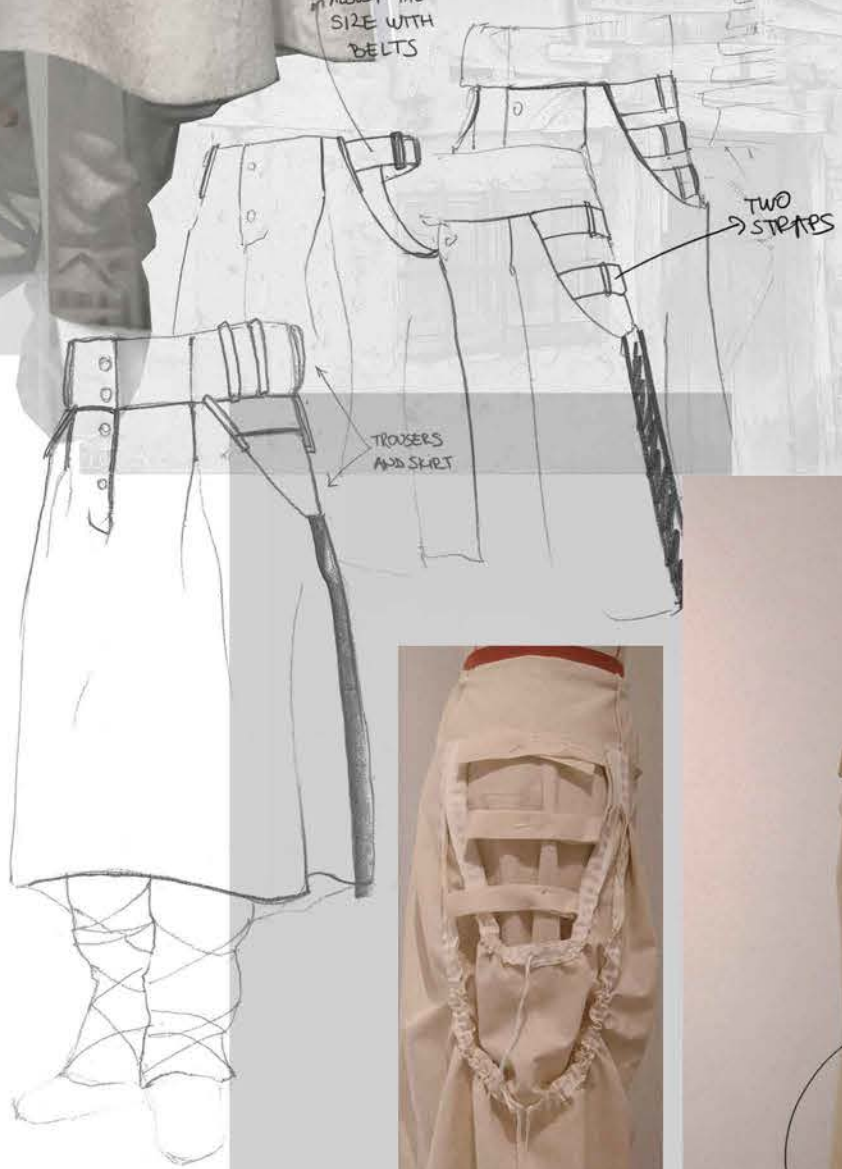




ADJUST THE SIZE WITH BELTS

TWO STRAPES

TROUSERS AND SHIRT



POCKET

MAKE PANNELS



OPEN ON LOWER SEAM OR MAKE STRAPS



MAKE IT LOW ON HIPS

ADD YOKE

ADD VOLUME

REMOVE CUFFS

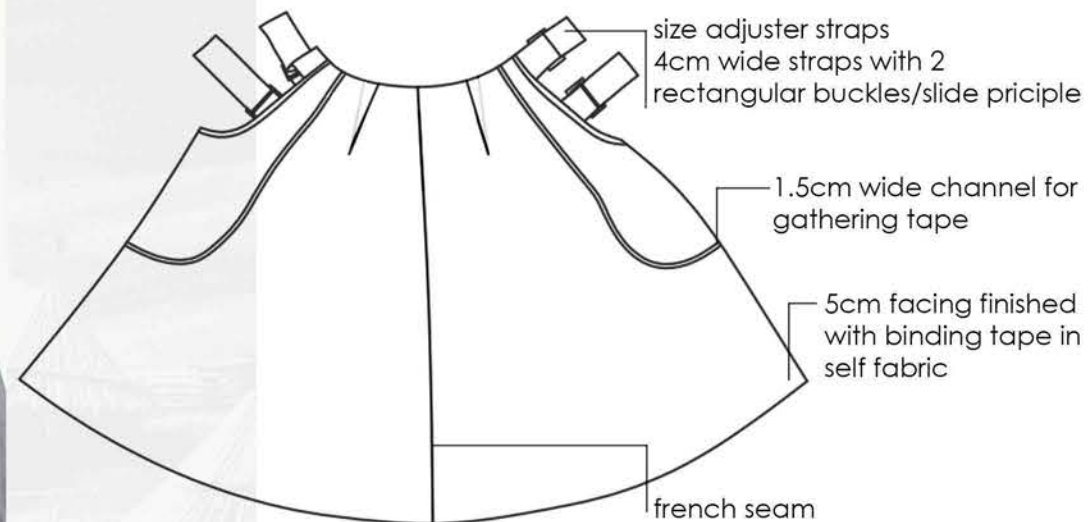


REMOVE VOLUME

time is elastic

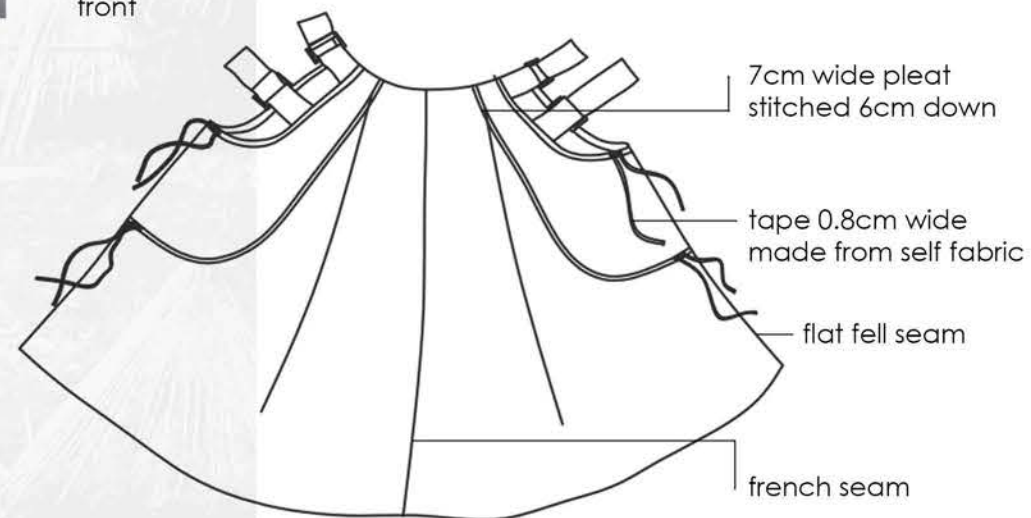


back

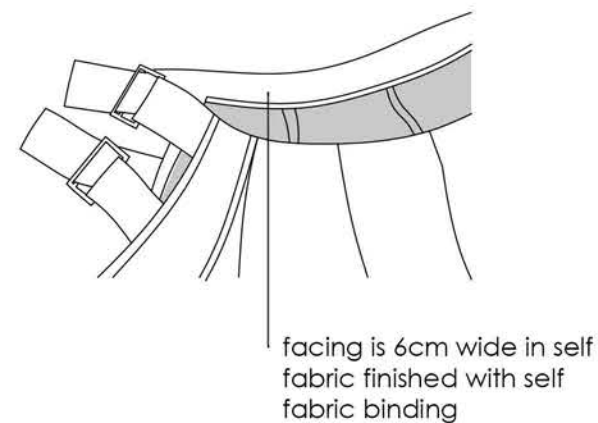
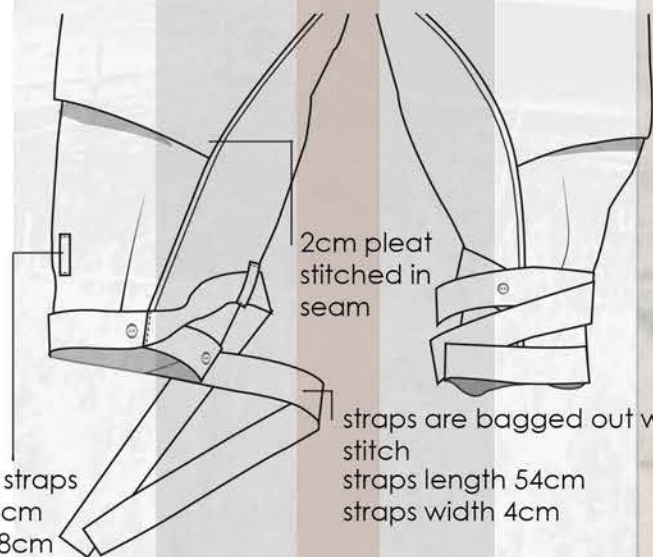
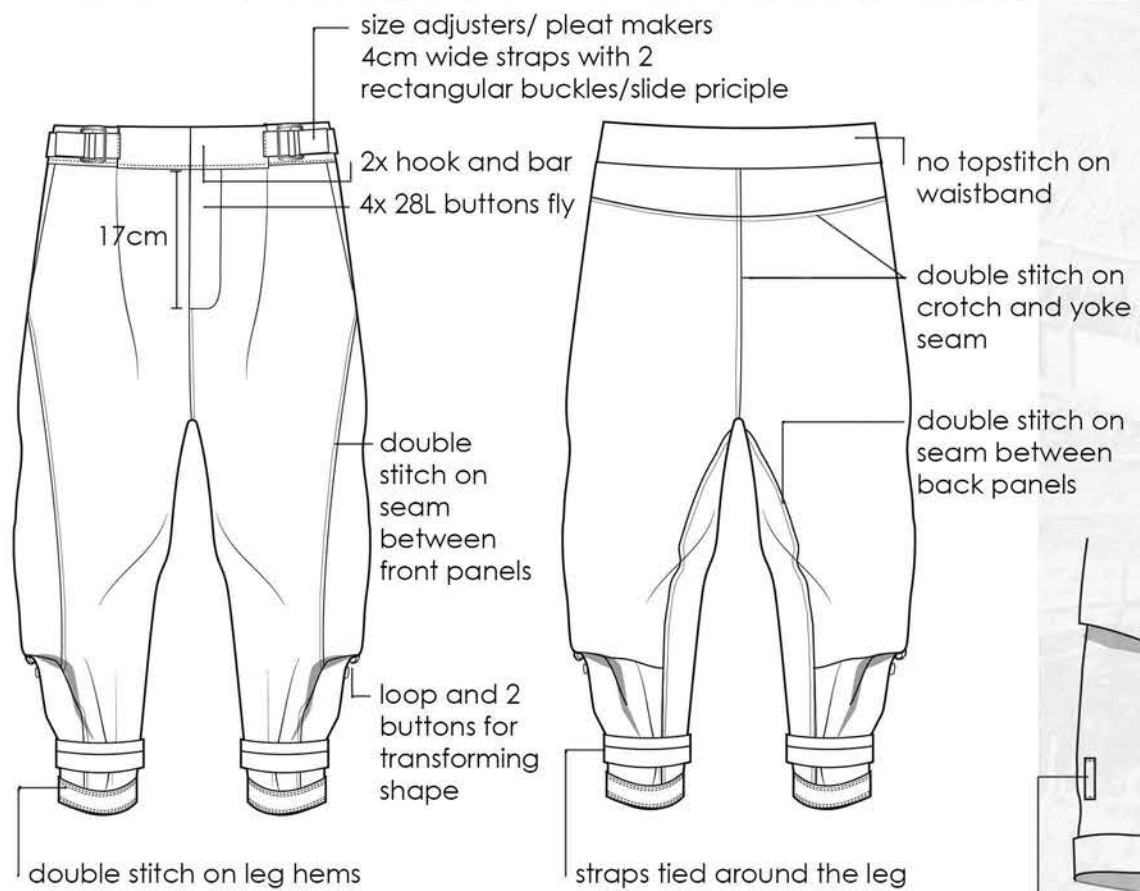


trousers and skirt fabric is charcoal house linen from cloth house, trousers lining is silk habitai from misan, buckles are gunmetal colour

front

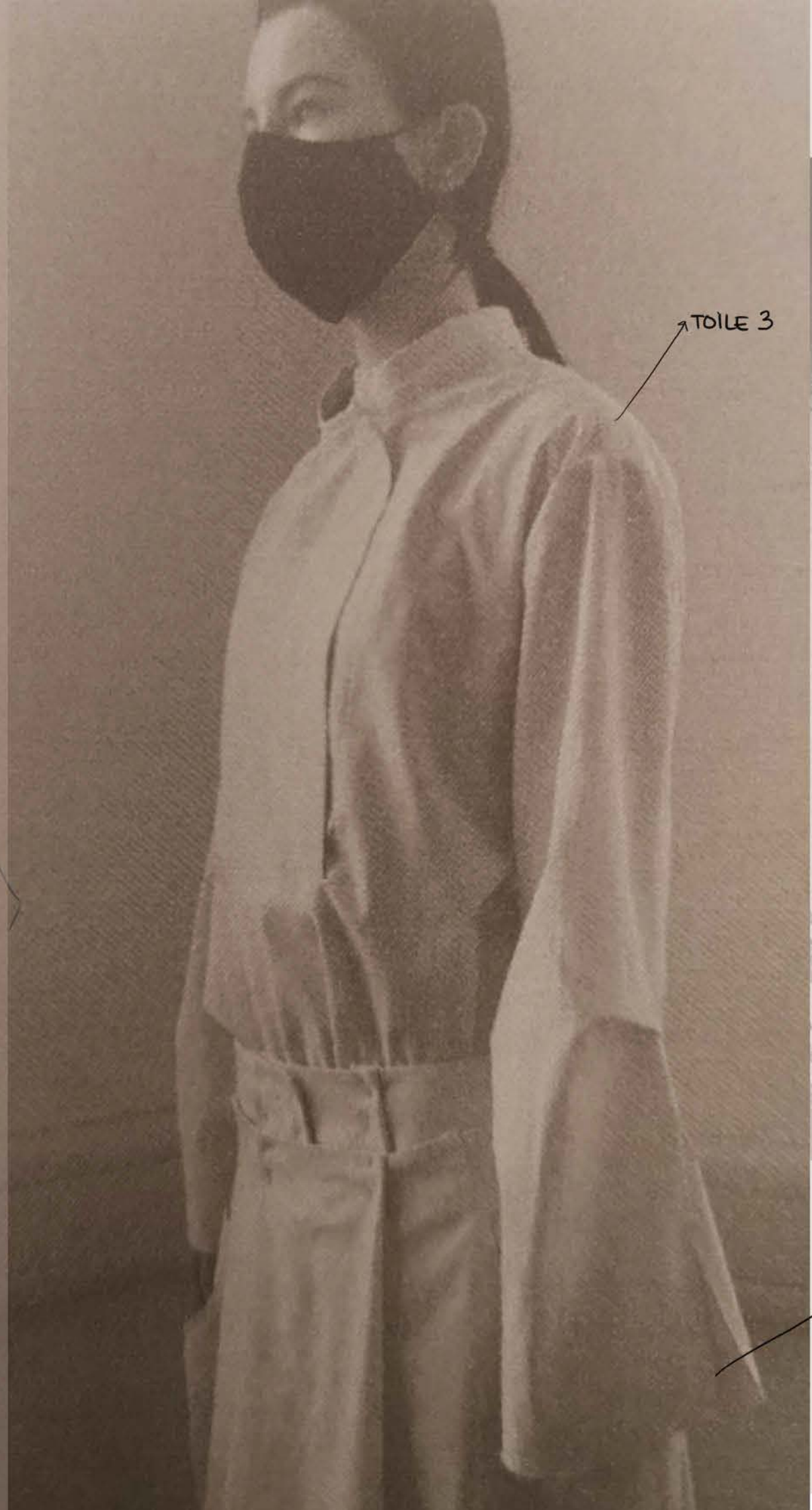


buttons/buttonholes on the end of straps for fastening when tied





time is elastic



TOILE 3



LINEN

LINEN

LINEN

ADD CUFFS



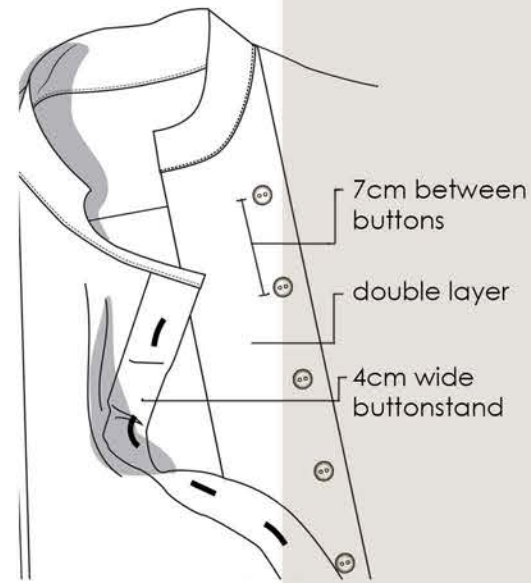
time is elastic



STITCH PLEAT 2 cm



MAKE SLEEVE WIDER IN UPPER PART ONLY



4cm wide box pleat in center back with loop on top

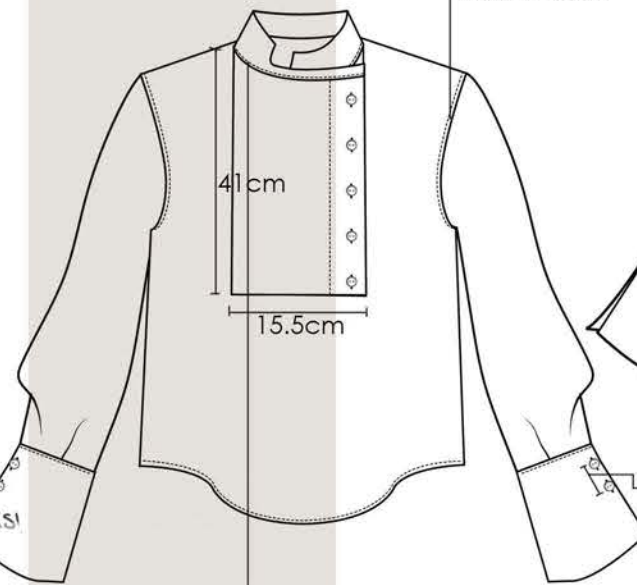
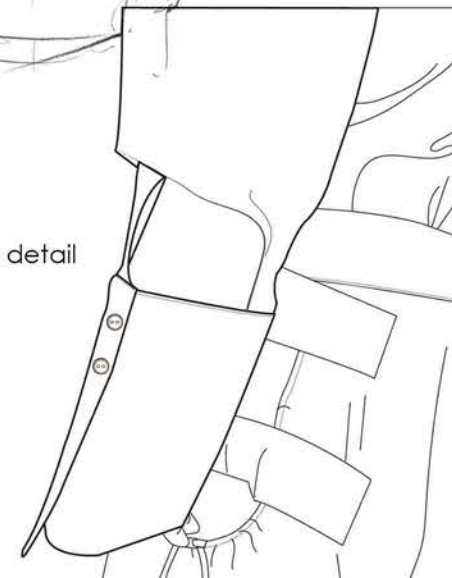


TOO MUCH WITH PLEATS!

MAKE IT BIGGER (MENSWEAR FIT)

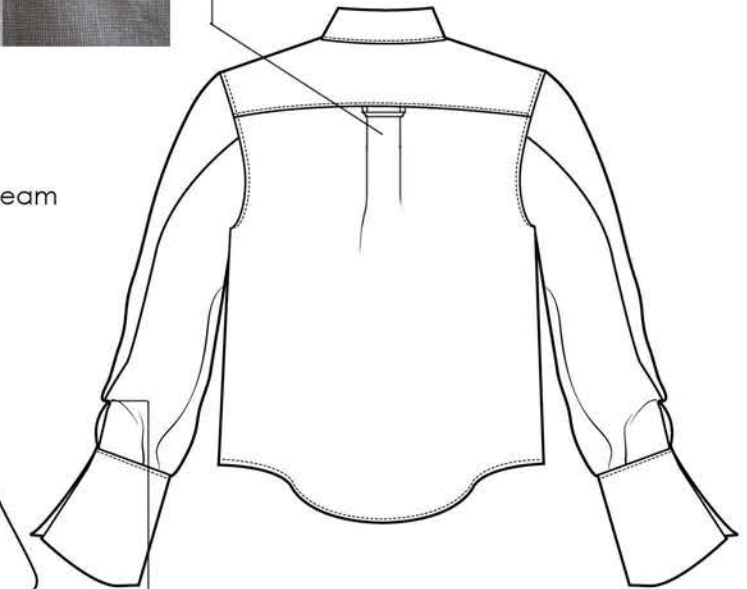


sleeve detail



french seam

topstitch only on lower collar seam



2cm stitched pleat

3cm between buttons

shirt fabric is Essex Linen Mix Homespun in silver from Ray Stitch

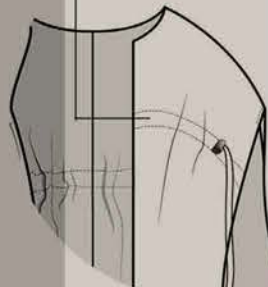
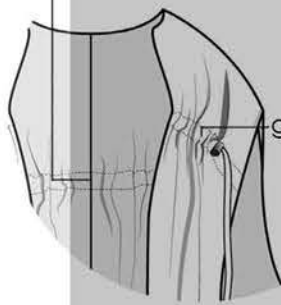


time is elastic

secure tape in CB

2cm channel

gathered



bagged out linen and wool without top stitch

WOOL

LINEN

sleeves attached just in shoulder (8cm)

linen tape 1.2cm wide finished

eyelet opening for channel

buttonhole for fastening the sleeves when in back

7.5cm

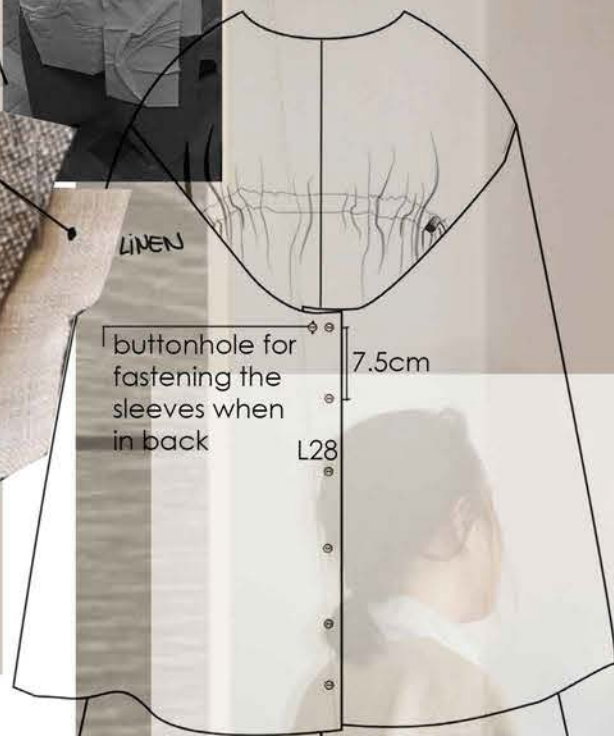
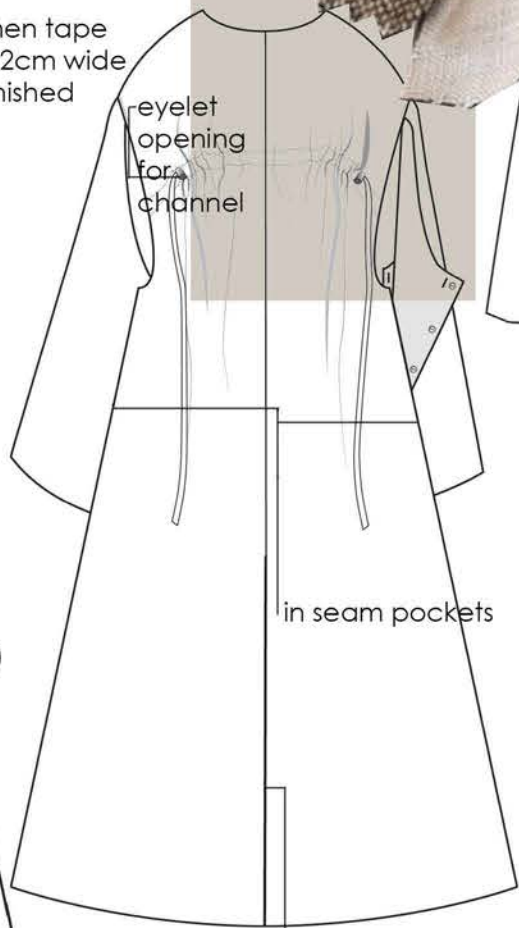
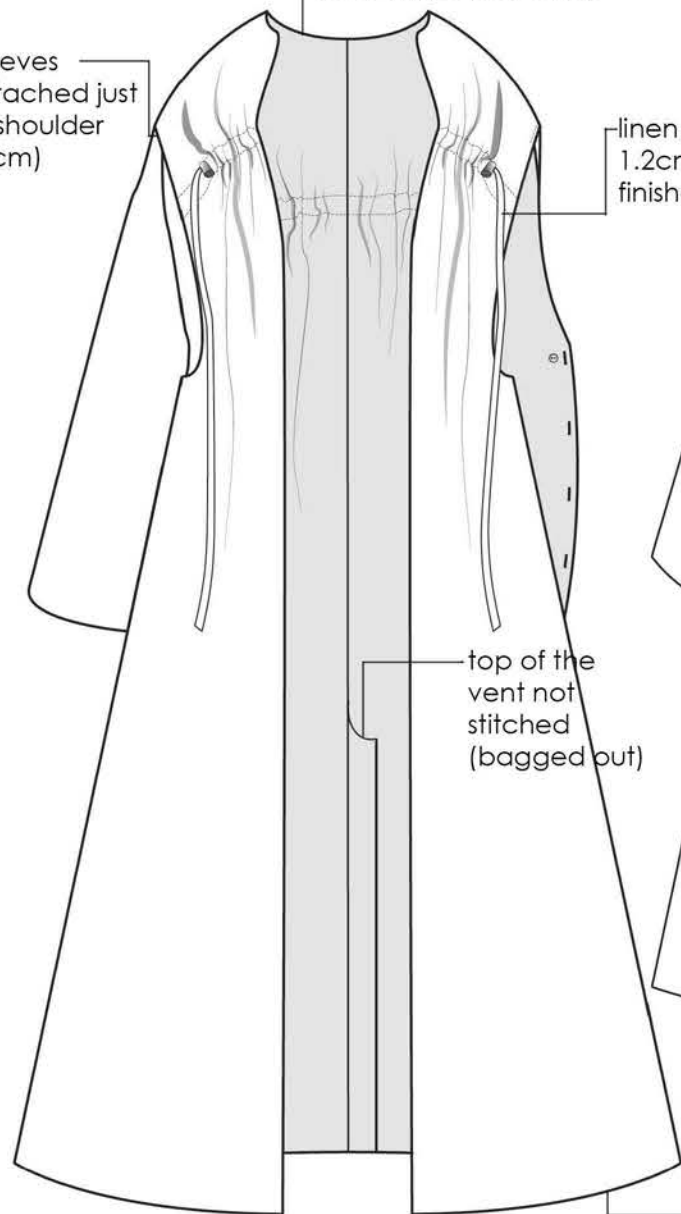
L28

top of the vent not stitched (bagged out)

in seam pockets

vent

hem hand stitched (bagged out)





time is elastic



POSITION THE BUTTONS SO THAT SHOULDER DROPS NICELY



shorten collar



make sleeve a bit wider



ADD BUTTONS L21

panel in black fabric

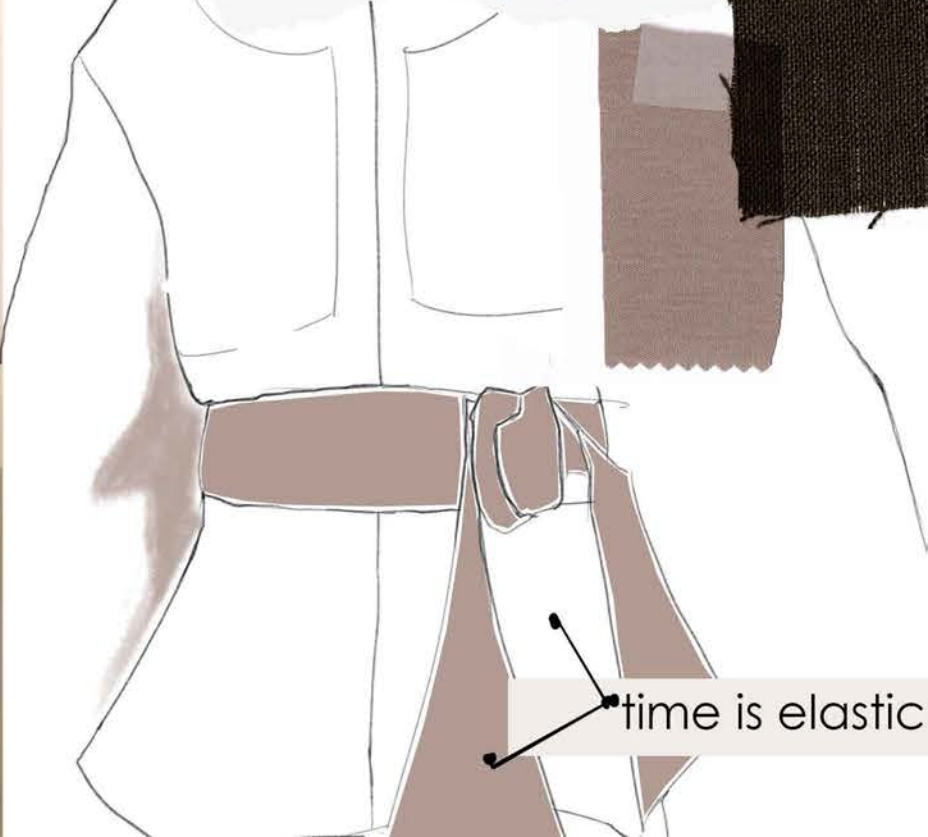
MAKE IT LONGER



VENT



time is elastic

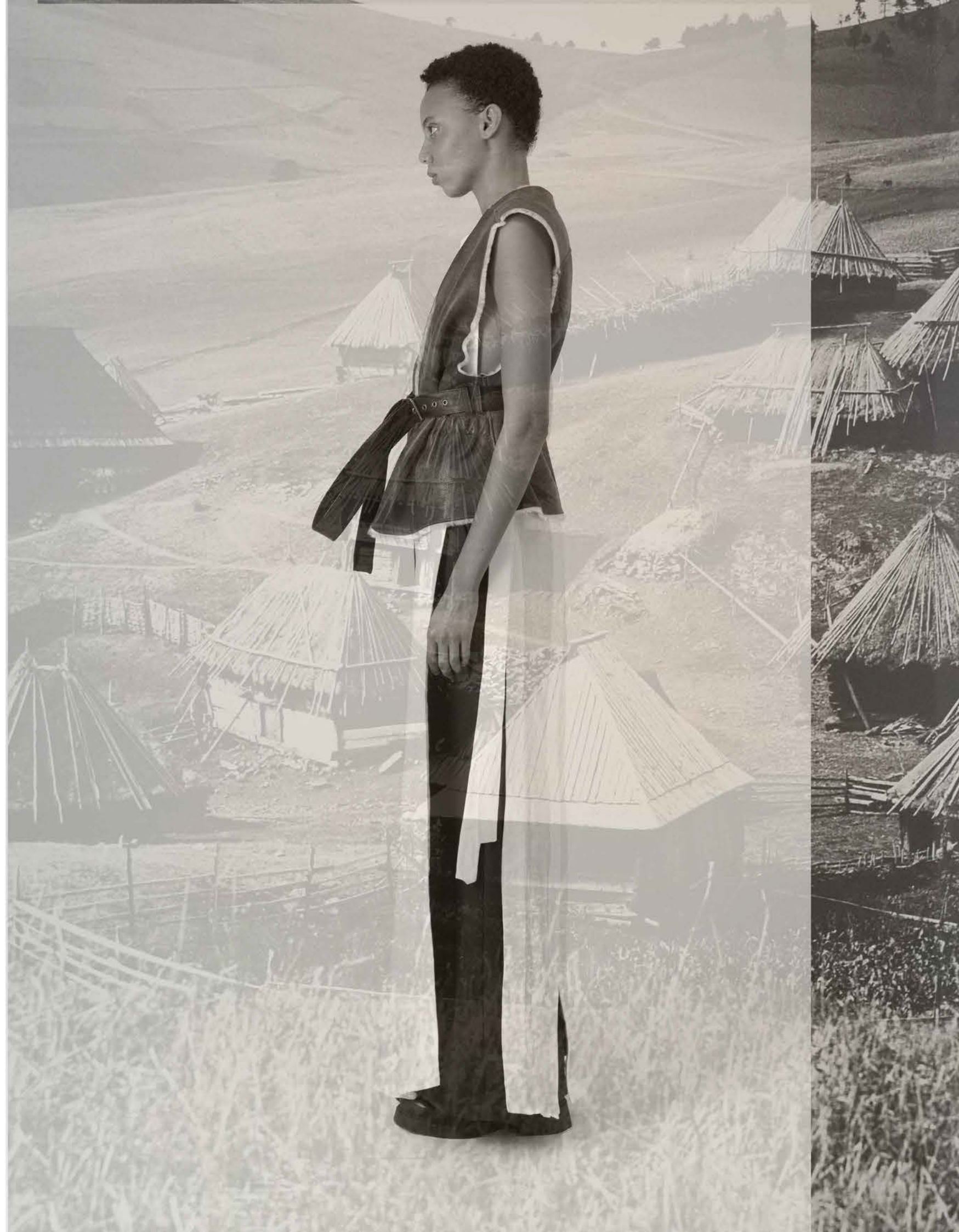


time is elastic



LOOK2

time is elastic

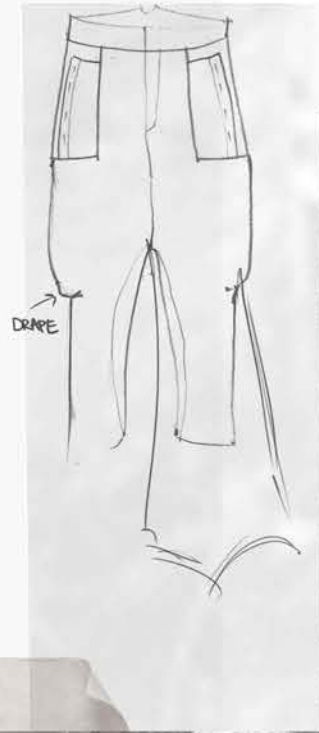




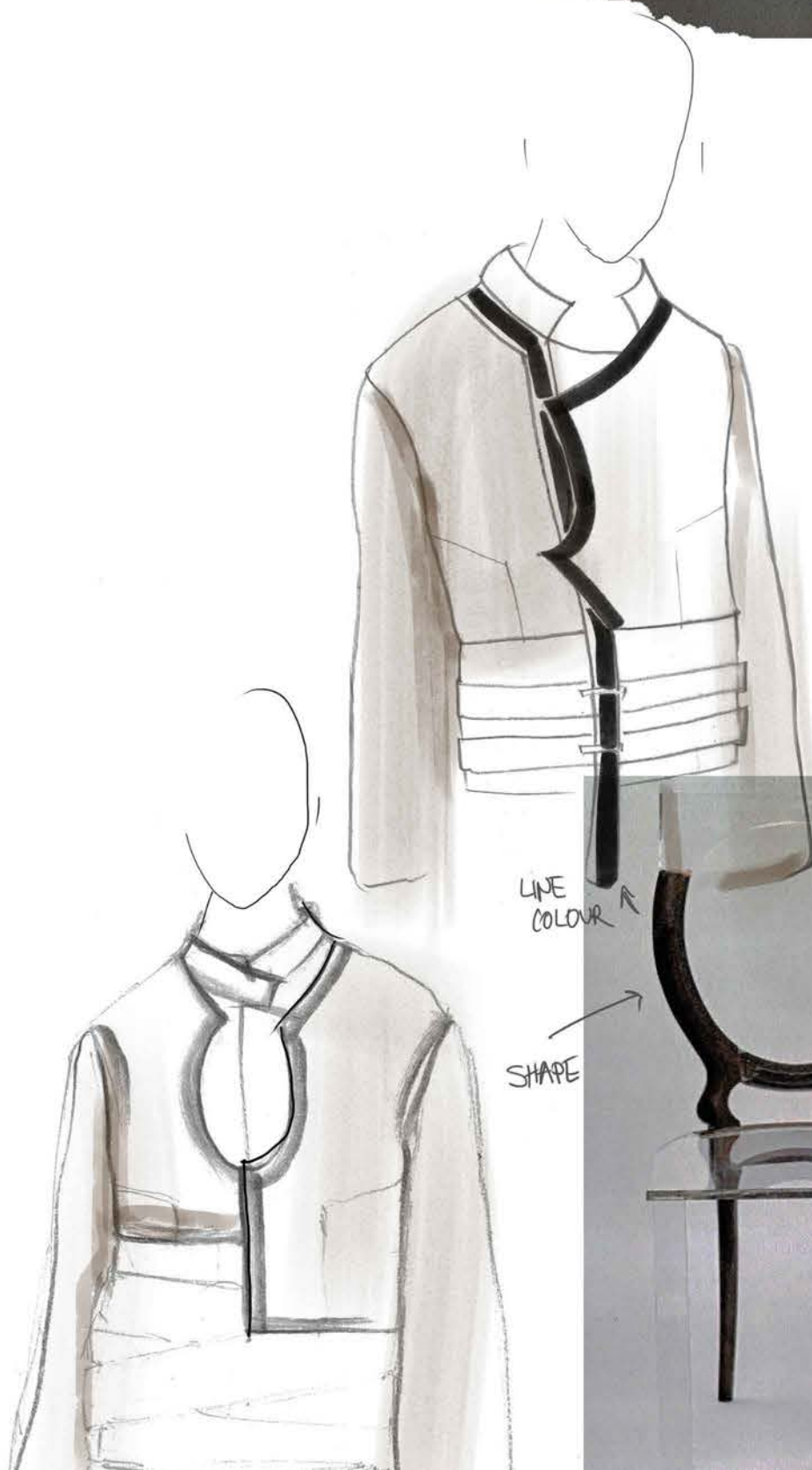
HEM SHAPE



DIFFERENT FABRIC

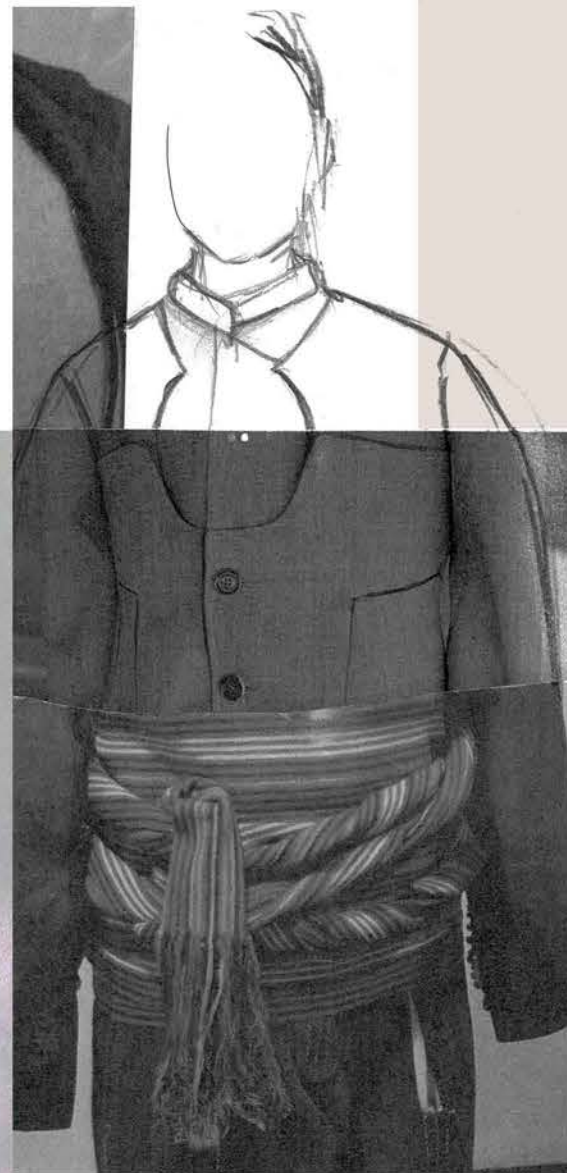


DRAPE



LINE COLOUR

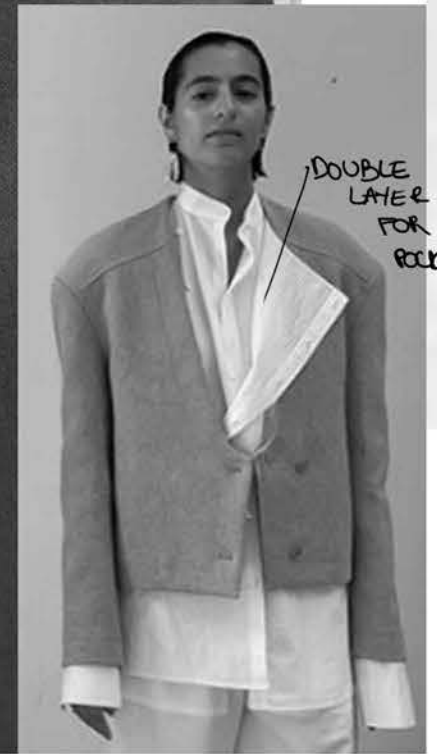
SHAPE



DRAPE ON THE SIDE SEAM



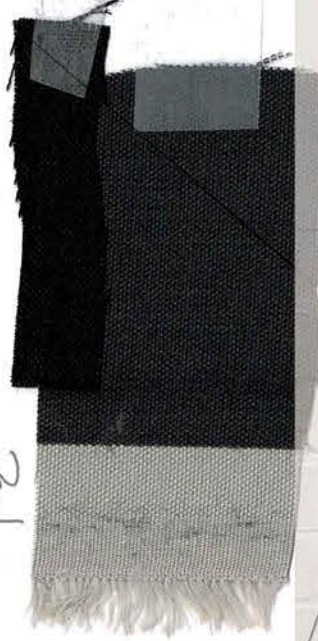
SHAPE FOR POCKET



DOUBLE LAYER FOR POCKET

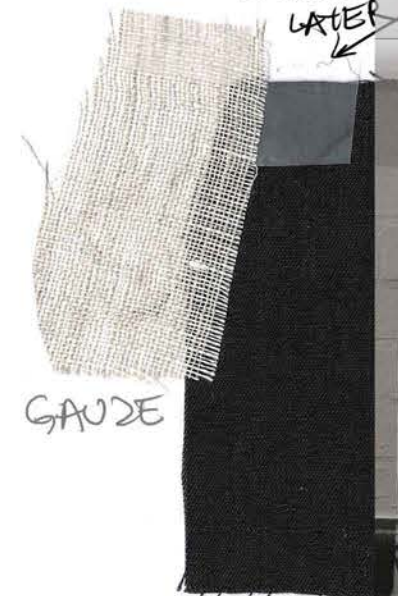


COTTON TWILL



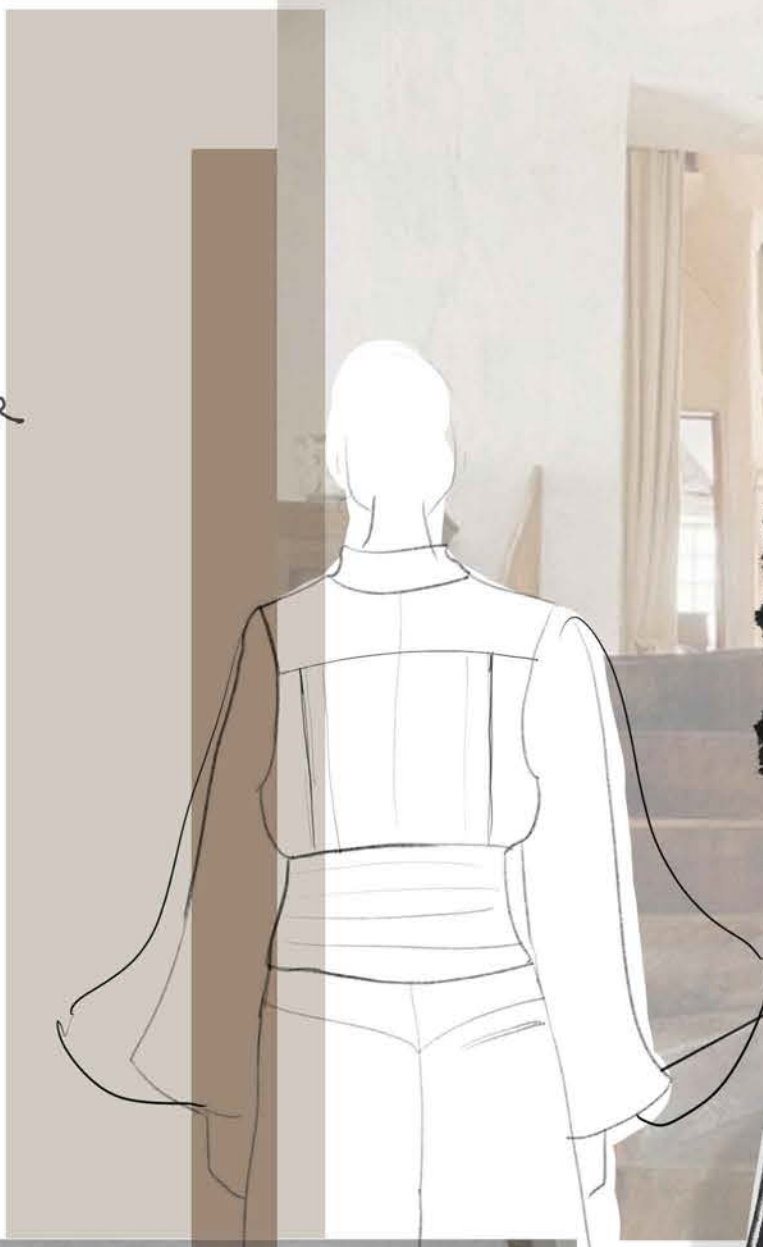
MAYBE LEATHER

DOUBLE LAYER



GAUZE

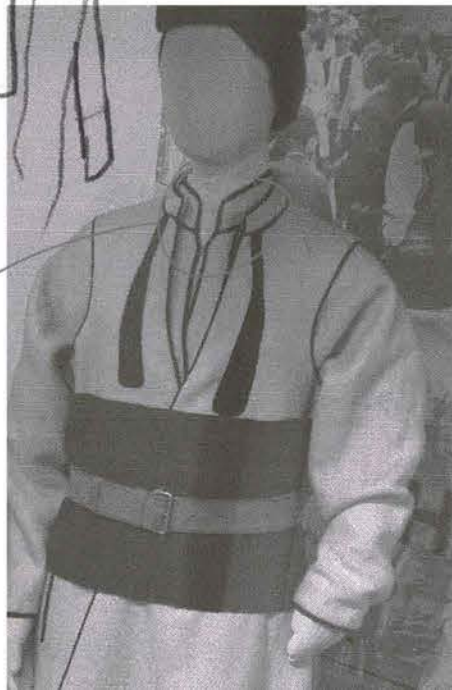
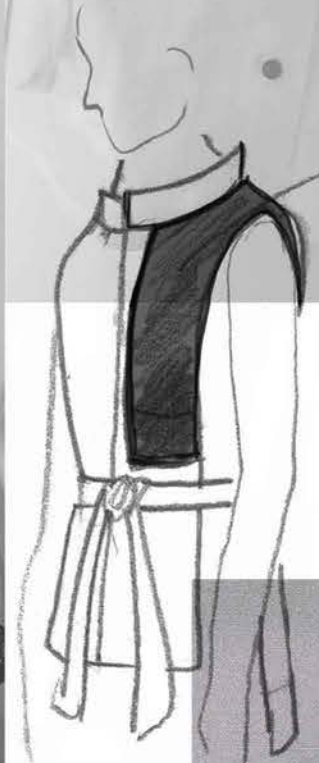
LINEN



PATCH POCKET



time is elastic





time is elastic





SCREEN PRINT

TEXTURE

FLORAL
IMPRINT

time is elastic

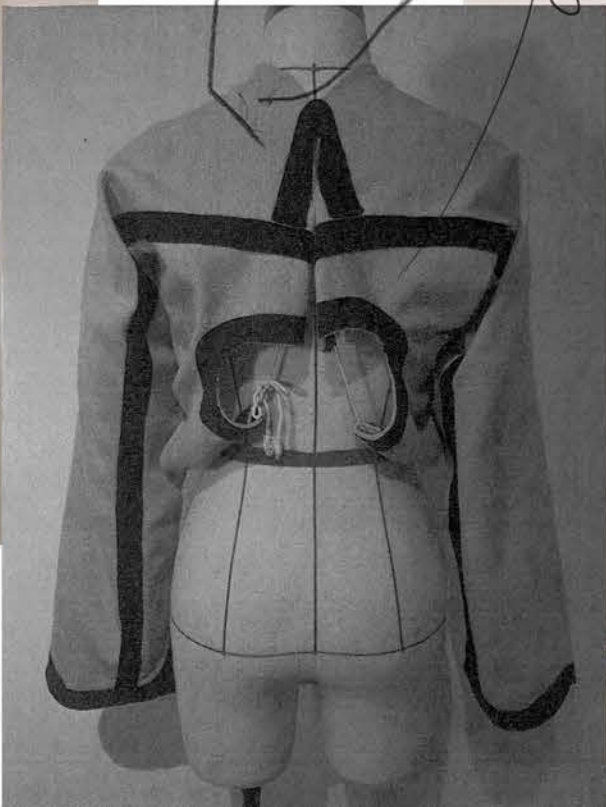




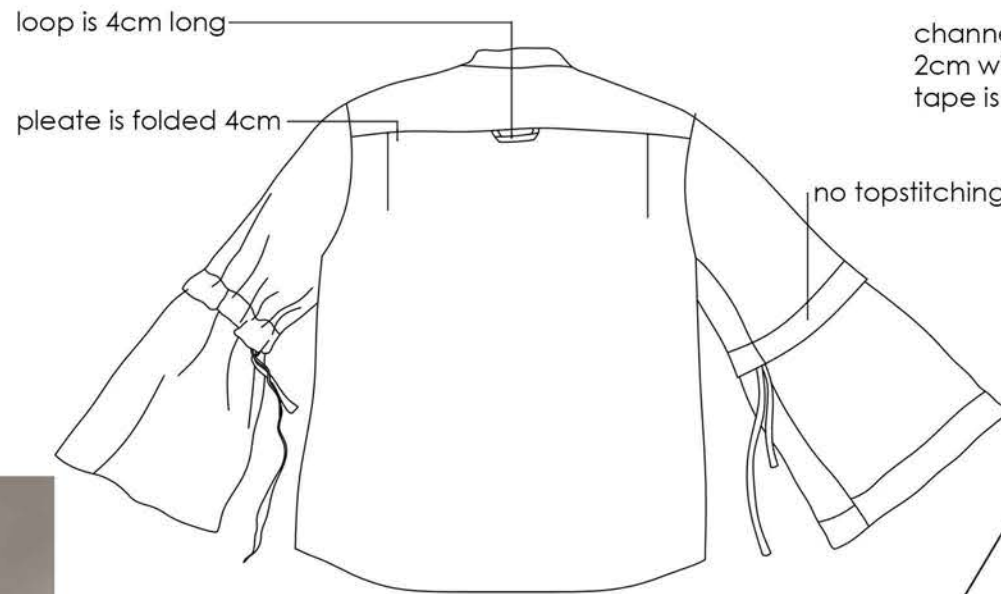
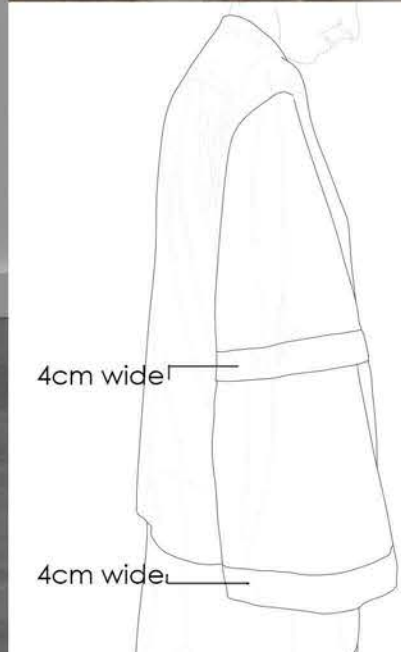
wide sleeves



make a double layer jacket



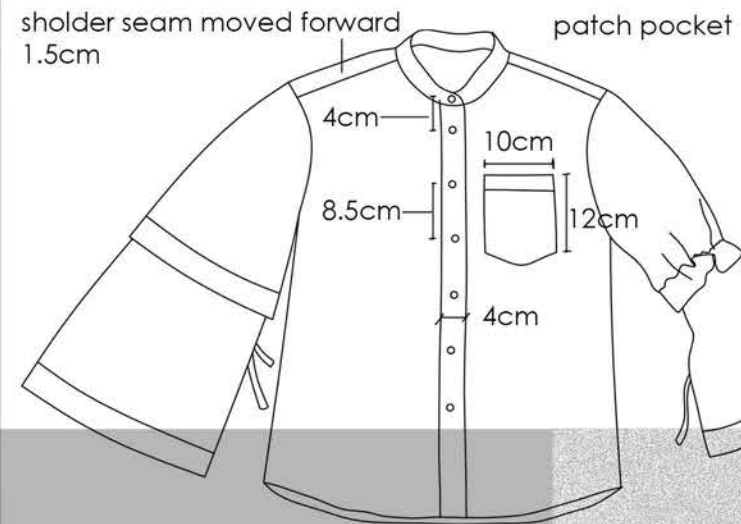
time is elastic



loop is 4cm long

pleate is folded 4cm

no topstitching



sholder seam moved forward 1.5cm

patch pocket

4cm
10cm
8.5cm
12cm
4cm

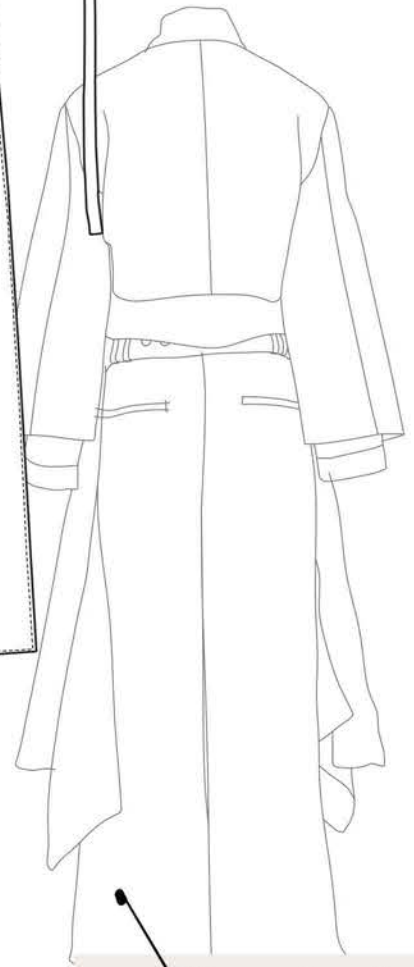
channel for gathering tape 2cm wide
tape is linen 1.2cm wide

bagged out with facing (lining)
facing is 4 cm wide without SA

leather belt with two rectangular buckles/ slide
principal belt is 6cm wide and 150cm long

bagged out with linen

fastenings are magnetic metal snap buttons in gunmetal color on the inside

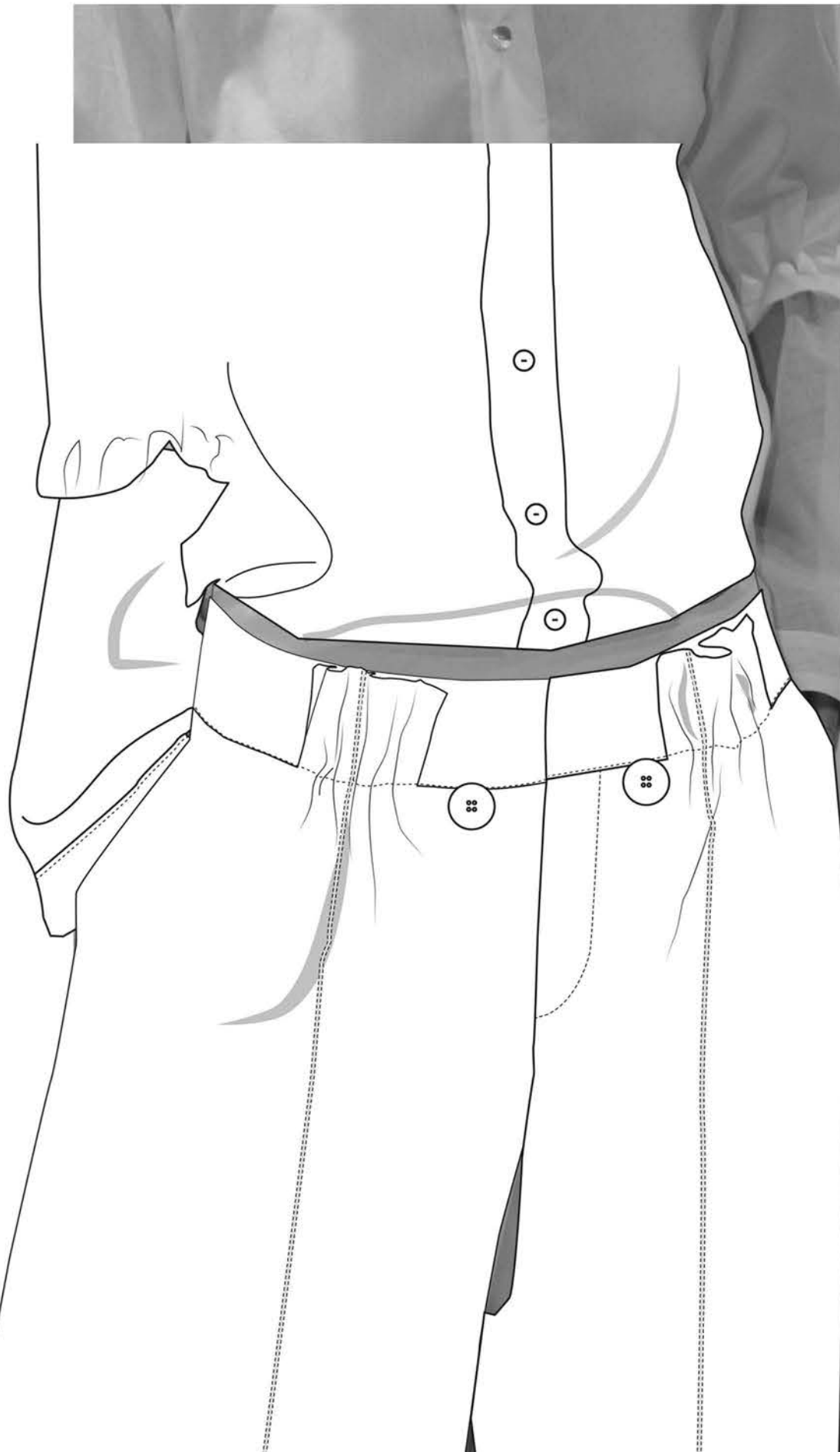


4cm wide

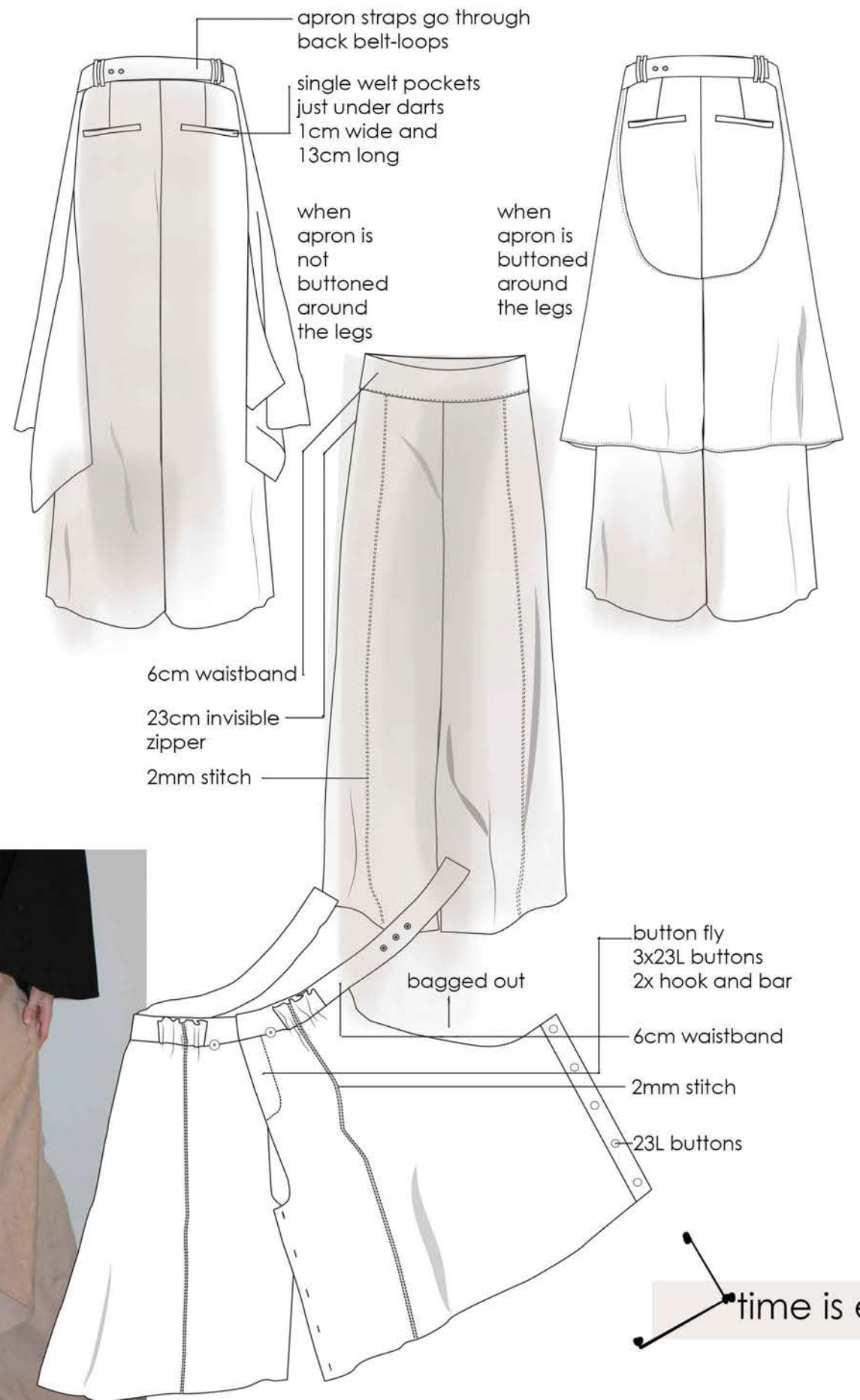
4cm wide

sleeve gathering just under elbow:
channel with tape for gathering is hidden under upper sleeve hem
channel is 1.5cm wide and tape is 0.8cm wide

time is elastic



trousers are made from linen and lining is cotton
 apron is made from two different linens which are bagged out
 rectangle is from leather





time is elastic

FACE 1:
WOOL



FACE 2:
LINEN



BELT:
LEATHER



drapes

TRANSFORM

SEPARATE SCARF
CONNECT TO THE SEAM

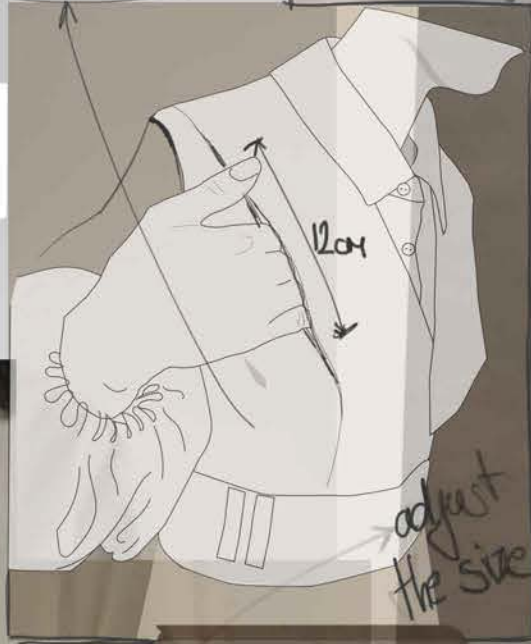


time is elastic

WIDER

reversible vest with detachable lower part

button fastening



sweater



LINEN GAUZE



pocket and dart in seam

time is elastic



whole vest is bagged out without topstitching

pocket under the pleat

on left side and inside there is no pleat, just seam

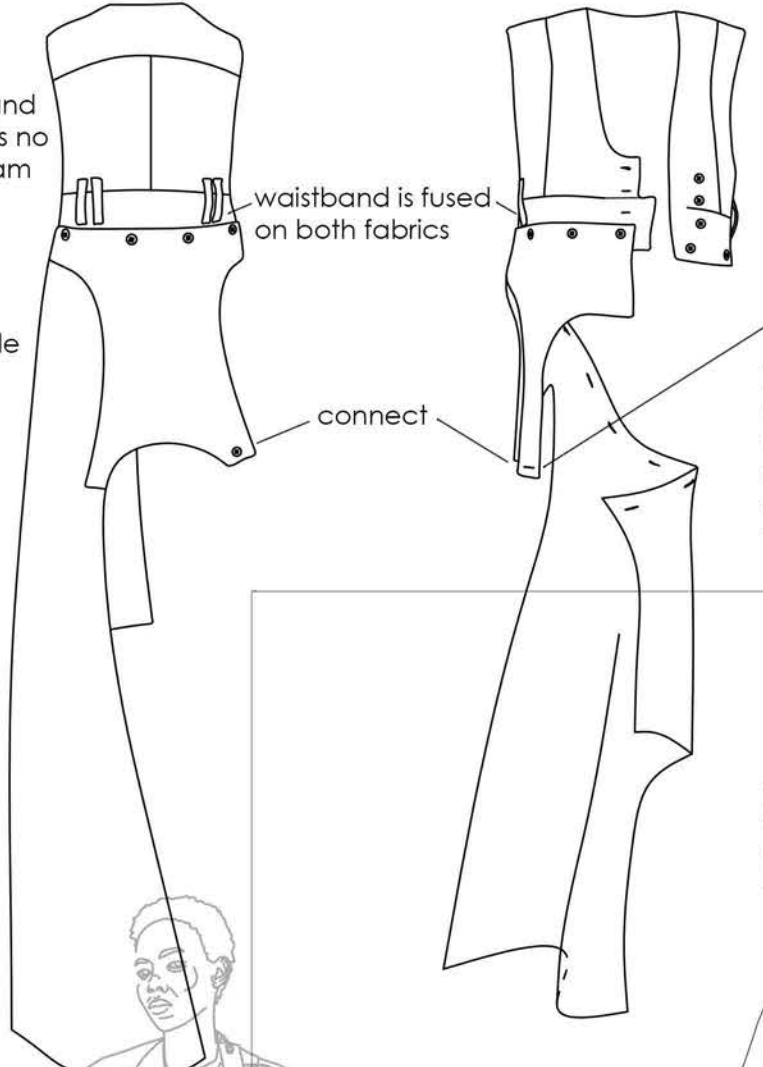
pleate is stitched from bust down

23L buttons

detouchable lower part



upper part of the long vest can be worn on its own as a little tailored vest on both faces

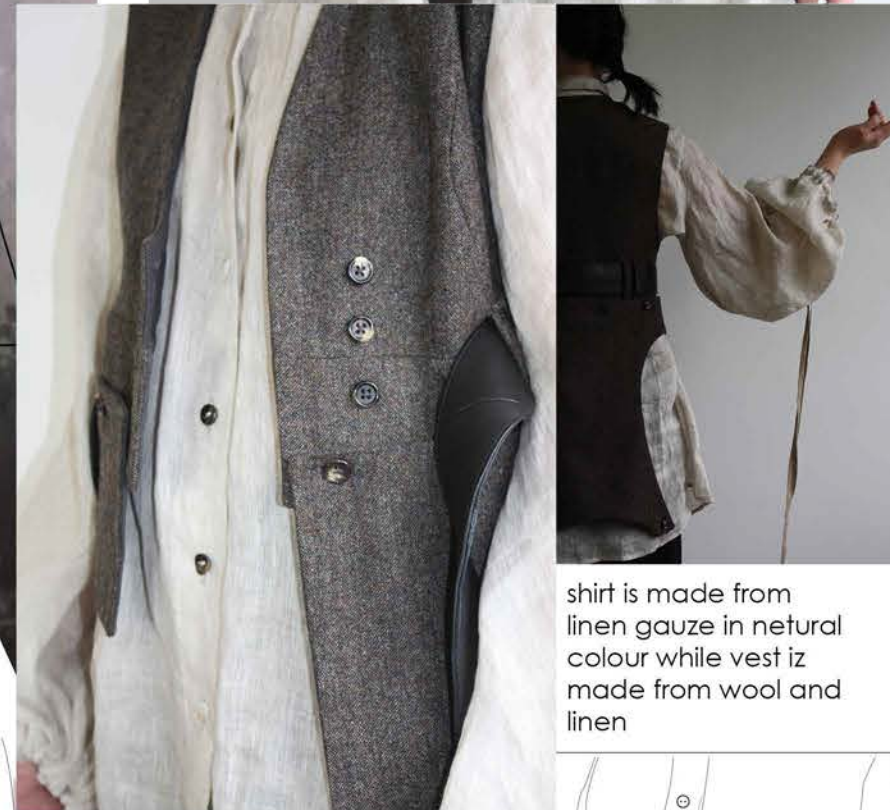


waistband is fused on both fabrics

lower part can be worn as a scarf-vest on both faces

connect

collar is topstitched only on the seam with bodice



shirt is made from linen gauze in natural colour while vest iz made from wool and linen

distance between centers of the buttons is 8.5 cm, first button is 4cm from collar seam

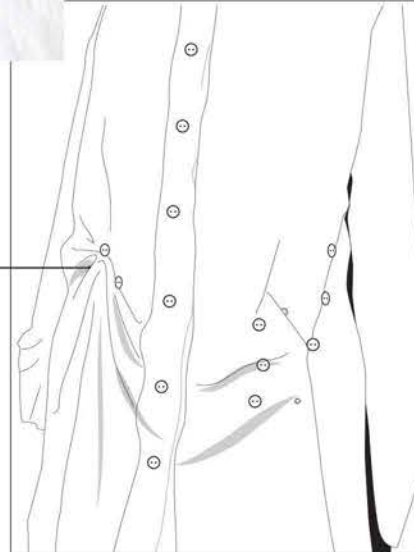
placket is 4cm wide

distance between buttons is 4cm

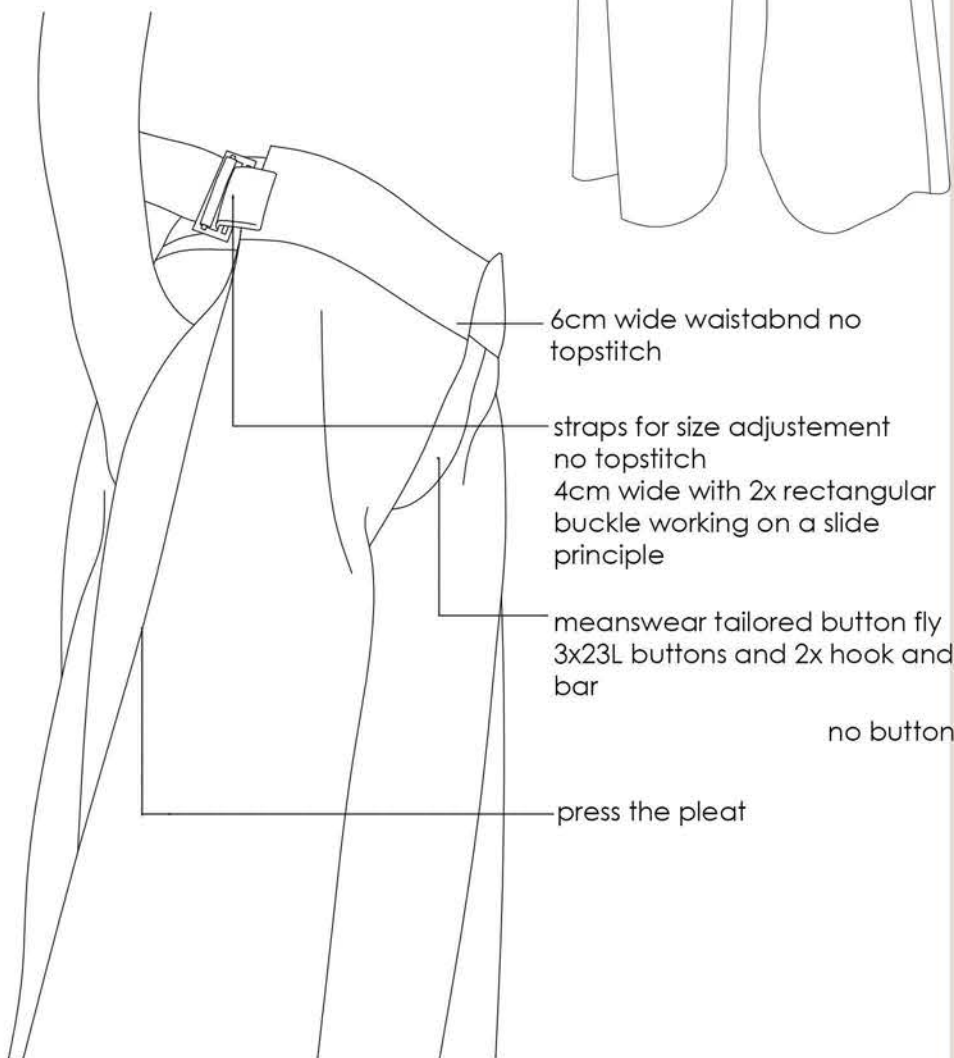
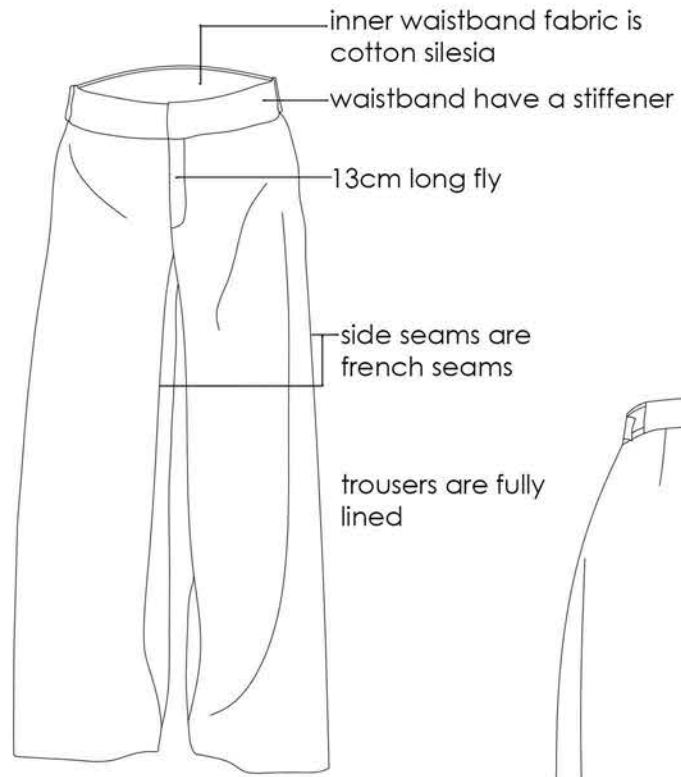


transform the shape by fastening buttons in different ways

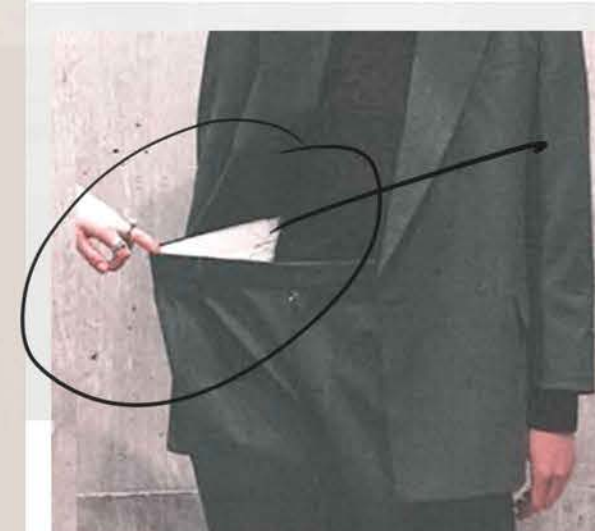
gathering channel 1.5cm wide
gathering linen tape 0.8cm wide



FLY DETAIL

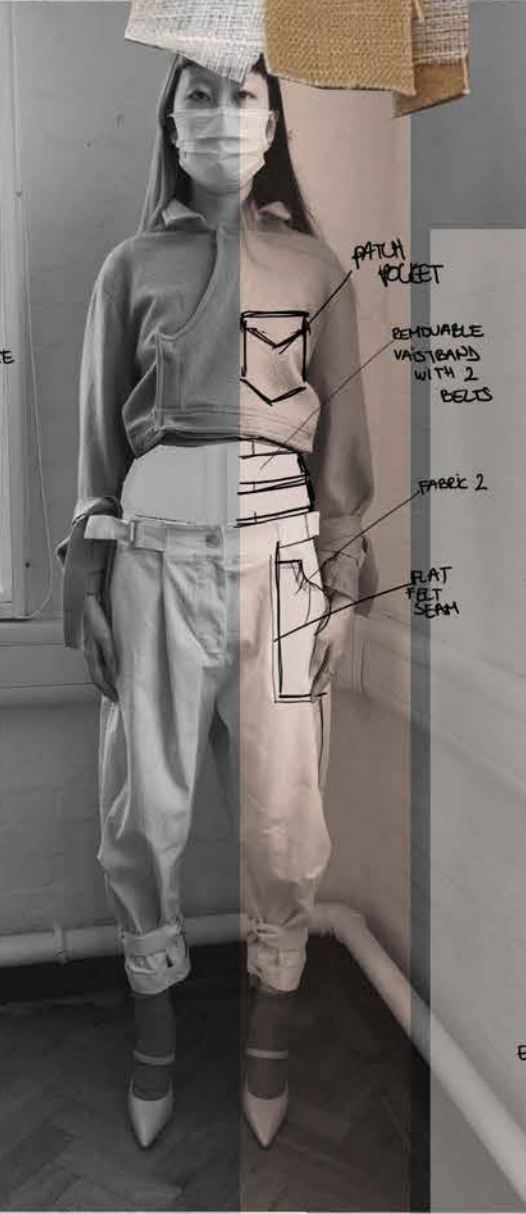
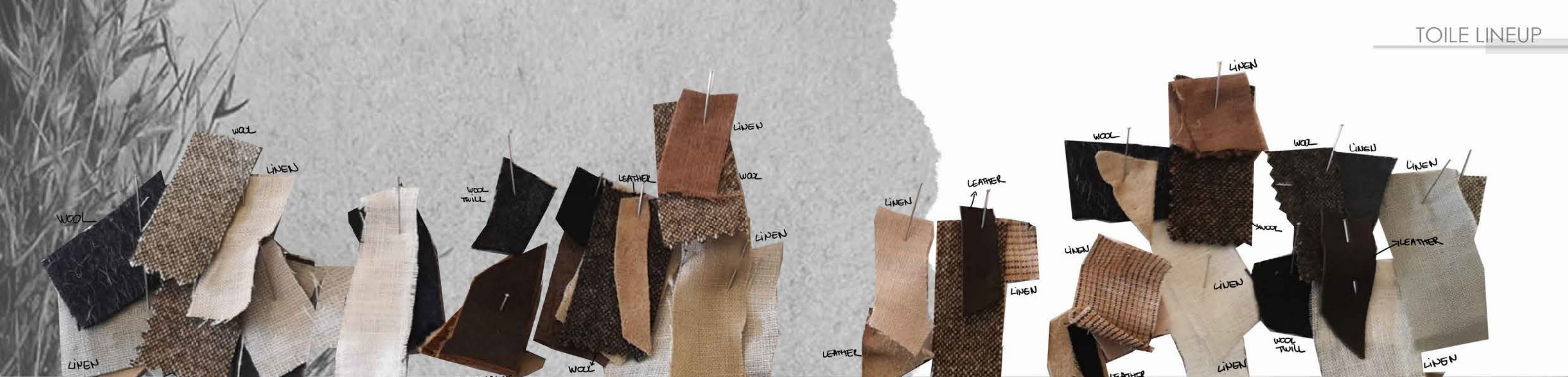


TAILORED BUTTON FLY



wide waistband regulated with buckle straps

time is elastic





DETAILS

