

# BONNIE & CLAUDIA

BY  
HOLLY ROSE

MY PROJECT IS LOOSLY BASED OFF THE STORY OF BONNIE AND CLYDE.  
FOLLOWING THE NARRATIVE OF A WOMEN ON THE RUN LIVING OUT OF A  
SUITCASE, COMBINING ELEMENTS OF 1800'S UNDERGARMENTS AND  
1930'S MENSWEAR TAILORING LAYERED TO GIVE AN EFFORTLESS FEEL.  
THE CORE OF THIS STEMED FROM THE OVERALL CONCEPT OF ESCAPISM  
THAT MANY OF US CRAVED DURING THE LOCKDOWNS.

KI737791@KINGSTON.AC.UK  
ROSEHOLLY25@GMAIL.COM

07541883472  
LONDON

[HTTPS://WWW.INSTAGRAM.COM/HOLLYROSE\\_FASHION/](https://www.instagram.com/hollyrose_fashion/)

KINGSTON UNIVERSITY



BONNIE & CLAUDIA







100% Cotton

Silk Chignon

crepe backed silk

silk Charmuse

stiff pleating

Ponte Roma Jersey

Cotton flim blend

silk sensation

Gabardine

wool

100% wool



BONNIE & CLAUDIA



deconstruction  
Contemporary Masculinity and femininity



higher draping to complement shape

is up higher



scratch finishes into texture mail



layers of sheer building up



1800's bra

Asymetric corset skirt lace on one side only?



draping blazer Asymetric to Complement shape/hairst



Asst. Photo of Vision 1 and 2



Texture paste layered on Vintage lace

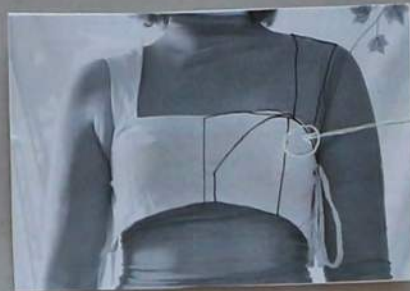


see show midway up to give more structure



BONNIE & CLAUDIA





First take of Bra inspired by 1800's corset



Take how Extreme the Shape is, the galaxy of layers

INSPIRED BY THE SHAPE AND VOLOUME FROM THIS 1800'S SHIRT, SIMILAR TO MY SOURCE PIECE.



Amber to small pills shirt



BONNIE & CLAUDIA





DRAPING INSPIRED BY BONNIE'S WRAP COAT AND CLYDES BLAZER



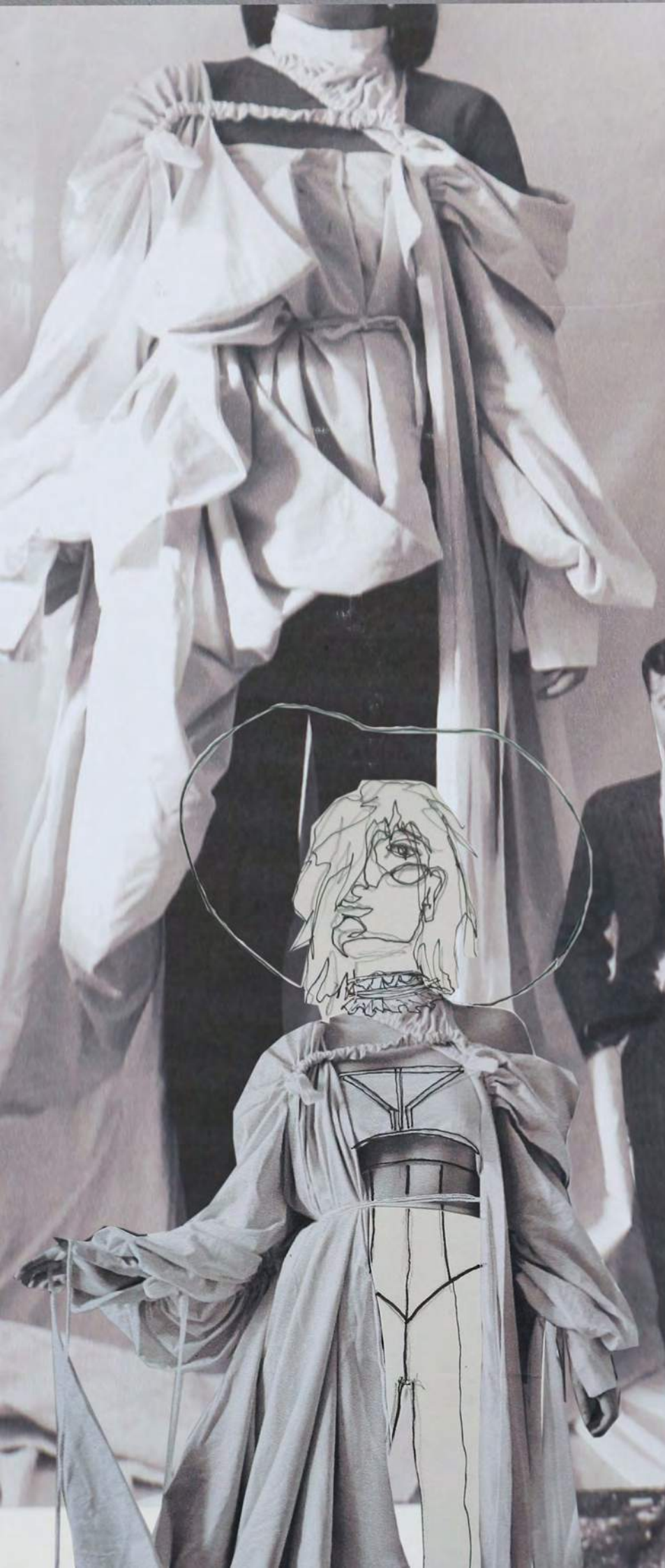
→ Fashion front: drape  
→ Hitch ropes to secure  
coars. to drape volume  
More drape  
less ledge



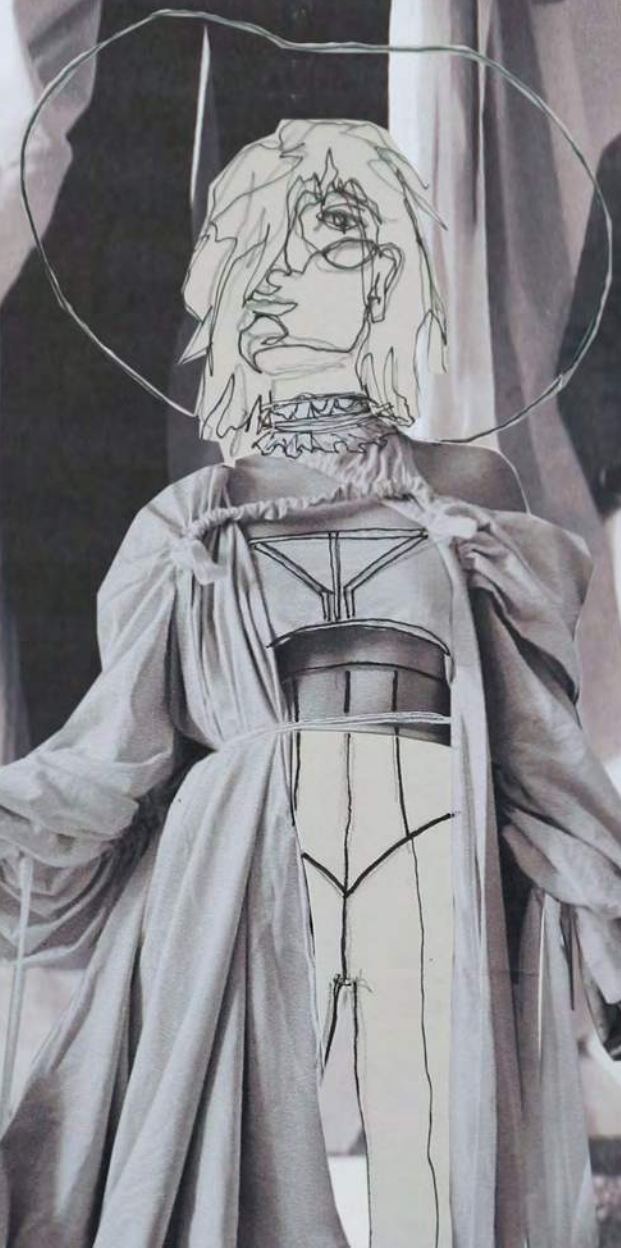
BONNIE & CLAUDIA



1930's EDWARDIAN BLOUSE WAS MY SOURCE PIECE



INSPIRED BY THE VOLUME IN THE NIGHTGOWNS AND THE WAY THEY ARE PULLING UP THE HEM TO REVEAL STOCKINGS.



Elaborate  
Plackets / m  
Large than hem

BONNIE & CLAUDIA





to have 2 hrs to combine papers for separate



Pricy. Inlay any crumpled silk



The fabric to match other pieces



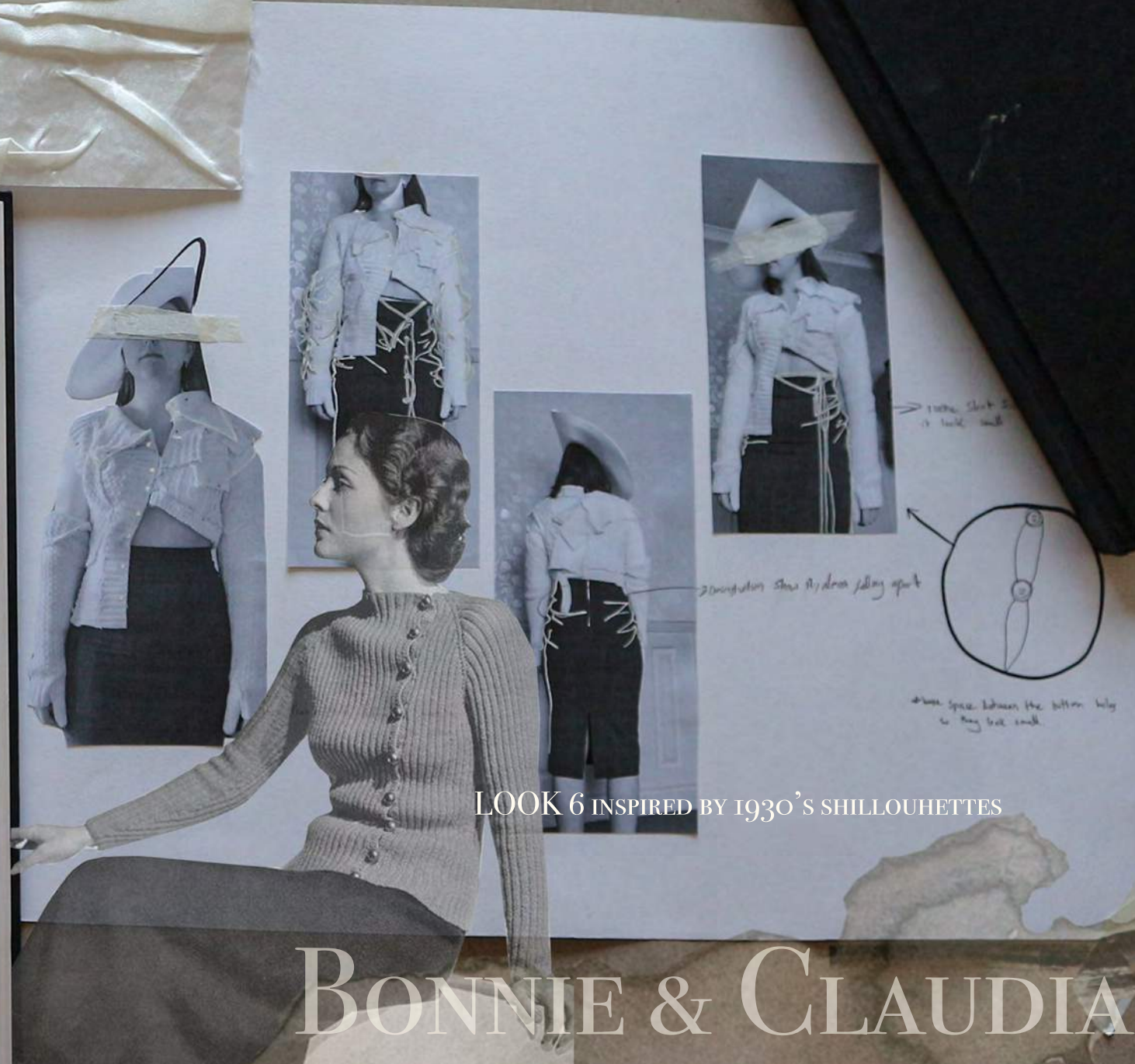
similar buttoning creates plot



to have 2 hrs to combine papers for separate

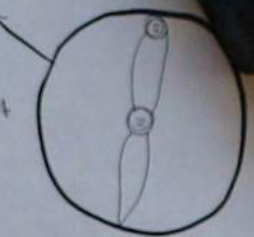


to have 2 hrs to combine papers for separate



to have 2 hrs to combine papers for separate

to have 2 hrs to combine papers for separate



to have 2 hrs to combine papers for separate

LOOK 6 INSPIRED BY 1930'S SHILLOUHETTES

BONNIE & CLAUDIA



AN OVERSIZED MENSWEAR SHIRT WRAPPED TO FIT THE FEMININE BODY EMPHASISING THE CONTRAST OF MENSWEAR AND FEMININITY.



oversized menswear shirt wrapped around the feminine body

rose feeling of dressing. Starts falling. buttoned down



hope suggests backless blouse over

BONNIE & CLAUDIA



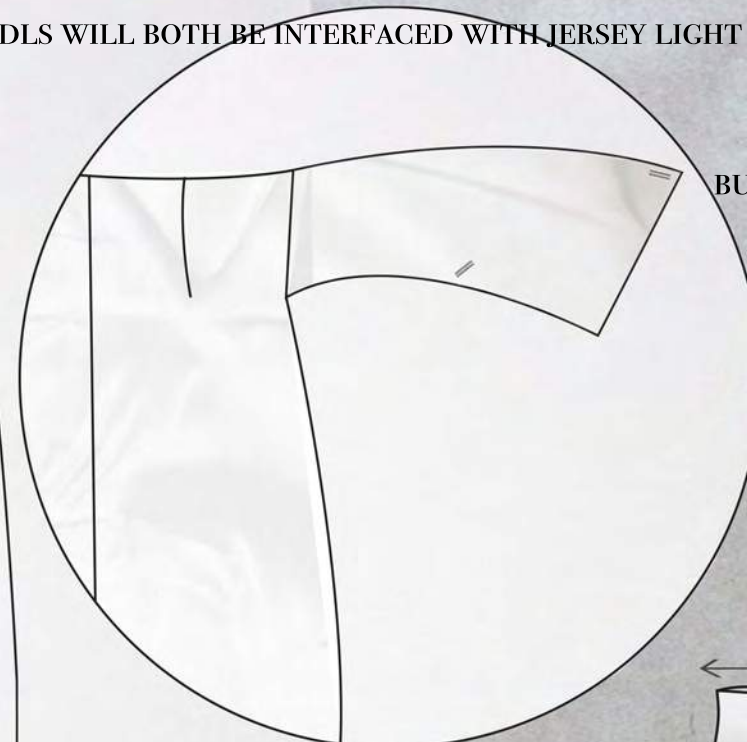
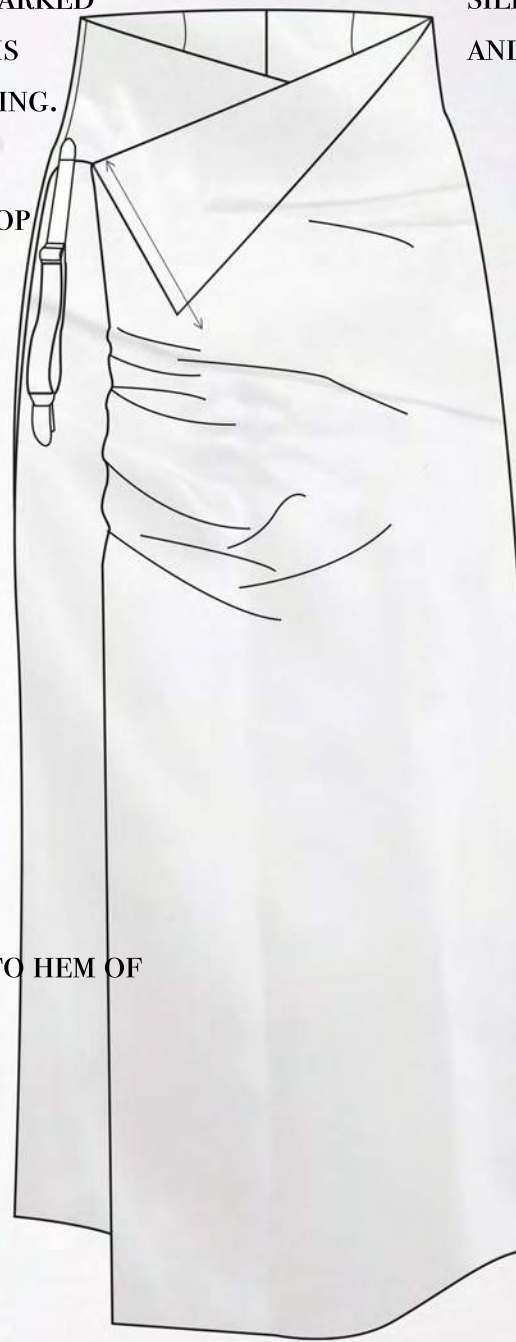
GATHER THROUGH HAND STITCHING FROM NOTCHES MARKED ON PATTERN MAKING SURE THE BOTTOM OF THE SKIRT IS STRAIGHT THEN APPLY LIGHTWEIGHT JERSEY INTERFACING.

SILK SKIRT WILL BE DOUBLED SIDED THROUGH BEING BAGGED OUT. THE FRONT PANEL AND LLS WILL BOTH BE INTERFACED WITH JERSEY LIGHT WEIGHT INTER FACING.



FOLD OVER 15CM DOWN FROM TOP

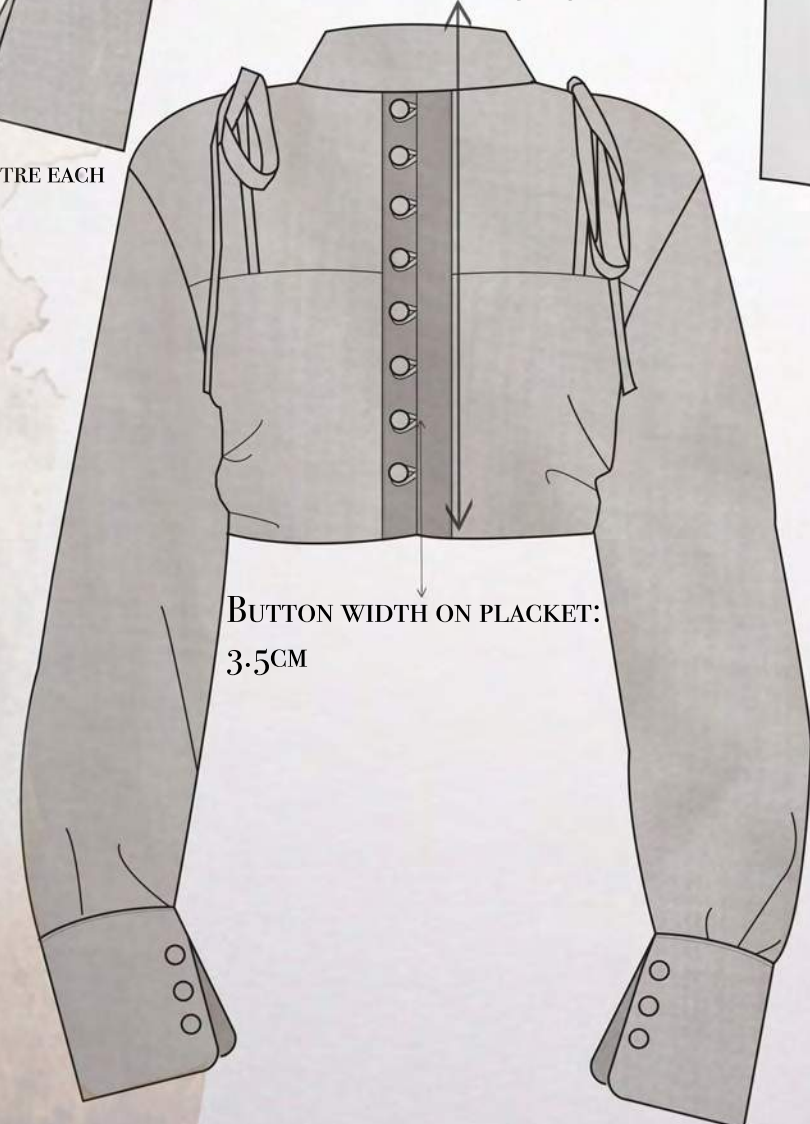
SLEEVE LENGTH: 46CM



BUTTONHOLES TO BE 1.3CM LONG

LENGTH OF STRAPS: HALF A METRE EACH

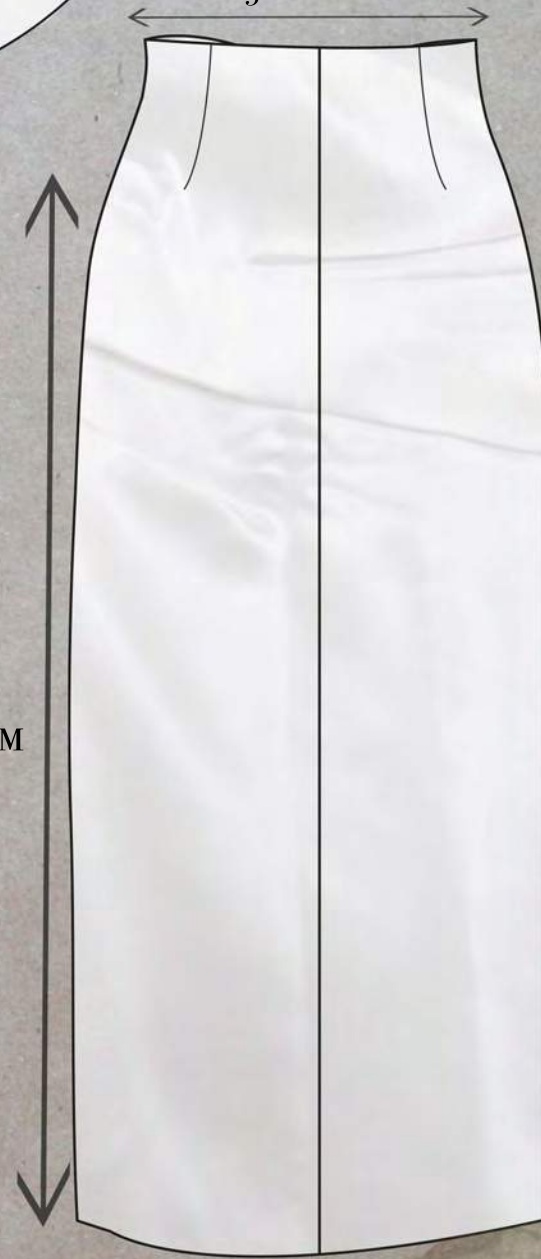
FROM CB NECK POINT TO HEM OF SHIRT: 36.5CM



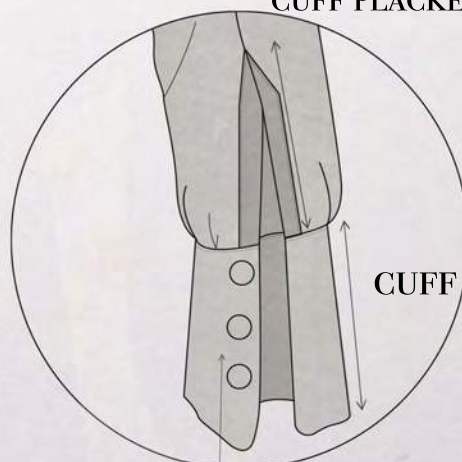
BUTTON WIDTH ON PLACKET: 3.5CM

SKIRT LENGTH CB TO HEM: 101CM

25" WAIST



CUFF PLACKET LENGTH: 6.5CM

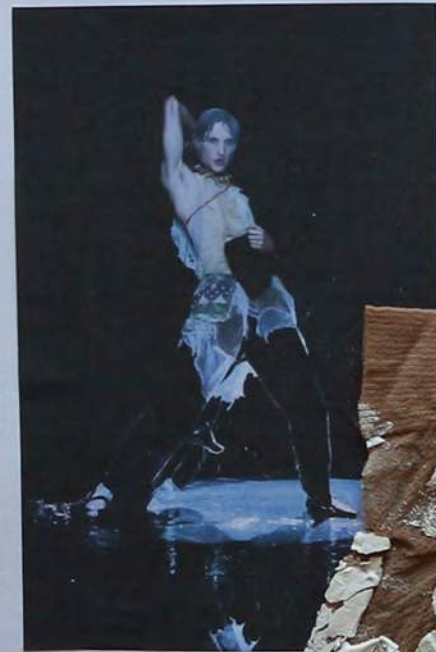


CUFF LENGTH: 11CM

BUTTON WIDTH APART: 3.5CM



consider yf and lace race draped to be more organic



Asymetric tight top with texture slight sheer



Texture paste on lights / texture is nice but not sustainable for wear



perfect black knit with layered lace

BONNIE & CLAUDIA





← see the print for lining, post  
THE LINING WILL USE MY PRINT TO CREATE A DISCRETE DETAIL THAT WILL ONLY BE SEEN WHEN THE GARMENT IS IN MOTION.



vest knitted or lighter found in ingesto  
make alternate lace workshirts



Chyle Vitos

slight flare right leg



see high neck with belt



by double pocket



BONNIE & CLAUDIA



ALL SEAMS AND FRONT FACINGS  
WILL BE BINDED WITH A 2CM BIAS  
TAPE

**FULL FRONT VIEW:**

80CM FROM SIDE NECK  
POINT TO BOTTOM  
RAGLAN SLEEVE

COLLAR BREAK POINT TO TIP: 33CM  
0.5CM FROM EDGE TOP STICH AROUND COLLAR

**FULL BACK VIEW;**

TURN UP HEM 4 INCHES AND IN THE VENT  
CREATED A MITED CONER

80CM VENT IN CENTRE BACK HEM

156CM FROM COLLAR CB TO BOTTOM HEM

FULL BELT LENGTH: 356CM  
0.5 FROM EDGE TOP STICH  
THROUGHOUT BELT

BONNIE & CLAUDIA





USING VINTAGE LACE HANDKERCHIEFS TO CREATE THE FEELING OF MENDING ON A DELICATE DRESS, PLACED TO EMPHASIS THE FEMININE FIGURE.

\* Think about light sheer fabrics, nice flow and drape



floor length be  
shaps, round shaps



← nice lace lower

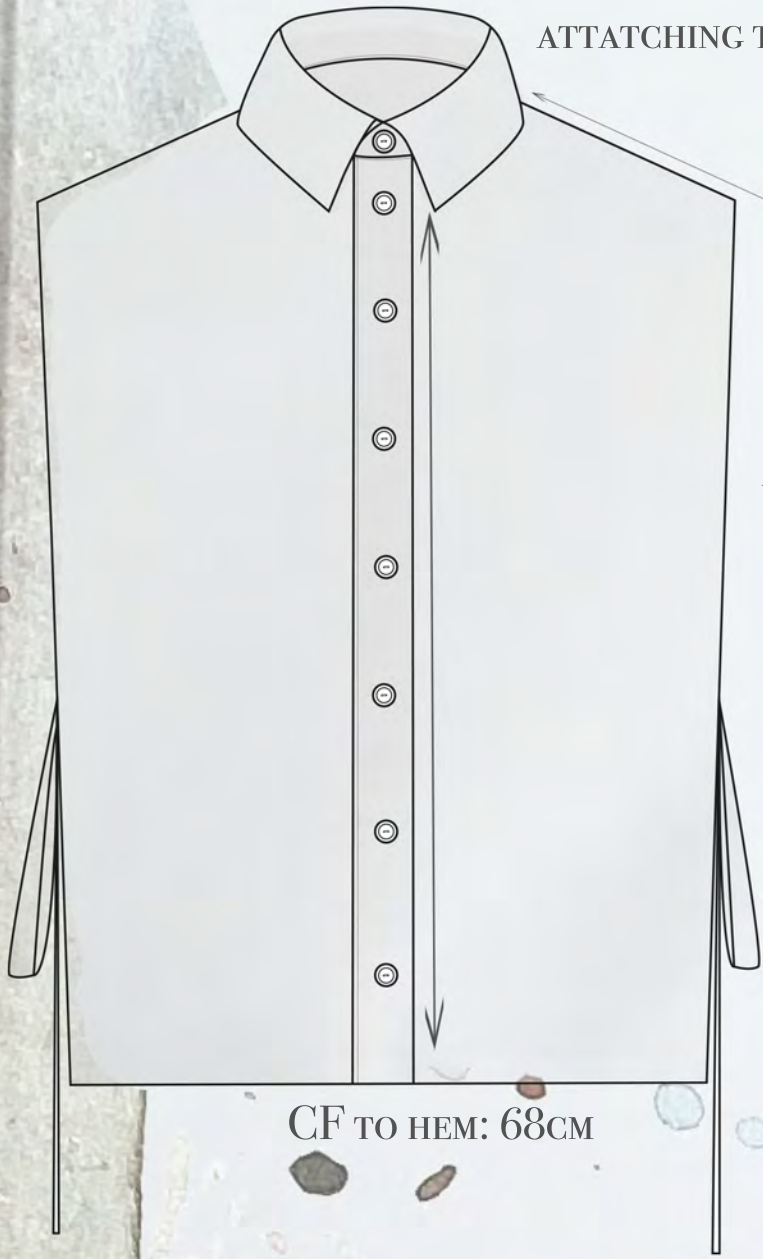
↑ patchwork all

left base

BONNIE & CLAUDIA



SHIRT MUST BE BAGGED OUT ON BODY PANELS BEFORE ATTATCHING THE PLACKETS TO GIVE A CLEAN EDGE.



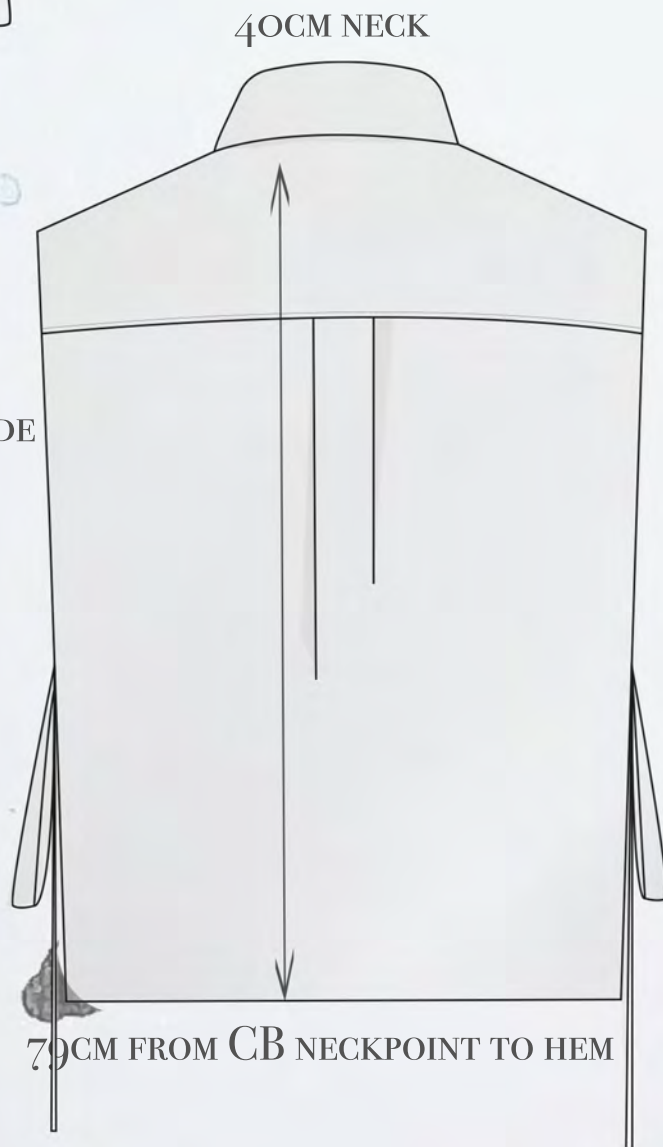
SHOULDER POINT TO SIDE: 17CM

ATTACH STRINGS 44CM DOWN FROM SHOULDER POINT IN SEAM. STRINGS SHOULD BE 1CM WIDE AND 76CM LONG

1.3CM BUTTONS PLACE 4.5CM APART DOWN CF PLACKET.

CF TO HEM: 68CM

PLEAT IN BACK: 2" WIDE



40CM NECK

79CM FROM CB NECKPOINT TO HEM

WAISTBAND ATTATCHES 6CM PAST CF

SIDE OF WAIST BEND TO HEM: 113CM



31" WAISTBAND

INSEAM: 69CM

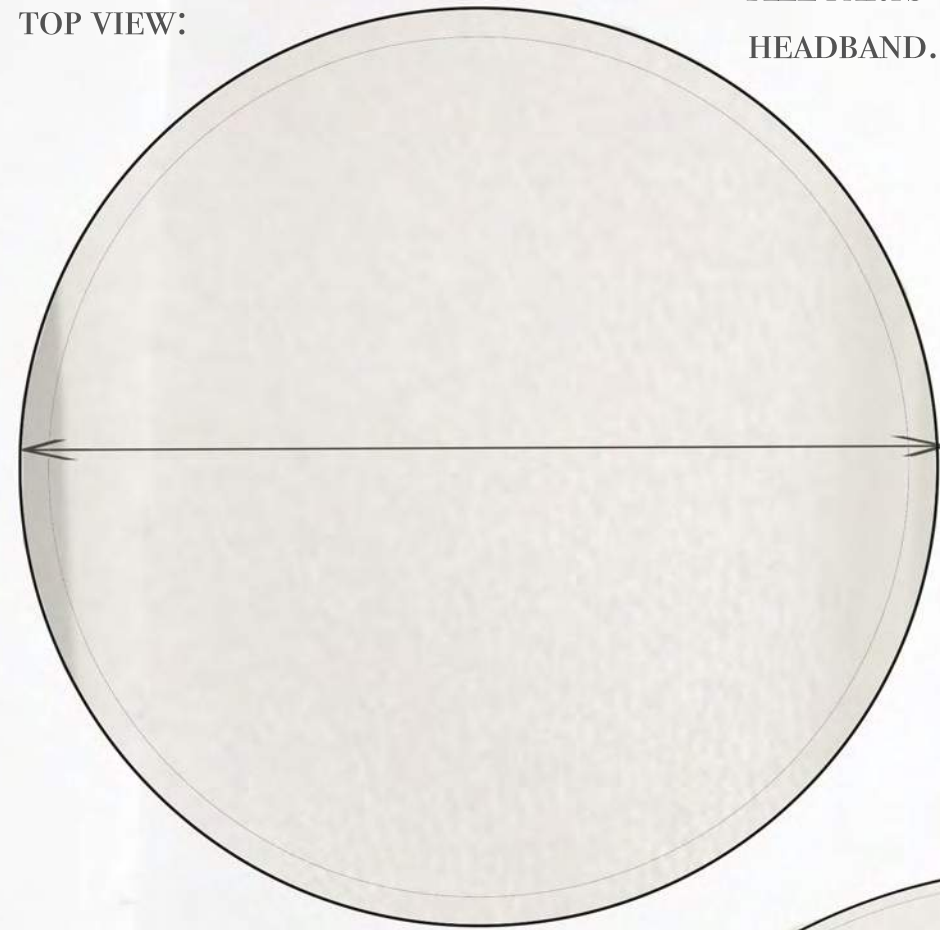


HEM TURN UP: 10.5CM

THE TROUSERS WILL BE BOUND WITH 1CM BIAS TAPE, OPEN SEAM STYLE.



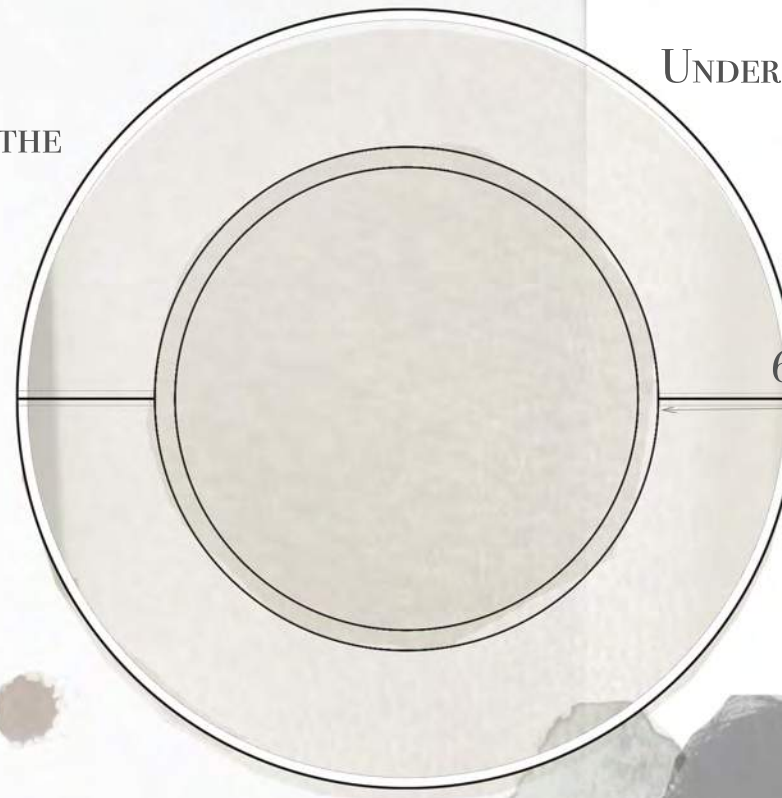
TOP VIEW:



ACROSS HAT: 25CM

ALL PARTS OF HAT ARE BAGGED PUT APART FROM THE HEADBAND.

UNDER VIEW:



6.5CM UNDER CIRCLWIDTH

FRONT VIEW:



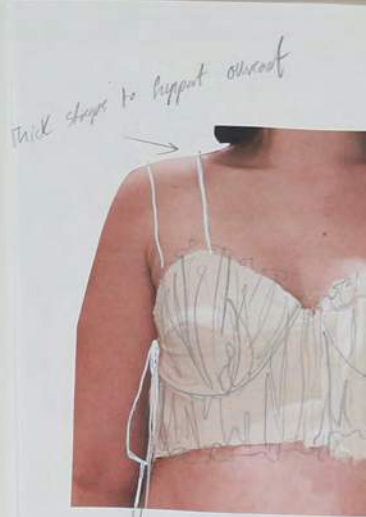
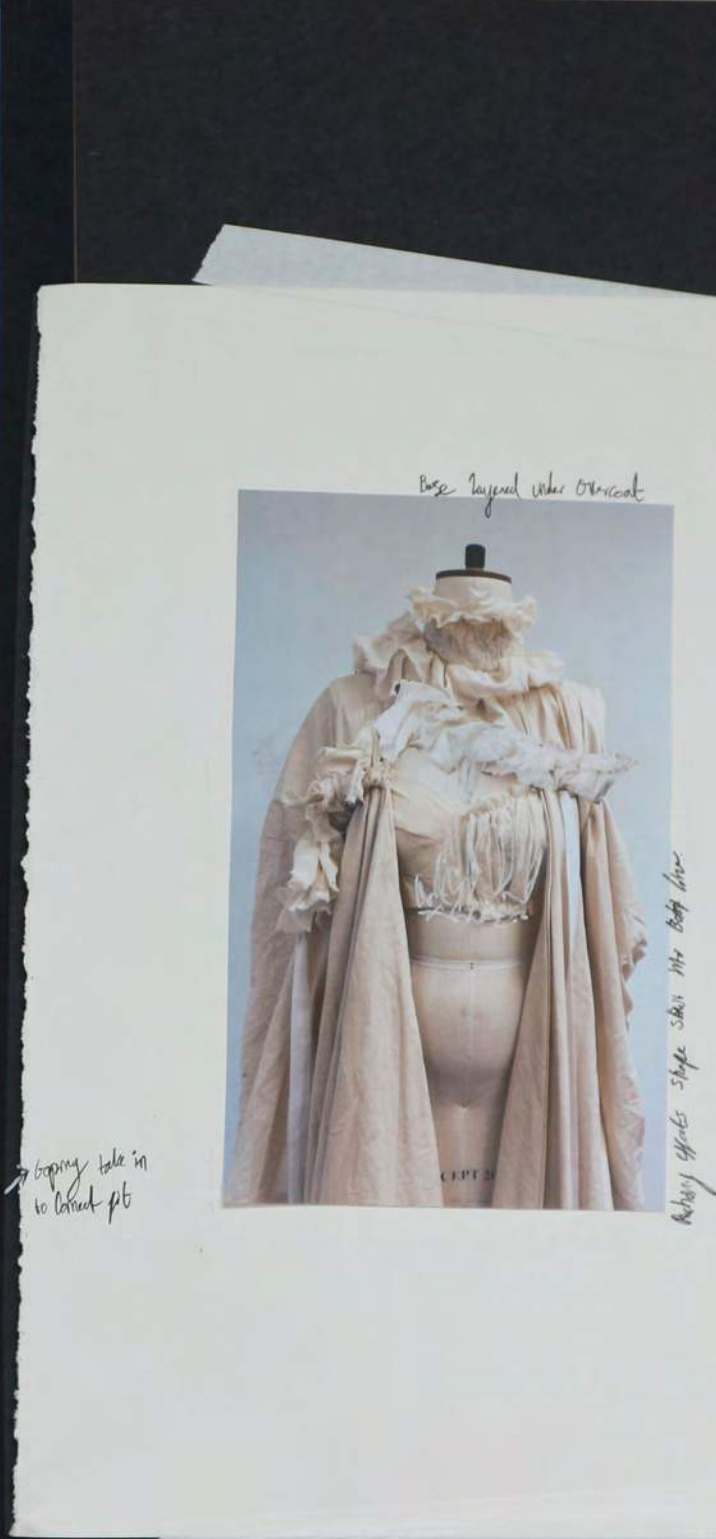
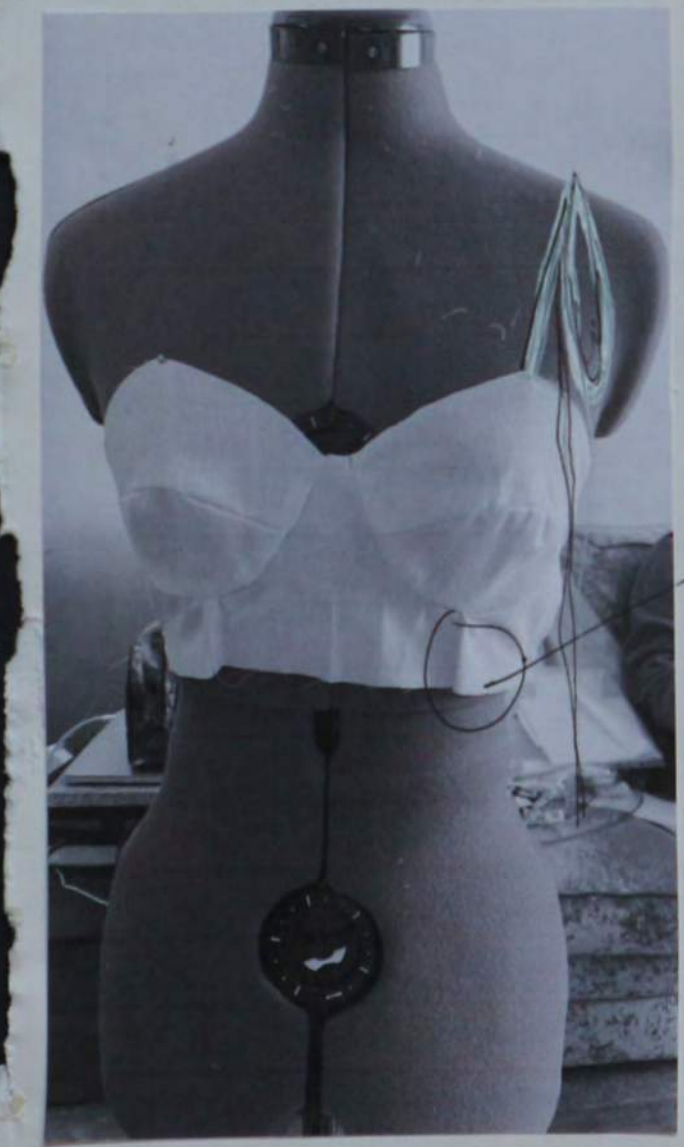
INNER BAND 4.5CM THEN FOLD AND TOP STITCH

ALL SEAMS MUST BE TOPSTITCHED 0.5CM AWAY FROM JOINING SEAM.

BONNIE & CLAUDIA







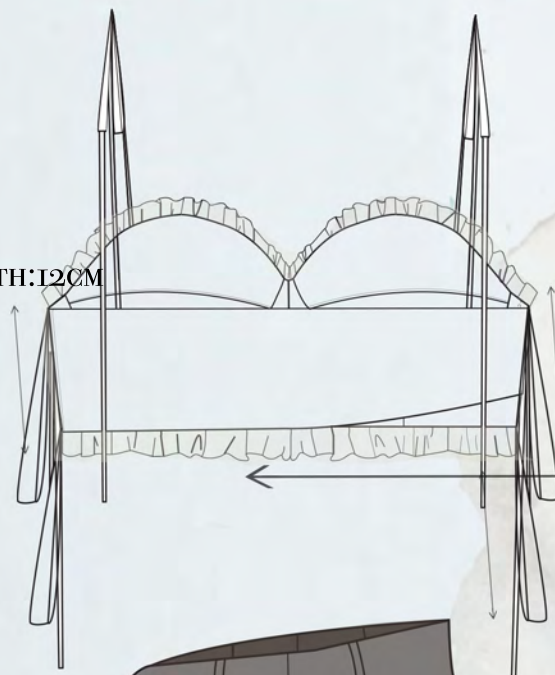
BONNIE & CLAUDIA



STRAPS LENGTH :76CM

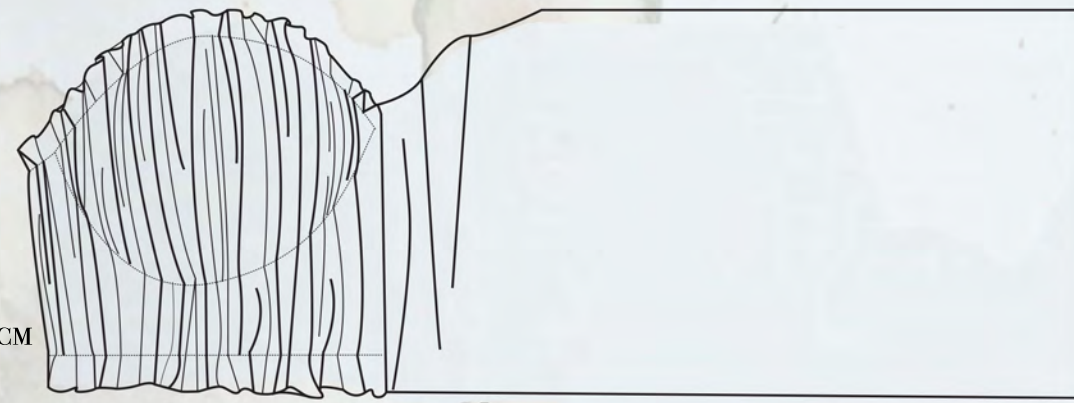


SIDE BRA LENGTH:12CM



SHORT SIDE OF BRA:9CM

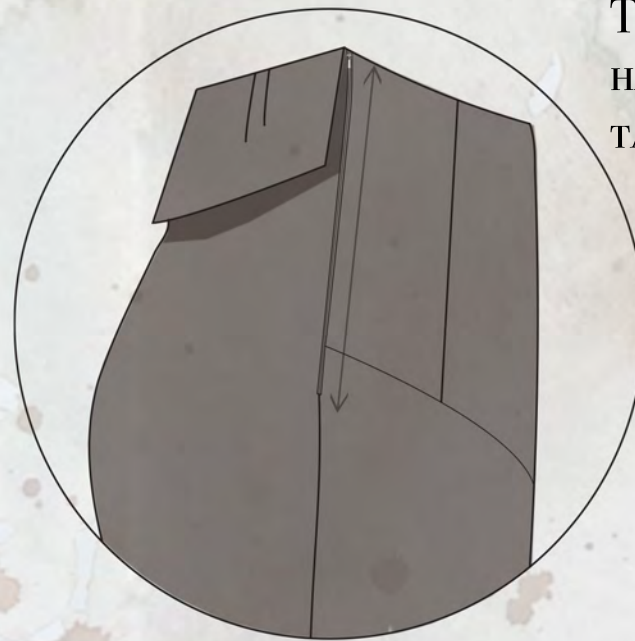
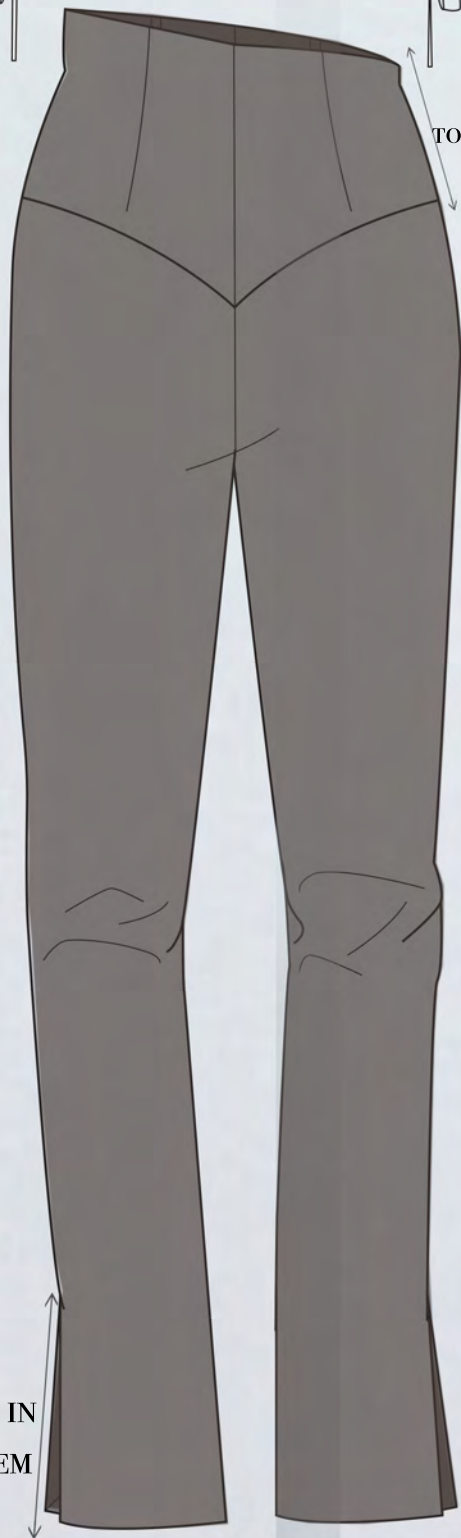
WIDTH OF BRA:42CM



42CM ADD TO CREATE GATHERING ADD 60% MORE FABRIC

THE MAIN FOUNDATION OF THE BRA WILL BE BAGGED OUT THEN HAND STITCHED TO SECURE LAYERS TOGETHER BEFORE ATTACHING TOP LAYER.

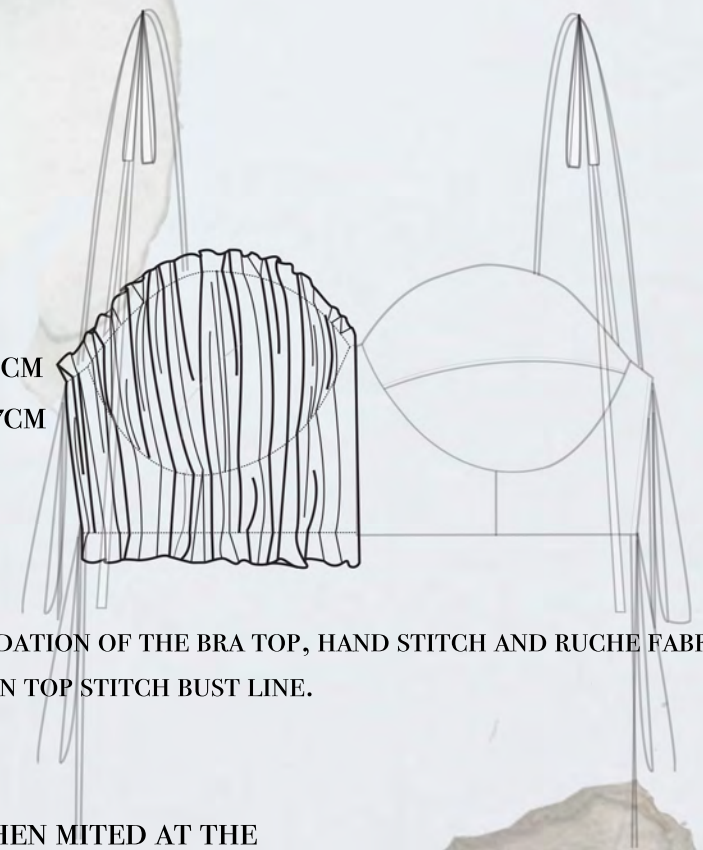
TOP PANEL LENGTH: 15CM



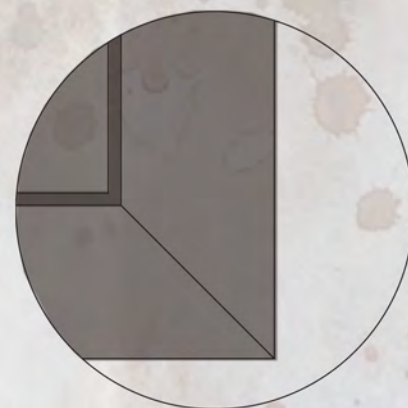
INVISIBLE 9" ZIPPER IN SEAM LEFT SIDE

FULL LENGTH OF TROUSER FROM WAISTBAND TO HEM LEFT SIDE:  
RIGHT SIDE:101CM

SIDE BRA LENGTH:12CM  
TOP SHEER LAYER: 17CM



BASIC FOUNDATION OF THE BRA TOP, HAND STITCH AND RUCHE FABRIC ACROSS THEN TOP STITCH BUST LINE.



HEM WILL BE PRESSED UP 6CM THEN MITED AT THE CONERS, ALL THE INSIDE SEAMS WILL BE BOUND WITH OPEN SEAMS.

12CM VENT IN SEAM TO HEM

BONNIE & CLAUDIA





BONNIE & CLAUDIA  
By HOLLY ROSE