

MOLLY TIMMINS

MADE IN HOUSE



AUTUMN/WINTER 22

@molly_timmins

M

28-38 CROMWELL ROAD
+447501882917

@molly_timmins
molly.a.timmins@gmail.com
London
+447501882917

MOLLY TIMMINS

Focused on;

everyday life, this collection documents the simplicity of living in the new found reality of the current present day. Created in a time when being at home was essential it draws on the illusion and mood of refined existence, and the simplicity of life.

M

initial draping
silhouettes / will
change

potential start point for silhouette



develop both possibilities
or quilted vest on this



long crinkle
and
cotton

this with quilted
vest?



01



84

05_Look 1_Two Tone Trench Fitting
 Duel Colour Gabardine Trench with Detachable Front Panel
 Straight Leg Triple Top Stitch Trouser
 Dubied Rib Sleeveless Cardigan



85

02



13.



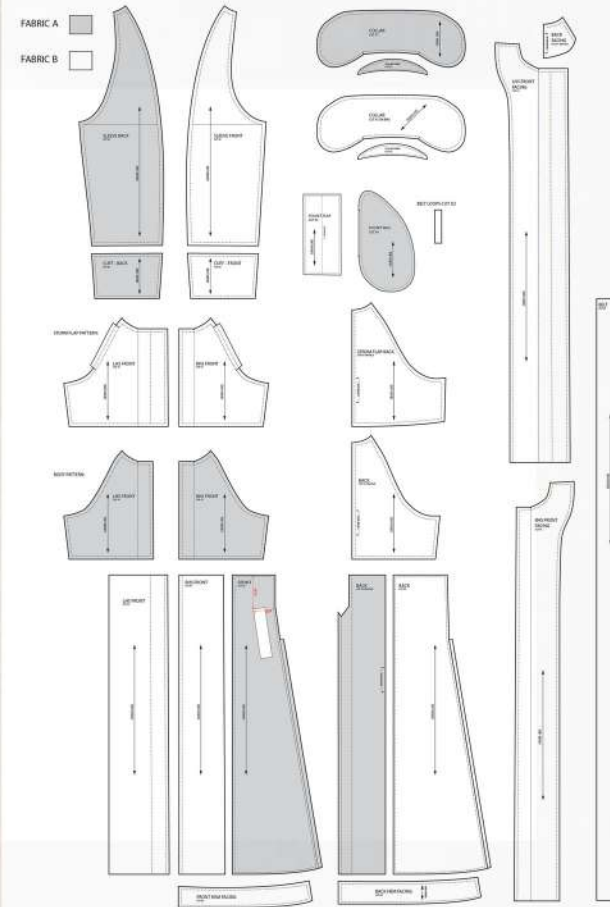


PATTERN LAYOUT

Two Tone Trench
 Dual Colour Gabardine Trench with Detachable Front Panel
 Match Fabric according to Pattern

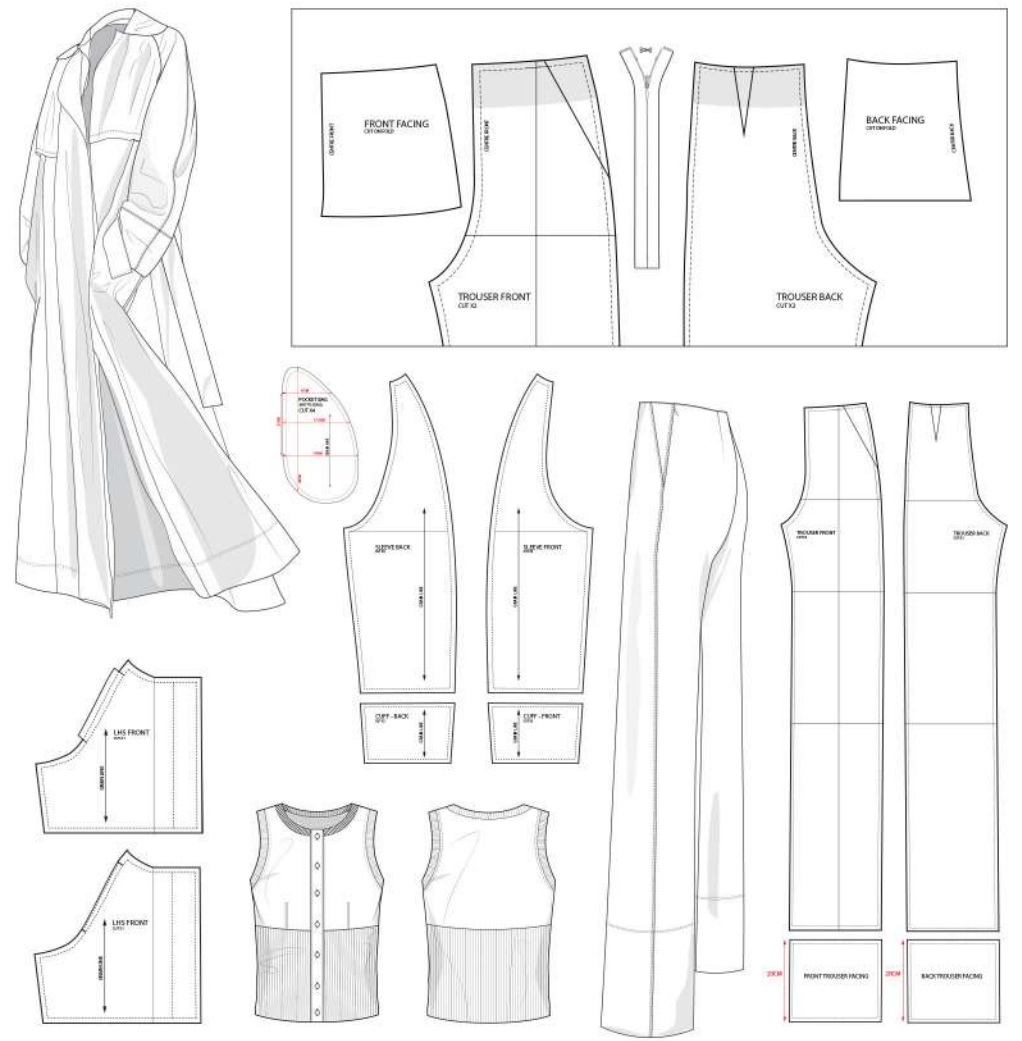
AMMENDMENTS

- Adjust Collar Shape
- Bring Storm Flap Down 5cm
- Add Length to Sleeve Cuff





LOOK 1 // two tone gabardine trench coat with raglan sleeve
 black wool tailoring straight leg trouser with top stitch detail
 cotton lined mix sleeveless cardigan with exaggerated rib detail





12.



01. / wool blend tailored trouser with top stitch details
two tone gabardine trench coat
oat mock rib sleeveless cardigan with brown tipping





04.



02. / cut out front knit dress





01

change chain



02

*+ lengthen body 3.5cm
→ Adjust crotch*



03

Sew pleats down

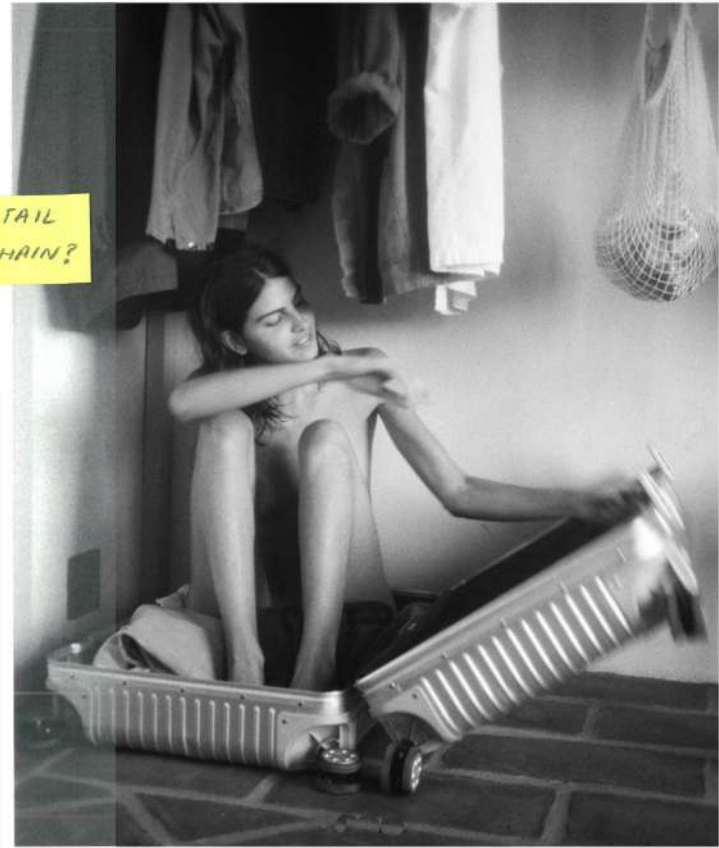
**ADD CHAIN DETAIL
- HOME DOOR CHAIN?**

*- Reduce from back
- Move into darts*

FABRICATION:
→ Drapery trouser
→ Knitted body?
→ Mix of knits
Rib/double bed
or dual colour
→ Chain fastening
+ JACKET on top



//door chain



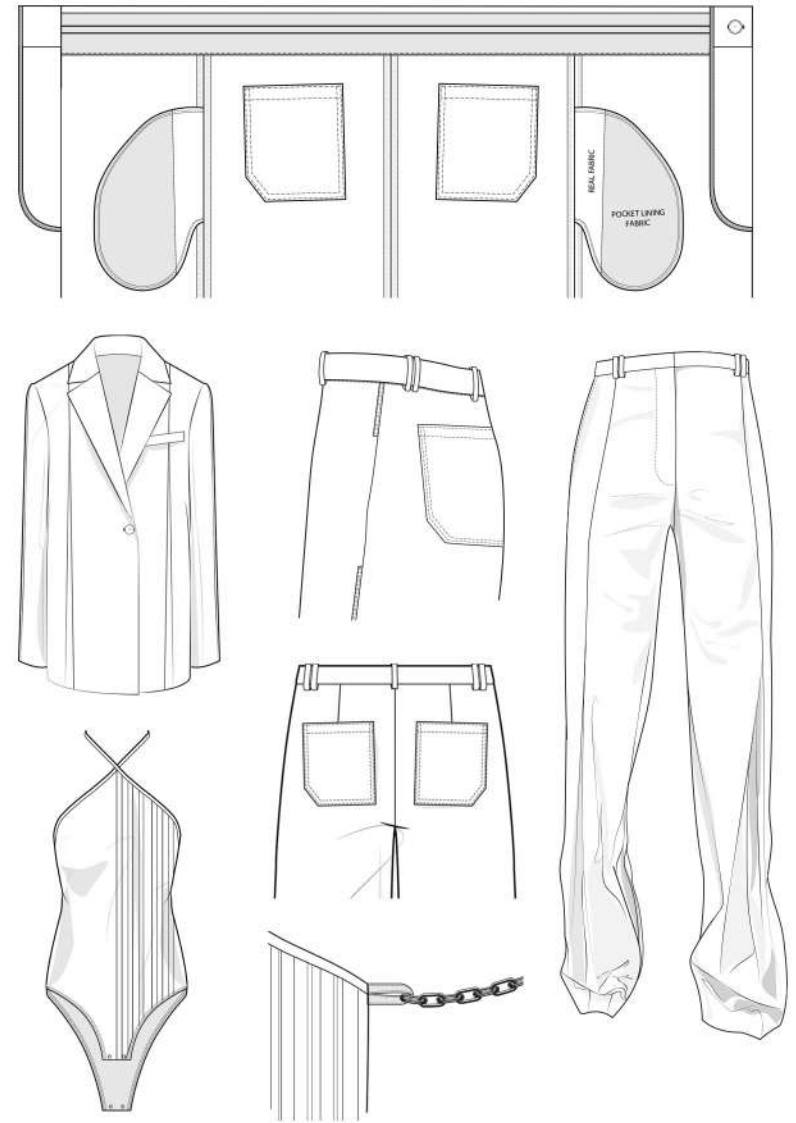
03_Look 3_Knitted Tie Neck Bodysuit with Chain Detail
Wide Leg Pleat Trousers





10gg knitted bodysuit in sour lime with chain fastening

LOOK 03 // cotton double pleat trouser
Final Fitting



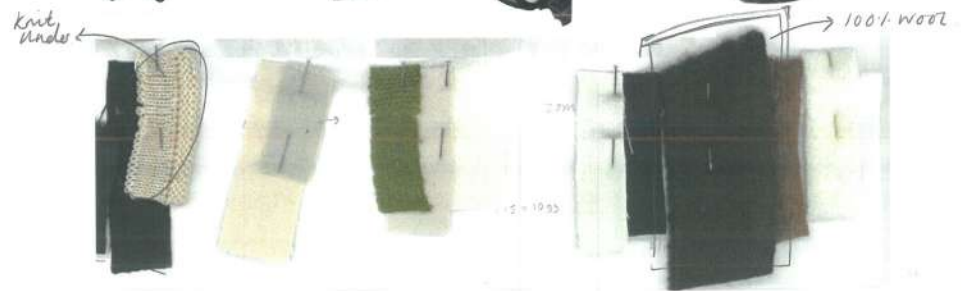


07.





03_Look 6_100% Deep Brown Wool Double Breasted Coat
 Silky Back Seam Trousers With Vent Detail
 Merino Cashwool Knitted Vest





style coat open



3cm hem



*

styling for short hold coat open.



SIDE PROFILE



Sleeve drape 1/4"

drape on floor



Look & Fabrication
- 100% cotton yarn
- Ellen Vale
- Chocolate Brown
- 100% wool





Move pleat position.

Remove extra volume + shaping

Create pleat sleeve.

Curve?

back sleeve vent.

turn + turn hem.

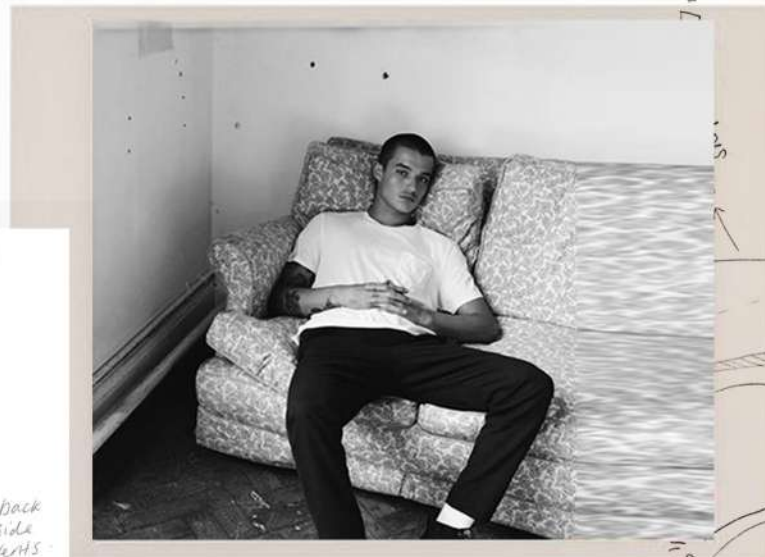
Big knit scarf? instead of silk

Shorter silhouette on bottom.

curved seams

two back side vents
pocket placement

7 to 10 4 → need to move pleat more towards side seam
* no stitching externally on outside pleat.



add a bit more pleat?

36''



undersleeve = 26cm

8th sleeve length 62.5cm

CHOUVE, VESTE, CALÇONA, CAMISETA, CALÇONA, CONTRASTE, TEE-SHIRT ET PANTALONEN COTON, CANALI, CITYCAMP.

00_Look 3_Vintage_Drapping
Double Pleat Tailored Jacket with In Seam Pocket Details
Wide Le Pleat Trousers

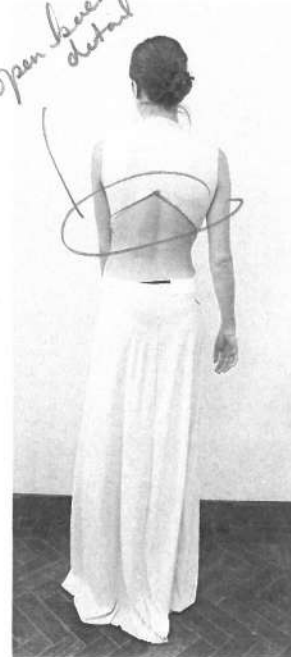
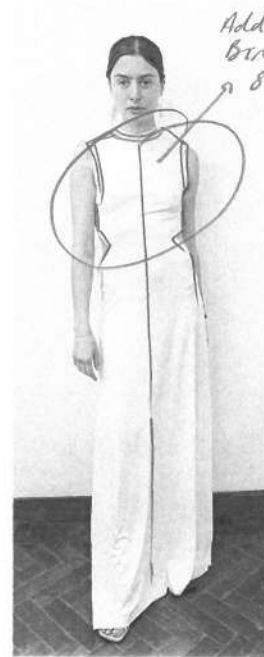
Vent on side? instead of back?

Vent

Curve?

better on

LOWER NECK

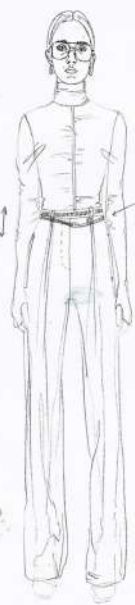




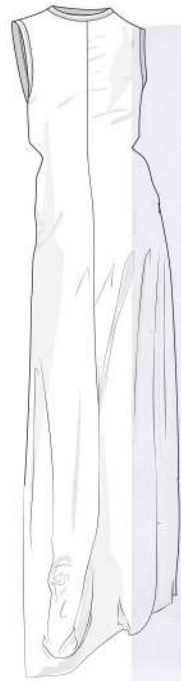
high neck knit
+ Accessories
gold horse chain
+ big scarf



split seam
smaller shoulder width



bold collar



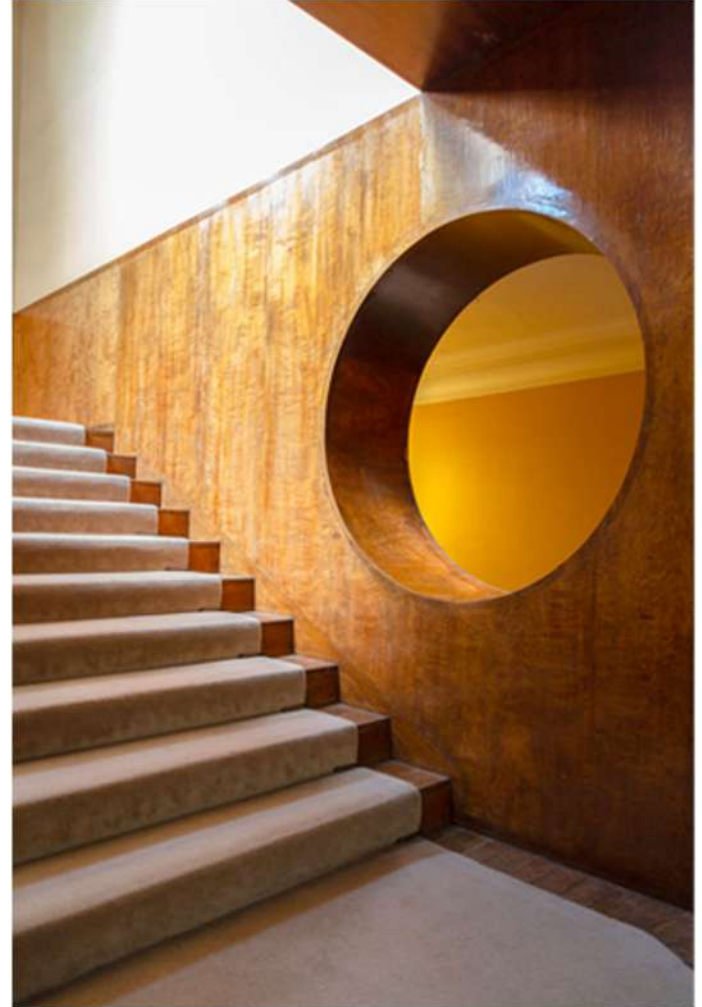
LOOK 5 dress//long sleeveless fluid dress



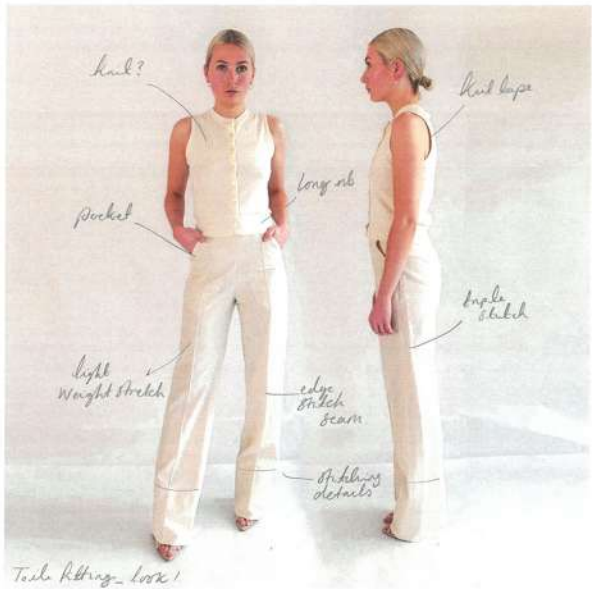


LOOK 5 // sleeveless brown long dress

01.



made in house



05_Look 1_Knitted Sleeveless Cardigan With Mock Rib Details
Straight Leg Trousers with Top-Stitch Details



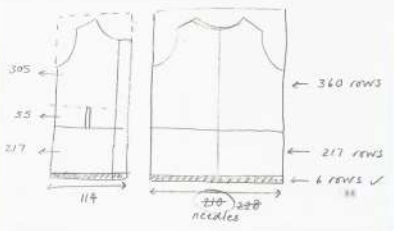
top stitch trials



- CONSTRUCTION DETAILS:**
- Shaped Armhole Fully Fashioned
 - x2 Needles Out for Bust Dart Line
 - 2x3 Mock Rib
 - Link on Strapping

-10 -16	-10 -18	-16 -16
-18 -16	-18 -18	-16 -16
-10 -16	-16 -18	-16 -18
100	200	300

114 needles - front







DOUBLE BELT-LOOP. DETAIL

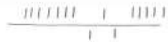


x3 mix of yarn - linen, cotton - Recycled cotton in beige mixture.



bust dart needle out

Set up:



Make Rib into double Band

xt needle out

lengthen body 5cm

2 patch pocket

3x2 mock rib tenstom swatch



11.





cres stitch around
binding.
TWIN
NEEDLE.

Two-tone
trend
dark gabardine

half-half
single bed
+ line detail

knit
under.

L5.

L4.

L1.

L2.

L3.

L6.

DOUBLE PLEAT



made in house
MOLLY TIMMINS