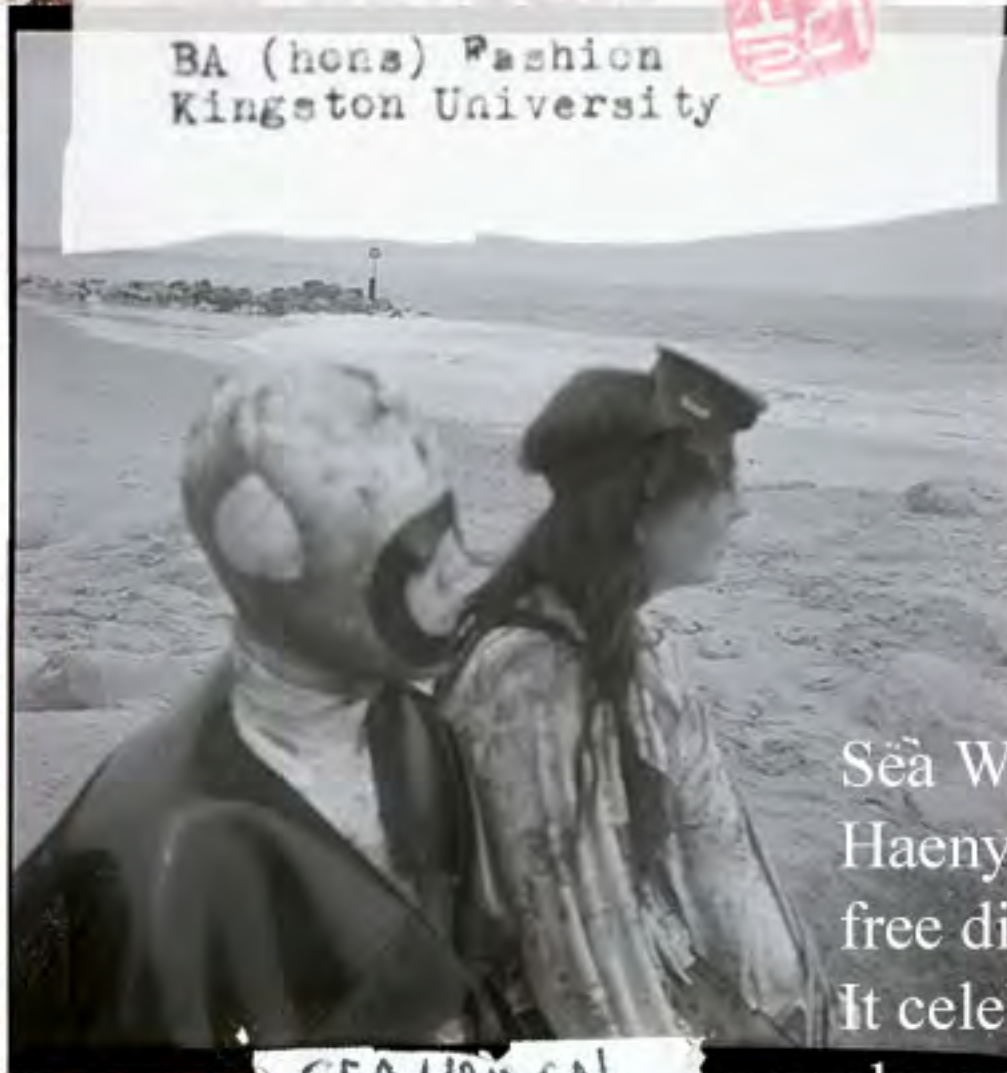


MOLLY MORETON
07783 664 648
mollymoreton@hotmail.co.uk
@m.moreton_

BA (hons) Fashion
Kingston University



SEA WOMEN

Sea Women is inspired by Haenyeo [해녀], the female free divers of South Korea. It celebrates their sustainable, almost matriarchal society - challenging expectations of ageing, women and motherhood.

해녀 HAENYEO

'SEA WOMEN'



LESSONS IN SUSTAINABLE LIVING +
CHALLENGING EXPECTATIONS OF
AGING, WOMEN + MOTHERHOOD
FROM THE FEMALE DIVERS OF
JESU ISLAND.

CELEBRATING AGE + WEATHERED SKIN

SEA WOMEN
MOOD



ORANGE FLOATS FROM
GOVERNMENT TO MAKE IT EASY
TO SPOT ONE THAT DIE UNDER
WATER.



SEA WOMEN
COLOUR



GLUED SEAMS



RUBBER
GLUED SEAMS

1.5 CM TAPE FINISH



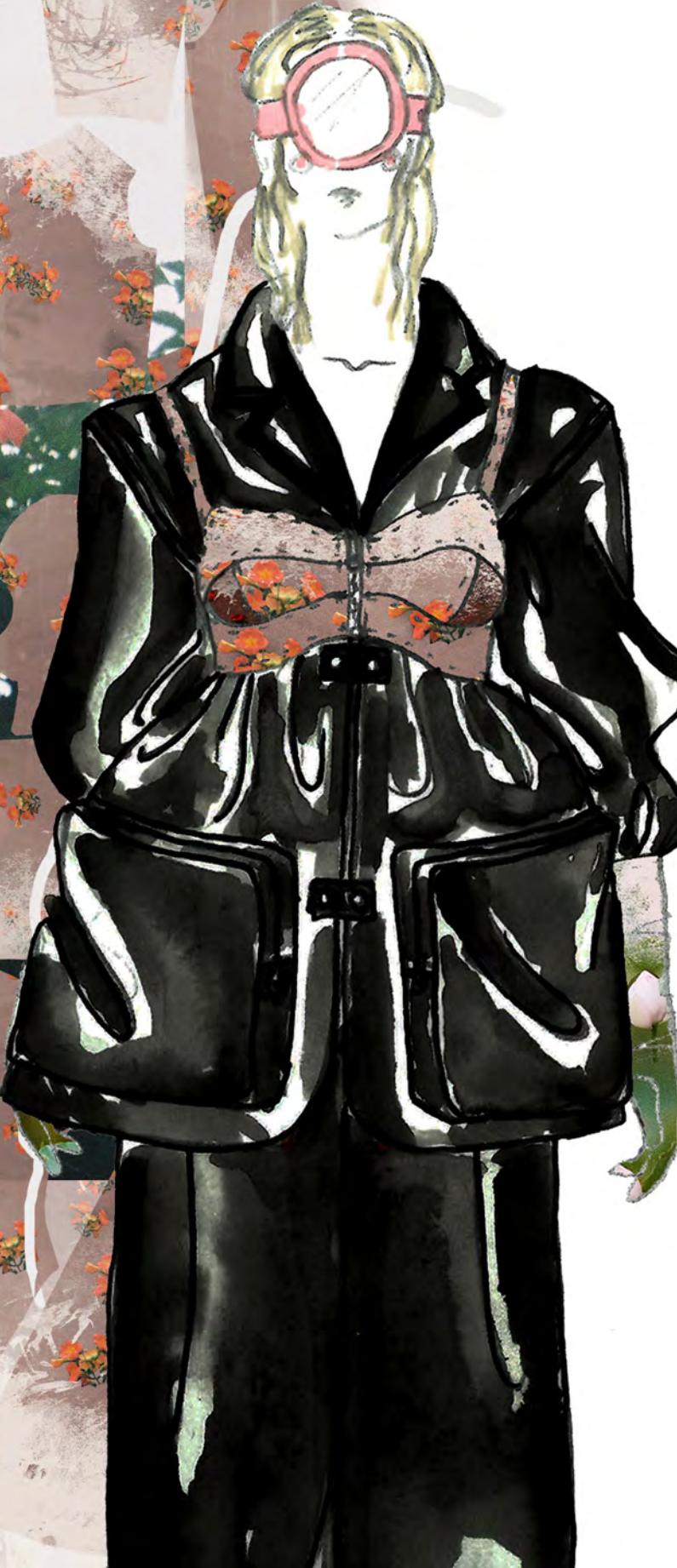
SEA WOMEN
FABRICS



WAISTBAND
ELASTIC SEWN TO
RUBBER



PRINT 01 - BUSAN FLOWER



SEA WOMEN
PRINT

PRINT 02 - SEONJU LOTUS



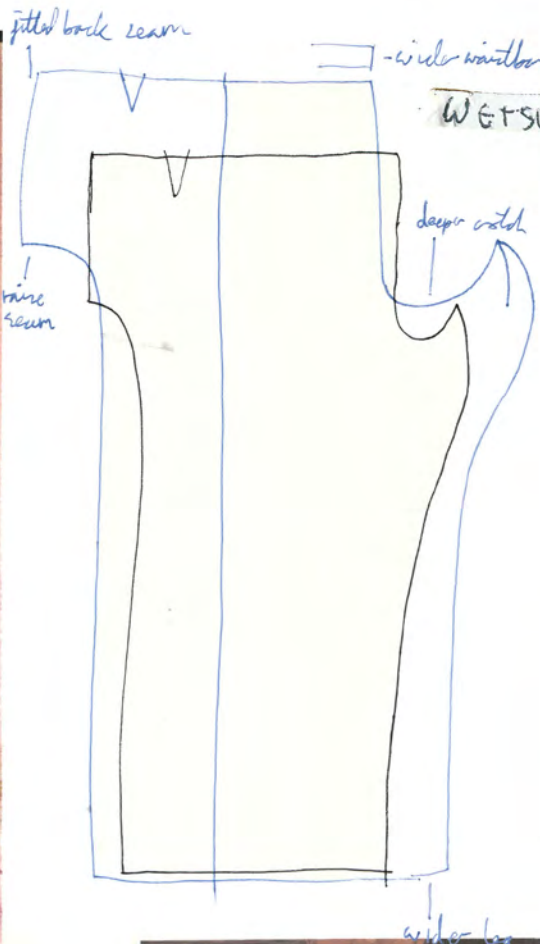
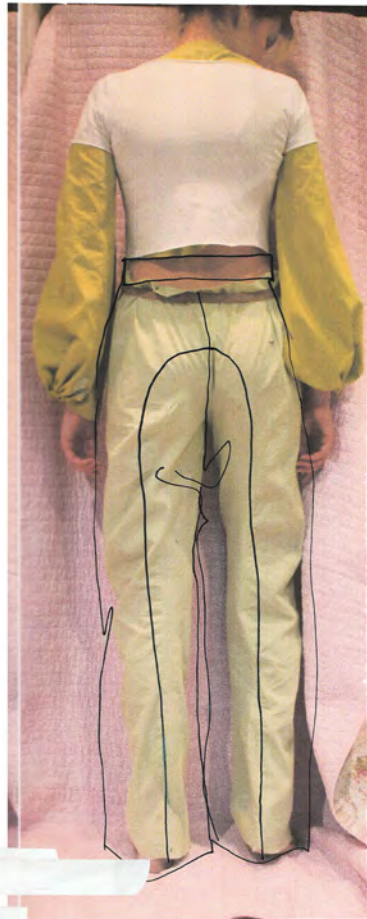
SEA WOMEN
PRINT





MASCULINE WORK SHAPES WITH CONSTRICTING

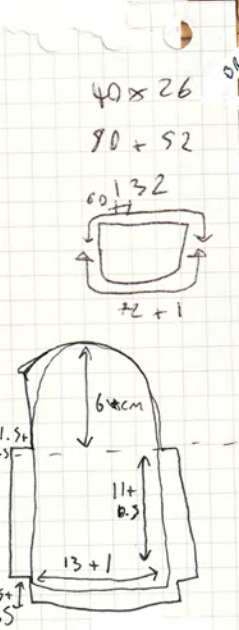
FEMININE LAYERS
CREATING SCULPTURAL FORM



LOOK 1

SEA WOMEN
DEVELOPMENT





LOOK 1
SEA WOMEN
DEVELOPMENT

LOOK 1

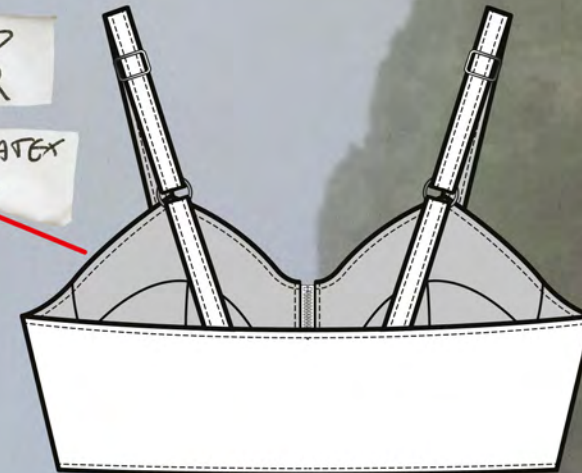
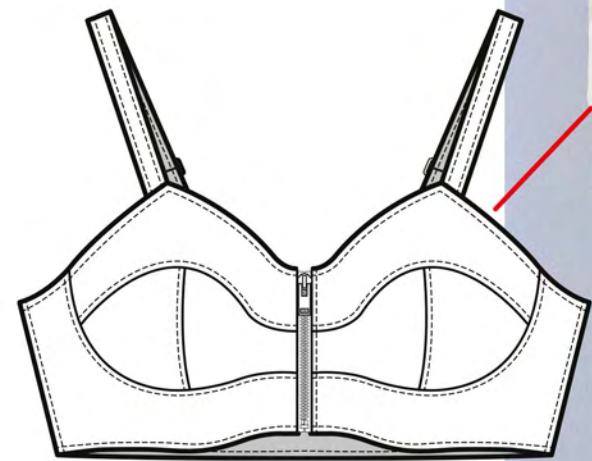
PRINT 04-BUSAN FLOWIRBURGANDY

0.33 LATEX

PRINT 02-BUSAN FLOWIR

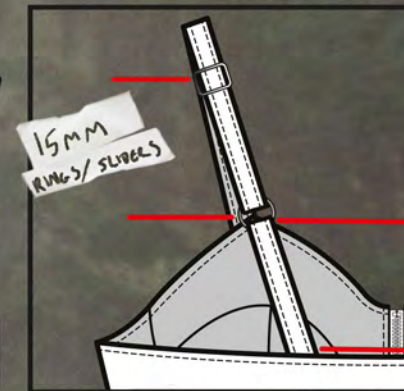
성산포

SEONGSANDPO, JESU-DO



PRINTED VELOUR

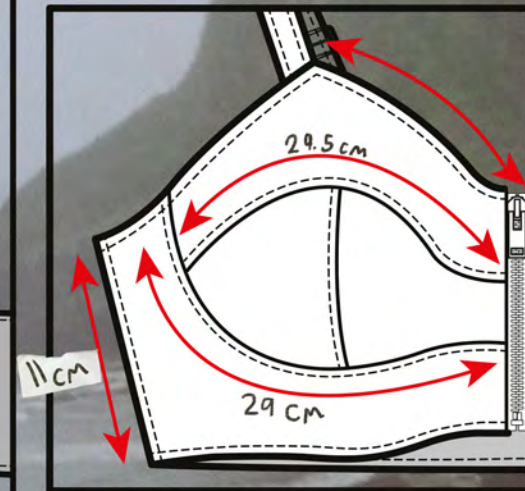
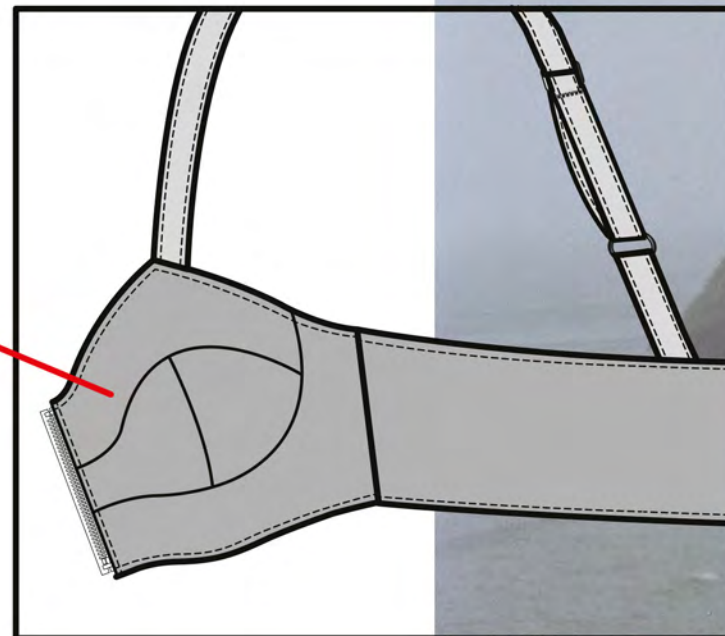
0.33 LATEX LINING



15mm RINGS/SLIPERS

8cm

GLUED SEAMS



11cm OPEN END ZIP

LOOK 1
SEA WOMEN
SPEC

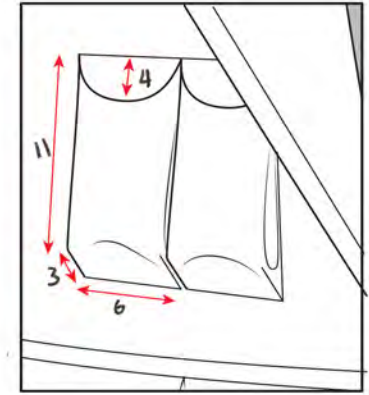
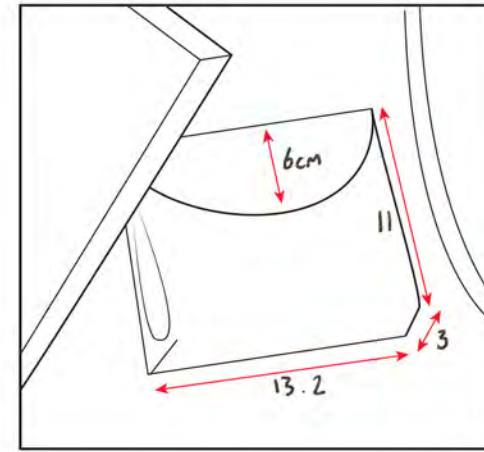
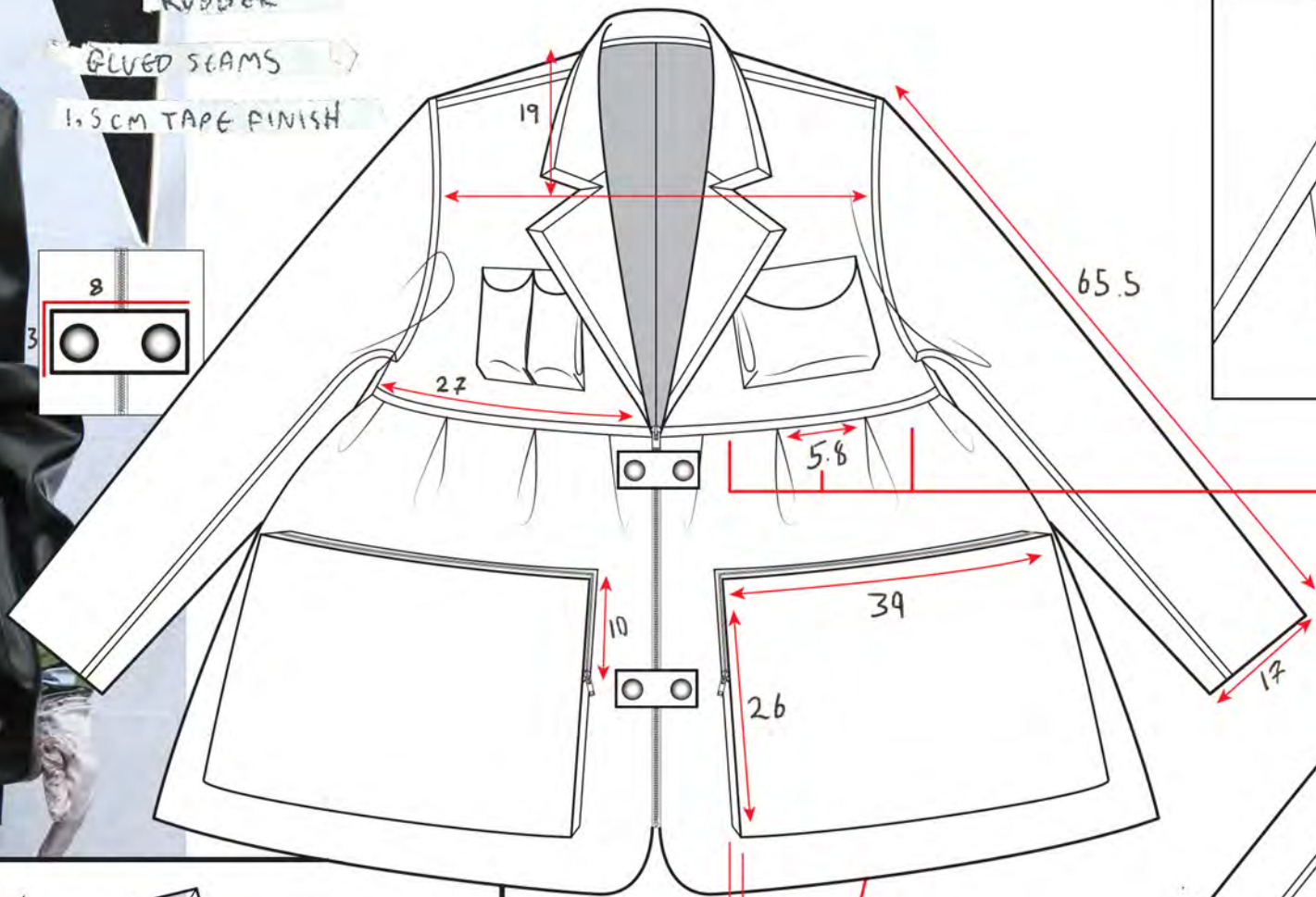
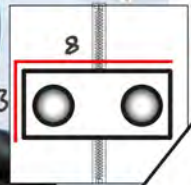
0.92 LATEX

LOOK 1

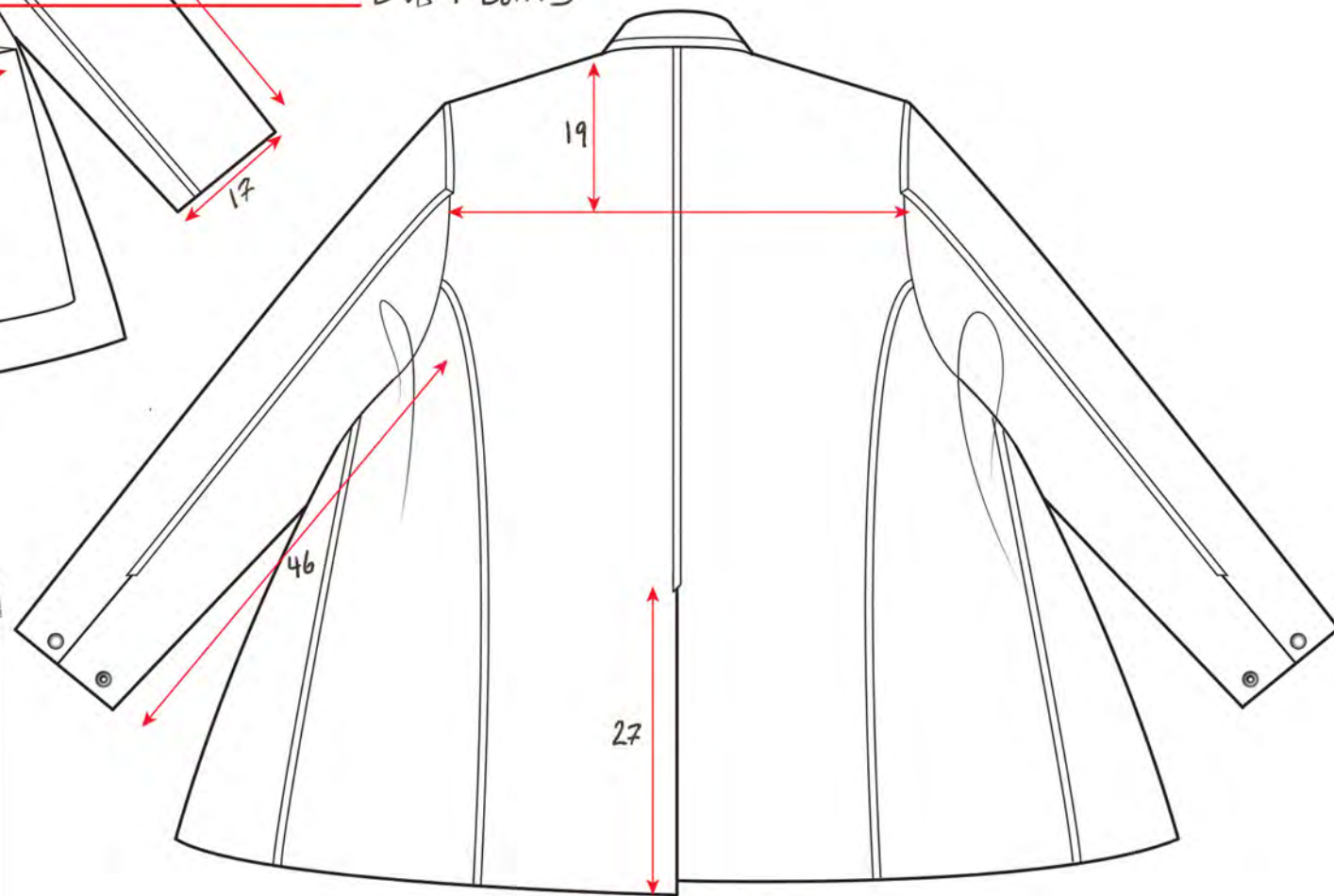
RUBBER

GLUED SCAMS

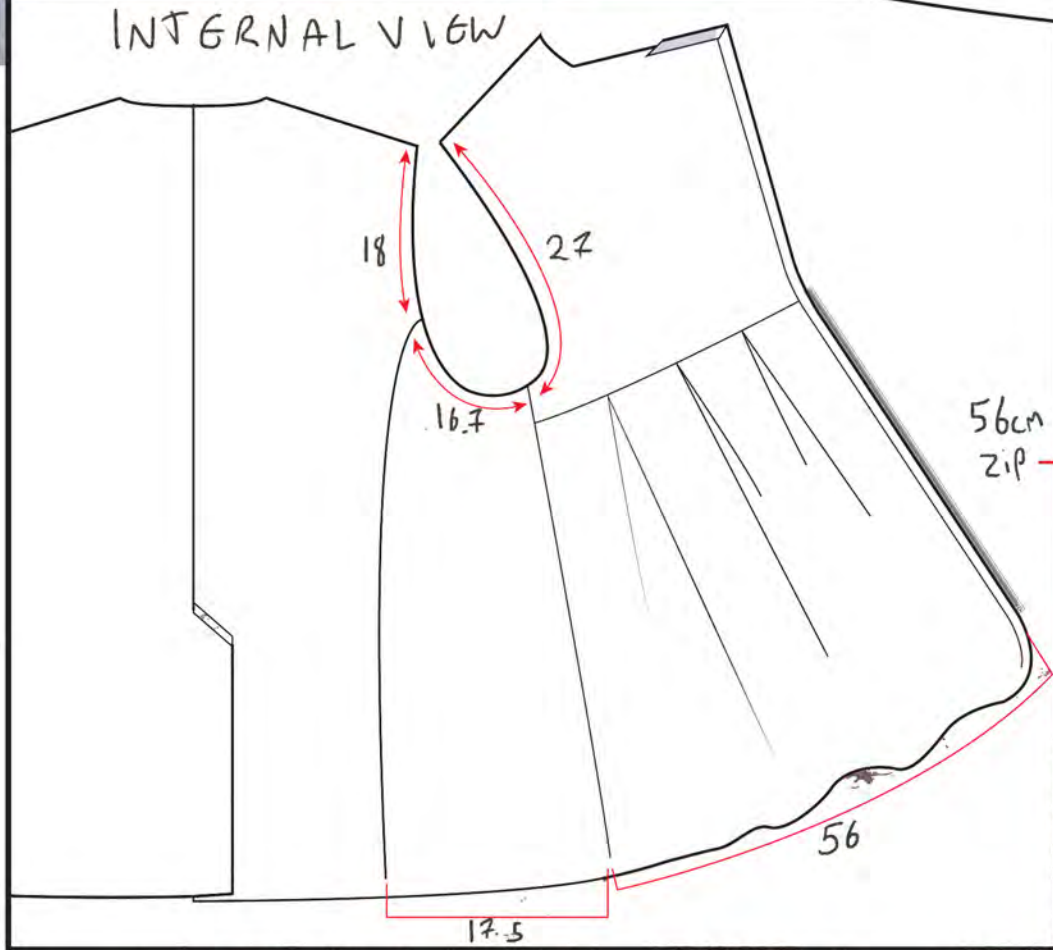
1.5 CM TAPE FINISH



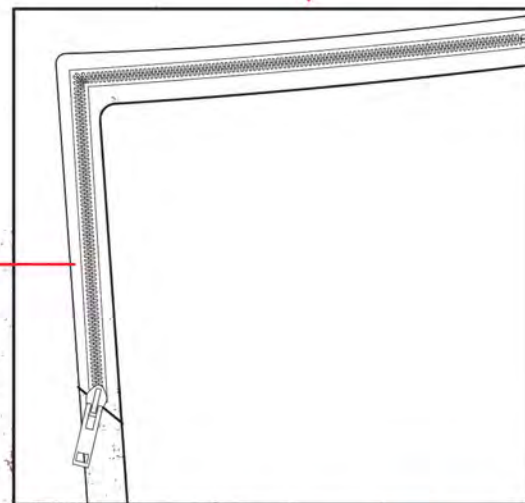
BOX PLEATS



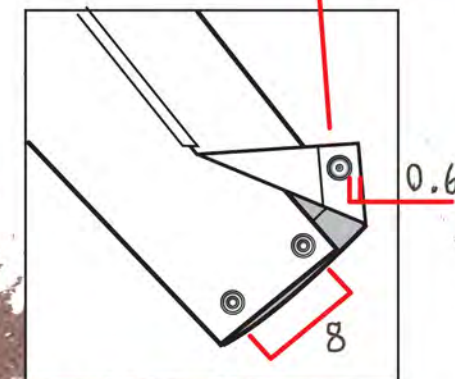
INTERNAL VIEW



56cm ZIP



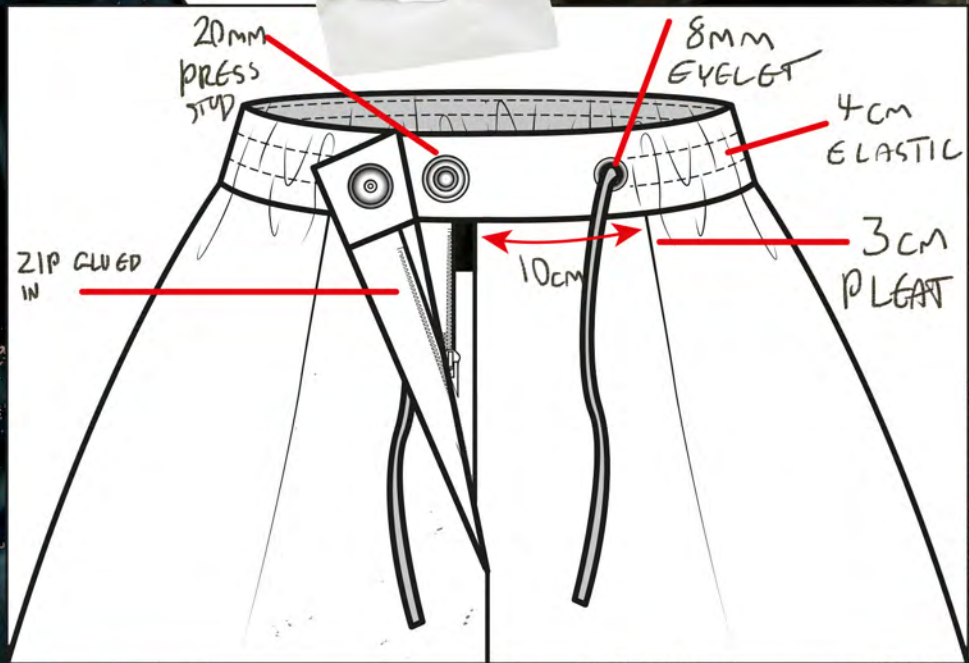
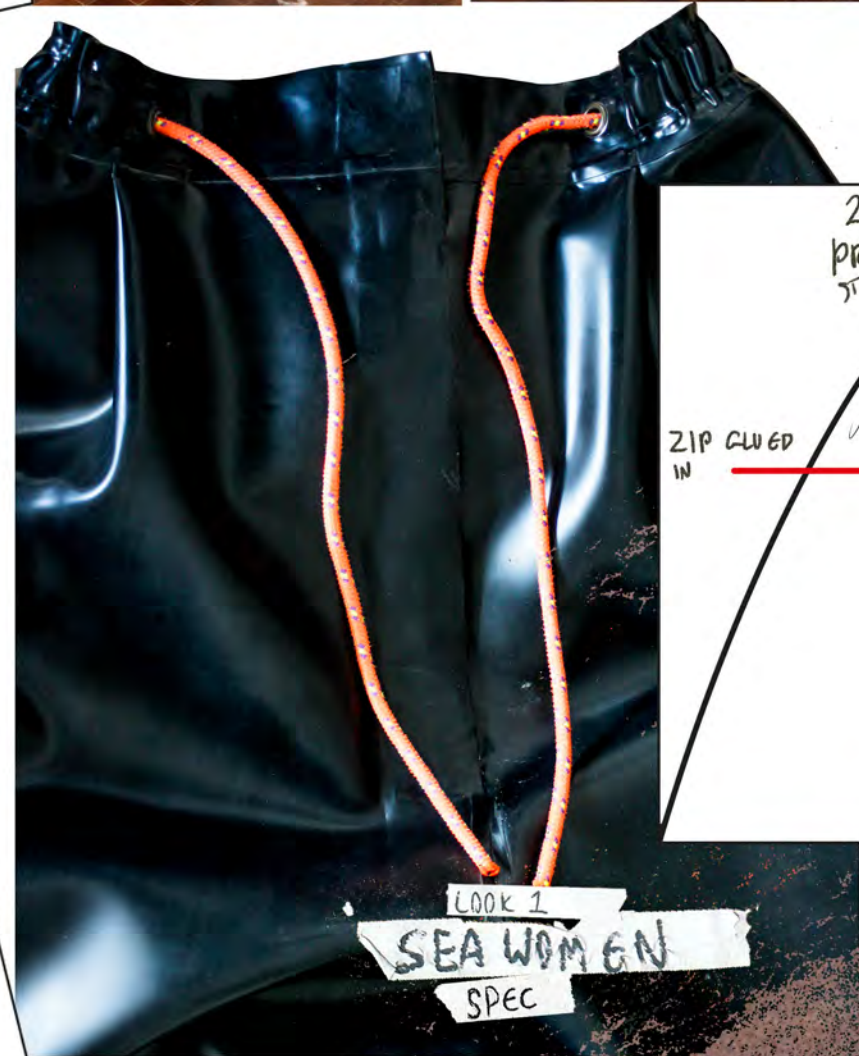
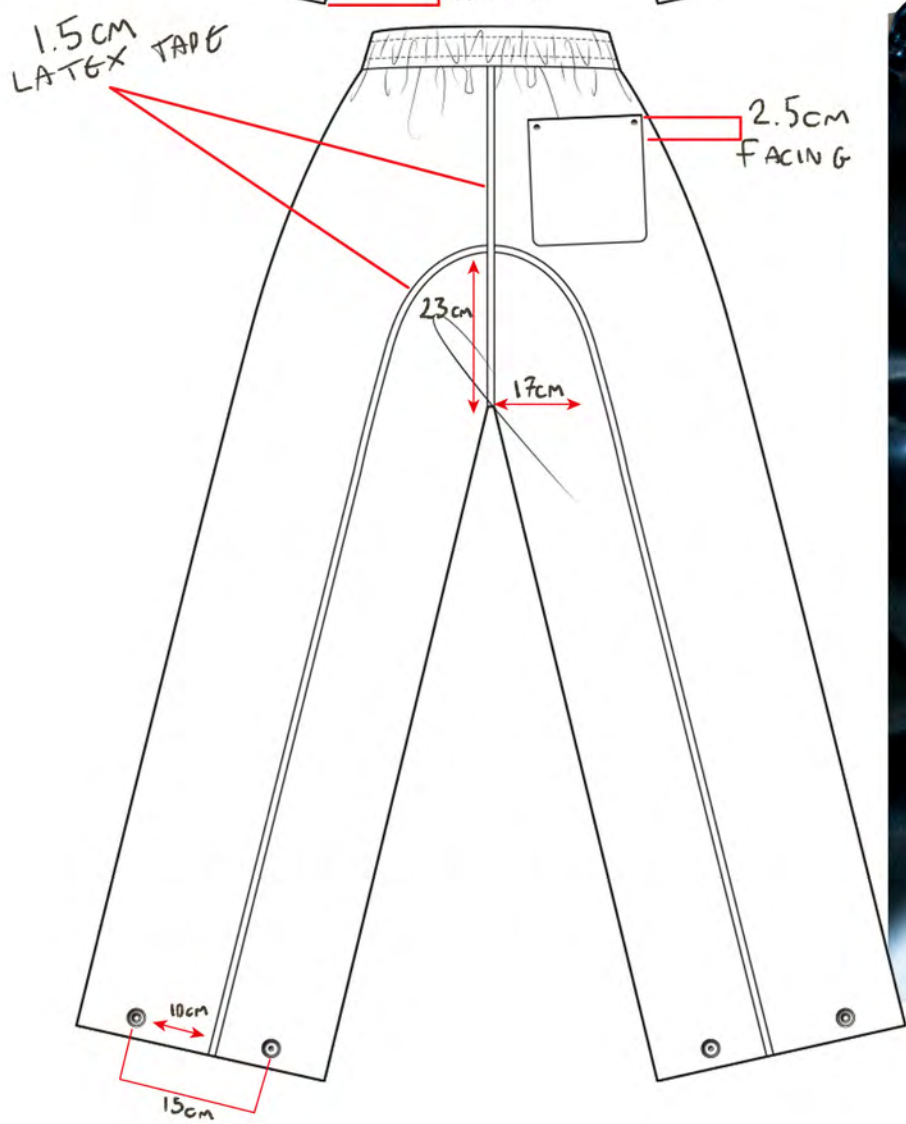
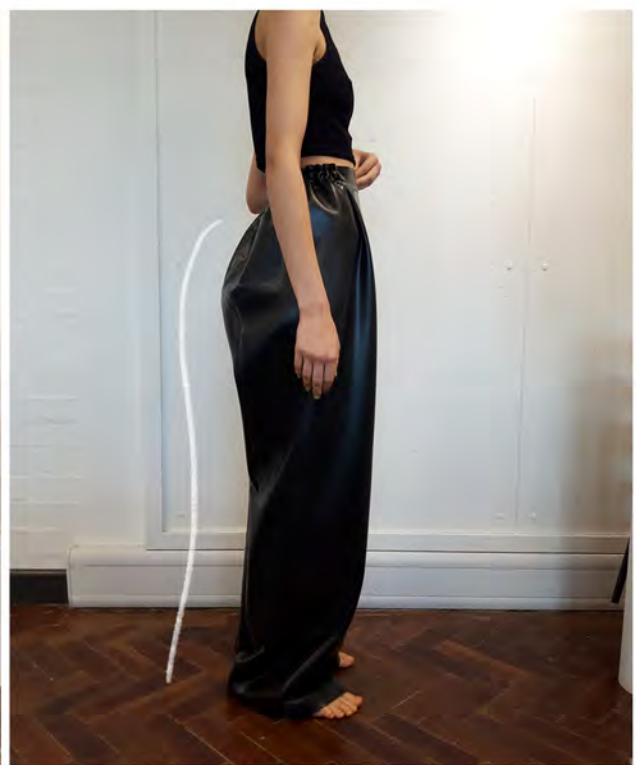
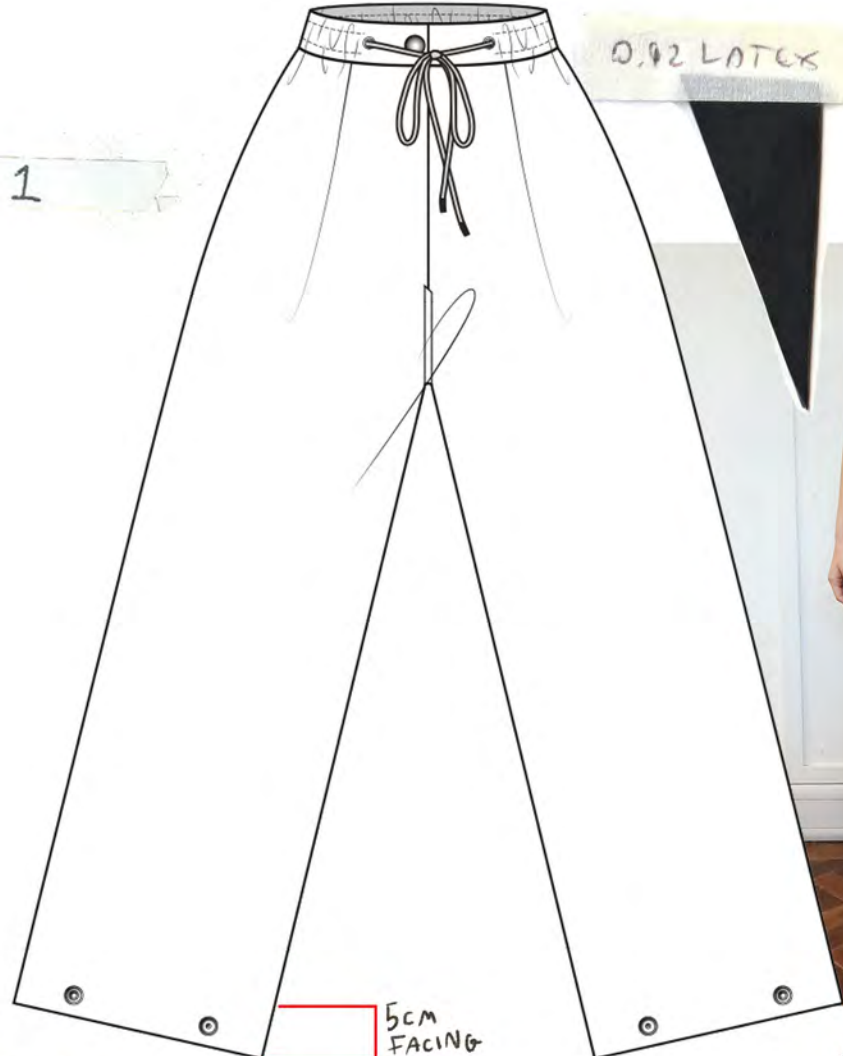
12 MM PRESS STUD



LOOK 1
SEA WOMEN
SPEC

LOOK 1

0.92 LATEX



LOOK 1
SEA WOMEN
SPEC

elastic waist

one seam

5cm FACING

1.5cm LATEX TAPE

2.5cm FACING

23cm

17cm

ZIP CLOED IN

20mm PRESS STUD

8mm EYELET

4cm ELASTIC

3cm PLEAT

10cm

10cm

15cm

LOOK 4



DROPPED

ELASTIC SHIRTING/RUCKE

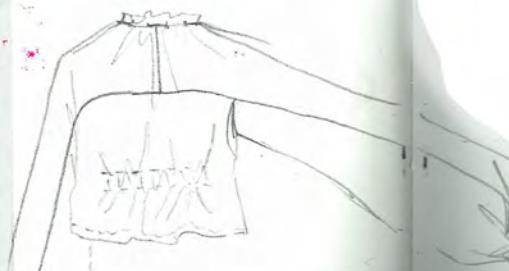


YOKE/SLEEVE JOINED

NECK GATHERED WITH LATEX OR AID



BACK



shirt look 2



GRAZIAN



DEVELOP NECK

gather



SHIRT

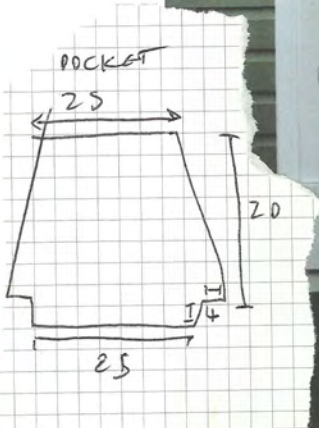


CHANNEL TO GATHER TIE

scam



LOOK 4
SEA WOMEN
DEVELOPMENT



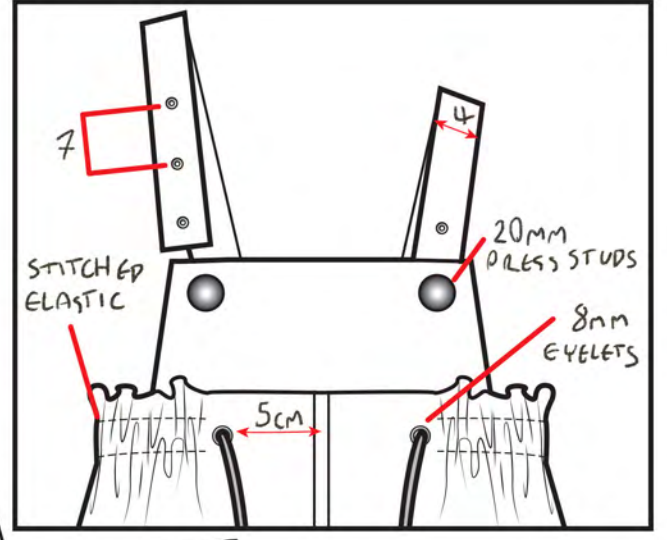
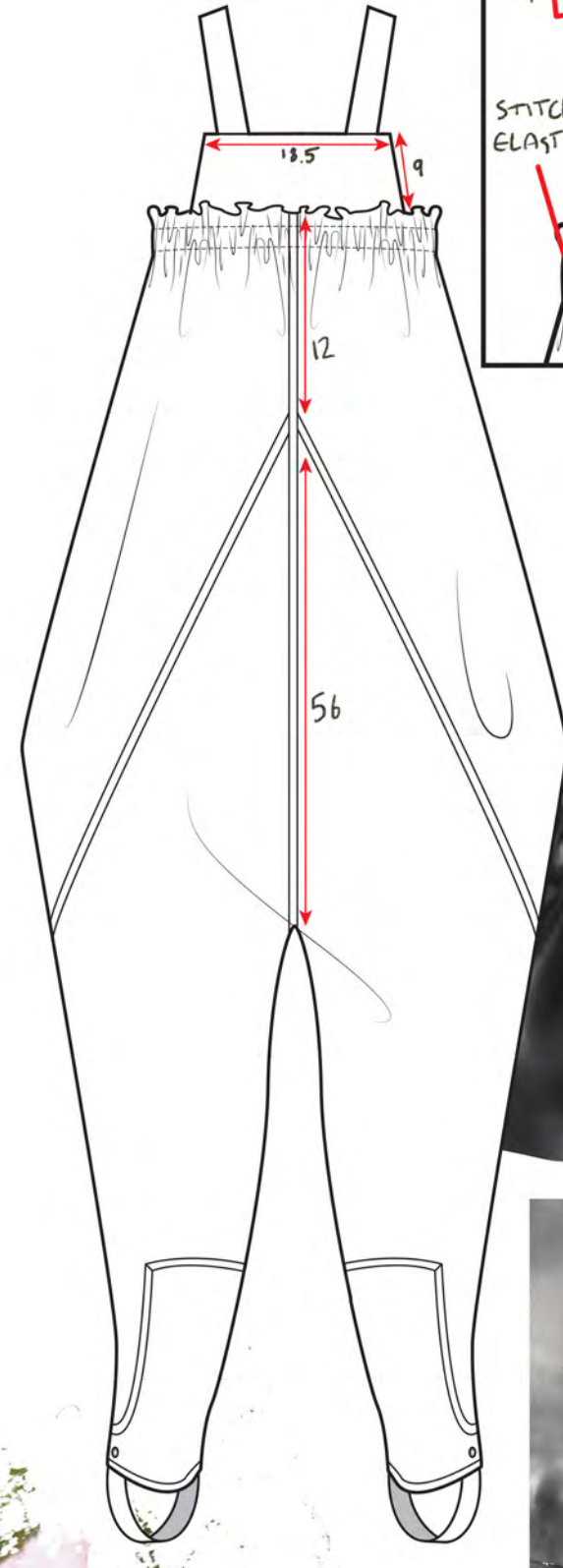
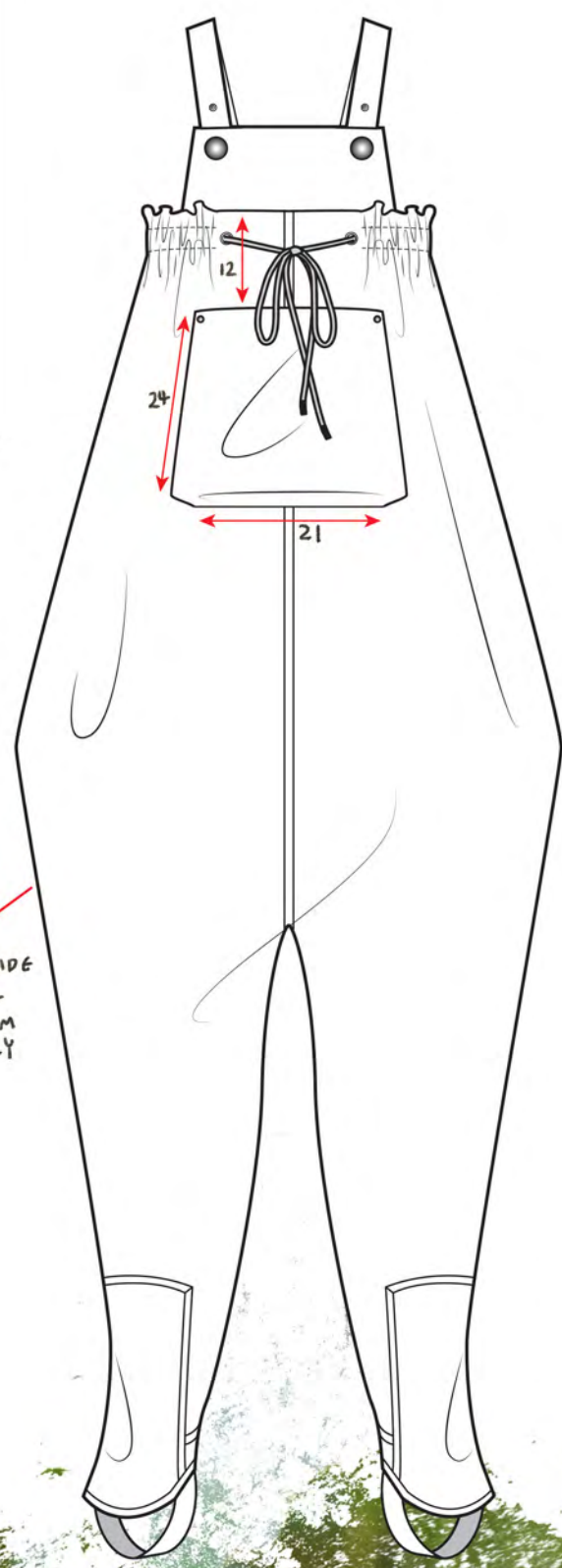
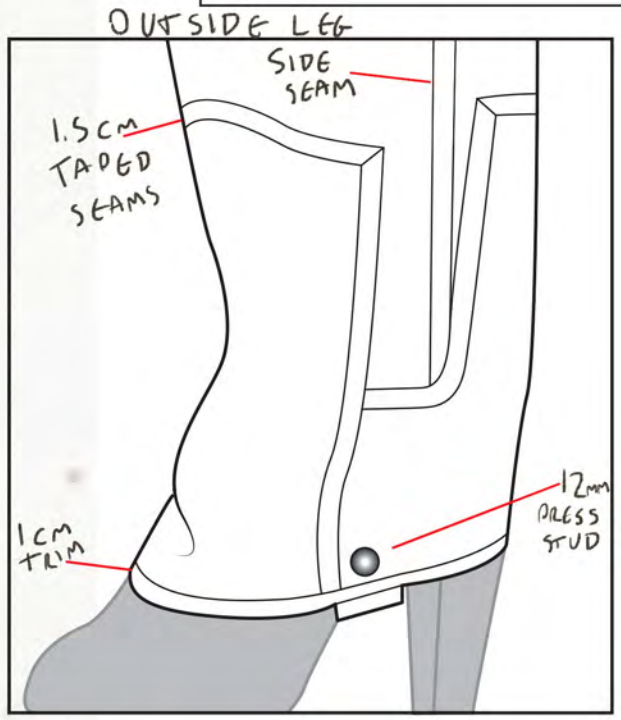
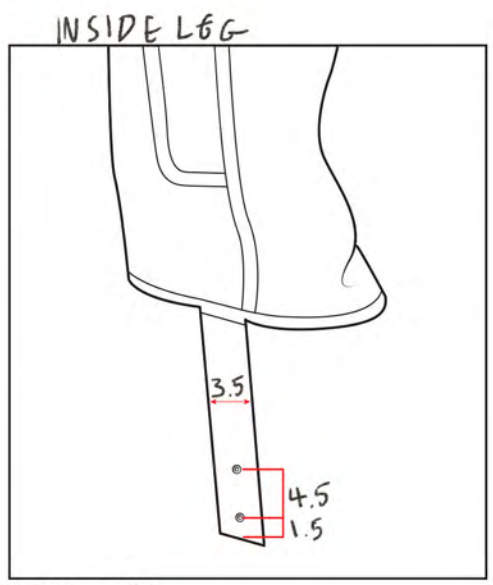
LOOK 2 TOILE 2





LOOK 4

0.65 LATEX



LOOK 4
SEA WOMEN
SPEC





2 LAYERS
0.33 LATEX

ALL SEAMS 4-THREAD
OVERLOCKED



LOOK 4
SEA WOMEN
SPEC

LOOK 1



LOOK 2



LOOK 3



LOOK 4



LOOK 5



LOOK 6



SEA WOMEN
LINE UP

LOOK 1

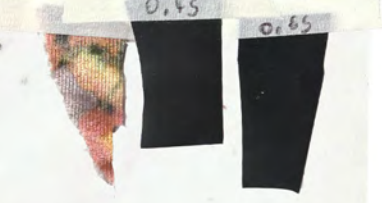
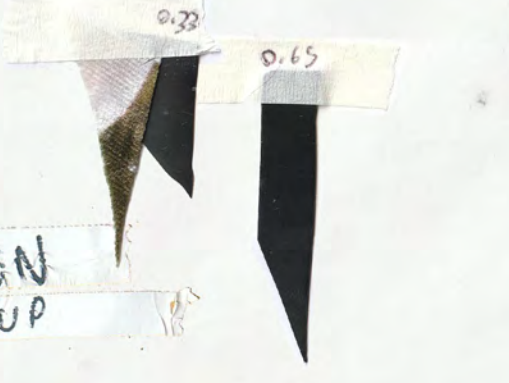
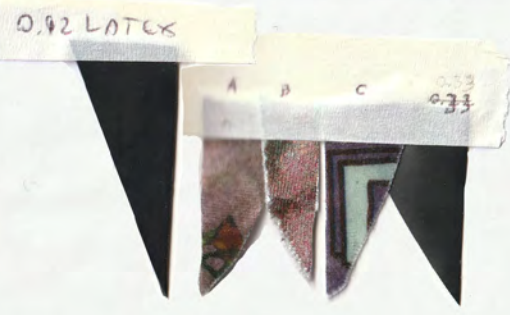
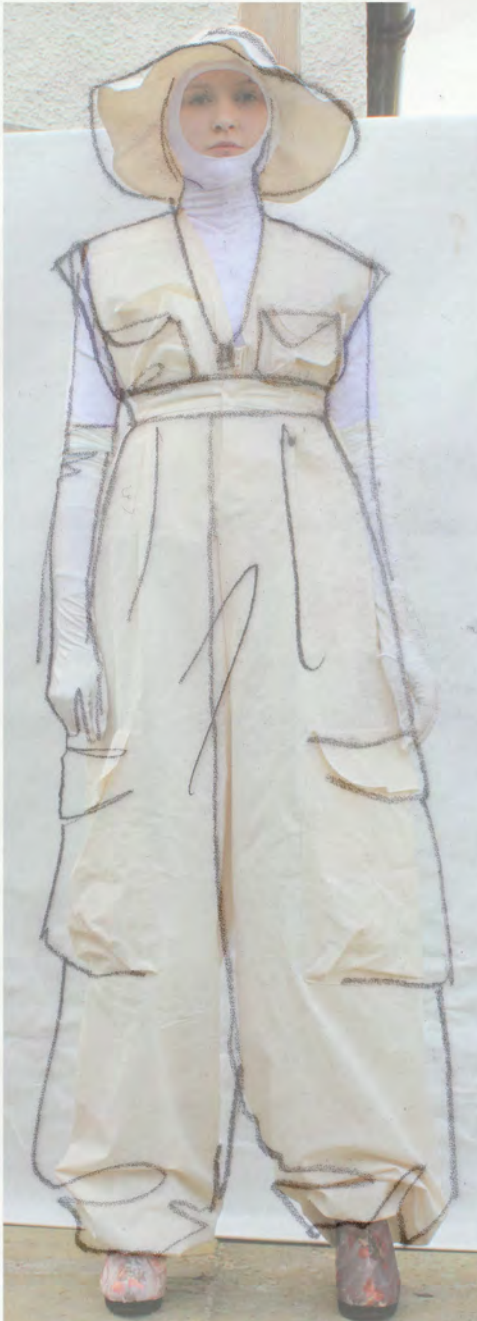
LOOK 2

LOOK 3

LOOK 4

LOOK 5

LOOK 6



SEA WOMEN
LINE UP

LOOK 1

LOOK 2

LOOK 3

LOOK 4

LOOK 5

LOOK 6



LOOK 1

LOOK 2

LOOK 3

LOOK 4

LOOK 5

LOOK 6



SEA WOMEN
LINE UP





IMG_4688.JPG



IMG_4725.JPG



IMG_4735.JPG



IMG_4758.JPG



IMG_4766.JPG



IMG_4781.JPG



IMG_4690.JPG



IMG_4727.JPG



IMG_4737.JPG



IMG_4760.JPG



IMG_4768.JPG



IMG_4783.JPG



IMG_4691.JPG



IMG_4728.JPG



IMG_4738.JPG



IMG_4761.JPG



IMG_4769.JPG



IMG_4784.JPG

SEA WOMEN
LINE UP

A photograph of a rocky coastline. In the foreground, there are large, light-colored rocks with some green moss or algae. In the middle ground, a black post with a red square marker on top stands on a rock. The background shows a calm sea and a distant, hazy horizon under a pale sky.

Molly Moreton
Collection 001

Sea Women

/ Photographs: Dominic Flavell / Molly Moreton
• Models: Youngwon Lee / Florence Windsor







