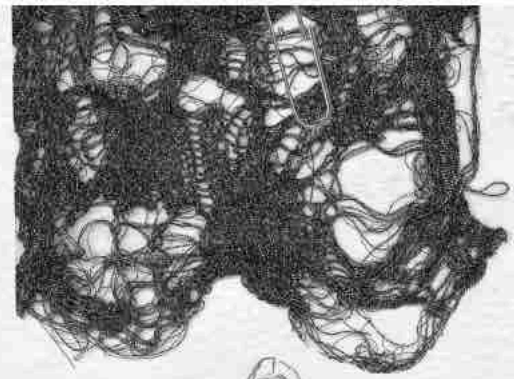


Knit Experimentations



JOSEFINE HJ



add femininity



Mix of soft and knit



Bomber jacket -
experimentation

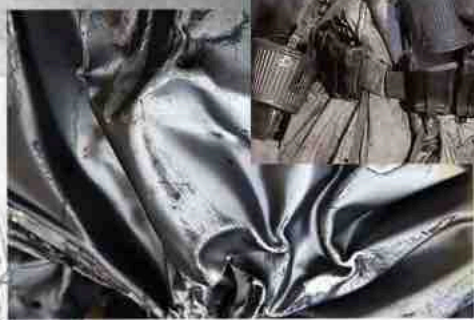
Bespoke Royal Navy
Admiralty Suit
c.1940s



lining and diagonal pockets are flat. They
seem to be recessed for this reason, and
make markings are done from both
sides, including the inside into them



Water texture from the coat becomes
a camouflage
print -





leather -



Silk



Swatch 10: Olive Green Swatch 11: Dark Green



Swatch 12: Multi-color Swatch 13: Red/Black



Swatch 14: Green/Black Swatch 15: Green/Black



Swatch 16: Red/Black Swatch 17: Yellow/Black



Swatch 18: Red/Black Swatch 19: Red/Black

Daniel Arsham's work is a blend of sculpture and fashion. He creates pieces that are both functional and artistic, often using unconventional materials and techniques. His designs are inspired by nature and the human form, resulting in pieces that are both beautiful and practical.



the jacket is made of leather and silk

THE GATE DESTROYERS BY DANIEL ARSHAM

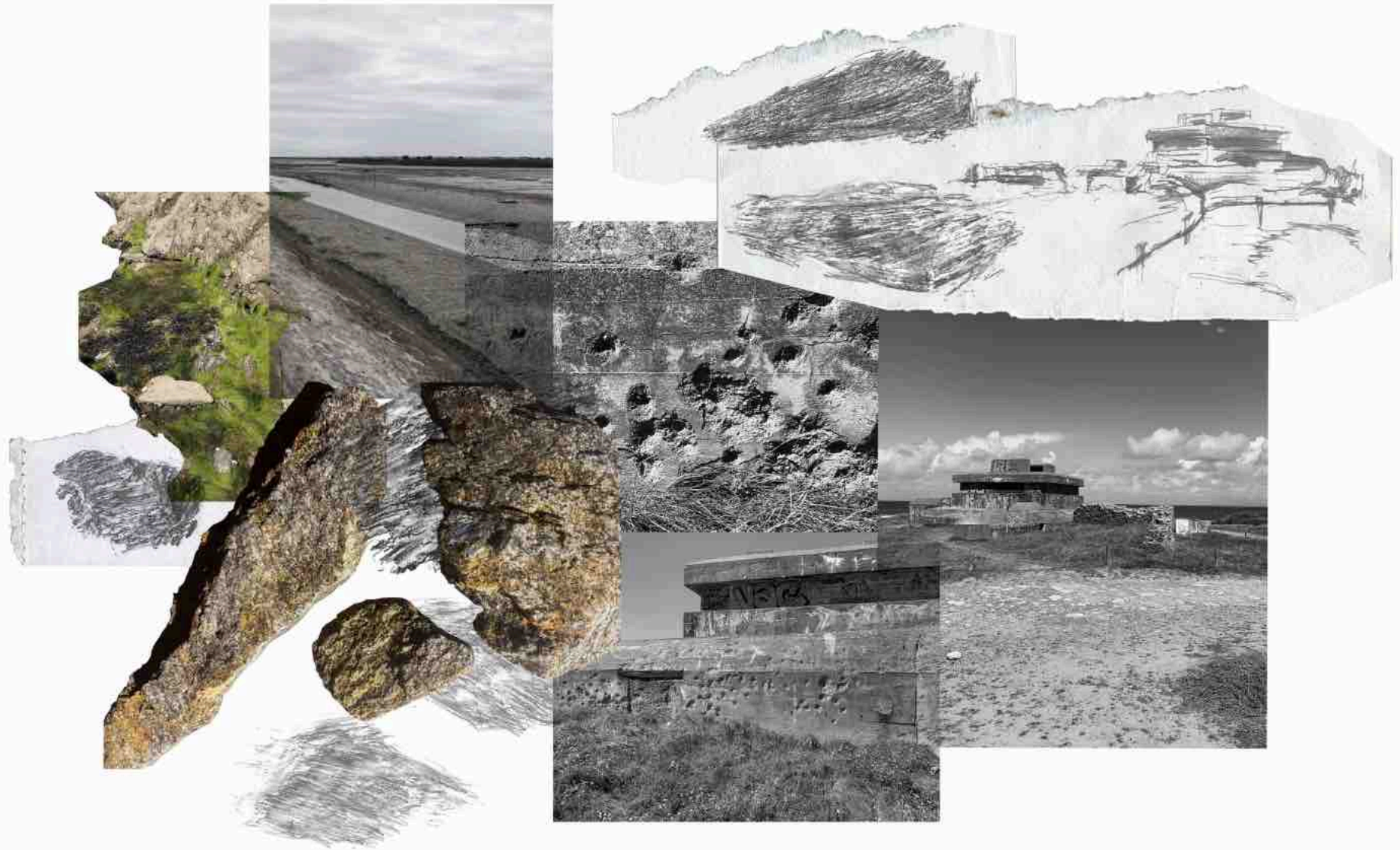


DANIEL ARSHAM



playing around camouflage prints -



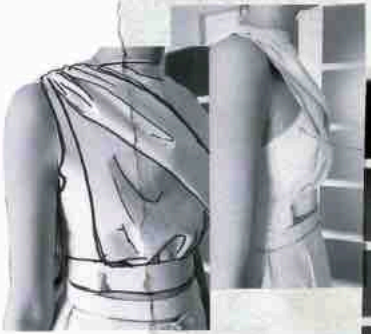


INSPIRATION - NOIRMOUTIER THE FRENCH ISLAND

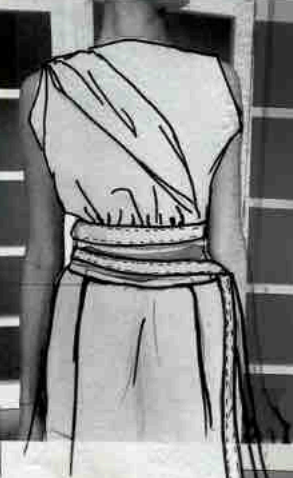




Dark beaus Lattice -

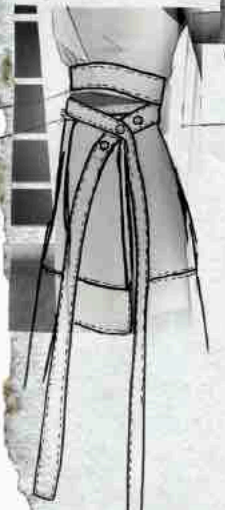


-2cm -
so that can rise
above the waist -



3 pins stay
so we can
test it -

-1cm
-2cm
skirt -



not to open straps
but you can
the around the
body as much
as the skirt -



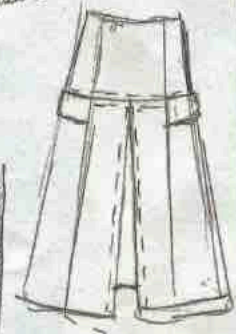
FINAL TOILE



Half button pocket flap by
the skirt -

to make
the center back
2 pins stay
Make it tighter -

FINISHES



↑ inside
double face fusings + top stitch.





Bleached Denim
 To give an old dusty effect
 -> replace to the original one

change collar details

FIRST TOILE

MAXI JACKET TO RECREATE THE ASPECT OF A JACKET BORROWED FROM THE MASCULINE WARDROBE.

no edge - fabric thread

middle seam -
 aligns of the center
 -> avoid cut
 -> 1cm seam allowance

Pocket in reference to Maxima's dante

DEVELOPMENT OF THE TOP

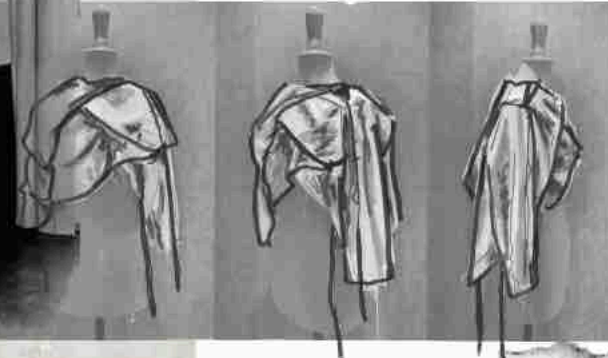


lustrous satin



MARLENE DIETRICH

FIRST DRAPING WITH A MILITARY JACKET MADE IN SATIN FABRIC



Use straps to create volume and drape -
Play full top as you can adapt to your needs.



The same effect as shown in the jacket from look 3



Sketch the pocket detail in detail

add a top waistband in the top piece and the top of the skirt - Play with volume

use to give form





MARLENE DIETRICH



Asymmetric



Experimentations
with ruffles and
how it impacts
the silhouette.



Denim + leather + mixed basket...



Black leather
Black fabric

Angled
toilet
skirt

Toile review

FINAL TOILE



Look ①



Look ②



Look ③



Look ④



Look ⑤